

V&V Reference Report

L2 ASCDS Version : 8.4.5

Observation 4389 - L2 Version 3
Chandra X-Ray Center

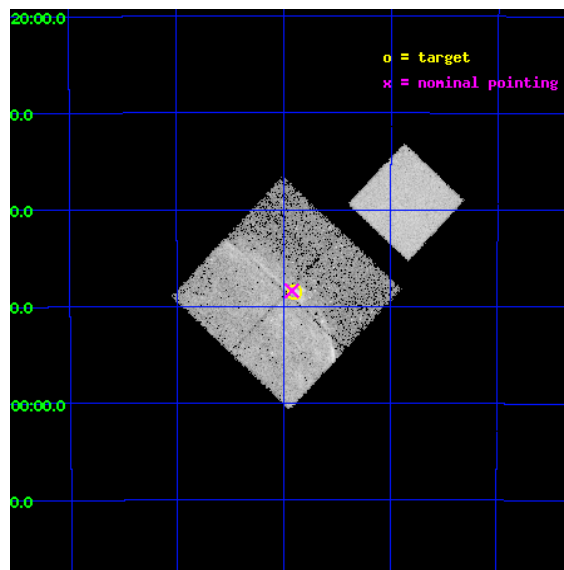
L2 Processing Date : Oct 26 2012

Contents

1	Front	2
2	OBI	3
2.1	OBI	3
2.1.1	Images	3
2.1.2	Bias	3
2.1.3	Parameters	4
2.1.4	Events	4
2.2	Compared Parameters	5
2.3	Aspect	6
2.4	Star Slots	9
2.4.1	Slot 3	9
2.4.2	Slot 4	10
2.4.3	Slot 5	11
2.4.4	Slot 6	12
2.4.5	Slot 7	13
2.5	FID Slots	14
2.5.1	Slot 0	14
2.5.2	Slot 1	15
2.5.3	Slot 2	16
A	Summary	17
A.1	Status	17
A.2	Comments	17

1 Front

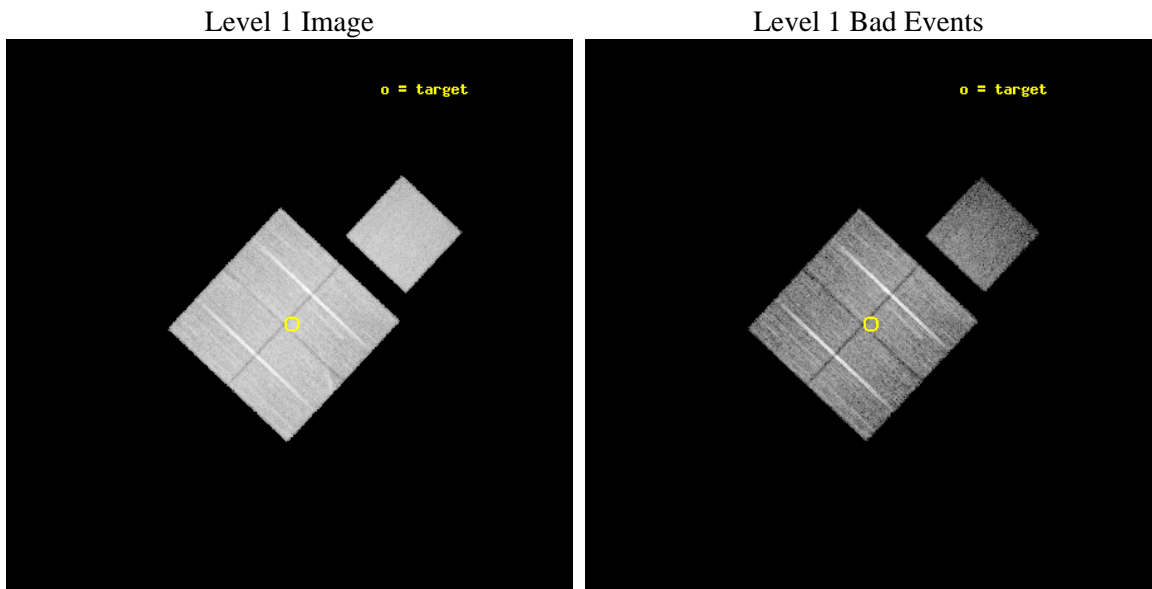
seq_num	500317	Sequence number
obs_id	4389	Observation id
title	STUDYING HIGH MACH NUMBER SHOCKS IN YOUNG SUPERNOVA REMNANTS WITH CHANDRA	Proposal title
observer	Prof. John Hughes	Principal investigator
object	SN1006	Source name
dtcycle	0	
cycle	P	events from which exps? Prim/Second/Both
ra_targ	225.475	Observer's specified target RA [deg]
dec_targ	-41.8083	Observer's specified target Dec [deg]
ra_nom	225.48084139726	Nominal RA [deg]
dec_nom	-41.80667487017	Nominal Dec [deg]
roll_nom	43.212587481415	Nominal Roll [deg]
revision	3	Processing version of data
ontime	20049.951452821	Sum of GTIs [s]
livetime	19787.984076531	Livetime [s]
ontime0	20052.969332993	Sum of GTIs [s]
ontime1	20056.15135321	Sum of GTIs [s]
ontime2	20049.910432756	Sum of GTIs [s]
ontime3	20049.951452821	Sum of GTIs [s]
ontime7	20056.27447322	Sum of GTIs [s]
l2events	113924	Number of level 2 events



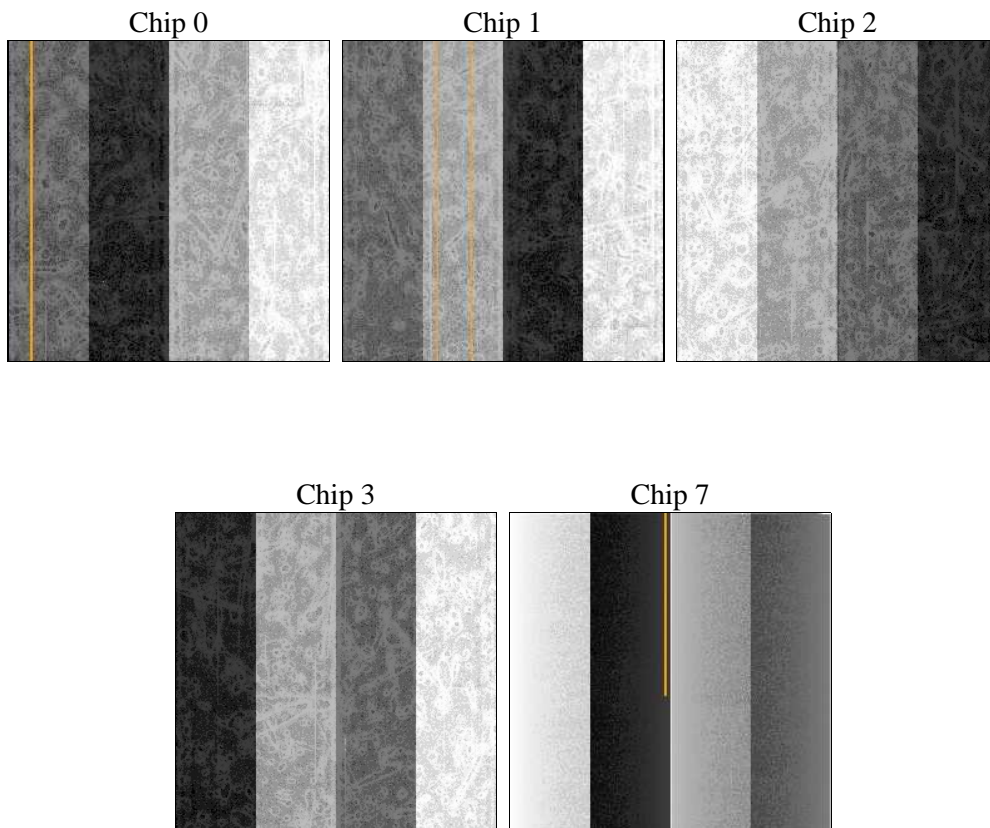
2 OBI

2.1 OBI

2.1.1 Images



2.1.2 Bias



2.1.3 Parameters

obi_num	0	Obi number	sched_exp_time	20280.000000	[s] Scheduled observation exposure time
ascdsver	8.4.5	Processing system revision	ontime	20049.951452821	Sum of GTIs [s]
caldbver	4.5.2	 	ontime0	20052.969332993	Sum of GTIs [s]
date	2012-10-26T12:33:17	Date and time of file creation	ontime1	20056.15135321	Sum of GTIs [s]
revision	3	Processing version of data	ontime2	20049.910432756	Sum of GTIs [s]
			ontime3	20049.951452821	Sum of GTIs [s]
			ontime7	20056.27447322	Sum of GTIs [s]
			l1events	521650	Number of level 1 events

2.1.4 Events

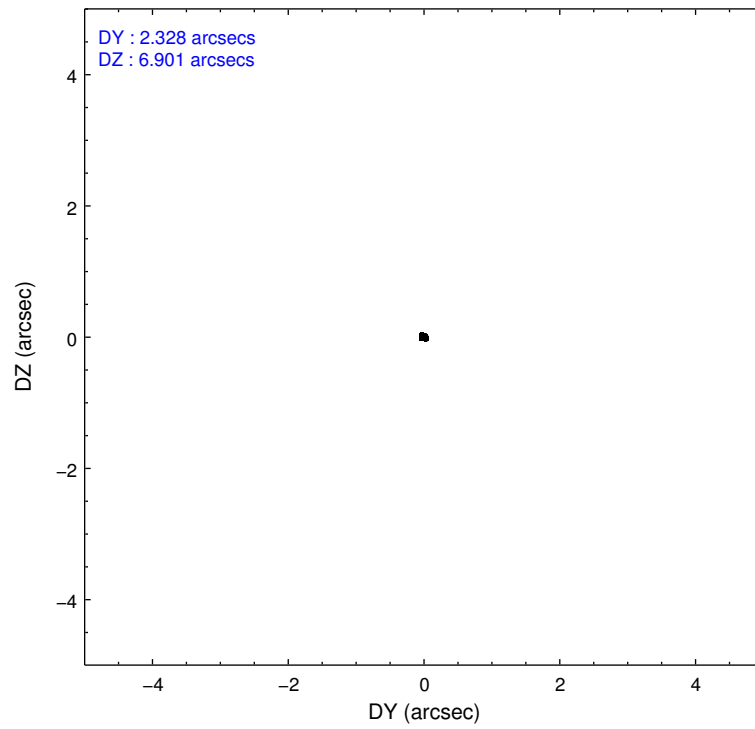
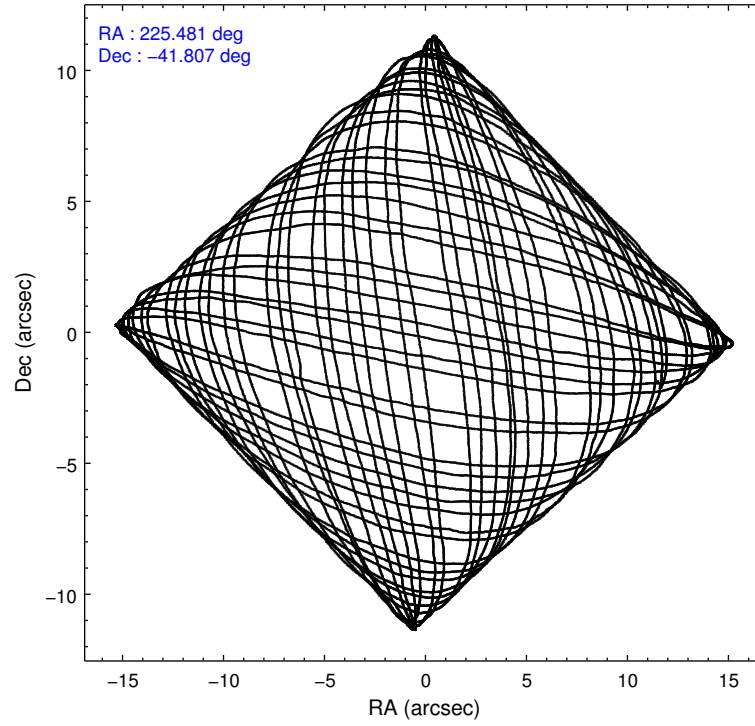
	ccd 0	ccd 1	ccd 2	ccd 3	ccd 7
level 1 events	103983	111006	107164	104587	94910
rejected events	81116	81745	93680	91582	49513
rejected %	78%	73%	87%	87%	52%

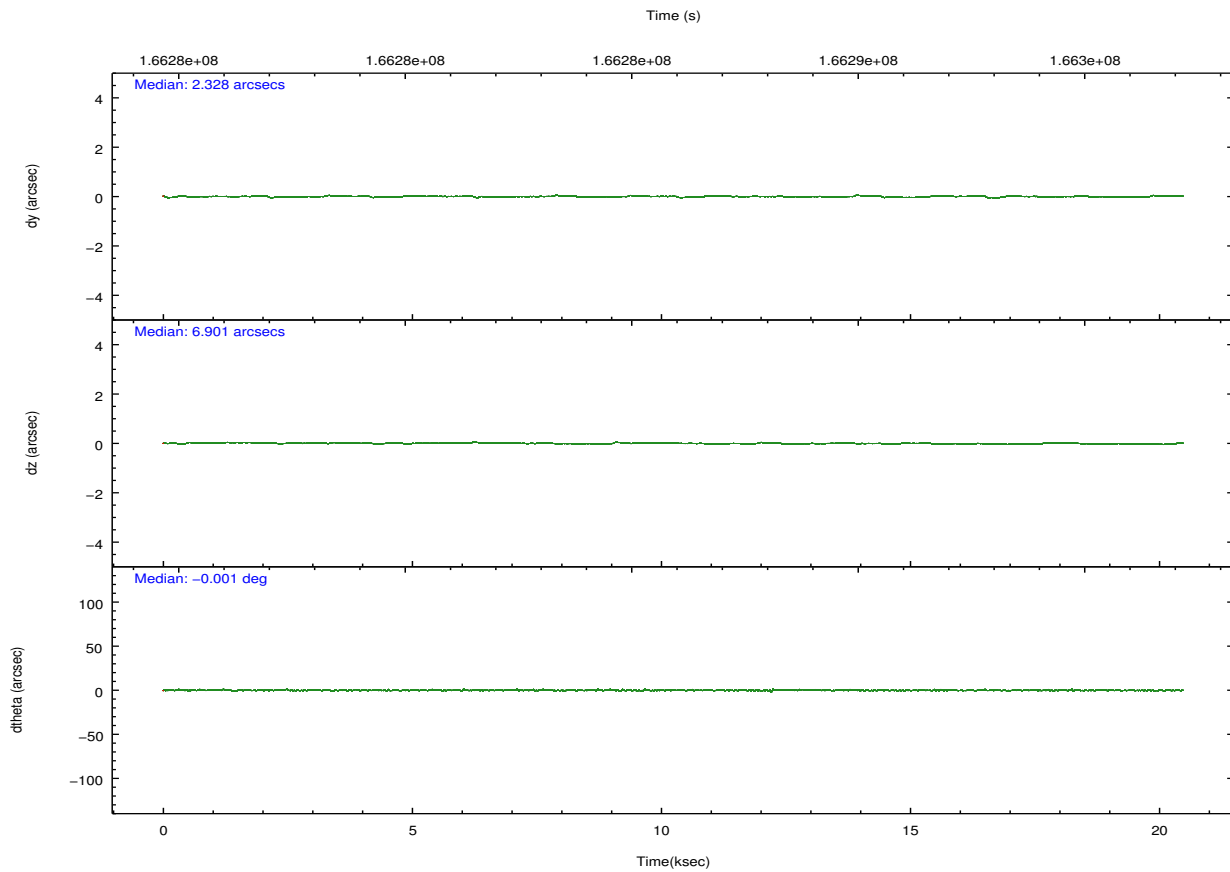
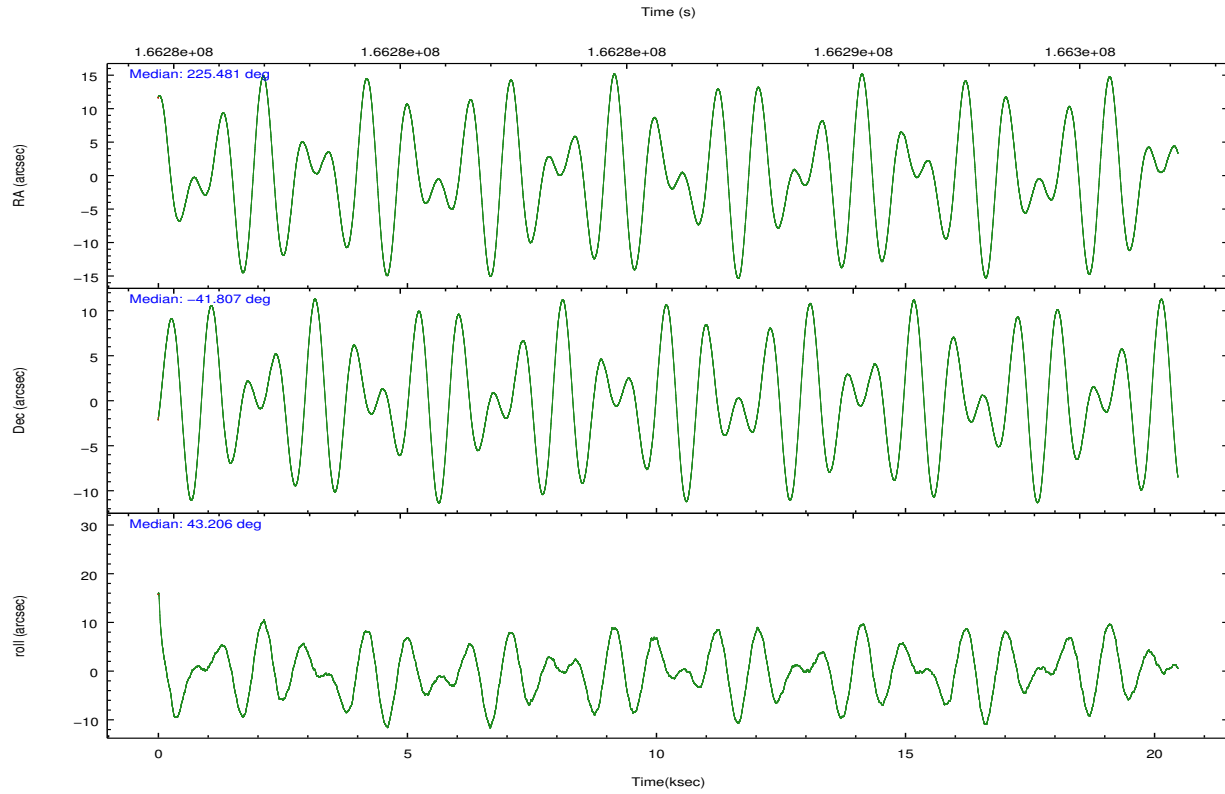
	ccd 0	ccd 1	ccd 2	ccd 3	ccd 7
grade 0 events	15266	20529	7193	6775	4474
	14%	18%	6%	6%	4%
grade 1 events	94	103	66	68	74
	0%	0%	0%	0%	0%
grade 2 events	3103	3504	2359	2236	8814
	2%	3%	2%	2%	9%
grade 3 events	1346	1522	1120	1100	4173
	1%	1%	1%	1%	4%
grade 4 events	1254	1472	1114	1116	4173
	1%	1%	1%	1%	4%
grade 5 events	3006	3287	2817	3399	10069
	2%	2%	2%	3%	10%
grade 6 events	1907	2239	1701	1781	23779
	1%	2%	1%	1%	25%
grade 7 events	78007	78350	90794	88112	39354
	75%	70%	84%	84%	41%

2.2 Compared Parameters

Parameter	Planned	Actual	Parameter	Planned	Actual
Instrument	ACIS	ACIS	Obspar format version number	7	7
Detector	ACIS-01237	ACIS-01237	Obspar file type	PREDICTED	ACTUAL
Grating	NONE	NONE	Obspar update status	NONE	UPDATED
Data mode	VFAINT	VFAINT	Number of optional ACIS chips dropped	0	0
Observation mode	POINTING	POINTING	On-chip summing requested	N	N
[deg] Pointing RA	225.470369	225.4808413972553	Subarray requested	NONE	NONE
[deg] Pointing Dec	-41.832944	-41.80667487017035	Alternating exposures requested	N	N
[deg] Pointing Roll	42.996912	43.21258748141479	[s] Primary exposure time	0.000000	3.1
[mm] SIM focus pos	-0.782348	-0.7809083437167272			
[mm] SIM defocus	0	0.001439871863259334			
[mm] SIM translation stage pos	-233.592463	-233.5874344608287			
[mm] SIM translation stage offset	0	-0.005018542100998502			
[s] Observation start time (MET)	166275869.184000	166275492.83728			
Observation start date	2003-04-09T11:43:25	2003-04-09T11:38:12			
[s] Observation end time (MET)	166296149.184000	166296282.91316			
Observation end date	2003-04-09T17:21:25	2003-04-09T17:24:42			
Read mode	TIMED	TIMED			

2.3 Aspect



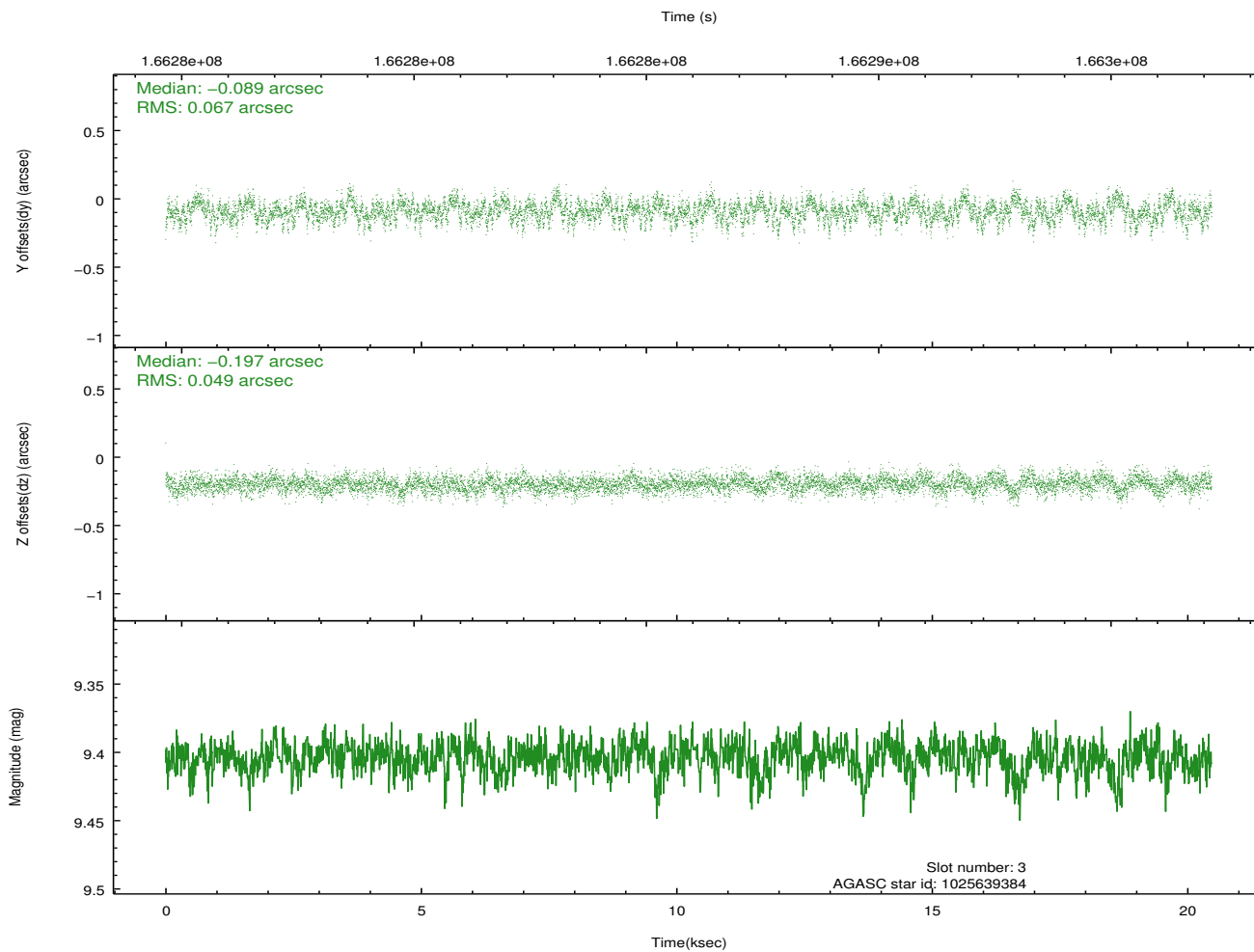
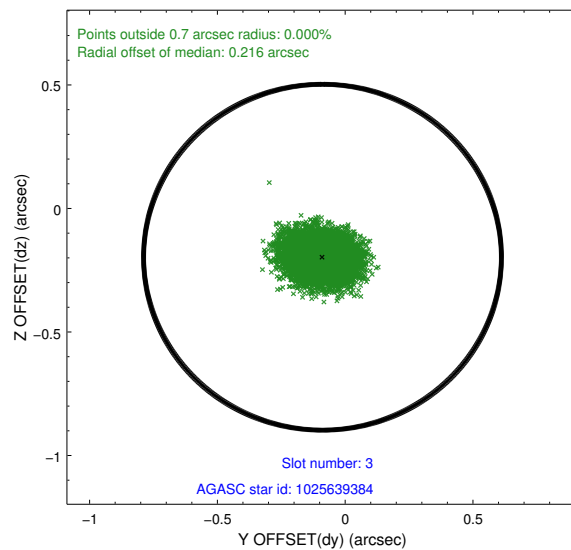
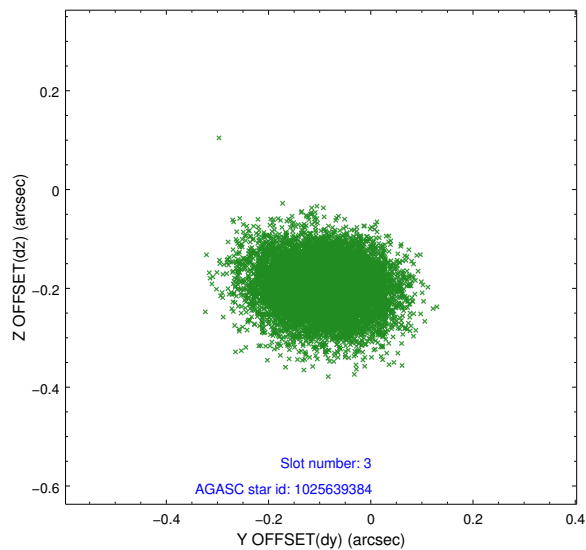


Slot Statistics

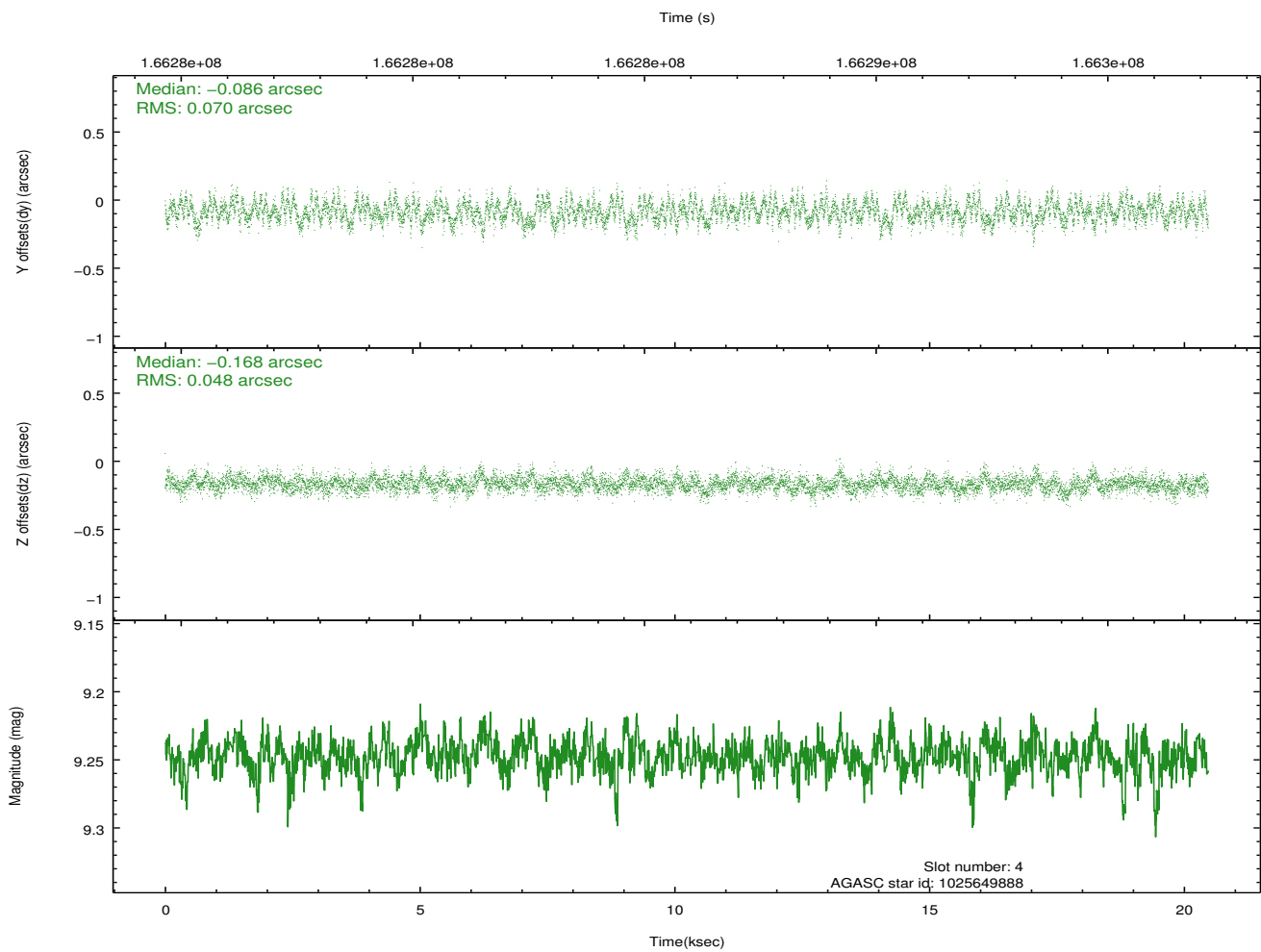
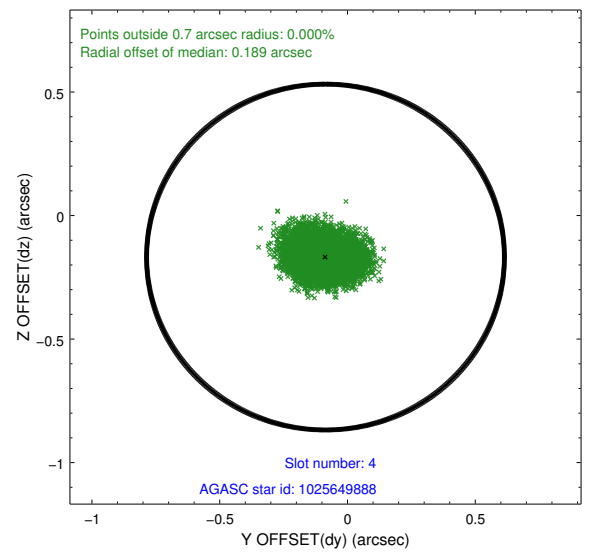
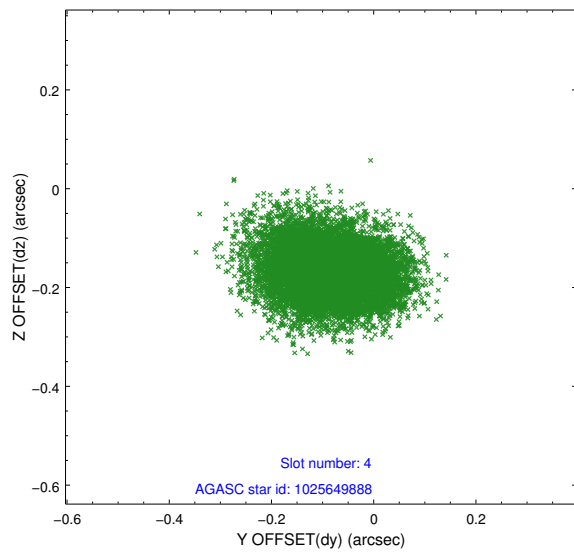
slot	status	id	mag	n_pts	med_dy	med_dz	dr1	dr2	ra	dec	mean_y	mean_z
0	FID	ACIS-I-1	7.24	4994	0.011	0.002	0.006	0.010	0.000000	0.000000	937.48	-830.31
1	FID	ACIS-I-5	7.24	4994	-0.078	0.053	0.006	0.010	0.000000	0.000000	-1810.58	1067.20
2	FID	ACIS-I-6	7.26	4994	-0.025	0.015	0.007	0.011	0.000000	0.000000	402.84	1711.82
3	GUIDE	1025639384	9.40	9970	-0.089	-0.197	0.088	0.145	225.439759	-41.063650	1827.78	2082.21
4	GUIDE	1025649888	9.25	9986	-0.086	-0.168	0.090	0.149	225.540879	-41.189826	1718.66	1563.26
5	GUIDE	1026170368	9.31	9983	0.125	0.087	0.078	0.129	225.763429	-42.291155	-554.40	-1739.57
6	GUIDE	1026183784	9.20	9983	-0.160	0.174	0.078	0.126	226.363370	-41.841537	1722.23	-1664.91
7	GUIDE	1026170800	9.01	9985	0.213	0.106	0.091	0.145	225.400024	-42.381702	-1483.49	-1317.68

2.4 Star Slots

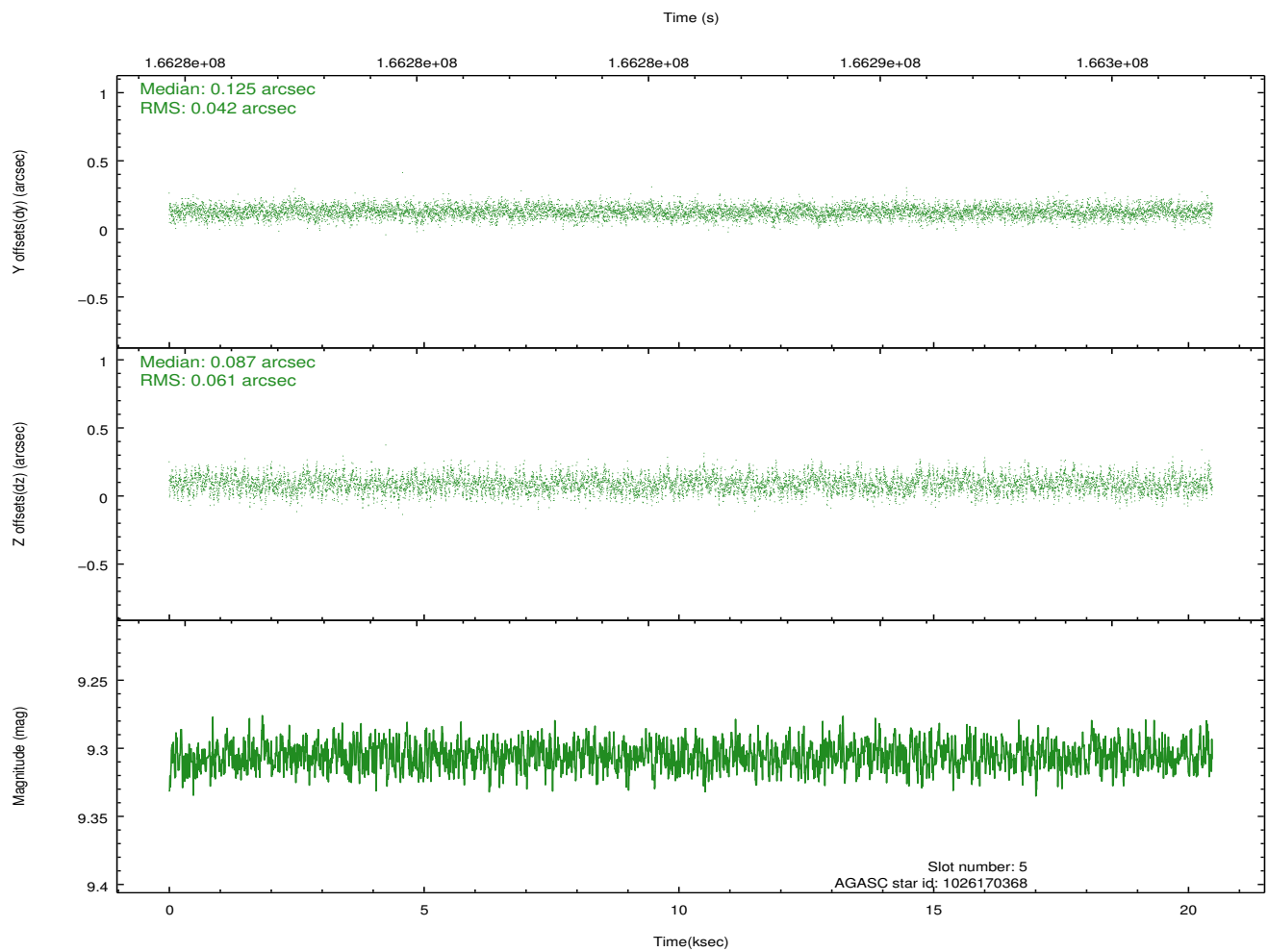
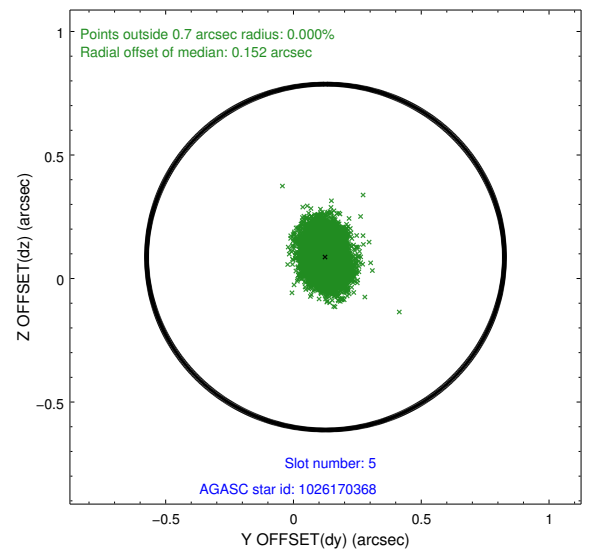
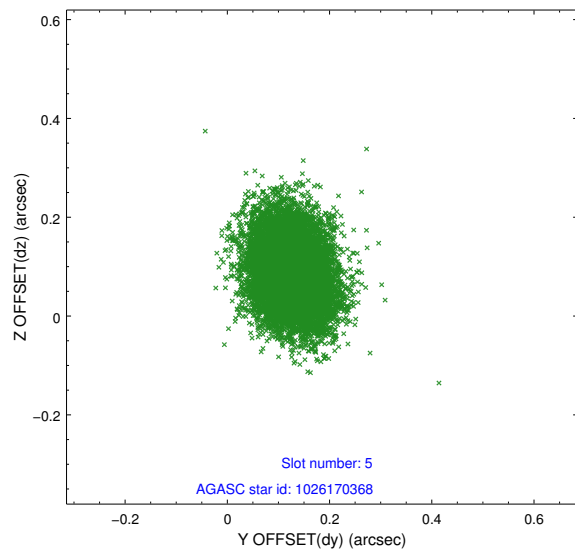
2.4.1 Slot 3



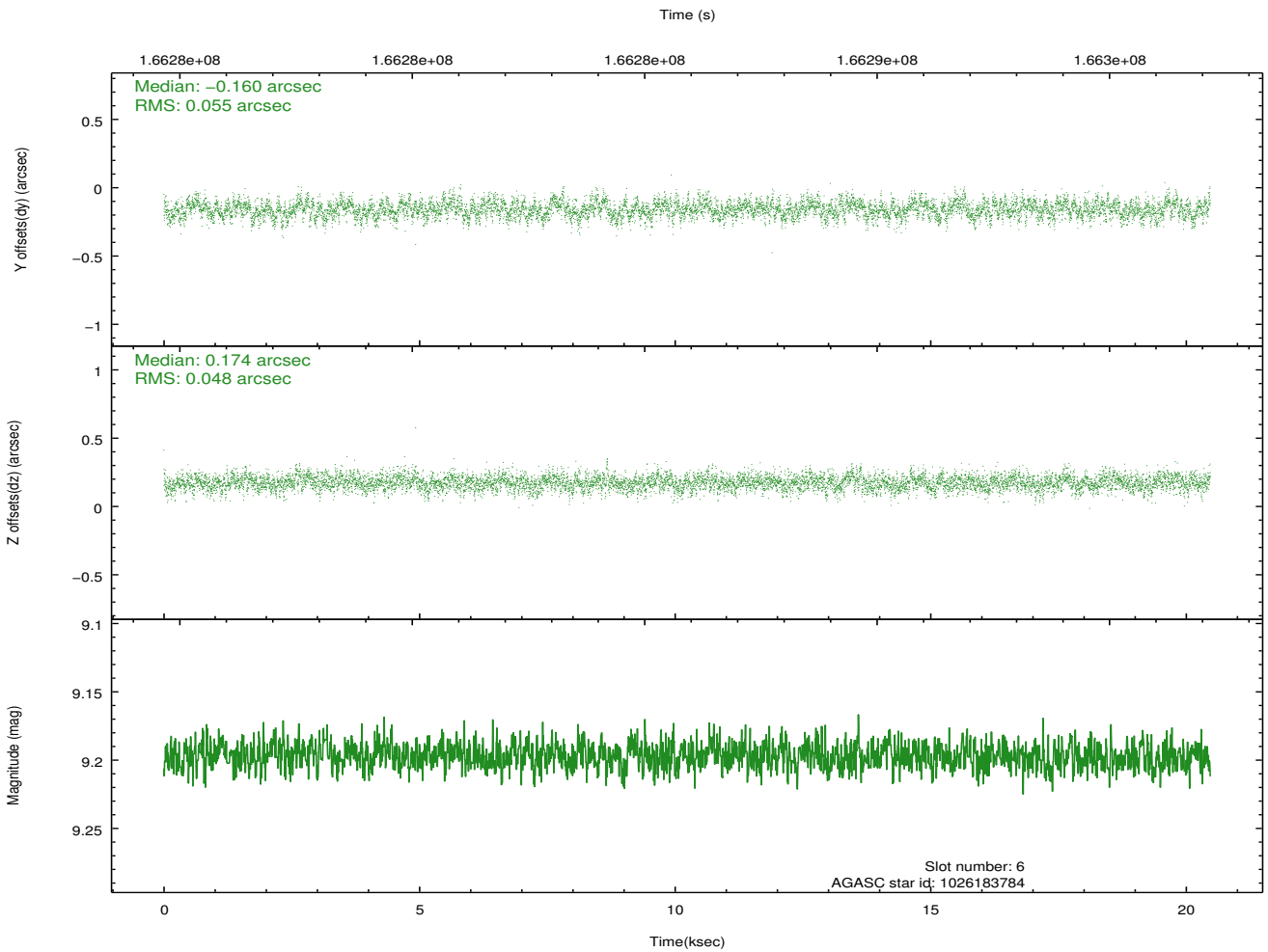
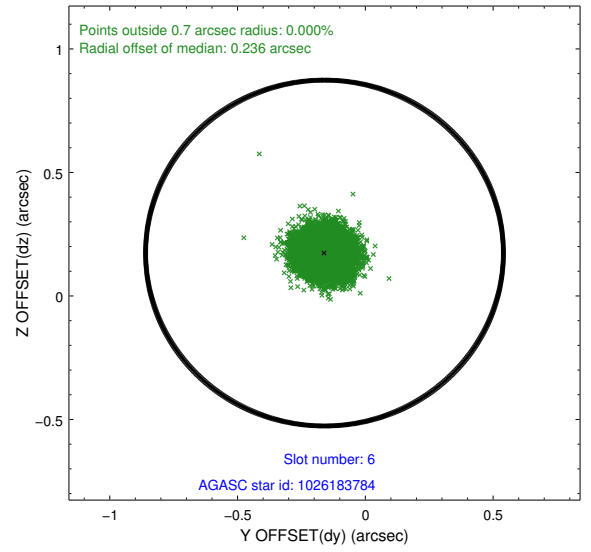
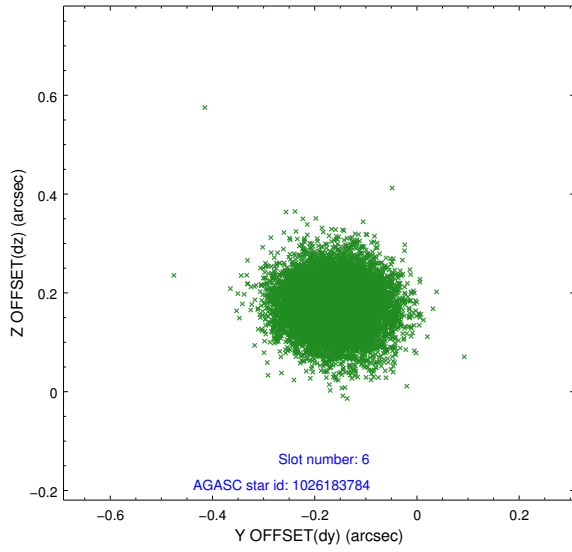
2.4.2 Slot 4



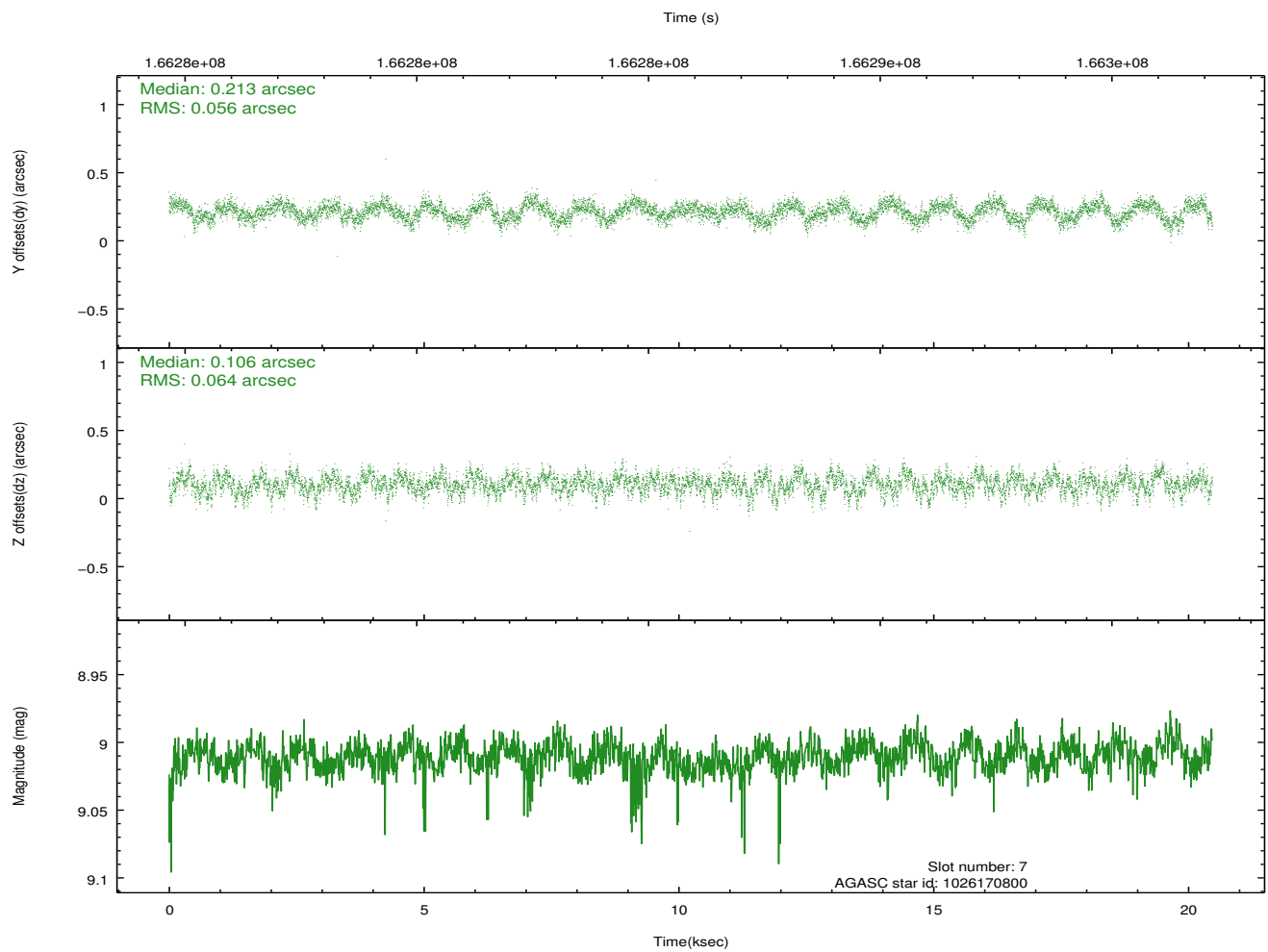
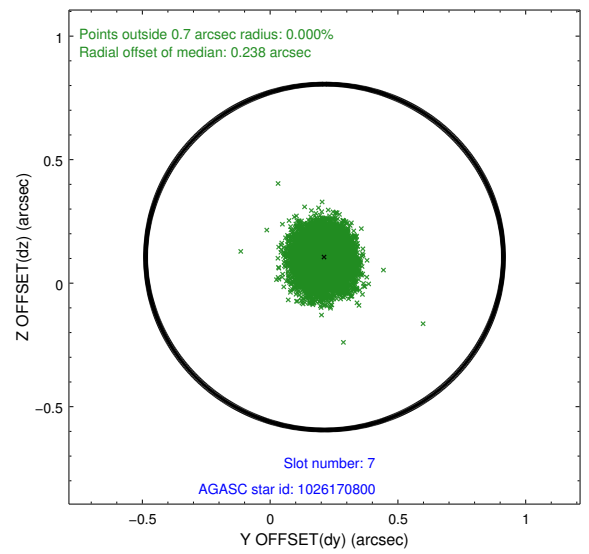
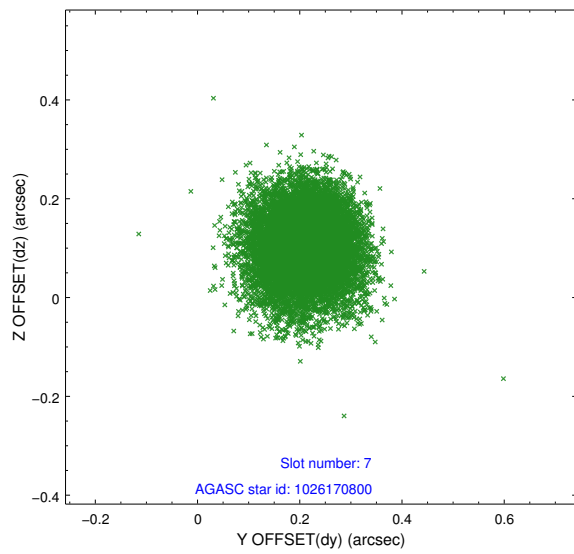
2.4.3 Slot 5



2.4.4 Slot 6

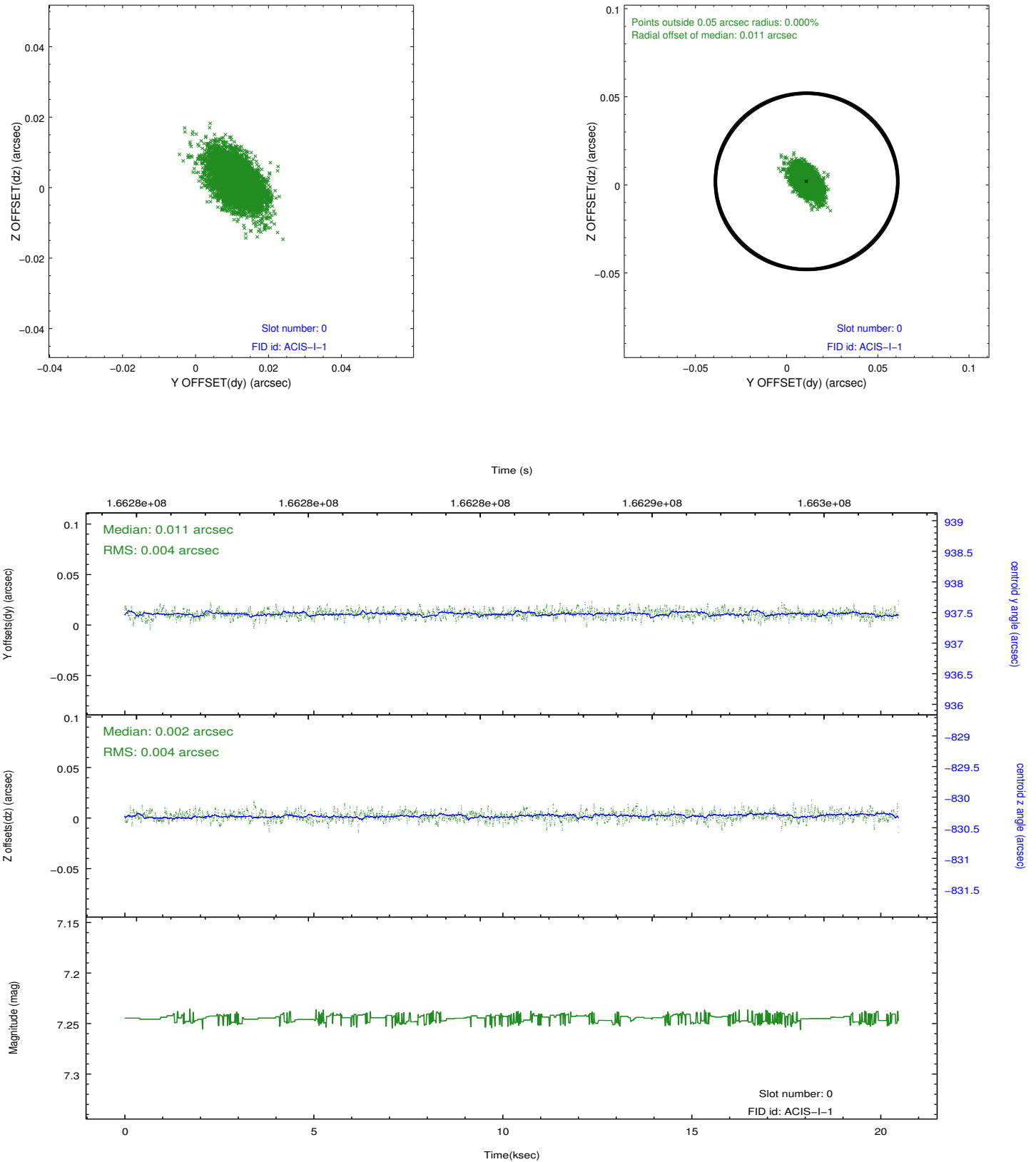


2.4.5 Slot 7

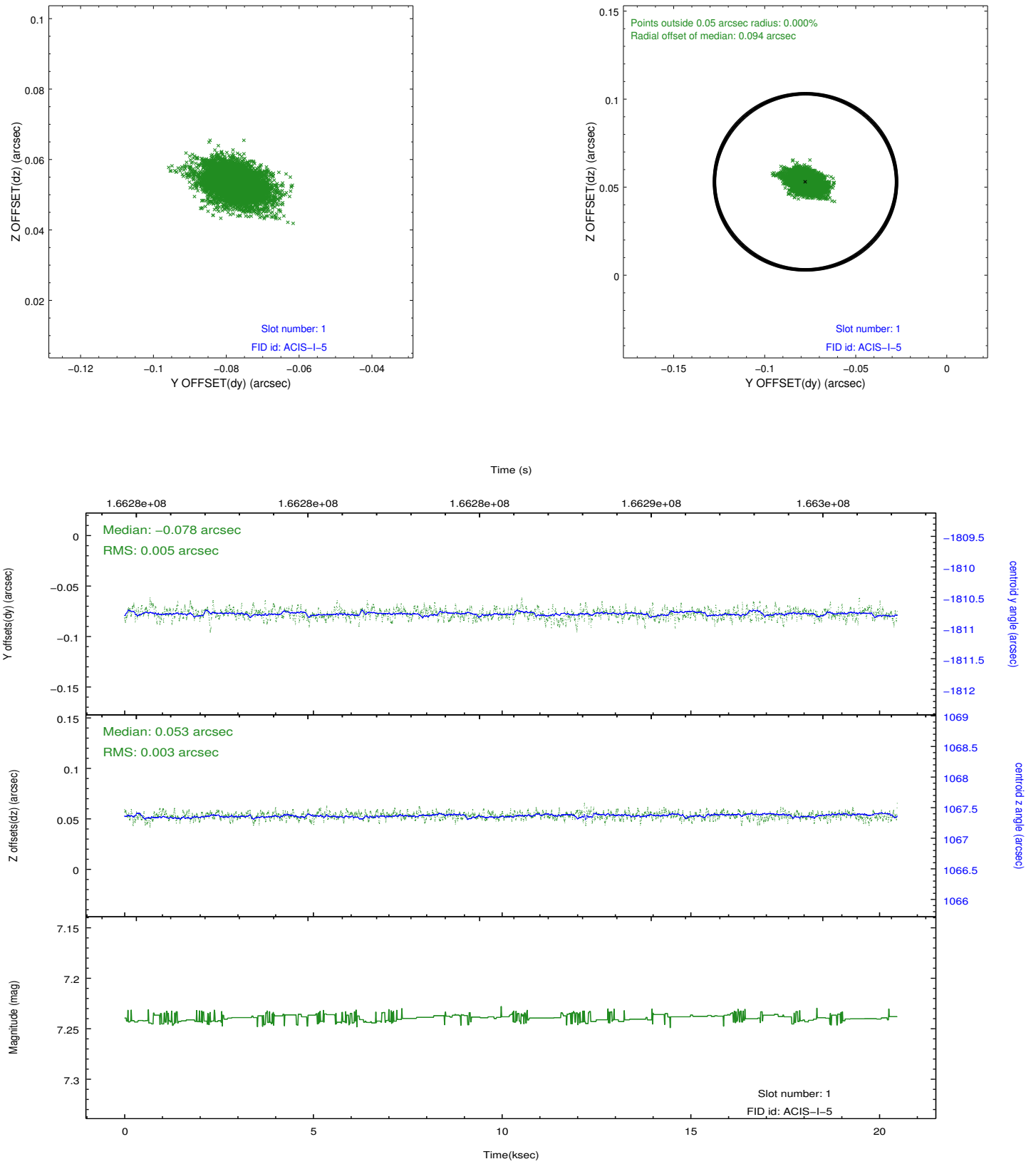


2.5 FID Slots

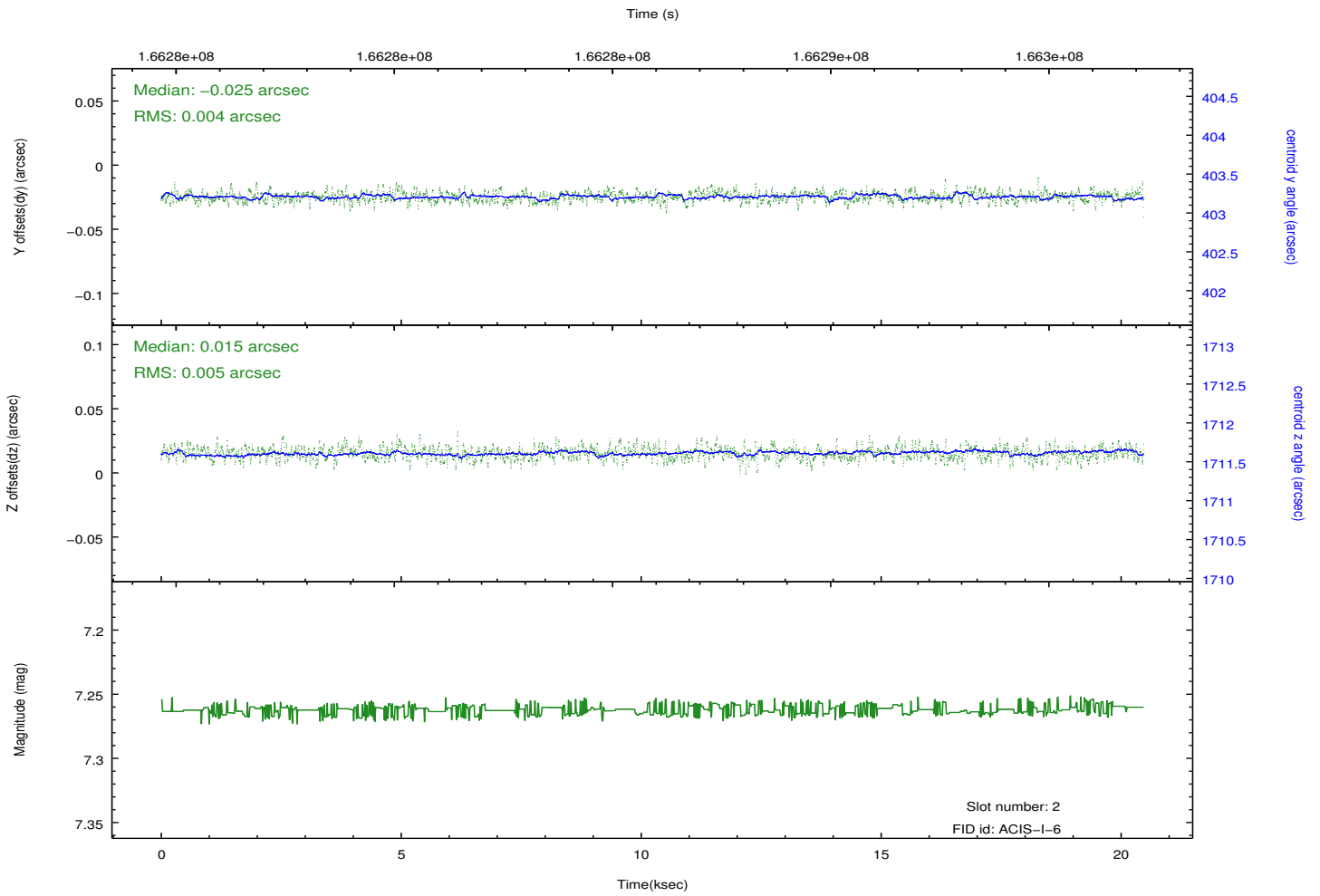
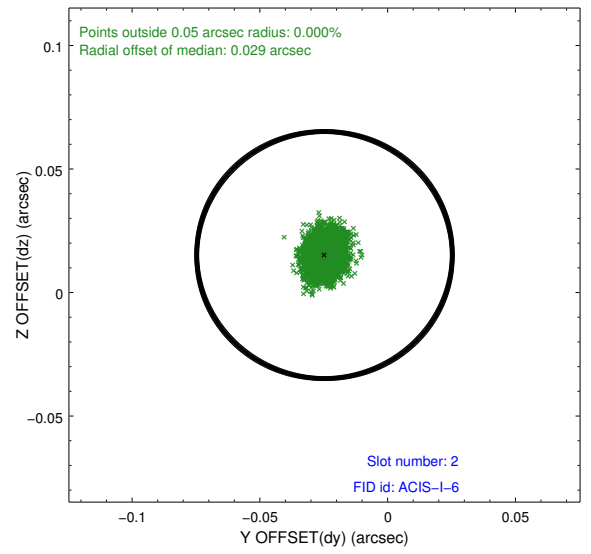
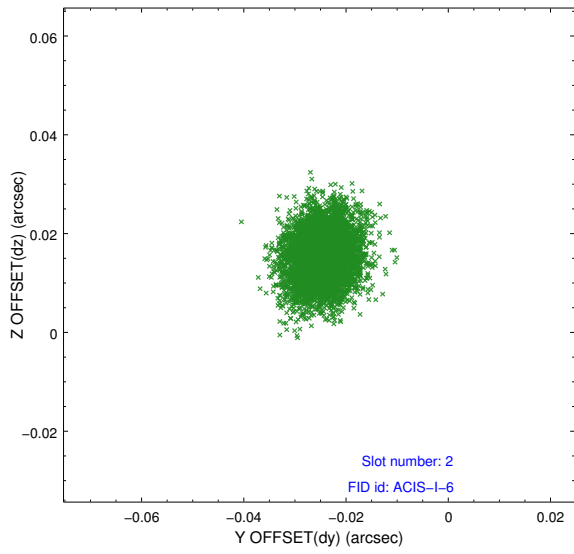
2.5.1 Slot 0



2.5.2 Slot 1



2.5.3 Slot 2



A Summary

A.1 Status

V&V Scientist	Jen Lauer
V&V Date (YYYY-MM-DD)	2012.11.14
V&V Edition	1
V&V Disposition and Status	OK
V&V Charge Time	20.05

A.2 Comments