

V&V Reference Report

L2 ASCDS Version : 8.4.5

Observation 4419 - L2 Version 3
Chandra X-Ray Center

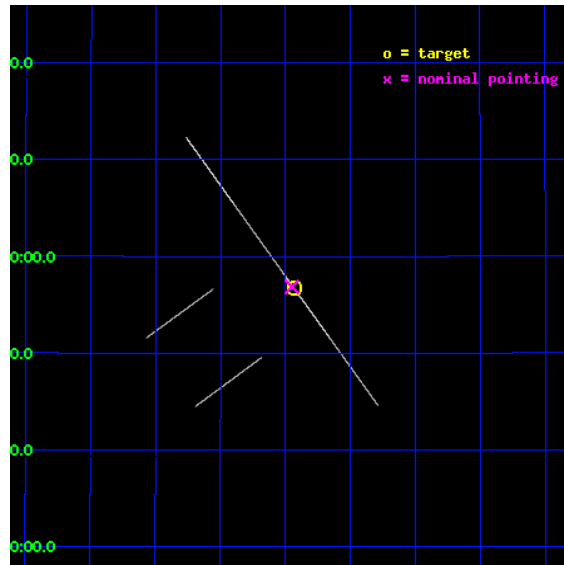
L2 Processing Date : Oct 23 2012

Contents

1	Front	2
2	OBI	3
2.1	OBI	3
2.1.1	Images	3
2.1.2	Bias	3
2.1.3	Parameters	4
2.1.4	Events	4
2.2	Compared Parameters	5
2.3	Aspect	6
2.4	Star Slots	9
2.4.1	Slot 3	9
2.4.2	Slot 4	10
2.4.3	Slot 5	11
2.4.4	Slot 6	12
2.4.5	Slot 7	13
2.5	FID Slots	14
2.5.1	Slot 0	14
2.5.2	Slot 1	15
2.5.3	Slot 2	16
A	Summary	17
A.1	Status	17
A.2	Comments	17

1 Front

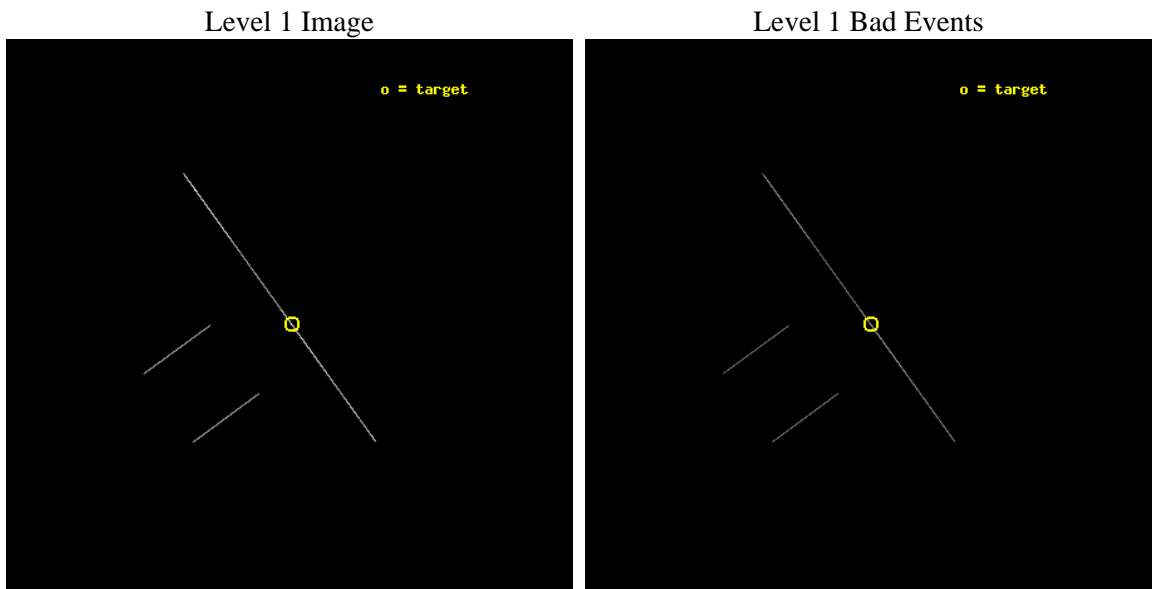
seq_num	300095	Sequence number
obs_id	4419	Observation id
title	TIMING THE ORBIT OF RX J1914.4+2456: GRAVITATIONAL RADIATION AND THE NATURE OF THE X-RAY EMISSION	Proposal title
observer	Dr. Tod Strohmayer	Principal investigator
object	RX J1914.4+2456	Source name
ra_targ	288.60875	Observer's specified target RA [deg]
dec_targ	24.945444	Observer's specified target Dec [deg]
ra_nom	288.61282861538	Nominal RA [deg]
dec_nom	24.947711265231	Nominal Dec [deg]
roll_nom	54.020361730281	Nominal Roll [deg]
revision	3	Processing version of data
ontime	13451.866987258	Sum of GTIs [s]
livetime	13399.320631839	Livetime [s]
ontime2	13501.5	Sum of GTIs [s]
ontime3	13501.5	Sum of GTIs [s]
ontime5	13501.5	Sum of GTIs [s]
ontime6	13501.5	Sum of GTIs [s]
ontime7	13451.866987258	Sum of GTIs [s]
ontime8	13469.384164244	Sum of GTIs [s]
l2events	144296	Number of level 2 events



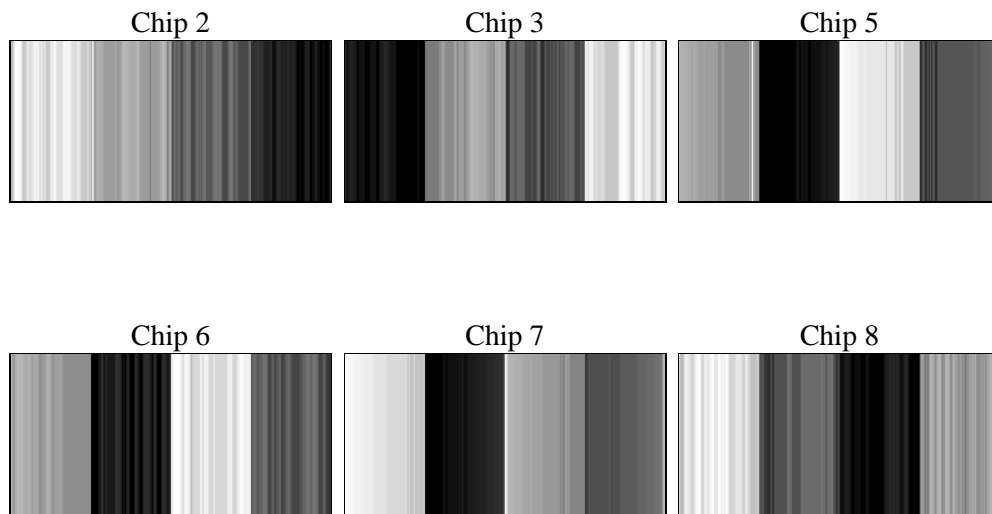
2 OBI

2.1 OBI

2.1.1 Images



2.1.2 Bias



2.1.3 Parameters

obi_num	0	Obi number	sched_exp_time	13835.460000	[s] Scheduled observation exposure time
ascdsver	8.4.5	Processing system revision	ontime	13451.866987258	Sum of GTIs [s]
caldbver	4.5.2	 	ontime2	13501.5	Sum of GTIs [s]
date	2012-10-23T09:06:41	Date and time of file creation	ontime3	13501.5	Sum of GTIs [s]
revision	3	Processing version of data	ontime5	13501.5	Sum of GTIs [s]
			ontime6	13501.5	Sum of GTIs [s]
			ontime7	13451.866987258	Sum of GTIs [s]
			ontime8	13469.384164244	Sum of GTIs [s]
			l1events	222951	Number of level 1 events

2.1.4 Events

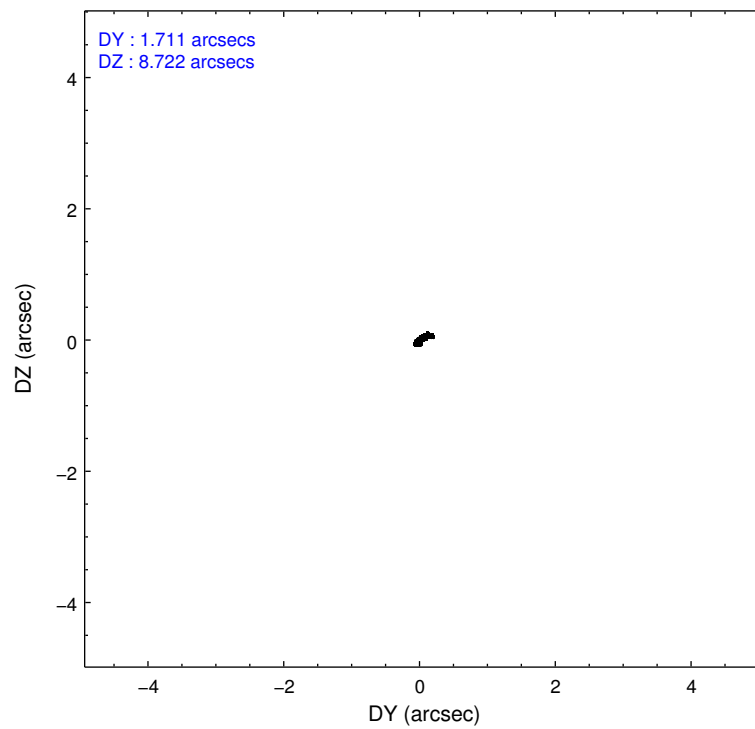
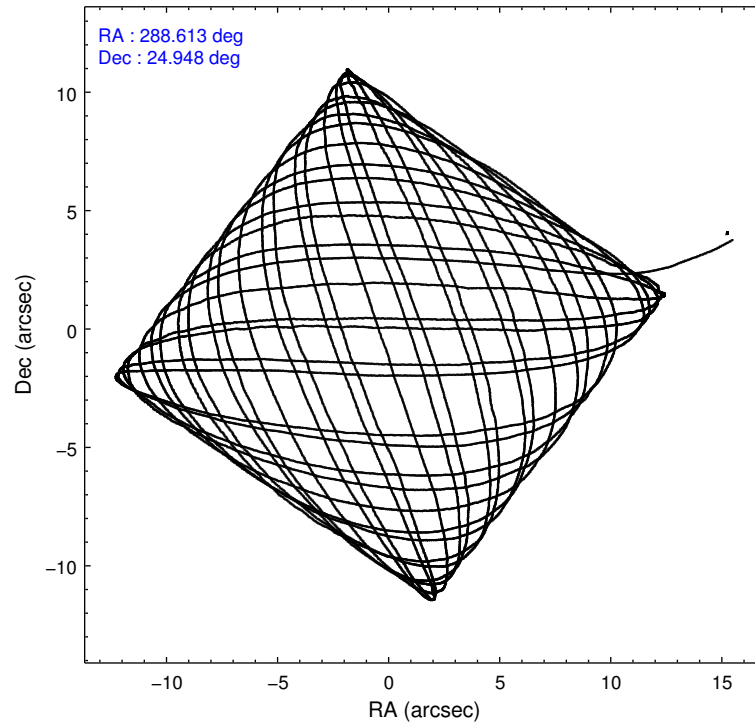
	ccd 2	ccd 3	ccd 5	ccd 6	ccd 7	ccd 8
level 1 events	16060	17066	84788	17289	55096	32652
rejected events	2839	3177	7676	3368	9376	4842
rejected %	17%	18%	9%	19%	17%	14%

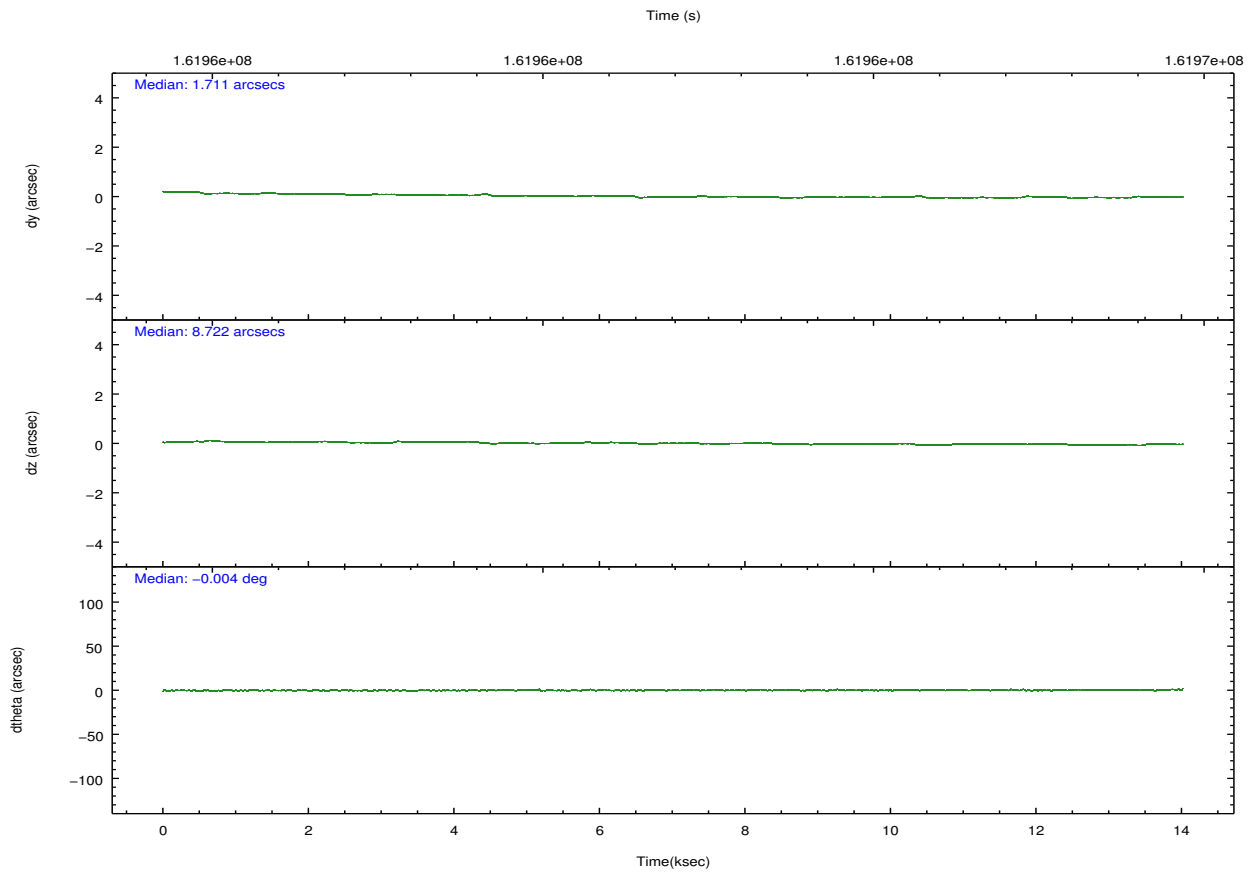
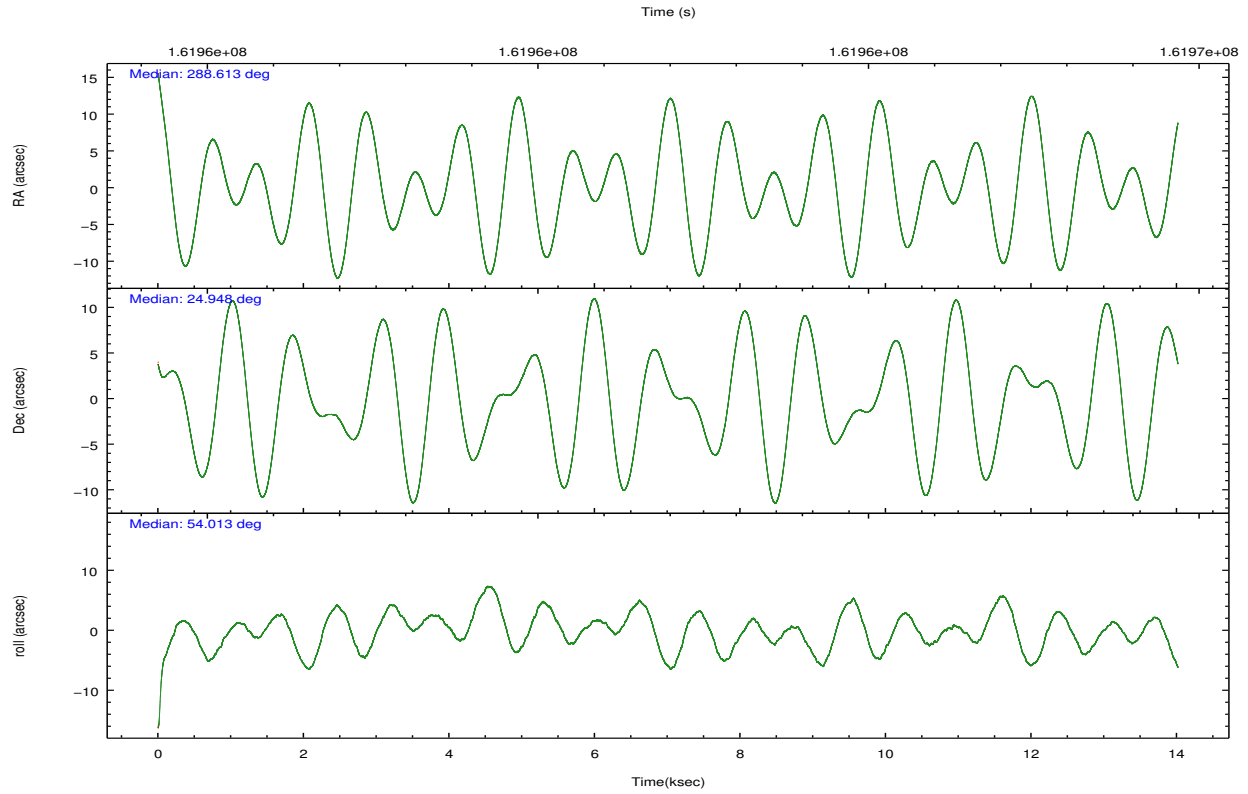
	ccd 2	ccd 3	ccd 5	ccd 6	ccd 7	ccd 8
grade 0 events	2003	1831	22125	1792	5117	5061
	12%	10%	26%	10%	9%	15%
grade 1 events	55	52	116	45	138	103
	0%	0%	0%	0%	0%	0%
grade 2 events	4787	5088	20277	5099	11324	8456
	29%	29%	23%	29%	20%	25%
grade 3 events	1827	2085	1675	1840	3501	3492
	11%	12%	1%	10%	6%	10%
grade 4 events	1906	1887	1638	1887	3555	3362
	11%	11%	1%	10%	6%	10%
grade 5 events	2780	3118	7528	3320	9232	4684
	17%	18%	8%	19%	16%	14%
grade 6 events	2702	3005	31429	3306	22229	7494
	16%	17%	37%	19%	40%	22%
grade 7 events	0	0	0	0	0	0
	0%	0%	0%	0%	0%	0%

2.2 Compared Parameters

Parameter	Planned	Actual	Parameter	Planned	Actual
Instrument	ACIS	ACIS	Obspar format version number	7	7
Detector	ACIS-235678	ACIS-235678	Obspar file type	PREDICTED	ACTUAL
Grating	NONE	NONE	Obspar update status	NONE	UPDATED
Data mode	CC33_FAINT	CC33_FAINT	Number of optional ACIS chips dropped	0	0
Observation mode	POINTING	POINTING	On-chip summing requested	N	N
[deg] Pointing RA	288.610129	288.6128286153807	Subarray requested	NONE	NONE
[deg] Pointing Dec	24.920594	24.94771126523084	Alternating exposures requested	N	N
[deg] Pointing Roll	53.864881	54.0203617302814	[s] Primary exposure time	0.000000	0
[mm] SIM focus pos	-0.684267	-0.6828225247311905			
[mm] SIM defocus	0	0.001444936568705701			
[mm] SIM translation stage pos	-190.132523	-190.1425803651734			
[mm] SIM translation stage offset	0	0.01005778216563158			
[s] Observation start time (MET)	161955145.184000	161954467.8053			
Observation start date	2003-02-18T11:31:21	2003-02-18T11:21:07			
[s] Observation end time (MET)	161968981.184000	161969295.45592			
Observation end date	2003-02-18T15:21:57	2003-02-18T15:28:15			
Read mode	CONTINUOUS	CONTINUOUS			

2.3 Aspect



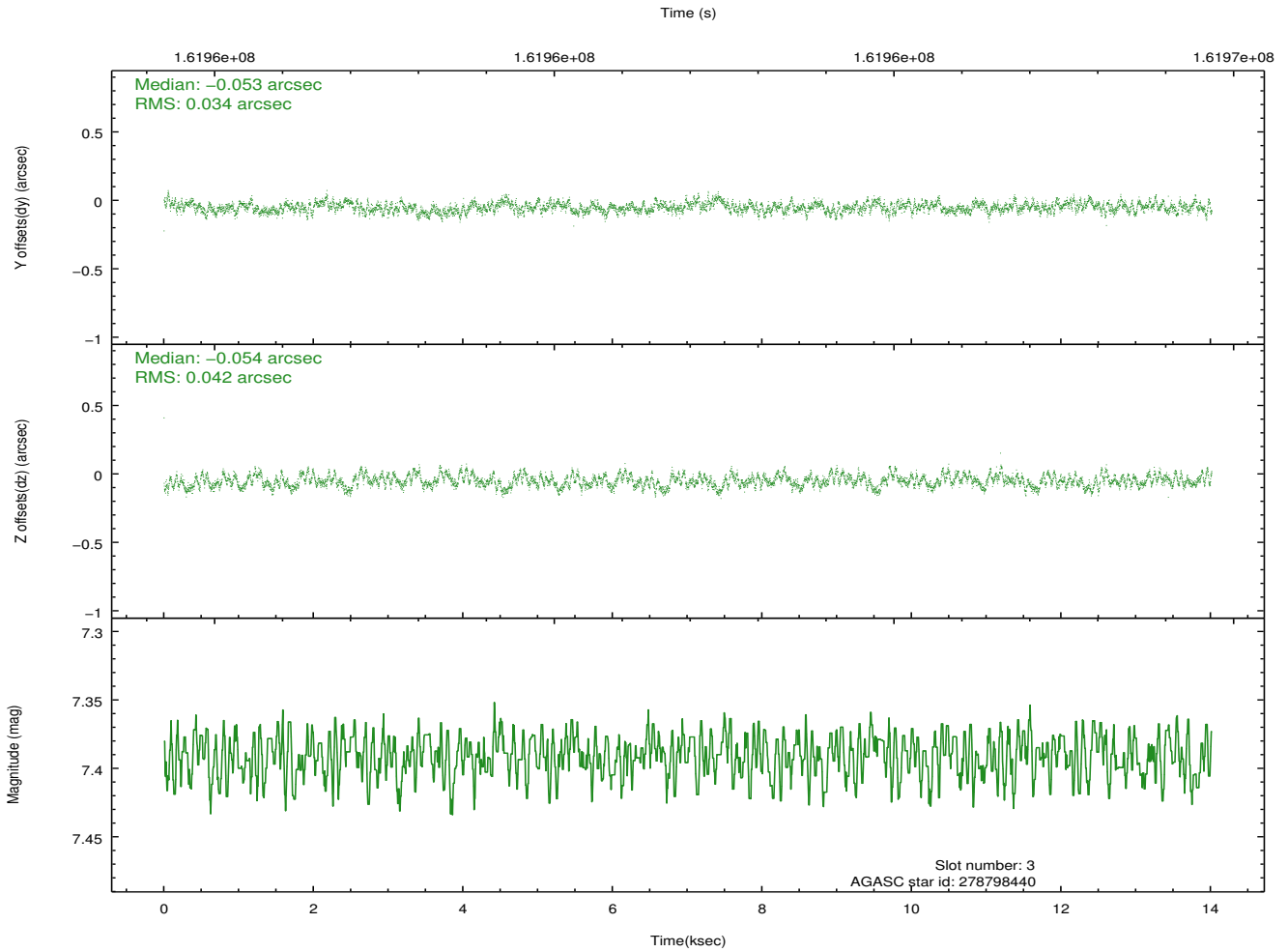
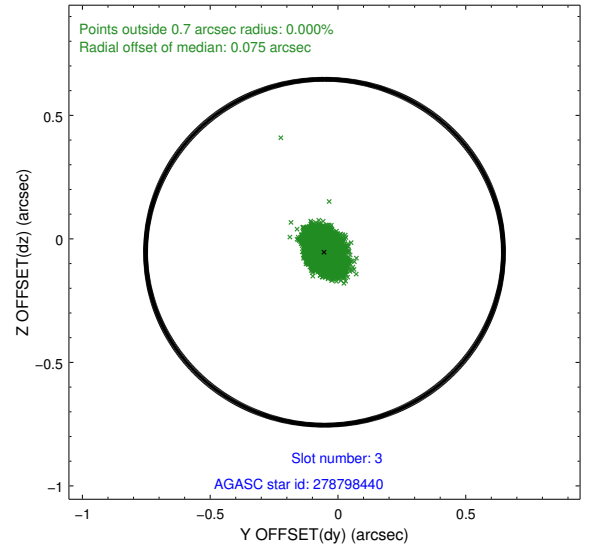
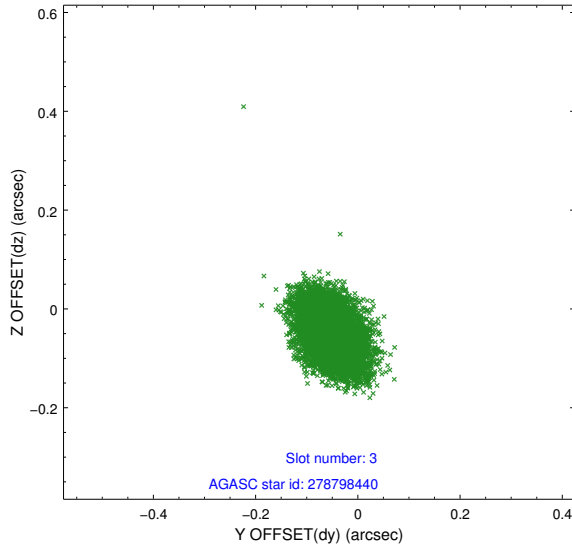


Slot Statistics

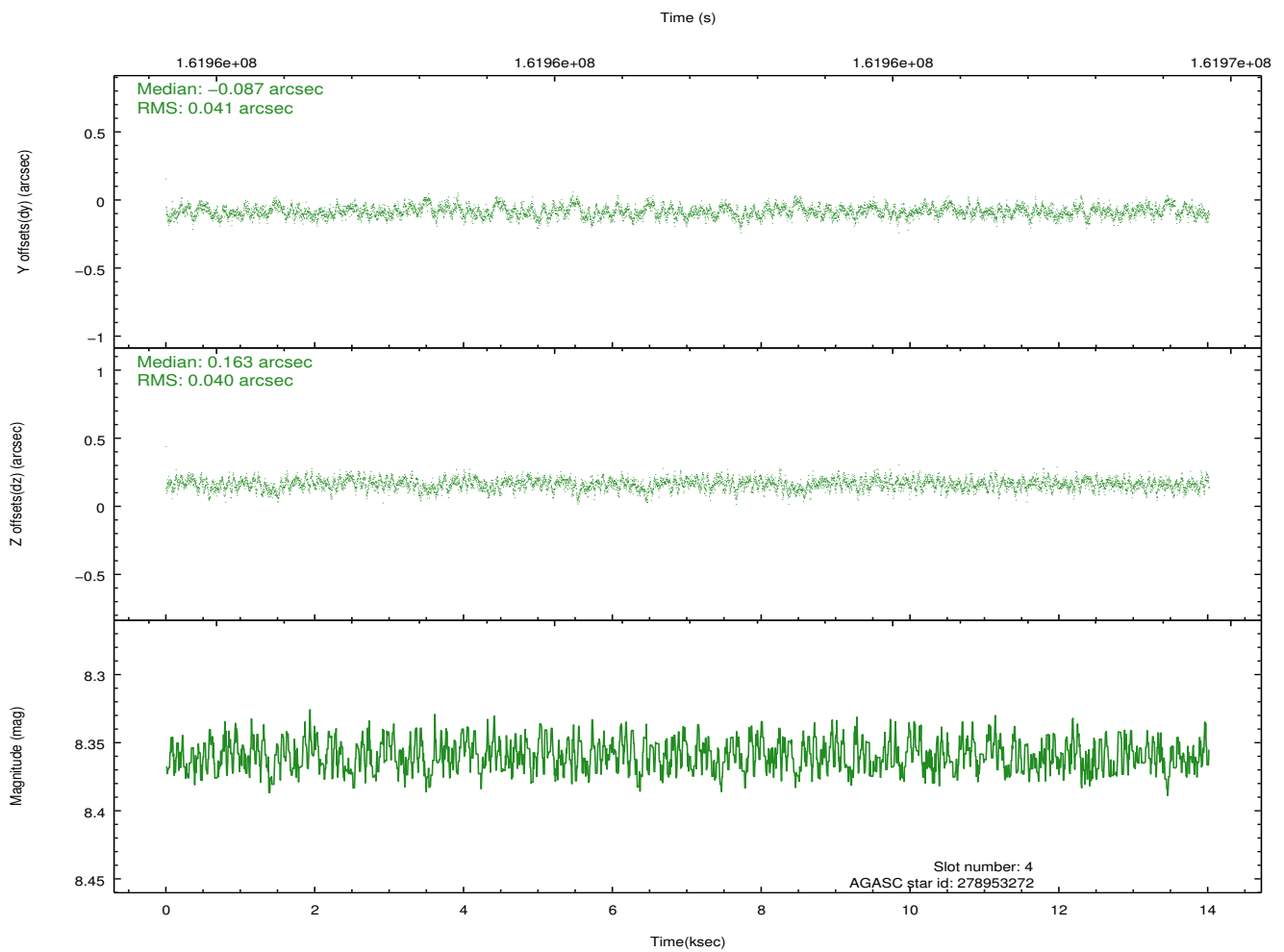
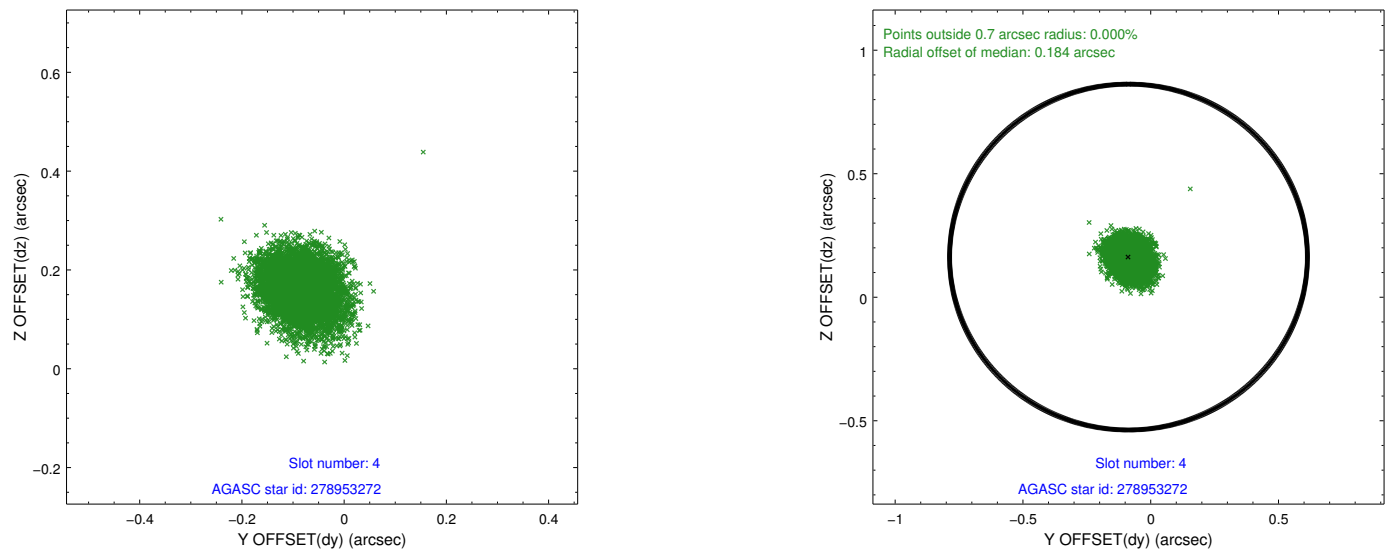
slot	status	id	mag	n_pts	med_dy	med_dz	dr1	dr2	ra	dec	mean_y	mean_z
0	FID	ACIS-S-2	7.10	3419	-0.038	-0.020	0.007	0.011	0.000000	0.000000	-754.38	-1729.91
1	FID	ACIS-S-4	7.20	3419	-0.000	0.024	0.005	0.010	0.000000	0.000000	2158.79	178.27
2	FID	ACIS-S-5	7.23	3418	0.007	0.005	0.007	0.011	0.000000	0.000000	-1806.74	172.31
3	GUIDE	278798440	7.39	6837	-0.053	-0.054	0.057	0.094	288.472447	25.758823	2173.92	2140.57
4	GUIDE	278953272	8.36	6838	-0.087	0.163	0.060	0.100	289.216166	24.729034	615.71	-2003.83
5	GUIDE	278266312	9.55	6832	0.137	0.051	0.105	0.186	288.641308	24.187100	-2071.70	-1640.23
6	GUIDE	278795448	8.96	6835	0.082	-0.126	0.101	0.151	287.699473	24.798355	-2102.74	2149.34
7	GUIDE	278950872	8.56	6835	-0.081	-0.042	0.066	0.106	288.955805	24.789192	285.19	-1190.10

2.4 Star Slots

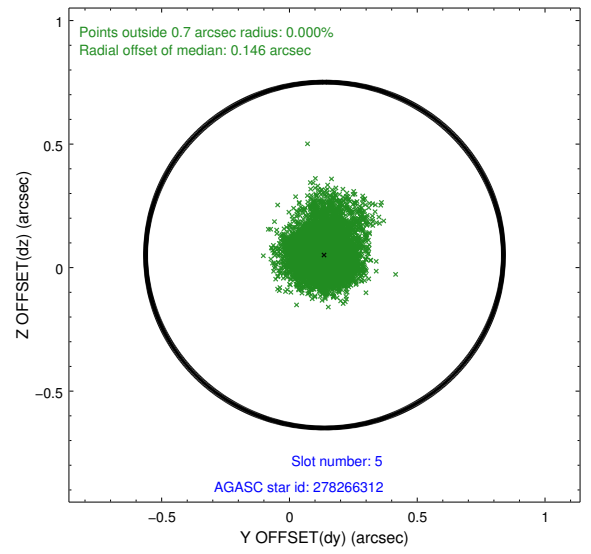
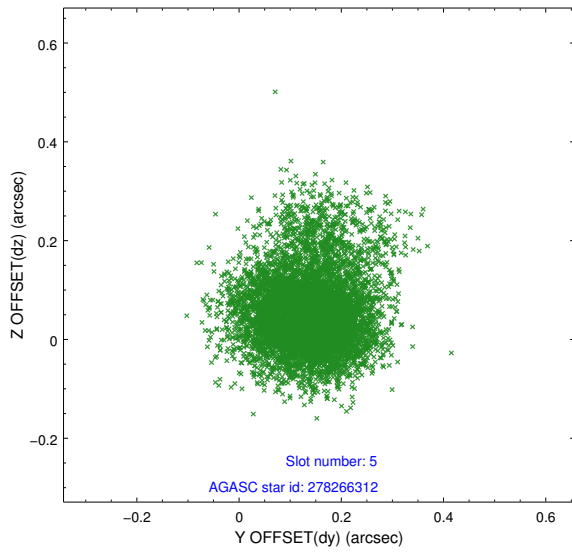
2.4.1 Slot 3



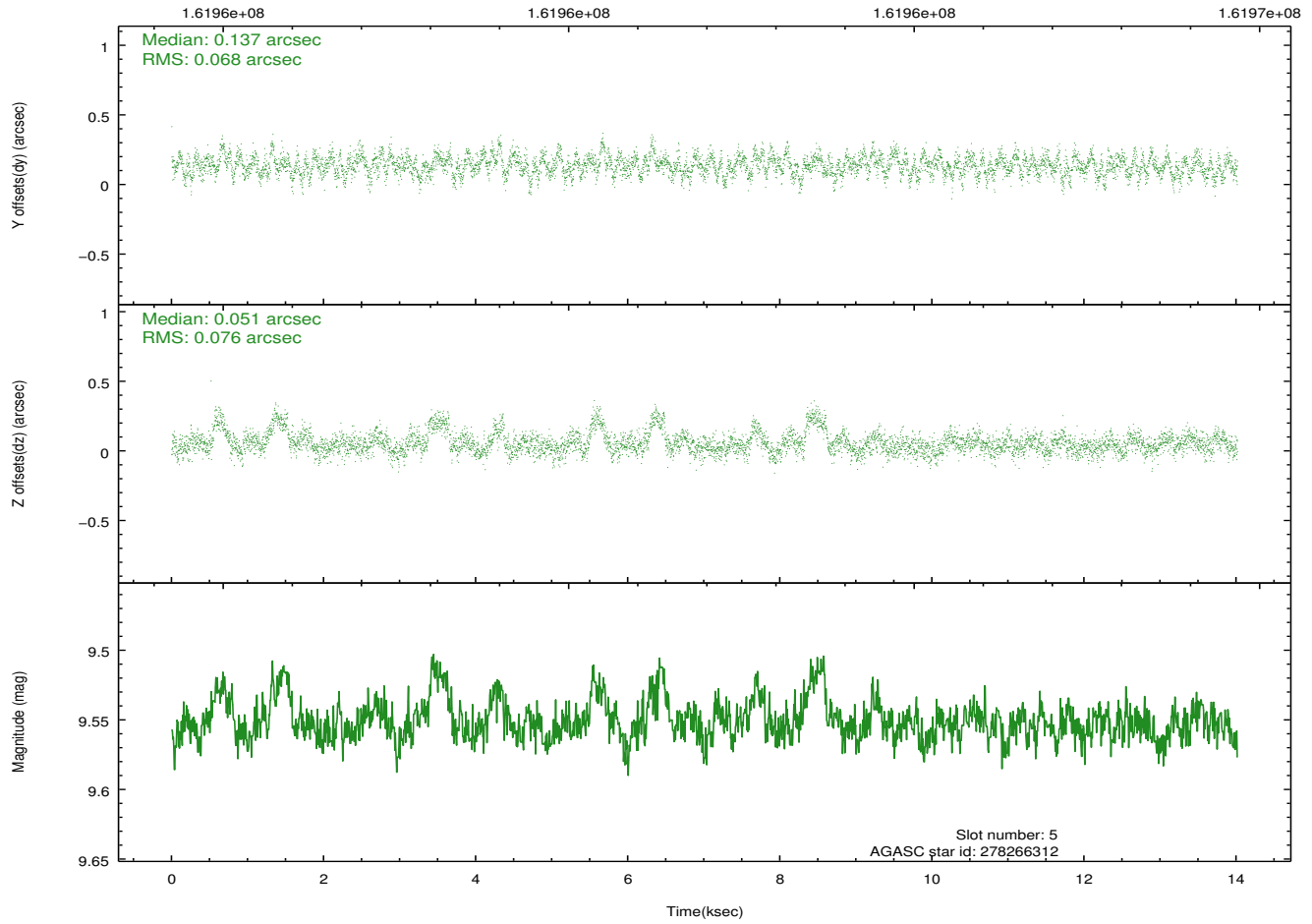
2.4.2 Slot 4



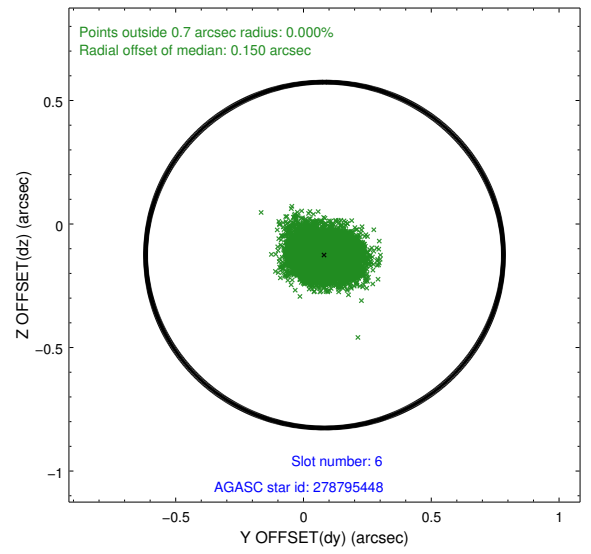
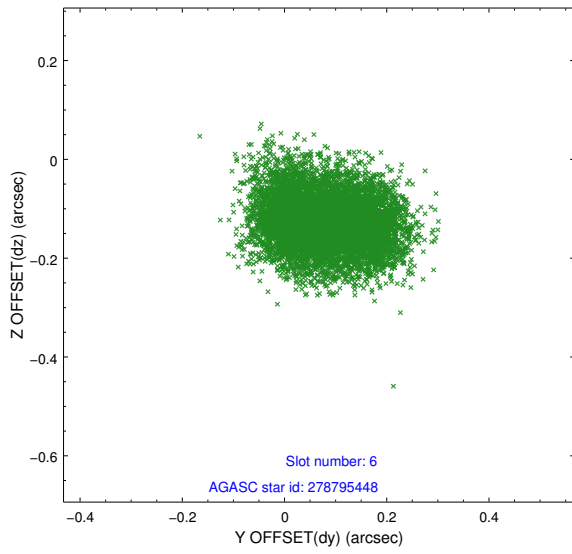
2.4.3 Slot 5



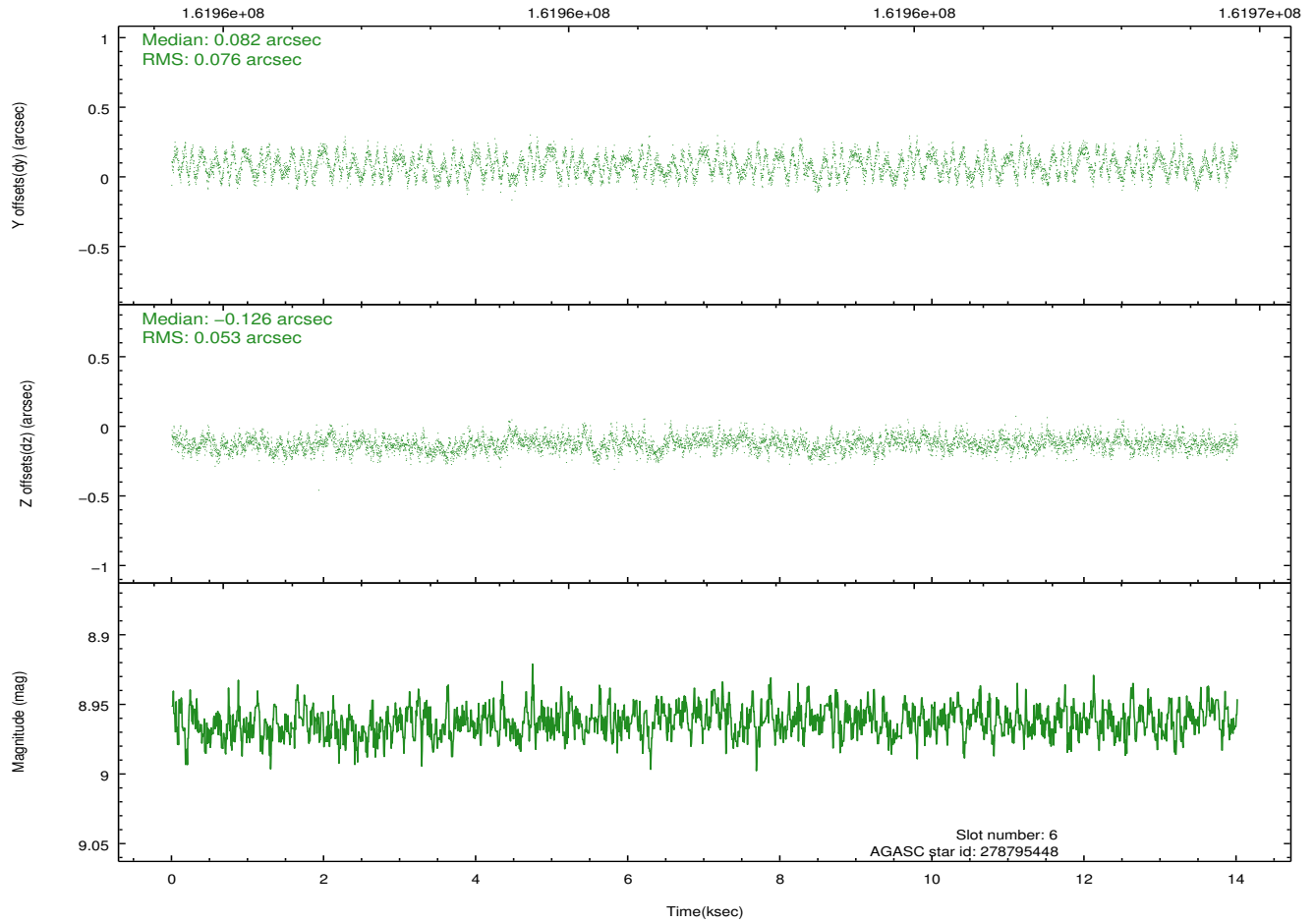
Time (s)



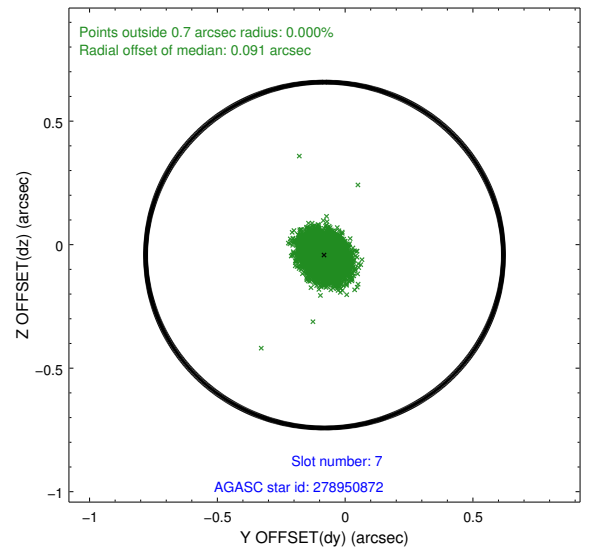
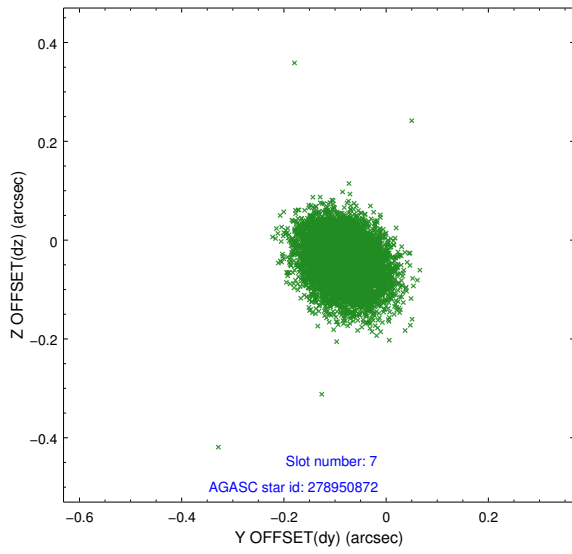
2.4.4 Slot 6



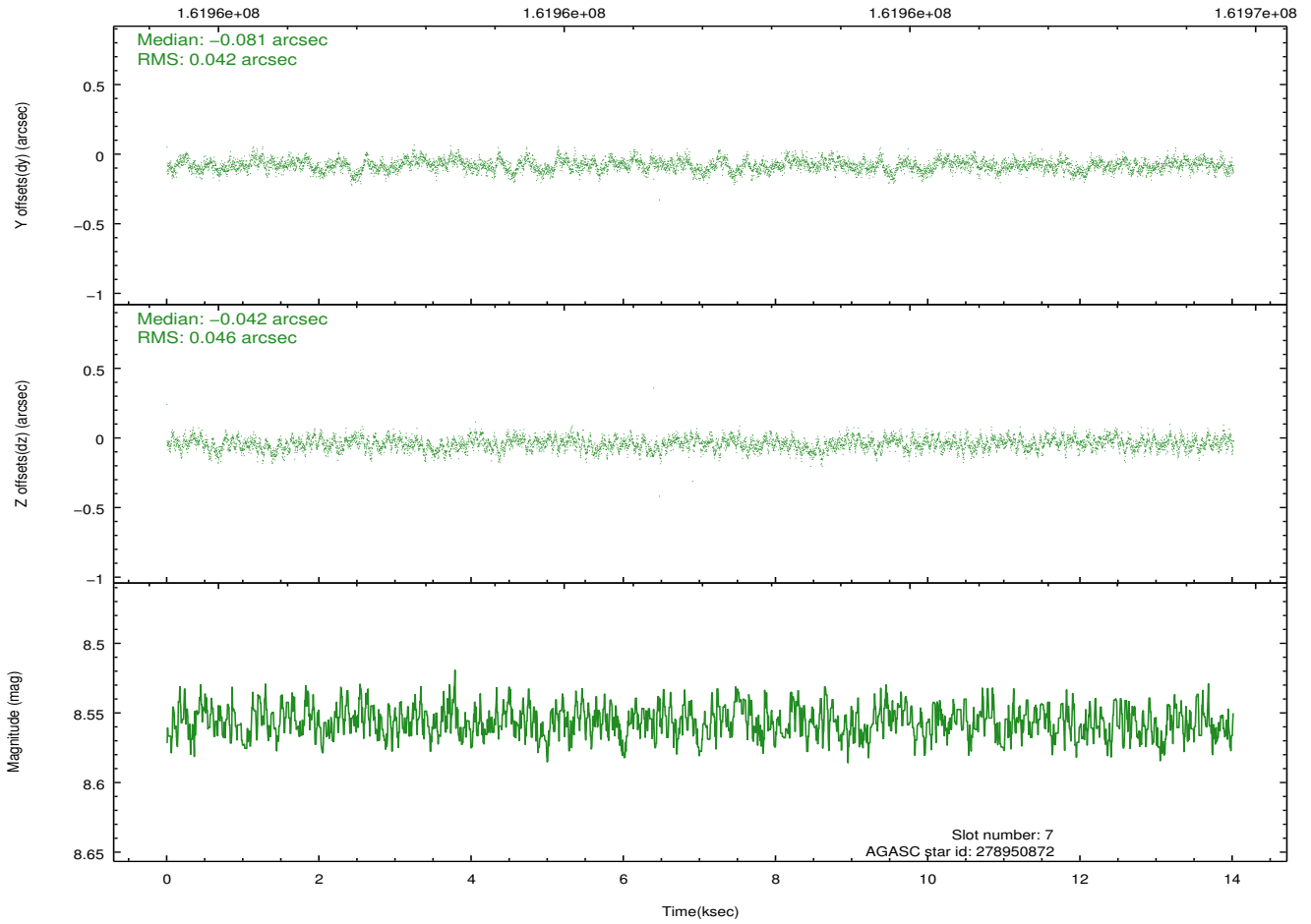
Time (s)



2.4.5 Slot 7

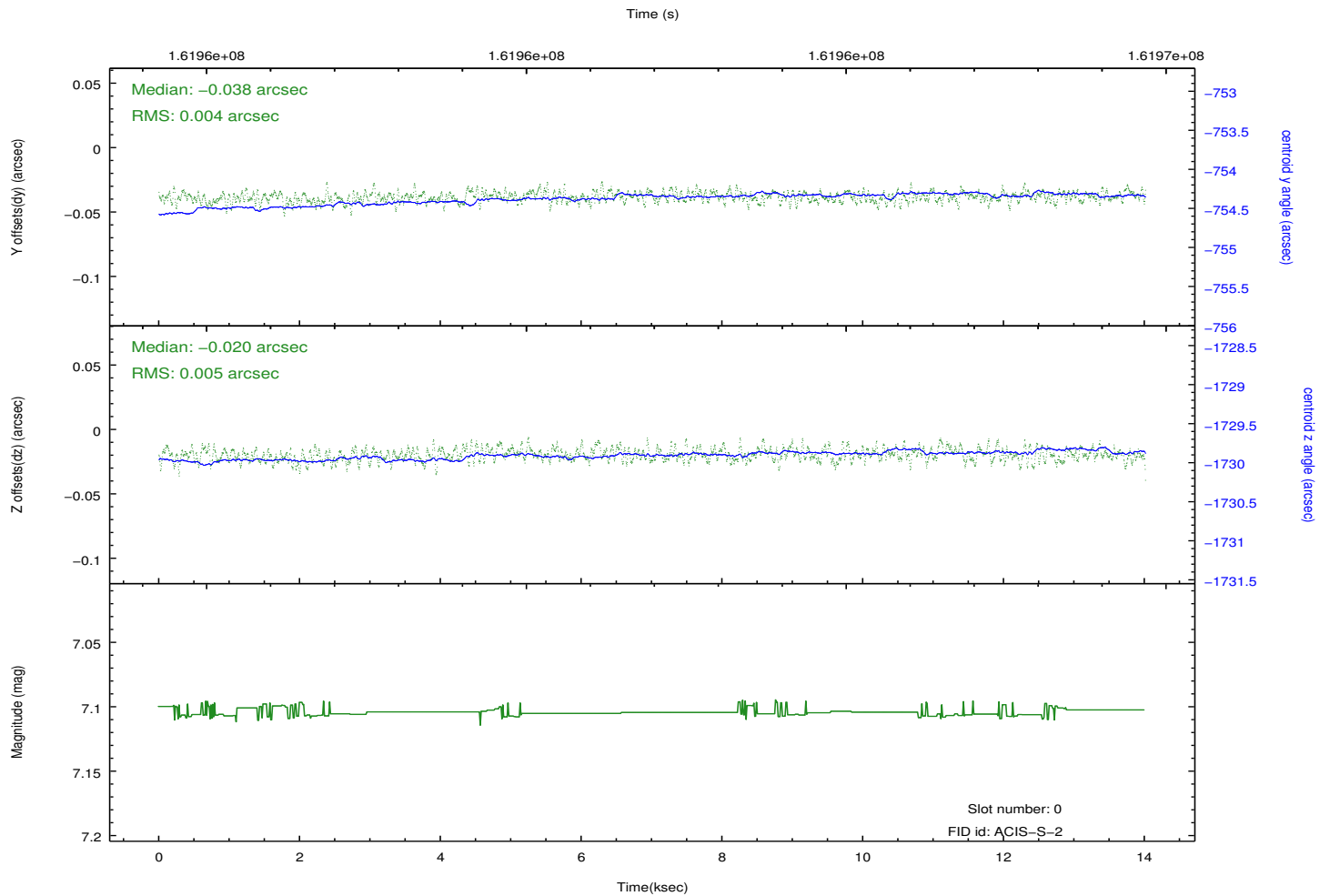
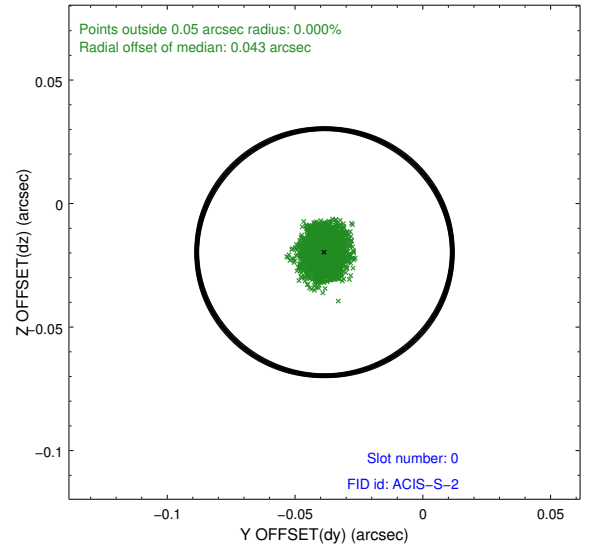
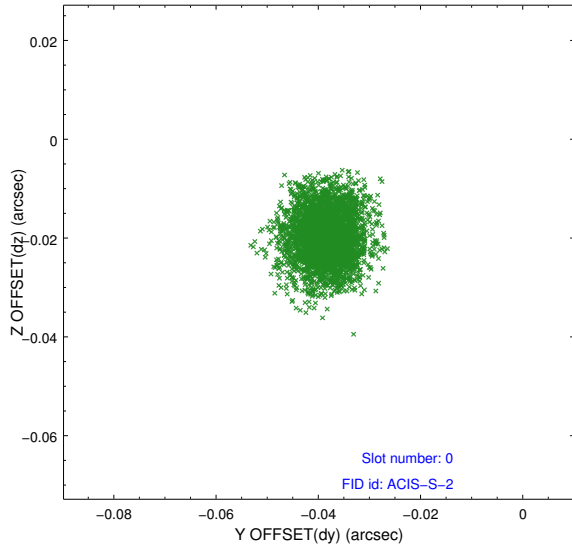


Time (s)

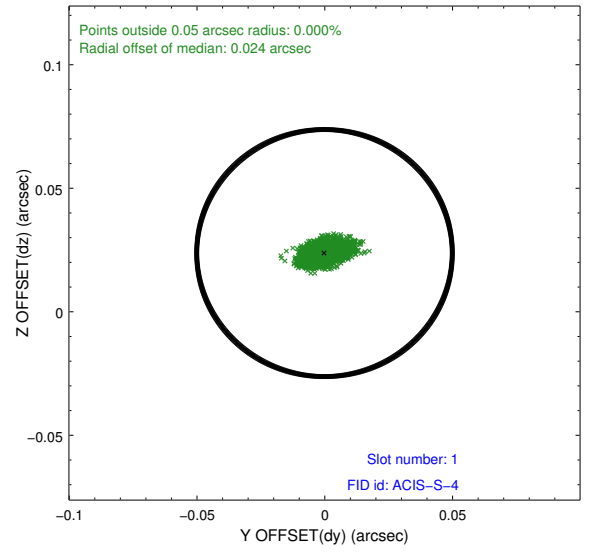
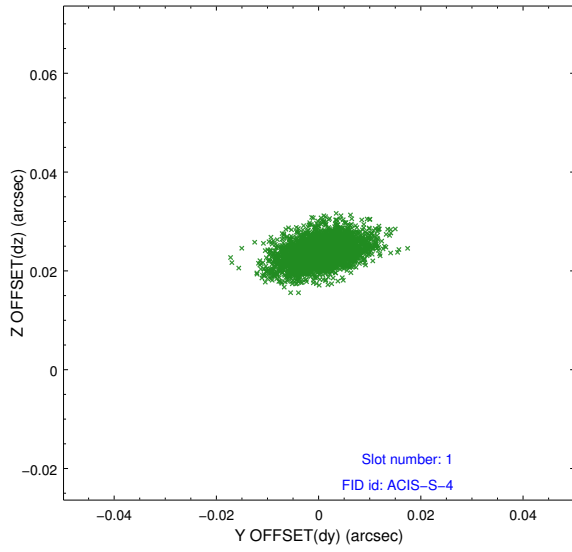


2.5 FID Slots

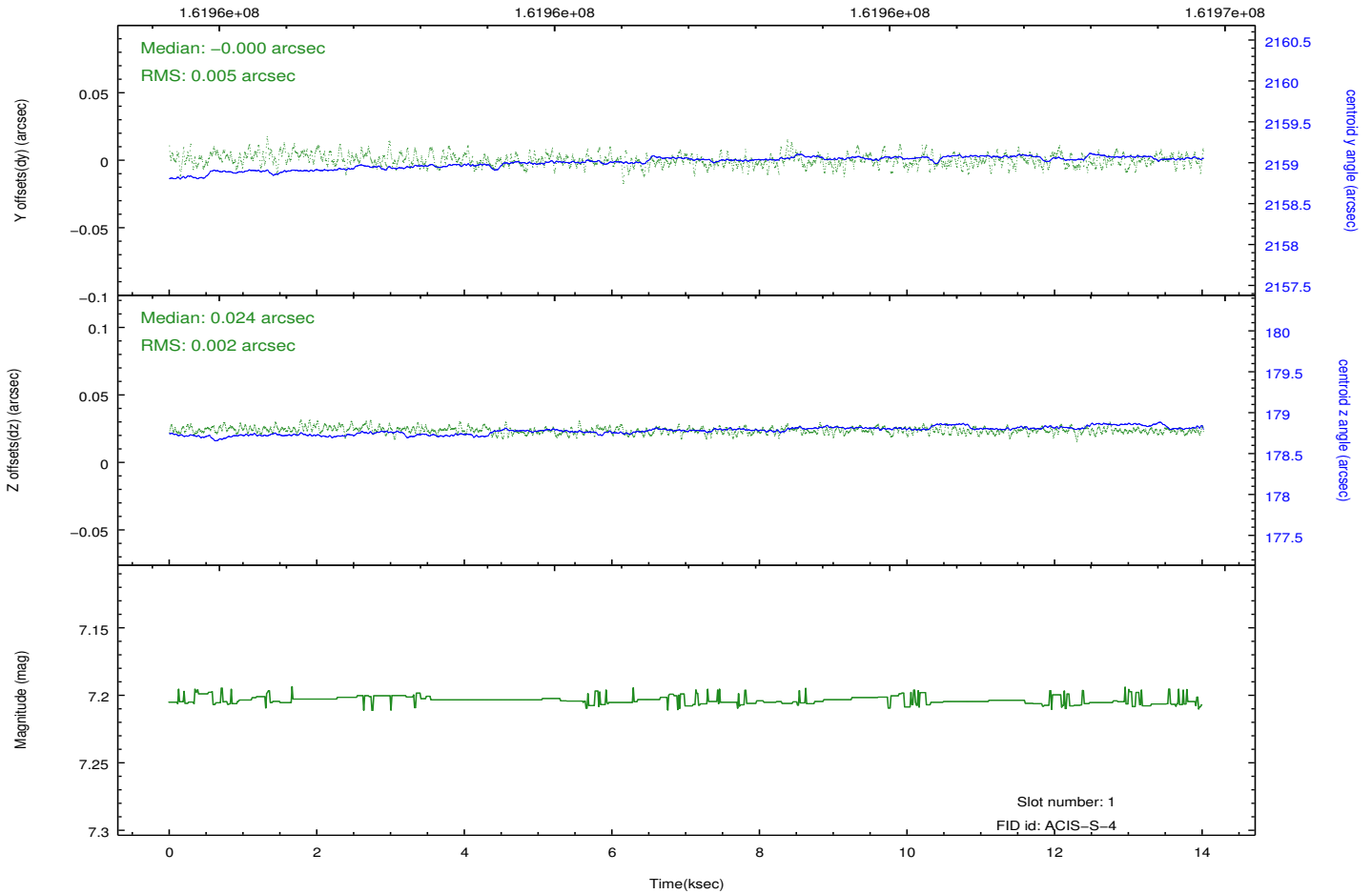
2.5.1 Slot 0



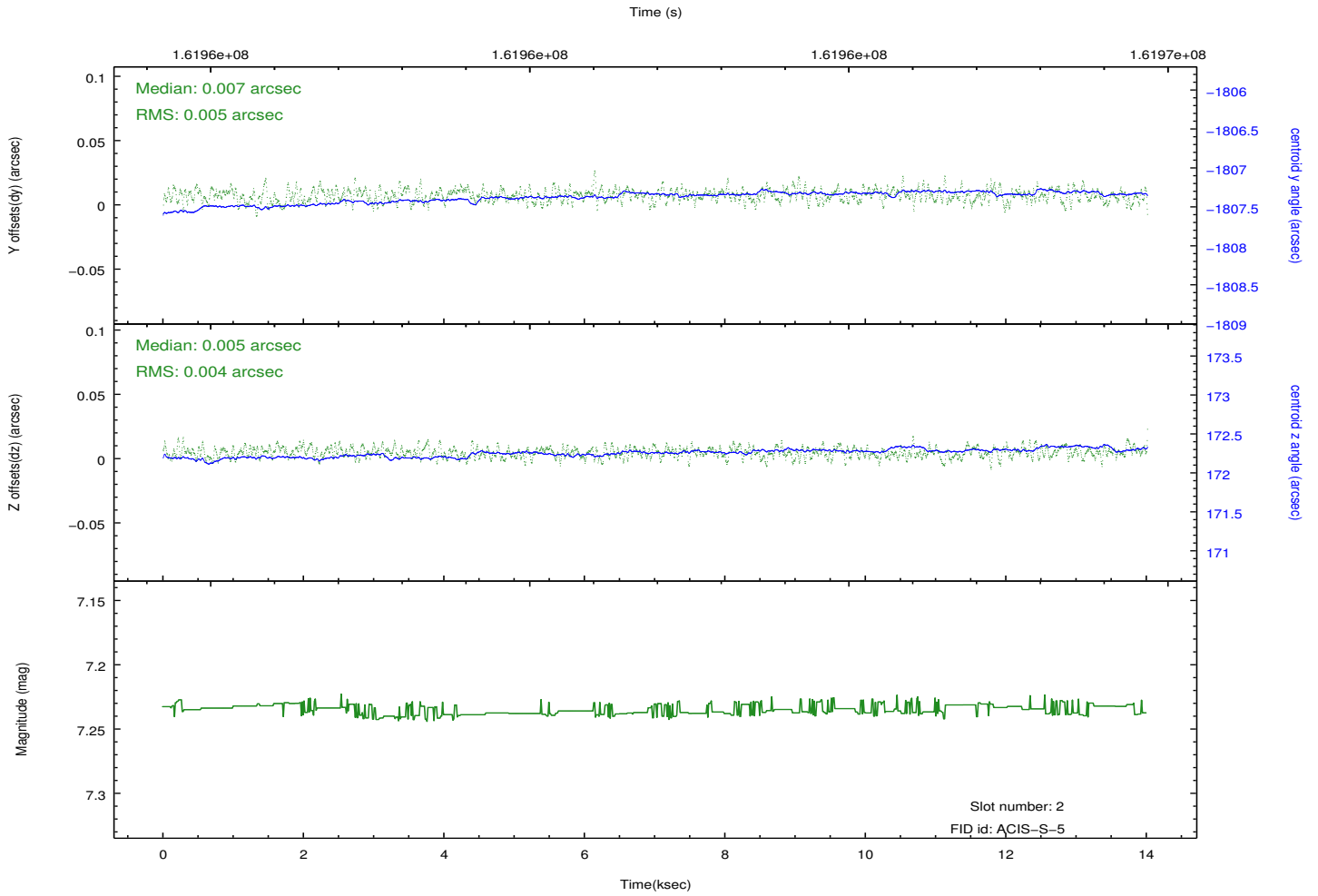
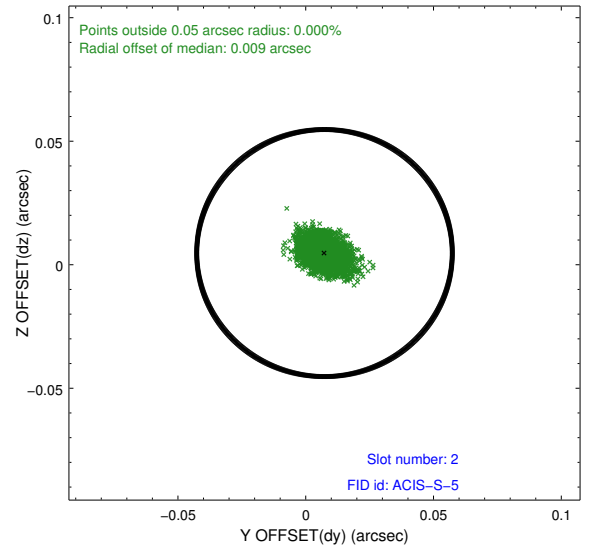
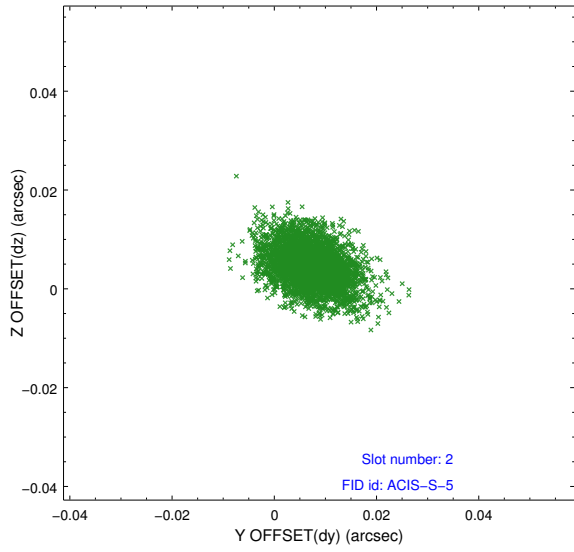
2.5.2 Slot 1



Time (s)



2.5.3 Slot 2



A Summary

A.1 Status

V&V Scientist	Joy Nichols
V&V Date (YYYY-MM-DD)	2012.11.06
V&V Edition	1
V&V Disposition and Status	OK
V&V Charge Time	13.456

A.2 Comments