

V&V Reference Report

L2 ASCDS Version : 8.4.5

Observation 4449 - L2 Version 3
Chandra X-Ray Center

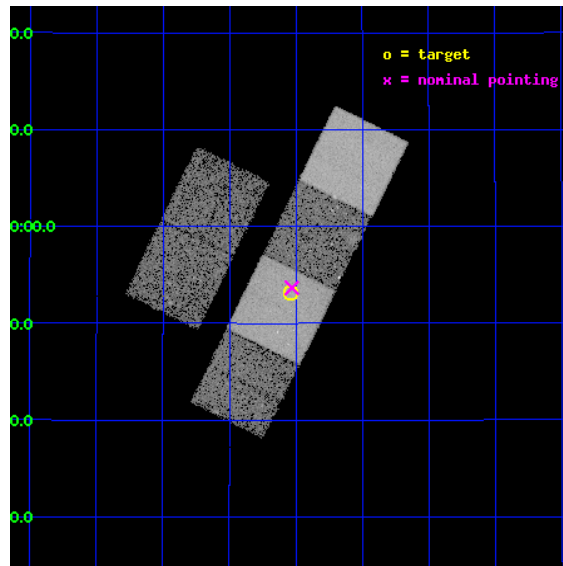
L2 Processing Date : Nov 3 2012

Contents

1	Front	2
2	OBI	3
2.1	OBI	3
2.1.1	Images	3
2.1.2	Bias	3
2.1.3	Parameters	4
2.1.4	Events	4
2.2	Compared Parameters	5
2.3	Aspect	6
2.4	Star Slots	9
2.4.1	Slot 3	9
2.4.2	Slot 4	10
2.4.3	Slot 5	11
2.4.4	Slot 6	12
2.4.5	Slot 7	13
2.5	FID Slots	14
2.5.1	Slot 0	14
2.5.2	Slot 1	15
2.5.3	Slot 2	16
A	Summary	17
A.1	Status	17
A.2	Comments	17

1 Front

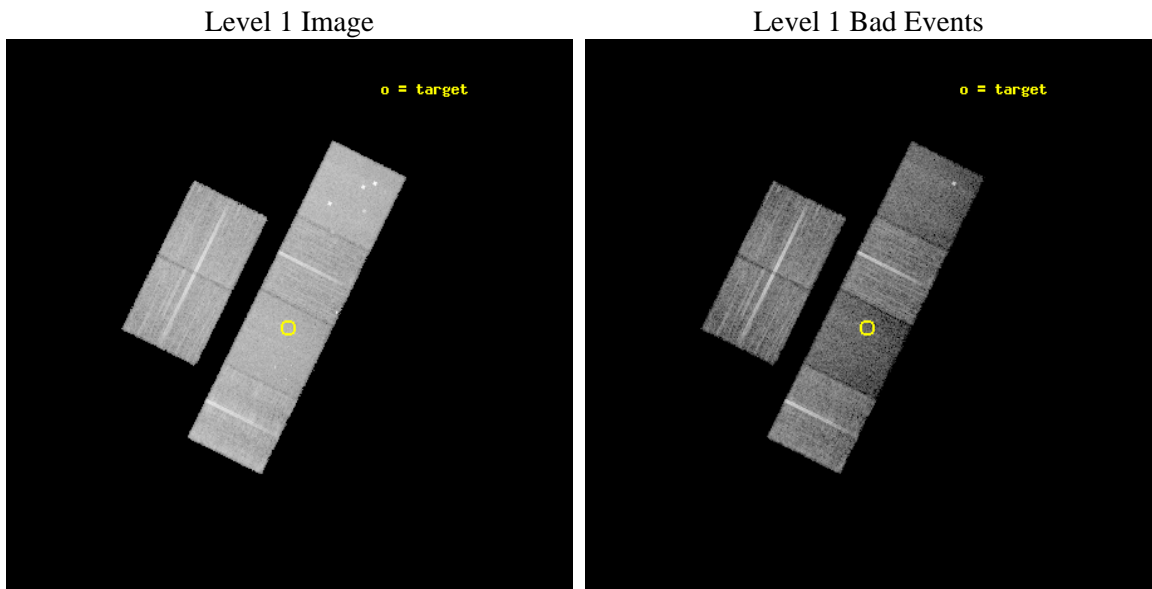
seq_num	500413	Sequence number
obs_id	4449	Observation id
title	SN2002ic and its Circumstellar Medium	Proposal title
observer	Prof. John Hughes	Principal investigator
object	SN 2002ic	Source name
dtcycle	0	
cycle	P	events from which exps? Prim/Second/Both
ra_targ	22.510417	Observer's specified target RA [deg]
dec_targ	21.88525	Observer's specified target Dec [deg]
ra_nom	22.507509751301	Nominal RA [deg]
dec_nom	21.894503323676	Nominal Dec [deg]
roll_nom	116.27907098992	Nominal Roll [deg]
revision	3	Processing version of data
ontime	18435.199931324	Sum of GTIs [s]
livetime	18201.762329448	Livetime [s]
ontime2	18435.199931324	Sum of GTIs [s]
ontime3	18435.199931324	Sum of GTIs [s]
ontime5	18435.199931324	Sum of GTIs [s]
ontime6	18435.199931324	Sum of GTIs [s]
ontime7	18435.199931324	Sum of GTIs [s]
ontime8	18435.199931324	Sum of GTIs [s]
l2events	151027	Number of level 2 events



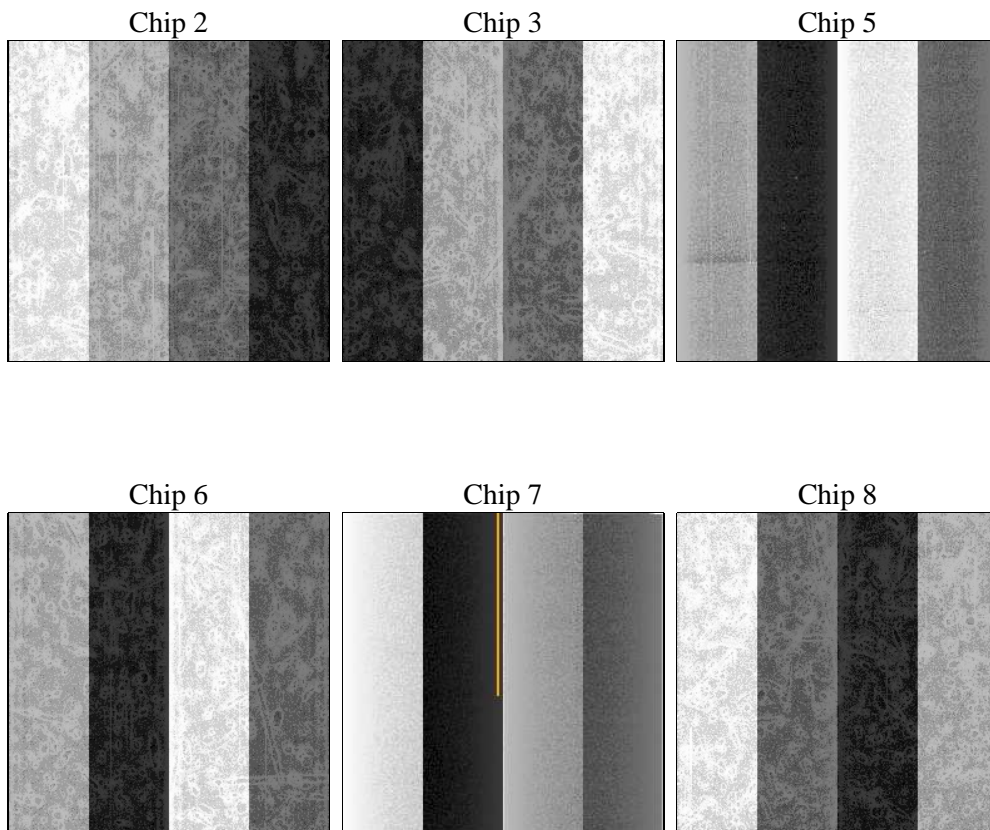
2 OBI

2.1 OBI

2.1.1 Images



2.1.2 Bias



2.1.3 Parameters

obi_num	0	Obi number	sched_exp_time	18283.436000	[s] Scheduled observation exposure time
ascdsver	8.4.5	Processing system revision	ontime	18435.199931324	Sum of GTIs [s]
caldbver	4.5.2	 	ontime2	18435.199931324	Sum of GTIs [s]
date	2012-11-03T14:46:07	Date and time of file creation	ontime3	18435.199931324	Sum of GTIs [s]
revision	3	Processing version of data	ontime5	18435.199931324	Sum of GTIs [s]
			ontime6	18435.199931324	Sum of GTIs [s]
			ontime7	18435.199931324	Sum of GTIs [s]
			ontime8	18435.199931324	Sum of GTIs [s]
			l1events	655768	Number of level 1 events

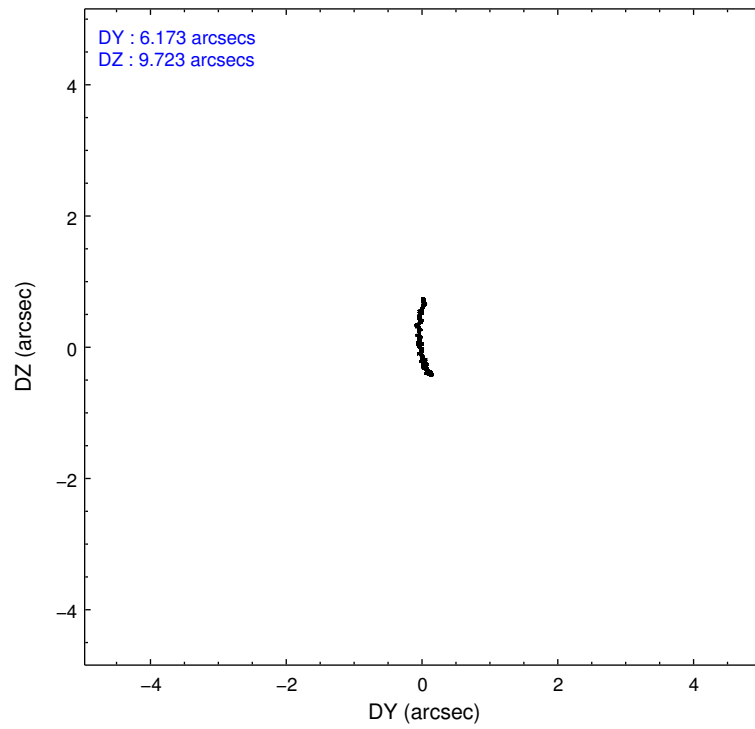
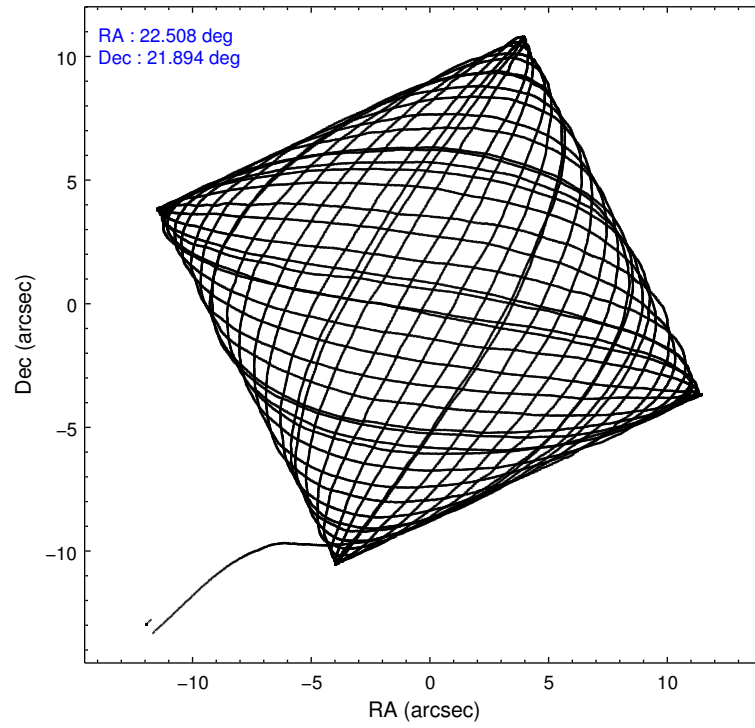
2.1.4 Events

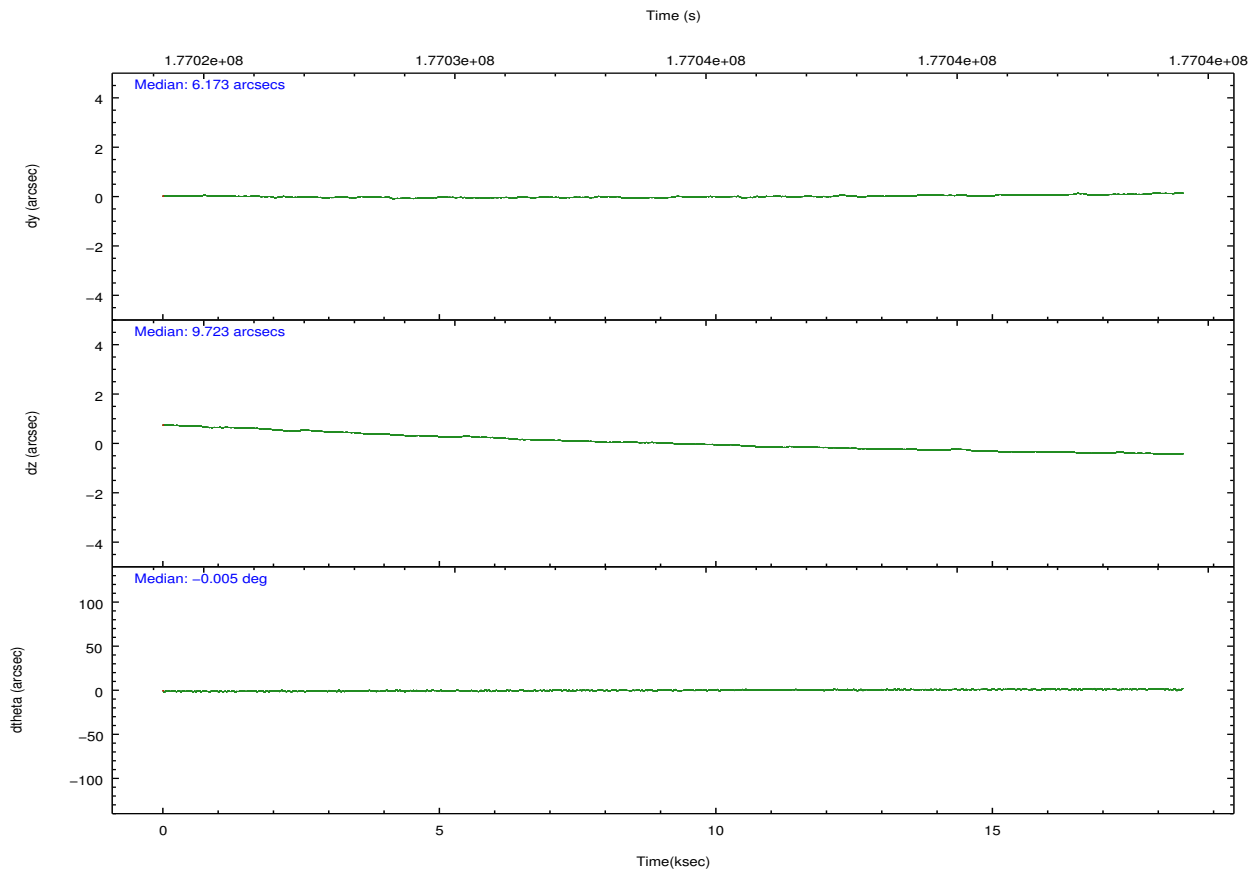
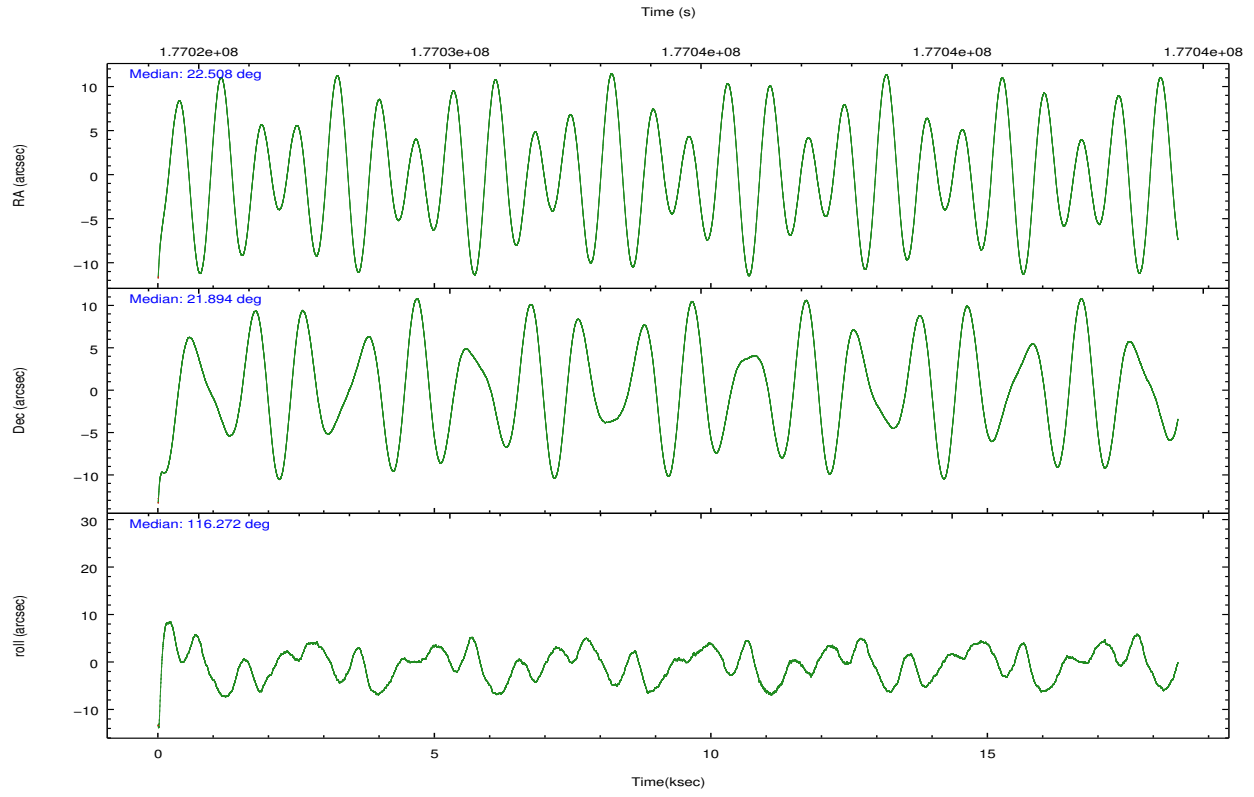
	ccd 2	ccd 3	ccd 5	ccd 6	ccd 7	ccd 8		ccd 2	ccd 3	ccd 5	ccd 6	ccd 7	ccd 8
level 1 events	102752	95636	132112	100510	102804	121954	grade 0 events	4548	4435	11256	6124	5839	9148
rejected events	92841	86272	62182	88640	50249	95316		4%	4%	8%	6%	5%	7%
rejected %	90%	90%	47%	88%	48%	78%	grade 1 events	55	53	296	56	91	91
								0%	0%	0%	0%	0%	0%
							grade 2 events	2334	1981	22085	2375	11691	6476
								2%	2%	16%	2%	11%	5%
							grade 3 events	1125	1051	4077	1185	5379	2990
								1%	1%	3%	1%	5%	2%
							grade 4 events	1139	1039	3922	1197	5301	2916
								1%	1%	2%	1%	5%	2%
							grade 5 events	2758	3012	10476	3218	9749	4839
								2%	3%	7%	3%	9%	3%
							grade 6 events	1628	1678	35209	1979	29198	7546
								1%	1%	26%	1%	28%	6%
							grade 7 events	89165	82387	44791	84376	35556	87948
								86%	86%	33%	83%	34%	72%

2.2 Compared Parameters

Parameter	Planned	Actual	Parameter	Planned	Actual
Instrument	ACIS	ACIS	Obspar format version number	7	7
Detector	ACIS-235678	ACIS-235678	Obspar file type	PREDICTED	ACTUAL
Grating	NONE	NONE	Obspar update status	NONE	UPDATED
Data mode	VFAINT	VFAINT	Number of optional ACIS chips dropped	0	0
Observation mode	POINTING	POINTING	On-chip summing requested	N	N
[deg] Pointing RA	22.532138	22.50750975130074	Subarray requested	NONE	NONE
[deg] Pointing Dec	21.879720	21.89450332367572	Alternating exposures requested	N	N
[deg] Pointing Roll	116.113275	116.2790709899228	[s] Primary exposure time	0.000000	3.2
[mm] SIM focus pos	-0.684267	-0.6828225247311905			
[mm] SIM defocus	0	0.001444936568705701			
[mm] SIM translation stage pos	-190.132523	-190.1425803651734			
[mm] SIM translation stage offset	0	0.01005778216563158			
[s] Observation start time (MET)	177025283.184000	177023435.21864			
Observation start date	2003-08-11T21:40:19	2003-08-11T21:10:35			
[s] Observation end time (MET)	177043566.184000	177043880.89451			
Observation end date	2003-08-12T02:45:02	2003-08-12T02:51:20			
Read mode	TIMED	TIMED			

2.3 Aspect



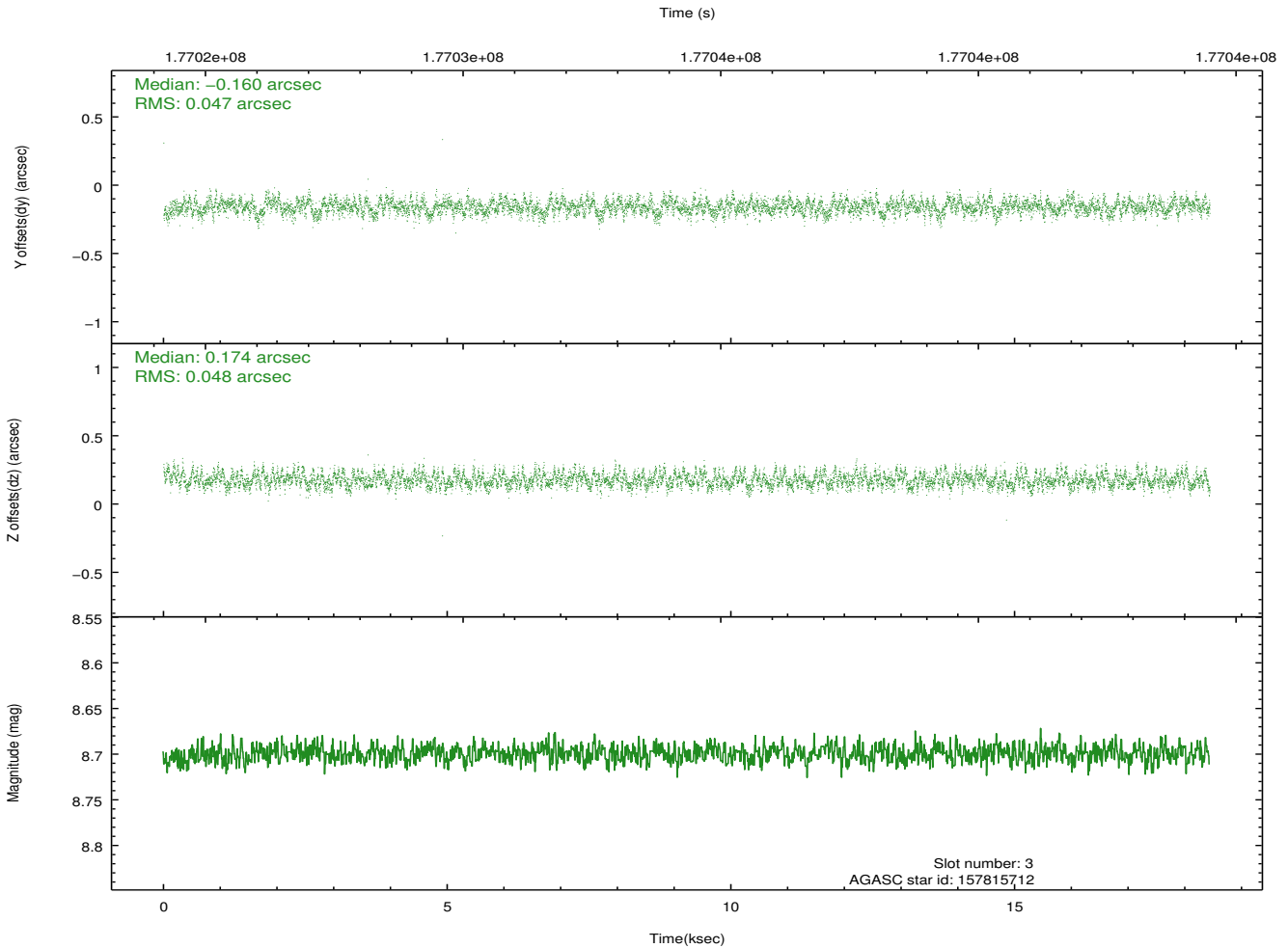
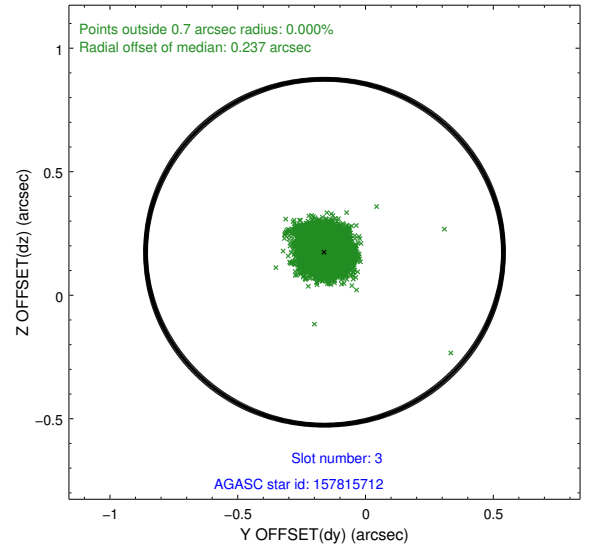
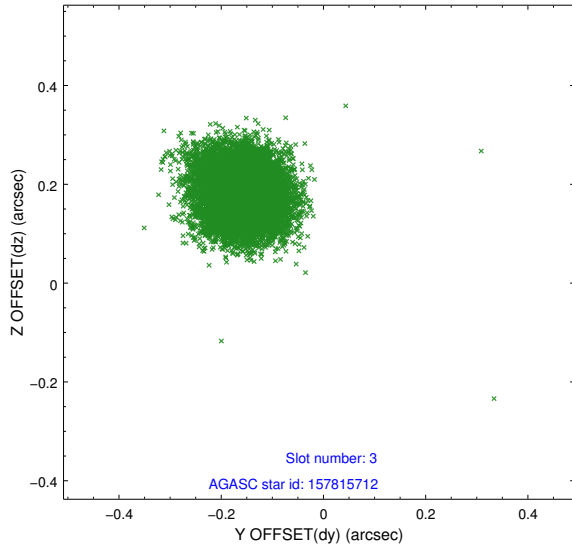


Slot Statistics

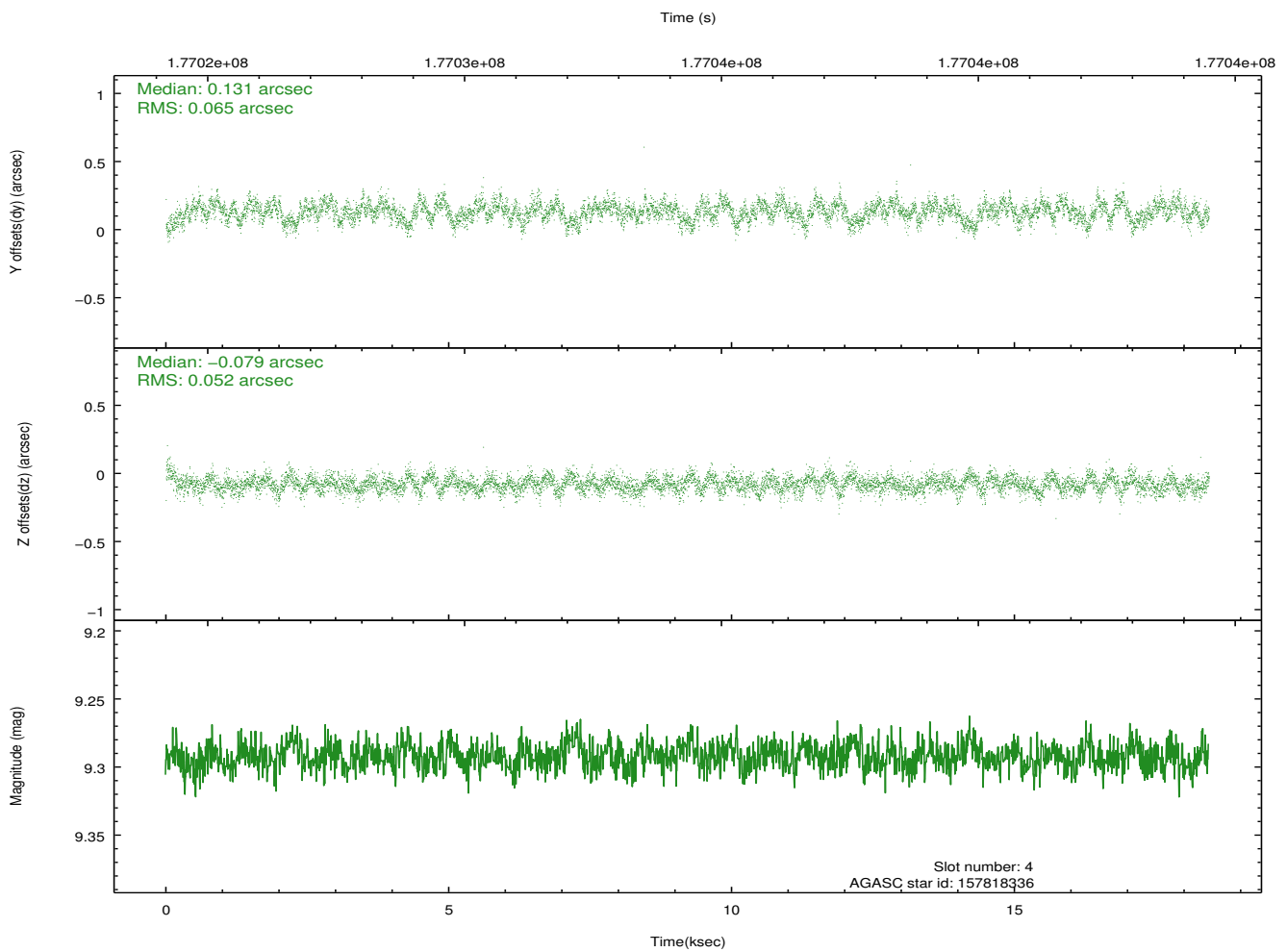
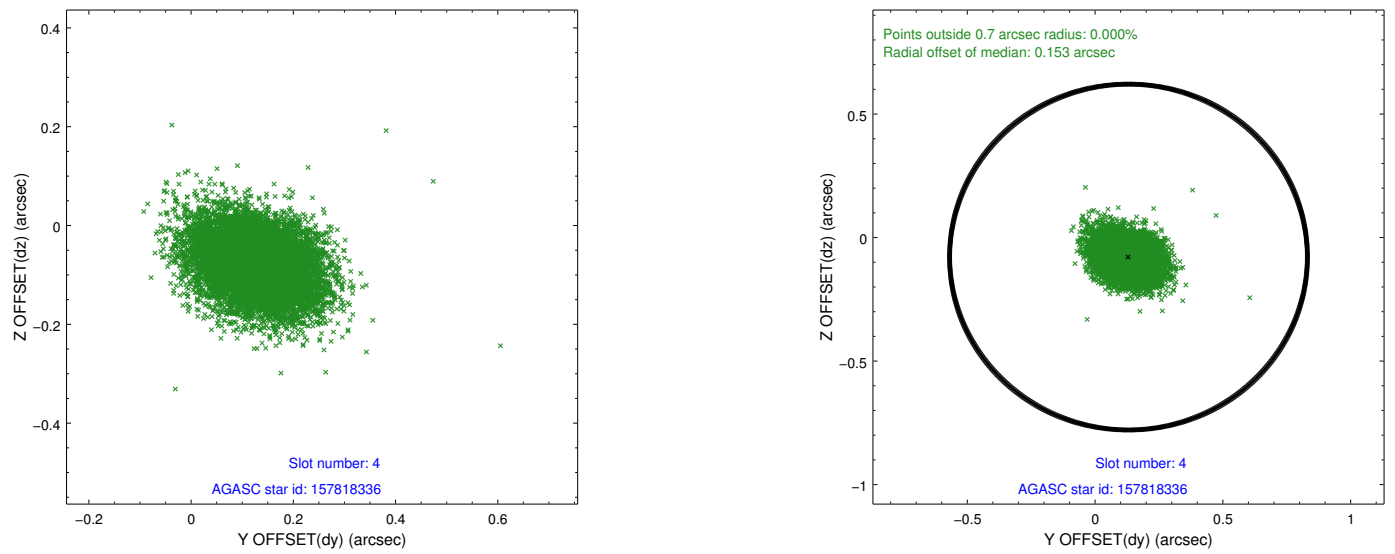
slot	status	id	mag	n_pts	med_dy	med_dz	dr1	dr2	ra	dec	mean_y	mean_z
0	FID	ACIS-S-2	7.10	4498	-0.057	-0.025	0.011	0.017	0.000000	0.000000	-758.95	-1730.99
1	FID	ACIS-S-4	7.20	4498	0.067	0.034	0.005	0.010	0.000000	0.000000	2154.33	177.36
2	FID	ACIS-S-5	7.23	4498	-0.041	-0.001	0.011	0.018	0.000000	0.000000	-1811.52	171.20
3	GUIDE	157815712	8.70	8993	-0.160	0.174	0.072	0.112	22.528658	22.348362	1520.24	-732.06
4	GUIDE	157818336	9.29	8991	0.131	-0.079	0.088	0.146	22.263608	21.605475	-489.72	1241.12
5	GUIDE	157818560	8.81	8990	-0.080	-0.272	0.073	0.116	21.901161	21.708153	378.17	2165.04
6	GUIDE	157818840	9.68	8992	-0.050	0.442	0.110	0.176	23.168703	22.070919	-312.09	-2211.06
7	GUIDE	157819968	9.98	8888	0.163	-0.271	0.140	0.220	22.173002	21.133467	-1880.17	2264.08

2.4 Star Slots

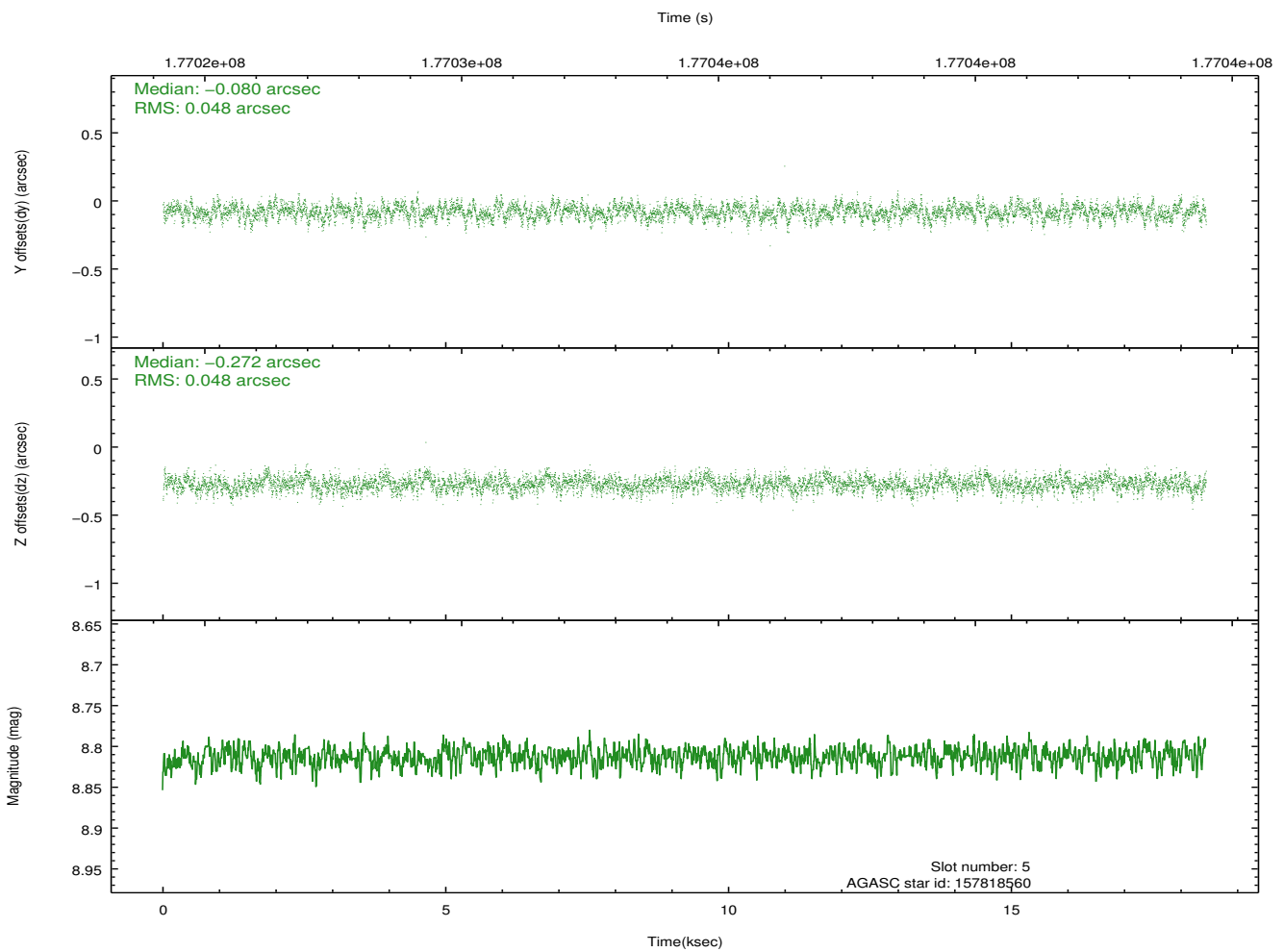
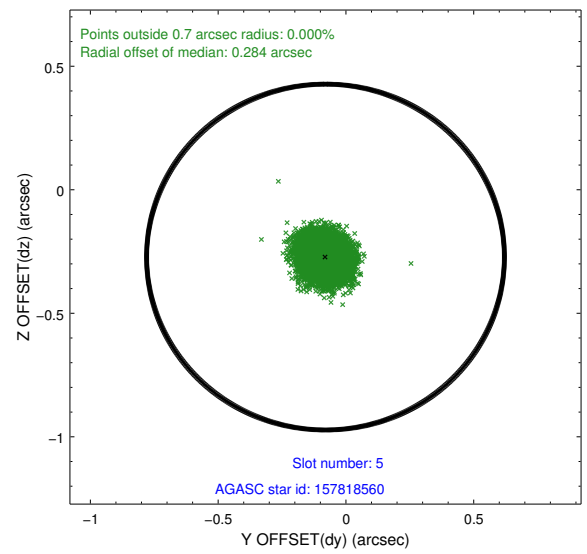
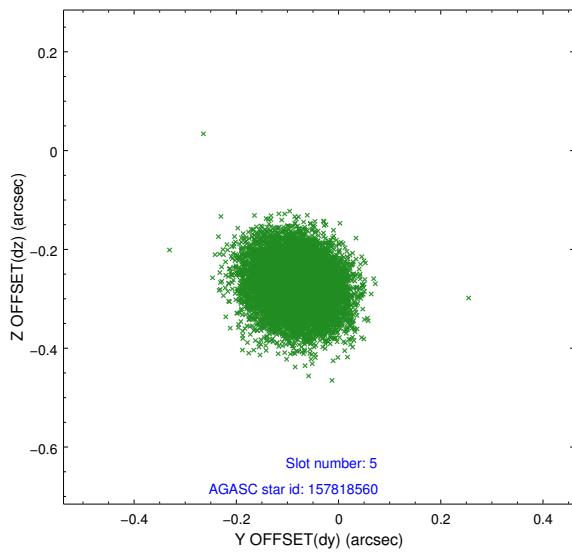
2.4.1 Slot 3



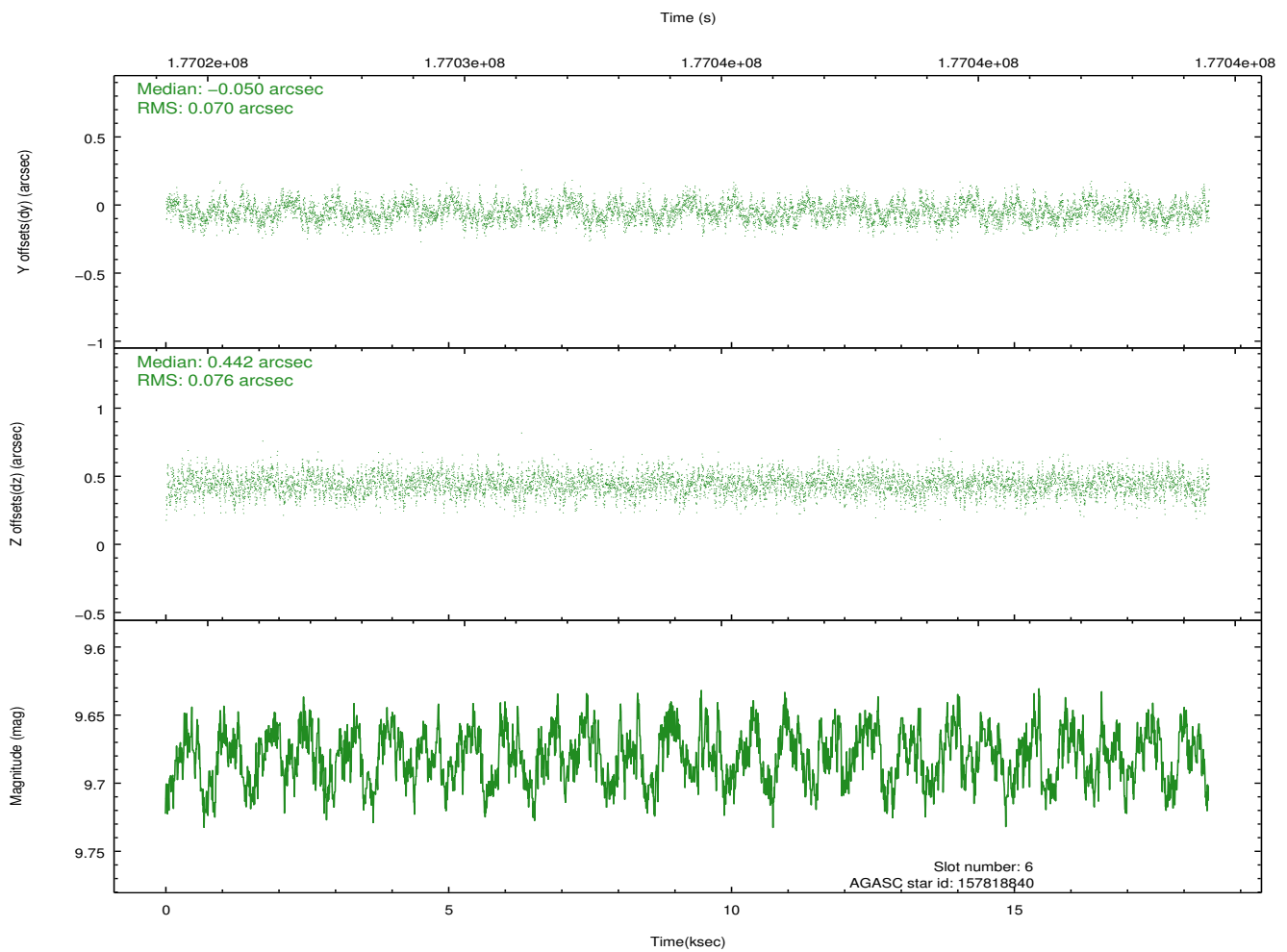
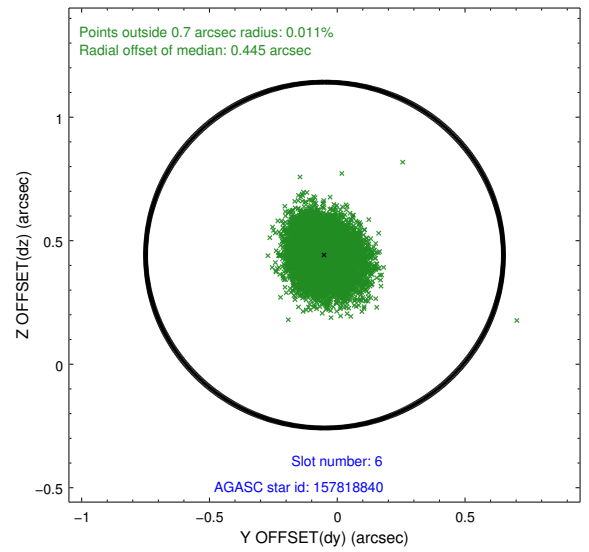
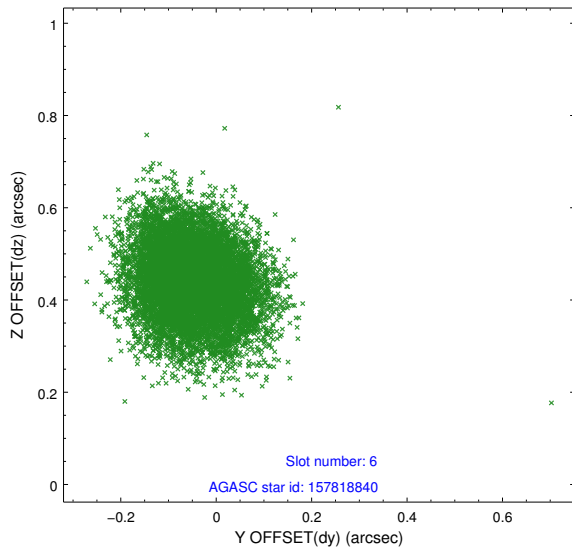
2.4.2 Slot 4



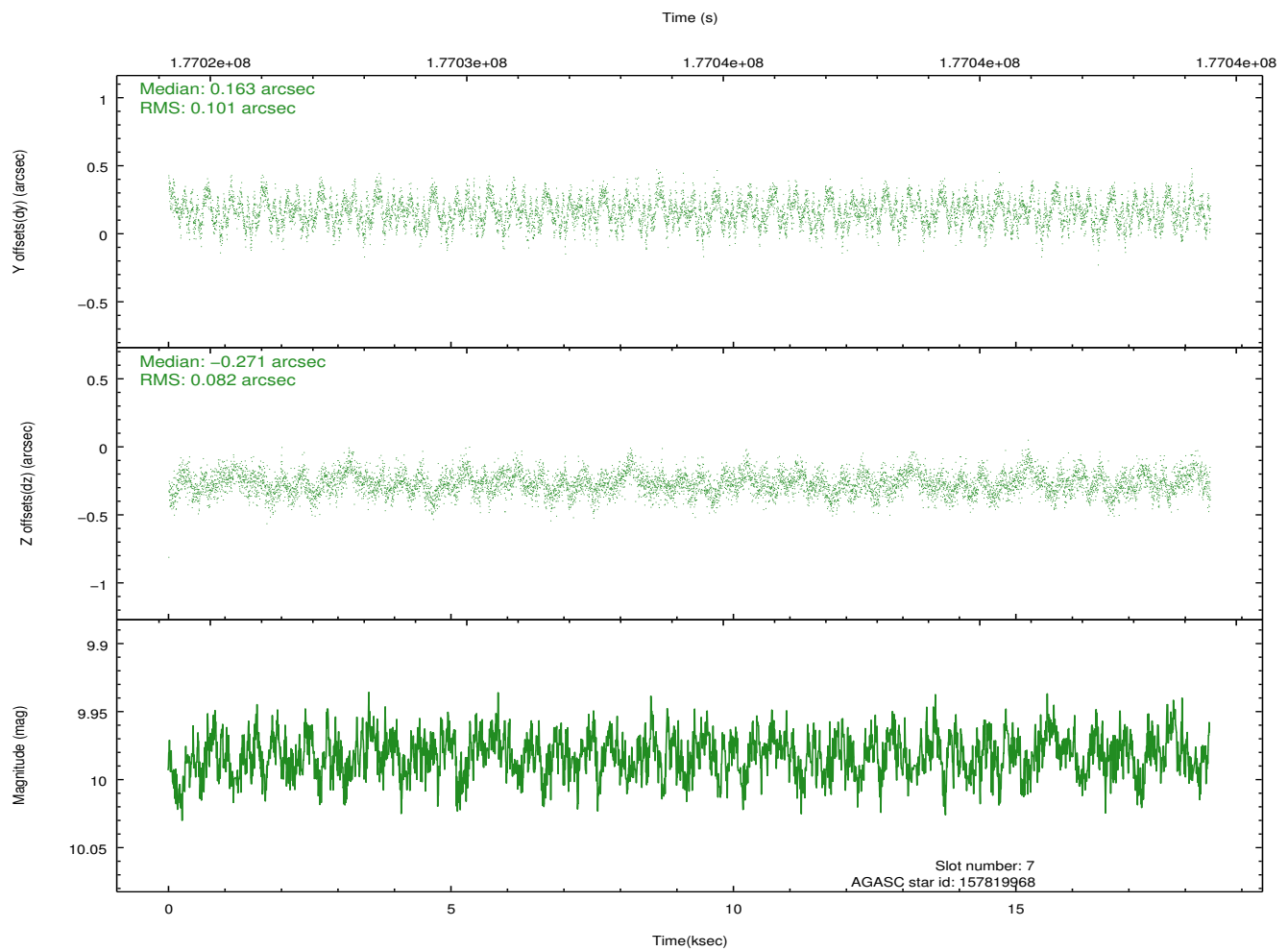
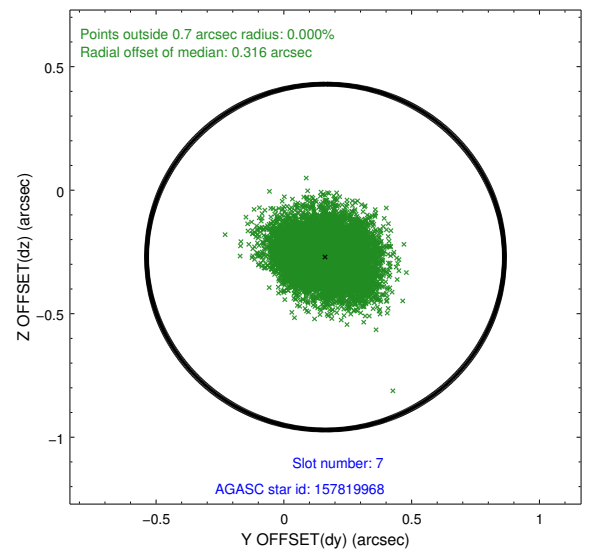
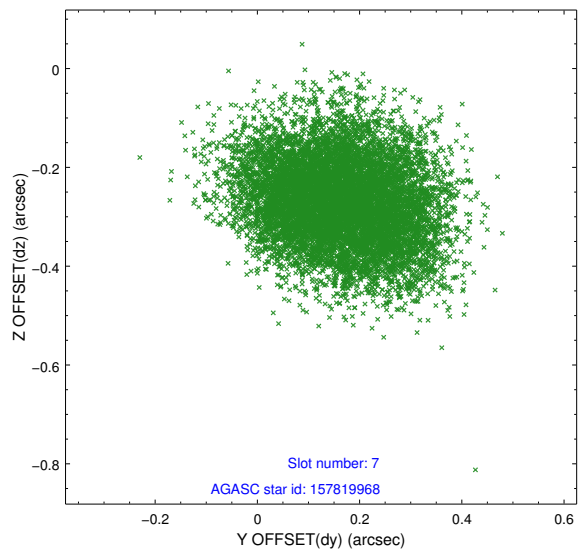
2.4.3 Slot 5



2.4.4 Slot 6

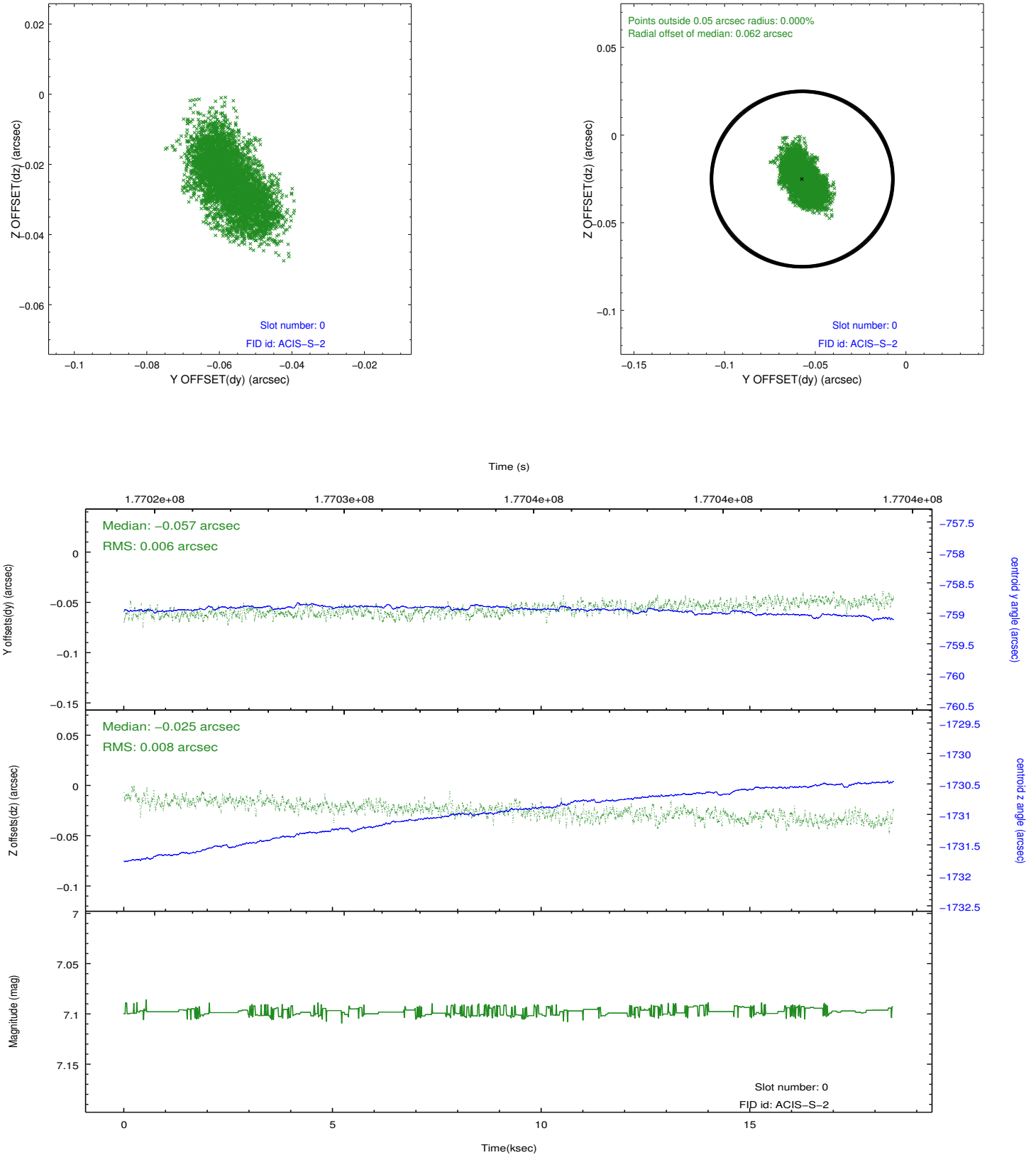


2.4.5 Slot 7

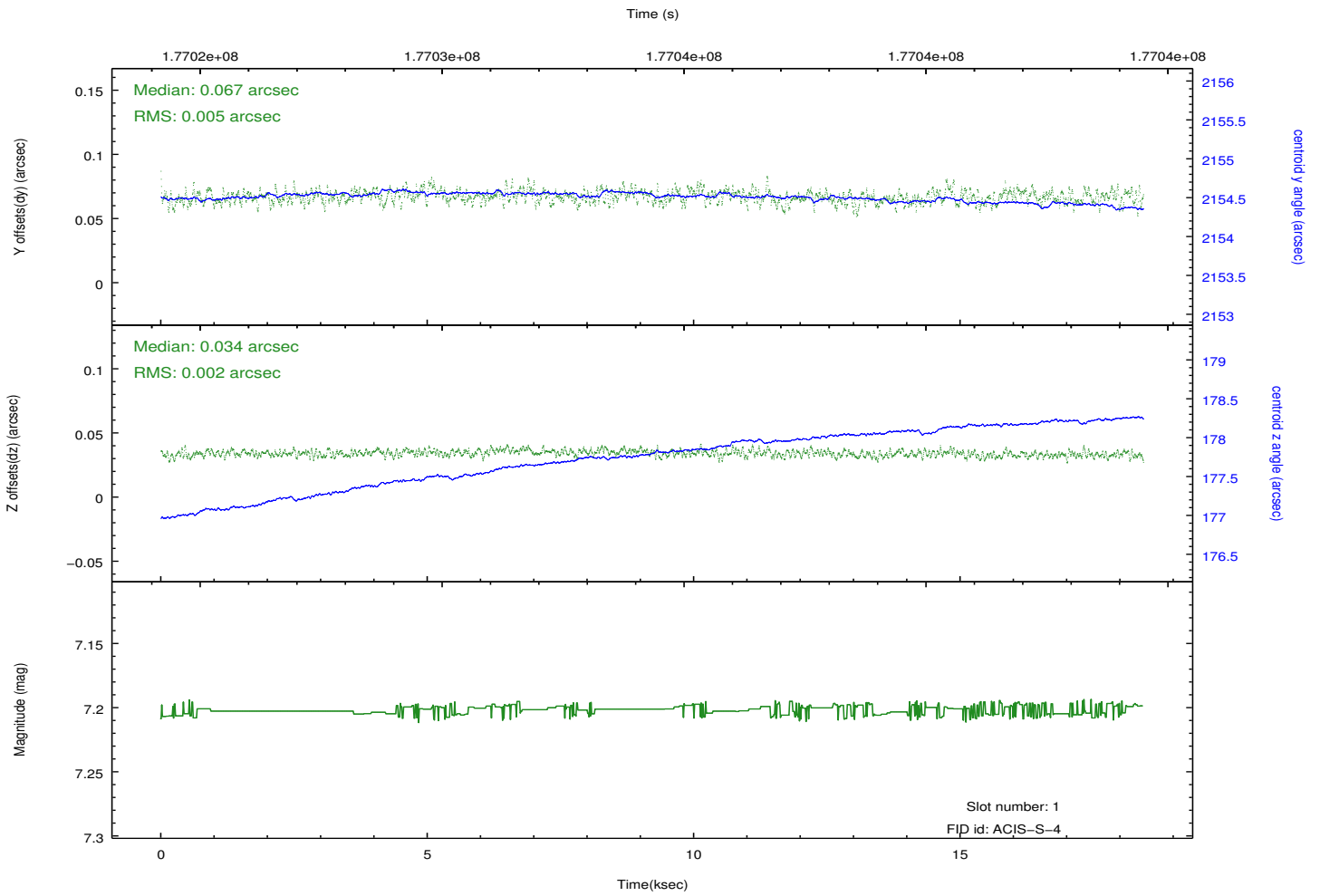
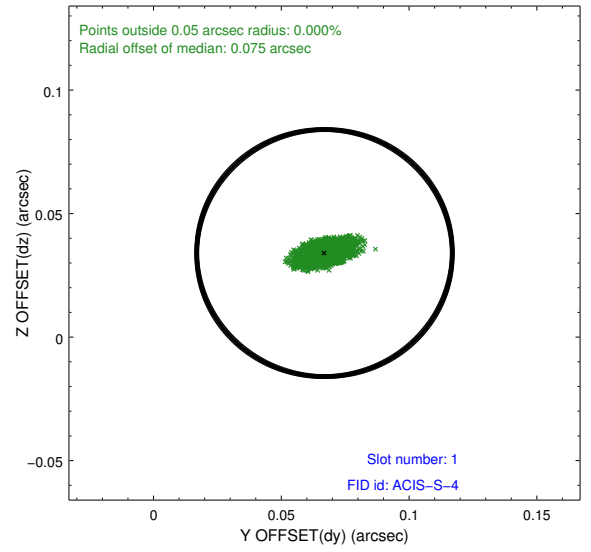
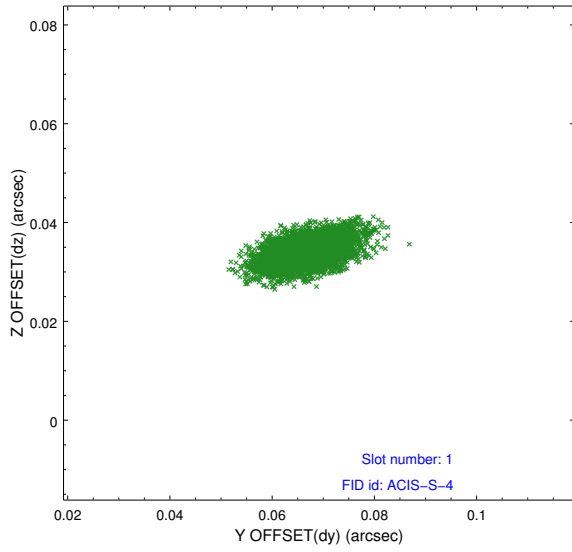


2.5 FID Slots

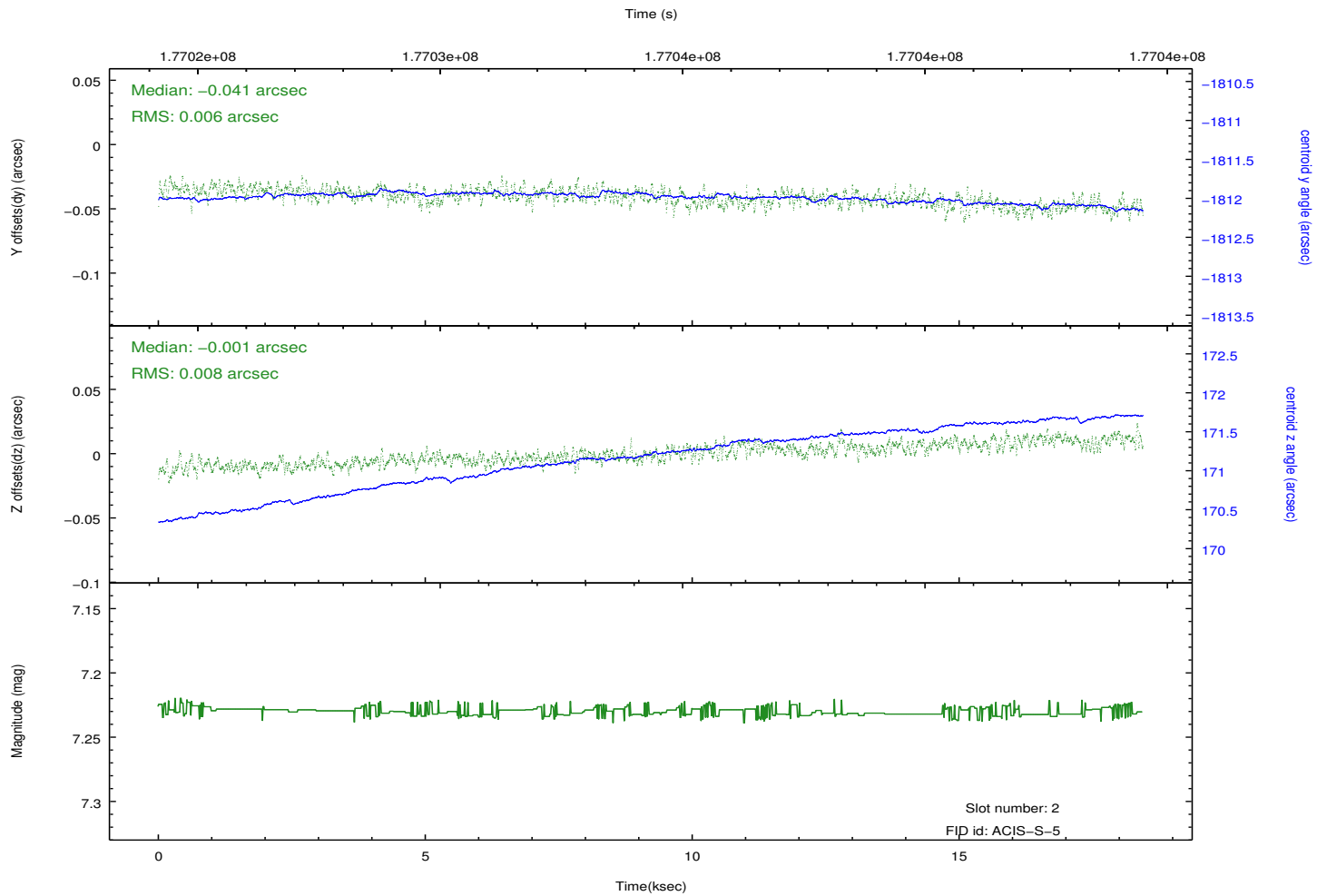
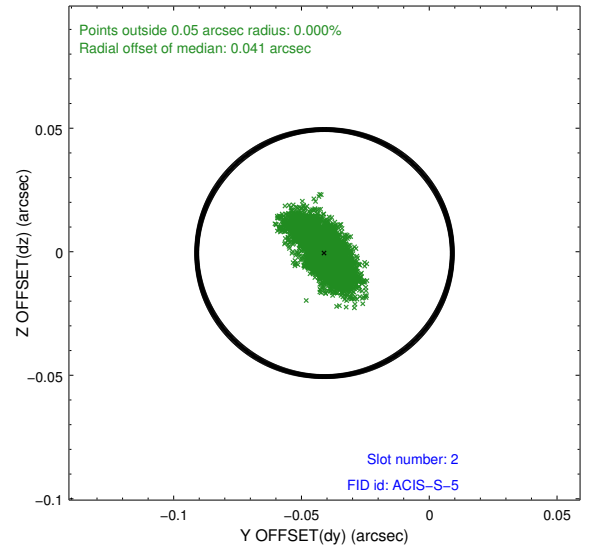
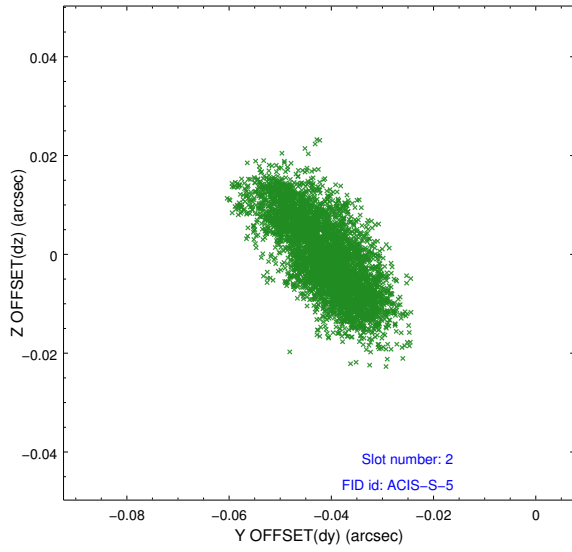
2.5.1 Slot 0



2.5.2 Slot 1



2.5.3 Slot 2



A Summary

A.1 Status

V&V Scientist	Jen Lauer
V&V Date (YYYY-MM-DD)	2012.11.29
V&V Edition	1
V&V Disposition and Status	OK
V&V Charge Time	18.435

A.2 Comments