

V&V Reference Report

L2 ASCDS Version : 8.4.5

Observation 4519 - L2 Version 4
Chandra X-Ray Center

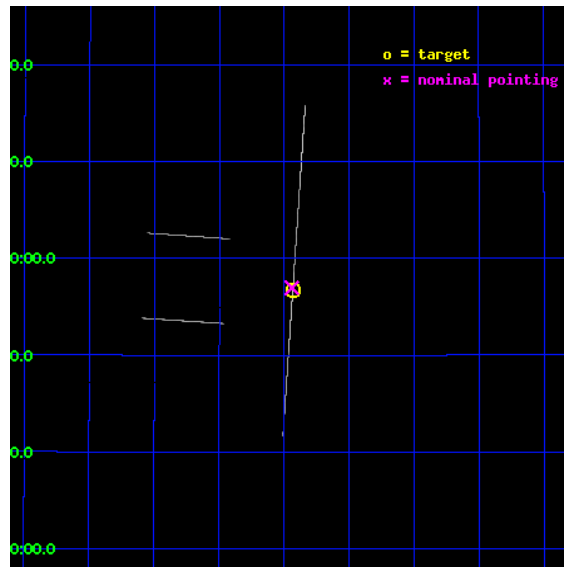
L2 Processing Date : Nov 14 2012

Contents

1	Front	2
2	OBI	3
2.1	OBI	3
2.1.1	Images	3
2.1.2	Parameters	4
2.1.3	Events	4
2.2	Compared Parameters	5
2.3	Aspect	6
2.4	Star Slots	9
2.4.1	Slot 3	9
2.4.2	Slot 4	10
2.4.3	Slot 5	11
2.4.4	Slot 6	12
2.4.5	Slot 7	13
2.5	FID Slots	14
2.5.1	Slot 0	14
2.5.2	Slot 1	15
2.5.3	Slot 2	16
A	Summary	17
A.1	Status	17
A.2	Comments	17

1 Front

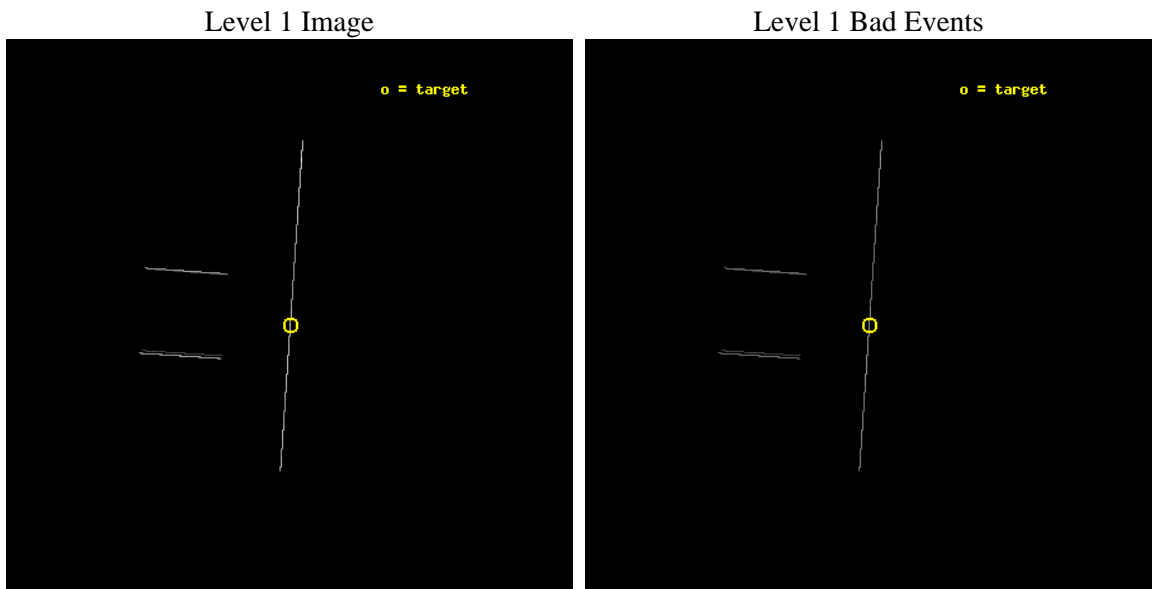
seq_num	300113	Sequence number
obs_id	4519	Observation id
title	Continued Monitoring of the Orbital Evolution of RX J1914.4+2456	P
observer	Dr. Tod Strohmayer	Principal investigator
object	RX J1914.4+2456	Source name
ra_targ	288.60875	Observer's specified target RA [deg]
dec_targ	24.945444	Observer's specified target Dec [deg]
ra_nom	288.61029898324	Nominal RA [deg]
dec_nom	24.949544940046	Nominal Dec [deg]
roll_nom	93.860021944252	Nominal Roll [deg]
revision	4	Processing version of data
ontime	15431.0	Sum of GTIs [s]
livetime	15370.72265625	Livetime [s]
ontime2	15431.0	Sum of GTIs [s]
ontime3	15431.0	Sum of GTIs [s]
ontime5	15431.0	Sum of GTIs [s]
ontime6	15431.0	Sum of GTIs [s]
ontime7	15431.0	Sum of GTIs [s]
ontime8	15431.0	Sum of GTIs [s]
l2events	189893	Number of level 2 events



2 OBI

2.1 OBI

2.1.1 Images



2.1.2 Parameters

obi_num	0	Obi number	sched_exp_time	15000.000000	[s] Scheduled observation exposure time
ascdsver	8.4.5	Processing system revision	ontime	15431.0	Sum of GTIs [s]
caldbver	4.5.2	 	ontime2	15431.0	Sum of GTIs [s]
date	2012-11-14T01:57:56	Date and time of file creation	ontime3	15431.0	Sum of GTIs [s]
revision	4	Processing version of data	ontime5	15431.0	Sum of GTIs [s]
			ontime6	15431.0	Sum of GTIs [s]
			ontime7	15431.0	Sum of GTIs [s]
			ontime8	15431.0	Sum of GTIs [s]
			l1events	293660	Number of level 1 events

2.1.3 Events

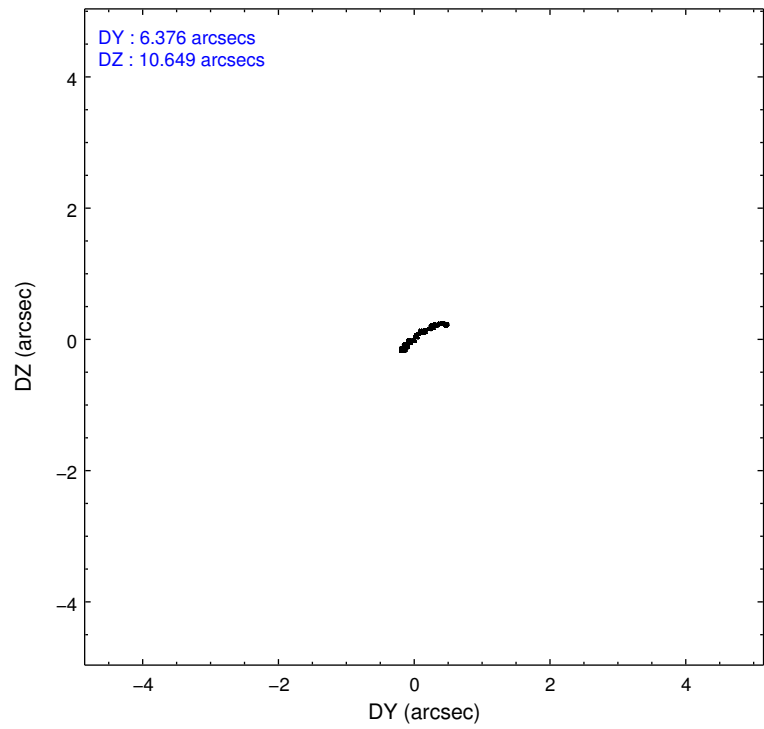
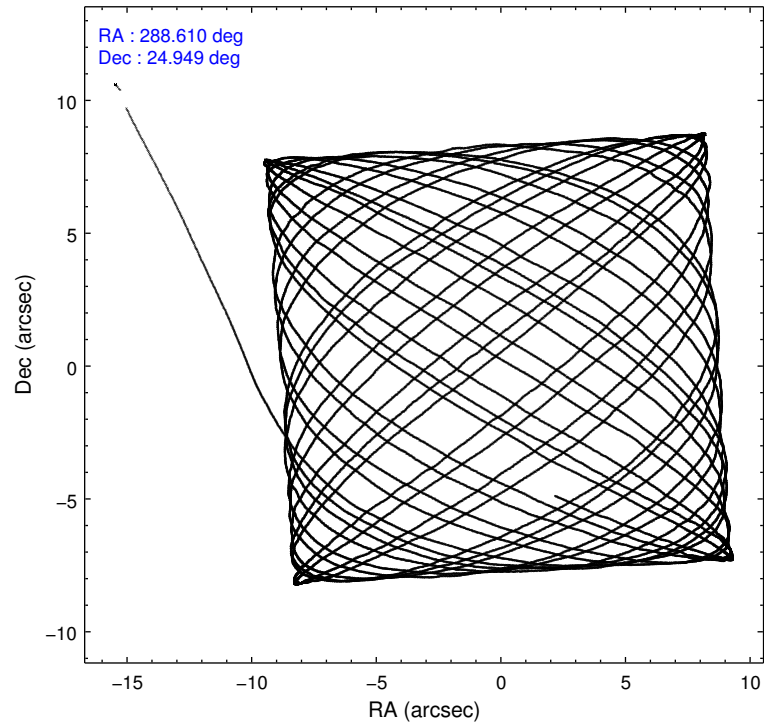
	ccd 2	ccd 3	ccd 5	ccd 6	ccd 7	ccd 8
level 1 events	21259	22333	106956	22535	77008	43569
rejected events	4536	4729	12230	4994	13105	7829
rejected %	21%	21%	11%	22%	17%	17%

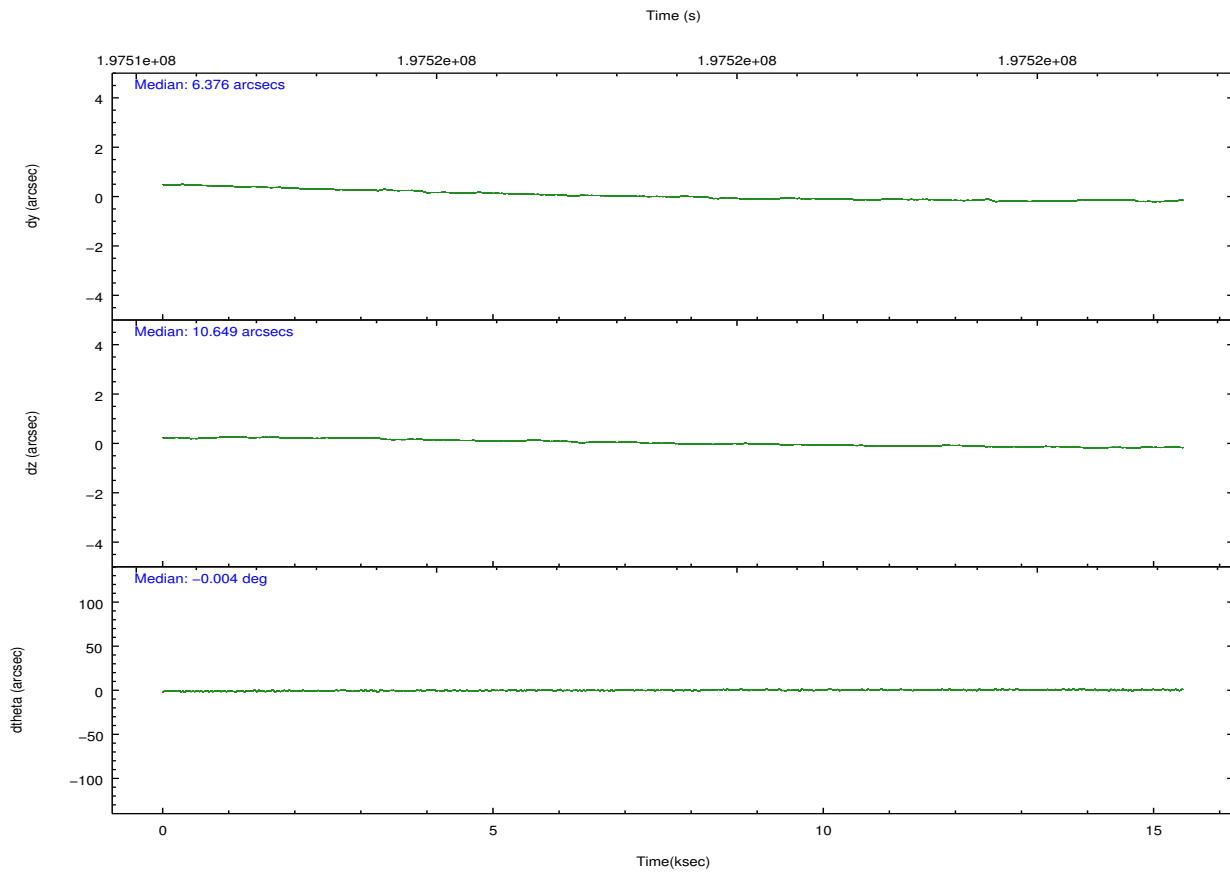
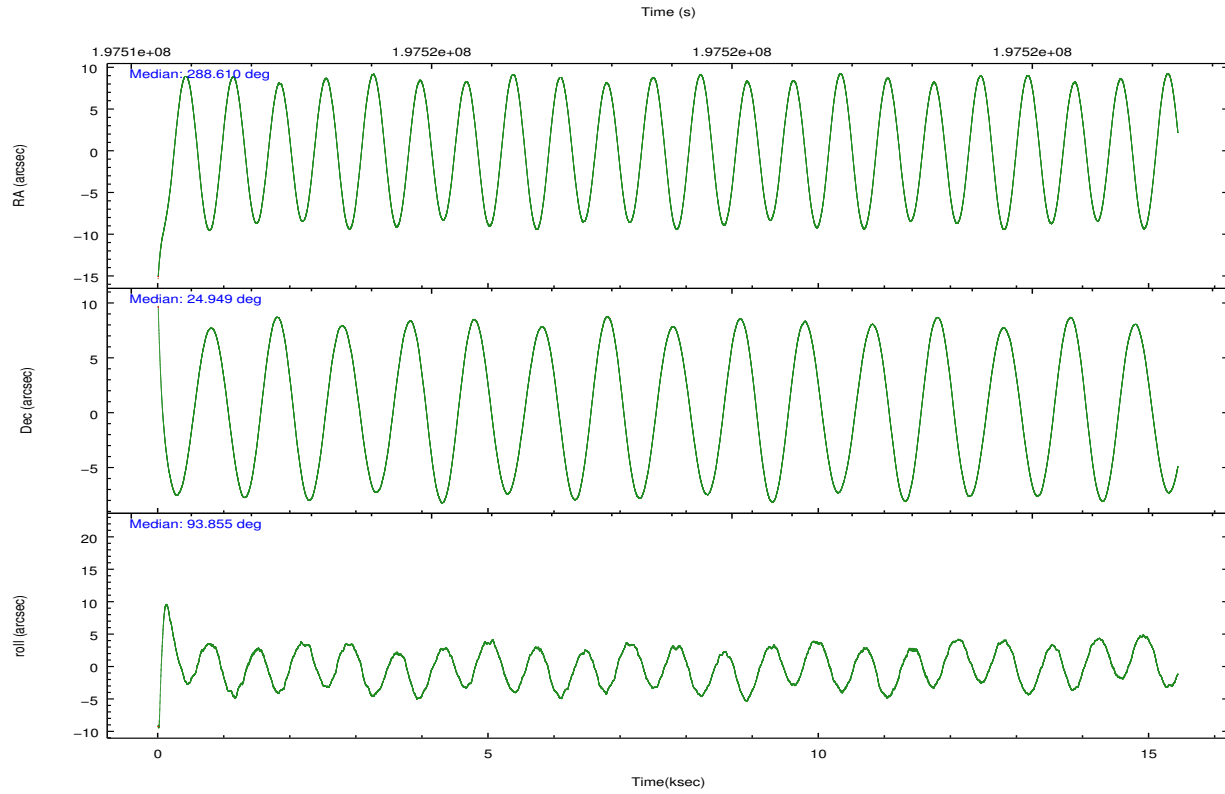
	ccd 2	ccd 3	ccd 5	ccd 6	ccd 7	ccd 8
grade 0 events	2128	2042	24759	1919	6100	6549
	10%	9%	23%	8%	7%	15%
grade 1 events	75	66	86	75	120	118
	0%	0%	0%	0%	0%	0%
grade 2 events	6759	7127	25555	7076	17362	12047
	31%	31%	23%	31%	22%	27%
grade 3 events	2248	2562	1631	2286	3267	4260
	10%	11%	1%	10%	4%	9%
grade 4 events	2247	2192	1543	2145	3126	4150
	10%	9%	1%	9%	4%	9%
grade 5 events	3791	3978	8295	4260	10588	6071
	17%	17%	7%	18%	13%	13%
grade 6 events	4011	4366	45087	4774	36445	10374
	18%	19%	42%	21%	47%	23%
grade 7 events	0	0	0	0	0	0
	0%	0%	0%	0%	0%	0%

2.2 Compared Parameters

Parameter	Planned	Actual	Parameter	Planned	Actual
Instrument	ACIS	ACIS	Obspar format version number	7	7
Detector	ACIS-235678	ACIS-235678	Obspar file type	PREDICTED	ACTUAL
Grating	NONE	NONE	Obspar update status	NONE	UPDATED
Data mode	CC33_GRADED	CC33_GRADED	Number of optional ACIS chips dropped	0	0
Observation mode	POINTING	POINTING	On-chip summing requested	N	N
[deg] Pointing RA	288.627366	288.6102989832444	Subarray requested	NONE	NONE
[deg] Pointing Dec	24.927166	24.94954494004579	Alternating exposures requested	N	N
[deg] Pointing Roll	93.696216	93.8600219442518	[s] Primary exposure time	0.000000	0
[mm] SIM focus pos	-0.684267	-0.6828225247311905			
[mm] SIM defocus	0	0.001444936568705701			
[mm] SIM translation stage pos	-190.132523	-190.1400660498719			
[mm] SIM translation stage offset	0	0.00754346686406393			
[s] Observation start time (MET)	197511661.184000	197510572.86957			
Observation start date	2004-04-05T00:19:57	2004-04-05T00:02:52			
[s] Observation end time (MET)	197526661.184000	197527772.37032			
Observation end date	2004-04-05T04:29:57	2004-04-05T04:49:32			
Read mode	CONTINUOUS	CONTINUOUS			

2.3 Aspect



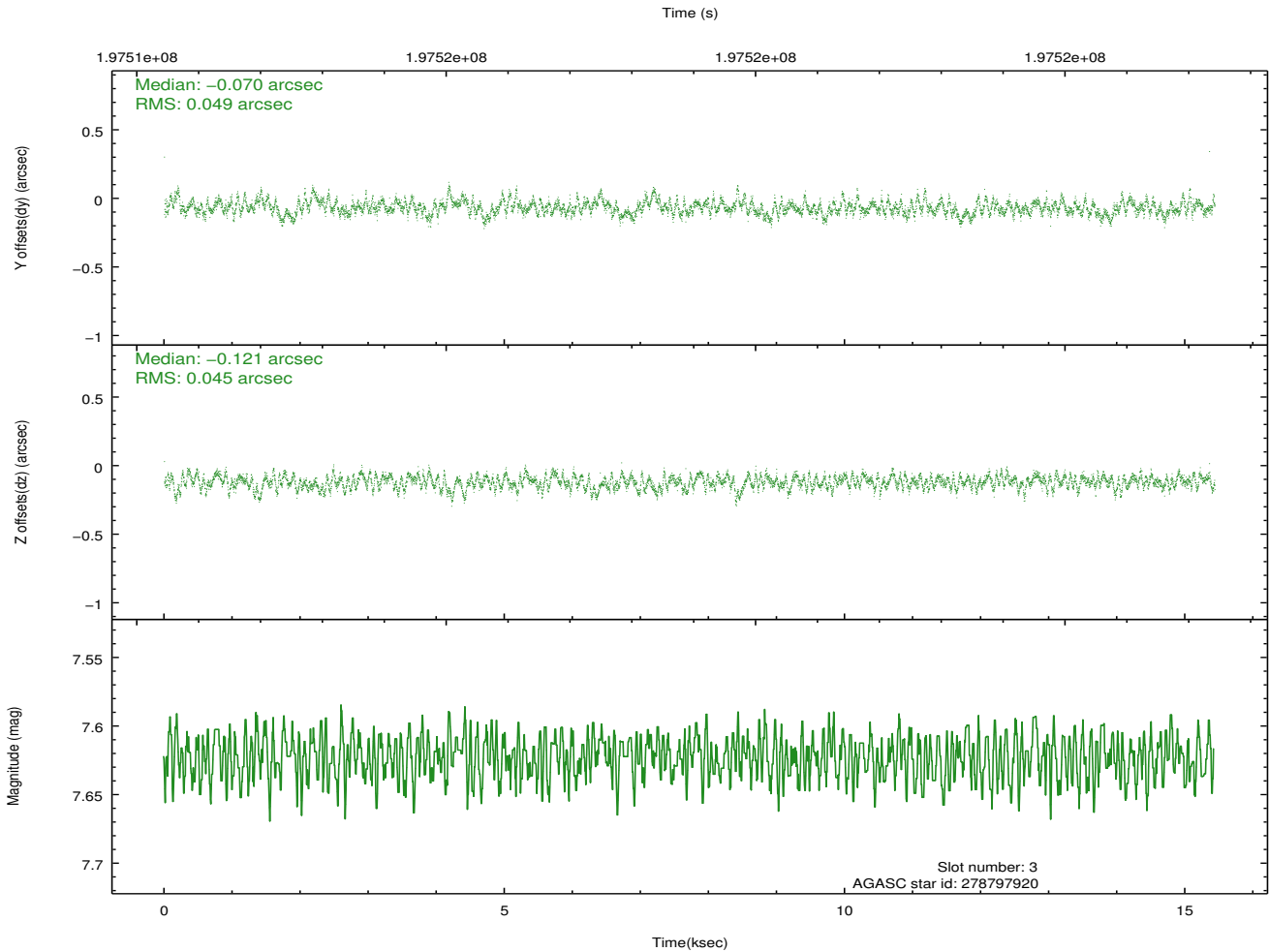
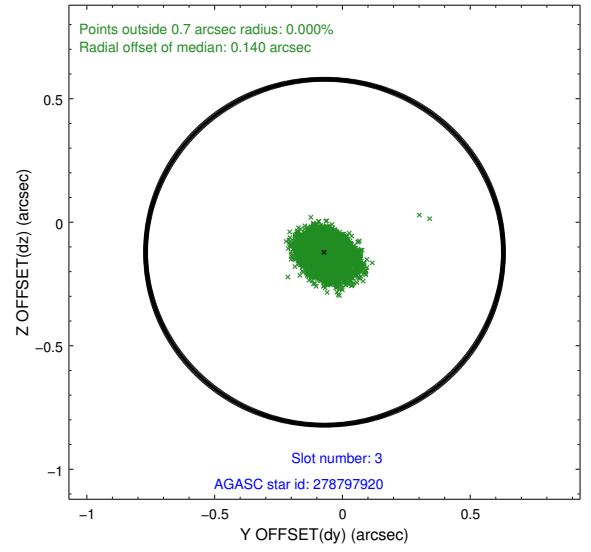
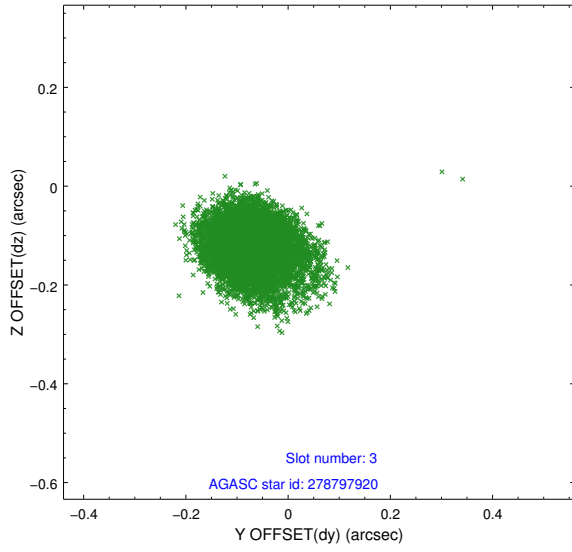


Slot Statistics

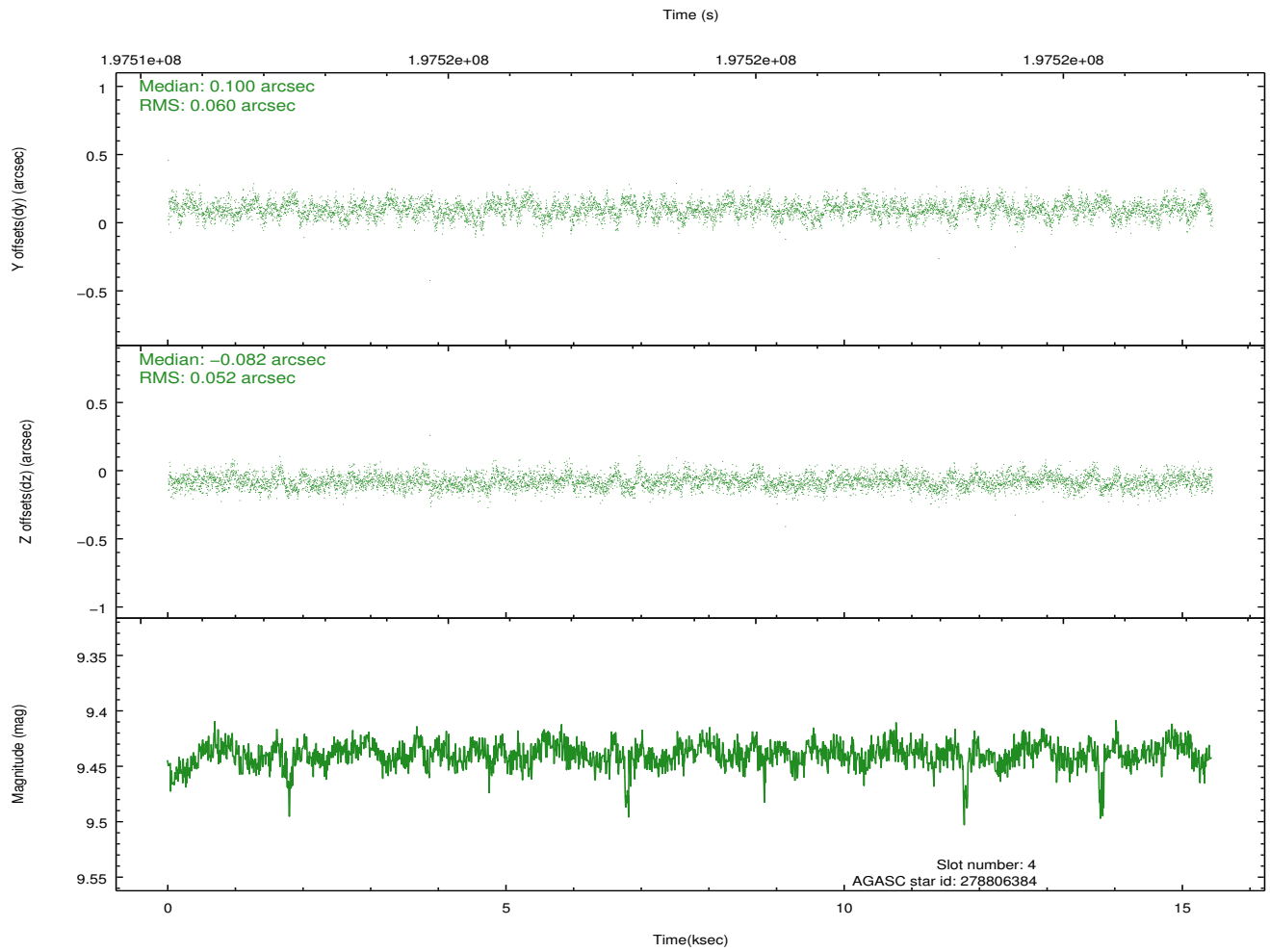
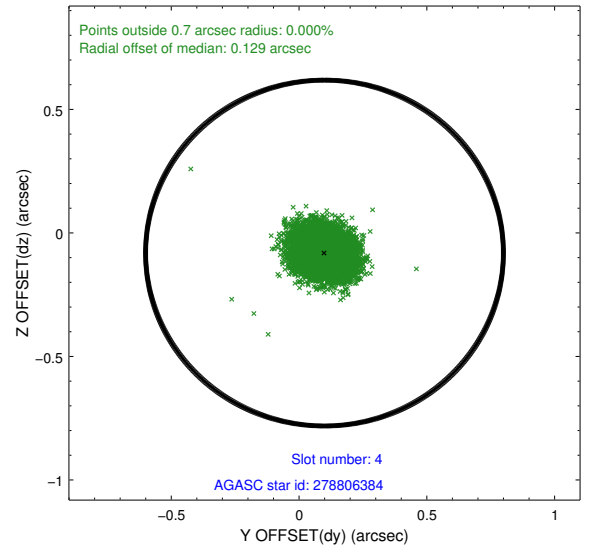
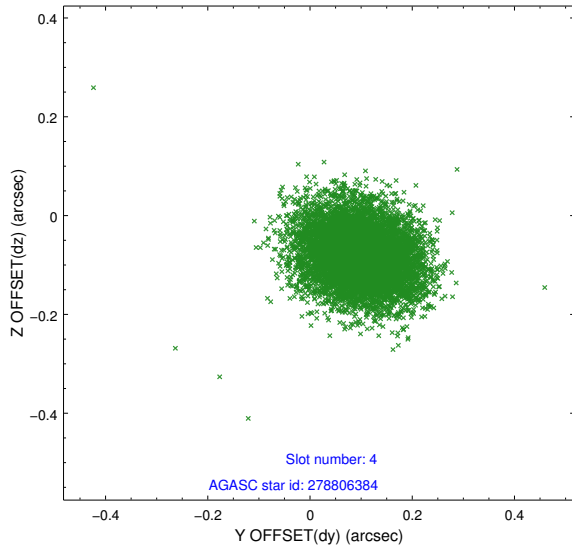
slot	status	id	mag	n_pts	med_dy	med_dz	dr1	dr2	ra	dec	mean_y	mean_z
0	FID	ACIS-S-2	7.09	3765	-0.065	-0.050	0.007	0.013	0.000000	0.000000	-759.21	-1731.99
1	FID	ACIS-S-4	7.20	3766	0.059	0.029	0.009	0.014	0.000000	0.000000	2154.05	176.29
2	FID	ACIS-S-6	7.34	3765	-0.021	0.028	0.010	0.016	0.000000	0.000000	403.17	814.00
3	GUIDE	278797920	7.62	7529	-0.070	-0.121	0.070	0.115	288.580174	25.013203	319.41	133.80
4	GUIDE	278806384	9.44	7524	0.100	-0.082	0.084	0.138	288.649975	24.433815	-1776.55	40.57
5	GUIDE	278954448	7.73	7531	-0.002	0.082	0.057	0.090	289.033961	24.779147	-615.85	-1291.32
6	GUIDE	278797248	8.59	7528	-0.061	-0.052	0.071	0.110	288.405544	25.027631	408.41	698.76
7	GUIDE	278953272	8.35	7530	0.034	0.174	0.059	0.099	289.216166	24.729034	-831.15	-1875.10

2.4 Star Slots

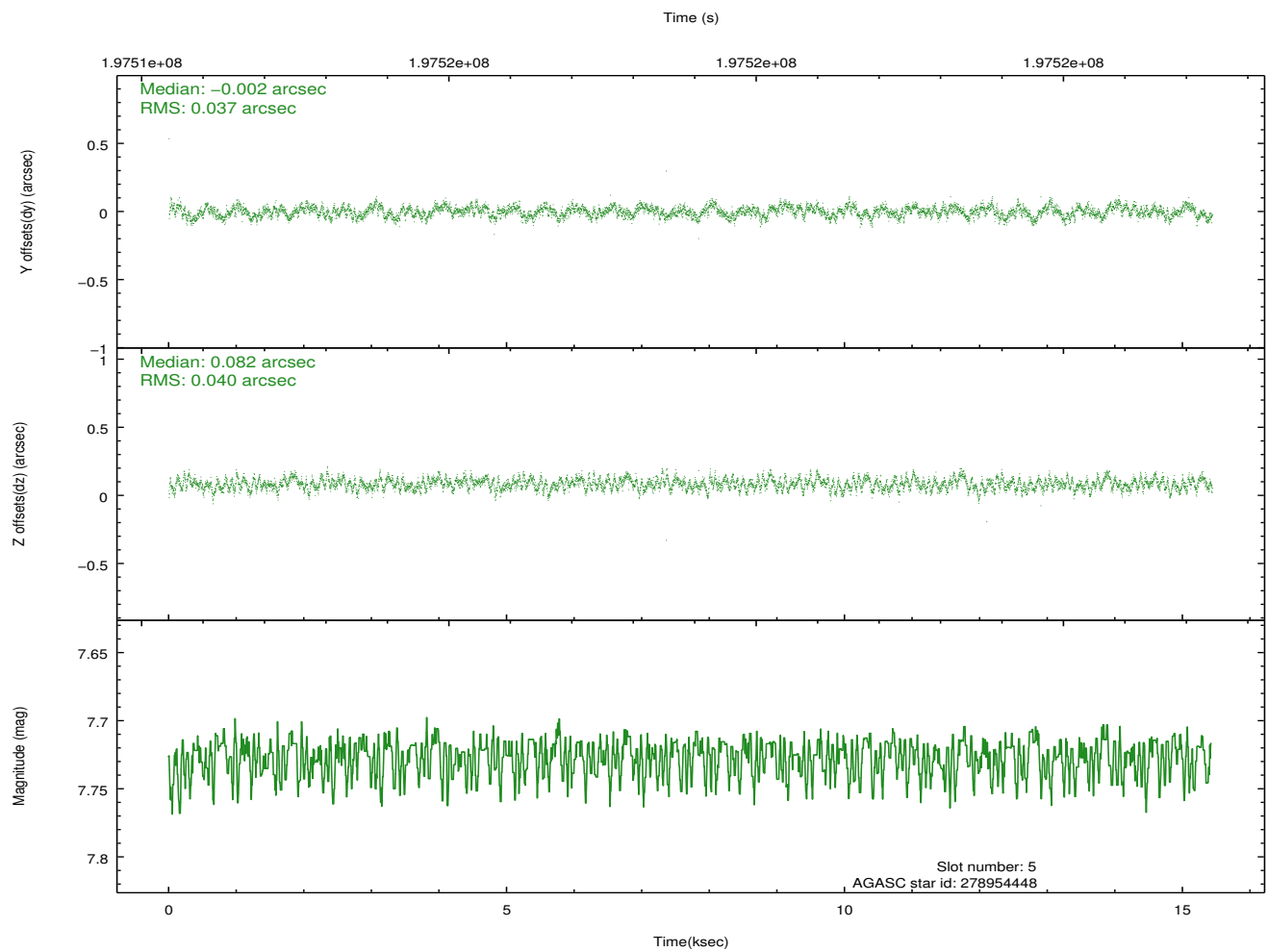
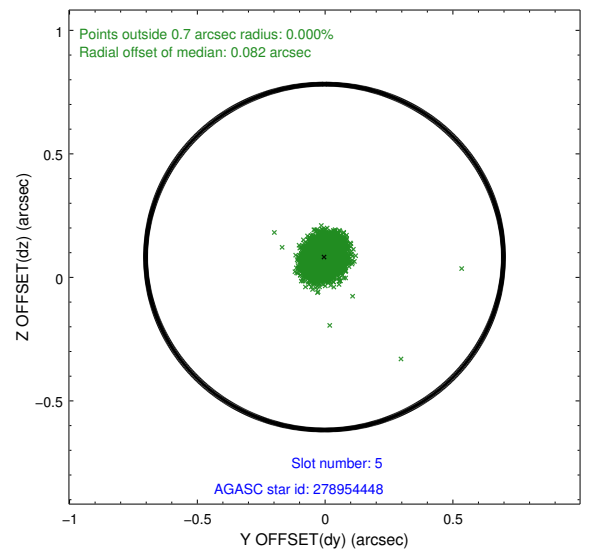
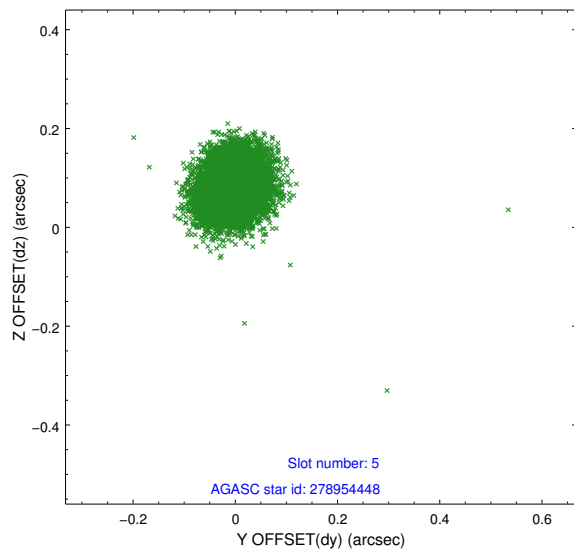
2.4.1 Slot 3



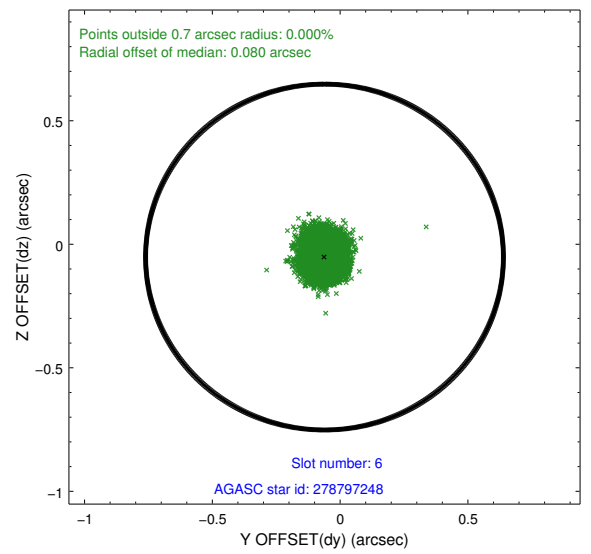
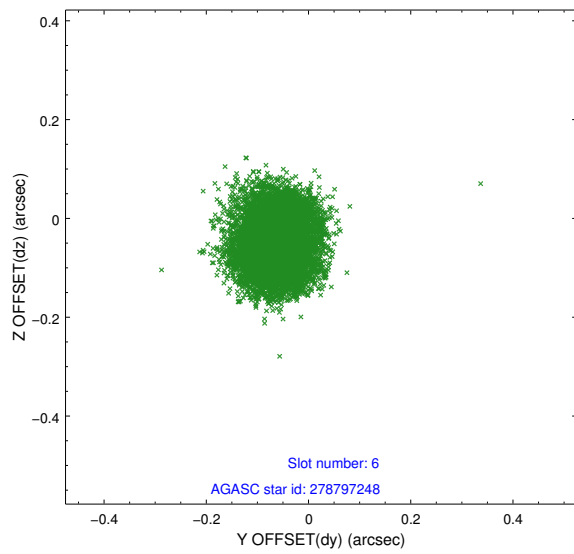
2.4.2 Slot 4



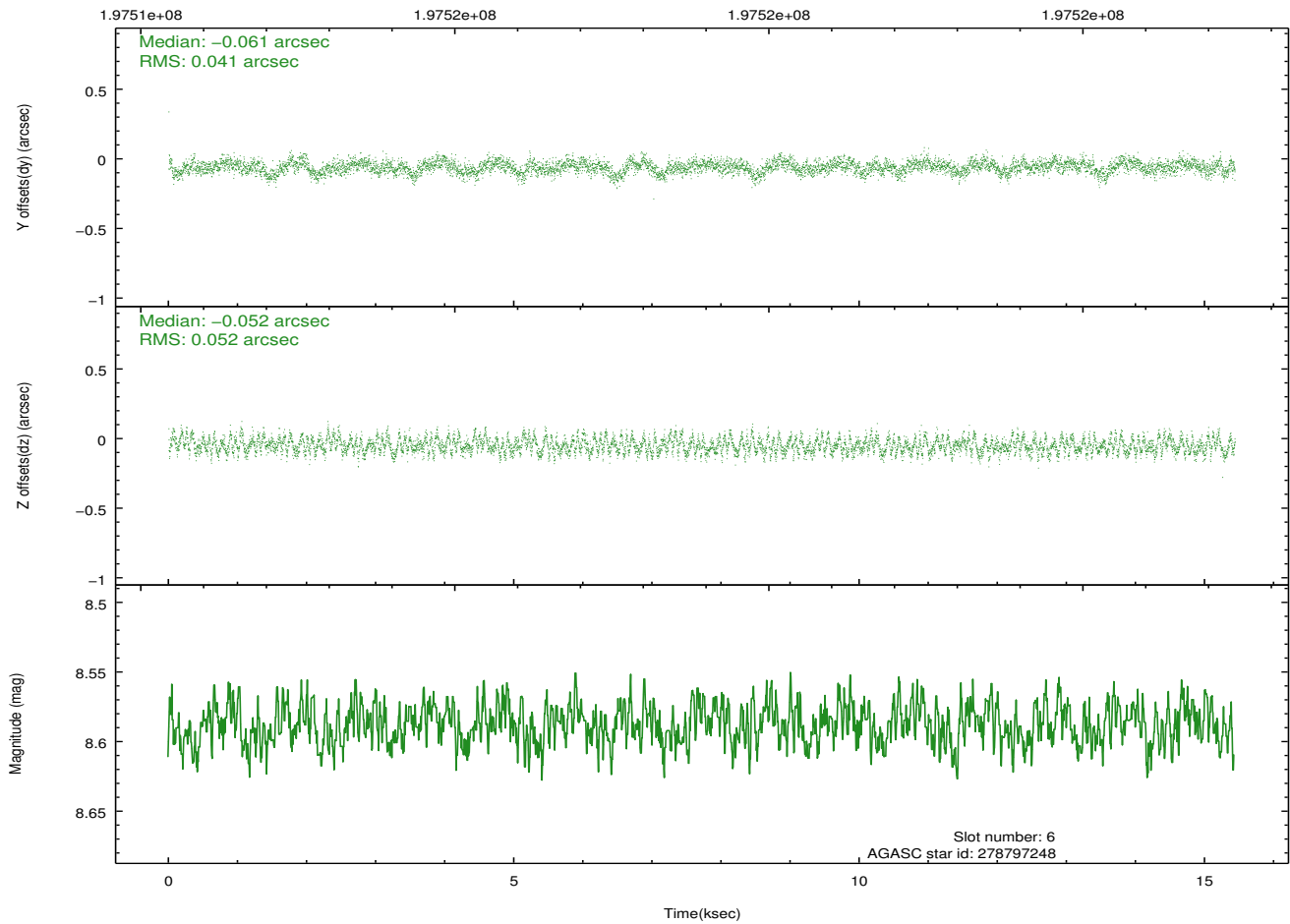
2.4.3 Slot 5



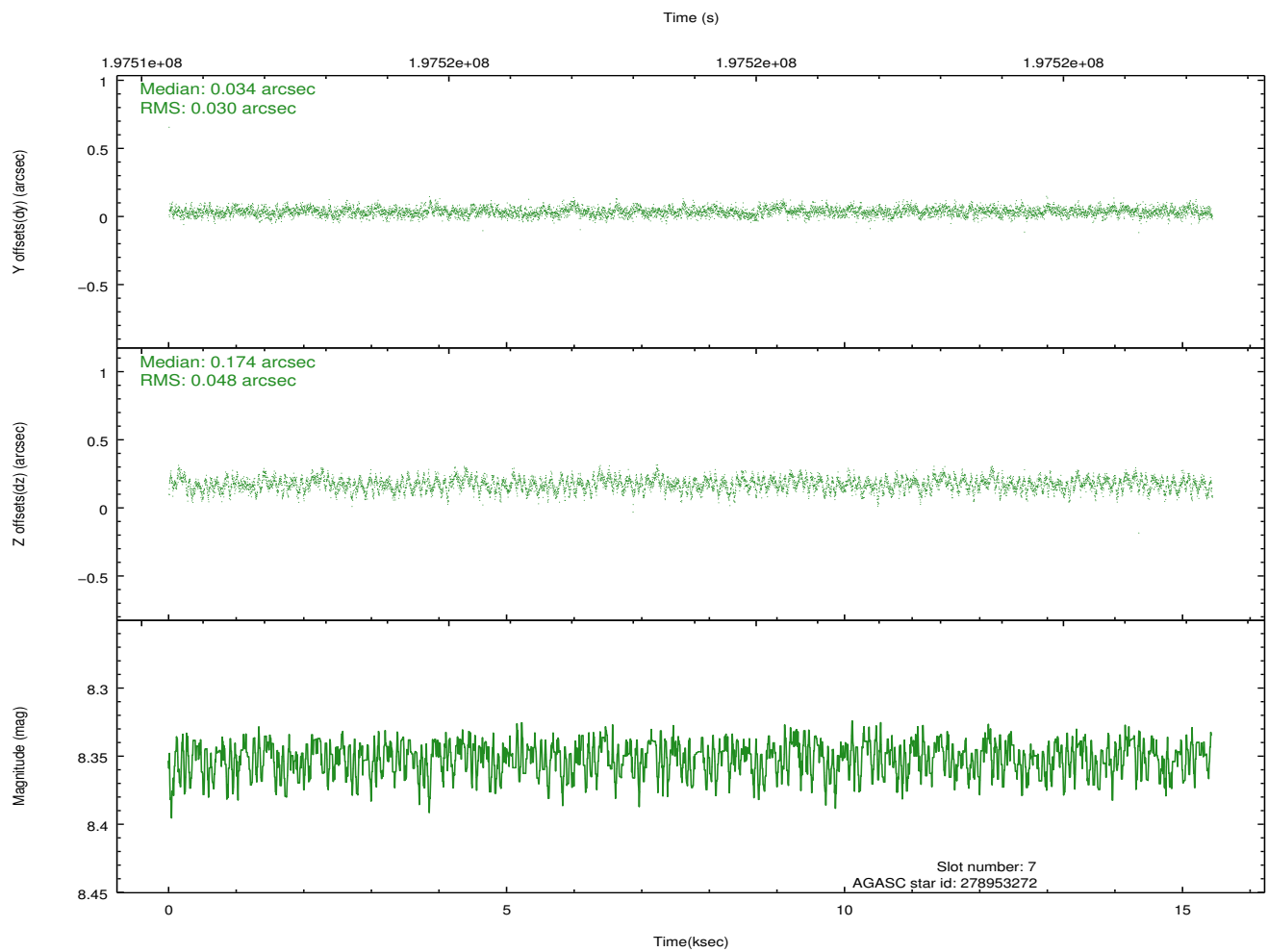
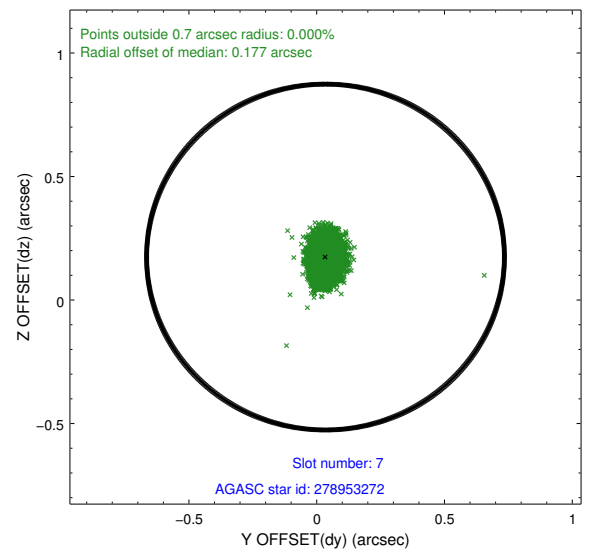
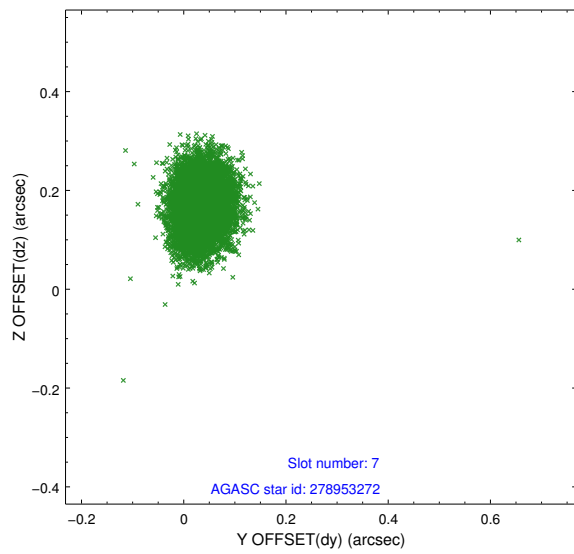
2.4.4 Slot 6



Time (s)

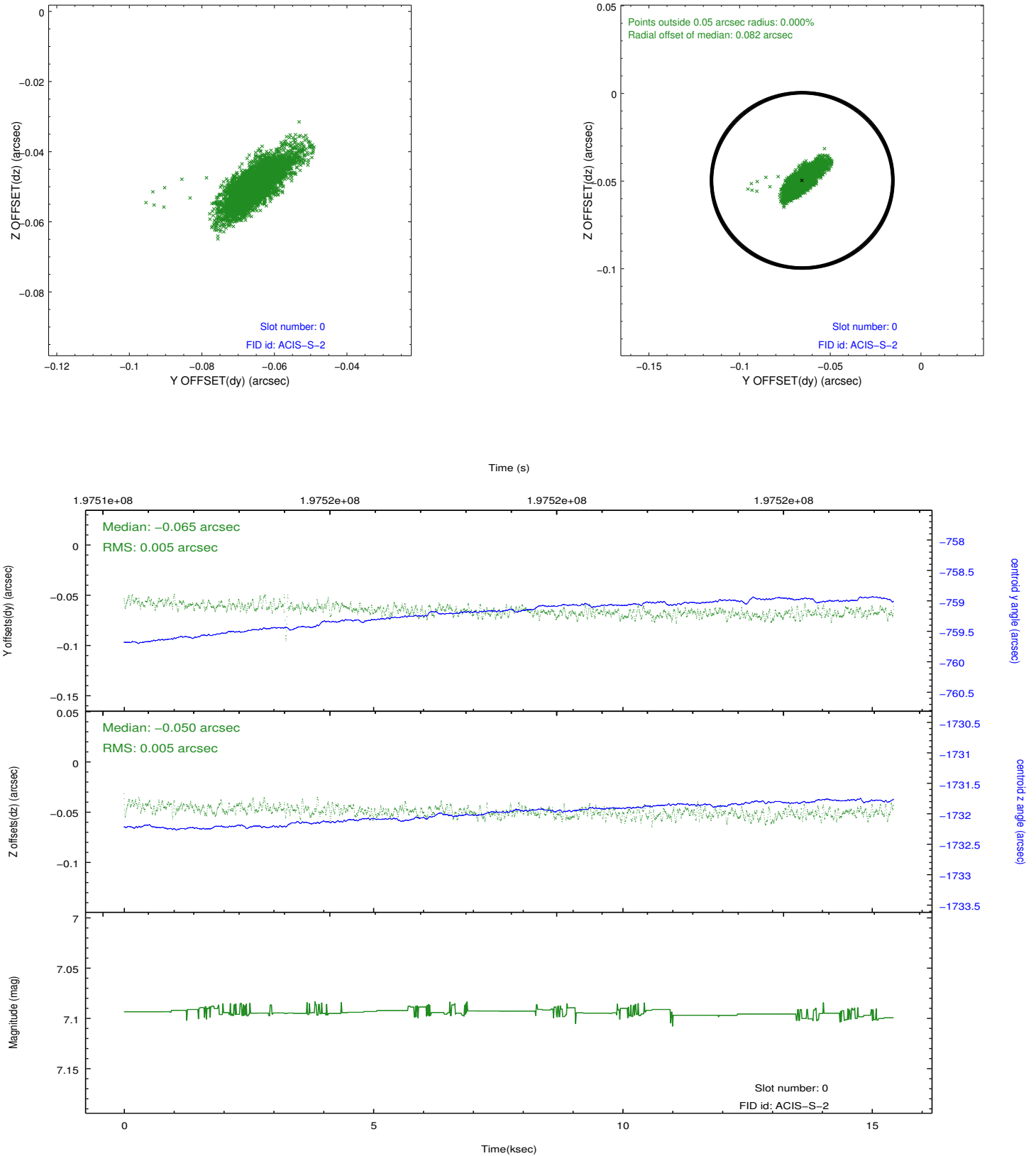


2.4.5 Slot 7

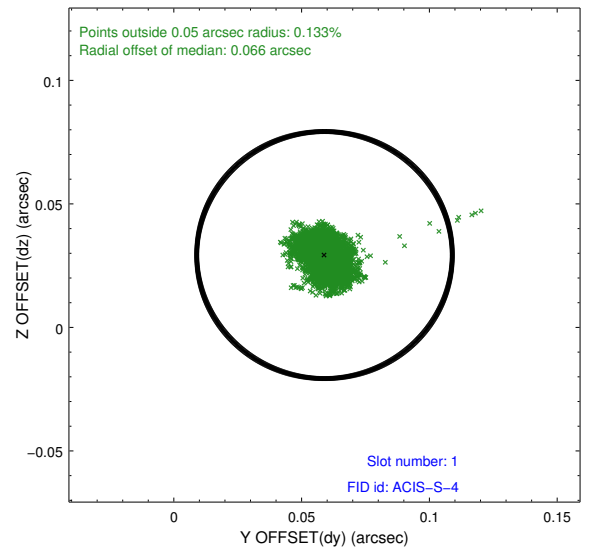
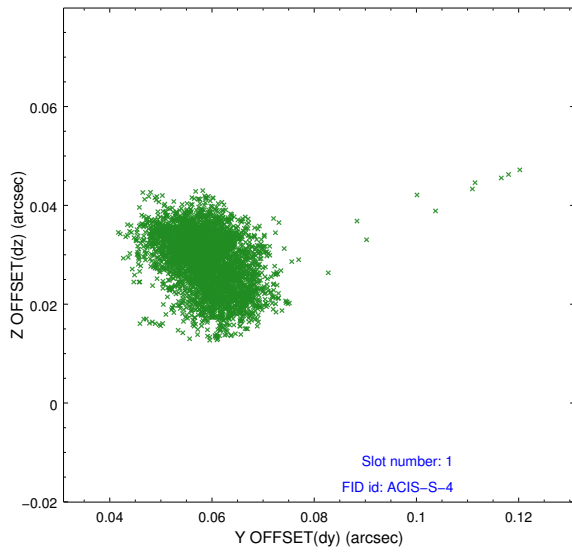


2.5 FID Slots

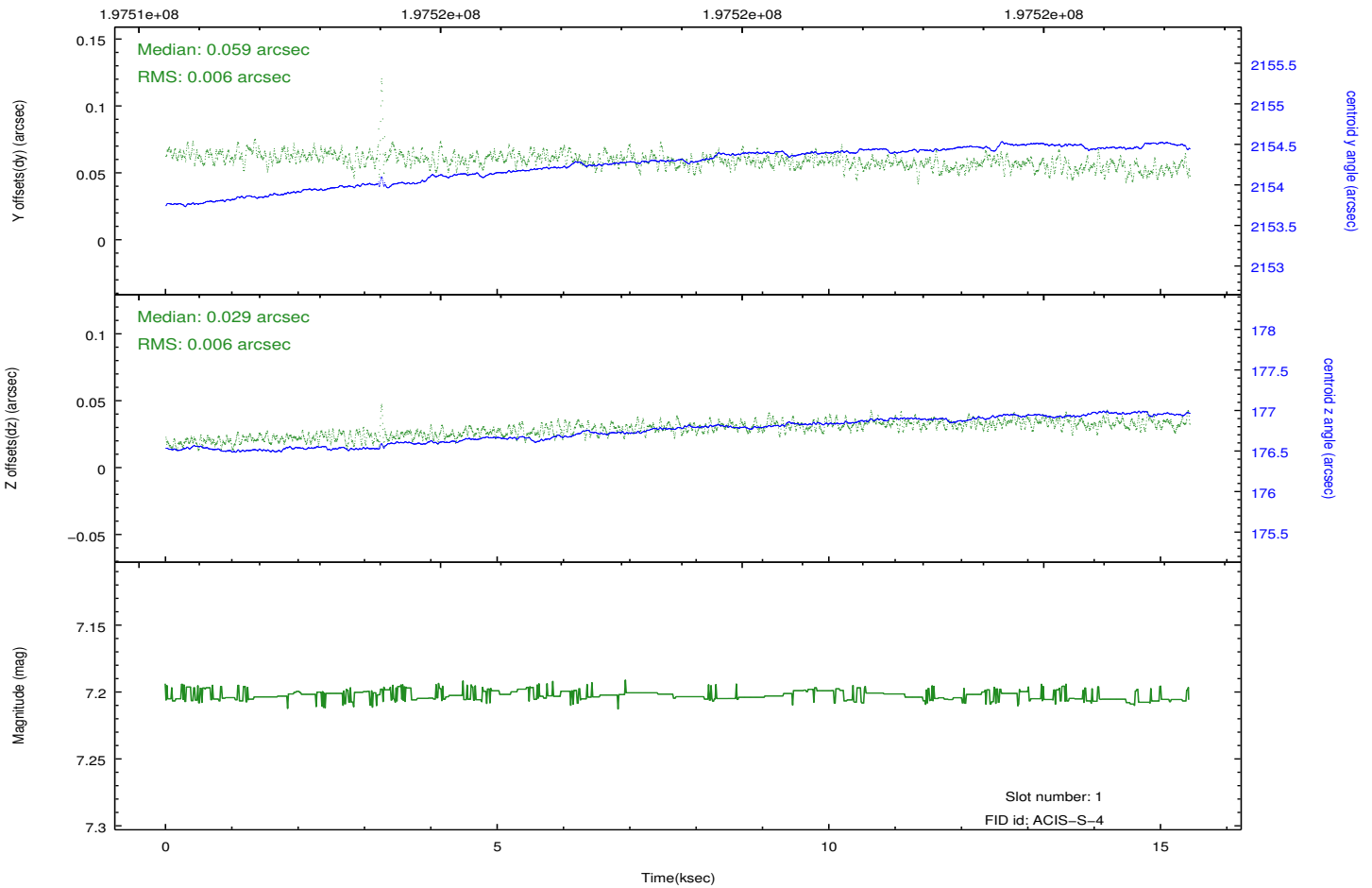
2.5.1 Slot 0



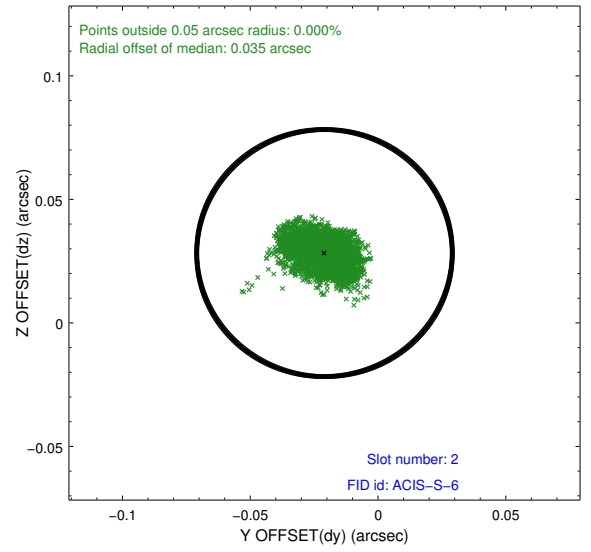
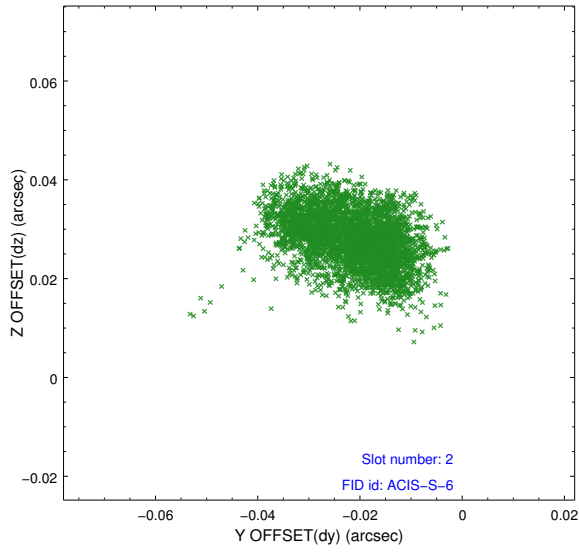
2.5.2 Slot 1



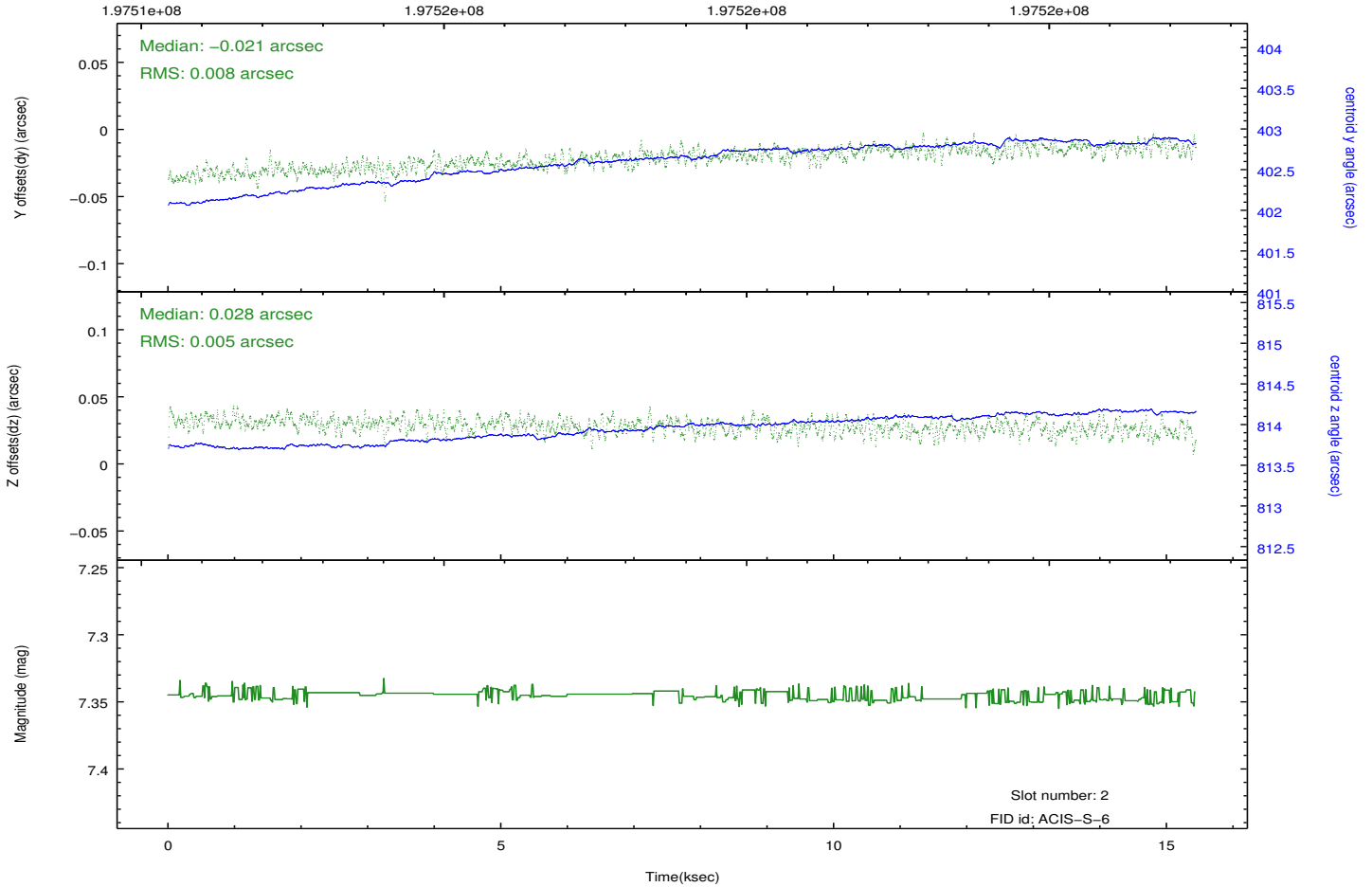
Time (s)



2.5.3 Slot 2



Time (s)



A Summary

A.1 Status

V&V Scientist	Joy Nichols
V&V Date (YYYY-MM-DD)	2012.12.12
V&V Edition	1
V&V Disposition and Status	OK
V&V Charge Time	15.434

A.2 Comments