

# V&V Reference Report

## L2 ASCDS Version : 8.5

Observation 4629 - L2 Version 3  
Chandra X-Ray Center

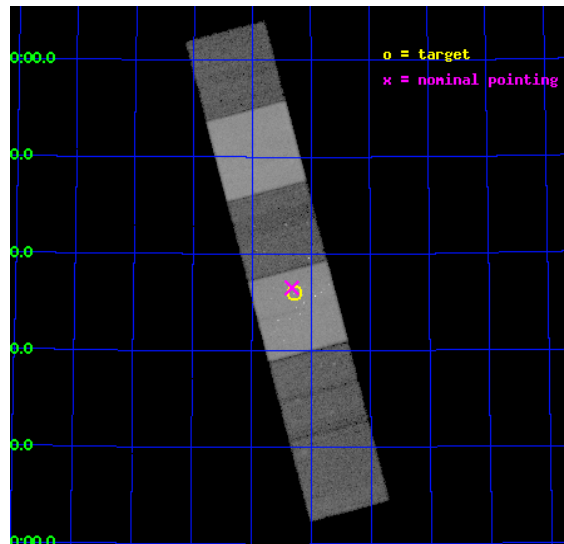
L2 Processing Date : Dec 9 2012

## Contents

<b>1</b>	<b>Front</b>	<b>2</b>
<b>2</b>	<b>OBI</b>	<b>3</b>
2.1	OBI . . . . .	3
2.1.1	Images . . . . .	3
2.1.2	Bias . . . . .	3
2.1.3	Parameters . . . . .	4
2.1.4	Events . . . . .	4
2.2	Compared Parameters . . . . .	5
2.3	Aspect . . . . .	6
2.4	Star Slots . . . . .	9
2.4.1	Slot 3 . . . . .	9
2.4.2	Slot 4 . . . . .	10
2.4.3	Slot 5 . . . . .	11
2.4.4	Slot 6 . . . . .	12
2.4.5	Slot 7 . . . . .	13
2.5	FID Slots . . . . .	14
2.5.1	Slot 0 . . . . .	14
2.5.2	Slot 1 . . . . .	15
2.5.3	Slot 2 . . . . .	16
<b>A</b>	<b>Summary</b>	<b>17</b>
A.1	Status . . . . .	17
A.2	Comments . . . . .	17

# 1 Front

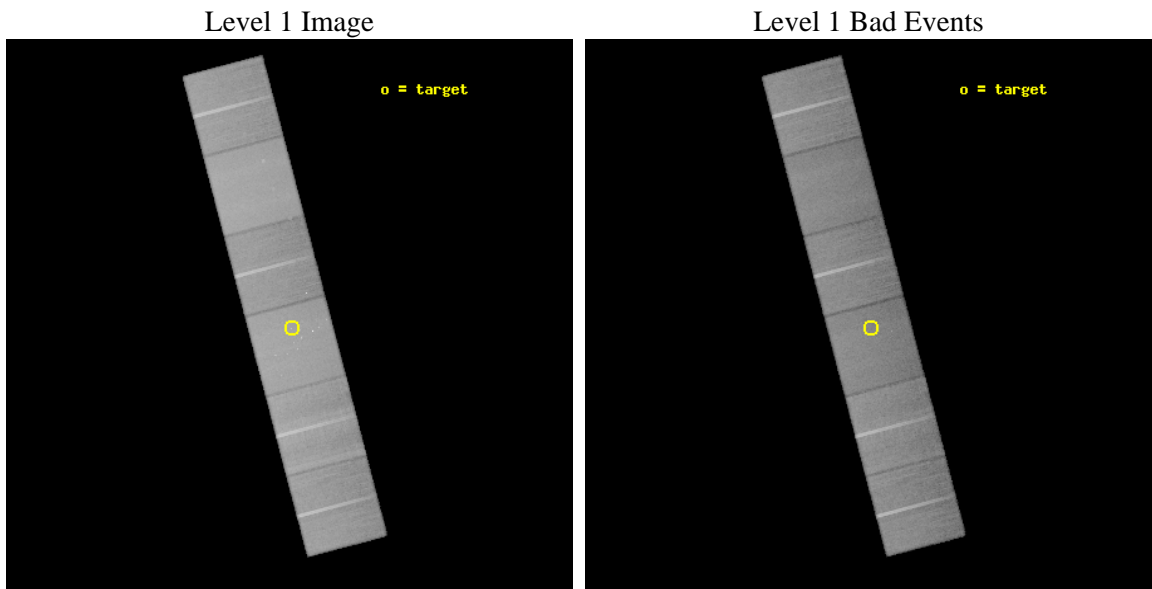
seq_num	500454	Sequence number
obs_id	4629	Observation id
title	Prompt Chandra Observations of Nearby Supernovae	Proposal title
observer	Prof. Walter Lewin	Principal investigator
object	SN 2004dj	Source name
dtcycle	0	&#160
cycle	P	events from which exps? Prim/Second/Both
ra_targ	114.32125	Observer's specified target RA [deg]
dec_targ	65.599528	Observer's specified target Dec [deg]
ra_nom	114.33108852682	Nominal RA [deg]
dec_nom	65.608316831194	Nominal Dec [deg]
roll_nom	75.22119495957	Nominal Roll [deg]
revision	3	Processing version of data
ontime	45142.399831831	Sum of GTIs [s]
livetime	44570.779583671	Livetime [s]
ontime4	45142.399831831	Sum of GTIs [s]
ontime5	45142.399831831	Sum of GTIs [s]
ontime6	45139.15884164	Sum of GTIs [s]
ontime7	45142.399831831	Sum of GTIs [s]
ontime8	45139.158961177	Sum of GTIs [s]
ontime9	45142.399831831	Sum of GTIs [s]
l2events	557015	Number of level 2 events



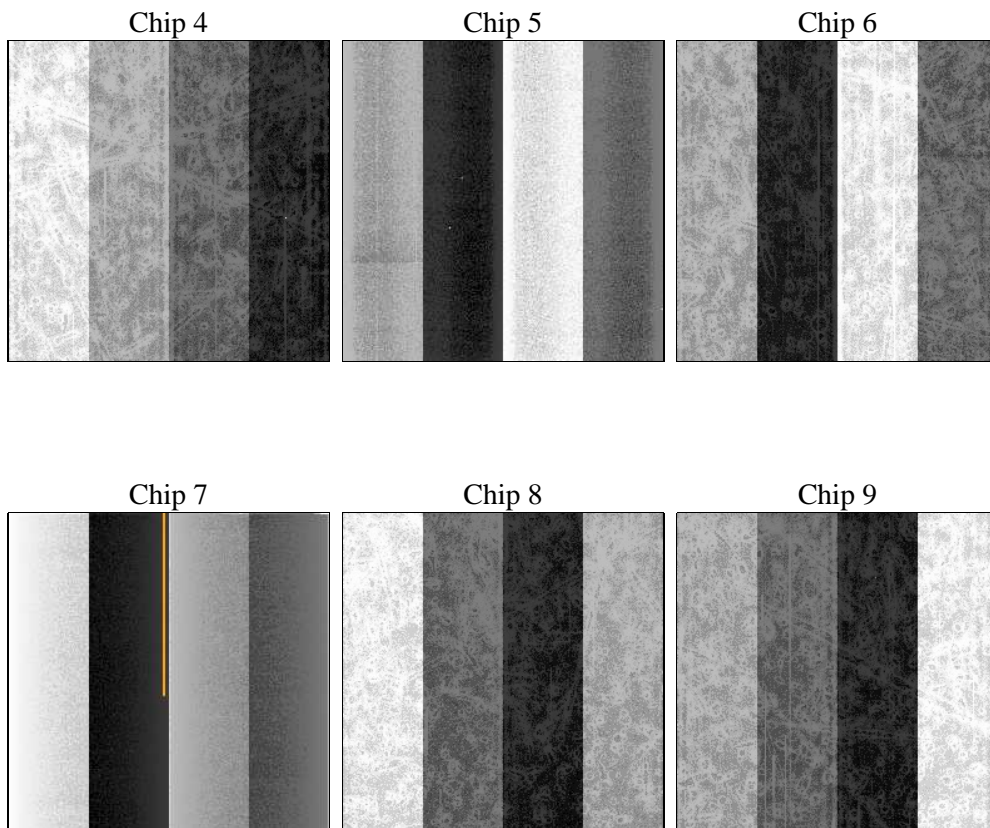
## 2 OBI

### 2.1 OBI

#### 2.1.1 Images



#### 2.1.2 Bias



### 2.1.3 Parameters

obi_num	0	Obi number	sched_exp_time	45000.000000	[s] Scheduled observation exposure time
ascdsver	8.5	Processing system revision	ontime	45142.399831831	Sum of GTIs [s]
caldbver	4.5.4	&#160	ontime4	45142.399831831	Sum of GTIs [s]
date	2012-12-09T19:41:55	Date and time of file creation	ontime5	45142.399831831	Sum of GTIs [s]
revision	3	Processing version of data	ontime6	45139.15884164	Sum of GTIs [s]
			ontime7	45142.399831831	Sum of GTIs [s]
			ontime8	45139.158961177	Sum of GTIs [s]
			ontime9	45142.399831831	Sum of GTIs [s]
			l1events	2497465	Number of level 1 events

### 2.1.4 Events

	ccd 4	ccd 5	ccd 6	ccd 7	ccd 8	ccd 9		ccd 4	ccd 5	ccd 6	ccd 7	ccd 8	ccd 9
level 1 events	386479	501653	352231	470516	438992	347594	grade 0 events	18628	14578	17019	19311	28703	17423
rejected events	343970	278435	310436	272483	347843	305654		4%	2%	4%	4%	6%	5%
rejected %	89%	55%	88%	57%	79%	87%	grade 1 events	349	569	197	483	266	215
								0%	0%	0%	0%	0%	0%
							grade 2 events	8750	67844	8648	39955	20060	8174
								2%	13%	2%	8%	4%	2%
							grade 3 events	4299	9008	4081	17536	9741	4205
								1%	1%	1%	3%	2%	1%
							grade 4 events	4175	8586	3948	17563	9104	4156
								1%	1%	1%	3%	2%	1%
							grade 5 events	15226	37247	15686	44169	21144	16853
								3%	7%	4%	9%	4%	4%
							grade 6 events	6701	123479	8130	103870	23643	8035
								1%	24%	2%	22%	5%	2%
							grade 7 events	328351	240342	294522	227629	326331	288533
								84%	47%	83%	48%	74%	83%

## 2.2 Compared Parameters

Parameter	Planned	Actual	Parameter	Planned	Actual
Instrument	ACIS	ACIS	Obspar format version number	7	7
Detector	ACIS-456789	ACIS-456789	Obspar file type	PREDICTED	ACTUAL
Grating	NONE	NONE	Obspar update status	NONE	UPDATED
Data mode	FAINT	FAINT	Number of optional ACIS chips dropped	0	0
Observation mode	POINTING	POINTING	On-chip summing requested	N	N
[deg] Pointing RA	114.349252	114.3310885268158	Subarray requested	NONE	NONE
[deg] Pointing Dec	65.582110	65.60831683119443	Alternating exposures requested	N	N
[deg] Pointing Roll	75.048027	75.22119495957006	[s] Primary exposure time	0.000000	3.2
[mm] SIM focus pos	-0.684267	-0.6828225247311905			
[mm] SIM defocus	0	0.001444936568705701			
[mm] SIM translation stage pos	-190.132523	-190.1400660498719			
[mm] SIM translation stage offset	0	0.00754346686406393			
[s] Observation start time (MET)	213208257.184000	213207126.31561			
Observation start date	2004-10-03T16:29:53	2004-10-03T16:12:06			
[s] Observation end time (MET)	213253257.184000	213254697.59273			
Observation end date	2004-10-04T04:59:53	2004-10-04T05:24:57			
Read mode	TIMED	TIMED			

## 2.3 Aspect

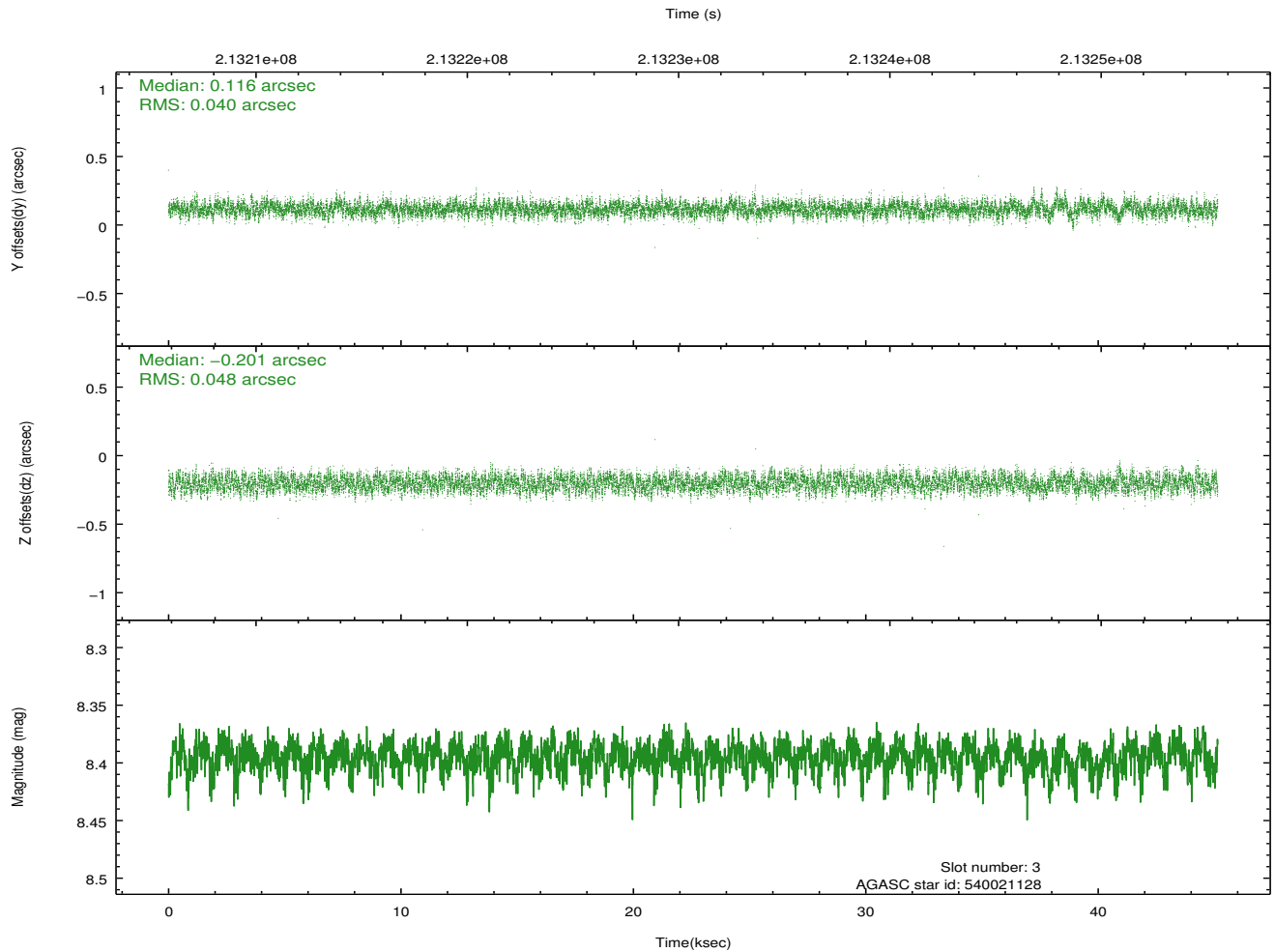
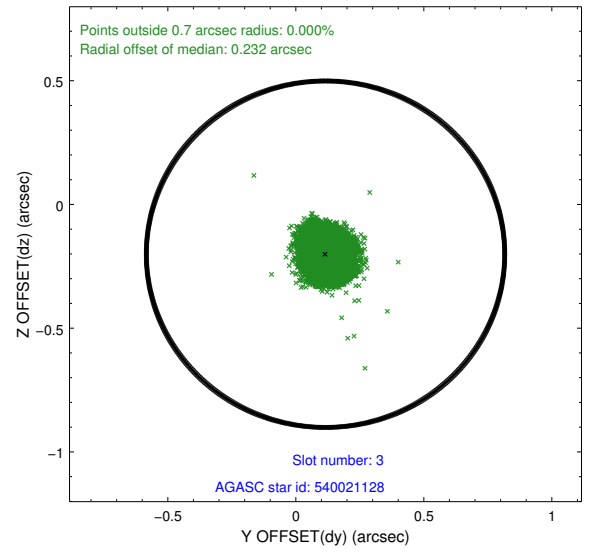
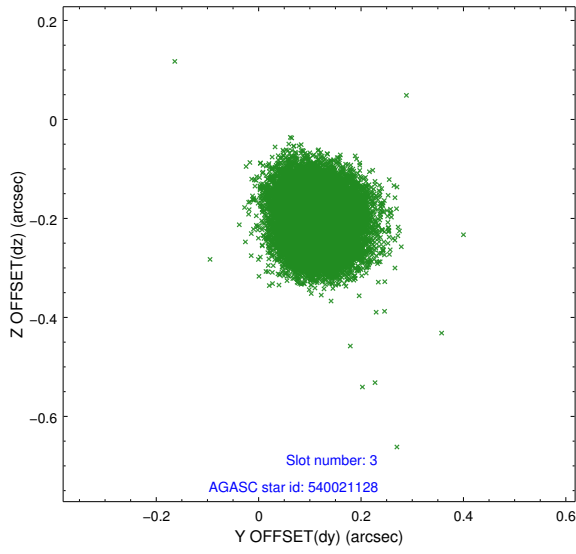


### Slot Statistics

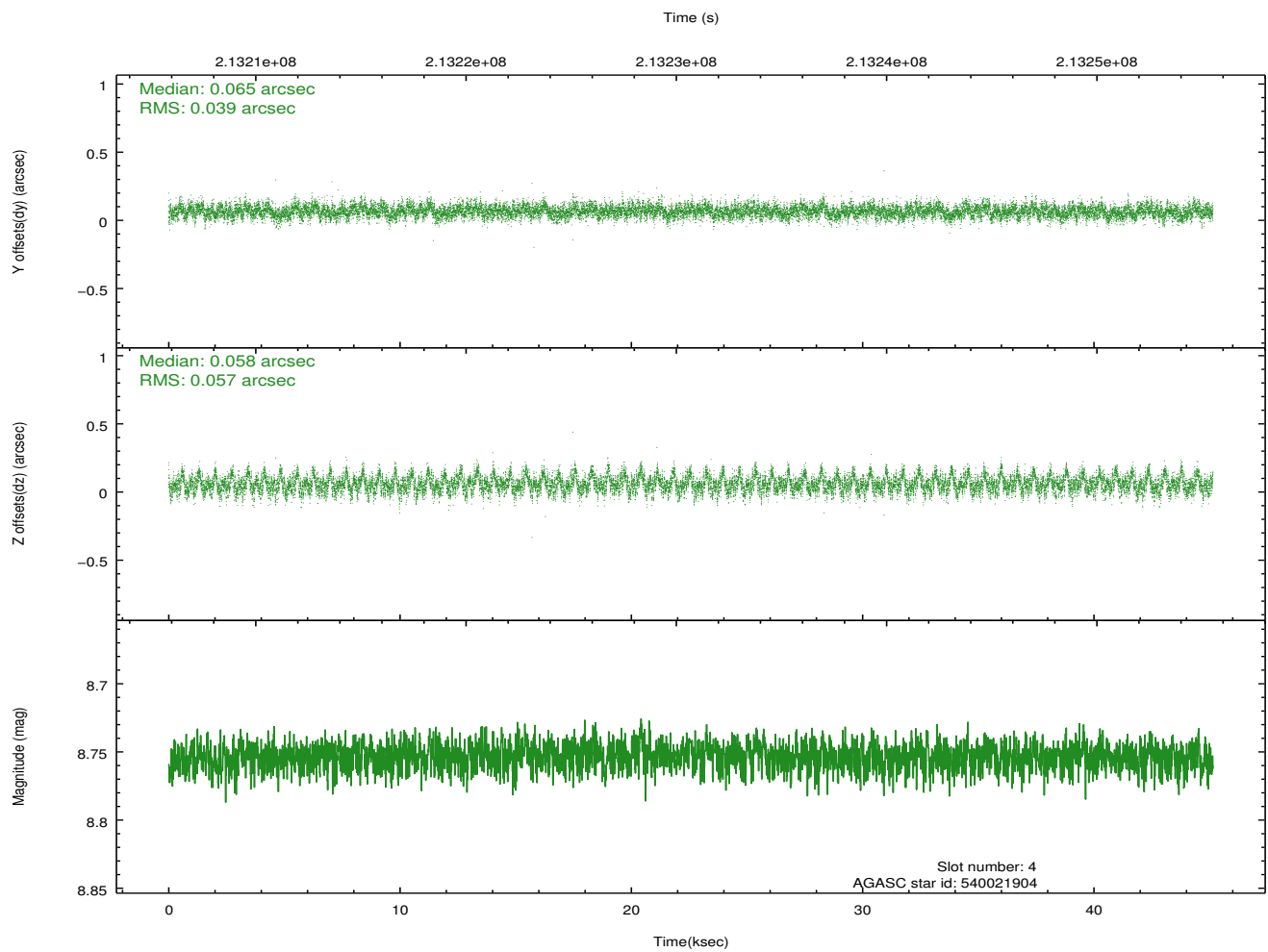
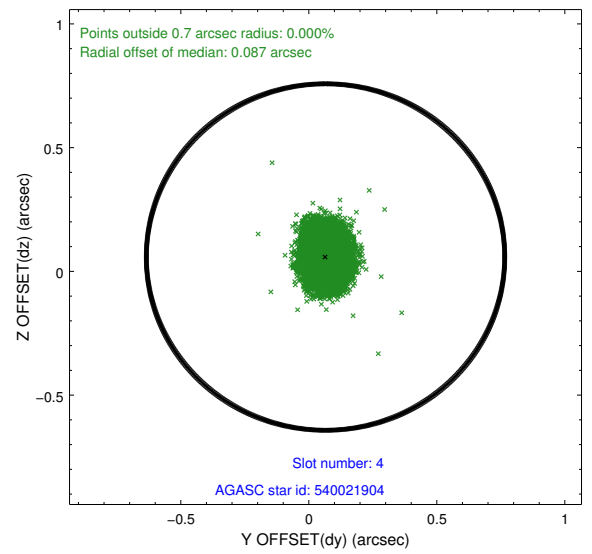
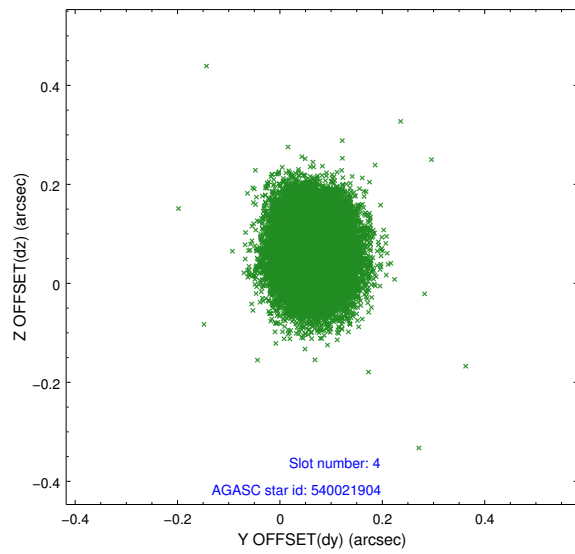
slot	status	id	mag	n_pts	med_dy	med_dz	dr1	dr2	ra	dec	mean_y	mean_z
0	FID	ACIS-S-1	7.18	11011	0.008	-0.016	0.025	0.039	0.000000	0.000000	937.87	-1726.97
1	FID	ACIS-S-5	7.23	11012	-0.083	-0.006	0.014	0.022	0.000000	0.000000	-1811.19	170.64
2	FID	ACIS-S-6	7.35	11012	0.054	0.038	0.032	0.045	0.000000	0.000000	403.51	814.61
3	GUIDE	540021128	8.40	22021	0.116	-0.201	0.068	0.106	114.291258	65.330448	-897.35	-149.86
4	GUIDE	540021904	8.75	22013	0.065	0.058	0.073	0.120	114.203372	65.242134	-1238.67	-103.32
5	GUIDE	540540984	9.09	22011	-0.021	0.102	0.072	0.118	115.004403	66.050286	1880.33	-488.54
6	GUIDE	540548768	8.50	21986	-0.023	-0.191	0.065	0.103	113.788166	65.673634	107.10	889.81
7	GUIDE	540153792	9.34	22010	-0.139	0.235	0.119	0.195	115.938716	65.425474	98.46	-2436.27

## 2.4 Star Slots

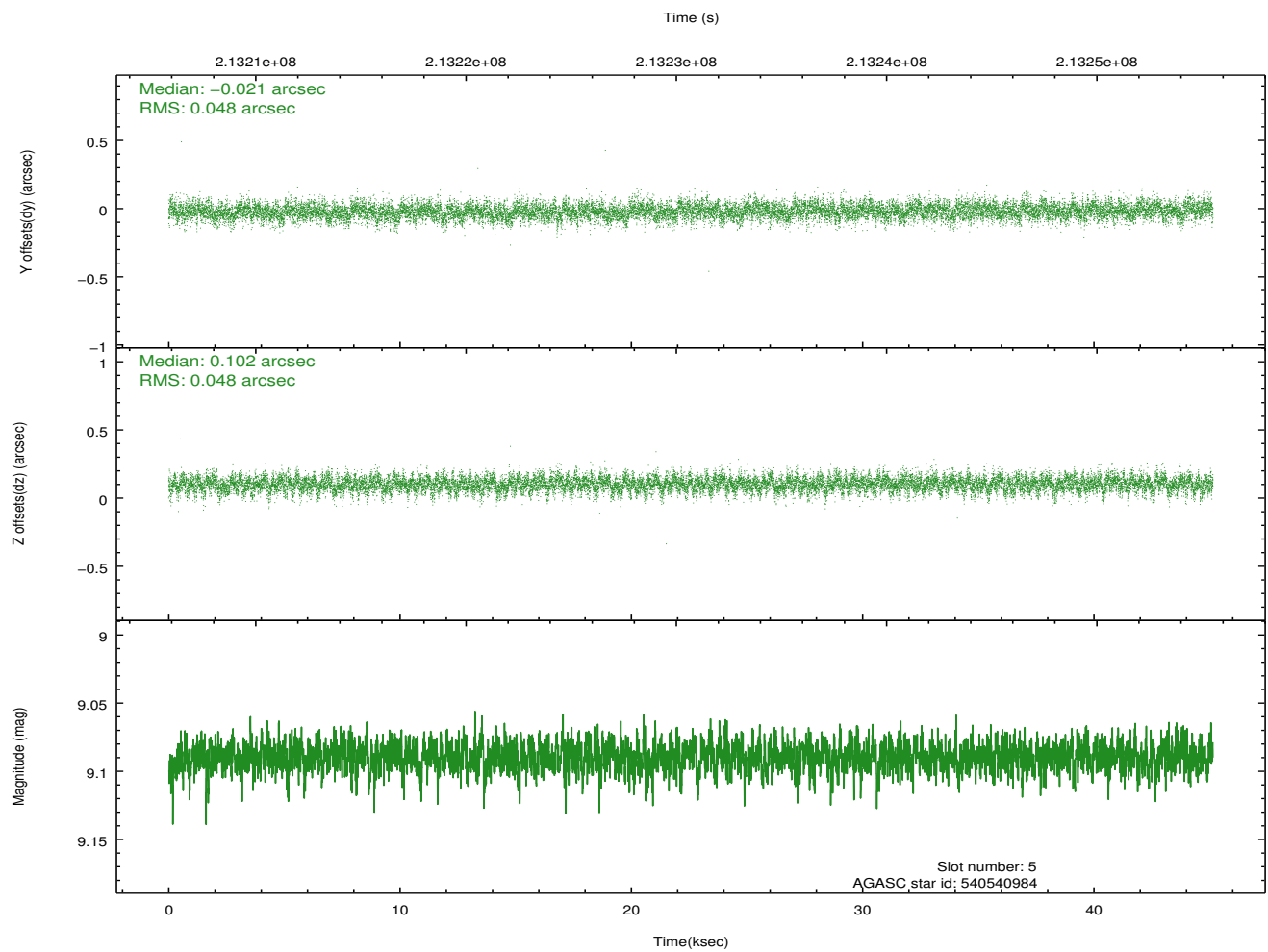
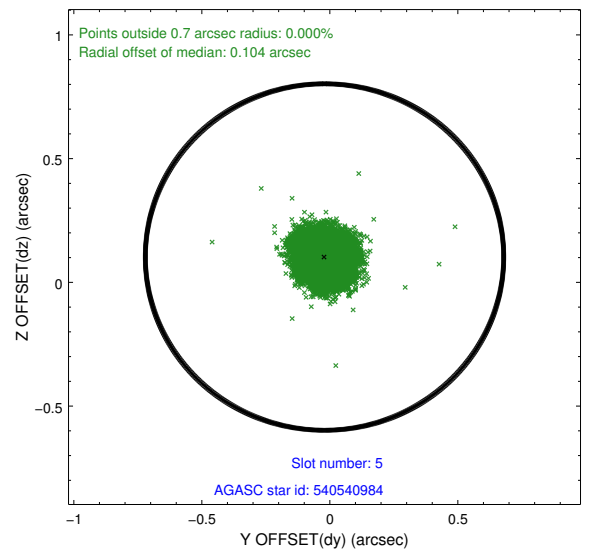
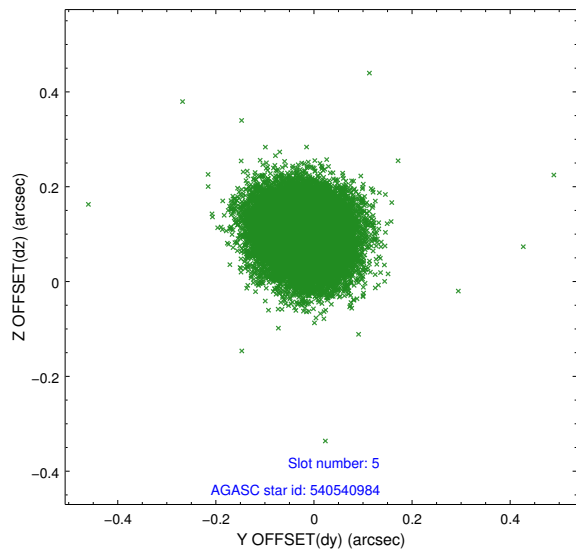
### 2.4.1 Slot 3



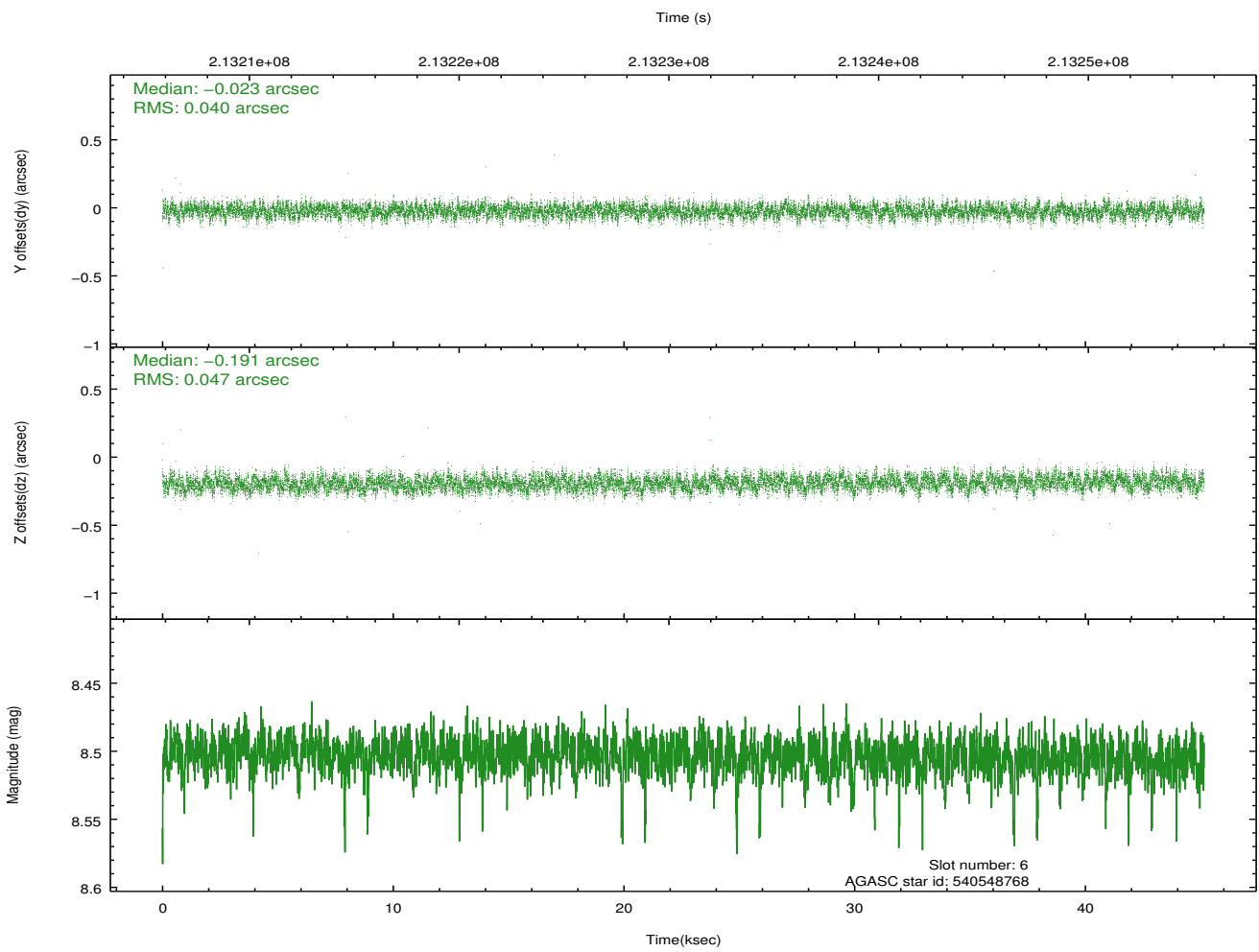
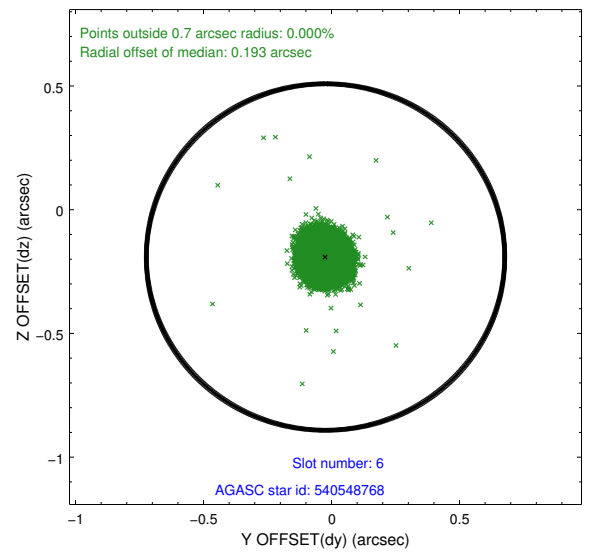
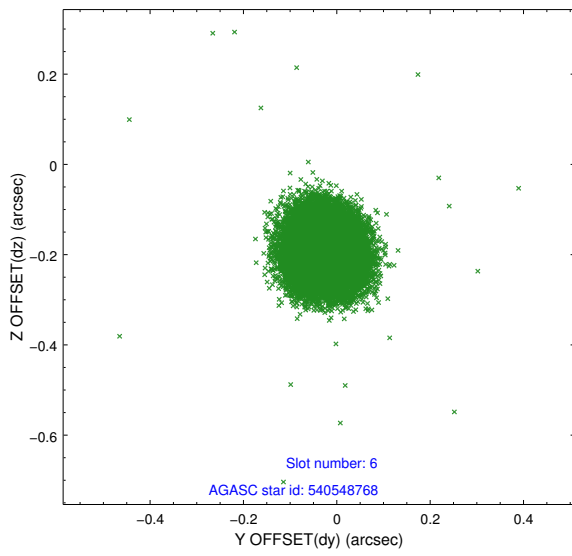
## 2.4.2 Slot 4



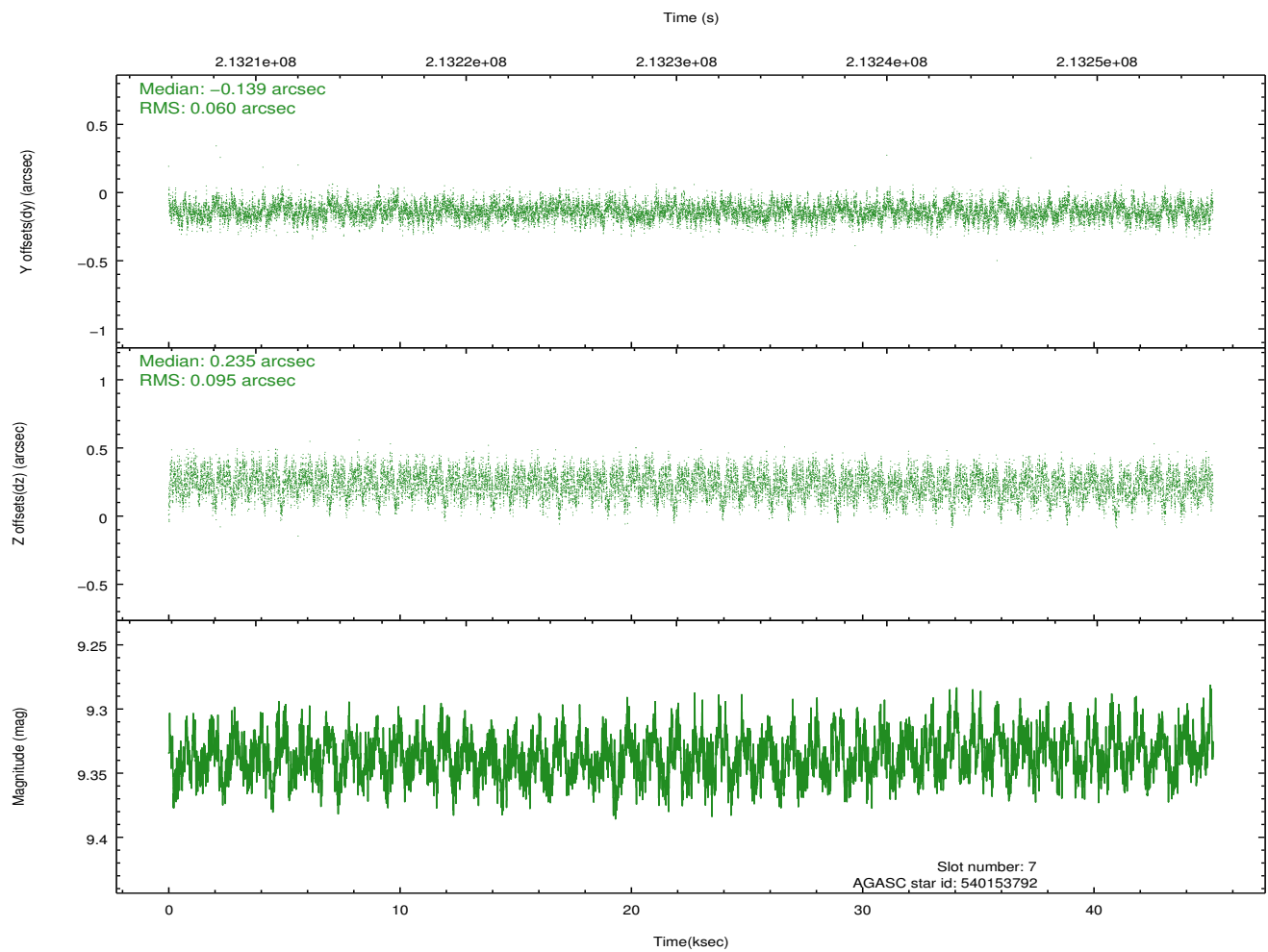
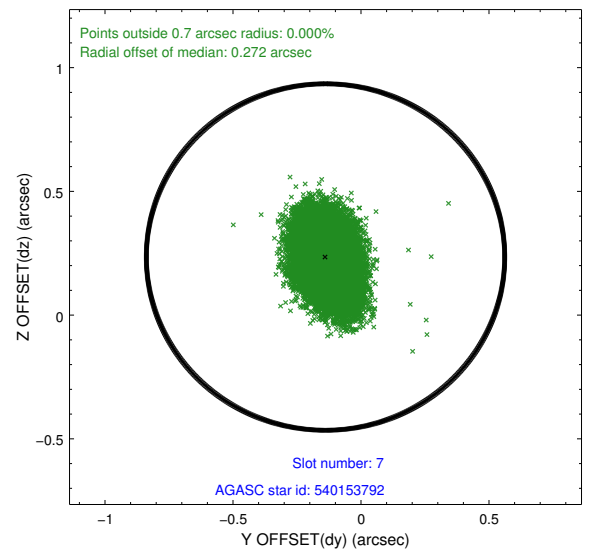
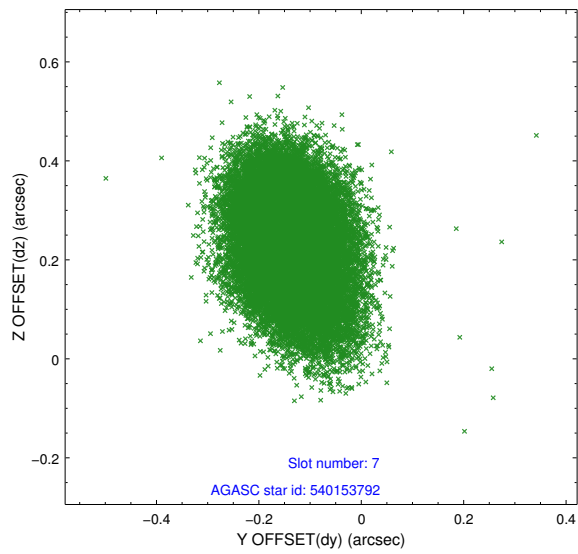
### 2.4.3 Slot 5



## 2.4.4 Slot 6

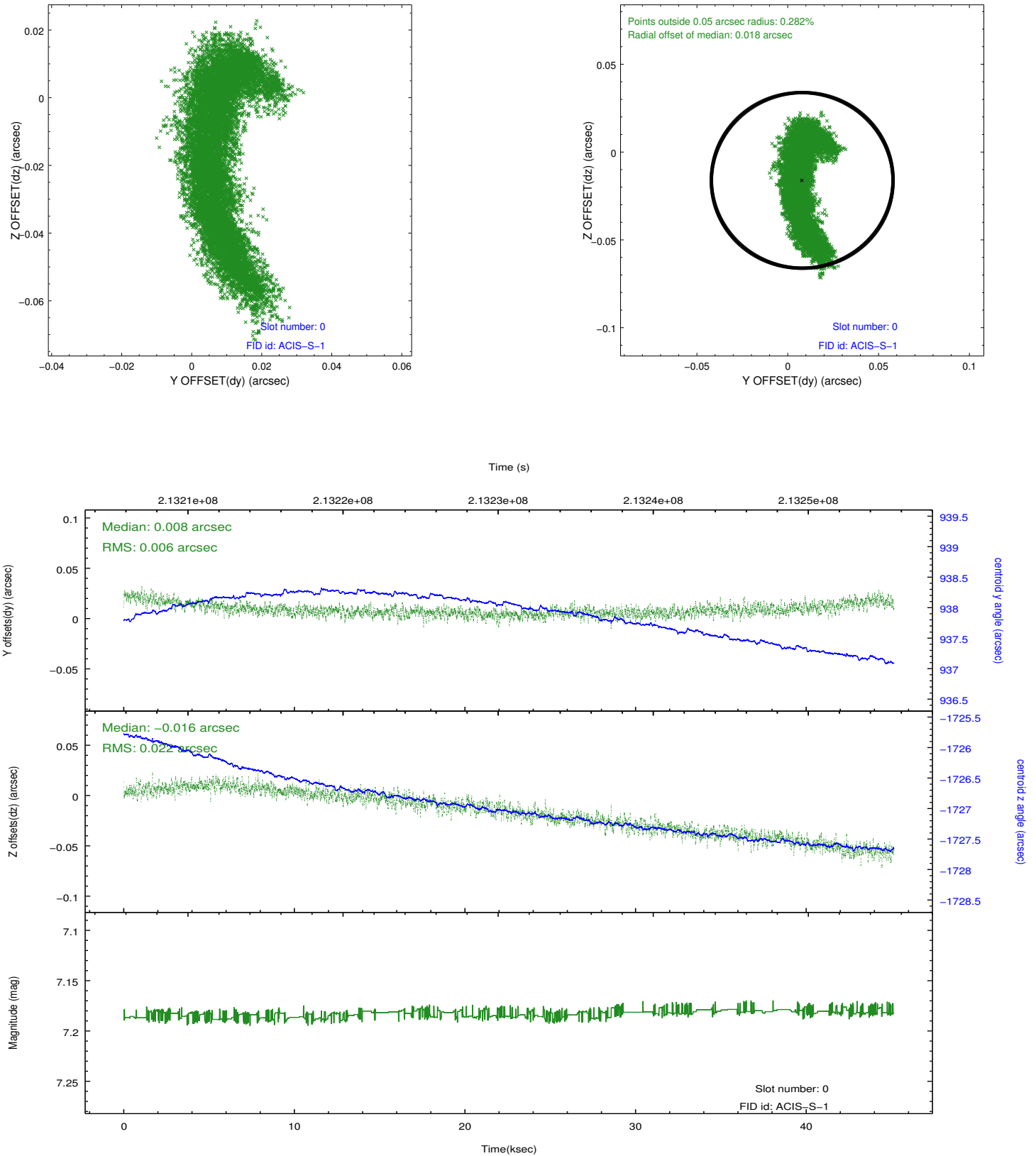


## 2.4.5 Slot 7

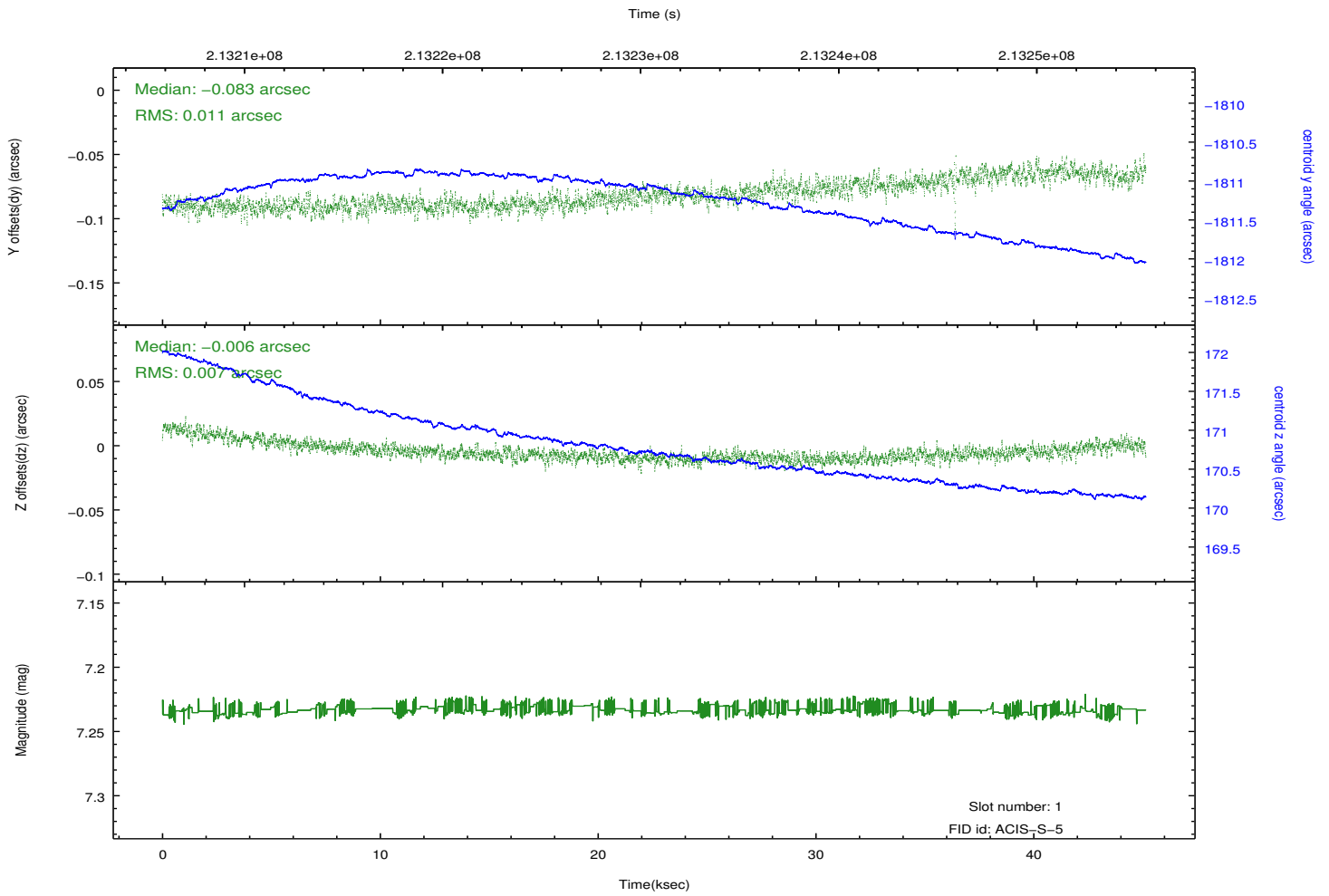
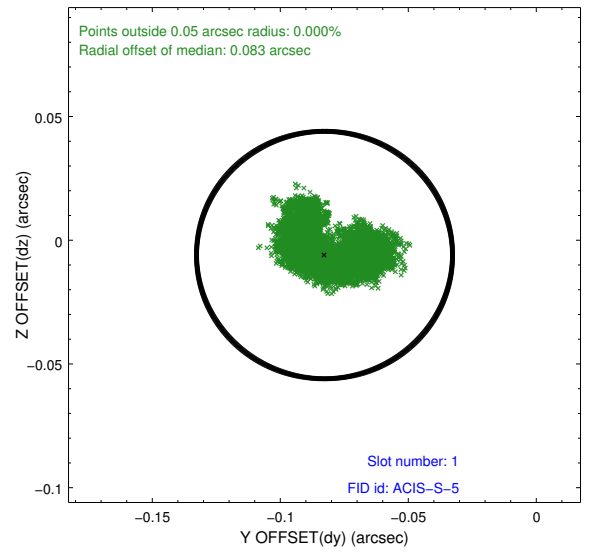
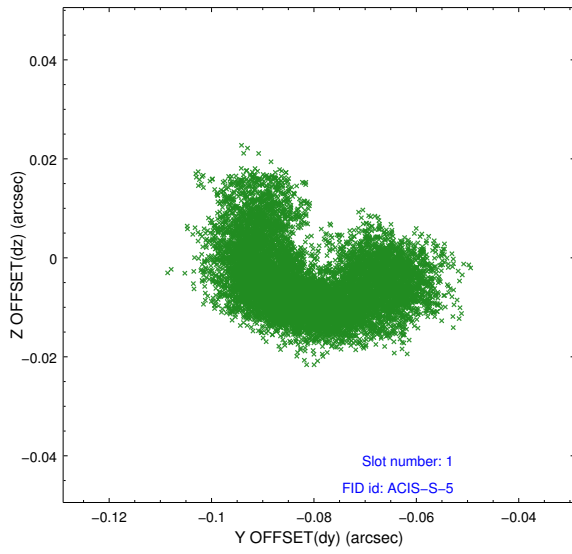


## 2.5 FID Slots

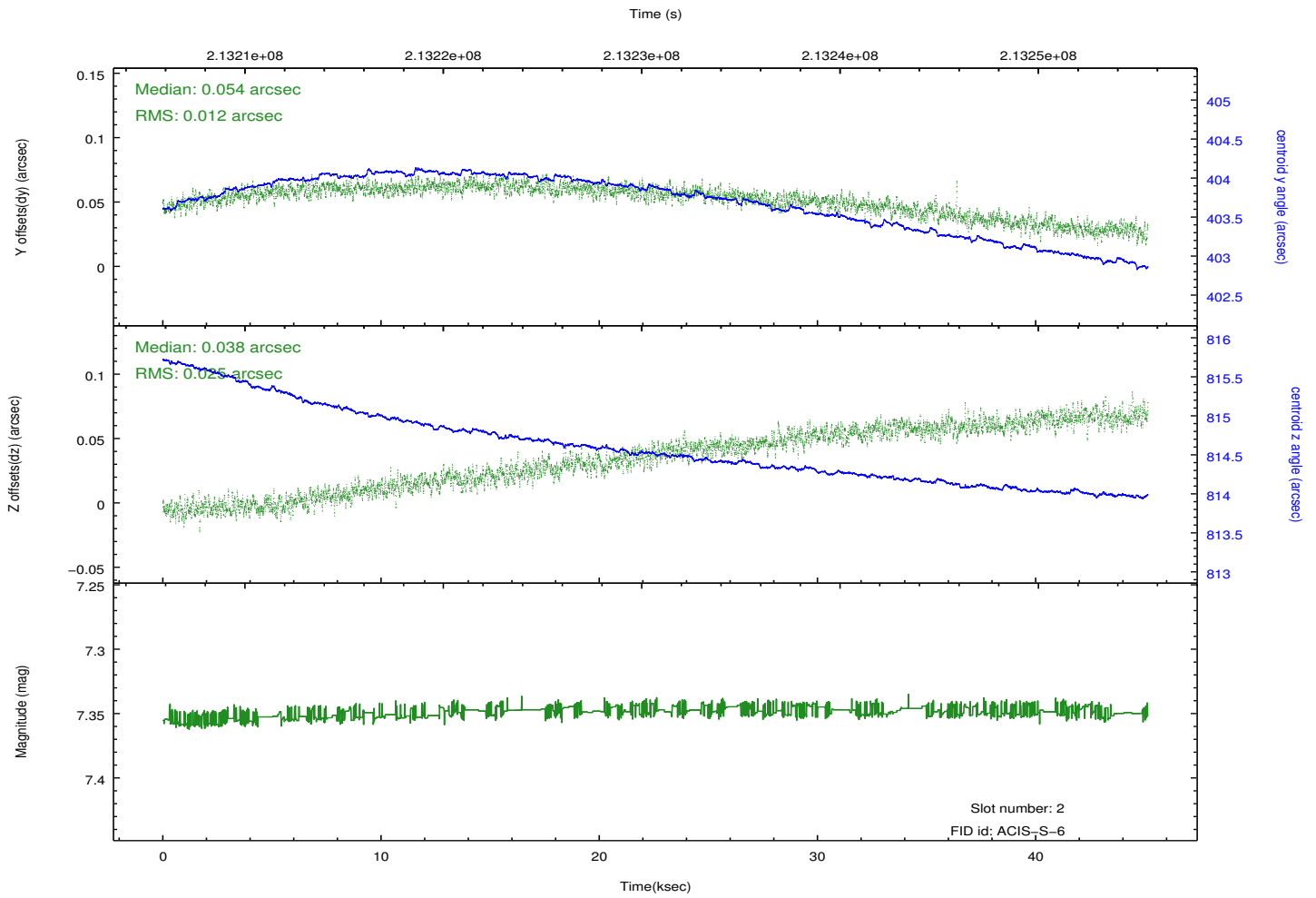
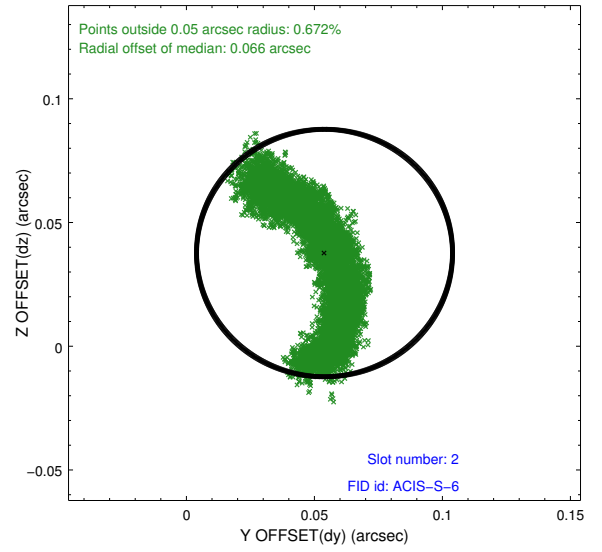
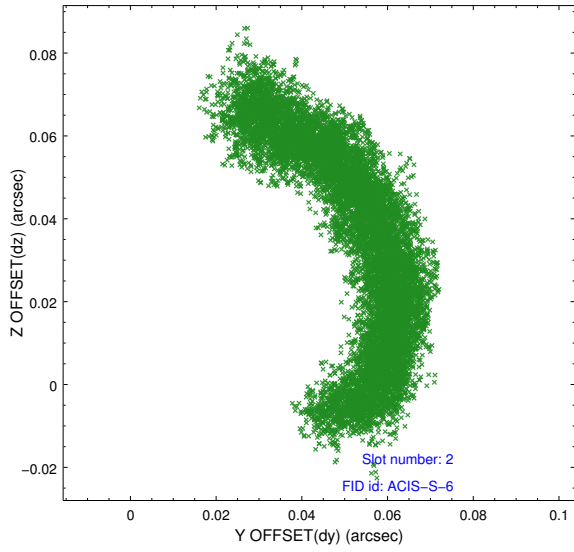
### 2.5.1 Slot 0



## 2.5.2 Slot 1



### 2.5.3 Slot 2



## **A Summary**

### **A.1 Status**

V&V Scientist	Jen Lauer
V&V Date (YYYY-MM-DD)	2013.01.03
V&V Edition	1
V&V Disposition and Status	OK
V&V Charge Time	45.142

### **A.2 Comments**