

V&V Reference Report

L2 ASCDS Version : 8.4.5

Observation 4659 - L2 Version 3
Chandra X-Ray Center

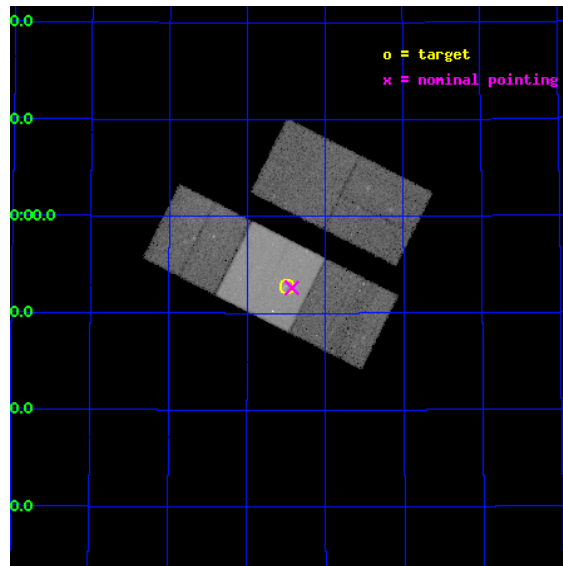
L2 Processing Date : Nov 14 2012

Contents

1	Front	2
2	OBI	3
2.1	OBI	3
2.1.1	Images	3
2.1.2	Bias	3
2.1.3	Parameters	4
2.1.4	Events	4
2.2	Compared Parameters	5
2.3	Aspect	6
2.4	Star Slots	9
2.4.1	Slot 3	9
2.4.2	Slot 4	10
2.4.3	Slot 5	11
2.4.4	Slot 6	12
2.4.5	Slot 7	13
2.5	FID Slots	14
2.5.1	Slot 0	14
2.5.2	Slot 1	15
2.5.3	Slot 2	16
A	Summary	17
A.1	Status	17
A.2	Comments	17

1 Front

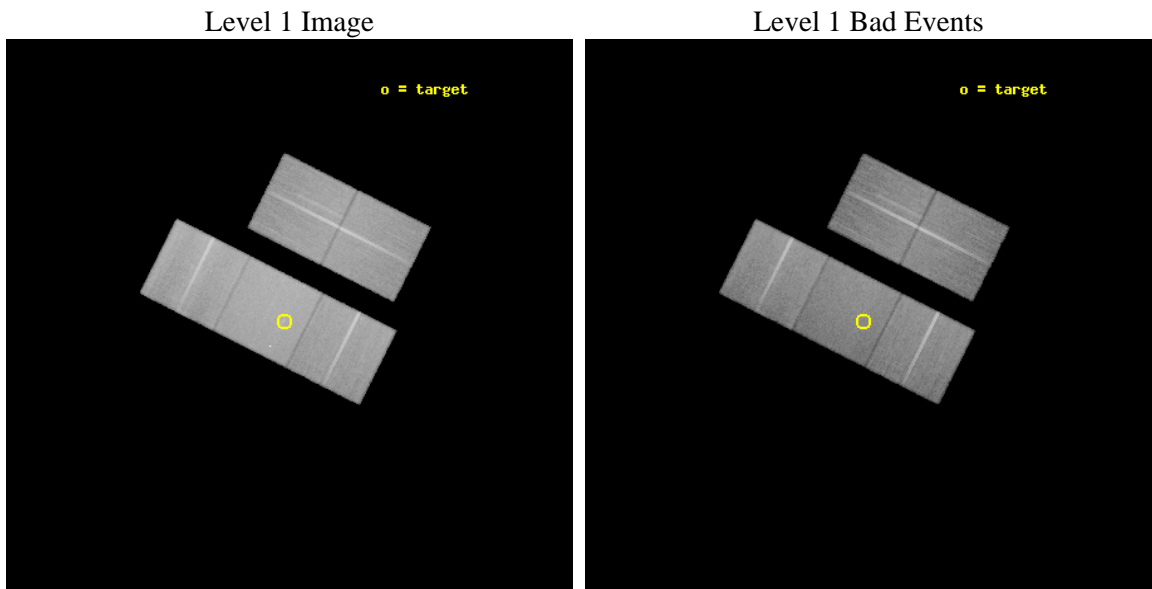
seq_num	500478	Sequence number
obs_id	4659	Observation id
title	In-depth Study of the Nearest Collapsars	Proposal title
observer	Prof. Shrinivas Kulkarni	Principal investigator
object	SN2004C	Source name
dtcycle	0	
cycle	P	events from which exps? Prim/Second/Both
ra_targ	171.87375	Observer's specified target RA [deg]
dec_targ	56.880028	Observer's specified target Dec [deg]
ra_nom	171.85677291086	Nominal RA [deg]
dec_nom	56.877261102154	Nominal Dec [deg]
roll_nom	206.71354082514	Nominal Roll [deg]
revision	3	Processing version of data
ontime	40172.899922729	Sum of GTIs [s]
livetime	39648.011410379	Livetime [s]
ontime2	40172.899922729	Sum of GTIs [s]
ontime3	40172.899922729	Sum of GTIs [s]
ontime6	40172.899922729	Sum of GTIs [s]
ontime7	40172.899922729	Sum of GTIs [s]
ontime8	40166.61796236	Sum of GTIs [s]
l2events	269929	Number of level 2 events



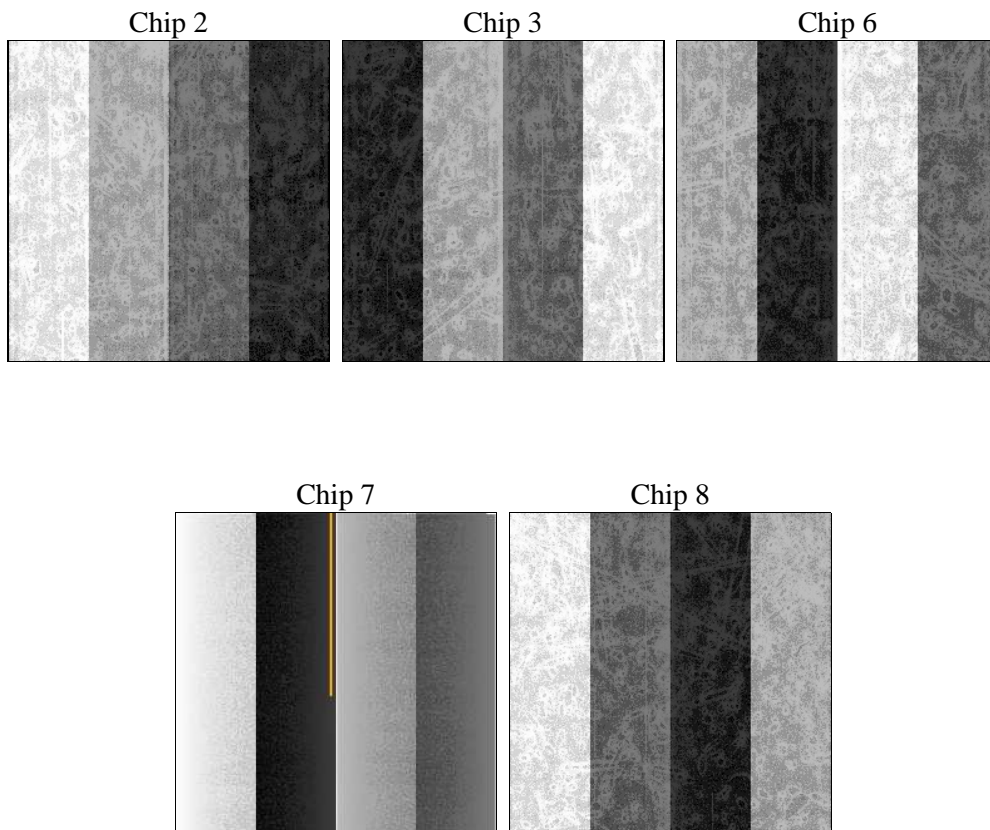
2 OBI

2.1 OBI

2.1.1 Images



2.1.2 Bias



2.1.3 Parameters

obi_num	0	Obi number	sched_exp_time	40000.000000	[s] Scheduled observation exposure time
ascdsver	8.4.5	Processing system revision	ontime	40172.899922729	Sum of GTIs [s]
caldbver	4.5.2	 	ontime2	40172.899922729	Sum of GTIs [s]
date	2012-11-14T05:28:42	Date and time of file creation	ontime3	40172.899922729	Sum of GTIs [s]
revision	3	Processing version of data	ontime6	40172.899922729	Sum of GTIs [s]
			ontime7	40172.899922729	Sum of GTIs [s]
			ontime8	40166.61796236	Sum of GTIs [s]
			l1events	1564387	Number of level 1 events

2.1.4 Events

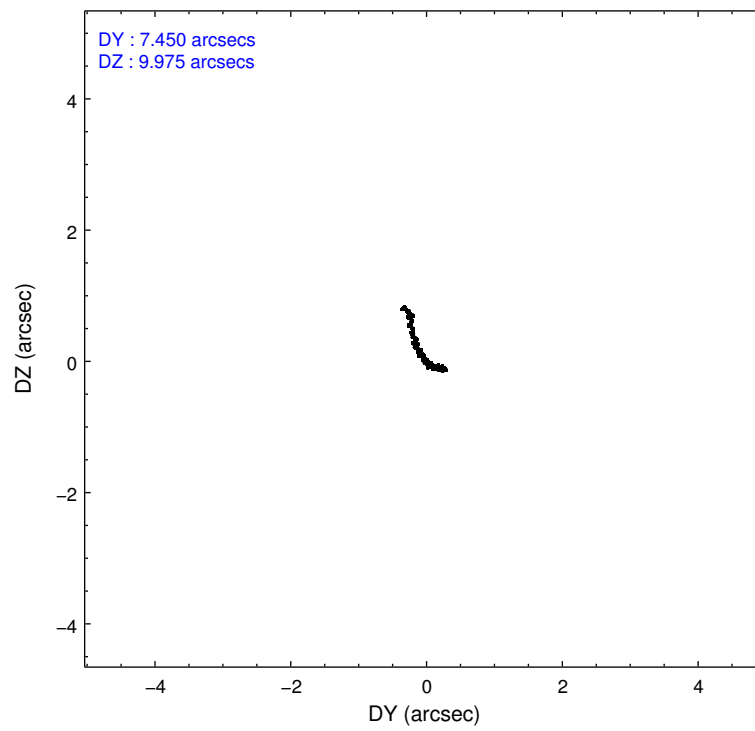
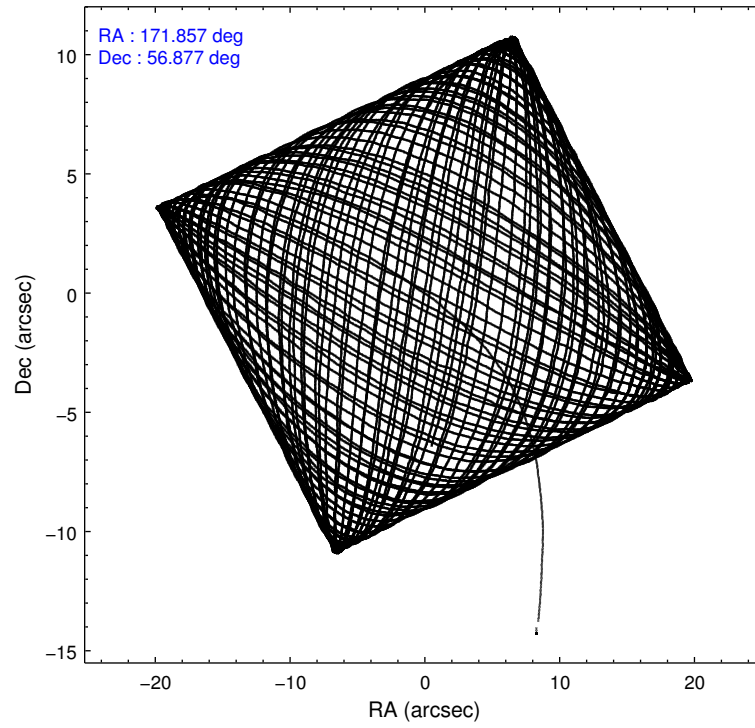
	ccd 2	ccd 3	ccd 6	ccd 7	ccd 8
level 1 events	267214	275582	284345	380124	357122
rejected events	234991	244153	251345	223545	283369
rejected %	87%	88%	88%	58%	79%

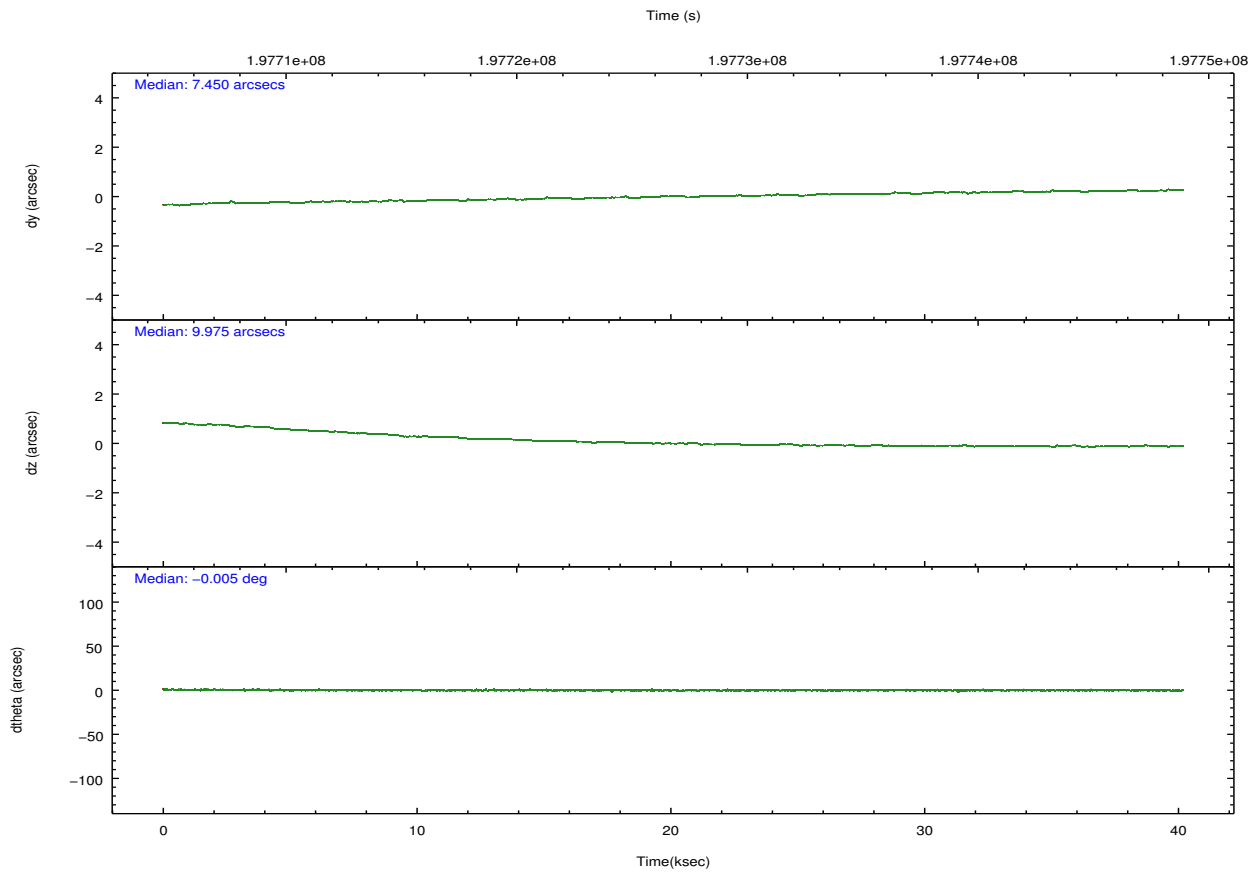
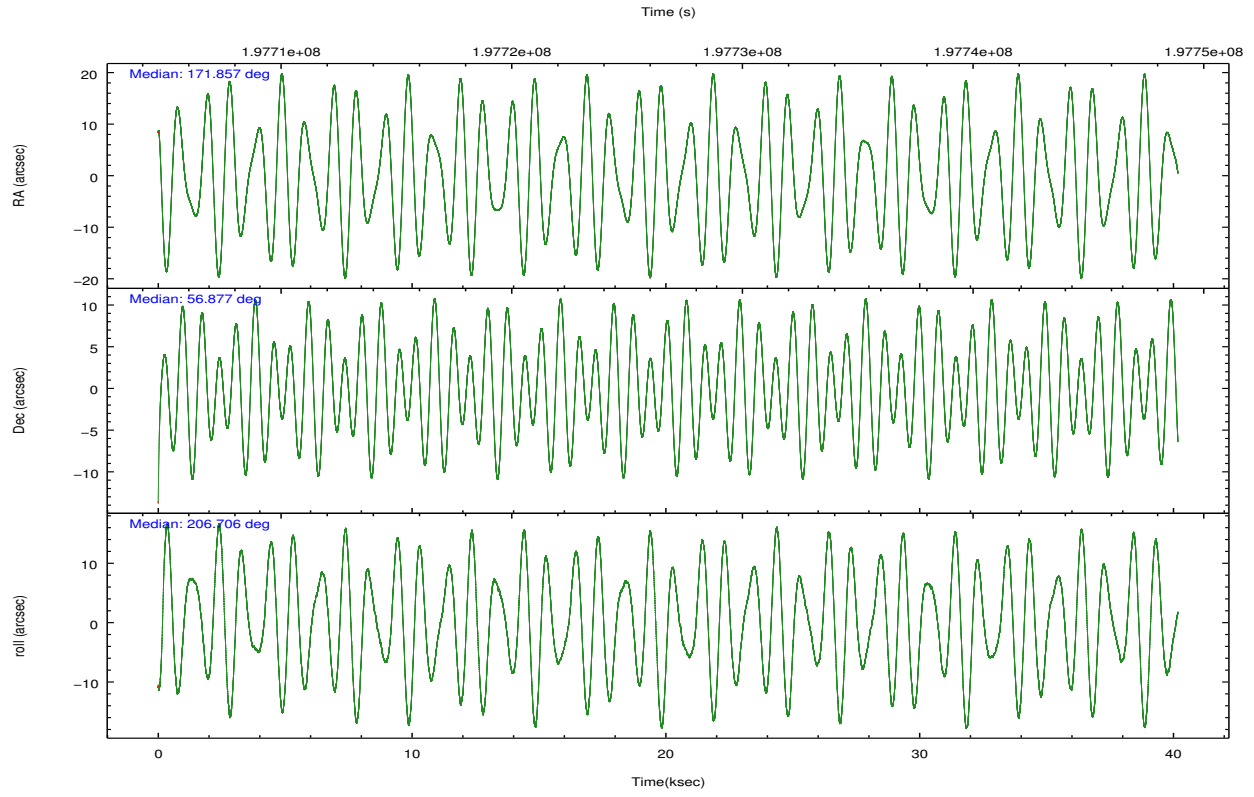
	ccd 2	ccd 3	ccd 6	ccd 7	ccd 8
grade 0 events	14447	13544	13099	15102	23817
	5%	4%	4%	3%	6%
grade 1 events	154	175	138	374	236
	0%	0%	0%	0%	0%
grade 2 events	6592	6268	7030	31762	16372
	2%	2%	2%	8%	4%
grade 3 events	3084	3236	3325	14190	7935
	1%	1%	1%	3%	2%
grade 4 events	3038	3107	3154	14242	7294
	1%	1%	1%	3%	2%
grade 5 events	10654	12367	12945	36423	17279
	3%	4%	4%	9%	4%
grade 6 events	5388	5567	6670	83066	18953
	2%	2%	2%	21%	5%
grade 7 events	223857	231318	237984	184965	265236
	83%	83%	83%	48%	74%

2.2 Compared Parameters

Parameter	Planned	Actual	Parameter	Planned	Actual
Instrument	ACIS	ACIS	Obspar format version number	7	7
Detector	ACIS-23678	ACIS-23678	Obspar file type	PREDICTED	ACTUAL
Grating	NONE	NONE	Obspar update status	NONE	UPDATED
Data mode	VFAINT	VFAINT	Number of optional ACIS chips dropped	0	0
Observation mode	POINTING	POINTING	On-chip summing requested	N	N
[deg] Pointing RA	171.883581	171.8567729108586	Subarray requested	NONE	NONE
[deg] Pointing Dec	56.900227	56.87726110215421	Alternating exposures requested	N	N
[deg] Pointing Roll	206.534459	206.7135408251418	[s] Primary exposure time	0.000000	3.1
[mm] SIM focus pos	-0.684267	-0.6828225247311905			
[mm] SIM defocus	0	0.001444936568705701			
[mm] SIM translation stage pos	-190.132523	-190.1425803651734			
[mm] SIM translation stage offset	0	0.01005778216563158			
[s] Observation start time (MET)	197706863.184000	197705633.96565			
Observation start date	2004-04-07T06:33:19	2004-04-07T06:13:53			
[s] Observation end time (MET)	197746863.184000	197747391.44248			
Observation end date	2004-04-07T17:39:59	2004-04-07T17:49:51			
Read mode	TIMED	TIMED			

2.3 Aspect



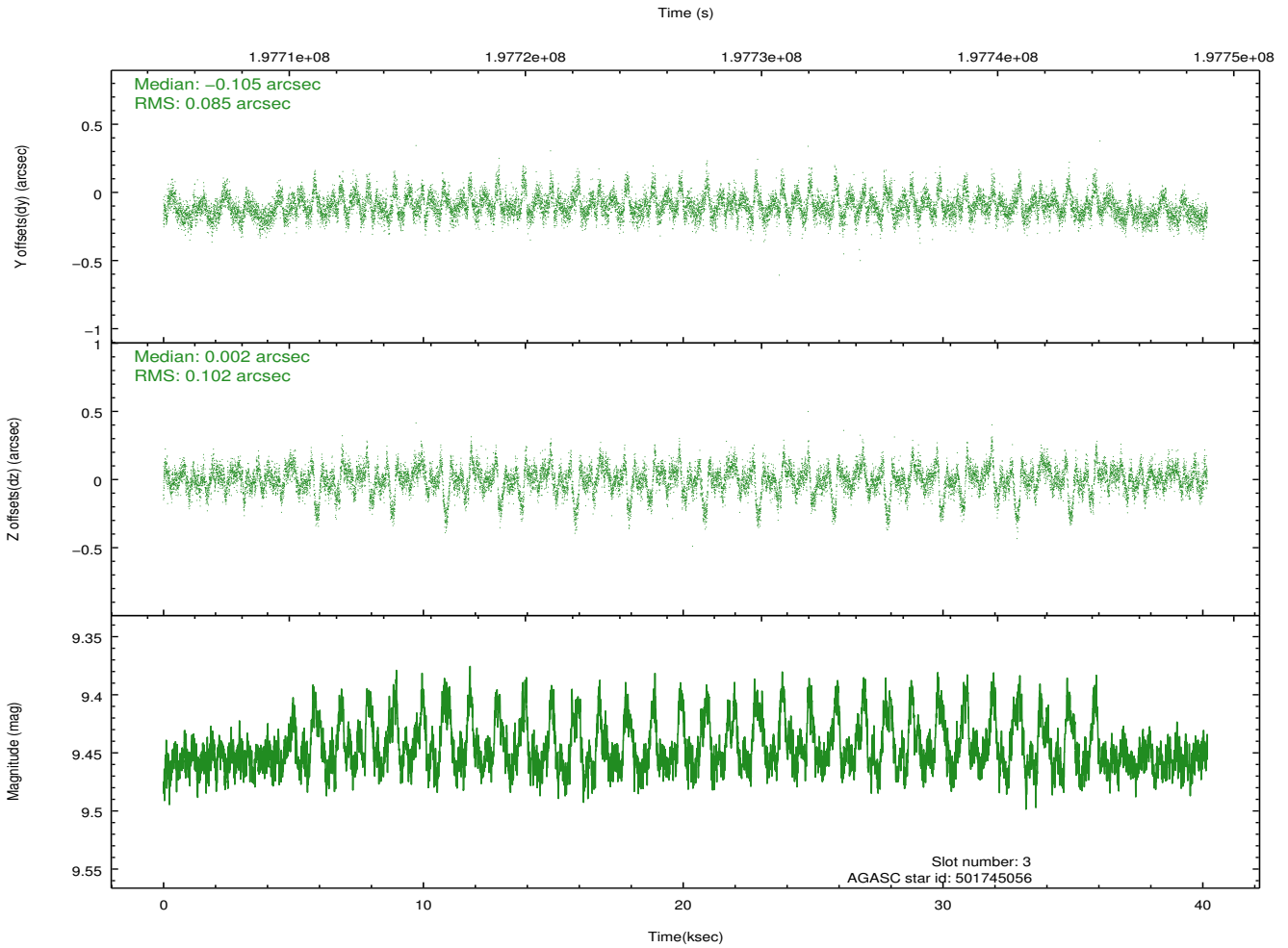
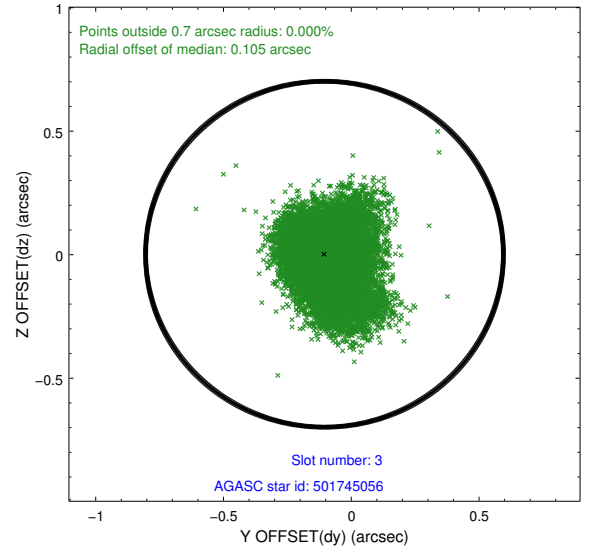
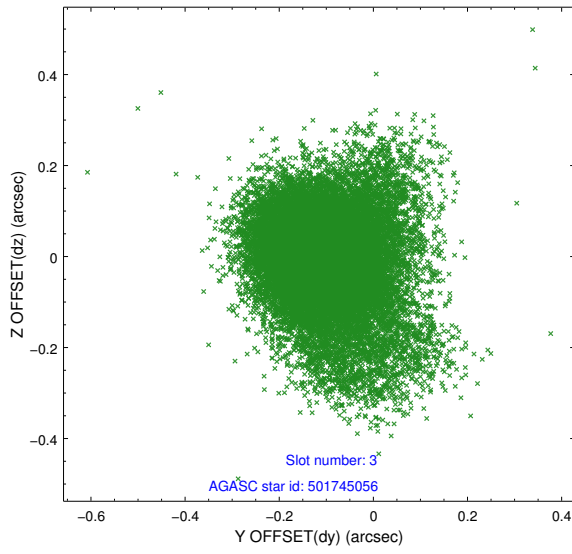


Slot Statistics

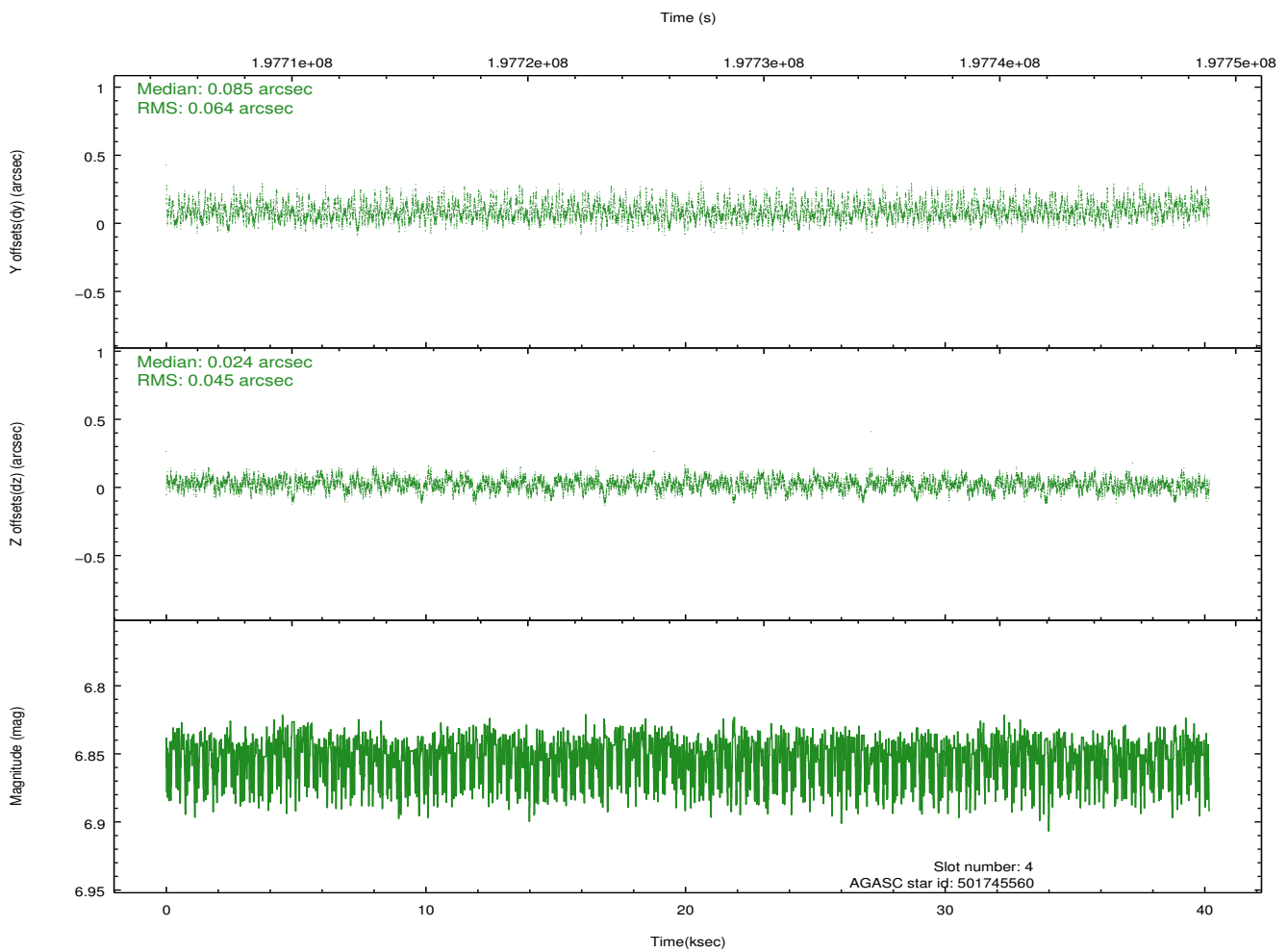
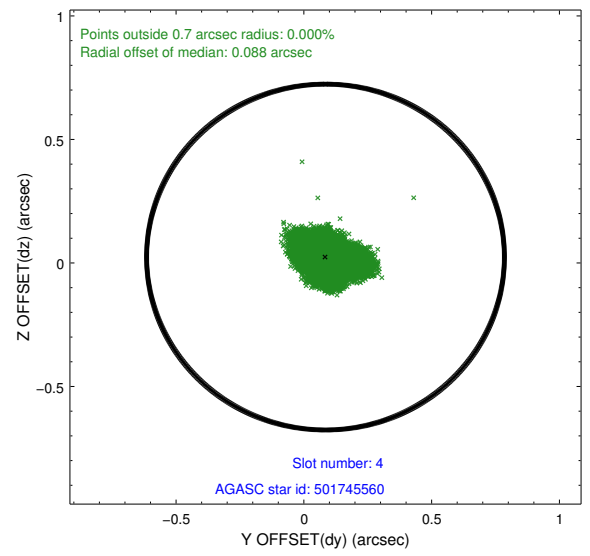
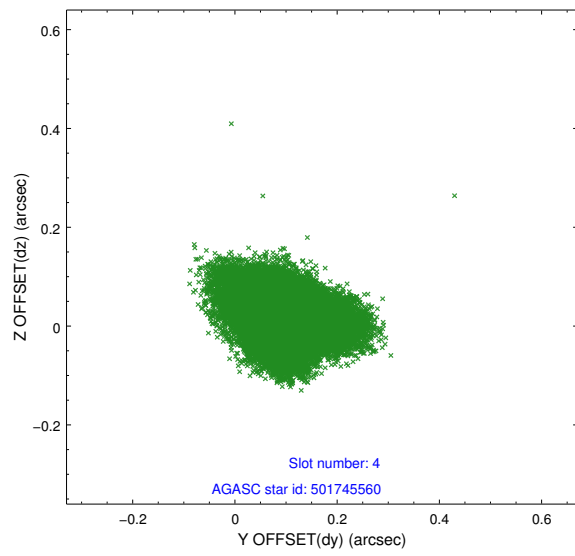
slot	status	id	mag	n_pts	med_dy	med_dz	dr1	dr2	ra	dec	mean_y	mean_z
0	FID	ACIS-S-2	7.10	9801	-0.042	-0.020	0.010	0.017	0.000000	0.000000	-760.21	-1731.34
1	FID	ACIS-S-4	7.20	9800	0.080	0.026	0.012	0.020	0.000000	0.000000	2153.15	177.23
2	FID	ACIS-S-5	7.23	9800	-0.069	0.003	0.017	0.025	0.000000	0.000000	-1813.10	170.82
3	GUIDE	501745056	9.45	19580	-0.105	0.002	0.131	0.250	173.013273	57.050098	-2227.98	489.10
4	GUIDE	501745560	6.85	19594	0.085	0.024	0.083	0.135	170.455367	57.074858	2206.98	-1836.57
5	GUIDE	501746360	8.30	19570	0.301	-0.082	0.064	0.103	171.888954	56.575508	513.28	1050.78
6	GUIDE	501747008	7.39	19598	-0.220	0.038	0.075	0.118	172.678253	56.746380	-1160.16	1188.39
7	GUIDE	501748320	9.53	19588	-0.071	0.027	0.100	0.163	170.966165	57.350324	865.07	-2255.63

2.4 Star Slots

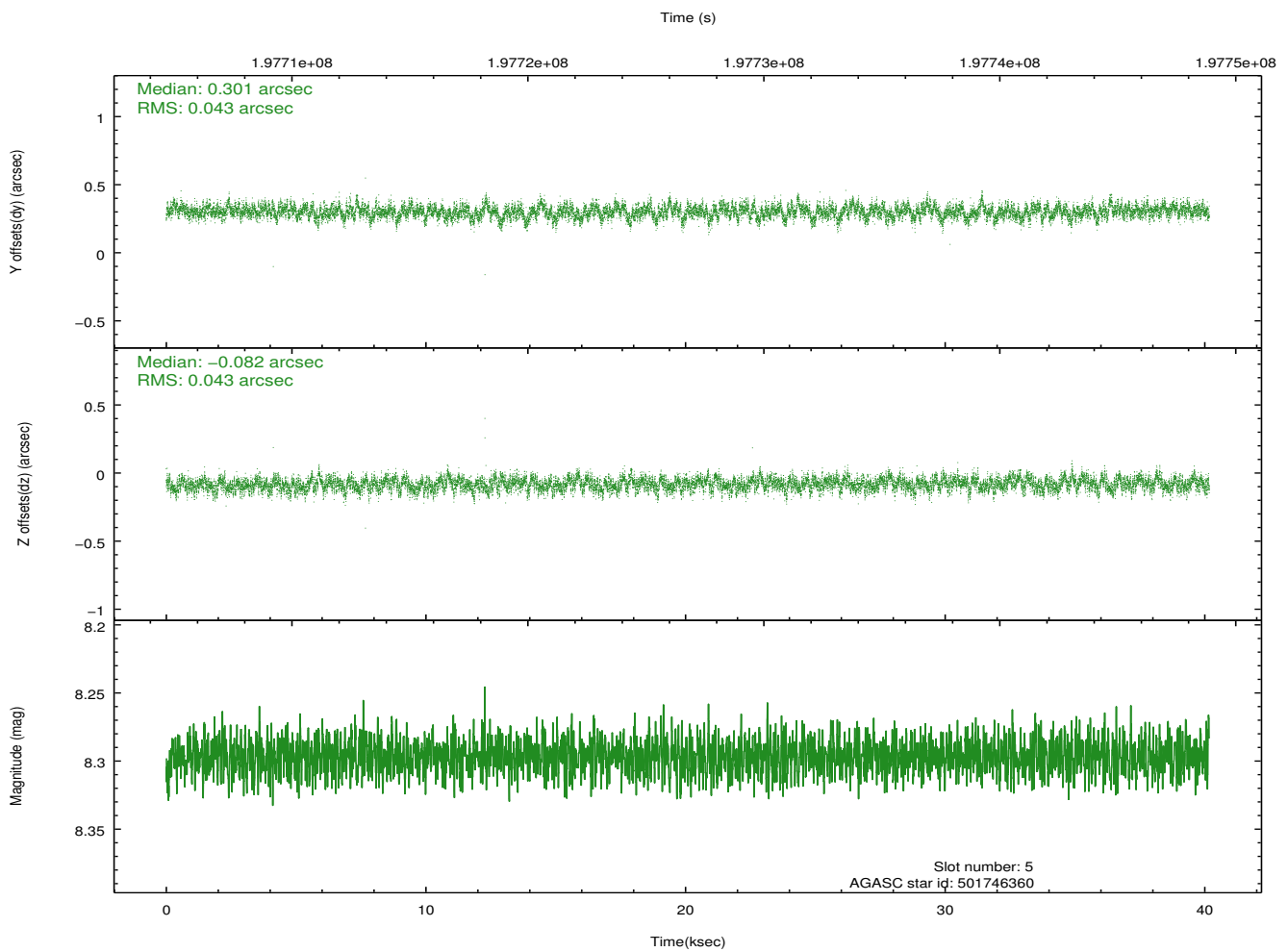
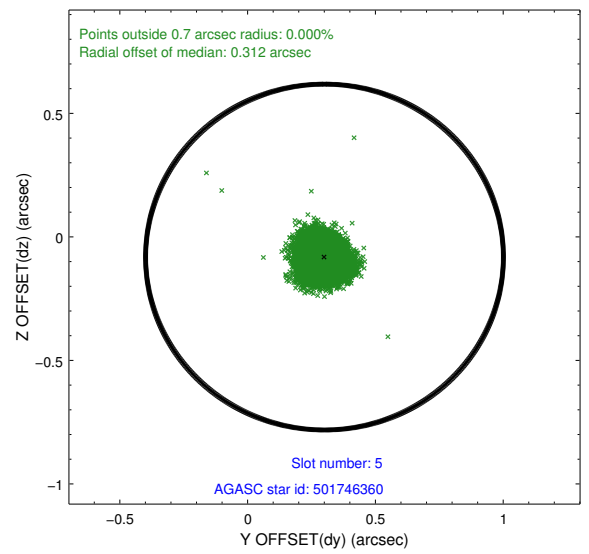
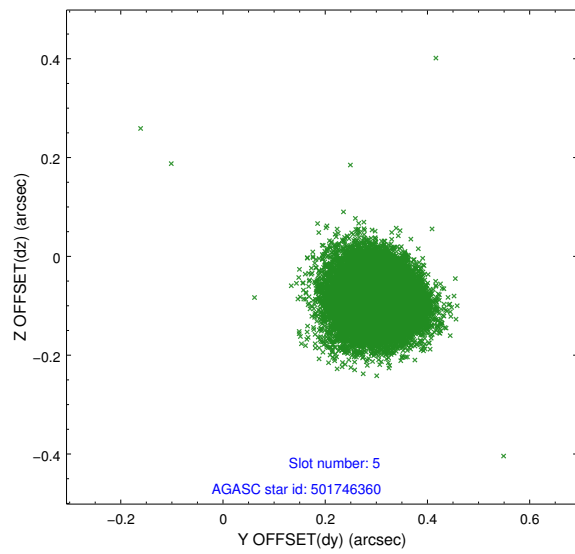
2.4.1 Slot 3



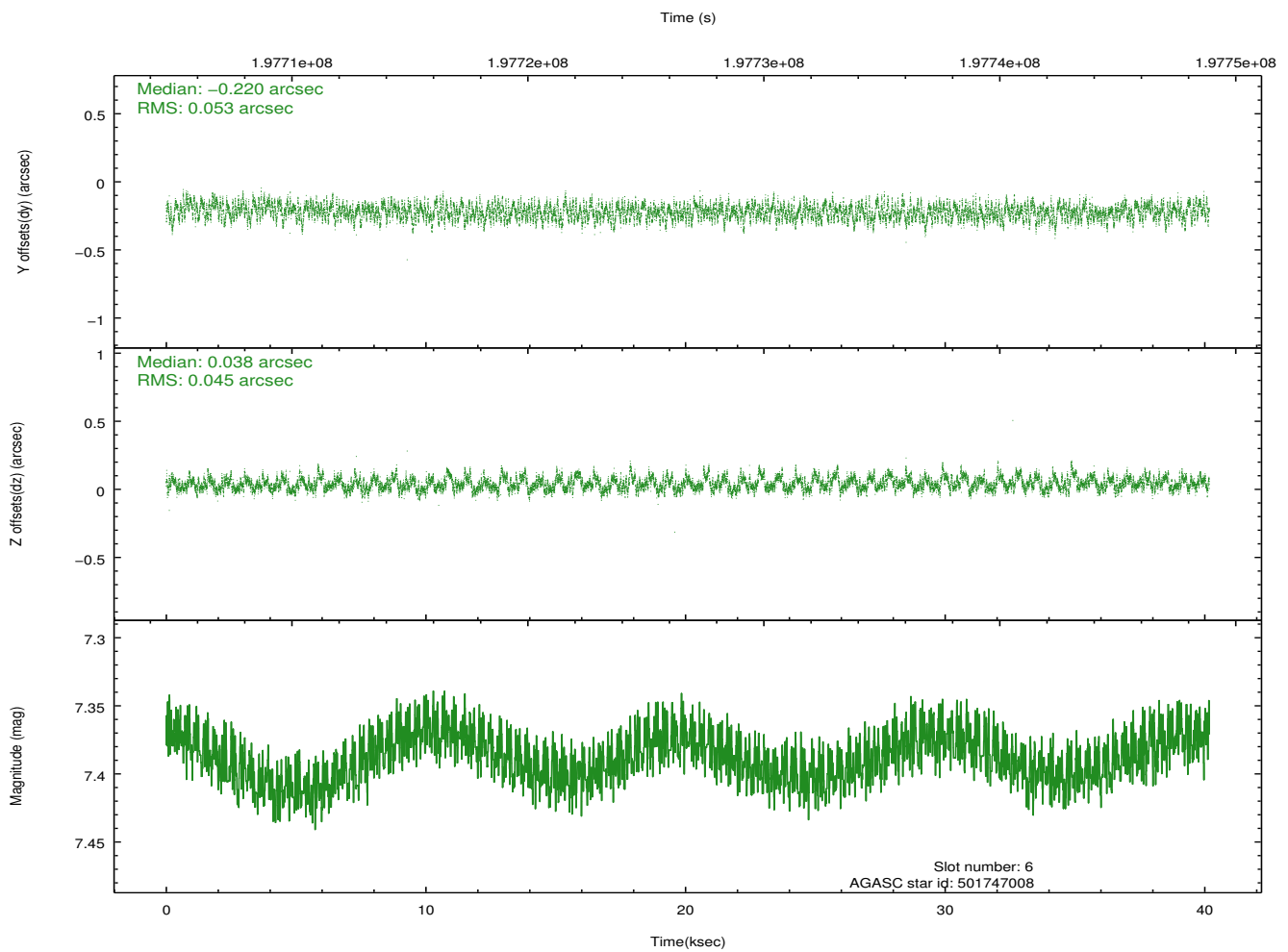
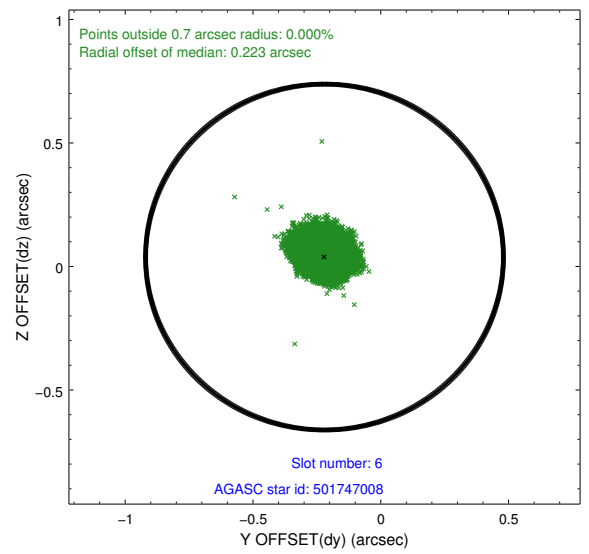
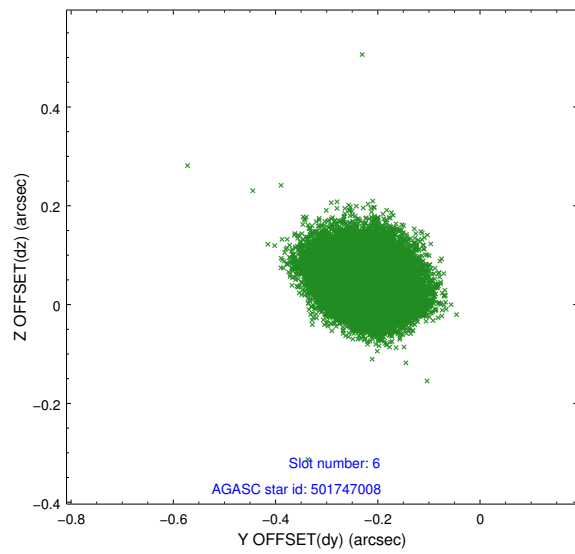
2.4.2 Slot 4



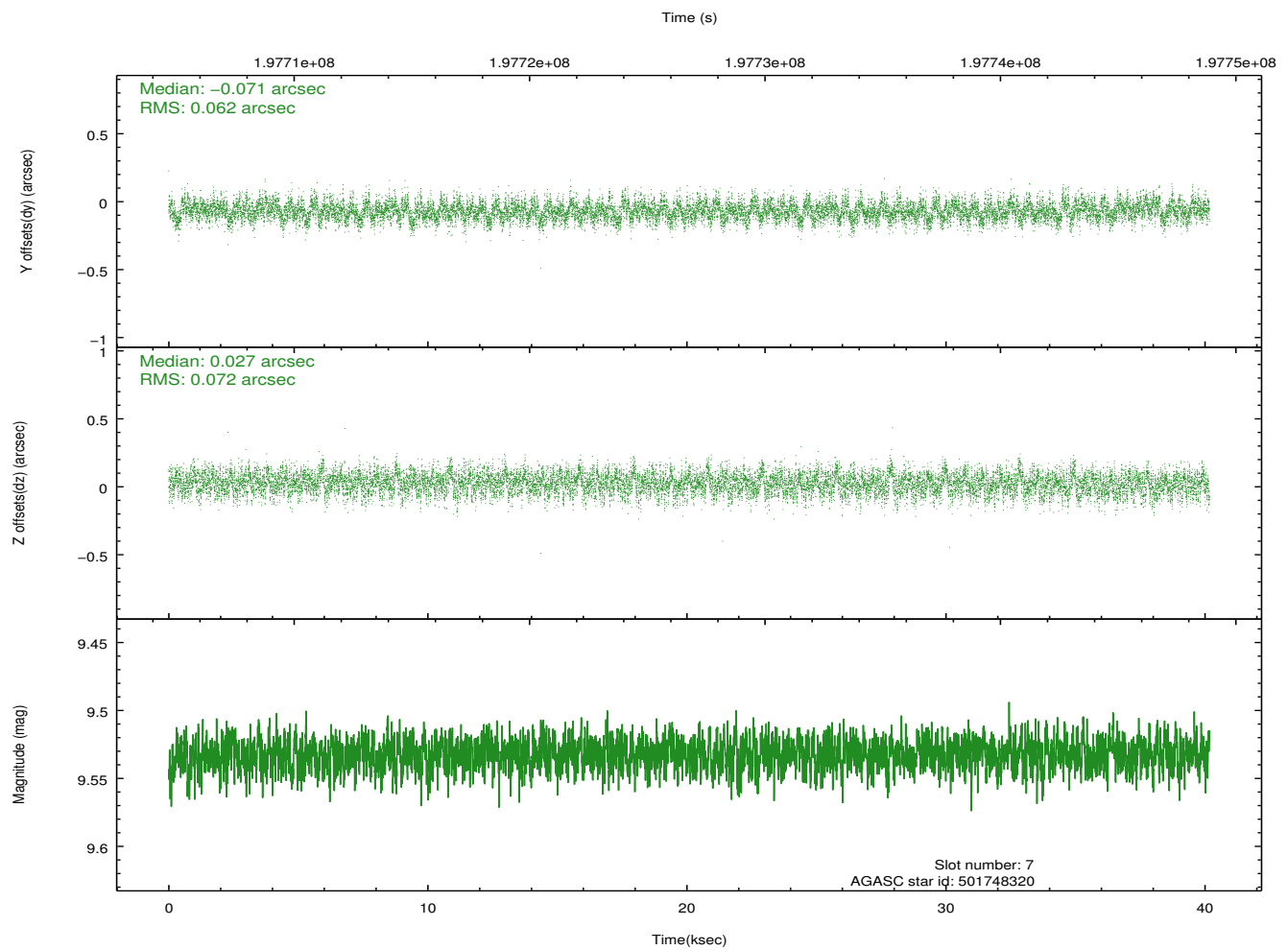
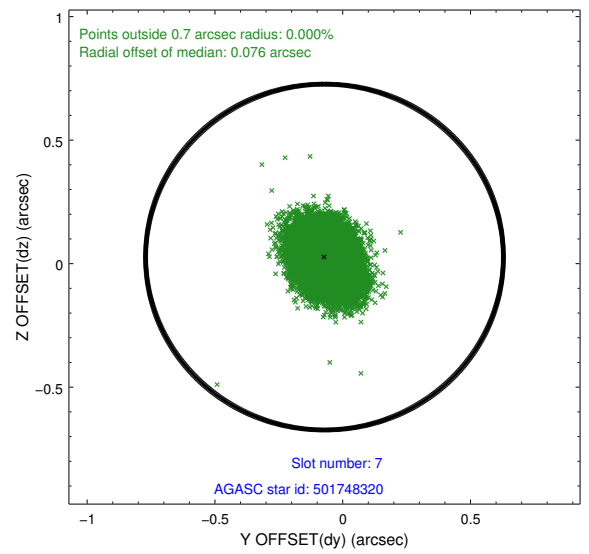
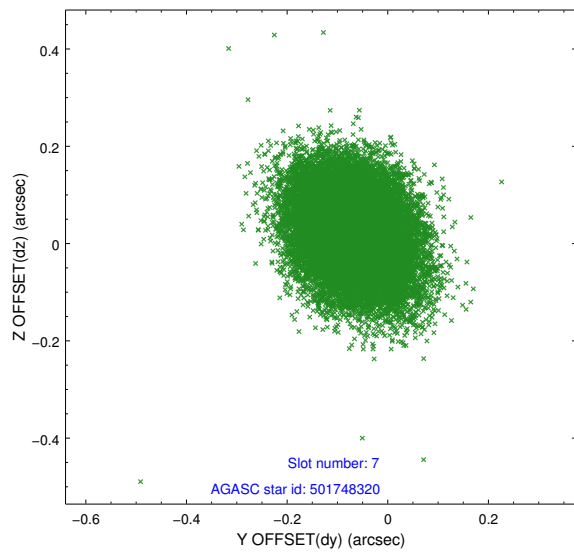
2.4.3 Slot 5



2.4.4 Slot 6

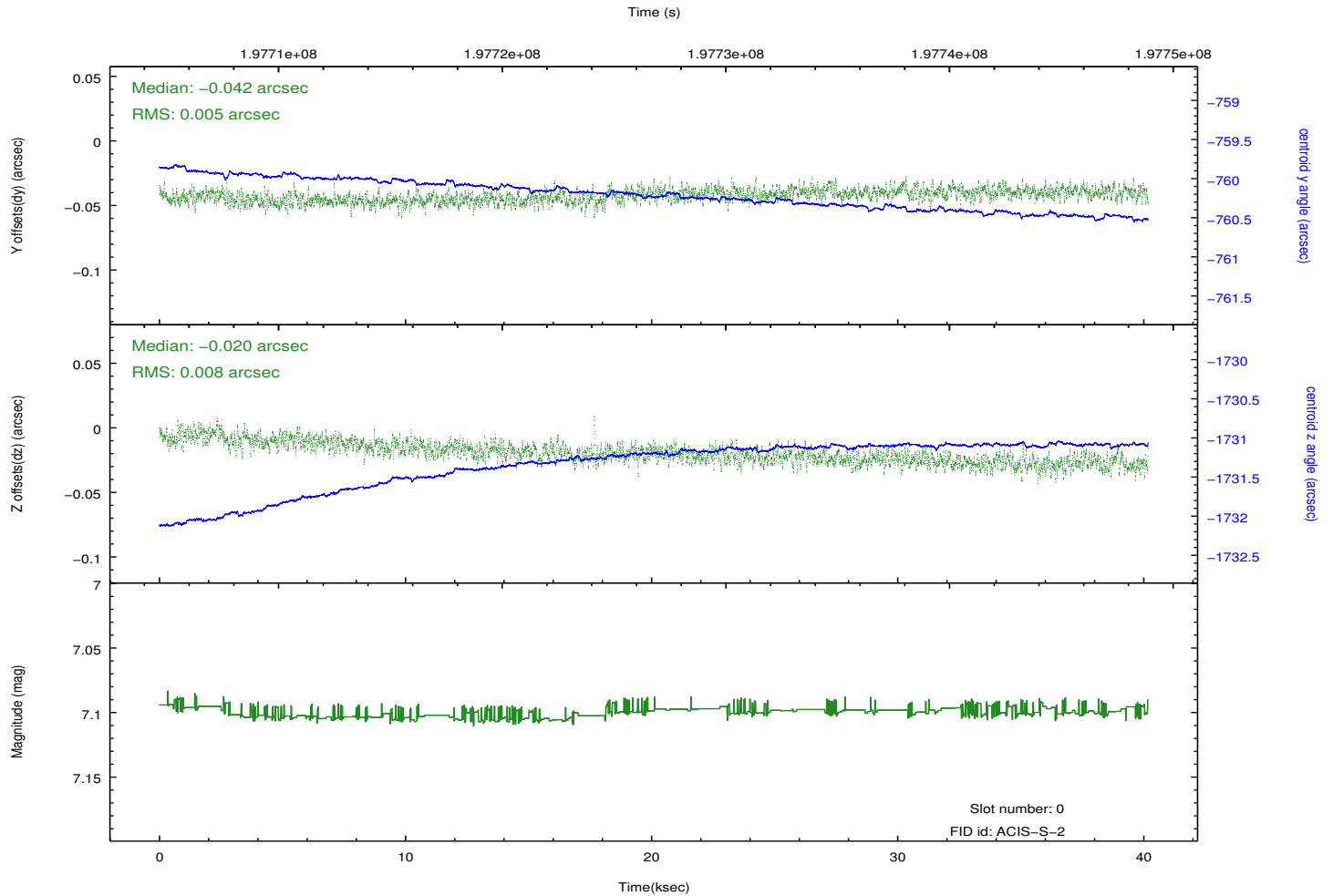
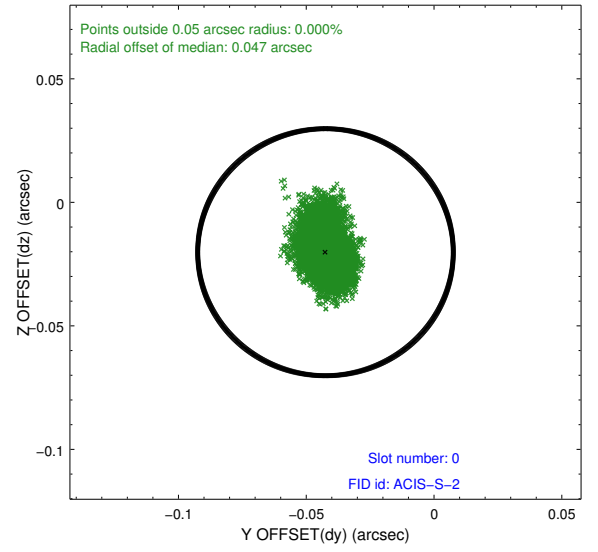
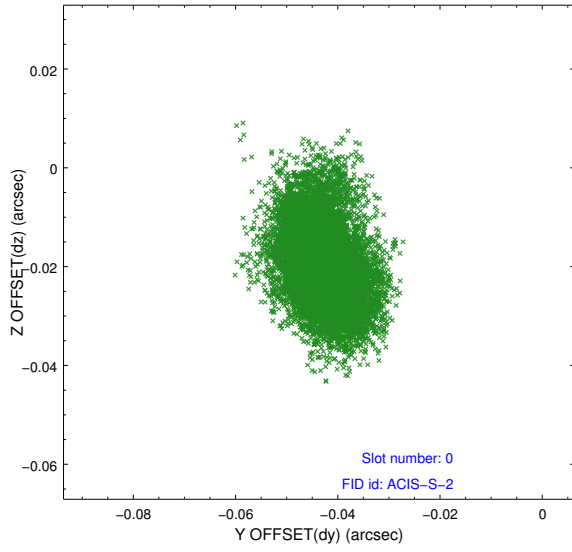


2.4.5 Slot 7

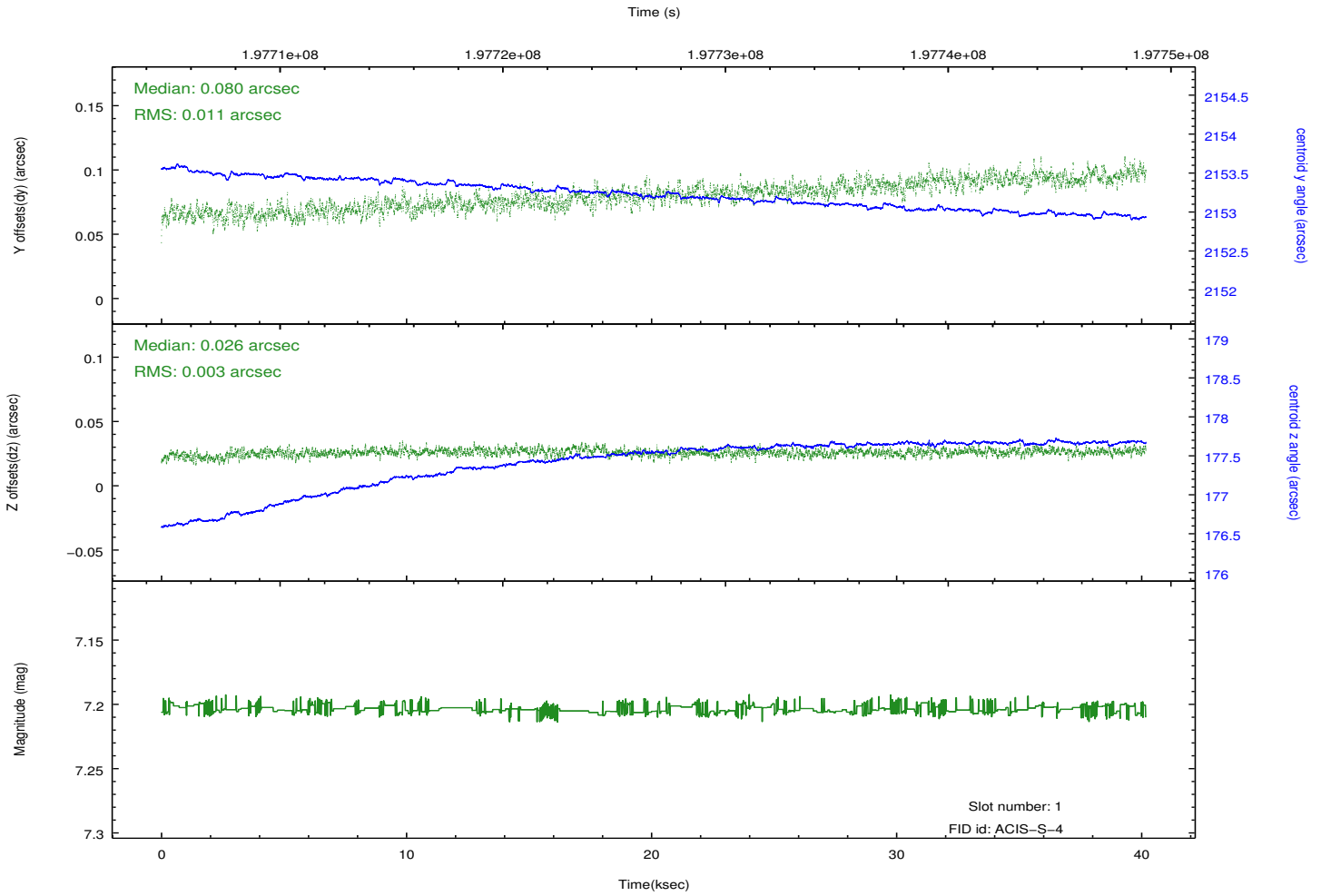
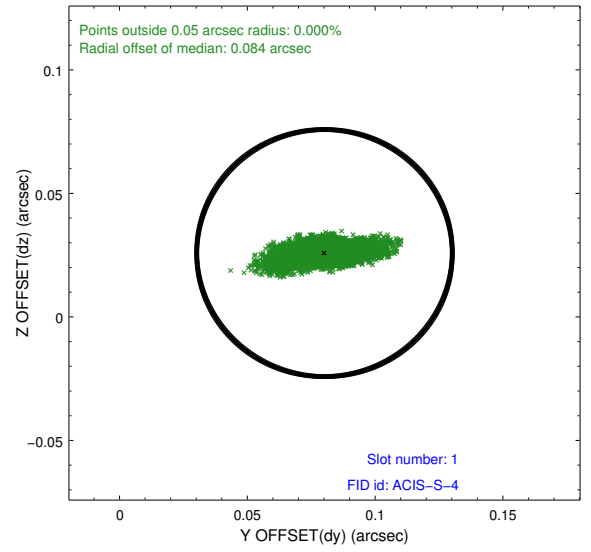
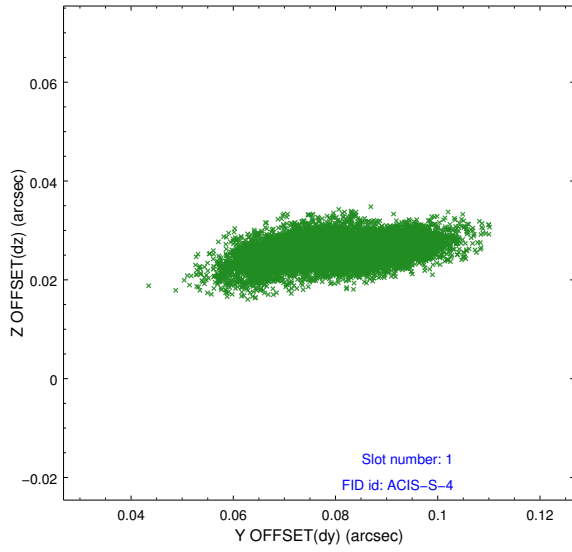


2.5 FID Slots

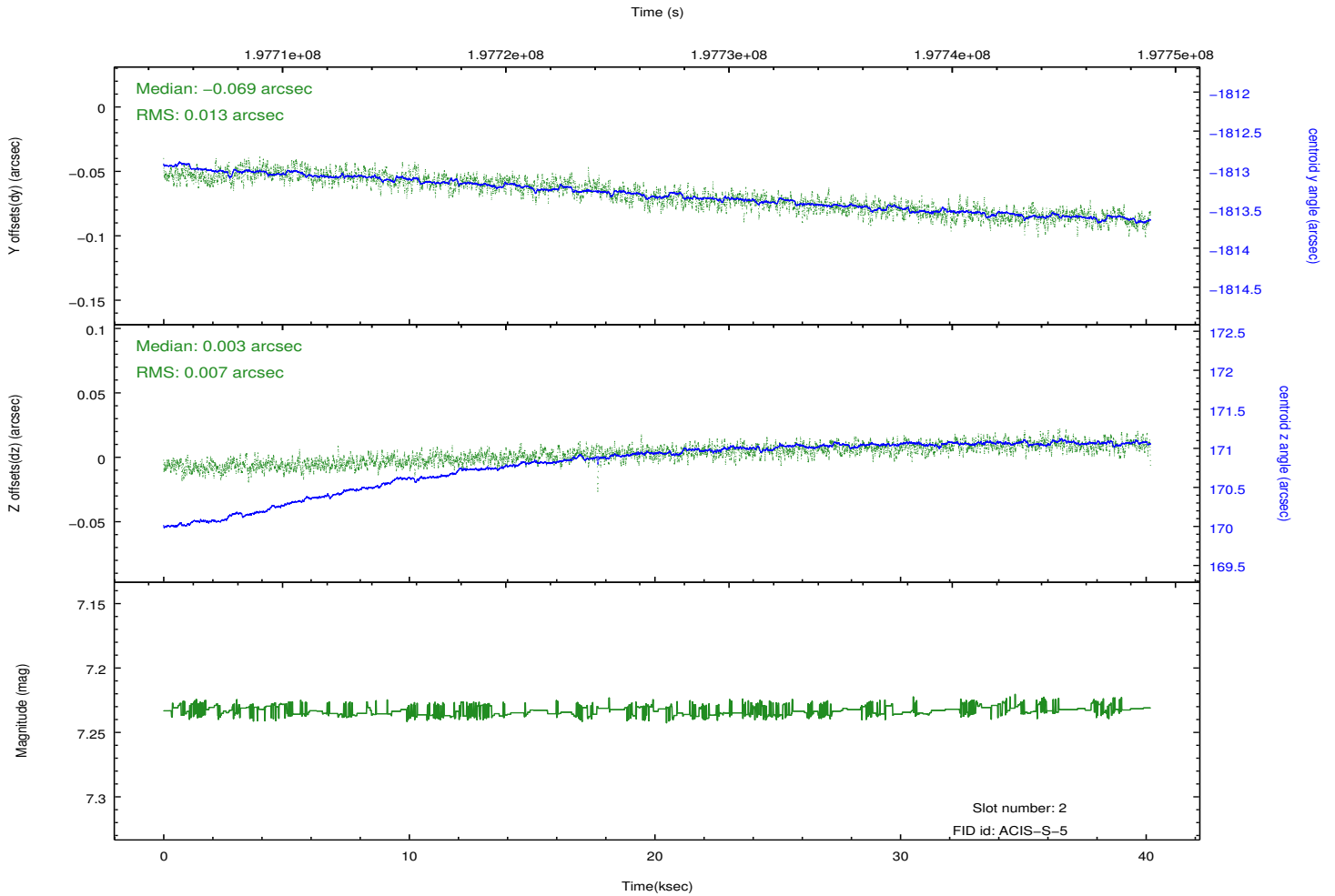
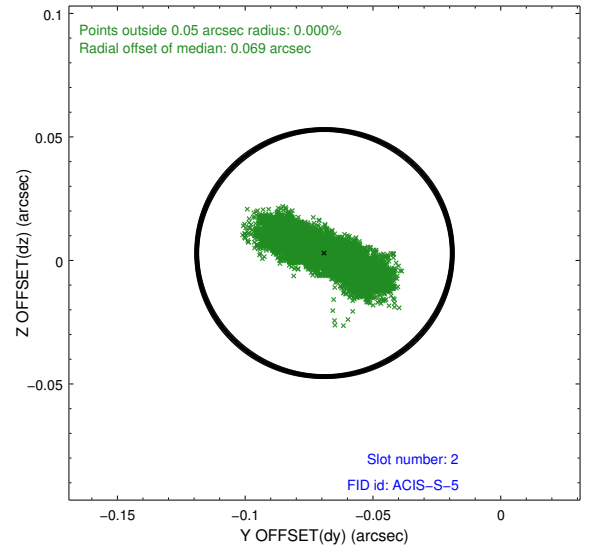
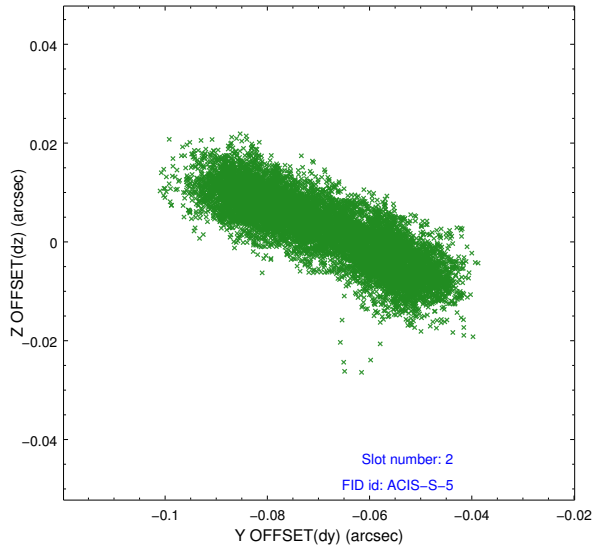
2.5.1 Slot 0



2.5.2 Slot 1



2.5.3 Slot 2



A Summary

A.1 Status

V&V Scientist	Jen Lauer
V&V Date (YYYY-MM-DD)	2012.12.14
V&V Edition	1
V&V Disposition and Status	OK
V&V Charge Time	40.172

A.2 Comments