

V&V Reference Report

L2 ASCDS Version : 8.4.5

Observation 4869 - L2 Version 3
Chandra X-Ray Center

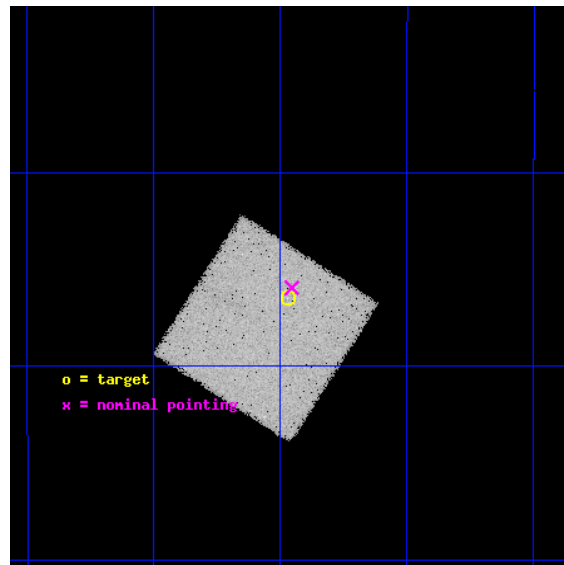
L2 Processing Date : Dec 2 2012

Contents

1	Front	2
2	OBI	3
2.1	OBI	3
2.1.1	Images	3
2.1.2	Bias	3
2.1.3	Parameters	4
2.1.4	Events	4
2.2	Compared Parameters	5
2.3	Aspect	6
2.4	Star Slots	9
2.4.1	Slot 3	9
2.4.2	Slot 4	10
2.4.3	Slot 5	11
2.4.4	Slot 6	12
2.4.5	Slot 7	13
2.5	FID Slots	14
2.5.1	Slot 0	14
2.5.2	Slot 1	15
2.5.3	Slot 2	16
A	Summary	17
A.1	Status	17
A.2	Comments	17

1 Front

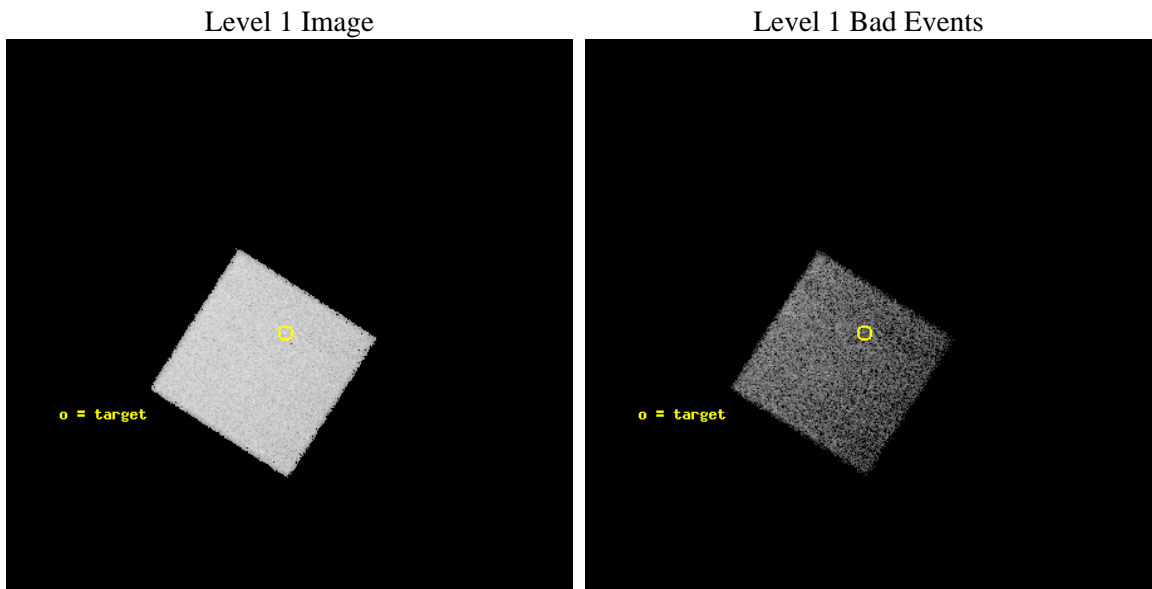
seq_num	700951	Sequence number
obs_id	4869	Observation id
title	UNCOVERING THE HIDDEN POPULATION OF BL LACS	Proposal title
observer	Dr Nicola Loaring	Principal investigator
object	2QZ J003058.2-275629	Source name
dtycycle	0	
cycle	P	events from which exps? Prim/Second/Both
ra_targ	7.742917	Observer's specified target RA [deg]
dec_targ	-27.941611	Observer's specified target Dec [deg]
ra_nom	7.7387055150822	Nominal RA [deg]
dec_nom	-27.93266968613	Nominal Dec [deg]
roll_nom	122.61108159839	Nominal Roll [deg]
revision	3	Processing version of data
ontime	14046.0	Sum of GTIs [s]
livetime	13856.443848157	Livetime [s]
ontime7	14046.0	Sum of GTIs [s]
l2events	81073	Number of level 2 events



2 OBI

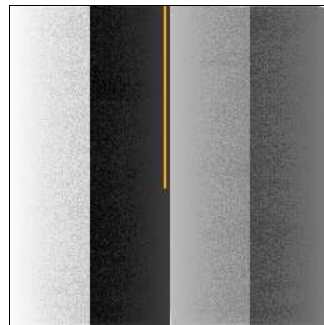
2.1 OBI

2.1.1 Images



2.1.2 Bias

Chip 7



2.1.3 Parameters

obi_num	0	Obi number	sched_exp_time	13894.473000	[s] Scheduled observation exposure time
ascdsver	8.4.5	Processing system revision	ontime	14046.0	Sum of GTIs [s]
caldbver	4.5.2	 	ontime7	14046.0	Sum of GTIs [s]
date	2012-12-02T23:05:59	Date and time of file creation	l1events	169640	Number of level 1 events
revision	3	Processing version of data			

2.1.4 Events

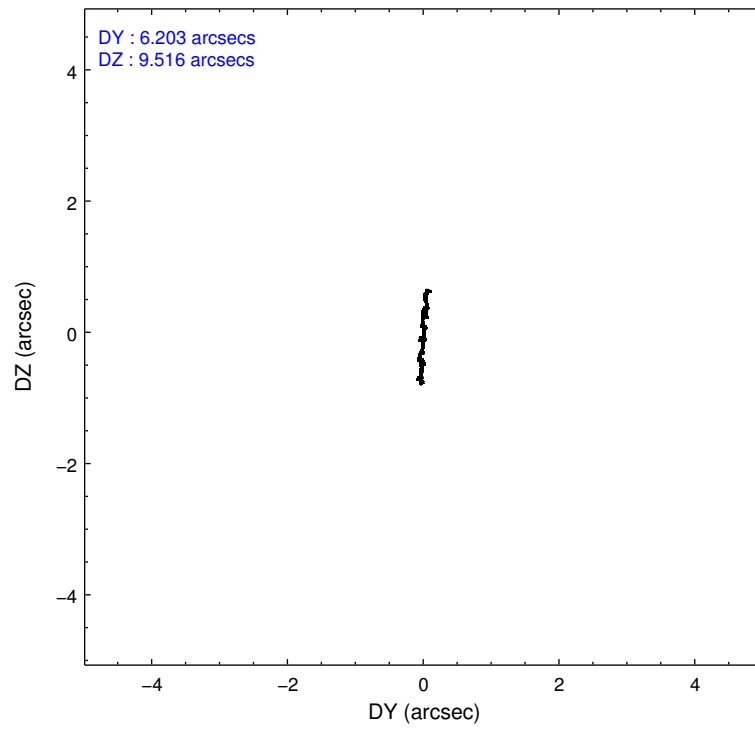
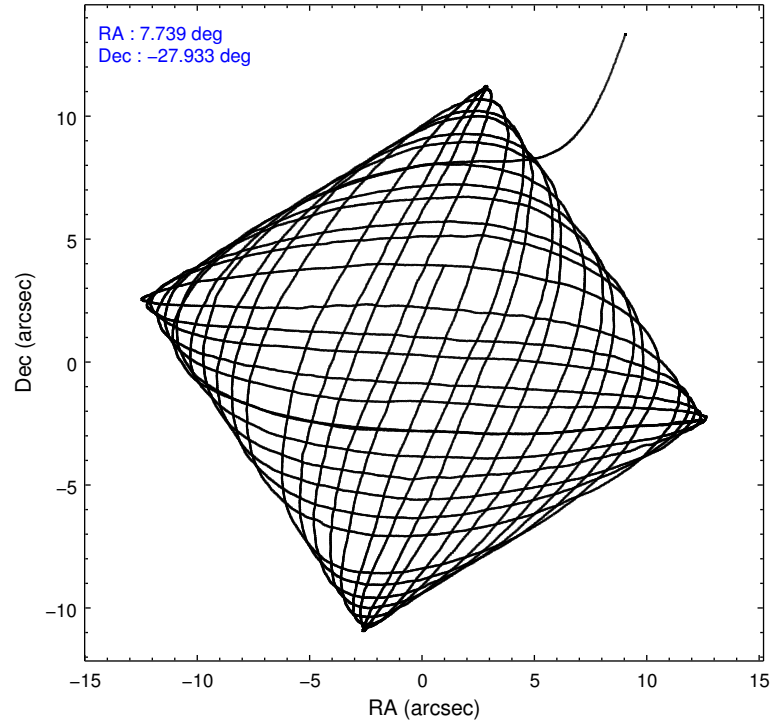
	ccd 7
level 1 events	169640
rejected events	86952
rejected %	51%

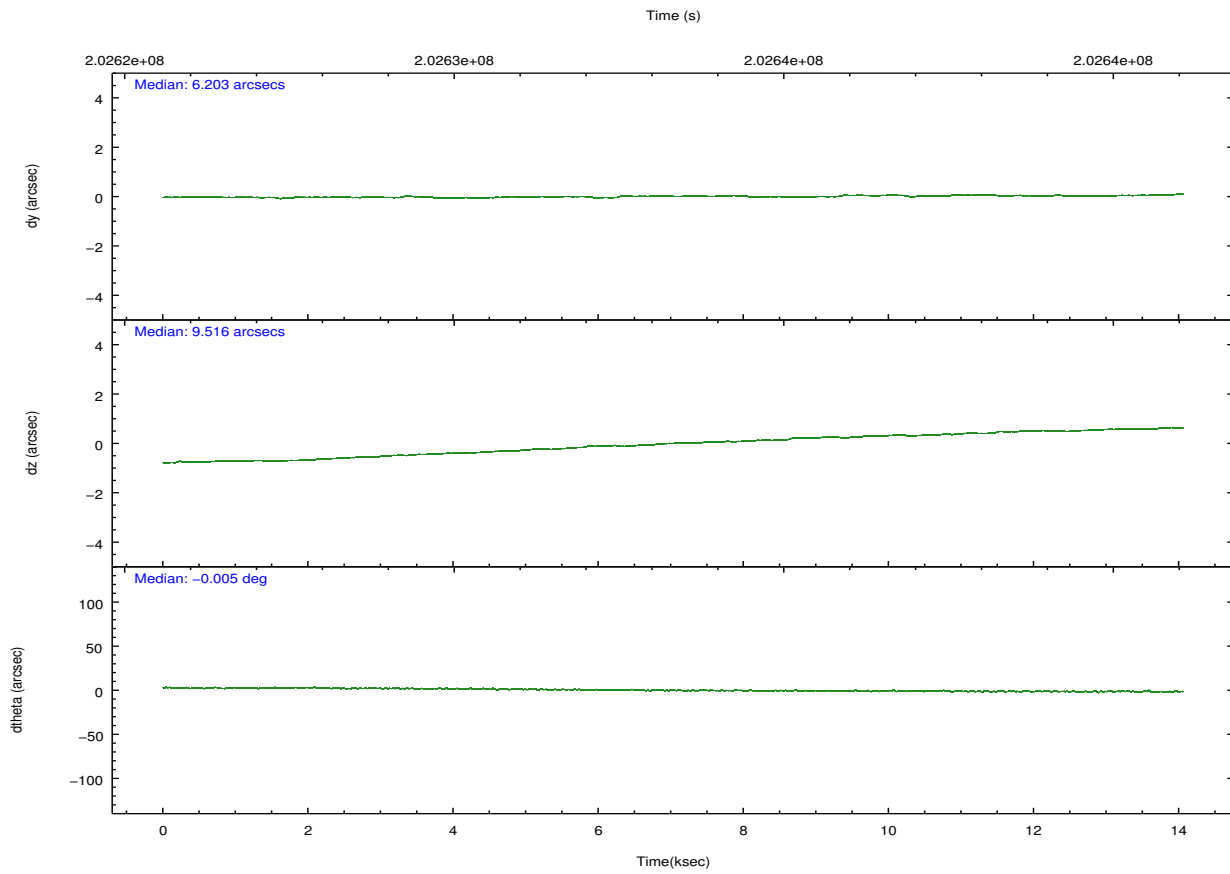
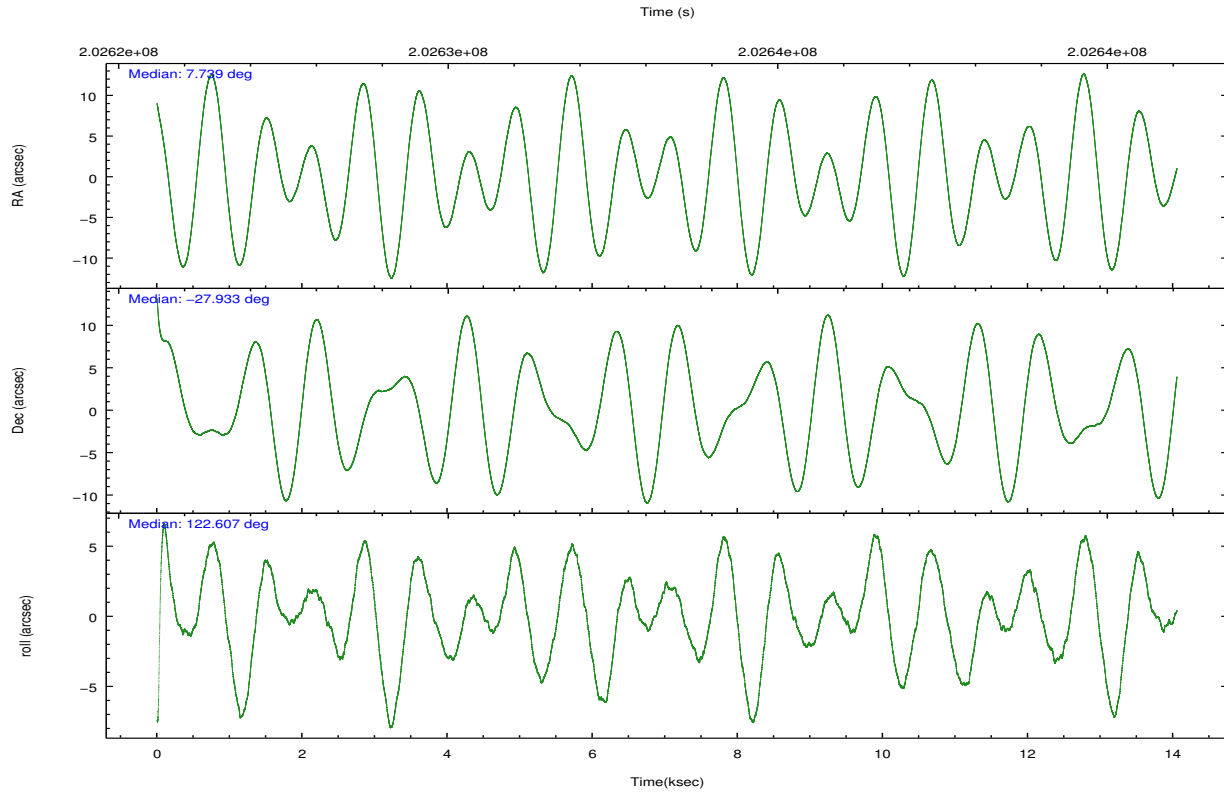
	ccd 7
grade 0 events	7833
	4%
grade 1 events	122
	0%
grade 2 events	15670
	9%
grade 3 events	6961
	4%
grade 4 events	6800
	4%
grade 5 events	13985
	8%
grade 6 events	48128
	28%
grade 7 events	70141
	41%

2.2 Compared Parameters

Parameter	Planned	Actual	Parameter	Planned	Actual
Instrument	ACIS	ACIS	Obspar format version number	7	7
Detector	ACIS-7	ACIS-7	Obspar file type	PREDICTED	ACTUAL
Grating	NONE	NONE	Obspar update status	NONE	UPDATED
Data mode	VFAINT	VFAINT	Number of optional ACIS chips dropped	0	0
Observation mode	POINTING	POINTING	On-chip summing requested	N	N
[deg] Pointing RA	7.766284	7.738705515082176	Subarray requested	NONE	NONE
[deg] Pointing Dec	-27.944878	-27.93266968612955	Alternating exposures requested	N	N
[deg] Pointing Roll	122.467393	122.6110815983891	[s] Primary exposure time	0.000000	3
[mm] SIM focus pos	-0.684267	-0.6828225247311905			
[mm] SIM defocus	0	0.001444936568705701			
[mm] SIM translation stage pos	-190.132523	-190.1400660498719			
[mm] SIM translation stage offset	0	0.00754346686406393			
[s] Observation start time (MET)	202626453.184000	202625285.68262			
Observation start date	2004-06-03T05:06:29	2004-06-03T04:48:05			
[s] Observation end time (MET)	202640348.184000	202640563.8208			
Observation end date	2004-06-03T08:58:04	2004-06-03T09:02:43			
Read mode	TIMED	TIMED			

2.3 Aspect



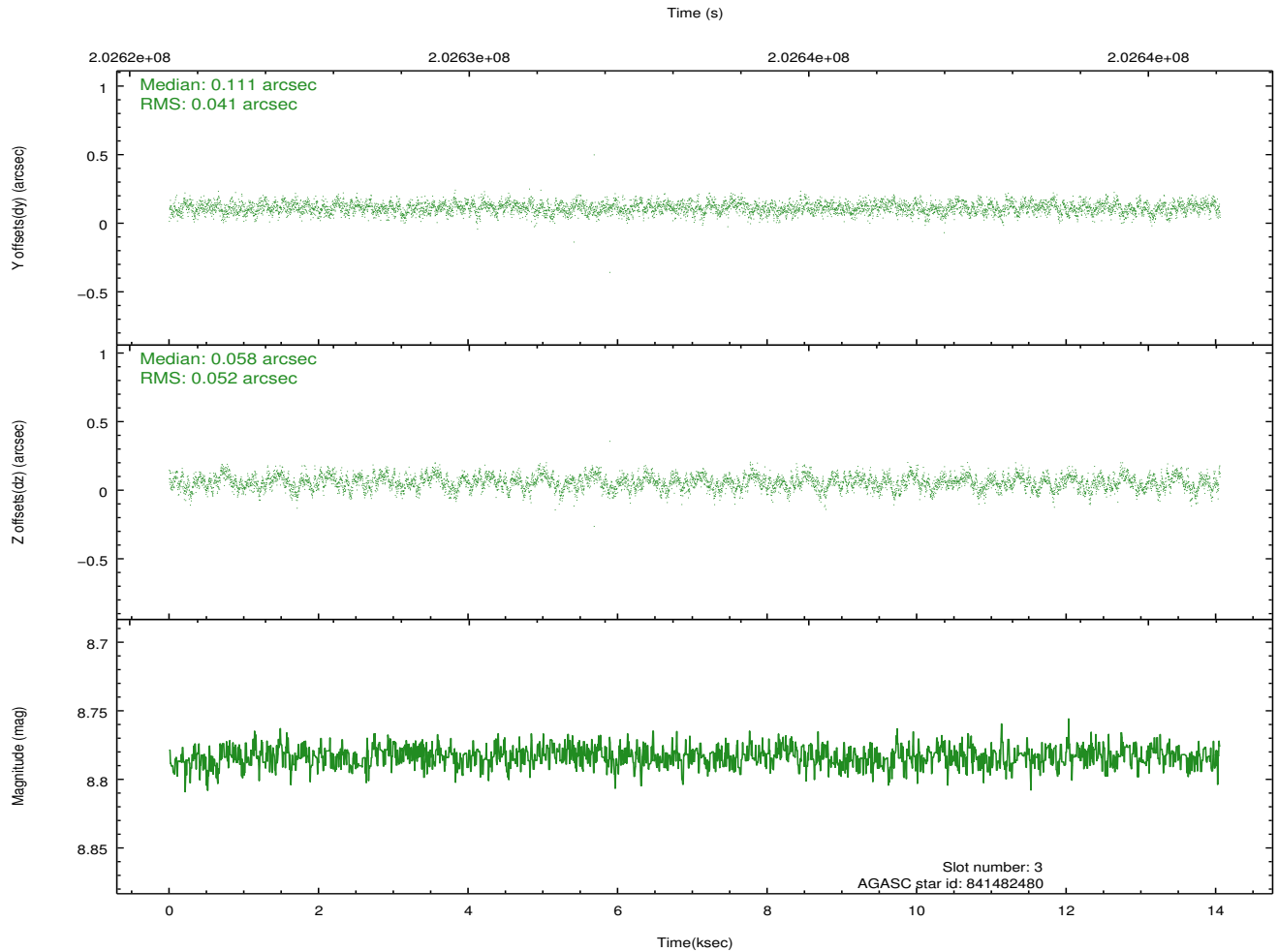
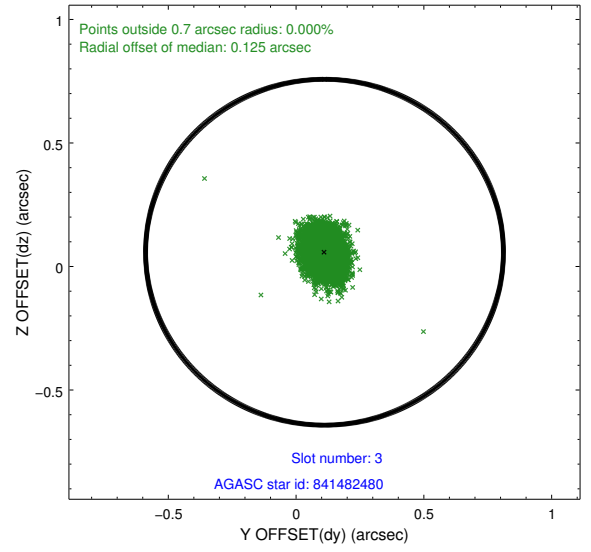
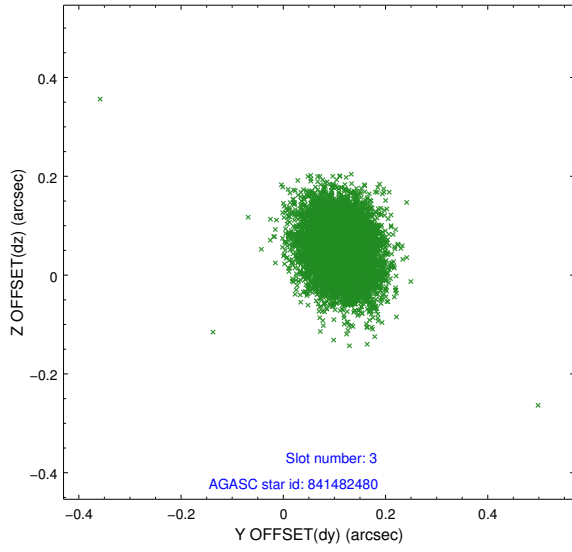


Slot Statistics

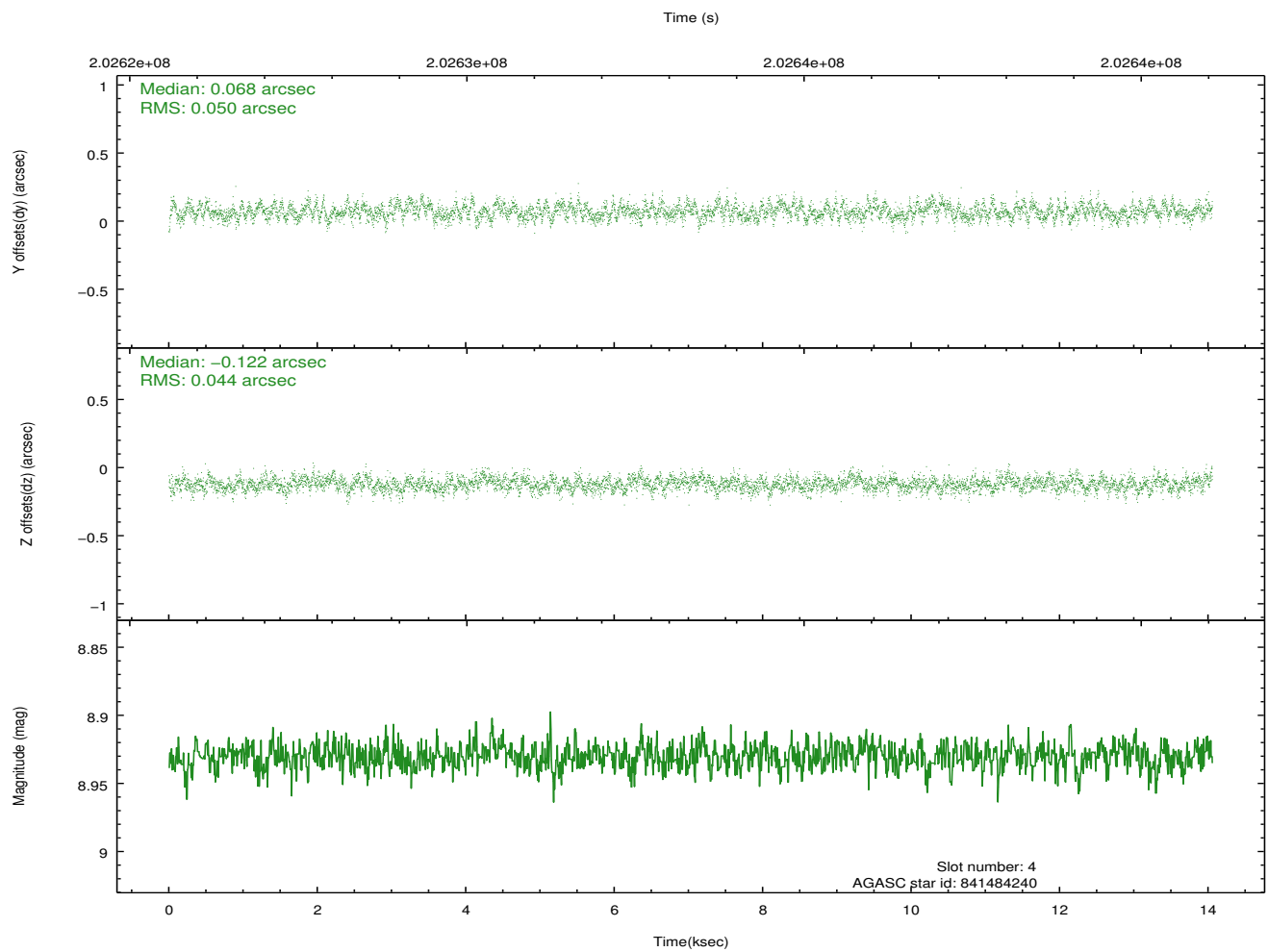
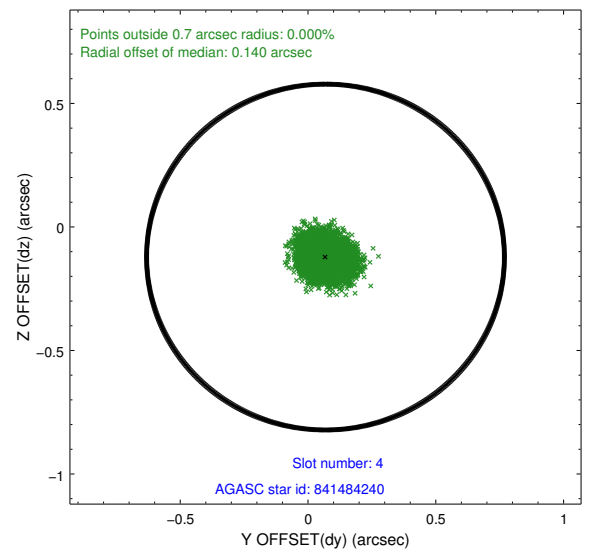
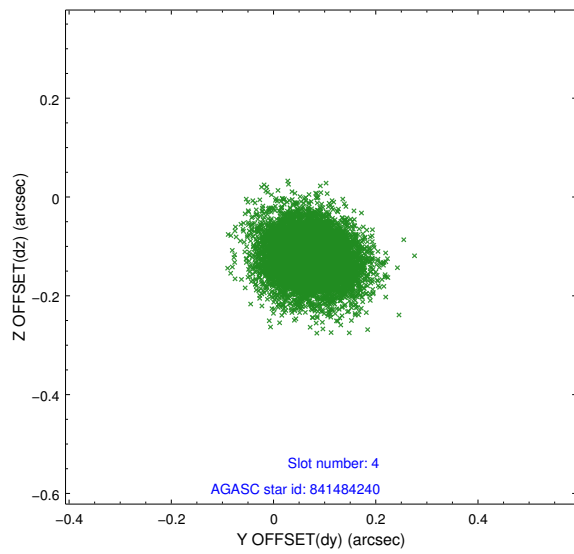
slot	status	id	mag	n_pts	med_dy	med_dz	dr1	dr2	ra	dec	mean_y	mean_z
0	FID	ACIS-S-2	7.10	3428	-0.057	-0.036	0.014	0.022	0.000000	0.000000	-758.98	-1730.74
1	FID	ACIS-S-4	7.21	3428	0.090	0.036	0.009	0.017	0.000000	0.000000	2154.28	177.49
2	FID	ACIS-S-5	7.23	3429	-0.065	0.008	0.013	0.019	0.000000	0.000000	-1811.41	171.49
3	GUIDE	841482480	8.78	6852	0.111	0.058	0.069	0.113	8.306502	-28.375543	-2229.66	-609.29
4	GUIDE	841484240	8.93	6856	0.068	-0.122	0.071	0.114	7.658873	-28.536301	-1614.55	1429.54
5	GUIDE	841487336	8.53	6854	-0.017	-0.093	0.058	0.093	7.660145	-27.935225	210.17	266.58
6	GUIDE	841879040	9.45	6851	0.083	0.301	0.090	0.153	8.674002	-28.045385	-1862.28	-2232.93
7	GUIDE	841487512	9.17	6848	-0.246	-0.143	0.082	0.130	6.983954	-27.971108	1248.27	2153.49

2.4 Star Slots

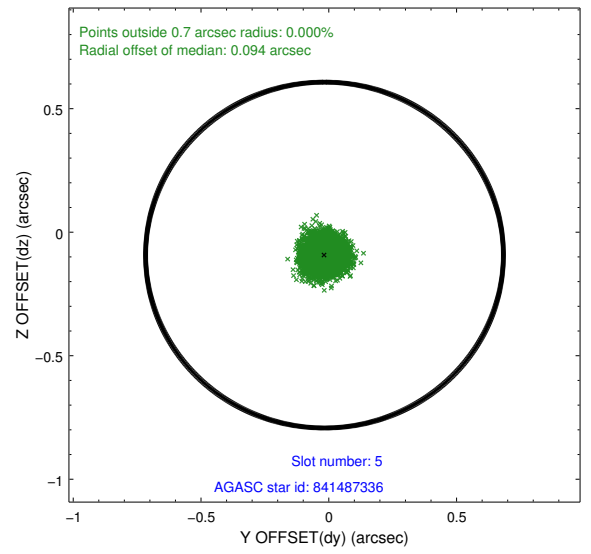
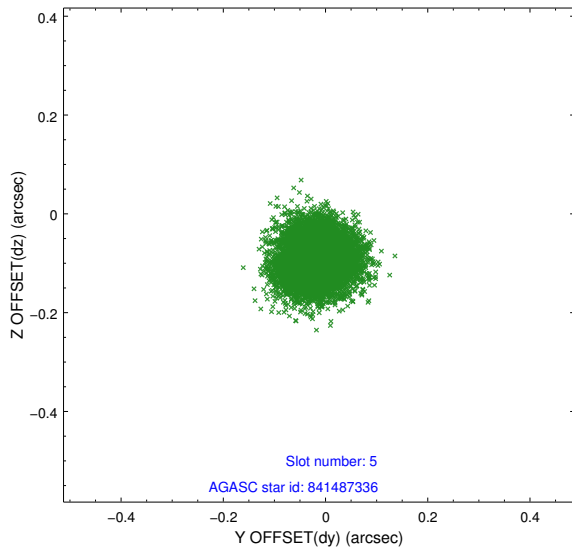
2.4.1 Slot 3



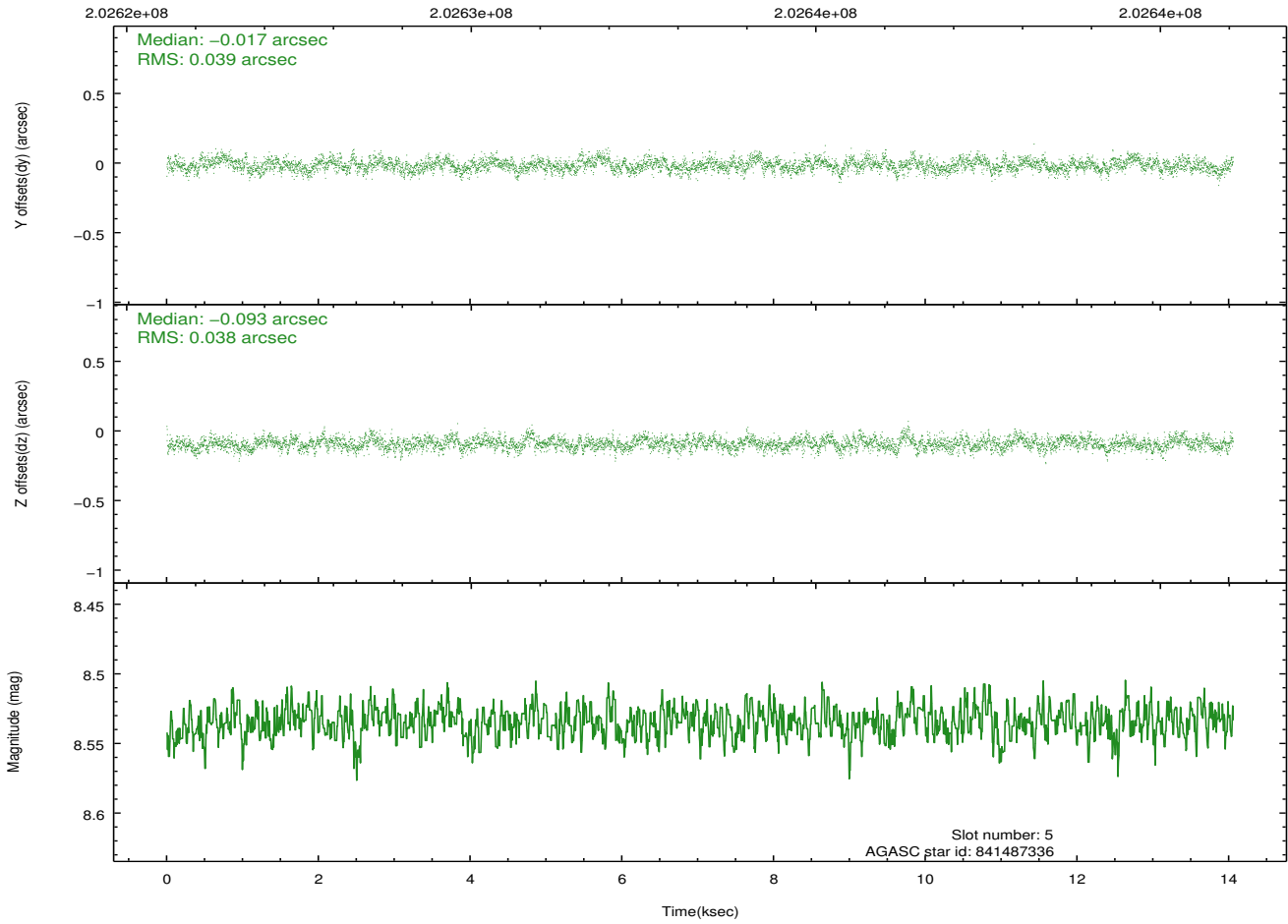
2.4.2 Slot 4



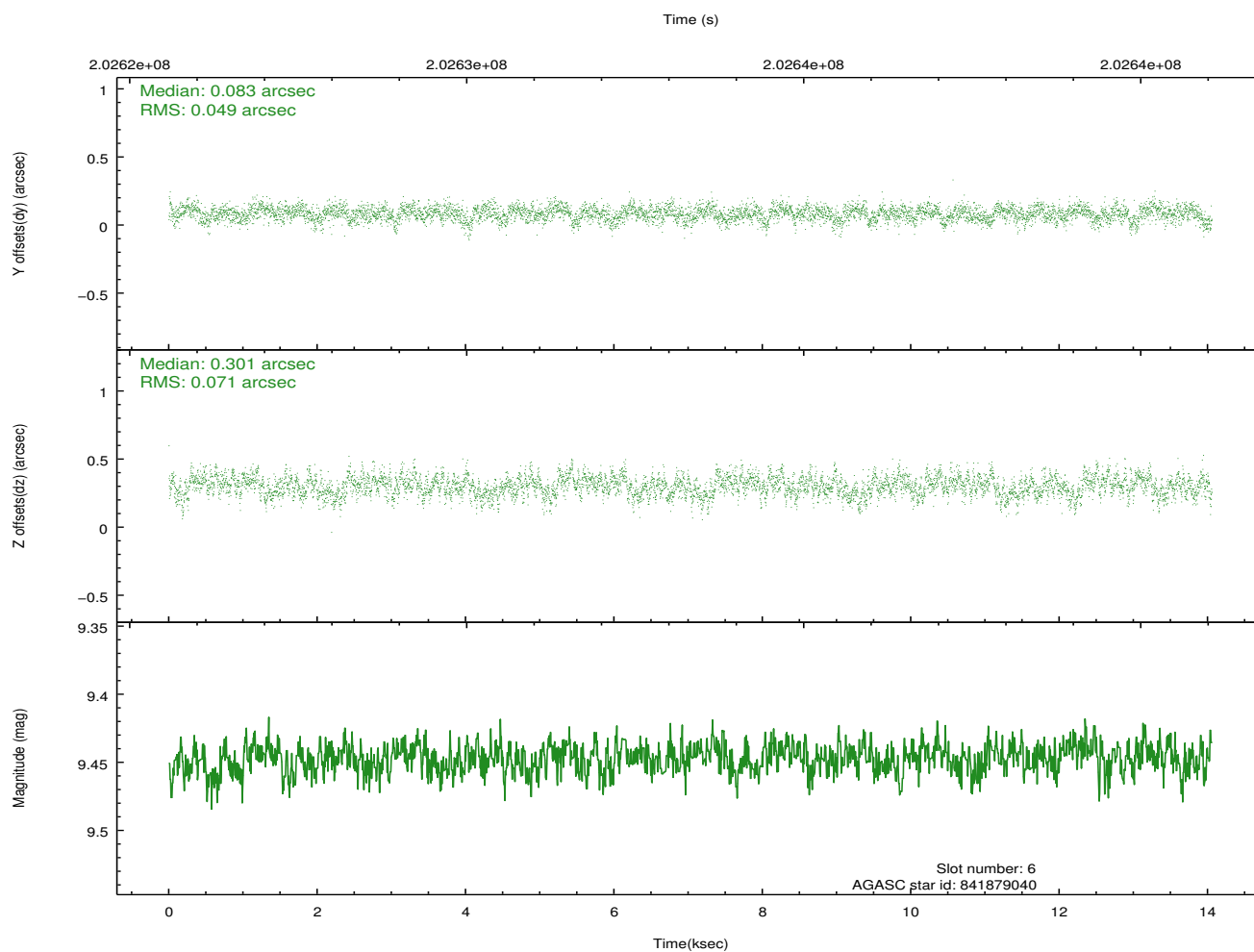
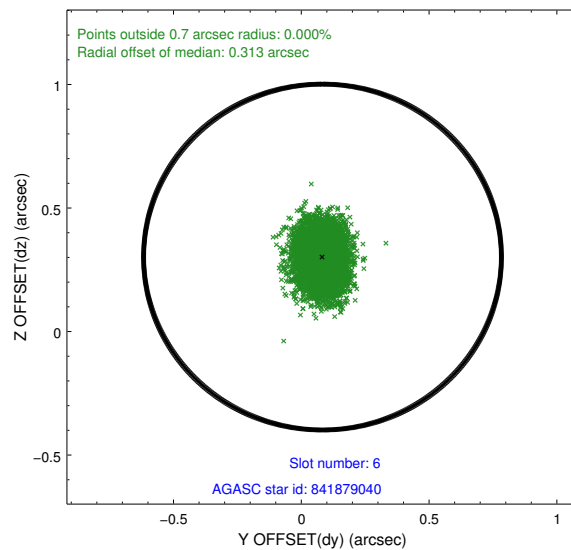
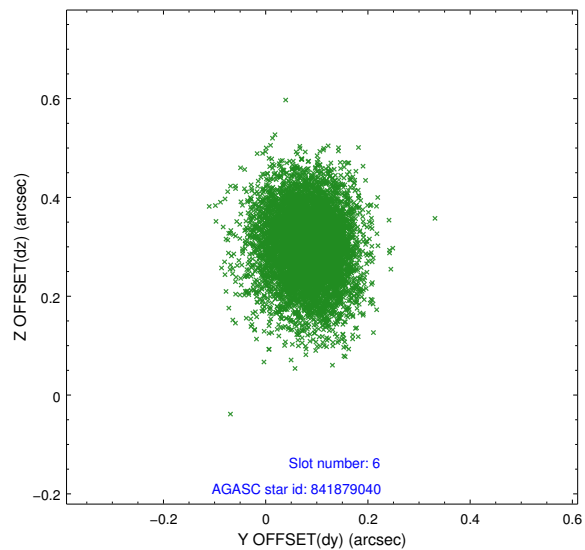
2.4.3 Slot 5



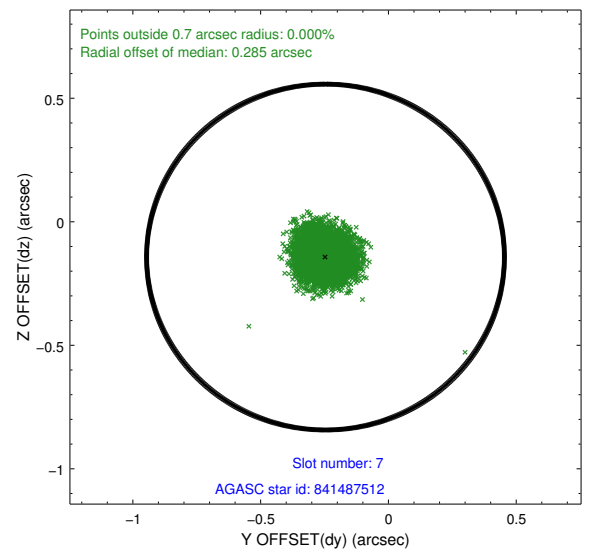
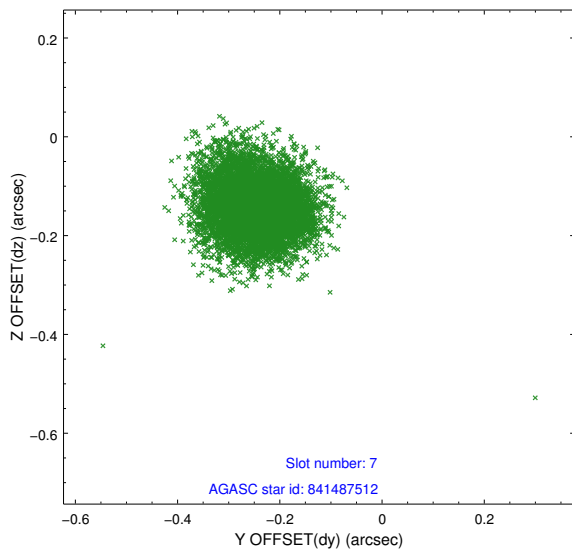
Time (s)



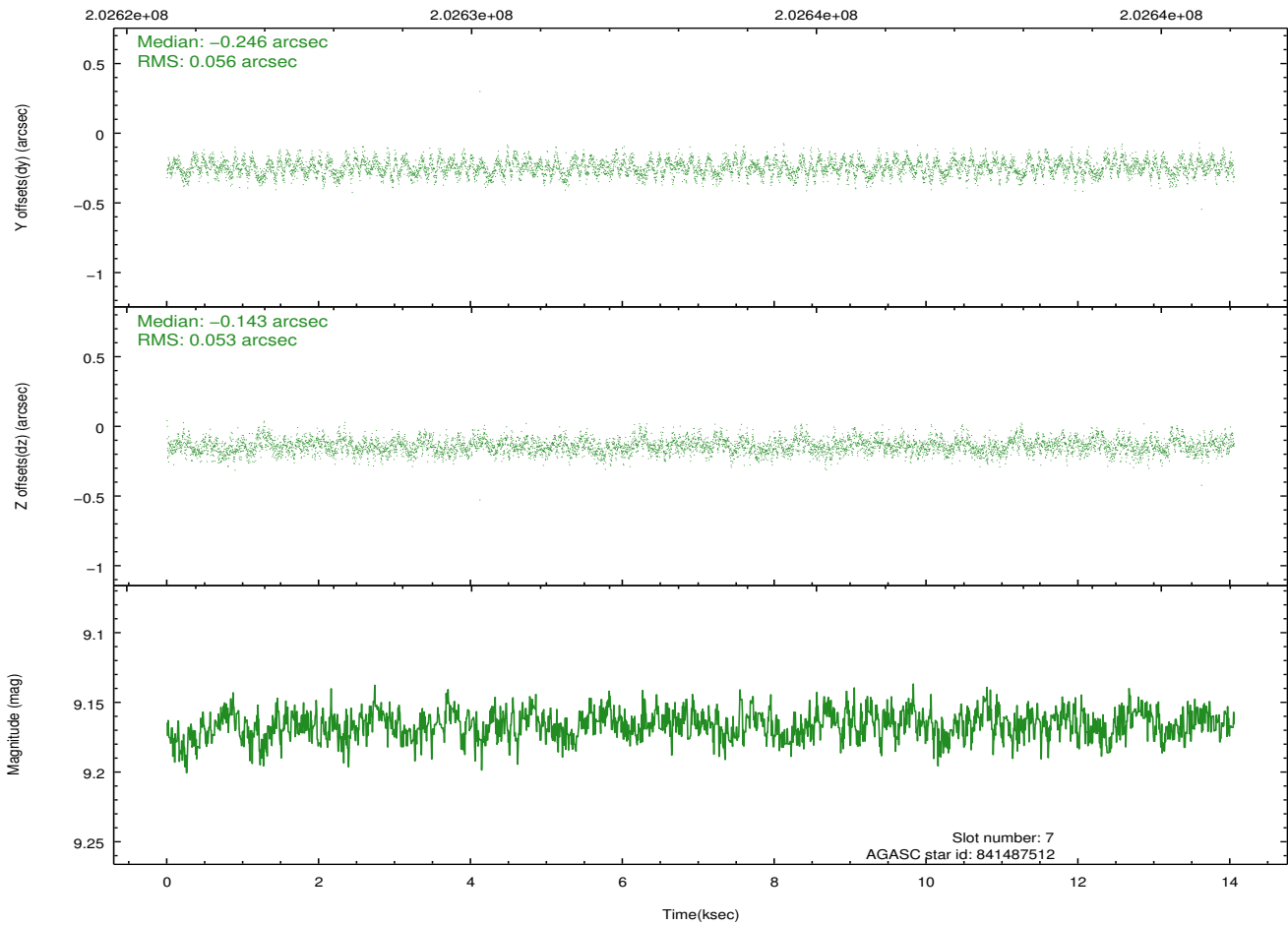
2.4.4 Slot 6



2.4.5 Slot 7

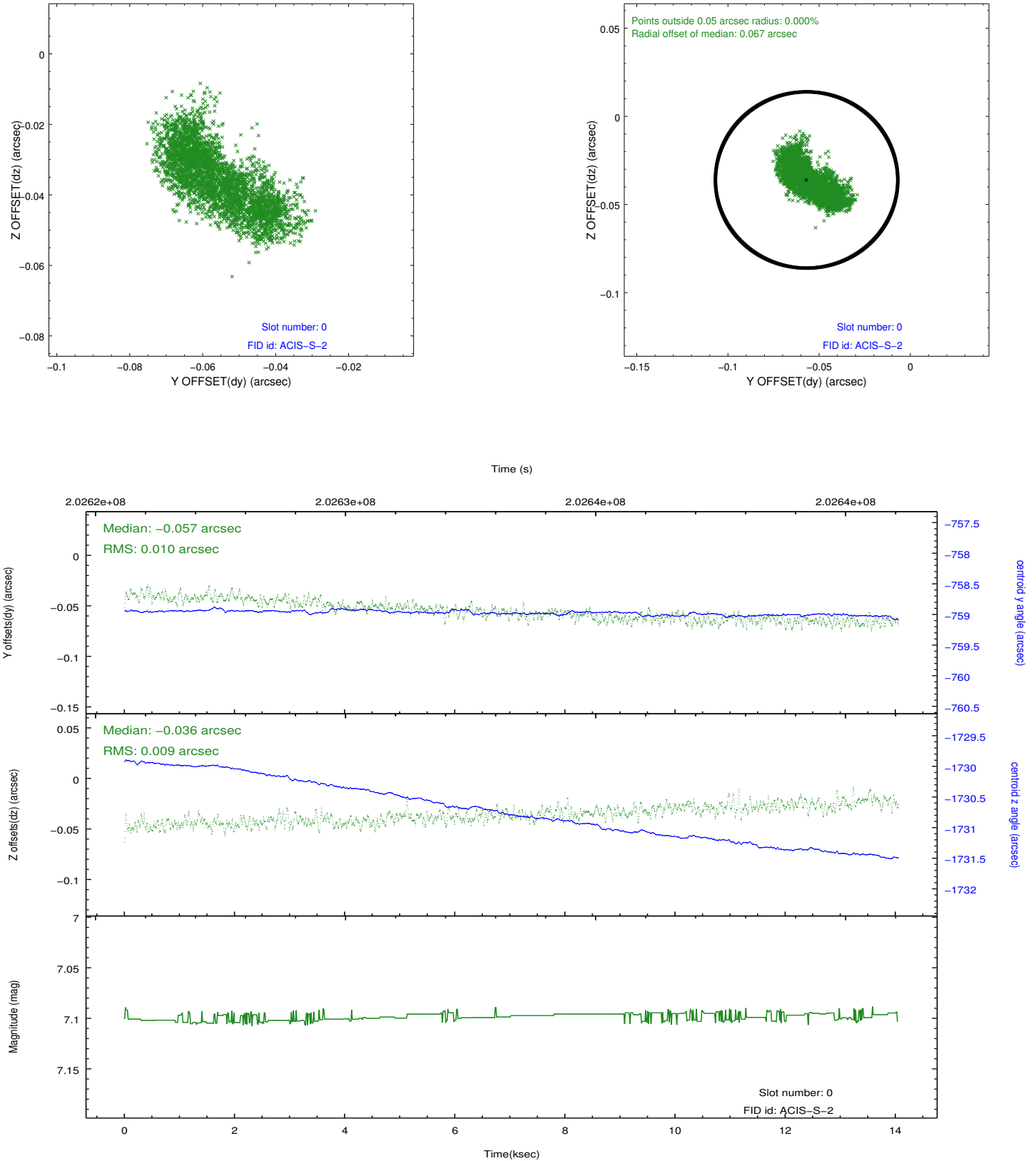


Time (s)

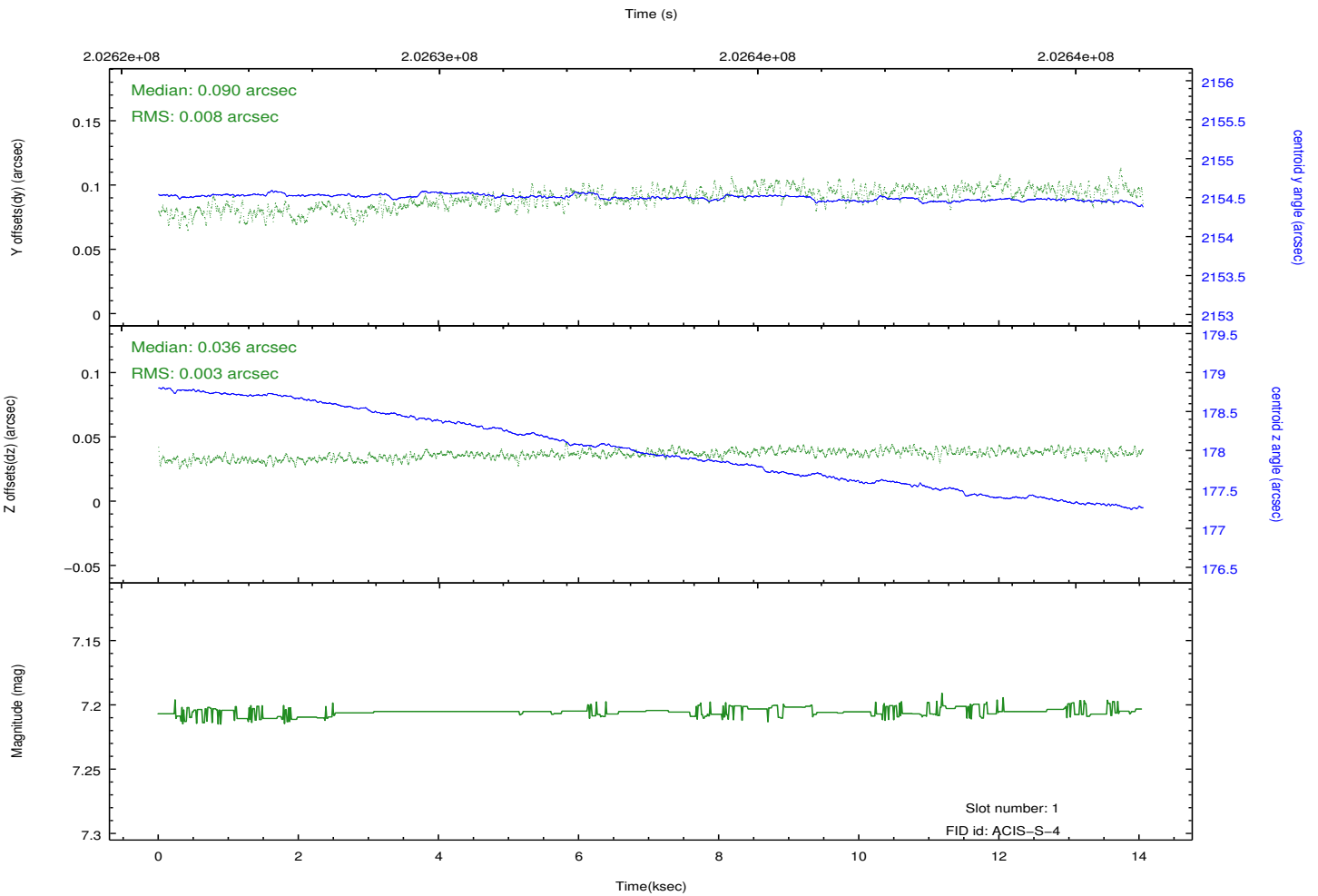
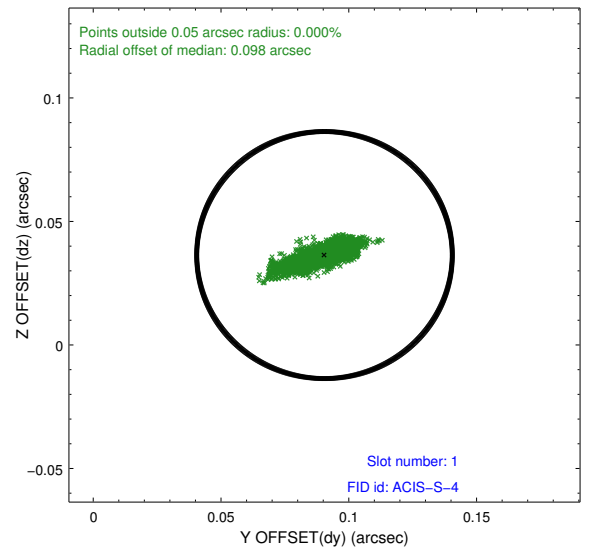
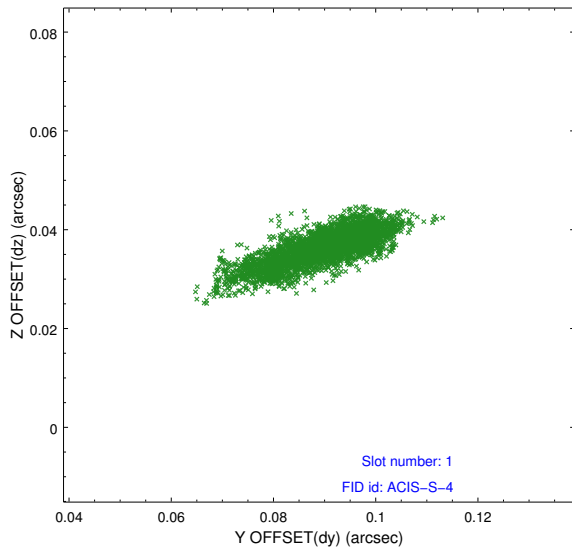


2.5 FID Slots

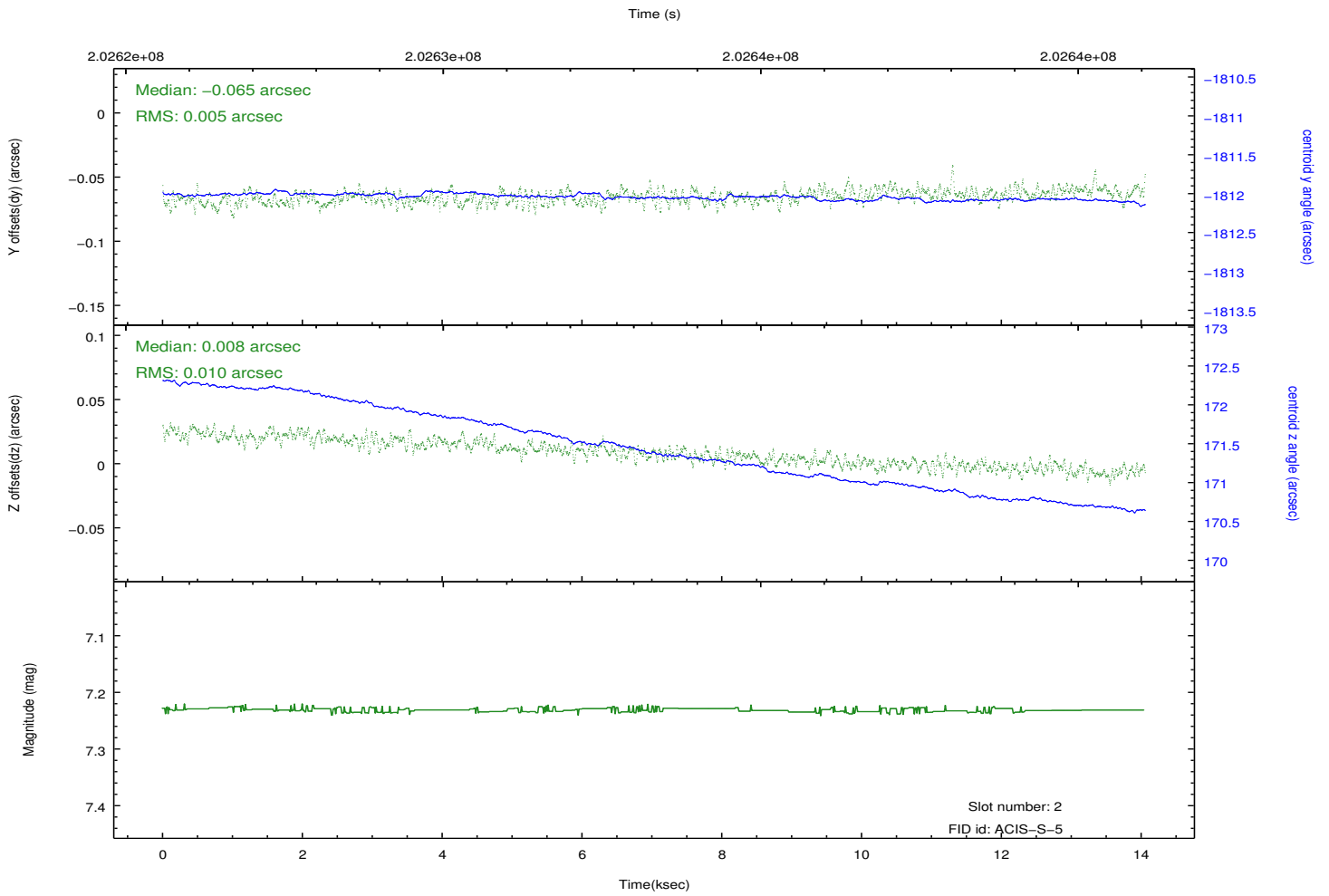
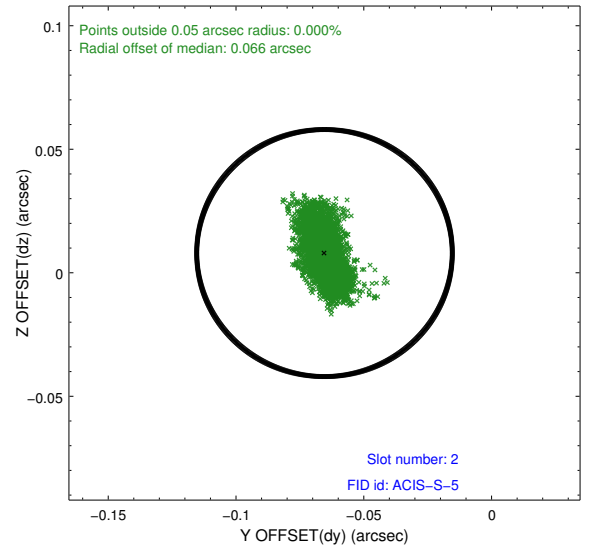
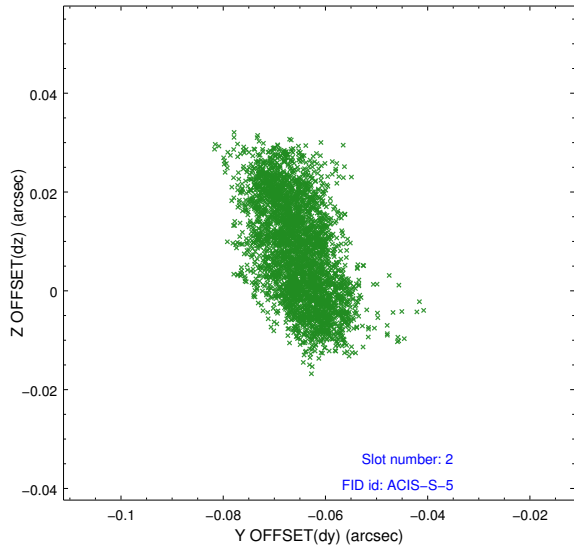
2.5.1 Slot 0



2.5.2 Slot 1



2.5.3 Slot 2



A Summary

A.1 Status

V&V Scientist	Beth Sundheim
V&V Date (YYYY-MM-DD)	2012.12.14
V&V Edition	1
V&V Disposition and Status	OK
V&V Charge Time	14.046

A.2 Comments