

V&V Reference Report

L2 ASCDS Version : 8.5

Observation 4879 - L2 Version 3
Chandra X-Ray Center

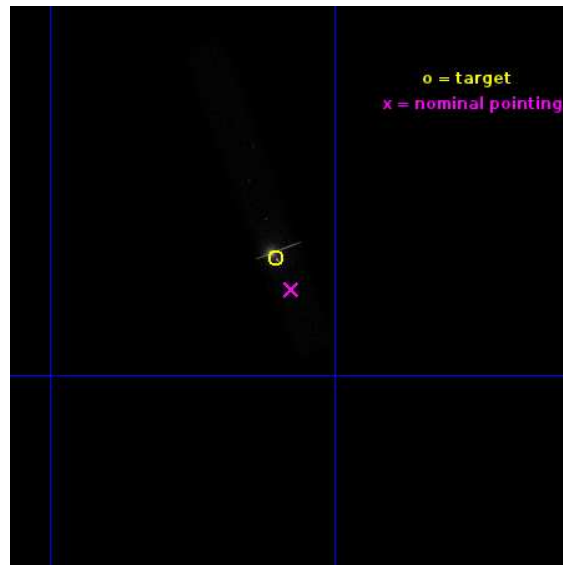
L2 Processing Date : Dec 6 2012

Contents

1	Front	2
2	OBI	3
2.1	OBI	3
2.1.1	Images	3
2.1.2	Bias	3
2.1.3	Parameters	4
2.1.4	Events	4
2.2	Compared Parameters	5
2.3	Aspect	6
2.4	Star Slots	9
2.4.1	Slot 3	9
2.4.2	Slot 4	10
2.4.3	Slot 5	11
2.4.4	Slot 6	12
2.4.5	Slot 7	13
2.5	FID Slots	14
2.5.1	Slot 0	14
2.5.2	Slot 1	15
2.5.3	Slot 2	16
A	Summary	17
A.1	Status	17
A.2	Comments	17

1 Front

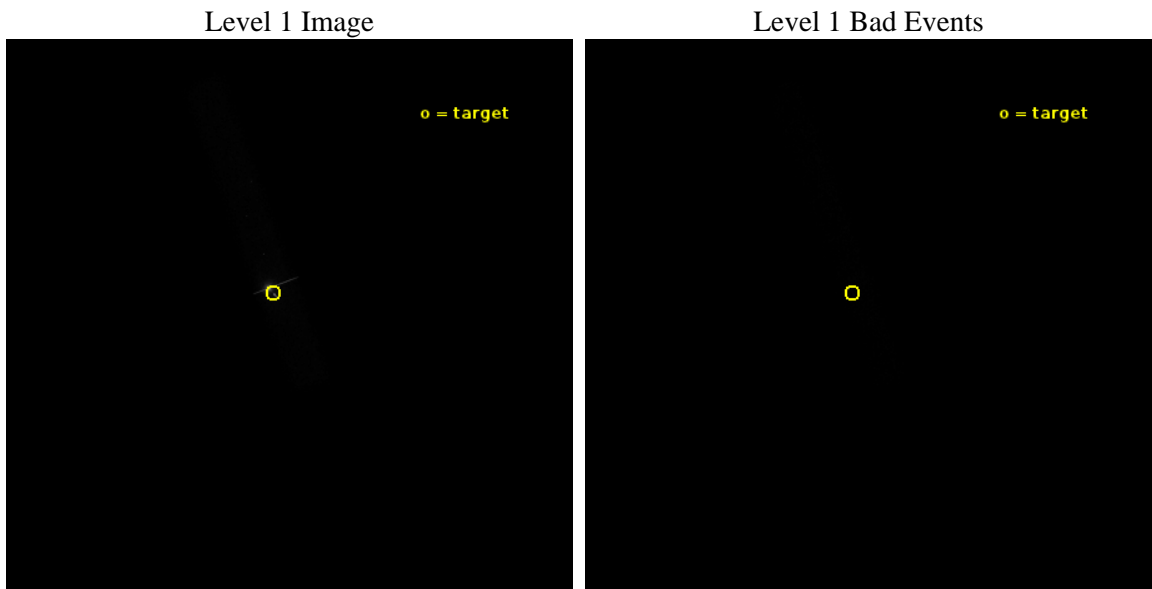
seq_num	700961	Sequence number
obs_id	4879	Observation id
title	The X-ray emission mechanism in 3C273's jet	Proposal title
observer	Dr. Sebastian Jester	Principal investigator
object	3C273-JET	Source name
dtycycle	0	
cycle	P	events from which exps? Prim/Second/Both
ra_targ	187.275833	Observer's specified target RA [deg]
dec_targ	2.050111	Observer's specified target Dec [deg]
ra_nom	187.26896685017	Nominal RA [deg]
dec_nom	2.036614653822	Nominal Dec [deg]
roll_nom	249.57144065154	Nominal Roll [deg]
revision	3	Processing version of data
ontime	39234.000584602	Sum of GTIs [s]
livetime	35583.167589881	Livetime [s]
ontime7	39234.000584602	Sum of GTIs [s]
l2events	102993	Number of level 2 events



2 OBI

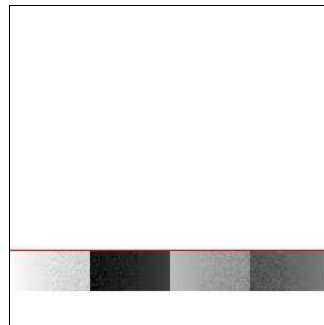
2.1 OBI

2.1.1 Images



2.1.2 Bias

Chip 7



2.1.3 Parameters

obi_num	2	Obi number	sched_exp_time	39060.000000	[s] Scheduled observation exposure time
ascdsver	8.5	Processing system revision	ontime	39234.000584602	Sum of GTIs [s]
caldbver	4.5.4	 	ontime7	39234.000584602	Sum of GTIs [s]
date	2012-12-06T12:27:42	Date and time of file creation	l1events	208115	Number of level 1 events
revision	3	Processing version of data			

2.1.4 Events

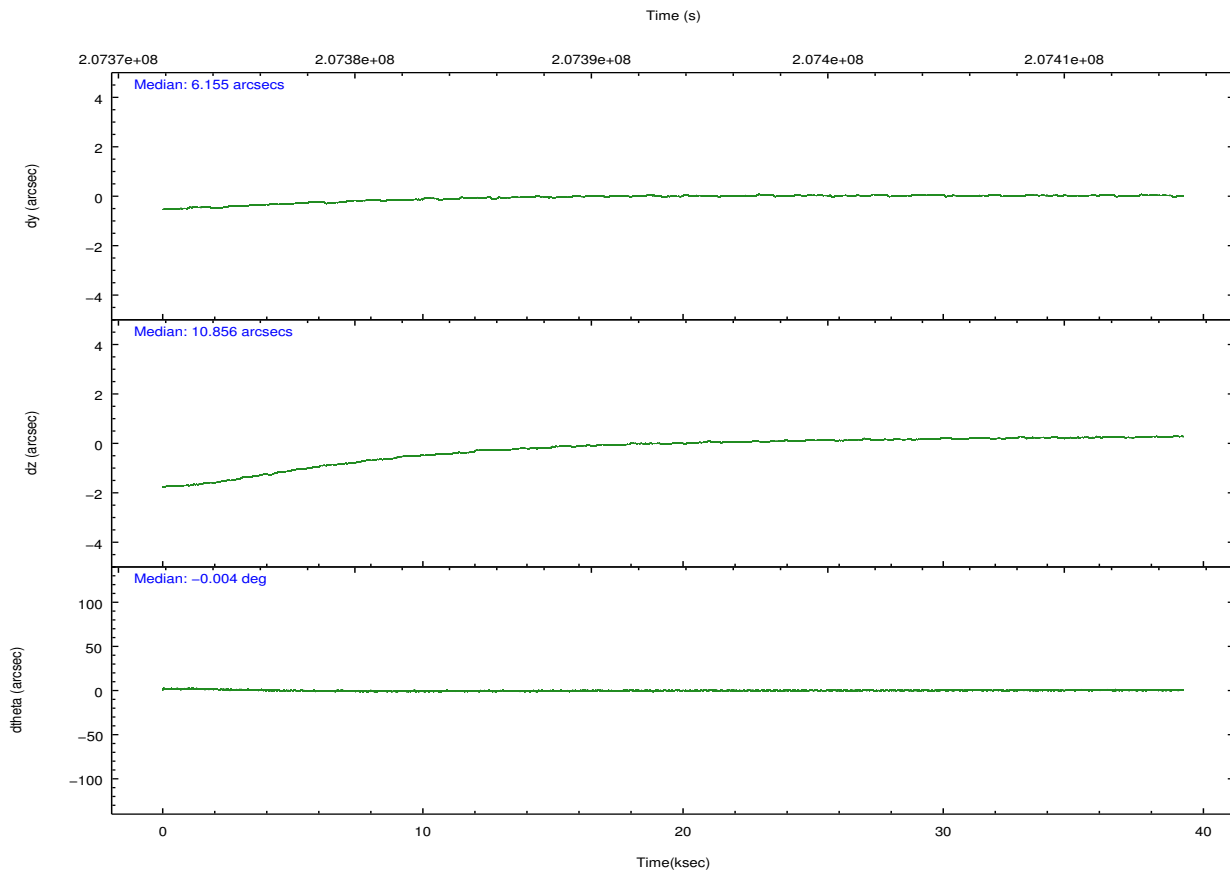
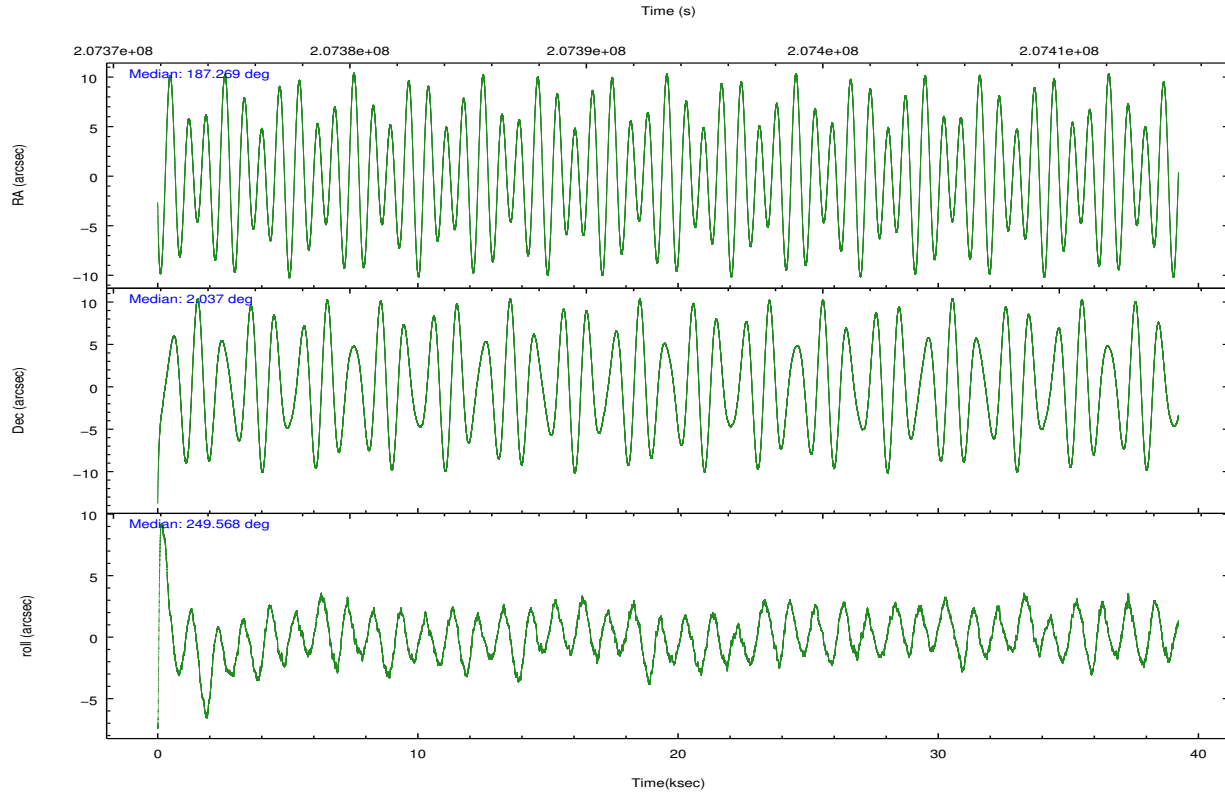
	ccd 7
level 1 events	208115
rejected events	104482
rejected %	50%

	ccd 7
grade 0 events	20339
	9%
grade 1 events	2331
	1%
grade 2 events	20737
	9%
grade 3 events	10308
	4%
grade 4 events	9811
	4%
grade 5 events	14679
	7%
grade 6 events	43138
	20%
grade 7 events	86772
	41%

2.2 Compared Parameters

Parameter	Planned	Actual	Parameter	Planned	Actual
Instrument	ACIS	ACIS	Obspar format version number	7	7
Detector	ACIS-7	ACIS-7	Obspar file type	PREDICTED	ACTUAL
Grating	NONE	NONE	Obspar update status	NONE	UPDATED
Data mode	FAINT	FAINT	Number of optional ACIS chips dropped	0	0
Observation mode	POINTING	POINTING	On-chip summing requested	N	N
[deg] Pointing RA	187.264084	187.2689668501731	Subarray requested	CUSTOM	1/8
[deg] Pointing Dec	2.063419	2.036614653822024	Subarray start row	115	115
[deg] Pointing Roll	249.414993	249.5714406515424	Subarray row count	128	128
[mm] SIM focus pos	-0.684267	-0.6828225247311905	Alternating exposures requested	N	N
[mm] SIM defocus	0	0.001444936568705701	[s] Primary exposure time	0.000000	0.4
[mm] SIM translation stage pos	-182.132523	-182.1344861297048			
[mm] SIM translation stage offset	-8	-7.998036453302973			
[s] Observation start time (MET)	207374014.184000	207372997.23057			
Observation start date	2004-07-28T03:52:30	2004-07-28T03:36:37			
[s] Observation end time (MET)	207413074.184000	207413868.59489			
Observation end date	2004-07-28T14:43:30	2004-07-28T14:57:48			
Read mode	TIMED	TIMED			

2.3 Aspect

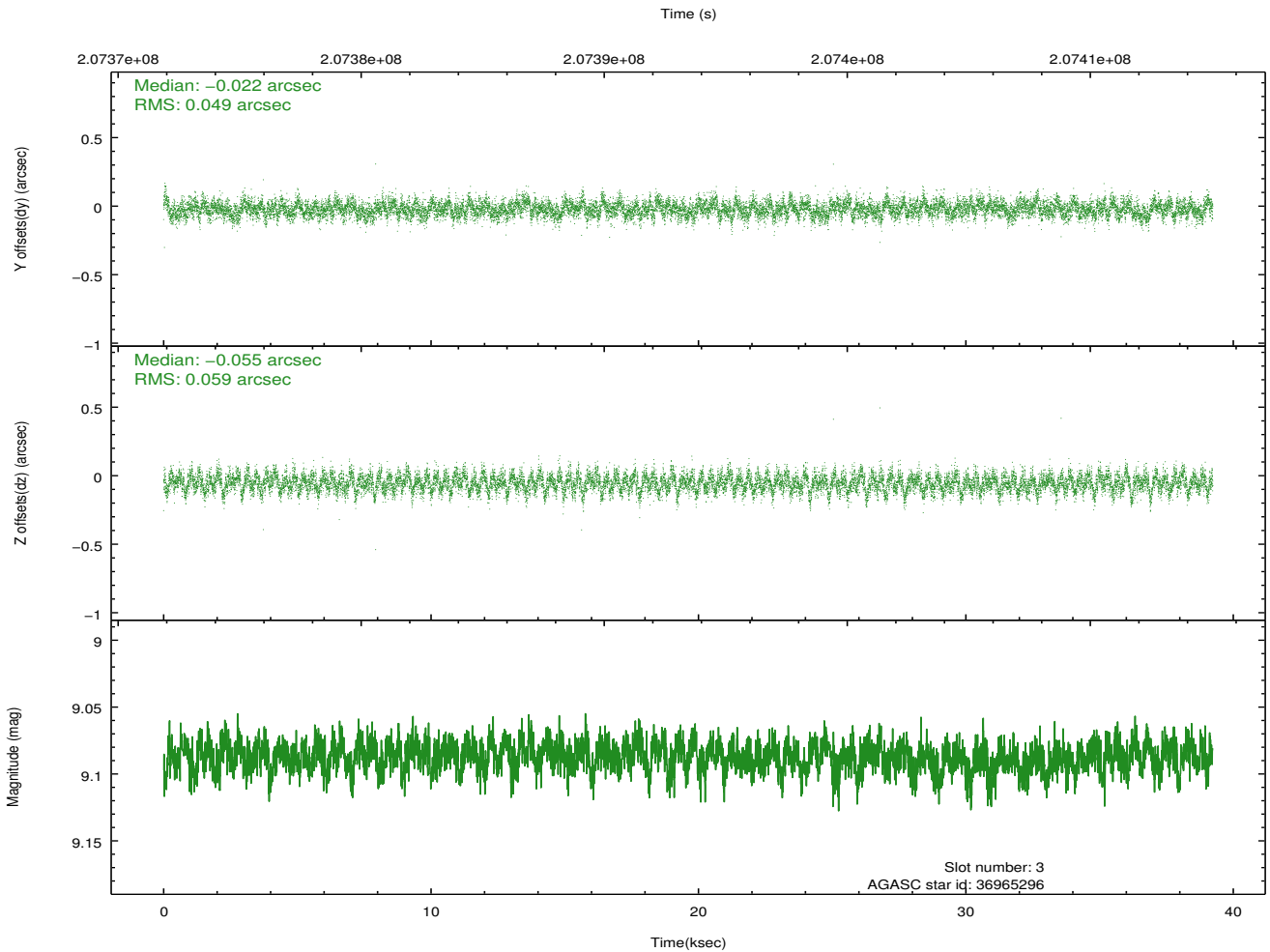
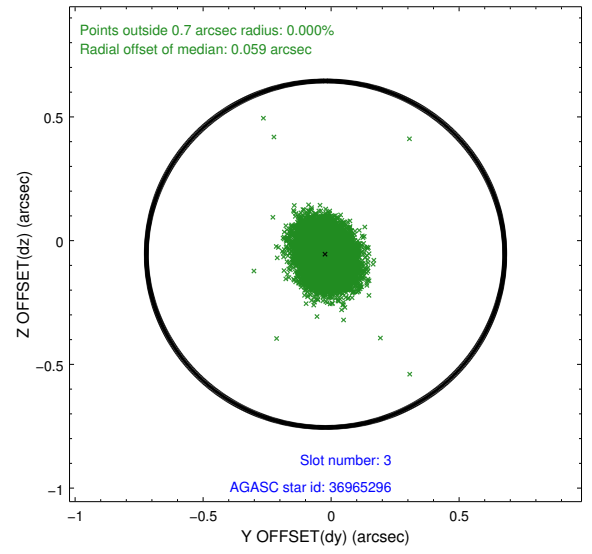
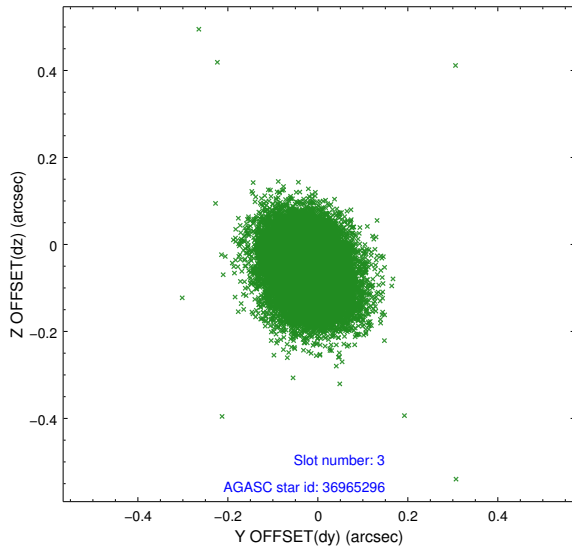


Slot Statistics

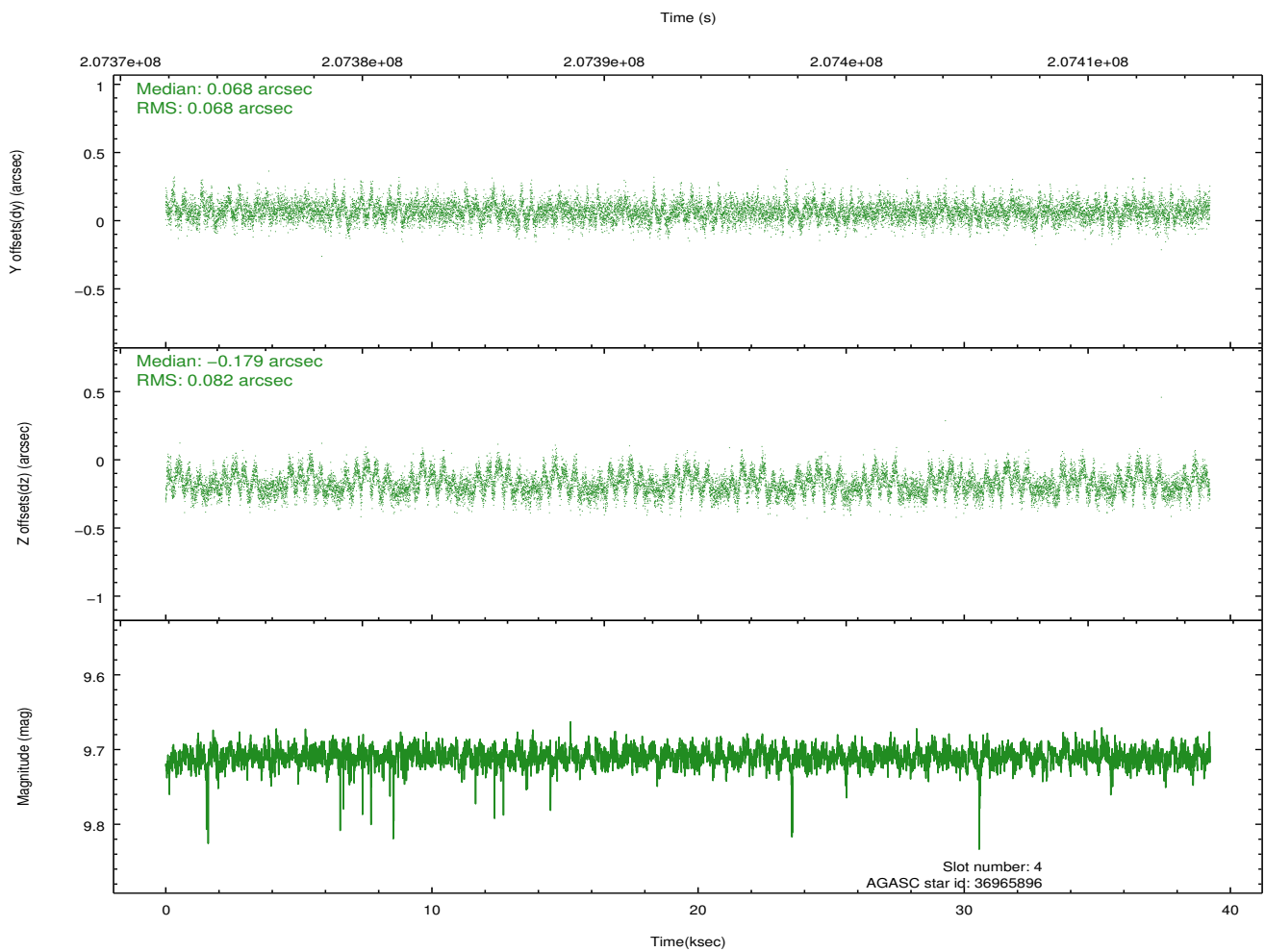
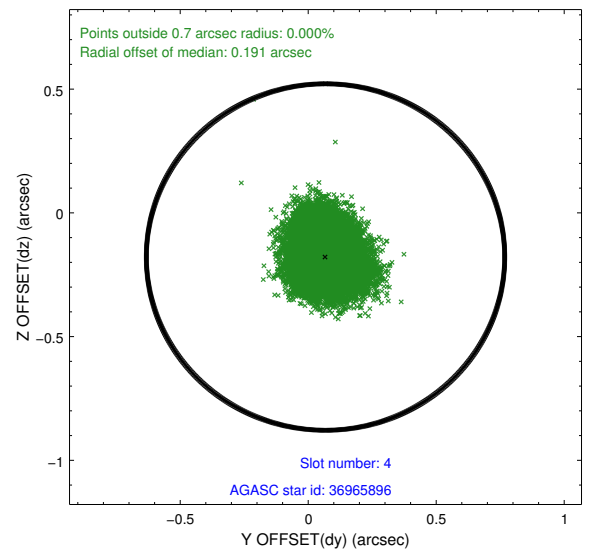
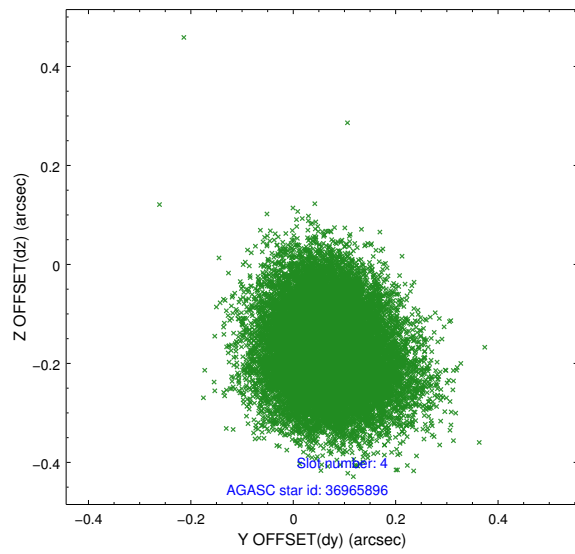
slot	status	id	mag	n_pts	med_dy	med_dz	dr1	dr2	ra	dec	mean_y	mean_z
0	FID	ACIS-S-2	7.08	9569	-0.079	-0.119	0.016	0.030	0.000000	0.000000	-758.31	-1896.75
1	FID	ACIS-S-4	7.18	9569	0.137	0.069	0.011	0.026	0.000000	0.000000	2155.18	11.87
2	FID	ACIS-S-5	7.23	9570	-0.090	0.057	0.015	0.030	0.000000	0.000000	-1811.14	5.54
3	GUIDE	36965296	9.09	19127	-0.022	-0.055	0.081	0.132	186.926292	1.837429	1189.17	-851.83
4	GUIDE	36965896	9.71	19121	0.068	-0.179	0.114	0.182	187.153754	1.617178	1643.90	193.12
5	GUIDE	37356352	7.69	19139	-0.369	-0.090	0.054	0.087	187.433784	2.618460	-2085.16	-131.32
6	GUIDE	37883040	10.02	19128	0.248	0.183	0.125	0.210	187.575516	1.280402	2245.19	2040.88
7	GUIDE	36963280	9.65	19060	0.073	0.142	0.105	0.171	186.985307	1.456816	2397.49	-171.14

2.4 Star Slots

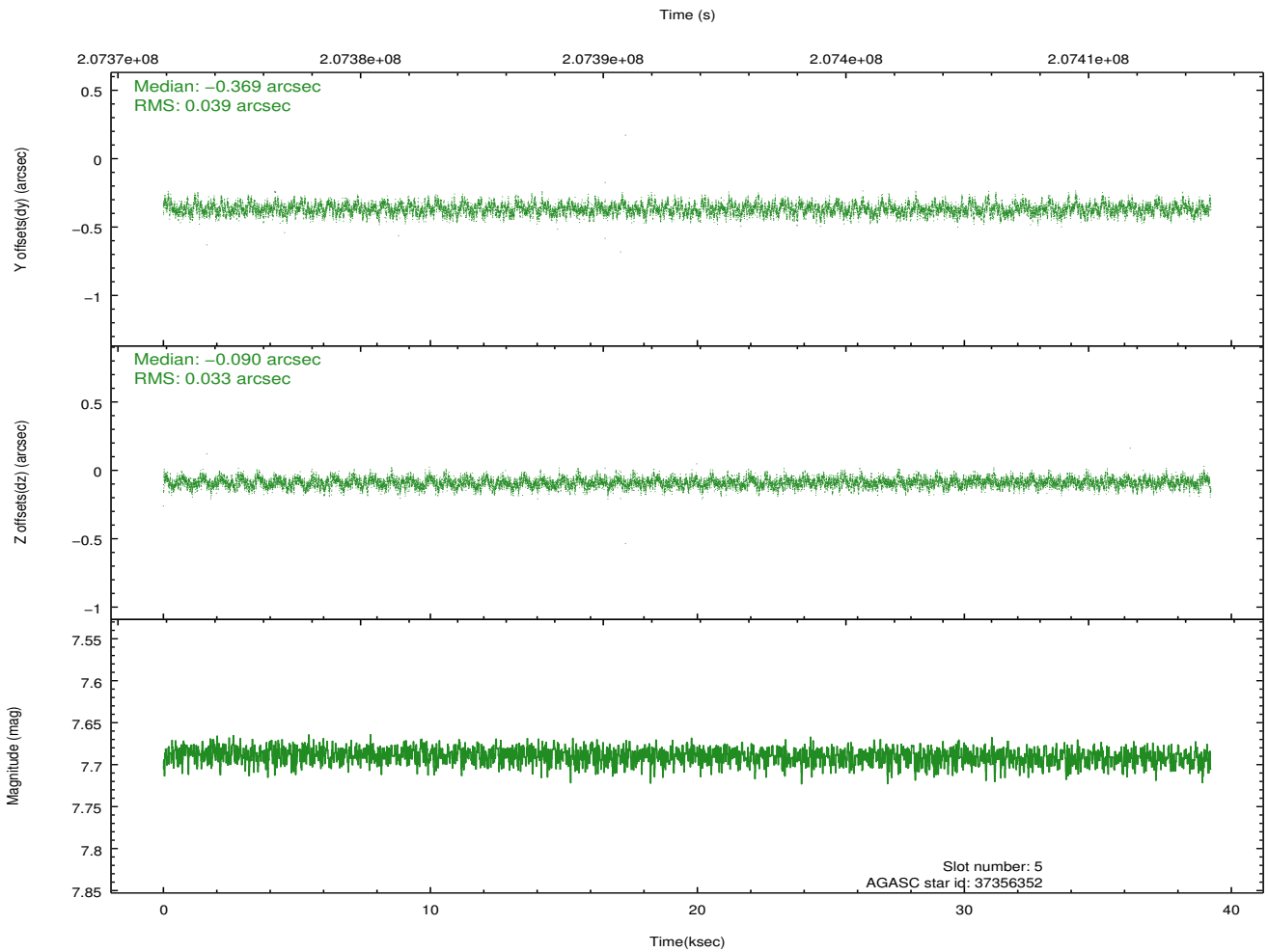
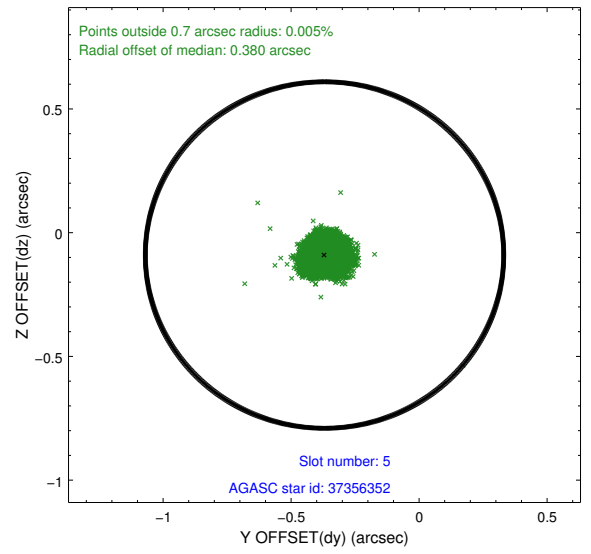
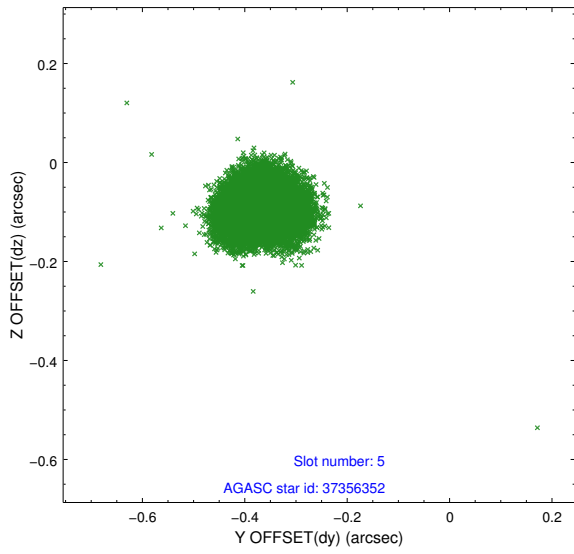
2.4.1 Slot 3



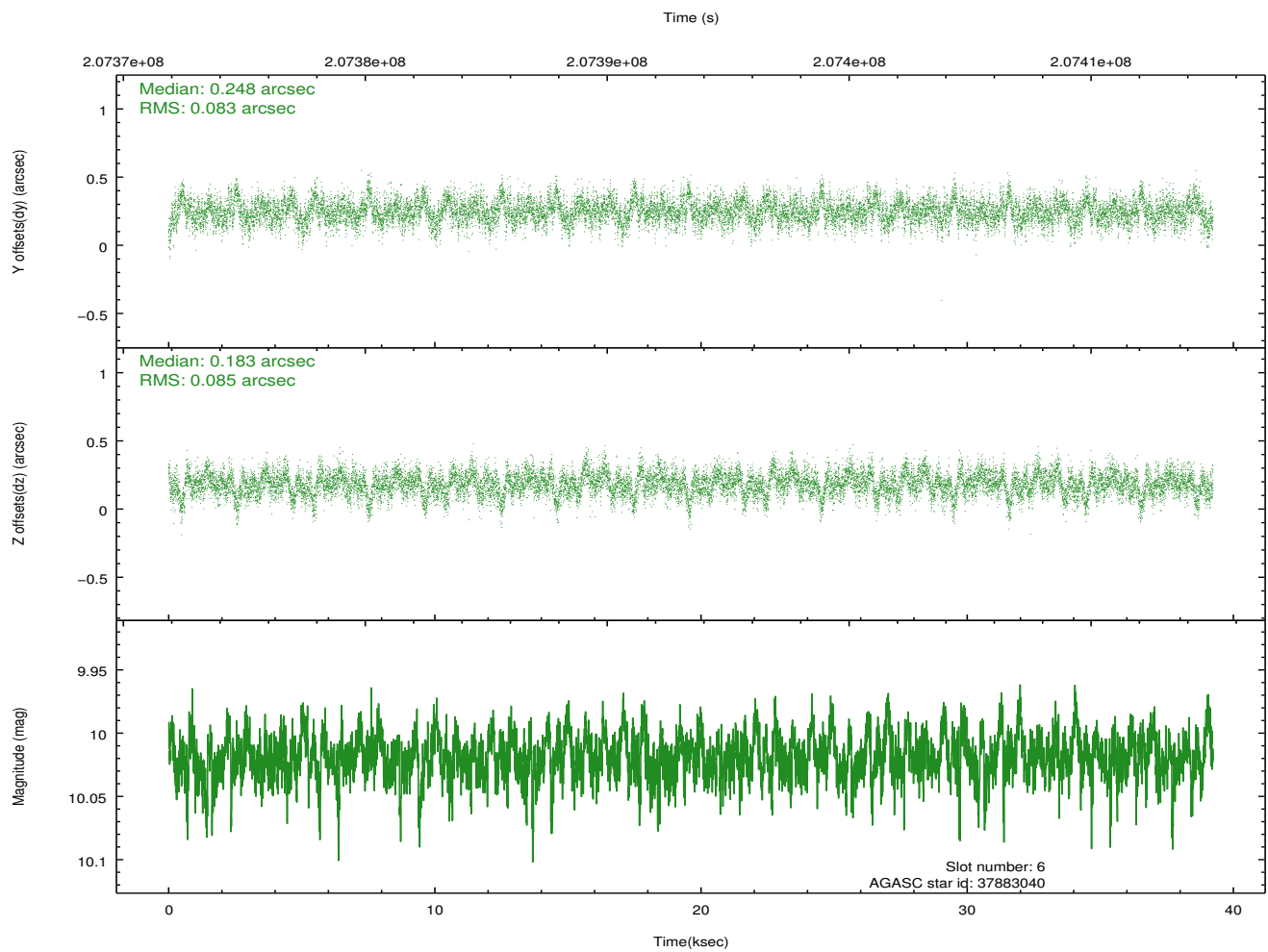
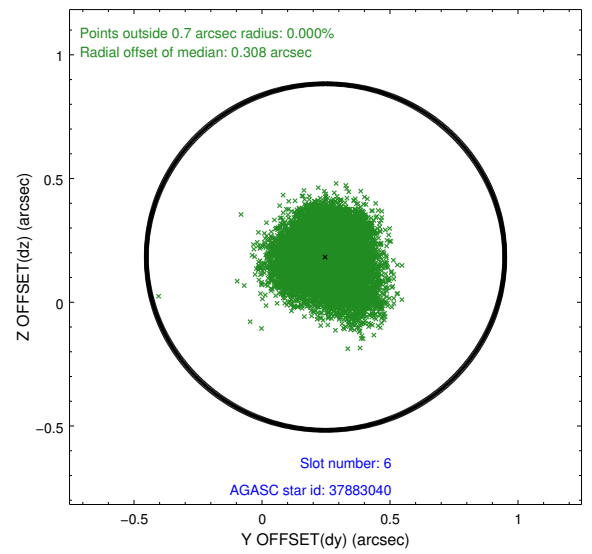
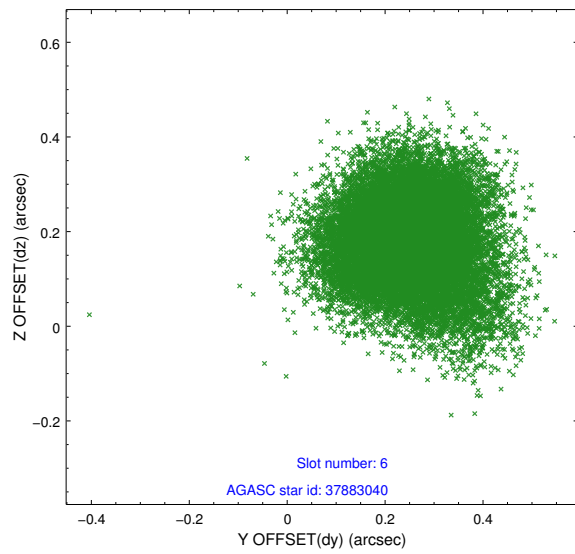
2.4.2 Slot 4



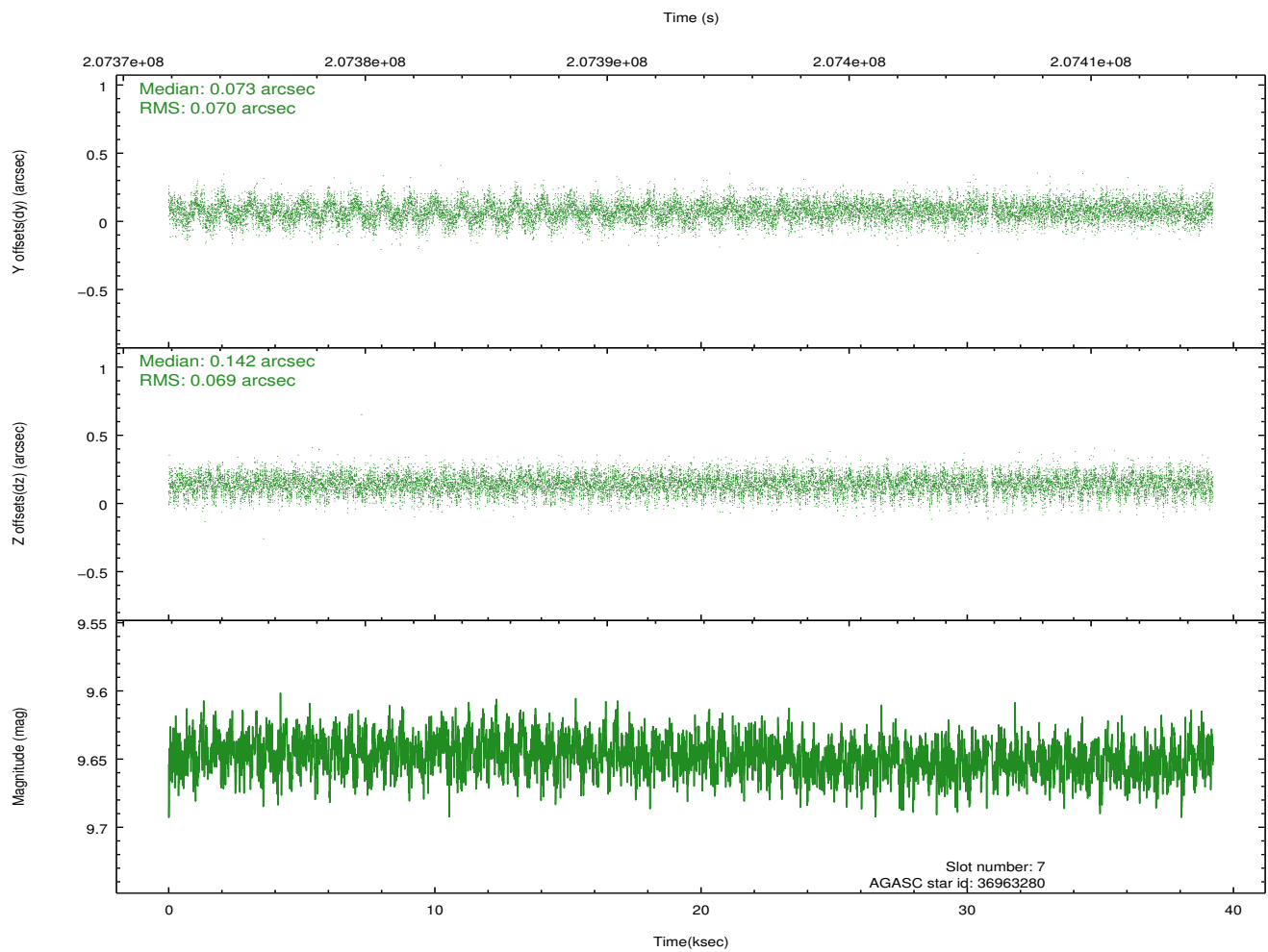
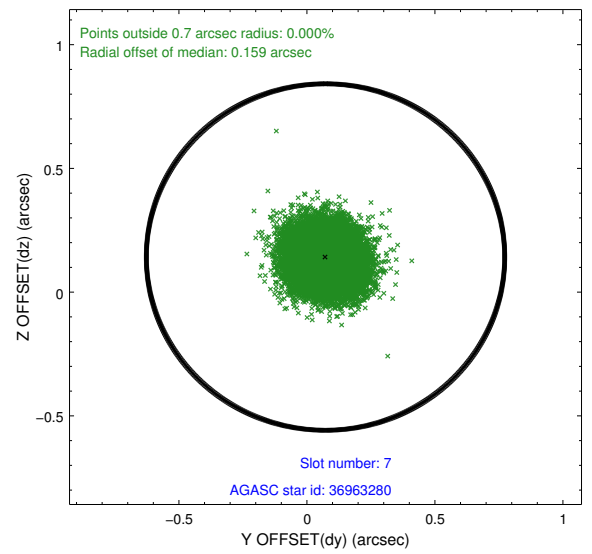
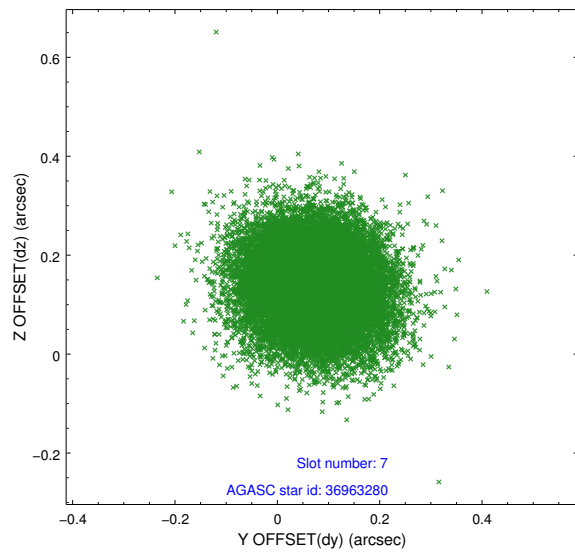
2.4.3 Slot 5



2.4.4 Slot 6

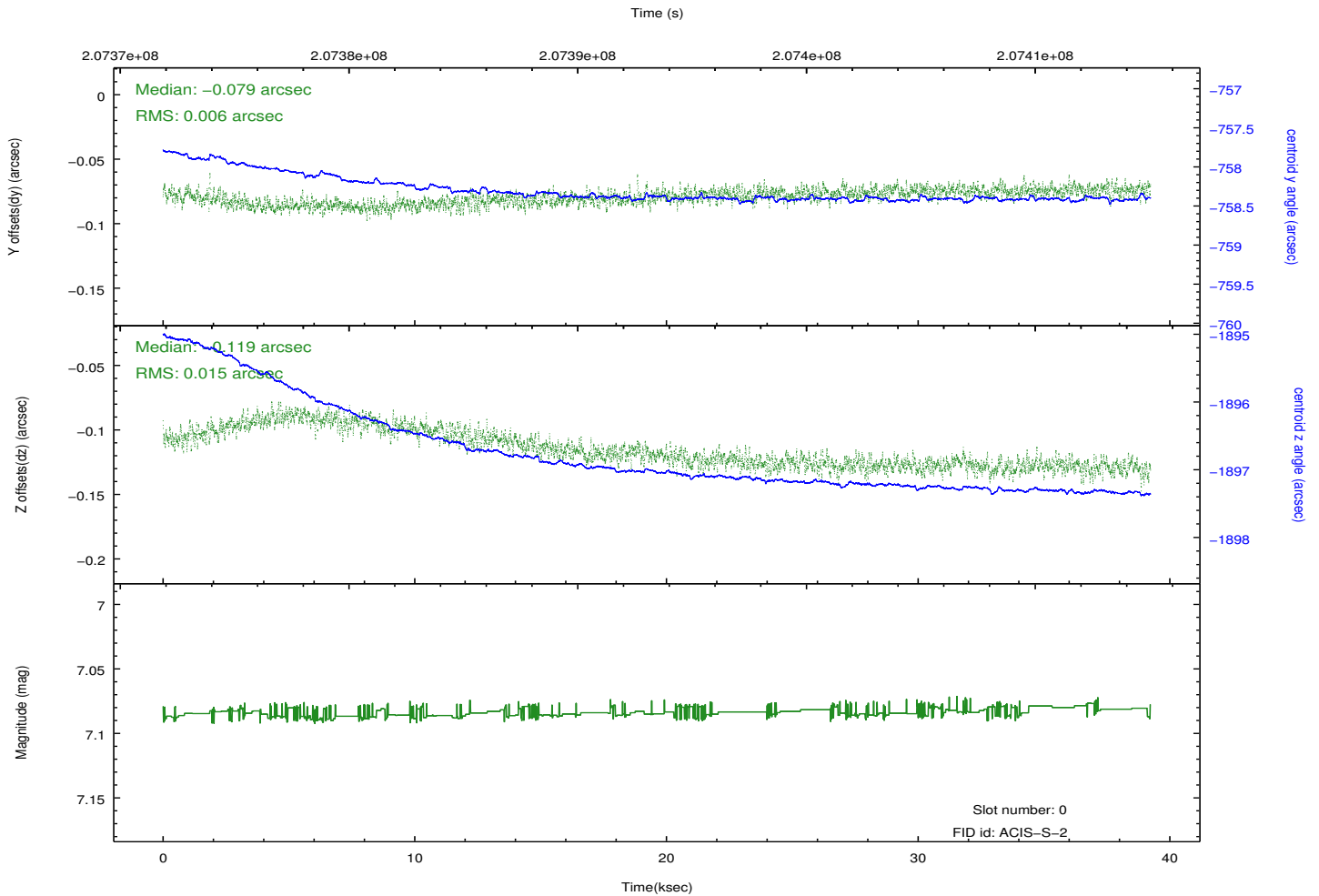
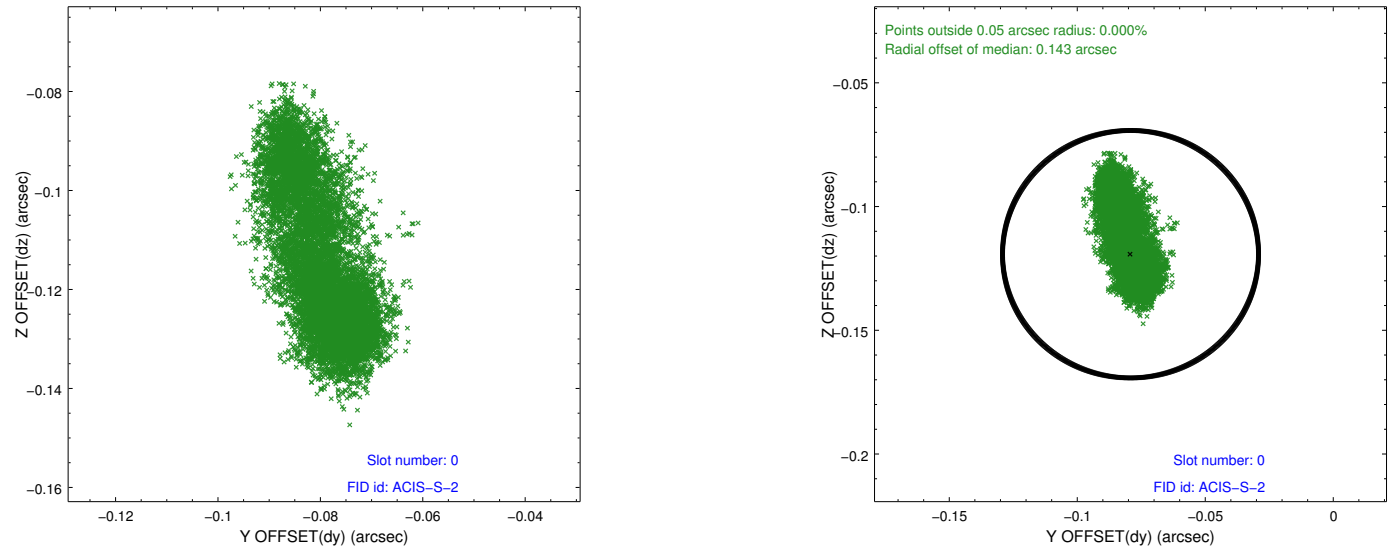


2.4.5 Slot 7

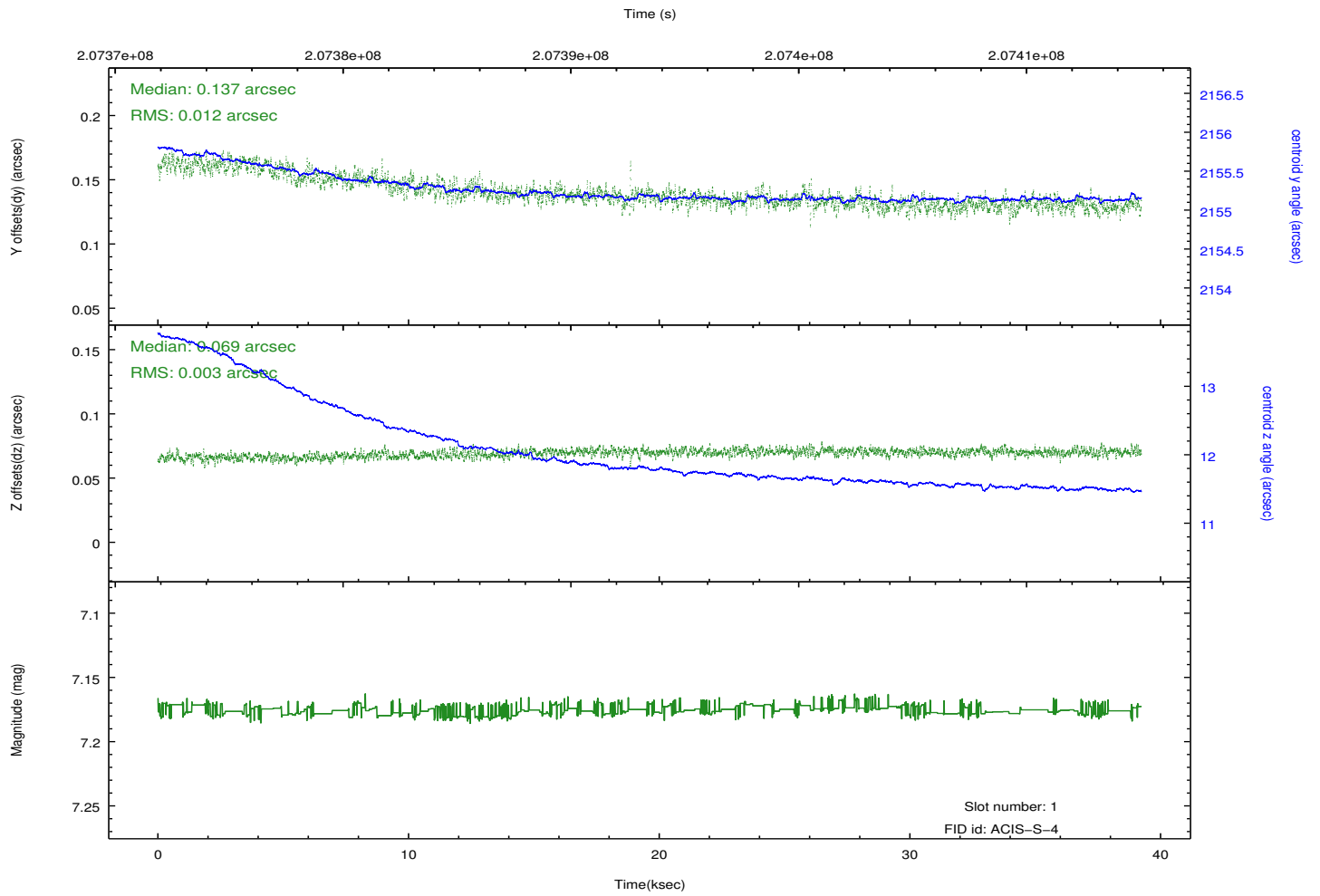
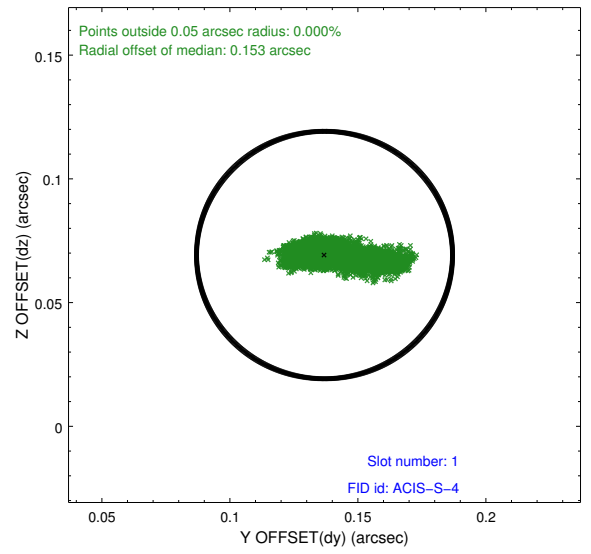
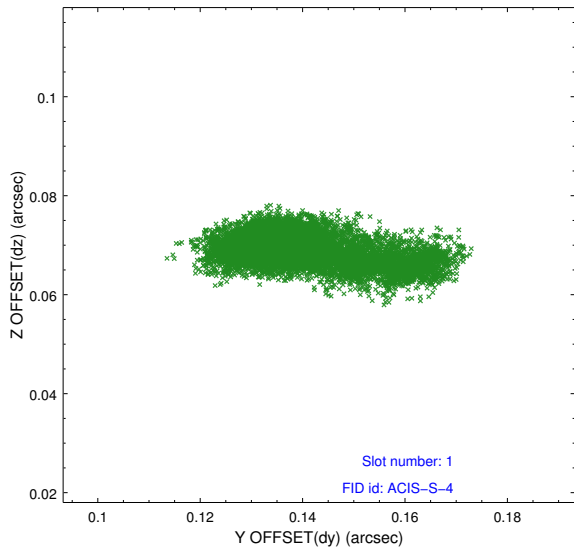


2.5 FID Slots

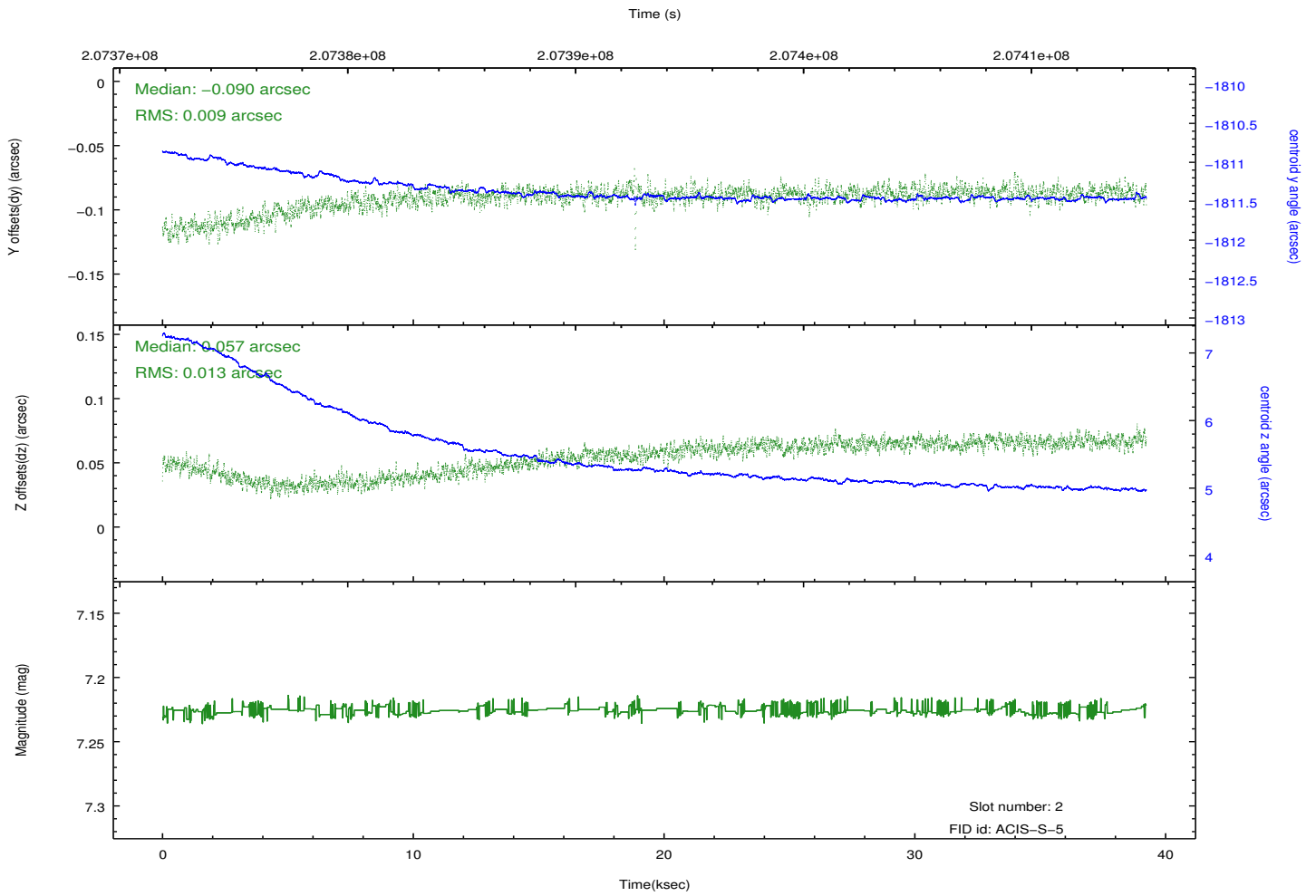
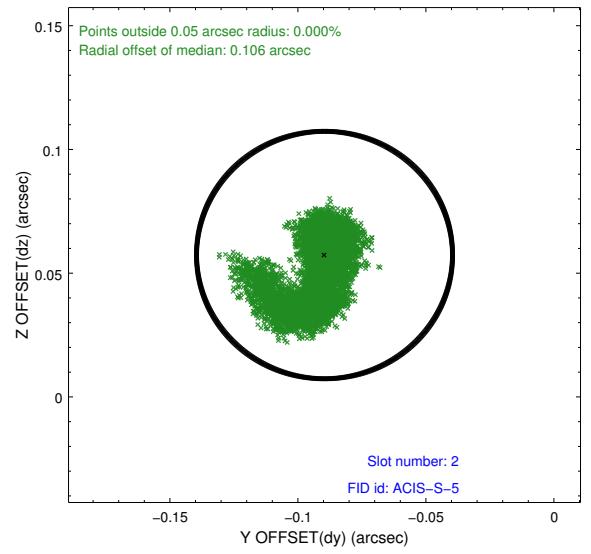
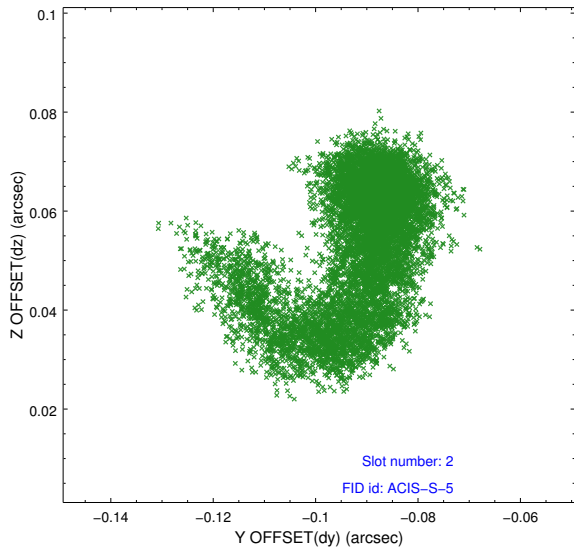
2.5.1 Slot 0



2.5.2 Slot 1



2.5.3 Slot 2



A Summary

A.1 Status

V&V Scientist	Jen Lauer
V&V Date (YYYY-MM-DD)	2012.12.20
V&V Edition	1
V&V Disposition and Status	OK
V&V Charge Time	39.234

A.2 Comments