

V&V Reference Report

L2 ASCDS Version : 8.4.5

Observation 49899 - L2 Version 4
Chandra X-Ray Center

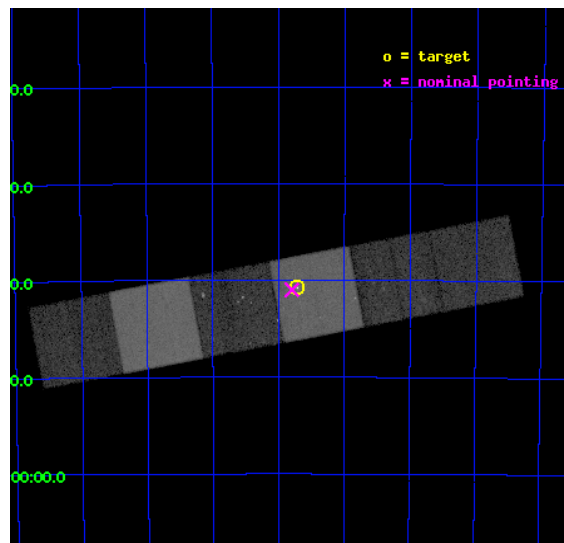
L2 Processing Date : Aug 26 2012

Contents

1	Front	2
2	OBI	3
2.1	OBI	3
2.1.1	Images	3
2.1.2	Bias	3
2.1.3	Parameters	4
2.1.4	Events	4
2.2	Compared Parameters	5
2.3	Aspect	6
2.4	Star Slots	9
2.4.1	Slot 3	9
2.4.2	Slot 4	10
2.4.3	Slot 5	11
2.4.4	Slot 6	12
2.5	FID Slots	13
2.5.1	Slot 0	13
2.5.2	Slot 1	14
2.5.3	Slot 2	15
A	Summary	16
A.1	Status	16
A.2	Comments	16

1 Front

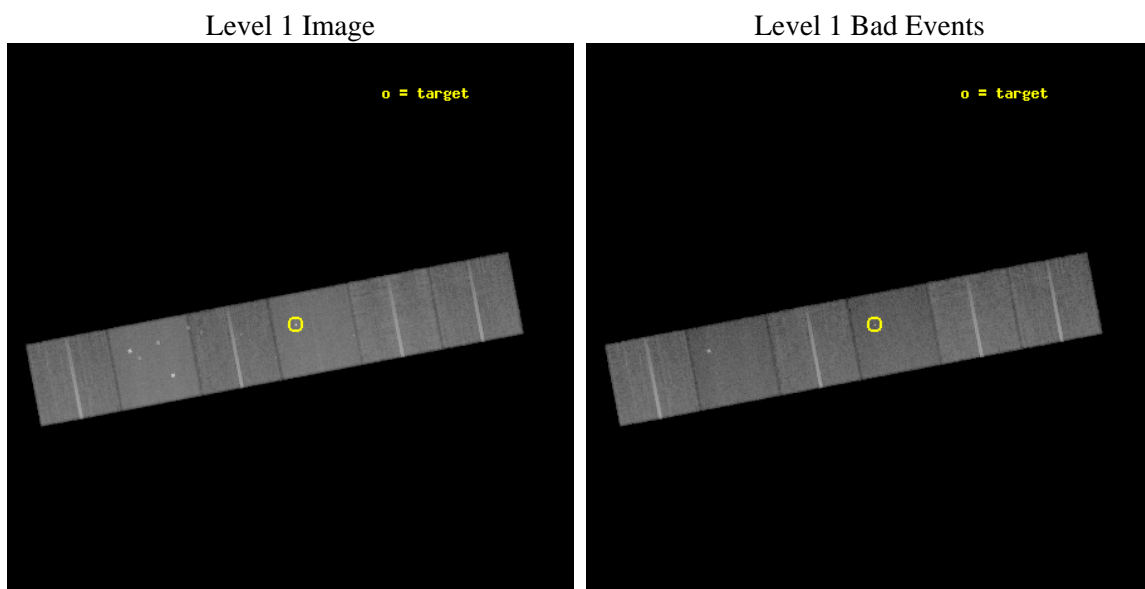
seq_num	200066	Sequence number
obs_id	49899	Observation id
title	COORDINATED AXAF AND HST SPECTROSCOPY OF FLARES ON PROXIMA CENTAURI	
observer	Dr. Jeffrey Linsky	Principal investigator
object	PROXIMA CENTAURI	Source name
dtcycle	0	
cycle	P	events from which exps? Prim/Second/Both
ra_targ	217.42875	Observer's specified target RA [deg]
dec_targ	-62.679472	Observer's specified target Dec [deg]
ra_nom	217.44912218939	Nominal RA [deg]
dec_nom	-62.683126033375	Nominal Dec [deg]
roll_nom	349.18472131863	Nominal Roll [deg]
revision	4	Processing version of data
ontime	29856.000027791	Sum of GTIs [s]
livetime	29477.945378314	Livetime [s]
ontime4	29856.000027791	Sum of GTIs [s]
ontime5	29856.000027791	Sum of GTIs [s]
ontime6	29856.000027791	Sum of GTIs [s]
ontime7	29856.000027791	Sum of GTIs [s]
ontime8	29856.000027791	Sum of GTIs [s]
ontime9	29856.000027791	Sum of GTIs [s]
l2events	308974	Number of level 2 events



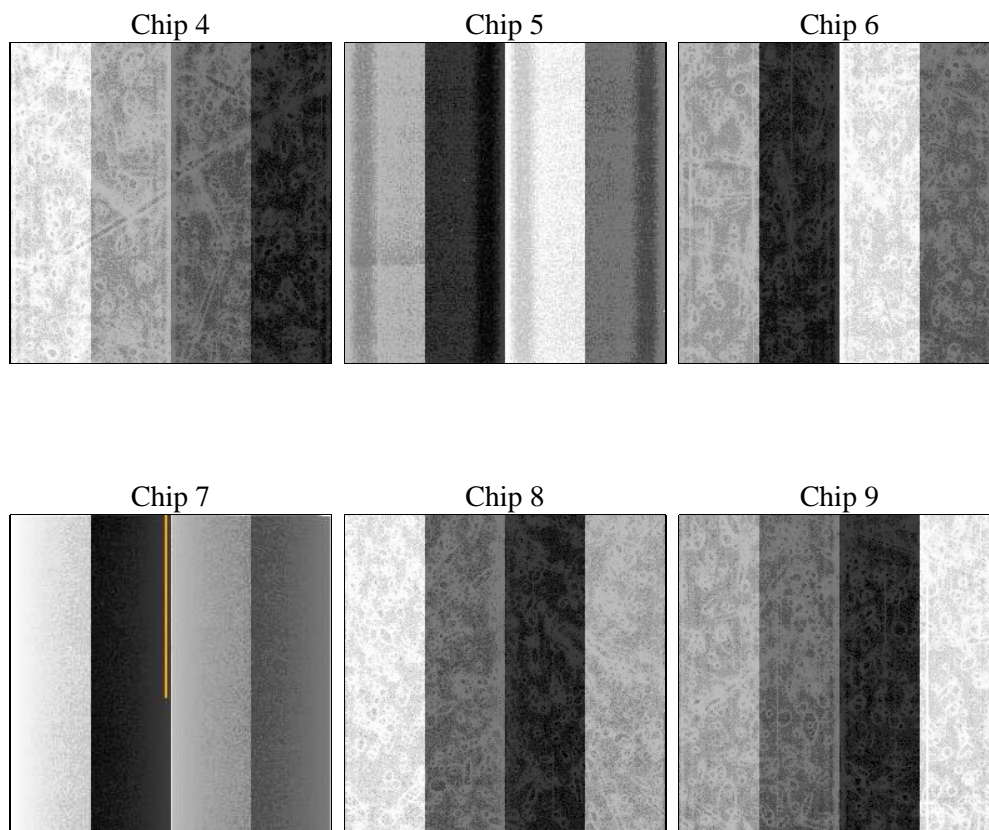
2 OBI

2.1 OBI

2.1.1 Images



2.1.2 Bias



2.1.3 Parameters

obi_num	0	Obi number	sched_exp_time	30000.000000	[s] Scheduled observation exposure time
ascdsver	8.4.5	Processing system revision	ontime	29856.000027791	Sum of GTIs [s]
caldbver	4.5.1.1	 	ontime4	29856.000027791	Sum of GTIs [s]
date	2012-08-26T22:31:59	Date and time of file creation	ontime5	29856.000027791	Sum of GTIs [s]
revision	4	Processing version of data	ontime6	29856.000027791	Sum of GTIs [s]
			ontime7	29856.000027791	Sum of GTIs [s]
			ontime8	29856.000027791	Sum of GTIs [s]
			ontime9	29856.000027791	Sum of GTIs [s]
			l1events	1432298	Number of level 1 events

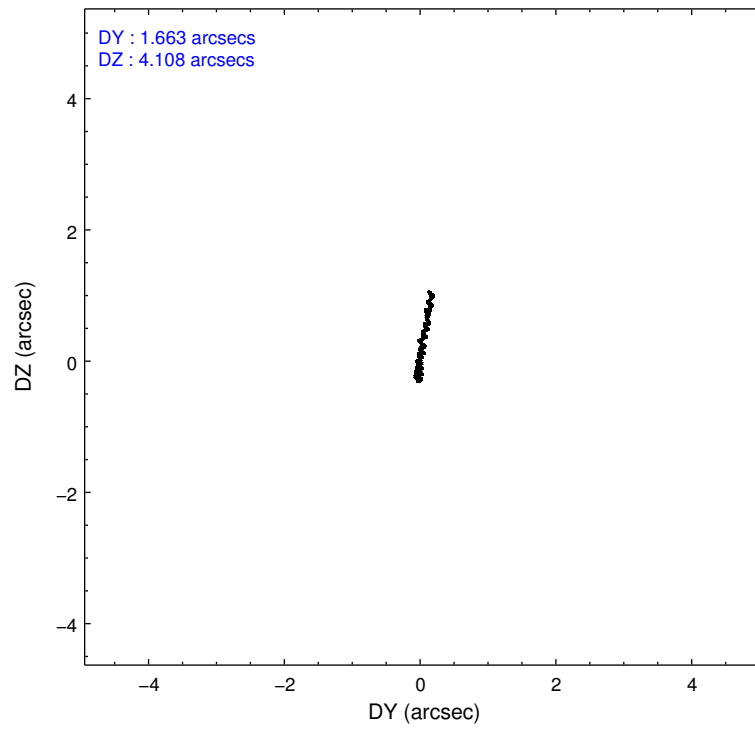
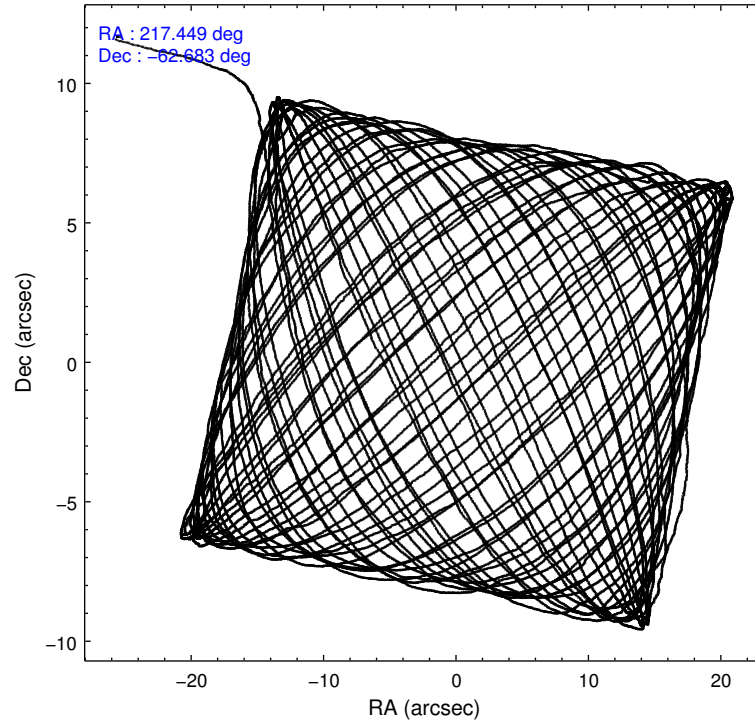
2.1.4 Events

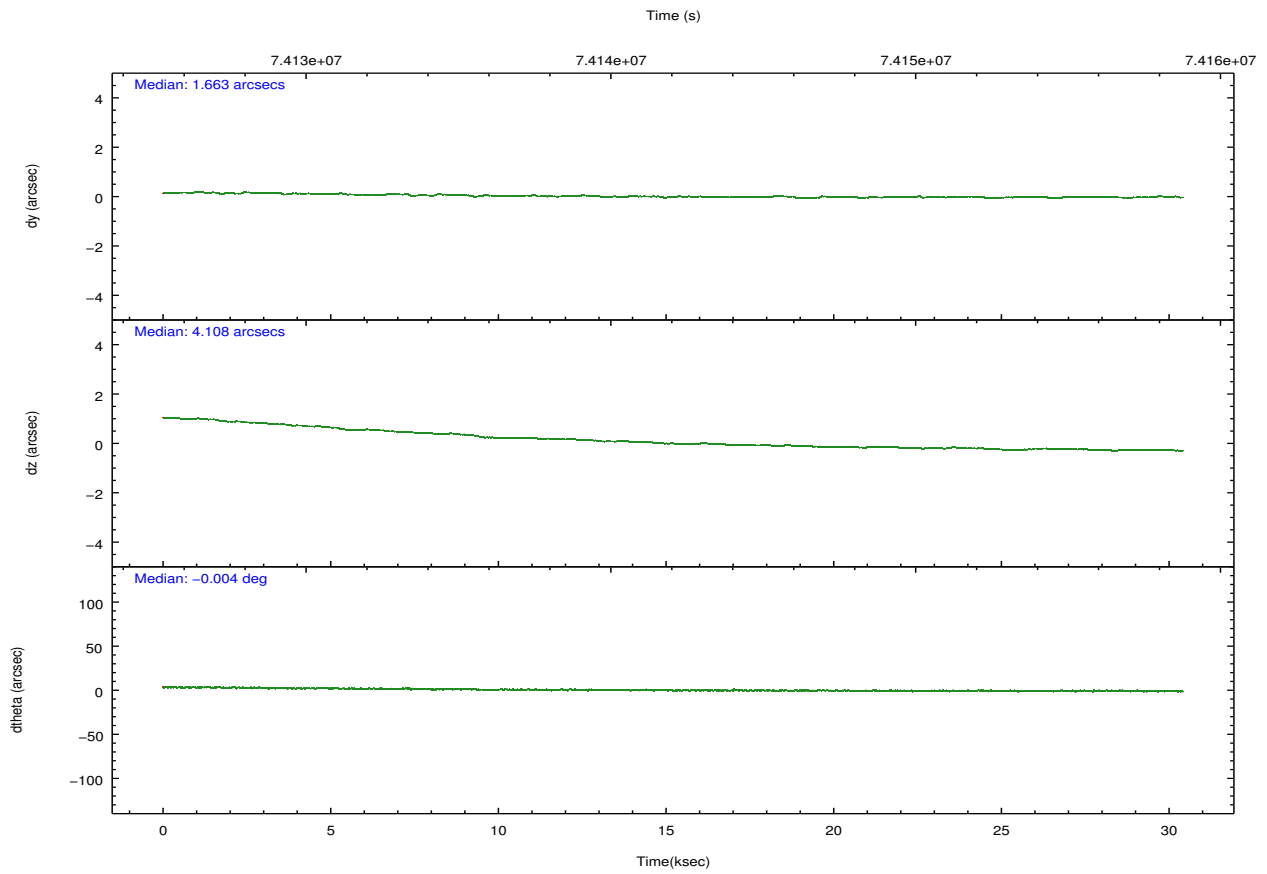
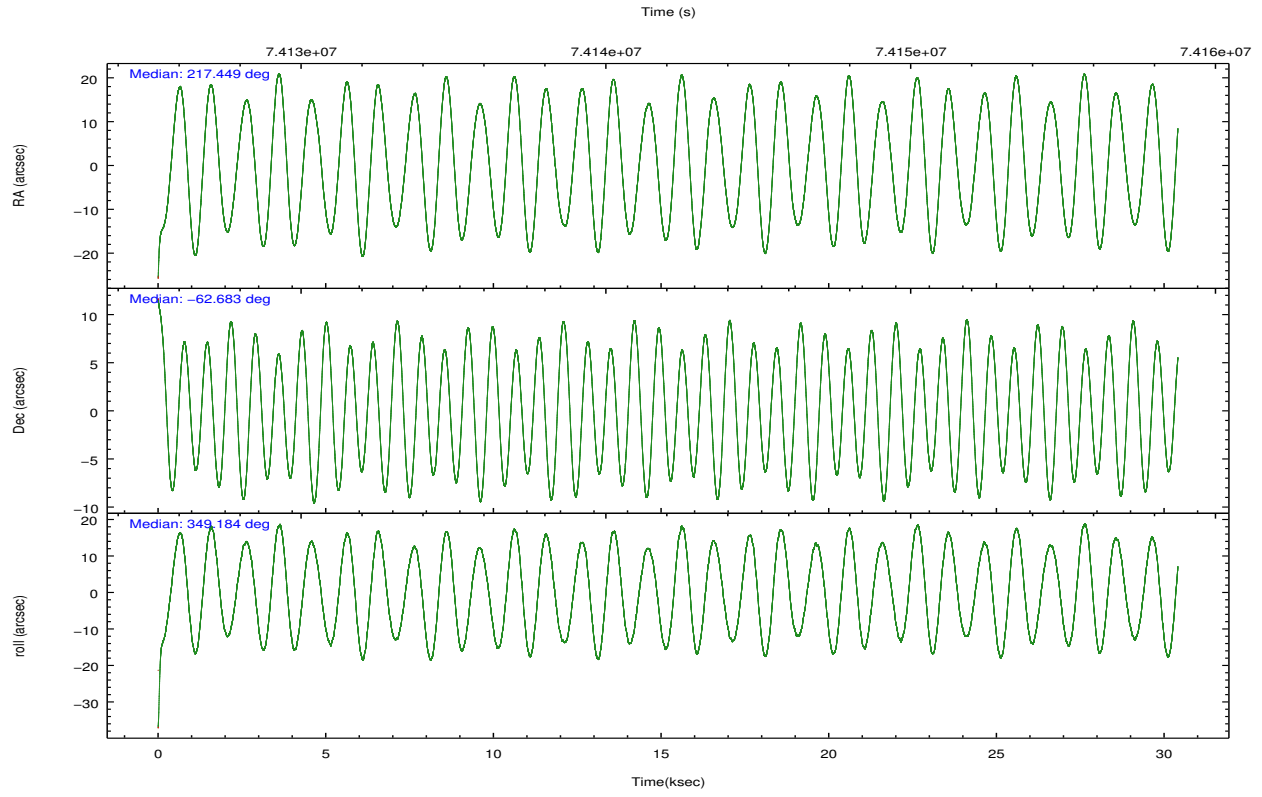
	ccd 4	ccd 5	ccd 6	ccd 7	ccd 8	ccd 9		ccd 4	ccd 5	ccd 6	ccd 7	ccd 8	ccd 9
level 1 events	231573	274675	210853	254009	256970	204218	grade 0 events	10464	18525	11290	12914	16637	10039
rejected events	207460	143825	186133	141552	207607	180574		4%	6%	5%	5%	6%	4%
rejected %	89%	52%	88%	55%	80%	88%	grade 1 events	100	341	92	547	151	88
								0%	0%	0%	0%	0%	0%
							grade 2 events	5510	37900	4519	22837	10209	4585
								2%	13%	2%	8%	3%	2%
							grade 3 events	2216	6061	2384	10374	5290	2367
								0%	2%	1%	4%	2%	1%
							grade 4 events	2137	5554	2322	10383	4939	2319
								0%	2%	1%	4%	1%	1%
							grade 5 events	6495	21640	7848	24086	9587	7750
								2%	7%	3%	9%	3%	3%
							grade 6 events	3806	62843	4208	55984	12296	4340
								1%	22%	1%	22%	4%	2%
							grade 7 events	200845	121811	178190	116884	197861	172730
								86%	44%	84%	46%	76%	84%

2.2 Compared Parameters

Parameter	Planned	Actual	Parameter	Planned	Actual
Instrument	ACIS	ACIS	Obspar format version number	7	7
Detector	ACIS-456789	ACIS-456789	Obspar file type	PREDICTED	ACTUAL
Grating	NONE	NONE	Obspar update status	NONE	UPDATED
Data mode	FAINT	FAINT	Number of optional ACIS chips dropped	0	0
Observation mode	POINTING	POINTING	On-chip summing requested	N	N
[deg] Pointing RA	217.392764	217.4491221893948	Subarray requested	NONE	NONE
[deg] Pointing Dec	-62.692220	-62.68312603337467	Alternating exposures requested	N	N
[deg] Pointing Roll	348.978020	349.1847213186263	[s] Primary exposure time	0.000000	3.2
[s] Window start time (MET)	74044864.184000	74044864.184000			
[s] Window stop time (MET)	74300464.184000	74300464.184000			
[mm] SIM focus pos	-0.684267	-0.6828225247311905			
[mm] SIM defocus	0	0.001444936568705701			
[mm] SIM translation stage pos	-187.132523	-187.1254020033014			
[mm] SIM translation stage offset	-3	-3.007120579706367			
[s] Observation start time (MET)	74127246.184000	74126180.567865			
Observation start date	2000-05-07T22:53:02	2000-05-07T22:36:20			
[s] Observation end time (MET)	74157246.184000	74158261.019043			
Observation end date	2000-05-08T07:13:02	2000-05-08T07:31:01			
Read mode	TIMED	TIMED			

2.3 Aspect





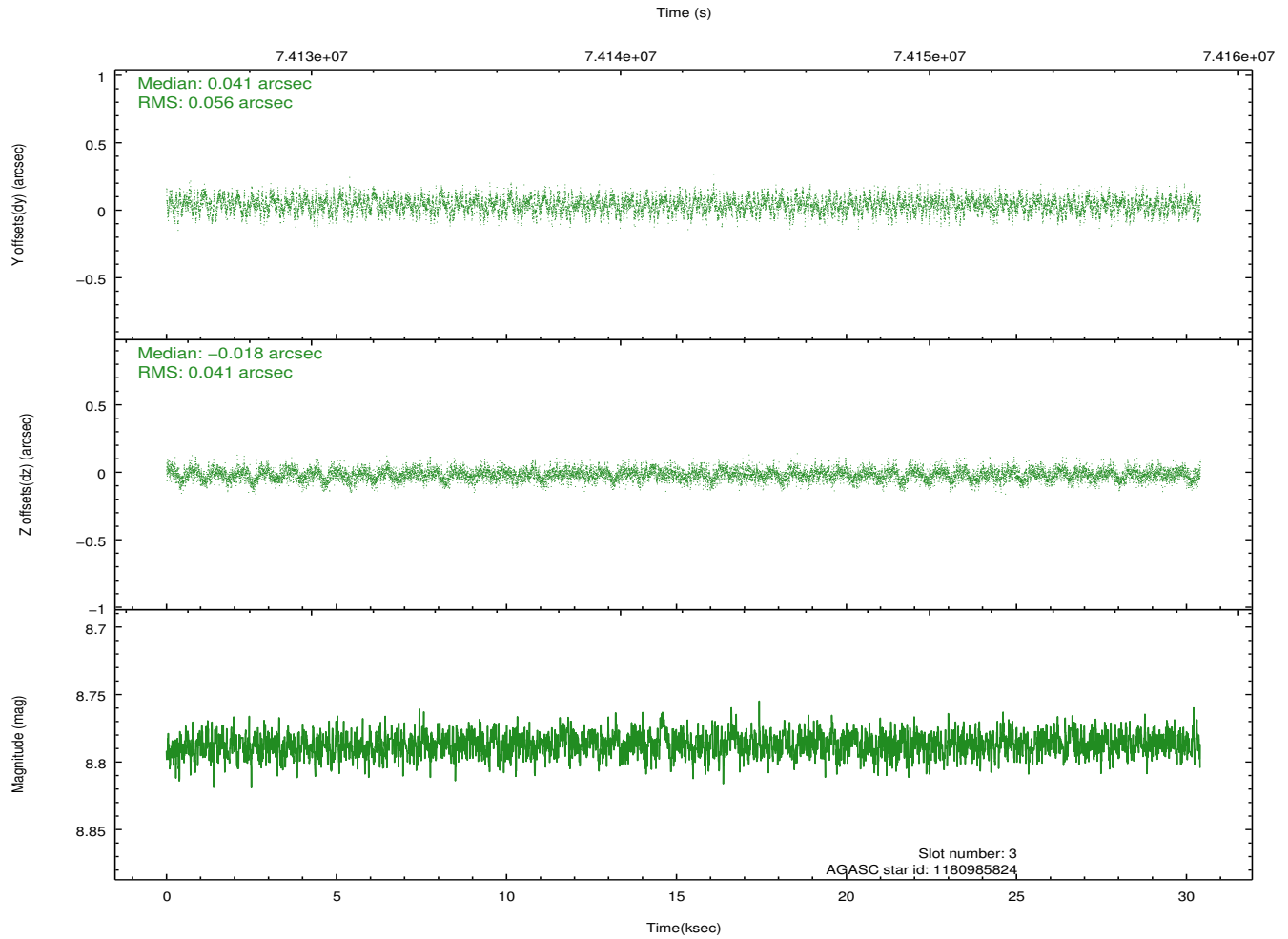
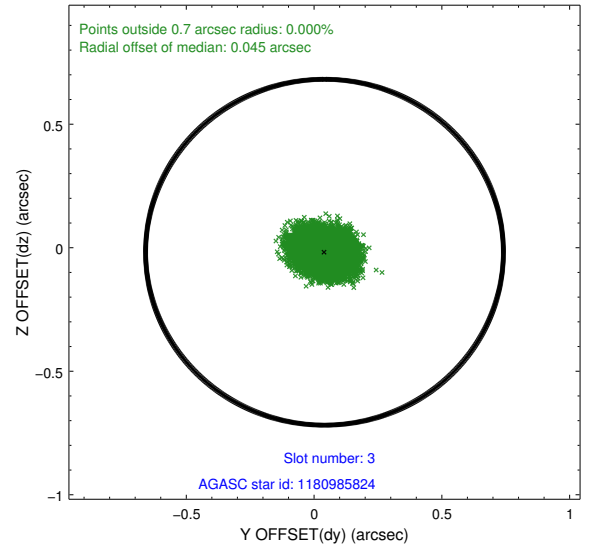
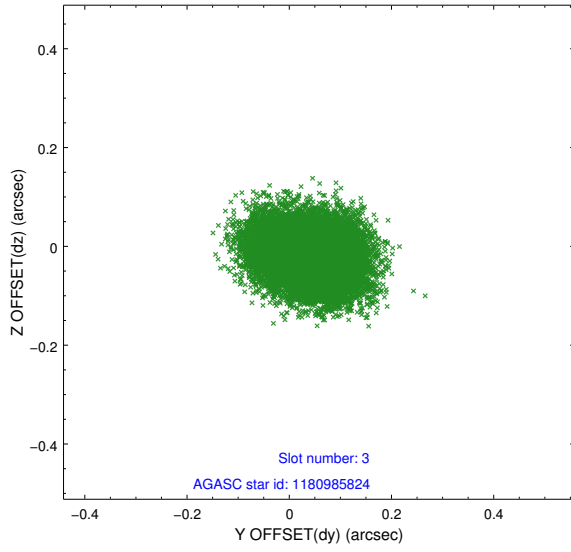
Slot Statistics

	status	id	mag	n_pts	med_dy	med_dz	dr1
	FID	ACIS-S-2	7.10	7418	-0.054	-0.031	0.012
	FID	ACIS-S-4	7.20	7418	0.005	0.033	0.009
	FID	ACIS-S-5	7.23	7418	0.017	0.004	0.011
	GUIDE	1180985824	8.79	14831	0.041	-0.018	0.074
	GUIDE	1180982296	8.83	14830	-0.004	-0.021	0.078
	GUIDE	1181131768	8.92	14830	-0.024	0.002	0.070
	GUIDE	1180977136	9.03	14827	-0.018	0.040	0.086
0.000	0.000	0.000	0.000000	0.000000	0.00	0.00	

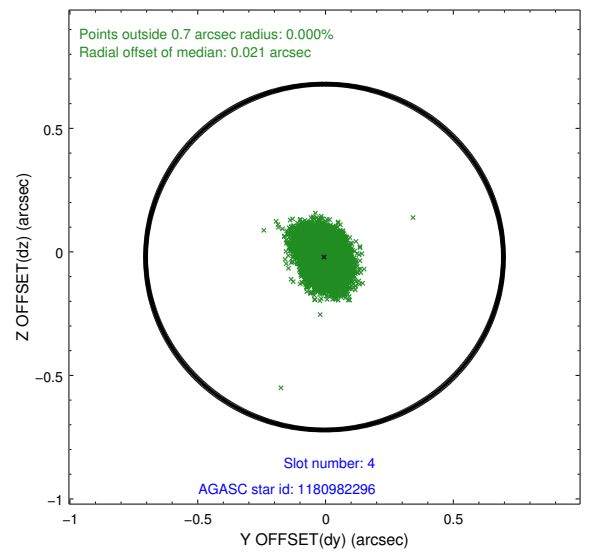
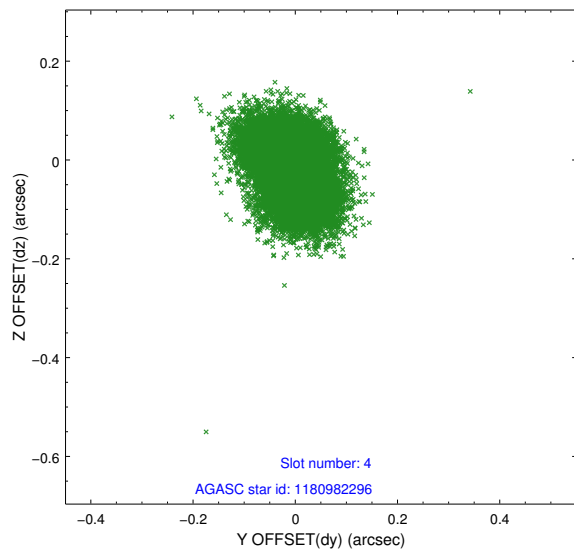
∞

2.4 Star Slots

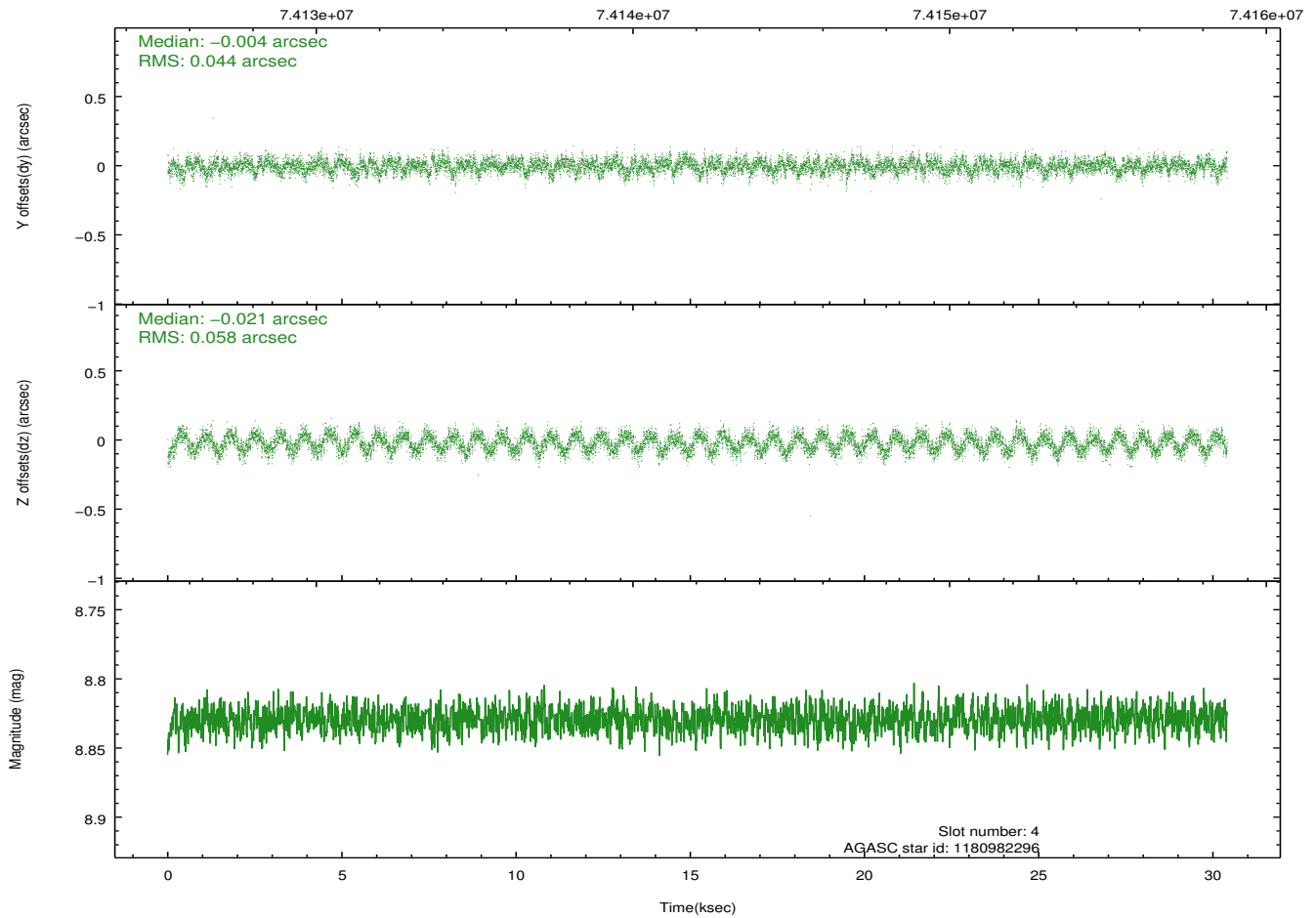
2.4.1 Slot 3



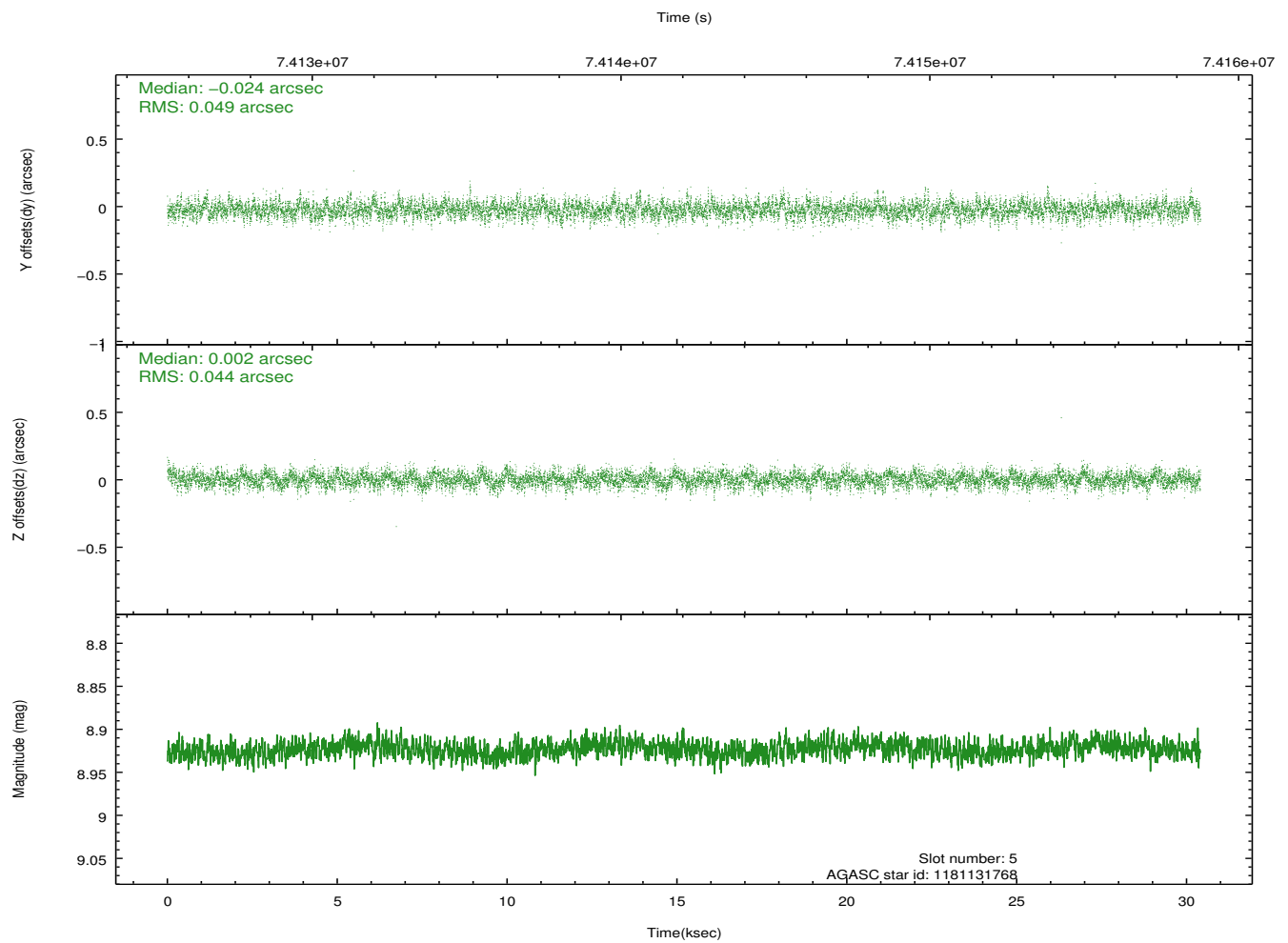
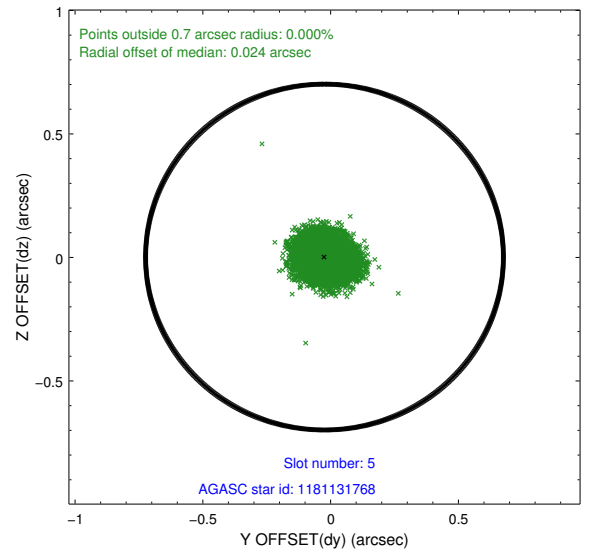
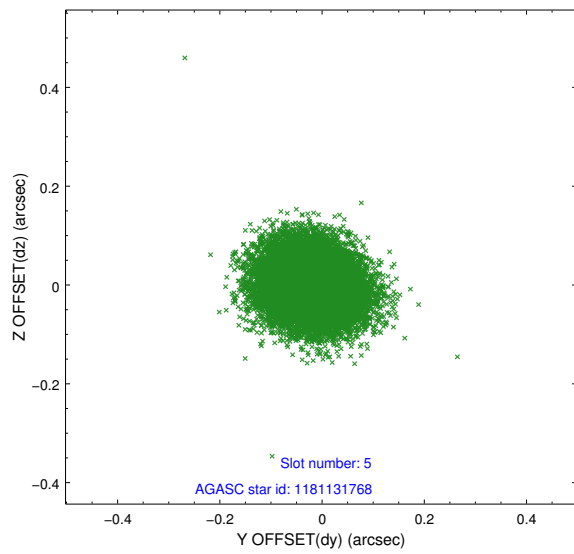
2.4.2 Slot 4



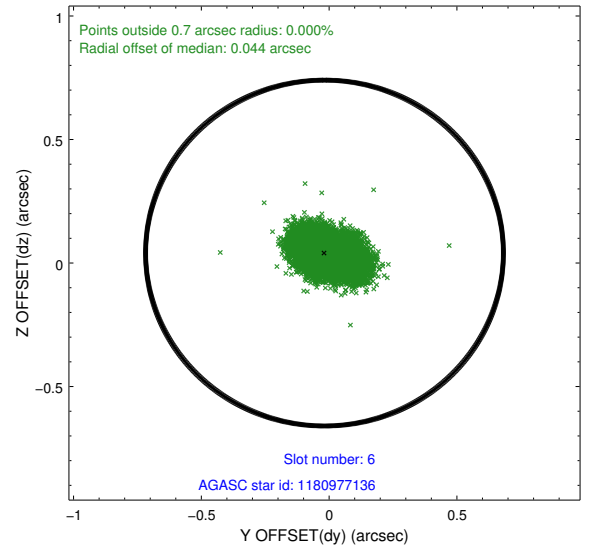
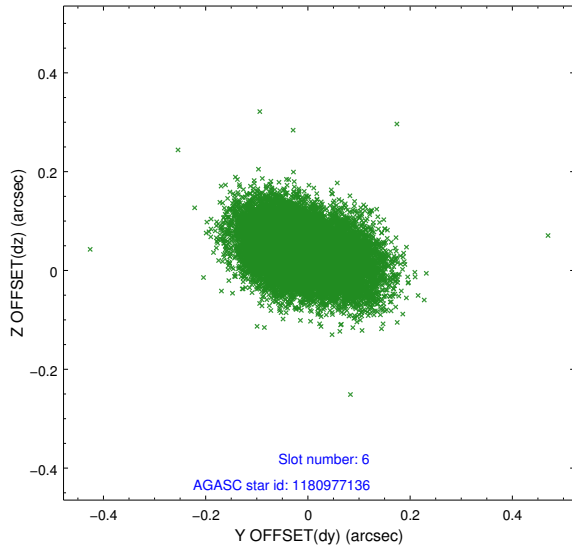
Time (s)



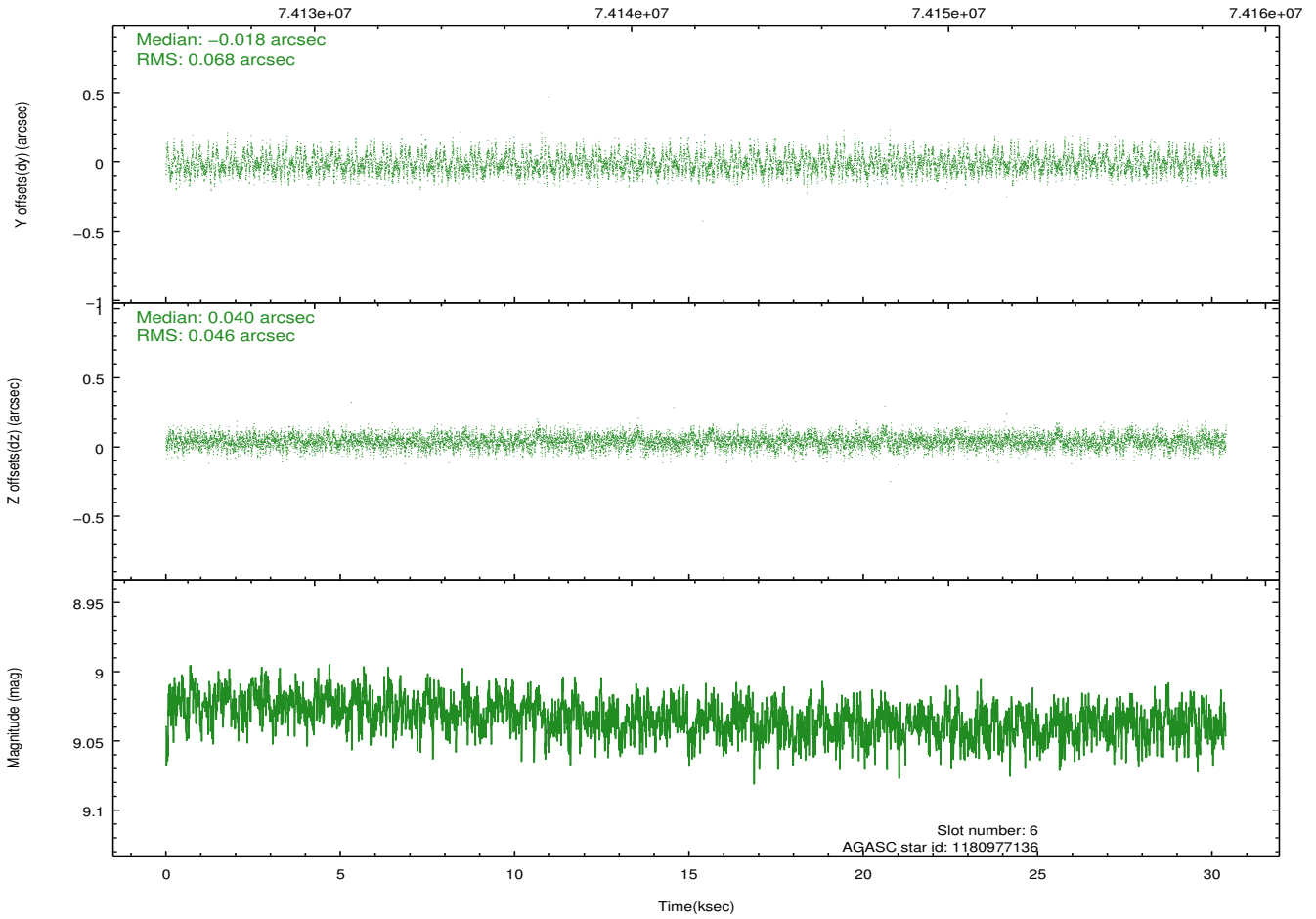
2.4.3 Slot 5



2.4.4 Slot 6

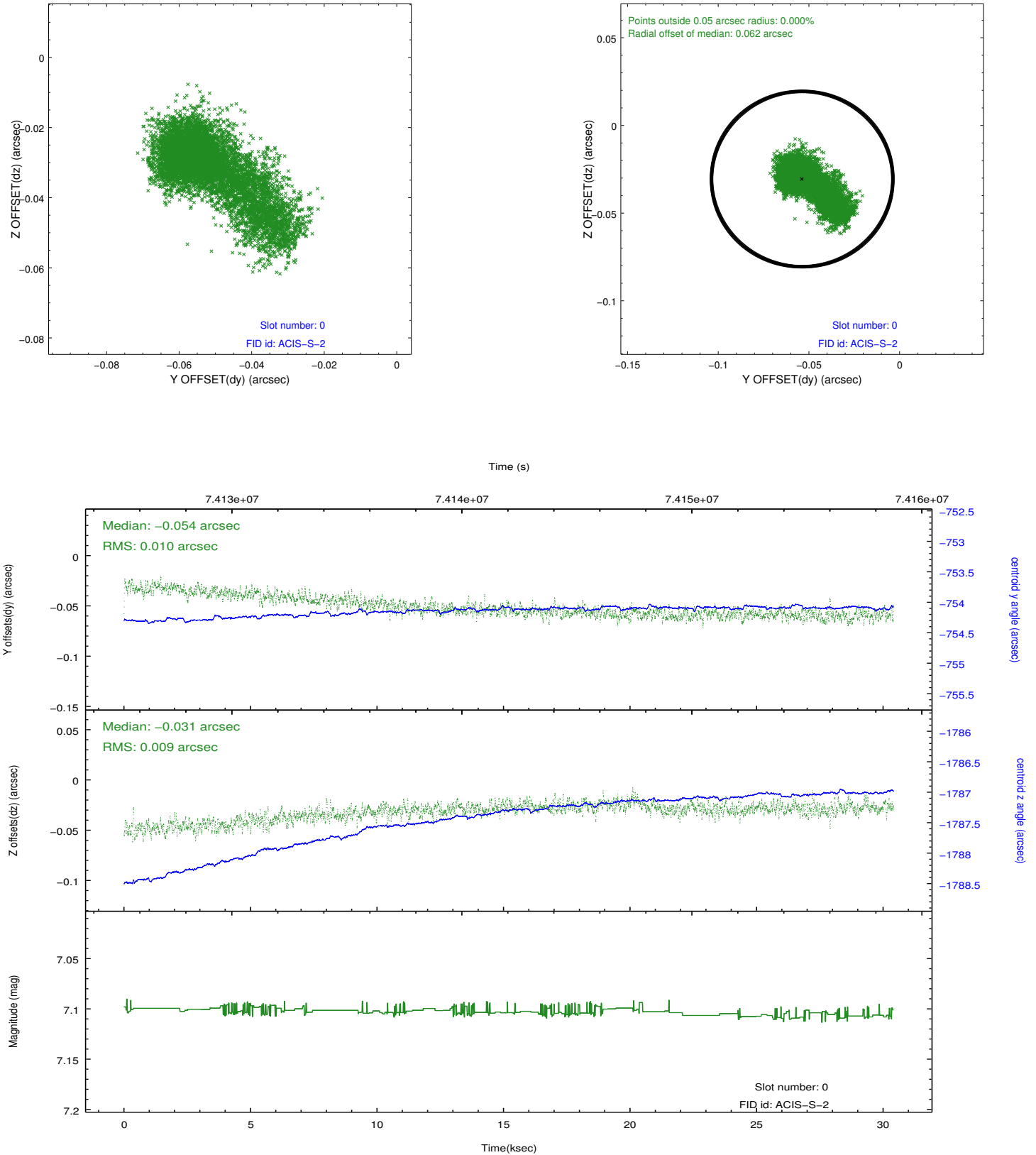


Time (s)

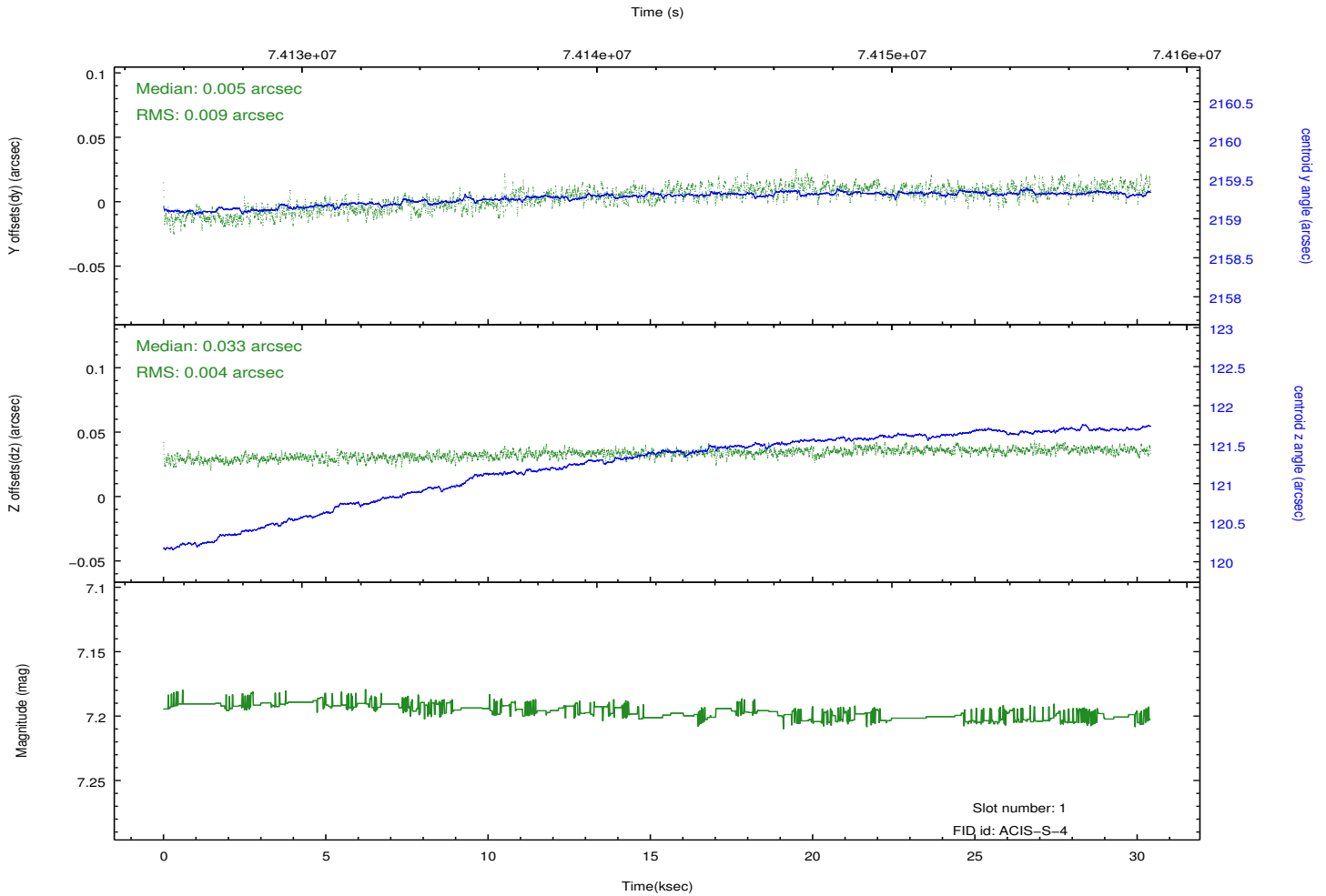
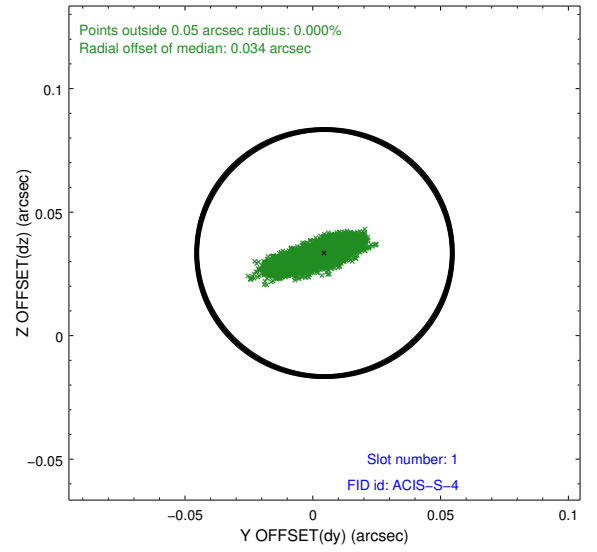
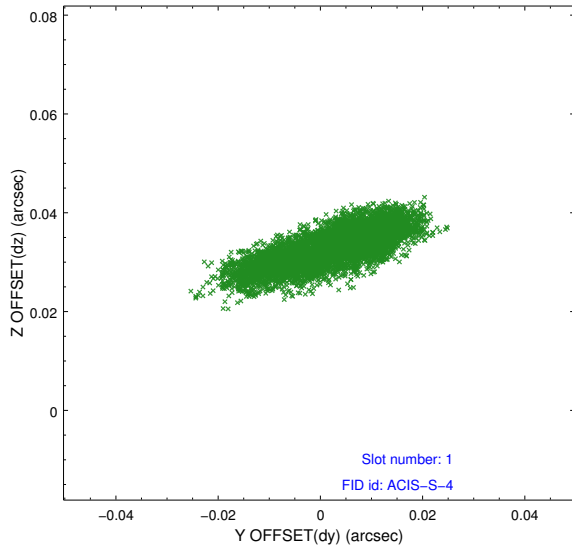


2.5 FID Slots

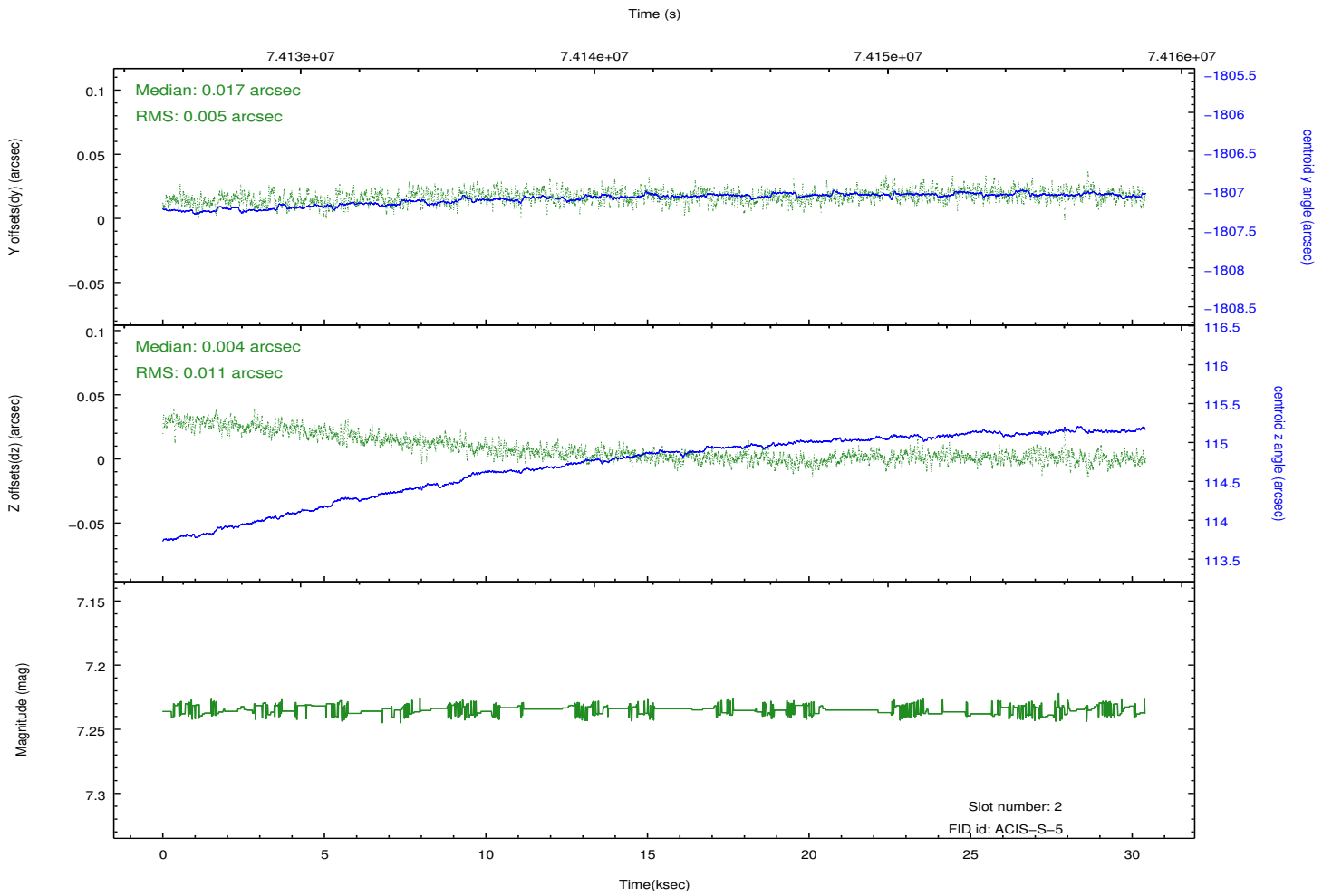
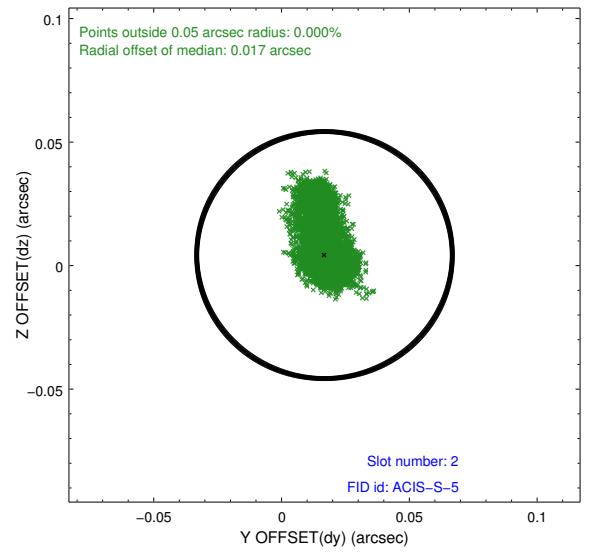
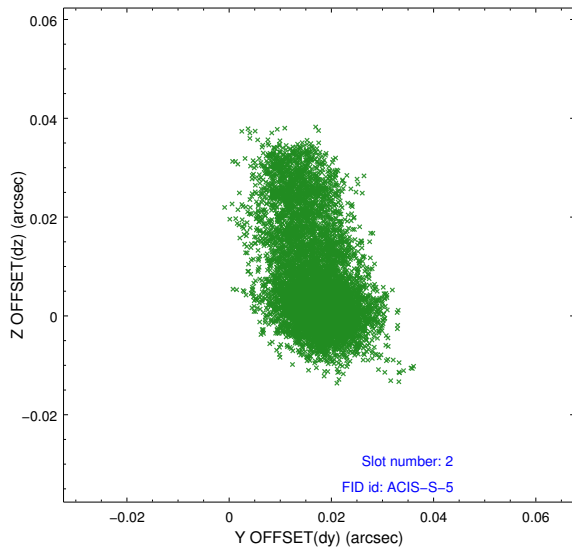
2.5.1 Slot 0



2.5.2 Slot 1



2.5.3 Slot 2



A Summary

A.1 Status

V&V Scientist	Jen Lauer
V&V Date (YYYY-MM-DD)	2012.08.29
V&V Edition	1
V&V Disposition and Status	OK
V&V Charge Time	29.856

A.2 Comments

Slot 7 is used as a monitor star.