

V&V Reference Report

L2 ASCDS Version : 8.5

Observation 5359 - L2 Version 3
Chandra X-Ray Center

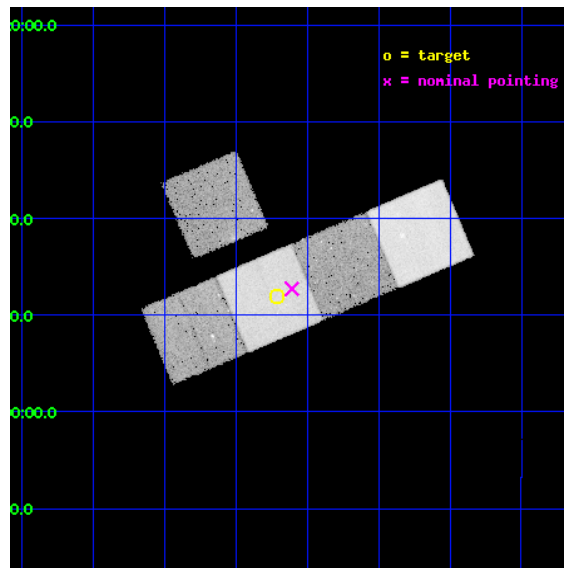
L2 Processing Date : Dec 7 2012

Contents

1	Front	2
2	OBI	3
2.1	OBI	3
2.1.1	Images	3
2.1.2	Bias	3
2.1.3	Parameters	4
2.1.4	Events	4
2.2	Compared Parameters	5
2.3	Aspect	6
2.4	Star Slots	9
2.4.1	Slot 3	9
2.4.2	Slot 4	10
2.4.3	Slot 5	11
2.4.4	Slot 6	12
2.4.5	Slot 7	13
2.5	FID Slots	14
2.5.1	Slot 0	14
2.5.2	Slot 1	15
2.5.3	Slot 2	16
A	Summary	17
A.1	Status	17
A.2	Comments	17

1 Front

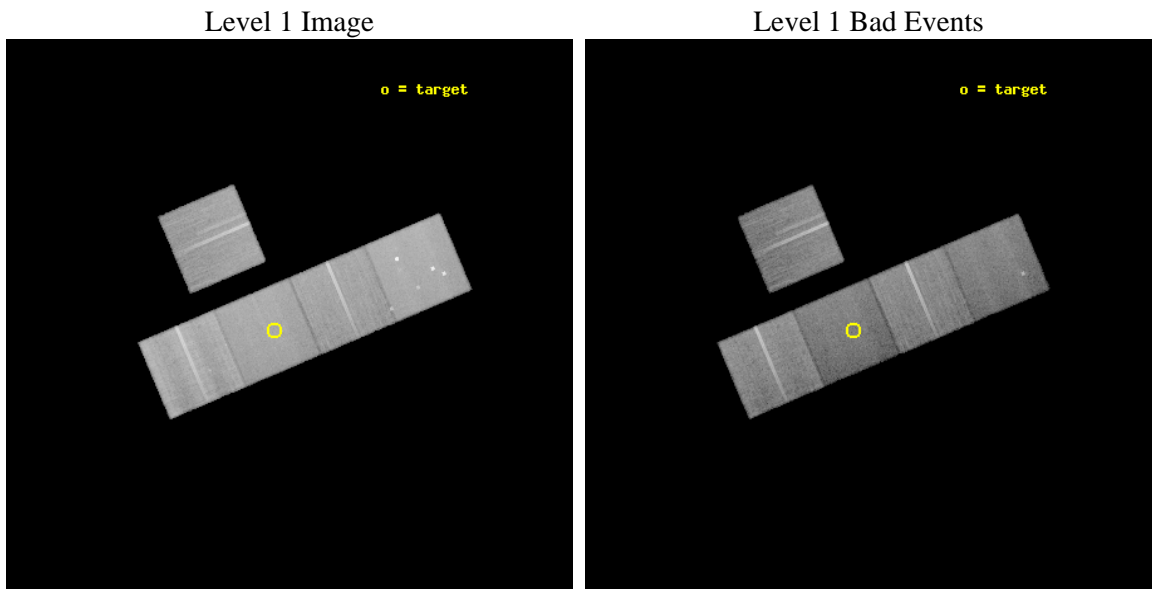
seq_num	800388	Sequence number
obs_id	5359	Observation id
title	Continuation of a Chandra Survey of a Uniformly Selected Sample of High-Redshift Galaxy Clusters	Proposal title
observer	Professor Gordon Garmire	Principal investigator
object	RCS2156.7-0448	Source name
dtcycle	0	
cycle	P	events from which exps? Prim/Second/Both
ra_targ	329.177917	Observer's specified target RA [deg]
dec_targ	-4.801167	Observer's specified target Dec [deg]
ra_nom	329.15179708994	Nominal RA [deg]
dec_nom	-4.7882127053111	Nominal Dec [deg]
roll_nom	156.95725033767	Nominal Roll [deg]
revision	3	Processing version of data
ontime	35160.199932367	Sum of GTIs [s]
livetime	34700.806035688	Livetime [s]
ontime3	35160.199932367	Sum of GTIs [s]
ontime5	35160.199932367	Sum of GTIs [s]
ontime6	35160.199932367	Sum of GTIs [s]
ontime7	35160.199932367	Sum of GTIs [s]
ontime8	35147.635991484	Sum of GTIs [s]
l2events	304898	Number of level 2 events



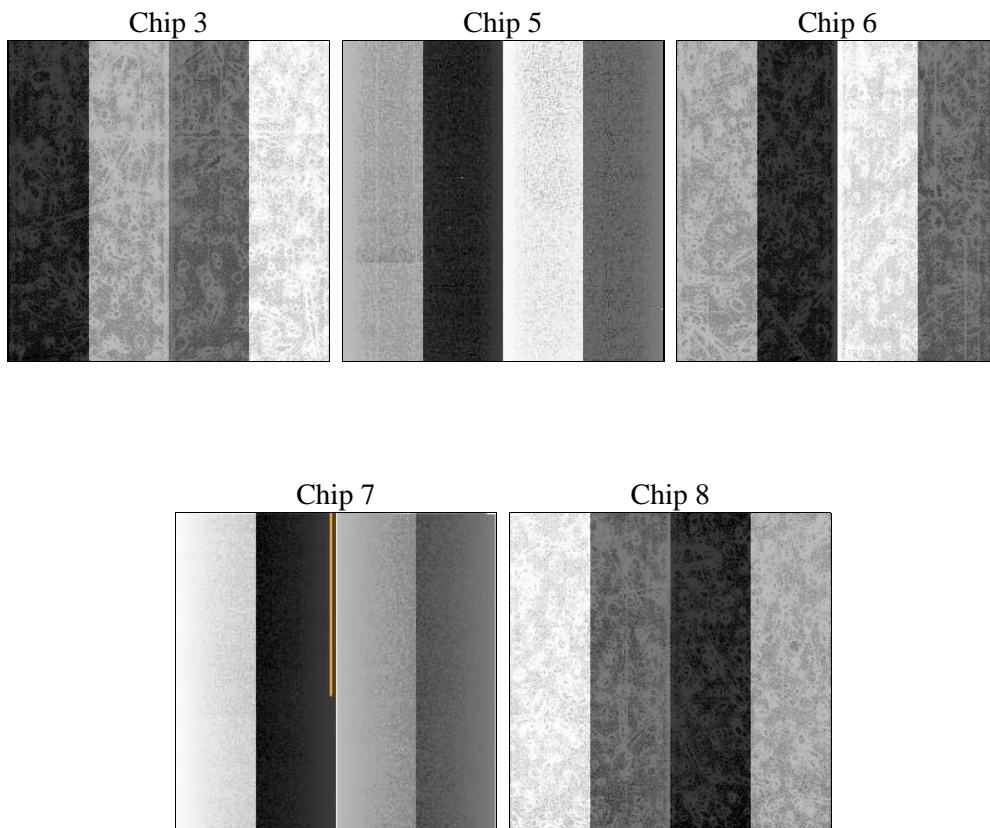
2 OBI

2.1 OBI

2.1.1 Images



2.1.2 Bias



2.1.3 Parameters

obi_num	0	Obi number	sched_exp_time	35000.000000	[s] Scheduled observation exposure time
ascdsver	8.5	Processing system revision	ontime	35160.199932367	Sum of GTIs [s]
caldsver	4.5.4	 	ontime3	35160.199932367	Sum of GTIs [s]
date	2012-12-07T16:55:45	Date and time of file creation	ontime5	35160.199932367	Sum of GTIs [s]
revision	3	Processing version of data	ontime6	35160.199932367	Sum of GTIs [s]
			ontime7	35160.199932367	Sum of GTIs [s]
			ontime8	35147.635991484	Sum of GTIs [s]
			l1events	1330356	Number of level 1 events

2.1.4 Events

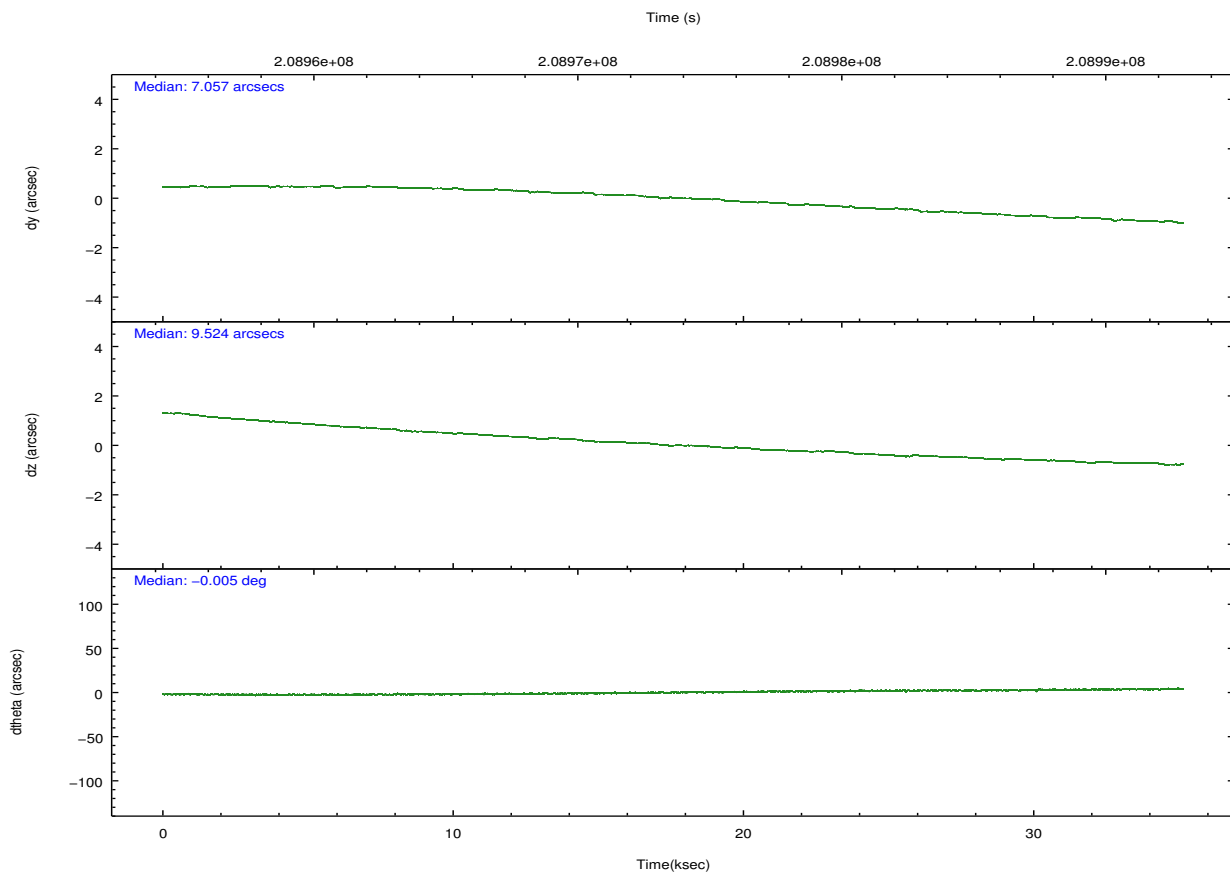
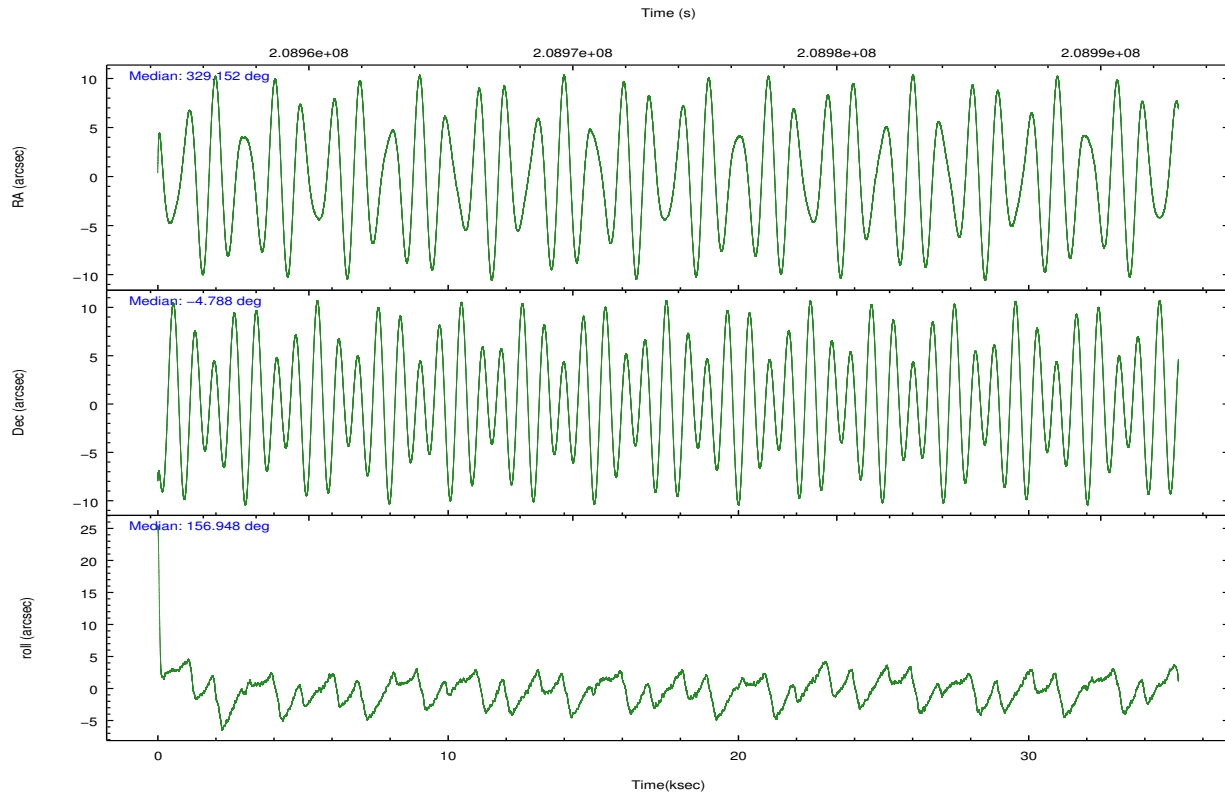
	ccd 3	ccd 5	ccd 6	ccd 7	ccd 8
level 1 events	224507	315454	236876	247472	306047
rejected events	203770	158989	213716	139125	223773
rejected %	90%	50%	90%	56%	73%

	ccd 3	ccd 5	ccd 6	ccd 7	ccd 8
grade 0 events	7792	23737	8464	10002	27514
	3%	7%	3%	4%	8%
grade 1 events	119	303	103	220	286
	0%	0%	0%	0%	0%
grade 2 events	4499	44957	5163	22147	15521
	2%	14%	2%	8%	5%
grade 3 events	2435	7182	2651	10746	11510
	1%	2%	1%	4%	3%
grade 4 events	2411	6895	2609	10511	10508
	1%	2%	1%	4%	3%
grade 5 events	8702	24884	8978	26333	12912
	3%	7%	3%	10%	4%
grade 6 events	4166	78041	4898	57894	19444
	1%	24%	2%	23%	6%
grade 7 events	194383	129455	204010	109619	208352
	86%	41%	86%	44%	68%

2.2 Compared Parameters

Parameter	Planned	Actual	Parameter	Planned	Actual
Instrument	ACIS	ACIS	Obspar format version number	7	7
Detector	ACIS-35678	ACIS-35678	Obspar file type	PREDICTED	ACTUAL
Grating	NONE	NONE	Obspar update status	NONE	UPDATED
Data mode	VFAINT	VFAINT	Number of optional ACIS chips dropped	0	0
Observation mode	POINTING	POINTING	On-chip summing requested	N	N
[deg] Pointing RA	329.178882	329.1517970899402	Subarray requested	NONE	NONE
[deg] Pointing Dec	-4.784535	-4.788212705311142	Alternating exposures requested	N	N
[deg] Pointing Roll	156.802873	156.9572503376685	[s] Primary exposure time	0.000000	3.1
[mm] SIM focus pos	-0.684267	-0.6828225247311905			
[mm] SIM defocus	0	0.001444936568705701			
[mm] SIM translation stage pos	-190.132523	-190.1425803651734			
[mm] SIM translation stage offset	0	0.01005778216563158			
[s] Observation start time (MET)	208956191.184000	208954718.36341			
Observation start date	2004-08-15T11:22:07	2004-08-15T10:58:38			
[s] Observation end time (MET)	208991191.184000	208992432.72759			
Observation end date	2004-08-15T21:05:27	2004-08-15T21:27:12			
Read mode	TIMED	TIMED			

2.3 Aspect

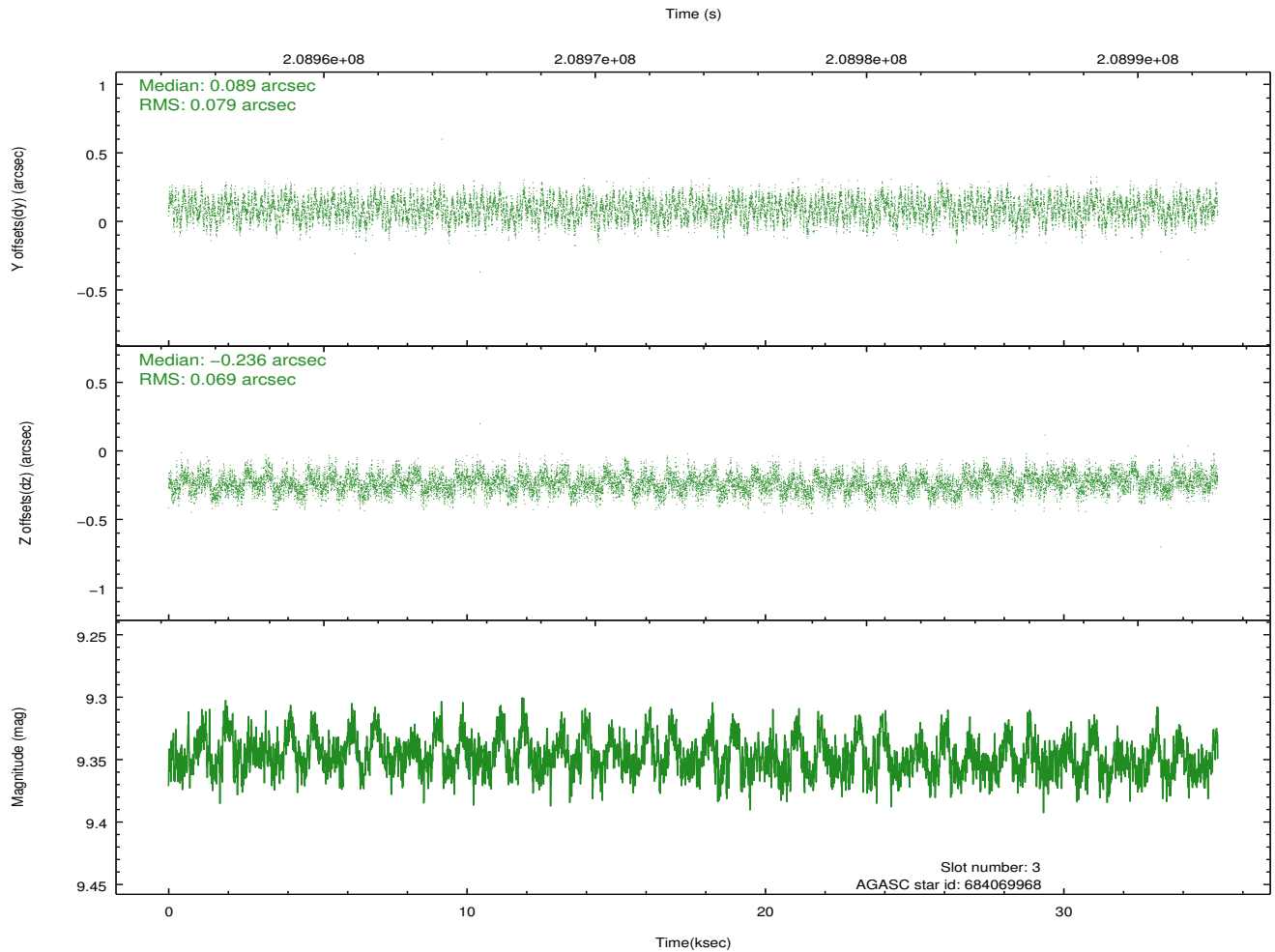
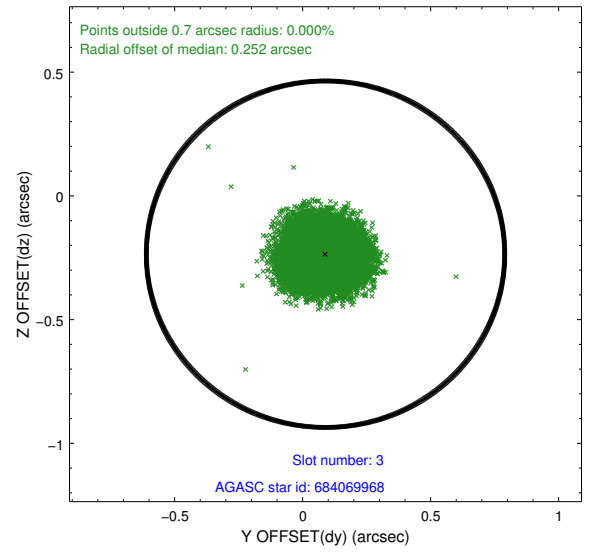
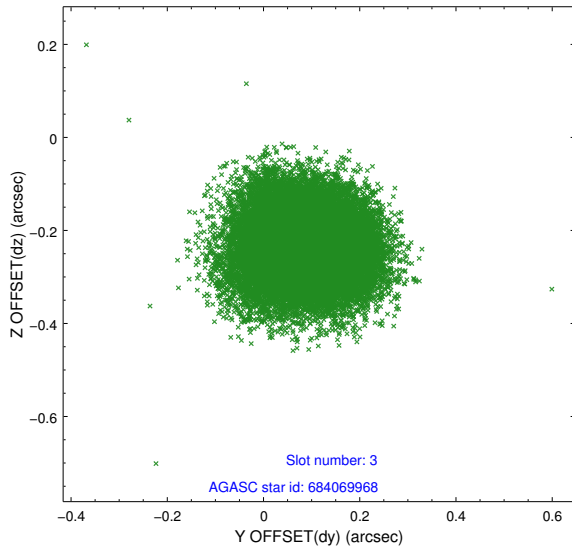


Slot Statistics

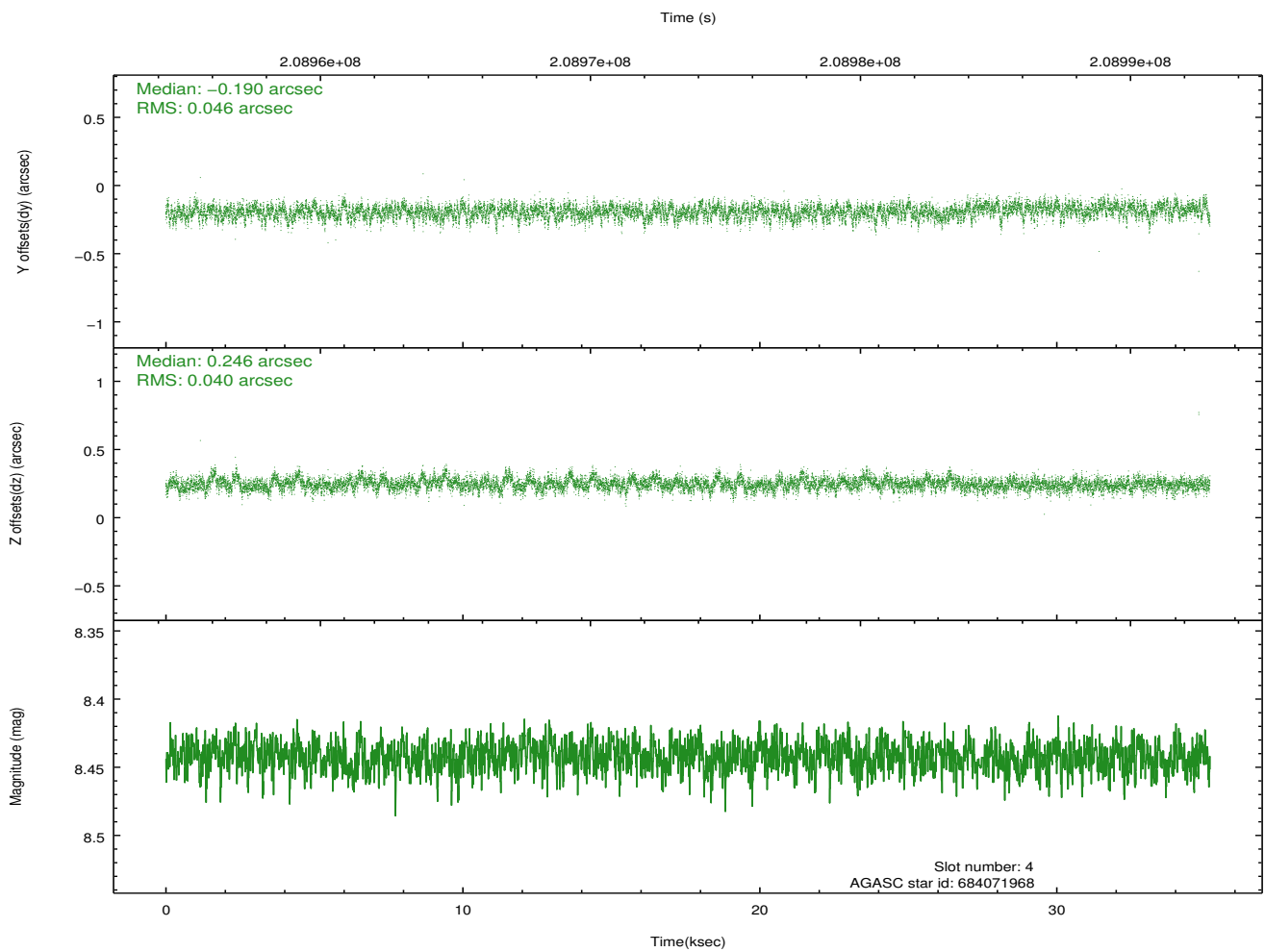
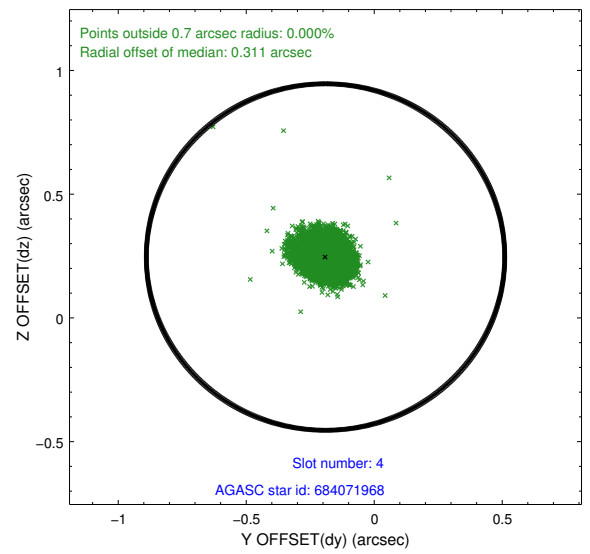
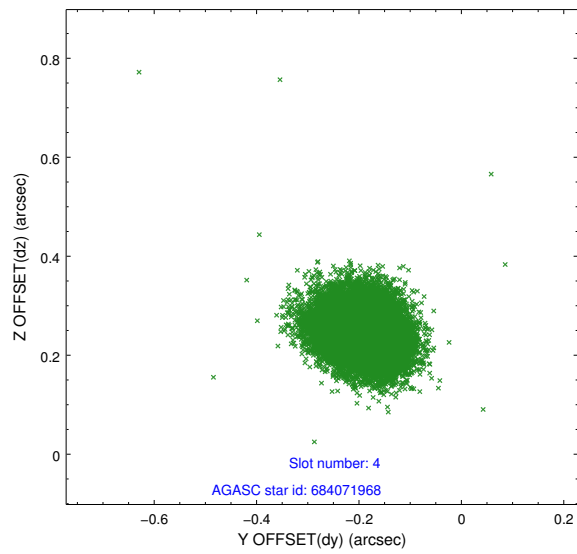
slot	status	id	mag	n_pts	med_dy	med_dz	dr1	dr2	ra	dec	mean_y	mean_z
0	FID	ACIS-S-2	7.10	8576	-0.047	-0.032	0.018	0.029	0.000000	0.000000	-759.76	-1730.84
1	FID	ACIS-S-4	7.20	8577	0.083	0.031	0.012	0.024	0.000000	0.000000	2153.61	177.69
2	FID	ACIS-S-5	7.23	8576	-0.069	0.010	0.014	0.022	0.000000	0.000000	-1812.59	171.35
3	GUIDE	684069968	9.35	17148	0.089	-0.236	0.115	0.174	329.097555	-5.451643	-678.23	2322.15
4	GUIDE	684071968	8.44	17147	-0.190	0.246	0.064	0.104	328.900116	-4.224267	1714.56	-1458.62
5	GUIDE	684072512	8.37	17150	0.068	-0.020	0.067	0.108	329.504581	-5.204185	-1669.03	929.06
6	GUIDE	684072928	8.78	17137	0.047	-0.036	0.104	0.170	328.879561	-3.936284	2191.21	-2382.17
7	GUIDE	684072952	8.58	17145	-0.016	0.043	0.073	0.114	329.874004	-4.607653	-2041.94	-1566.99

2.4 Star Slots

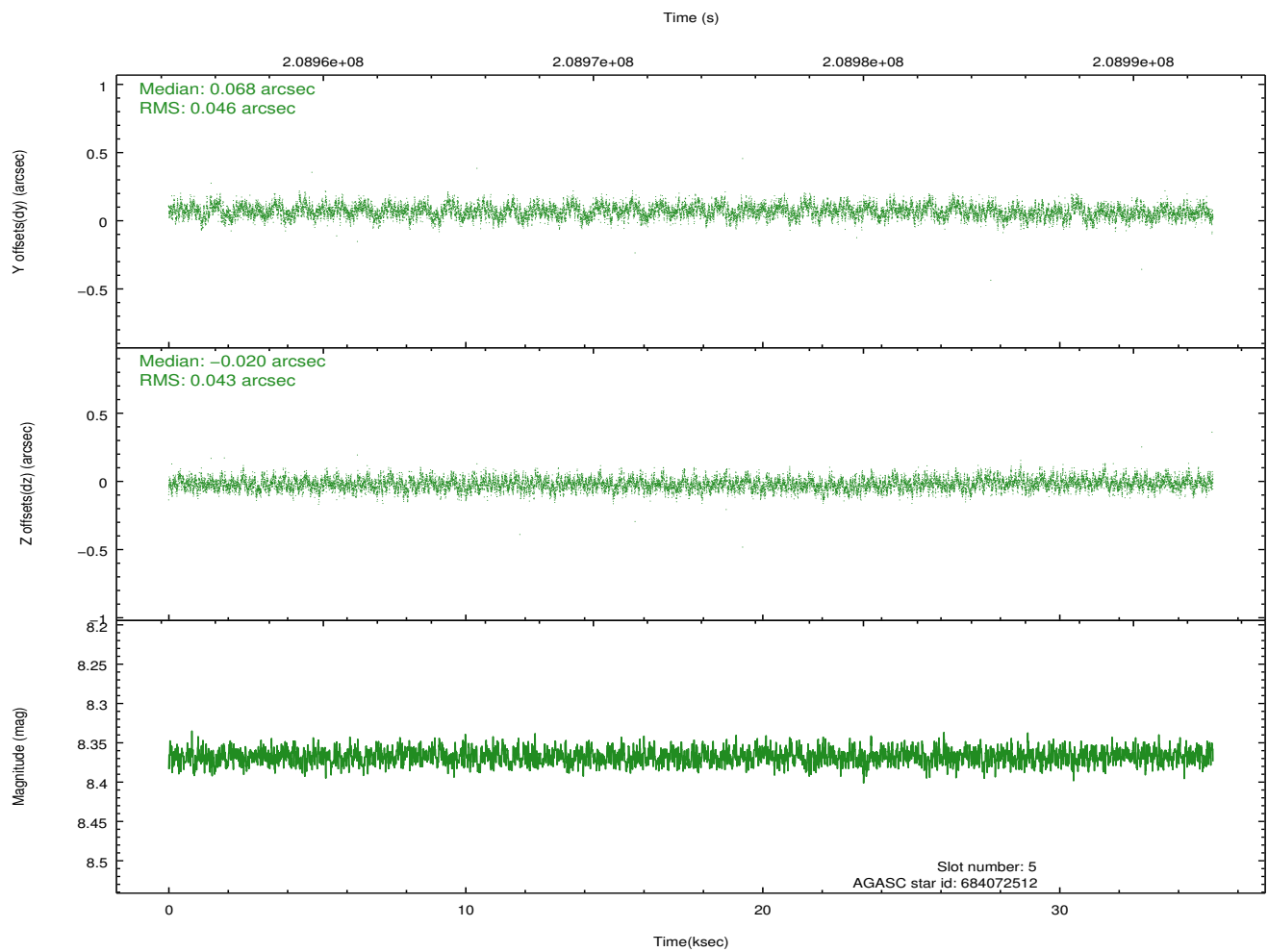
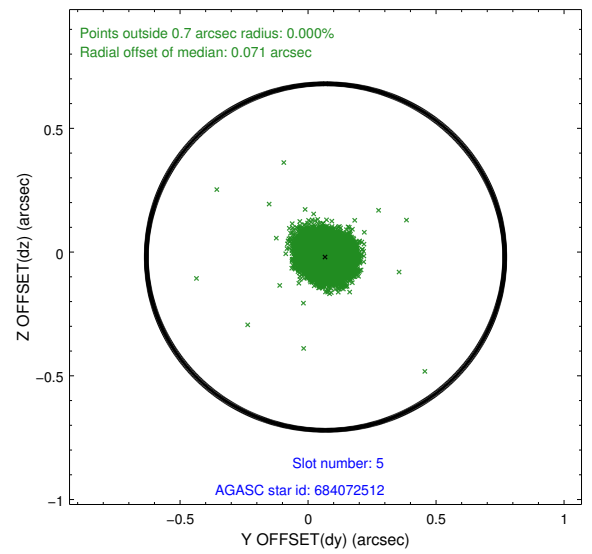
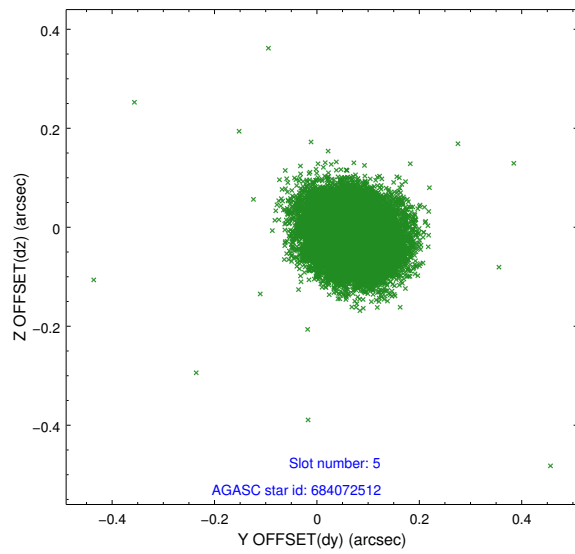
2.4.1 Slot 3



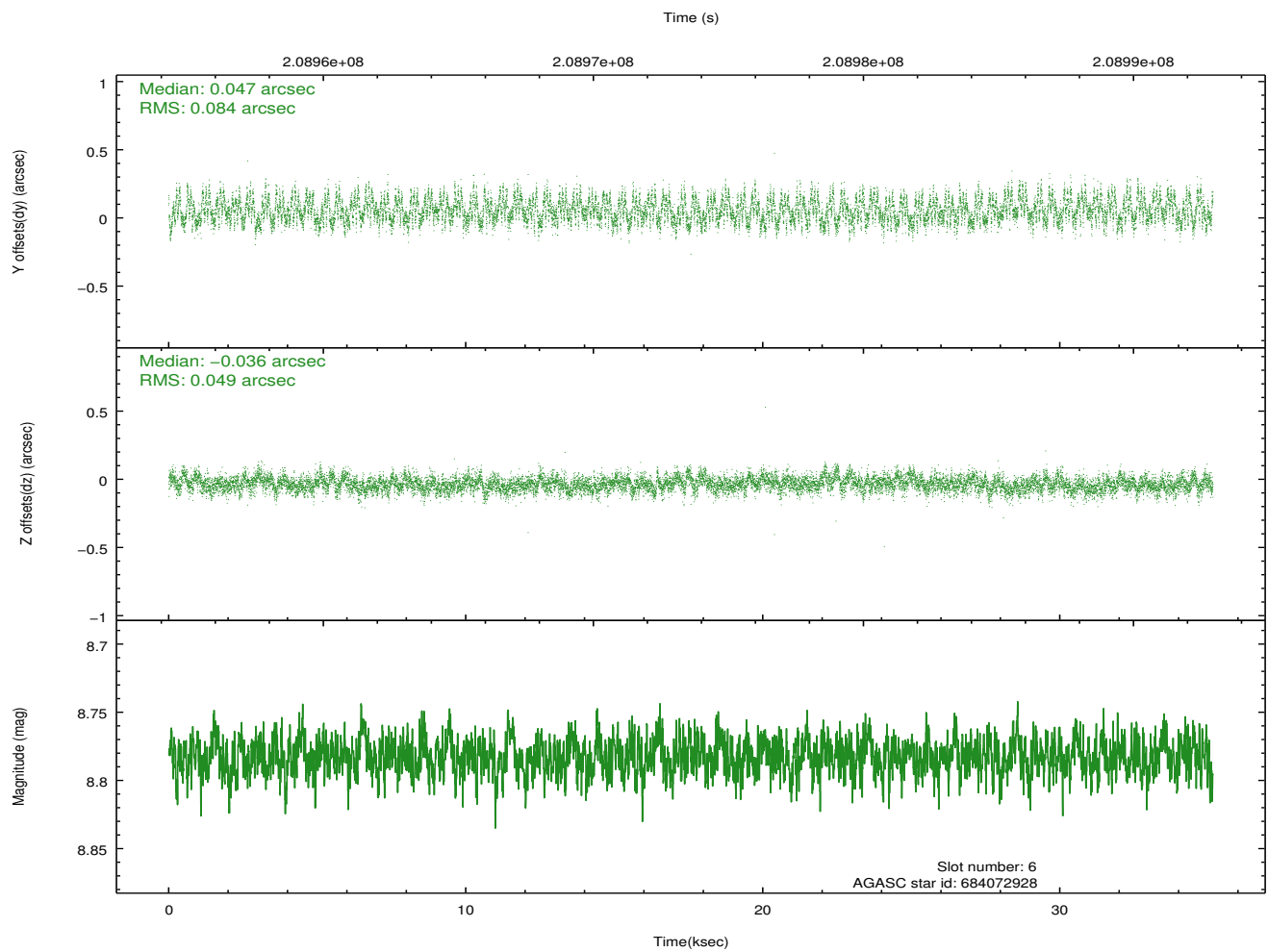
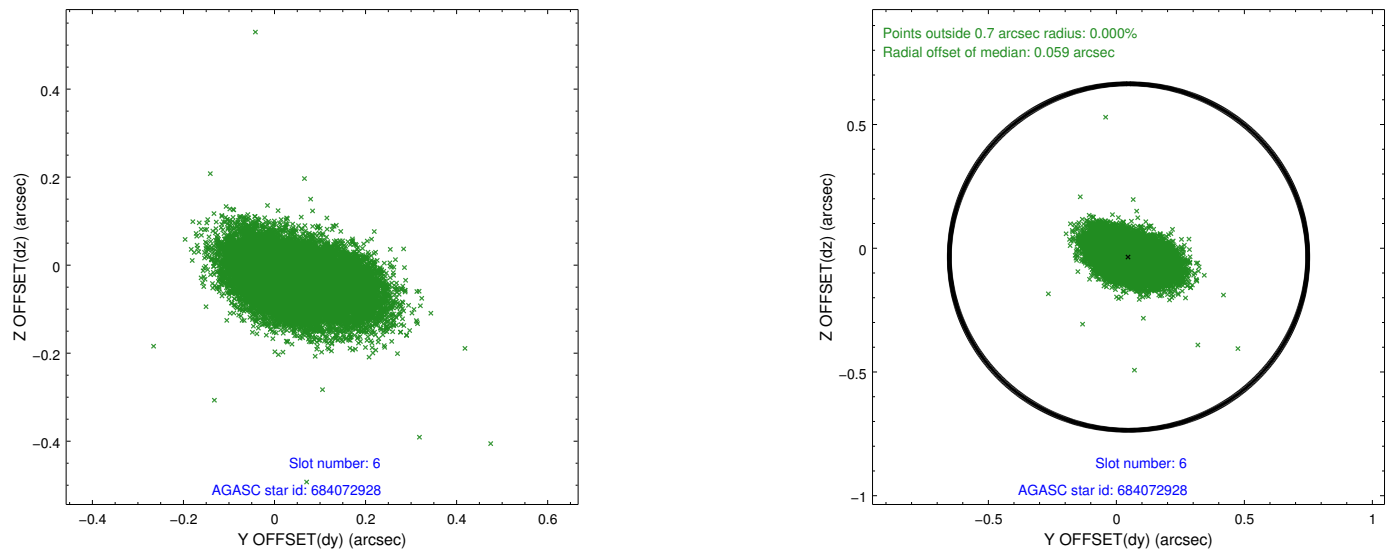
2.4.2 Slot 4



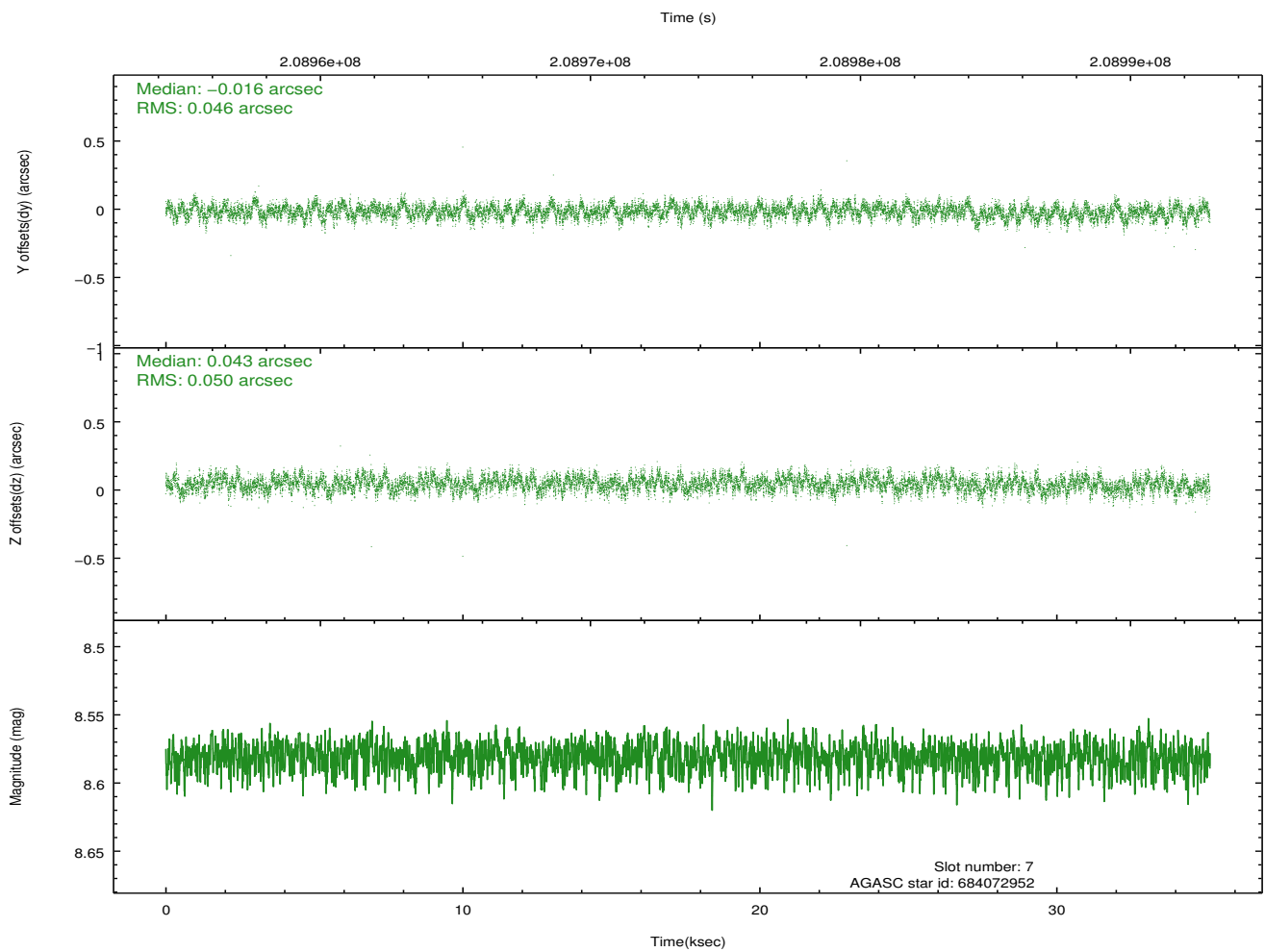
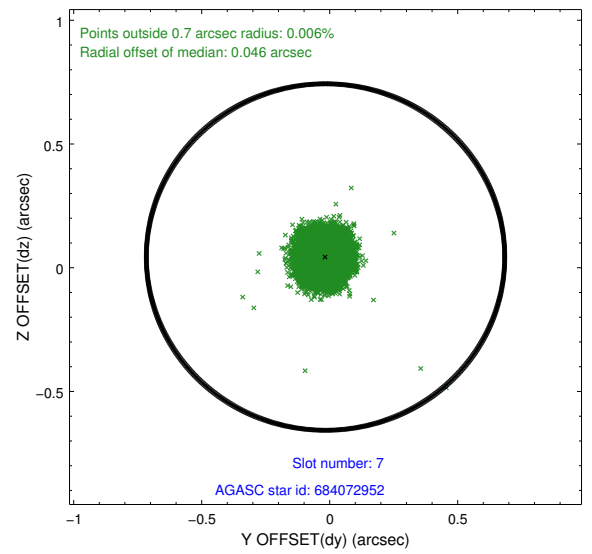
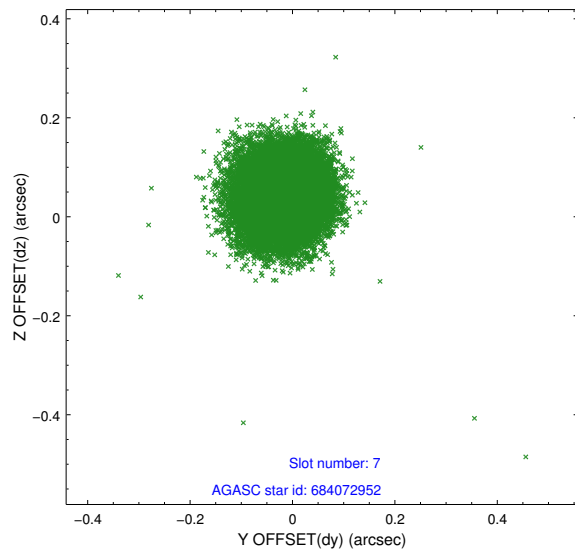
2.4.3 Slot 5



2.4.4 Slot 6

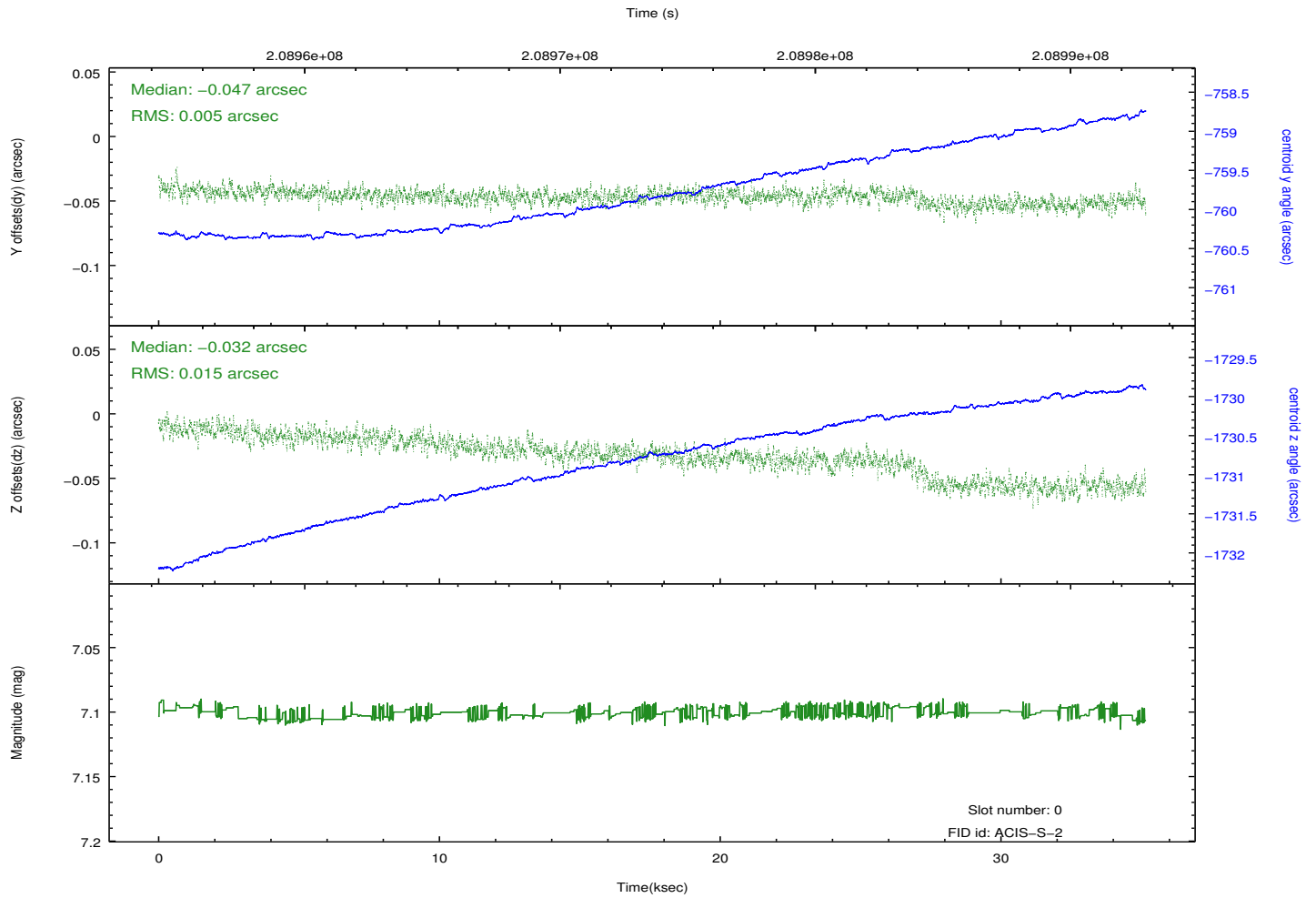
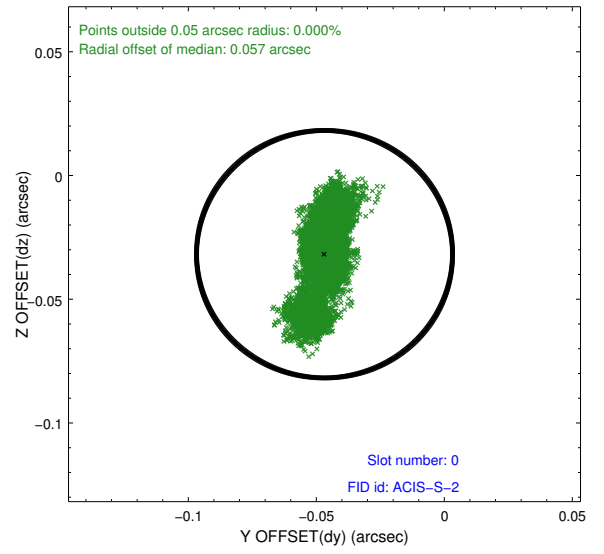
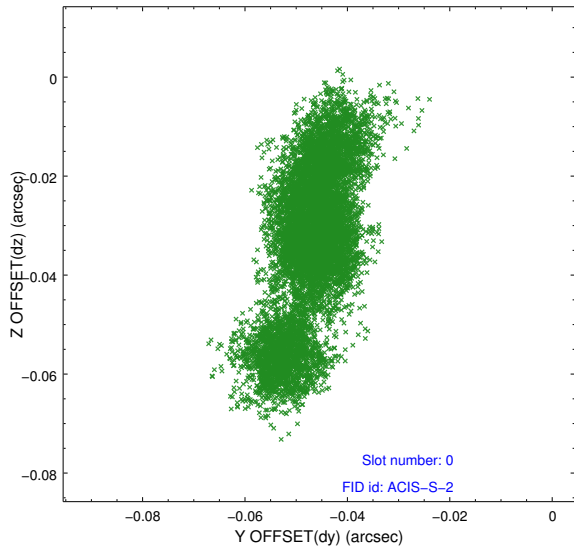


2.4.5 Slot 7

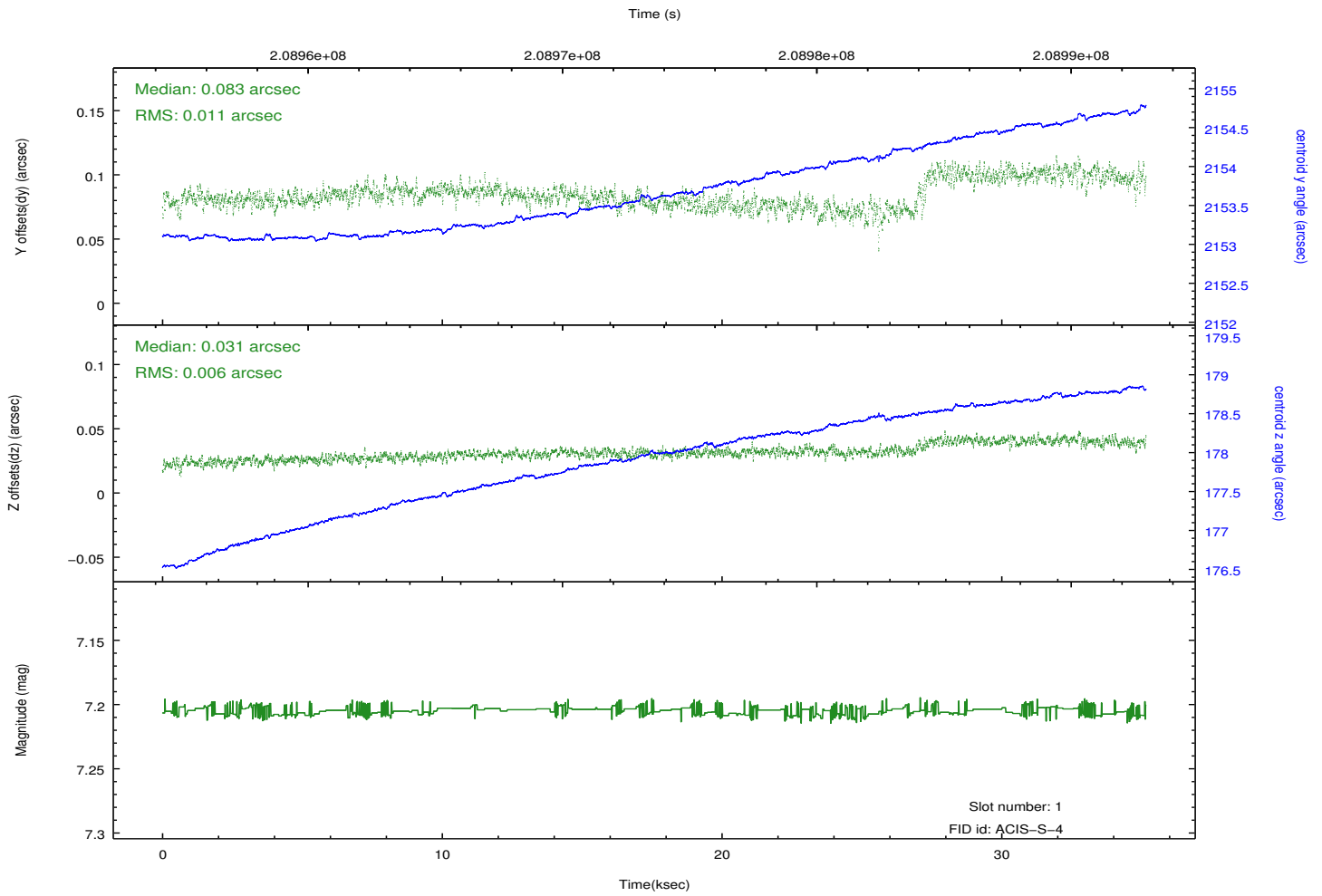
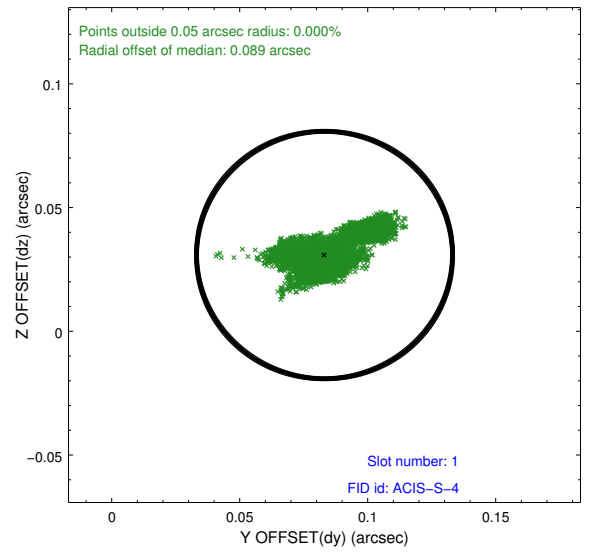
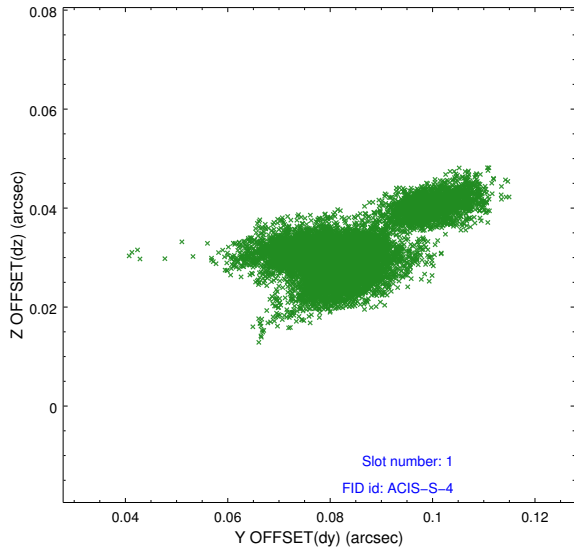


2.5 FID Slots

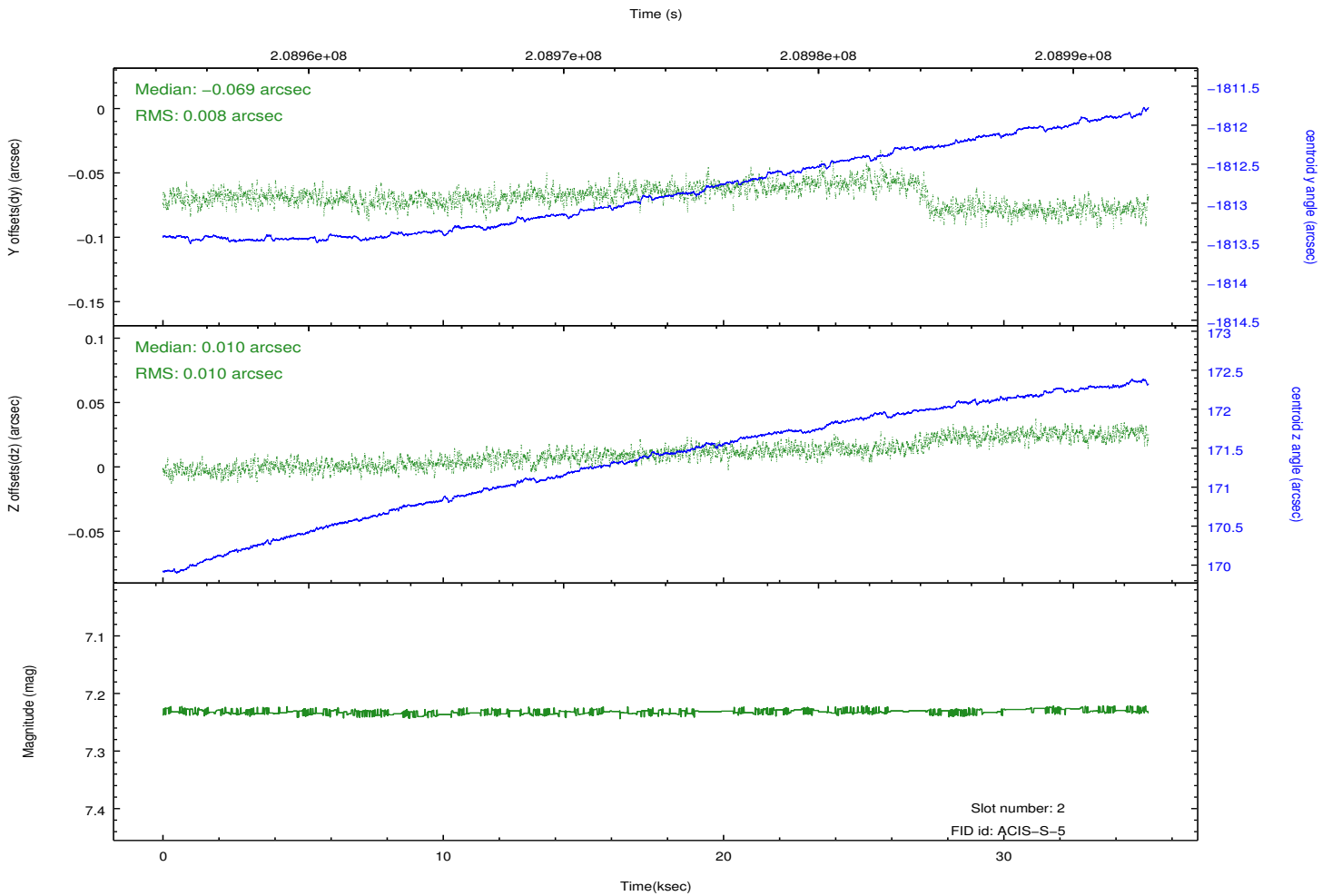
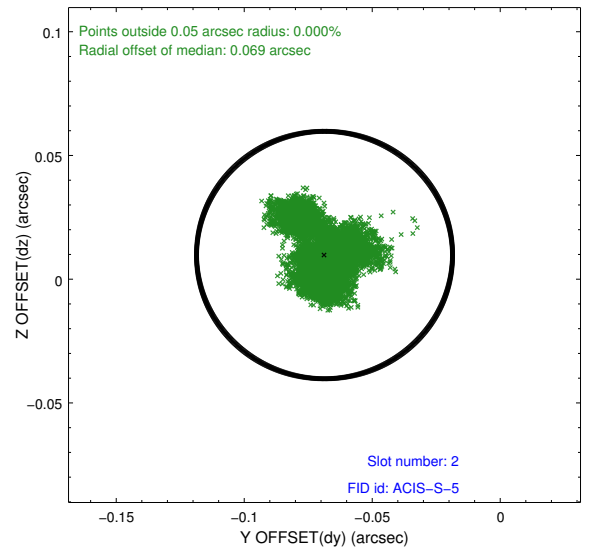
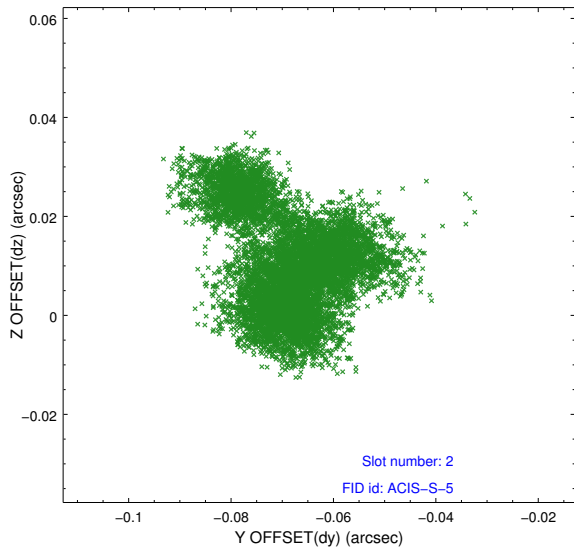
2.5.1 Slot 0



2.5.2 Slot 1



2.5.3 Slot 2



A Summary

A.1 Status

V&V Scientist	Jen Lauer
V&V Date (YYYY-MM-DD)	2012.12.21
V&V Edition	1
V&V Disposition and Status	OK
V&V Charge Time	35.16

A.2 Comments