

# V&V Reference Report

## L2 ASCDS Version : 8.5.1

Observation 5429 - L2 Version 3  
Chandra X-Ray Center

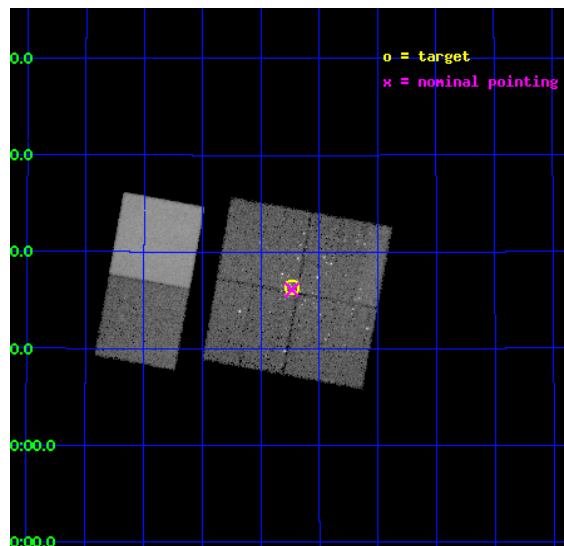
L2 Processing Date : Dec 18 2012

## Contents

<b>1</b>	<b>Front</b>	<b>2</b>
<b>2</b>	<b>OBI</b>	<b>3</b>
2.1	OBI . . . . .	3
2.1.1	Images . . . . .	3
2.1.2	Bias . . . . .	3
2.1.3	Parameters . . . . .	4
2.1.4	Events . . . . .	4
2.2	Compared Parameters . . . . .	5
2.3	Aspect . . . . .	6
2.4	Star Slots . . . . .	9
2.4.1	Slot 3 . . . . .	9
2.4.2	Slot 4 . . . . .	10
2.4.3	Slot 5 . . . . .	11
2.4.4	Slot 6 . . . . .	12
2.4.5	Slot 7 . . . . .	13
2.5	FID Slots . . . . .	14
2.5.1	Slot 0 . . . . .	14
2.5.2	Slot 1 . . . . .	15
2.5.3	Slot 2 . . . . .	16
<b>A</b>	<b>Summary</b>	<b>17</b>
A.1	Status . . . . .	17
A.2	Comments . . . . .	17

# 1 Front

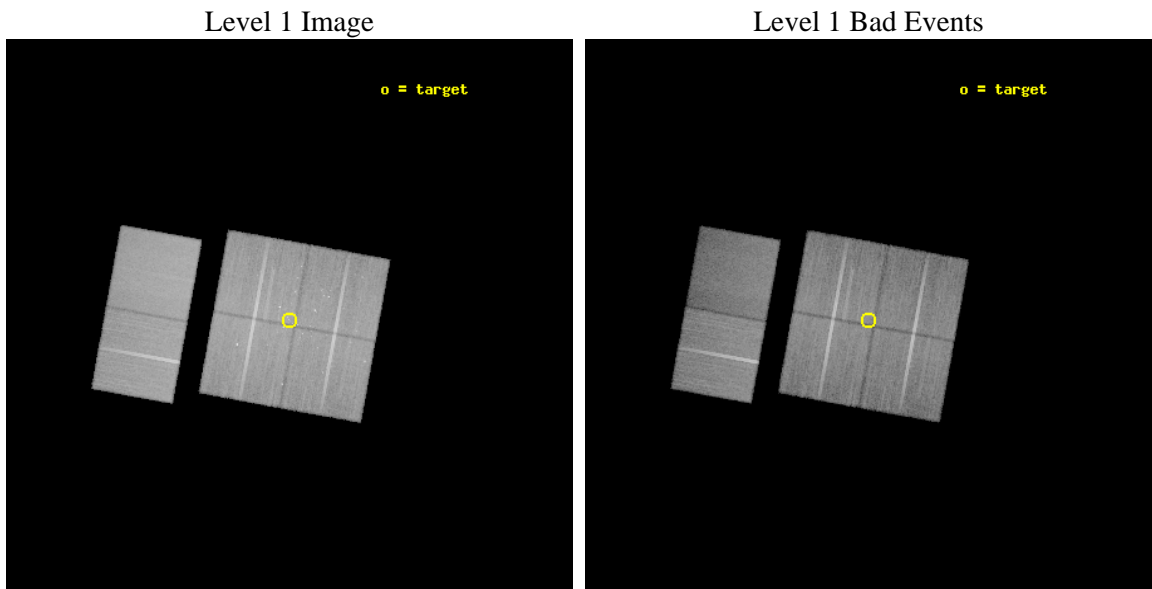
seq_num	200362	Sequence number
obs_id	5429	Observation id
title	Multi-Wavelength Signatures of Magnetic Activity in the Star-Forming Region around LkHa101	Proposal title
observer	Dr. Scott Wolk	Principal investigator
object	LkHa101 cluster	Source name
dtcycle	0	&#160
cycle	P	events from which exps? Prim/Second/Both
ra_targ	67.56	Observer's specified target RA [deg]
dec_targ	35.272833	Observer's specified target Dec [deg]
ra_nom	67.558747801631	Nominal RA [deg]
dec_nom	35.268293771101	Nominal Dec [deg]
roll_nom	280.33395634152	Nominal Roll [deg]
revision	3	Processing version of data
ontime	40159.999850392	Sum of GTIs [s]
livetime	39651.469750838	Livetime [s]
ontime0	40159.999850392	Sum of GTIs [s]
ontime1	40159.999850392	Sum of GTIs [s]
ontime2	40156.758880079	Sum of GTIs [s]
ontime3	40159.999850392	Sum of GTIs [s]
ontime6	40159.999850392	Sum of GTIs [s]
ontime7	40159.999850392	Sum of GTIs [s]
l2events	234826	Number of level 2 events



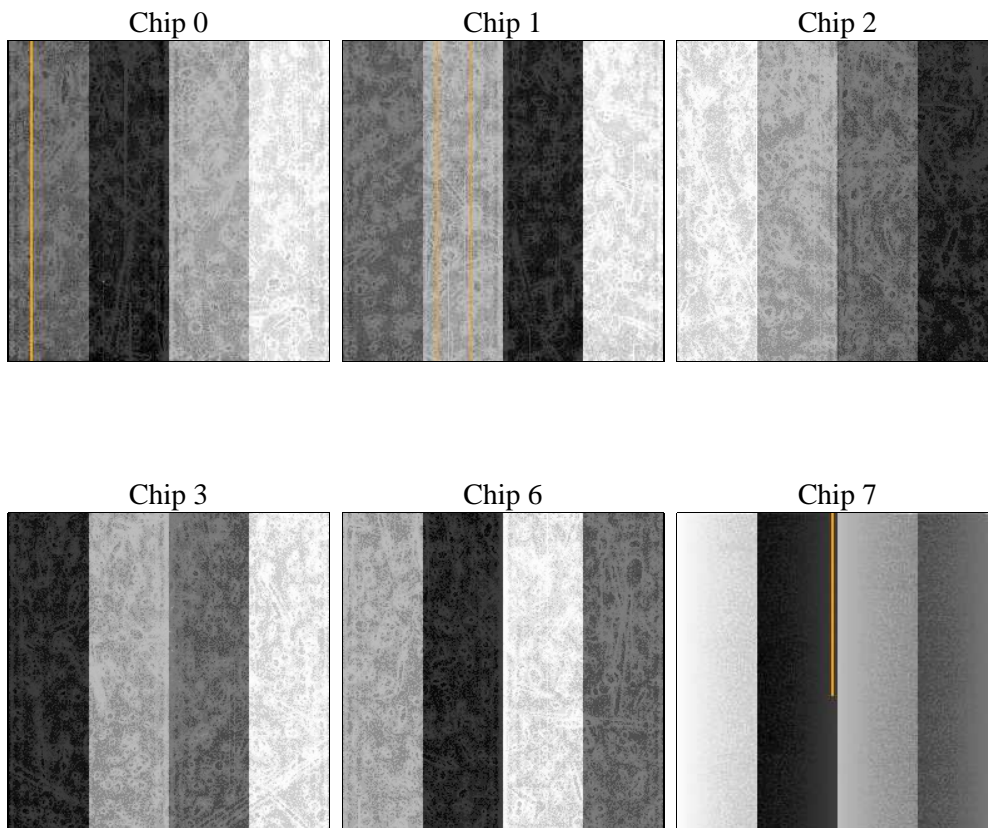
## 2 OBI

### 2.1 OBI

#### 2.1.1 Images



#### 2.1.2 Bias



### 2.1.3 Parameters

obi_num	0	Obi number	sched_exp_time	40000.000000	[s] Scheduled observation exposure time
ascdsver	8.5.1	Processing system revision	ontime	40159.999850392	Sum of GTIs [s]
caldbver	4.5.5	&#160	ontime0	40159.999850392	Sum of GTIs [s]
date	2012-12-18T07:02:10	Date and time of file creation	ontime1	40159.999850392	Sum of GTIs [s]
revision	3	Processing version of data	ontime2	40156.758880079	Sum of GTIs [s]
			ontime3	40159.999850392	Sum of GTIs [s]
			ontime6	40159.999850392	Sum of GTIs [s]
			ontime7	40159.999850392	Sum of GTIs [s]
			l1events	1525823	Number of level 1 events

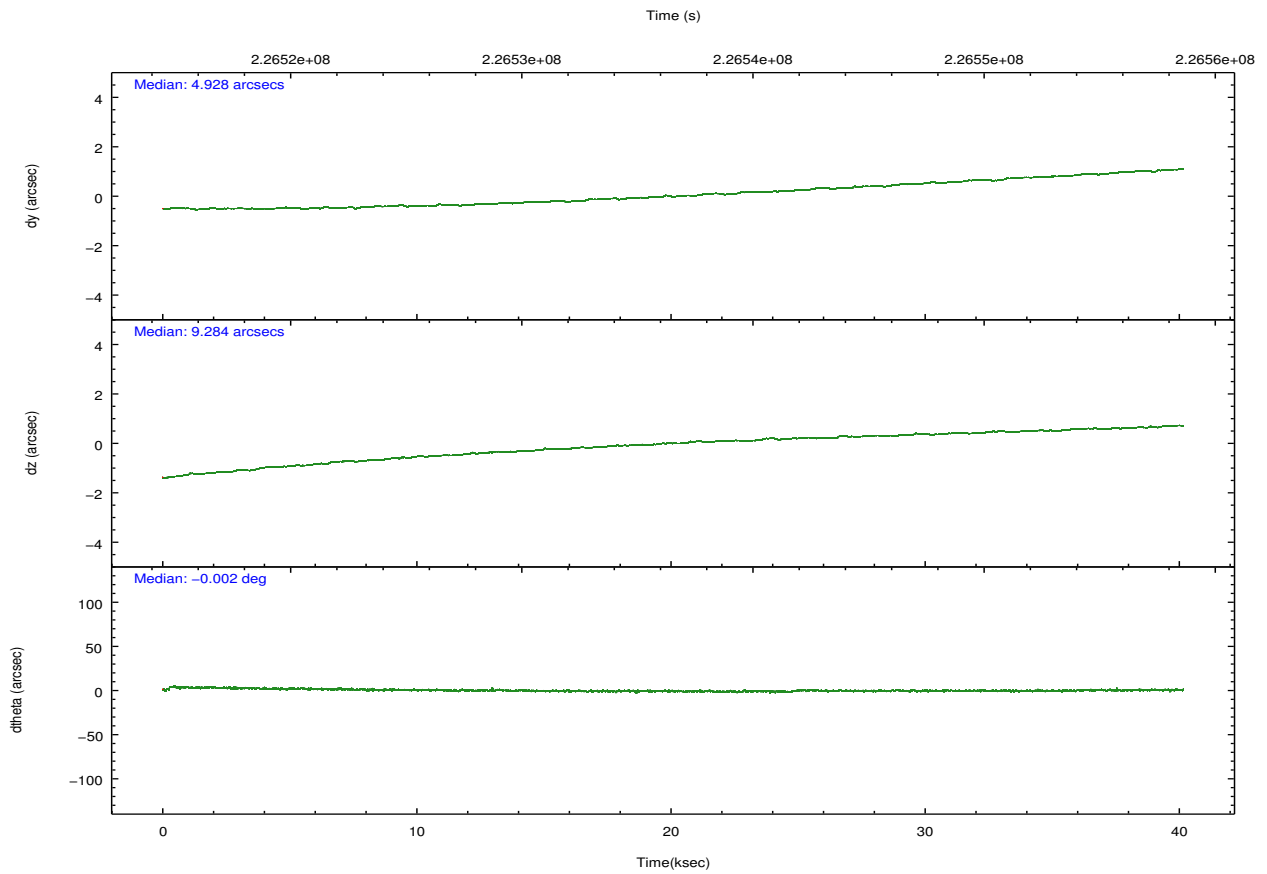
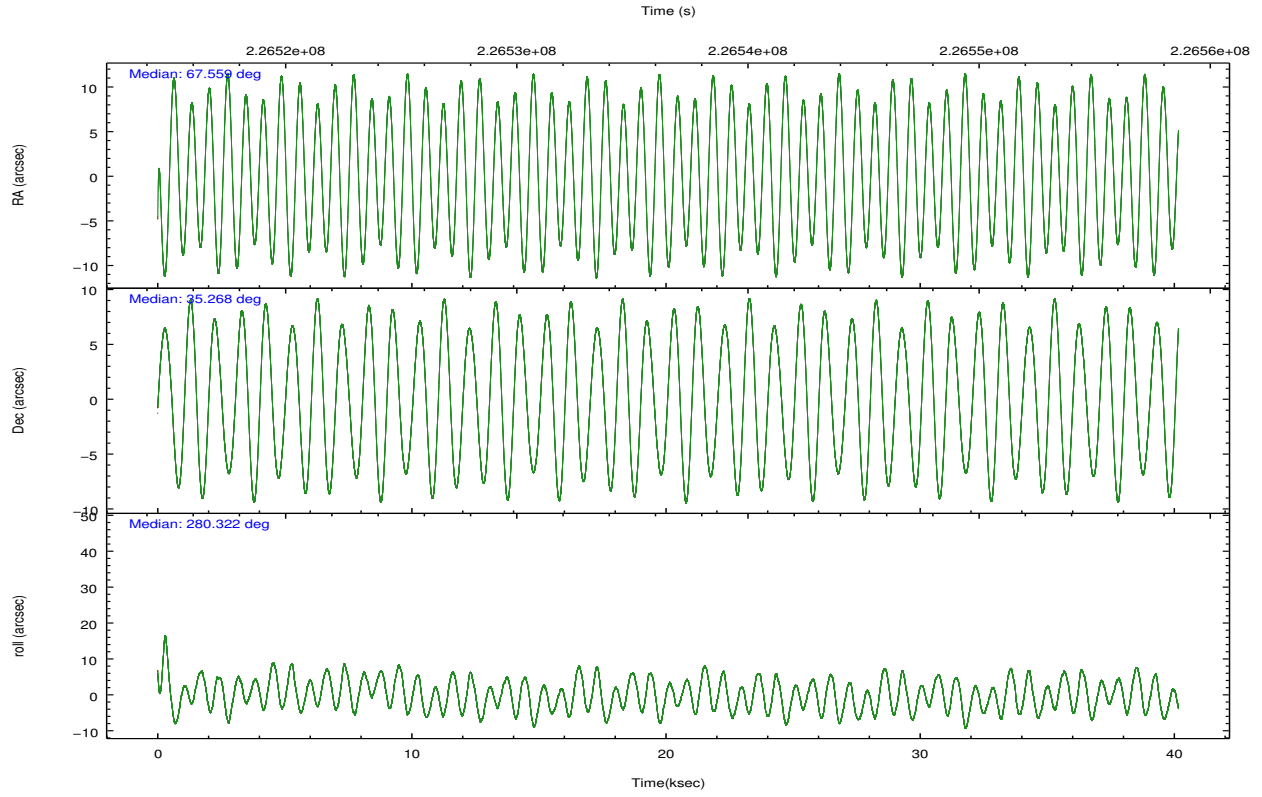
### 2.1.4 Events

	ccd 0	ccd 1	ccd 2	ccd 3	ccd 6	ccd 7		ccd 0	ccd 1	ccd 2	ccd 3	ccd 6	ccd 7
level 1 events	231338	234624	259544	257370	262608	280339	grade 0 events	10221	13777	10820	11471	8503	10857
rejected events	204960	202789	232799	230551	237481	156881		4%	5%	4%	4%	3%	3%
rejected %	88%	86%	89%	89%	90%	55%	grade 1 events	120	128	179	166	123	253
								0%	0%	0%	0%	0%	0%
							grade 2 events	6348	6595	6167	5559	5918	25547
								2%	2%	2%	2%	2%	9%
							grade 3 events	2933	3219	2837	2829	2873	12036
								1%	1%	1%	1%	1%	4%
							grade 4 events	2712	3155	2870	2870	2967	11987
								1%	1%	1%	1%	1%	4%
							grade 5 events	8864	9463	8488	10335	10412	30405
								3%	4%	3%	4%	3%	10%
							grade 6 events	4812	5742	4668	4706	5550	66266
								2%	2%	1%	1%	2%	23%
							grade 7 events	195328	192545	223515	219434	226262	122988
								84%	82%	86%	85%	86%	43%

## 2.2 Compared Parameters

Parameter	Planned	Actual	Parameter	Planned	Actual
Instrument	ACIS	ACIS	Obspar format version number	7	7
Detector	ACIS-012367	ACIS-012367	Obspar file type	PREDICTED	ACTUAL
Grating	NONE	NONE	Obspar update status	NONE	UPDATED
Data mode	VFAINT	VFAINT	Number of optional ACIS chips dropped	0	0
Observation mode	POINTING	POINTING	On-chip summing requested	N	N
[deg] Pointing RA	67.536950	67.55874780163143	Subarray requested	NONE	NONE
[deg] Pointing Dec	35.289109	35.26829377110095	Alternating exposures requested	N	N
[deg] Pointing Roll	280.137860	280.3339563415155	[s] Primary exposure time	0.000000	3.2
[mm] SIM focus pos	-0.782348	-0.7809083437167272			
[mm] SIM defocus	0	0.001439871863259334			
[mm] SIM translation stage pos	-233.592463	-233.5874344608287			
[mm] SIM translation stage offset	0	-0.005018542100998502			
[s] Observation start time (MET)	226516628.184000	226515048.36463			
Observation start date	2005-03-06T17:16:04	2005-03-06T16:50:48			
[s] Observation end time (MET)	226556628.184000	226558048.65408			
Observation end date	2005-03-07T04:22:44	2005-03-07T04:47:28			
Read mode	TIMED	TIMED			

## 2.3 Aspect

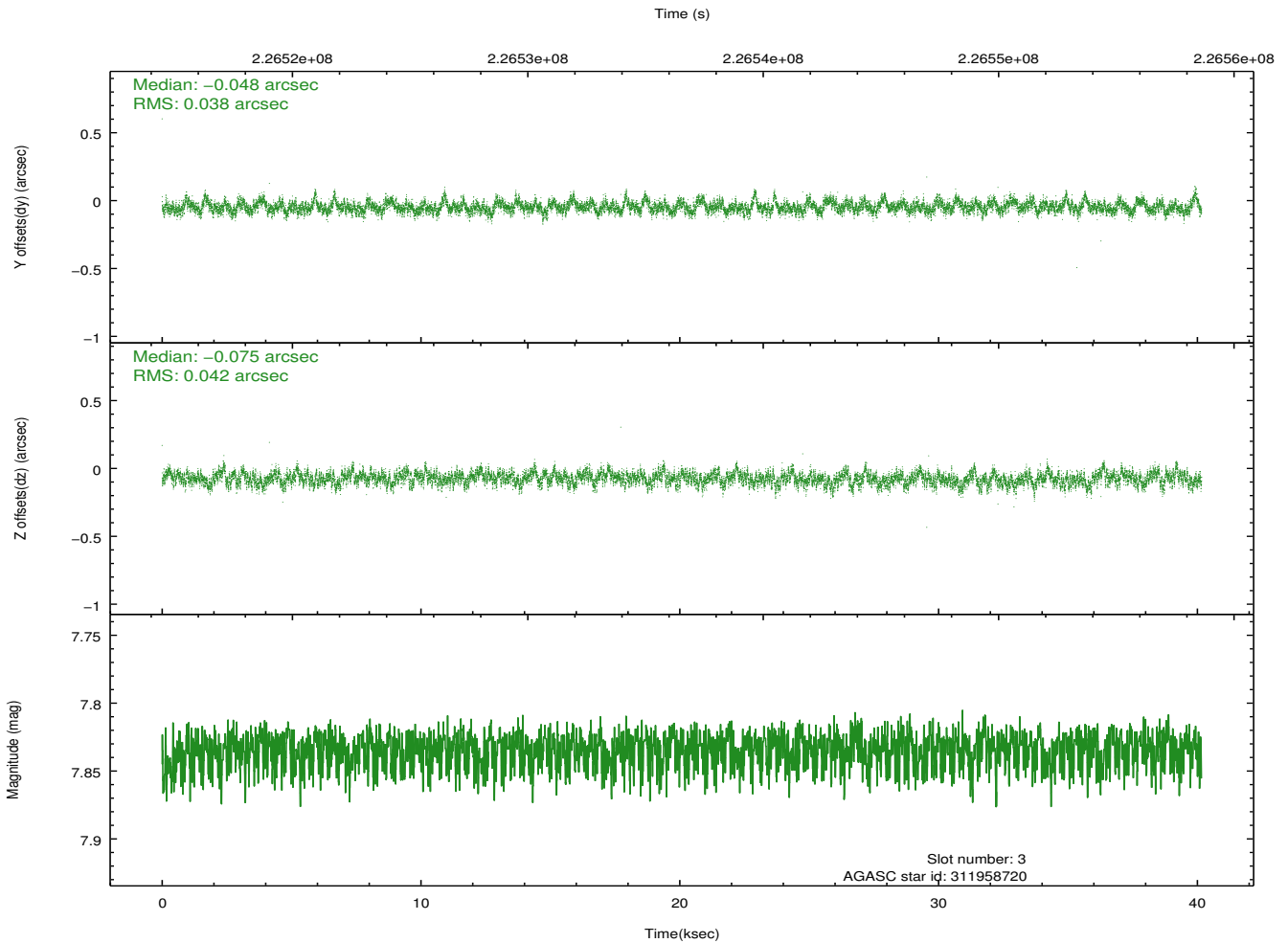
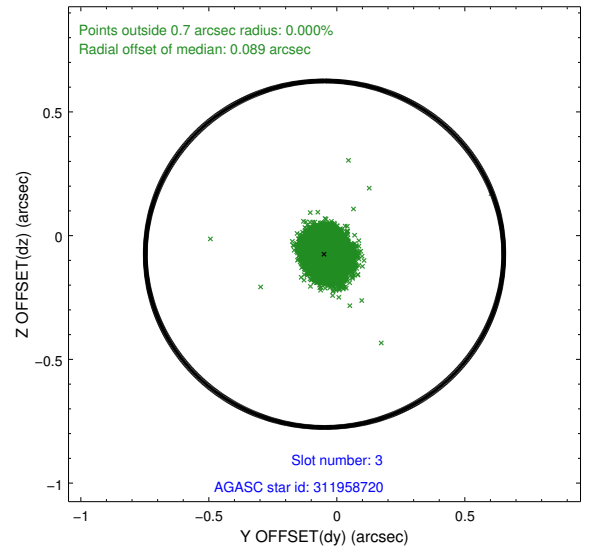
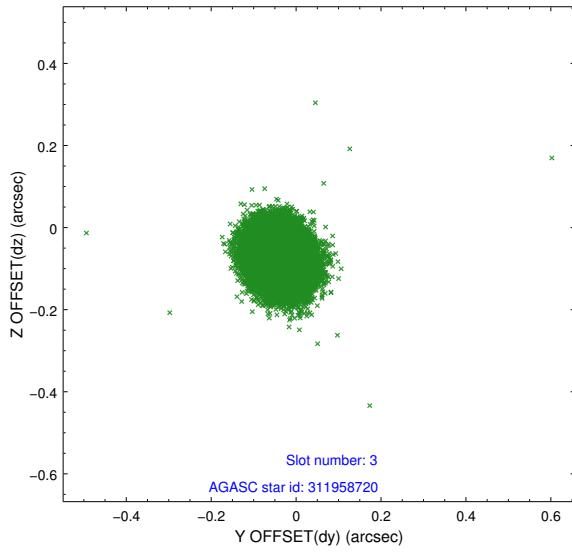


### Slot Statistics

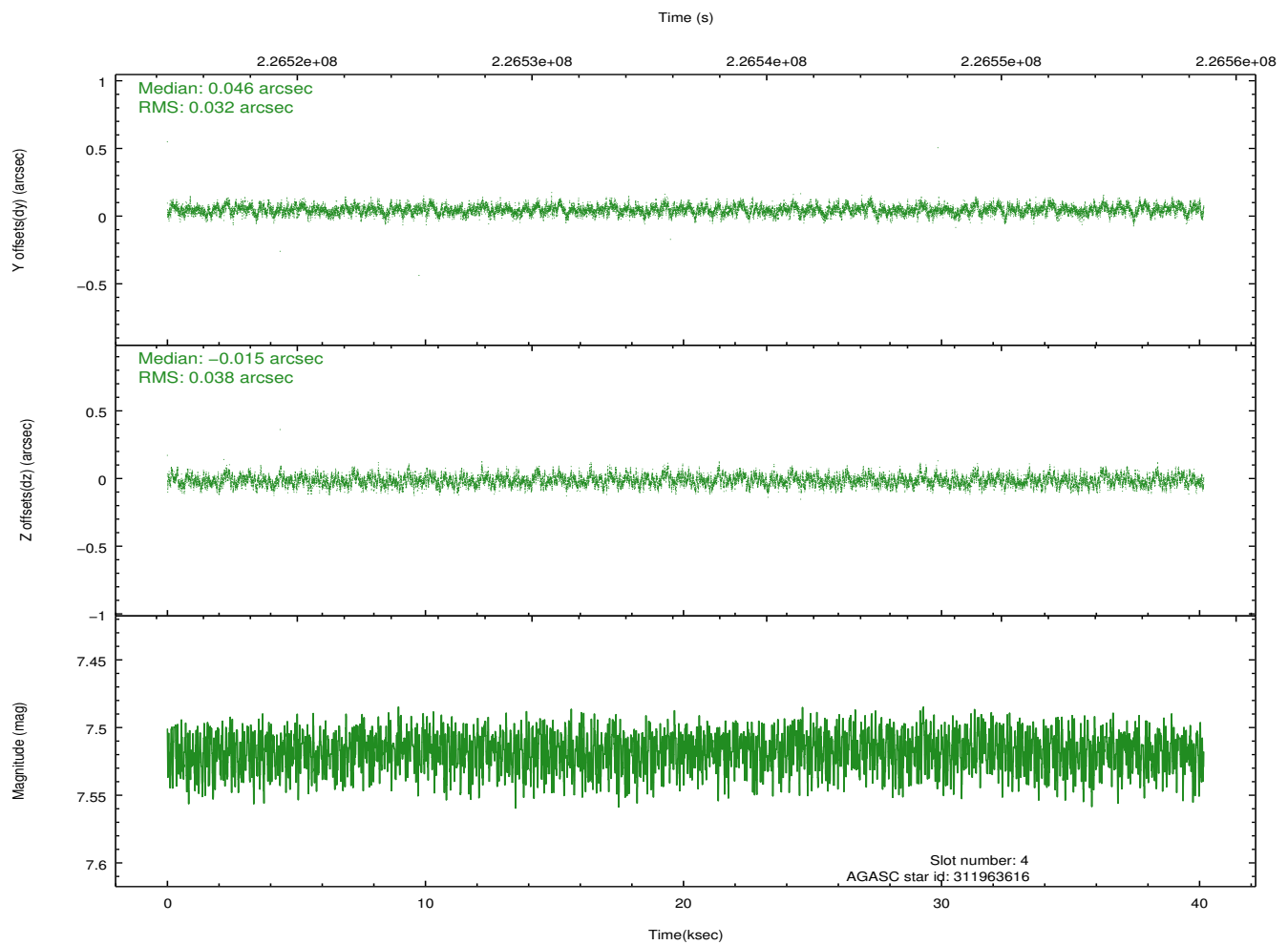
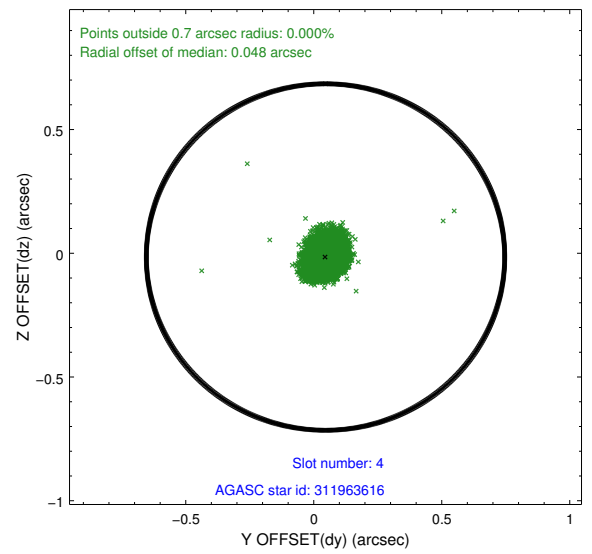
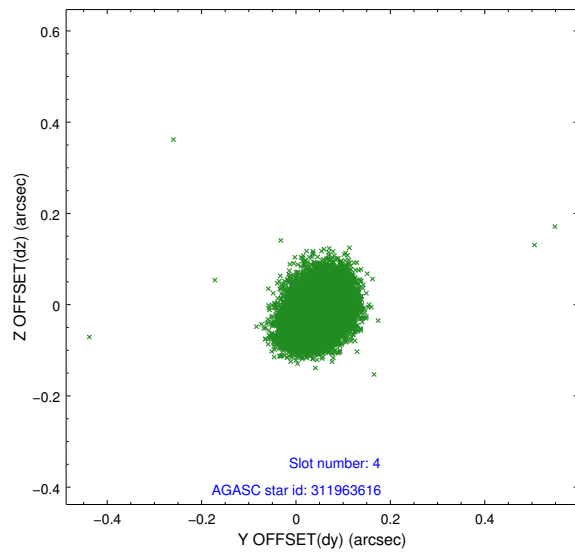
slot	status	id	mag	n_pts	med_dy	med_dz	dr1	dr2	ra	dec	mean_y	mean_z
0	FID	ACIS-I-1	7.24	9797	-0.004	0.034	0.011	0.020	0.000000	0.000000	934.71	-832.58
1	FID	ACIS-I-4	7.17	9797	0.096	0.002	0.021	0.034	0.000000	0.000000	2154.87	1067.18
2	FID	ACIS-I-5	7.22	9797	-0.193	0.035	0.019	0.040	0.000000	0.000000	-1813.45	1065.09
3	GUIDE	311958720	7.83	19593	-0.048	-0.075	0.059	0.098	67.019976	35.020500	680.38	-1669.61
4	GUIDE	311963616	7.52	19594	0.046	-0.015	0.052	0.087	67.301368	35.265783	-39.37	-696.14
5	GUIDE	312084320	9.61	19575	0.155	-0.085	0.126	0.202	67.603566	35.117886	641.87	84.82
6	GUIDE	312086016	9.60	19583	-0.108	0.067	0.104	0.170	68.214693	35.296559	317.36	1966.57
7	GUIDE	312086640	8.67	19587	-0.043	0.110	0.067	0.109	67.746042	35.599832	-994.44	800.44

## 2.4 Star Slots

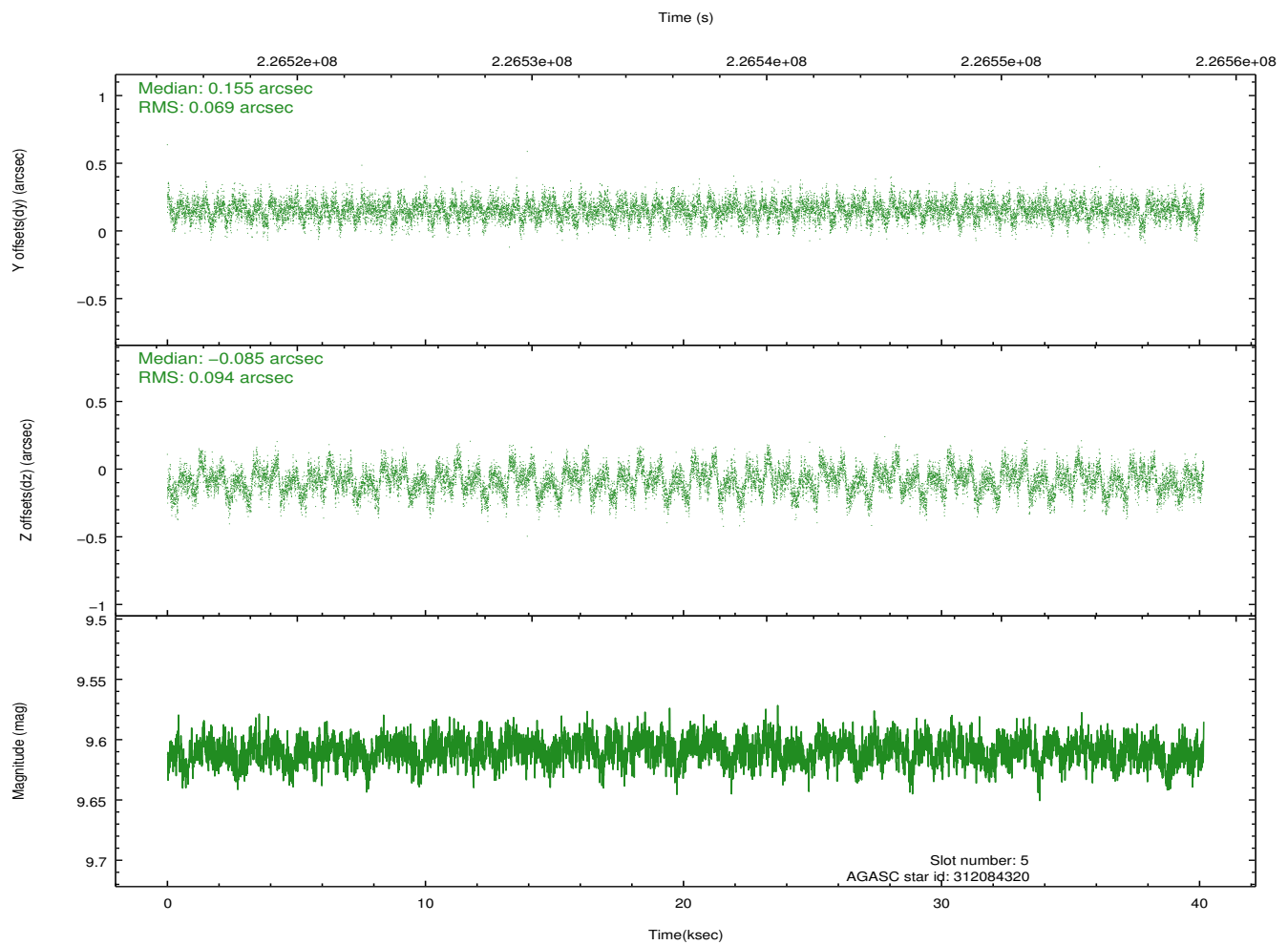
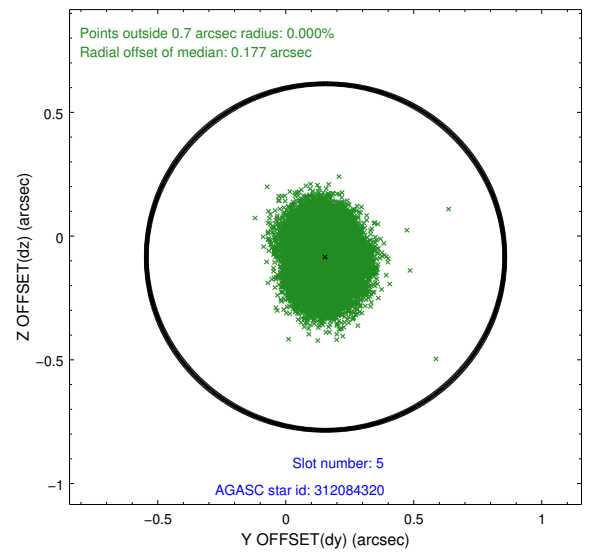
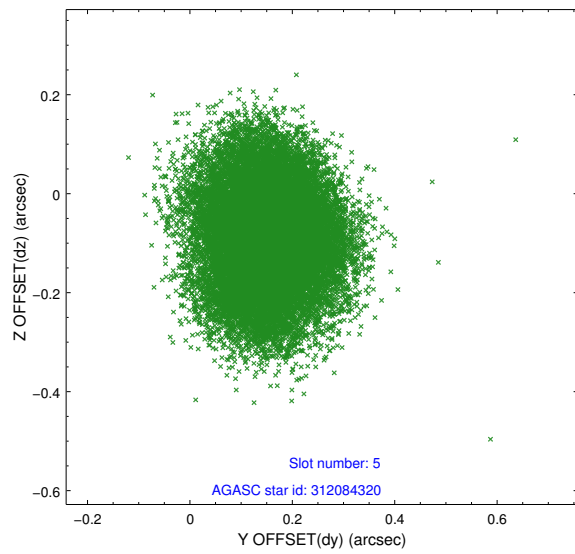
### 2.4.1 Slot 3



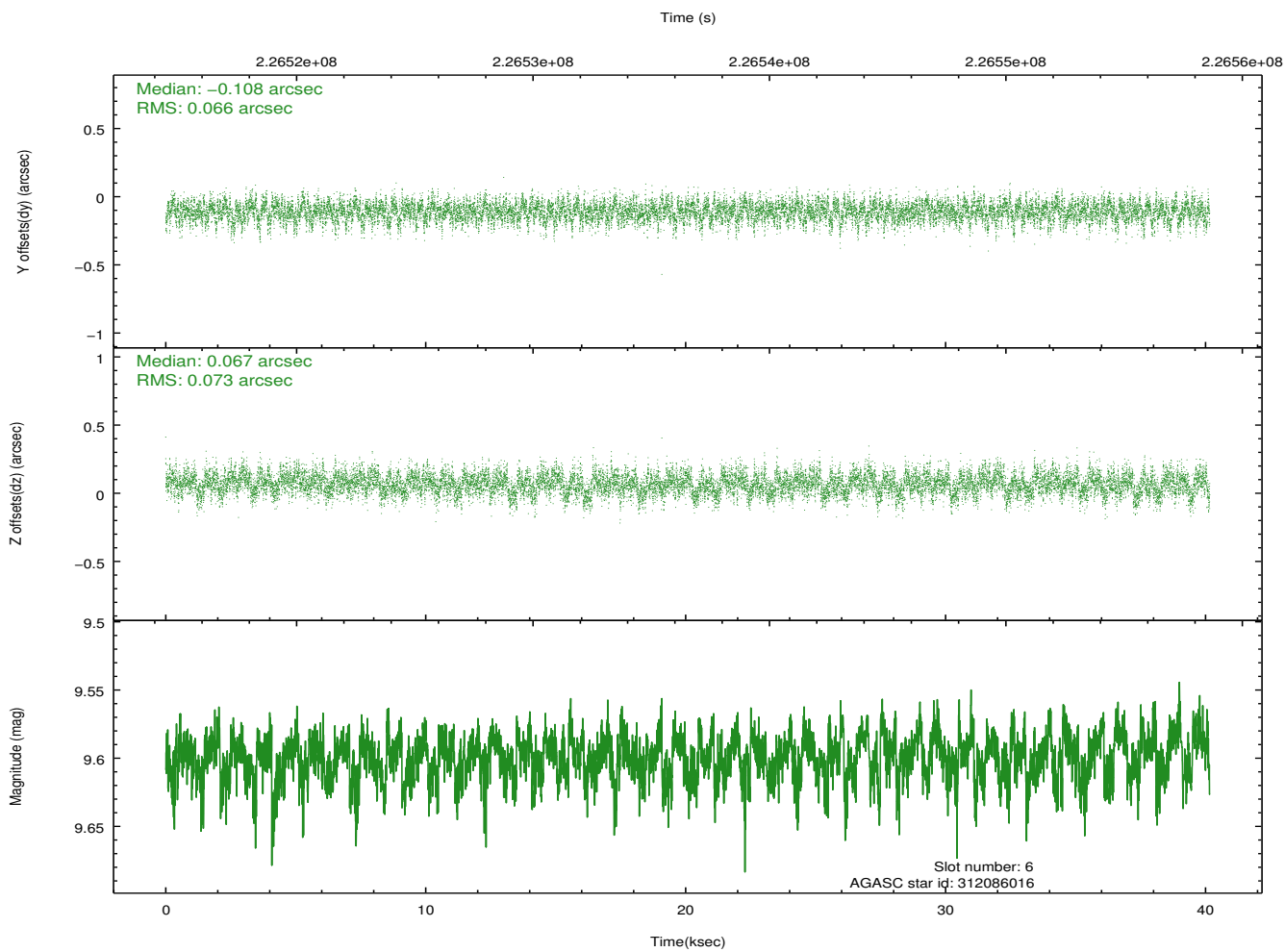
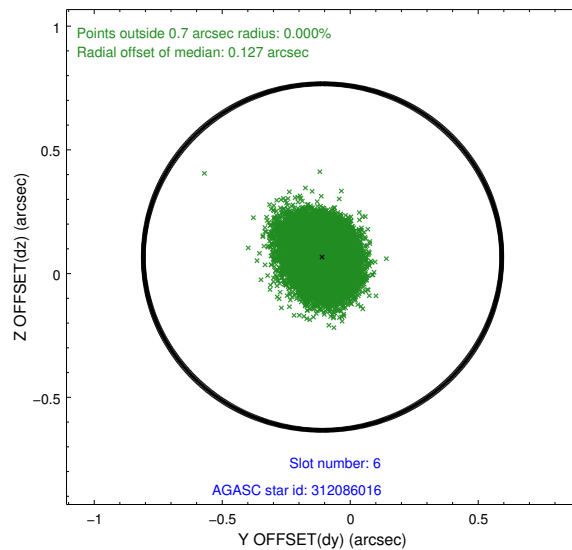
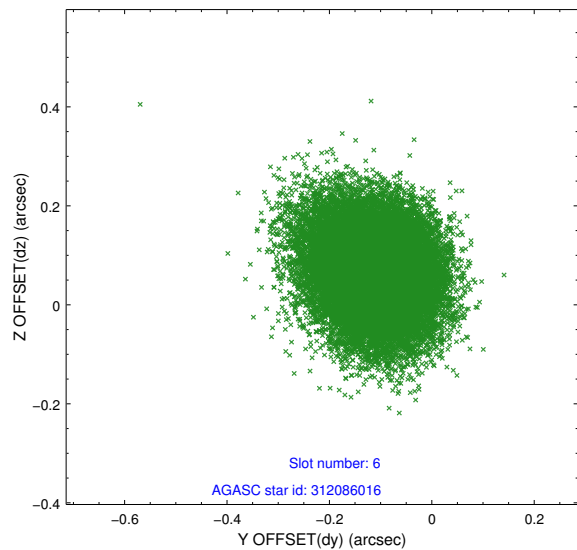
## 2.4.2 Slot 4



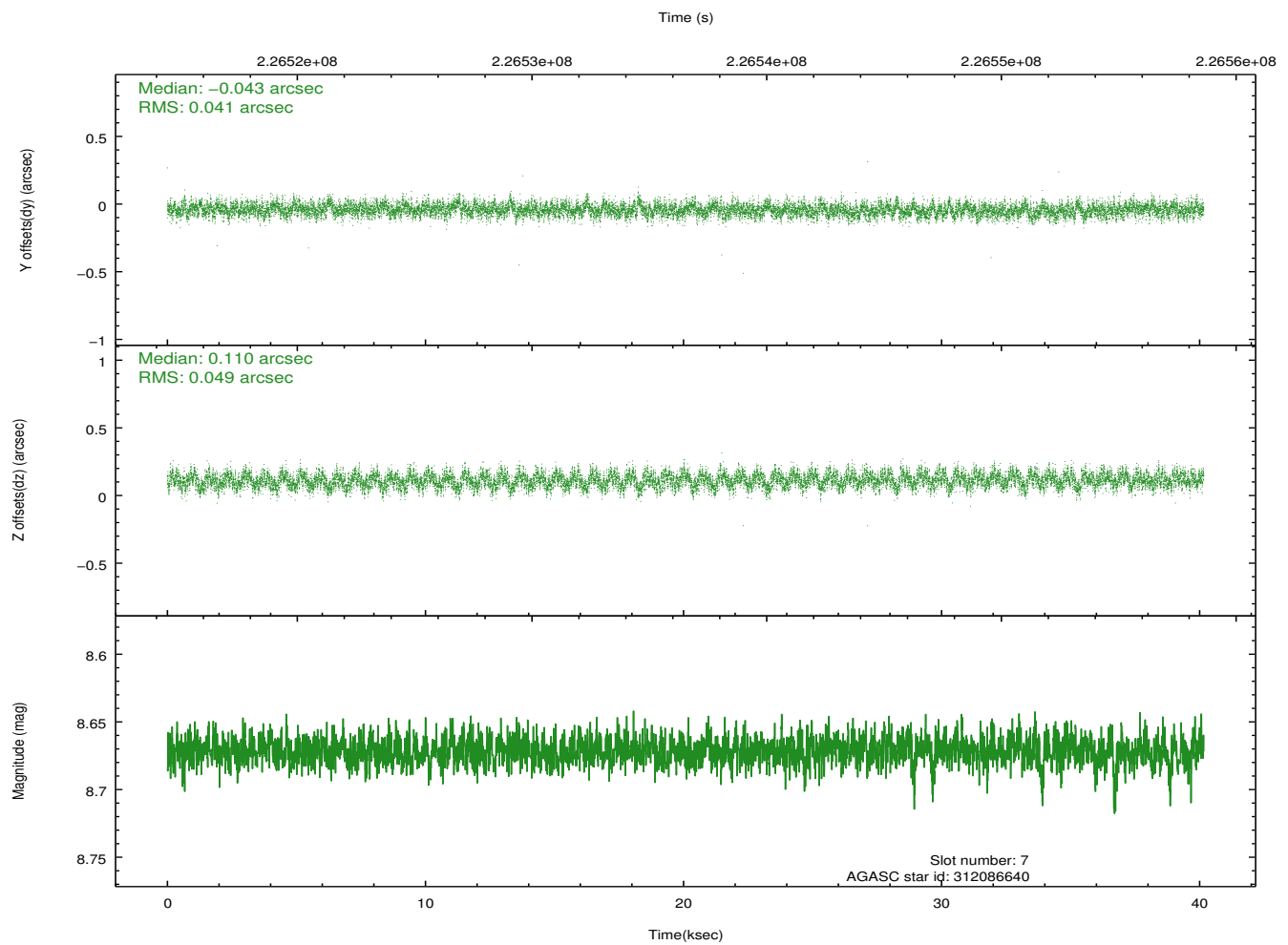
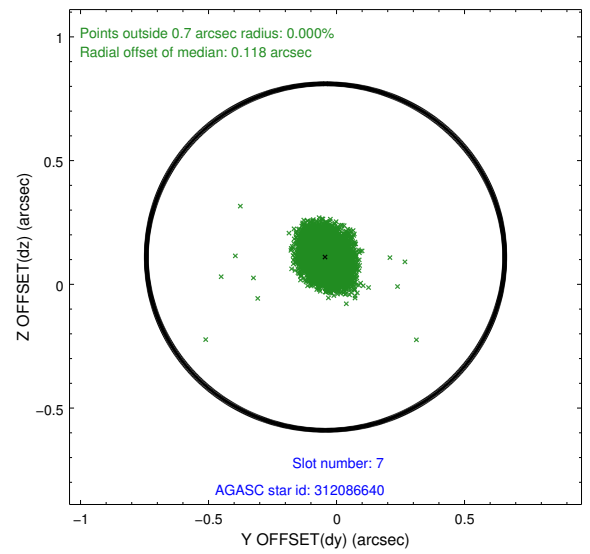
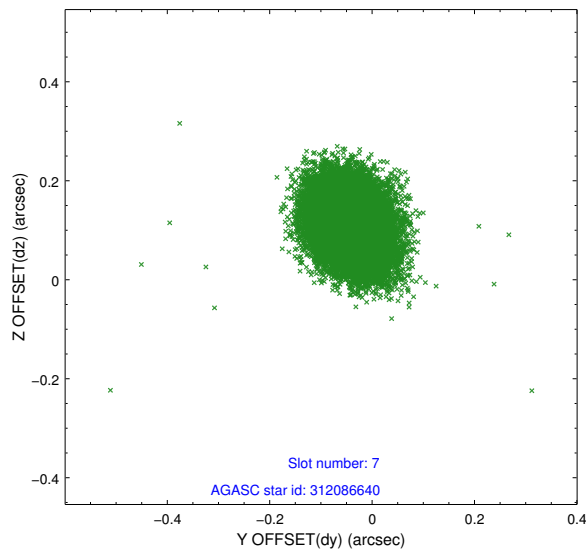
### 2.4.3 Slot 5



## 2.4.4 Slot 6

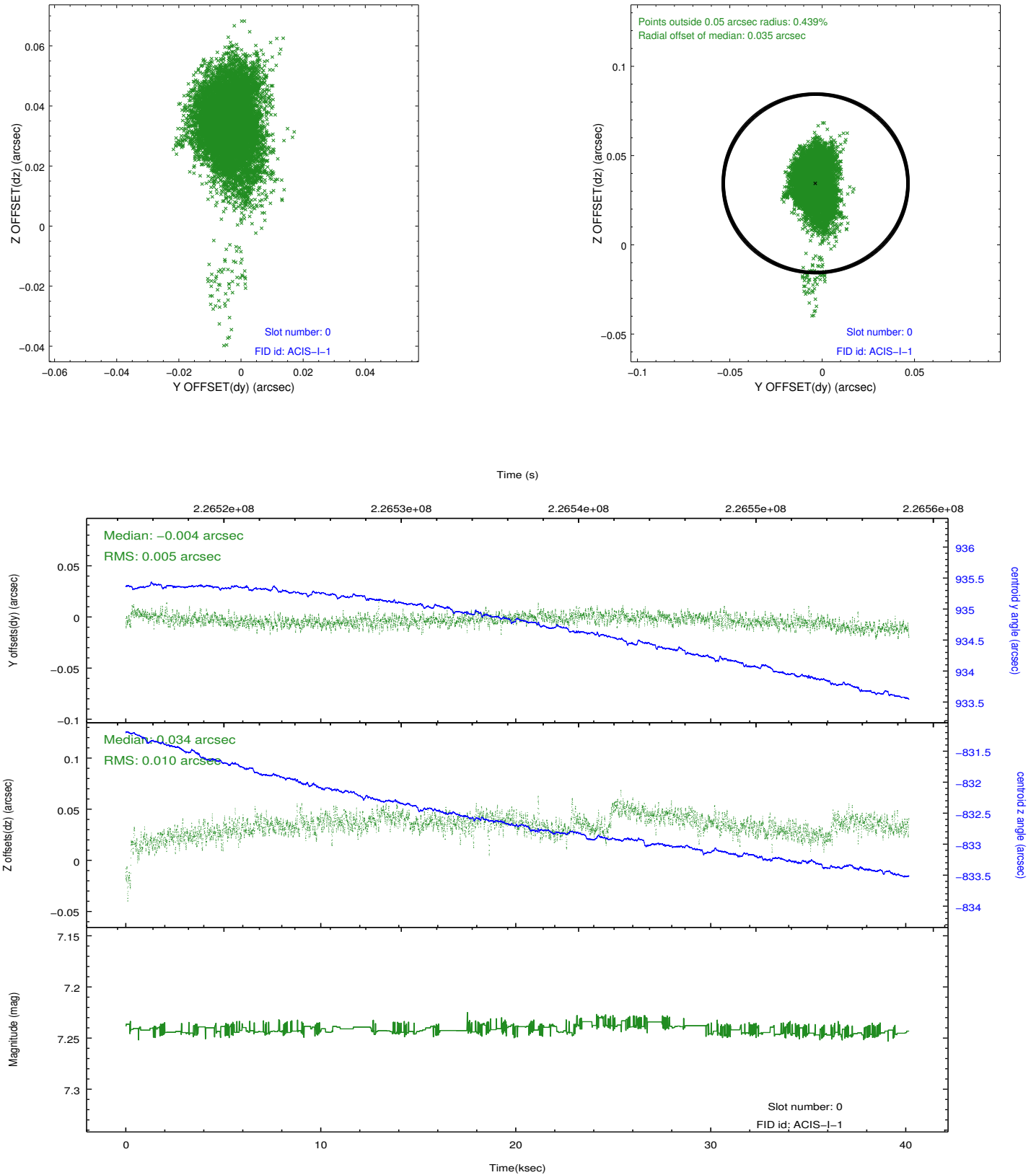


## 2.4.5 Slot 7

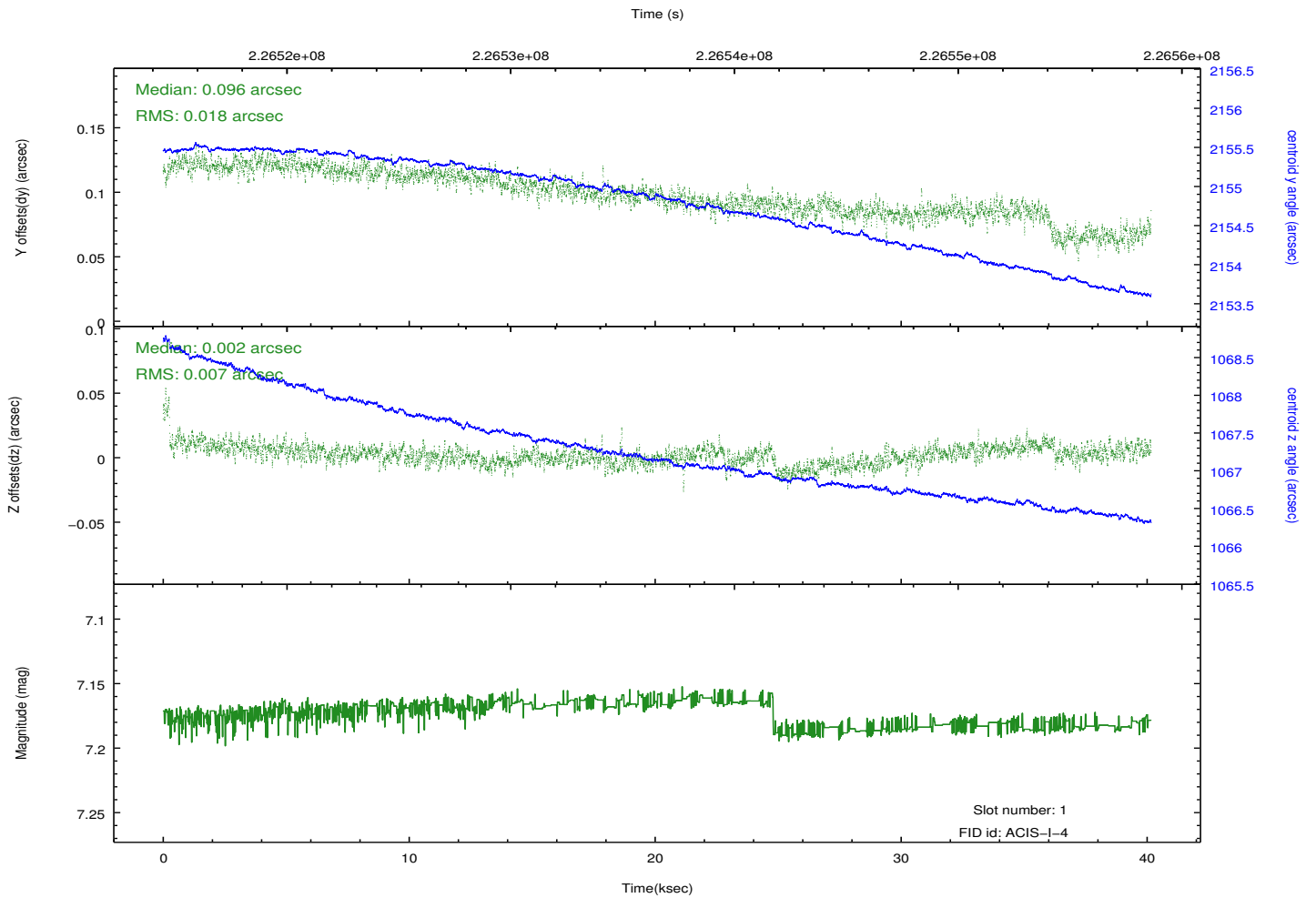
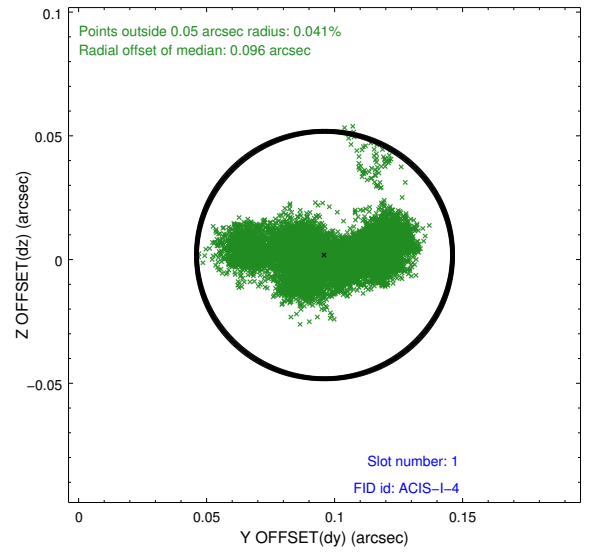
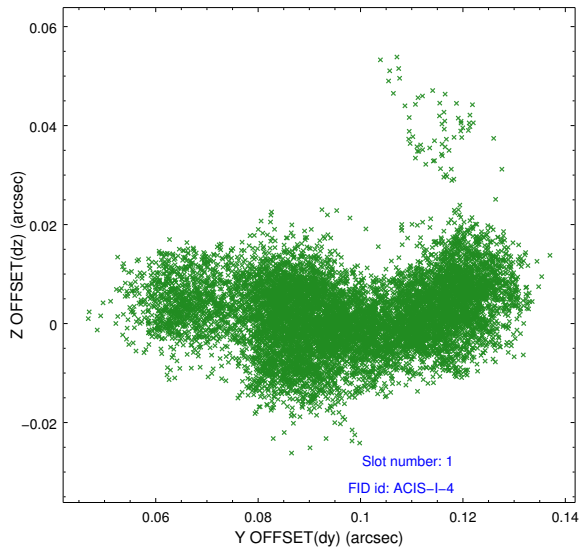


## 2.5 FID Slots

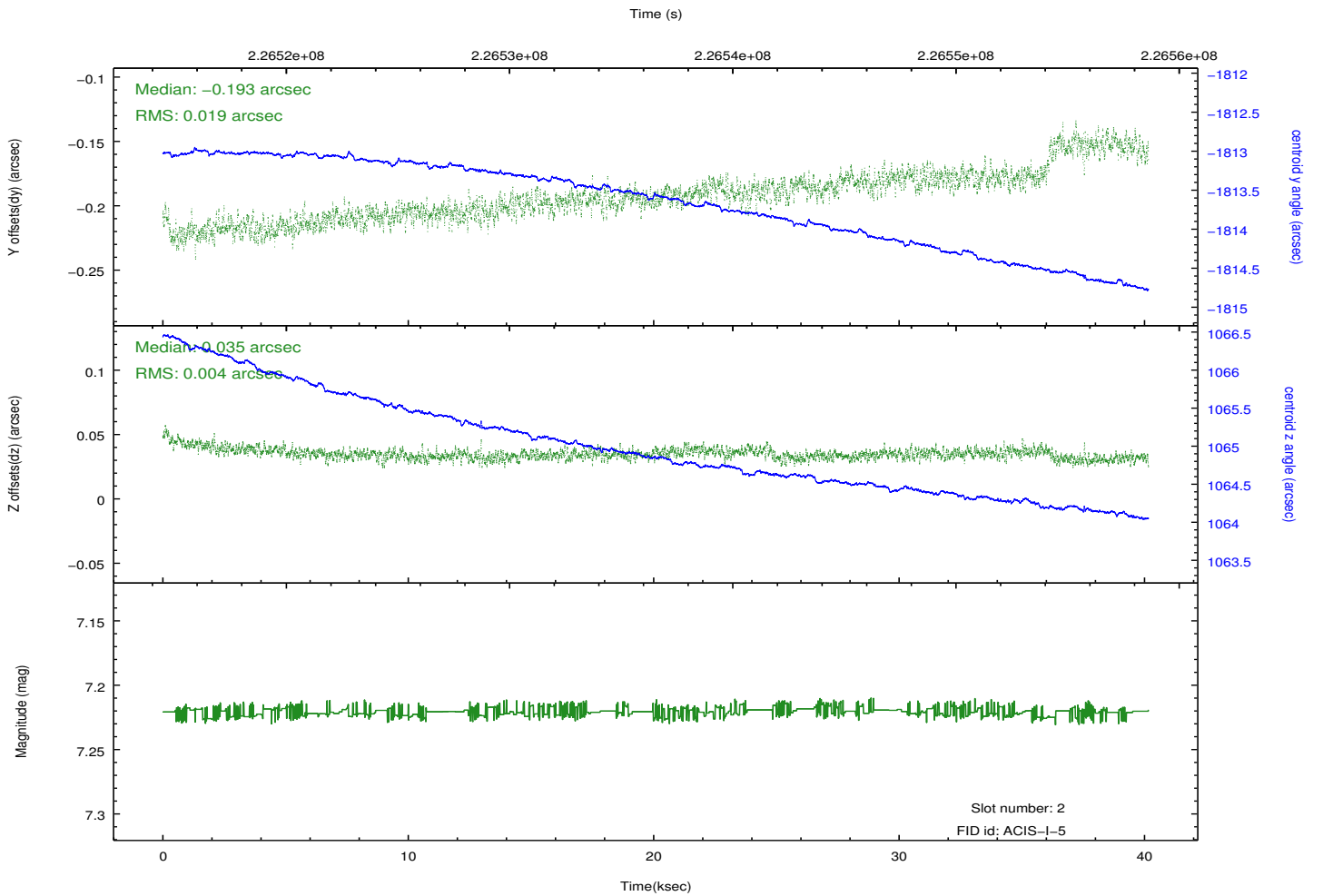
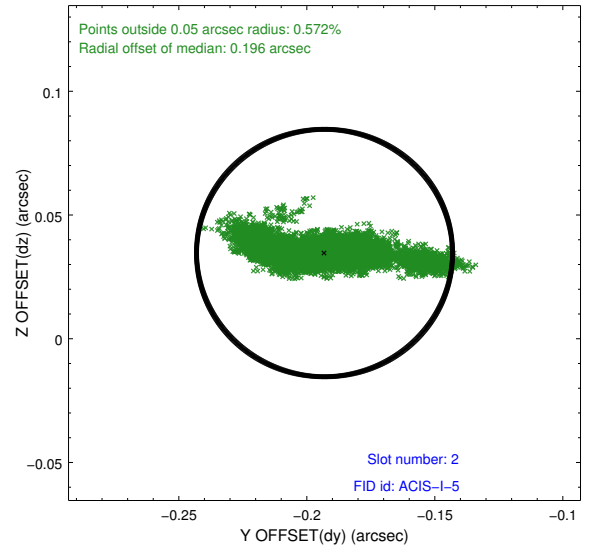
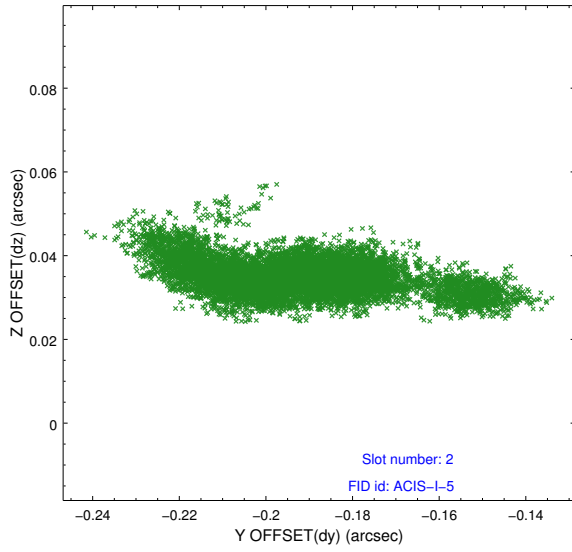
### 2.5.1 Slot 0



## 2.5.2 Slot 1



### 2.5.3 Slot 2



# A Summary

## A.1 Status

V&V Scientist	Jen Lauer
V&V Date (YYYY-MM-DD)	2013.01.11
V&V Edition	1
V&V Disposition and Status	OK
V&V Charge Time	40.15999

## A.2 Comments

Joint Proposal: NRAO