

V&V Reference Report

L2 ASCDS Version : 8.4.3

Observation 5489 - L2 Version 2
Chandra X-Ray Center

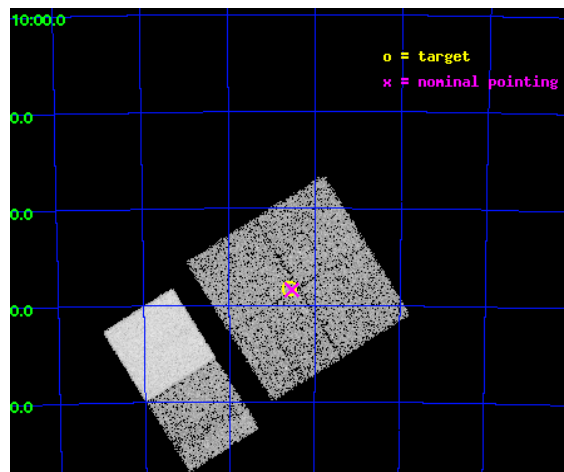
L2 Processing Date : Mar 25 2012

Contents

1	Front	2
2	OBI	3
2.1	OBI	3
2.1.1	Images	3
2.1.2	Bias	3
2.1.3	Parameters	4
2.1.4	Events	4
2.2	Compared Parameters	5
2.3	Aspect	6
2.4	Star Slots	9
2.4.1	Slot 3	9
2.4.2	Slot 4	10
2.4.3	Slot 5	11
2.4.4	Slot 6	12
2.4.5	Slot 7	13
2.5	FID Slots	14
2.5.1	Slot 0	14
2.5.2	Slot 1	15
2.5.3	Slot 2	16
A	Summary	17
A.1	Status	17
A.2	Comments	17

1 Front

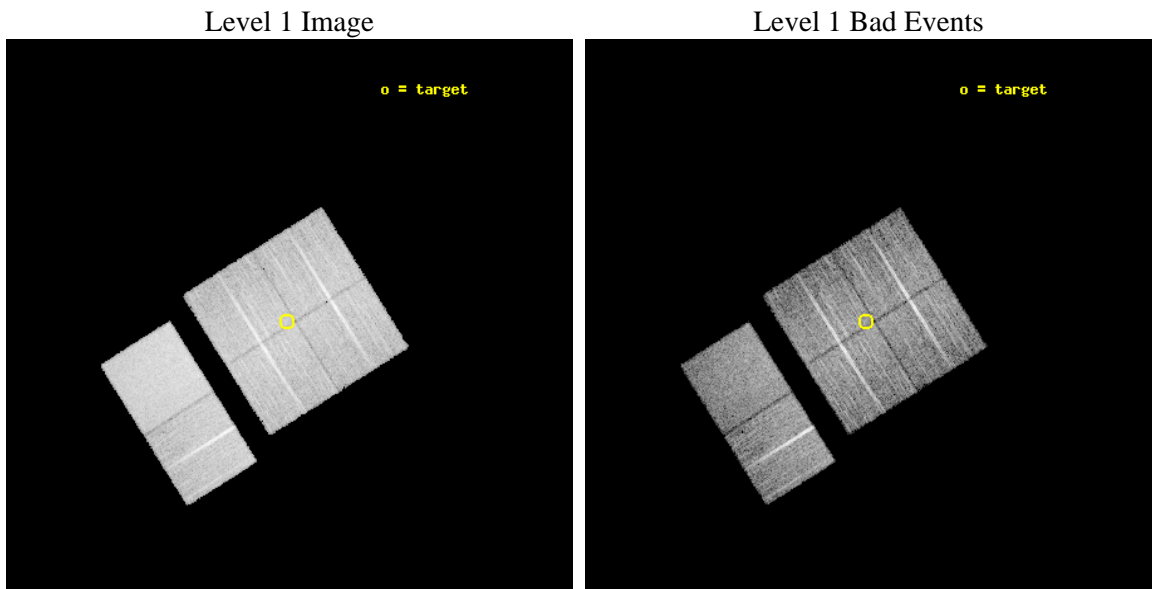
seq_num	400419	Sequence number
obs_id	5489	Observation id
title	Discovering X-ray pulsars in the Wing of the Small Magellanic Cloud	
observer	Prof Malcolm Coe	Principal investigator
object	SMCwing 10	Source name
dtycycle	0	
cycle	P	events from which exps? Prim/Second/Both
ra_targ	19.145833	Observer's specified target RA [deg]
dec_targ	-72.637778	Observer's specified target Dec [deg]
ra_nom	19.132964627366	Nominal RA [deg]
dec_nom	-72.640402216746	Nominal Dec [deg]
roll_nom	237.84484475618	Nominal Roll [deg]
revision	2	Processing version of data
ontime	9753.599963665	Sum of GTIs [s]
livetime	9630.0940080123	Livetime [s]
ontime0	9753.544313699	Sum of GTIs [s]
ontime1	9753.5853536725	Sum of GTIs [s]
ontime2	9753.599963665	Sum of GTIs [s]
ontime3	9753.599963665	Sum of GTIs [s]
ontime6	9753.599963665	Sum of GTIs [s]
ontime7	9753.599963665	Sum of GTIs [s]
l2events	87798	Number of level 2 events



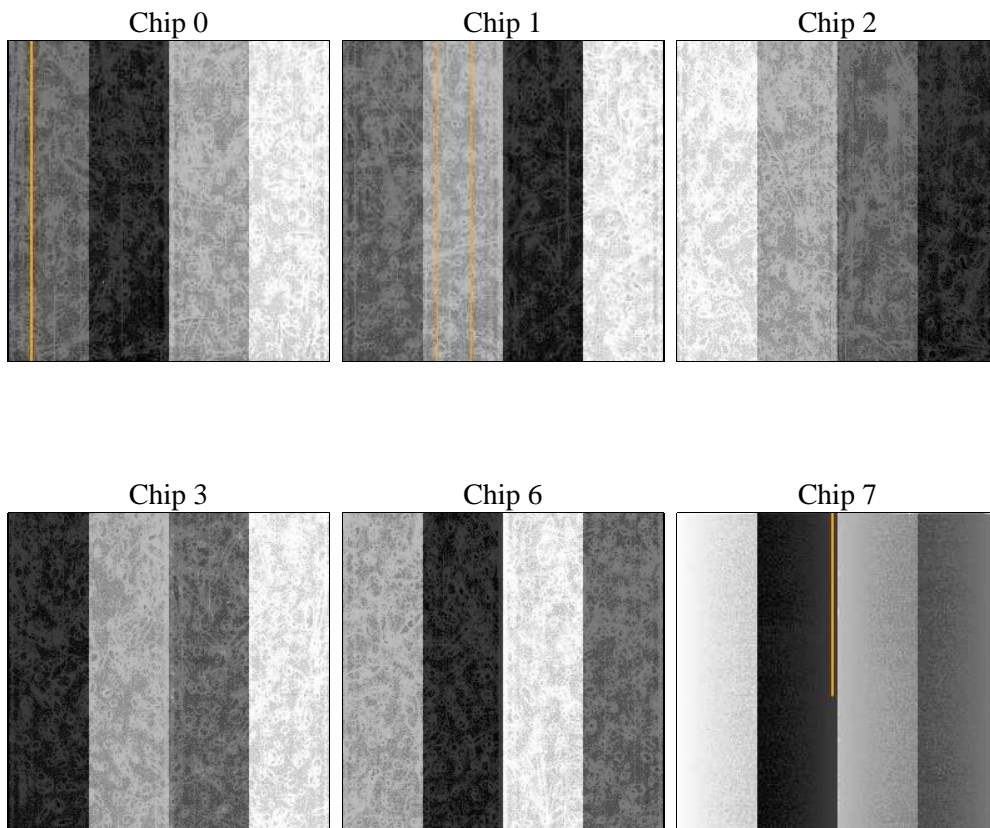
2 OBI

2.1 OBI

2.1.1 Images



2.1.2 Bias



2.1.3 Parameters

obi_num	0	Obi number	sched_exp_time	10000.000000	[s] Scheduled observation exposure time
ascdsver	8.4.3	Processing system revision	ontime	9753.599963665	Sum of GTIs [s]
caldbver	4.4.8	 	ontime0	9753.544313699	Sum of GTIs [s]
date	2012-03-25T15:52:27	Date and time of file creation	ontime1	9753.5853536725	Sum of GTIs [s]
revision	2	Processing version of data	ontime2	9753.599963665	Sum of GTIs [s]
			ontime3	9753.599963665	Sum of GTIs [s]
			ontime6	9753.599963665	Sum of GTIs [s]
			ontime7	9753.599963665	Sum of GTIs [s]
			l1events	511921	Number of level 1 events

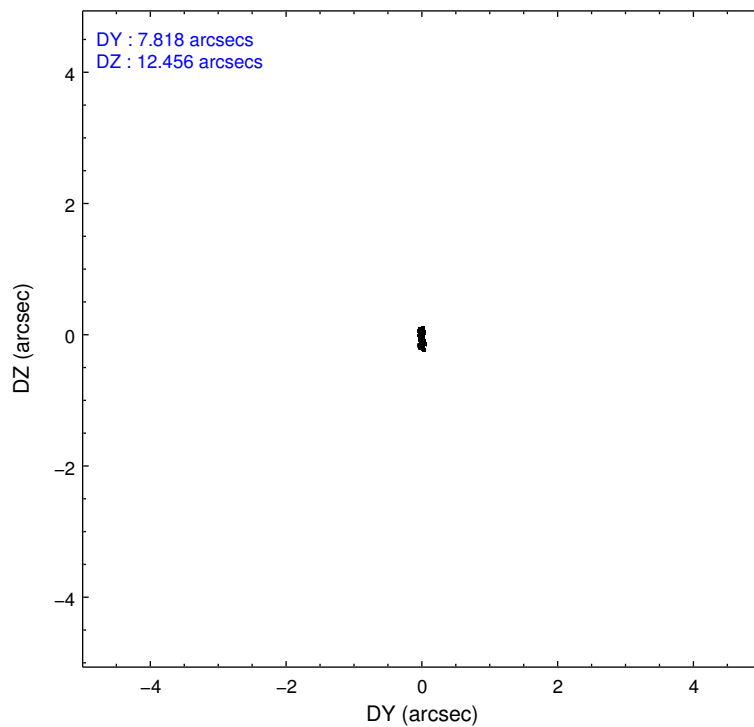
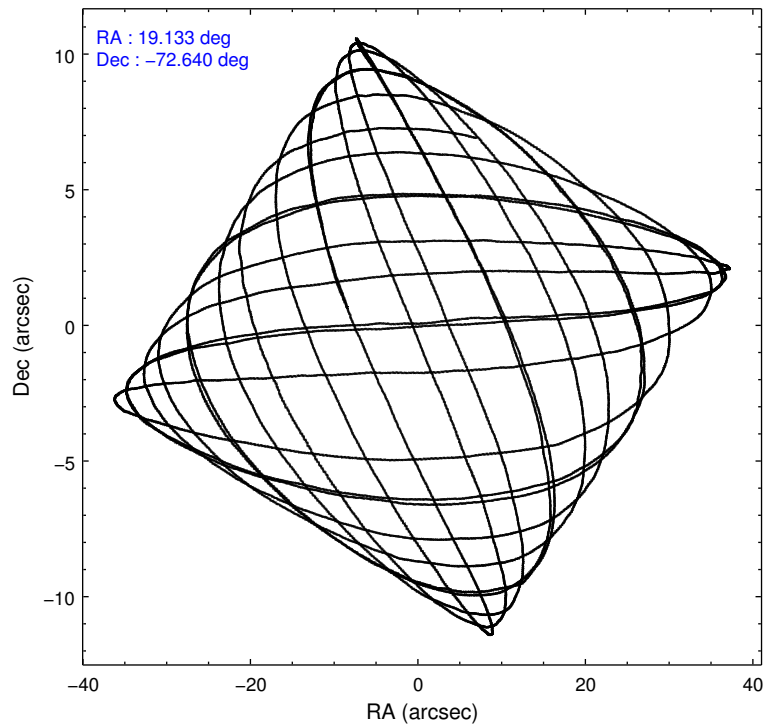
2.1.4 Events

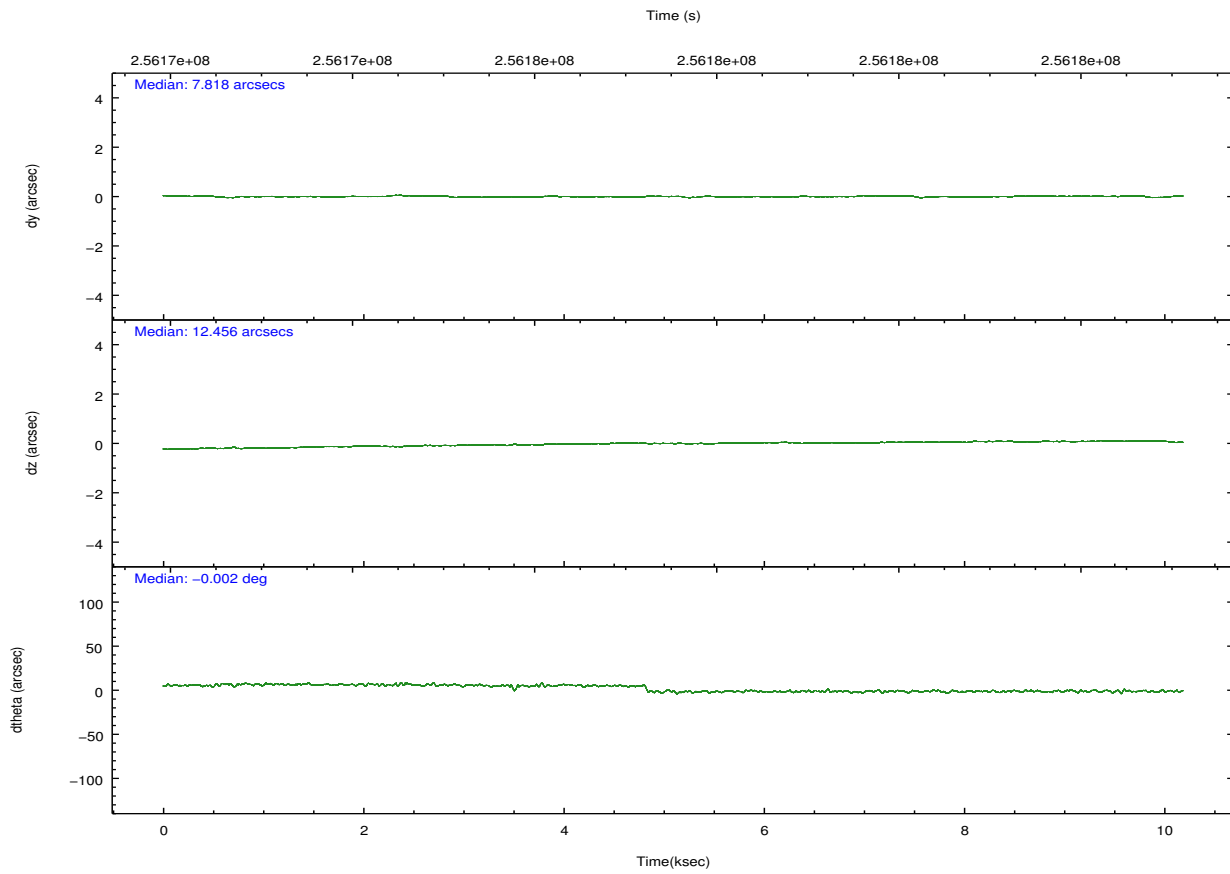
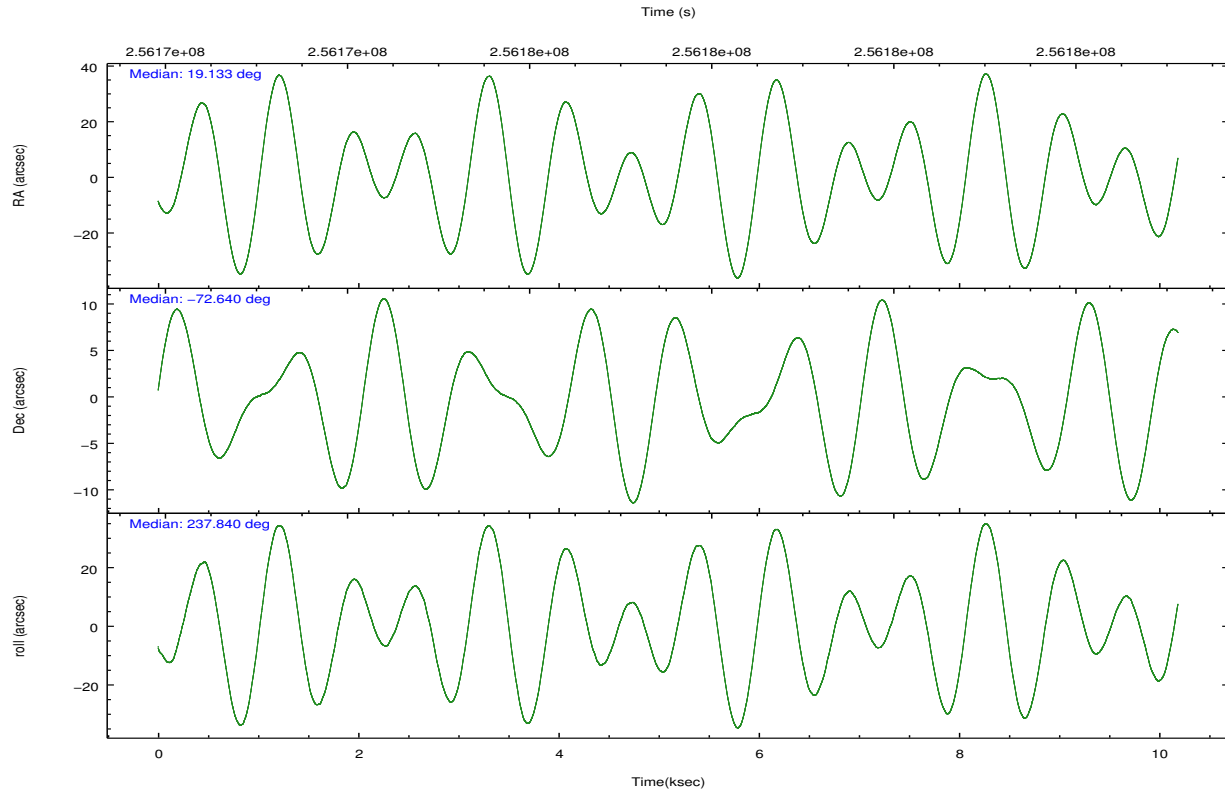
	ccd 0	ccd 1	ccd 2	ccd 3	ccd 6	ccd 7		ccd 0	ccd 1	ccd 2	ccd 3	ccd 6	ccd 7
level 1 events	77413	78307	81890	77435	84591	112285	grade 0 events	4132	3957	4364	4029	3803	4103
rejected events	67579	67955	72188	68276	74562	65498		5%	5%	5%	5%	4%	3%
rejected %	87%	86%	88%	88%	88%	58%	grade 1 events	54	36	58	53	47	106
								0%	0%	0%	0%	0%	0%
							grade 2 events	2133	2298	1976	1701	2167	9384
								2%	2%	2%	2%	2%	8%
							grade 3 events	951	1058	932	918	973	4125
								1%	1%	1%	1%	1%	3%
							grade 4 events	906	1007	889	930	980	4028
								1%	1%	1%	1%	1%	3%
							grade 5 events	3234	3637	3035	3717	3917	10764
								4%	4%	3%	4%	4%	9%
							grade 6 events	1717	2034	1550	1589	2114	25179
								2%	2%	1%	2%	2%	22%
							grade 7 events	64286	64280	69086	64498	70590	54596
								83%	82%	84%	83%	83%	48%

2.2 Compared Parameters

Parameter	Planned	Actual	Parameter	Planned	Actual
Instrument	ACIS	ACIS	Obspar format version number	7	7
Detector	ACIS-012367	ACIS-012367	Obspar file type	PREDICTED	ACTUAL
Grating	NONE	NONE	Obspar update status	NONE	UPDATED
Data mode	FAINT	FAINT	Number of optional ACIS chips dropped	0	0
Observation mode	POINTING	POINTING	On-chip summing requested	N	N
[deg] Pointing RA	19.136183	19.13296462736647	Subarray requested	NONE	NONE
[deg] Pointing Dec	-72.613054	-72.64040221674593	Alternating exposures requested	N	N
[deg] Pointing Roll	237.639235	237.8448447561756	[s] Primary exposure time	0.000000	3.2
[mm] SIM focus pos	-0.782348	-0.7809083437167272			
[mm] SIM defocus	0	0.001439871863259334			
[mm] SIM translation stage pos	-233.592463	-233.5874344608287			
[mm] SIM translation stage offset	0	-0.005018542100998502			
[s] Observation start time (MET)	256172613.184000	256172237.77555			
Observation start date	2006-02-12T23:02:28	2006-02-12T22:57:17			
[s] Observation end time (MET)	256182613.184000	256183455.37607			
Observation end date	2006-02-13T01:49:08	2006-02-13T02:04:15			
Read mode	TIMED	TIMED			

2.3 Aspect



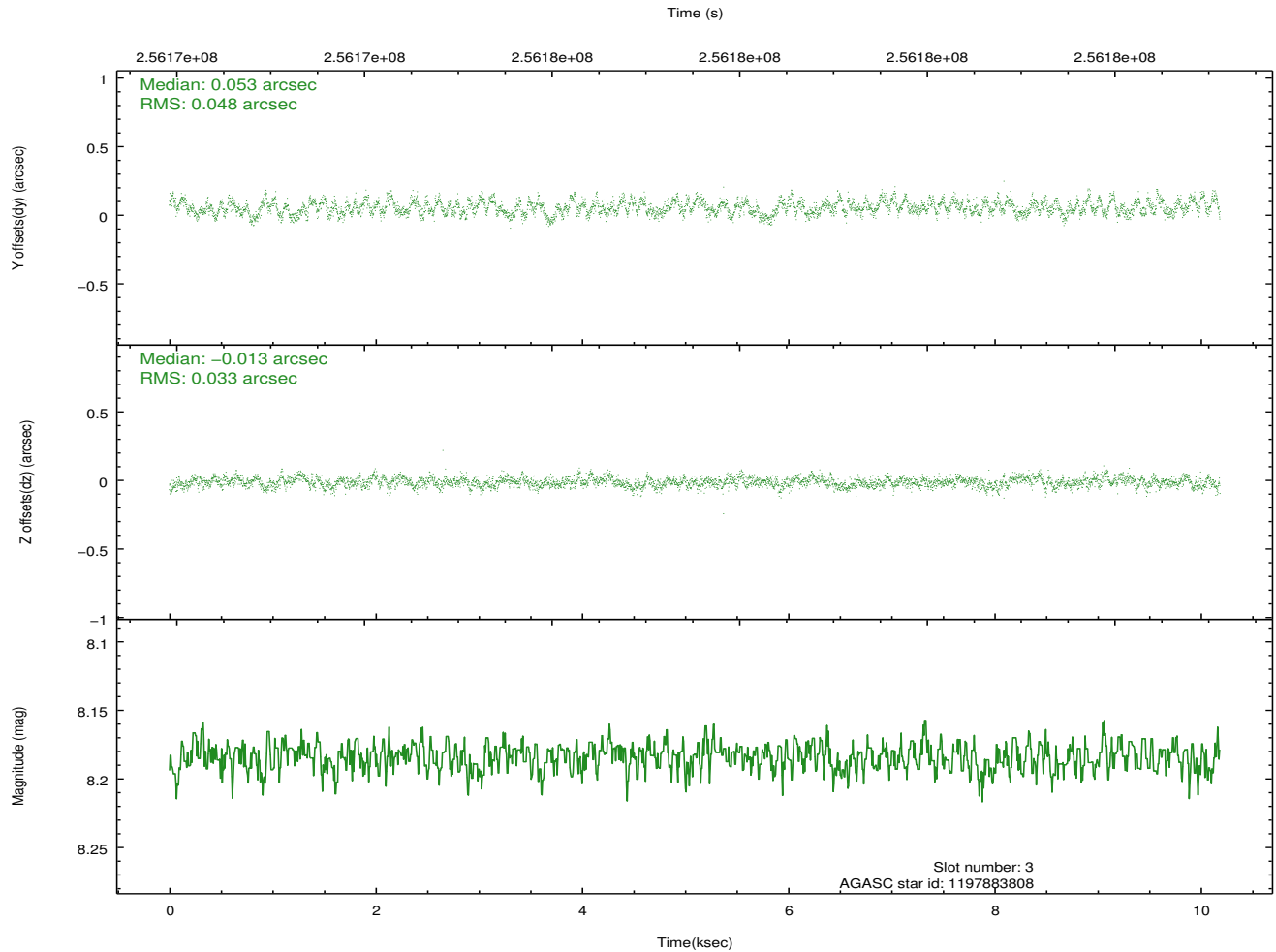
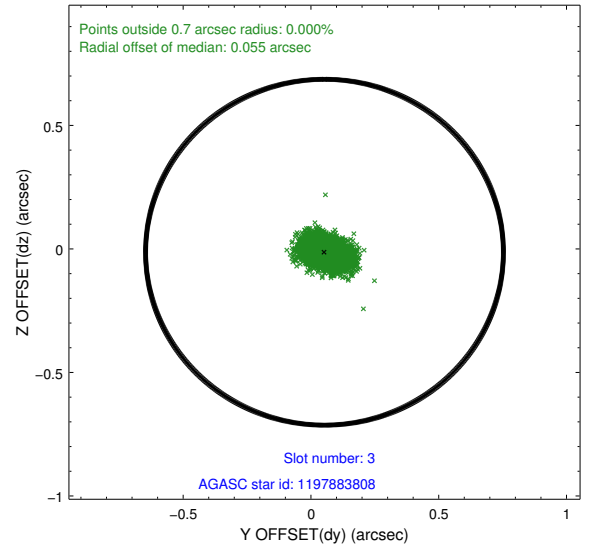
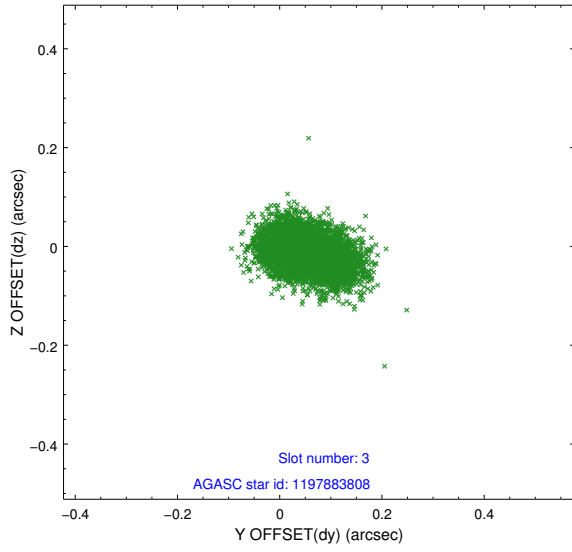


Slot Statistics

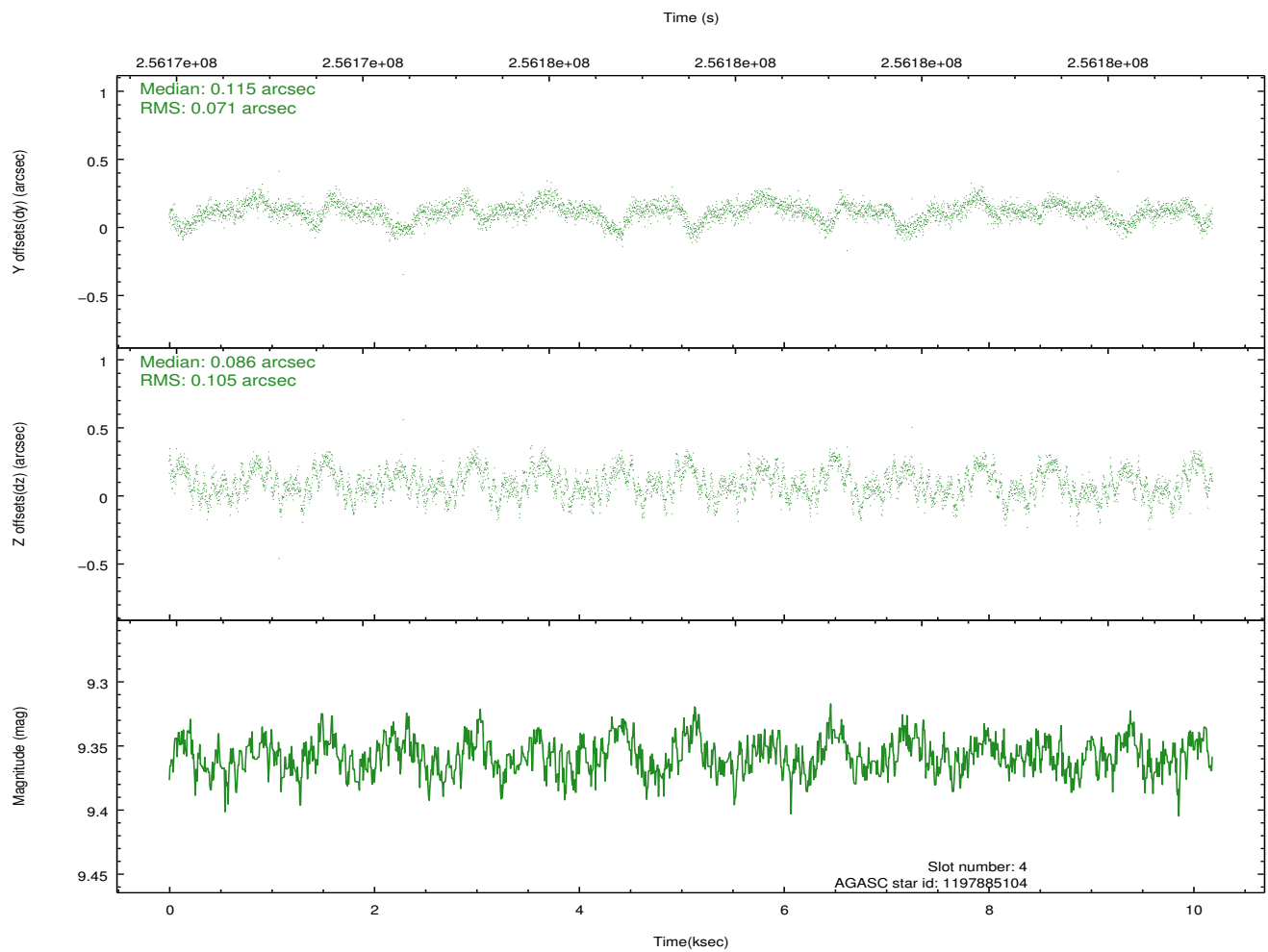
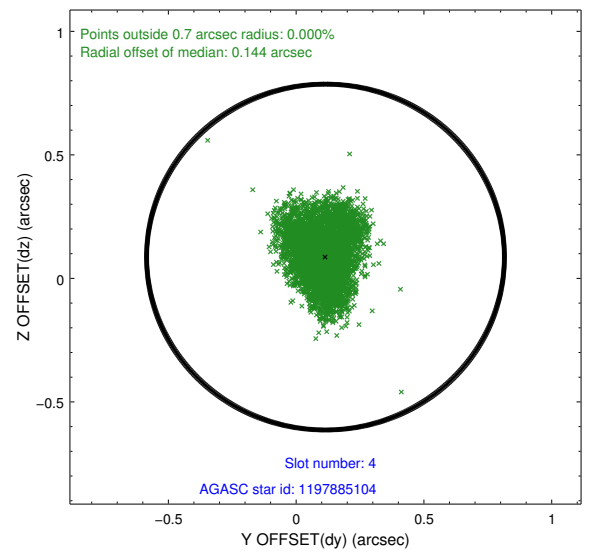
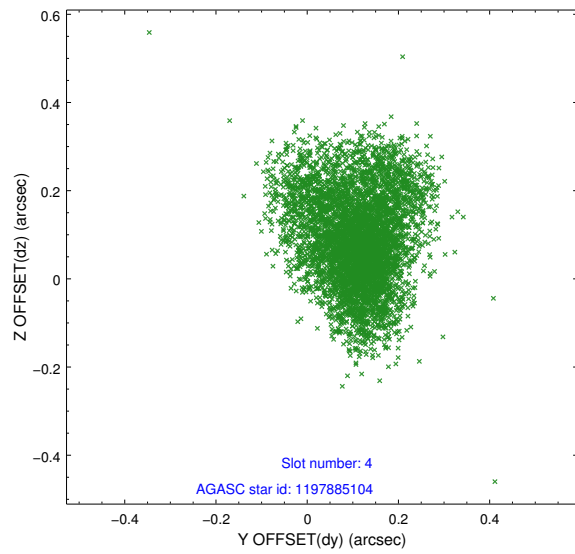
slot	status	id	mag	n_pts	med_dy	med_dz	dr1	dr2	ra	dec	mean_y	mean_z
0	FID	ACIS-I-1	7.24	2485	-0.057	0.011	0.024	0.036	0.000000	0.000000	931.77	-835.96
1	FID	ACIS-I-2	7.14	2485	-0.167	-0.081	0.009	0.014	0.000000	0.000000	-762.14	-842.73
2	FID	ACIS-I-4	7.18	2485	0.128	0.140	0.025	0.034	0.000000	0.000000	2151.63	1063.68
3	GUIDE	1197883808	8.18	4969	0.053	-0.013	0.062	0.101	21.001789	-72.324407	-1942.02	1183.35
4	GUIDE	1197885104	9.36	4965	0.115	0.086	0.137	0.217	17.845067	-72.189368	-513.87	-2008.24
5	GUIDE	1198269920	8.27	4968	-0.044	-0.162	0.074	0.116	20.316466	-73.033728	625.86	1864.52
6	GUIDE	1198283128	7.93	4969	-0.141	0.083	0.057	0.093	17.272580	-72.642428	1187.21	-1616.13
7	GUIDE	1198282744	9.02	4965	0.022	-0.003	0.106	0.163	17.028326	-73.013356	2437.33	-1079.63

2.4 Star Slots

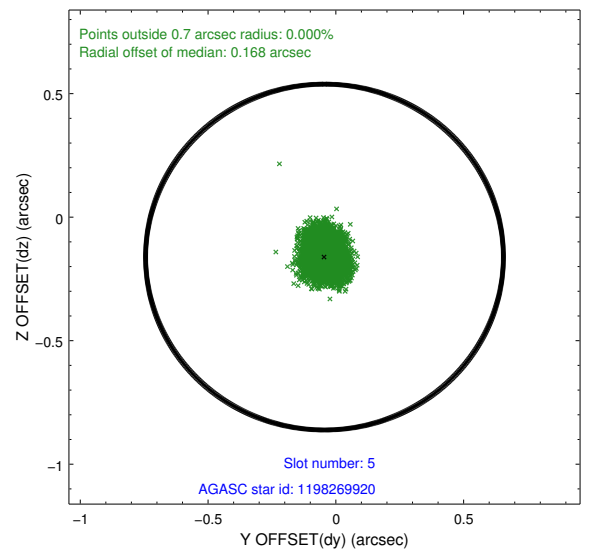
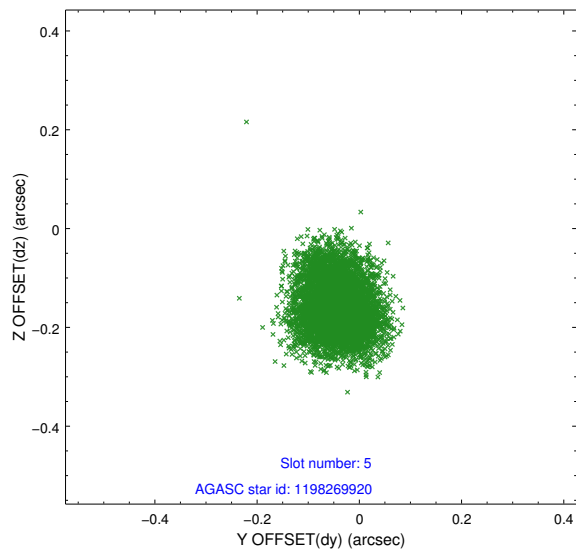
2.4.1 Slot 3



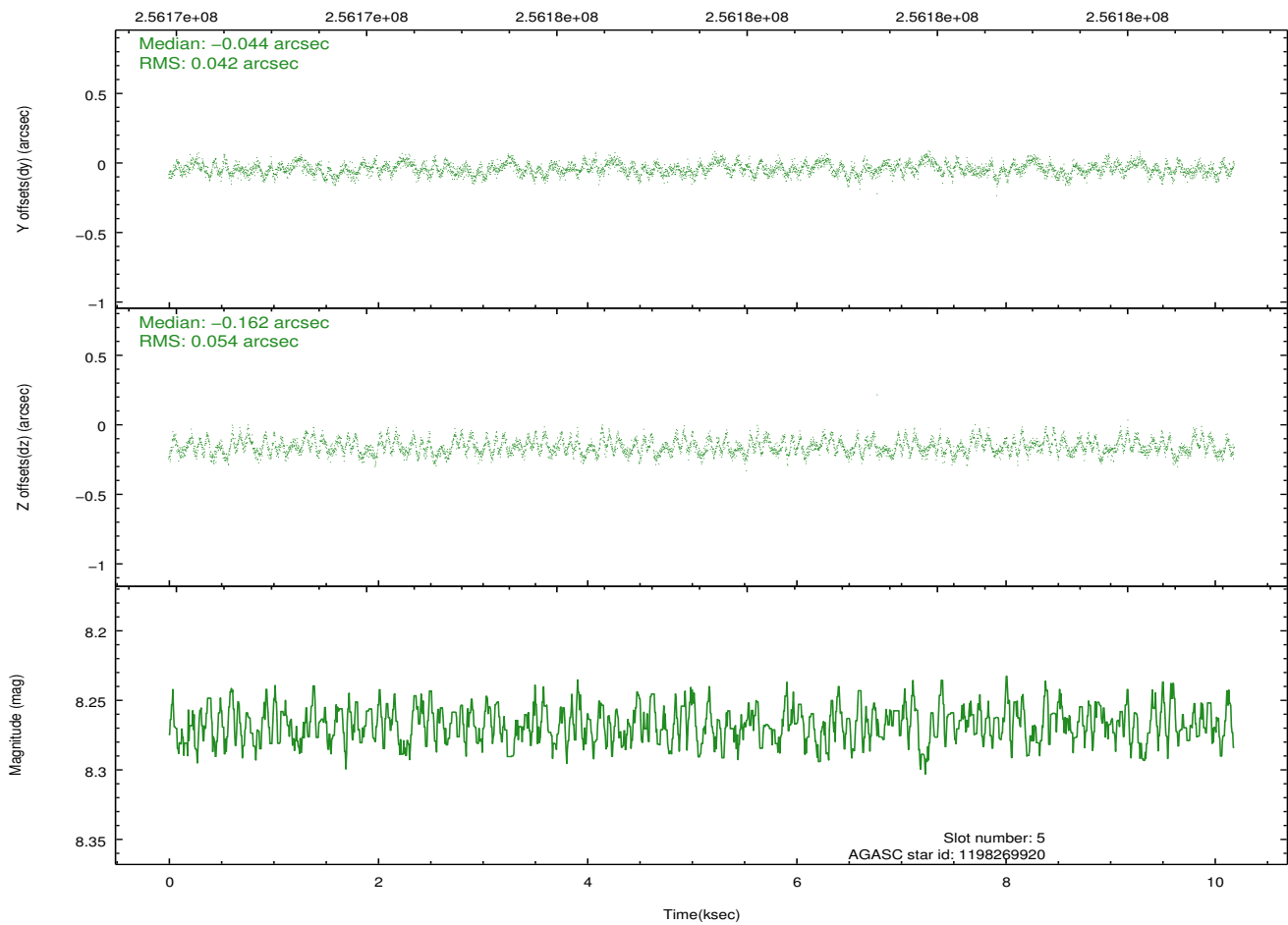
2.4.2 Slot 4



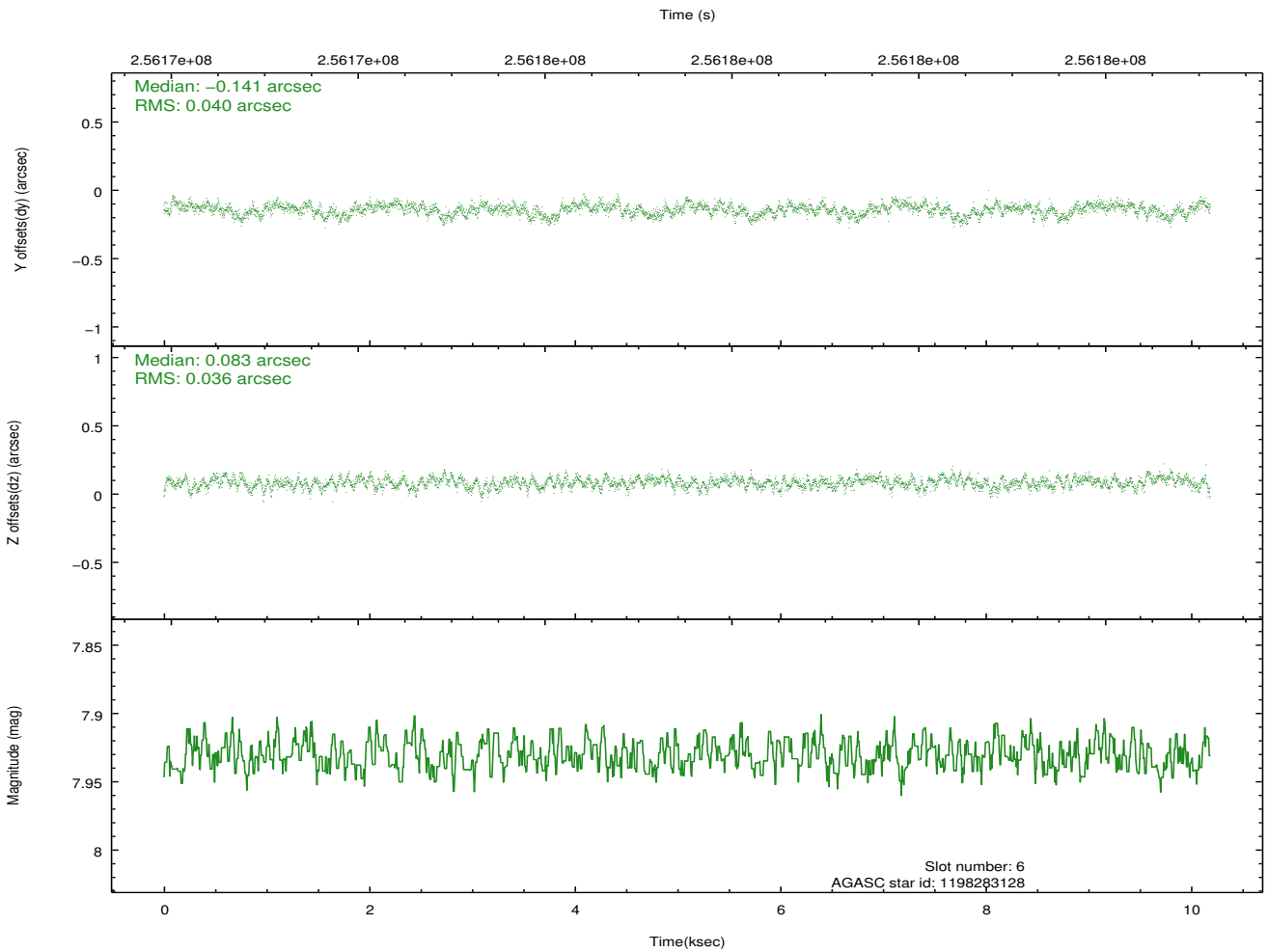
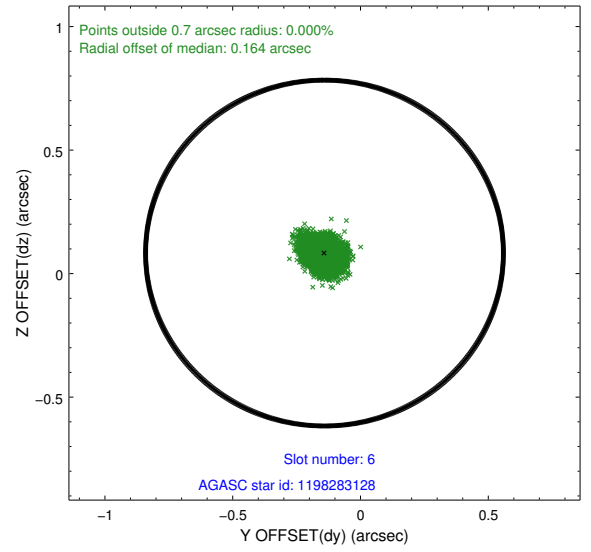
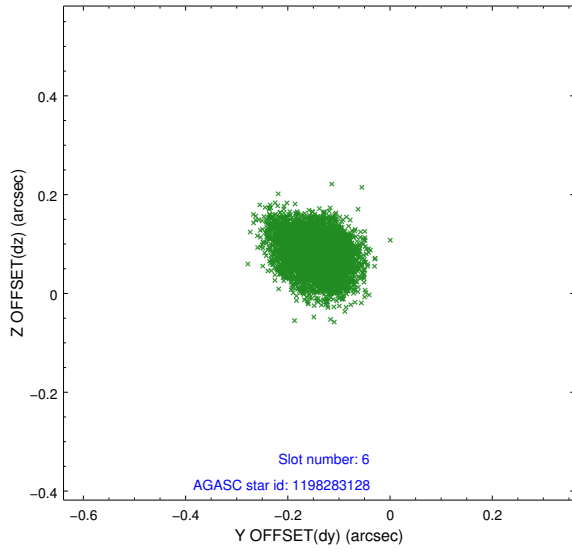
2.4.3 Slot 5



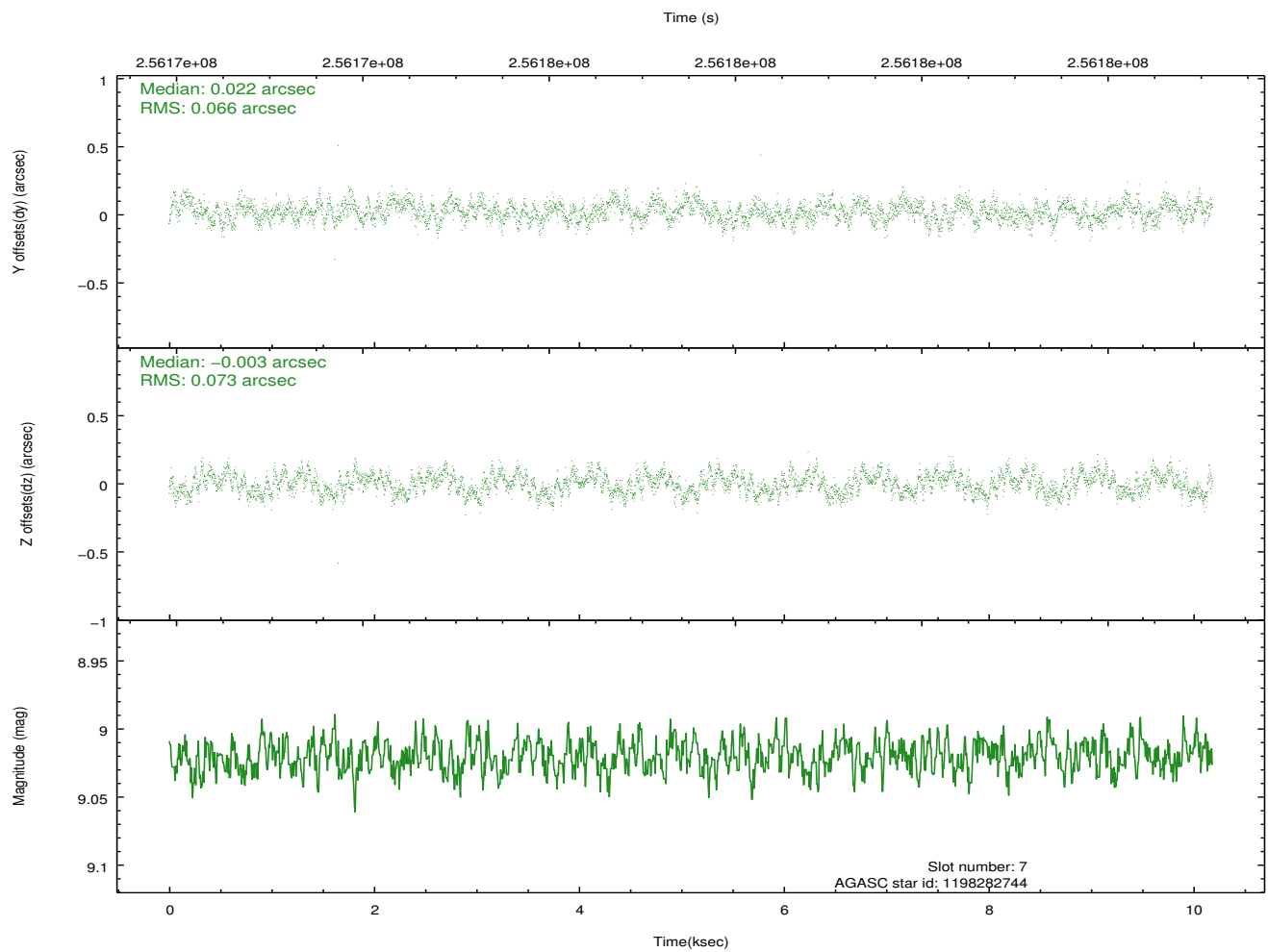
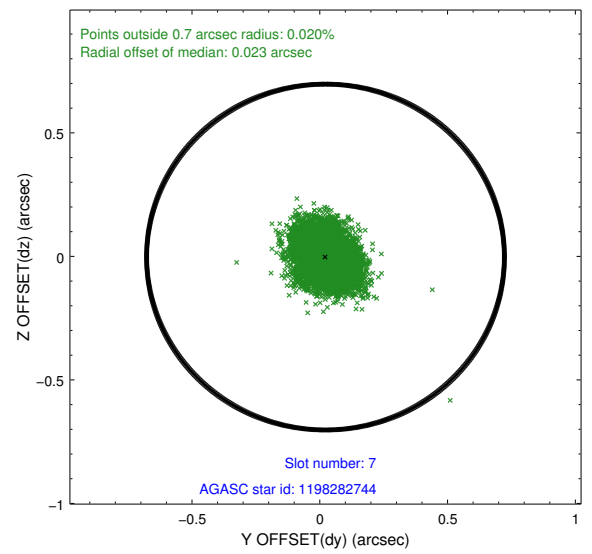
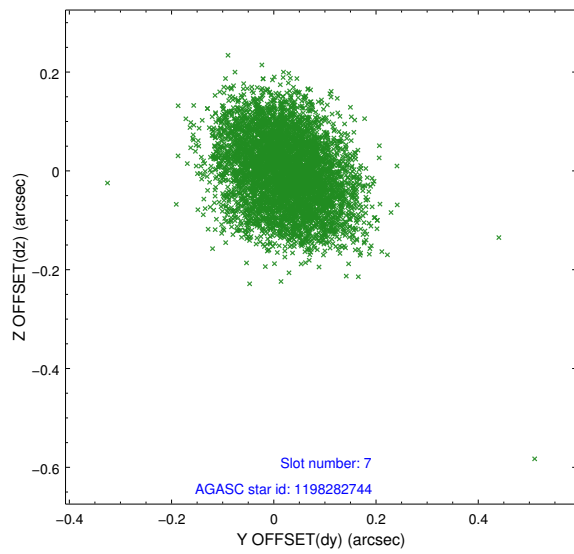
Time (s)



2.4.4 Slot 6

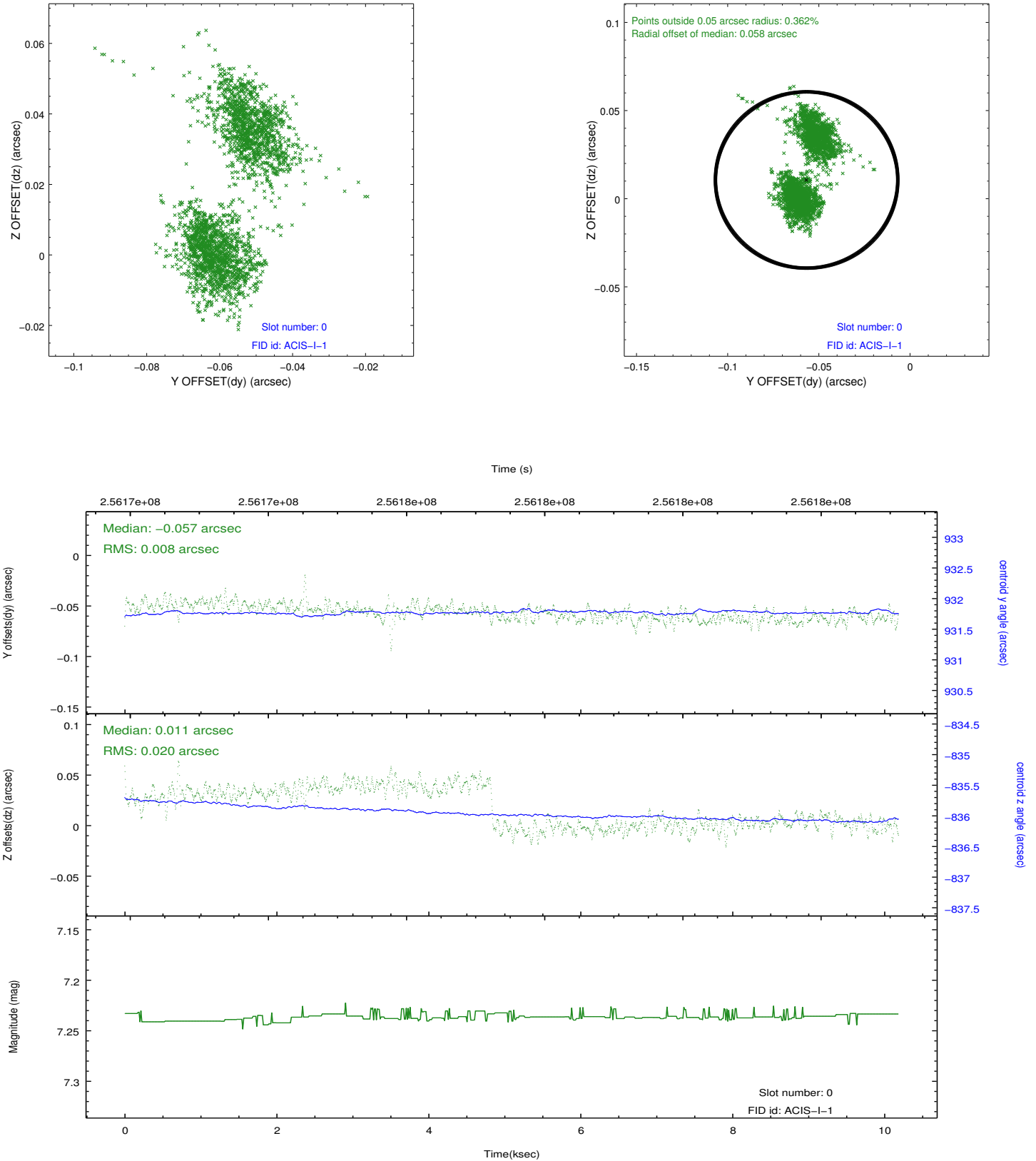


2.4.5 Slot 7

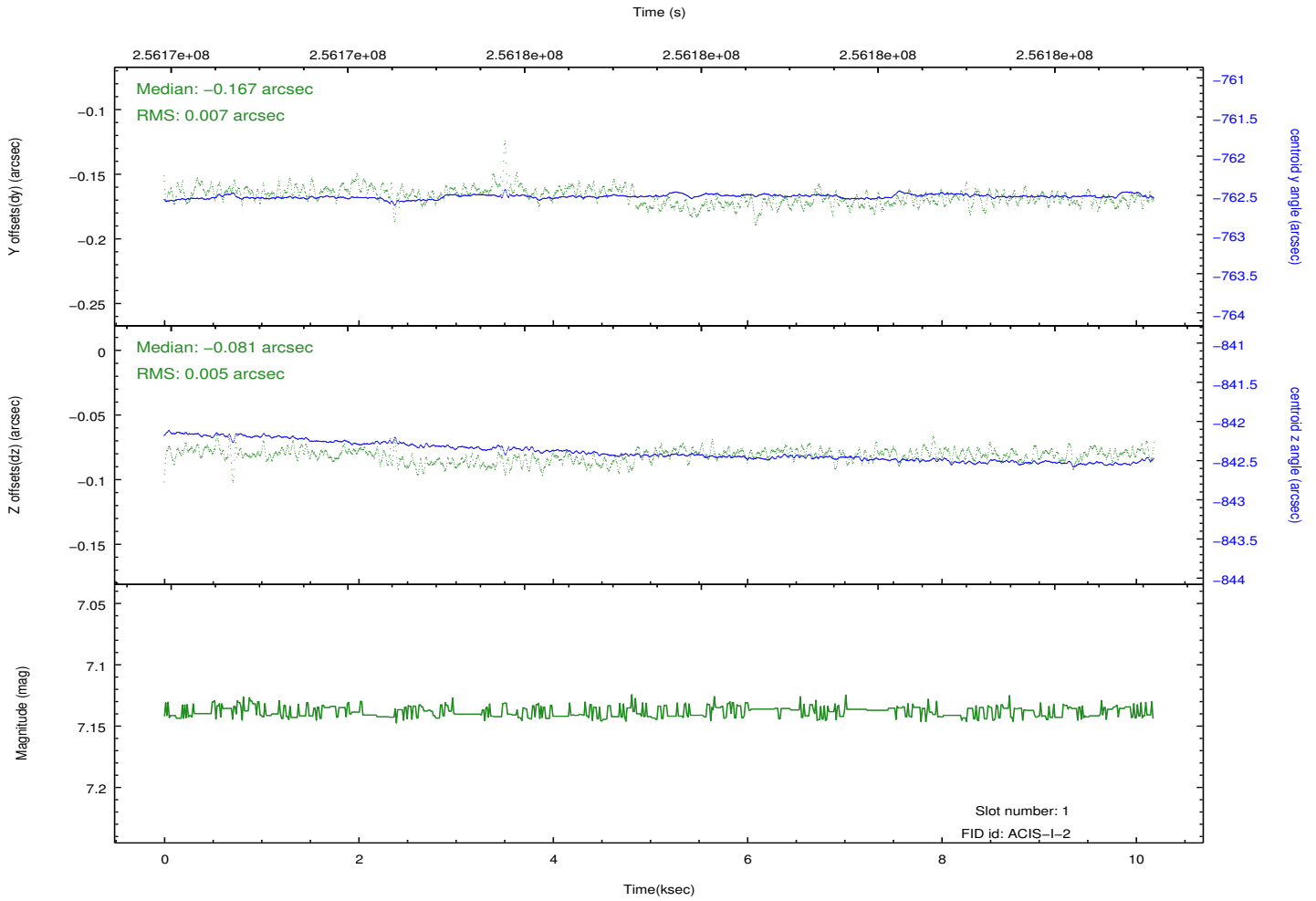
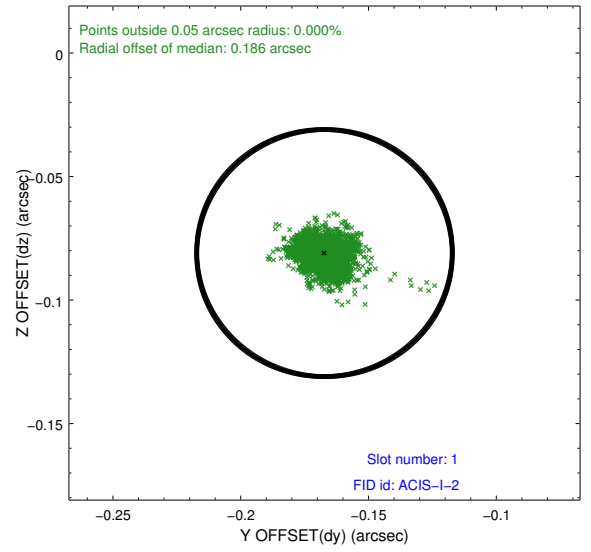
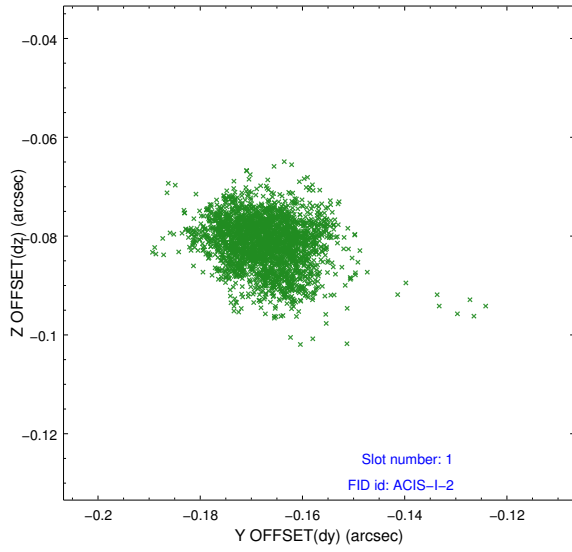


2.5 FID Slots

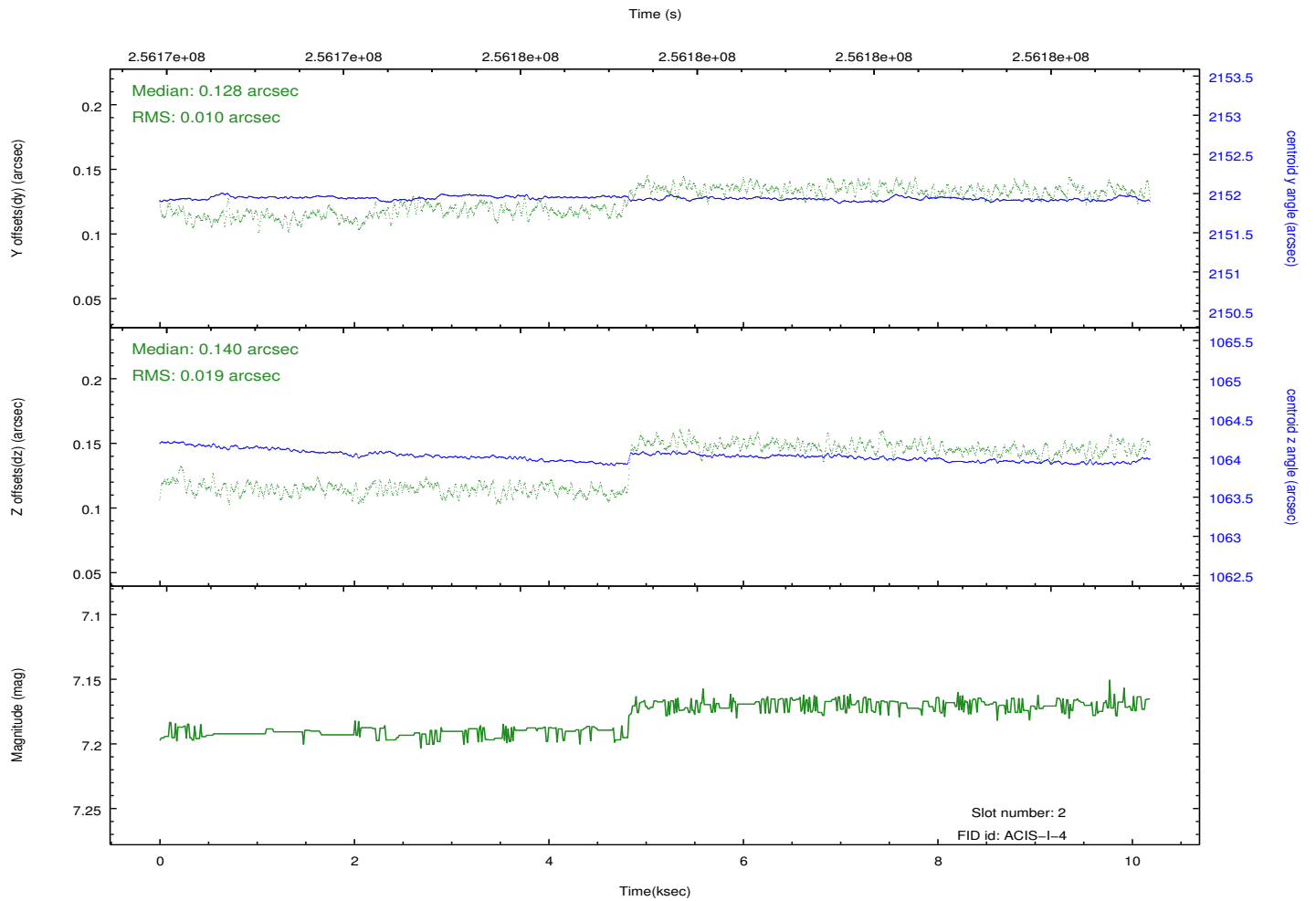
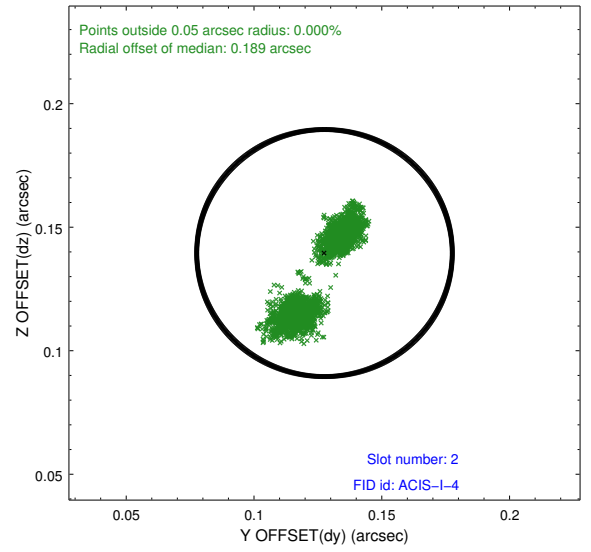
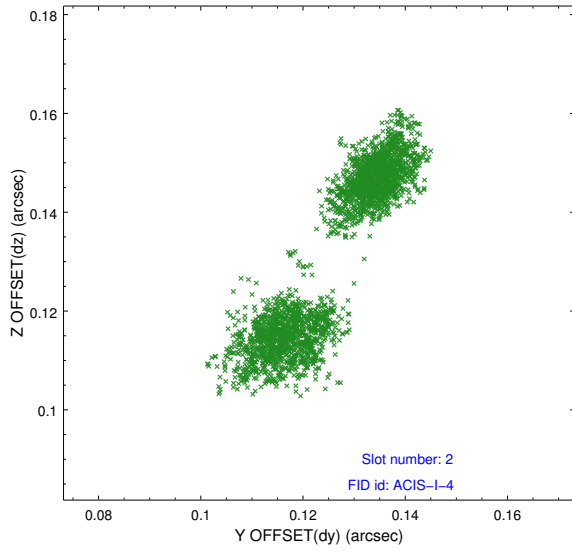
2.5.1 Slot 0



2.5.2 Slot 1



2.5.3 Slot 2



A Summary

A.1 Status

V&V Scientist	Beth Sundheim
V&V Date (YYYY-MM-DD)	2012.03.27
V&V Edition	1
V&V Disposition and Status	OK
V&V Charge Time	9.75359996

A.2 Comments