

# V&V Reference Report

## L2 ASCDS Version : 8.5.1

Observation 5579 - L2 Version 3  
Chandra X-Ray Center

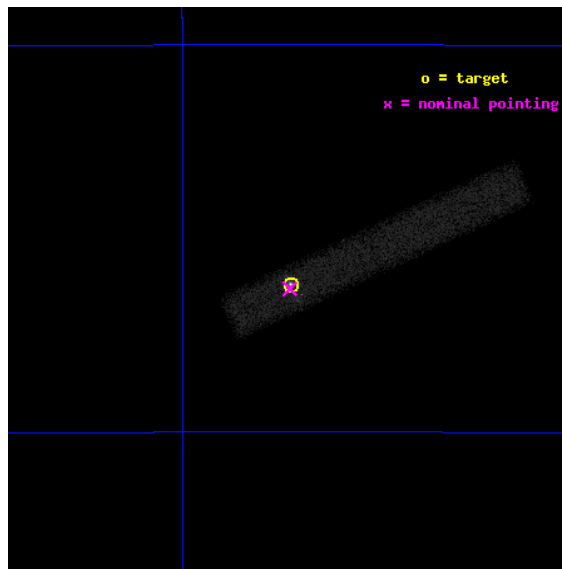
L2 Processing Date : Dec 15 2012

## Contents

<b>1</b>	<b>Front</b>	<b>2</b>
<b>2</b>	<b>OBI</b>	<b>3</b>
2.1	OBI . . . . .	3
2.1.1	Images . . . . .	3
2.1.2	Bias . . . . .	3
2.1.3	Parameters . . . . .	4
2.1.4	Events . . . . .	4
2.2	Compared Parameters . . . . .	5
2.3	Aspect . . . . .	6
2.4	Star Slots . . . . .	9
2.4.1	Slot 3 . . . . .	9
2.4.2	Slot 4 . . . . .	10
2.4.3	Slot 5 . . . . .	11
2.4.4	Slot 6 . . . . .	12
2.4.5	Slot 7 . . . . .	13
2.5	FID Slots . . . . .	14
2.5.1	Slot 0 . . . . .	14
2.5.2	Slot 1 . . . . .	15
2.5.3	Slot 2 . . . . .	16
<b>A</b>	<b>Summary</b>	<b>17</b>
A.1	Status . . . . .	17
A.2	Comments . . . . .	17

# 1 Front

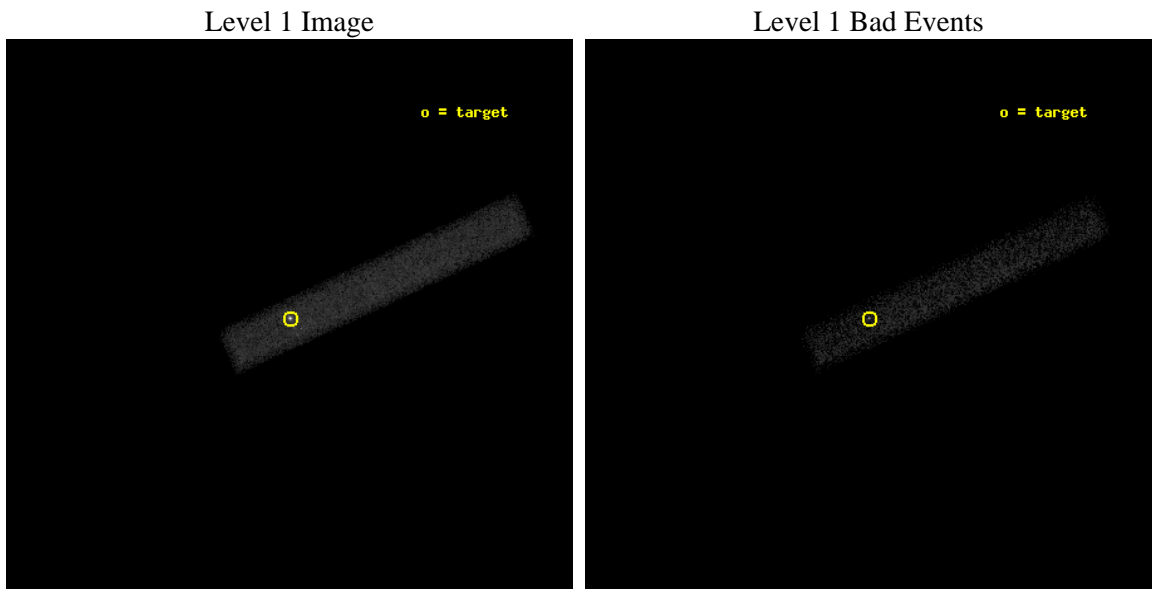
seq_num	500568	Sequence number
obs_id	5579	Observation id
title	Chandra AO6 Monitoring Images of SNR1987A	Proposal title
observer	Prof. David Burrows	Principal investigator
object	SNR1987A	Source name
dtcycle	0	&#160
cycle	P	events from which exps? Prim/Second/Both
ra_targ	83.866667	Observer's specified target RA [deg]
dec_targ	-69.26975	Observer's specified target Dec [deg]
ra_nom	83.867903115643	Nominal RA [deg]
dec_nom	-69.271804992778	Nominal Dec [deg]
roll_nom	335.20967474254	Nominal Roll [deg]
revision	3	Processing version of data
ontime	35138.400523573	Sum of GTIs [s]
livetime	31868.674518024	Livetime [s]
ontime7	35138.400523573	Sum of GTIs [s]
l2events	37874	Number of level 2 events



## 2 OBI

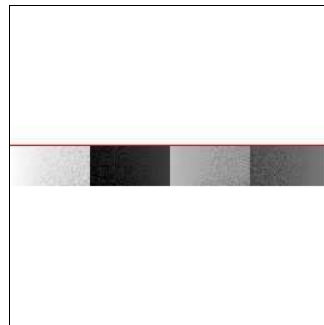
### 2.1 OBI

#### 2.1.1 Images



#### 2.1.2 Bias

Chip 7



### 2.1.3 Parameters

obi_num	0	Obi number	sched_exp_time	35000.000000	[s] Scheduled observation exposure time
ascdsver	8.5.1	Processing system revision	ontime	35138.400523573	Sum of GTIs [s]
caldbver	4.5.5	&#160	ontime7	35138.400523573	Sum of GTIs [s]
date	2012-12-15T23:03:56	Date and time of file creation	l1events	64451	Number of level 1 events
revision	3	Processing version of data			

### 2.1.4 Events

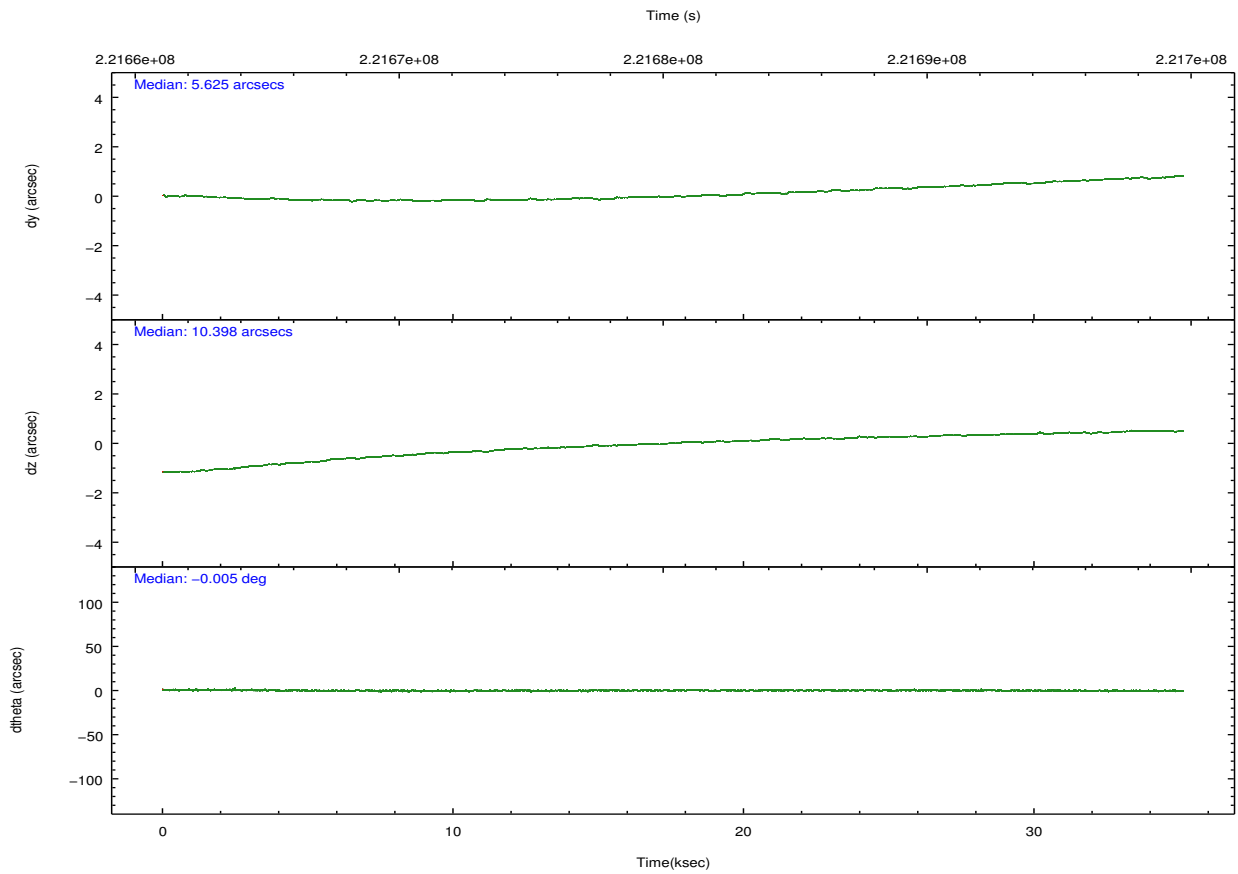
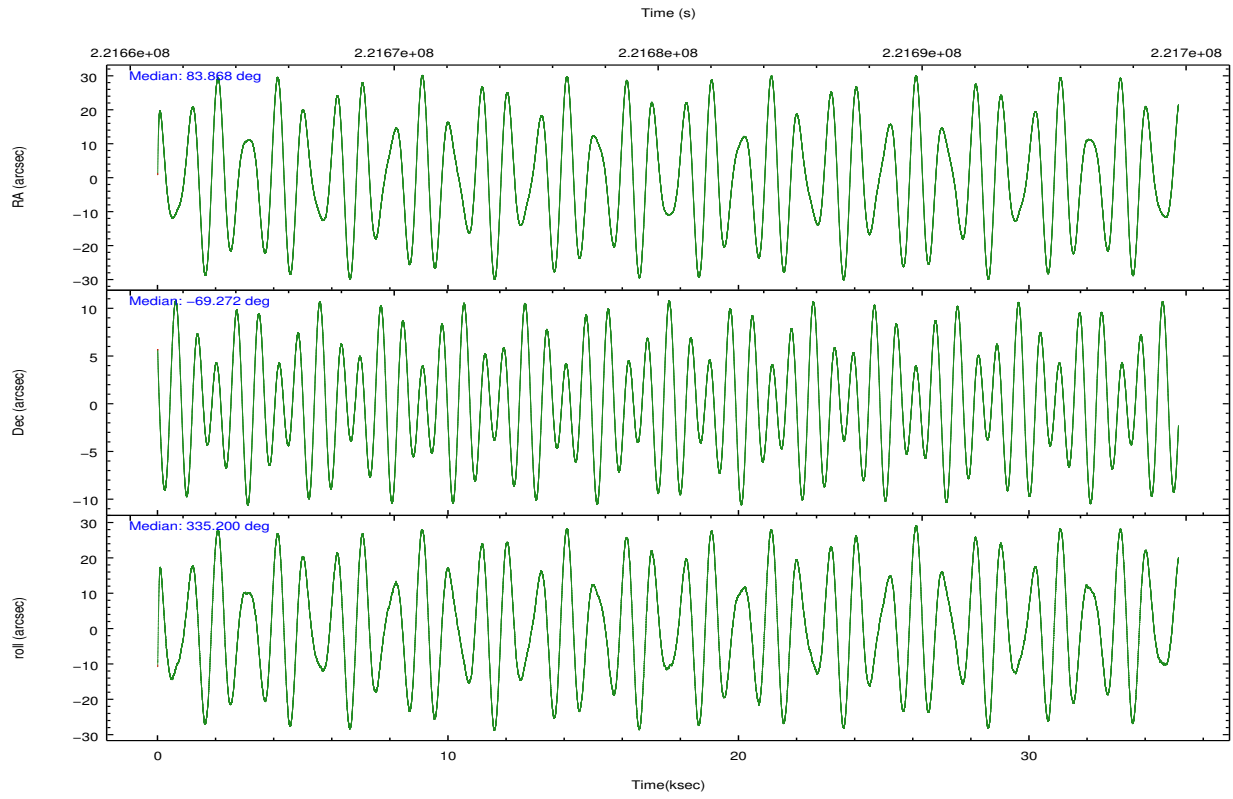
	<b>ccd 7</b>
level 1 events	64451
rejected events	25771
rejected %	<b>39%</b>

	<b>ccd 7</b>
grade 0 events	7898
	12%
grade 1 events	132
	0%
grade 2 events	9115
	14%
grade 3 events	4878
	7%
grade 4 events	4793
	7%
grade 5 events	4488
	6%
grade 6 events	12634
	19%
grade 7 events	20513
	31%

## 2.2 Compared Parameters

Parameter	Planned	Actual	Parameter	Planned	Actual
Instrument	ACIS	ACIS	Obspar format version number	7	7
Detector	ACIS-7	ACIS-7	Obspar file type	PREDICTED	ACTUAL
Grating	NONE	NONE	Obspar update status	NONE	UPDATED
Data mode	VFAINT	VFAINT	Number of optional ACIS chips dropped	0	0
Observation mode	POINTING	POINTING	On-chip summing requested	N	N
[deg] Pointing RA	83.791334	83.86790311564286	Subarray requested	CUSTOM	1/8
[deg] Pointing Dec	-69.274609	-69.27180499277819	Subarray start row	449	449
[deg] Pointing Roll	334.981441	335.2096747425358	Subarray row count	128	128
[s] Window start time (MET)	221616064.184000	221616064.184000	Alternating exposures requested	N	N
[s] Window stop time (MET)	223171264.184000	223171264.184000	[s] Primary exposure time	0.000000	0.4
[mm] SIM focus pos	-0.684267	-0.6828225247311905			
[mm] SIM defocus	0	0.001444936568705701			
[mm] SIM translation stage pos	-190.132523	-190.1400660498719			
[mm] SIM translation stage offset	0	0.00754346686406393			
[s] Observation start time (MET)	221662947.184000	221661820.23272			
Observation start date	2005-01-09T13:01:23	2005-01-09T12:43:40			
[s] Observation end time (MET)	221697947.184000	221699608.39692			
Observation end date	2005-01-09T22:44:43	2005-01-09T23:13:28			
Read mode	TIMED	TIMED			

## 2.3 Aspect

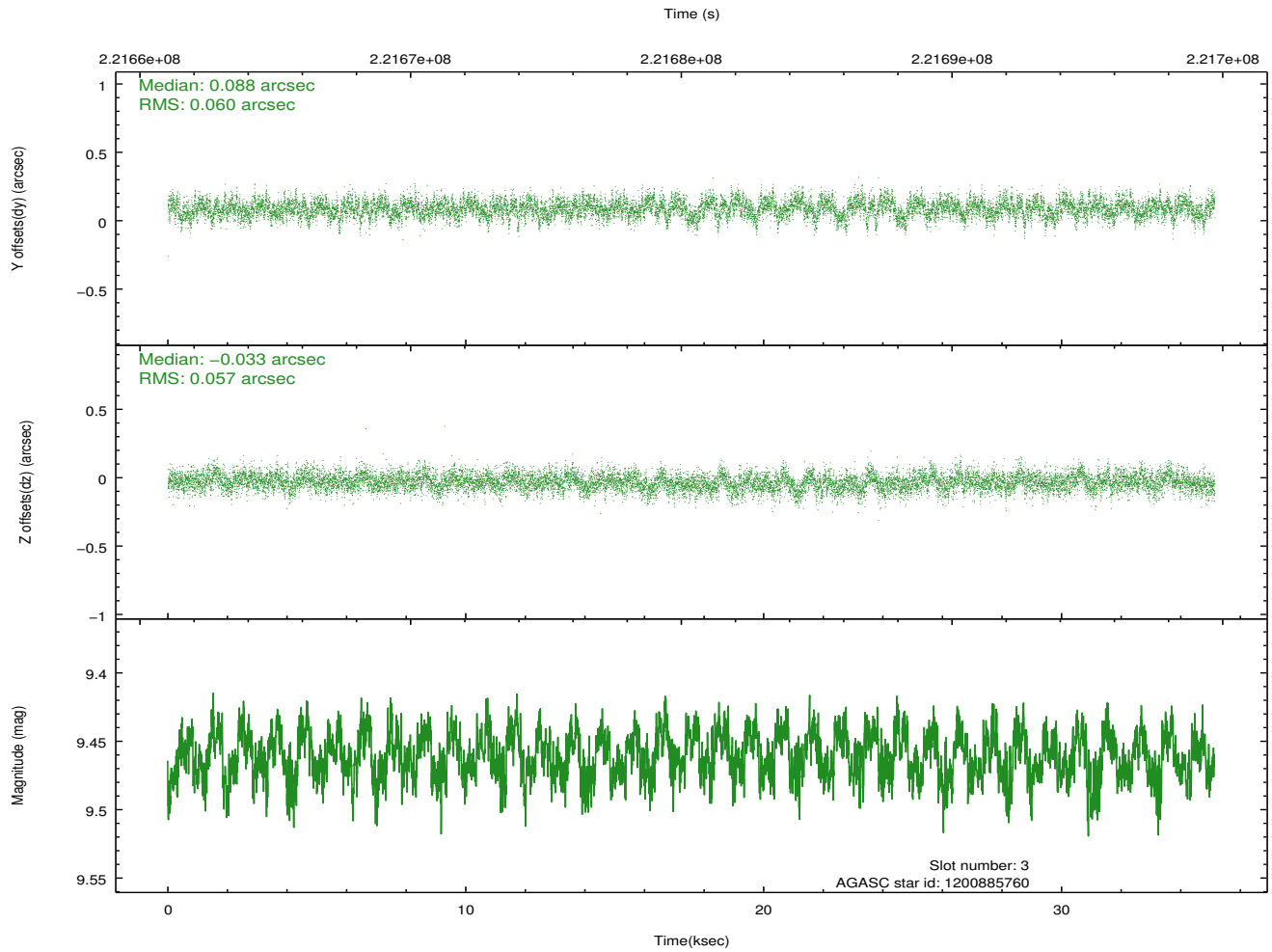
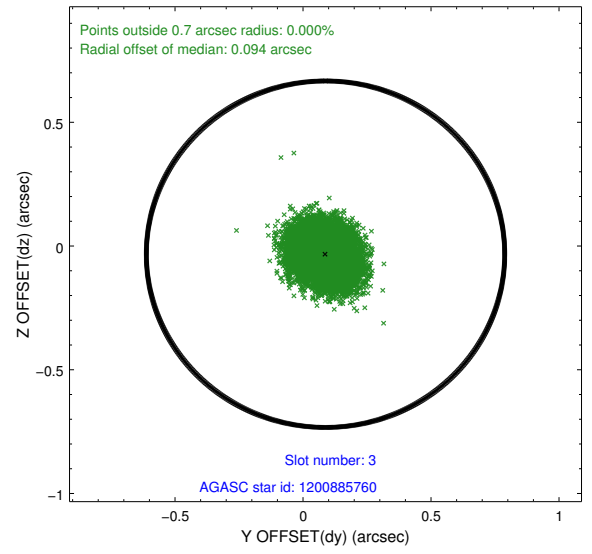
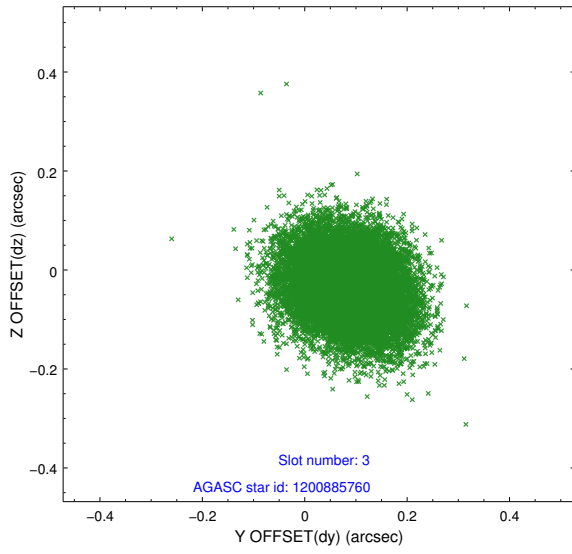


### Slot Statistics

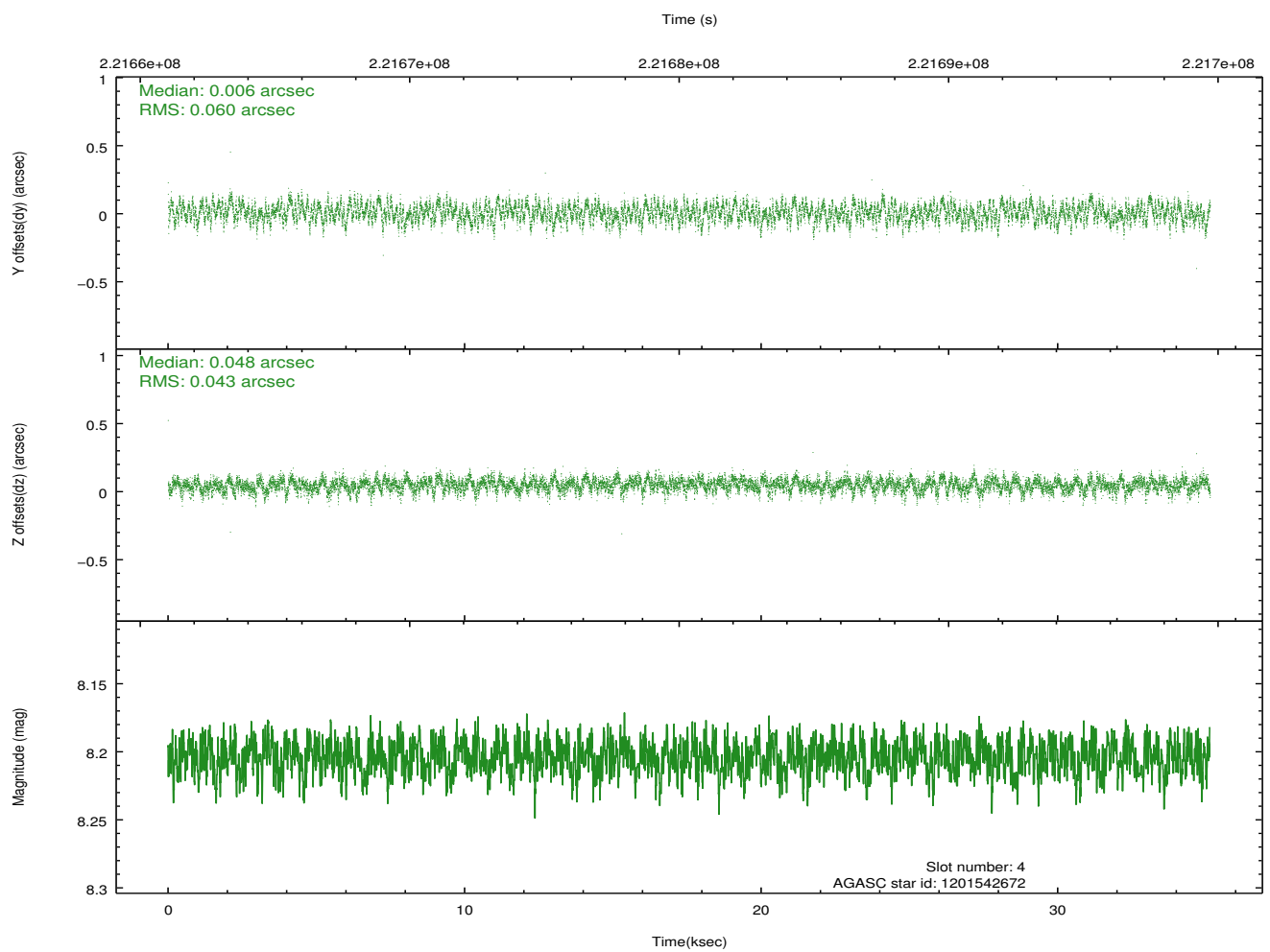
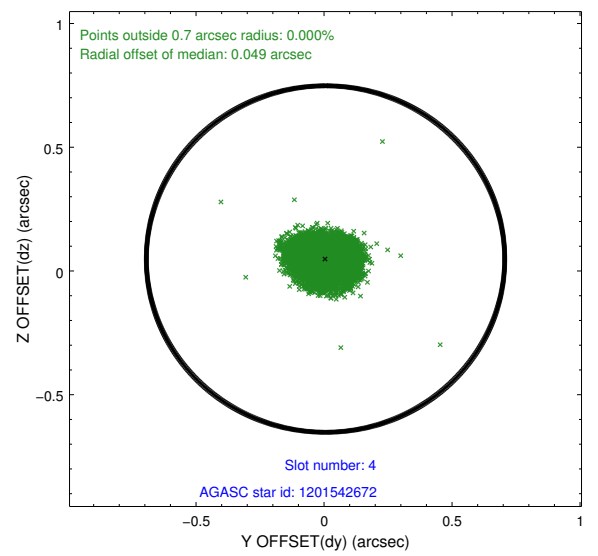
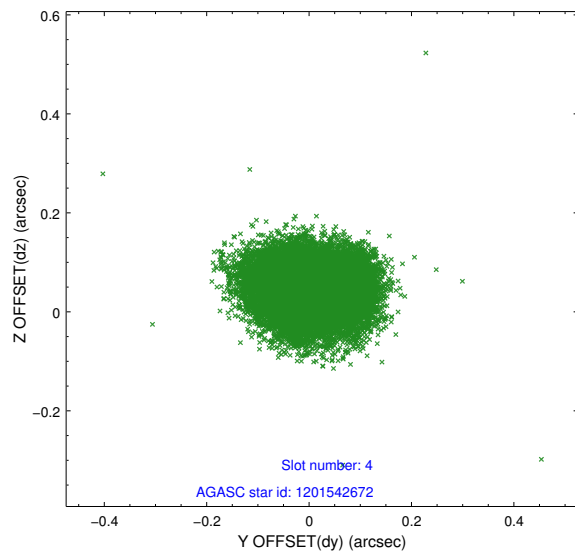
slot	status	id	mag	n_pts	med_dy	med_dz	dr1	dr2	ra	dec	mean_y	mean_z
0	FID	ACIS-S-1	7.18	8571	0.017	-0.040	0.030	0.042	0.000000	0.000000	937.56	-1727.22
1	FID	ACIS-S-5	7.23	8571	-0.082	-0.001	0.013	0.020	0.000000	0.000000	-1811.49	170.37
2	FID	ACIS-S-6	7.35	8571	0.048	0.059	0.032	0.052	0.000000	0.000000	403.13	814.40
3	GUIDE	1200885760	9.46	17132	0.088	-0.033	0.088	0.145	83.723637	-68.777667	-836.44	1583.97
4	GUIDE	1201542672	8.20	17138	0.006	0.048	0.079	0.125	84.492488	-69.957531	1826.12	-1864.82
5	GUIDE	1200884248	9.48	17128	-0.053	-0.202	0.111	0.181	83.880915	-68.565170	-973.37	2364.20
6	GUIDE	1201411288	9.24	17128	-0.132	0.031	0.106	0.169	81.410076	-69.595403	-2194.60	-2362.55
7	GUIDE	1201410616	9.33	17126	0.085	0.160	0.123	0.217	82.516808	-69.784406	-653.02	-2348.22

## 2.4 Star Slots

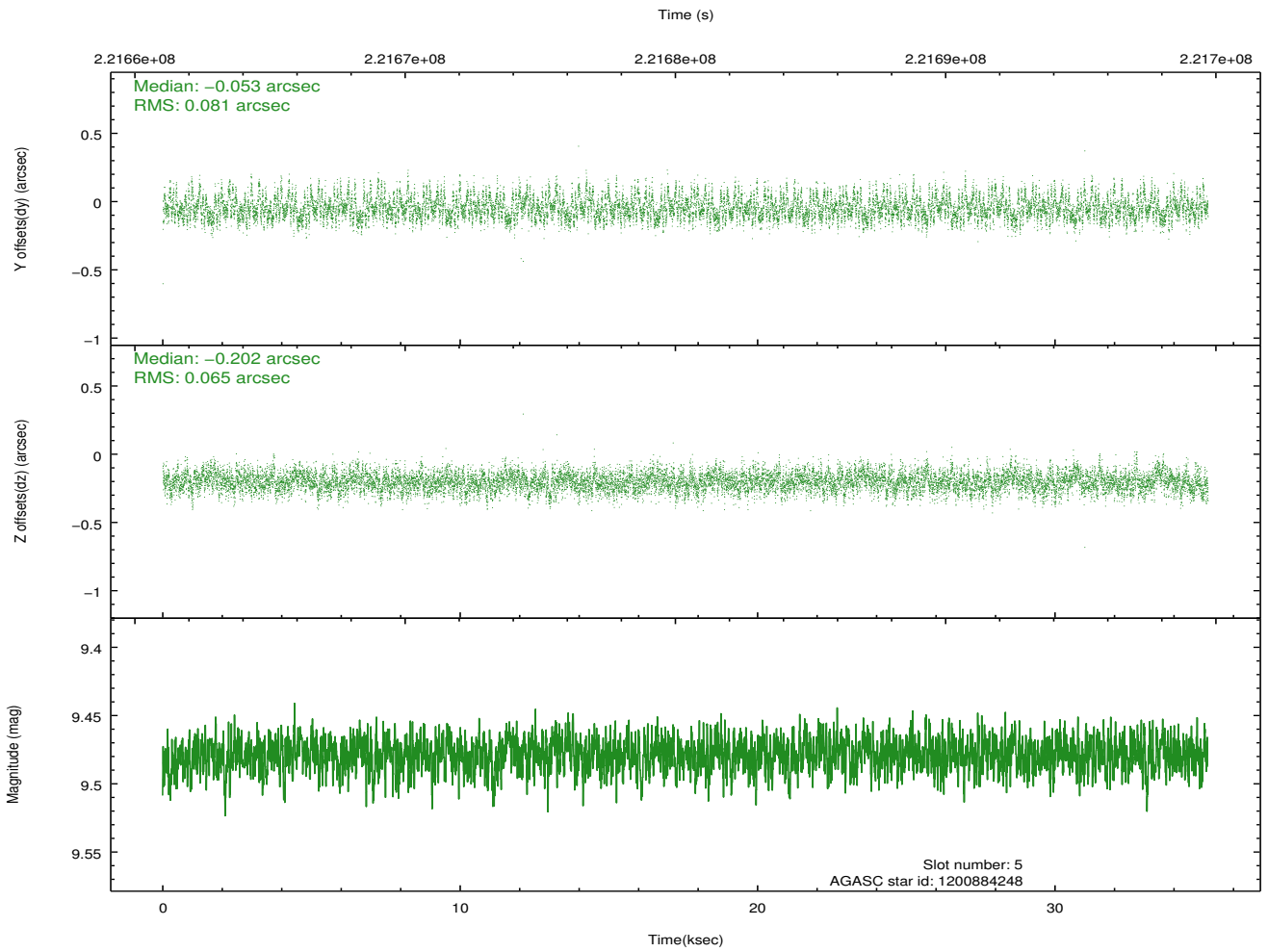
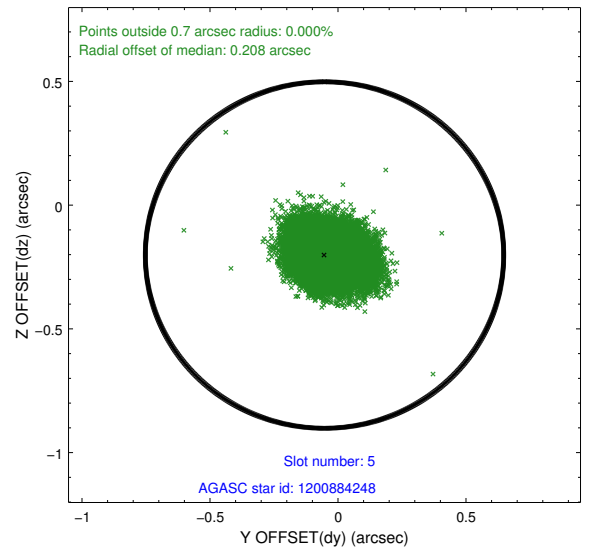
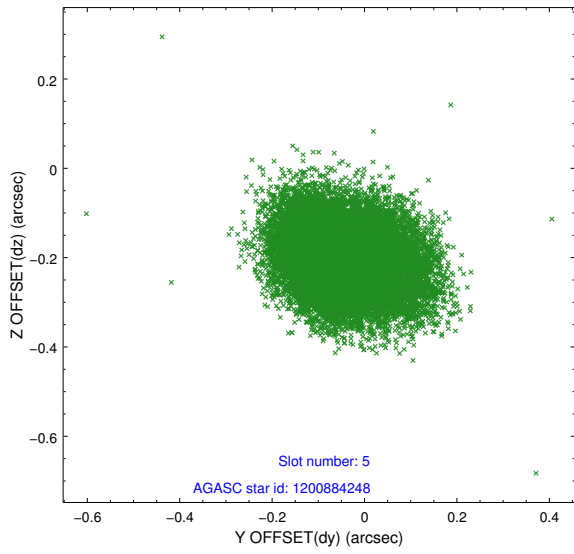
### 2.4.1 Slot 3



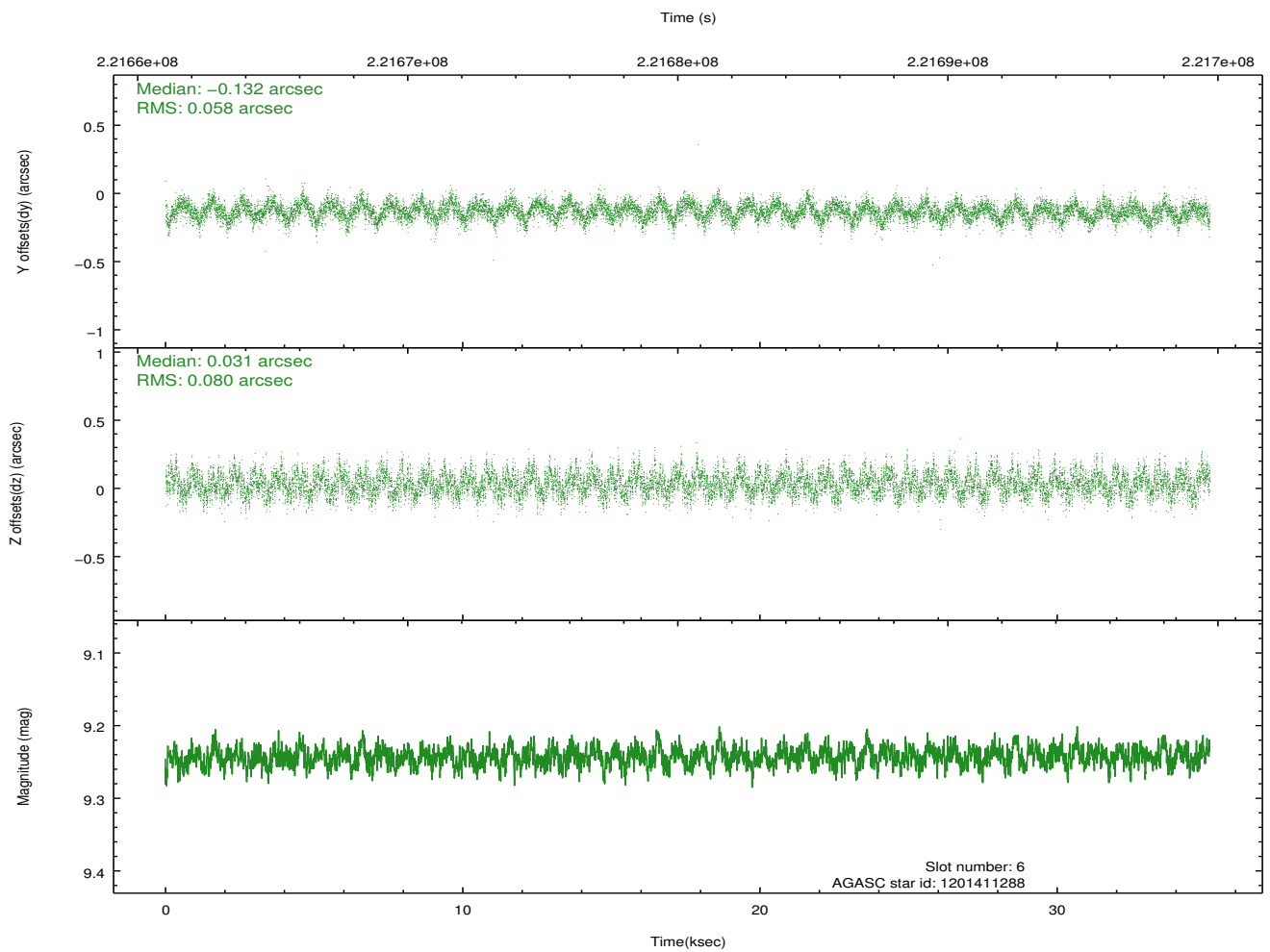
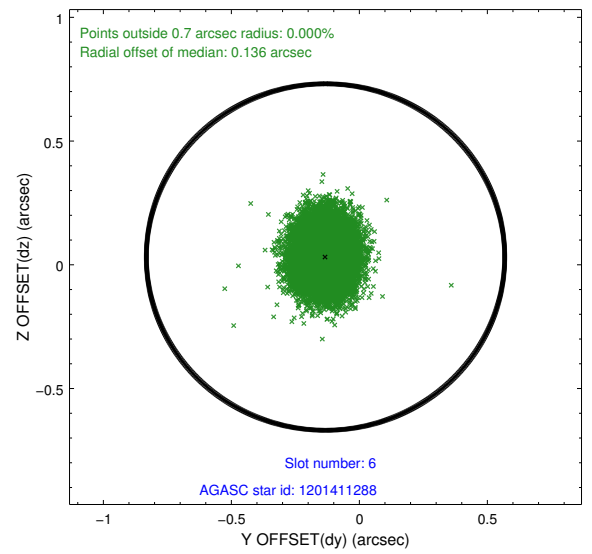
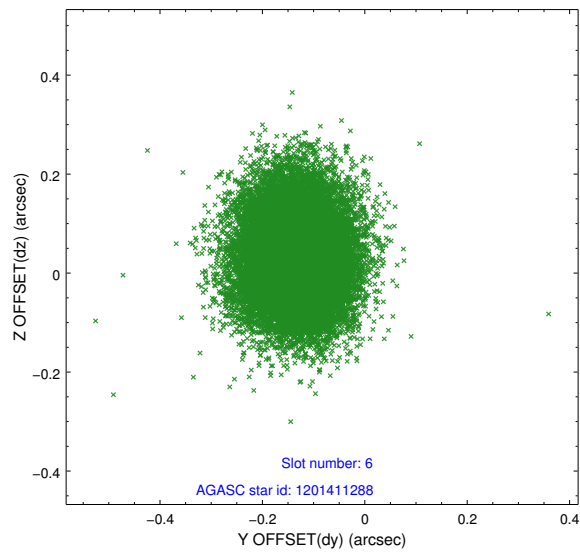
## 2.4.2 Slot 4



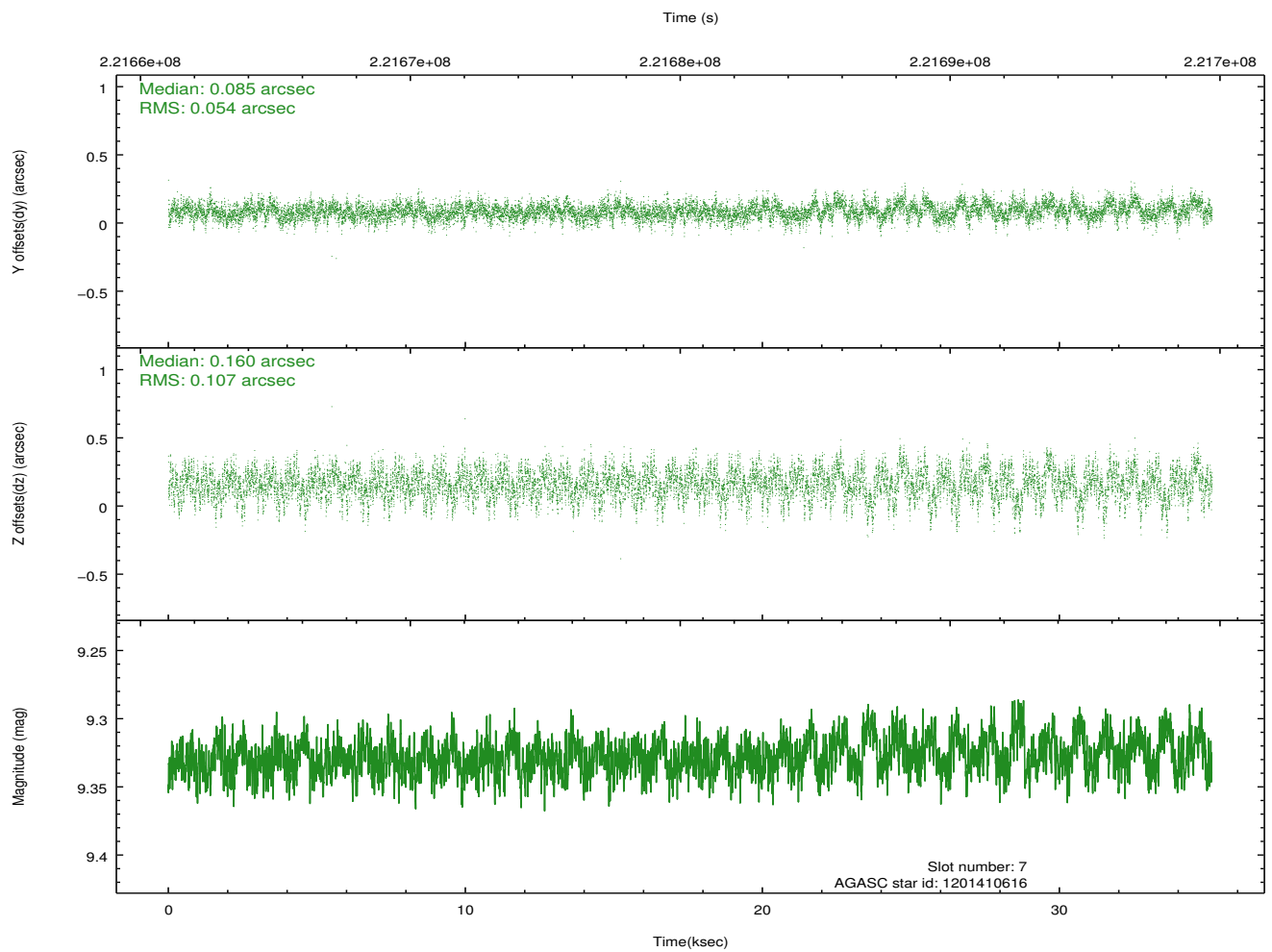
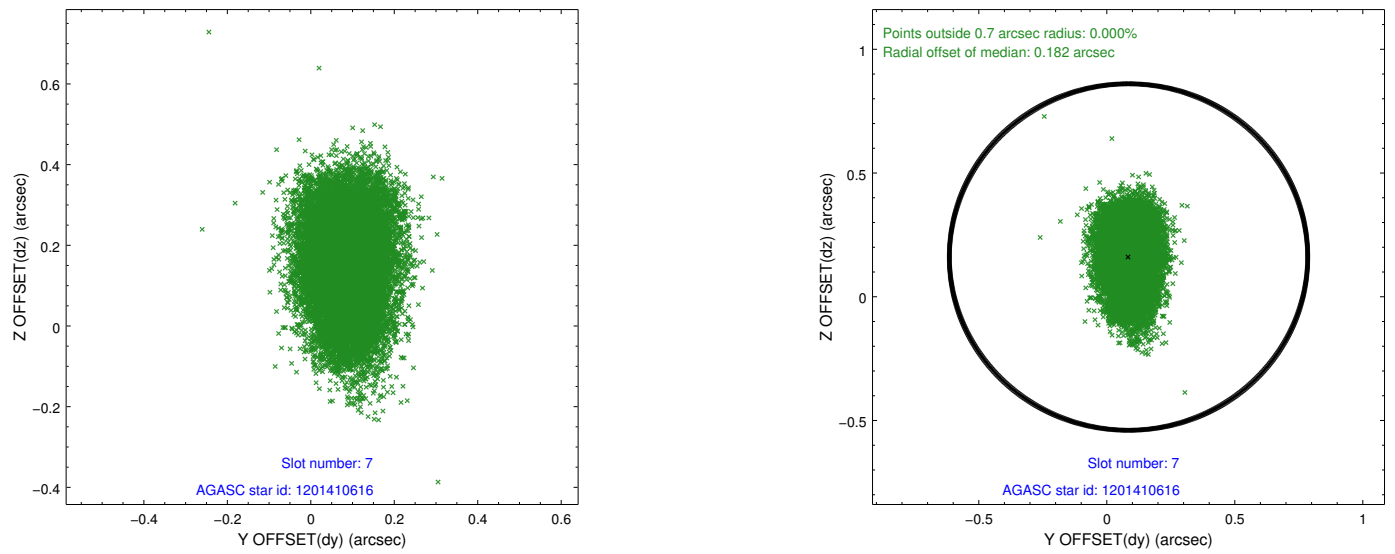
### 2.4.3 Slot 5



### 2.4.4 Slot 6

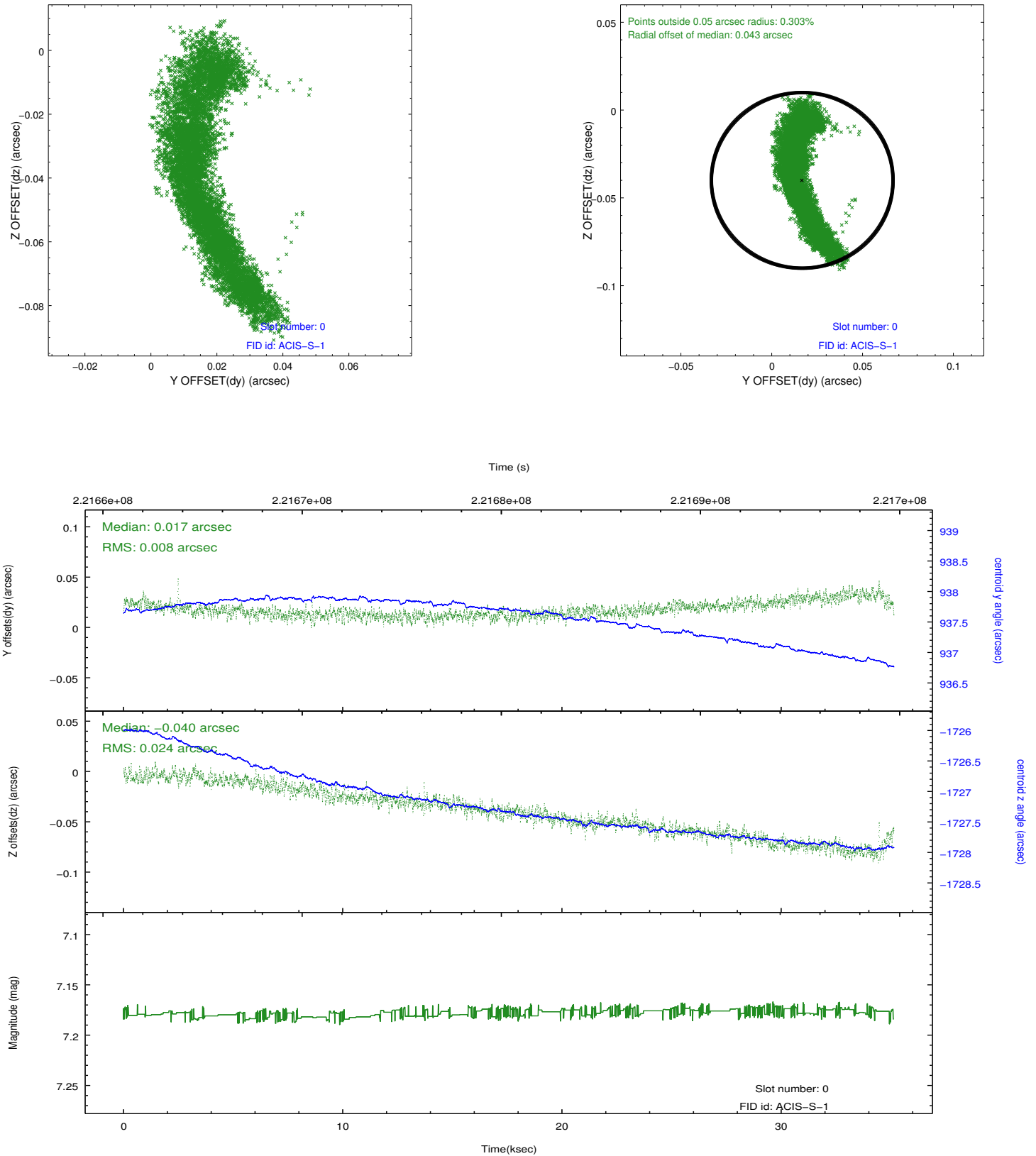


## 2.4.5 Slot 7

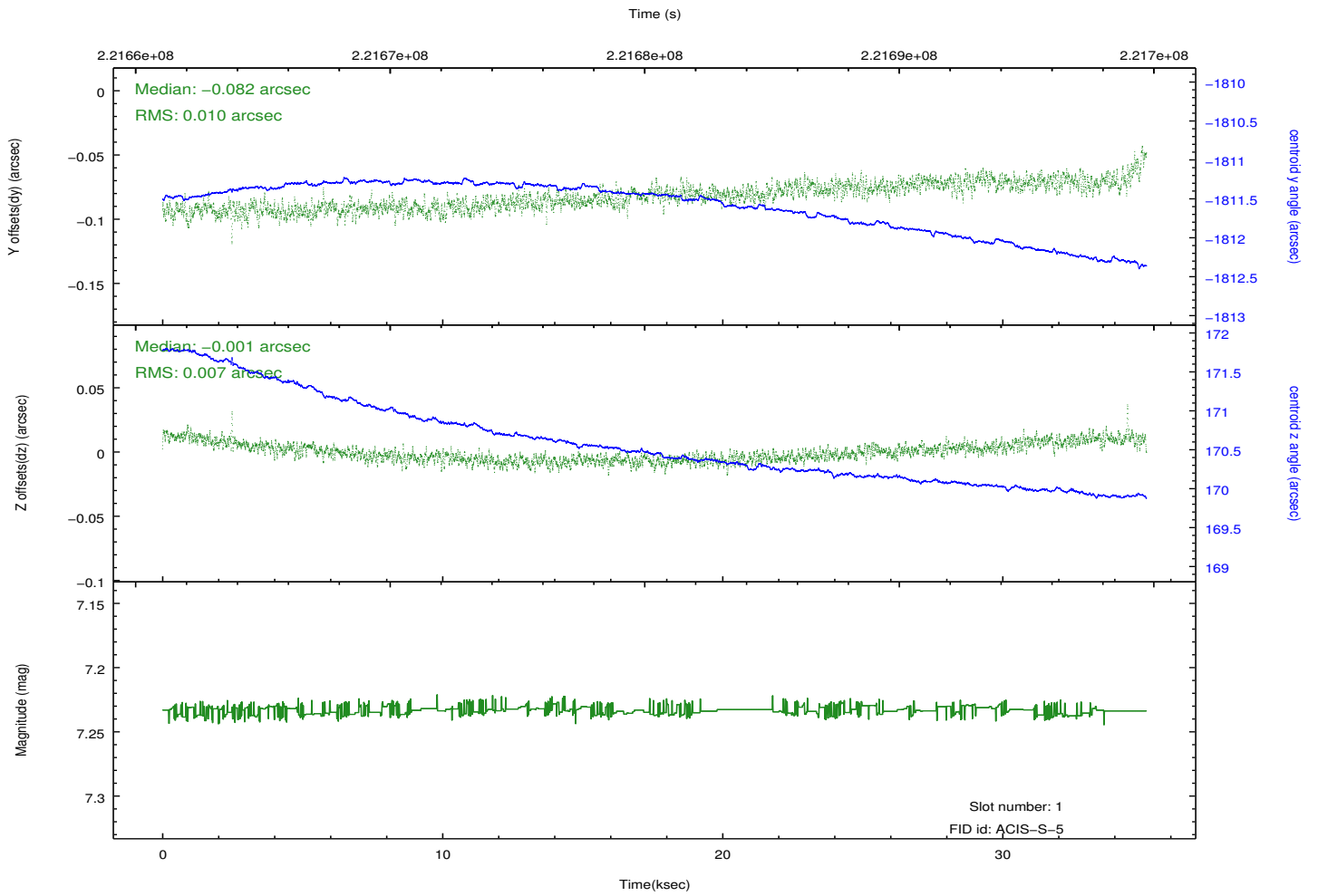
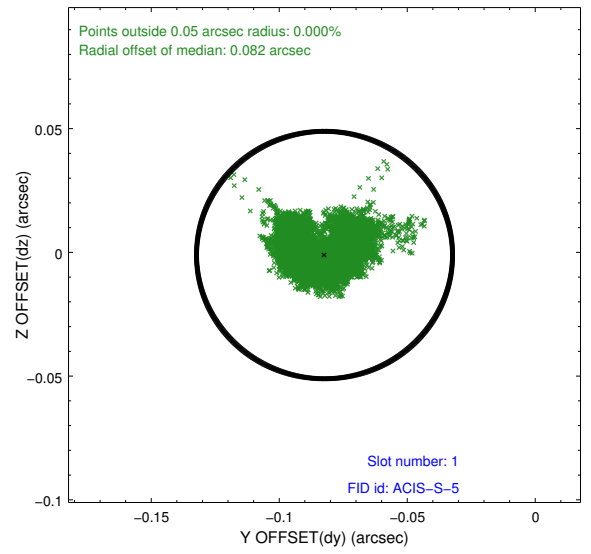
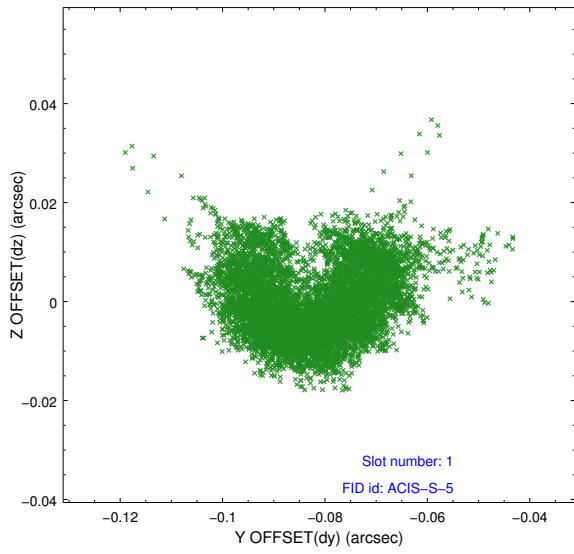


## 2.5 FID Slots

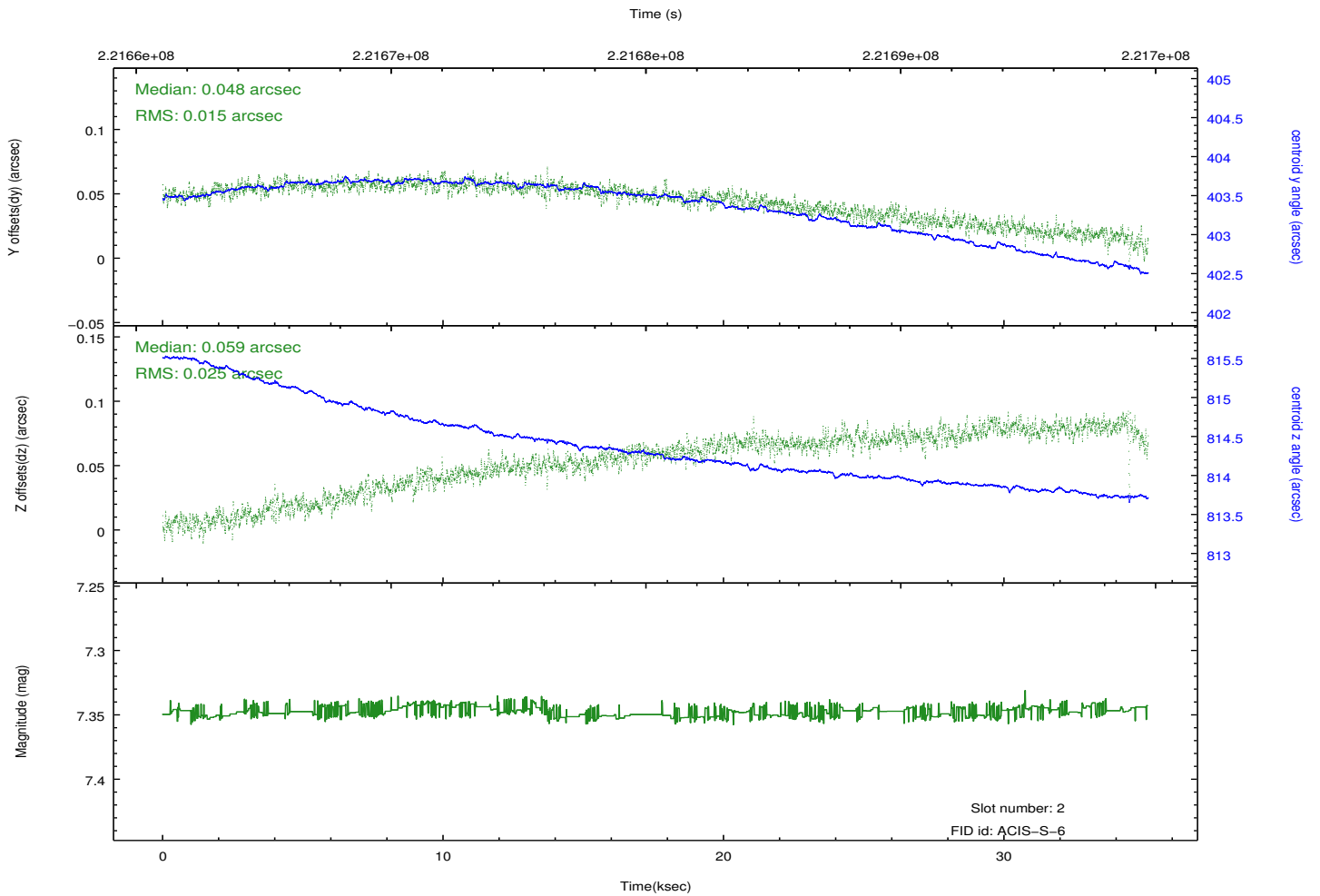
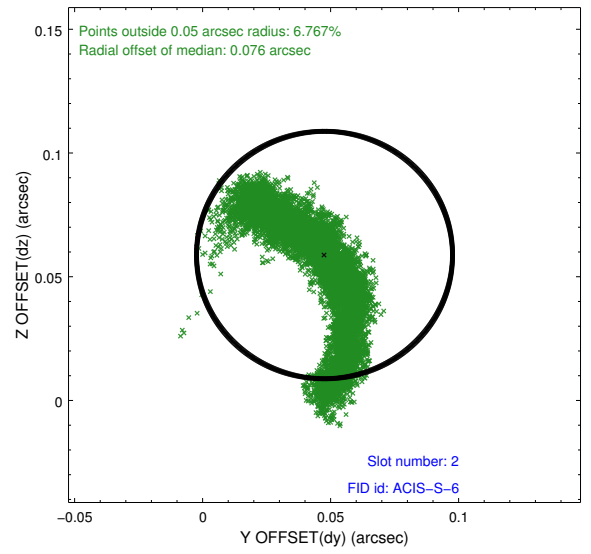
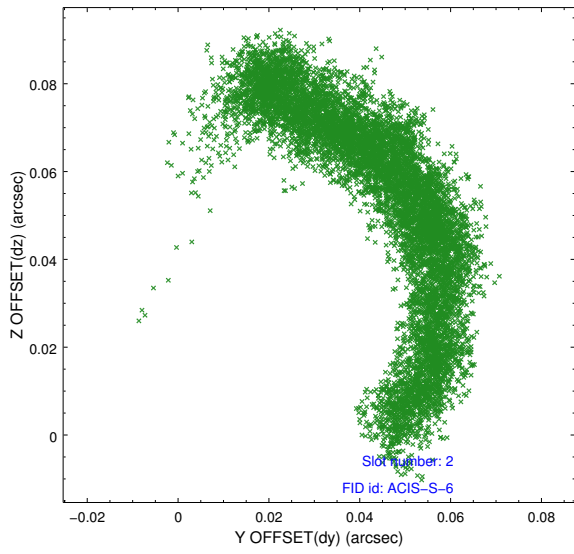
### 2.5.1 Slot 0



## 2.5.2 Slot 1



### 2.5.3 Slot 2



# A Summary

## A.1 Status

V&V Scientist	Jen Lauer
V&V Date (YYYY-MM-DD)	2013.01.08
V&V Edition	1
V&V Disposition and Status	OK
V&V Charge Time	35.1384

## A.2 Comments

Window constraint met.