

# V&V Reference Report

## L2 ASCDS Version : 8.5.1.1

Observation 5589 - L2 Version 3  
Chandra X-Ray Center

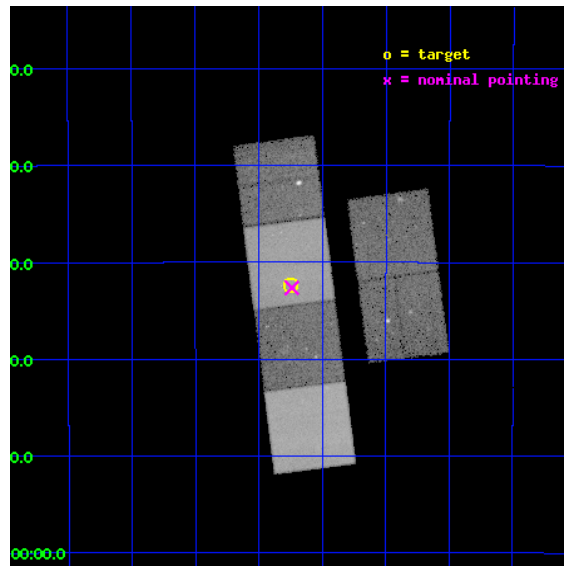
L2 Processing Date : Dec 27 2012

## Contents

<b>1</b>	<b>Front</b>	<b>2</b>
<b>2</b>	<b>OBI</b>	<b>3</b>
2.1	OBI . . . . .	3
2.1.1	Images . . . . .	3
2.1.2	Bias . . . . .	3
2.1.3	Parameters . . . . .	4
2.1.4	Events . . . . .	4
2.2	Compared Parameters . . . . .	5
2.3	Aspect . . . . .	6
2.4	Star Slots . . . . .	9
2.4.1	Slot 3 . . . . .	9
2.4.2	Slot 4 . . . . .	10
2.4.3	Slot 5 . . . . .	11
2.4.4	Slot 6 . . . . .	12
2.4.5	Slot 7 . . . . .	13
2.5	FID Slots . . . . .	14
2.5.1	Slot 0 . . . . .	14
2.5.2	Slot 1 . . . . .	15
2.5.3	Slot 2 . . . . .	16
<b>A</b>	<b>Summary</b>	<b>17</b>
A.1	Status . . . . .	17
A.2	Comments . . . . .	17

# 1 Front

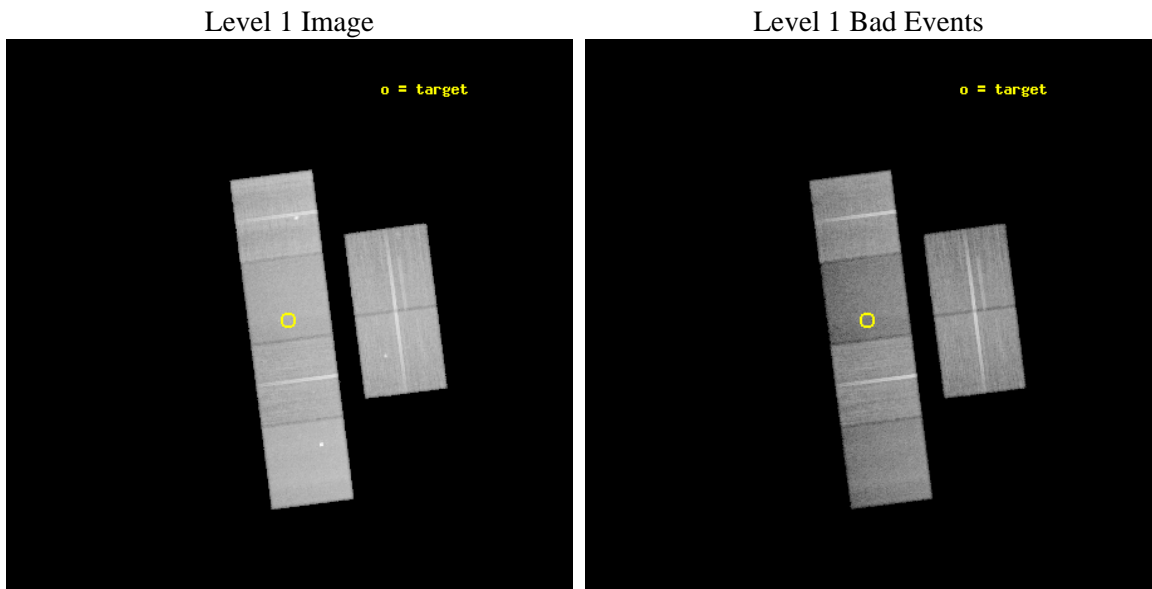
seq_num	500578	Sequence number
obs_id	5589	Observation id
title	A Day in the Life of a Short Gamma-Ray Burst Afterglow	Proposal ti
observer	Prof. David Burrows	Principal investigator
object	GRB050724	Source name
dtycycle	0	&#160
cycle	P	events from which exps? Prim/Second/Both
ra_targ	246.1875	Observer's specified target RA [deg]
dec_targ	-27.540333	Observer's specified target Dec [deg]
ra_nom	246.18504770997	Nominal RA [deg]
dec_nom	-27.544122807139	Nominal Dec [deg]
roll_nom	262.65915163422	Nominal Roll [deg]
revision	3	Processing version of data
ontime	45129.599831879	Sum of GTIs [s]
livetime	44558.141665025	Livetime [s]
ontime2	45119.876990706	Sum of GTIs [s]
ontime3	45126.358951211	Sum of GTIs [s]
ontime5	45129.599831879	Sum of GTIs [s]
ontime6	45123.117871374	Sum of GTIs [s]
ontime7	45129.599831879	Sum of GTIs [s]
ontime8	45129.599831879	Sum of GTIs [s]
l2events	362151	Number of level 2 events



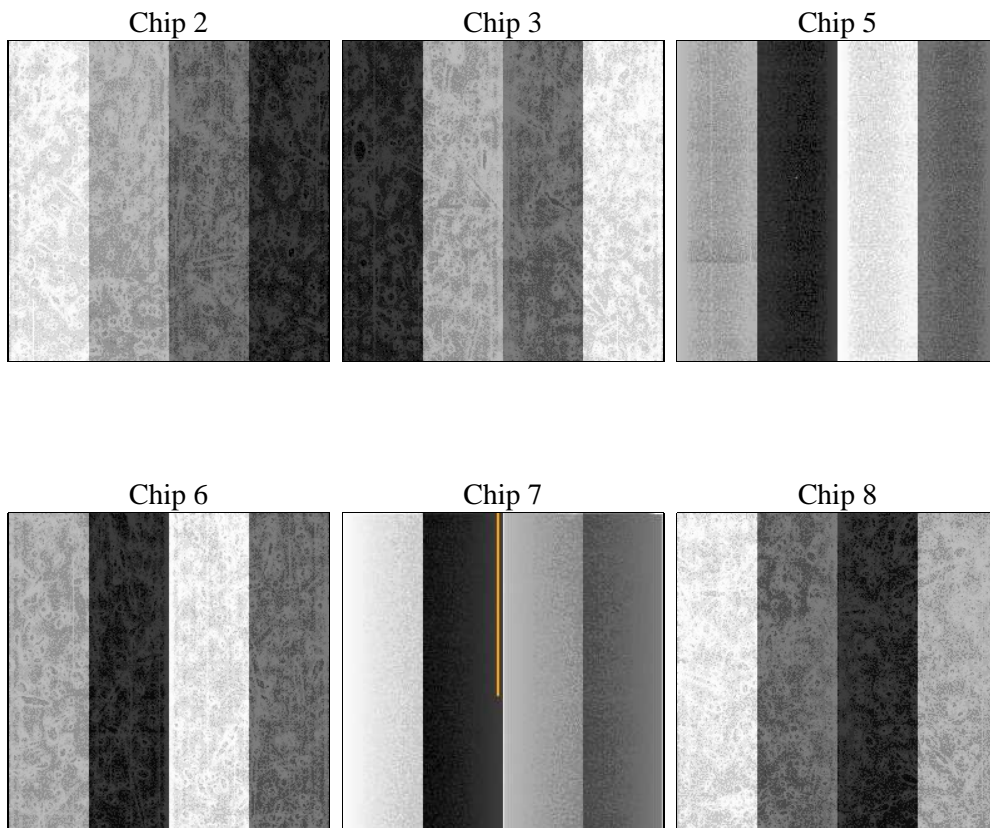
## 2 OBI

### 2.1 OBI

#### 2.1.1 Images



#### 2.1.2 Bias



### 2.1.3 Parameters

obi_num	0	Obi number	sched_exp_time	45000.000000	[s] Scheduled observation exposure time
ascdsver	8.5.1.1	Processing system revision	ontime	45129.599831879	Sum of GTIs [s]
caldbver	4.5.5	&#160	ontime2	45119.876990706	Sum of GTIs [s]
date	2012-12-27T06:21:13	Date and time of file creation	ontime3	45126.358951211	Sum of GTIs [s]
revision	3	Processing version of data	ontime5	45129.599831879	Sum of GTIs [s]
			ontime6	45123.117871374	Sum of GTIs [s]
			ontime7	45129.599831879	Sum of GTIs [s]
			ontime8	45129.599831879	Sum of GTIs [s]
			l1events	1724655	Number of level 1 events

### 2.1.4 Events

	ccd 2	ccd 3	ccd 5	ccd 6	ccd 7	ccd 8		ccd 2	ccd 3	ccd 5	ccd 6	ccd 7	ccd 8
level 1 events	288170	256227	323203	273207	255145	328703	grade 0 events	10816	9809	16138	11090	11653	20321
rejected events	261780	231585	164163	245364	137254	254868		3%	3%	4%	4%	4%	6%
rejected %	90%	90%	50%	89%	53%	77%	grade 1 events	144	161	243	136	230	214
								0%	0%	0%	0%	0%	0%
							grade 2 events	6321	5282	46650	6132	23952	18374
								2%	2%	14%	2%	9%	5%
							grade 3 events	2841	2909	7104	3139	11414	8691
								0%	1%	2%	1%	4%	2%
							grade 4 events	2818	2772	6946	2986	11240	7936
								0%	1%	2%	1%	4%	2%
							grade 5 events	7693	9007	28048	9439	28492	14518
								2%	3%	8%	3%	11%	4%
							grade 6 events	4533	4739	88130	5496	63945	21136
								1%	1%	27%	2%	25%	6%
							grade 7 events	253004	221548	129944	234789	104219	237513
								87%	86%	40%	85%	40%	72%

## 2.2 Compared Parameters

Parameter	Planned	Actual	Parameter	Planned	Actual
Instrument	ACIS	ACIS	Obspar format version number	7	7
Detector	ACIS-235678	ACIS-235678	Obspar file type	PREDICTED	ACTUAL
Grating	NONE	NONE	Obspar update status	NONE	UPDATED
Data mode	VFAINT	VFAINT	Number of optional ACIS chips dropped	0	0
Observation mode	POINTING	POINTING	On-chip summing requested	N	N
[deg] Pointing RA	246.172834	246.1850477099699	Subarray requested	NONE	NONE
[deg] Pointing Dec	-27.519119	-27.54412280713861	Alternating exposures requested	N	N
[deg] Pointing Roll	262.496878	262.6591516342182	[s] Primary exposure time	0.000000	3.2
[mm] SIM focus pos	-0.684267	-0.6828225247311905			
[mm] SIM defocus	0	0.001444936568705701			
[mm] SIM translation stage pos	-190.132523	-190.1400660498719			
[mm] SIM translation stage offset	0	0.00754346686406393			
[s] Observation start time (MET)	240442403.184000	240440380.22447			
Observation start date	2005-08-14T21:32:19	2005-08-14T20:59:40			
[s] Observation end time (MET)	240487403.184000	240488132.92666			
Observation end date	2005-08-15T10:02:19	2005-08-15T10:15:32			
Read mode	TIMED	TIMED			

## 2.3 Aspect

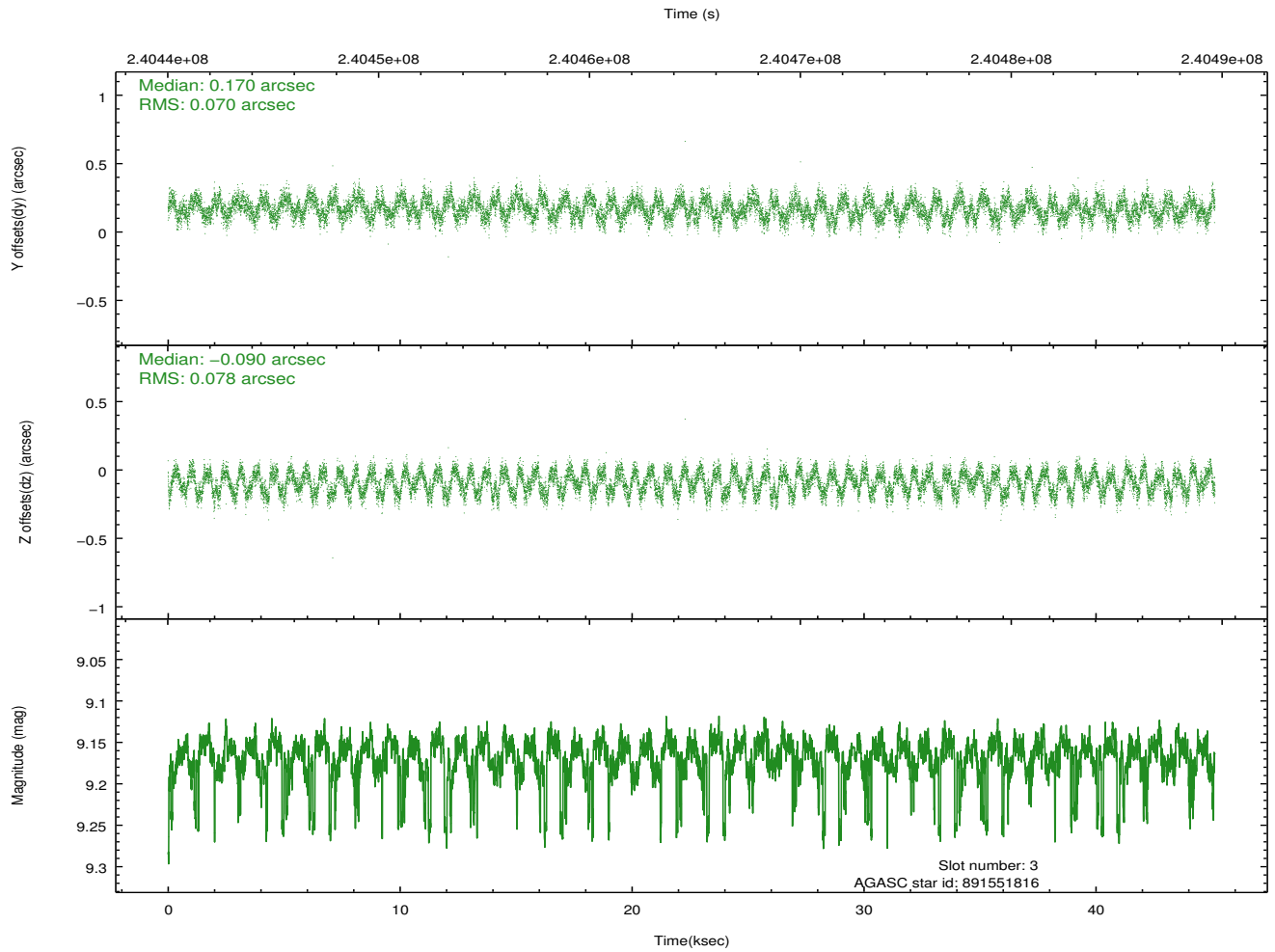
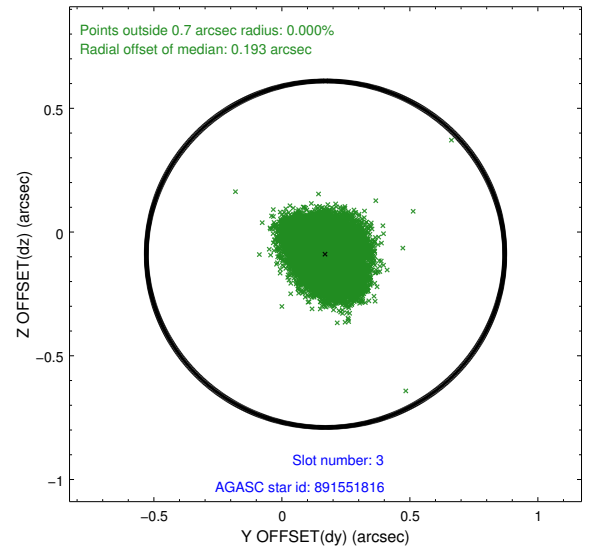
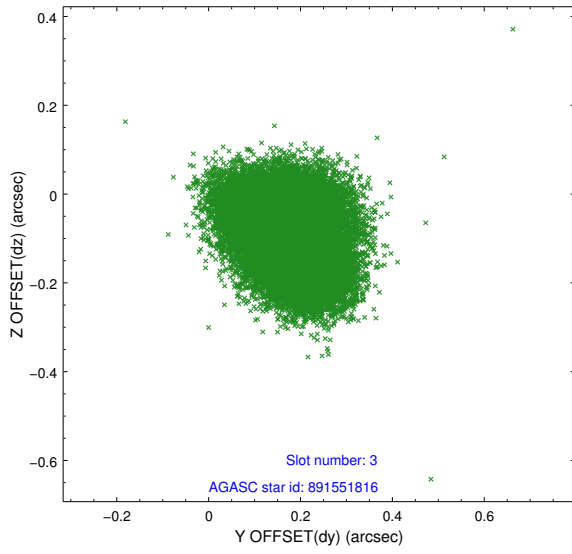


### Slot Statistics

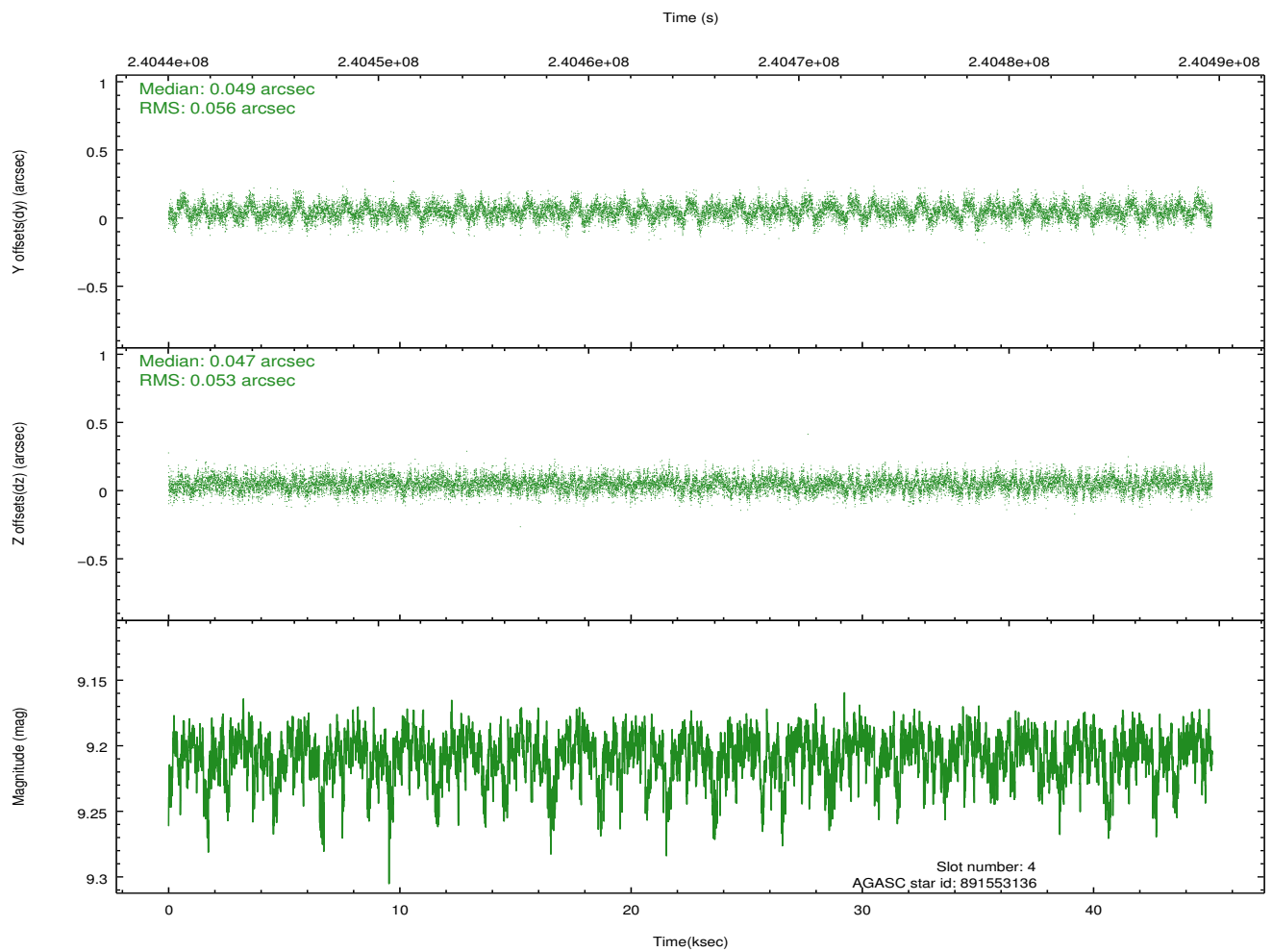
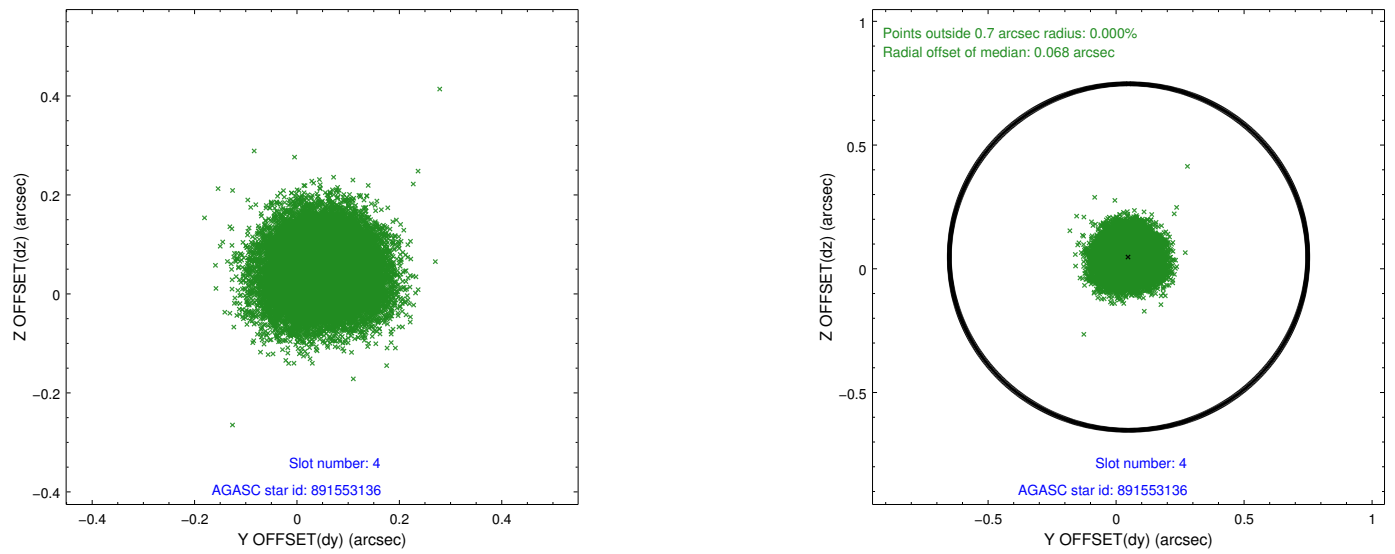
slot	status	id	mag	n_pts	med_dy	med_dz	dr1	dr2	ra	dec	mean_y	mean_z
0	FID	ACIS-S-2	7.10	11009	-0.042	-0.019	0.012	0.021	0.000000	0.000000	-760.49	-1732.43
1	FID	ACIS-S-4	7.21	11007	0.103	0.025	0.018	0.039	0.000000	0.000000	2152.90	176.15
2	FID	ACIS-S-5	7.23	11008	-0.090	0.002	0.021	0.044	0.000000	0.000000	-1813.43	169.72
3	GUIDE	891551816	9.17	21949	0.170	-0.090	0.115	0.170	246.153106	-27.968763	1613.44	149.16
4	GUIDE	891553136	9.21	21995	0.049	0.047	0.083	0.133	246.454955	-27.819225	955.30	1031.54
5	GUIDE	891560800	7.92	22011	-0.031	-0.103	0.068	0.110	246.296971	-27.667531	478.62	462.01
6	GUIDE	891561680	7.79	22016	-0.106	0.031	0.096	0.141	246.126760	-27.151147	-1293.76	-319.45
7	GUIDE	891552176	8.99	22004	-0.076	0.127	0.088	0.140	246.804004	-27.854109	938.28	2150.14

## 2.4 Star Slots

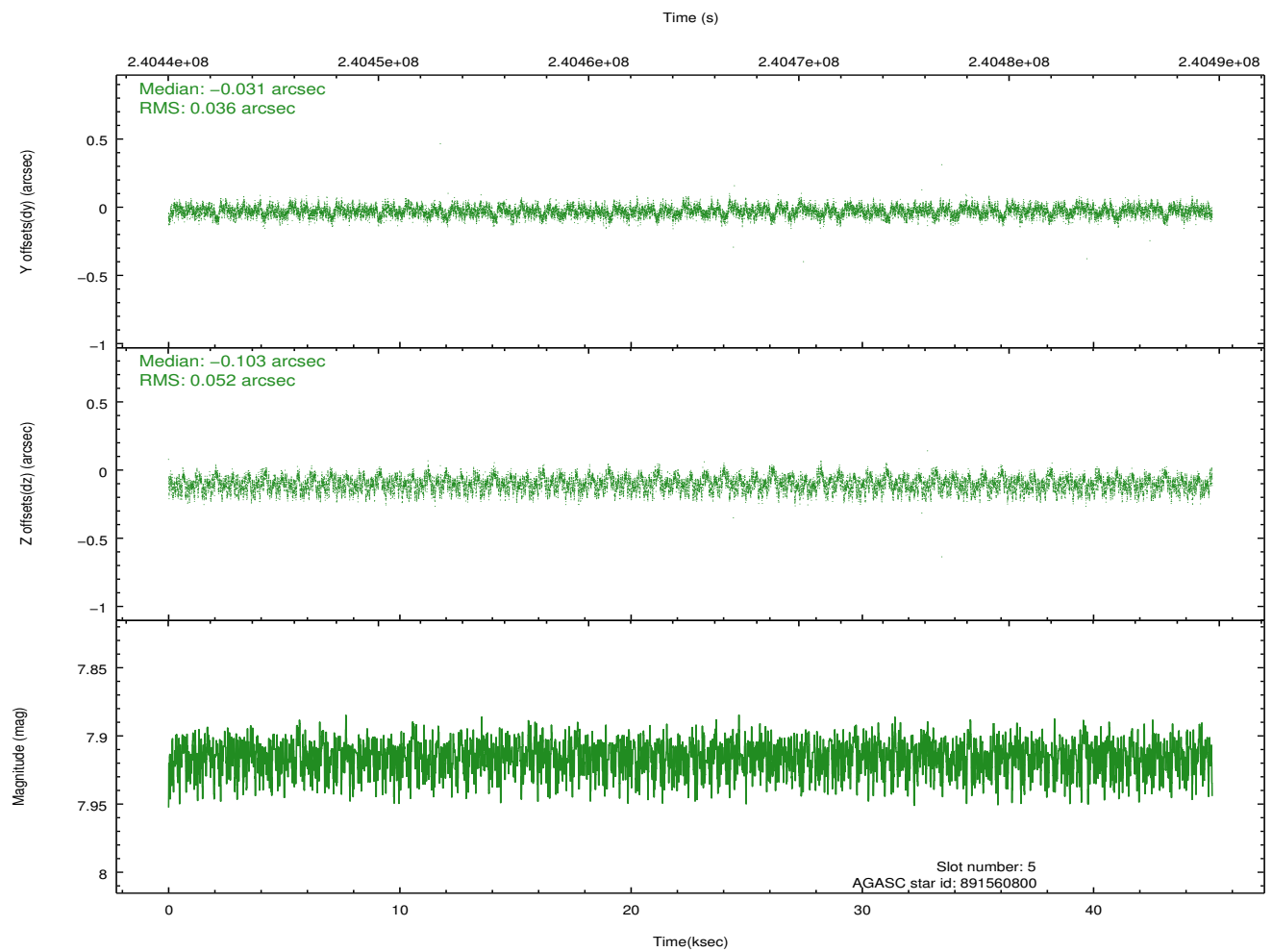
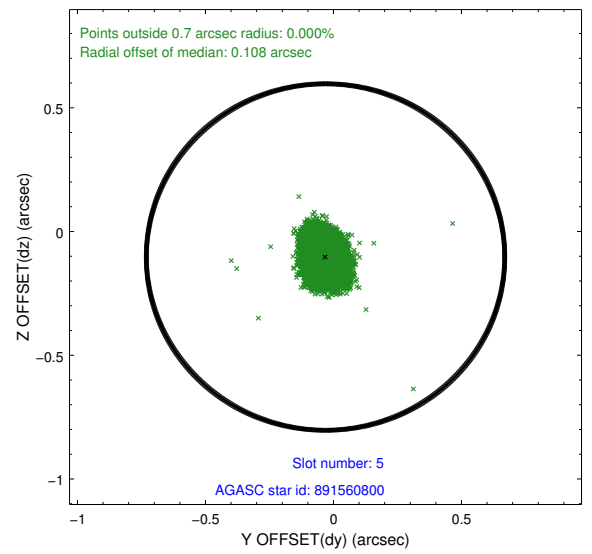
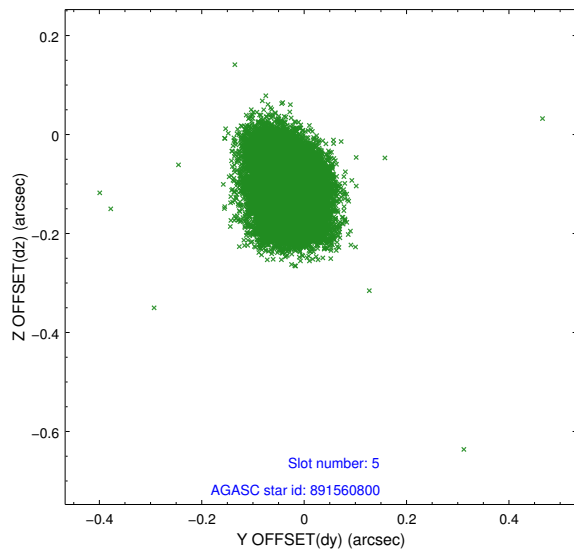
### 2.4.1 Slot 3



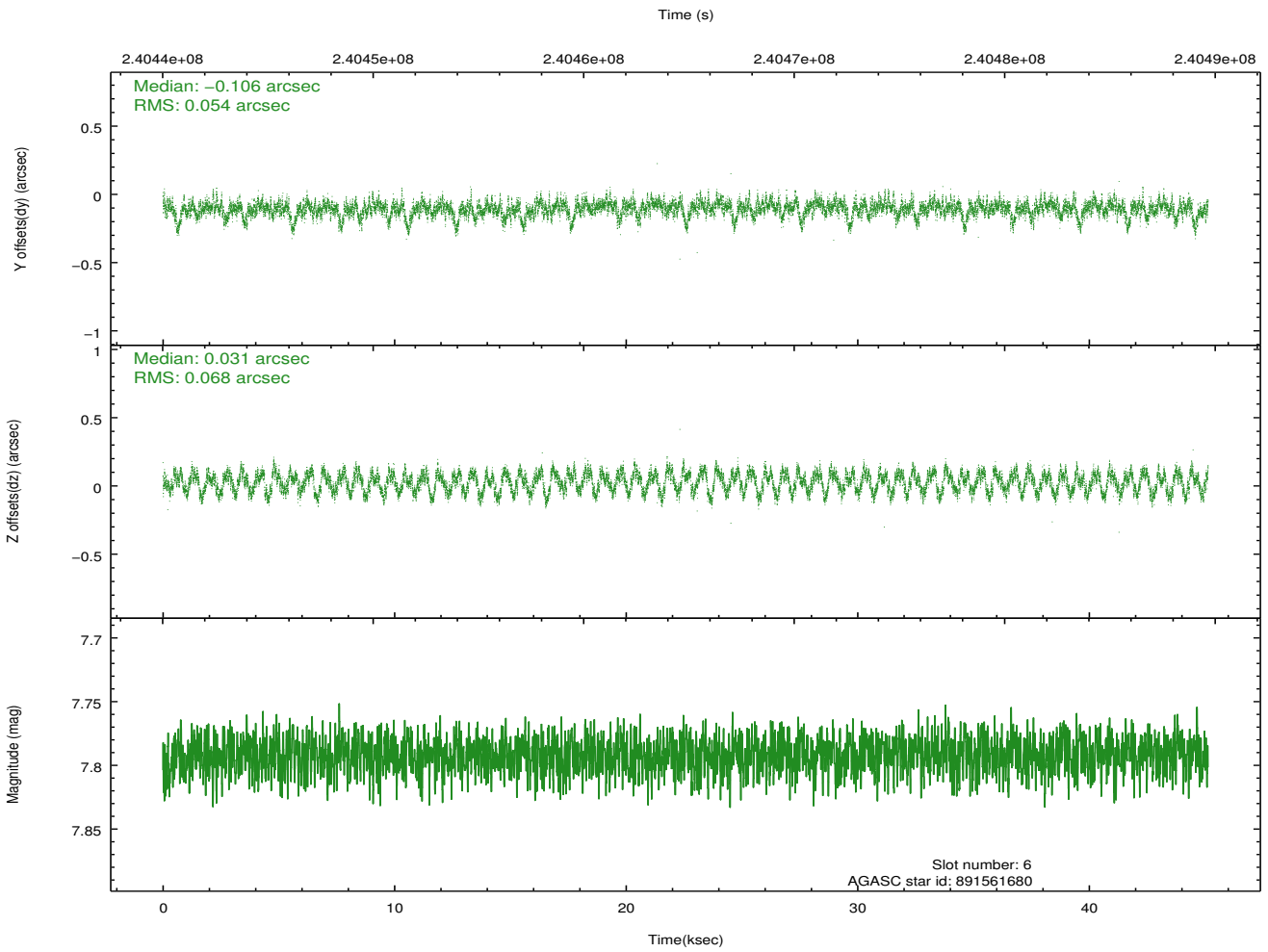
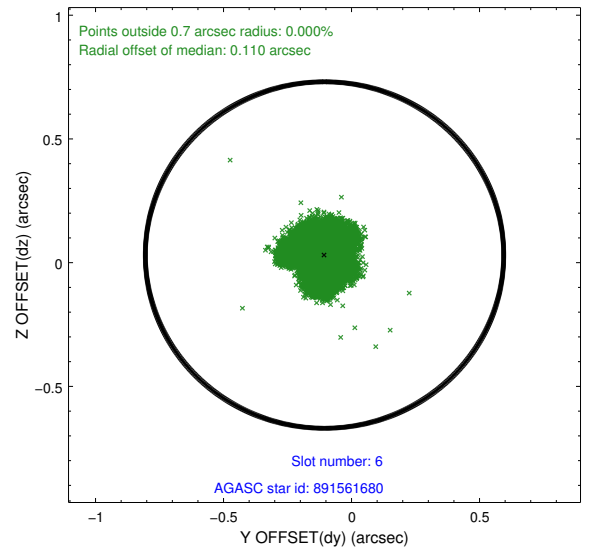
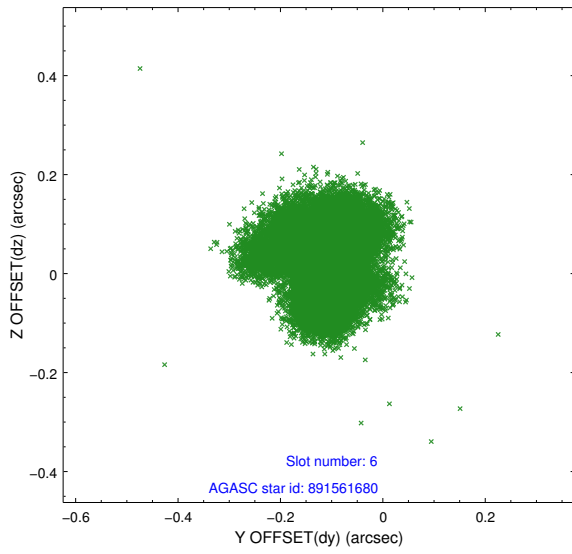
## 2.4.2 Slot 4



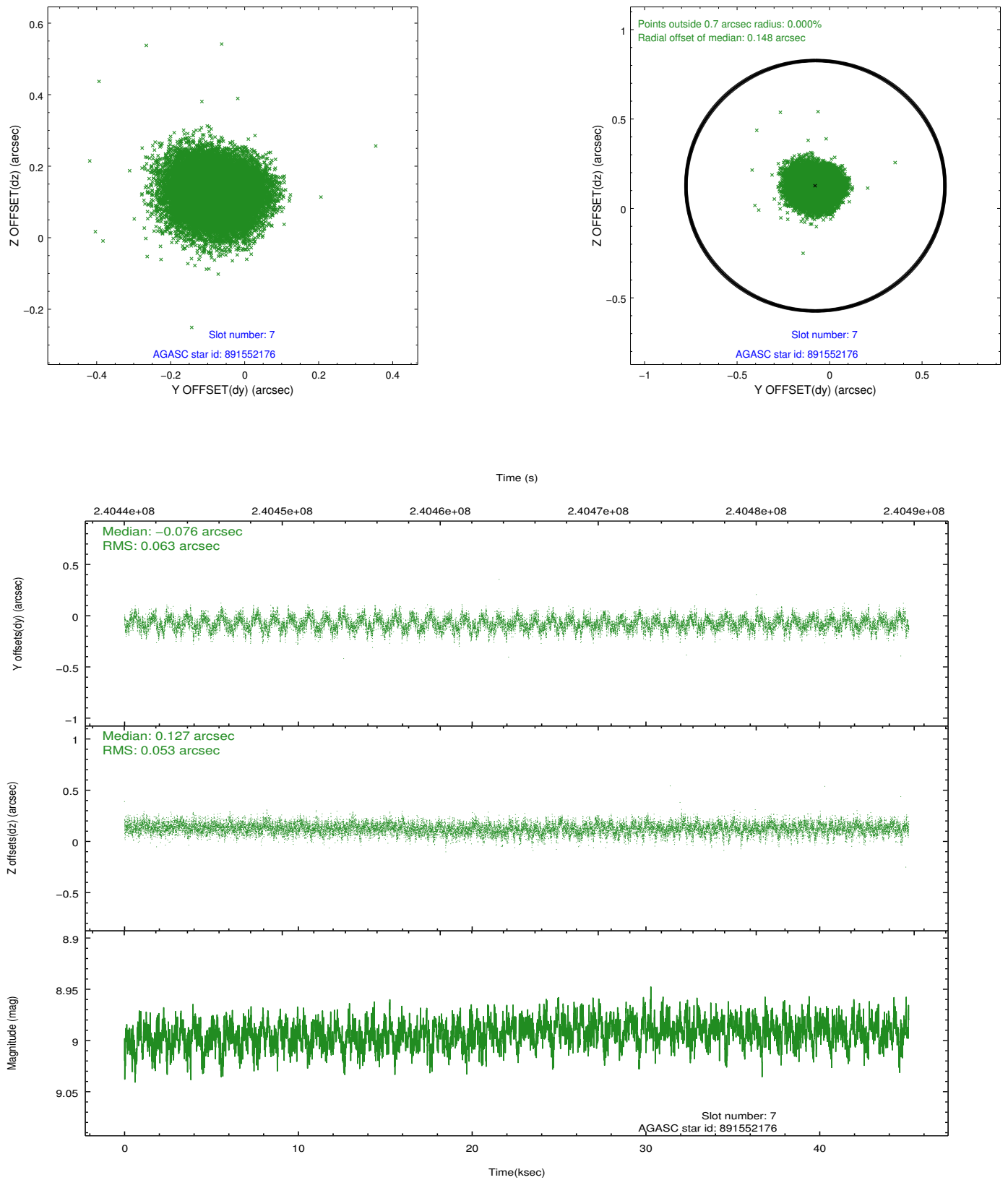
### 2.4.3 Slot 5



## 2.4.4 Slot 6

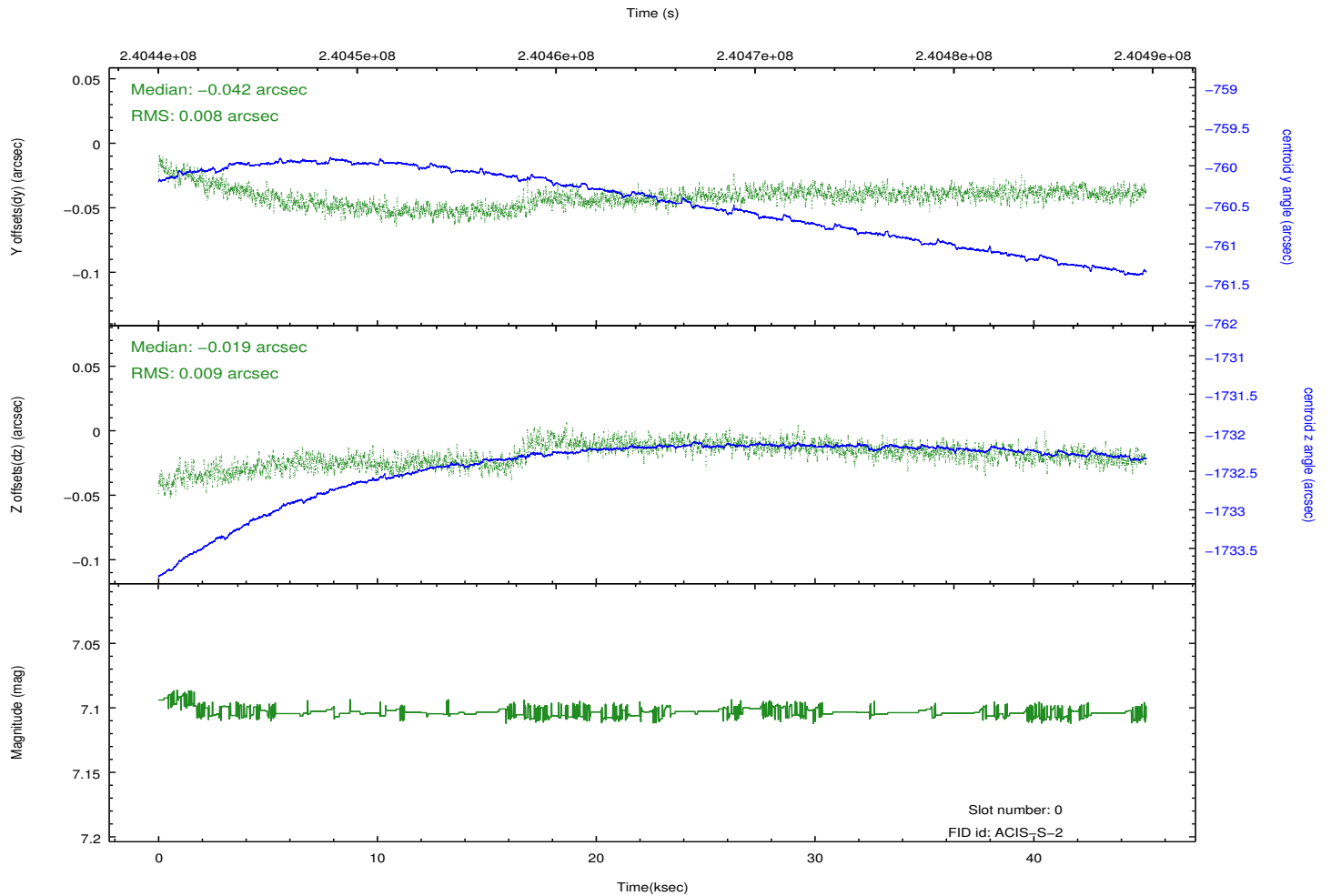
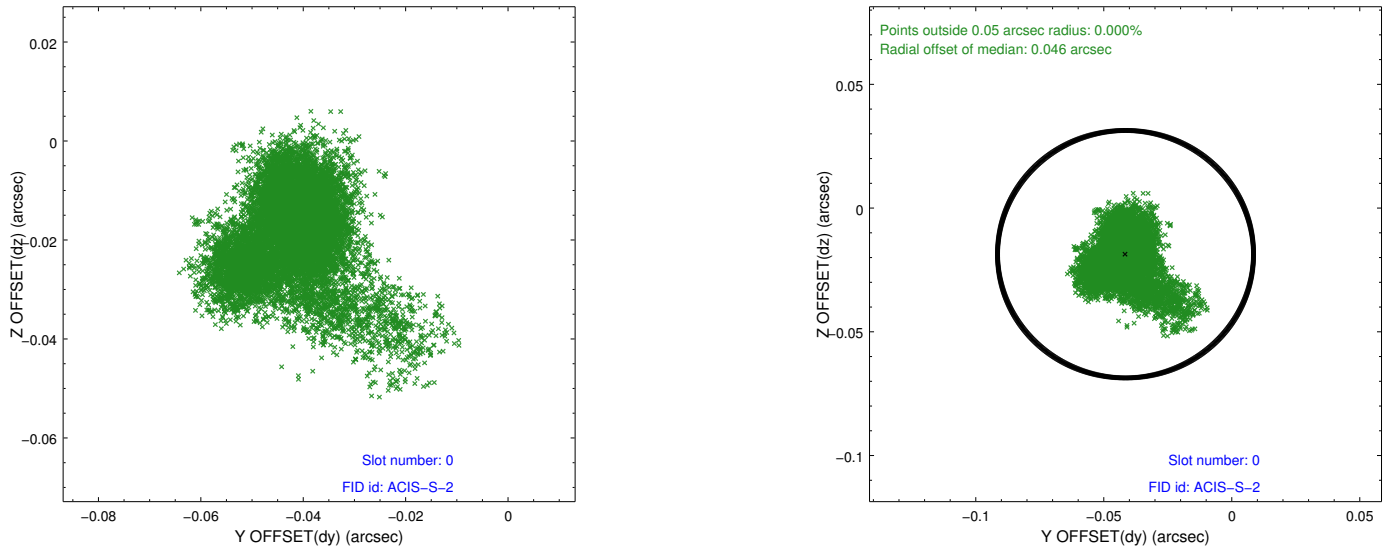


## 2.4.5 Slot 7

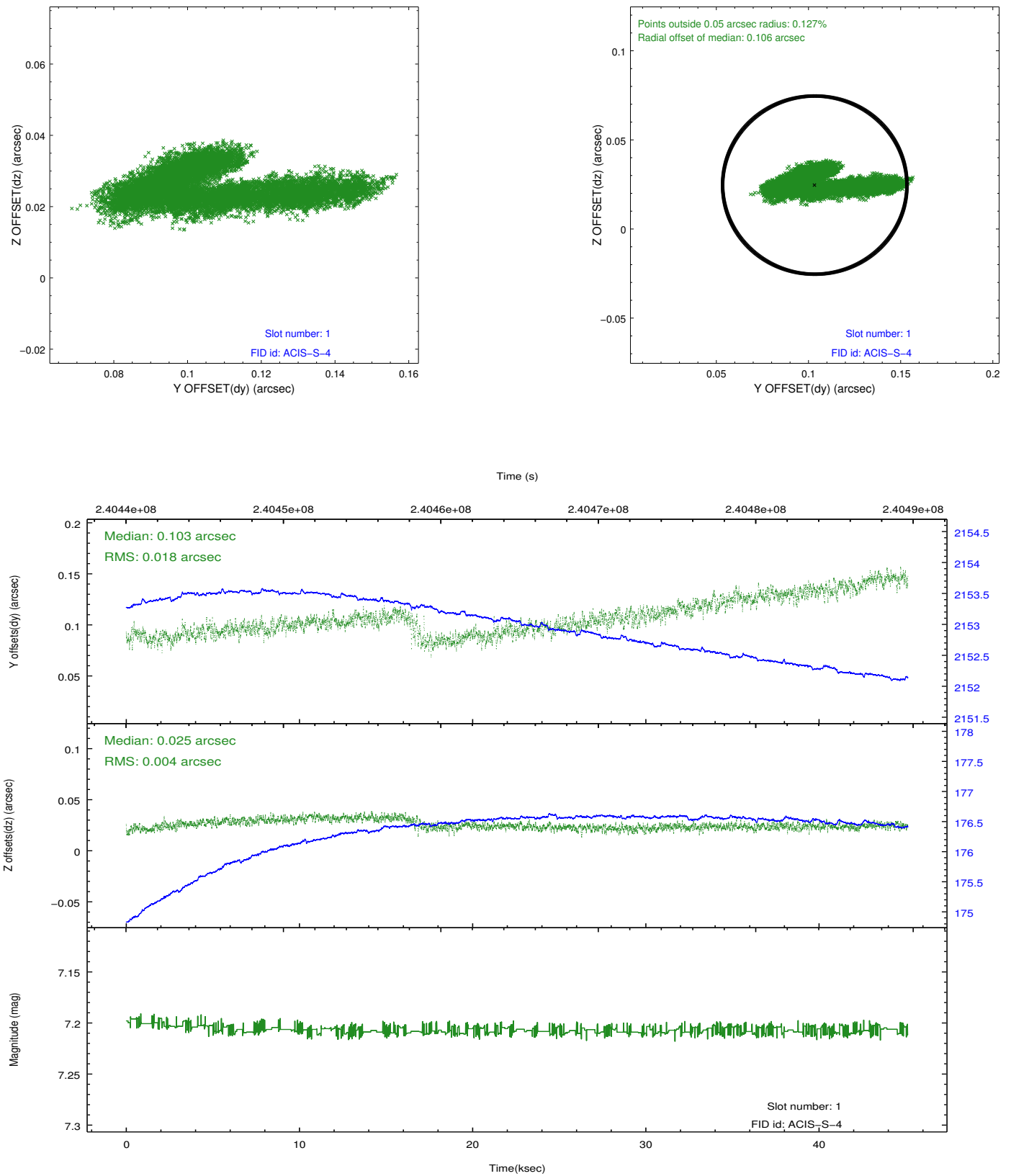


## 2.5 FID Slots

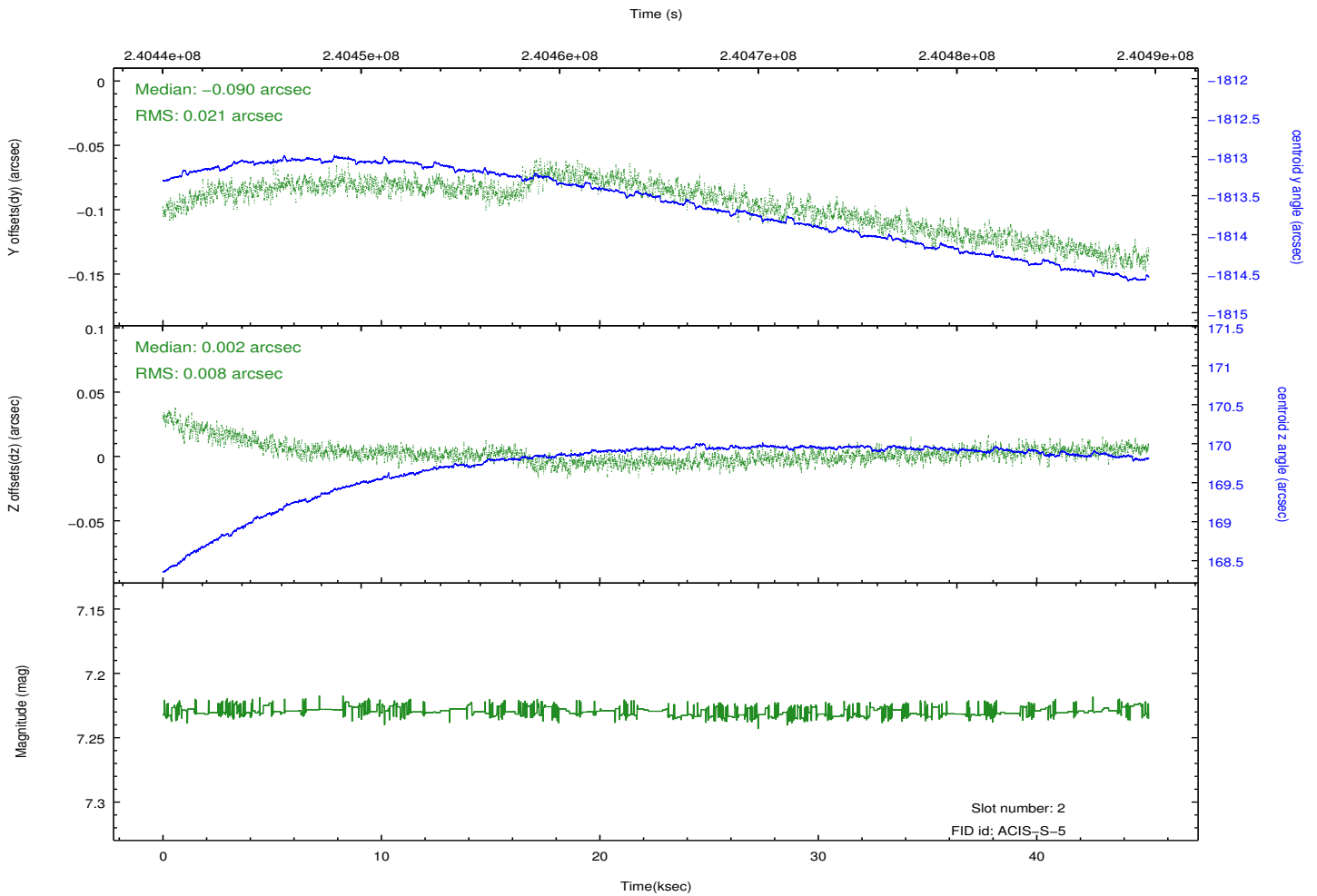
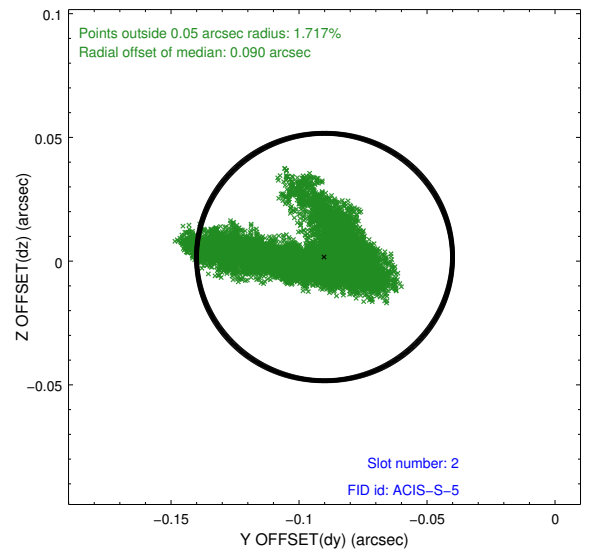
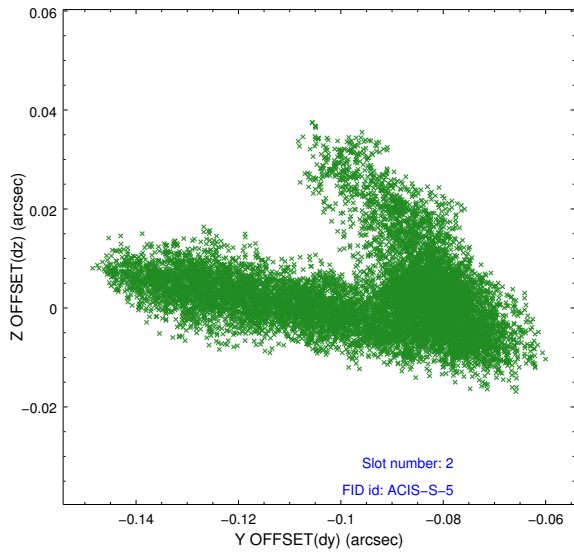
### 2.5.1 Slot 0



## 2.5.2 Slot 1



### 2.5.3 Slot 2



# A Summary

## A.1 Status

V&V Scientist	Jen Lauer
V&V Date (YYYY-MM-DD)	2013.01.24
V&V Edition	1
V&V Disposition and Status	OK
V&V Charge Time	45.1296

## A.2 Comments

Followup observation to T00; does not meet window constraint of 12-16 days after first observation. This observation is 19 days after the first observation.