

V&V Reference Report

L2 ASCDS Version : 8.5.1.1

Observation 5709 - L2 Version 3
Chandra X-Ray Center

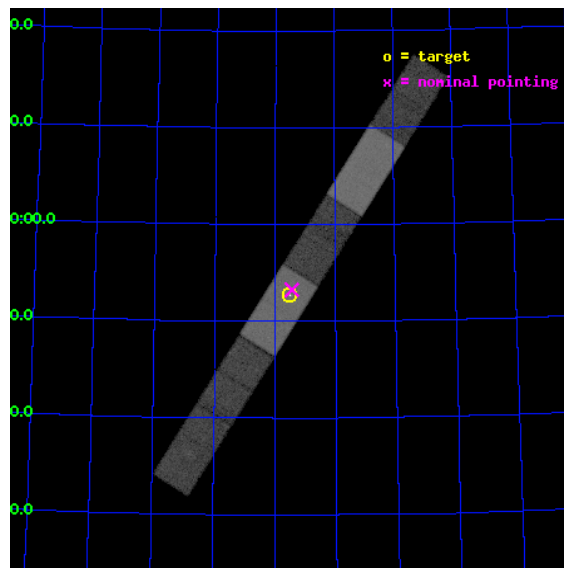
L2 Processing Date : Dec 23 2012

Contents

1	Front	2
2	OBI	3
2.1	OBI	3
2.1.1	Images	3
2.1.2	Bias	3
2.1.3	Parameters	4
2.1.4	Events	4
2.2	Compared Parameters	5
2.3	Aspect	6
2.4	Star Slots	9
2.4.1	Slot 3	9
2.4.2	Slot 4	10
2.4.3	Slot 5	11
2.4.4	Slot 6	12
2.4.5	Slot 7	13
2.5	FID Slots	14
2.5.1	Slot 0	14
2.5.2	Slot 1	15
2.5.3	Slot 2	16
A	Summary	17
A.1	Status	17
A.2	Comments	17

1 Front

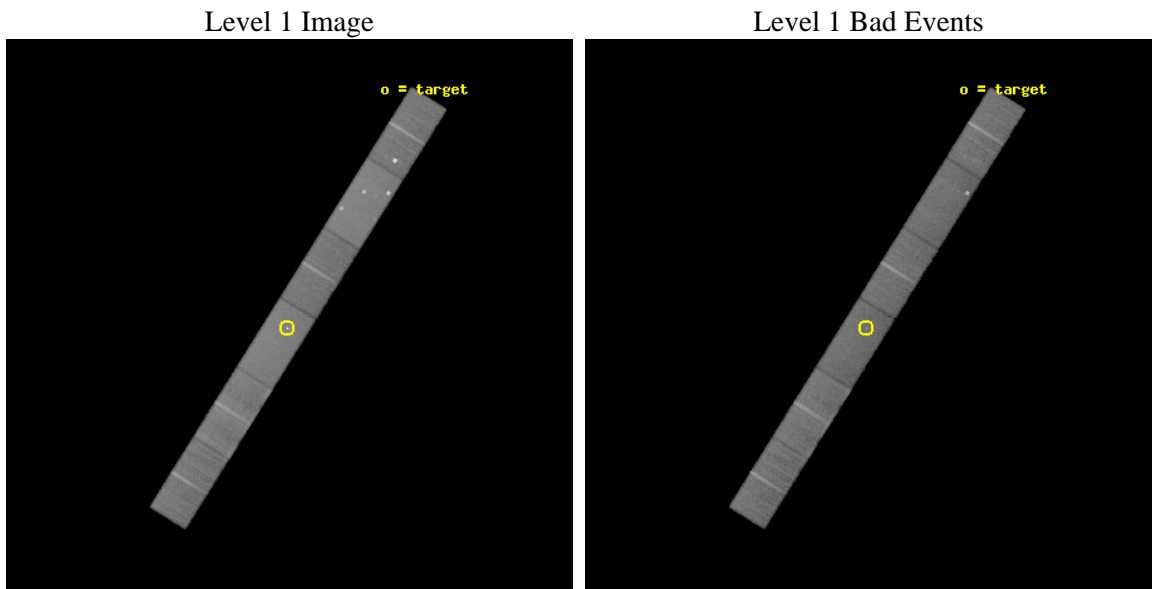
seq_num	701131	Sequence number
obs_id	5709	Observation id
title	X-ray from misaligned FRI jets: IC/CMB emission from a fast spine?	
observer	Dr. Rita Sambruna	Principal investigator
object	2007+777	Source name
dtcycle	0	
cycle	P	events from which exps? Prim/Second/Both
ra_targ	301.37875	Observer's specified target RA [deg]
dec_targ	77.878611	Observer's specified target Dec [deg]
ra_nom	301.36143080474	Nominal RA [deg]
dec_nom	77.88757758659	Nominal Dec [deg]
roll_nom	122.16899865777	Nominal Roll [deg]
revision	3	Processing version of data
ontime	36867.600244164	Sum of GTIs [s]
livetime	36045.756984909	Livetime [s]
ontime4	36867.600244164	Sum of GTIs [s]
ontime5	36867.600244164	Sum of GTIs [s]
ontime6	36867.600244164	Sum of GTIs [s]
ontime7	36867.600244164	Sum of GTIs [s]
ontime8	36867.600244164	Sum of GTIs [s]
ontime9	36867.600244164	Sum of GTIs [s]
l2events	254131	Number of level 2 events



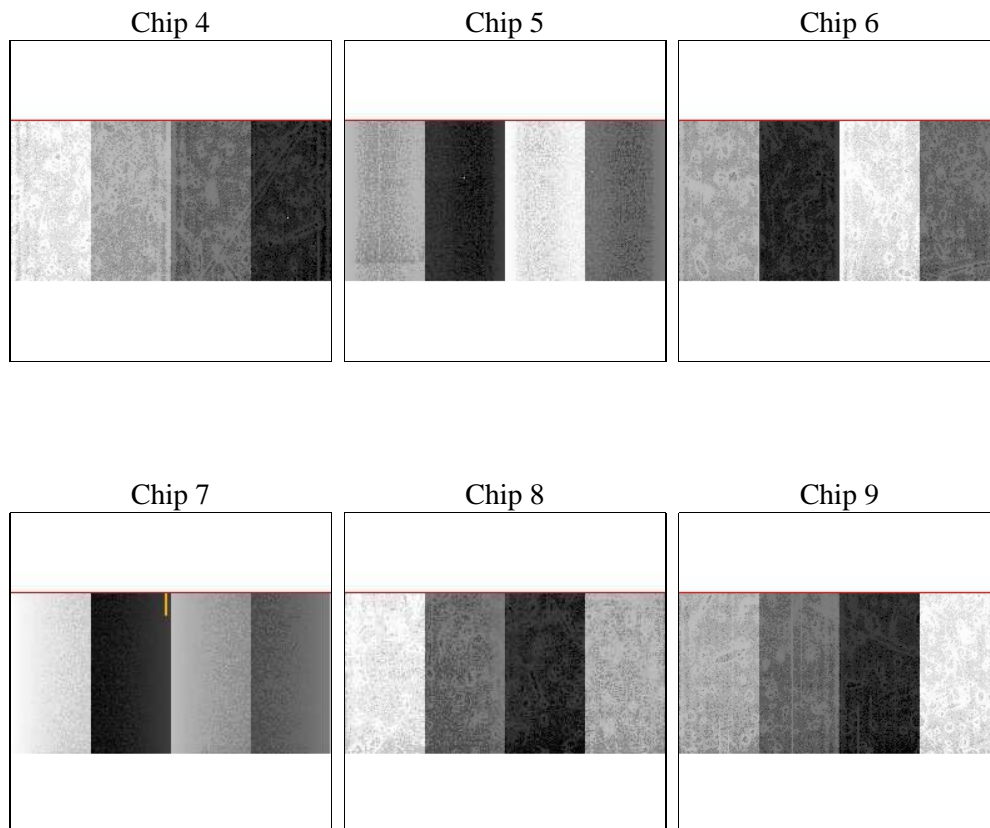
2 OBI

2.1 OBI

2.1.1 Images



2.1.2 Bias



2.1.3 Parameters

obi_num	0	Obi number	sched_exp_time	36685.786000	[s] Scheduled observation exposure time
ascdsver	8.5.1.1	Processing system revision	ontime	36867.600244164	Sum of GTIs [s]
caldsver	4.5.5	 	ontime4	36867.600244164	Sum of GTIs [s]
date	2012-12-23T19:22:54	Date and time of file creation	ontime5	36867.600244164	Sum of GTIs [s]
revision	3	Processing version of data	ontime6	36867.600244164	Sum of GTIs [s]
			ontime7	36867.600244164	Sum of GTIs [s]
			ontime8	36867.600244164	Sum of GTIs [s]
			ontime9	36867.600244164	Sum of GTIs [s]
			l1events	1099496	Number of level 1 events

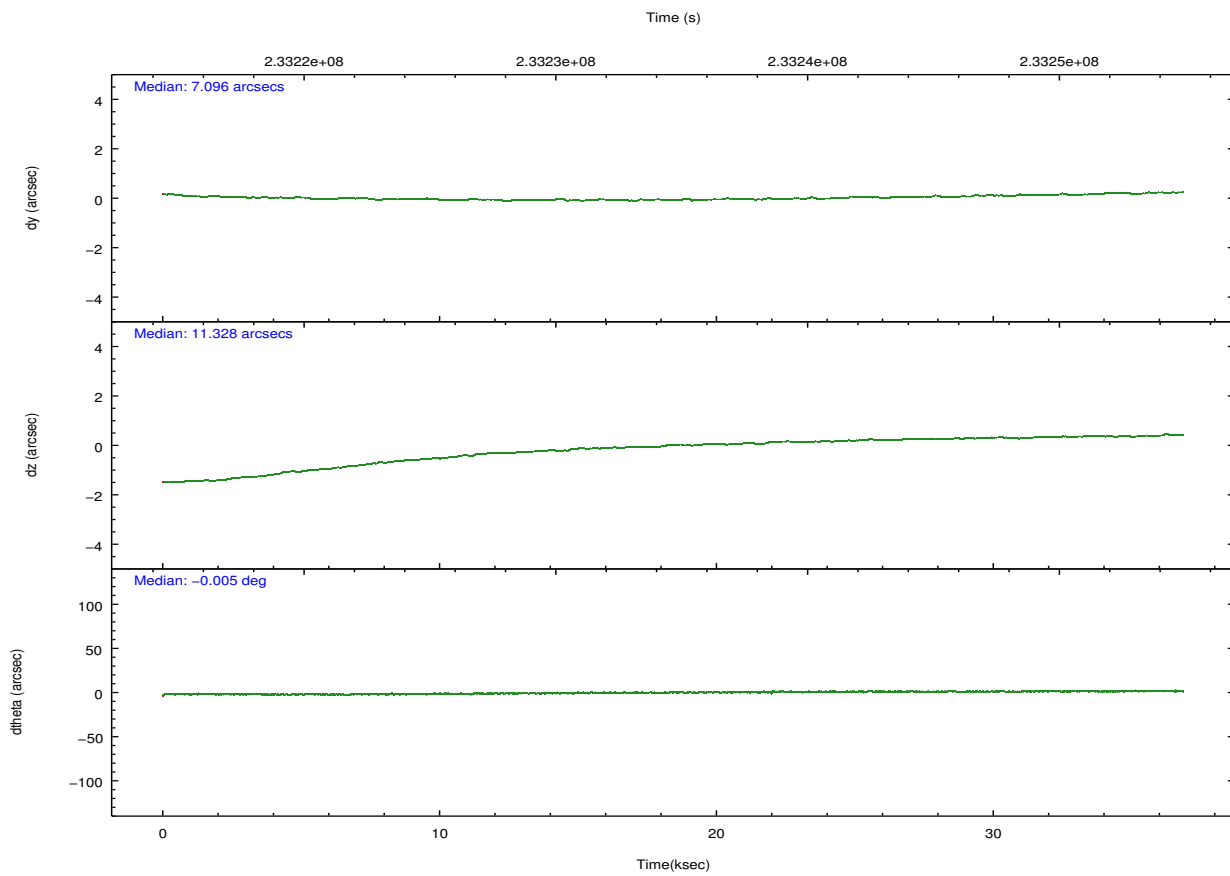
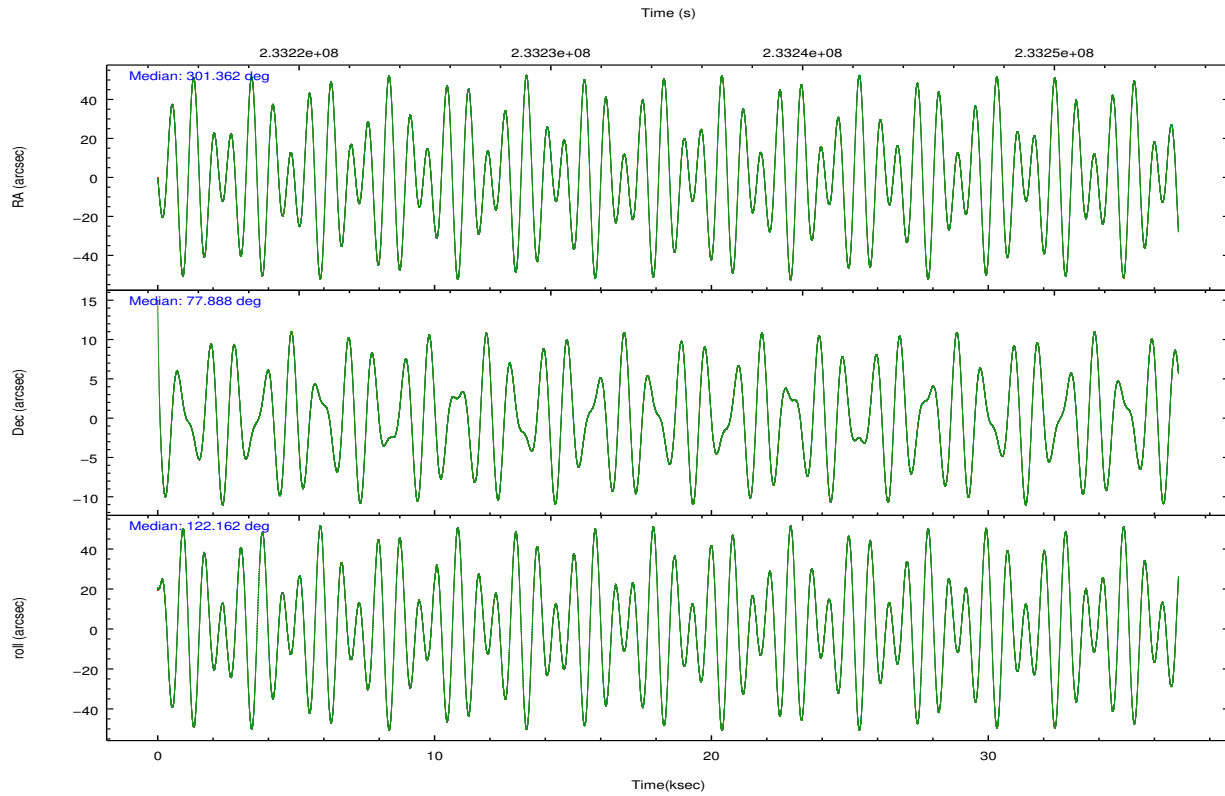
2.1.4 Events

	ccd 4	ccd 5	ccd 6	ccd 7	ccd 8	ccd 9		ccd 4	ccd 5	ccd 6	ccd 7	ccd 8	ccd 9
level 1 events	180934	226819	148719	203079	191235	148710	grade 0 events	29798	20626	8705	10428	14426	9774
rejected events	140232	117979	128694	111380	148566	127859		16%	9%	5%	5%	7%	6%
rejected %	77%	52%	86%	54%	77%	85%	grade 1 events	188	4034	35	300	110	76
								0%	1%	0%	0%	0%	0%
							grade 2 events	3924	30098	3827	19307	8959	3672
								2%	13%	2%	9%	4%	2%
							grade 3 events	2256	4853	2119	8905	4484	2170
								1%	2%	1%	4%	2%	1%
							grade 4 events	2242	4682	2081	8785	4155	2105
								1%	2%	1%	4%	2%	1%
							grade 5 events	6213	16344	6491	18527	8678	6917
								3%	7%	4%	9%	4%	4%
							grade 6 events	3050	50462	3540	45440	11211	3407
								1%	22%	2%	22%	5%	2%
							grade 7 events	133263	95720	121921	91387	139212	120589
								73%	42%	81%	45%	72%	81%

2.2 Compared Parameters

Parameter	Planned	Actual	Parameter	Planned	Actual
Instrument	ACIS	ACIS	Obspar format version number	7	7
Detector	ACIS-456789	ACIS-456789	Obspar file type	PREDICTED	ACTUAL
Grating	NONE	NONE	Obspar update status	NONE	UPDATED
Data mode	FAINT	FAINT	Number of optional ACIS chips dropped	0	0
Observation mode	POINTING	POINTING	On-chip summing requested	N	N
[deg] Pointing RA	301.476891	301.3614308047376	Subarray requested	CUSTOM	1/2
[deg] Pointing Dec	77.875159	77.88757758659024	Subarray start row	257	257
[deg] Pointing Roll	121.899482	122.1689986577732	Subarray row count	512	512
[mm] SIM focus pos	-0.684267	-0.6828225247311905	Alternating exposures requested	N	N
[mm] SIM defocus	0	0.001444936568705701	[s] Primary exposure time	0.000000	1.8
[mm] SIM translation stage pos	-190.132523	-190.1400660498719			
[mm] SIM translation stage offset	0	0.00754346686406393			
[s] Observation start time (MET)	233216409.184000	233215294.29416			
Observation start date	2005-05-23T06:19:05	2005-05-23T06:01:34			
[s] Observation end time (MET)	233253095.184000	233253318.2084			
Observation end date	2005-05-23T16:30:31	2005-05-23T16:35:18			
Read mode	TIMED	TIMED			

2.3 Aspect

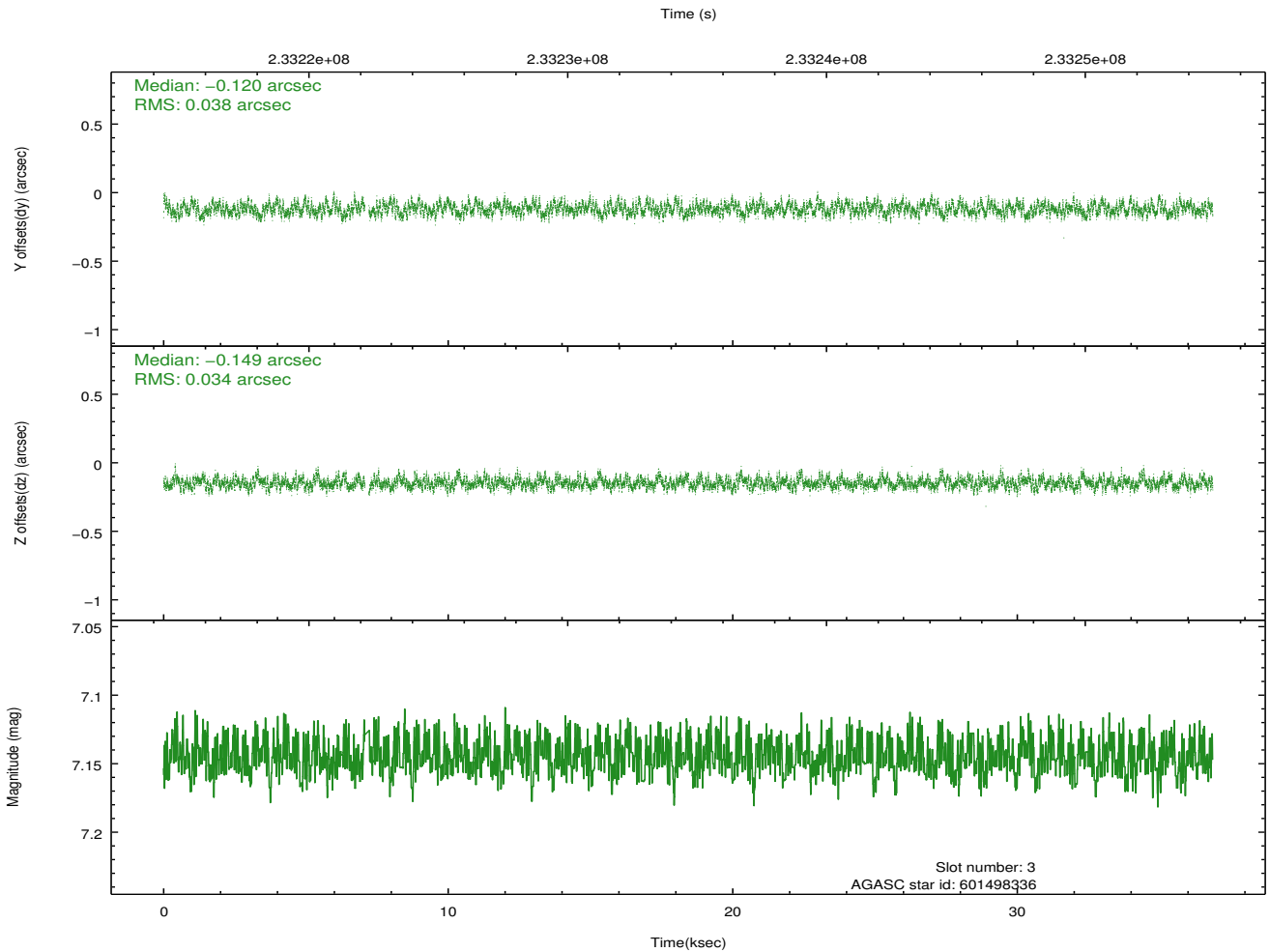
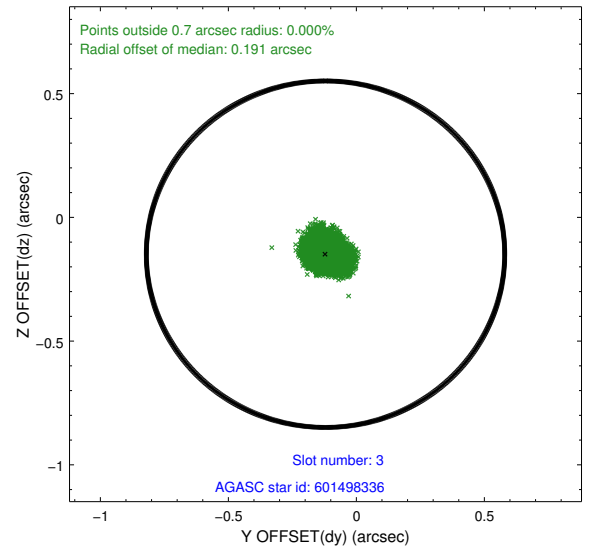
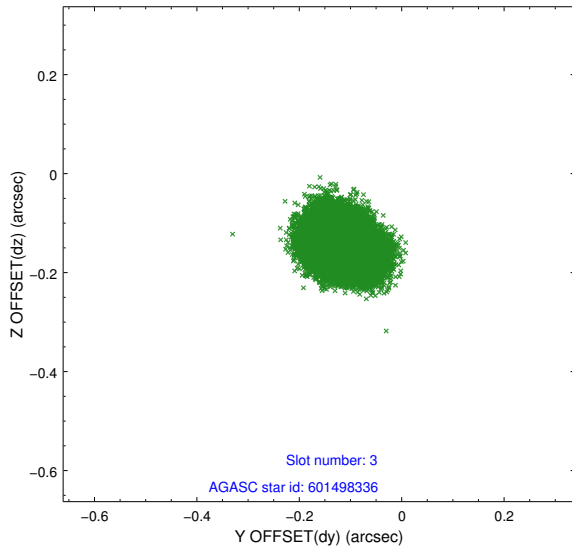


Slot Statistics

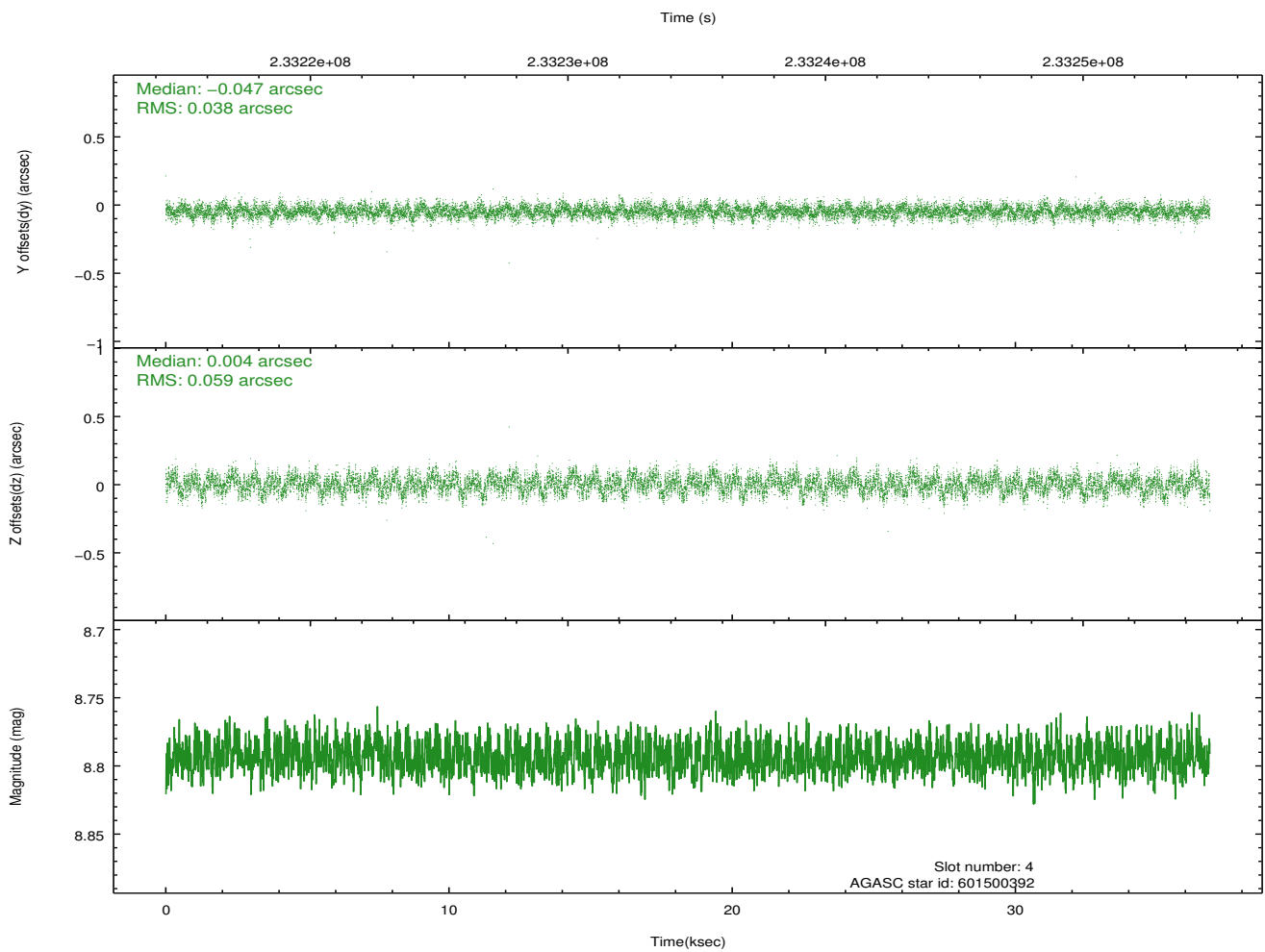
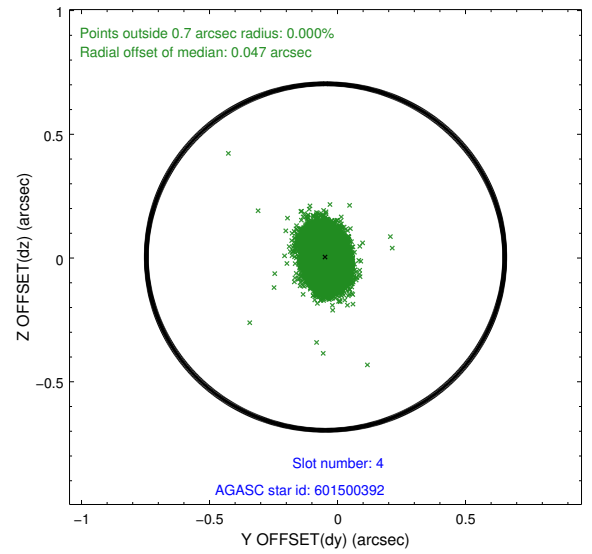
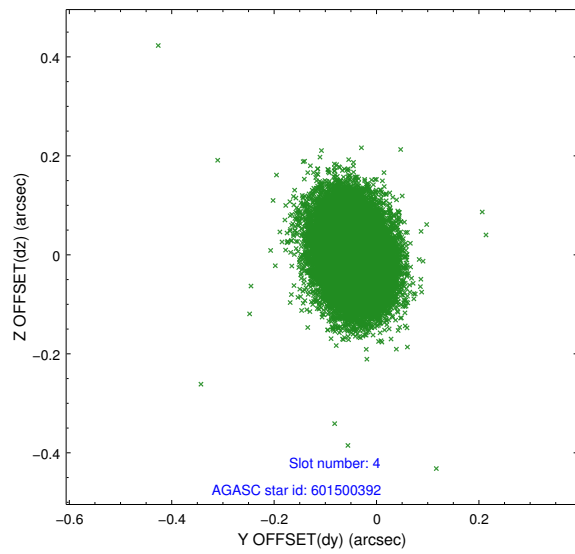
slot	status	id	mag	n_pts	med_dy	med_dz	dr1	dr2	ra	dec	mean_y	mean_z
0	FID	ACIS-S-2	7.10	8992	-0.048	-0.026	0.013	0.020	0.000000	0.000000	-759.90	-1732.43
1	FID	ACIS-S-4	7.20	8993	0.094	0.029	0.012	0.023	0.000000	0.000000	2153.48	176.12
2	FID	ACIS-S-5	7.23	8993	-0.079	0.004	0.009	0.015	0.000000	0.000000	-1812.76	169.74
3	GUIDE	601498336	7.15	17916	-0.120	-0.149	0.055	0.087	301.598476	77.537803	-1080.86	561.38
4	GUIDE	601500392	8.79	17985	-0.047	0.004	0.074	0.122	303.578266	78.185280	153.47	-1919.18
5	GUIDE	601514248	7.18	17987	0.022	0.062	0.058	0.089	301.995239	77.824437	-361.40	-238.56
6	GUIDE	601363376	8.34	17976	0.127	0.115	0.058	0.091	297.258681	77.993065	2124.91	2395.85
7	GUIDE	601371520	9.14	17935	0.016	-0.034	0.074	0.121	299.561030	78.034724	1263.26	898.23

2.4 Star Slots

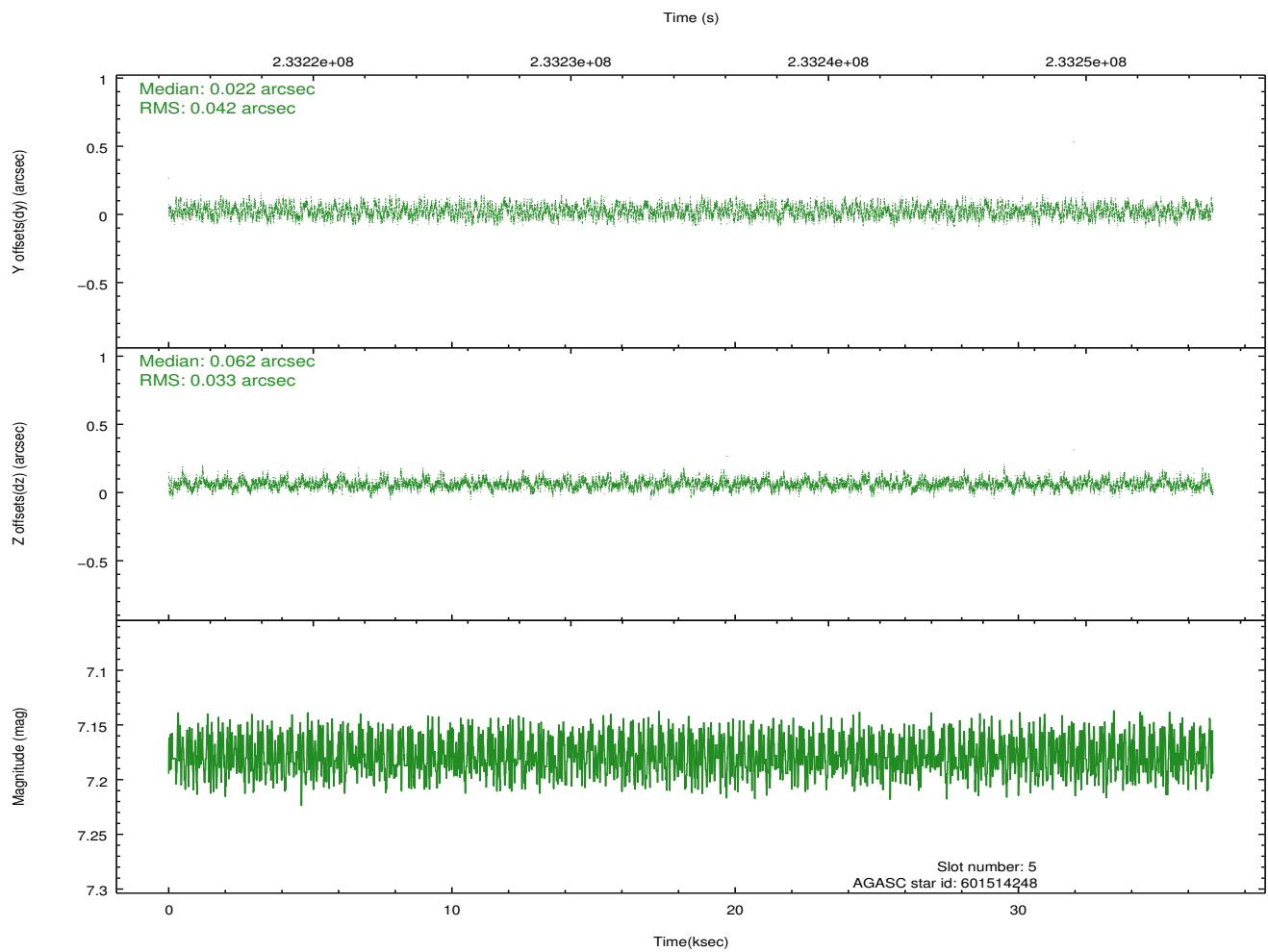
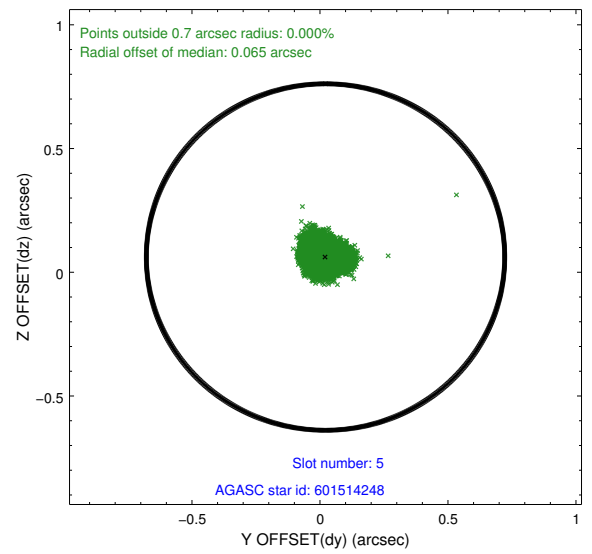
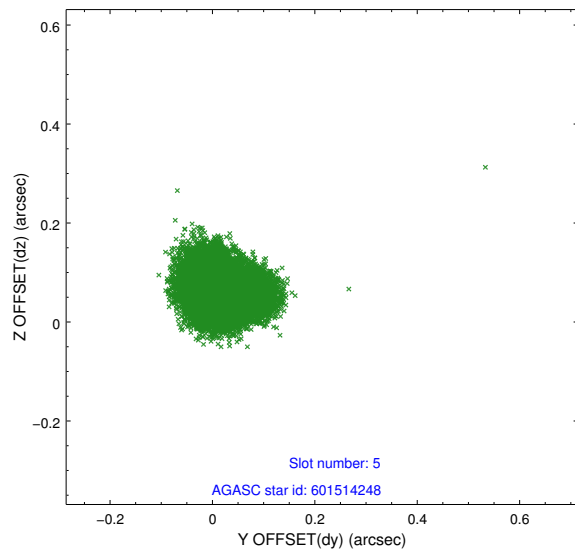
2.4.1 Slot 3



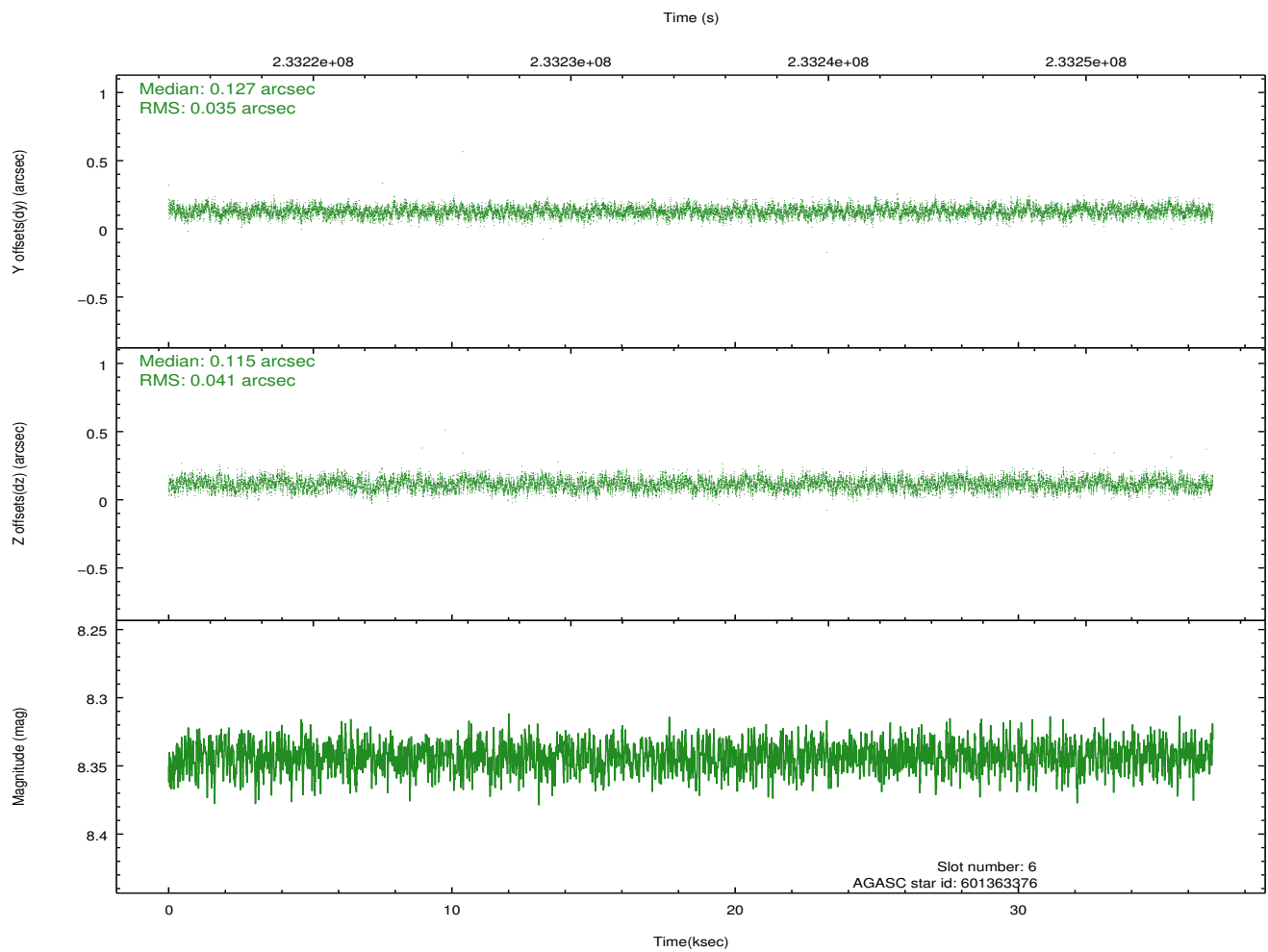
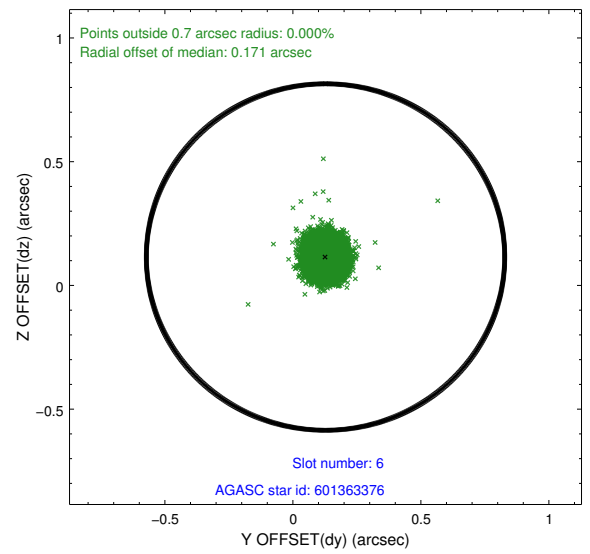
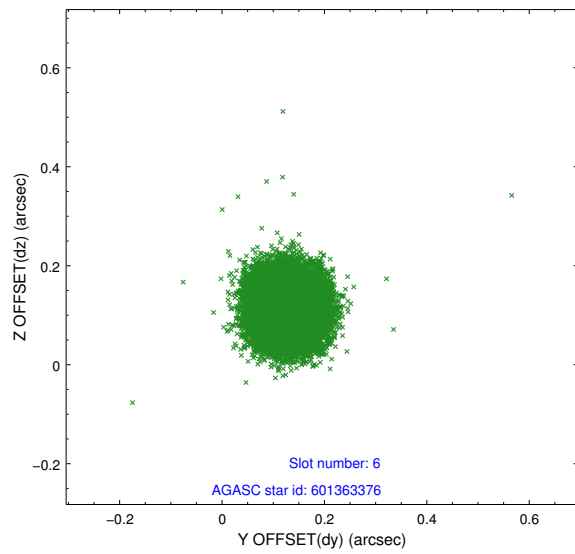
2.4.2 Slot 4



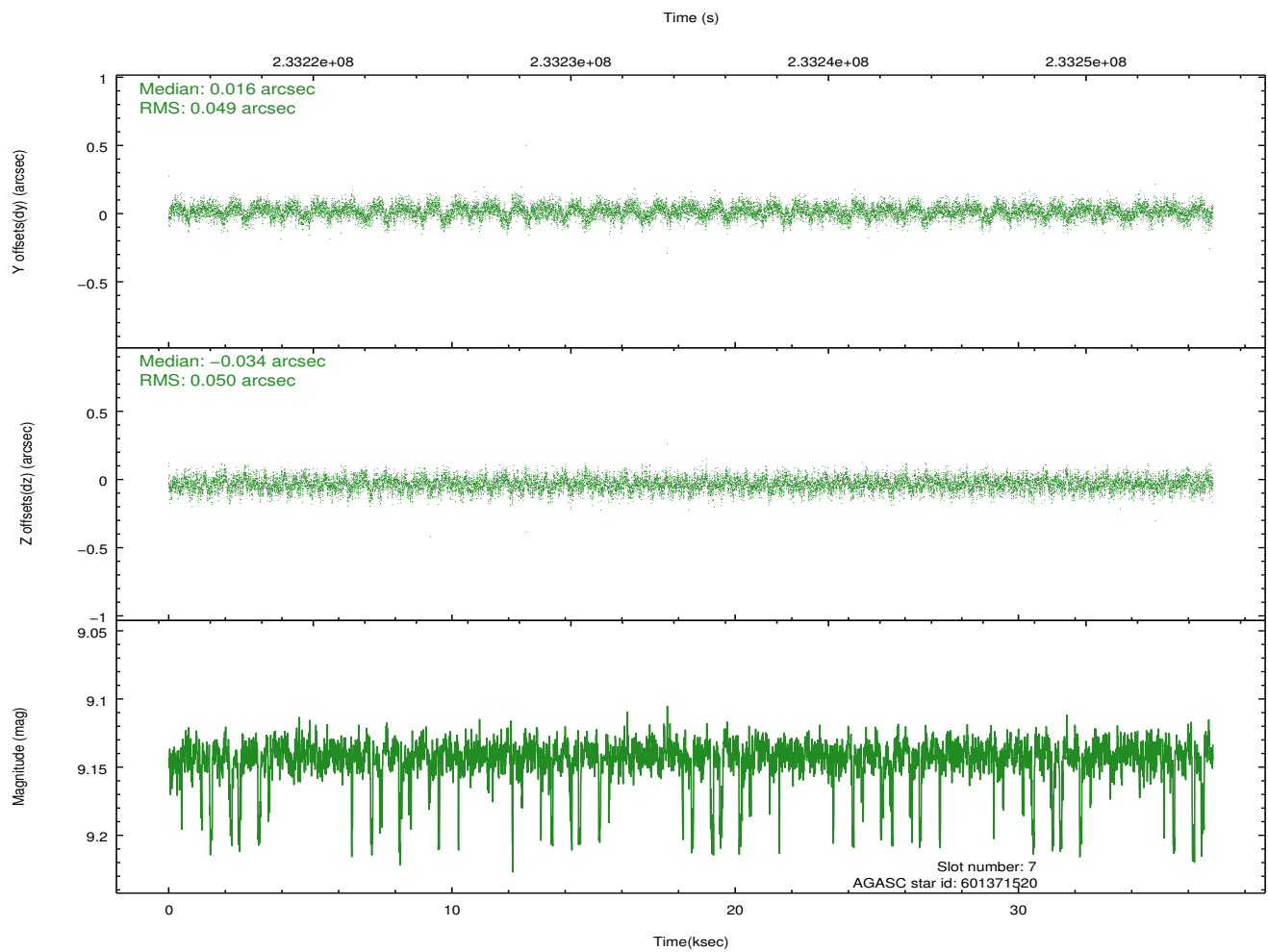
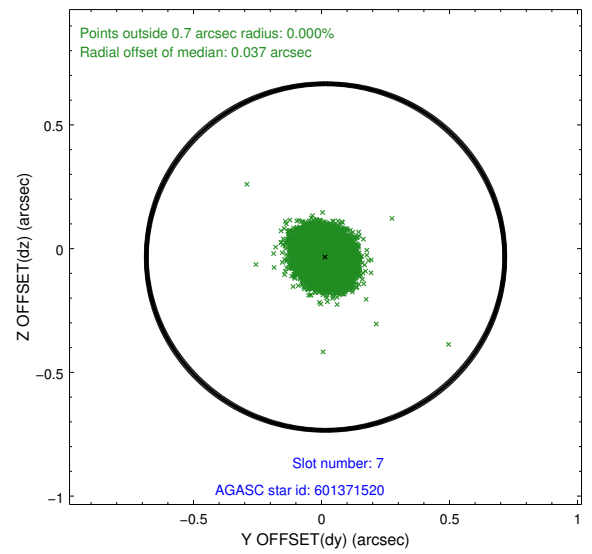
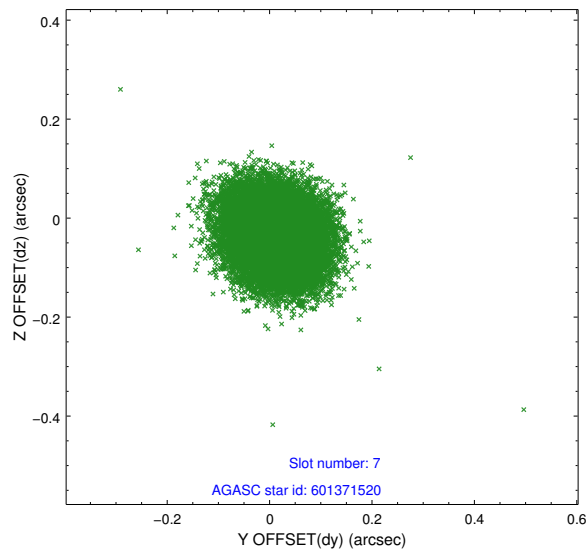
2.4.3 Slot 5



2.4.4 Slot 6

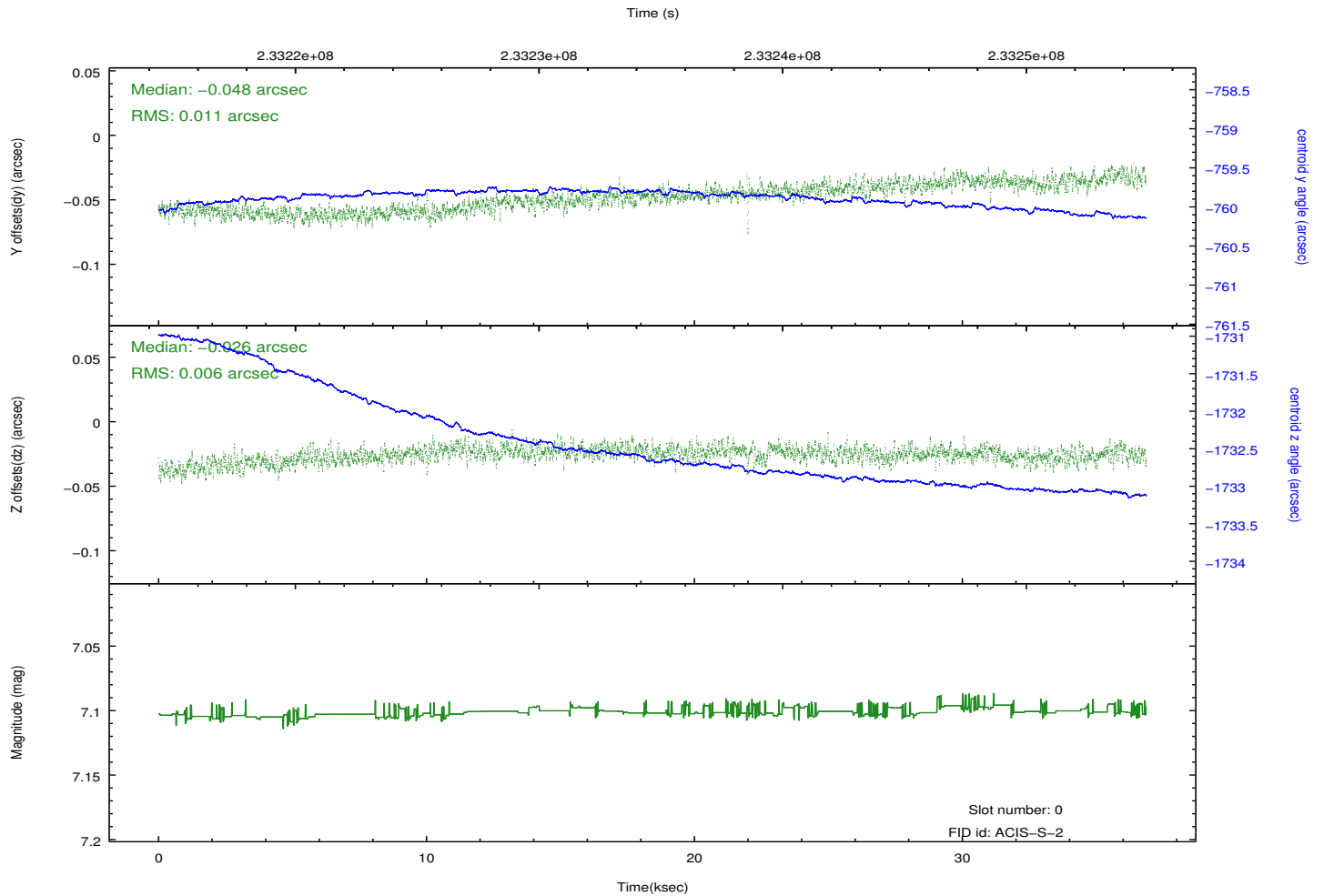
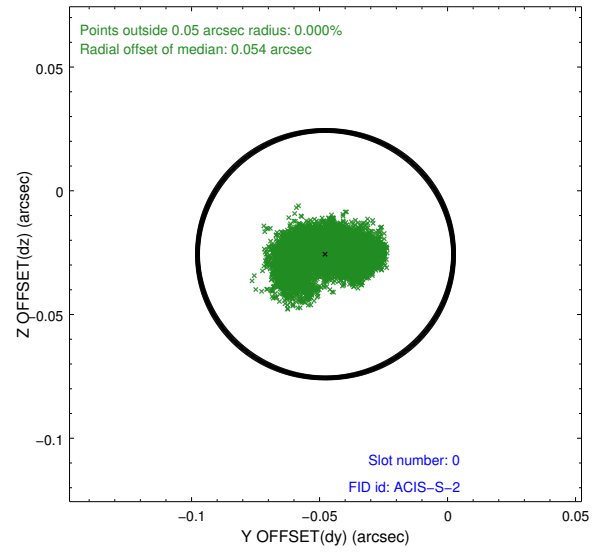
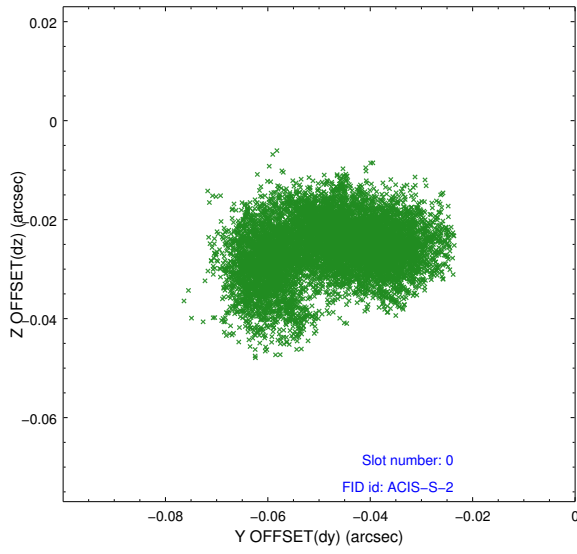


2.4.5 Slot 7

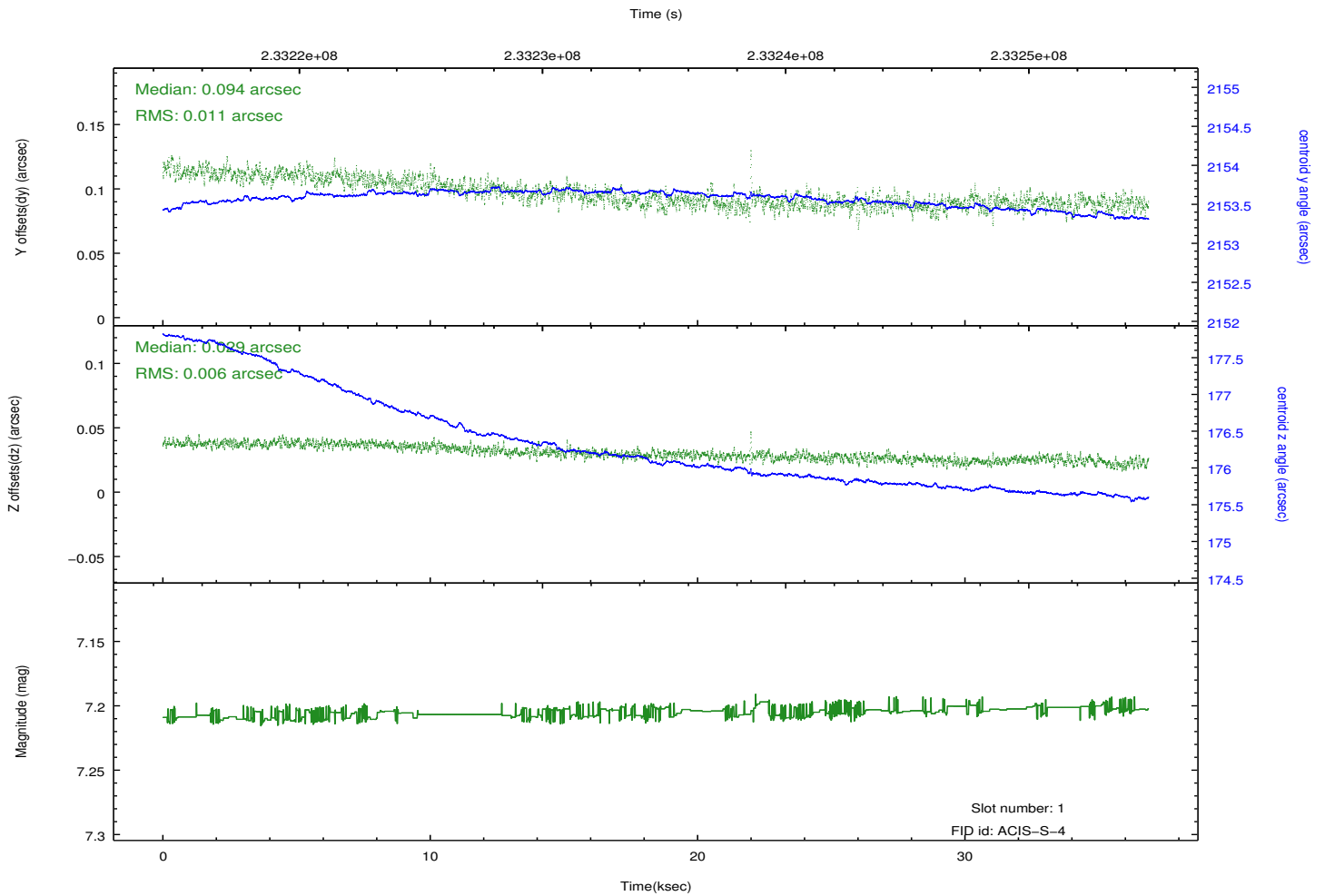
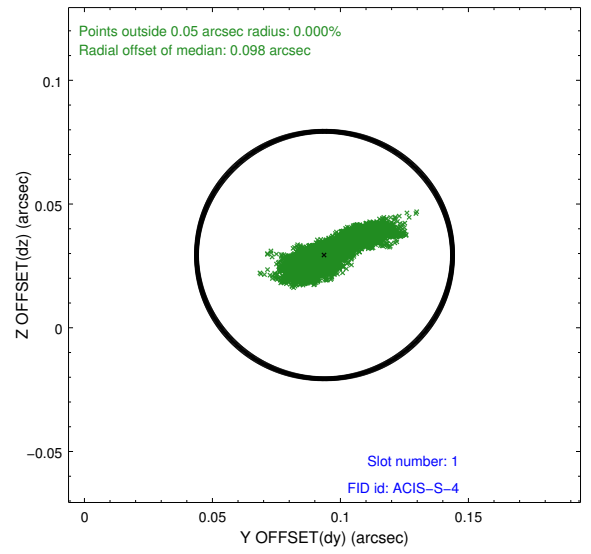
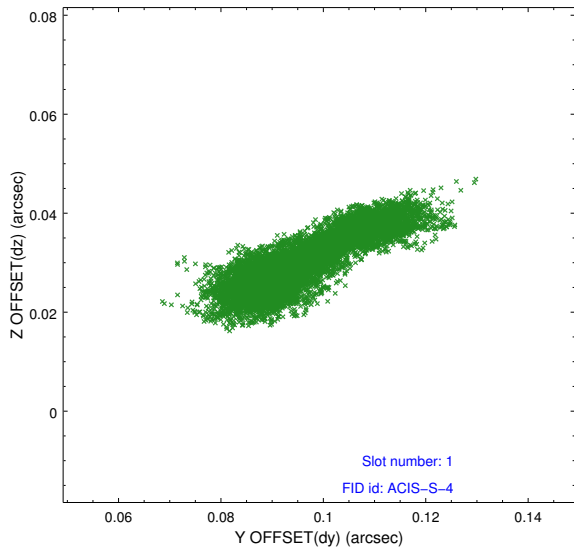


2.5 FID Slots

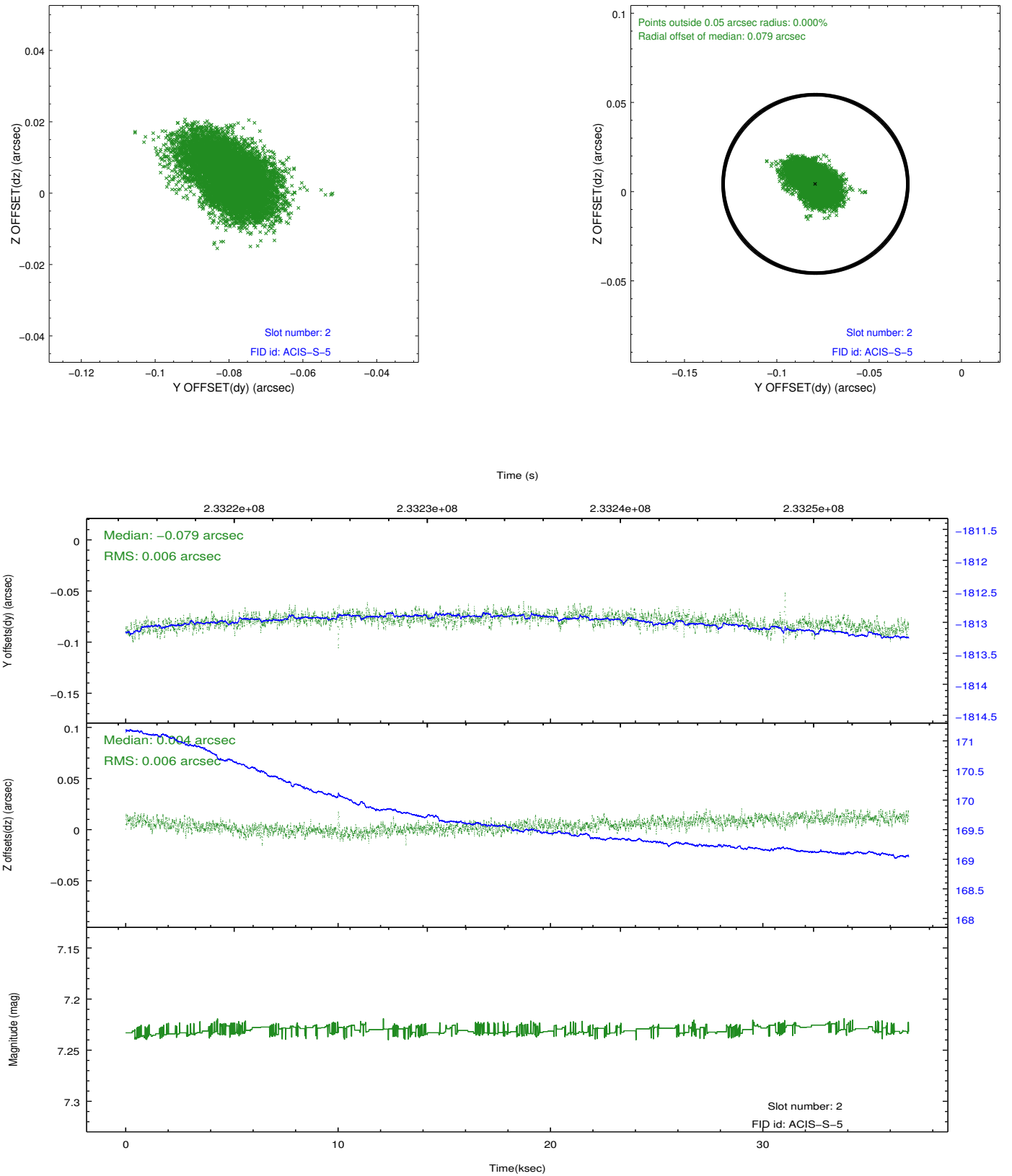
2.5.1 Slot 0



2.5.2 Slot 1



2.5.3 Slot 2



A Summary

A.1 Status

V&V Scientist	Jen Lauer
V&V Date (YYYY-MM-DD)	2013.01.16
V&V Edition	1
V&V Disposition and Status	OK
V&V Charge Time	36.8676

A.2 Comments

Joint Proposal: HST. Roll preference not met.