

V&V Reference Report

L2 ASCDS Version : 8.5.1

Observation 5779 - L2 Version 3
Chandra X-Ray Center

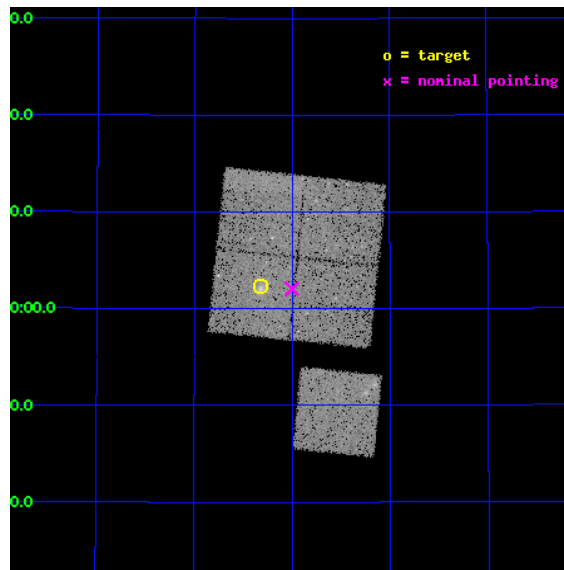
L2 Processing Date : Dec 18 2012

Contents

1	Front	2
2	OBI	3
2.1	OBI	3
2.1.1	Images	3
2.1.2	Bias	3
2.1.3	Parameters	4
2.1.4	Events	4
2.2	Compared Parameters	5
2.3	Aspect	6
2.4	Star Slots	9
2.4.1	Slot 3	9
2.4.2	Slot 4	10
2.4.3	Slot 5	11
2.4.4	Slot 6	12
2.4.5	Slot 7	13
2.5	FID Slots	14
2.5.1	Slot 0	14
2.5.2	Slot 1	15
2.5.3	Slot 2	16
A	Summary	17
A.1	Status	17
A.2	Comments	17

1 Front

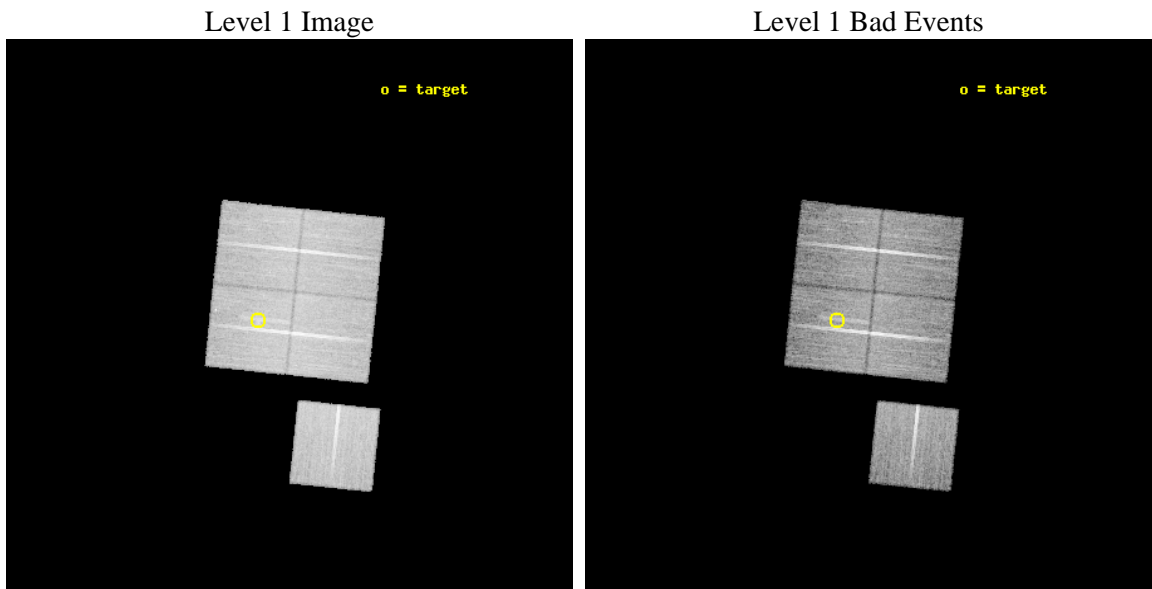
seq_num	800492	Sequence number
obs_id	5779	Observation id
title	Chandra observations of high-redshift clusters of galaxies from the 400 Square Degrees ROSAT PSPC survey	Proposal title
observer	Dr. Stephen Murray	Principal investigator
object	cl0958+4702	Source name
dtcycle	0	
cycle	P	events from which exps? Prim/Second/Both
ra_targ	149.580417	Observer's specified target RA [deg]
dec_targ	47.038056	Observer's specified target Dec [deg]
ra_nom	149.50089030741	Nominal RA [deg]
dec_nom	47.034400593554	Nominal Dec [deg]
roll_nom	185.99195280239	Nominal Roll [deg]
revision	3	Processing version of data
ontime	25565.617970377	Sum of GTIs [s]
livetime	25231.58435046	Livetime [s]
ontime0	25568.758970529	Sum of GTIs [s]
ontime1	25568.758940637	Sum of GTIs [s]
ontime2	25565.61800018	Sum of GTIs [s]
ontime3	25565.617970377	Sum of GTIs [s]
ontime6	25568.758950621	Sum of GTIs [s]
l2events	65910	Number of level 2 events



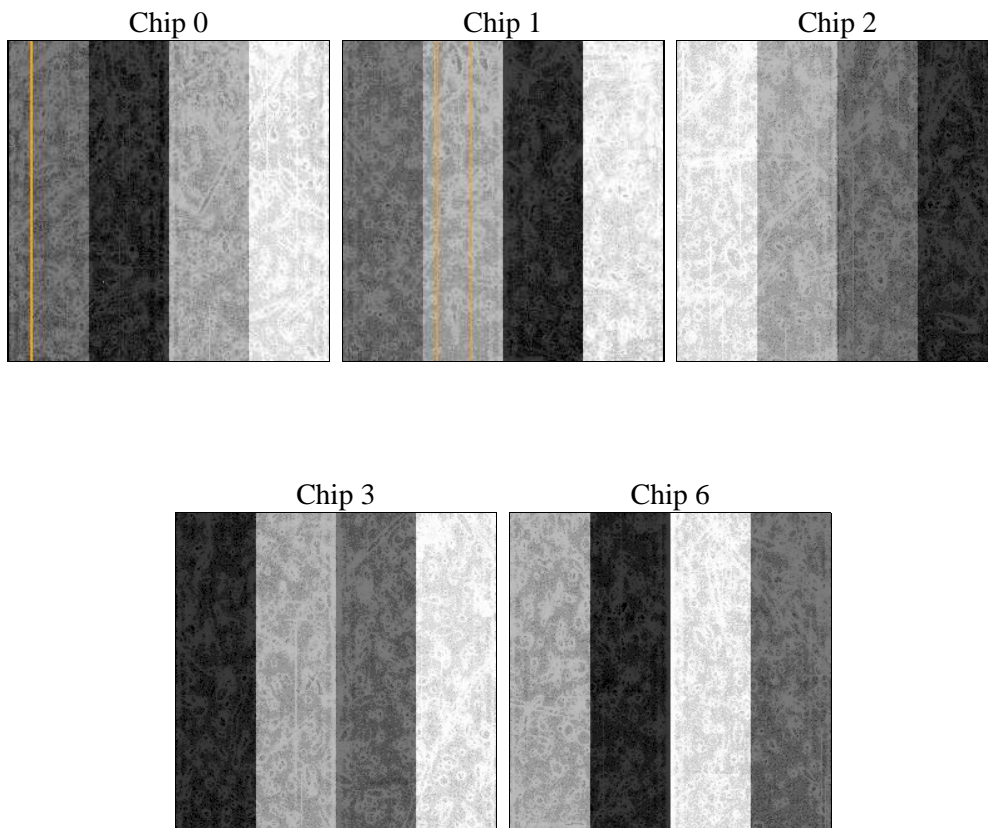
2 OBI

2.1 OBI

2.1.1 Images



2.1.2 Bias



2.1.3 Parameters

obi_num	0	Obi number	sched_exp_time	25800.000000	[s] Scheduled observation exposure time
ascdsver	8.5.1	Processing system revision	ontime	25565.617970377	Sum of GTIs [s]
caldsver	4.5.5	 	ontime0	25568.758970529	Sum of GTIs [s]
date	2012-12-17T17:29:34	Date and time of file creation	ontime1	25568.758940637	Sum of GTIs [s]
revision	3	Processing version of data	ontime2	25565.61800018	Sum of GTIs [s]
			ontime3	25565.617970377	Sum of GTIs [s]
			ontime6	25568.758950621	Sum of GTIs [s]
			l1events	740218	Number of level 1 events

2.1.4 Events

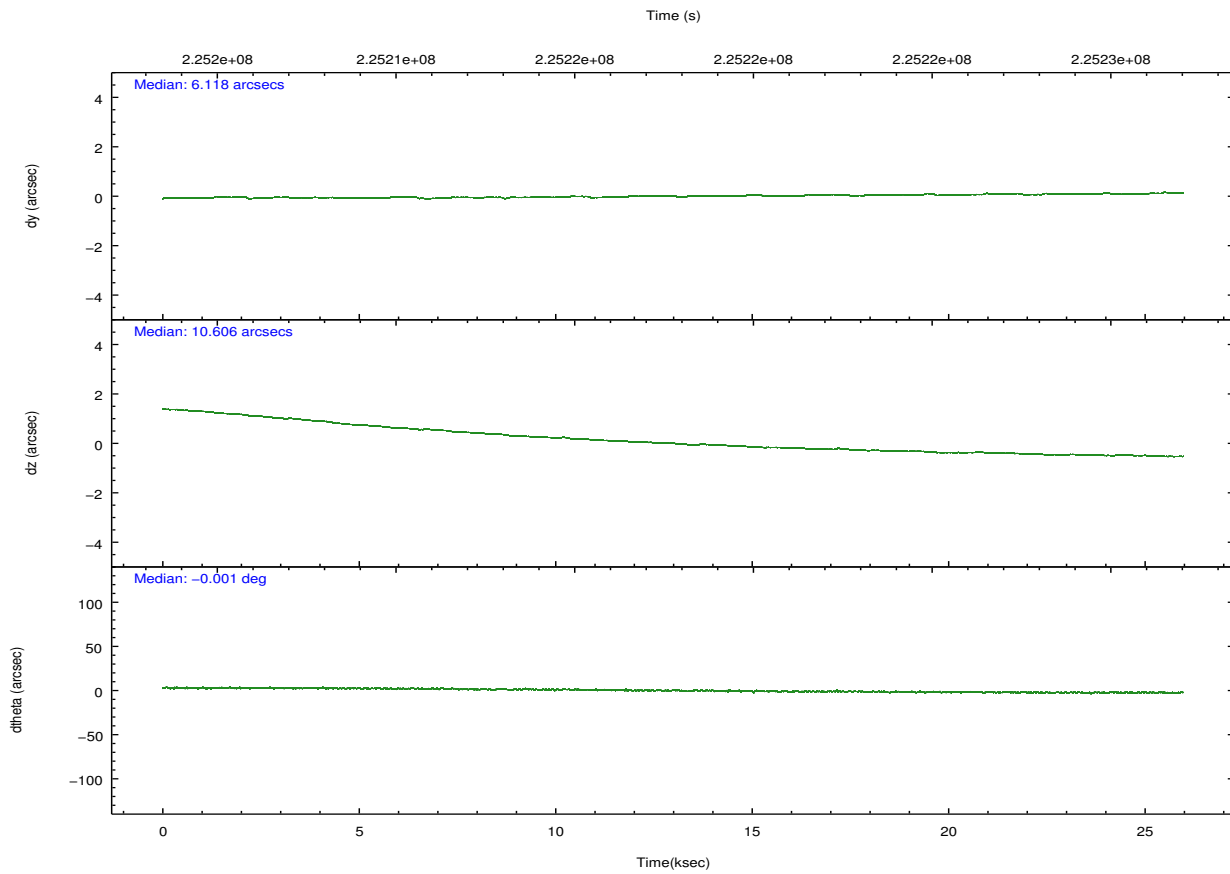
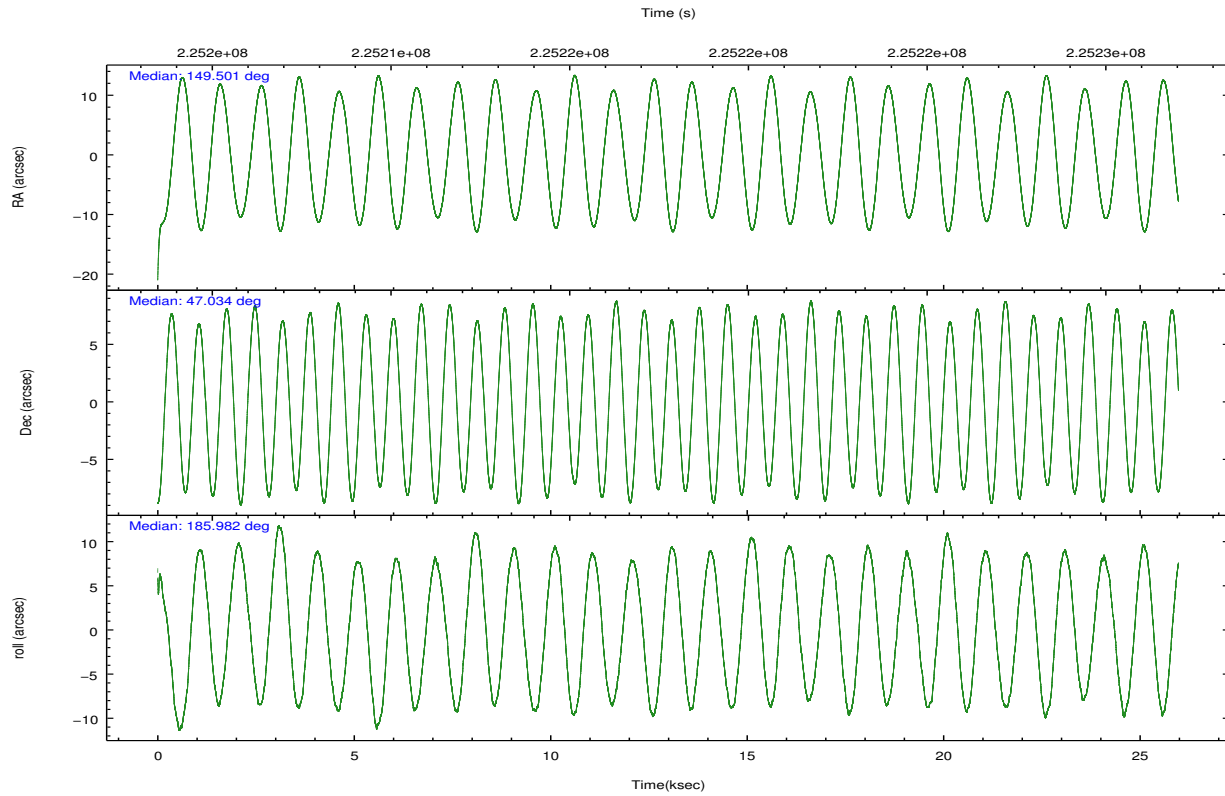
	ccd 0	ccd 1	ccd 2	ccd 3	ccd 6
level 1 events	139318	141194	157120	150612	151974
rejected events	123837	124150	141832	134876	135869
rejected %	88%	87%	90%	89%	89%

	ccd 0	ccd 1	ccd 2	ccd 3	ccd 6
grade 0 events	5590	6131	5562	6153	5816
	4%	4%	3%	4%	3%
grade 1 events	71	75	85	75	60
	0%	0%	0%	0%	0%
grade 2 events	3610	3710	3534	3234	3353
	2%	2%	2%	2%	2%
grade 3 events	1770	1946	1695	1728	1771
	1%	1%	1%	1%	1%
grade 4 events	1614	1908	1683	1727	1767
	1%	1%	1%	1%	1%
grade 5 events	5342	5707	5144	6066	5913
	3%	4%	3%	4%	3%
grade 6 events	2899	3349	2814	2895	3398
	2%	2%	1%	1%	2%
grade 7 events	118422	118368	136603	128734	129896
	85%	83%	86%	85%	85%

2.2 Compared Parameters

Parameter	Planned	Actual	Parameter	Planned	Actual
Instrument	ACIS	ACIS	Obspar format version number	7	7
Detector	ACIS-01236	ACIS-01236	Obspar file type	PREDICTED	ACTUAL
Grating	NONE	NONE	Obspar update status	NONE	UPDATED
Data mode	VFAINT	VFAINT	Number of optional ACIS chips dropped	0	0
Observation mode	POINTING	POINTING	On-chip summing requested	N	N
[deg] Pointing RA	149.533339	149.5008903074066	Subarray requested	NONE	NONE
[deg] Pointing Dec	47.050576	47.03440059355367	Alternating exposures requested	N	N
[deg] Pointing Roll	185.759515	185.991952802387	[s] Primary exposure time	0.000000	3.1
[mm] SIM focus pos	-0.782348	-0.7809083437167272			
[mm] SIM defocus	0	0.001439871863259334			
[mm] SIM translation stage pos	-225.840463	-225.848371962627			
[mm] SIM translation stage offset	-7.752	-7.744081040302689			
[s] Observation start time (MET)	225204944.184000	225203764.26775			
Observation start date	2005-02-19T12:54:40	2005-02-19T12:36:04			
[s] Observation end time (MET)	225230744.184000	225231152.26899			
Observation end date	2005-02-19T20:04:40	2005-02-19T20:12:32			
Read mode	TIMED	TIMED			

2.3 Aspect

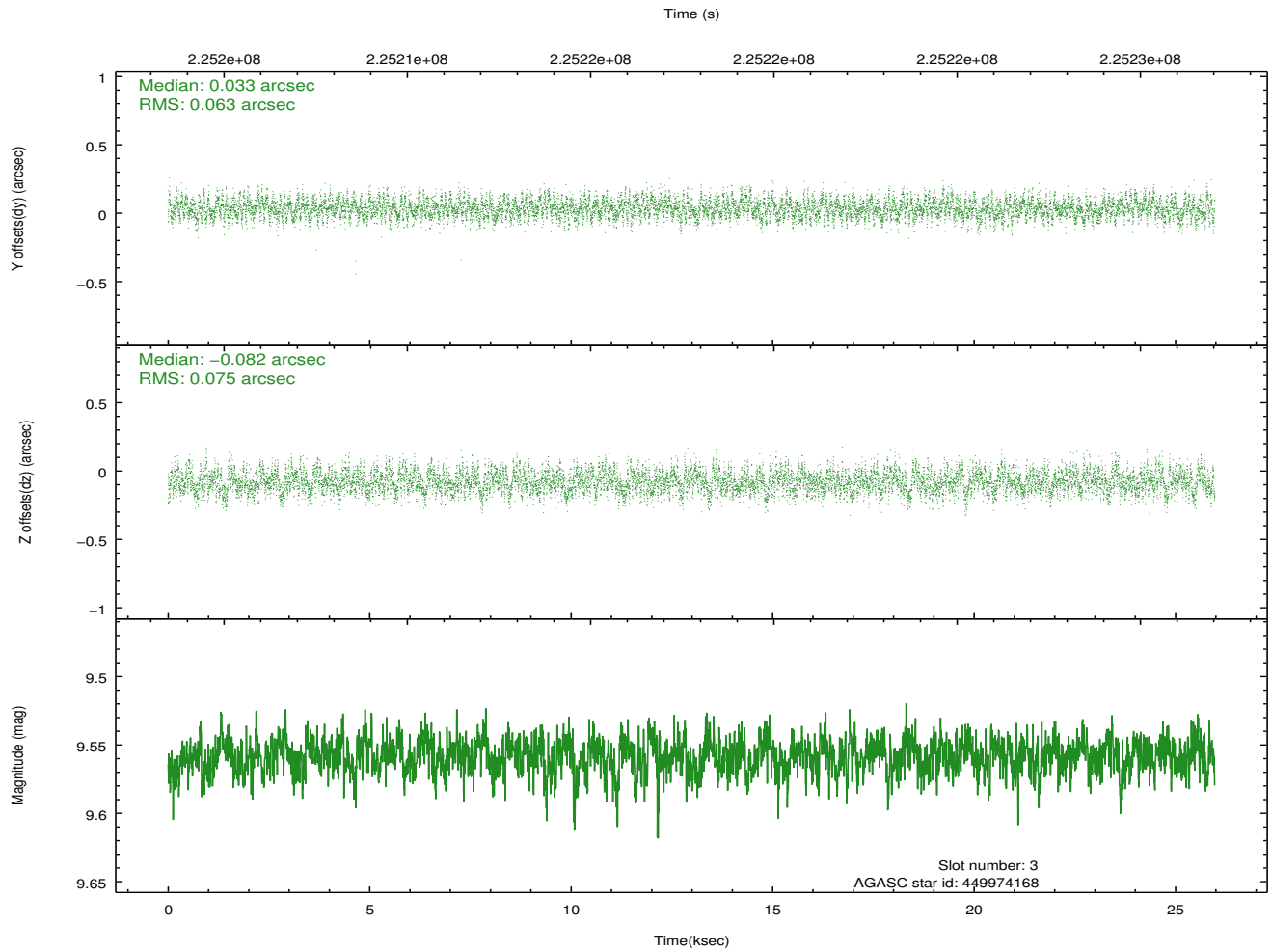
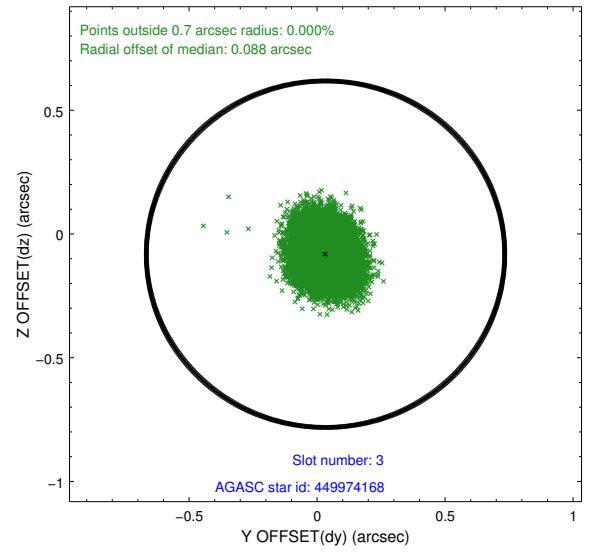
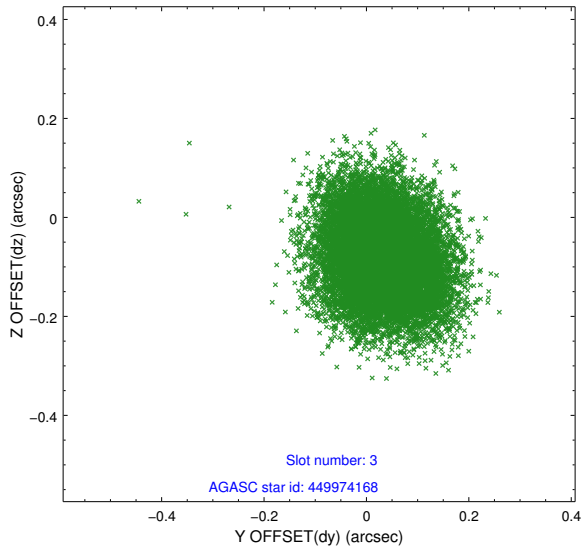


Slot Statistics

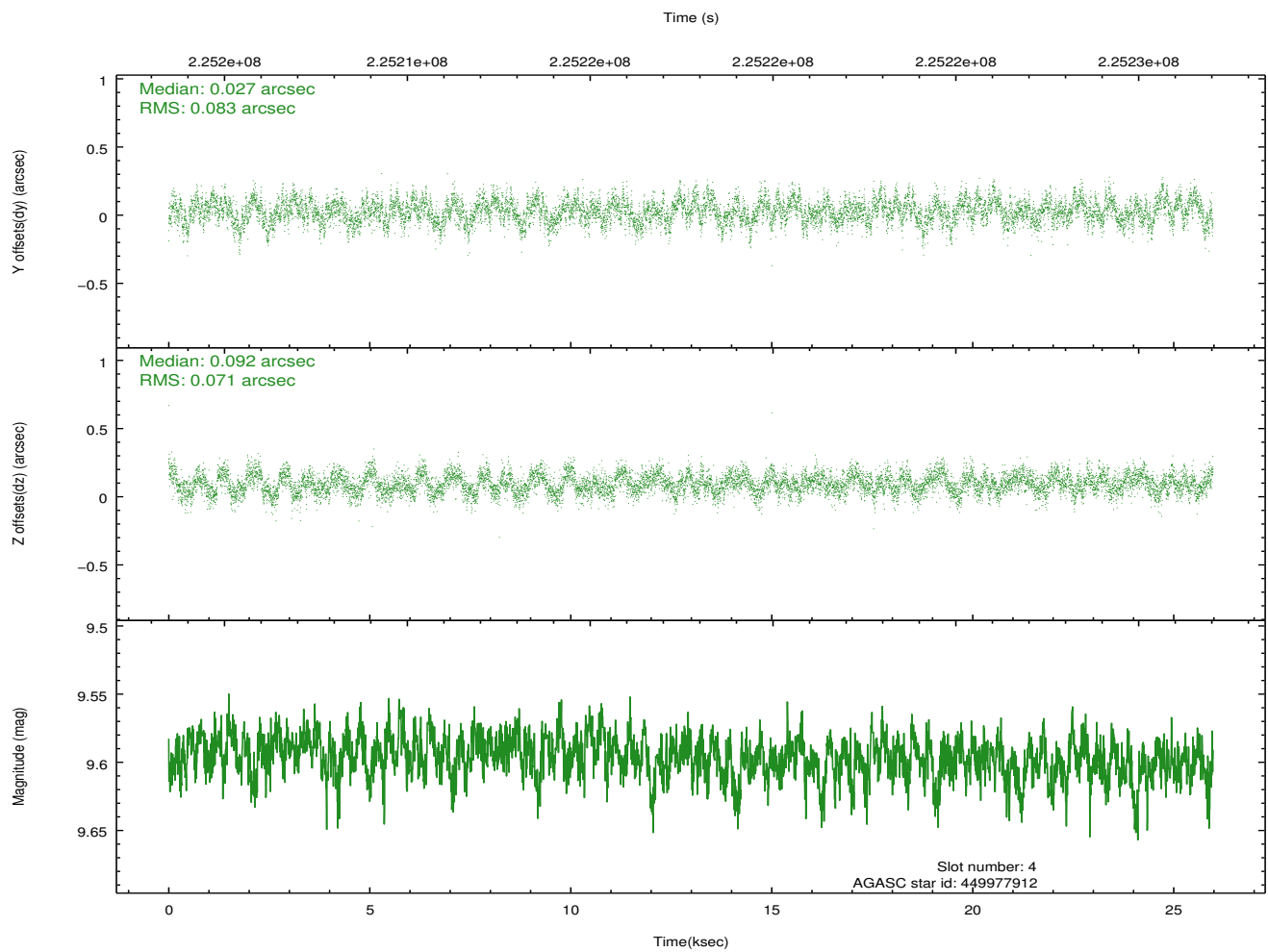
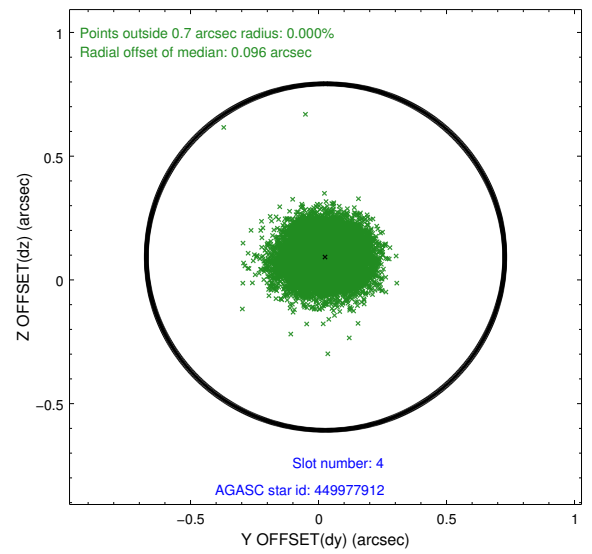
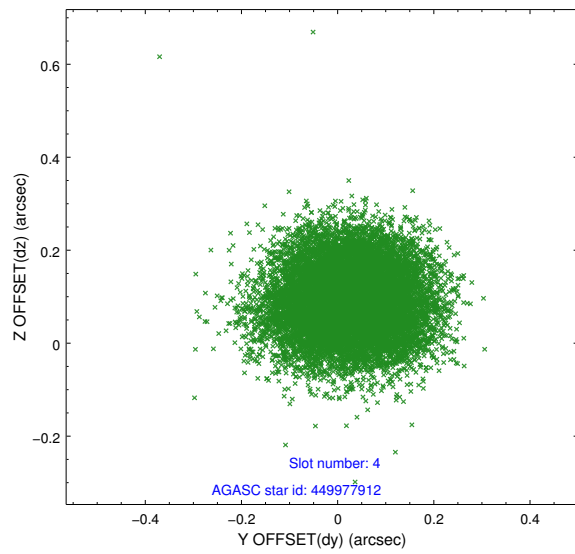
slot	status	id	mag	n_pts	med_dy	med_dz	dr1	dr2	ra	dec	mean_y	mean_z
0	FID	ACIS-I-1	7.24	6337	0.113	-0.106	0.018	0.027	0.000000	0.000000	933.54	-993.35
1	FID	ACIS-I-5	7.22	6337	-0.239	0.097	0.017	0.028	0.000000	0.000000	-1814.84	904.31
2	FID	ACIS-I-6	7.26	6337	0.034	0.078	0.017	0.032	0.000000	0.000000	398.92	1548.88
3	GUIDE	449974168	9.56	12659	0.033	-0.082	0.106	0.168	149.675378	46.468450	-140.28	2120.12
4	GUIDE	449977912	9.60	12665	0.027	0.092	0.116	0.186	148.746474	46.699576	2058.79	1053.34
5	GUIDE	449979224	8.46	12673	-0.035	0.036	0.064	0.105	149.269187	47.303585	550.58	-971.70
6	GUIDE	449980528	8.94	12668	0.012	-0.104	0.074	0.120	149.486514	46.952477	150.51	340.27
7	GUIDE	450372632	9.63	12667	-0.037	0.057	0.108	0.181	149.402650	47.628471	107.21	-2101.78

2.4 Star Slots

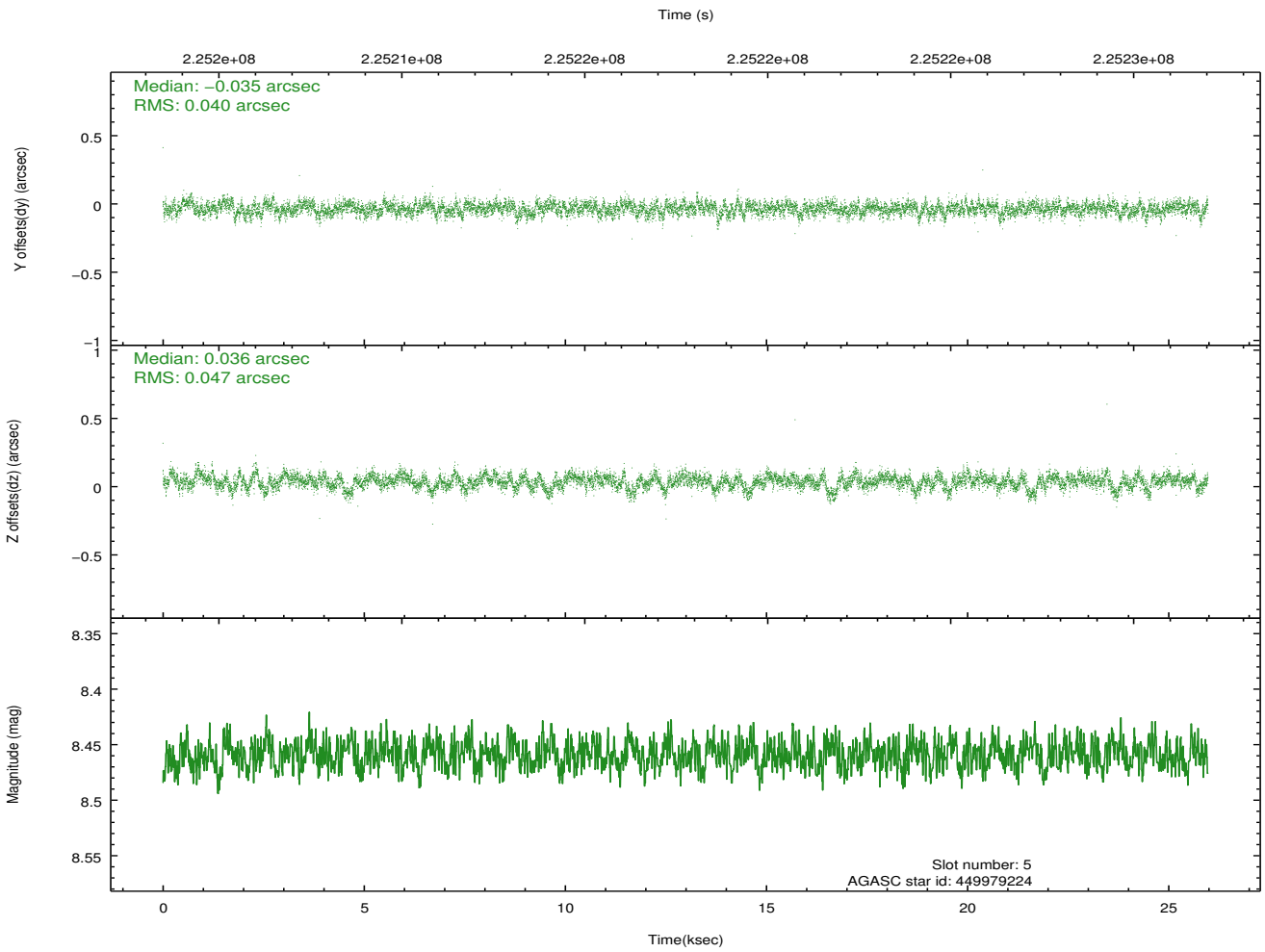
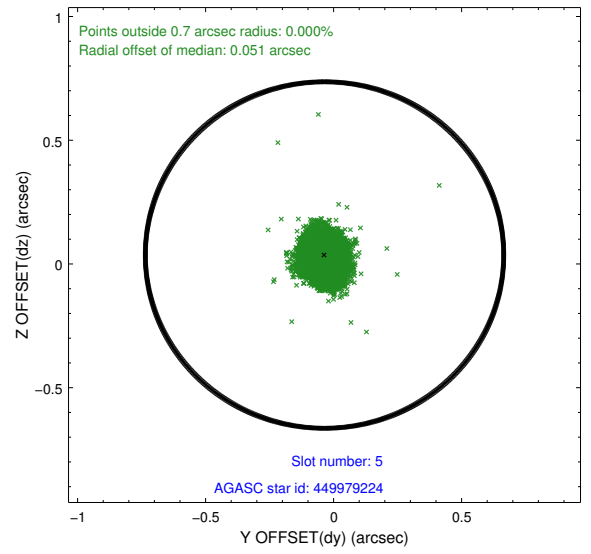
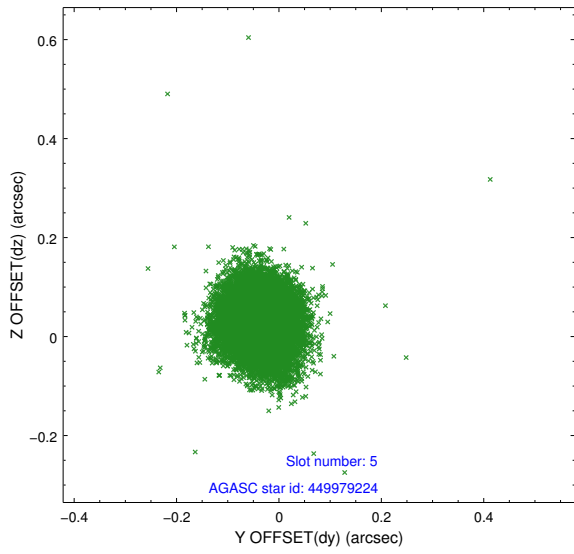
2.4.1 Slot 3



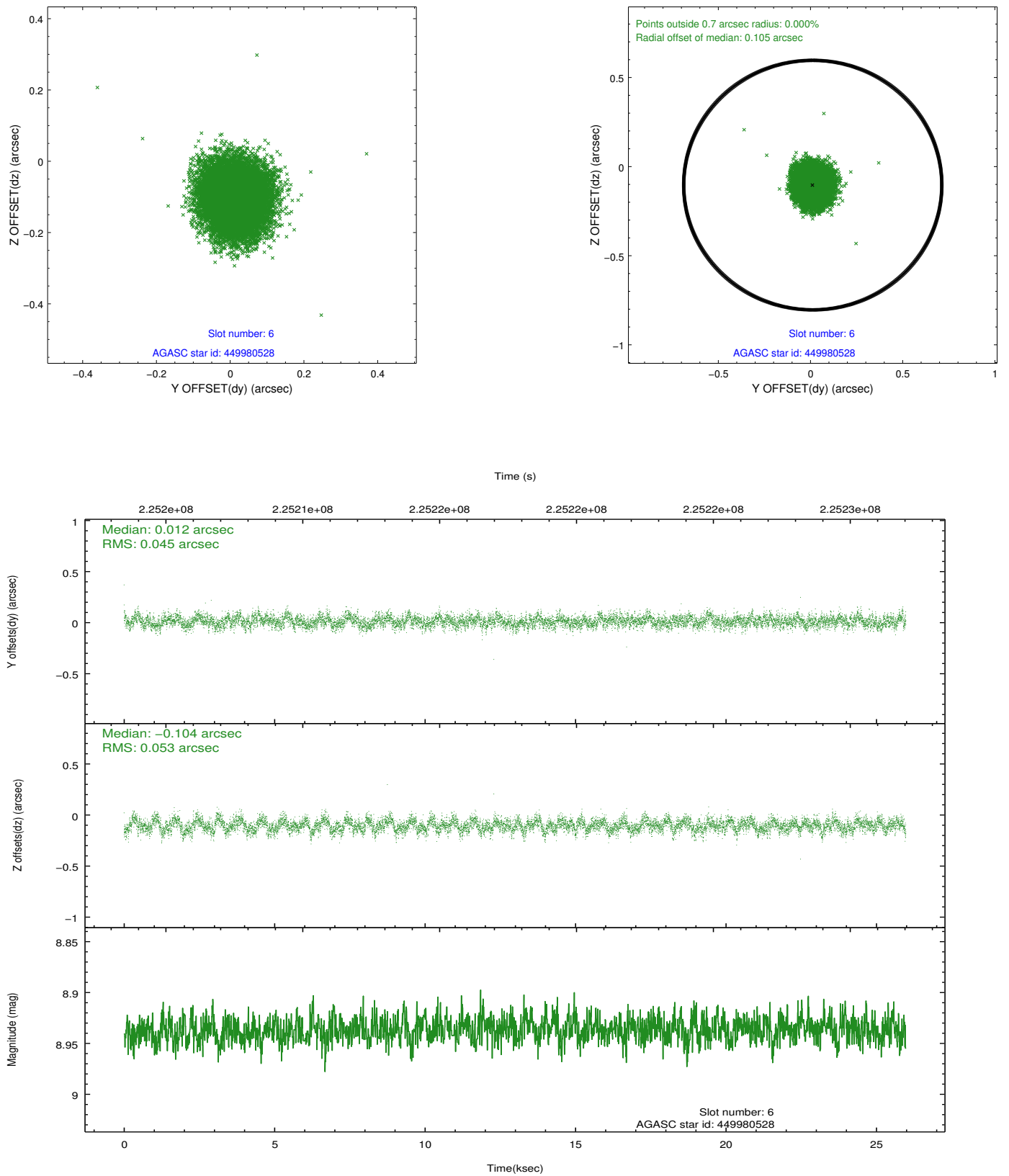
2.4.2 Slot 4



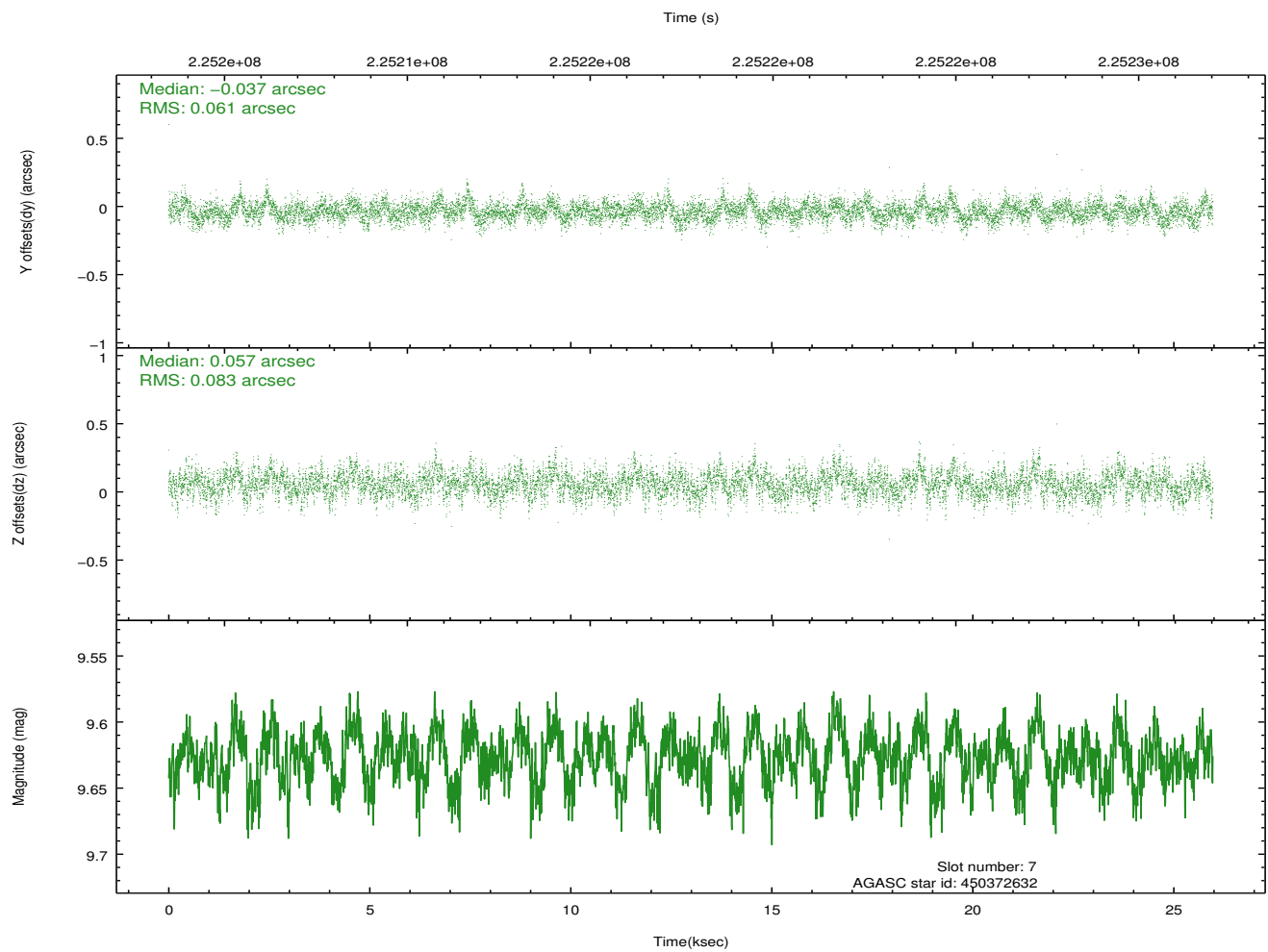
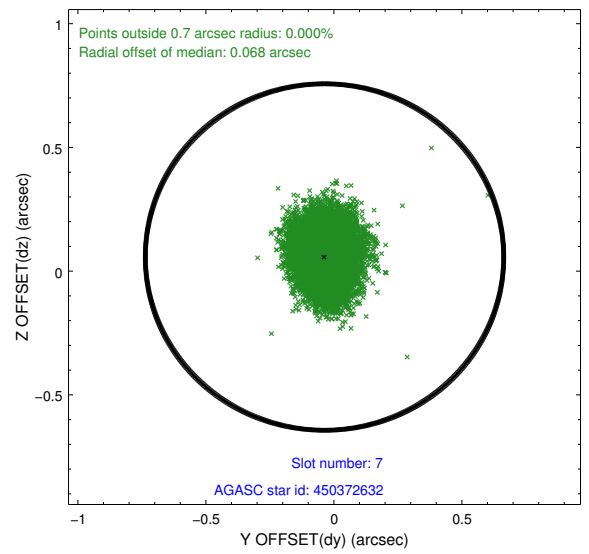
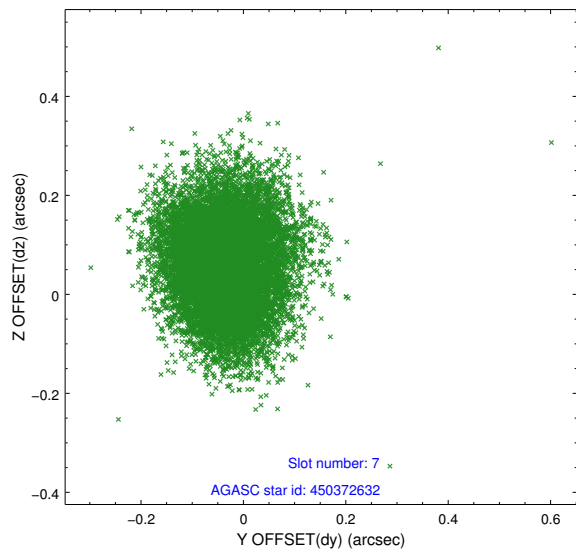
2.4.3 Slot 5



2.4.4 Slot 6

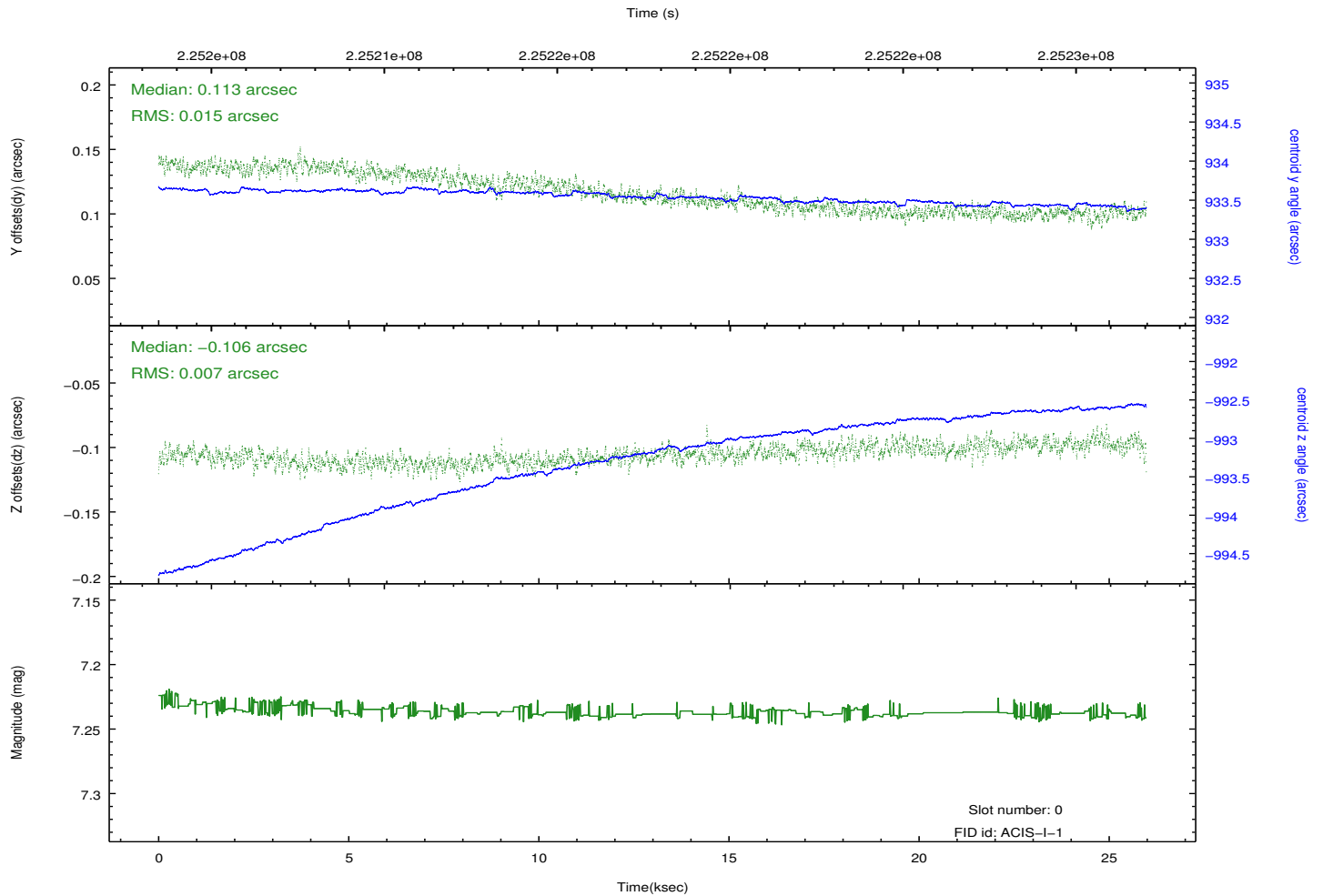
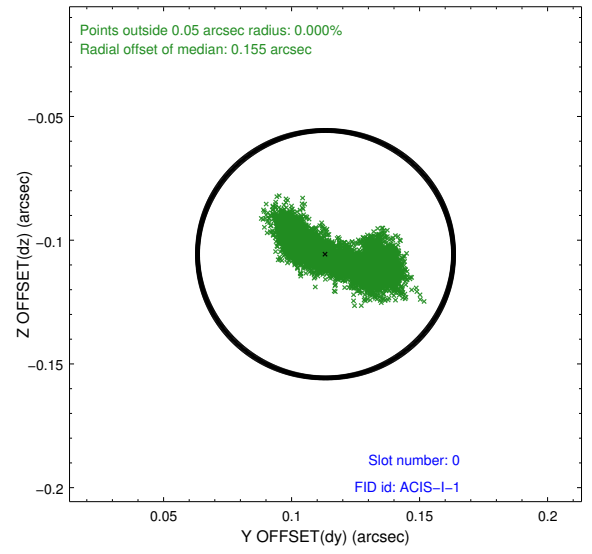
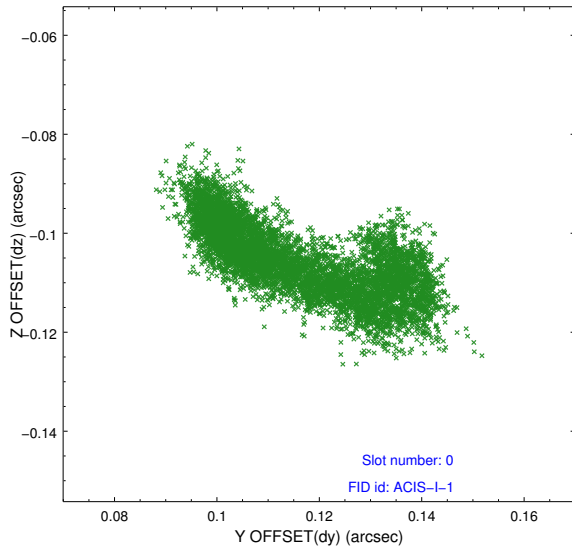


2.4.5 Slot 7

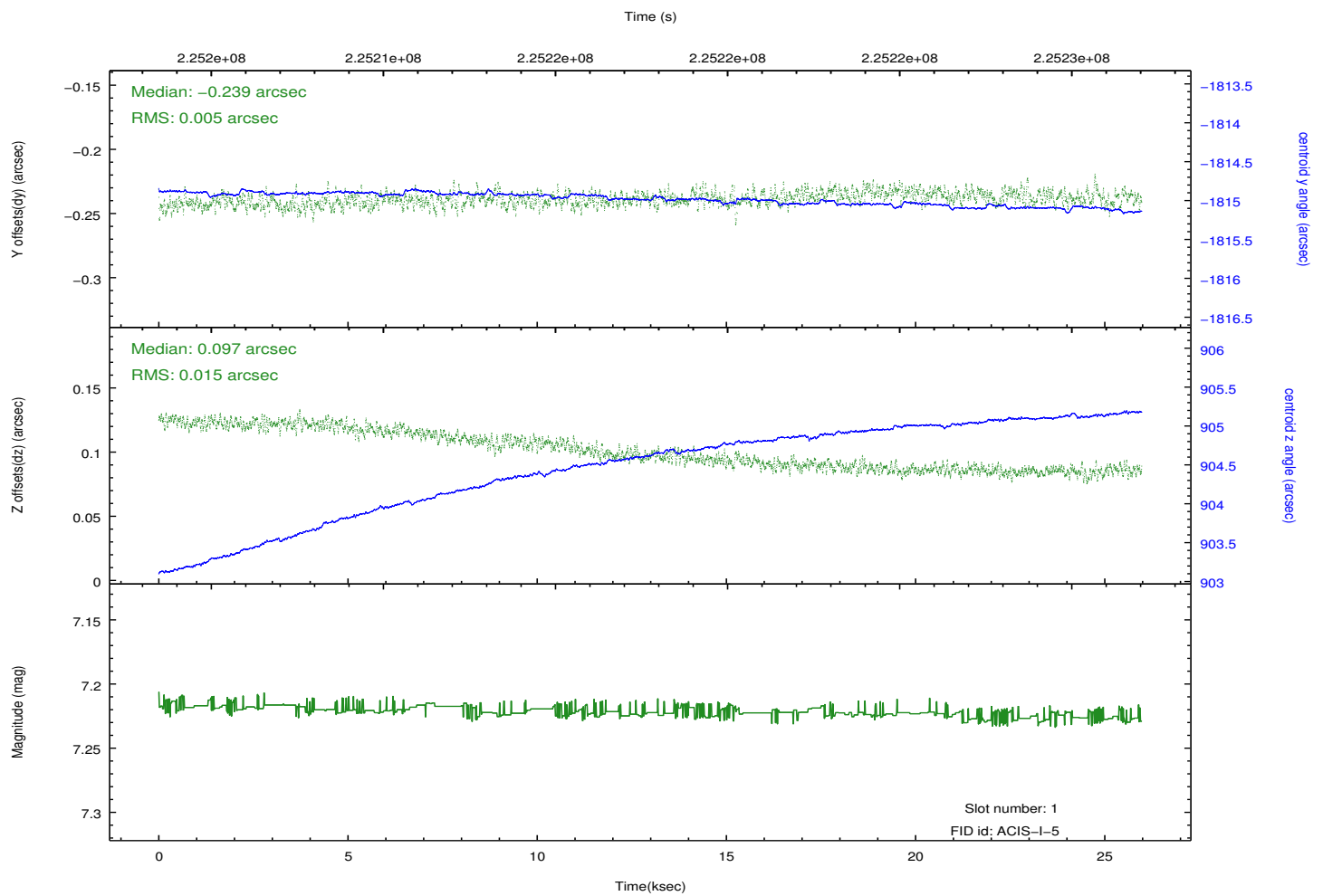
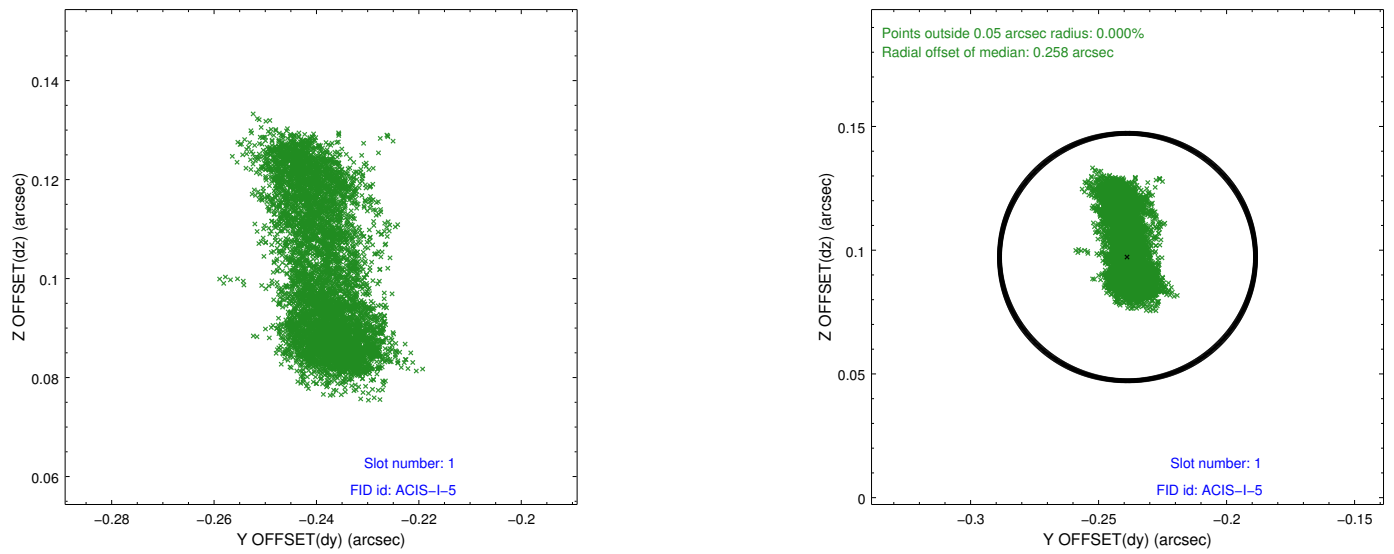


2.5 FID Slots

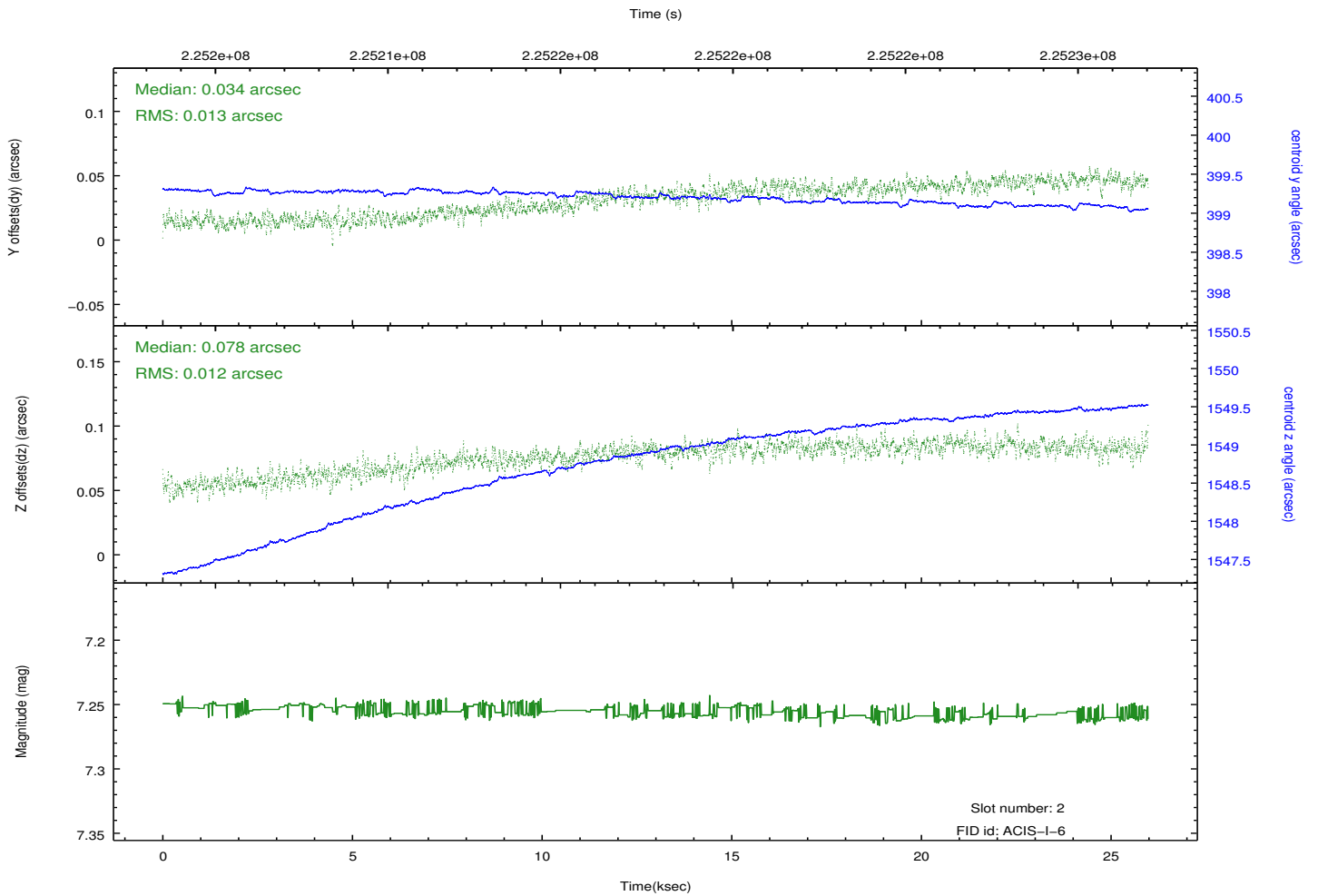
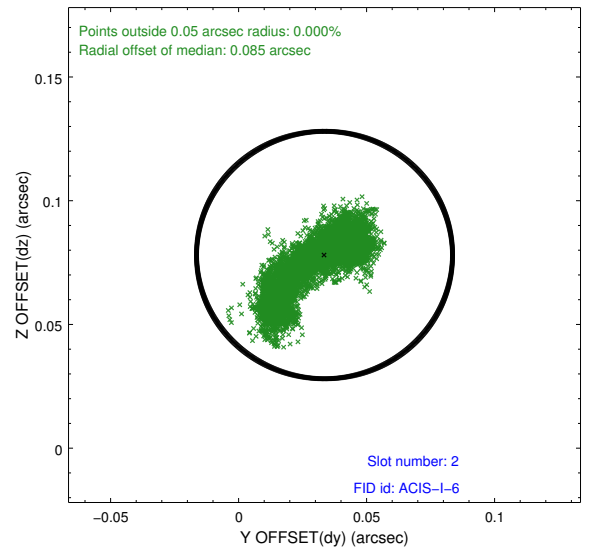
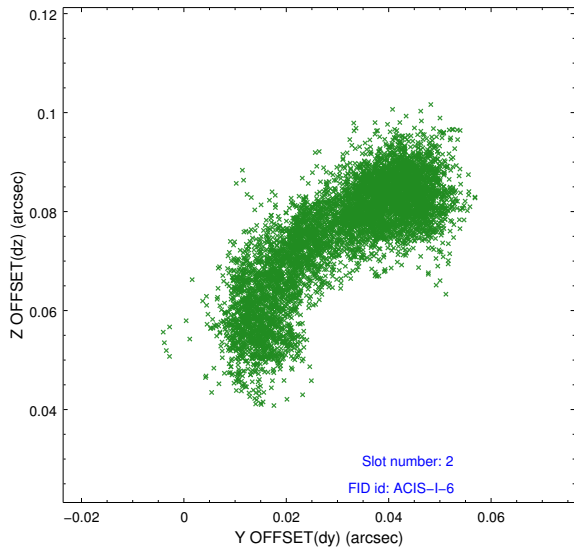
2.5.1 Slot 0



2.5.2 Slot 1



2.5.3 Slot 2



A Summary

A.1 Status

V&V Scientist	Jen Lauer
V&V Date (YYYY-MM-DD)	2013.01.11
V&V Edition	1
V&V Disposition and Status	OK
V&V Charge Time	25.56561

A.2 Comments