

V&V Reference Report

L2 ASCDS Version : 8.5.1.1

Observation 5839 - L2 Version 5
Chandra X-Ray Center

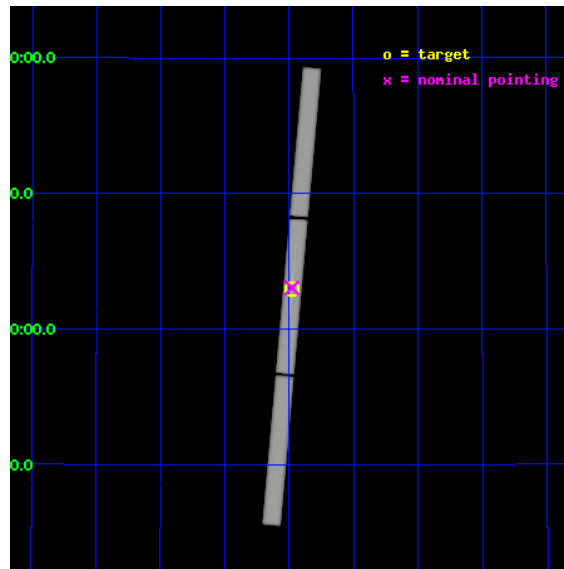
L2 Processing Date : Dec 28 2012

Contents

1	Front	2
2	OBI	3
2.1	OBI	3
2.1.1	Images	3
2.1.2	Parameters	4
2.1.3	Events	4
2.2	Compared Parameters	5
2.3	Aspect	6
2.4	Star Slots	9
2.4.1	Slot 3	9
2.4.2	Slot 4	10
2.4.3	Slot 5	11
2.4.4	Slot 6	12
2.4.5	Slot 7	13
2.5	FID Slots	14
2.5.1	Slot 0	14
2.5.2	Slot 1	15
3	Gratings	16
3.1	LETG Arm	16
A	Summary	18
A.1	Status	18
A.2	Comments	18

1 Front

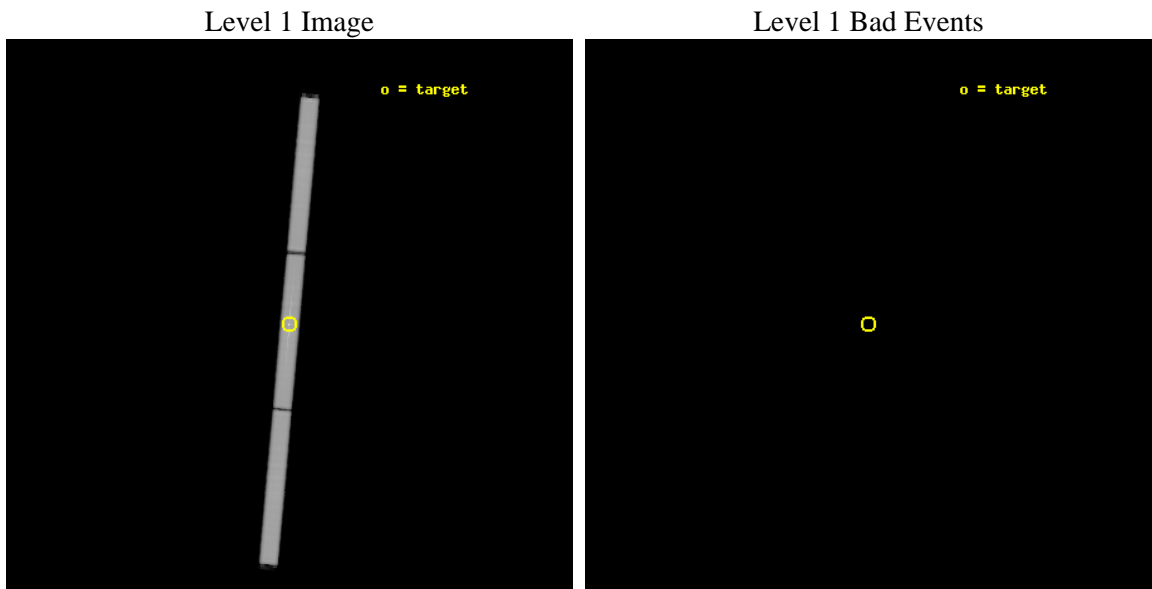
seq_num	900346	Sequence number
obs_id	5839	Observation id
title	Continuing X-Raying the Intergalactic Medium with Blazars in Outburst: Deeper in Redshift and Wider in Area.	Proposal title
observer	Dr. Fabrizio Nicastro	Principal investigator
object	high-z blazar in outburst	Source name
ra_targ	343.490417	Observer's specified target RA [deg]
dec_targ	16.148333	Observer's specified target Dec [deg]
ra_nom	343.49010484564	Nominal RA [deg]
dec_nom	16.152996710821	Nominal Dec [deg]
roll_nom	95.067422828581	Nominal Roll [deg]
revision	5	Processing version of data
ontime	112267.48636675	[s]
livetime	108490.15665668	Ontime multiplied by DTCOR
l2events	7191576	Number of level 2 events



2 OBI

2.1 OBI

2.1.1 Images



2.1.2 Parameters

obi_num	1	Obi number	sched_exp_time	111724.869000	[s] Scheduled observation exposure time
ascdsver	8.5.1.1	Processing system revision	ontime	112267.48636675	[s]
caldbver	4.5.5	 	l1events	9401909	Number of level 1 events
date	2012-12-27T20:14:57	Date and time of file creation			
revision	5	Processing version of data			

2.1.3 Events

Level 1 Events

	segment 1	segment 2	segment 3
level 1 events	3163754	3166443	3071712
rejected events	21116	20902	21279
rejected %	0%	0%	0%

2.2 Compared Parameters

Parameter	Planned	Actual	Parameter	Planned	Actual
Instrument	HRC	HRC	Obspar format version number	7	7
Detector	HRC-S	HRC-S	Obspar file type	PREDICTED	ACTUAL
Grating	LETG	LETG	Obspar update status	NONE	UPDATED
Data mode	OBSERVING	OBSERVING			
Observation mode	POINTING	POINTING			
[deg] Pointing RA	343.508417	343.4901048456405			
[deg] Pointing Dec	16.130435	16.15299671082057			
[deg] Pointing Roll	94.995000	95.06742282858062			
[mm] SIM focus pos	-1.429586	-1.428180813131781			
[mm] SIM defocus	0.1037507710433287	0.1051558262725154			
[mm] SIM translation stage pos	250.455976	250.466033080201			
[mm] SIM translation stage offset	0	-0.01005468664627074			
[s] Observation start time (MET)	232908310.184000	232907268.45512			
Observation start date	2005-05-19T16:44:06	2005-05-19T16:27:48			
[s] Observation end time (MET)	233020035.184000	233021825.02284			
Observation end date	2005-05-20T23:46:11	2005-05-21T00:17:05			

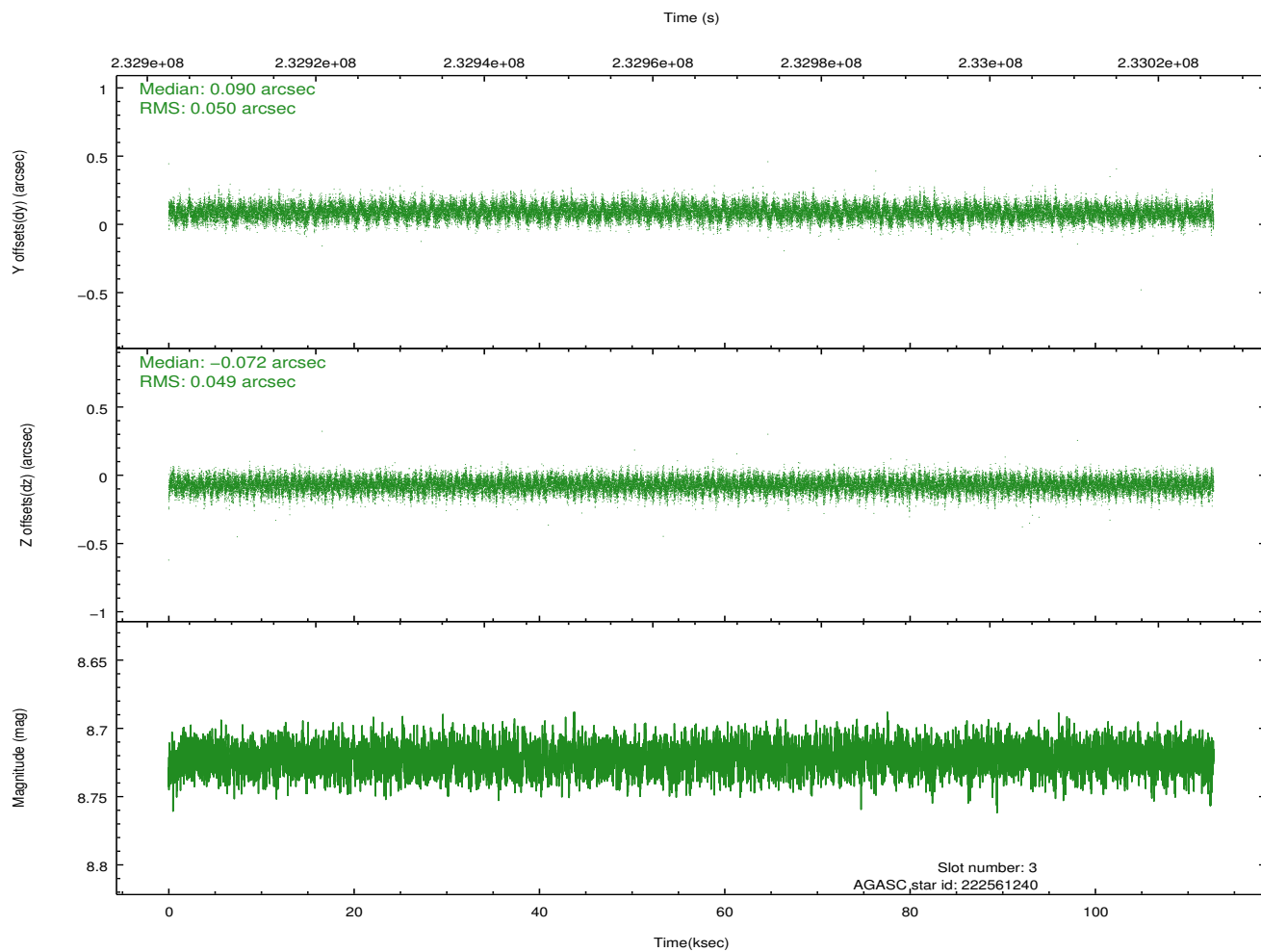
2.3 Aspect

Slot Statistics

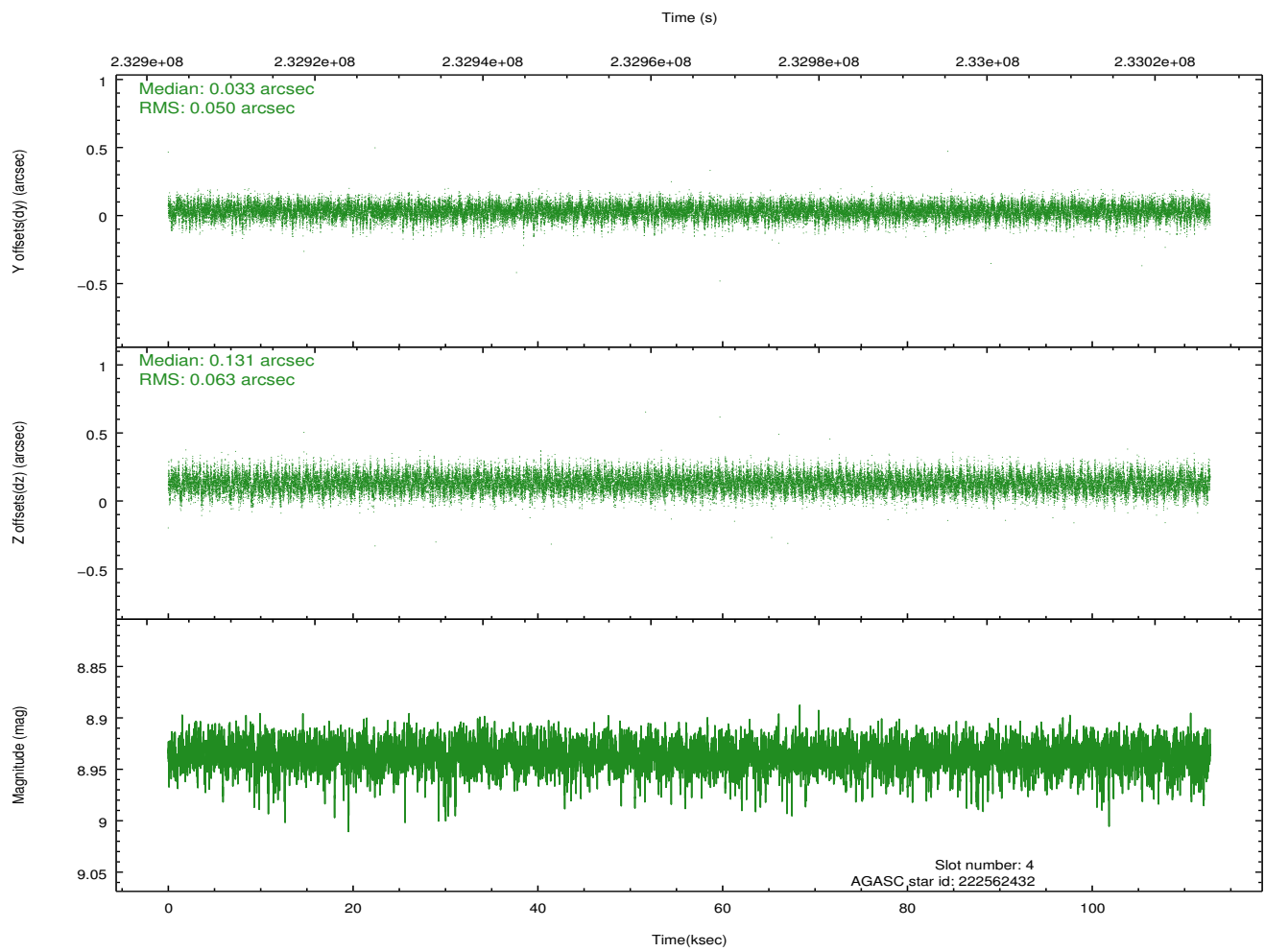
slot	status	id	mag	n_pts	med_dy	med_dz	dr1	dr2	ra	dec	mean_y	mean_z
0	FID	HRC-S-1	7.02	27504	0.138	-0.104	0.007	0.012	0.000000	0.000000	-1162.30	-460.63
1	FID	HRC-S-2	7.02	27504	0.126	-0.102	0.007	0.012	0.000000	0.000000	1237.32	-453.26
2	OMITTED		0.00	0	0.000	0.000	0.000	0.000	0.000000	0.000000	0.00	0.00
3	GUIDE	222561240	8.72	54990	0.090	-0.072	0.074	0.120	343.355884	15.743652	-1340.52	647.44
4	GUIDE	222562432	8.94	54988	0.033	0.131	0.085	0.140	343.698150	16.309399	585.31	-709.11
5	GUIDE	222563736	8.81	54985	-0.127	-0.145	0.087	0.141	343.076284	16.308502	770.51	1430.83
6	GUIDE	222565592	8.25	55001	-0.108	-0.137	0.067	0.107	343.291662	16.508291	1420.66	627.29
7	GUIDE	222565552	9.37	54972	0.114	0.224	0.097	0.156	343.598601	15.997226	-504.53	-268.82

2.4 Star Slots

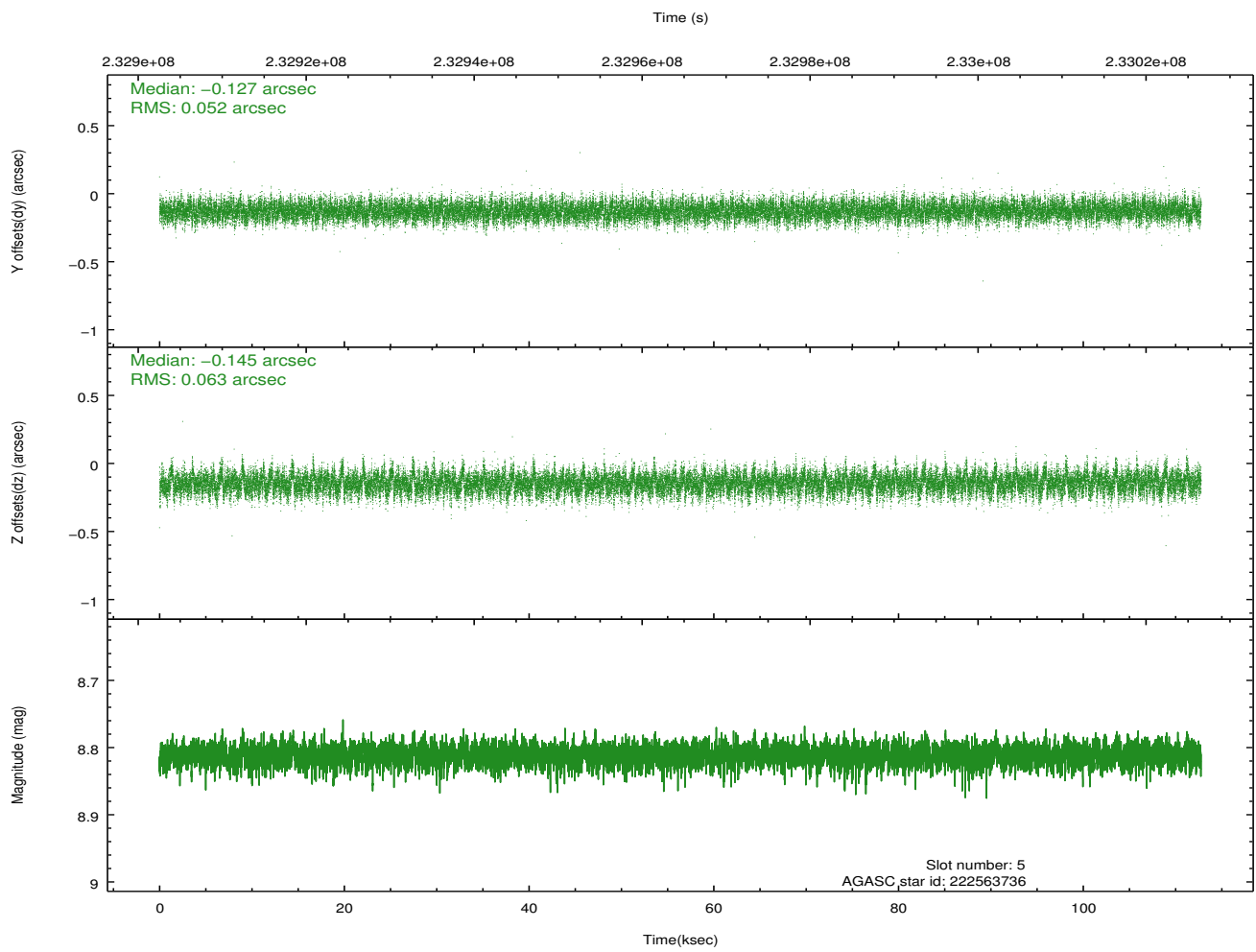
2.4.1 Slot 3



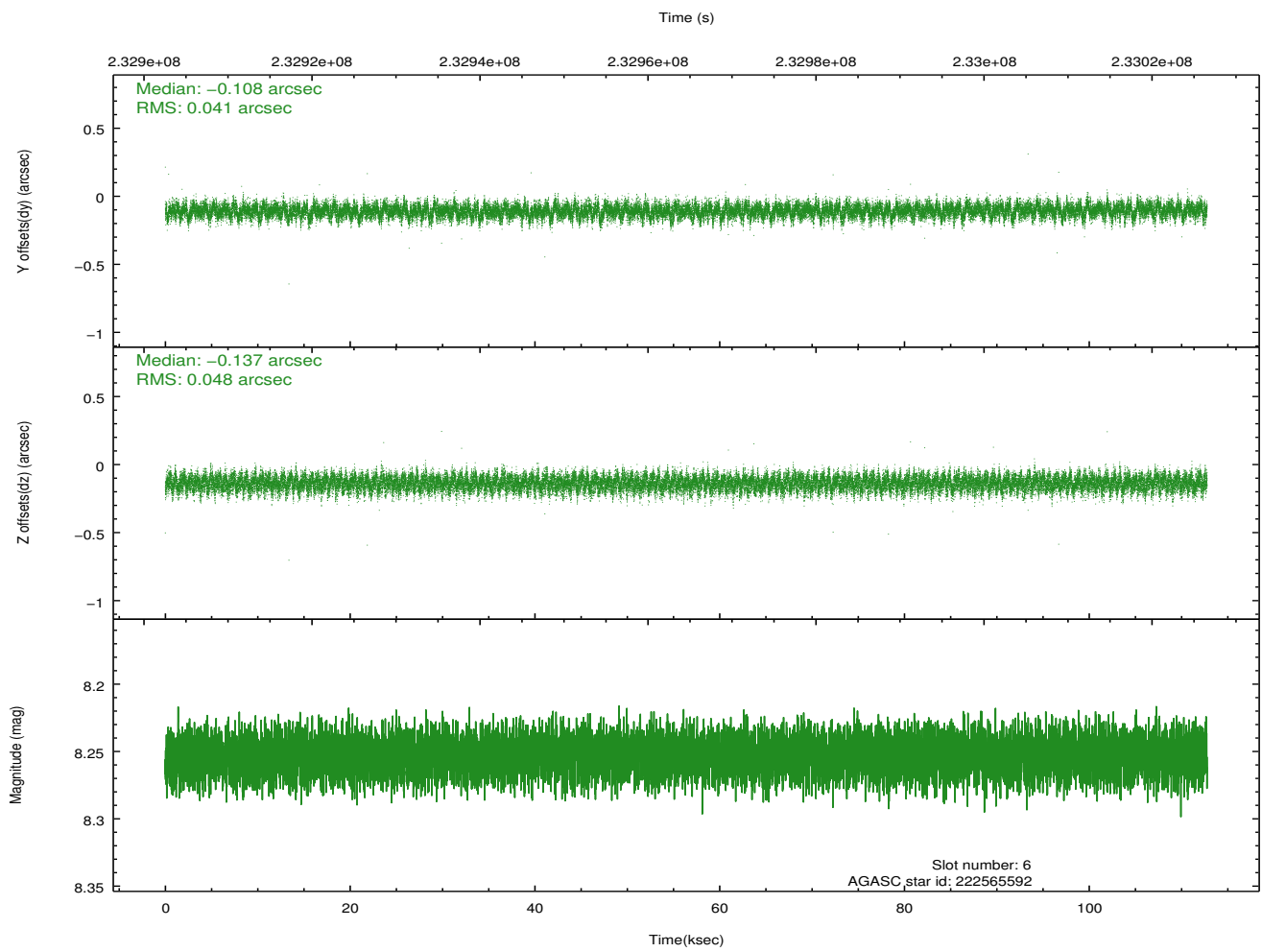
2.4.2 Slot 4



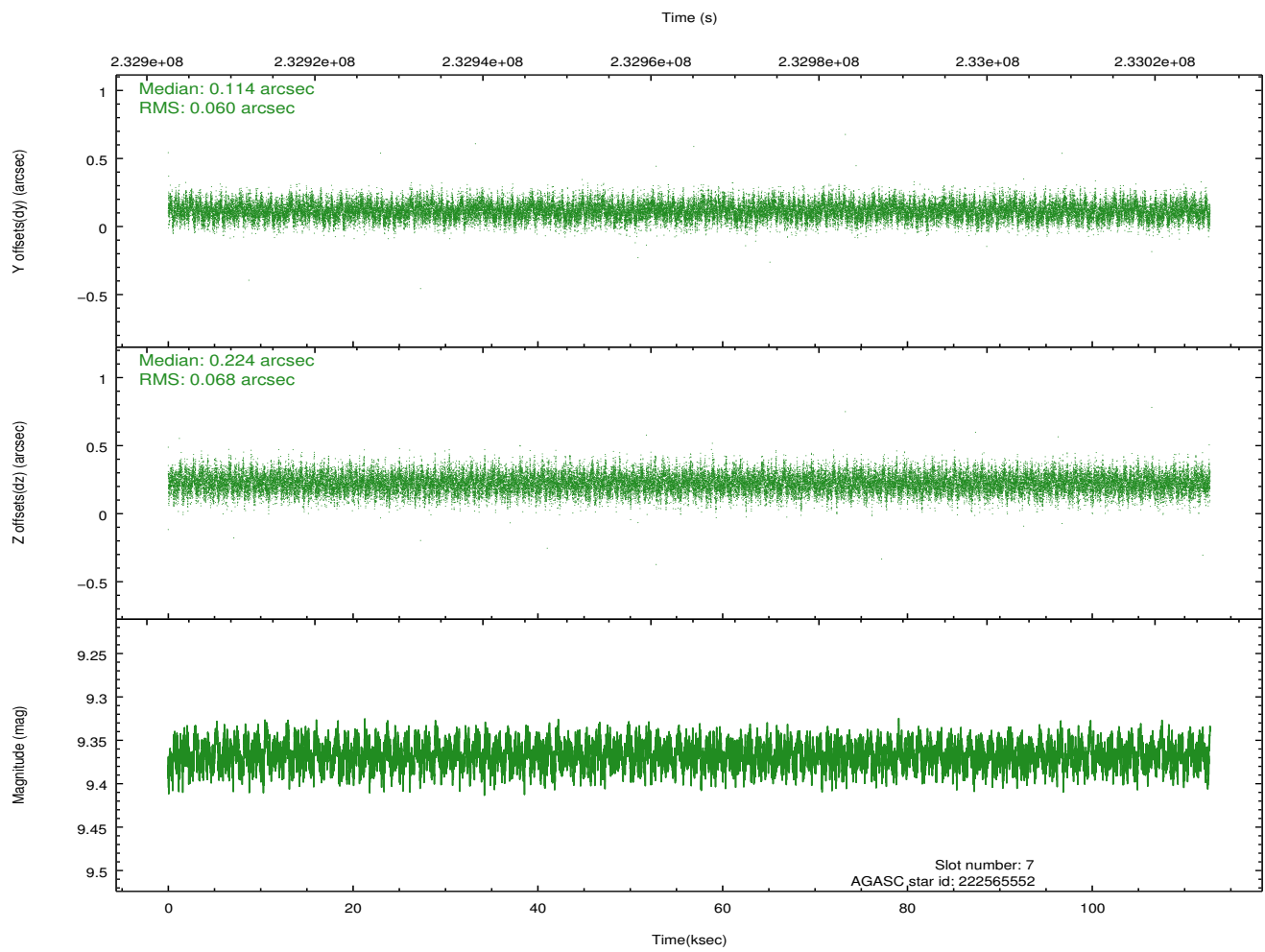
2.4.3 Slot 5



2.4.4 Slot 6

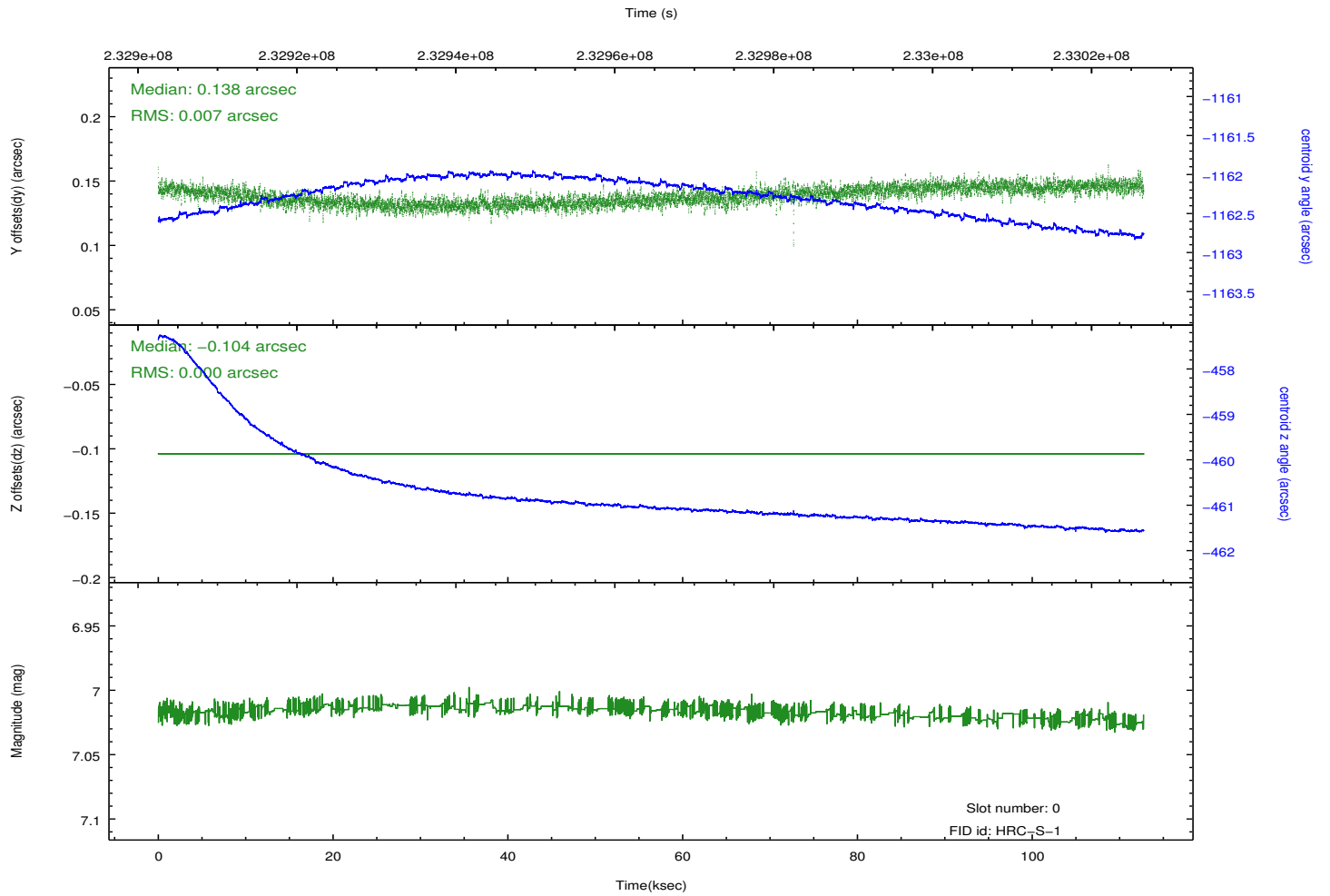
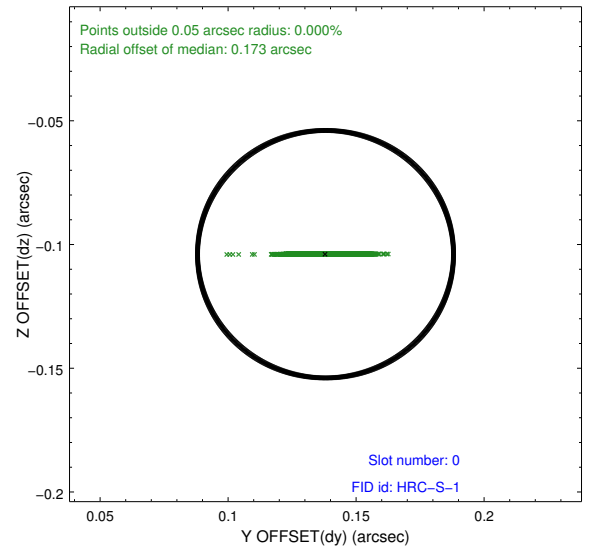
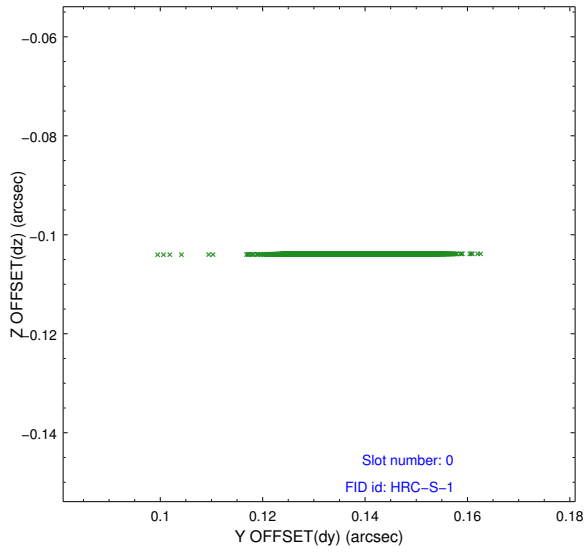


2.4.5 Slot 7

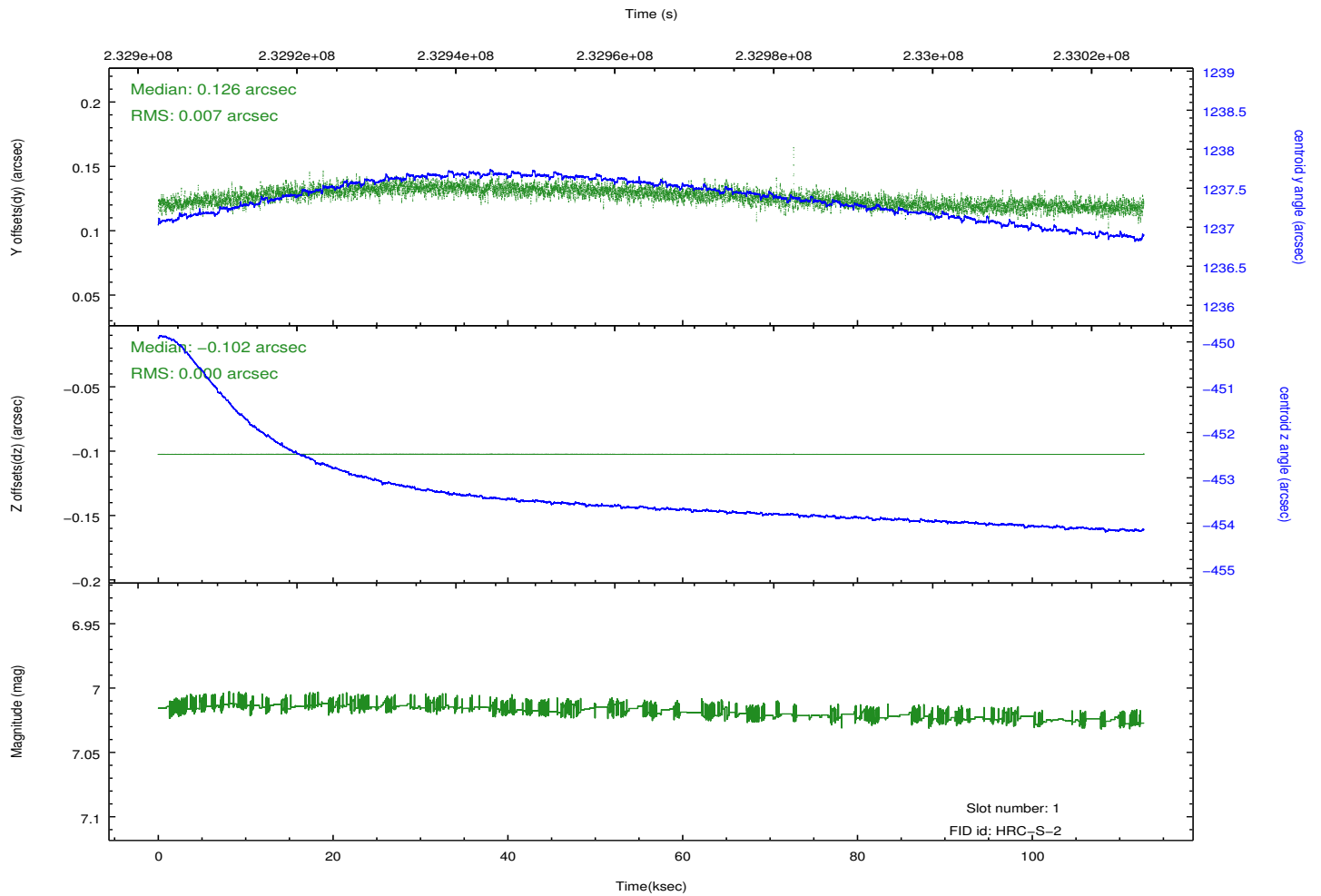
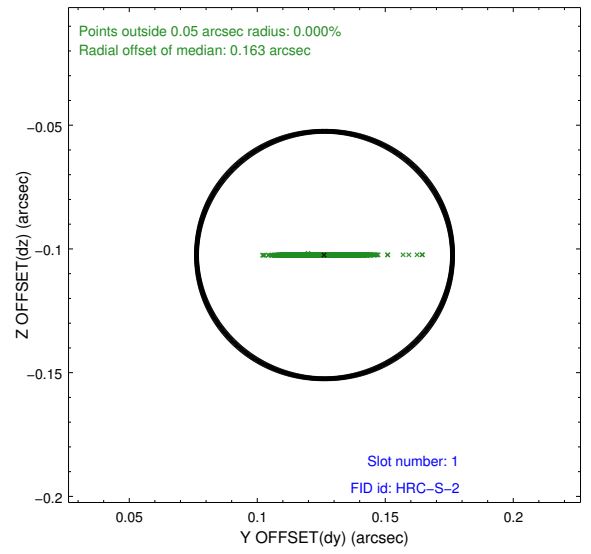
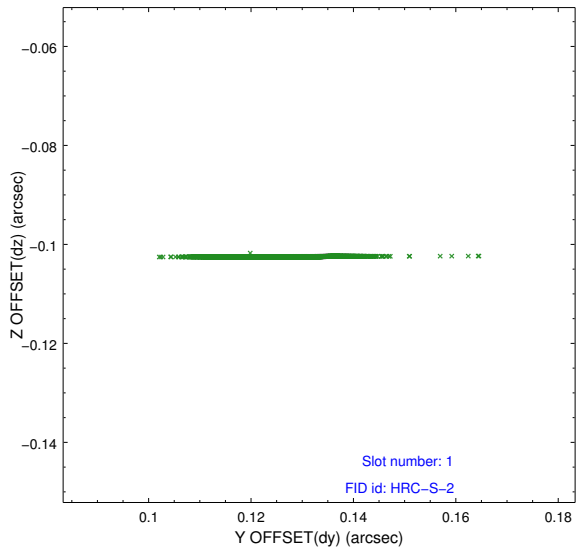


2.5 FID Slots

2.5.1 Slot 0

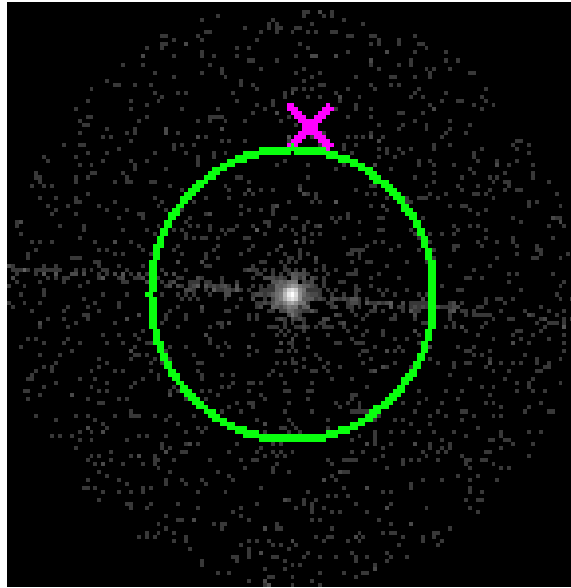


2.5.2 Slot 1

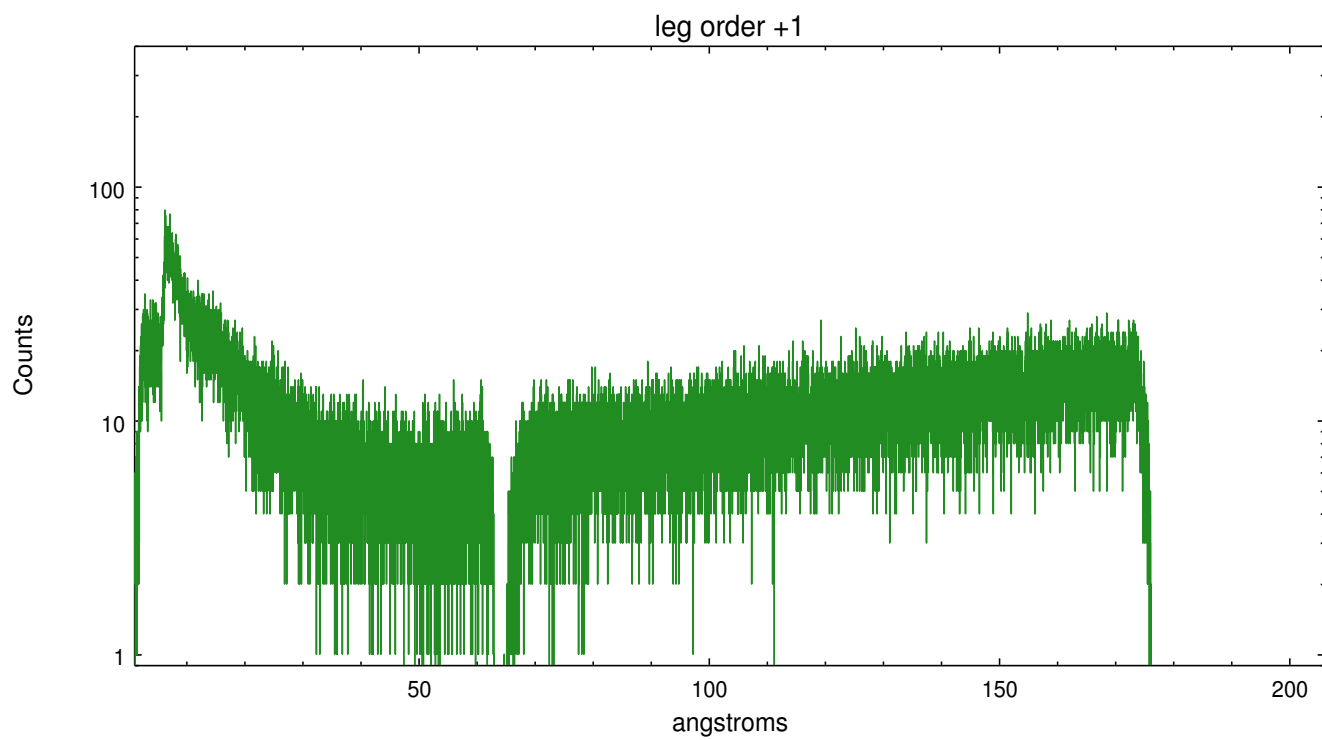
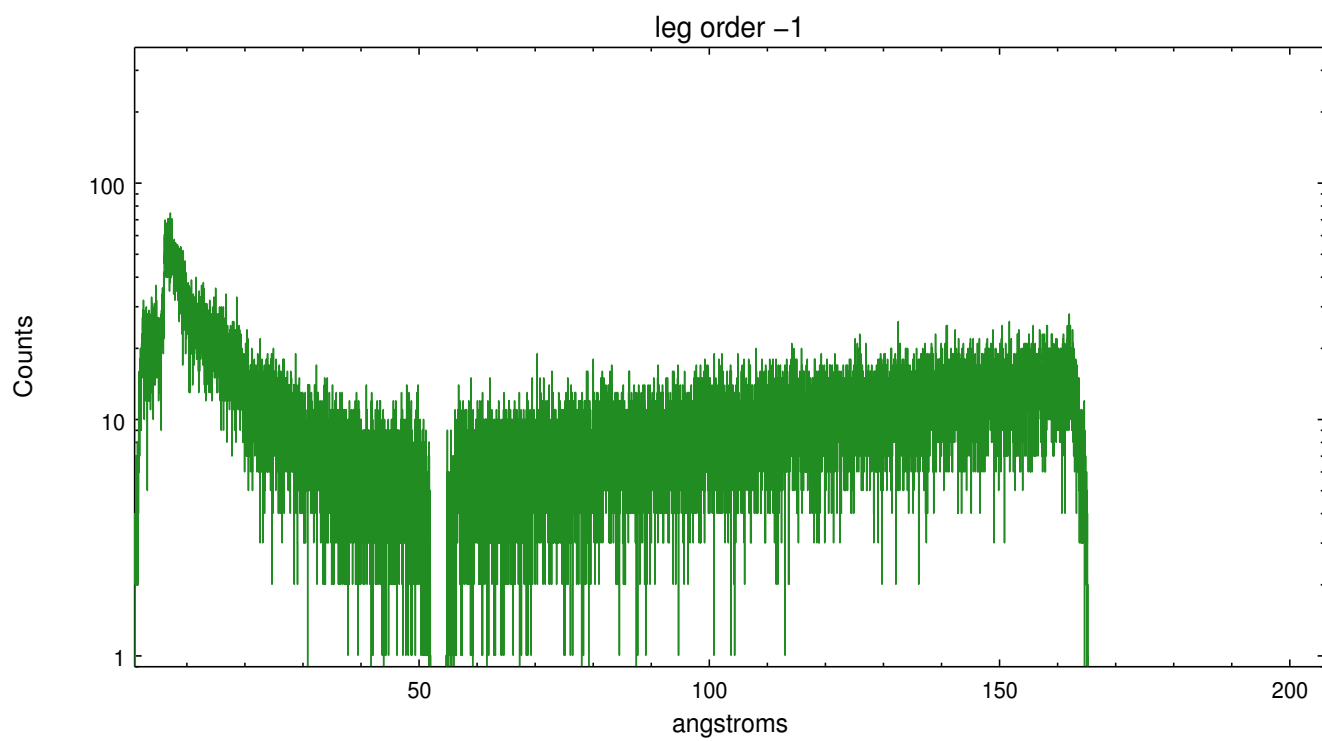


3 Gratings

3.1 LETG Arm



LETG Zero Order



A Summary

A.1 Status

V&V Scientist	Joy Nichols
V&V Date (YYYY-MM-DD)	2013.01.24
V&V Edition	1
V&V Disposition and Status	OK
V&V Charge Time	112.2674

A.2 Comments

The fid light star in slot 2 was removed from the aspect solution due to poor data quality. The aspect solution is improved by the removal of this fid light from the solution.