

V&V Reference Report

L2 ASCDS Version : 8.5.1.1

Observation 59579 - L2 Version 3
Chandra X-Ray Center

L2 Processing Date : Dec 25 2012

Contents

1	Front	2
2	OBI	3
2.1	OBI	3
2.1.1	Images	3
2.1.2	Bias	3
2.1.3	Parameters	4
2.1.4	Events	4
2.2	Compared Parameters	5
2.3	Star Slots	6
2.4	FID Slots	6
A	Summary	7
A.1	Status	7
A.2	Comments	7

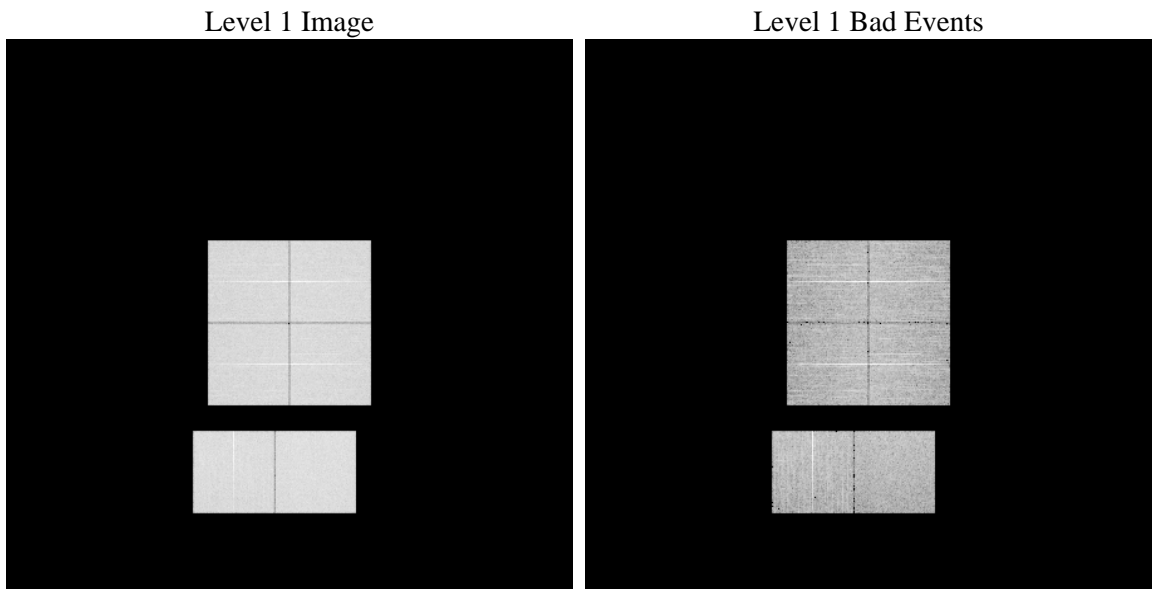
1 Front

seq_num	 	Sequence number
obs_id	59579	Observation id
title	ACIS-012367 diagnostics	Proposal title
observer	CHANDRA engineering request/realtime commanding	Principal investig
object	 	Source name
dtycle	0	
cycle	P	events from which exps? Prim/Second/Both
ra_targ	0.0	Observer's specified target RA [deg]
dec_targ	0.0	Observer's specified target Dec [deg]
ra_nom	296.52483815219	Nominal RA [deg]
dec_nom	-49.976254229797	Nominal Dec [deg]
roll_nom	23.089019820561	Nominal Roll [deg]
revision	3	Processing version of data
ontime	8277.1363014579	Sum of GTIs [s]
livetime	8172.3262177157	Livetime [s]
ontime0	7651.5867735147	Sum of GTIs [s]
ontime1	7939.9926402867	Sum of GTIs [s]
ontime2	7528.3473933935	Sum of GTIs [s]
ontime3	7716.8441371322	Sum of GTIs [s]
ontime6	8114.9231970906	Sum of GTIs [s]
ontime7	8277.1363014579	Sum of GTIs [s]
l2events	1075352	Number of level 2 events

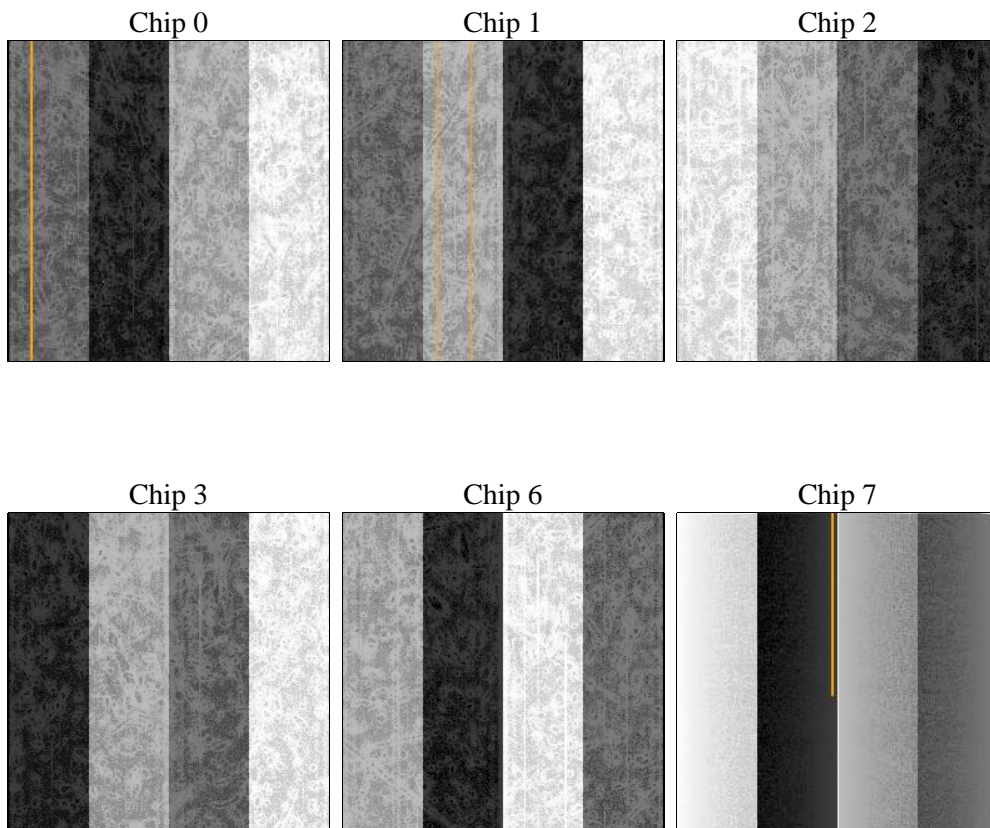
2 OBI

2.1 OBI

2.1.1 Images



2.1.2 Bias



2.1.3 Parameters

obi_num	0	Obi number	sched_exp_time	0.0	[s] Scheduled observation exposure time
ascdsver	8.5.1.1	Processing system revision	ontime	8277.1363014579	Sum of GTIs [s]
caldsver	4.5.5	 	ontime0	7651.5867735147	Sum of GTIs [s]
date	2012-12-26T00:17:53	Date and time of file creation	ontime1	7939.9926402867	Sum of GTIs [s]
revision	3	Processing version of data	ontime2	7528.3473933935	Sum of GTIs [s]
			ontime3	7716.8441371322	Sum of GTIs [s]
			ontime6	8114.9231970906	Sum of GTIs [s]
			ontime7	8277.1363014579	Sum of GTIs [s]
			l1events	1486855	Number of level 1 events

2.1.4 Events

	ccd 0	ccd 1	ccd 2	ccd 3	ccd 6	ccd 7		ccd 0	ccd 1	ccd 2	ccd 3	ccd 6	ccd 7
level 1 events	233732	245350	233437	241315	260024	272997	grade 0 events	97001	100379	98665	101025	105466	50149
rejected events	57212	60868	57755	61590	64337	54378		41%	40%	42%	41%	40%	18%
rejected %	24%	24%	24%	25%	24%	19%	grade 1 events	570	552	670	693	541	189
								0%	0%	0%	0%	0%	0%
							grade 2 events	30926	33331	28934	30237	33720	47772
								13%	13%	12%	12%	12%	17%
							grade 3 events	11428	11603	11633	11611	12153	21312
								4%	4%	4%	4%	4%	7%
							grade 4 events	11364	11754	11631	11998	12170	21012
								4%	4%	4%	4%	4%	7%
							grade 5 events	3445	3582	3190	3607	3809	9350
								1%	1%	1%	1%	1%	3%
							grade 6 events	25801	27415	24819	24854	32178	78374
								11%	11%	10%	10%	12%	28%
							grade 7 events	53197	56734	53895	57290	59987	44839
								22%	23%	23%	23%	23%	16%

2.2 Compared Parameters

Parameter	Planned	Actual	Parameter	Planned	Actual
Instrument	ACIS	ACIS	Obspar format version number	7	7
Detector	ACIS-012367	ACIS-012367	Obspar file type	PREDICTED	ACTUAL
Grating	NONE	NONE	Obspar update status	NONE	UPDATED
Data mode	FAINT	FAINT	On-chip summing requested	N	N
Observation mode	SECONDARY	SECONDARY	Subarray requested	NONE	NONE
[deg] Pointing RA	0	296.5248381521902	Alternating exposures requested	N	N
[deg] Pointing Dec	0	-49.97625422979689	[s] Primary exposure time	3.2	3.2
[deg] Pointing Roll	0.0	23.08901982056127			
[mm] SIM focus pos	-0.782348	-0.6828225247311905			
[mm] SIM defocus	0	0.8505141146731063			
[mm] SIM translation stage pos	-233.592463	250.466033080201			
[mm] SIM translation stage offset	0	-0.01005468664627074			
[s] Observation start time (MET)	236957495.664993	236957494.64			
Observation start date	2005-07-05T13:31:36	2005-07-05T13:31:34			
[s] Observation end time (MET)	236969244.215528	236969243.19053			
Observation end date	2005-07-05T16:47:24	2005-07-05T16:47:23			
Read mode	TIMED	TIMED			

2.3 Star Slots

2.4 FID Slots

A Summary

A.1 Status

V&V Scientist	Beth Sundheim
V&V Date (YYYY-MM-DD)	2013.01.14
V&V Edition	1
V&V Disposition and Status	OK
V&V Charge Time	8.2771363014579

A.2 Comments