

V&V Reference Report

L2 ASCDS Version : 7.6.7.1

Observation 60019 - L2 Version 001
Chandra X-Ray Center

L2 Processing Date : Apr 17 2006

Contents

1	Front	2
2	OBI	3
2.1	OBI	3
2.1.1	Images	3
2.1.2	Bias	3
2.1.3	Parameters	4
2.1.4	Events	4
2.2	Compared Parameters	5
2.3	Aspect	6
2.4	Star Slots	8
2.5	FID Slots	8
A	Summary	9
A.1	Status	9
A.2	Comments	9

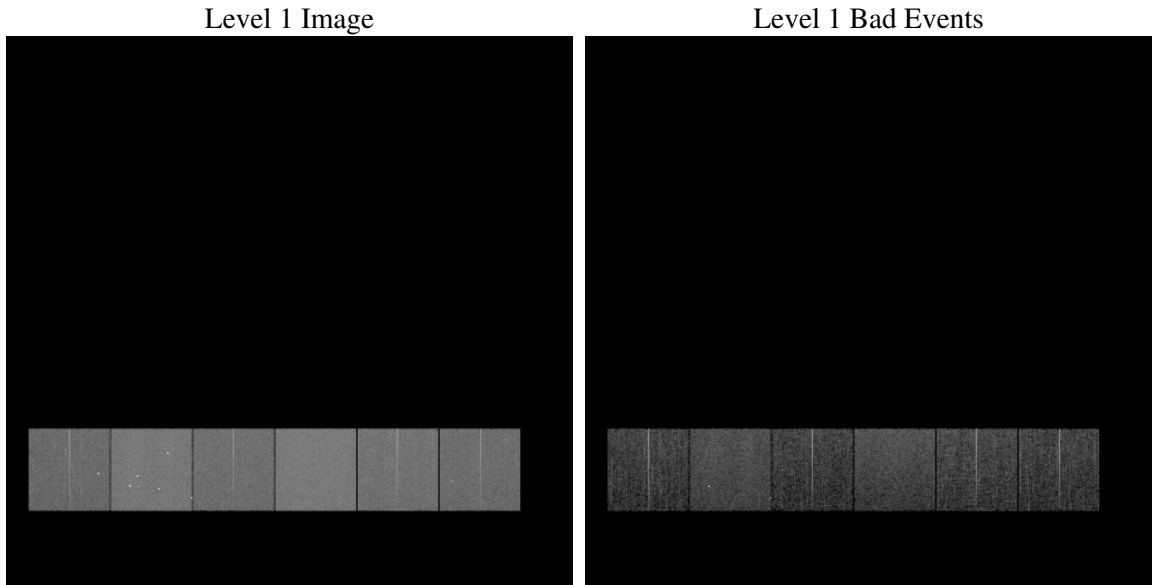
1 Front

seq_num	
obs_id	60019
title	ACIS-456789 diagnostics
observer	CHANDRA engineering request/realtime commanding
object	
dtcycle	0
cycle	P
ra_targ	0.0
dec_targ	0.0
ra_nom	11.972325591145
dec_nom	14.990001962385
roll_nom	167.77755522945
revision	2
ontime	8278.3999691606
livetime	8173.573884097
ontime4	5660.979408294
ontime5	8278.3999691606
ontime6	6211.9040835798
ontime7	8278.3999691606
ontime8	6401.8760088682
ontime9	5949.261782676
l2events	1089125

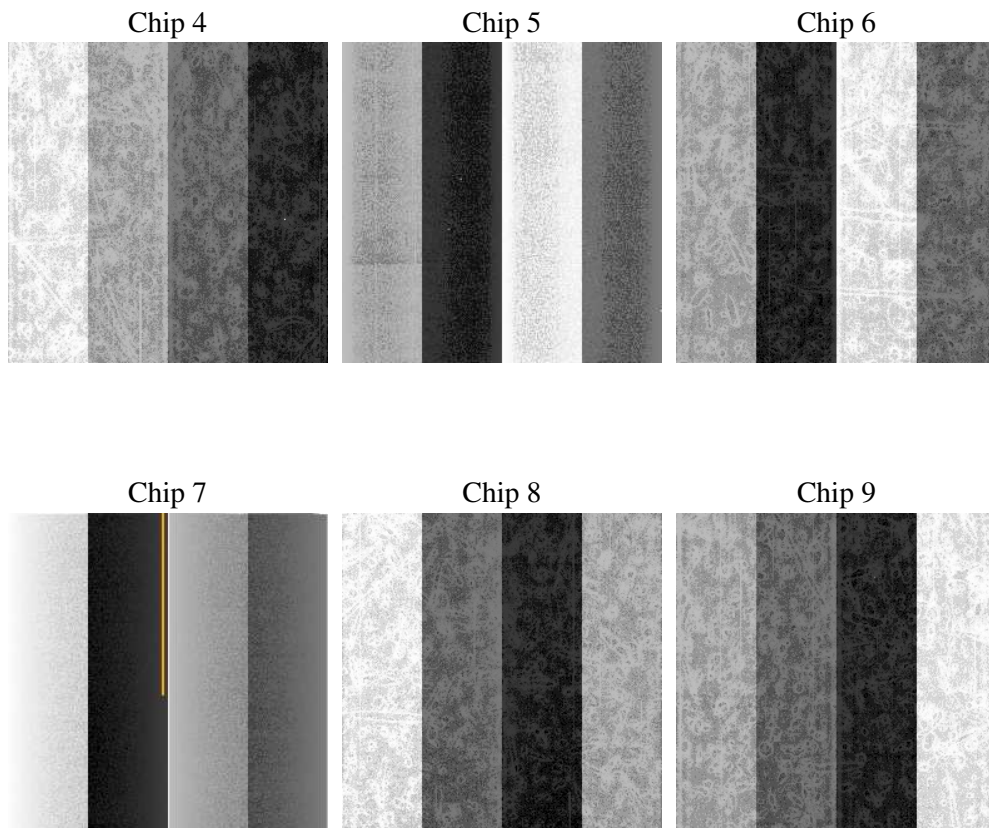
2 OBI

2.1 OBI

2.1.1 Images



2.1.2 Bias



2.1.3 Parameters

obi_num	0
ascdsver	7.6.7.1
caldbver	3.2.1
date	2006-04-17T04:32:58
revision	2

sched_exp_time	0.0
ontime	8280.7664698362
ontime4	5662.0596258938
ontime5	8280.7664698362
ontime6	6213.0253411829
ontime7	8280.7664698362
ontime8	6404.2425095439
ontime9	5950.506160289
l1events	1497858

2.1.4 Events

	ccd 4	ccd 5	ccd 6	ccd 7	ccd 8	ccd 9
level 1 events	202820	299740	226945	307248	246433	214672
rejected events	49151	70158	46769	63378	55290	48385
rejected %	24%	23%	20%	20%	22%	22%

	ccd 4	ccd 5	ccd 6	ccd 7	ccd 8	ccd 9
grade 0 events	90147	29118	97855	40516	103559	92016
	44%	9%	43%	13%	42%	42%
grade 1 events	697	142	496	113	573	557
	0%	0%	0%	0%	0%	0%
grade 2 events	23624	104106	31519	74788	33390	28117
	11%	34%	13%	24%	13%	13%
grade 3 events	10368	6749	11113	16898	12514	10701
	5%	2%	4%	5%	5%	4%
grade 4 events	10057	6207	11226	16627	12641	10790
	4%	2%	4%	5%	5%	5%
grade 5 events	2735	6652	3100	7264	3789	3197
	1%	2%	1%	2%	1%	1%
grade 6 events	19473	83402	28463	95041	29039	24663
	9%	27%	12%	30%	11%	11%
grade 7 events	45719	63364	43173	56001	50928	44631
	22%	21%	19%	18%	20%	20%

2.2 Compared Parameters

Parameter	Planned	Actual	Parameter	Planned	Actual
Instrument	ACIS	ACIS	Obspar format version number	6	6
Detector	ACIS-456789	ACIS-456789	Obspar file type	PREDICTED	ACTUAL
Grating	NONE	NONE	Obspar update status	NONE	UPDATED
Data mode	FAINT	FAINT	On-chip summing requested	N	N
Observation mode	SECONDARY	SECONDARY	Subarray requested	NONE	NONE
Pointing RA	0	11.97232559114533	Alternating exposures requested	N	N
Pointing Dec	0	14.99000196238452	Primary exposure time	3.2	3.2
Pointing Roll	0.0	167.7775552294474			
SIM focus pos (mm)	-0.684267	-0.6828225247311905			
SIM defocus (mm)	0	0.8505141146731063			
SIM translation stage pos (mm)	-190.132523	250.466033080201			
SIM translation stage offset (mm)	0	-0.01005468664627074			
Observation start time	213183091.089554	213183090.06453			
Observation start date	2004-10-03T09:31:31	2004-10-03T09:31:30			
Observation end time	213206237.640589	213206236.61557			
Observation end date	2004-10-03T15:57:18	2004-10-03T15:57:16			
Read mode	TIMED	TIMED			

2.3 Aspect

2.4 Star Slots

2.5 FID Slots

A Summary

A.1 Status

V&V Scientist	Jen Lauer
V&V Date (YYYY-MM-DD)	2006.04.17
V&V Edition	1
V&V Disposition and Status	OK
V&V Charge Time	8.27839996

A.2 Comments

The ACIS focal plane temperature was above the calibration limits for all but the first 2 ksec of the observation.