

V&V Reference Report

L2 ASCDS Version : 8.5

Observation 60119 - L2 Version 3
Chandra X-Ray Center

L2 Processing Date : Dec 6 2012

Contents

1	Front	2
2	OBI	3
2.1	OBI	3
2.1.1	Images	3
2.1.2	Bias	3
2.1.3	Parameters	4
2.1.4	Events	4
2.2	Compared Parameters	5
2.3	Star Slots	6
2.4	FID Slots	6
A	Summary	7
A.1	Status	7
A.2	Comments	7

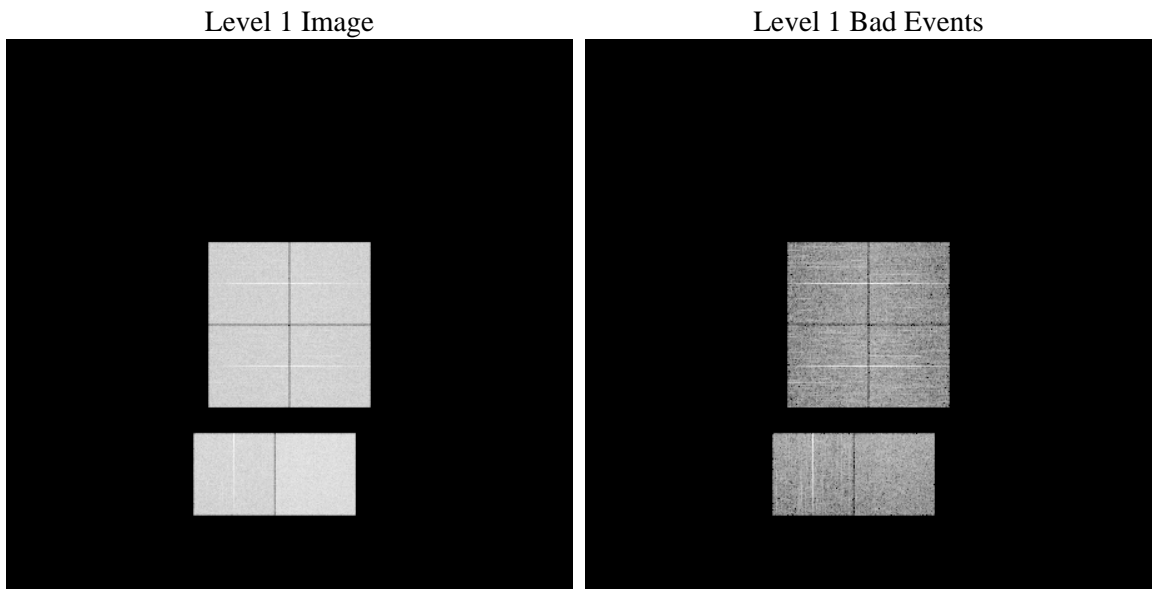
1 Front

seq_num	 	Sequence number
obs_id	60119	Observation id
title	ACIS-012367 diagnostics	Proposal title
observer	CHANDRA engineering request/realtime commanding	Principal investig
object	 	Source name
dtycle	0	
cycle	P	events from which exps? Prim/Second/Both
ra_targ	0.0	Observer's specified target RA [deg]
dec_targ	0.0	Observer's specified target Dec [deg]
ra_nom	327.97782178478	Nominal RA [deg]
dec_nom	-17.978740220119	Nominal Dec [deg]
roll_nom	98.569121842567	Nominal Roll [deg]
revision	3	Processing version of data
ontime	8278.3999691606	Sum of GTIs [s]
livetime	8173.573884097	Livetime [s]
ontime0	6476.4182629287	Sum of GTIs [s]
ontime1	6687.0818183124	Sum of GTIs [s]
ontime2	6246.3086631	Sum of GTIs [s]
ontime3	6451.6399699748	Sum of GTIs [s]
ontime6	6813.4798004627	Sum of GTIs [s]
ontime7	8278.3999691606	Sum of GTIs [s]
l2events	1176968	Number of level 2 events

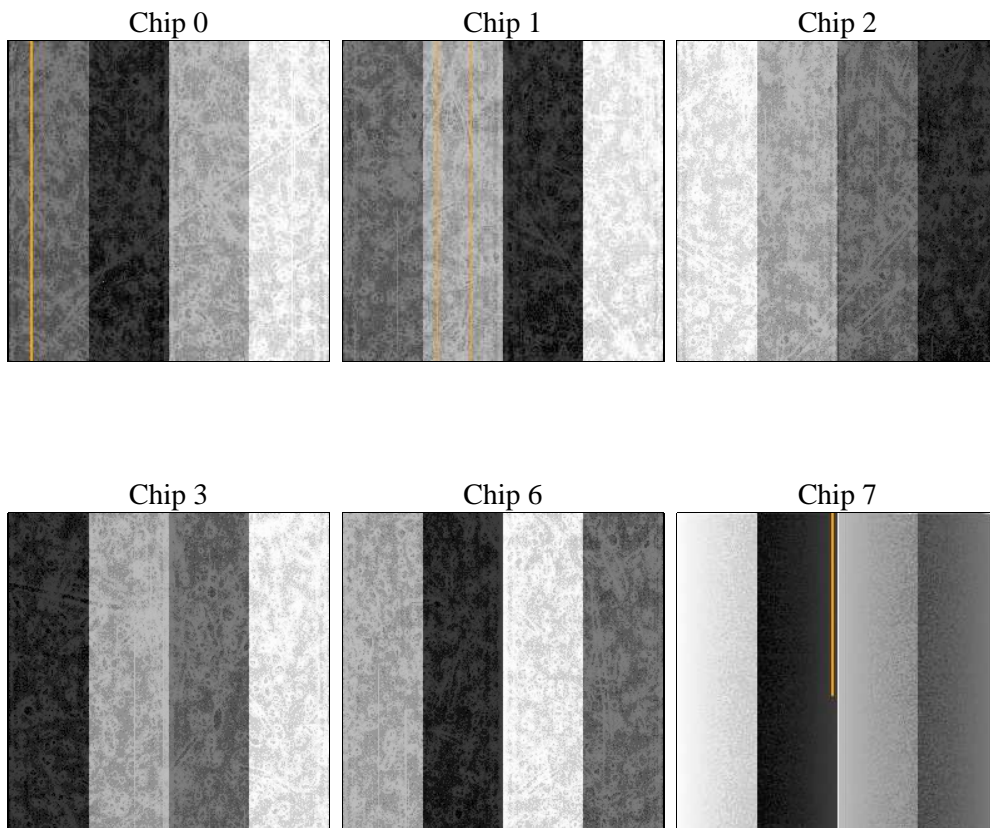
2 OBI

2.1 OBI

2.1.1 Images



2.1.2 Bias



2.1.3 Parameters

obi_num	0	Obi number	sched_exp_time	0.0	[s] Scheduled observation exposure time
ascdsver	8.5	Processing system revision	ontime	8278.3999691606	Sum of GTIs [s]
caldbver	4.5.4	 	ontime0	6476.4182629287	Sum of GTIs [s]
date	2012-12-06T12:58:15	Date and time of file creation	ontime1	6687.0818183124	Sum of GTIs [s]
revision	3	Processing version of data	ontime2	6246.3086631	Sum of GTIs [s]
			ontime3	6451.6399699748	Sum of GTIs [s]
			ontime6	6813.4798004627	Sum of GTIs [s]
			ontime7	8278.3999691606	Sum of GTIs [s]
			l1events	1499027	Number of level 1 events

2.1.4 Events

	ccd 0	ccd 1	ccd 2	ccd 3	ccd 6	ccd 7		ccd 0	ccd 1	ccd 2	ccd 3	ccd 6	ccd 7
level 1 events	230059	237746	227968	234923	257091	311240	grade 0 events	104555	107506	103551	107014	114431	63606
rejected events	40740	41627	43094	44193	47181	46857		45%	45%	45%	45%	44%	20%
rejected %	17%	17%	18%	18%	18%	15%	grade 1 events	620	548	669	630	515	171
								0%	0%	0%	0%	0%	0%
							grade 2 events	33336	35060	30900	32448	36266	58028
								14%	14%	13%	13%	14%	18%
							grade 3 events	12168	12672	12269	12519	13048	26718
								5%	5%	5%	5%	5%	8%
							grade 4 events	12126	12296	12188	12405	13008	26216
								5%	5%	5%	5%	5%	8%
							grade 5 events	2820	2922	2555	2841	3116	8329
								1%	1%	1%	1%	1%	2%
							grade 6 events	27134	28585	25966	26344	33157	89815
								11%	12%	11%	11%	12%	28%
							grade 7 events	37300	38157	39870	40722	43550	38357
								16%	16%	17%	17%	16%	12%

2.2 Compared Parameters

Parameter	Planned	Actual	Parameter	Planned	Actual
Instrument	ACIS	ACIS	Obspar format version number	7	7
Detector	ACIS-012367	ACIS-012367	Obspar file type	PREDICTED	ACTUAL
Grating	NONE	NONE	Obspar update status	NONE	UPDATED
Data mode	FAINT	FAINT	On-chip summing requested	N	N
Observation mode	SECONDARY	SECONDARY	Subarray requested	NONE	NONE
[deg] Pointing RA	0	327.97782178478	Alternating exposures requested	N	N
[deg] Pointing Dec	0	-17.97874022011867	[s] Primary exposure time	3.2	3.2
[deg] Pointing Roll	0.0	98.56912184256743			
[mm] SIM focus pos	-0.782348	-0.6828225247311905			
[mm] SIM defocus	0	0.8505141146731063			
[mm] SIM translation stage pos	-233.592463	250.466033080201			
[mm] SIM translation stage offset	0	-0.01005468664627074			
[s] Observation start time (MET)	207018066.364801	207018065.33979			
Observation start date	2004-07-24T01:01:06	2004-07-24T01:01:05			
[s] Observation end time (MET)	207042071.865868	207042070.84086			
Observation end date	2004-07-24T07:41:12	2004-07-24T07:41:10			
Read mode	TIMED	TIMED			

2.3 Star Slots

2.4 FID Slots

A Summary

A.1 Status

V&V Scientist	Jen Lauer
V&V Date (YYYY-MM-DD)	2012.12.20
V&V Edition	1
V&V Disposition and Status	OK
V&V Charge Time	8.2783999691606

A.2 Comments