

V&V Reference Report

L2 ASCDS Version : 7.6.7.2

Observation 60409 - L2 Version 001
Chandra X-Ray Center

L2 Processing Date : Jun 7 2006

Contents

1	Front	2
2	OBI	3
2.1	OBI	3
2.1.1	Images	3
2.1.2	Bias	3
2.1.3	Parameters	4
2.1.4	Events	4
2.2	Compared Parameters	5
2.3	Aspect	6
2.4	Star Slots	8
2.5	FID Slots	8
A	Summary	9
A.1	Status	9
A.2	Comments	9

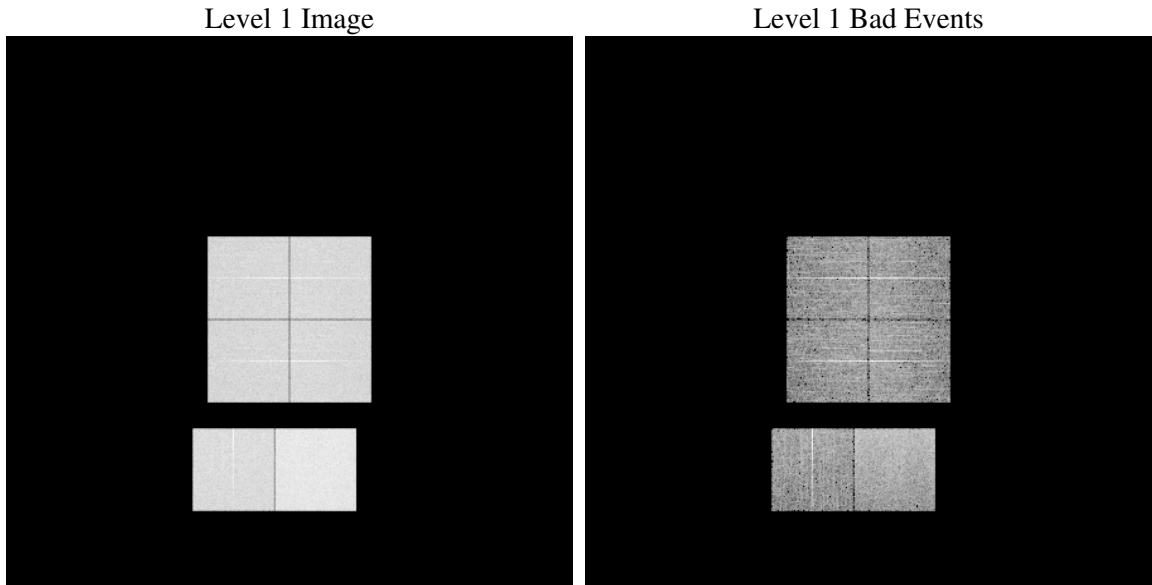
1 Front

seq_num	
obs_id	60409
title	ACIS-012367 diagnostics
observer	CHANDRA engineering request/realtime commanding
object	
dtcycle	0
cycle	P
ra_targ	0.0
dec_targ	0.0
ra_nom	96.527799918097
dec_nom	3.9930018618135
roll_nom	312.89917828339
revision	2
ontime	8466.146438092
livetime	8358.9429941915
ontime0	5853.9591400027
ontime1	6058.1818752587
ontime2	5740.6073586047
ontime3	5850.6365367472
ontime6	6262.4461600482
ontime7	8466.146438092
l2events	1238269

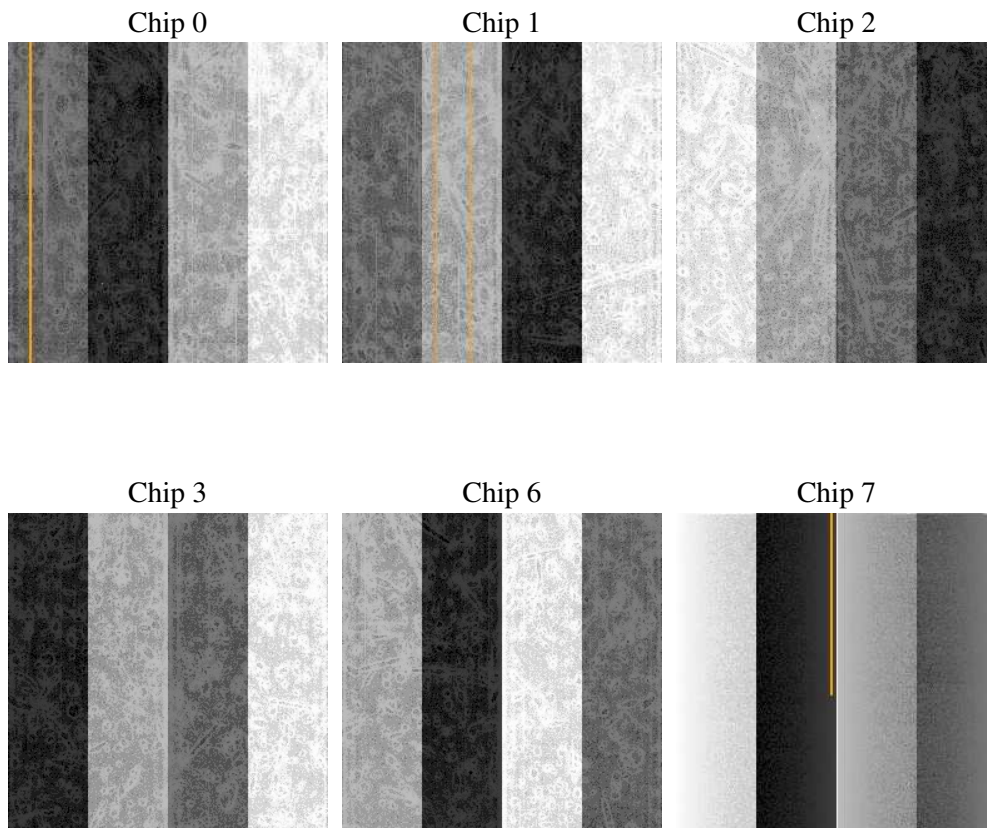
2 OBI

2.1 OBI

2.1.1 Images



2.1.2 Bias



2.1.3 Parameters

obi_num	1
ascdsver	7.6.7.2
caldbver	3.2.2
date	2006-06-07T08:24:16
revision	2

sched_exp_time	0.0
ontime	8468.7508589625
ontime0	5856.52252087
ontime1	6060.7042161226
ontime2	5743.0886594653
ontime3	5853.2819976211
ontime6	6264.8864209354
ontime7	8468.7508589625
l1events	1536042

2.1.4 Events

	ccd 0	ccd 1	ccd 2	ccd 3	ccd 6	ccd 7
level 1 events	231098	237378	228507	235834	258016	345209
rejected events	35815	35556	35508	37901	38194	55363
rejected %	15%	14%	15%	16%	14%	16%

	ccd 0	ccd 1	ccd 2	ccd 3	ccd 6	ccd 7
grade 0 events	108209	111059	108064	110939	119737	51267
	46%	46%	47%	47%	46%	14%
grade 1 events	550	489	642	610	565	130
	0%	0%	0%	0%	0%	0%
grade 2 events	34114	35816	32453	34189	37833	87777
	14%	15%	14%	14%	14%	25%
grade 3 events	12490	12814	12538	13076	13630	21263
	5%	5%	5%	5%	5%	6%
grade 4 events	12417	12600	12521	12668	13495	20838
	5%	5%	5%	5%	5%	6%
grade 5 events	2428	2572	2256	2545	2711	6899
	1%	1%	0%	1%	1%	1%
grade 6 events	28150	29646	27533	27158	35243	108818
	12%	12%	12%	11%	13%	31%
grade 7 events	32740	32382	32500	34649	34802	48217
	14%	13%	14%	14%	13%	13%

2.2 Compared Parameters

Parameter	Planned	Actual	Parameter	Planned	Actual
Instrument	ACIS	ACIS	Obspar format version number	6	6
Detector	ACIS-012367	ACIS-012367	Obspar file type	PREDICTED	ACTUAL
Grating	NONE	NONE	Obspar update status	NONE	UPDATED
Data mode	FAINT	FAINT	On-chip summing requested	N	N
Observation mode	SECONDARY	SECONDARY	Subarray requested	NONE	NONE
Pointing RA	0	96.52779991809741	Alternating exposures requested	N	N
Pointing Dec	0	3.993001861813529	Primary exposure time	0.000000	3.2
Pointing Roll	0.0	312.8991782833909			
SIM focus pos (mm)	-0.782348	-0.7809083437167272			
SIM defocus (mm)	0	0.7524282956875696			
SIM translation stage pos (mm)	-233.592463	250.466033080201			
SIM translation stage offset (mm)	0	-0.01005468664627074			
Observation start time	190568617.590296	190568616.56558			
Observation start date	2004-01-15T15:43:38	2004-01-15T15:43:36			
Observation end time	190592262.291327	190592261.26661			
Observation end date	2004-01-15T22:17:42	2004-01-15T22:17:41			
Read mode	TIMED	TIMED			

2.3 Aspect

2.4 Star Slots

2.5 FID Slots

A Summary

A.1 Status

V&V Scientist	Jen Lauer
V&V Date (YYYY-MM-DD)	2006.06.07
V&V Edition	1
V&V Disposition and Status	OK
V&V Charge Time	8.46614643

A.2 Comments