

# V&V Reference Report

## L2 ASCDS Version : 7.6.8

Observation 60449 - L2 Version 001  
Chandra X-Ray Center

L2 Processing Date : Jun 23 2006

## Contents

<b>1</b>	<b>Front</b>	<b>2</b>
<b>2</b>	<b>OBI</b>	<b>3</b>
2.1	OBI . . . . .	3
2.1.1	Images . . . . .	3
2.1.2	Bias . . . . .	3
2.1.3	Parameters . . . . .	4
2.1.4	Events . . . . .	4
2.2	Compared Parameters . . . . .	5
2.3	Aspect . . . . .	6
2.4	Star Slots . . . . .	8
2.5	FID Slots . . . . .	8
<b>A</b>	<b>Summary</b>	<b>9</b>
A.1	Status . . . . .	9
A.2	Comments . . . . .	9

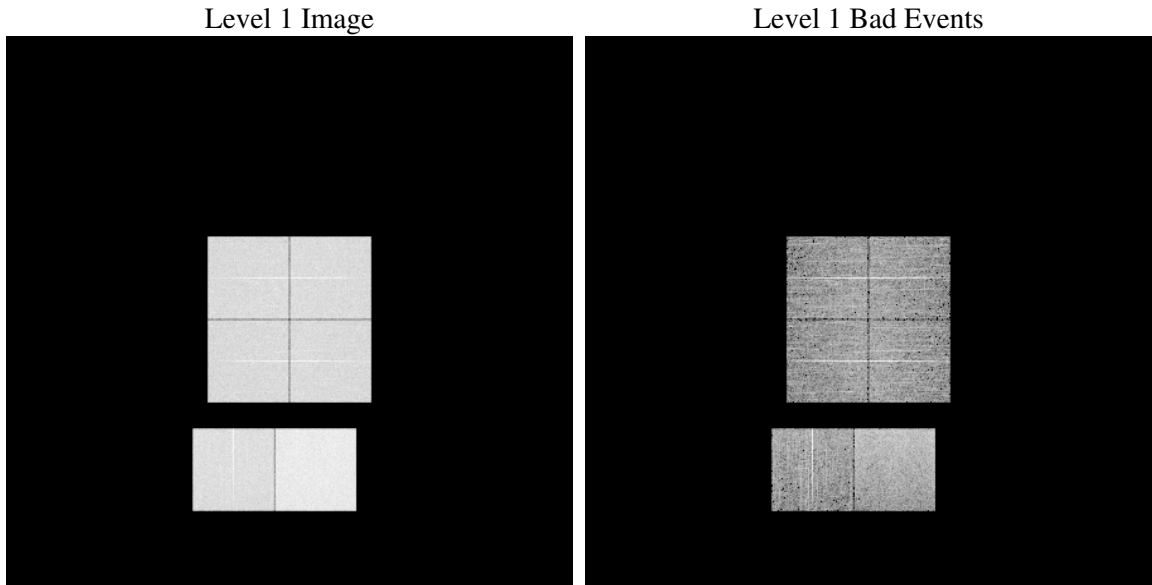
# 1 Front

seq_num	&#160
obs_id	60449
title	ACIS-012367 diagnostics
observer	CHANDRA engineering request/realtime commanding
object	&#160
dtcycle	0
cycle	P
ra_targ	0.0
dec_targ	0.0
ra_nom	211.00323143706
dec_nom	26.028441593822
roll_nom	51.309769325733
revision	2
ontime	8467.1999684572
livetime	8359.9831841209
ontime0	5890.6333122253
ontime1	5965.1751407683
ontime2	5663.7655052543
ontime3	5702.6576662064
ontime6	6114.26007092
ontime7	8467.1999684572
l2events	1244738

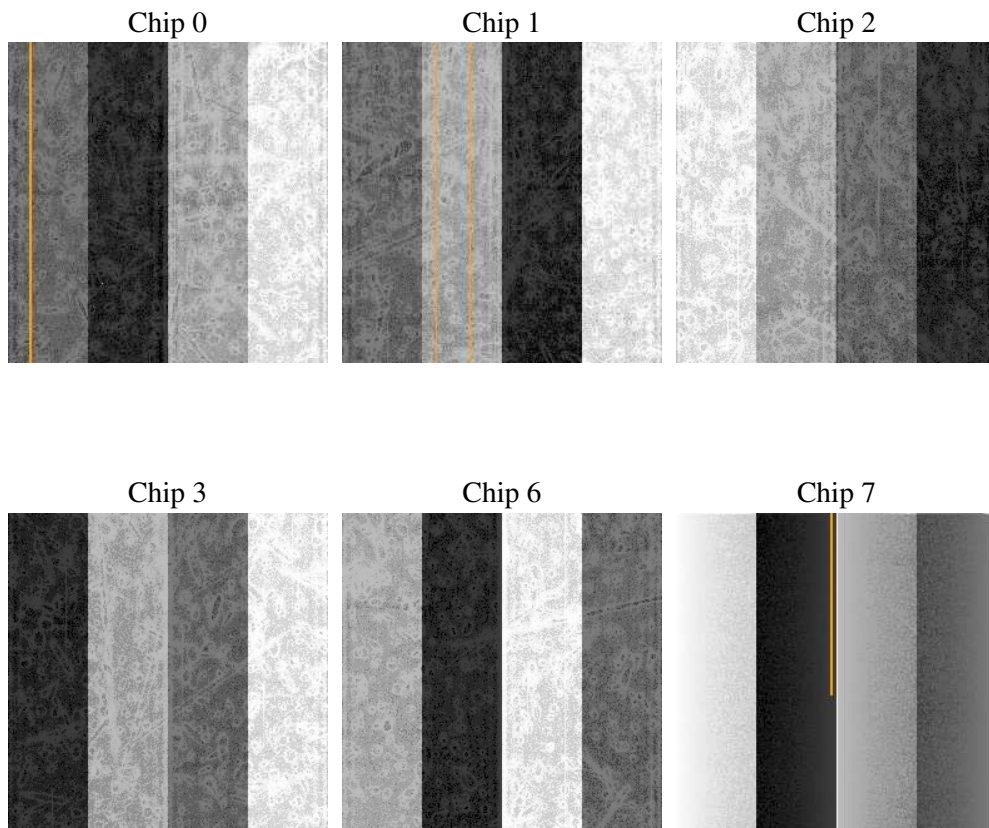
## 2 OBI

### 2.1 OBI

#### 2.1.1 Images



#### 2.1.2 Bias



### 2.1.3 Parameters

obi_num	0
ascdsver	7.6.8
caldbver	3.2.2
date	2006-06-24T00:04:33
revision	2

sched_exp_time	0.0
ontime	8468.7320278883
ontime0	5892.1653716564
ontime1	5966.7072001994
ontime2	5665.2975646853
ontime3	5704.1897256374
ontime6	6115.7921303511
ontime7	8468.7320278883
l1events	1537210

### 2.1.4 Events

	ccd 0	ccd 1	ccd 2	ccd 3	ccd 6	ccd 7
level 1 events	234236	236856	228528	233069	255918	348603
rejected events	35083	34567	34175	37010	37992	53835
rejected %	14%	14%	14%	15%	14%	15%

	ccd 0	ccd 1	ccd 2	ccd 3	ccd 6	ccd 7
grade 0 events	110137	110966	108790	110022	118834	52874
	47%	46%	47%	47%	46%	15%
grade 1 events	551	512	578	609	535	122
	0%	0%	0%	0%	0%	0%
grade 2 events	34765	36054	33105	33630	37591	89257
	14%	15%	14%	14%	14%	25%
grade 3 events	12667	12793	12620	12707	13514	21435
	5%	5%	5%	5%	5%	6%
grade 4 events	12876	12800	12494	12833	13436	21332
	5%	5%	5%	5%	5%	6%
grade 5 events	2323	2489	2333	2472	2699	6934
	0%	1%	1%	1%	1%	1%
grade 6 events	28708	29676	27344	26867	34551	109870
	12%	12%	11%	11%	13%	31%
grade 7 events	32209	31566	31264	33929	34758	46779
	13%	13%	13%	14%	13%	13%

## 2.2 Compared Parameters

Parameter	Planned	Actual	Parameter	Planned	Actual
Instrument	ACIS	ACIS	Obspar format version number	6	6
Detector	ACIS-012367	ACIS-012367	Obspar file type	PREDICTED	ACTUAL
Grating	NONE	NONE	Obspar update status	NONE	UPDATED
Data mode	FAINT	FAINT	On-chip summing requested	N	N
Observation mode	SECONDARY	SECONDARY	Subarray requested	NONE	NONE
Pointing RA	0	211.0032314370569	Alternating exposures requested	N	N
Pointing Dec	0	26.0284415938215	Primary exposure time	0.000000	3.2
Pointing Roll	0.0	51.30976932573265			
SIM focus pos (mm)	-0.782348	-0.7809083437167272			
SIM defocus (mm)	0	0.7524282956875696			
SIM translation stage pos (mm)	-233.592463	250.466033080201			
SIM translation stage offset (mm)	0	-0.01005468664627074			
Observation start time	188055165.780936	188055164.75623			
Observation start date	2003-12-17T13:32:46	2003-12-17T13:32:44			
Observation end time	188077949.481926	188077948.45722			
Observation end date	2003-12-17T19:52:29	2003-12-17T19:52:28			
Read mode	TIMED	TIMED			

## 2.3 Aspect



**2.4 Star Slots**

**2.5 FID Slots**

# A Summary

## A.1 Status

V&V Scientist	Jen Lauer
V&V Date (YYYY-MM-DD)	2006.06.26
V&V Edition	1
V&V Disposition and Status	OK
V&V Charge Time	8.46719996

## A.2 Comments