

V&V Reference Report

L2 ASCDS Version : 8.4.5

Observation 60529 - L2 Version 3
Chandra X-Ray Center

L2 Processing Date : Nov 5 2012

Contents

1	Front	2
2	OBI	3
2.1	OBI	3
2.1.1	Images	3
2.1.2	Bias	3
2.1.3	Parameters	4
2.1.4	Events	4
2.2	Compared Parameters	5
2.3	Star Slots	6
2.4	FID Slots	6
A	Summary	7
A.1	Status	7
A.2	Comments	7

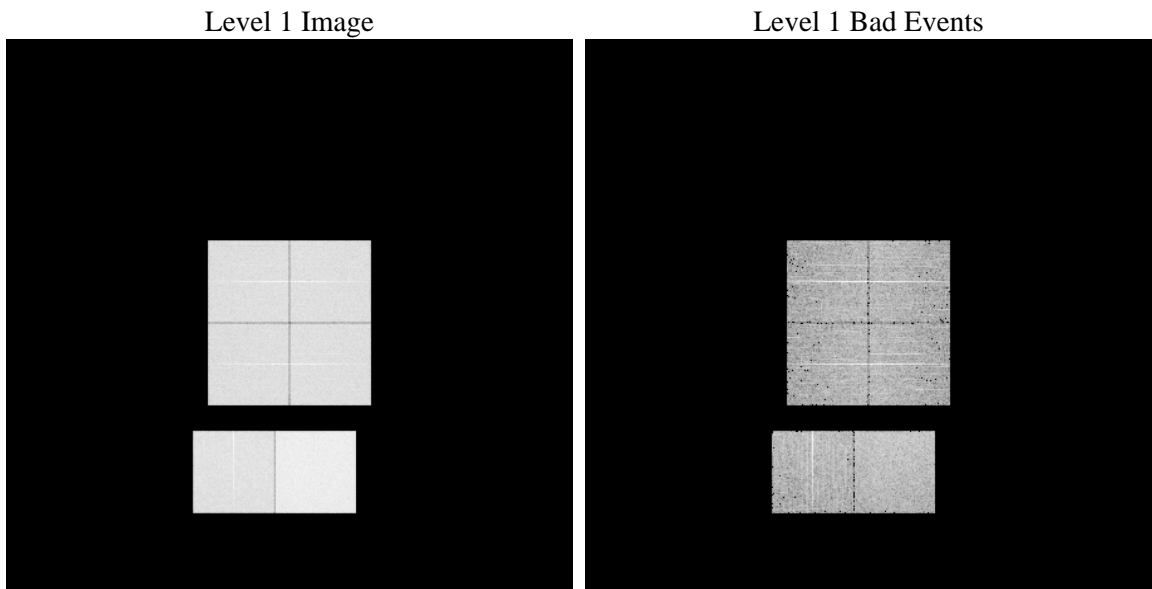
1 Front

seq_num	 	Sequence number
obs_id	60529	Observation id
title	ACIS-012367 diagnostics	Proposal title
observer	CHANDRA engineering request/realtime commanding	Principal investig
object	 	Source name
dtycycle	0	
cycle	P	events from which exps? Prim/Second/Both
ra_targ	0.0	Observer's specified target RA [deg]
dec_targ	0.0	Observer's specified target Dec [deg]
ra_nom	166.01910031756	Nominal RA [deg]
dec_nom	49.02572780438	Nominal Dec [deg]
roll_nom	31.142389312128	Nominal Roll [deg]
revision	3	Processing version of data
ontime	8462.2457835376	Sum of GTIs [s]
livetime	8355.0917320738	Livetime [s]
ontime0	5363.8861483932	Sum of GTIs [s]
ontime1	5348.3222027421	Sum of GTIs [s]
ontime2	5144.1008057296	Sum of GTIs [s]
ontime3	5312.0311136246	Sum of GTIs [s]
ontime6	5652.8912351727	Sum of GTIs [s]
ontime7	8462.2457835376	Sum of GTIs [s]
l2events	1257359	Number of level 2 events

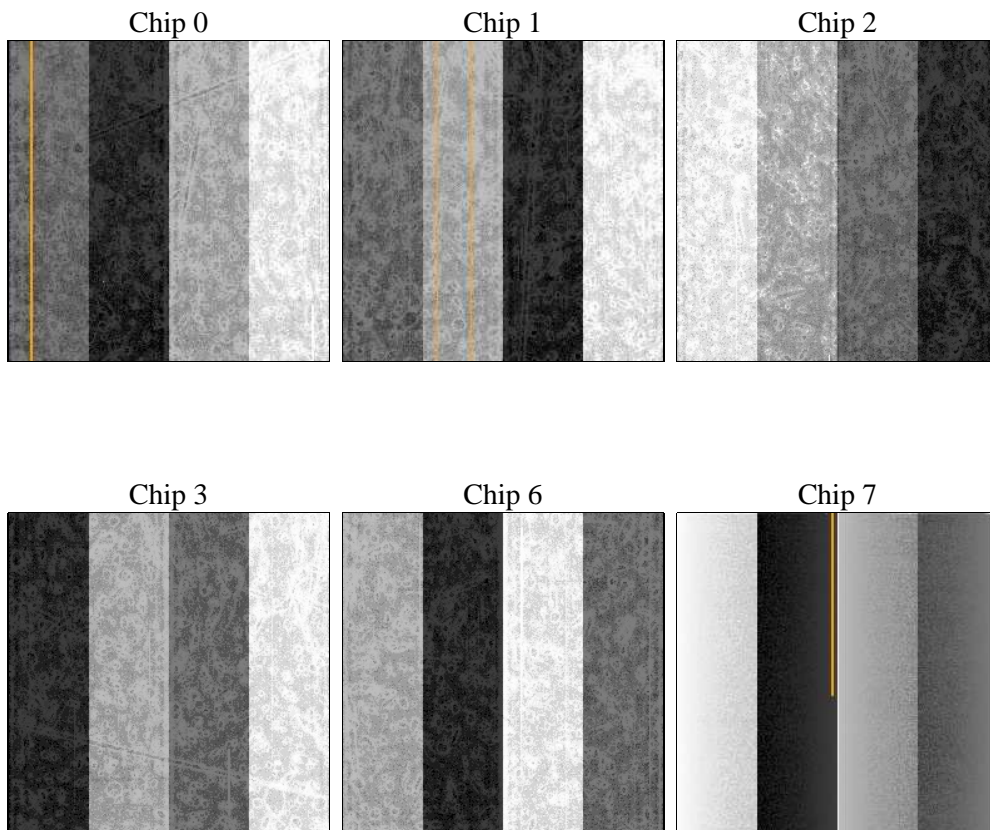
2 OBI

2.1 OBI

2.1.1 Images



2.1.2 Bias



2.1.3 Parameters

obi_num	0	Obi number	sched_exp_time	0.0	[s] Scheduled observation exposure time
ascdsver	8.4.5	Processing system revision	ontime	8462.2457835376	Sum of GTIs [s]
caldbver	4.5.2	 	ontime0	5363.8861483932	Sum of GTIs [s]
date	2012-11-05T07:38:55	Date and time of file creation	ontime1	5348.3222027421	Sum of GTIs [s]
revision	3	Processing version of data	ontime2	5144.1008057296	Sum of GTIs [s]
			ontime3	5312.0311136246	Sum of GTIs [s]
			ontime6	5652.8912351727	Sum of GTIs [s]
			ontime7	8462.2457835376	Sum of GTIs [s]
			l1events	1538364	Number of level 1 events

2.1.4 Events

	ccd 0	ccd 1	ccd 2	ccd 3	ccd 6	ccd 7		ccd 0	ccd 1	ccd 2	ccd 3	ccd 6	ccd 7
level 1 events	228774	230679	222906	230669	254254	371082	grade 0 events	107440	107098	106567	109558	117149	80759
rejected events	33908	35246	33876	35108	38429	45209		46%	46%	47%	47%	46%	21%
rejected %	14%	15%	15%	15%	15%	12%	grade 1 events	587	551	671	640	536	227
								0%	0%	0%	0%	0%	0%
							grade 2 events	34043	34955	31642	33362	37353	71507
								14%	15%	14%	14%	14%	19%
							grade 3 events	12650	12319	12135	12670	13318	32741
								5%	5%	5%	5%	5%	8%
							grade 4 events	12446	12505	12226	12886	13252	31985
								5%	5%	5%	5%	5%	8%
							grade 5 events	2282	2498	2195	2434	2644	8453
								0%	1%	0%	1%	1%	2%
							grade 6 events	28287	28674	26579	27085	34866	108881
								12%	12%	11%	11%	13%	29%
							grade 7 events	31039	32079	30891	32034	35136	36529
								13%	13%	13%	13%	13%	9%

2.2 Compared Parameters

Parameter	Planned	Actual	Parameter	Planned	Actual
Instrument	ACIS	ACIS	Obspar format version number	7	7
Detector	ACIS-012367	ACIS-012367	Obspar file type	PREDICTED	ACTUAL
Grating	NONE	NONE	Obspar update status	NONE	UPDATED
Data mode	FAINT	FAINT	On-chip summing requested	N	N
Observation mode	SECONDARY	SECONDARY	Subarray requested	NONE	NONE
[deg] Pointing RA	0	166.0191003175616	Alternating exposures requested	N	N
[deg] Pointing Dec	0	49.02572780438035	[s] Primary exposure time	0.000000	3.2
[deg] Pointing Roll	0.0	31.14238931212847			
[mm] SIM focus pos	-0.782348	-0.6828225247311905			
[mm] SIM defocus	0	0.8505141146731063			
[mm] SIM translation stage pos	-233.592463	250.466033080201			
[mm] SIM translation stage offset	0	-0.01005468664627074			
[s] Observation start time (MET)	181884804.914174	181884803.88945			
Observation start date	2003-10-07T03:33:25	2003-10-07T03:33:23			
[s] Observation end time (MET)	181908359.415187	181908358.39046			
Observation end date	2003-10-07T10:05:59	2003-10-07T10:05:58			
Read mode	TIMED	TIMED			

2.3 Star Slots

2.4 FID Slots

A Summary

A.1 Status

V&V Scientist	Beth Sundheim
V&V Date (YYYY-MM-DD)	2012.12.07
V&V Edition	1
V&V Disposition and Status	OK
V&V Charge Time	8.4622457835376

A.2 Comments