

V&V Reference Report

L2 ASCDS Version : 8.4.5

Observation 61399 - L2 Version 3
Chandra X-Ray Center

L2 Processing Date : Sep 28 2012

Contents

1	Front	2
2	OBI	3
2.1	OBI	3
2.1.1	Images	3
2.1.2	Bias	3
2.1.3	Parameters	4
2.1.4	Events	4
2.2	Compared Parameters	5
2.3	Star Slots	6
2.4	FID Slots	6
A	Summary	7
A.1	Status	7
A.2	Comments	7

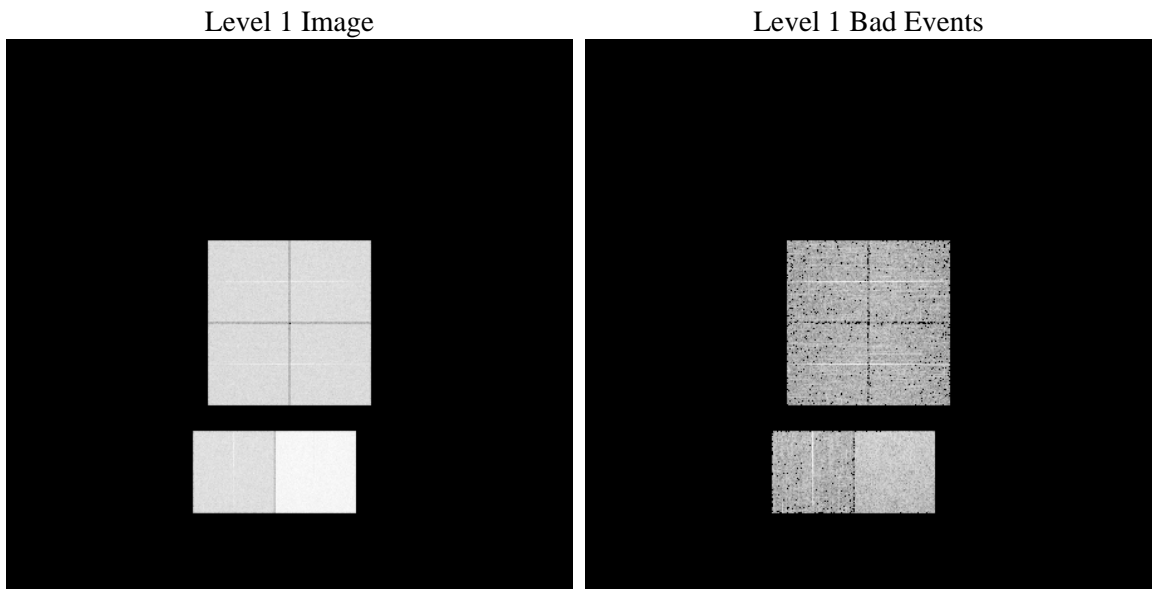
1 Front

seq_num	 	Sequence number
obs_id	61399	Observation id
title	ACIS-012367 diagnostics	Proposal title
observer	CHANDRA engineering request/realtime commanding	Principal investig
object	 	Source name
dtycle	0	
cycle	P	events from which exps? Prim/Second/Both
ra_targ	0.0	Observer's specified target RA [deg]
dec_targ	0.0	Observer's specified target Dec [deg]
ra_nom	322.03003201303	Nominal RA [deg]
dec_nom	-52.02184178939	Nominal Dec [deg]
roll_nom	277.45880484963	Nominal Roll [deg]
revision	3	Processing version of data
ontime	7363.5479447693	Sum of GTIs [s]
livetime	7270.3062668963	Livetime [s]
ontime0	2858.5940027833	Sum of GTIs [s]
ontime1	2951.3618030399	Sum of GTIs [s]
ontime2	2779.5476171225	Sum of GTIs [s]
ontime3	2835.9064535052	Sum of GTIs [s]
ontime6	3111.3928693235	Sum of GTIs [s]
ontime7	7363.5479447693	Sum of GTIs [s]
l2events	1219460	Number of level 2 events

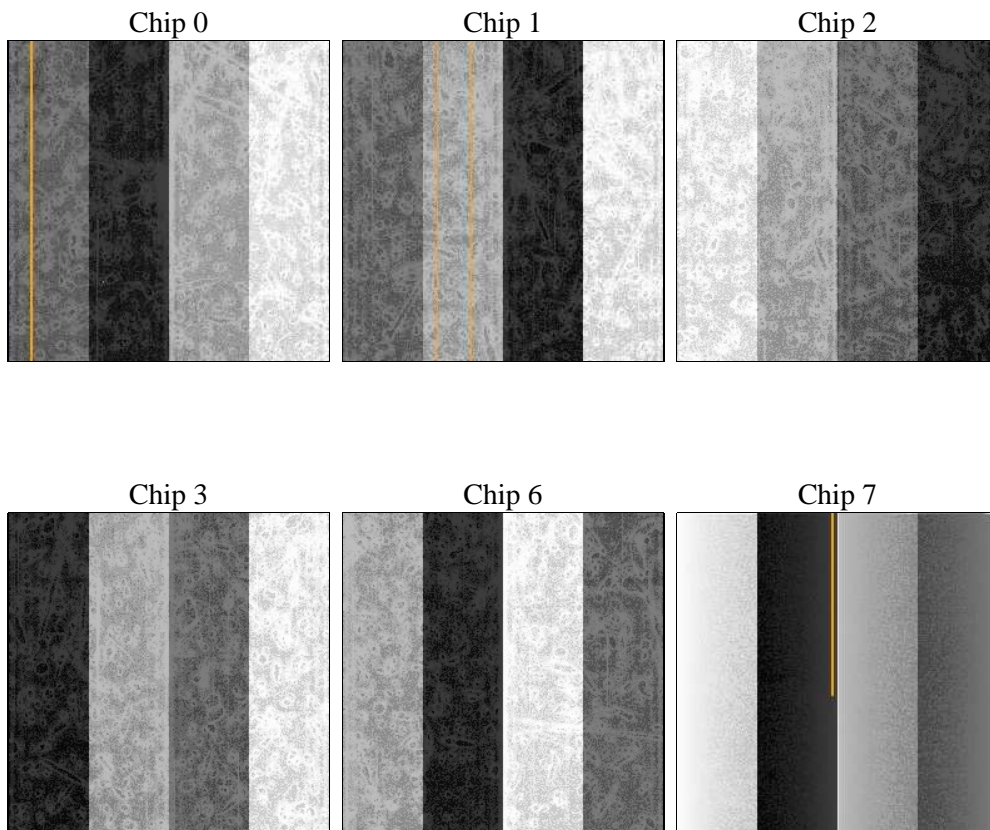
2 OBI

2.1 OBI

2.1.1 Images



2.1.2 Bias



2.1.3 Parameters

obi_num	2	Obi number	sched_exp_time	0.0	[s] Scheduled observation exposure time
ascdsver	8.4.5	Processing system revision	ontime	7363.5479447693	Sum of GTIs [s]
caldbver	4.5.2	 	ontime0	2858.5940027833	Sum of GTIs [s]
date	2012-09-28T08:50:10	Date and time of file creation	ontime1	2951.3618030399	Sum of GTIs [s]
revision	3	Processing version of data	ontime2	2779.5476171225	Sum of GTIs [s]
			ontime3	2835.9064535052	Sum of GTIs [s]
			ontime6	3111.3928693235	Sum of GTIs [s]
			ontime7	7363.5479447693	Sum of GTIs [s]
			l1events	1417585	Number of level 1 events

2.1.4 Events

	ccd 0	ccd 1	ccd 2	ccd 3	ccd 6	ccd 7		ccd 0	ccd 1	ccd 2	ccd 3	ccd 6	ccd 7
level 1 events	182032	188741	180686	183477	208618	474031	grade 0 events	88590	91869	88691	90620	101269	112514
rejected events	20648	22083	21125	21532	23215	38641		48%	48%	49%	49%	48%	23%
rejected %	11%	11%	11%	11%	11%	8%	grade 1 events	458	497	453	469	492	305
								0%	0%	0%	0%	0%	0%
							grade 2 events	28450	29254	27928	28316	32050	96788
								15%	15%	15%	15%	15%	20%
							grade 3 events	10404	10549	10119	10334	11578	44758
								5%	5%	5%	5%	5%	9%
							grade 4 events	10220	10417	10185	10321	11313	44428
								5%	5%	5%	5%	5%	9%
							grade 5 events	1483	1551	1423	1497	1781	8049
								0%	0%	0%	0%	0%	1%
							grade 6 events	23720	24569	22638	22354	29193	136987
								13%	13%	12%	12%	13%	28%
							grade 7 events	18707	20035	19249	19566	20942	30202
								10%	10%	10%	10%	10%	6%

2.2 Compared Parameters

Parameter	Planned	Actual	Parameter	Planned	Actual
Instrument	ACIS	ACIS	Obspar format version number	7	7
Detector	ACIS-012367	ACIS-012367	Obspar file type	PREDICTED	ACTUAL
Grating	NONE	NONE	Obspar update status	NONE	UPDATED
Data mode	FAINT	FAINT	On-chip summing requested	N	N
Observation mode	SECONDARY	SECONDARY	Subarray requested	NONE	NONE
[deg] Pointing RA	0	322.030032013029	Alternating exposures requested	N	N
[deg] Pointing Dec	0	-52.0218417893903	[s] Primary exposure time	0.000000	3.2
[deg] Pointing Roll	0.0	277.458804849633			
[mm] SIM focus pos	-0.782348	-1.428180813131781			
[mm] SIM defocus	0	0.1051558262725154			
[mm] SIM translation stage pos	-233.592463	250.466033080201			
[mm] SIM translation stage offset	0	-0.01005468664627074			
[s] Observation start time (MET)	123358425.628	123358424.85927			
Observation start date	2001-11-28T18:13:46	2001-11-28T18:13:44			
[s] Observation end time (MET)	123394495.379	123394494.61071			
Observation end date	2001-11-29T04:14:55	2001-11-29T04:14:54			
Read mode	TIMED	TIMED			

2.3 Star Slots

2.4 FID Slots

A Summary

A.1 Status

V&V Scientist	Beth Sundheim
V&V Date (YYYY-MM-DD)	2012.09.28
V&V Edition	1
V&V Disposition and Status	OK
V&V Charge Time	7.3635479447693

A.2 Comments