

V&V Reference Report

L2 ASCDS Version : 8.5.1

Observation 6229 - L2 Version 3
Chandra X-Ray Center

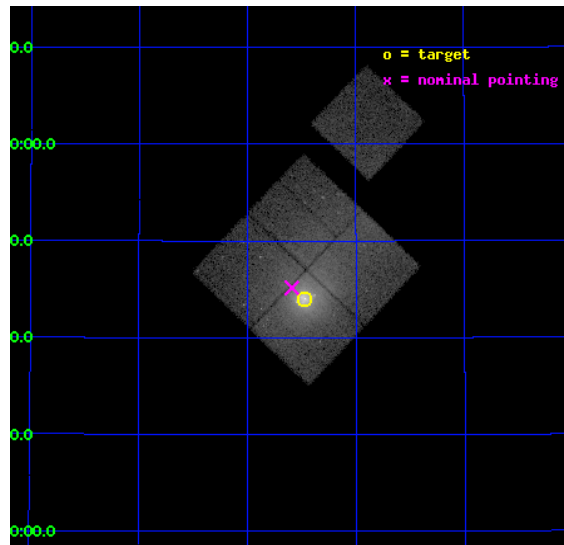
L2 Processing Date : Dec 17 2012

Contents

1	Front	2
2	OBI	3
2.1	OBI	3
2.1.1	Images	3
2.1.2	Bias	3
2.1.3	Parameters	4
2.1.4	Events	4
2.2	Compared Parameters	5
2.3	Aspect	6
2.4	Star Slots	9
2.4.1	Slot 3	9
2.4.2	Slot 4	10
2.4.3	Slot 5	11
2.4.4	Slot 6	12
2.4.5	Slot 7	13
2.5	FID Slots	14
2.5.1	Slot 0	14
2.5.2	Slot 1	15
2.5.3	Slot 2	16
A	Summary	17
A.1	Status	17
A.2	Comments	17

1 Front

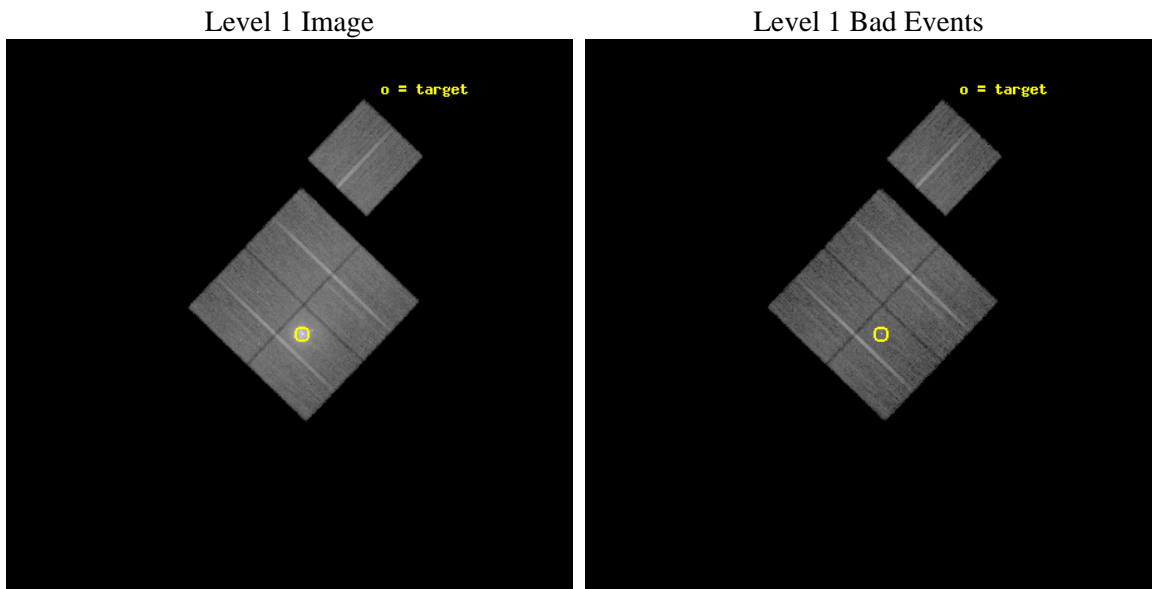
seq_num	800540	Sequence number
obs_id	6229	Observation id
title	Cygnus A --- Shock Heating of the Intra-Cluster Medium	Proposal ti
observer	Dr Andrew Young	Principal investigator
object	Cygnus A	Source name
dtcycle	0	
cycle	P	events from which exps? Prim/Second/Both
ra_targ	299.867917	Observer's specified target RA [deg]
dec_targ	40.733889	Observer's specified target Dec [deg]
ra_nom	299.89760849989	Nominal RA [deg]
dec_nom	40.752741080222	Nominal Dec [deg]
roll_nom	43.689313013216	Nominal Roll [deg]
revision	3	Processing version of data
ontime	23054.699955642	Sum of GTIs [s]
livetime	22753.473328099	Livetime [s]
ontime0	23054.699955642	Sum of GTIs [s]
ontime1	23054.699955642	Sum of GTIs [s]
ontime2	23051.558975369	Sum of GTIs [s]
ontime3	23051.558985382	Sum of GTIs [s]
ontime6	23048.418015122	Sum of GTIs [s]
l2events	211091	Number of level 2 events



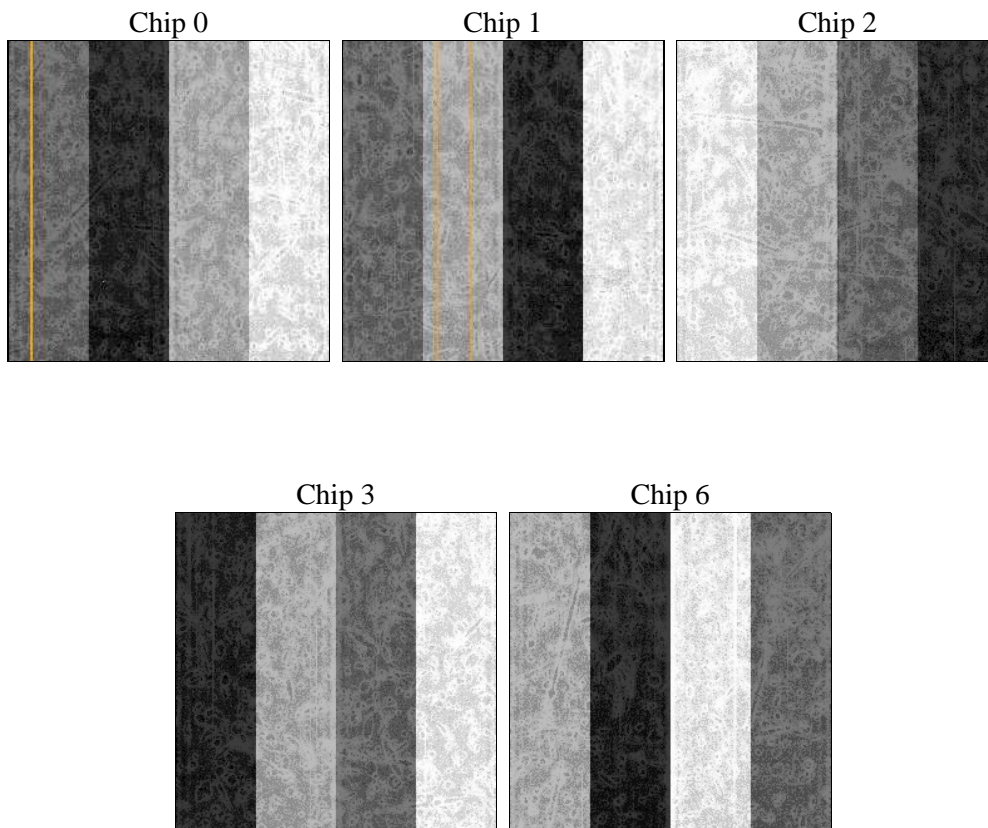
2 OBI

2.1 OBI

2.1.1 Images



2.1.2 Bias



2.1.3 Parameters

obi_num	0	Obi number	sched_exp_time	22900.000000	[s] Scheduled observation exposure time
ascdsver	8.5.1	Processing system revision	ontime	23054.699955642	Sum of GTIs [s]
caldbver	4.5.5	 	ontime0	23054.699955642	Sum of GTIs [s]
date	2012-12-17T19:35:08	Date and time of file creation	ontime1	23054.699955642	Sum of GTIs [s]
revision	3	Processing version of data	ontime2	23051.558975369	Sum of GTIs [s]
			ontime3	23051.558985382	Sum of GTIs [s]
			ontime6	23048.418015122	Sum of GTIs [s]
			l1events	865379	Number of level 1 events

2.1.4 Events

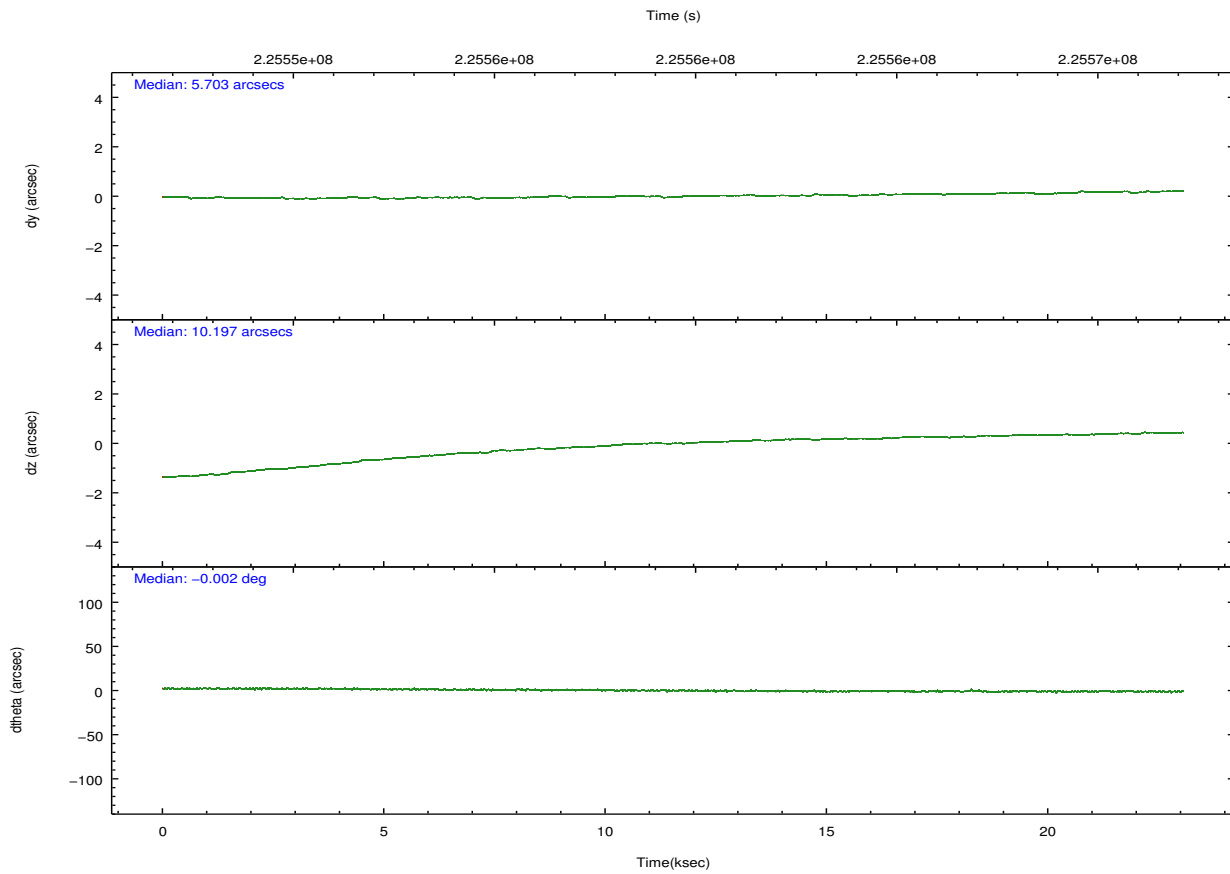
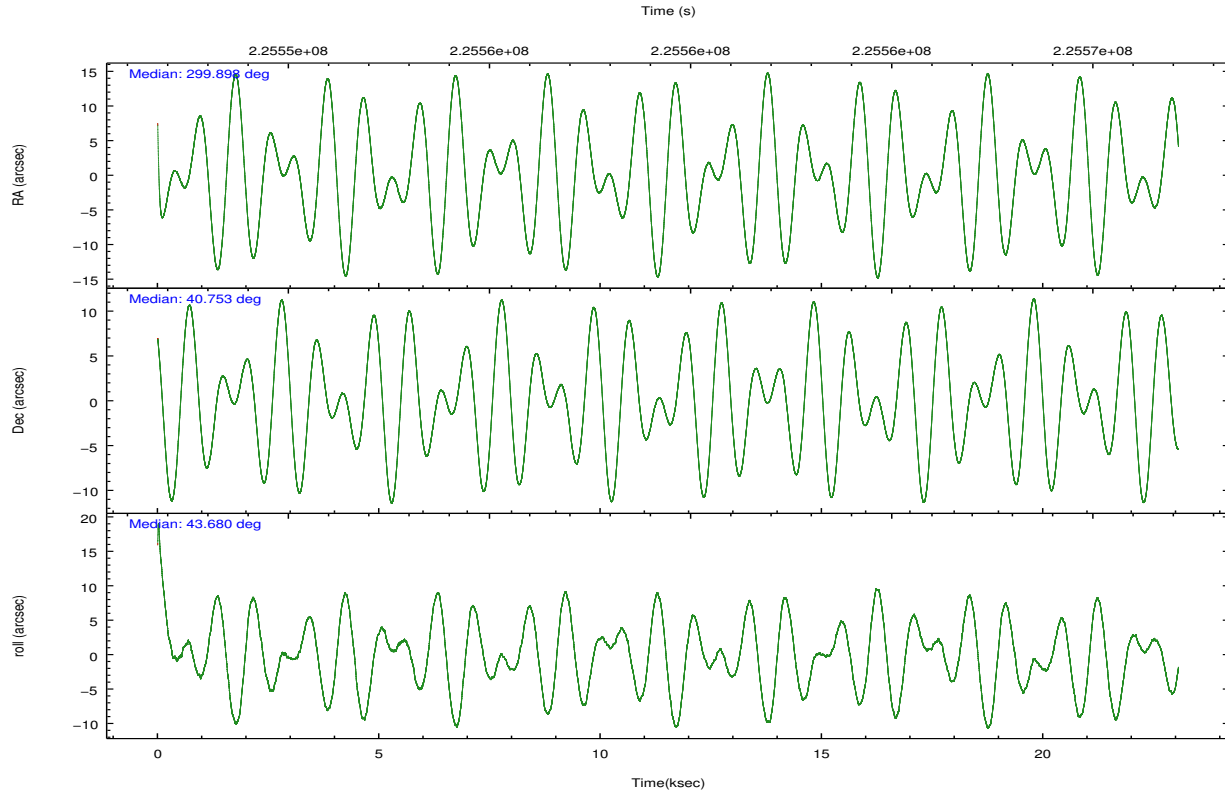
	ccd 0	ccd 1	ccd 2	ccd 3	ccd 6
level 1 events	147862	242633	161933	165871	147080
rejected events	119638	121630	133204	128661	130173
rejected %	80%	50%	82%	77%	88%

	ccd 0	ccd 1	ccd 2	ccd 3	ccd 6
grade 0 events	16363	88402	17529	23886	7297
	11%	36%	10%	14%	4%
grade 1 events	131	812	136	159	70
	0%	0%	0%	0%	0%
grade 2 events	4976	15766	4642	5577	3413
	3%	6%	2%	3%	2%
grade 3 events	2065	5501	2005	2380	1695
	1%	2%	1%	1%	1%
grade 4 events	1988	5482	2100	2458	1741
	1%	2%	1%	1%	1%
grade 5 events	5146	6301	4926	5944	5662
	3%	2%	3%	3%	3%
grade 6 events	3387	7162	2969	3512	3197
	2%	2%	1%	2%	2%
grade 7 events	113806	113207	127626	121955	124005
	76%	46%	78%	73%	84%

2.2 Compared Parameters

Parameter	Planned	Actual	Parameter	Planned	Actual
Instrument	ACIS	ACIS	Obspar format version number	7	7
Detector	ACIS-01236	ACIS-01236	Obspar file type	PREDICTED	ACTUAL
Grating	NONE	NONE	Obspar update status	NONE	UPDATED
Data mode	VFAINT	VFAINT	Number of optional ACIS chips dropped	0	0
Observation mode	POINTING	POINTING	On-chip summing requested	N	N
[deg] Pointing RA	299.887572	299.8976084998944	Subarray requested	NONE	NONE
[deg] Pointing Dec	40.726424	40.75274108022244	Alternating exposures requested	N	N
[deg] Pointing Roll	43.487167	43.68931301321577	[s] Primary exposure time	0.000000	3.1
[mm] SIM focus pos	-0.782348	-0.7809083437167272			
[mm] SIM defocus	0	0.001439871863259334			
[mm] SIM translation stage pos	-242.392463	-242.3975952774949			
[mm] SIM translation stage offset	8.800000000000001	8.805142274565242			
[s] Observation start time (MET)	225548071.184000	225546756.44577			
Observation start date	2005-02-23T12:13:27	2005-02-23T11:52:36			
[s] Observation end time (MET)	225570971.184000	225572567.99694			
Observation end date	2005-02-23T18:35:07	2005-02-23T19:02:47			
Read mode	TIMED	TIMED			

2.3 Aspect



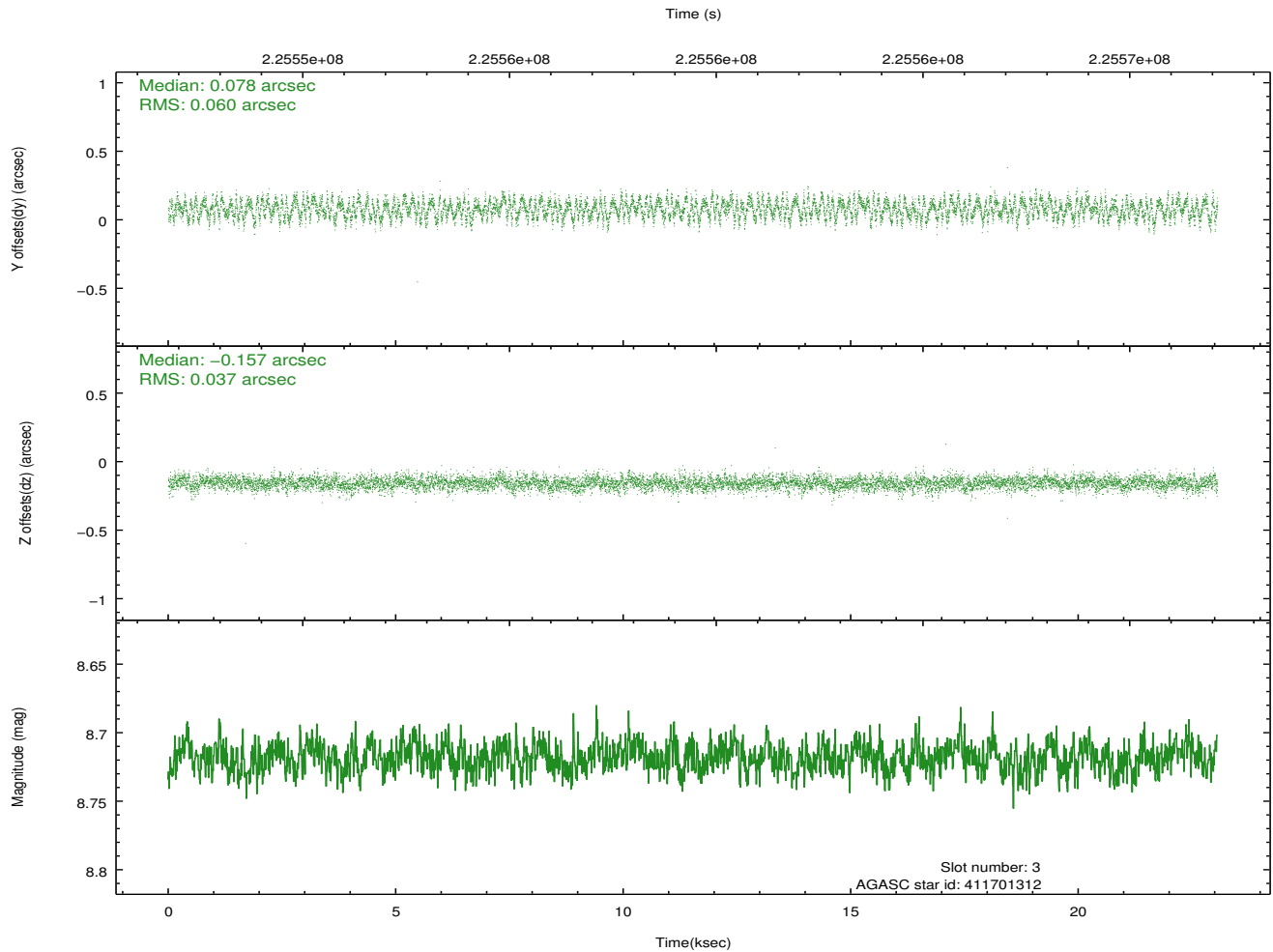
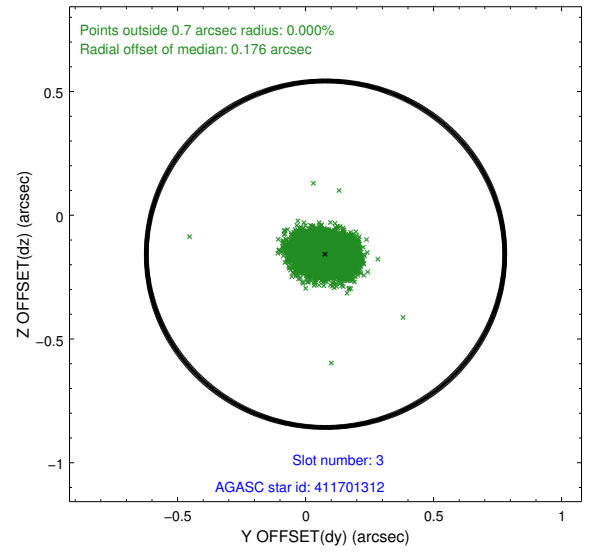
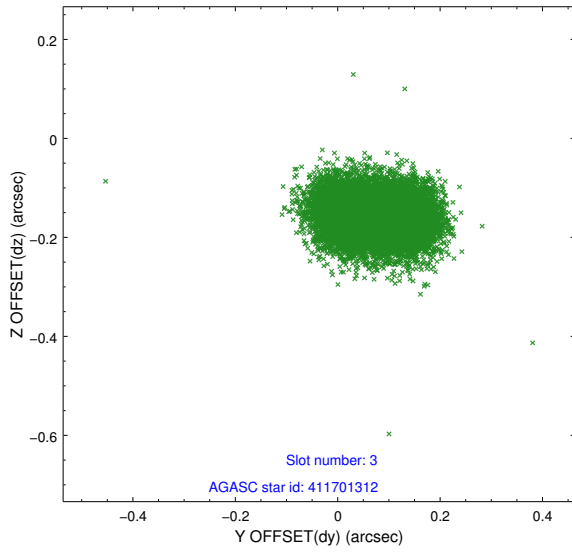
Slot Statistics

slot	status	id	mag	n_pts	med_dy	med_dz	dr1	dr2	ra	dec	mean_y	mean_z
0	FID	ACIS-I-1	7.28	5625	-0.040	0.097	0.029	0.065	0.000000	0.000000	934.12	-652.43
1	FID	ACIS-I-5	7.24	5625	-0.098	0.011	0.011	0.017	0.000000	0.000000	-1813.96	1244.96
2	FID	ACIS-I-6	7.24	5625	0.047	-0.040	0.022	0.063	0.000000	0.000000	399.61	1889.56
3	GUIDE	411701312	8.72	11246	0.078	-0.157	0.075	0.120	298.889956	40.820220	-1728.83	2126.32
4	GUIDE	411707968	7.26	11249	0.045	-0.009	0.052	0.084	299.509933	40.926839	-247.17	1232.26
5	GUIDE	413405352	8.35	11247	0.014	-0.199	0.057	0.091	300.290830	41.091941	1701.29	203.84
6	GUIDE	413418680	9.30	11240	0.031	0.251	0.095	0.154	300.860298	40.740057	1969.28	-1779.00
7	GUIDE	413421016	8.71	11246	-0.165	0.114	0.068	0.110	300.612426	40.446254	752.82	-2092.30

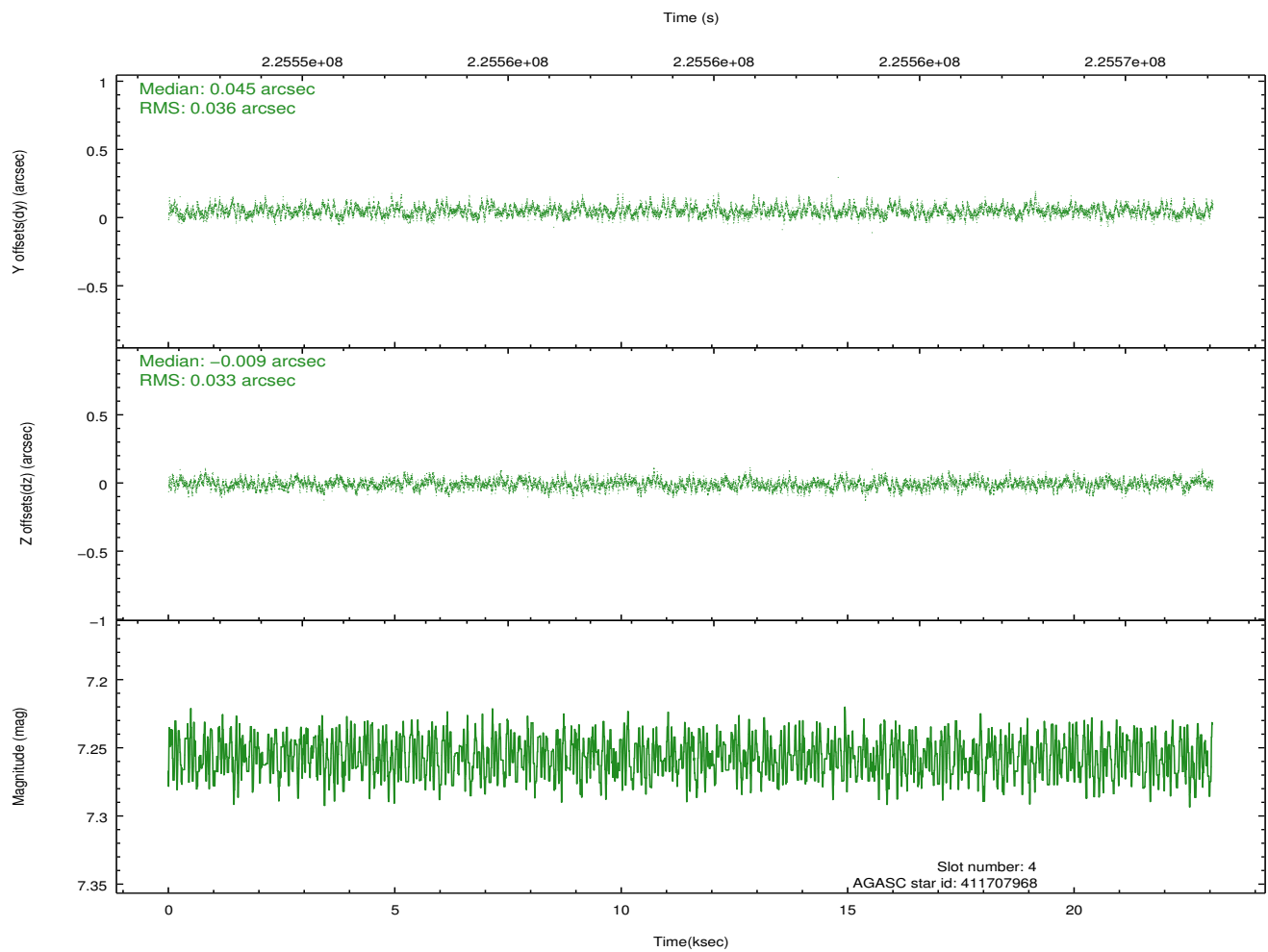
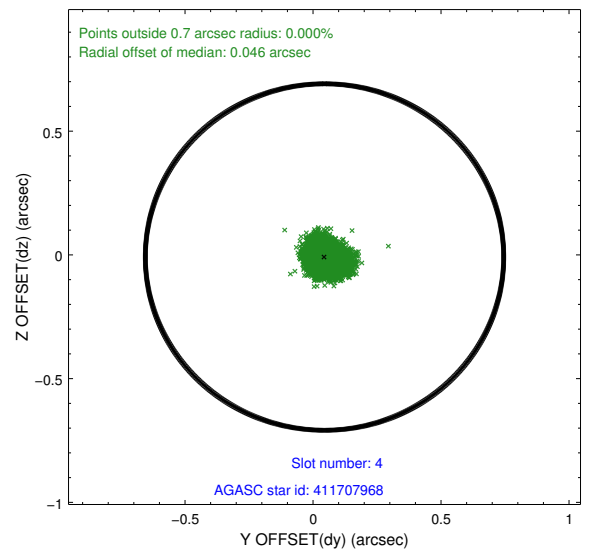
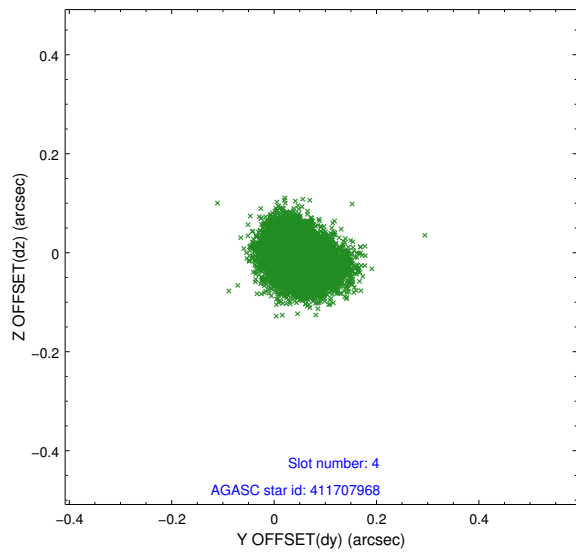
∞

2.4 Star Slots

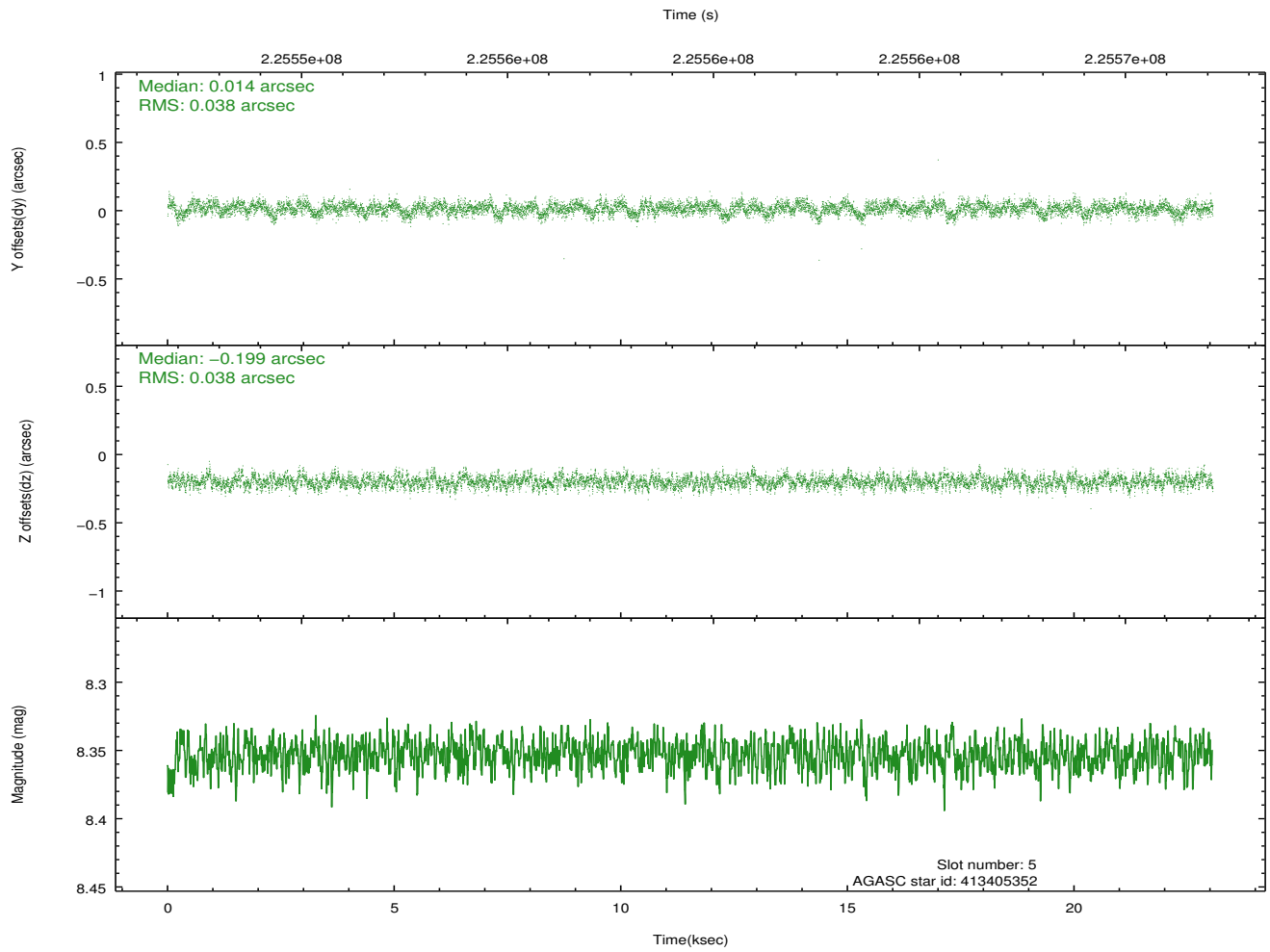
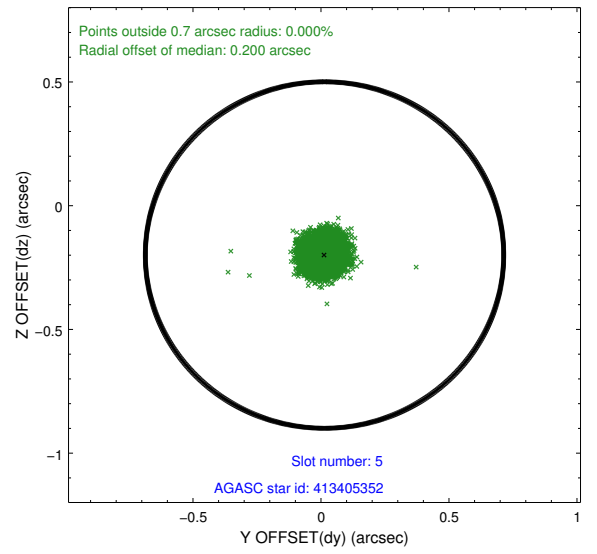
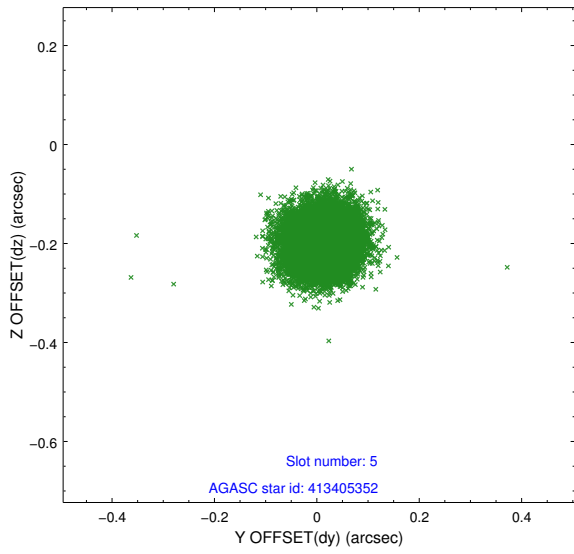
2.4.1 Slot 3



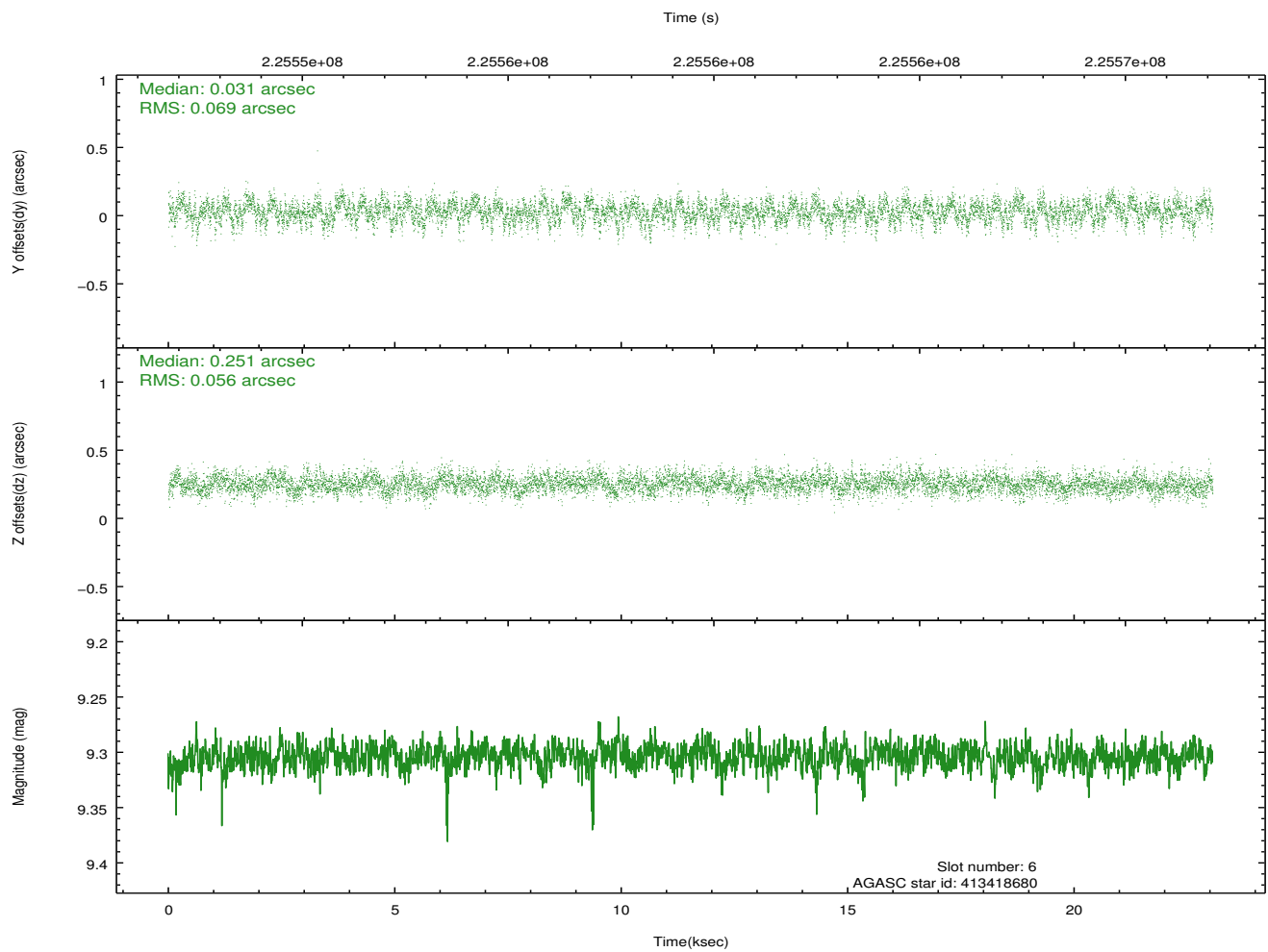
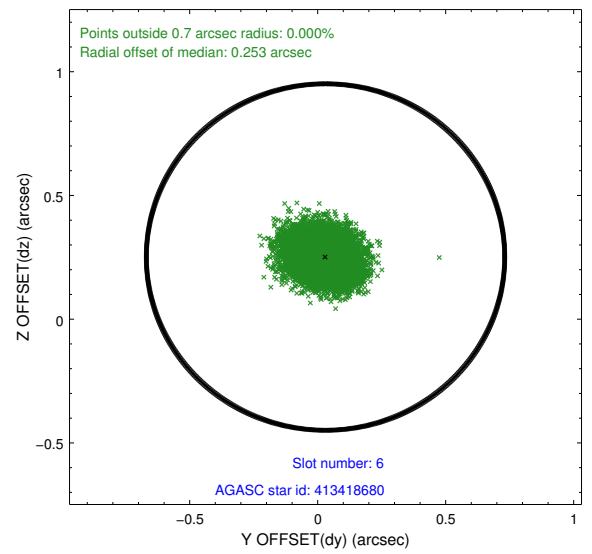
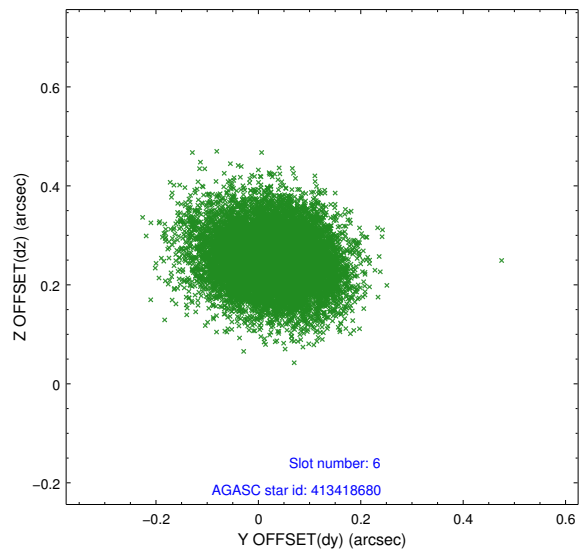
2.4.2 Slot 4



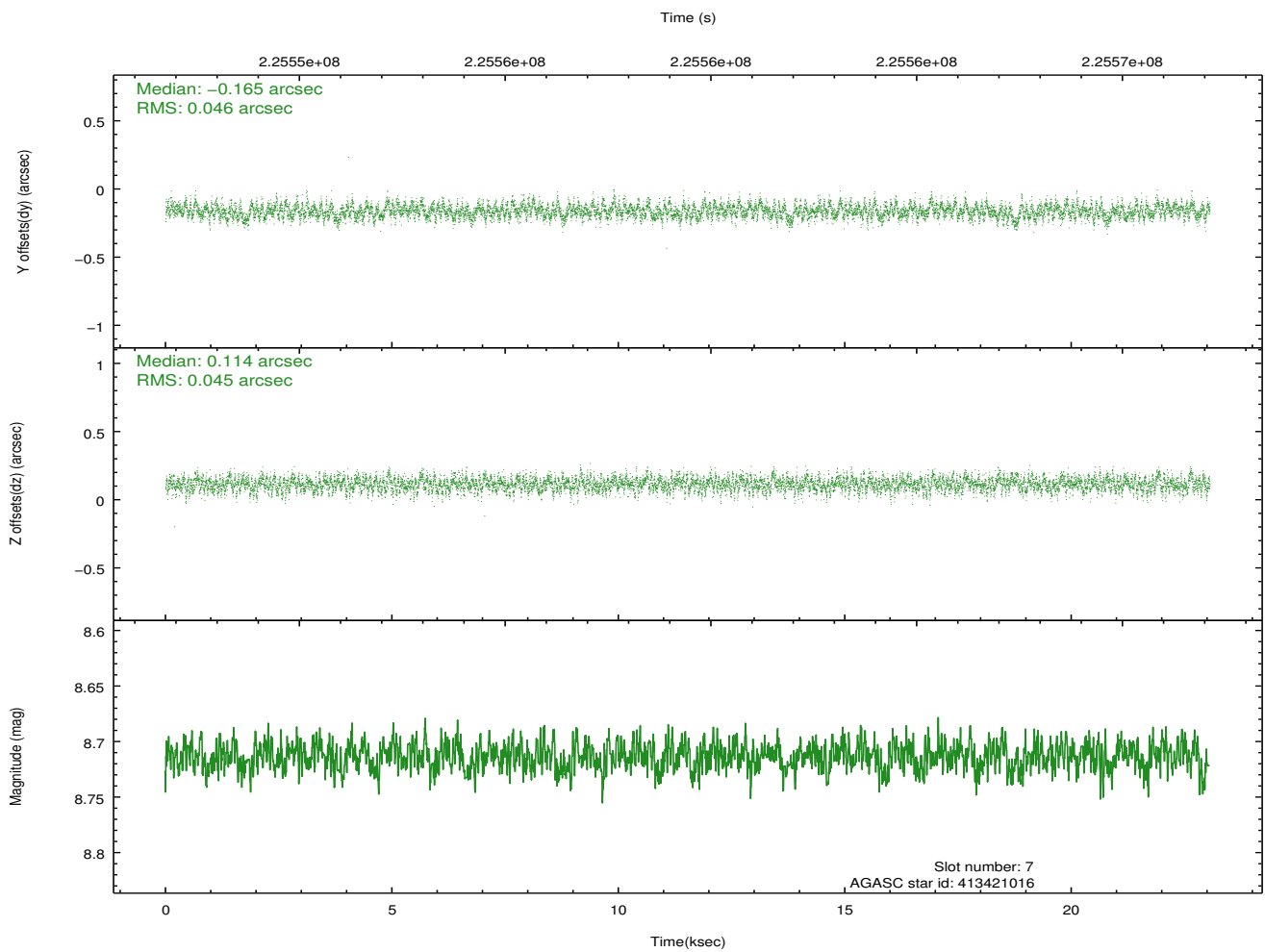
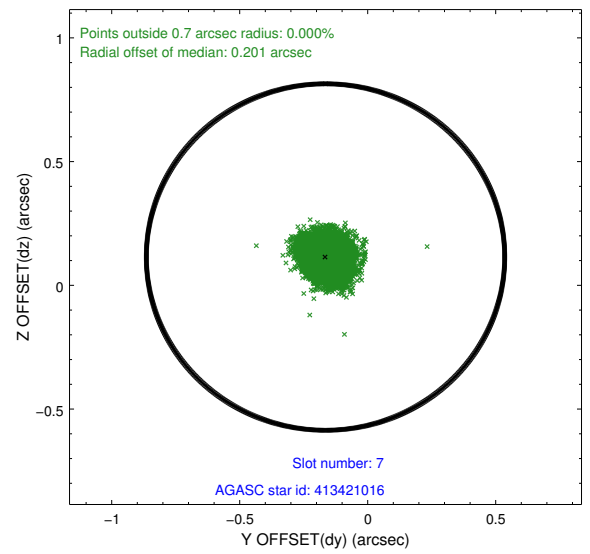
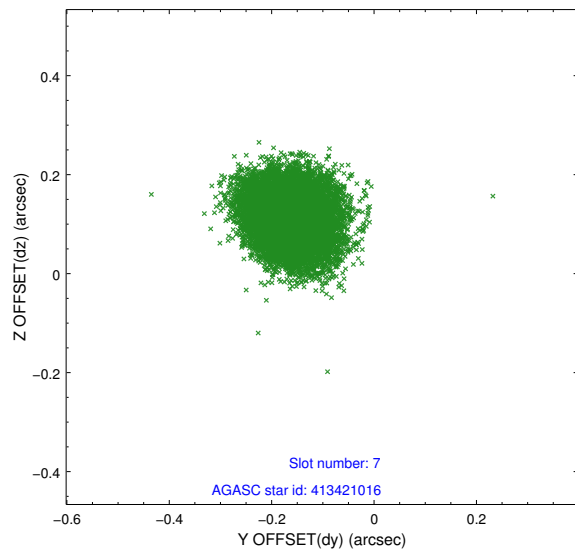
2.4.3 Slot 5



2.4.4 Slot 6

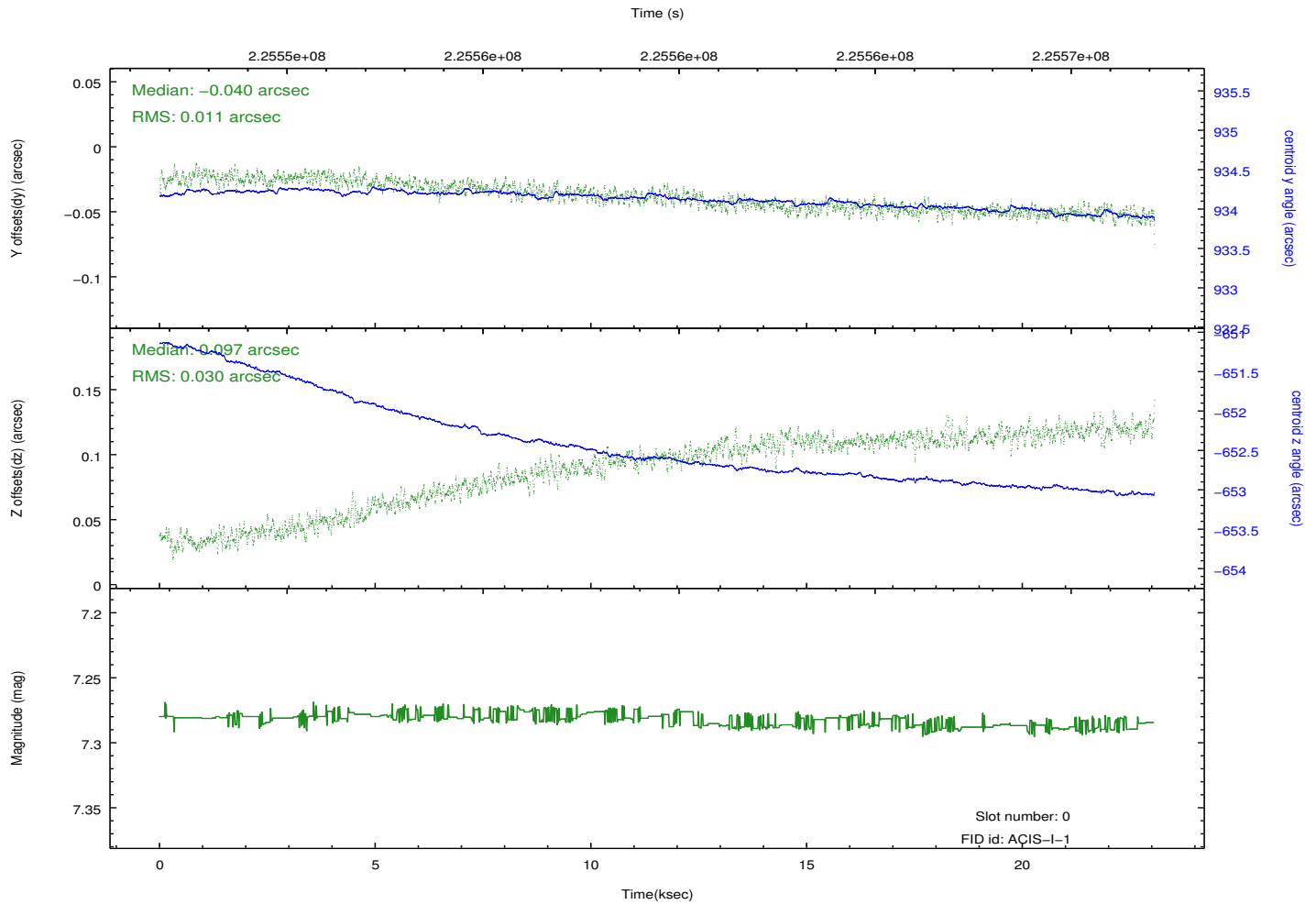
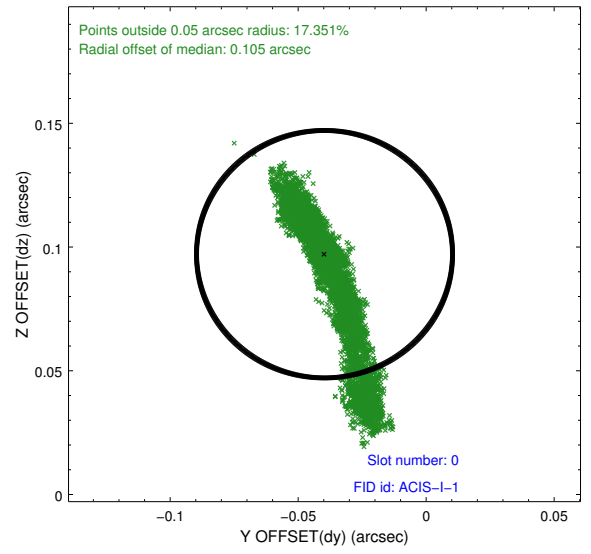
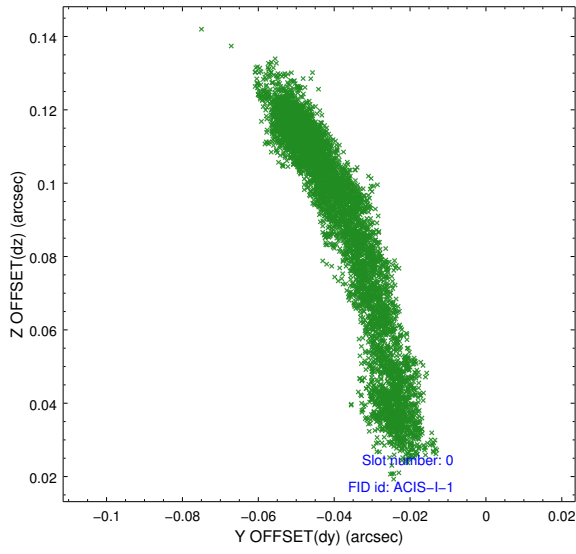


2.4.5 Slot 7

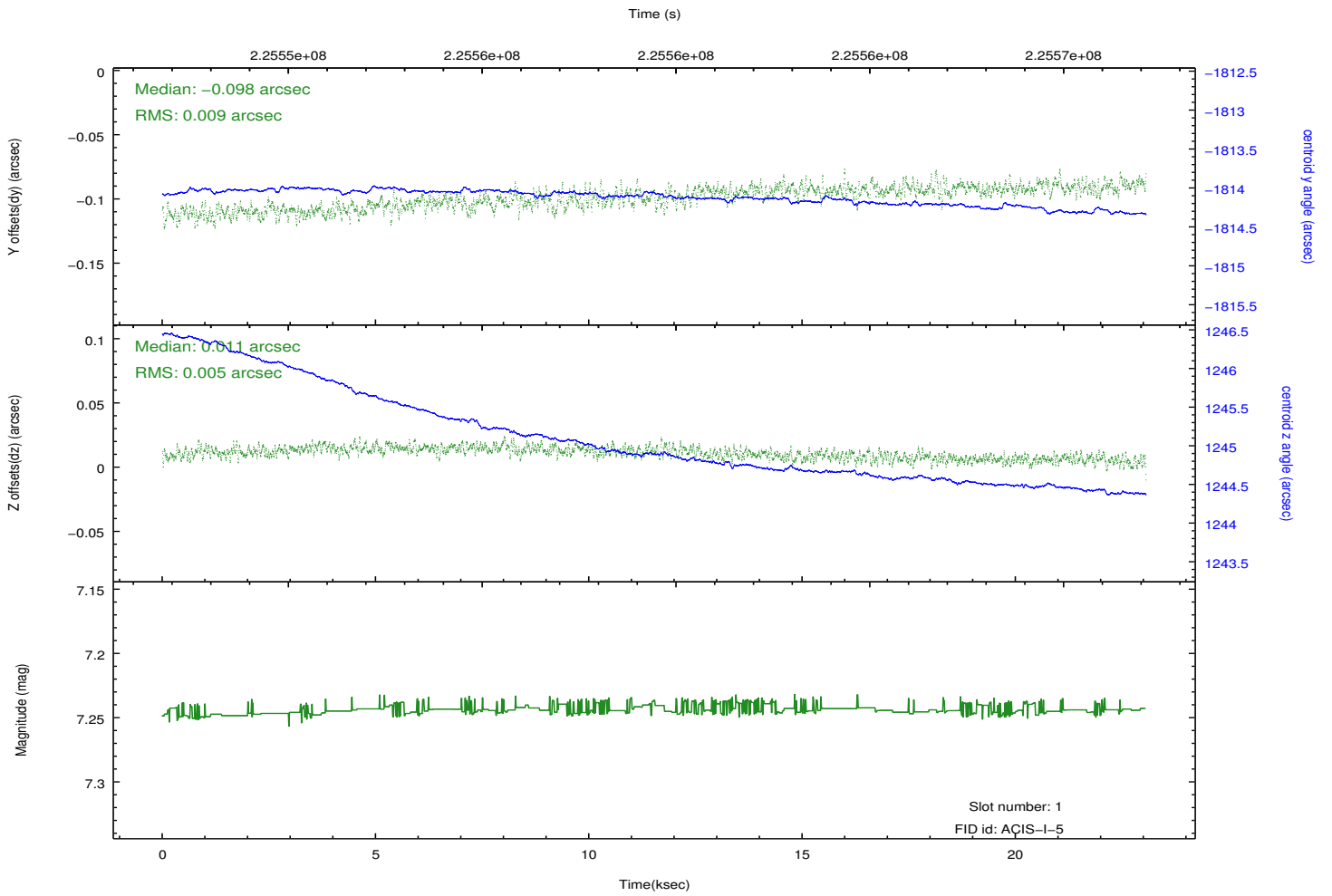
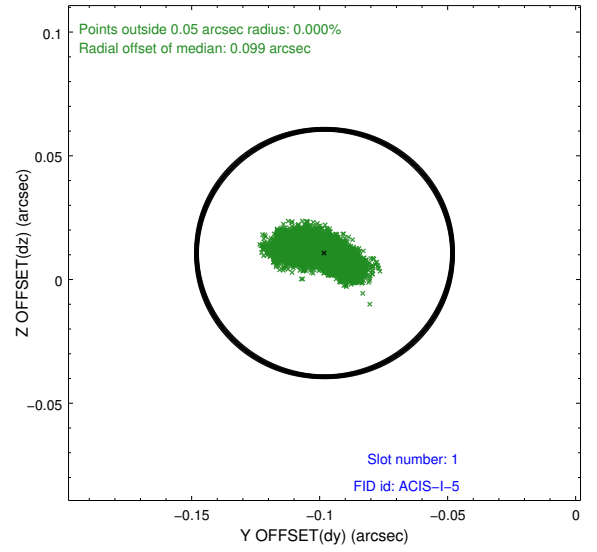
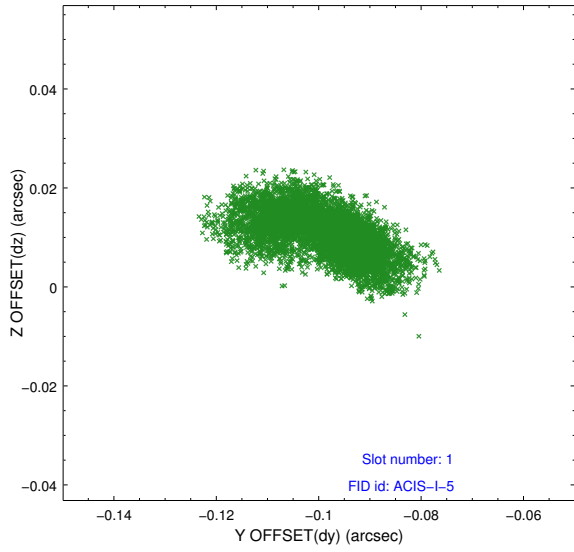


2.5 FID Slots

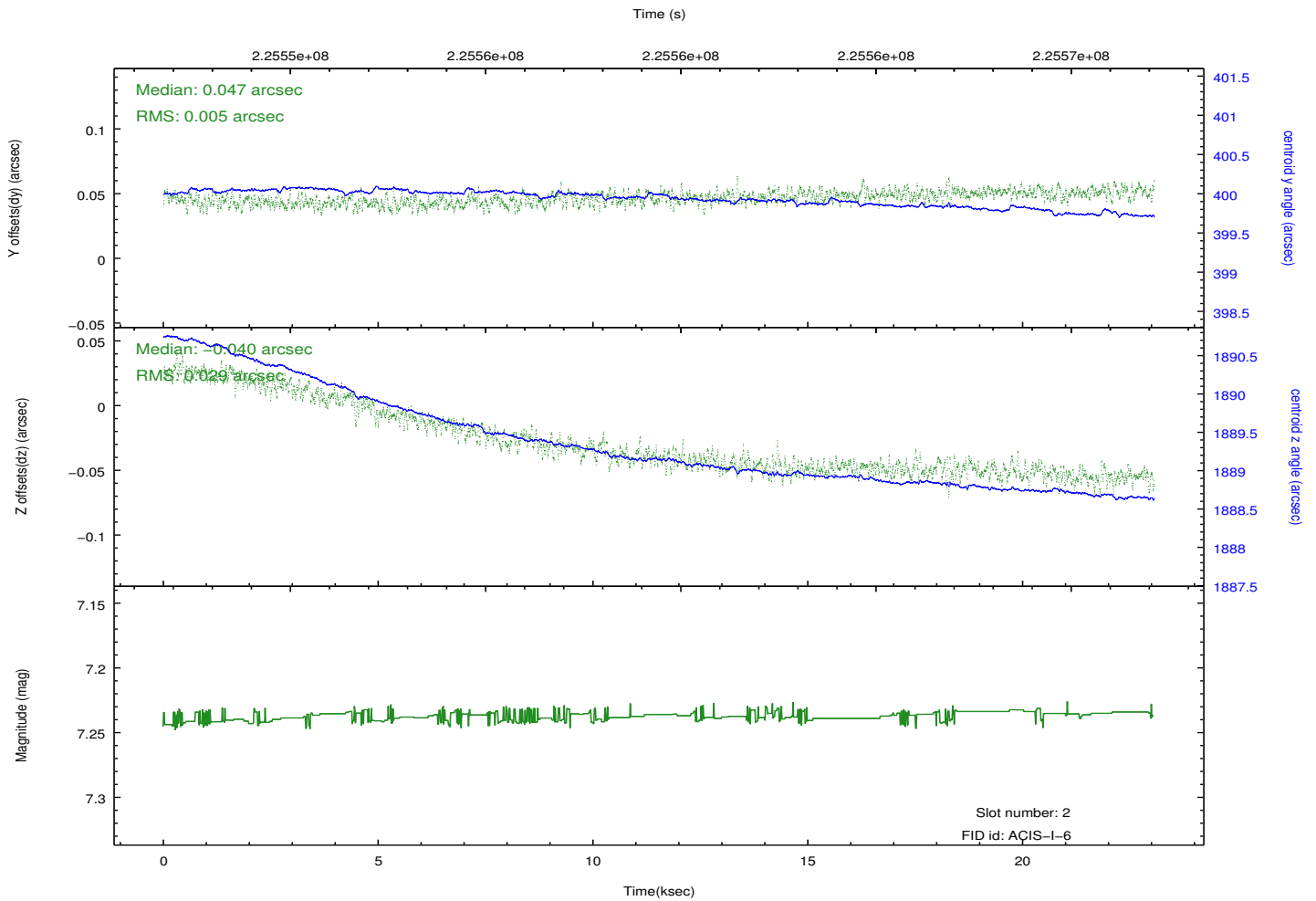
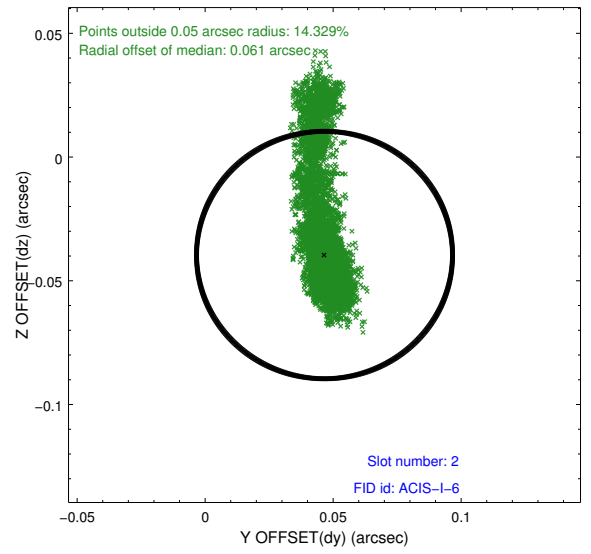
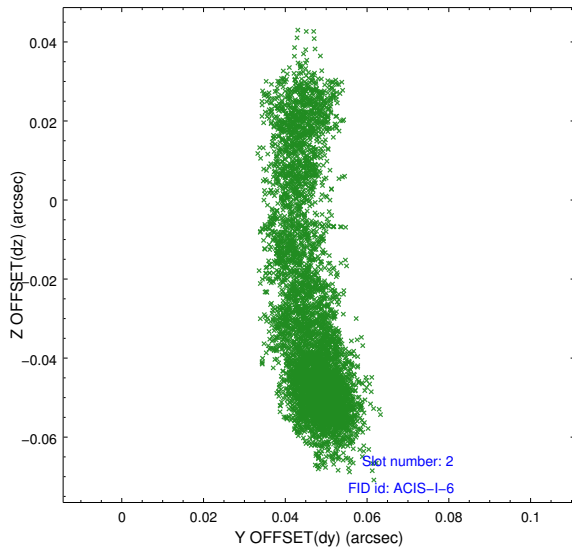
2.5.1 Slot 0



2.5.2 Slot 1



2.5.3 Slot 2



A Summary

A.1 Status

V&V Scientist	Jen Lauer
V&V Date (YYYY-MM-DD)	2013.01.10
V&V Edition	1
V&V Disposition and Status	OK
V&V Charge Time	23.05469

A.2 Comments