

# V&V Reference Report

## L2 ASCDS Version : 8.4.3.1

Observation 6309 - L2 Version 2  
Chandra X-Ray Center

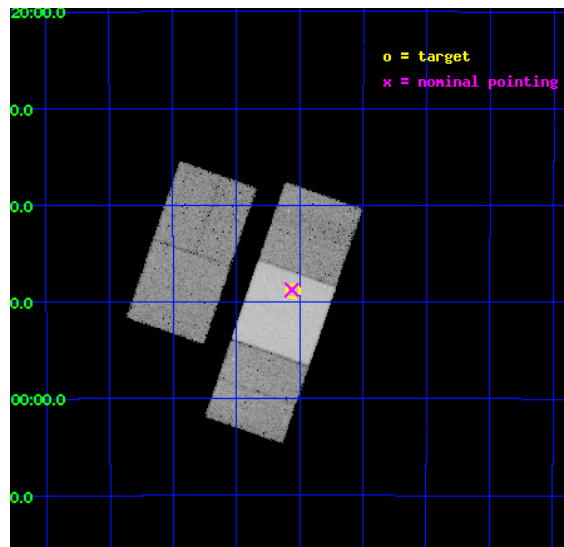
L2 Processing Date : Apr 2 2012

## Contents

<b>1</b>	<b>Front</b>	<b>2</b>
<b>2</b>	<b>OBI</b>	<b>3</b>
2.1	OBI . . . . .	3
2.1.1	Images . . . . .	3
2.1.2	Bias . . . . .	3
2.1.3	Parameters . . . . .	4
2.1.4	Events . . . . .	4
2.2	Compared Parameters . . . . .	5
2.3	Aspect . . . . .	6
2.4	Star Slots . . . . .	9
2.4.1	Slot 3 . . . . .	9
2.4.2	Slot 4 . . . . .	10
2.4.3	Slot 5 . . . . .	11
2.4.4	Slot 6 . . . . .	12
2.4.5	Slot 7 . . . . .	13
2.5	FID Slots . . . . .	14
2.5.1	Slot 0 . . . . .	14
2.5.2	Slot 1 . . . . .	15
2.5.3	Slot 2 . . . . .	16
<b>A</b>	<b>Summary</b>	<b>17</b>
A.1	Status . . . . .	17
A.2	Comments . . . . .	17

# 1 Front

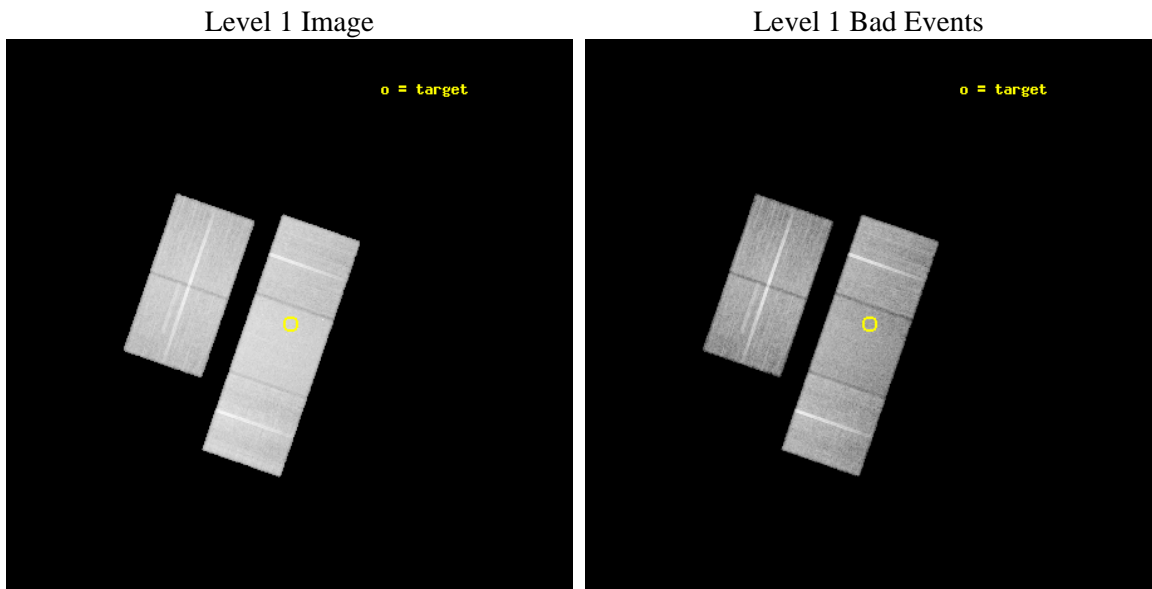
seq_num	500607	Sequence number
obs_id	6309	Observation id
title	Gamma-Ray Bursts from Start to Finish: A Legacy Approach	Proposal
observer	Prof. Shrinivas Kulkarni	Principal investigator
object	GRB060505	Source name
dtcycle	0	&#160
cycle	P	events from which exps? Prim/Second/Both
ra_targ	331.7641	Observer's specified target RA [deg]
dec_targ	-27.8144	Observer's specified target Dec [deg]
ra_nom	331.76547536075	Nominal RA [deg]
dec_nom	-27.812707517402	Nominal Dec [deg]
roll_nom	109.04005087869	Nominal Roll [deg]
revision	2	Processing version of data
ontime	25031.958653897	Sum of GTIs [s]
livetime	24704.897685824	Livetime [s]
ontime2	25031.794493884	Sum of GTIs [s]
ontime3	25035.017544121	Sum of GTIs [s]
ontime6	25028.776643604	Sum of GTIs [s]
ontime7	25031.958653897	Sum of GTIs [s]
ontime8	25022.412682742	Sum of GTIs [s]
l2events	218841	Number of level 2 events



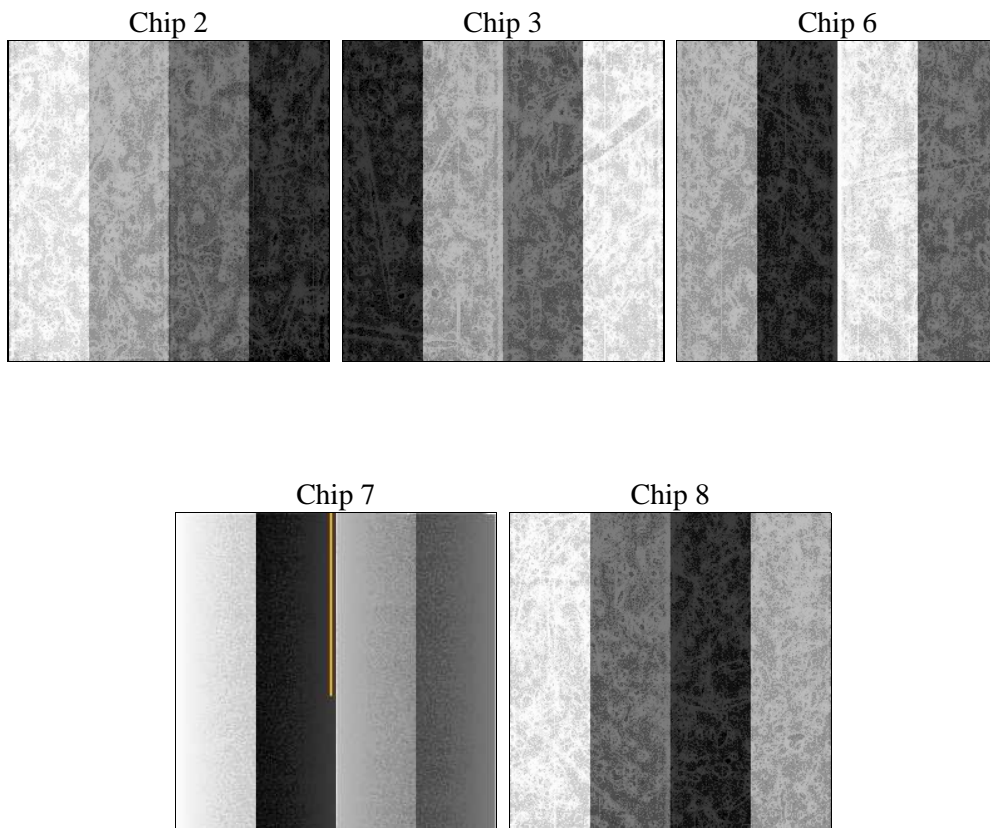
## 2 OBI

### 2.1 OBI

#### 2.1.1 Images



#### 2.1.2 Bias



### 2.1.3 Parameters

obi_num	0	Obi number	sched_exp_time	25000.000000	[s] Scheduled observation exposure time
ascdsver	8.4.3	Processing system revision	ontime	25031.958653897	Sum of GTIs [s]
caldbver	4.4.9	&#160	ontime2	25031.794493884	Sum of GTIs [s]
date	2012-04-02T04:16:37	Date and time of file creation	ontime3	25035.017544121	Sum of GTIs [s]
revision	2	Processing version of data	ontime6	25028.776643604	Sum of GTIs [s]
			ontime7	25031.958653897	Sum of GTIs [s]
			ontime8	25022.412682742	Sum of GTIs [s]
			l1events	1262495	Number of level 1 events

### 2.1.4 Events

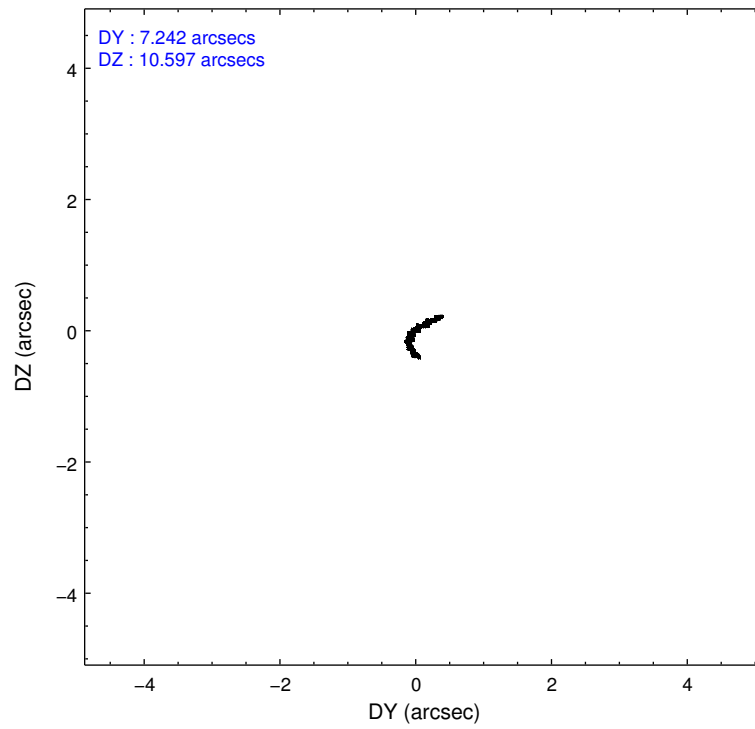
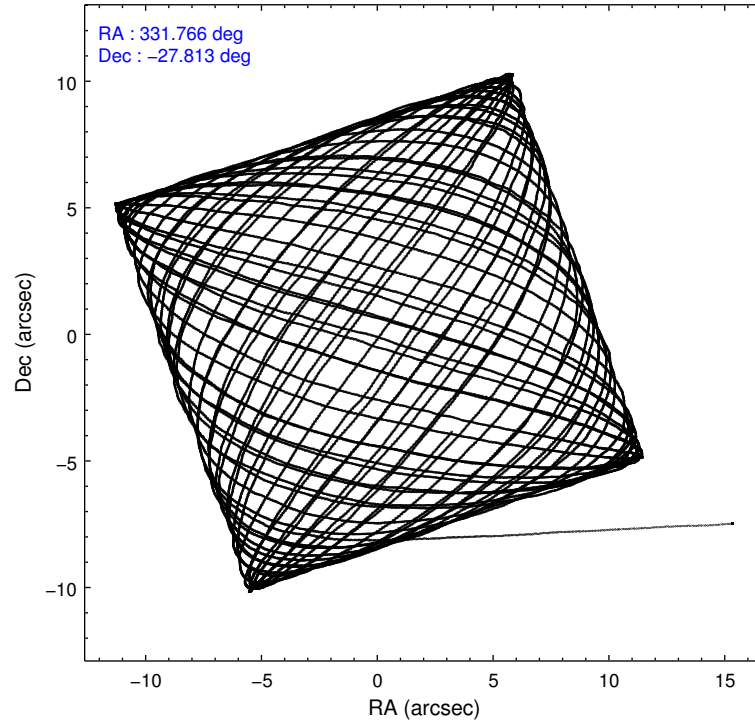
	ccd 2	ccd 3	ccd 6	ccd 7	ccd 8
level 1 events	221602	219454	229832	305758	285849
rejected events	195672	193615	203349	179157	224903
rejected %	88%	88%	88%	58%	78%

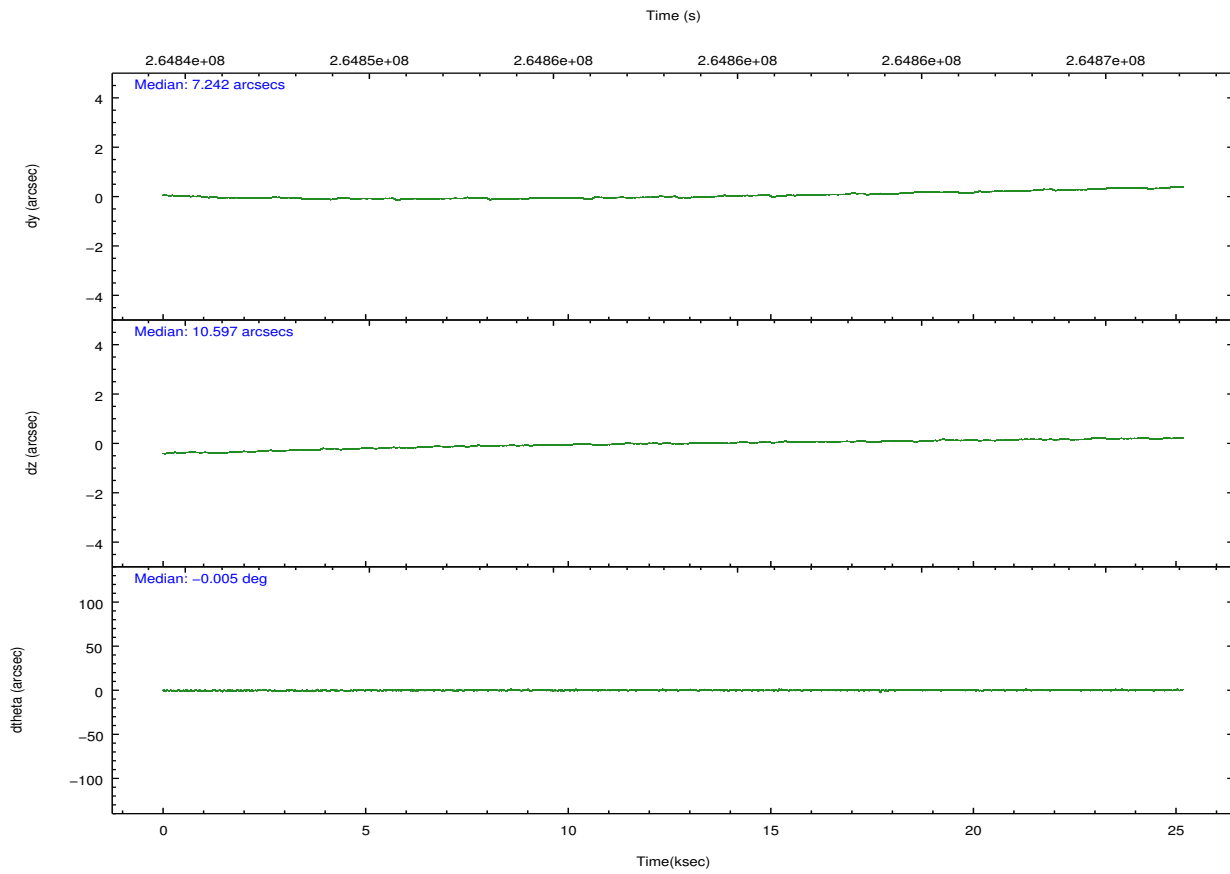
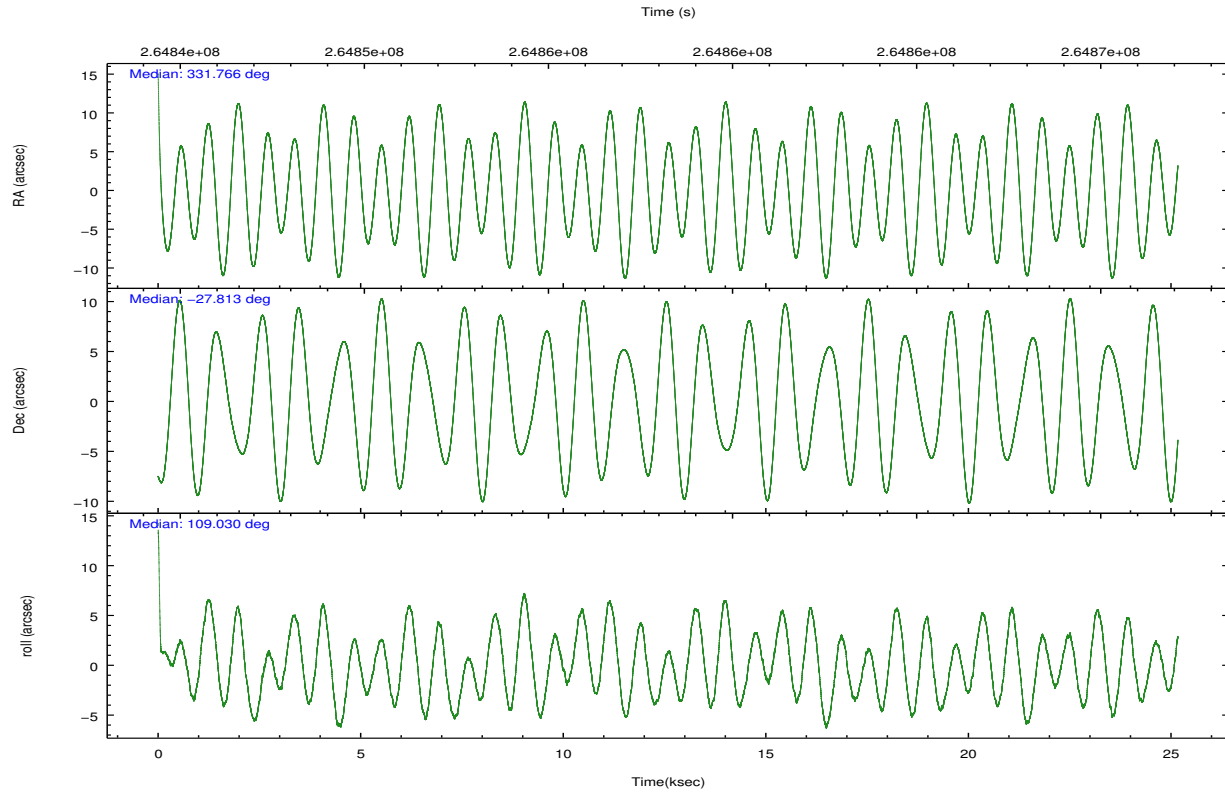
	ccd 2	ccd 3	ccd 6	ccd 7	ccd 8
grade 0 events	11581	11188	10386	11426	19679
	5%	5%	4%	3%	6%
grade 1 events	155	132	100	313	206
	0%	0%	0%	0%	0%
grade 2 events	5199	5000	5569	25273	13553
	2%	2%	2%	8%	4%
grade 3 events	2418	2555	2574	10954	6491
	1%	1%	1%	3%	2%
grade 4 events	2488	2463	2517	11034	5785
	1%	1%	1%	3%	2%
grade 5 events	8271	10133	10438	28998	14006
	3%	4%	4%	9%	4%
grade 6 events	4258	4635	5443	67954	15441
	1%	2%	2%	22%	5%
grade 7 events	187232	183348	192805	149806	210688
	84%	83%	83%	48%	73%

## 2.2 Compared Parameters

Parameter	Planned	Actual	Parameter	Planned	Actual
Instrument	ACIS	ACIS	Obspar format version number	7	7
Detector	ACIS-23678	ACIS-23678	Obspar file type	PREDICTED	ACTUAL
Grating	NONE	NONE	Obspar update status	NONE	UPDATED
Data mode	VFAINT	VFAINT	Number of optional ACIS chips dropped	0	0
Observation mode	POINTING	POINTING	On-chip summing requested	N	N
[deg] Pointing RA	331.789024	331.7654753607534	Subarray requested	NONE	NONE
[deg] Pointing Dec	-27.830269	-27.81270751740246	Alternating exposures requested	N	N
[deg] Pointing Roll	108.894413	109.0400508786944	[s] Primary exposure time	0.000000	3.1
[mm] SIM focus pos	-0.684267	-0.6828225247311905			
[mm] SIM defocus	0	0.001444936568705701			
[mm] SIM translation stage pos	-190.132523	-190.1400660498719			
[mm] SIM translation stage offset	0	0.00754346686406393			
[s] Observation start time (MET)	264845836.184000	264844897.9669			
Observation start date	2006-05-24T08:16:11	2006-05-24T08:01:37			
[s] Observation end time (MET)	264870836.184000	264871535.66815			
Observation end date	2006-05-24T15:12:51	2006-05-24T15:25:35			
Read mode	TIMED	TIMED			

## 2.3 Aspect



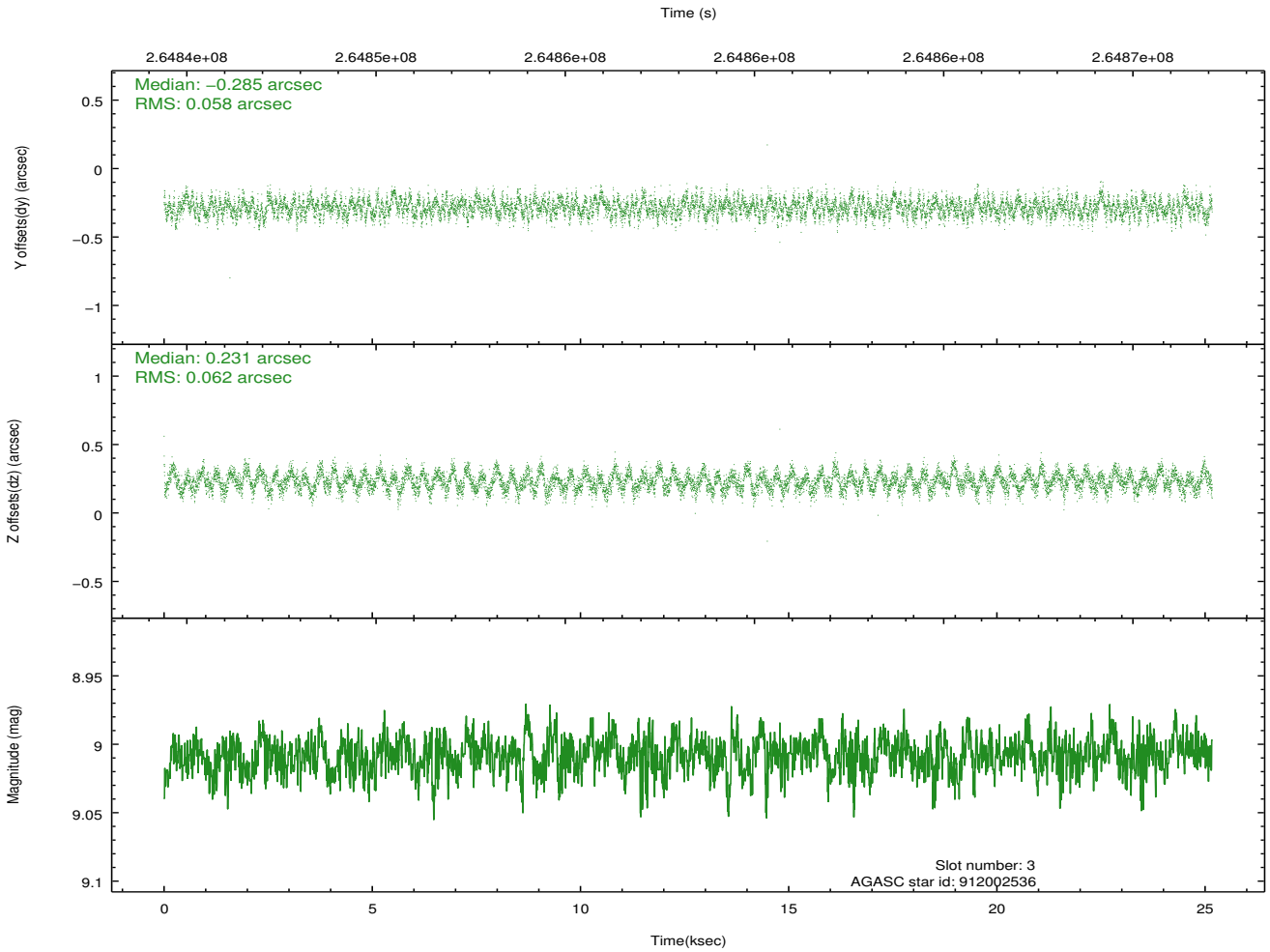
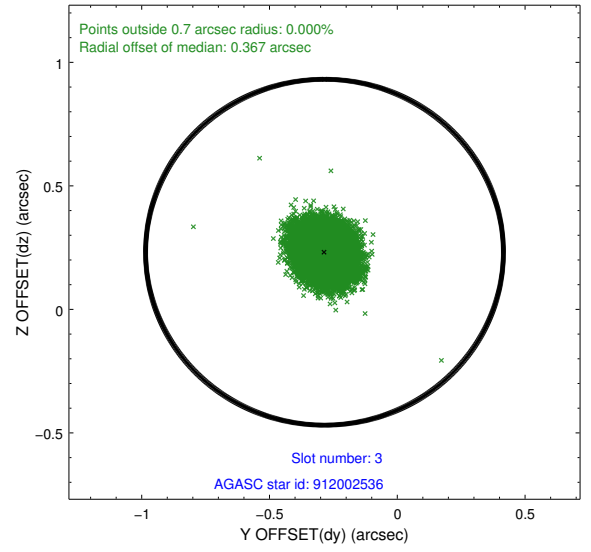
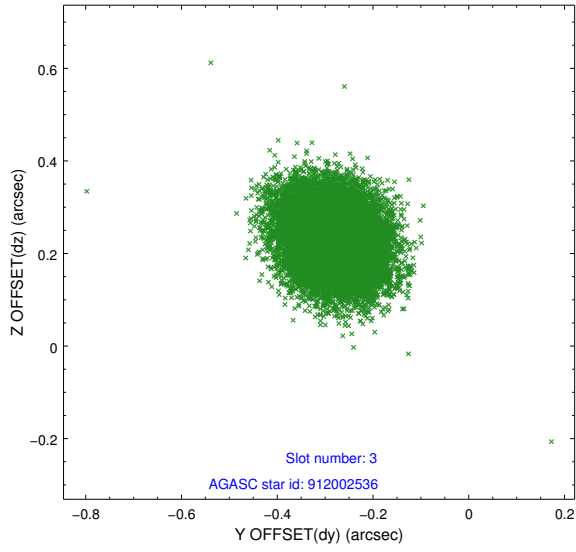


### Slot Statistics

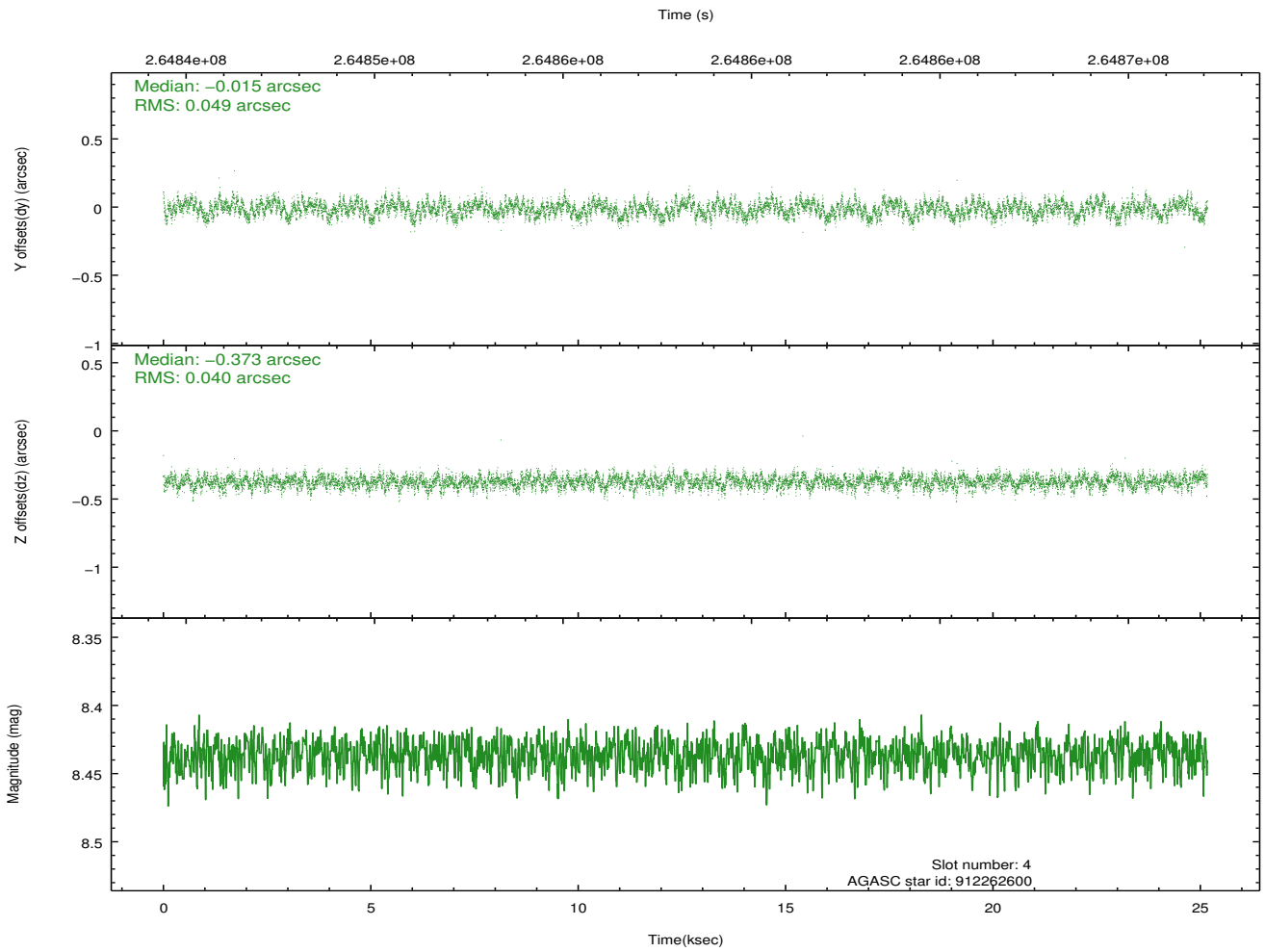
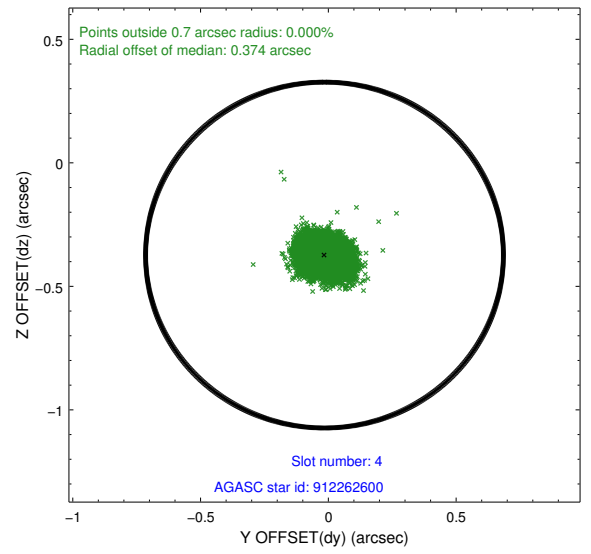
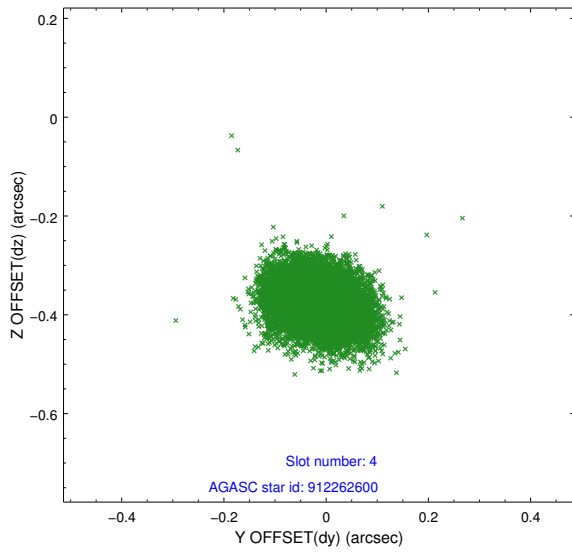
slot	status	id	mag	n_pts	med_dy	med_dz	dr1	dr2	ra	dec	mean_y	mean_z
0	FID	ACIS-S-2	7.10	6137	-0.055	-0.019	0.007	0.012	0.000000	0.000000	-760.07	-1731.86
1	FID	ACIS-S-4	7.21	6136	0.106	0.032	0.006	0.011	0.000000	0.000000	2153.27	176.62
2	FID	ACIS-S-5	7.23	6139	-0.082	-0.004	0.008	0.015	0.000000	0.000000	-1812.83	170.30
3	GUIDE	912002536	9.01	12269	-0.285	0.231	0.092	0.142	332.240220	-27.195673	1691.41	-2105.01
4	GUIDE	912262600	8.44	12272	-0.015	-0.373	0.067	0.108	331.296530	-28.181876	-694.53	1889.22
5	GUIDE	912263160	9.91	12225	0.181	-0.164	0.160	0.248	331.442134	-28.401132	-1590.38	1705.76
6	GUIDE	912393848	6.83	12277	0.082	0.089	0.059	0.096	332.500640	-28.292435	-2310.41	-1593.44
7	GUIDE	912401928	8.67	12270	0.040	0.216	0.077	0.125	332.535185	-27.674082	-245.31	-2429.35

## 2.4 Star Slots

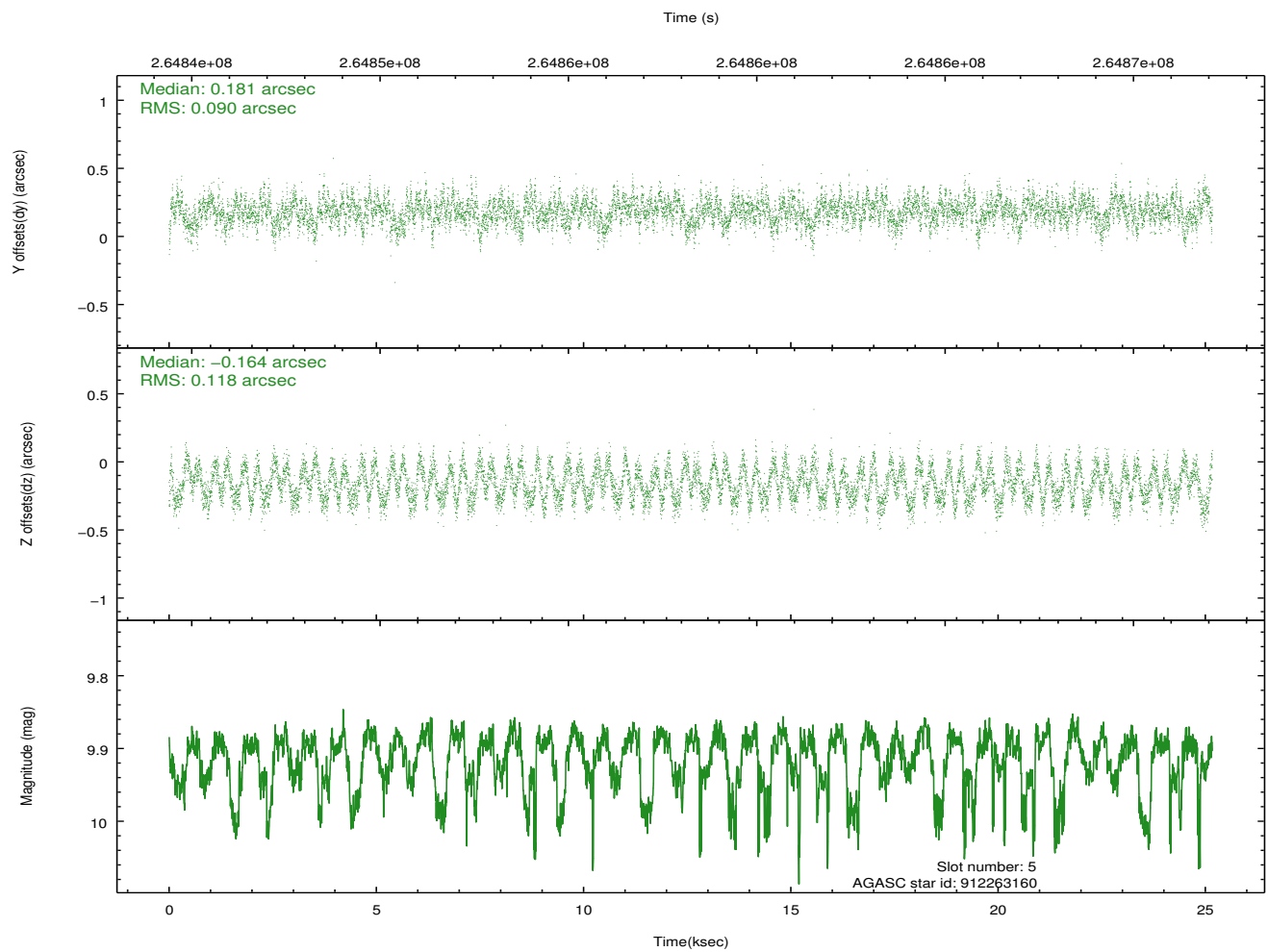
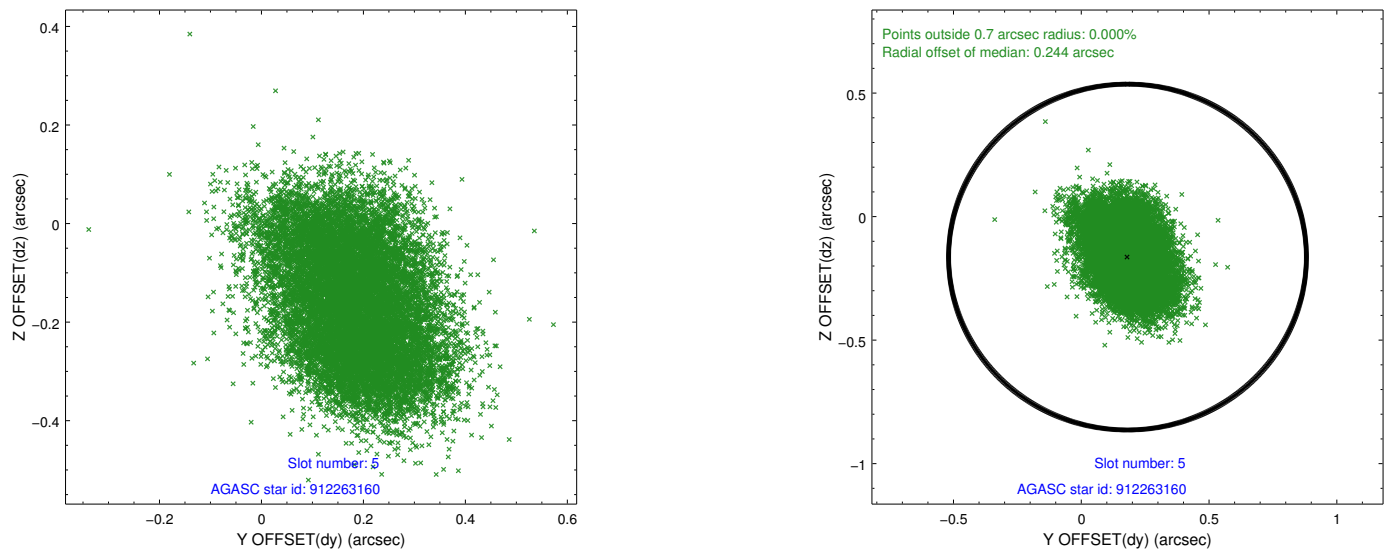
### 2.4.1 Slot 3



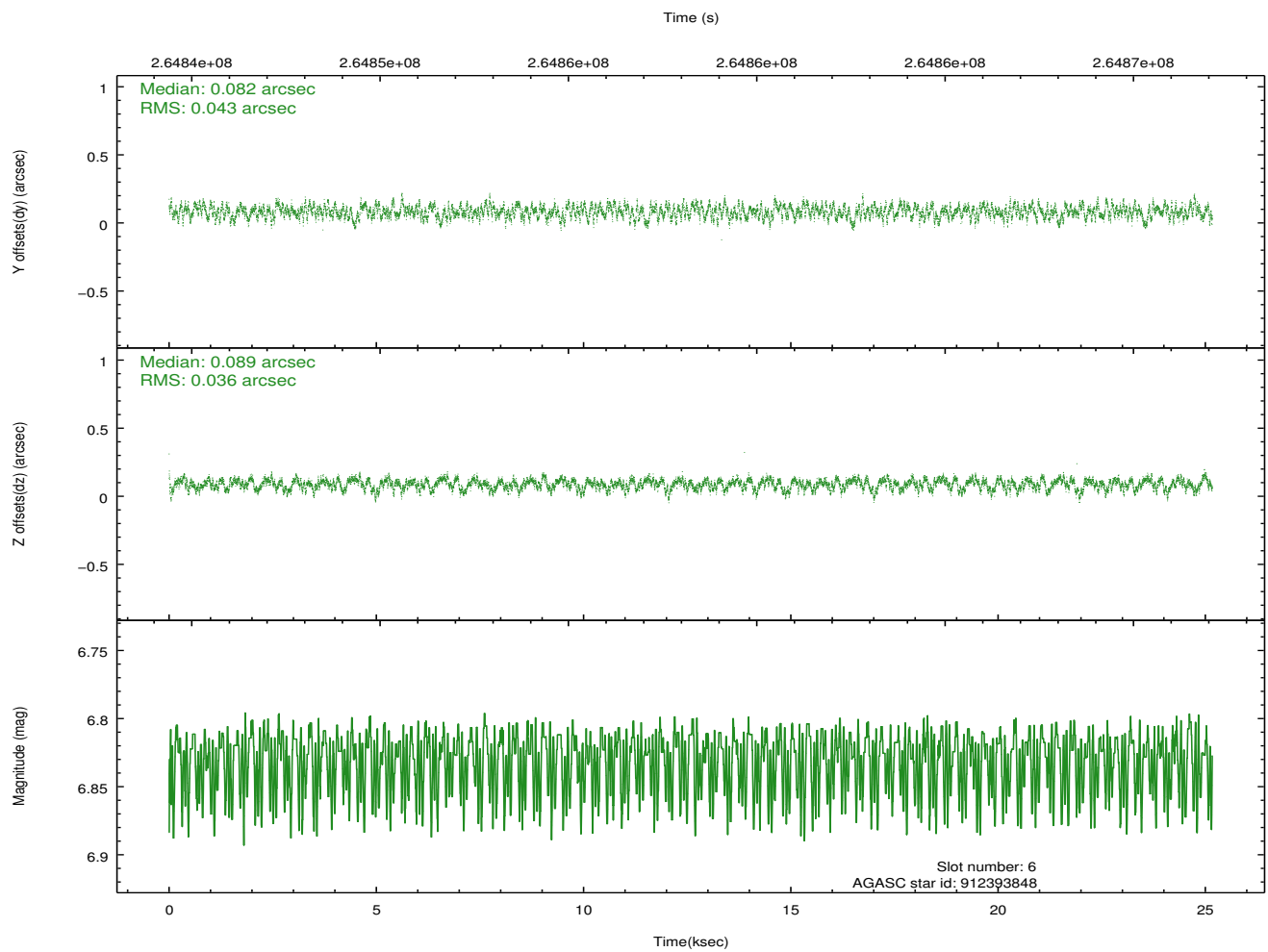
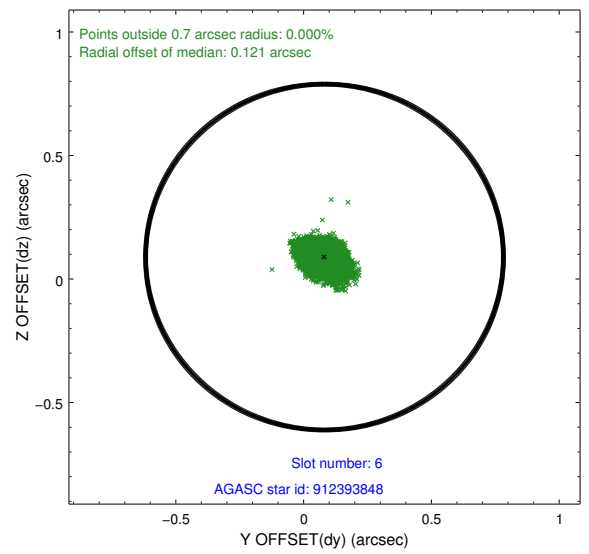
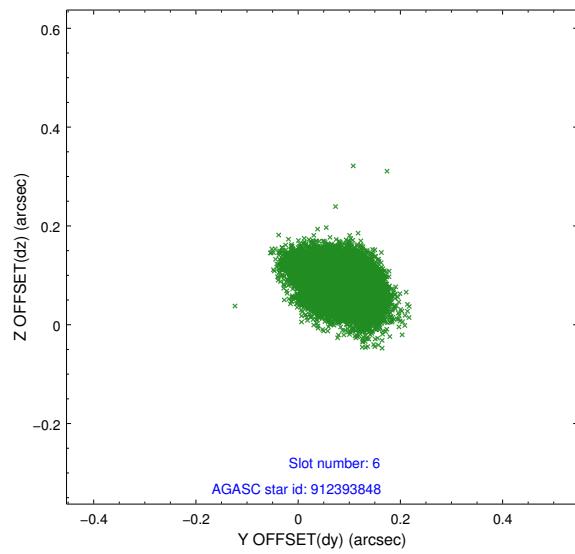
## 2.4.2 Slot 4



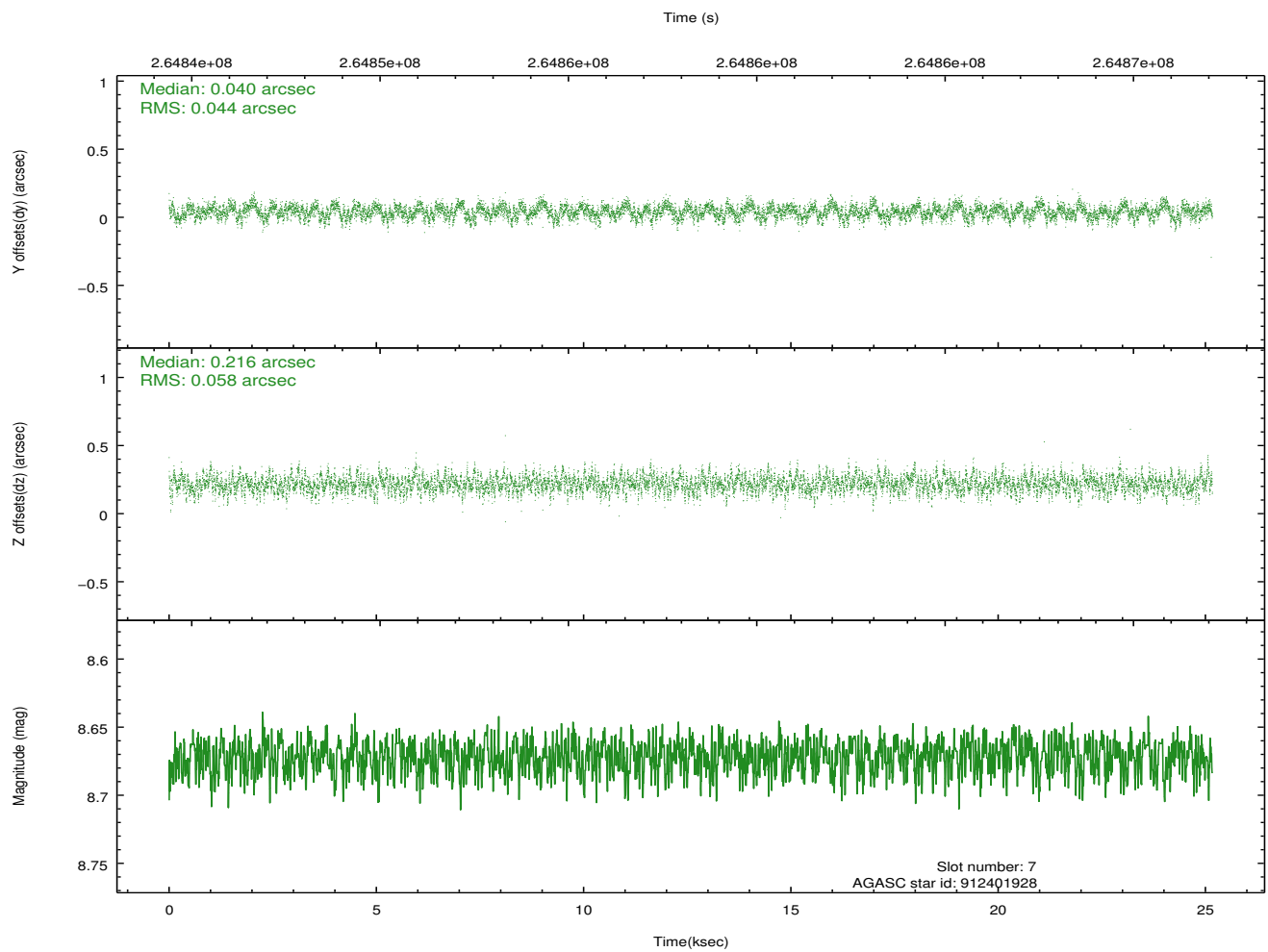
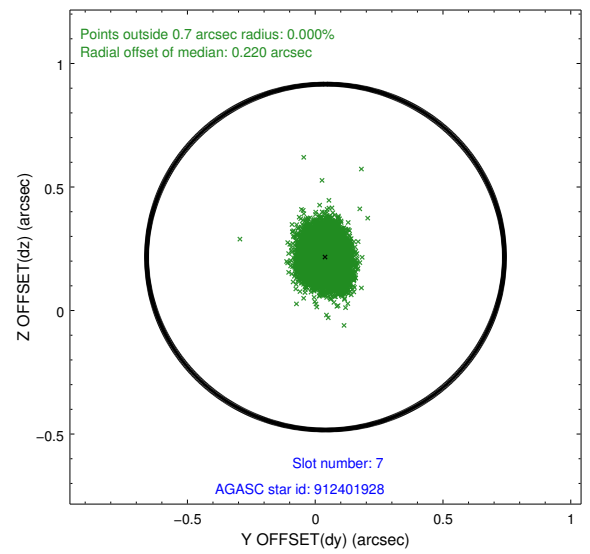
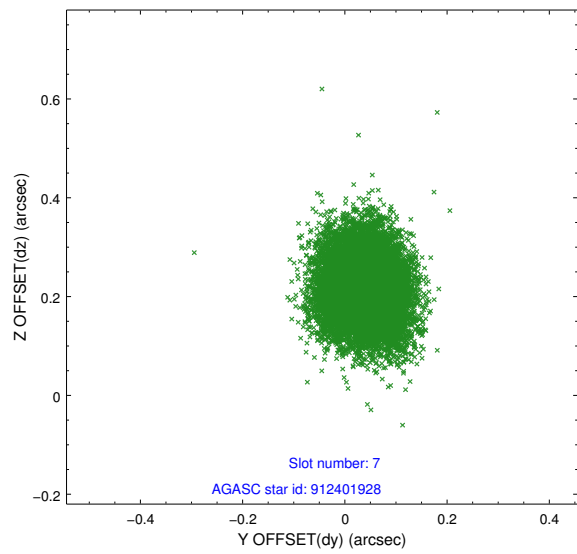
### 2.4.3 Slot 5



## 2.4.4 Slot 6

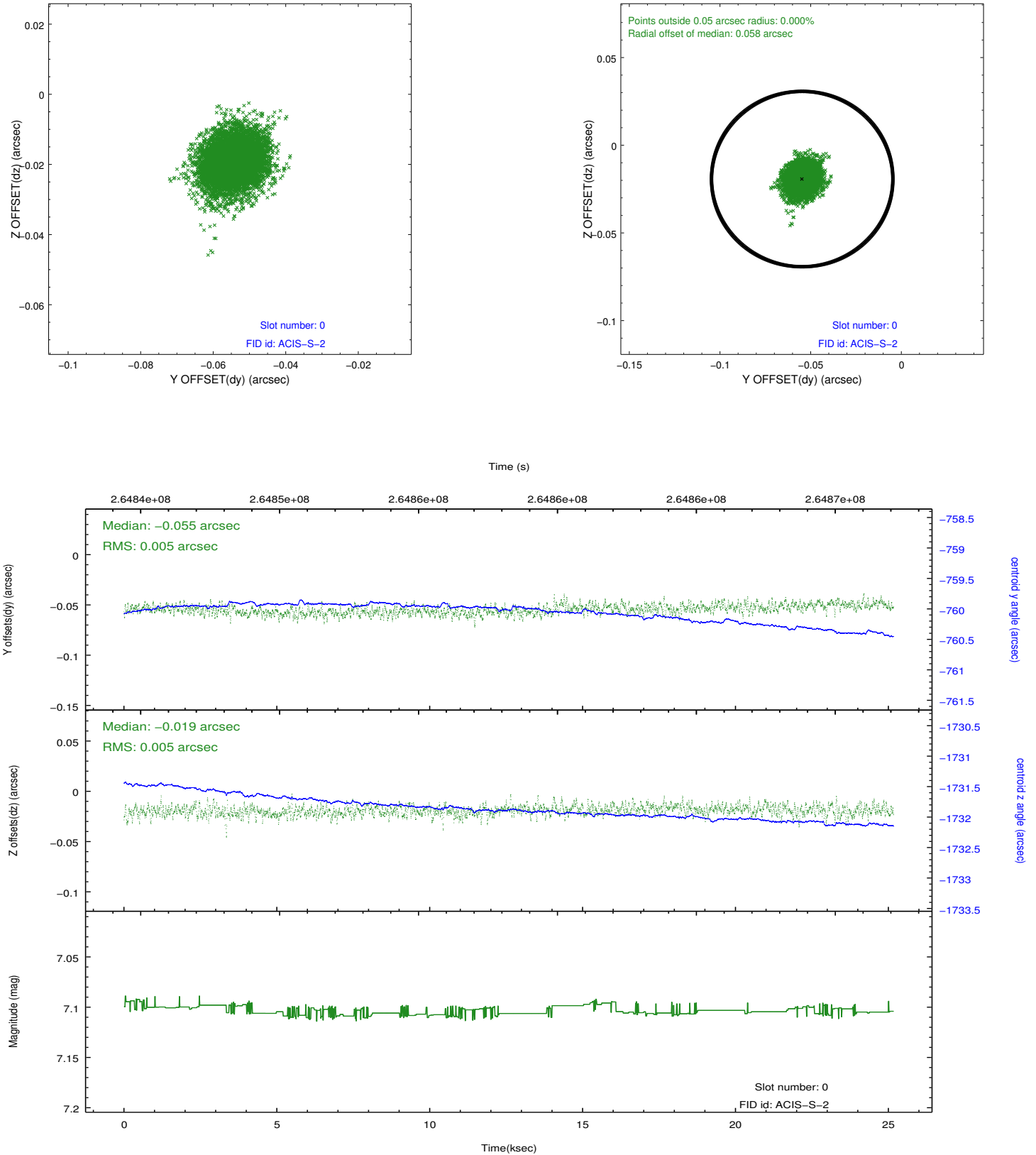


## 2.4.5 Slot 7

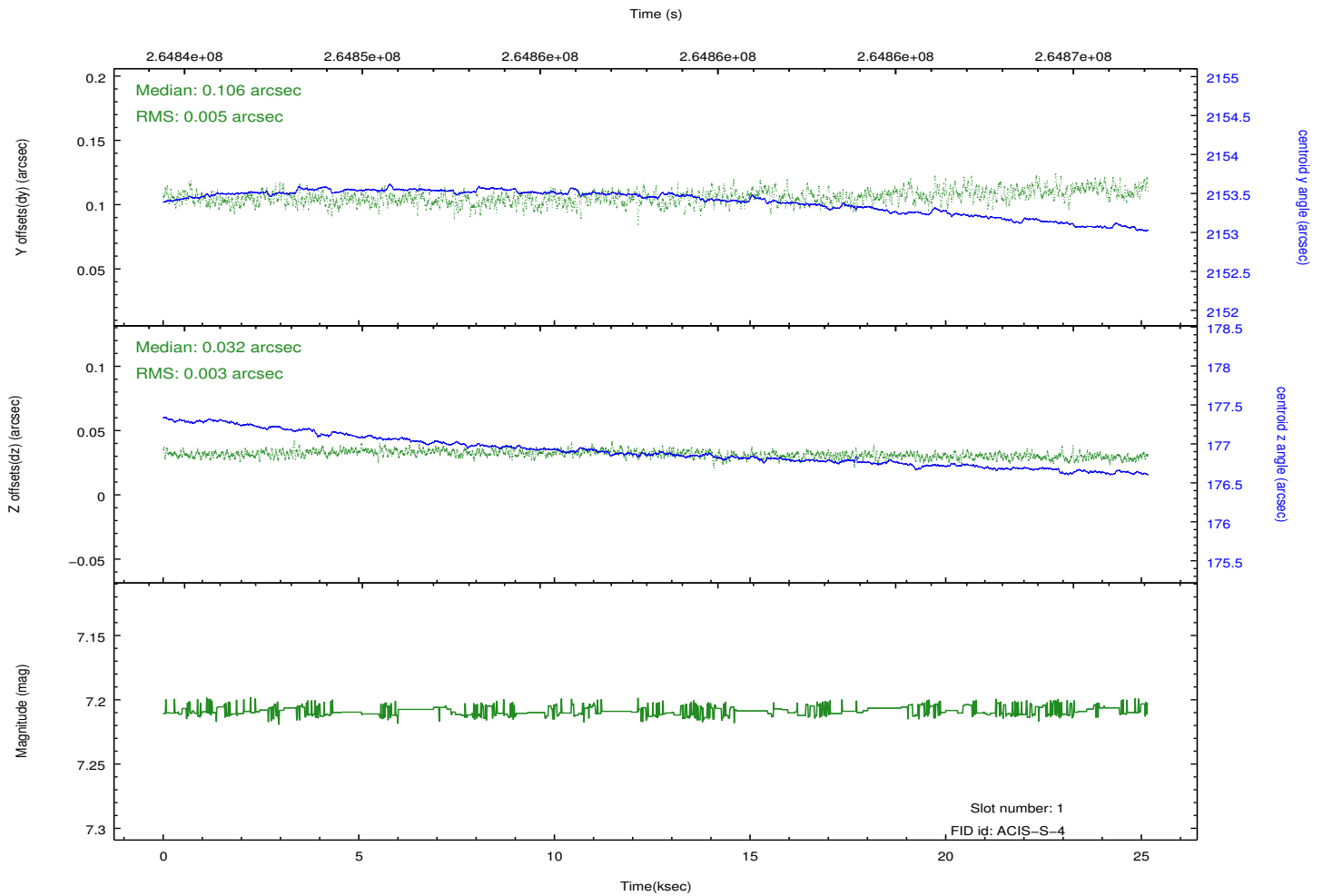
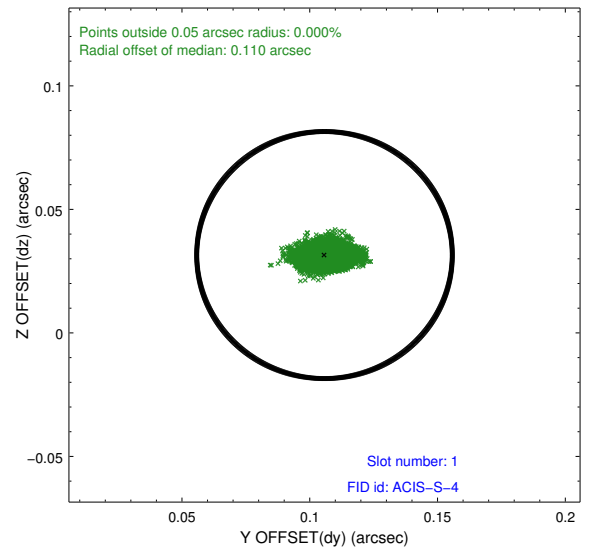
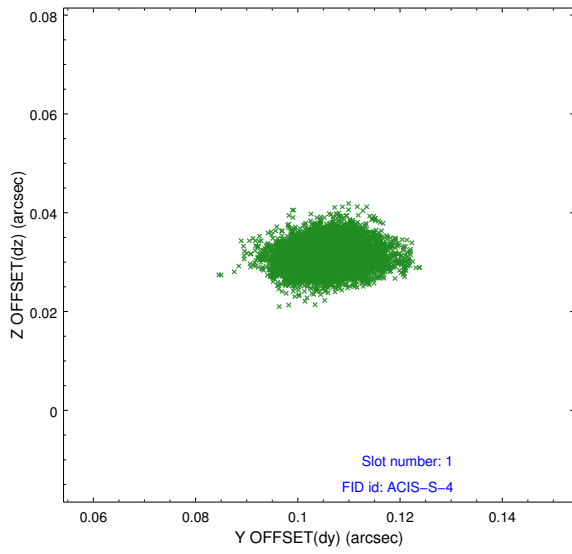


## 2.5 FID Slots

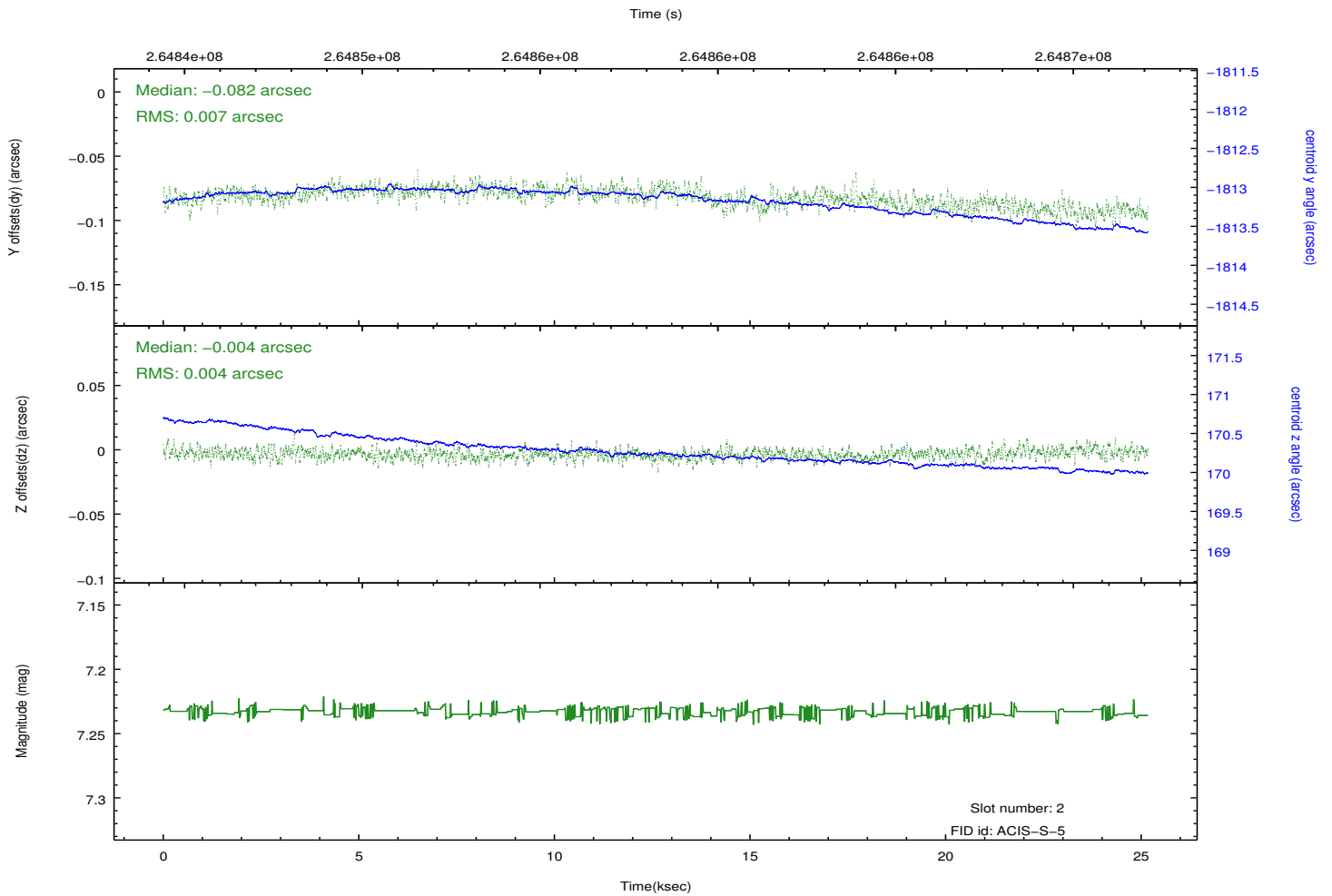
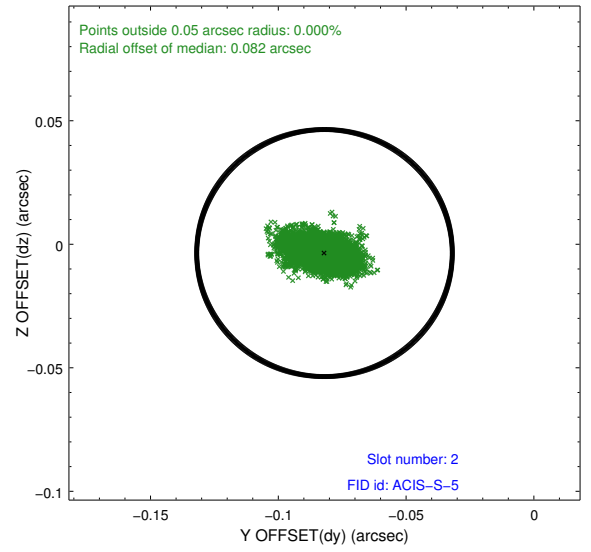
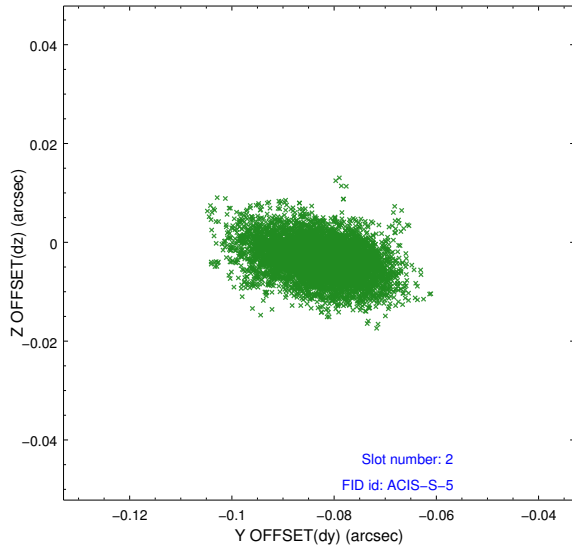
### 2.5.1 Slot 0



## 2.5.2 Slot 1



### 2.5.3 Slot 2



# A Summary

## A.1 Status

V&V Scientist	Jen Lauer
V&V Date (YYYY-MM-DD)	2012.04.03
V&V Edition	1
V&V Disposition and Status	OK
V&V Charge Time	25.0324589

## A.2 Comments

Joint Proposal: CX0-HST