

# V&V Reference Report

## L2 ASCDS Version : 8.5.1.1

Observation 6369 - L2 Version 3  
Chandra X-Ray Center

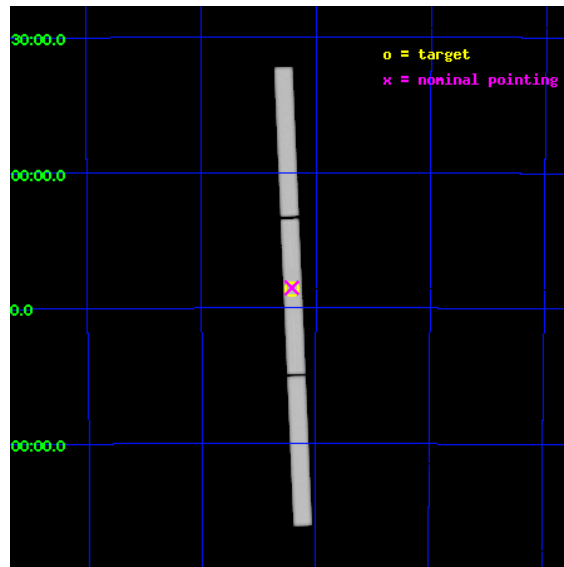
L2 Processing Date : Dec 30 2012

## Contents

<b>1</b>	<b>Front</b>	<b>2</b>
<b>2</b>	<b>OBI</b>	<b>3</b>
2.1	OBI . . . . .	3
2.1.1	Images . . . . .	3
2.1.2	Parameters . . . . .	4
2.1.3	Events . . . . .	4
2.2	Compared Parameters . . . . .	5
2.3	Aspect . . . . .	6
2.4	Star Slots . . . . .	9
2.4.1	Slot 3 . . . . .	9
2.4.2	Slot 4 . . . . .	10
2.4.3	Slot 5 . . . . .	11
2.4.4	Slot 6 . . . . .	12
2.4.5	Slot 7 . . . . .	13
2.5	FID Slots . . . . .	14
2.5.1	Slot 0 . . . . .	14
2.5.2	Slot 1 . . . . .	15
2.5.3	Slot 2 . . . . .	16
<b>3</b>	<b>Gratings</b>	<b>17</b>
3.1	LETG Arm . . . . .	17
<b>A</b>	<b>Summary</b>	<b>19</b>
A.1	Status . . . . .	19
A.2	Comments . . . . .	19

# 1 Front

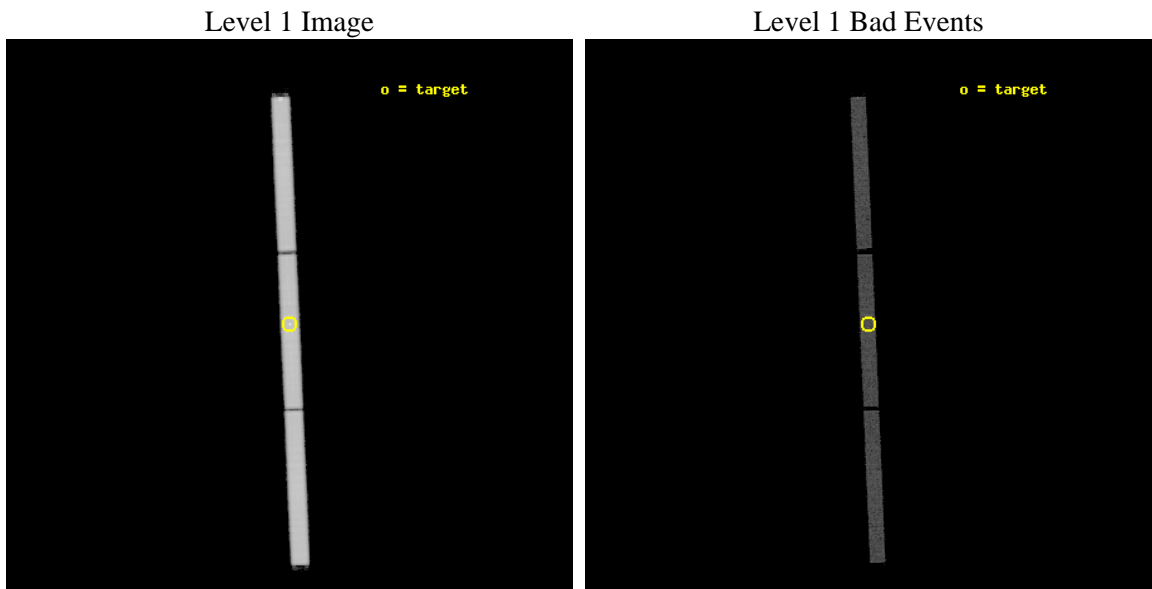
seq_num	500572	Sequence number
obs_id	6369	Observation id
title	Spectra of Neutron Stars with Strongly Magnetized Hydrogen Atmospheres	Proposal title
observer	Prof. Marten van Kerkwijk	Principal investigator
object	RX J0720.4-3125	Source name
ra_targ	110.104167	Observer's specified target RA [deg]
dec_targ	-31.430611	Observer's specified target Dec [deg]
ra_nom	110.10457861512	Nominal RA [deg]
dec_nom	-31.425904831186	Nominal Dec [deg]
roll_nom	87.467539052039	Nominal Roll [deg]
revision	3	Processing version of data
ontime	26255.376208633	[s]
livetime	26039.581358292	Ontime multiplied by DTCOR
l2events	1831691	Number of level 2 events



## 2 OBI

### 2.1 OBI

#### 2.1.1 Images



### 2.1.2 Parameters

obi_num	1	Obi number	sched_exp_time	26100.000000	[s] Scheduled observation exposure time
ascdsver	8.5.1.1	Processing system revision	ontime	26255.376208633	[s]
caldbver	4.5.5	&#160	l1events	2550306	Number of level 1 events
date	2012-12-30T06:33:08	Date and time of file creation			
revision	3	Processing version of data			

### 2.1.3 Events

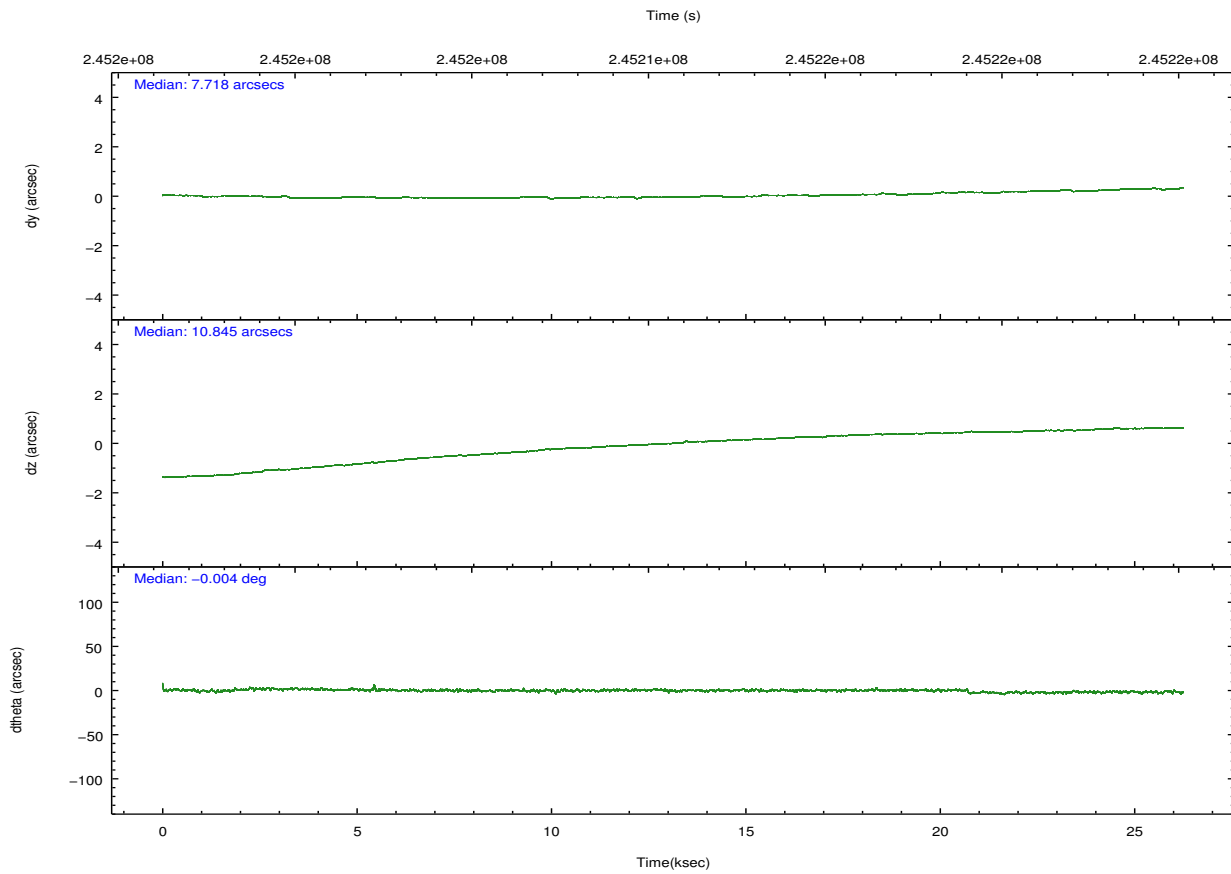
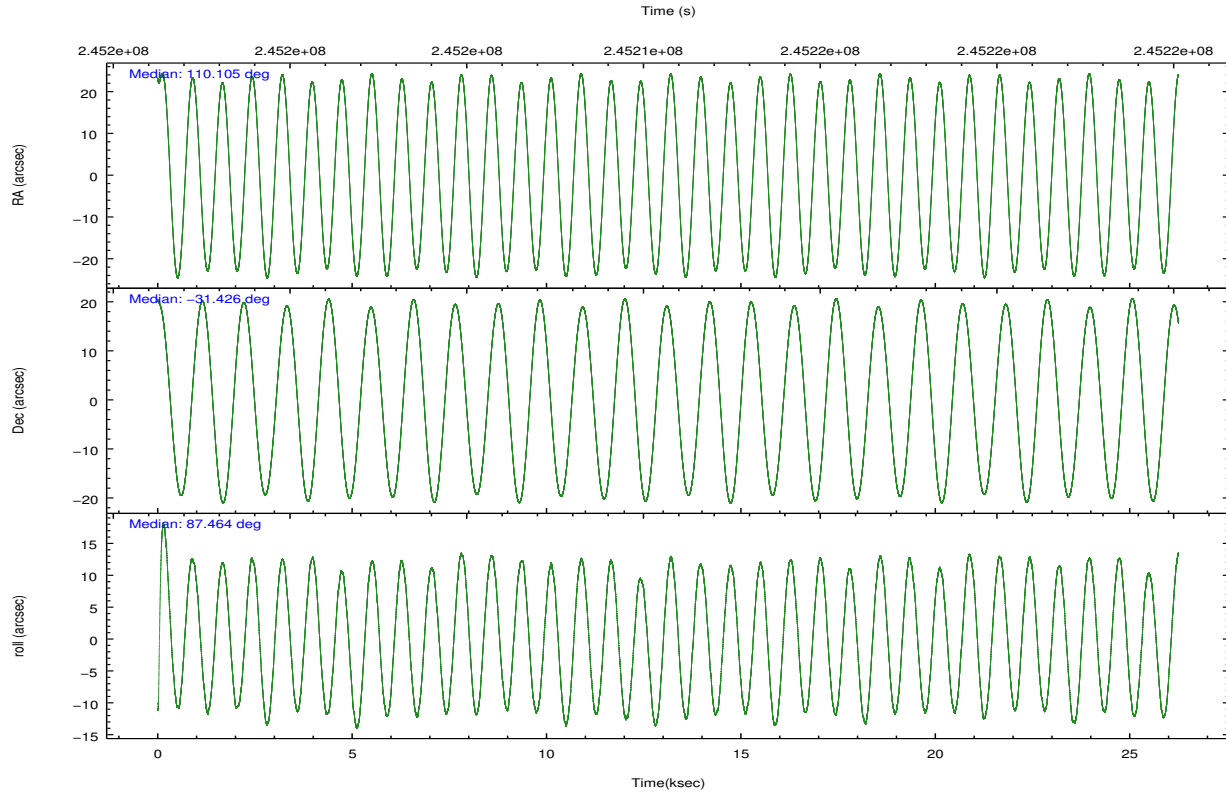
Level 1 Events

	<b>segment 1</b>	<b>segment 2</b>	<b>segment 3</b>
level 1 events	868590	834599	847117
rejected events	56528	54054	54515
rejected %	6%	6%	6%

## 2.2 Compared Parameters

Parameter	Planned	Actual	Parameter	Planned	Actual
Instrument	HRC	HRC	Obspar format version number	7	7
Detector	HRC-S	HRC-S	Obspar file type	PREDICTED	ACTUAL
Grating	LETG	LETG	Obspar update status	NONE	UPDATED
Data mode	OBSERVING	OBSERVING			
Observation mode	POINTING	POINTING			
[deg] Pointing RA	110.121484	110.1045786151234			
[deg] Pointing Dec	-31.450635	-31.42590483118631			
[deg] Pointing Roll	87.409035	87.46753905203911			
[mm] SIM focus pos	-1.429586	-1.428180813131781			
[mm] SIM defocus	0.1037507710433287	0.1051558262725154			
[mm] SIM translation stage pos	250.455976	250.466033080201			
[mm] SIM translation stage offset	0	-0.01005468664627074			
[s] Observation start time (MET)	245197724.184000	245196681.793			
Observation start date	2005-10-08T22:27:40	2005-10-08T22:11:21			
[s] Observation end time (MET)	245223824.184000	245224572.04428			
Observation end date	2005-10-09T05:42:40	2005-10-09T05:56:12			

## 2.3 Aspect

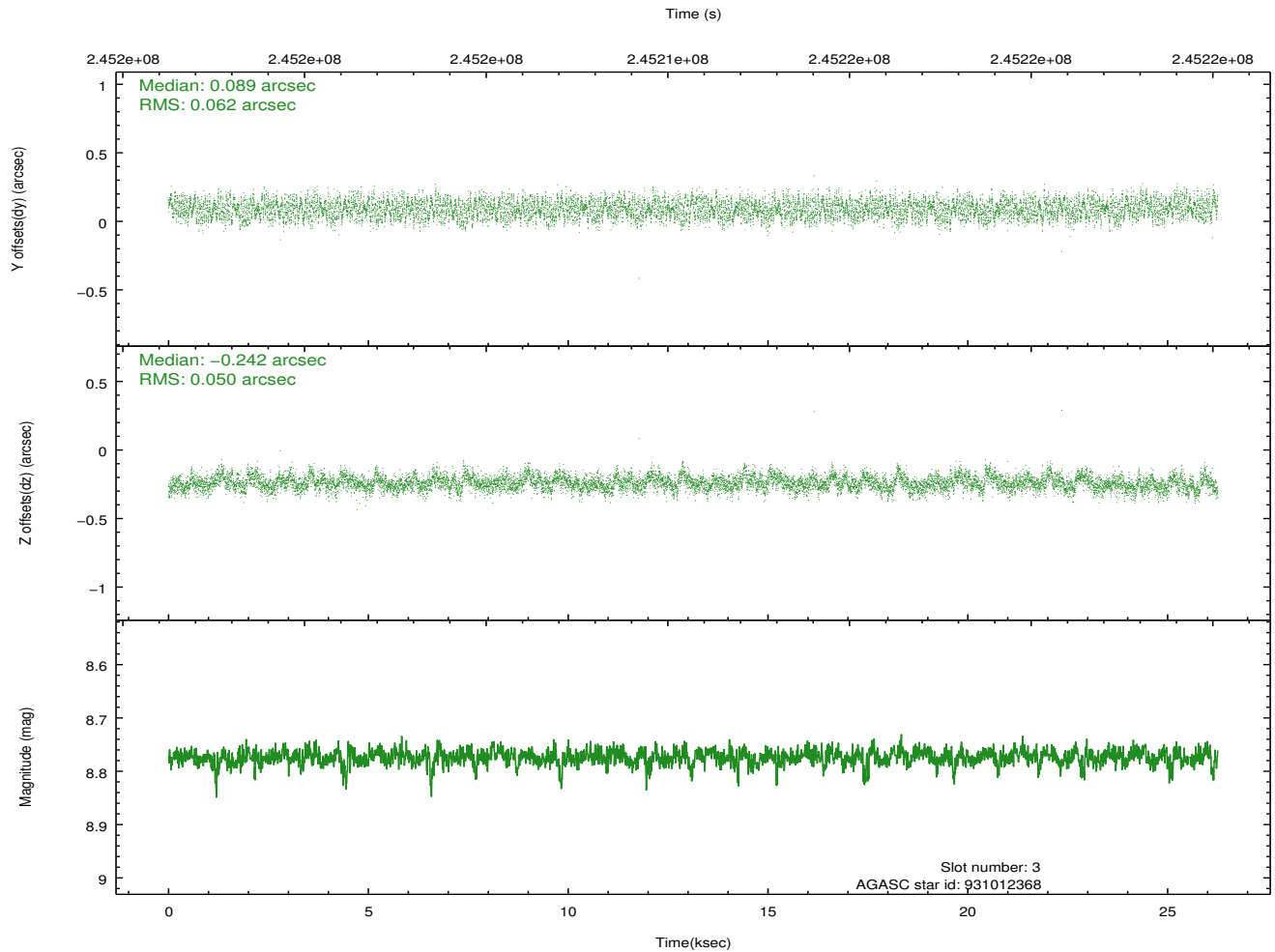
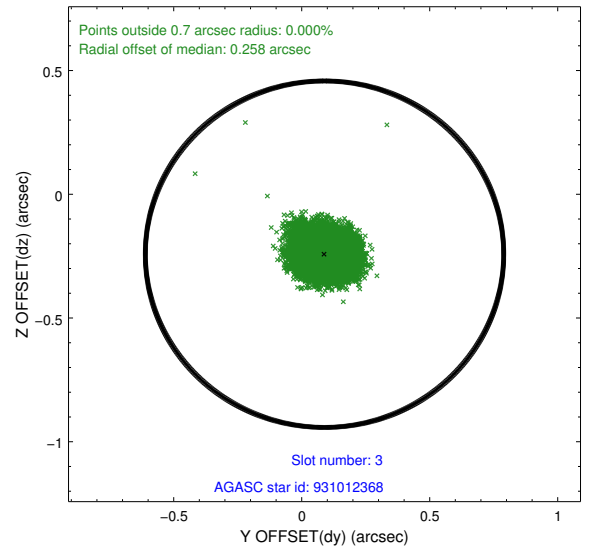
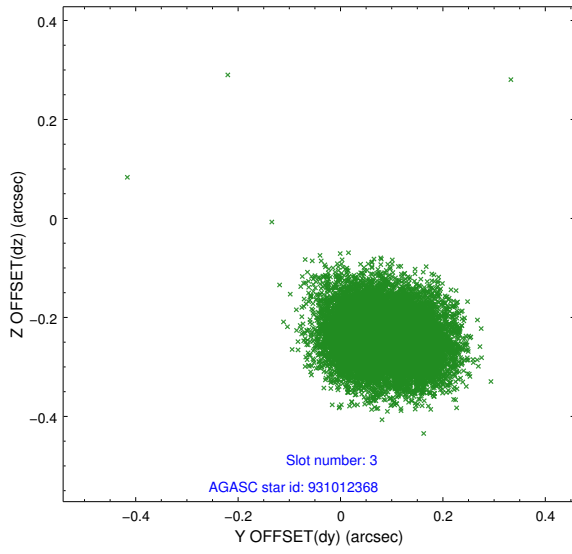


### Slot Statistics

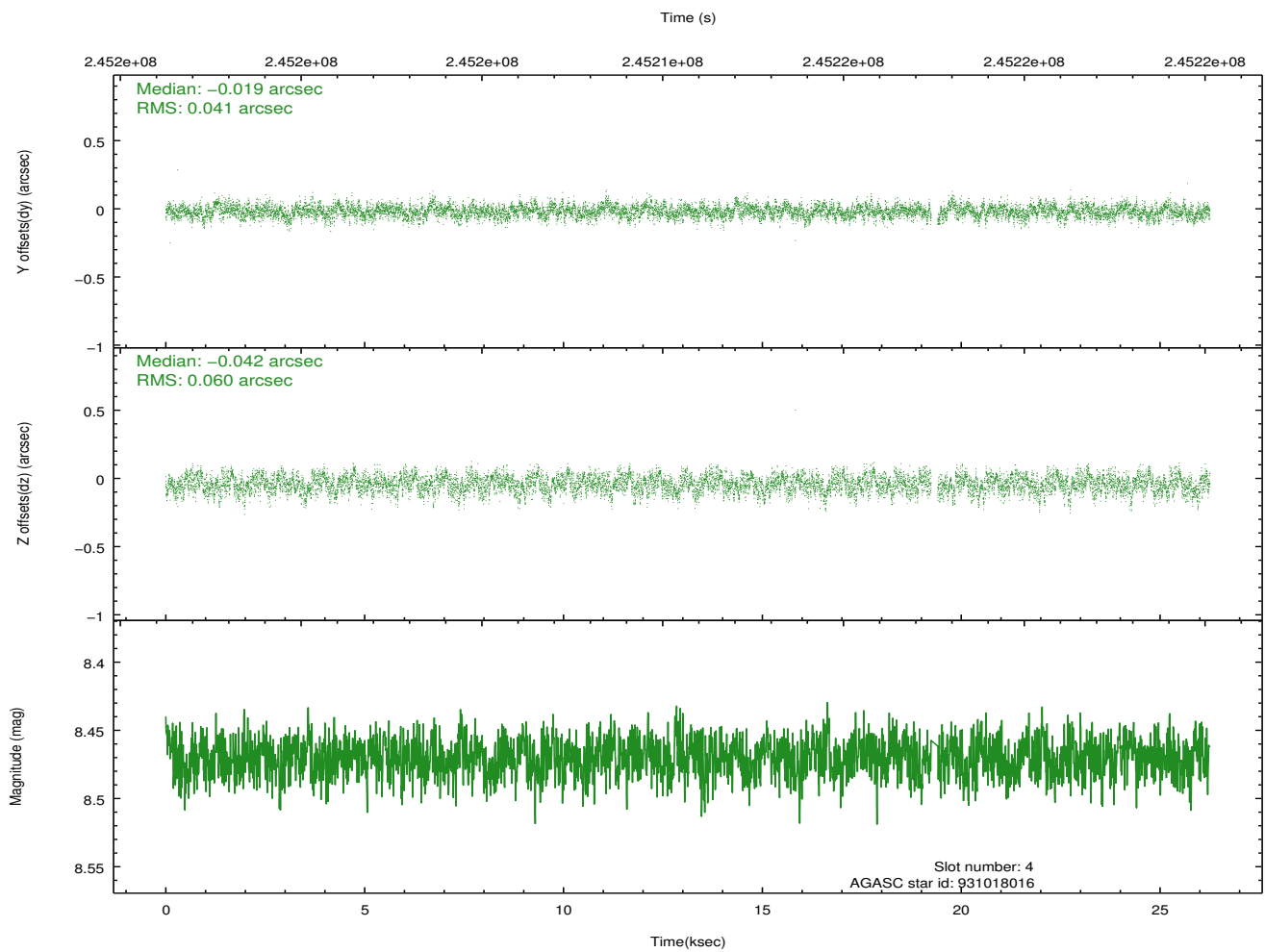
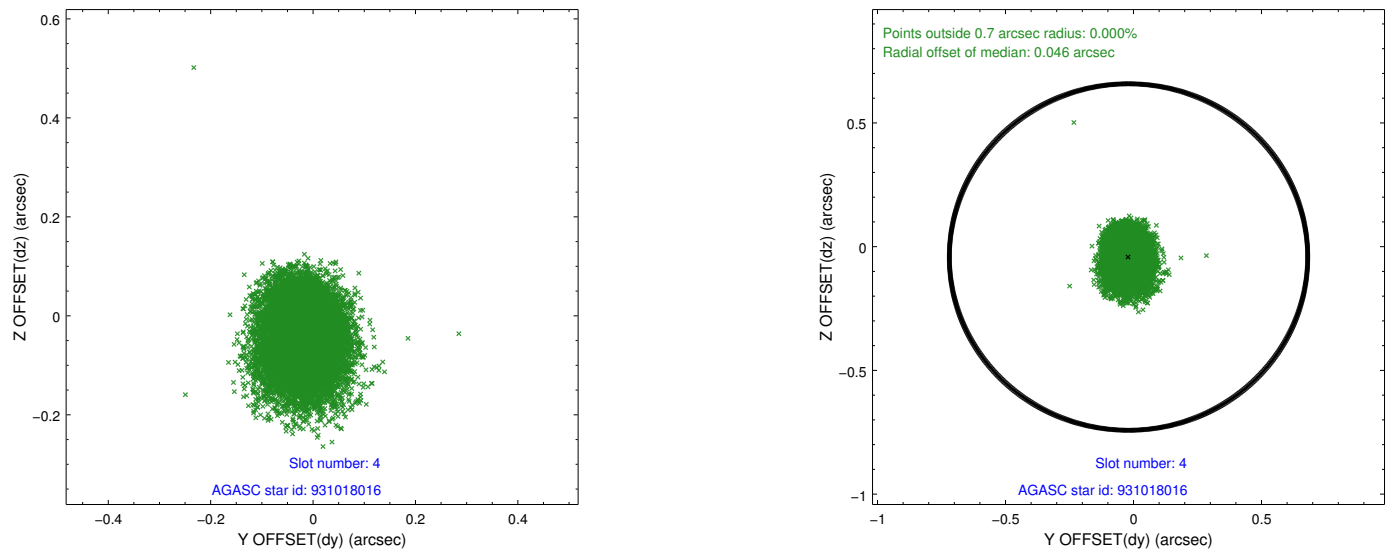
slot	status	id	mag	n_pts	med_dy	med_dz	dr1	dr2	ra	dec	mean_y	mean_z
0	FID	HRC-S-1	7.02	6404	0.078	-0.134	0.005	0.019	0.000000	0.000000	-1161.97	-459.40
1	FID	HRC-S-2	7.01	6403	0.117	-0.132	0.027	0.045	0.000000	0.000000	1237.57	-452.08
2	FID	HRC-S-4	6.99	6403	0.208	-0.039	0.025	0.046	0.000000	0.000000	1236.60	572.75
3	GUIDE	931012368	8.77	12790	0.089	-0.242	0.085	0.133	109.359817	-31.783345	-1310.12	2273.72
4	GUIDE	931018016	8.47	12729	-0.019	-0.042	0.077	0.125	109.684535	-31.226562	742.06	1380.28
5	GUIDE	931025288	8.45	12804	-0.005	-0.070	0.068	0.108	109.511084	-30.937793	1753.88	1966.39
6	GUIDE	931695048	7.37	12805	-0.007	0.170	0.068	0.104	110.648539	-32.046020	-2072.21	-1703.49
7	GUIDE	931160352	8.65	12807	-0.058	0.183	0.074	0.119	110.268138	-30.864891	2126.60	-357.07

## 2.4 Star Slots

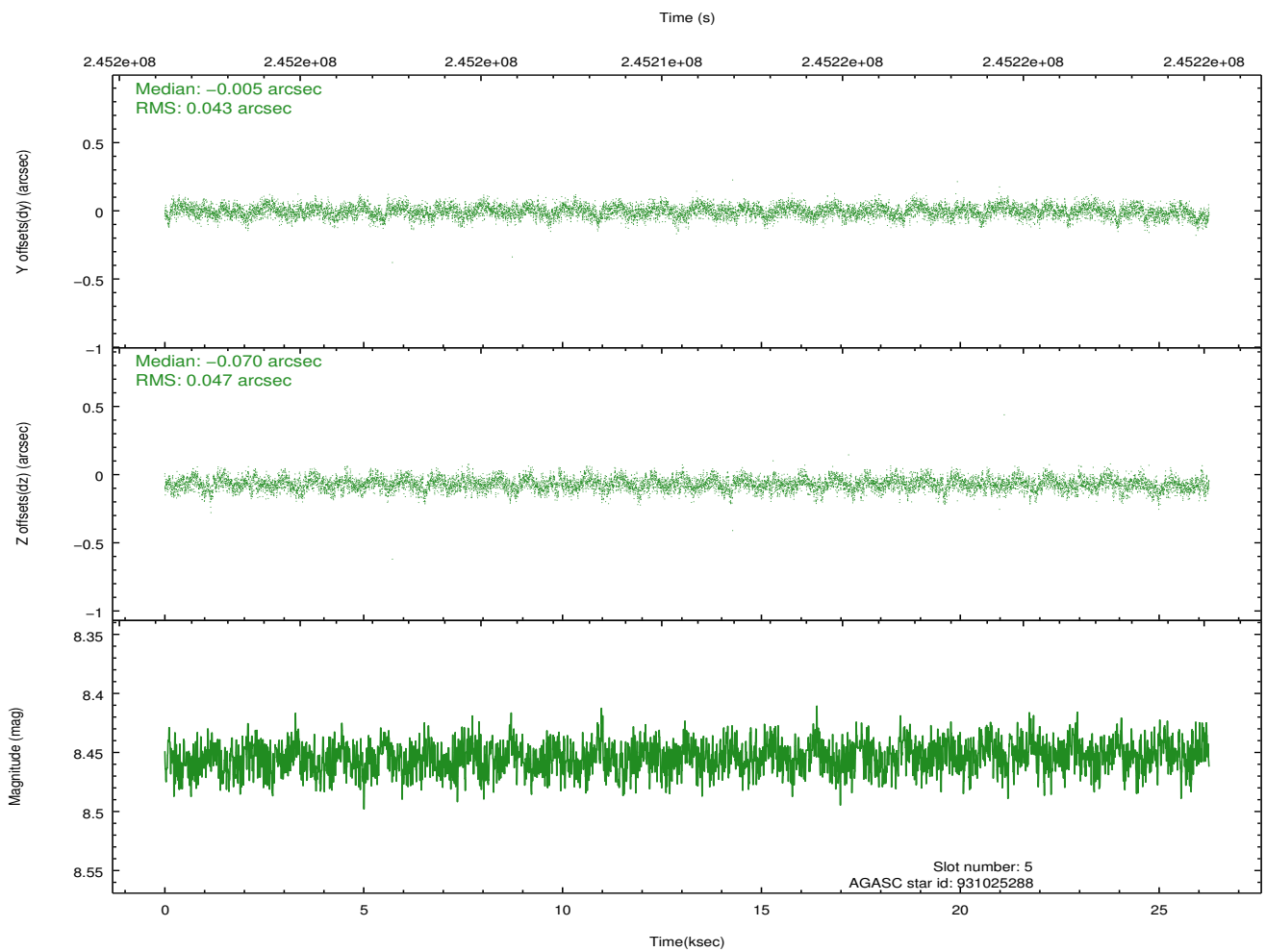
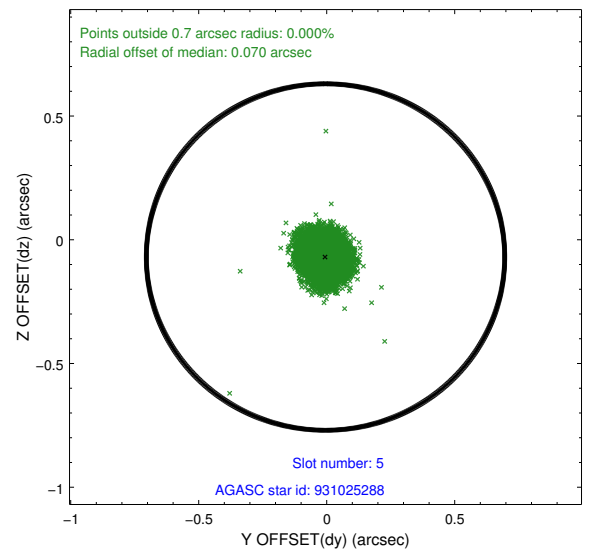
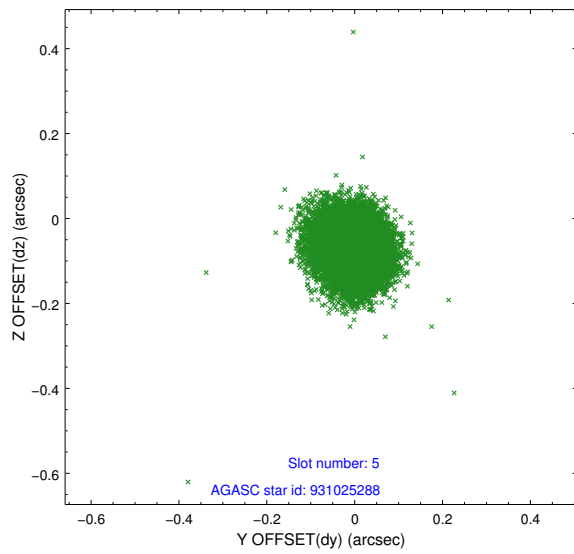
### 2.4.1 Slot 3



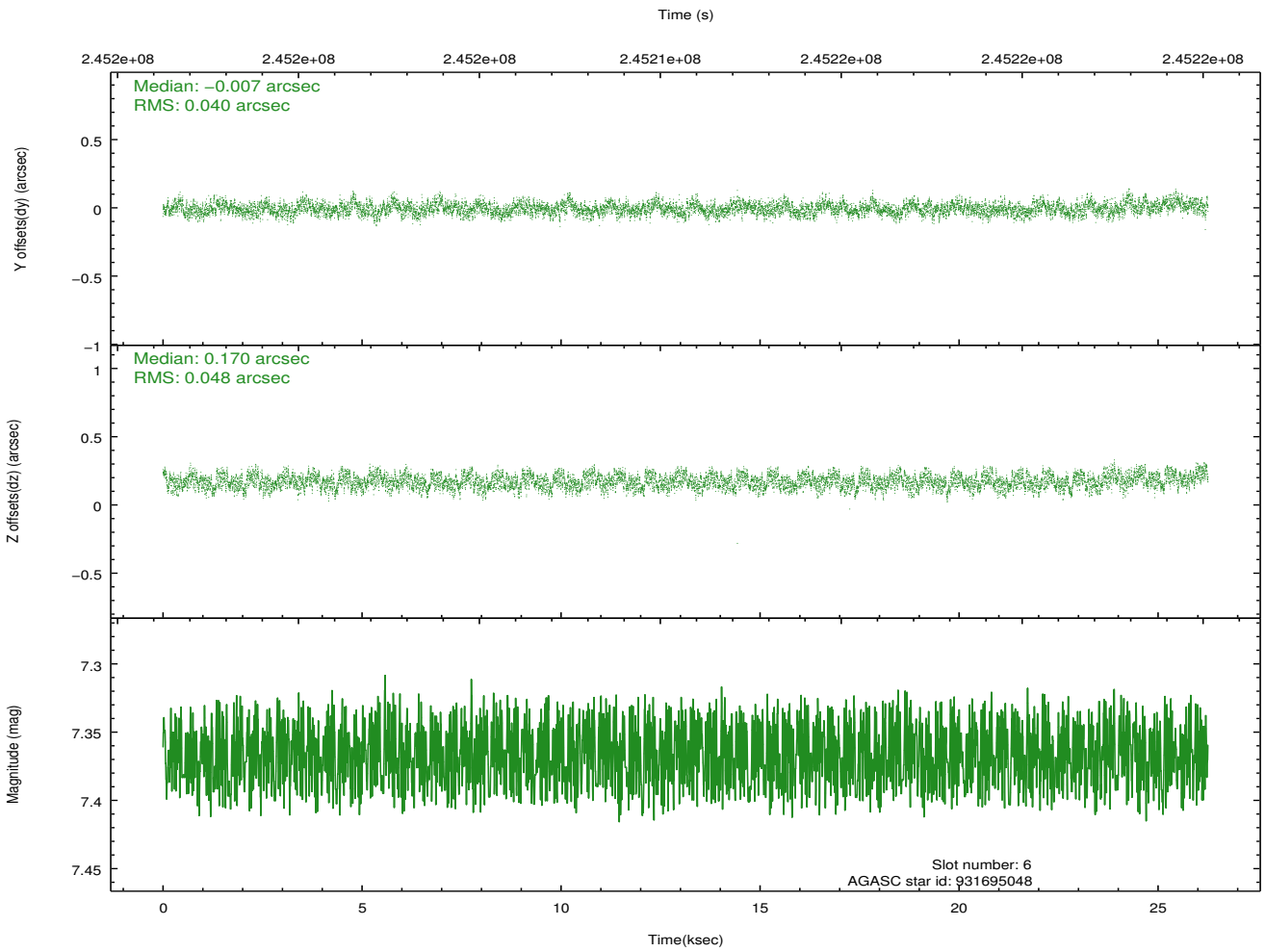
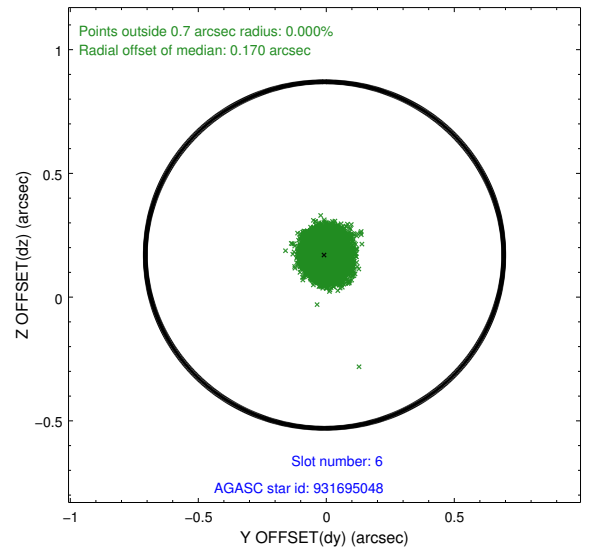
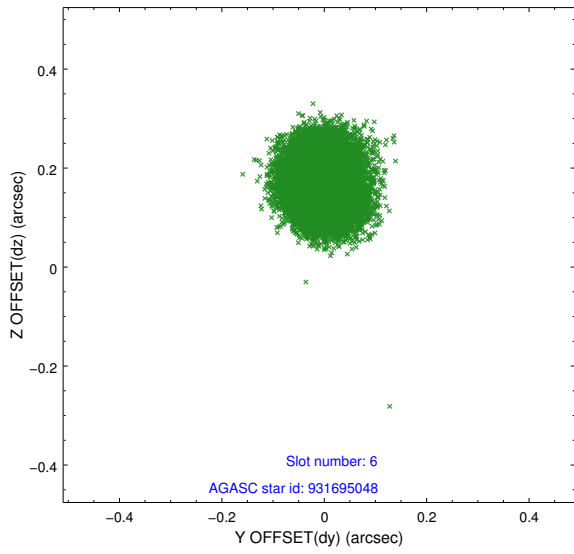
## 2.4.2 Slot 4



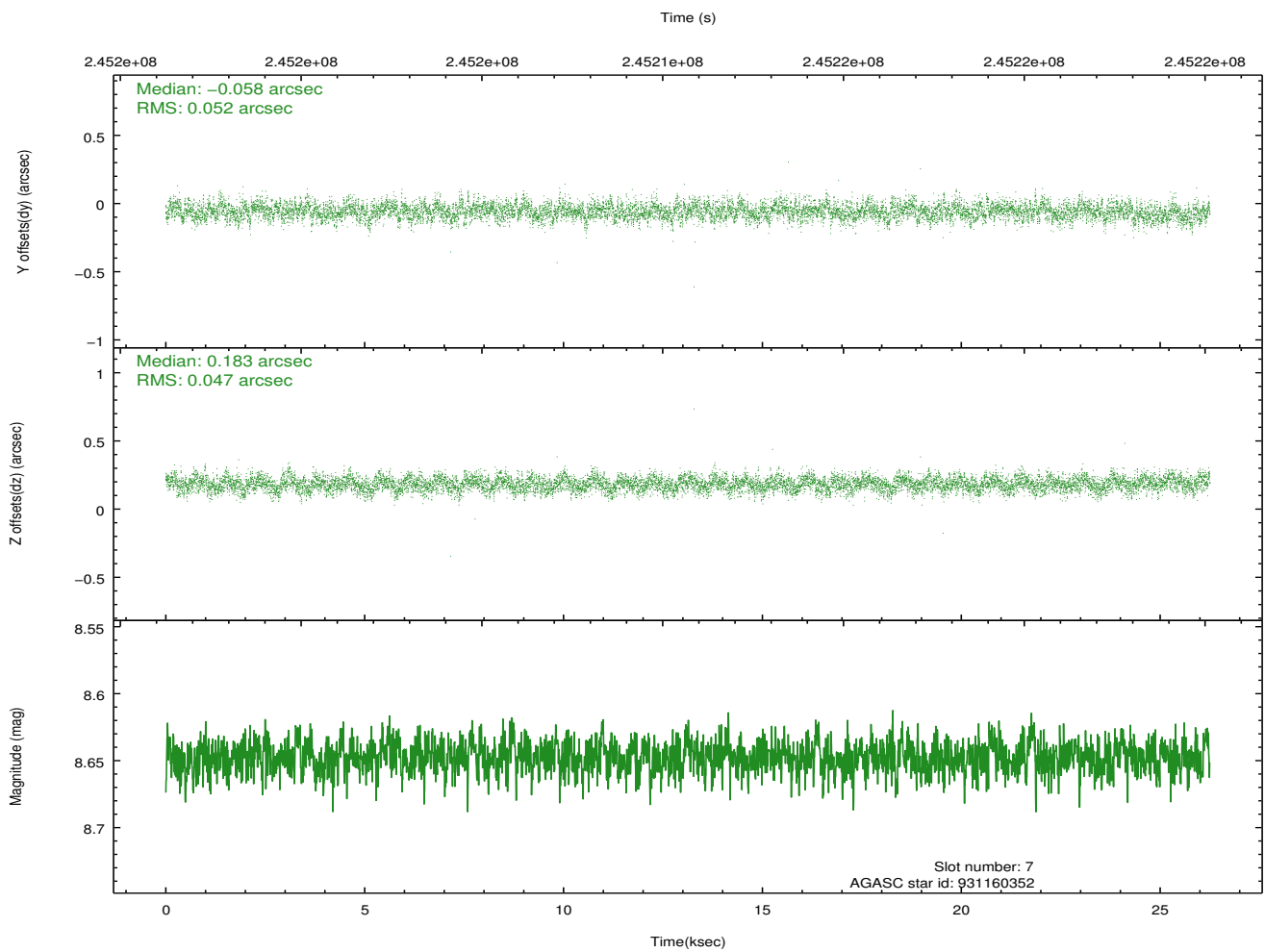
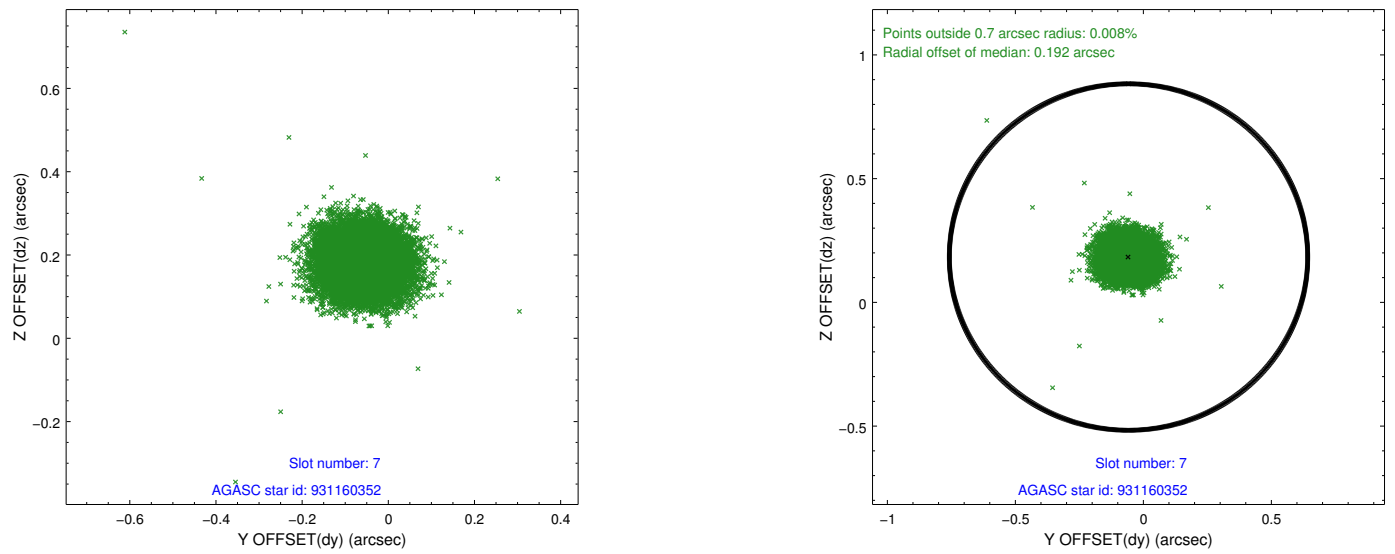
### 2.4.3 Slot 5



### 2.4.4 Slot 6

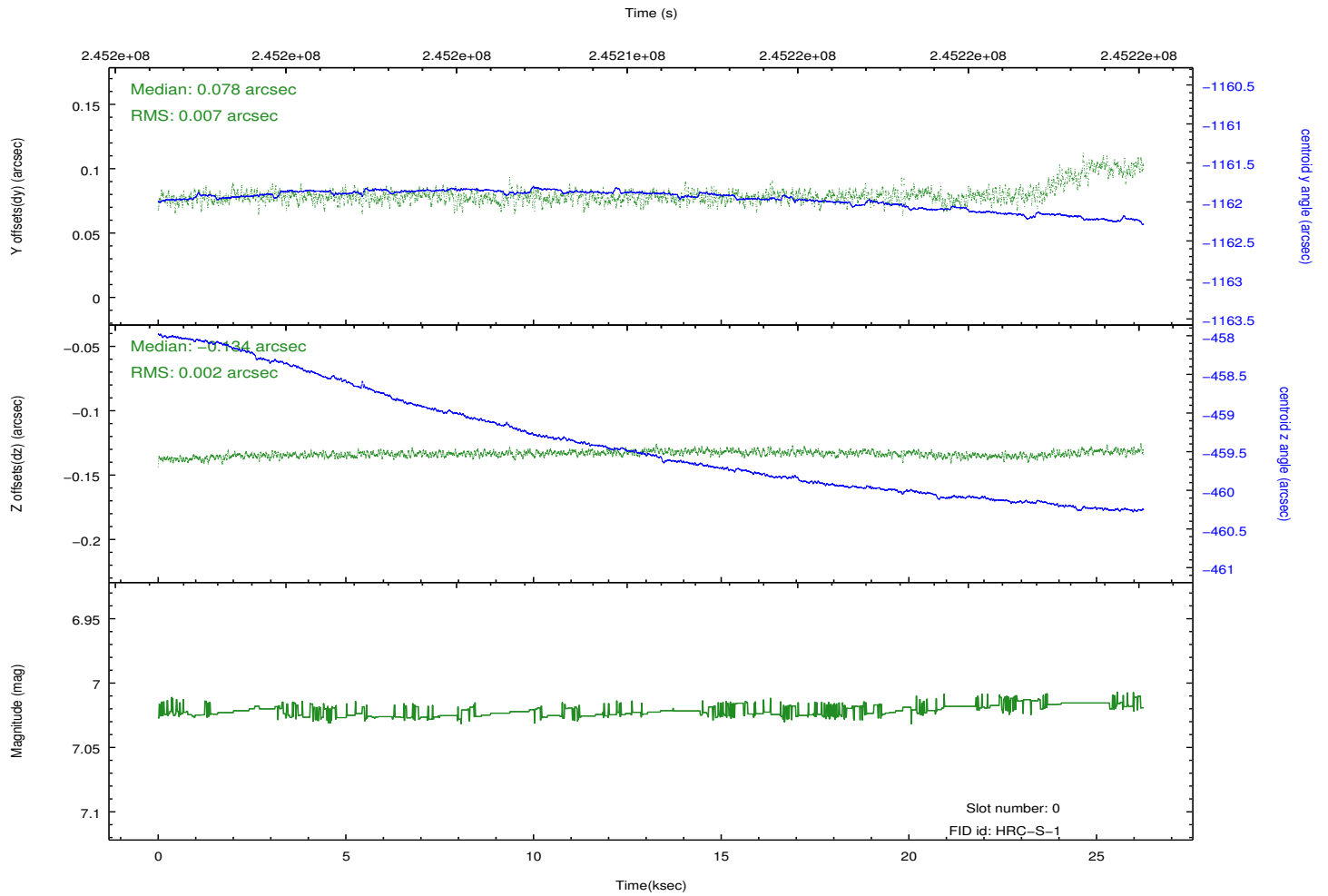
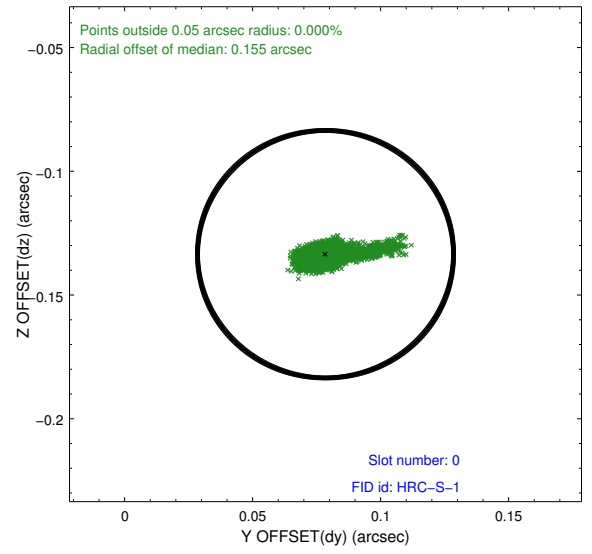
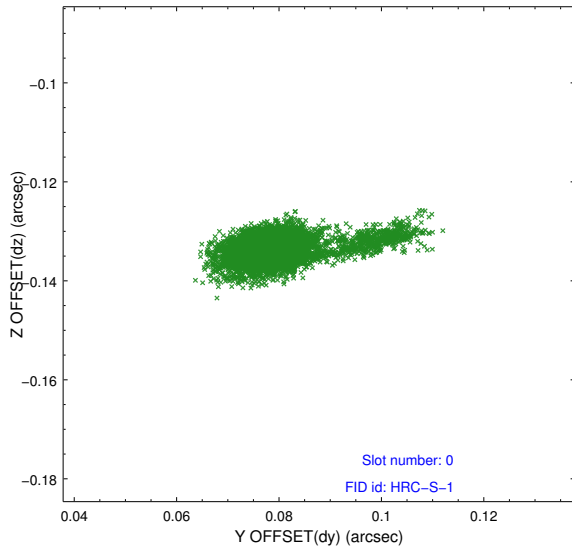


## 2.4.5 Slot 7

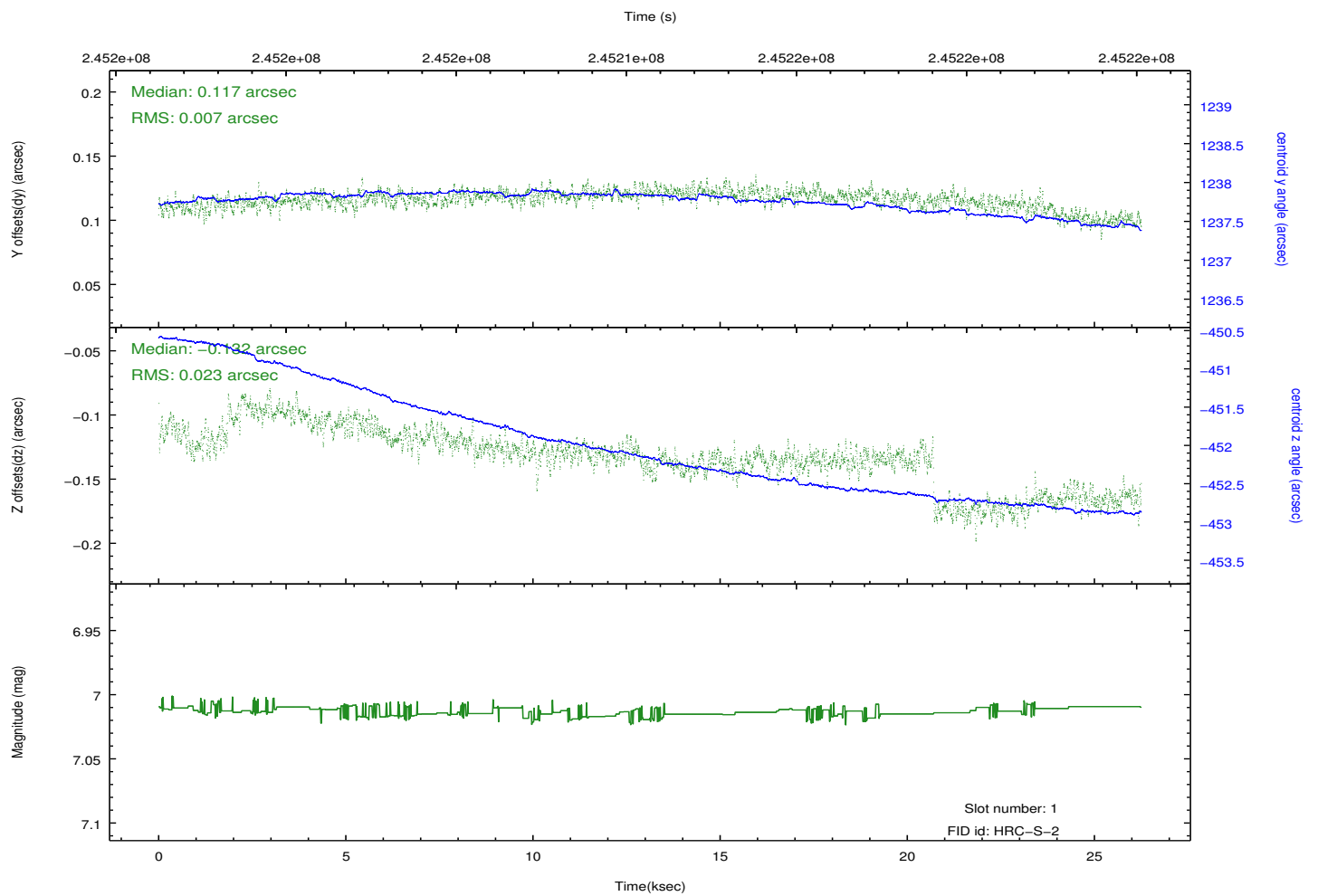
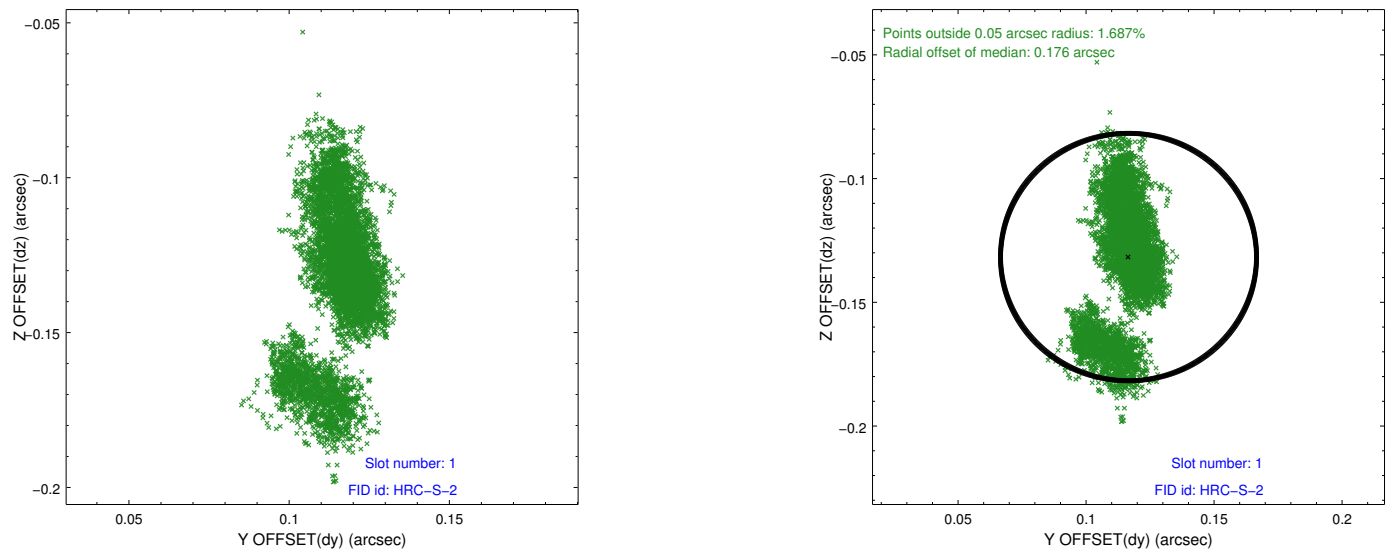


## 2.5 FID Slots

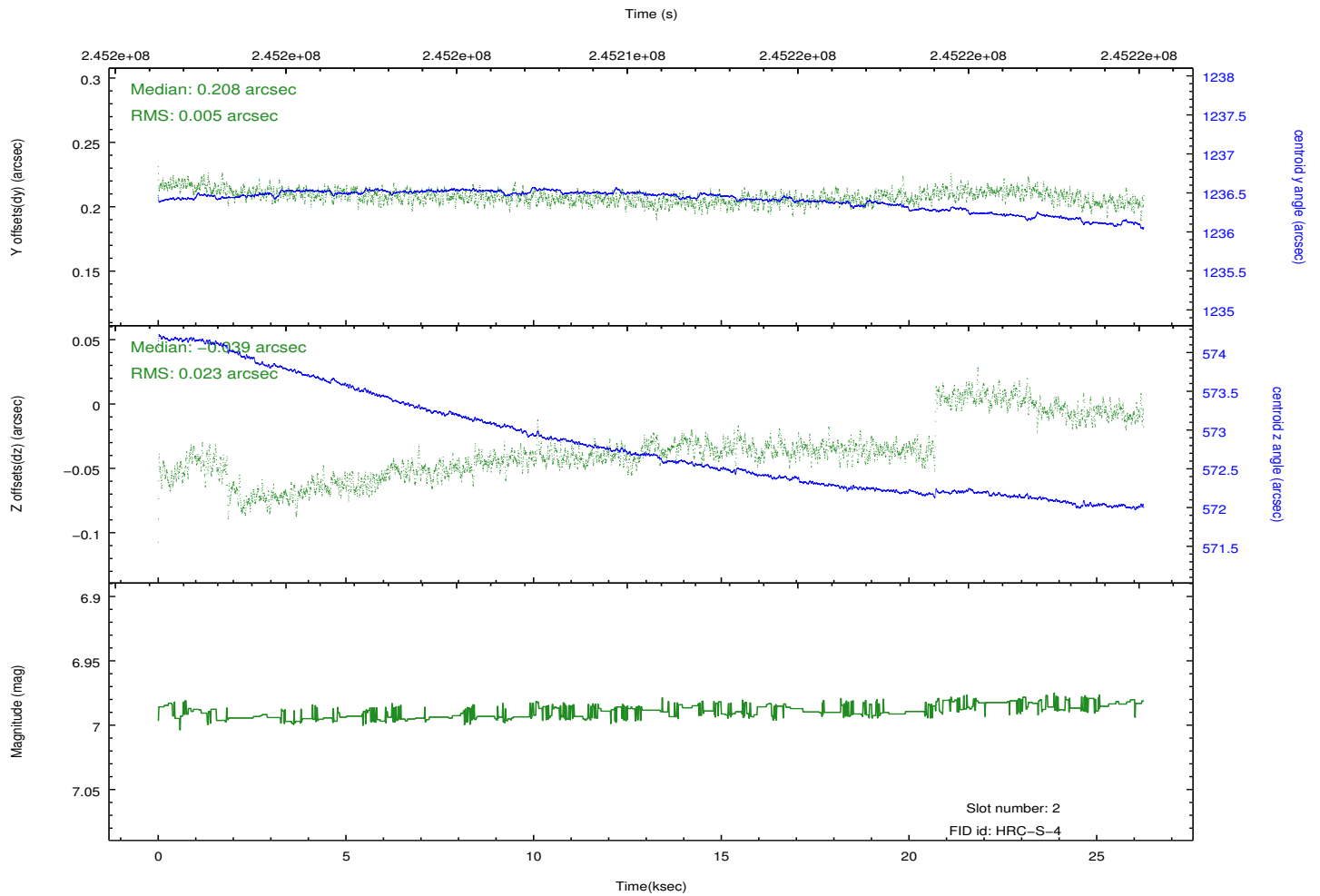
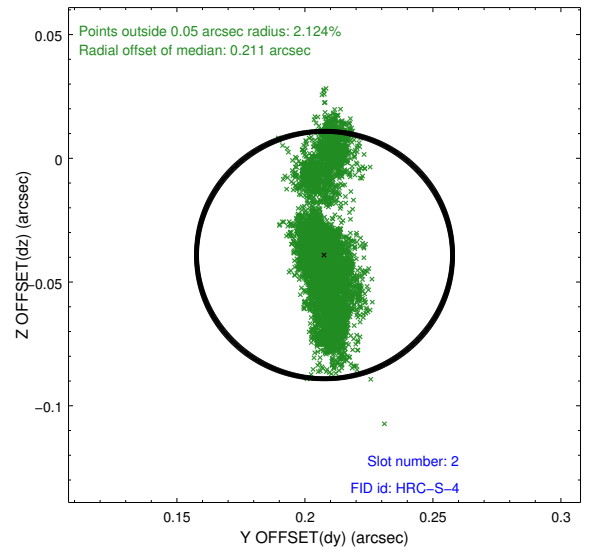
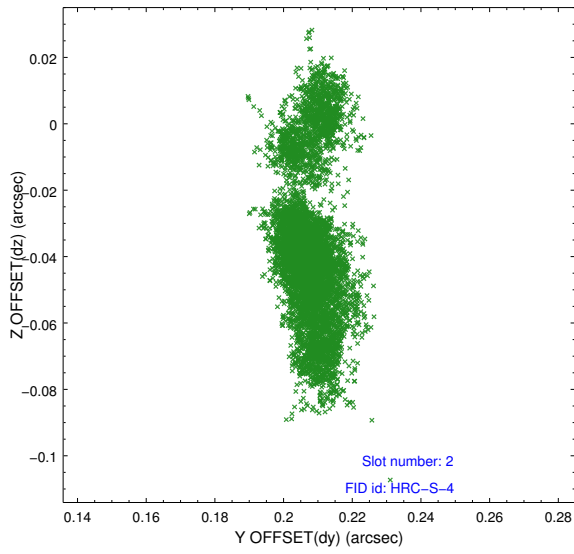
### 2.5.1 Slot 0



## 2.5.2 Slot 1

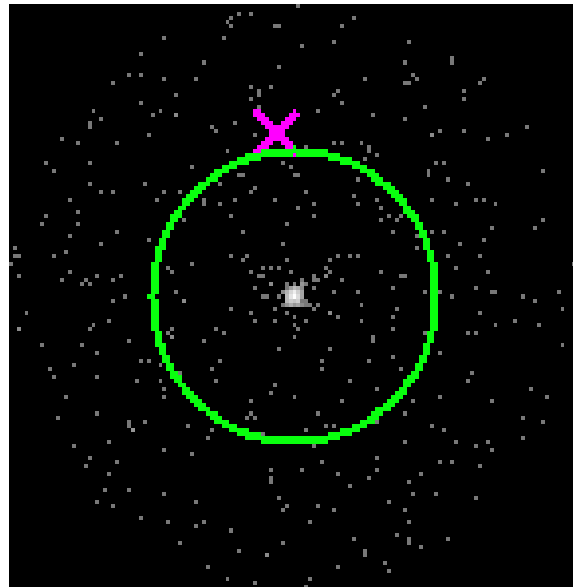


### 2.5.3 Slot 2

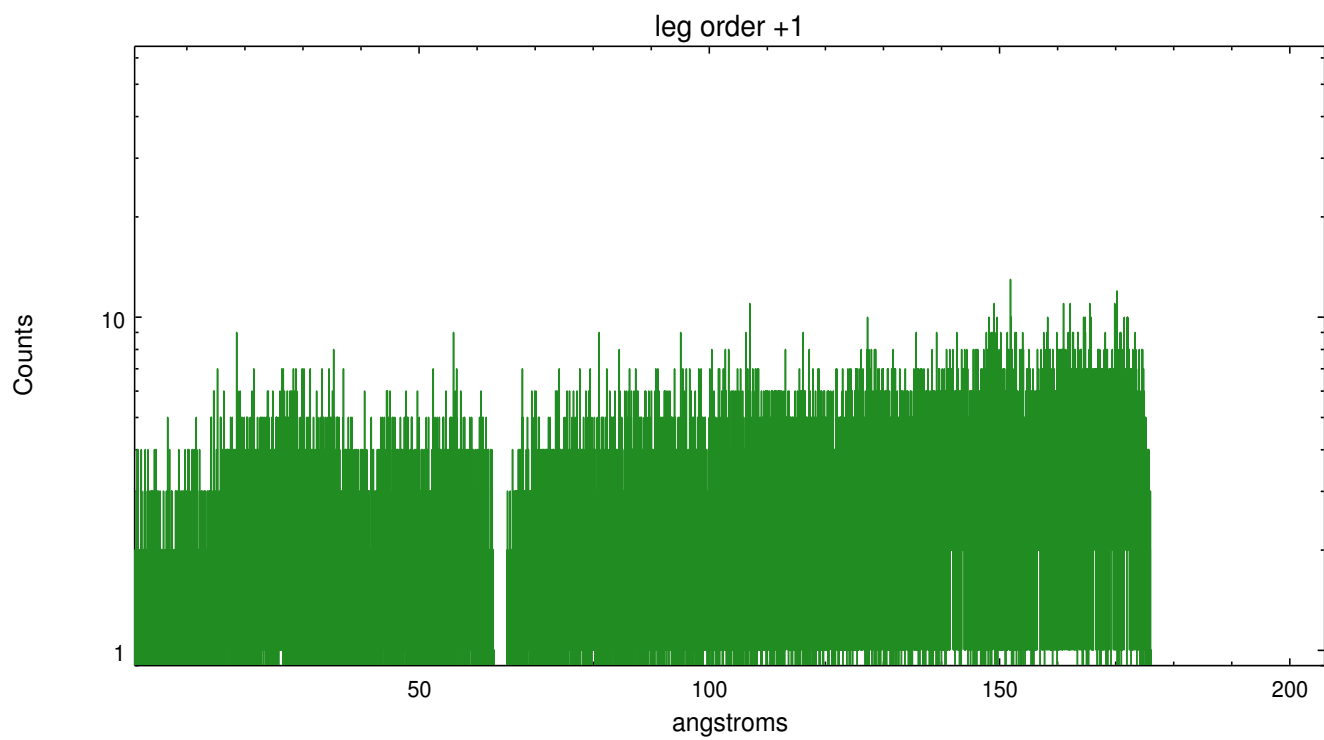
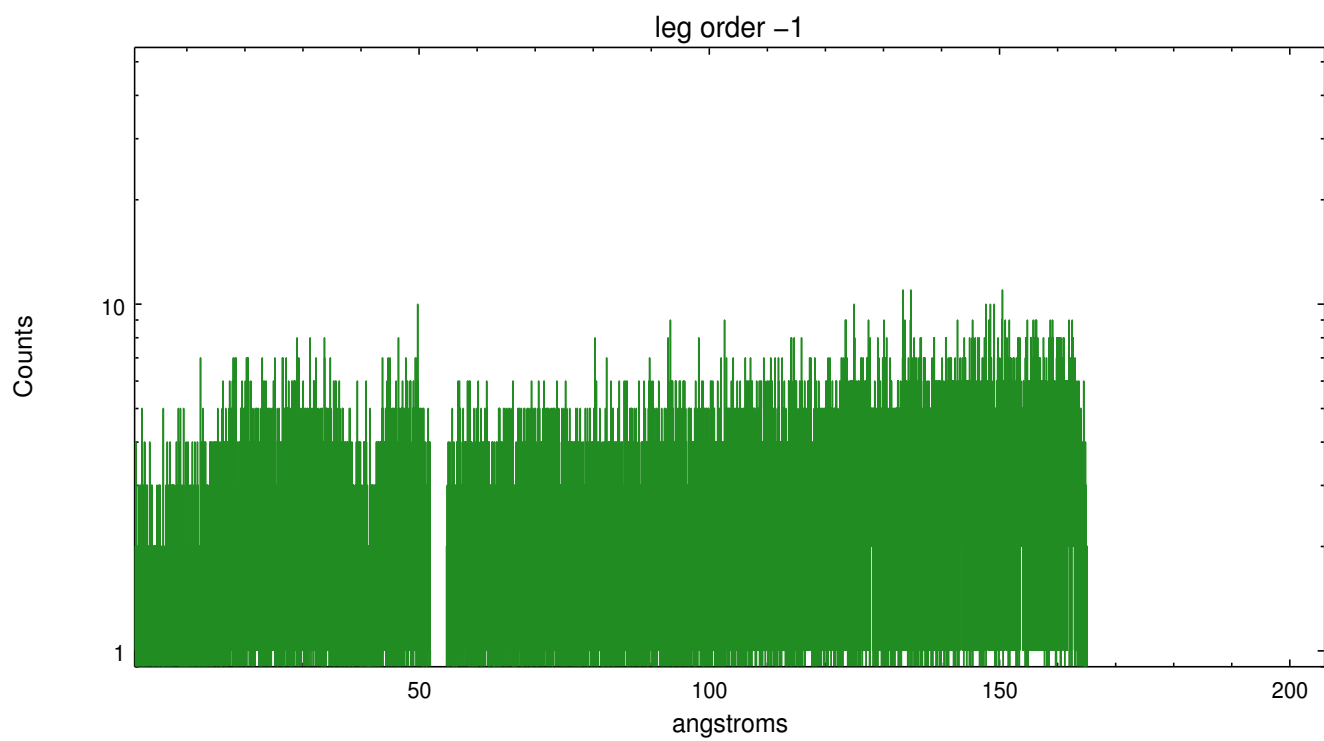


### 3 Gratings

#### 3.1 LETG Arm



LETG Zero Order



# A Summary

## A.1 Status

V&V Scientist	Joy Nichols
V&V Date (YYYY-MM-DD)	2013.01.24
V&V Edition	1
V&V Disposition and Status	OK
V&V Charge Time	26.25563

## A.2 Comments