

V&V Reference Report

L2 ASCDS Version : 8.4.3.1

Observation 6419 - L2 Version 2
Chandra X-Ray Center

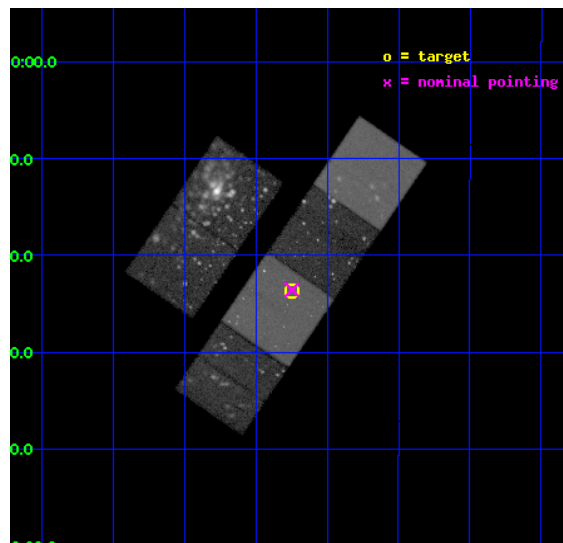
L2 Processing Date : Apr 6 2012

Contents

1	Front	2
2	OBI	3
2.1	OBI	3
2.1.1	Images	3
2.1.2	Bias	3
2.1.3	Parameters	4
2.1.4	Events	4
2.2	Compared Parameters	5
2.3	Aspect	6
2.4	Star Slots	9
2.4.1	Slot 3	9
2.4.2	Slot 4	10
2.4.3	Slot 5	11
2.4.4	Slot 6	12
2.4.5	Slot 7	13
2.5	FID Slots	14
2.5.1	Slot 0	14
2.5.2	Slot 1	15
2.5.3	Slot 2	16
A	Summary	17
A.1	Status	17
A.2	Comments	17

1 Front

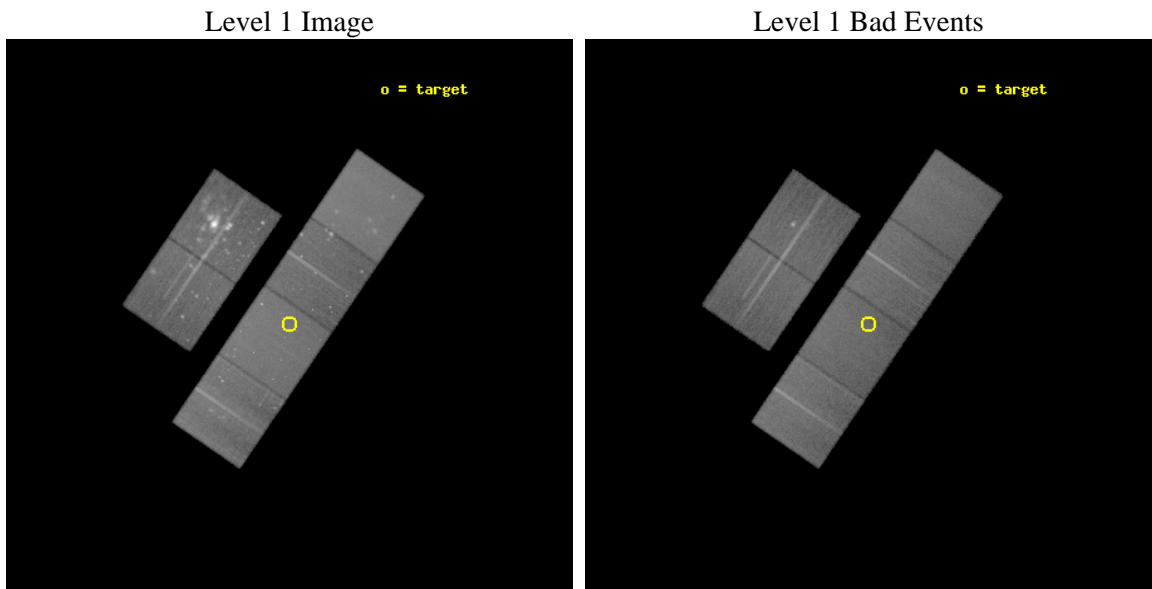
seq_num	200394	Sequence number
obs_id	6419	Observation id
title	Monitoring the X-ray emission of V1118 Ori during its outburst	Pro
observer	Prof. Marc Audard	Principal investigator
object	V1118 Ori	Source name
dtcycle	0	
cycle	P	events from which exps? Prim/Second/Both
ra_targ	83.68625	Observer's specified target RA [deg]
dec_targ	-5.561472	Observer's specified target Dec [deg]
ra_nom	83.686921945435	Nominal RA [deg]
dec_nom	-5.5594888669832	Nominal Dec [deg]
roll_nom	124.36807050432	Nominal Roll [deg]
revision	2	Processing version of data
ontime	29951.633408189	Sum of GTIs [s]
livetime	29572.367791266	Livetime [s]
ontime2	25761.108430743	Sum of GTIs [s]
ontime3	28826.896232843	Sum of GTIs [s]
ontime5	29951.592368186	Sum of GTIs [s]
ontime6	29705.238204777	Sum of GTIs [s]
ontime7	29951.633408189	Sum of GTIs [s]
ontime8	29915.818495452	Sum of GTIs [s]
l2events	665045	Number of level 2 events



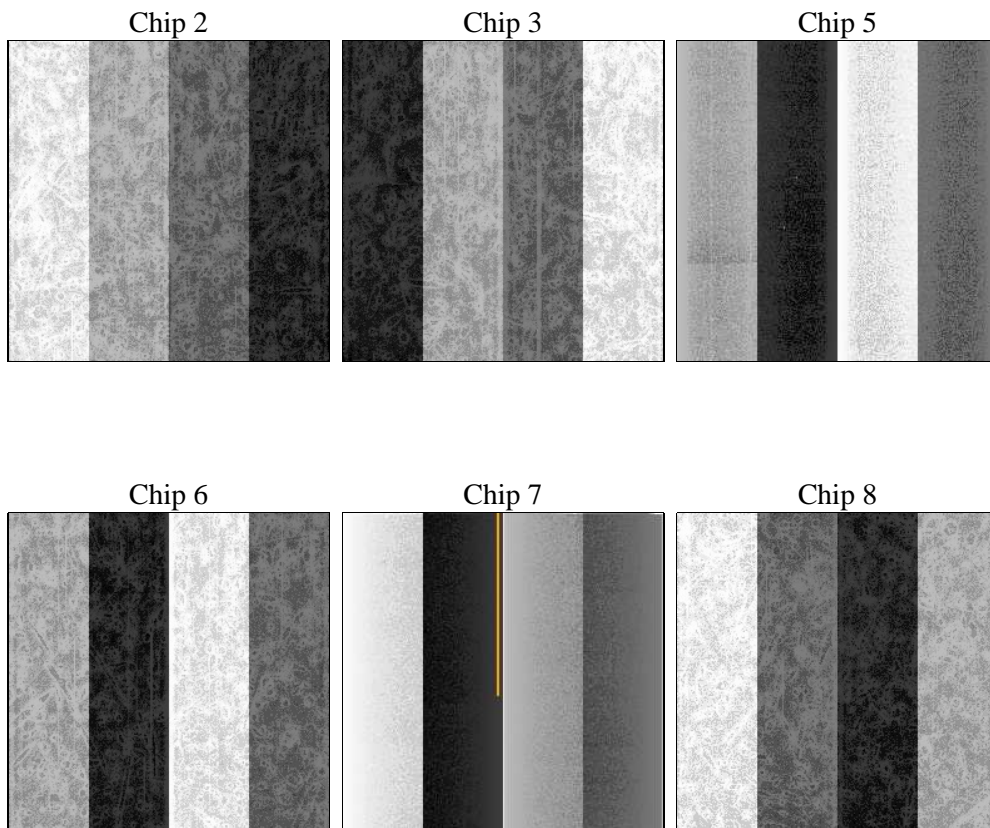
2 OBI

2.1 OBI

2.1.1 Images



2.1.2 Bias



2.1.3 Parameters

obi_num	0	Obi number	sched_exp_time	30000.000000	[s] Scheduled observation exposure time
ascdsver	8.4.3.1	Processing system revision	ontime	29951.633408189	Sum of GTIs [s]
caldbver	4.4.9	 	ontime2	25761.108430743	Sum of GTIs [s]
date	2012-04-06T02:11:38	Date and time of file creation	ontime3	28826.896232843	Sum of GTIs [s]
revision	2	Processing version of data	ontime5	29951.592368186	Sum of GTIs [s]
			ontime6	29705.238204777	Sum of GTIs [s]
			ontime7	29951.633408189	Sum of GTIs [s]
			ontime8	29915.818495452	Sum of GTIs [s]
			l1events	2118957	Number of level 1 events

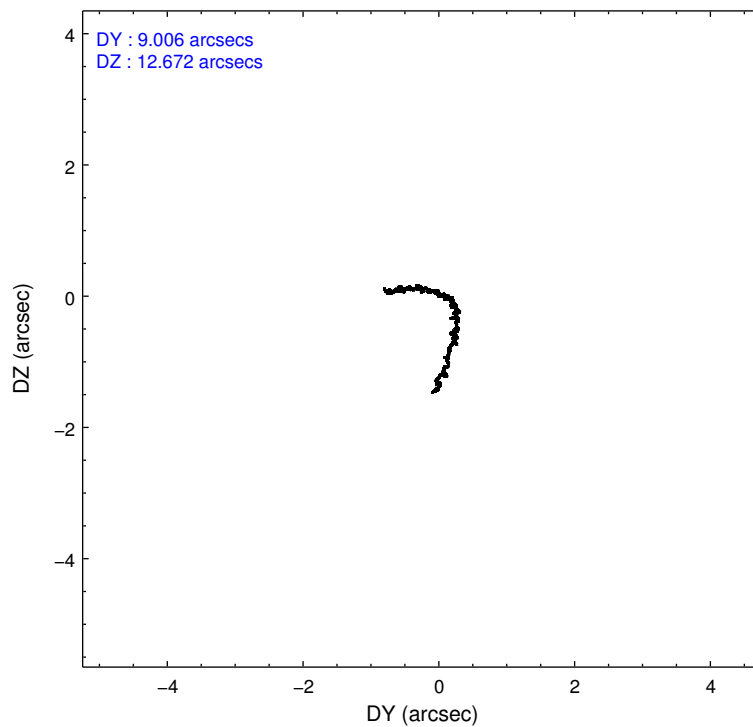
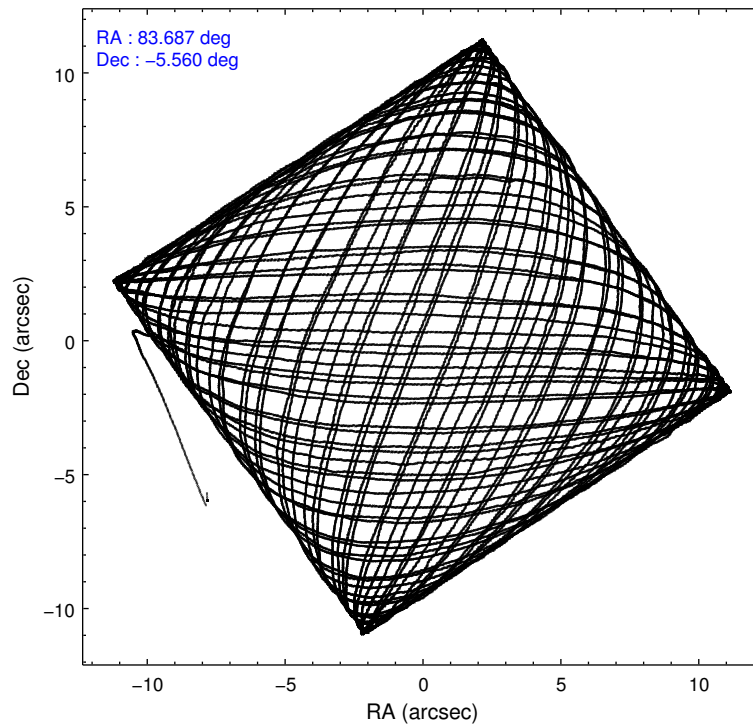
2.1.4 Events

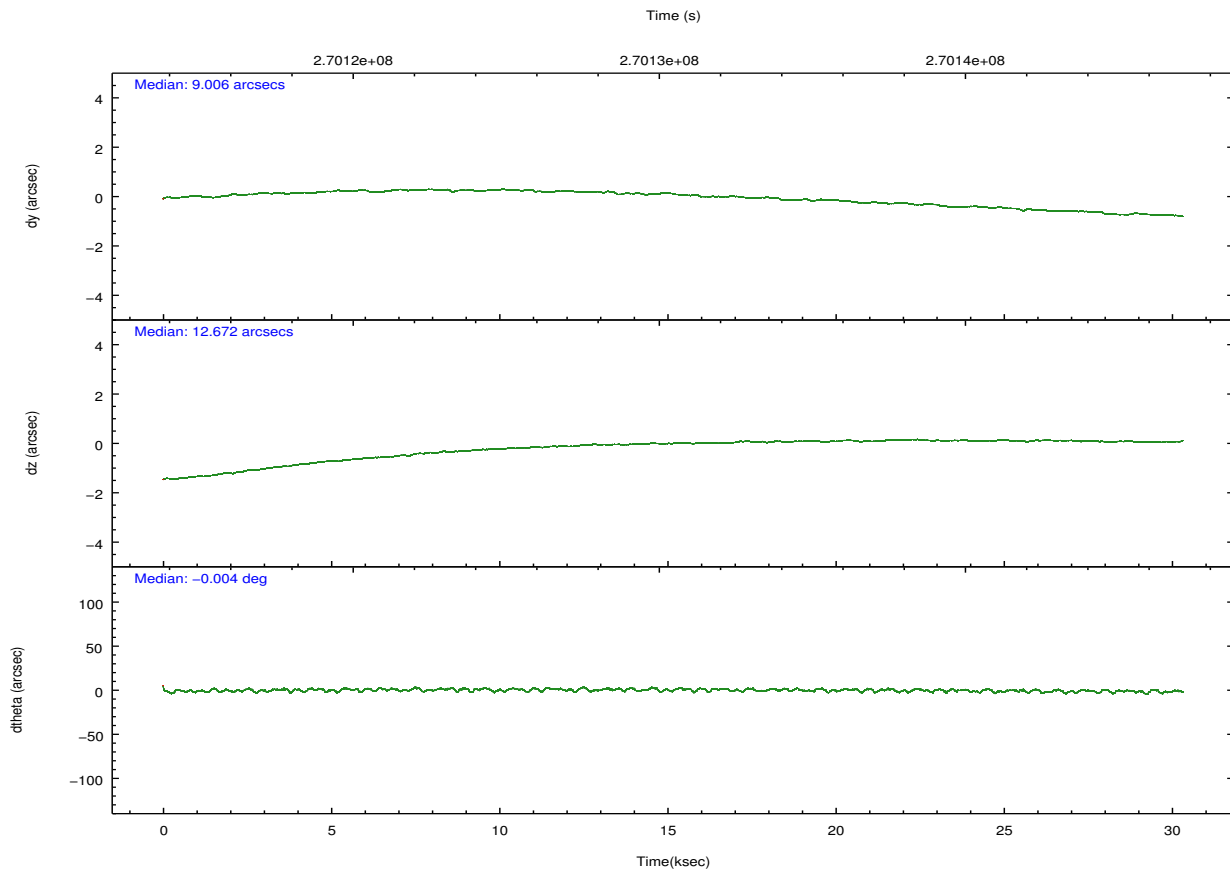
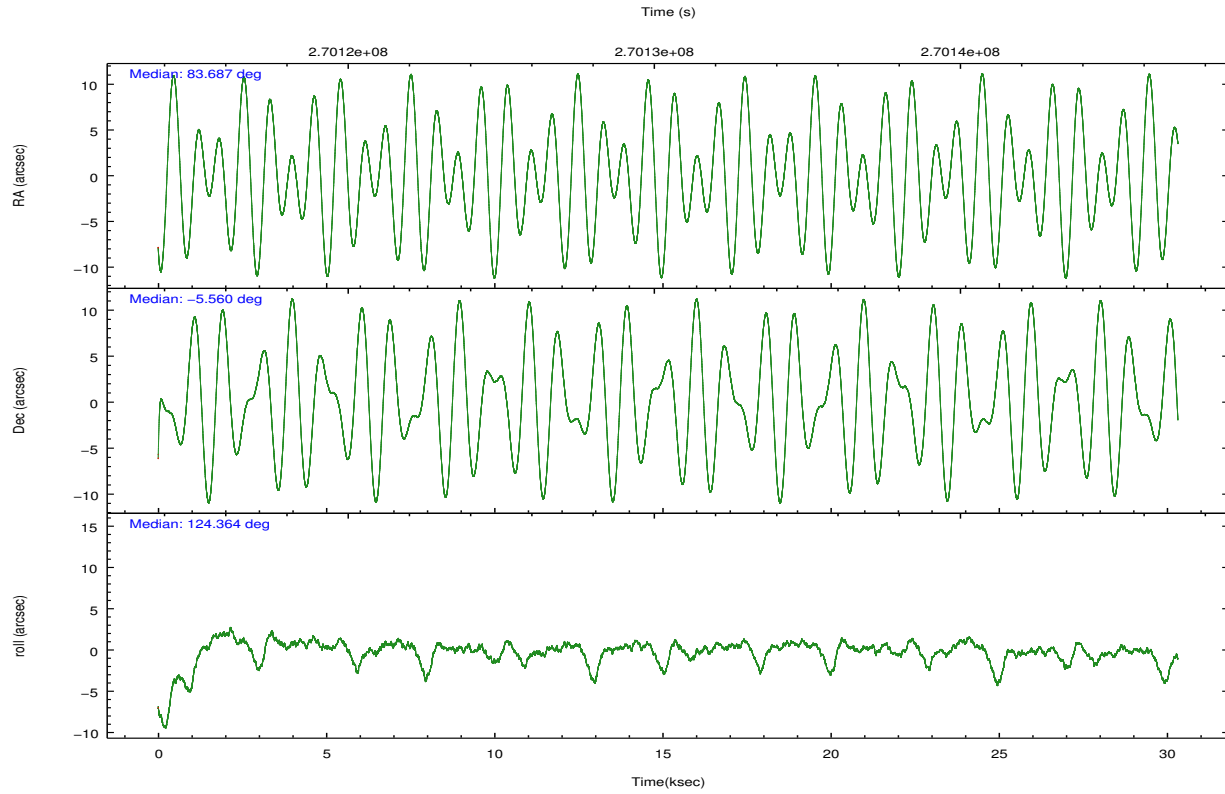
	ccd 2	ccd 3	ccd 5	ccd 6	ccd 7	ccd 8		ccd 2	ccd 3	ccd 5	ccd 6	ccd 7	ccd 8
level 1 events	425785	269990	406729	287493	376341	352619	grade 0 events	163414	27993	13374	27875	16455	30832
rejected events	214575	222426	221478	237355	214061	269151		38%	10%	3%	9%	4%	8%
rejected %	50%	82%	54%	82%	56%	76%	grade 1 events	1816	302	565	235	376	289
								0%	0%	0%	0%	0%	0%
							grade 2 events	23436	7298	57629	8463	33113	17589
								5%	2%	14%	2%	8%	4%
							grade 3 events	8125	3347	6943	3575	14235	8181
								1%	1%	1%	1%	3%	2%
							grade 4 events	8130	3336	6750	3479	14006	7642
								1%	1%	1%	1%	3%	2%
							grade 5 events	10030	11595	28878	12356	34230	16736
								2%	4%	7%	4%	9%	4%
							grade 6 events	8128	5602	100601	6757	84500	19236
								1%	2%	24%	2%	22%	5%
							grade 7 events	202706	210517	191989	224753	179426	252114
								47%	77%	47%	78%	47%	71%

2.2 Compared Parameters

Parameter	Planned	Actual	Parameter	Planned	Actual
Instrument	ACIS	ACIS	Obspar format version number	7	7
Detector	ACIS-235678	ACIS-235678	Obspar file type	PREDICTED	ACTUAL
Grating	NONE	NONE	Obspar update status	NONE	UPDATED
Data mode	VFAINT	VFAINT	Number of optional ACIS chips dropped	0	0
Observation mode	POINTING	POINTING	On-chip summing requested	N	N
[deg] Pointing RA	83.711755	83.68692194543543	Subarray requested	NONE	NONE
[deg] Pointing Dec	-5.570946	-5.55948886698315	Alternating exposures requested	N	N
[deg] Pointing Roll	124.213852	124.3680705043219	[s] Primary exposure time	0.000000	3.2
[mm] SIM focus pos	-0.684267	-0.6828225247311905			
[mm] SIM defocus	0	0.001444936568705701			
[mm] SIM translation stage pos	-190.132523	-190.1400660498719			
[mm] SIM translation stage offset	0	0.00754346686406393			
[s] Observation start time (MET)	270115608.184000	270114575.42595			
Observation start date	2006-07-24T08:05:43	2006-07-24T07:49:35			
[s] Observation end time (MET)	270145608.184000	270146931.08996			
Observation end date	2006-07-24T16:25:43	2006-07-24T16:48:51			
Read mode	TIMED	TIMED			

2.3 Aspect



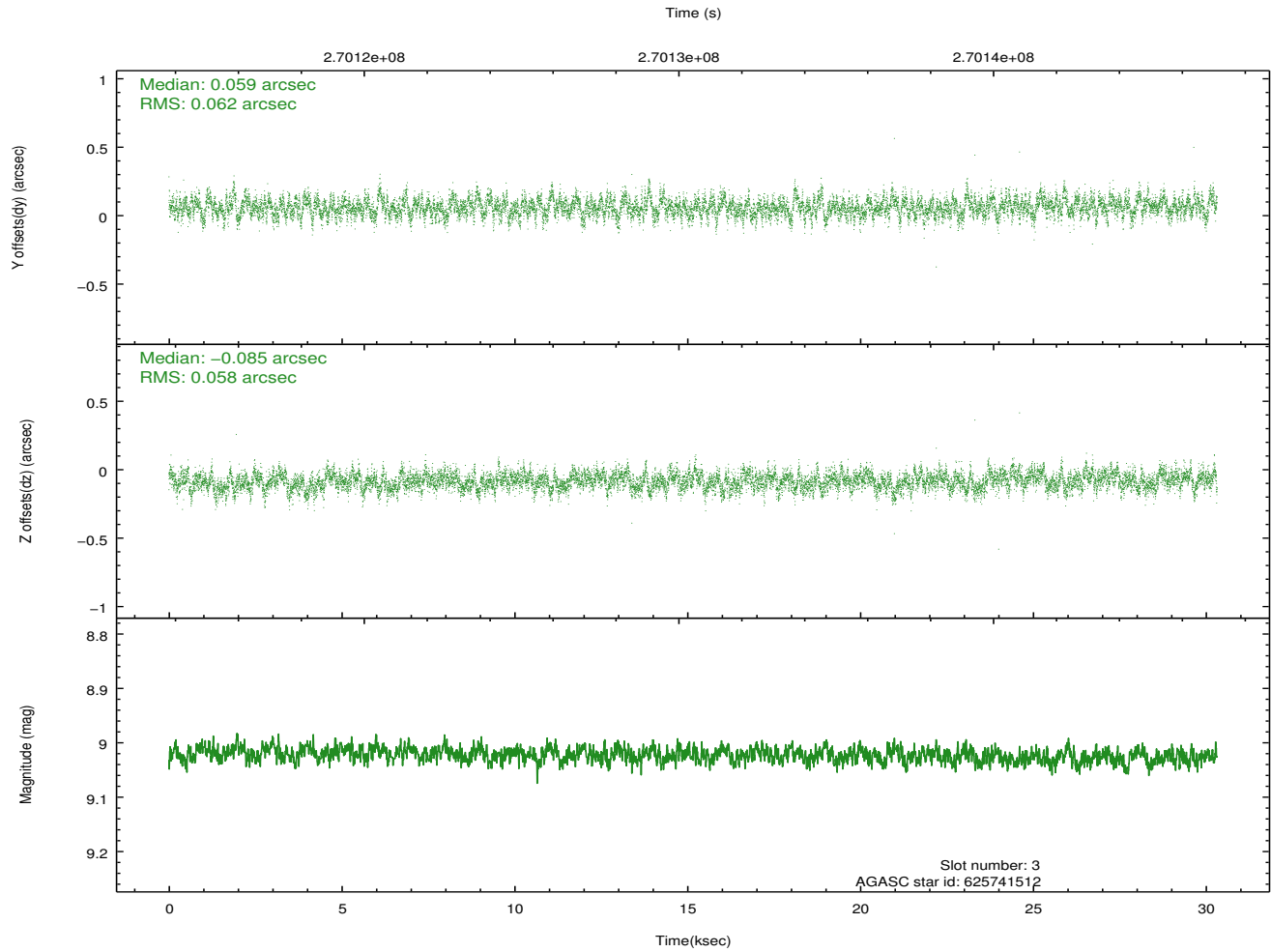
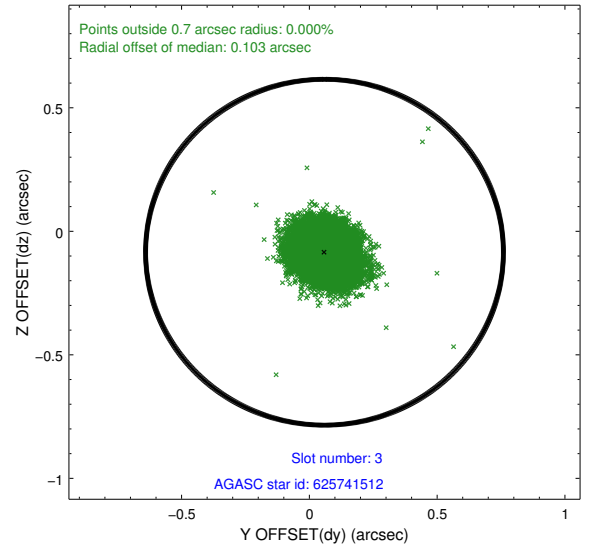
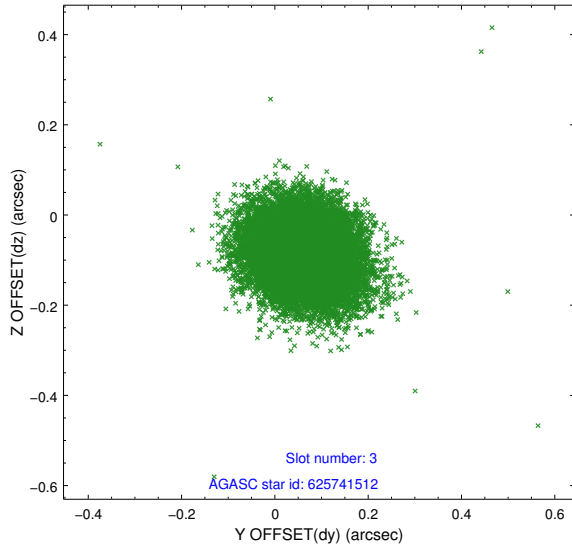


Slot Statistics

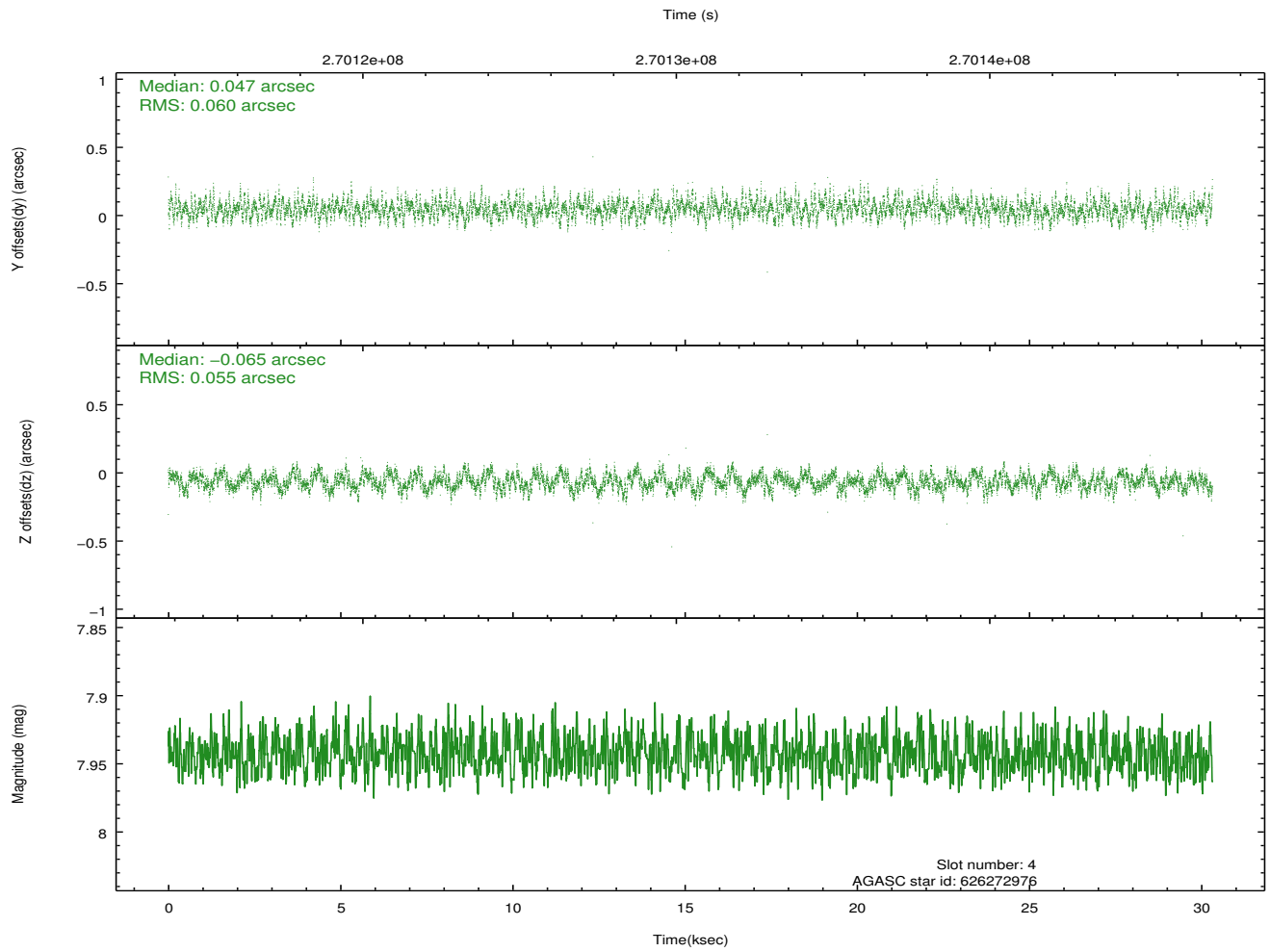
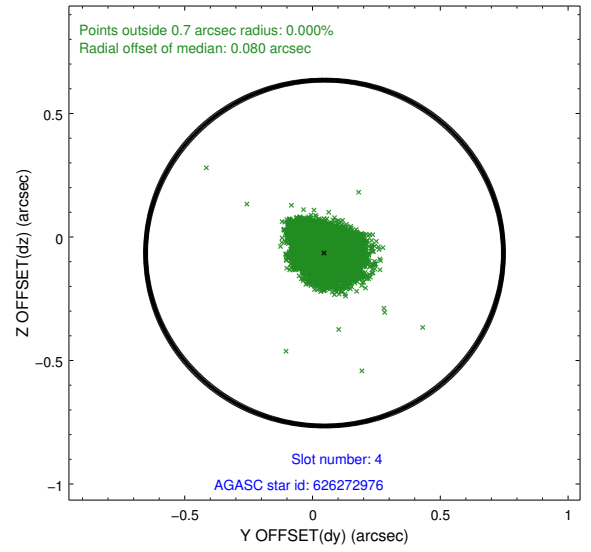
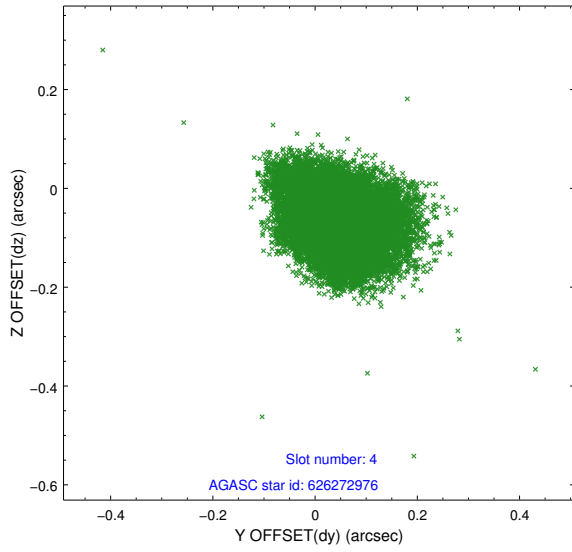
slot	status	id	mag	n_pts	med_dy	med_dz	dr1	dr2	ra	dec	mean_y	mean_z
0	FID	ACIS-S-2	7.11	7395	-0.076	-0.044	0.018	0.031	0.000000	0.000000	-761.80	-1733.80
1	FID	ACIS-S-4	7.18	7395	0.077	0.044	0.031	0.052	0.000000	0.000000	2151.60	174.70
2	FID	ACIS-S-6	7.34	7396	-0.029	0.006	0.022	0.036	0.000000	0.000000	400.33	812.14
3	GUIDE	625741512	9.02	14783	0.059	-0.085	0.090	0.147	83.281151	-5.340585	1553.52	810.57
4	GUIDE	626272976	7.94	14791	0.047	-0.065	0.086	0.138	83.795875	-5.926912	-1228.65	471.54
5	GUIDE	625745128	7.85	14785	-0.071	0.011	0.090	0.151	83.769930	-4.731835	2381.04	-1870.84
6	GUIDE	625745144	7.86	14781	-0.108	0.207	0.083	0.144	83.888985	-4.837539	1826.39	-2009.94
7	GUIDE	626272880	7.66	14789	0.062	-0.068	0.070	0.115	83.815609	-6.032748	-1583.41	627.20

2.4 Star Slots

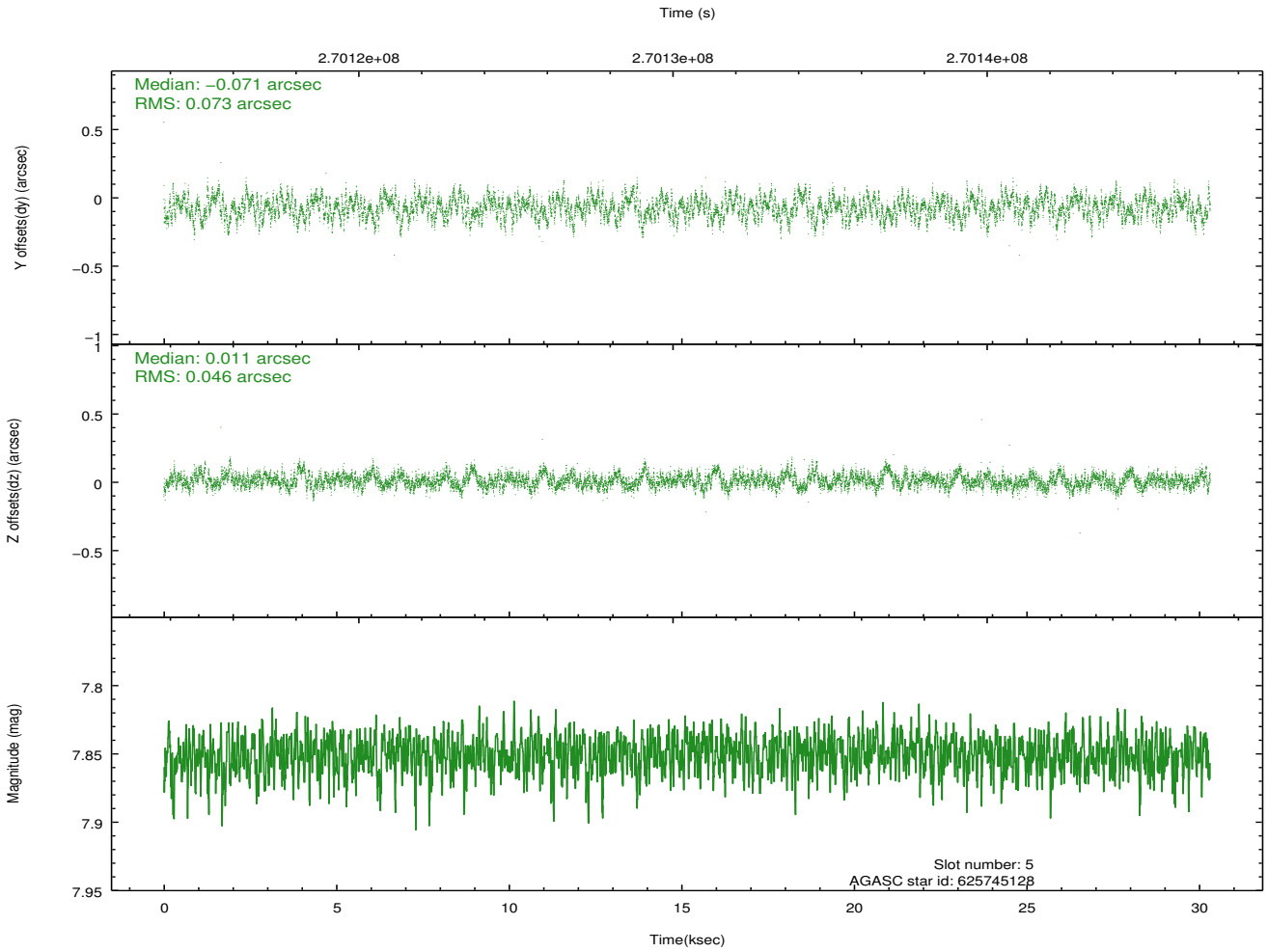
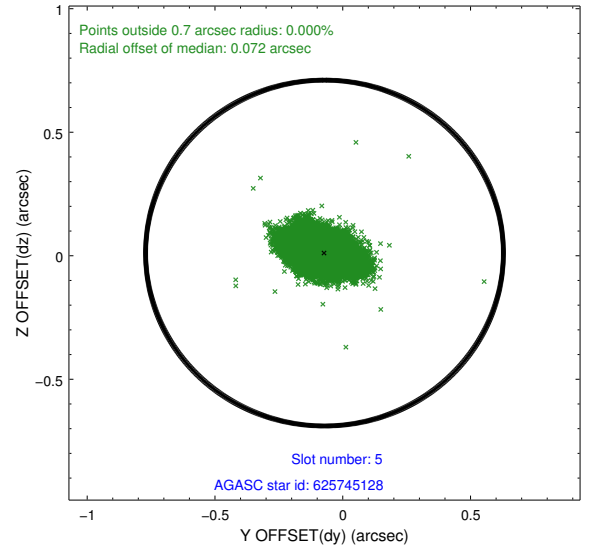
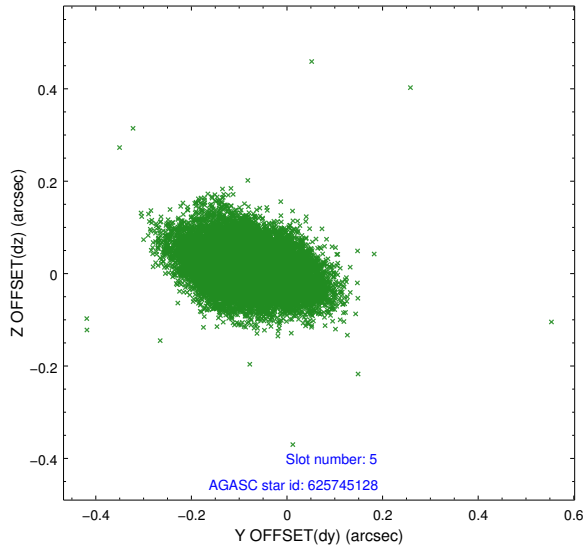
2.4.1 Slot 3



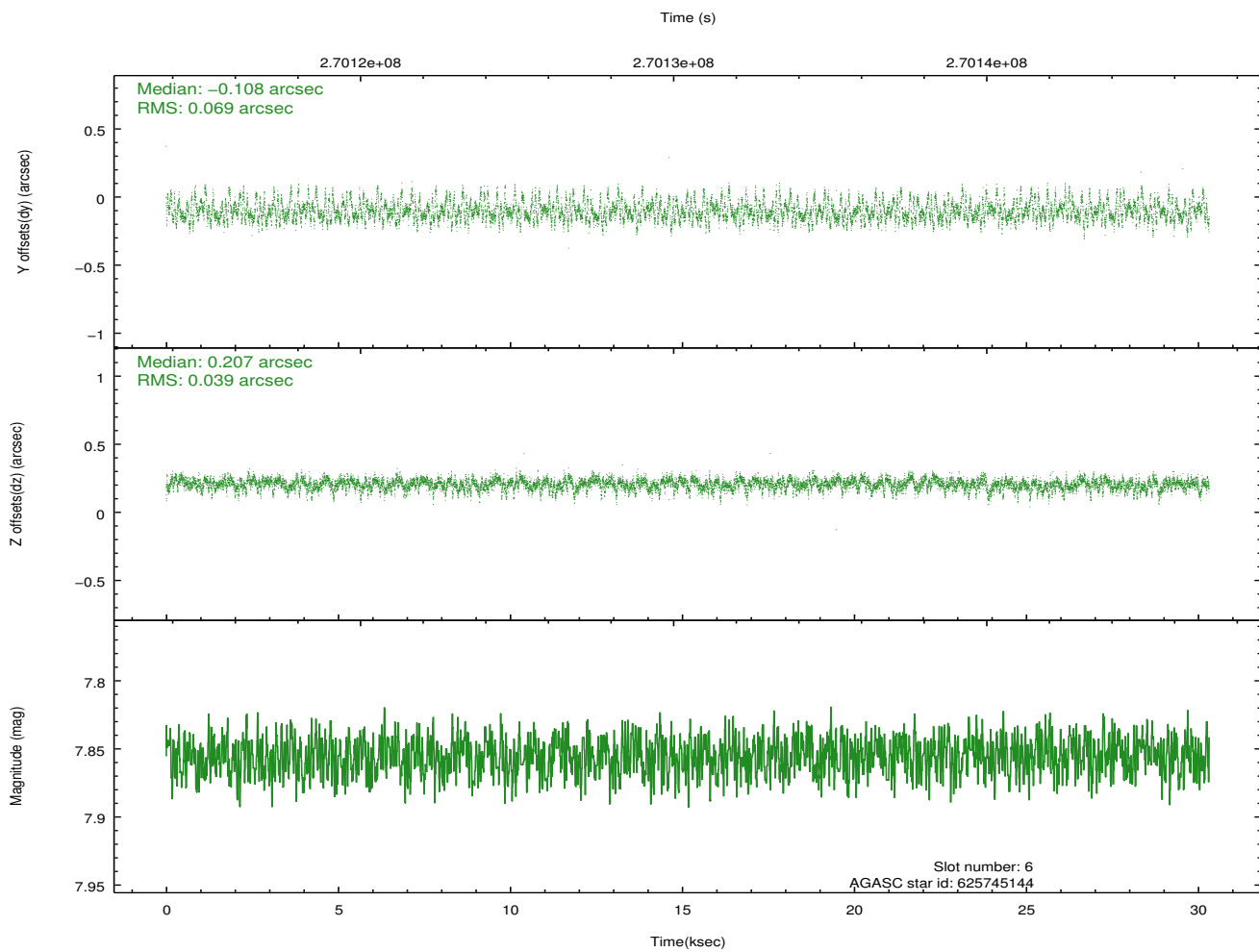
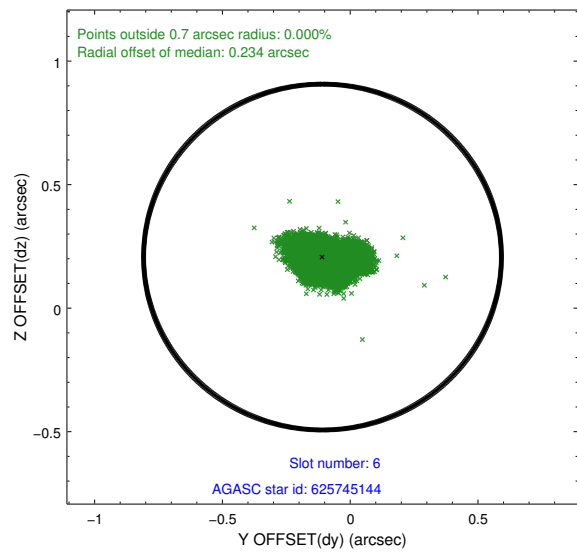
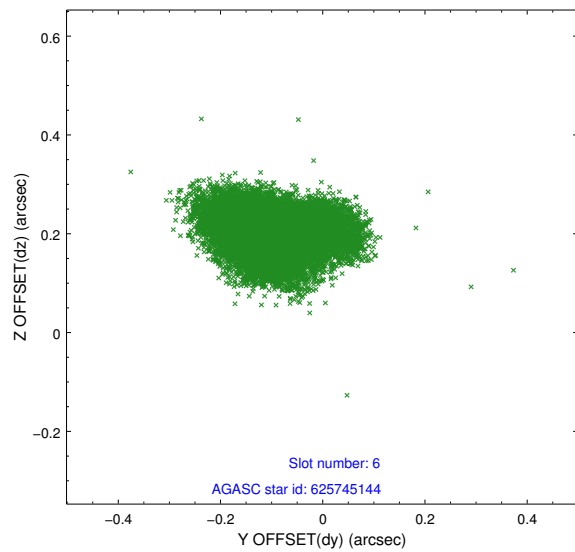
2.4.2 Slot 4



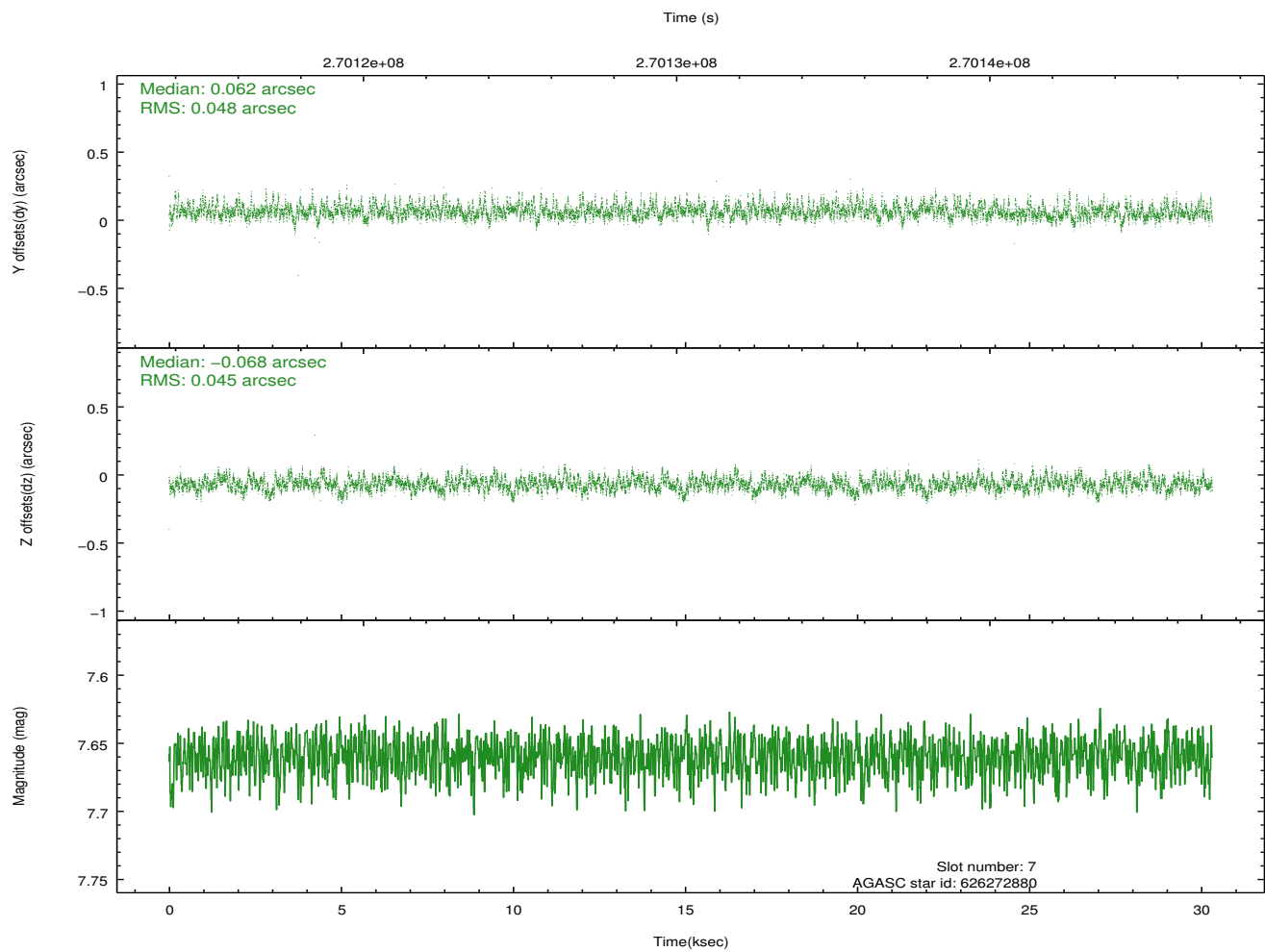
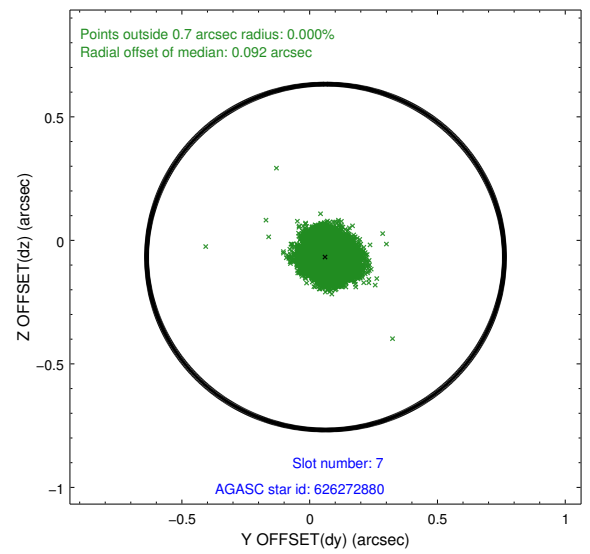
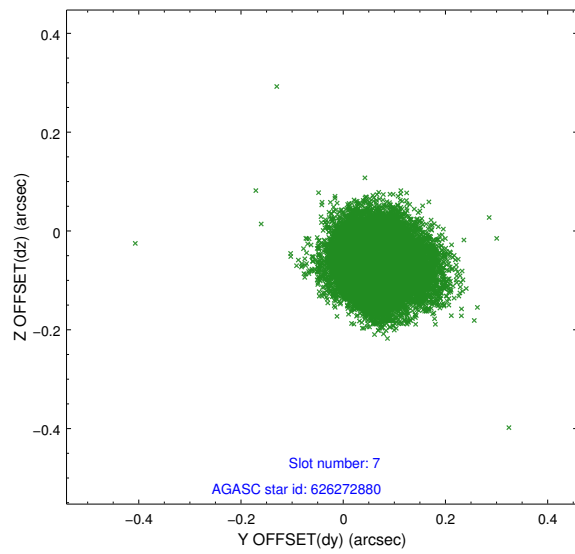
2.4.3 Slot 5



2.4.4 Slot 6

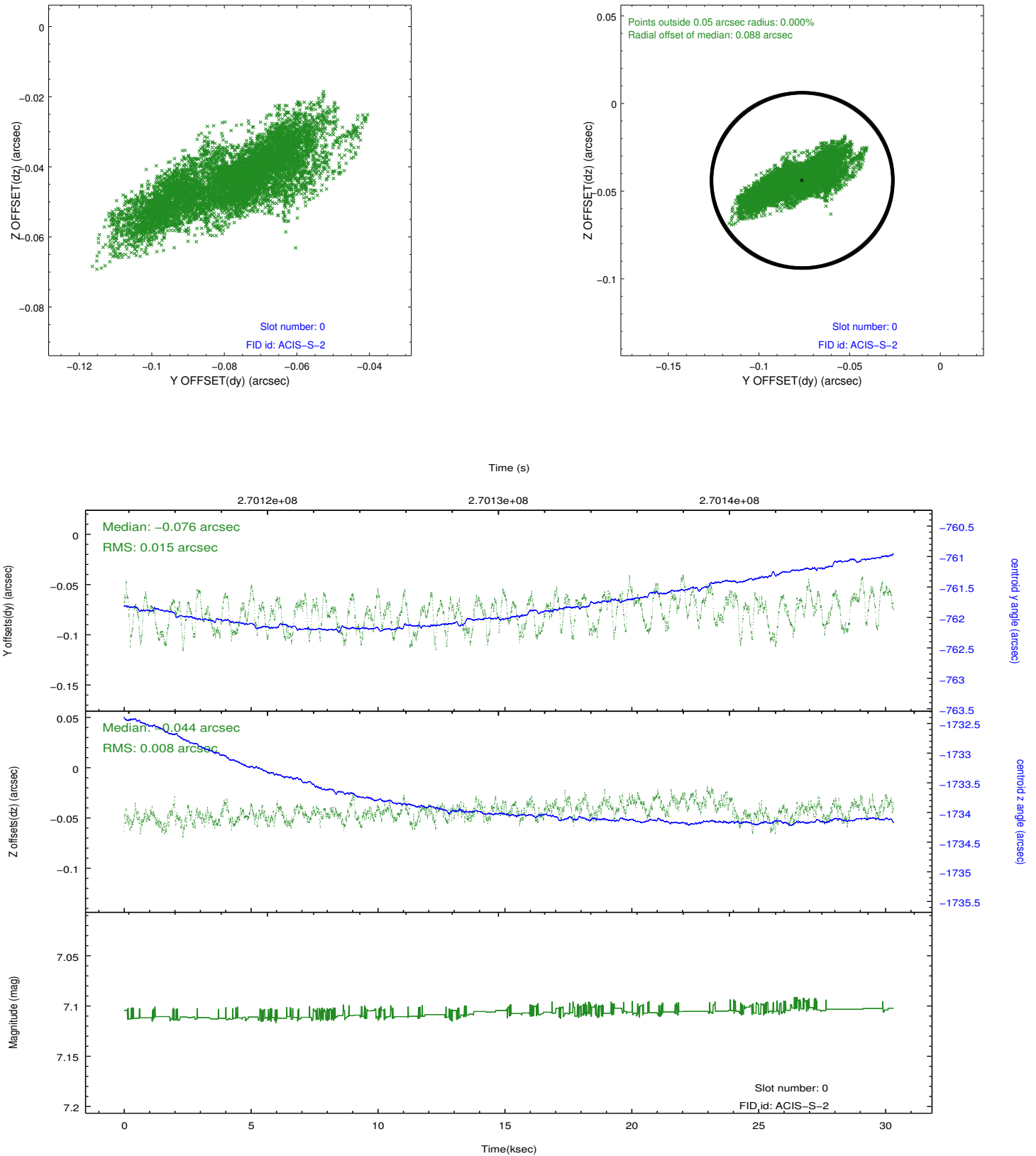


2.4.5 Slot 7

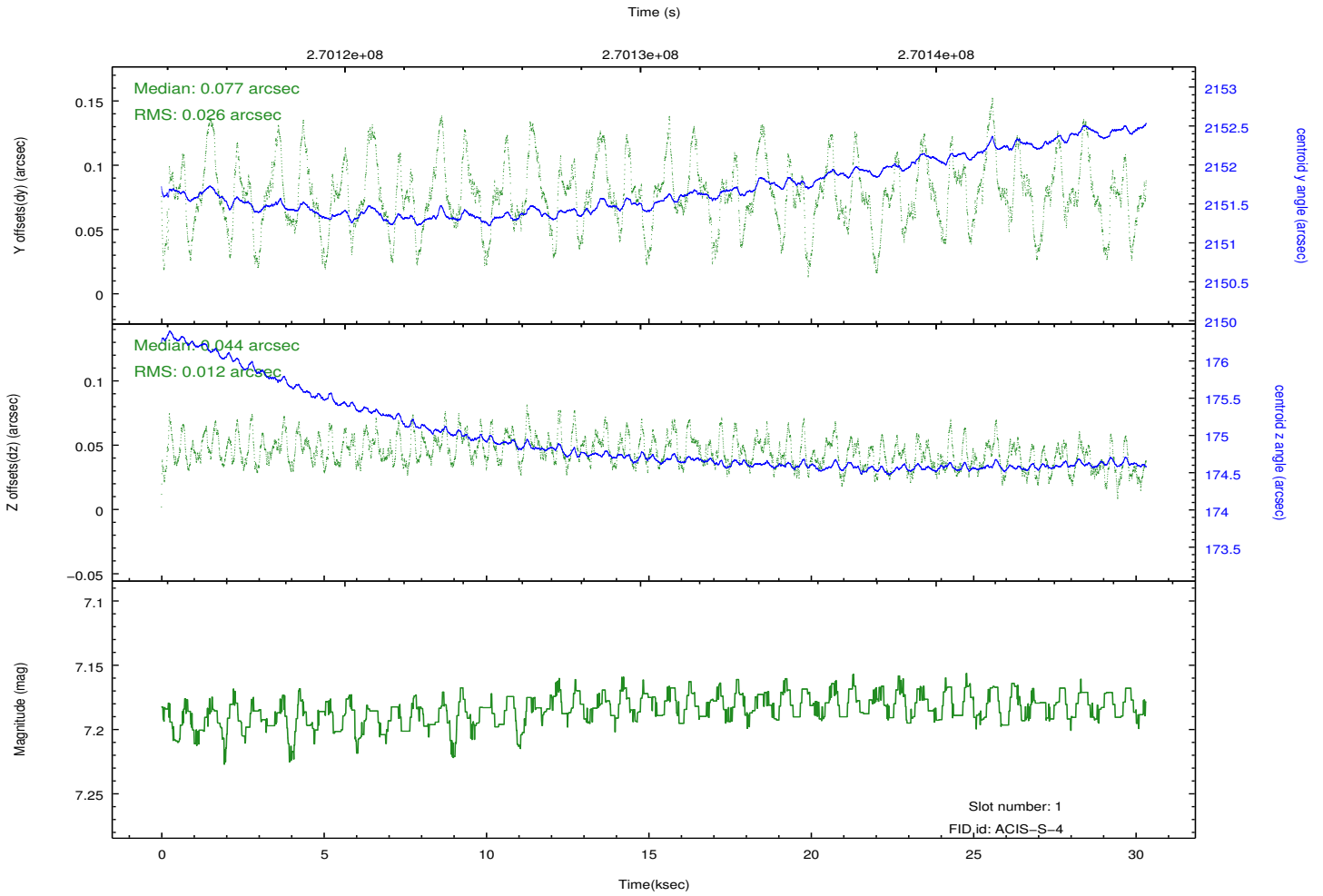
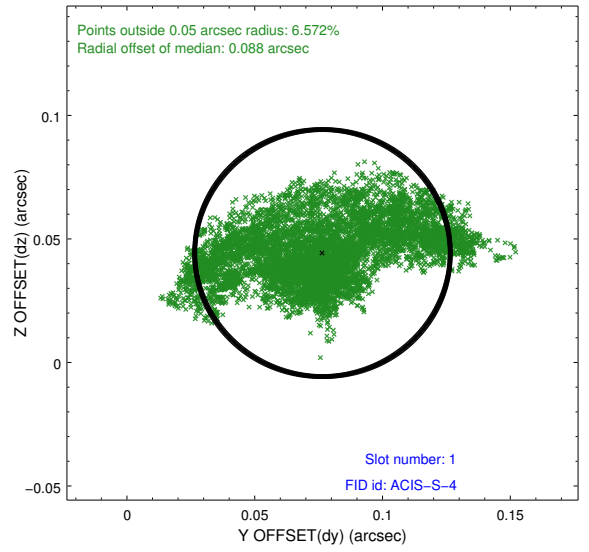
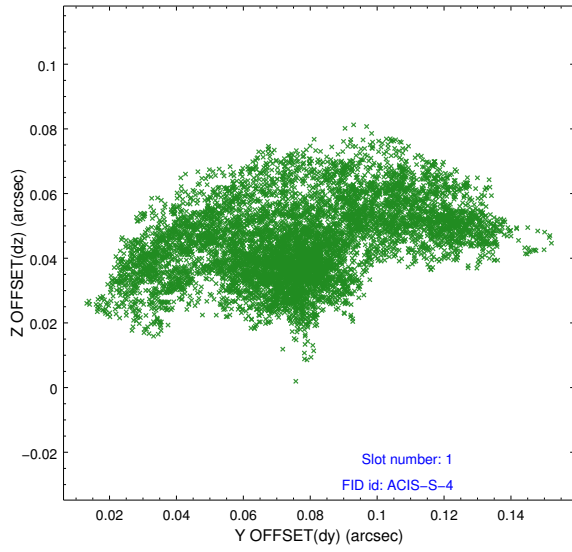


2.5 FID Slots

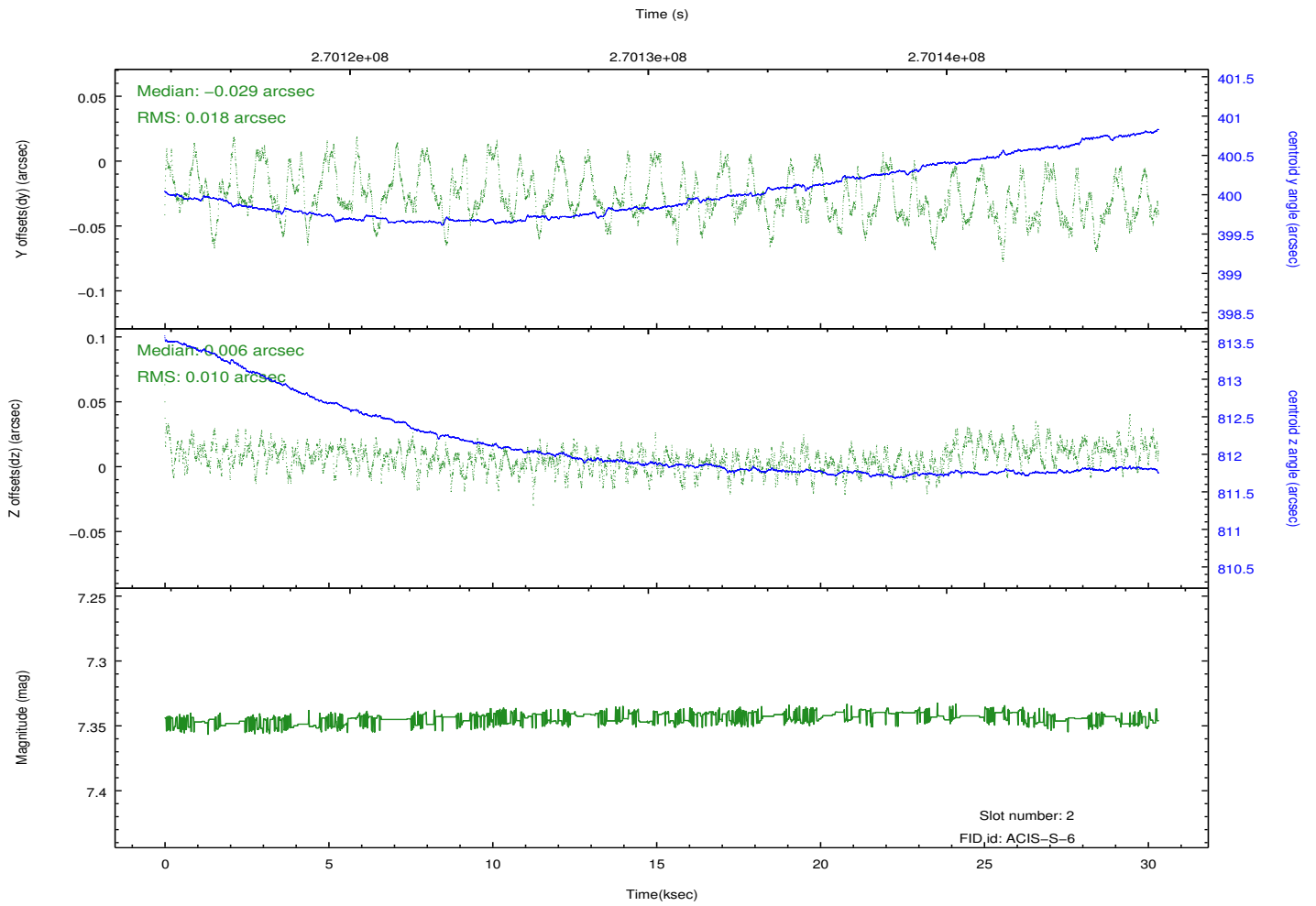
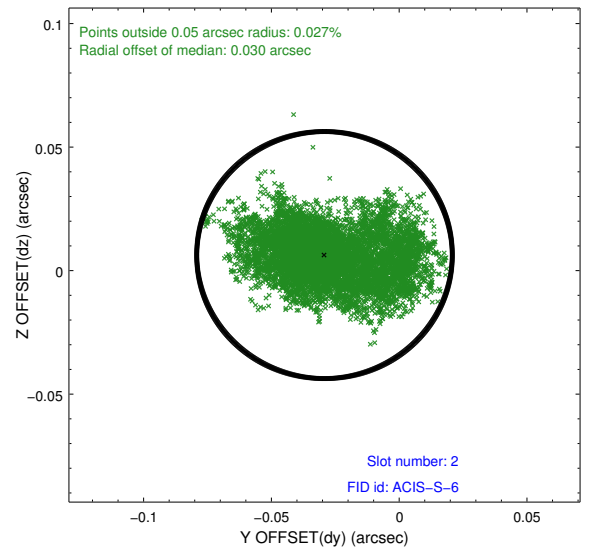
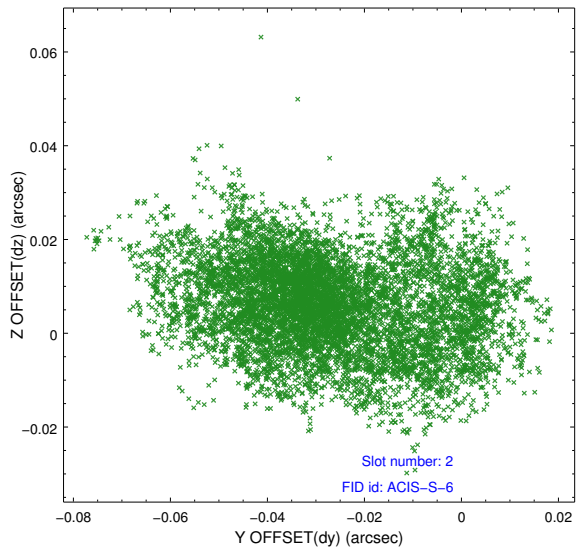
2.5.1 Slot 0



2.5.2 Slot 1



2.5.3 Slot 2



A Summary

A.1 Status

V&V Scientist	Beth Sundheim
V&V Date (YYYY-MM-DD)	2012.04.06
V&V Edition	1
V&V Disposition and Status	OK
V&V Charge Time	29.9519998

A.2 Comments