

V&V Reference Report

L2 ASCDS Version : 8.4.3.1

Observation 6549 - L2 Version 4
Chandra X-Ray Center

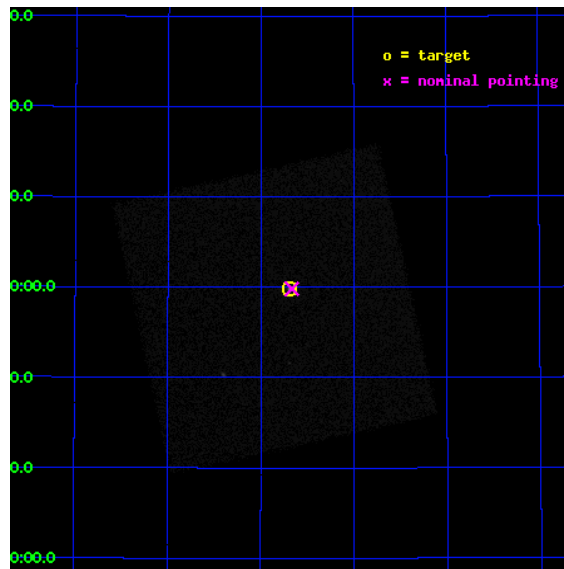
L2 Processing Date : Aug 10 2012

Contents

1	Front	2
2	OBI	3
2.1	OBI	3
2.1.1	Images	3
2.1.2	Parameters	4
2.1.3	Events	4
2.2	Compared Parameters	5
2.3	Aspect	6
2.4	Star Slots	9
2.4.1	Slot 3	9
2.4.2	Slot 4	10
2.4.3	Slot 5	11
2.4.4	Slot 6	12
2.4.5	Slot 7	13
2.5	FID Slots	14
2.5.1	Slot 0	14
2.5.2	Slot 1	15
2.5.3	Slot 2	16
A	Summary	17
A.1	Status	17
A.2	Comments	17

1 Front

seq_num	290642	Sequence number
obs_id	6549	Observation id
title	Improving the De-Gap Corrections for the HRC-I	Proposal title
observer	Dr. CXC Calibration	Principal investigator
object	Capella	Source name
ra_targ	79.1725	Observer's specified target RA [deg]
dec_targ	45.998	Observer's specified target Dec [deg]
ra_nom	79.166297364235	Nominal RA [deg]
dec_nom	45.997313876719	Nominal Dec [deg]
roll_nom	212.36600854747	Nominal Roll [deg]
revision	4	Processing version of data
ontime	5187.7814901769	[s]
livetime	5140.5851364977	Ontime multiplied by DTCOR
l2events	325263	Number of level 2 events

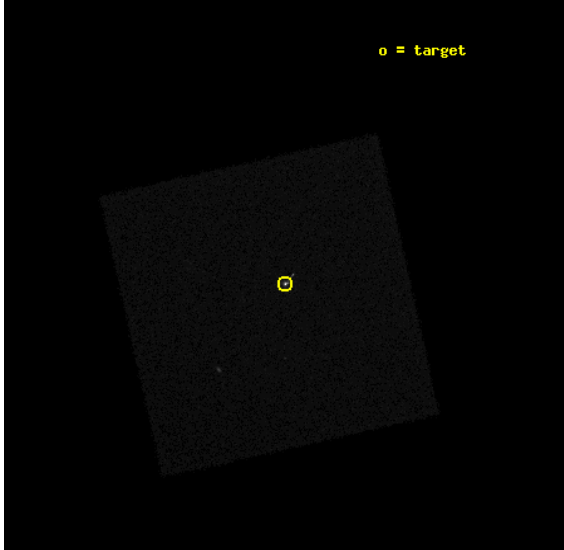


2 OBI

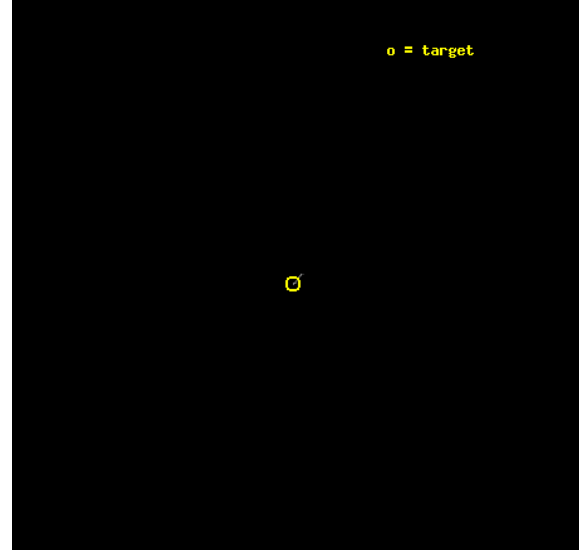
2.1 OBI

2.1.1 Images

Level 1 Image



Level 1 Bad Events



2.1.2 Parameters

obi_num	1	Obi number	sched_exp_time	5000.000000	[s] Scheduled observation exposure time
ascdsver	8.4.5	Processing system revision	ontime	5187.7814901769	[s]
caldbver	4.5.1.1	 	l1events	525336	Number of level 1 events
date	2012-08-10T20:41:57	Date and time of file creation			
revision	4	Processing version of data			

2.1.3 Events

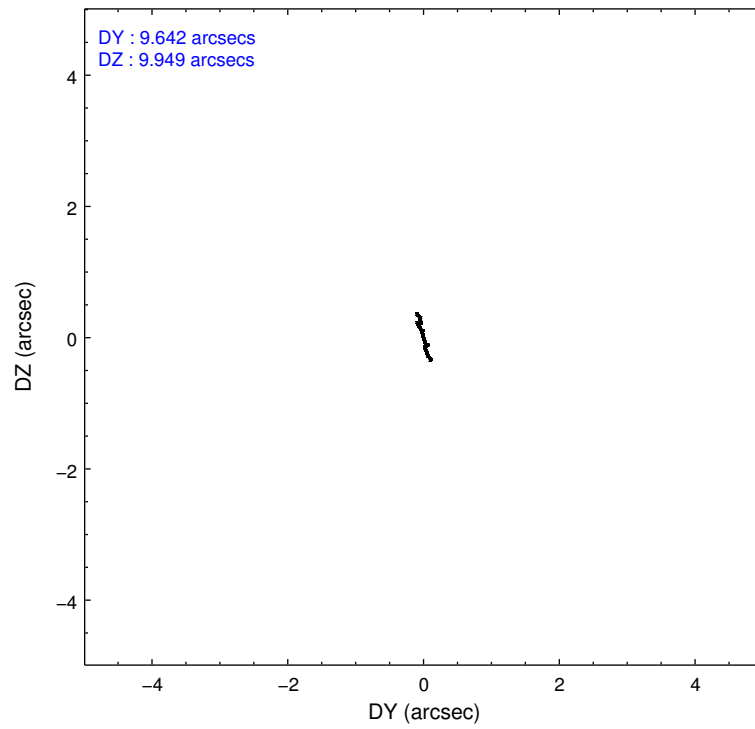
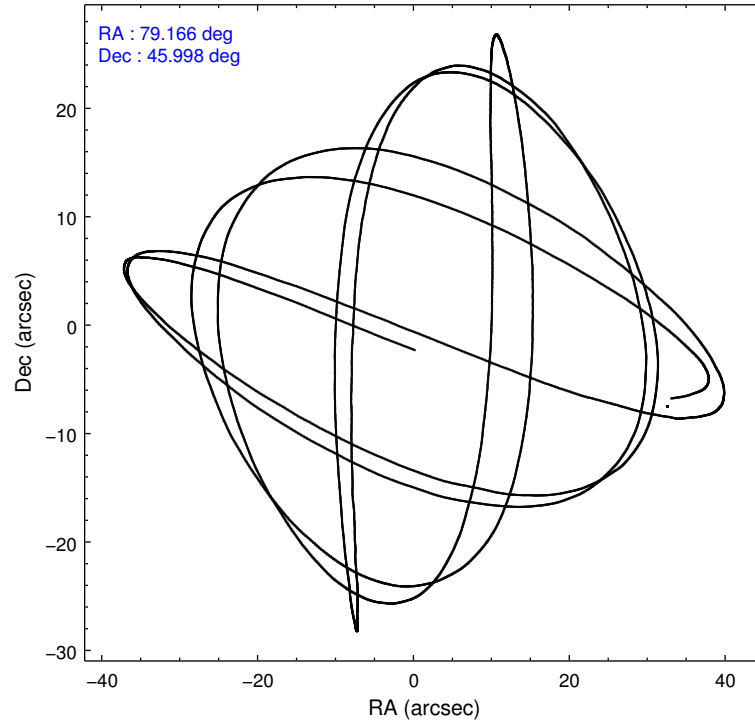
Level 1 Events

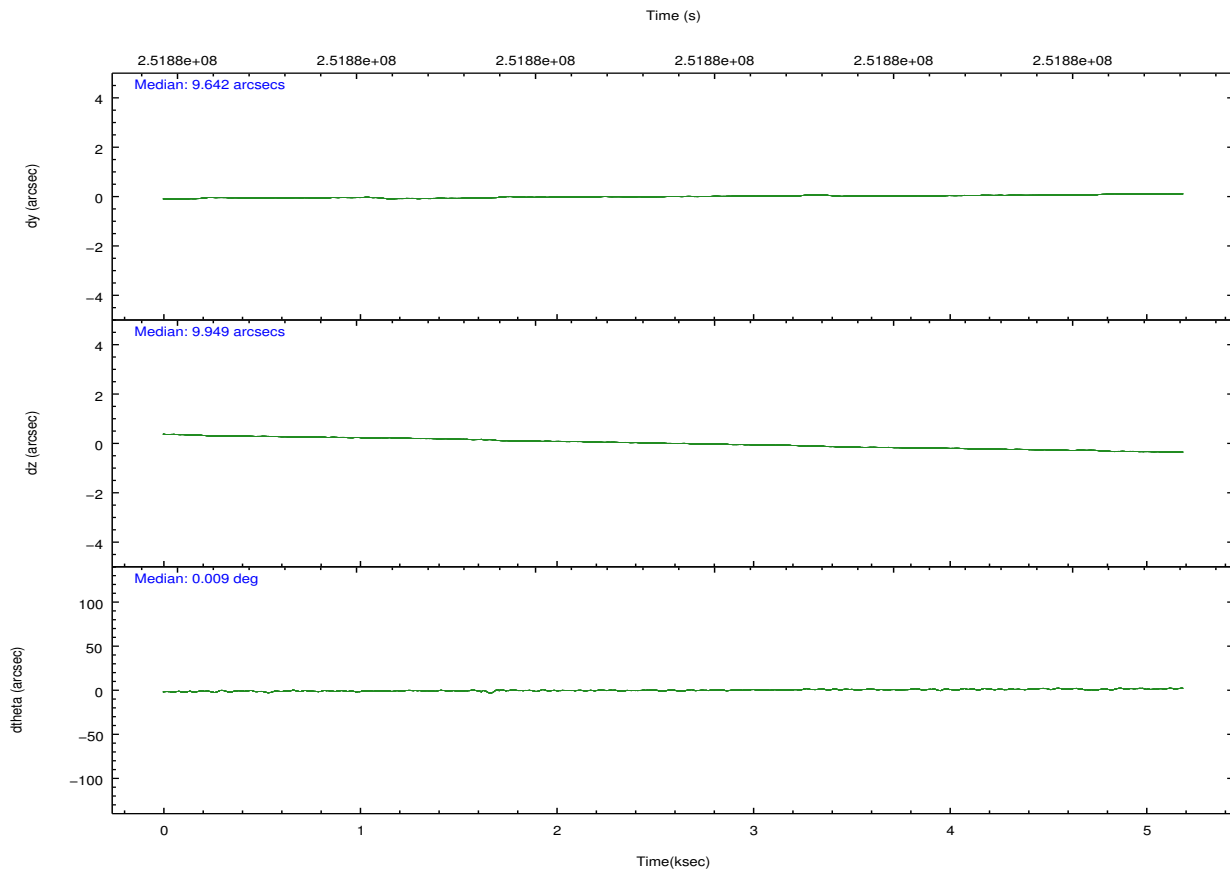
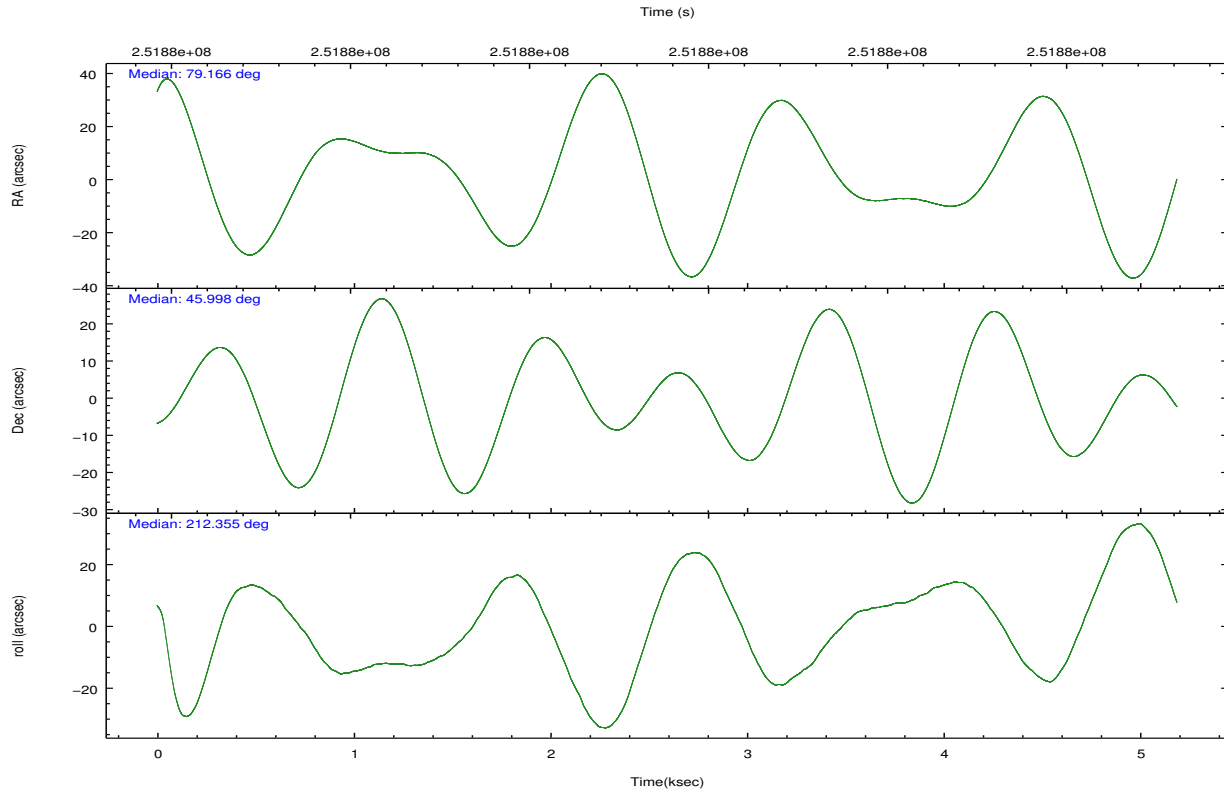
	segment 0
level 1 events	525336
rejected events	92551
rejected %	17%

2.2 Compared Parameters

Parameter	Planned	Actual	Parameter	Planned	Actual
Instrument	HRC	HRC	Obspar format version number	7	7
Detector	HRC-I	HRC-I	Obspar file type	PREDICTED	ACTUAL
Grating	NONE	NONE	Obspar update status	NONE	UPDATED
Data mode	OBSERVING	OBSERVING			
Observation mode	POINTING	POINTING			
[deg] Pointing RA	79.183879	79.16629736423546			
[deg] Pointing Dec	46.021600	45.9973138767192			
[deg] Pointing Roll	212.448730	212.36600854747			
[mm] SIM focus pos	-1.040293	-1.038866356238299			
[mm] SIM defocus	0	0.001426264420575141			
[mm] SIM translation stage pos	117.985494	117.9943027869092			
[mm] SIM translation stage offset	9	8.991186104692318			
[s] Observation start time (MET)	251876360.184000	251874899.96382			
Observation start date	2005-12-25T05:38:16	2005-12-25T05:14:59			
[s] Observation end time (MET)	251881360.184000	251881493.78912			
Observation end date	2005-12-25T07:01:36	2005-12-25T07:04:53			

2.3 Aspect



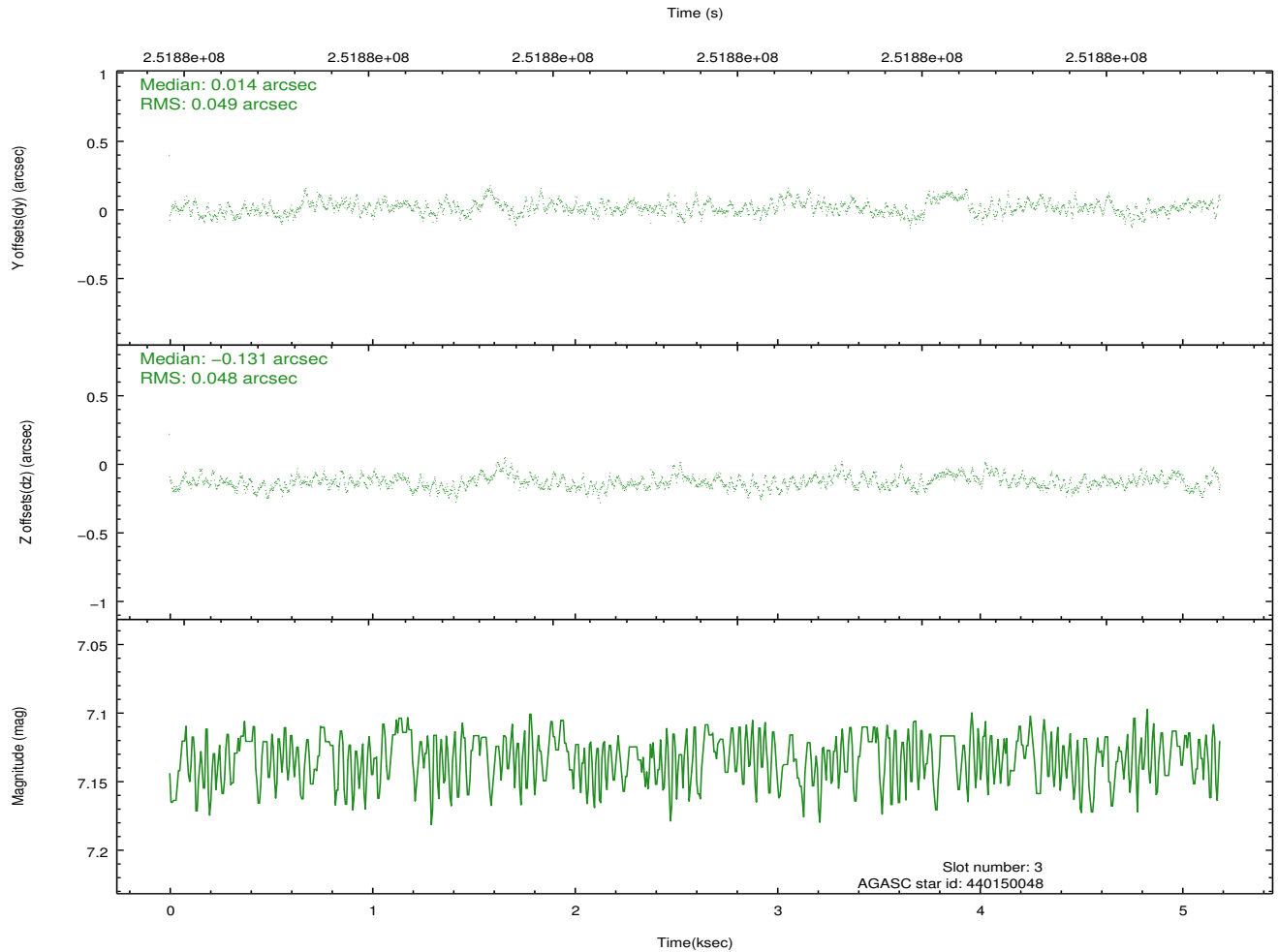
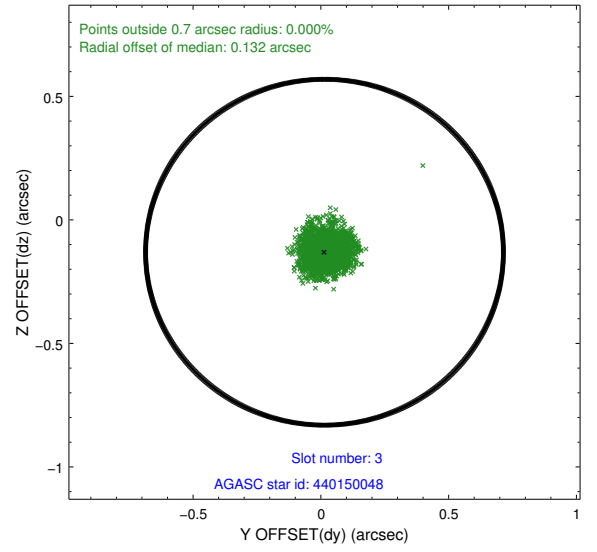
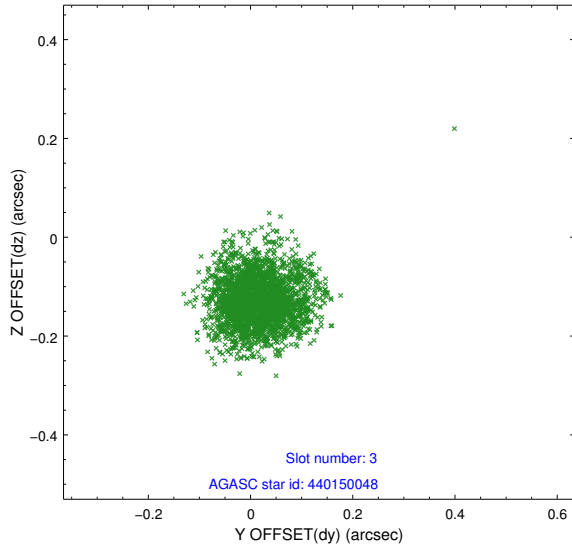


Slot Statistics

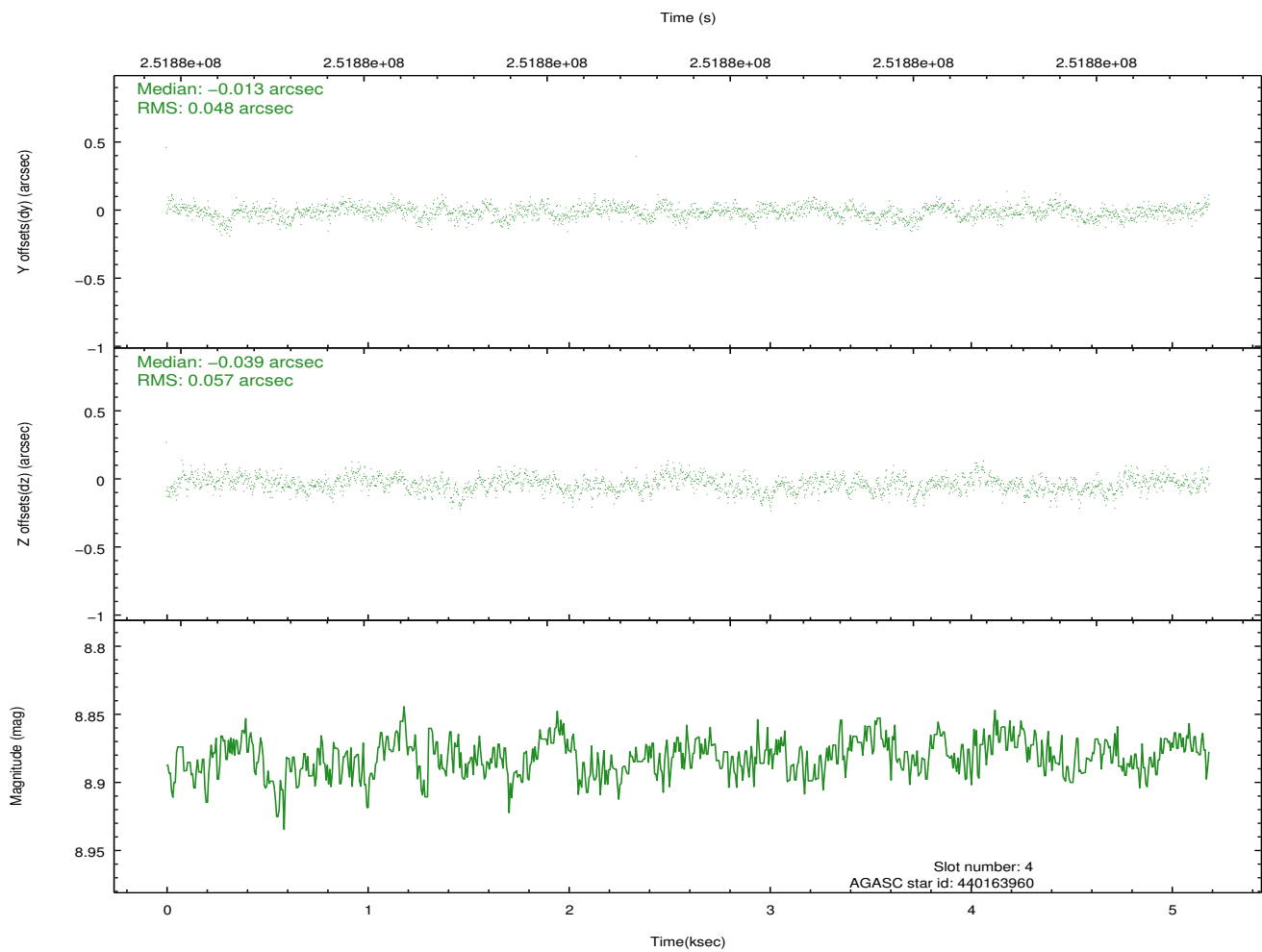
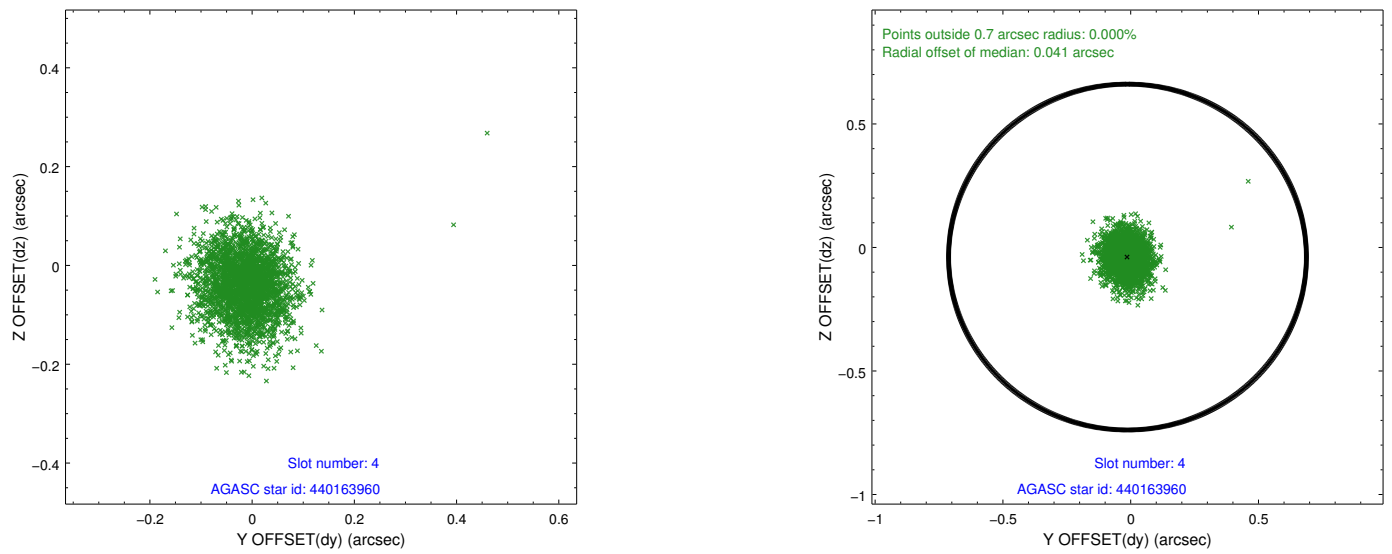
slot	status	id	mag	n_pts	med_dy	med_dz	dr1	dr2	ra	dec	mean_y	mean_z
0	FID	HRC-I-2	7.02	1266	-0.040	0.002	0.009	0.016	0.000000	0.000000	847.12	-1114.65
1	FID	HRC-I-3	7.05	1266	0.005	-0.109	0.010	0.016	0.000000	0.000000	-1193.28	1190.51
2	FID	HRC-I-4	6.97	1265	0.152	0.019	0.009	0.020	0.000000	0.000000	1276.54	1190.05
3	GUIDE	440150048	7.13	2532	0.014	-0.131	0.071	0.119	79.112838	46.416060	-613.12	-1292.63
4	GUIDE	440163960	8.88	2529	-0.013	-0.039	0.078	0.129	79.298370	45.827072	132.53	744.98
5	GUIDE	440164960	8.31	2532	0.116	-0.027	0.070	0.116	79.132526	46.140947	-122.27	-430.13
6	GUIDE	438441368	9.98	2529	-0.084	0.291	0.160	0.274	78.646413	46.420494	352.70	-1930.45
7	GUIDE	438450792	8.81	2530	-0.031	-0.088	0.093	0.148	78.654240	46.382628	410.82	-1805.55

2.4 Star Slots

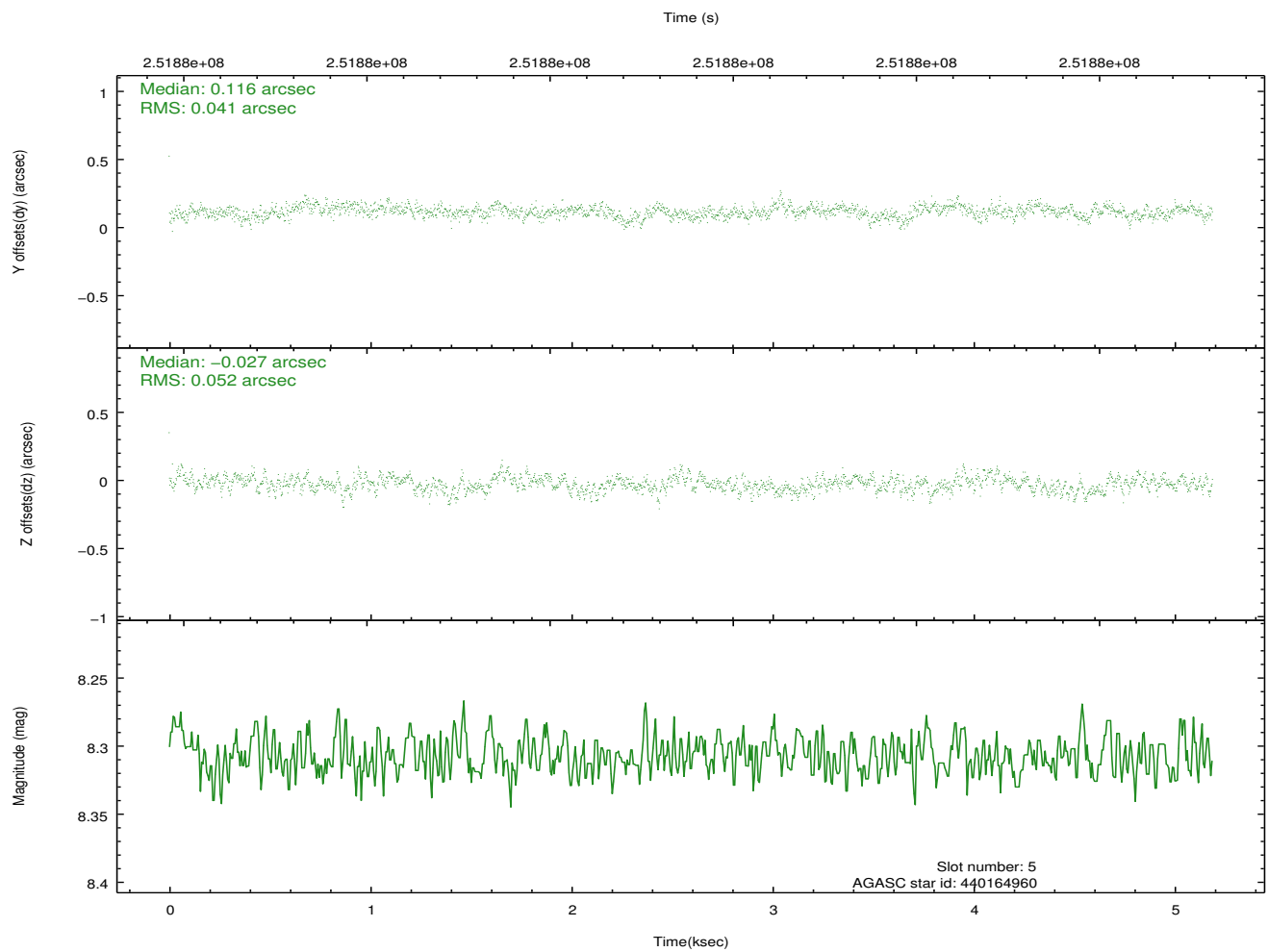
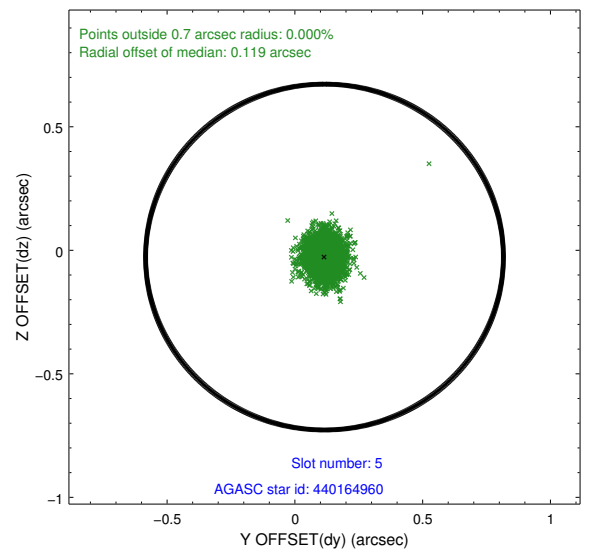
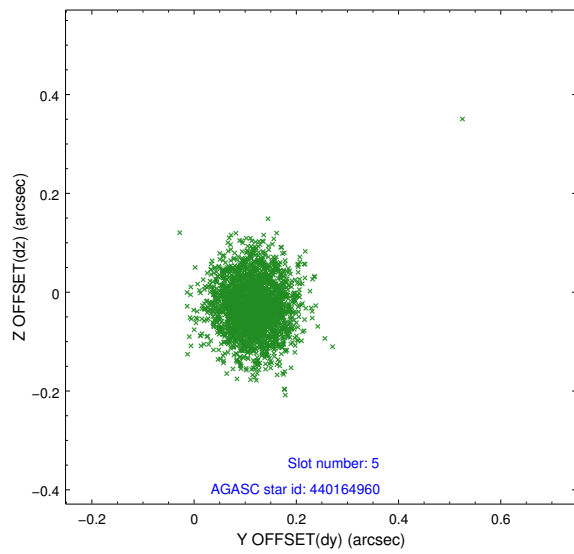
2.4.1 Slot 3



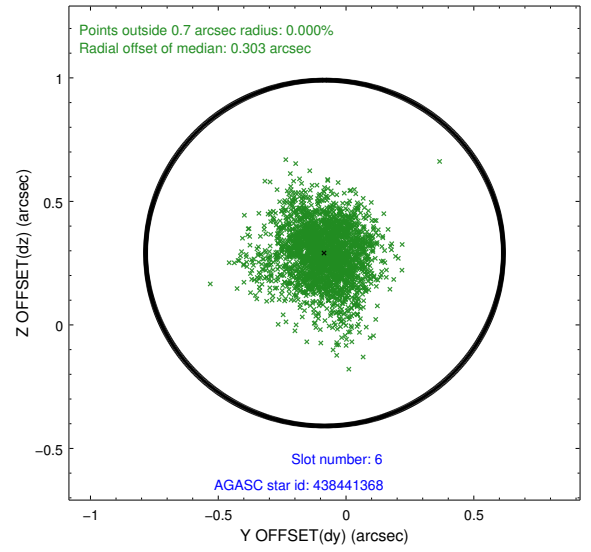
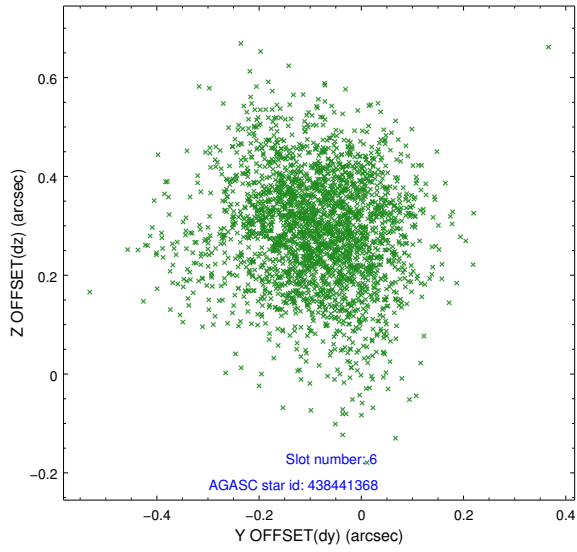
2.4.2 Slot 4



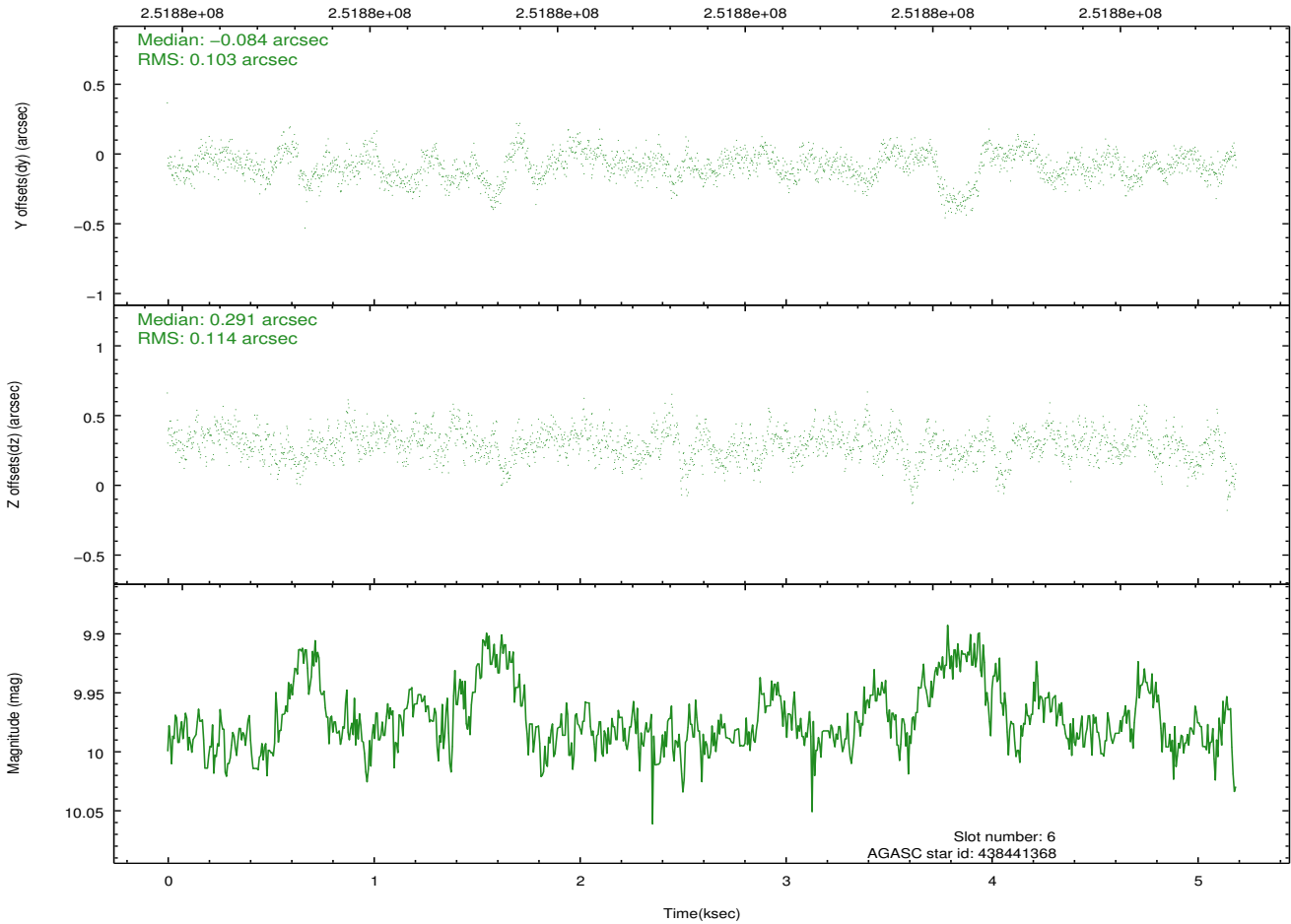
2.4.3 Slot 5



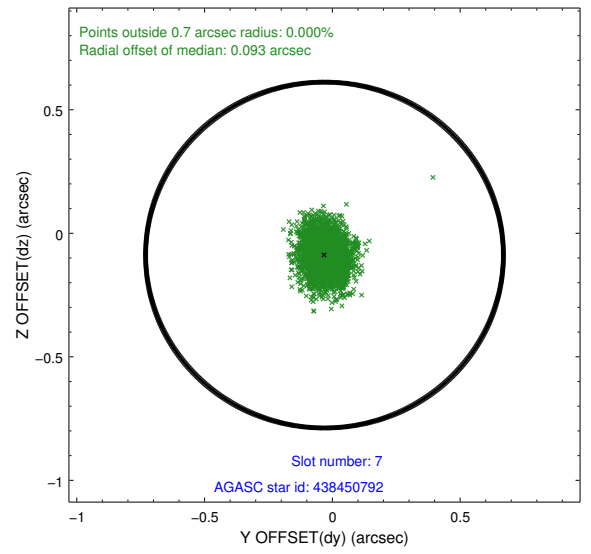
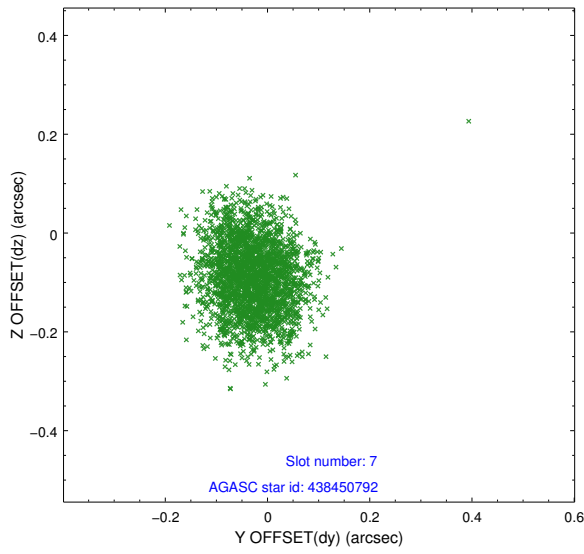
2.4.4 Slot 6



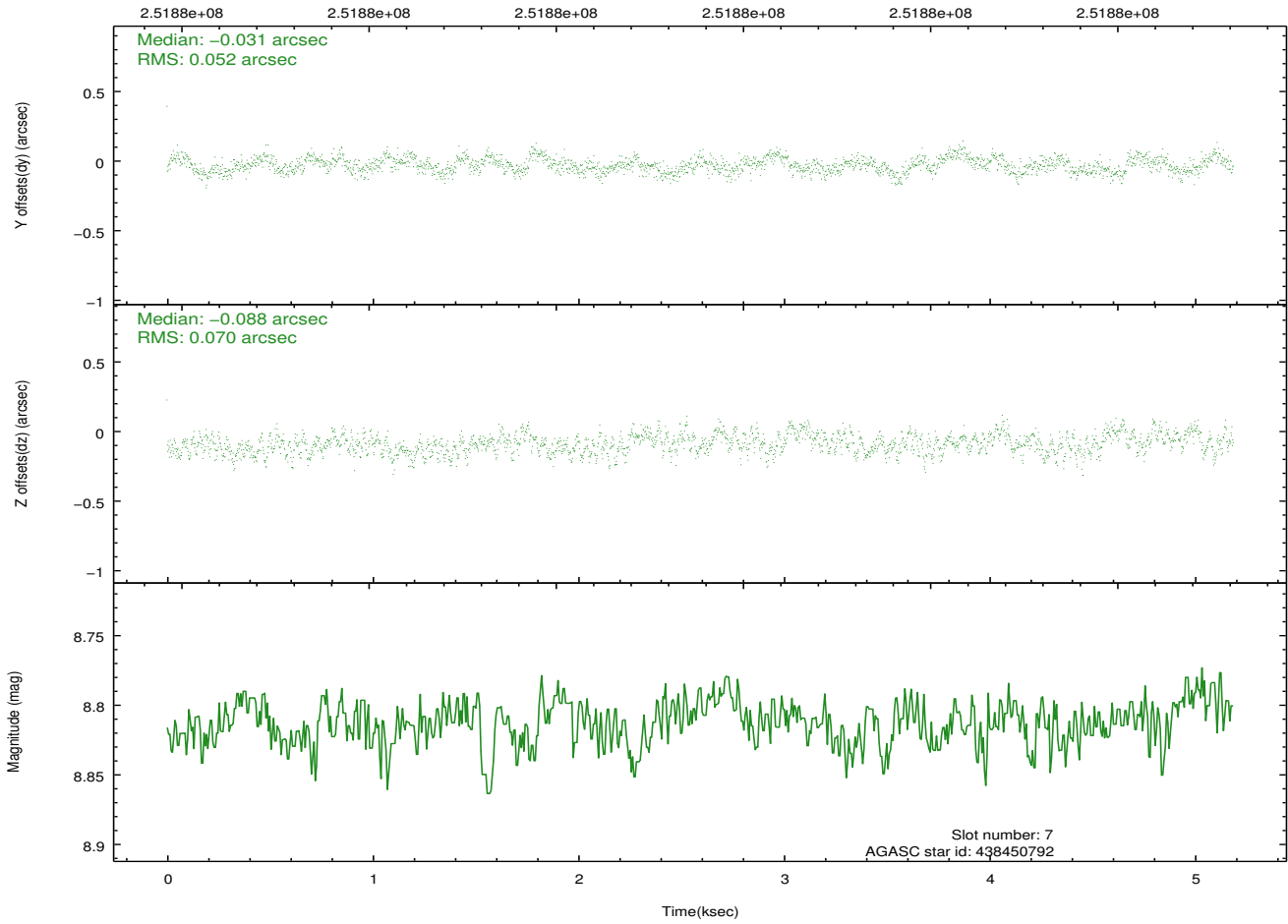
Time (s)



2.4.5 Slot 7

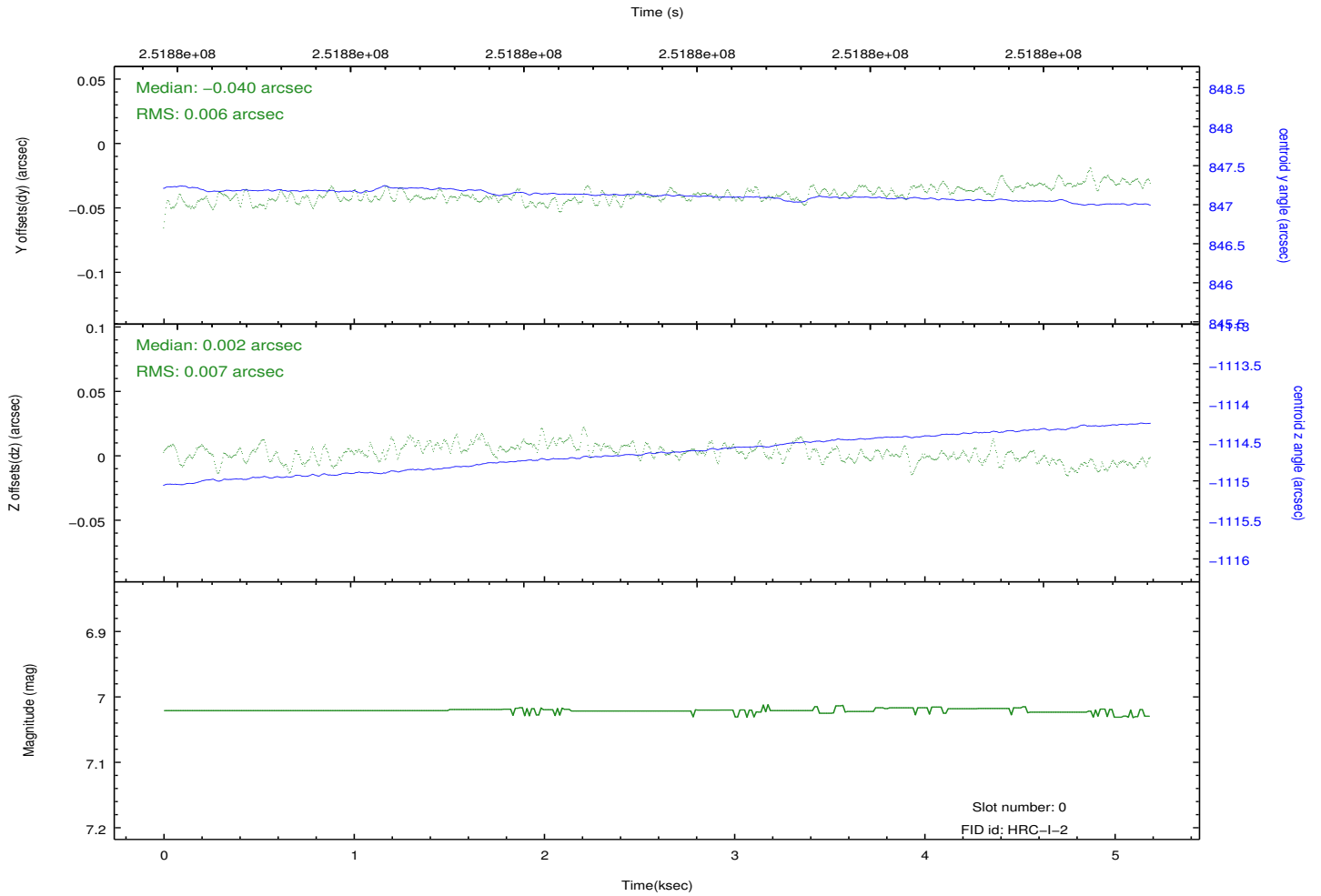
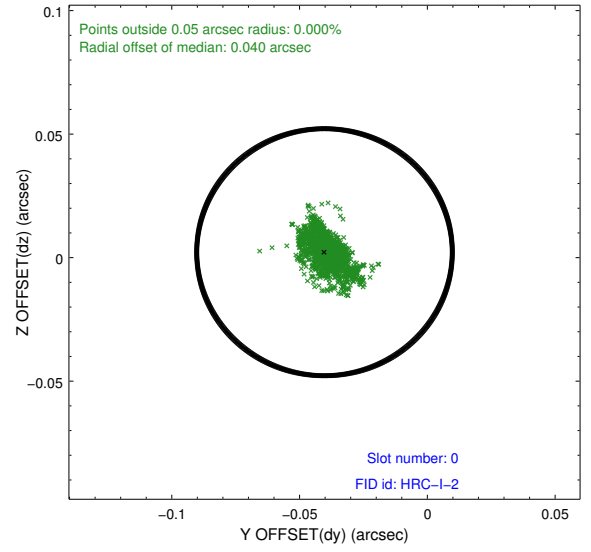
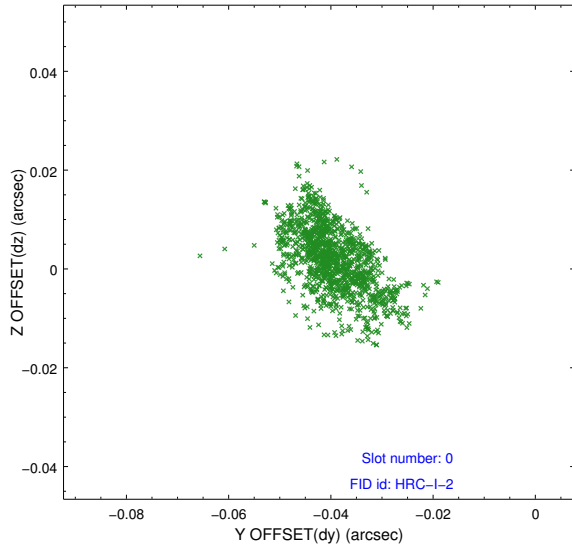


Time (s)

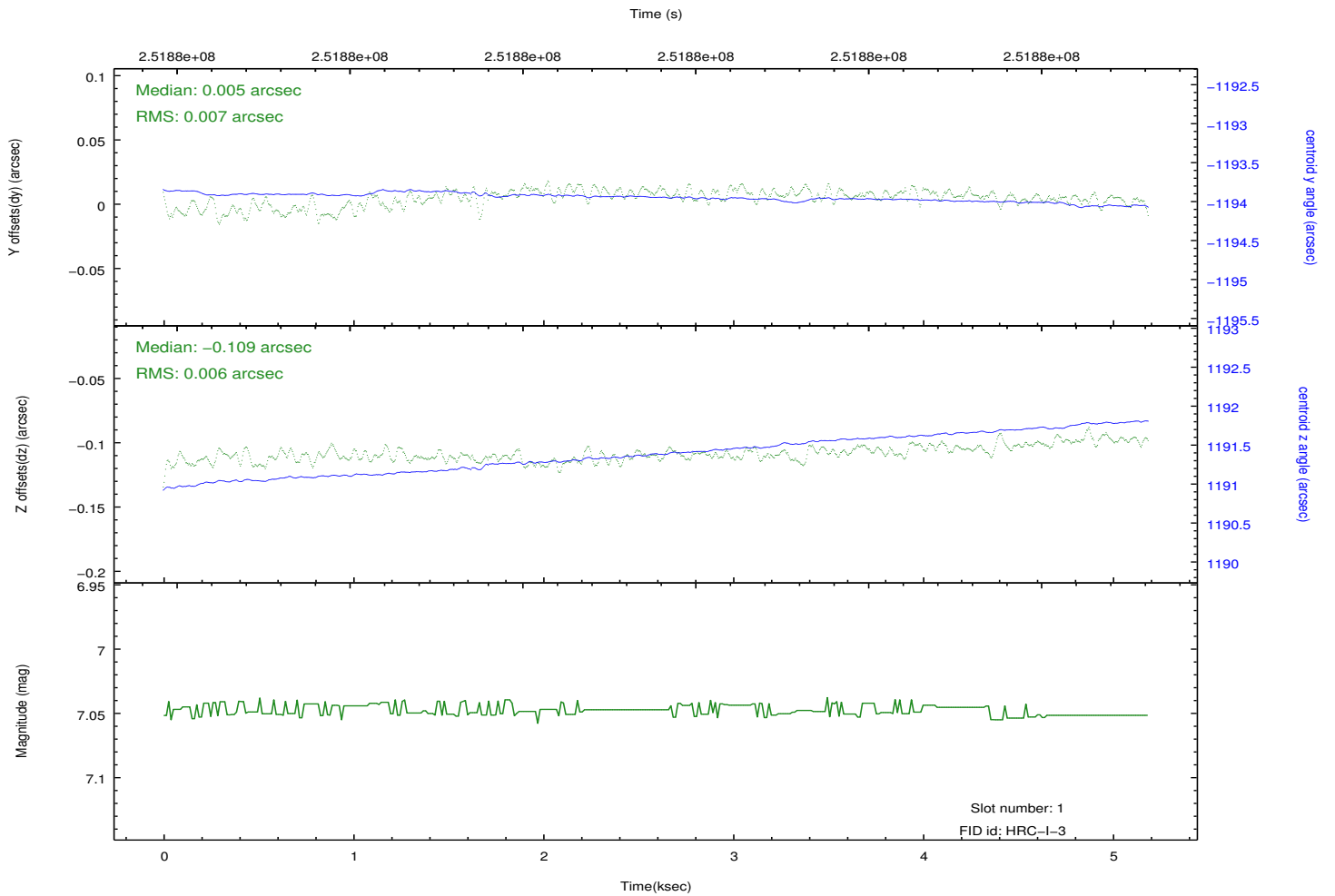
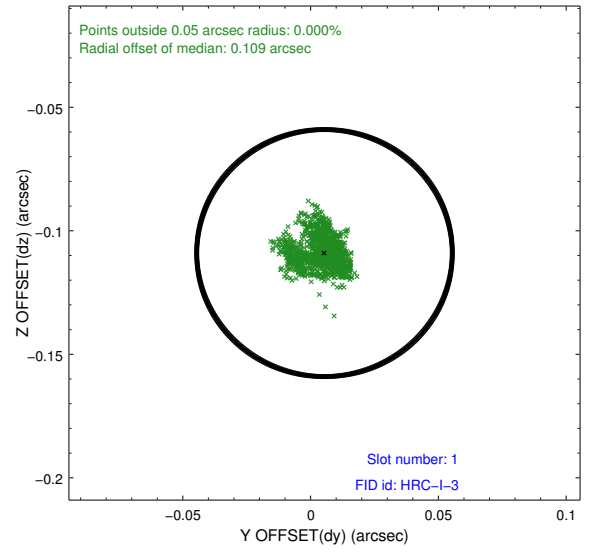
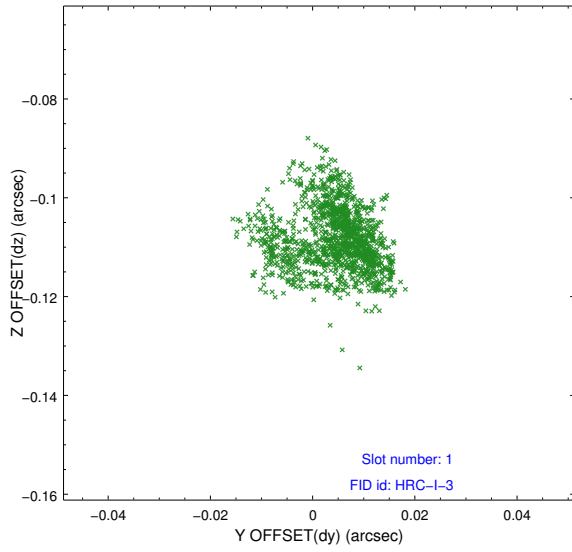


2.5 FID Slots

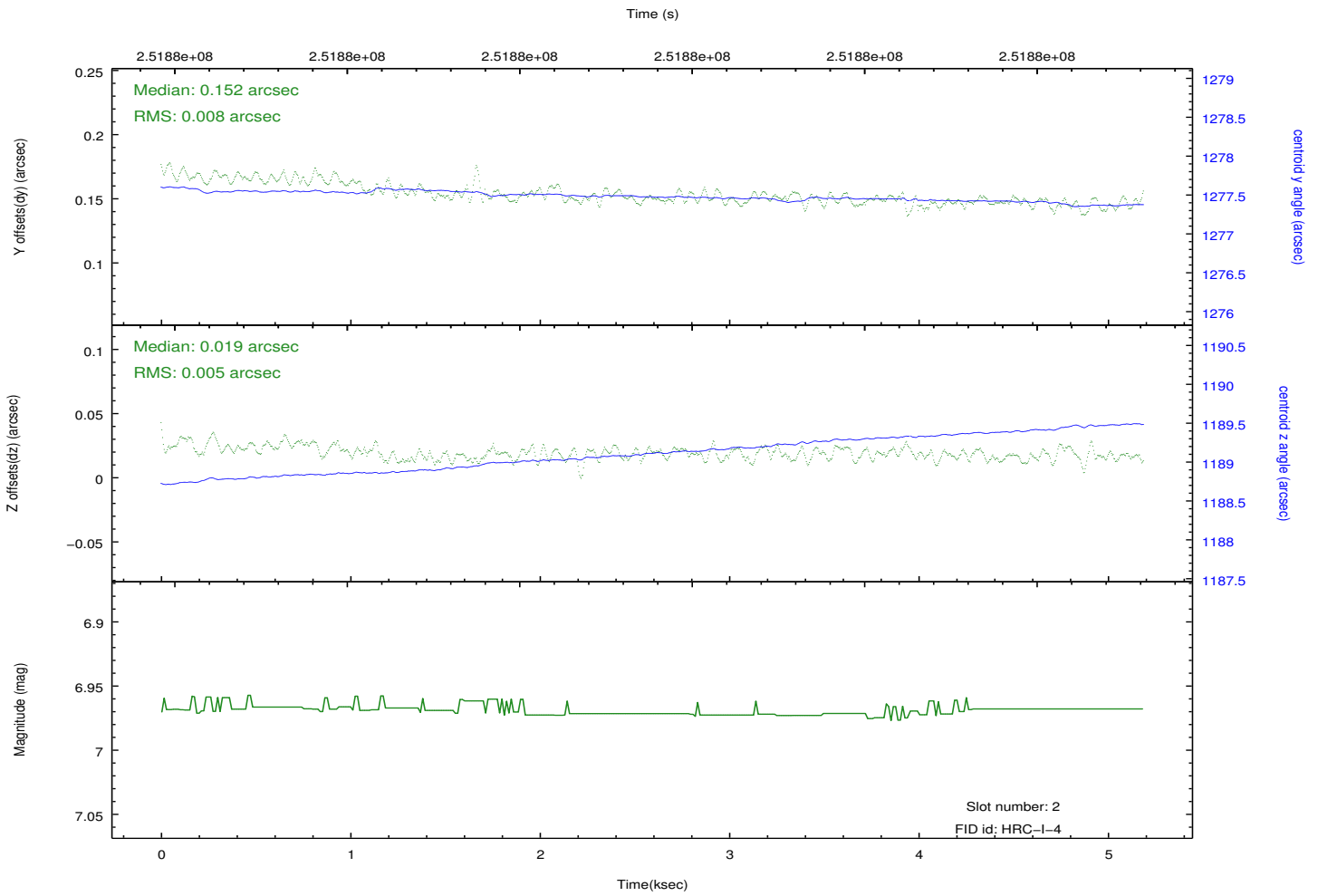
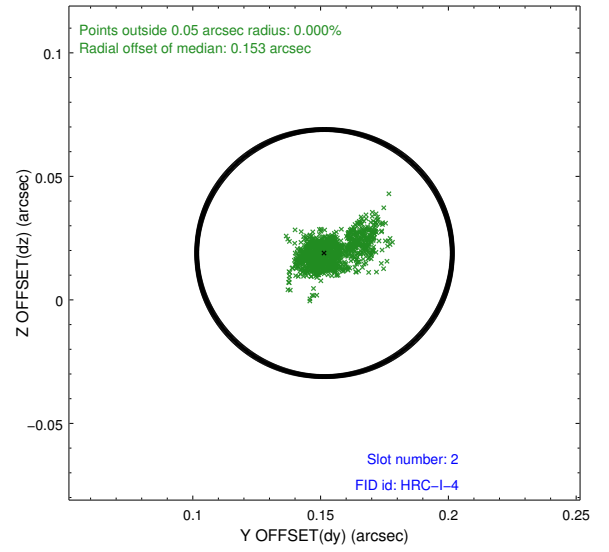
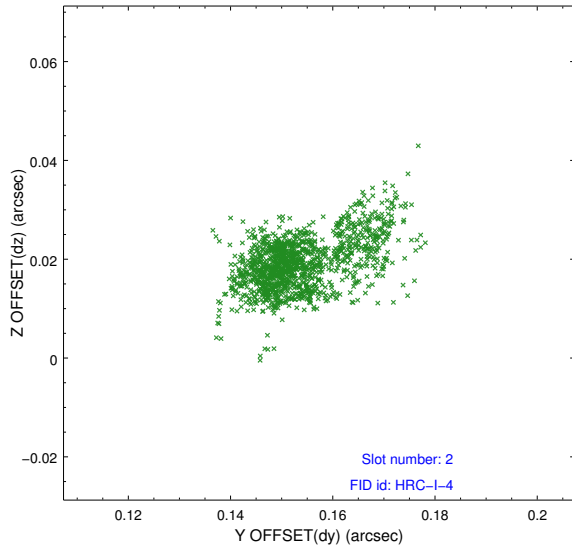
2.5.1 Slot 0



2.5.2 Slot 1



2.5.3 Slot 2



A Summary

A.1 Status

V&V Scientist	Jen Lauer
V&V Date (YYYY-MM-DD)	2012.08.12
V&V Edition	1
V&V Disposition and Status	OK
V&V Charge Time	5.187525

A.2 Comments