

V&V Reference Report

L2 ASCDS Version : 8.4.3

Observation 6789 - L2 Version 2
Chandra X-Ray Center

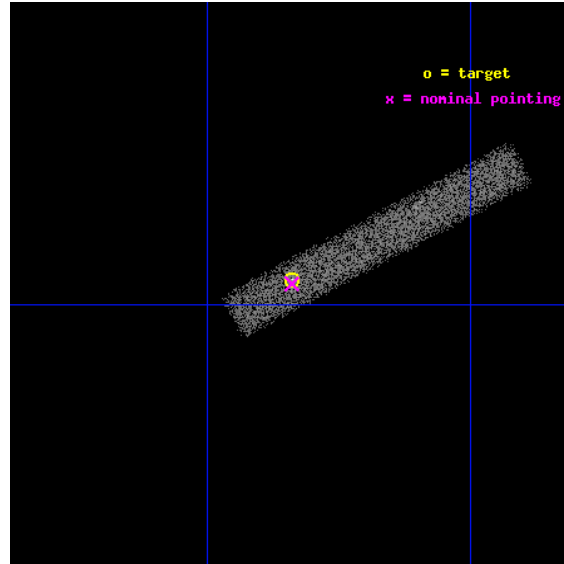
L2 Processing Date : Mar 16 2012

Contents

1	Front	2
2	OBI	3
2.1	OBI	3
2.1.1	Images	3
2.1.2	Bias	3
2.1.3	Parameters	4
2.1.4	Events	4
2.2	Compared Parameters	5
2.3	Aspect	6
2.4	Star Slots	9
2.4.1	Slot 3	9
2.4.2	Slot 4	10
2.4.3	Slot 5	11
2.4.4	Slot 6	12
2.4.5	Slot 7	13
2.5	FID Slots	14
2.5.1	Slot 0	14
2.5.2	Slot 1	15
2.5.3	Slot 2	16
A	Summary	17
A.1	Status	17
A.2	Comments	17

1 Front

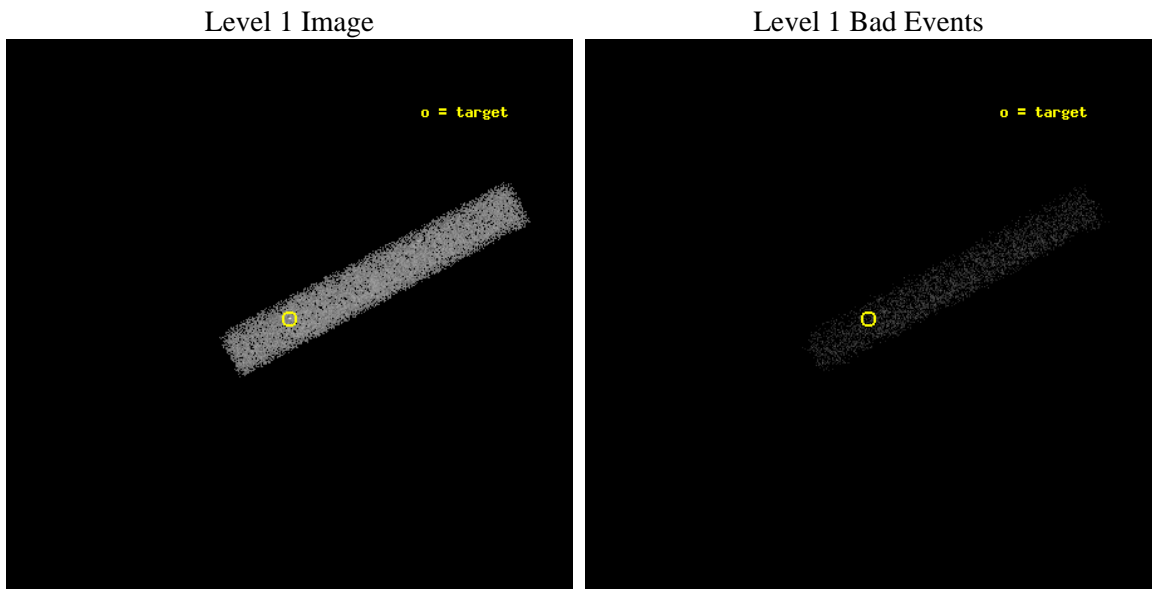
seq_num	701207	Sequence number
obs_id	6789	Observation id
title	Active Galactic Nuclei in nearby galaxies: a new view of the origin of the radio-loud radio-quiet dichotomy?	Proposal title
observer	Dr. Alessandro Capetti	Principal investigator
object	UGC10656	Source name
dtcycle	0	
cycle	P	events from which exps? Prim/Second/Both
ra_targ	255.209583	Observer's specified target RA [deg]
dec_targ	23.011111	Observer's specified target Dec [deg]
ra_nom	255.20990697891	Nominal RA [deg]
dec_nom	23.009034544955	Nominal Dec [deg]
roll_nom	332.14462558568	Nominal Roll [deg]
revision	2	Processing version of data
ontime	16682.000248551	Sum of GTIs [s]
liveltime	15129.693677264	Livetime [s]
ontime7	16682.000248551	Sum of GTIs [s]
l2events	10921	Number of level 2 events



2 OBI

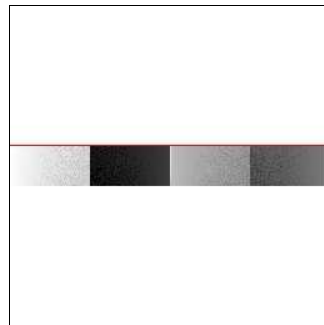
2.1 OBI

2.1.1 Images



2.1.2 Bias

Chip 7



2.1.3 Parameters

obi_num	0	Obi number	sched_exp_time	16500.000000	[s] Scheduled observation exposure time
ascdsver	8.4.3	Processing system revision	ontime	16682.000248551	Sum of GTIs [s]
caldbver	4.4.8	 	ontime7	16682.000248551	Sum of GTIs [s]
date	2012-03-17T01:23:52	Date and time of file creation	l1events	26359	Number of level 1 events
revision	2	Processing version of data			

2.1.4 Events

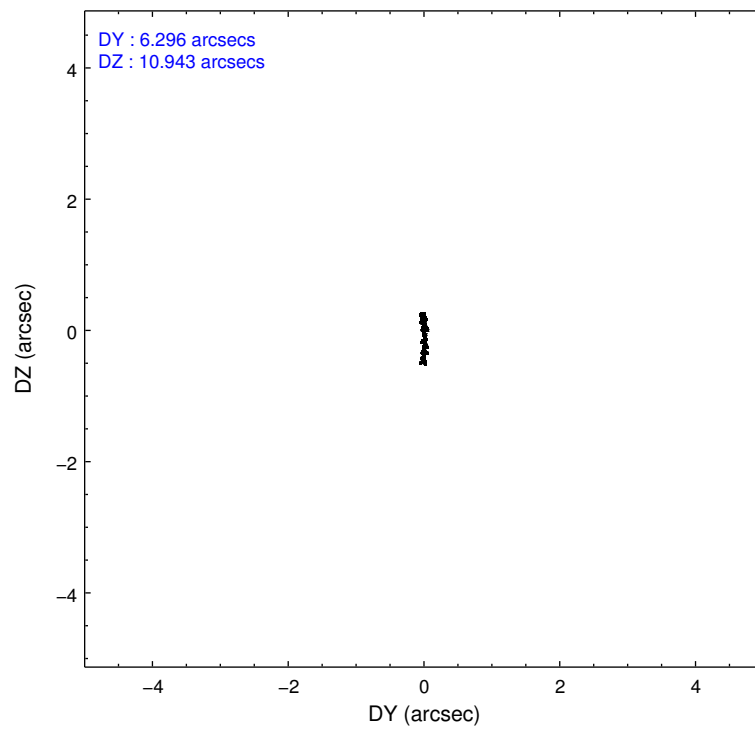
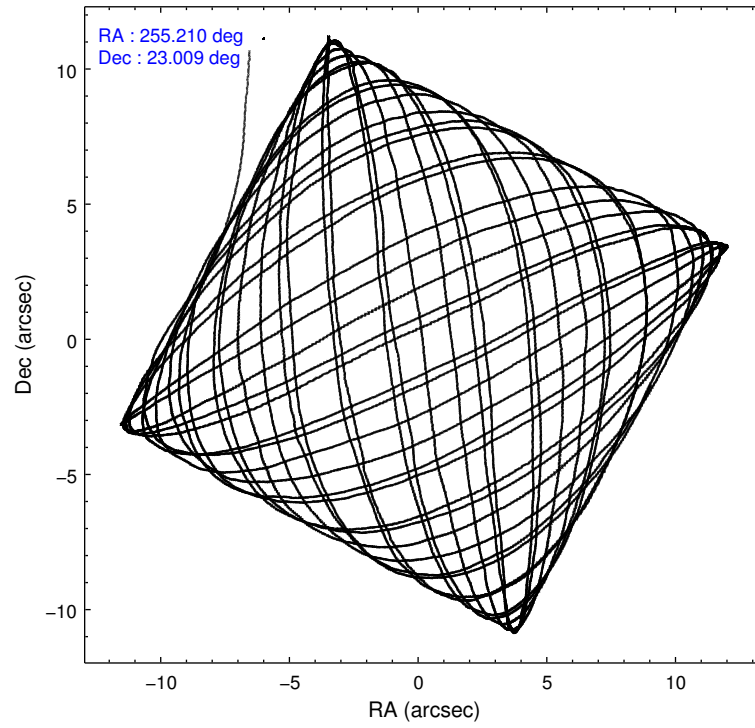
	ccd 7
level 1 events	26359
rejected events	14986
rejected %	56%

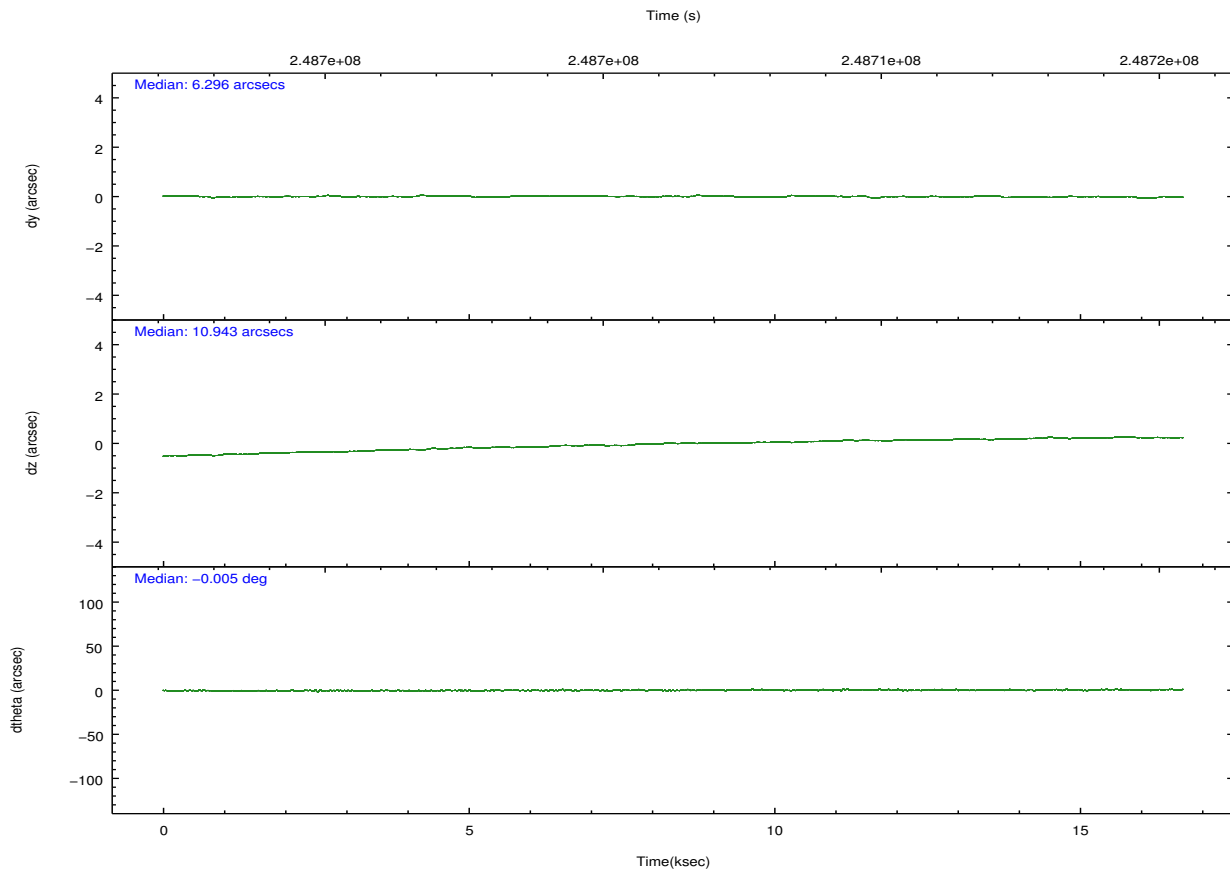
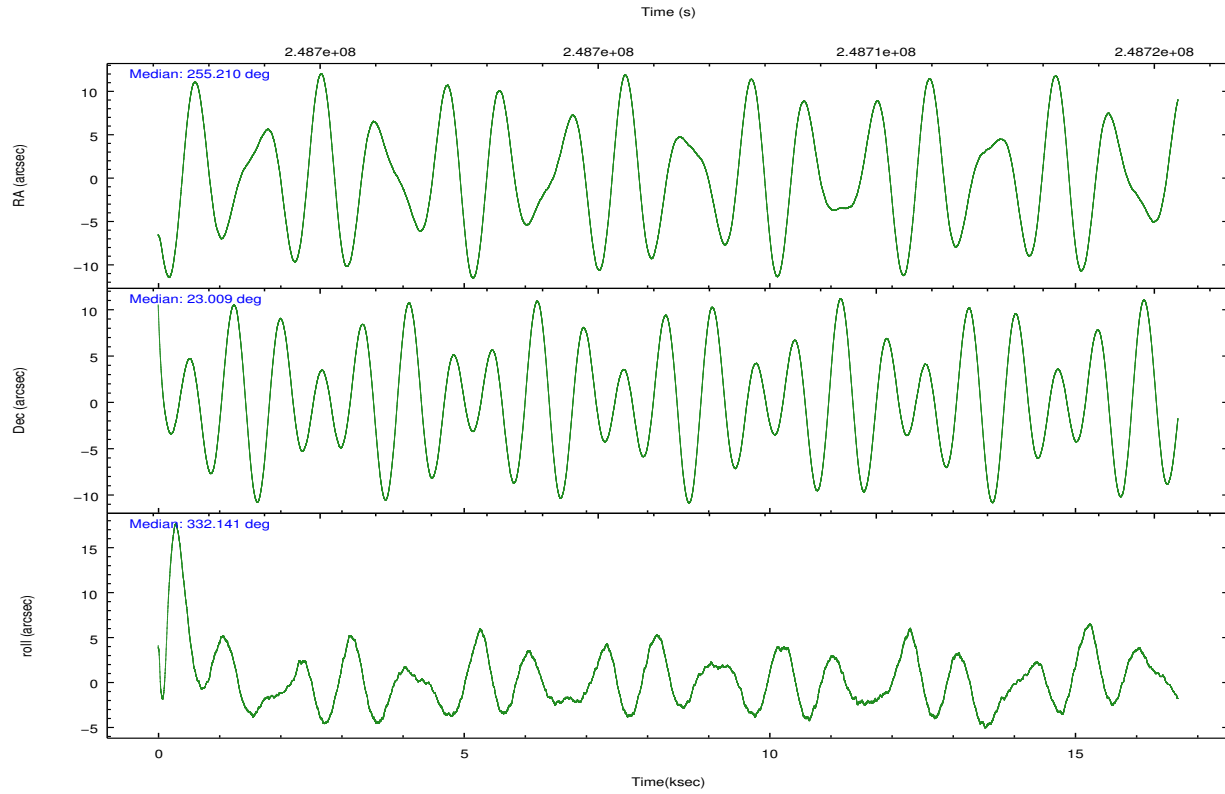
	ccd 7
grade 0 events	1310
	4%
grade 1 events	28
	0%
grade 2 events	2340
	8%
grade 3 events	1528
	5%
grade 4 events	1538
	5%
grade 5 events	2444
	9%
grade 6 events	5669
	21%
grade 7 events	11502
	43%

2.2 Compared Parameters

Parameter	Planned	Actual	Parameter	Planned	Actual
Instrument	ACIS	ACIS	Obspar format version number	7	7
Detector	ACIS-7	ACIS-7	Obspar file type	PREDICTED	ACTUAL
Grating	NONE	NONE	Obspar update status	NONE	UPDATED
Data mode	VFAINT	VFAINT	Number of optional ACIS chips dropped	0	0
Observation mode	POINTING	POINTING	On-chip summing requested	N	N
[deg] Pointing RA	255.180381	255.2099069789111	Subarray requested	CUSTOM	1/8
[deg] Pointing Dec	23.007664	23.00903454495536	Subarray start row	449	449
[deg] Pointing Roll	331.999539	332.1446255856773	Subarray row count	128	128
[mm] SIM focus pos	-0.684267	-0.6828225247311905	Alternating exposures requested	N	N
[mm] SIM defocus	0	0.001444936568705701	[s] Primary exposure time	0.000000	0.4
[mm] SIM translation stage pos	-190.132523	-190.1400660498719			
[mm] SIM translation stage offset	0	0.00754346686406393			
[s] Observation start time (MET)	248698096.184000	248696398.39186			
Observation start date	2005-11-18T10:47:12	2005-11-18T10:19:58			
[s] Observation end time (MET)	248714596.184000	248715876.98026			
Observation end date	2005-11-18T15:22:12	2005-11-18T15:44:36			
Read mode	TIMED	TIMED			

2.3 Aspect



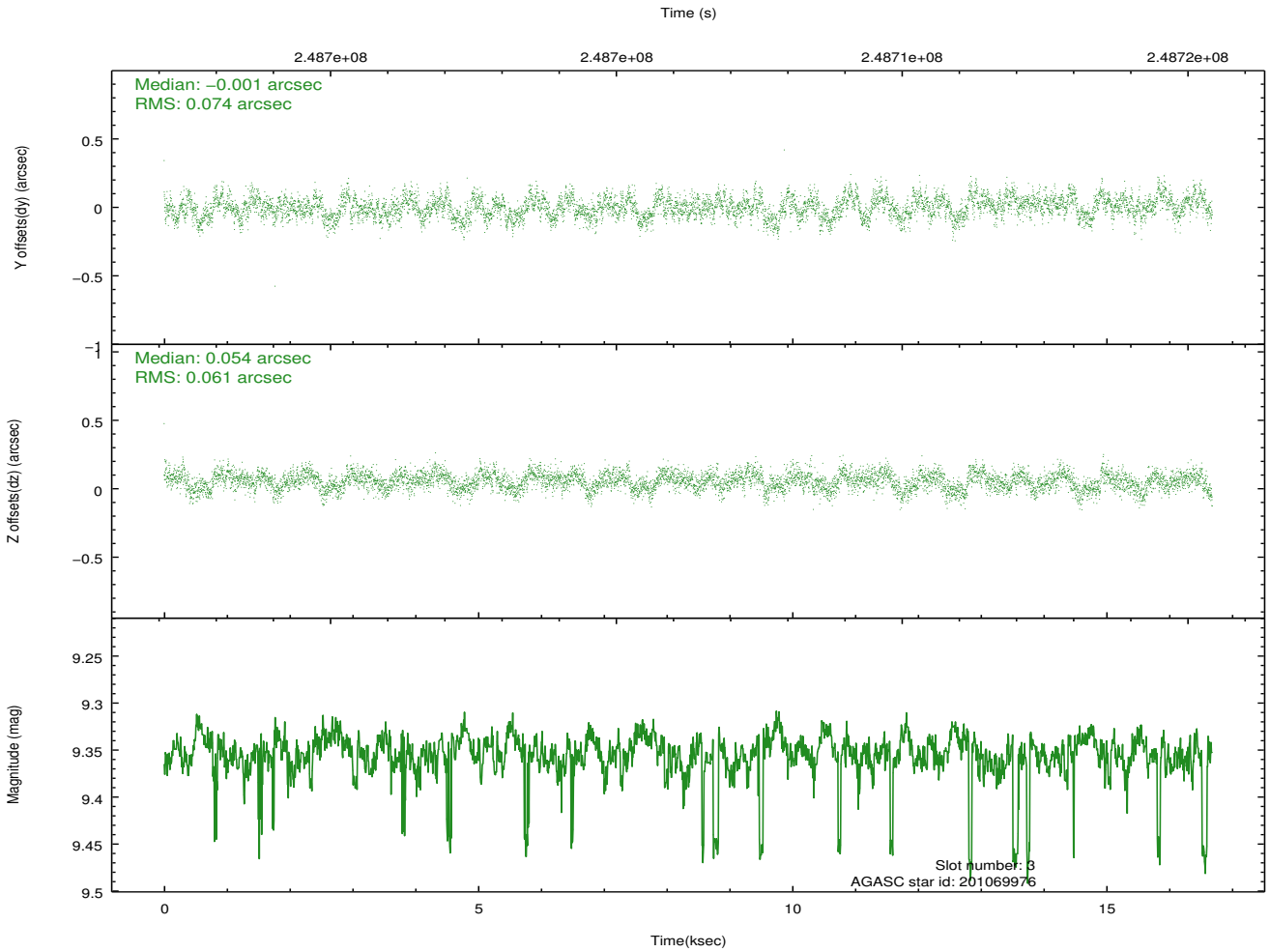
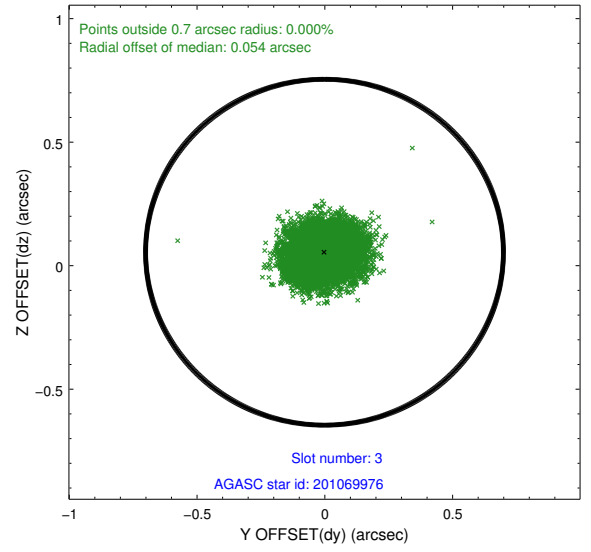
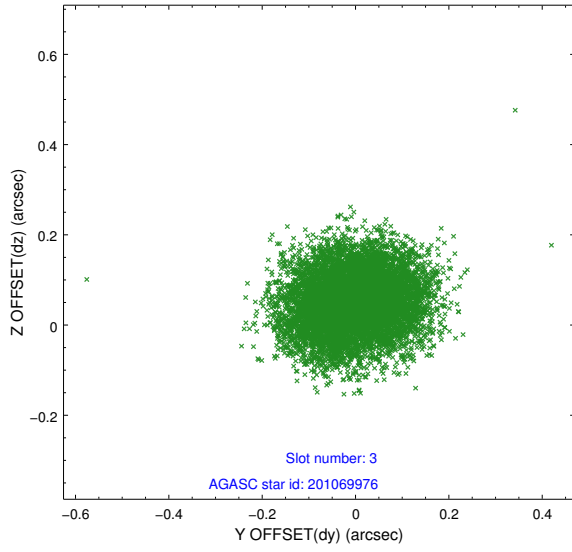


Slot Statistics

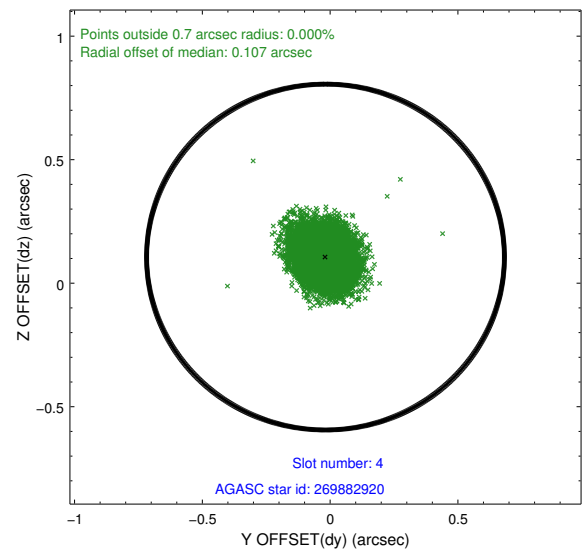
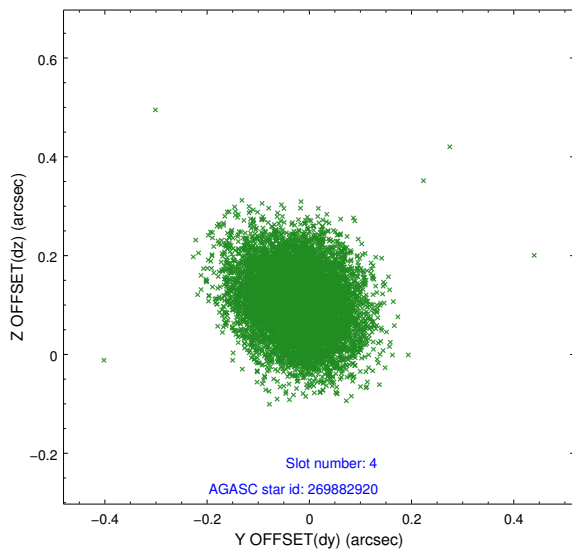
slot	status	id	mag	n_pts	med_dy	med_dz	dr1	dr2	ra	dec	mean_y	mean_z
0	FID	ACIS-S-2	7.09	4069	-0.063	-0.014	0.011	0.020	0.000000	0.000000	-759.07	-1732.18
1	FID	ACIS-S-4	7.20	4068	0.090	0.034	0.012	0.024	0.000000	0.000000	2154.22	176.13
2	FID	ACIS-S-5	7.23	4070	-0.059	-0.011	0.012	0.022	0.000000	0.000000	-1811.60	169.99
3	GUIDE	201069976	9.35	8093	-0.001	0.054	0.103	0.165	255.468249	22.373074	1918.66	-1566.23
4	GUIDE	269882920	9.16	8132	-0.018	0.106	0.097	0.153	255.325196	23.378229	-203.41	1402.88
5	GUIDE	269884304	9.65	8134	-0.035	0.095	0.095	0.156	254.304421	22.770704	-2170.36	-2110.43
6	GUIDE	270013920	8.62	8136	0.018	-0.122	0.063	0.102	255.499274	22.935963	1053.40	269.52
7	GUIDE	269880344	9.45	8134	0.040	-0.131	0.085	0.140	254.558609	23.327530	-2356.85	55.74

2.4 Star Slots

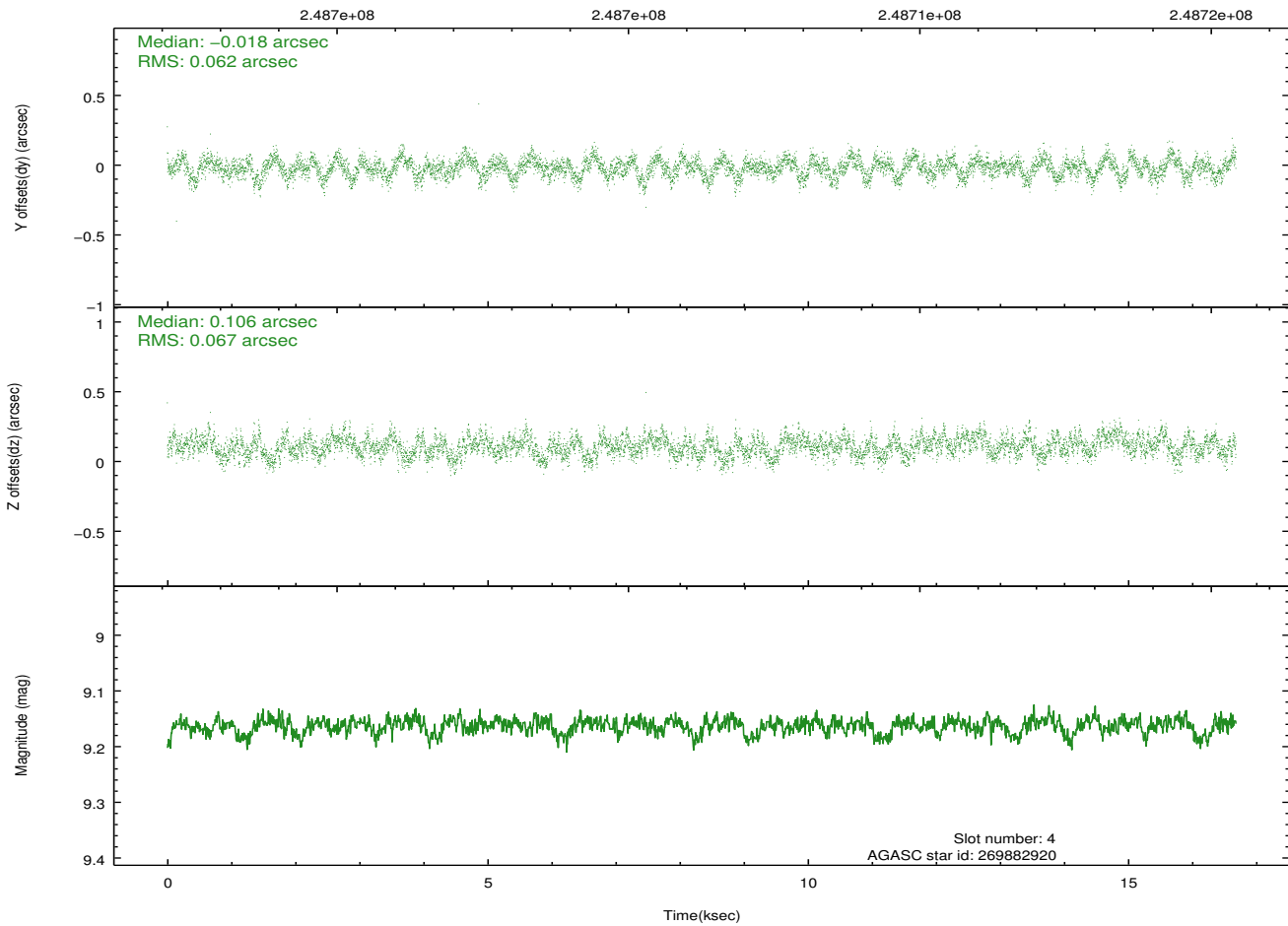
2.4.1 Slot 3



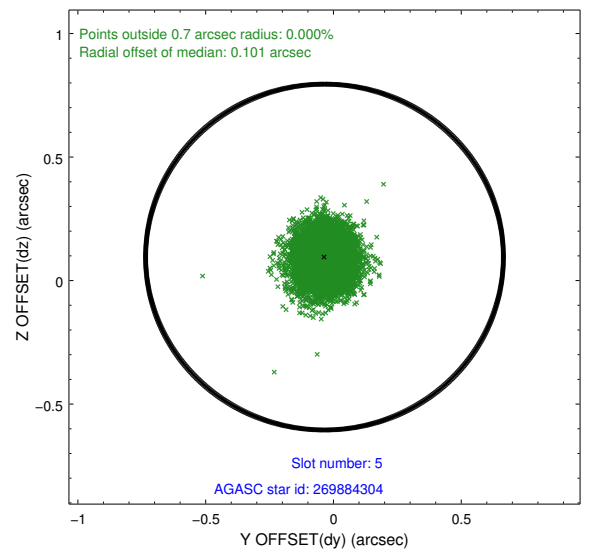
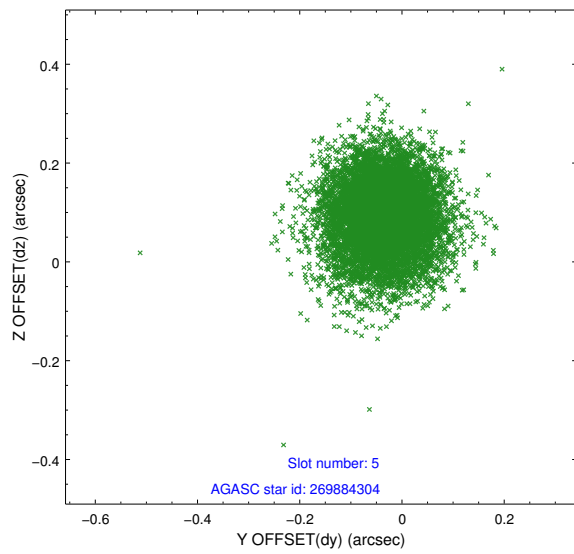
2.4.2 Slot 4



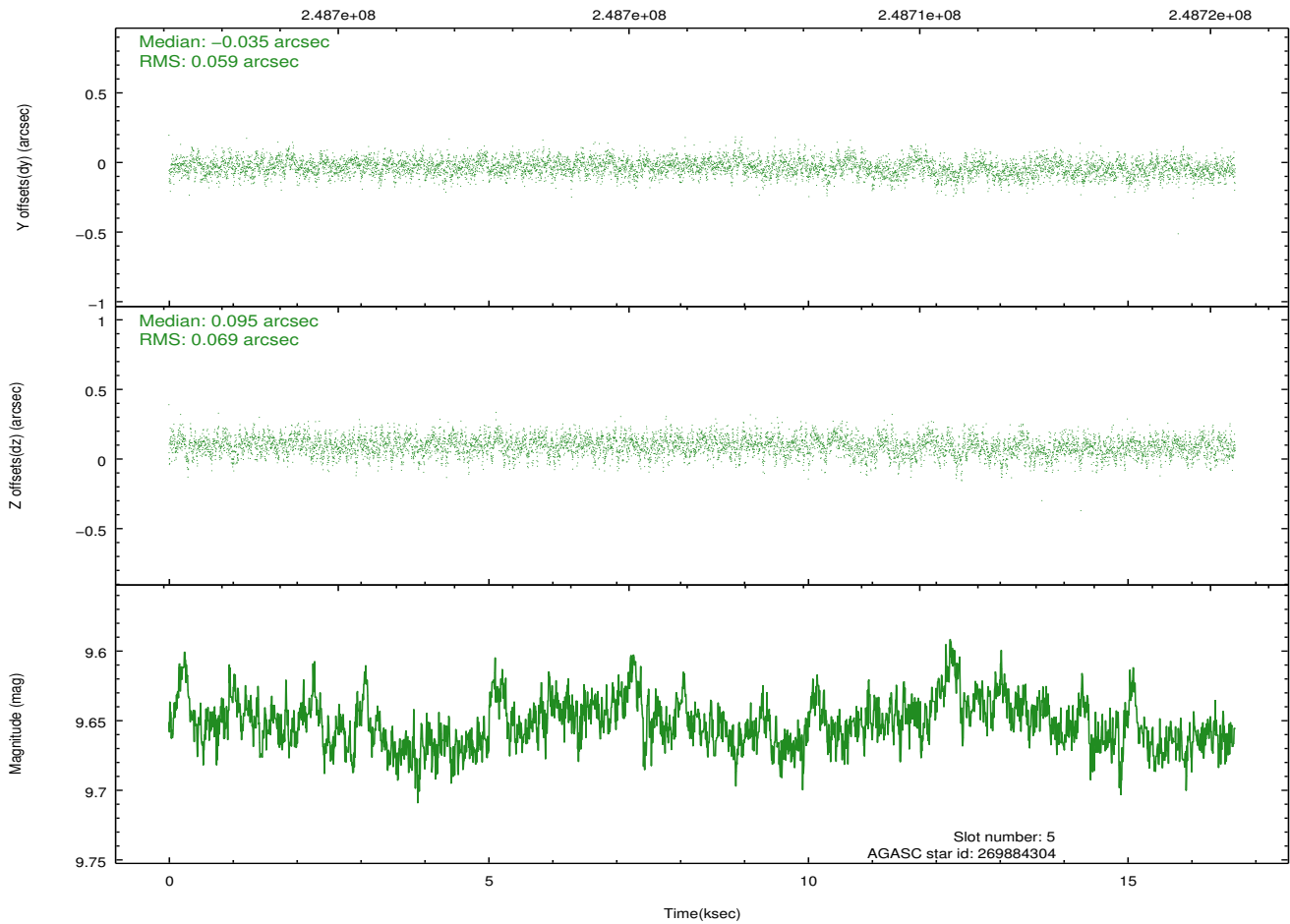
Time (s)



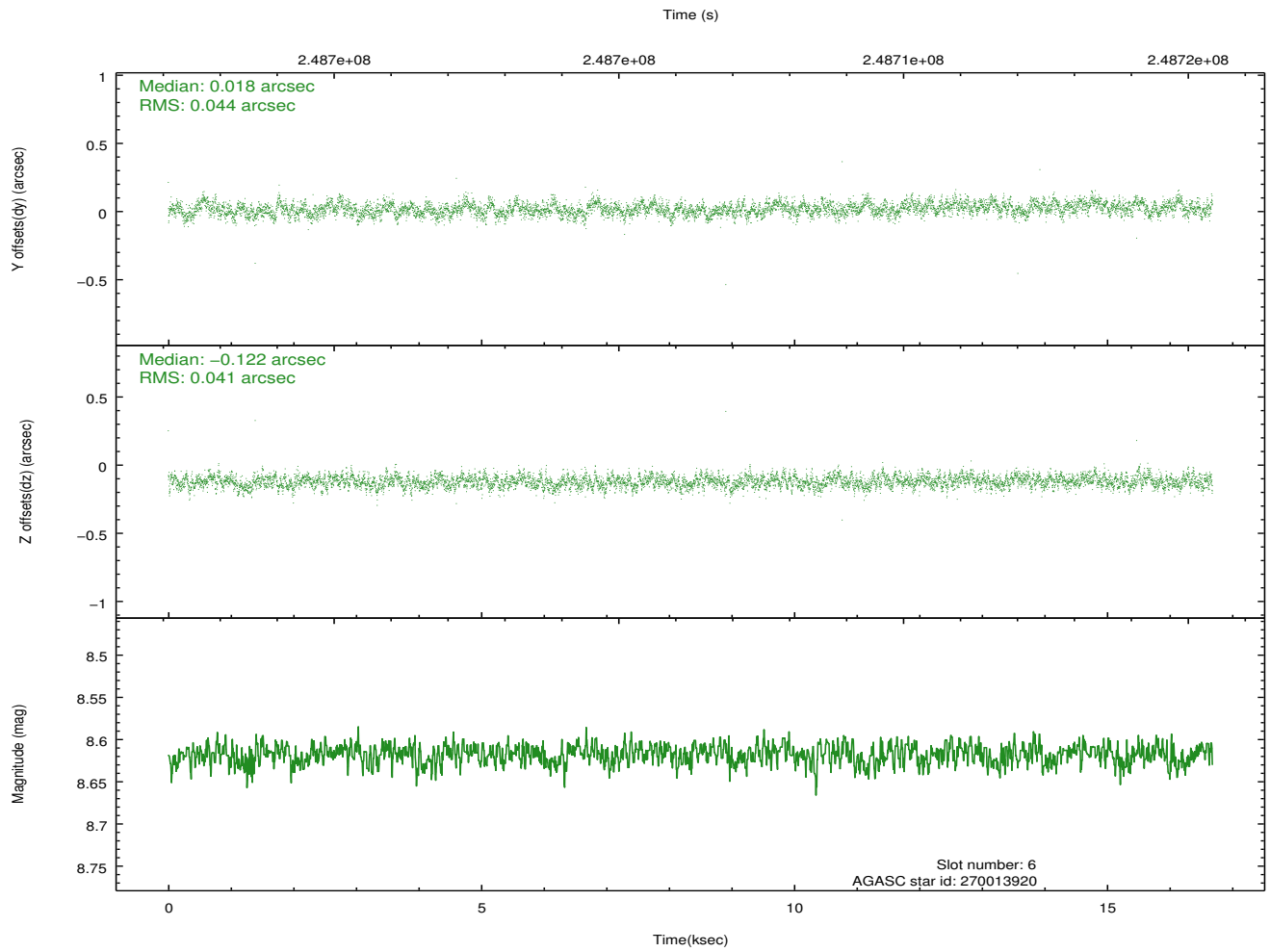
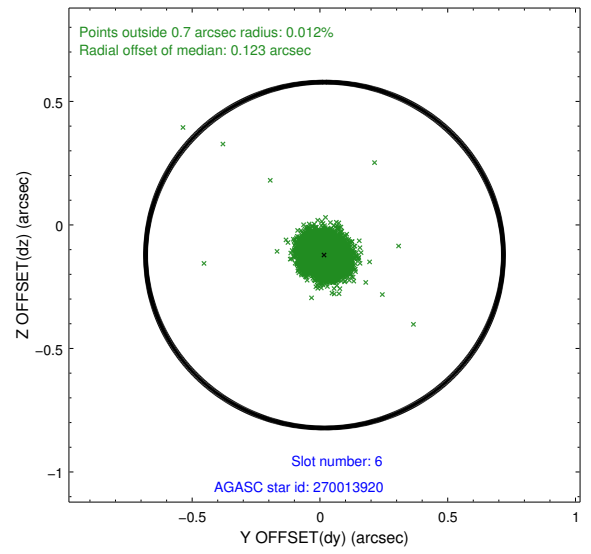
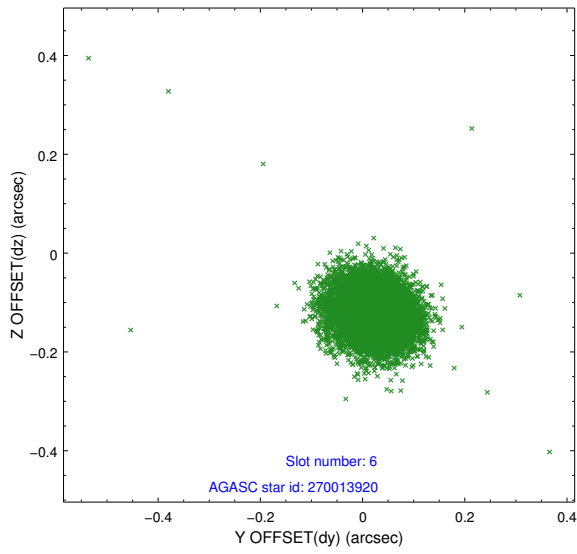
2.4.3 Slot 5



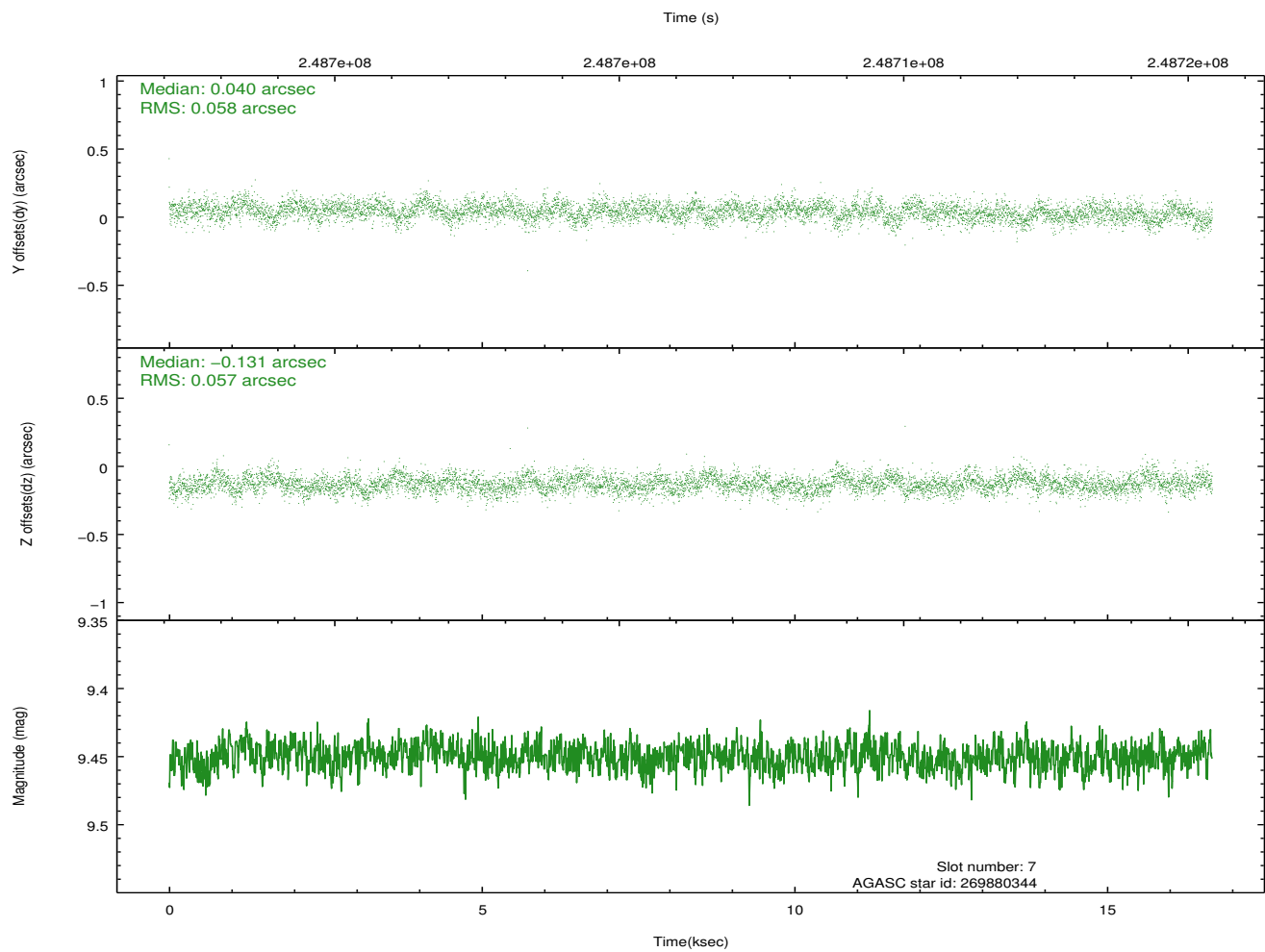
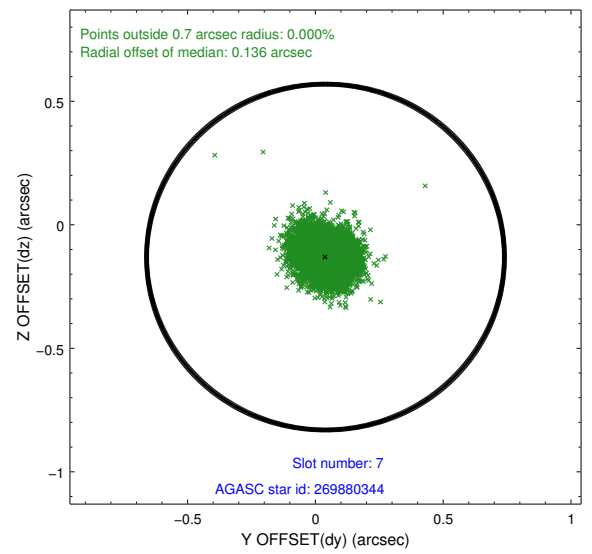
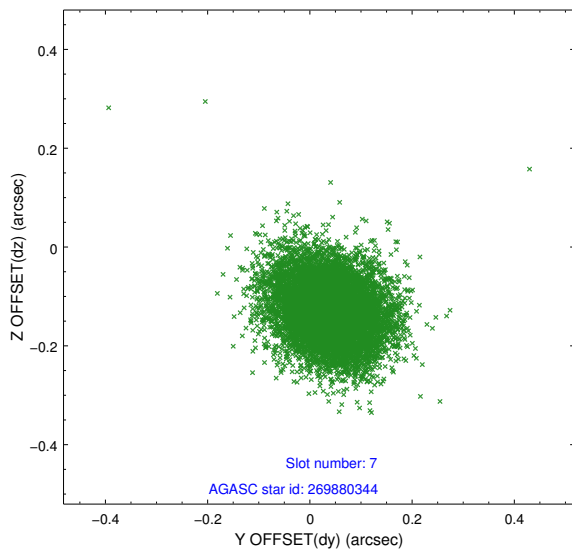
Time (s)



2.4.4 Slot 6

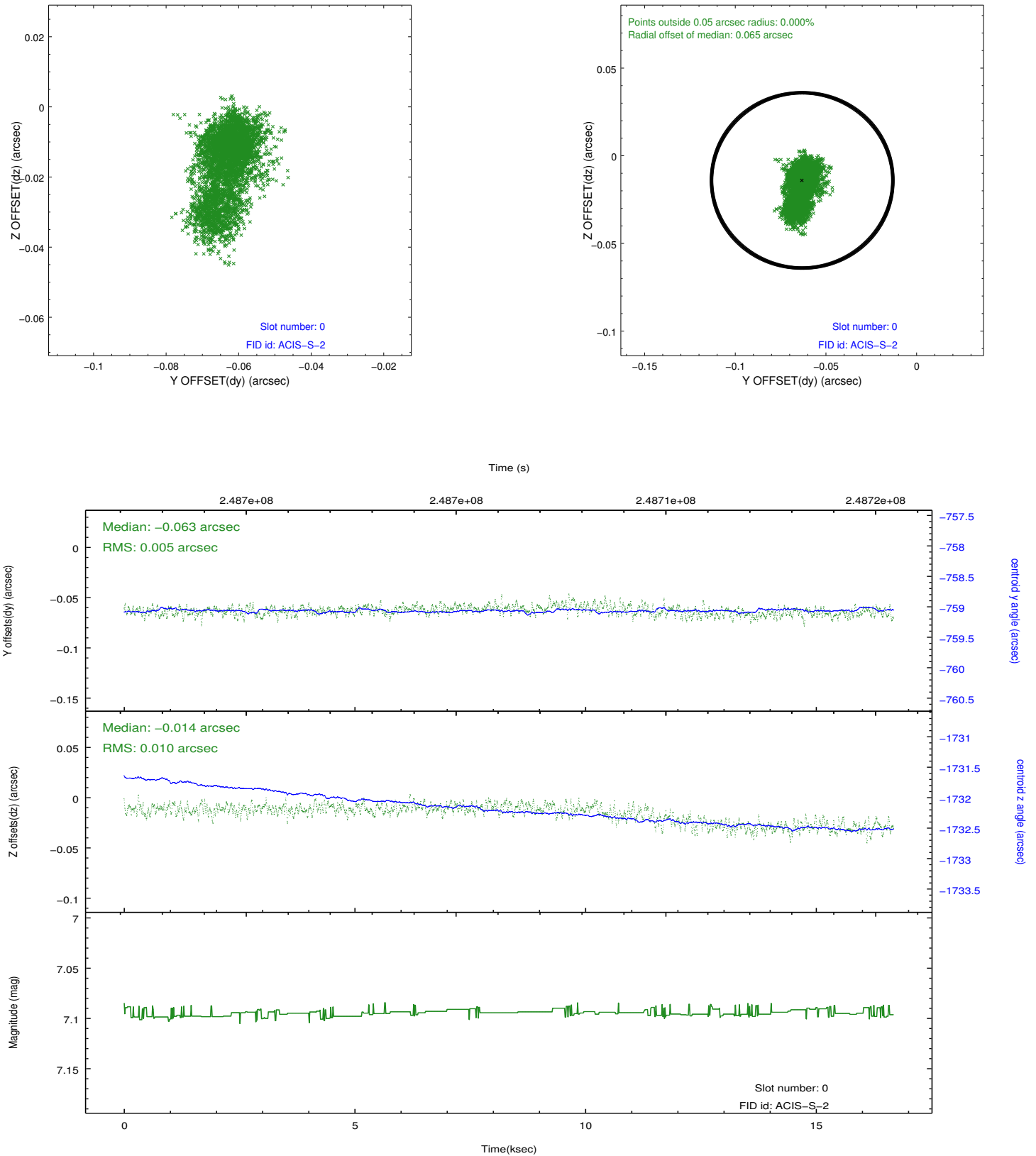


2.4.5 Slot 7

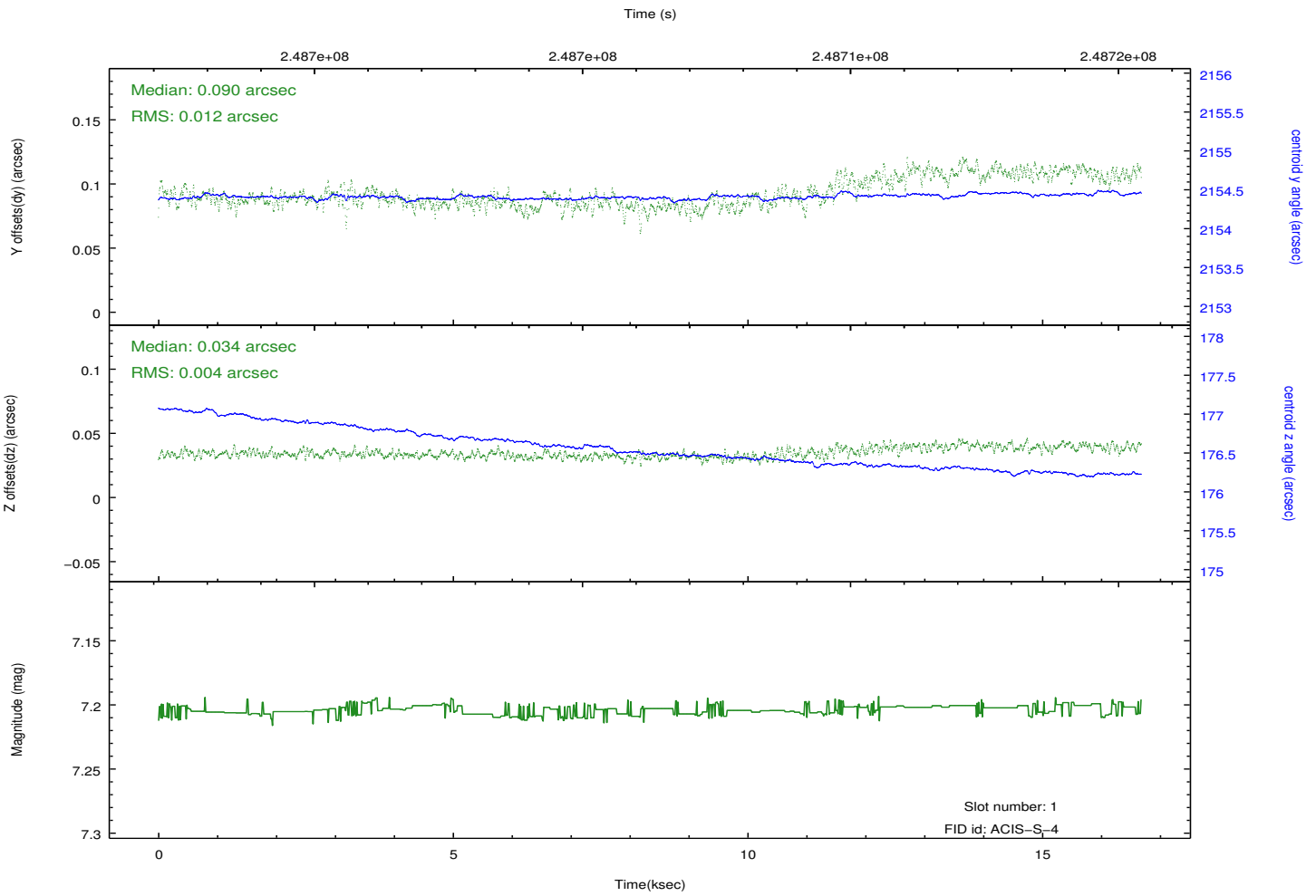
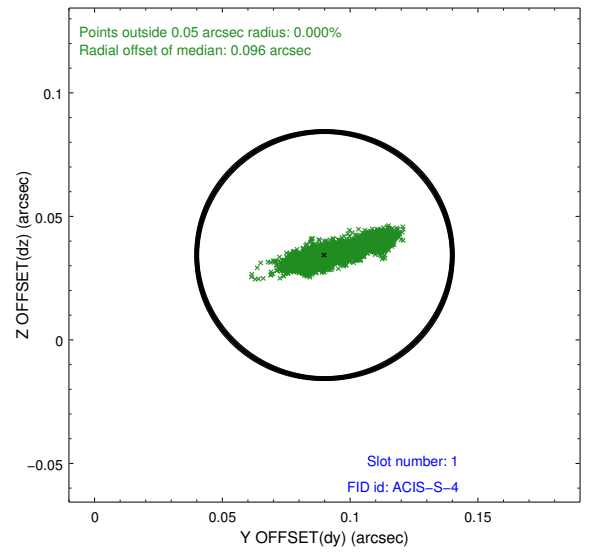
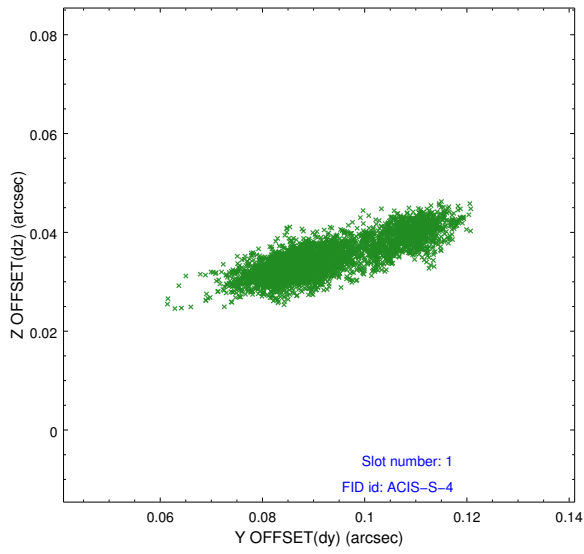


2.5 FID Slots

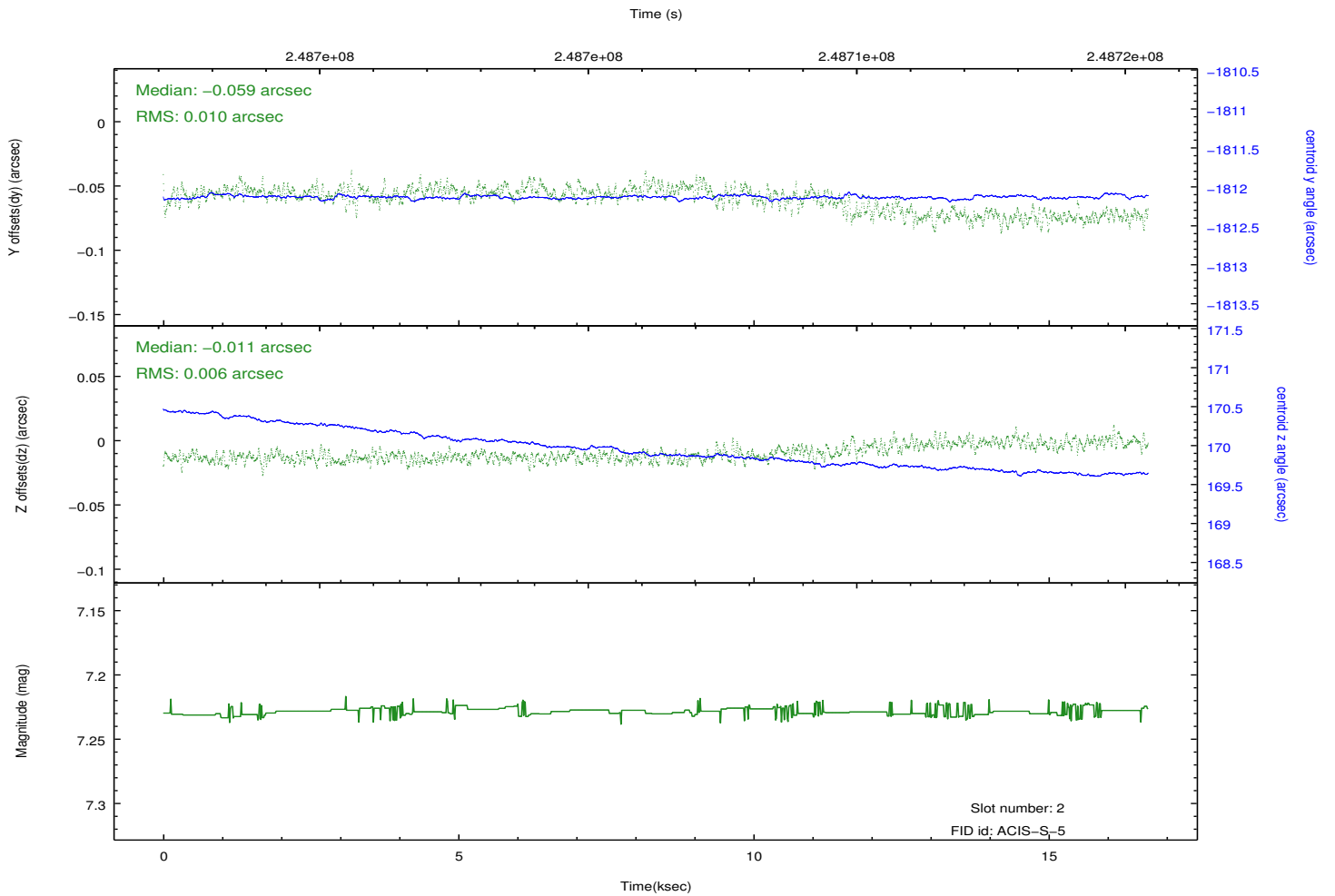
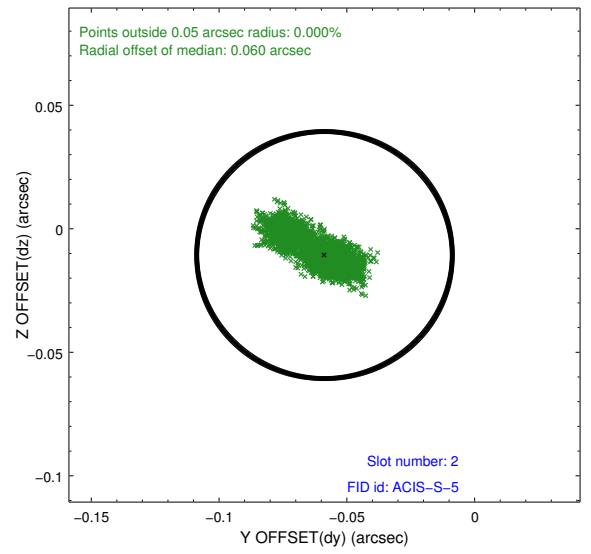
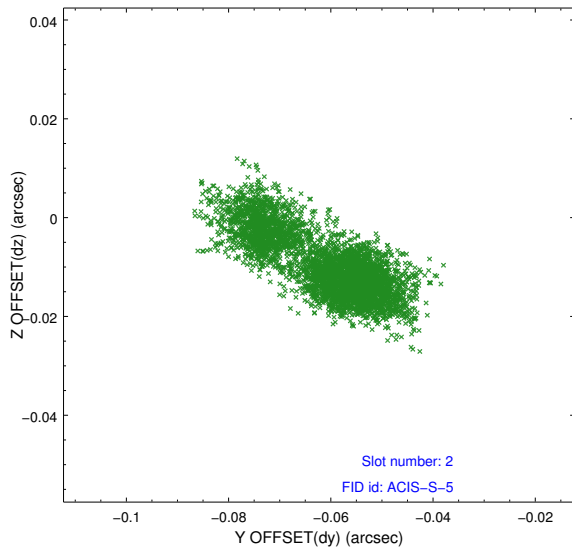
2.5.1 Slot 0



2.5.2 Slot 1



2.5.3 Slot 2



A Summary

A.1 Status

V&V Scientist	Beth Sundheim
V&V Date (YYYY-MM-DD)	2012.03.18
V&V Edition	1
V&V Disposition and Status	OK
V&V Charge Time	16.682

A.2 Comments