

# V&V Reference Report

## L2 ASCDS Version : 8.4.3

Observation 6859 - L2 Version 2  
Chandra X-Ray Center

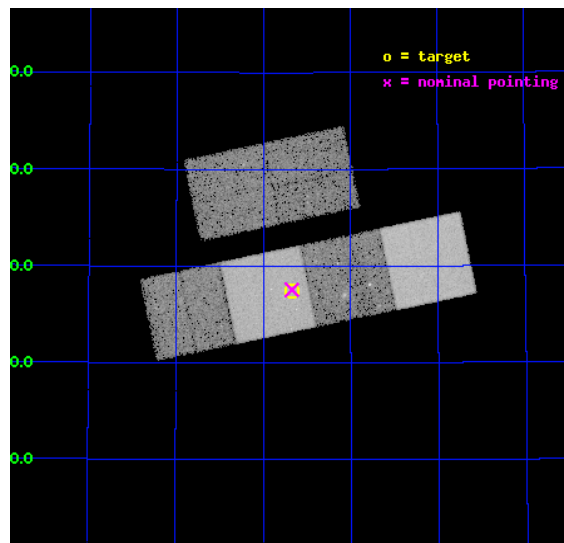
L2 Processing Date : Apr 1 2012

## Contents

<b>1</b>	<b>Front</b>	<b>2</b>
<b>2</b>	<b>OBI</b>	<b>3</b>
2.1	OBI . . . . .	3
2.1.1	Images . . . . .	3
2.1.2	Bias . . . . .	3
2.1.3	Parameters . . . . .	4
2.1.4	Events . . . . .	4
2.2	Compared Parameters . . . . .	5
2.3	Aspect . . . . .	6
2.4	Star Slots . . . . .	9
2.4.1	Slot 3 . . . . .	9
2.4.2	Slot 4 . . . . .	10
2.4.3	Slot 5 . . . . .	11
2.4.4	Slot 6 . . . . .	12
2.4.5	Slot 7 . . . . .	13
2.5	FID Slots . . . . .	14
2.5.1	Slot 0 . . . . .	14
2.5.2	Slot 1 . . . . .	15
2.5.3	Slot 2 . . . . .	16
<b>A</b>	<b>Summary</b>	<b>17</b>
A.1	Status . . . . .	17
A.2	Comments . . . . .	17

# 1 Front

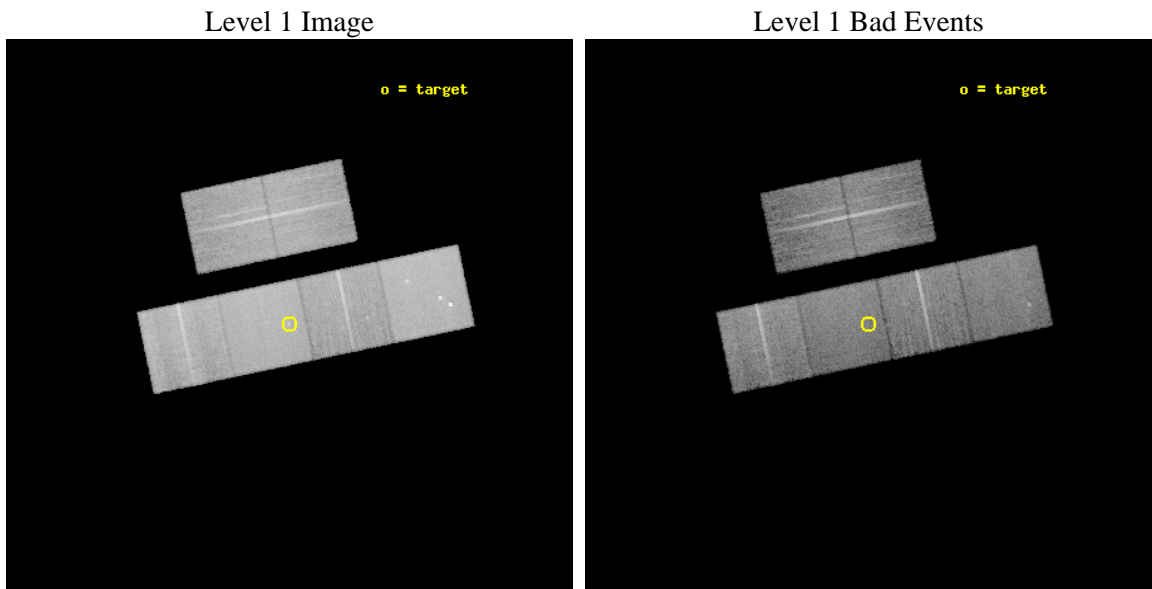
seq_num	701277	Sequence number
obs_id	6859	Observation id
title	Chandra observations of (U)LIRGs with double nuclei: search for binary AGN and X-ray luminous starbursts	Proposal title
observer	Dr. Stefanie Komossa	Principal investigator
object	NGC 6090	Source name
dtcycle	0	&#160
cycle	P	events from which exps? Prim/Second/Both
ra_targ	242.92	Observer's specified target RA [deg]
dec_targ	52.4575	Observer's specified target Dec [deg]
ra_nom	242.91856493434	Nominal RA [deg]
dec_nom	52.459378070106	Nominal Dec [deg]
roll_nom	168.17086517005	Nominal Roll [deg]
revision	2	Processing version of data
ontime	14981.360508829	Sum of GTIs [s]
livetime	14791.657501374	Livetime [s]
ontime2	14974.919617981	Sum of GTIs [s]
ontime3	14981.237388819	Sum of GTIs [s]
ontime5	14981.319468826	Sum of GTIs [s]
ontime6	14981.278428823	Sum of GTIs [s]
ontime7	14981.360508829	Sum of GTIs [s]
ontime8	14981.196348846	Sum of GTIs [s]
l2events	215561	Number of level 2 events



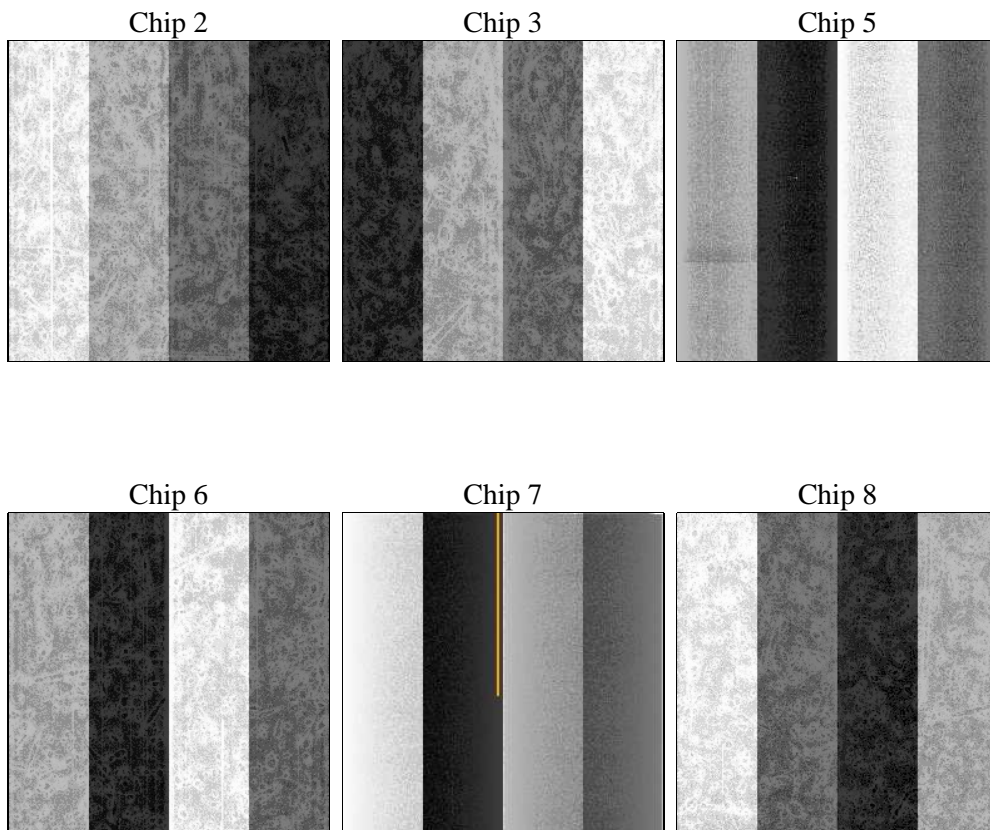
## 2 OBI

### 2.1 OBI

#### 2.1.1 Images



#### 2.1.2 Bias



### 2.1.3 Parameters

obi_num	0	Obi number	sched_exp_time	15000.000000	[s] Scheduled observation exposure time
ascdsver	8.4.3	Processing system revision	ontime	14981.360508829	Sum of GTIs [s]
caldsver	4.4.9	&#160	ontime2	14974.919617981	Sum of GTIs [s]
date	2012-04-01T05:04:27	Date and time of file creation	ontime3	14981.237388819	Sum of GTIs [s]
revision	2	Processing version of data	ontime5	14981.319468826	Sum of GTIs [s]
			ontime6	14981.278428823	Sum of GTIs [s]
			ontime7	14981.360508829	Sum of GTIs [s]
			ontime8	14981.196348846	Sum of GTIs [s]
			l1events	942135	Number of level 1 events

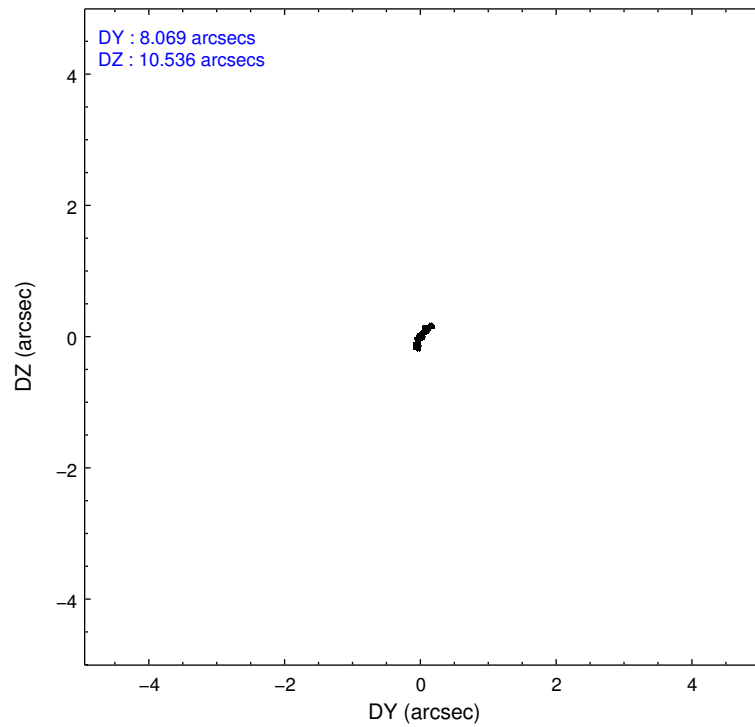
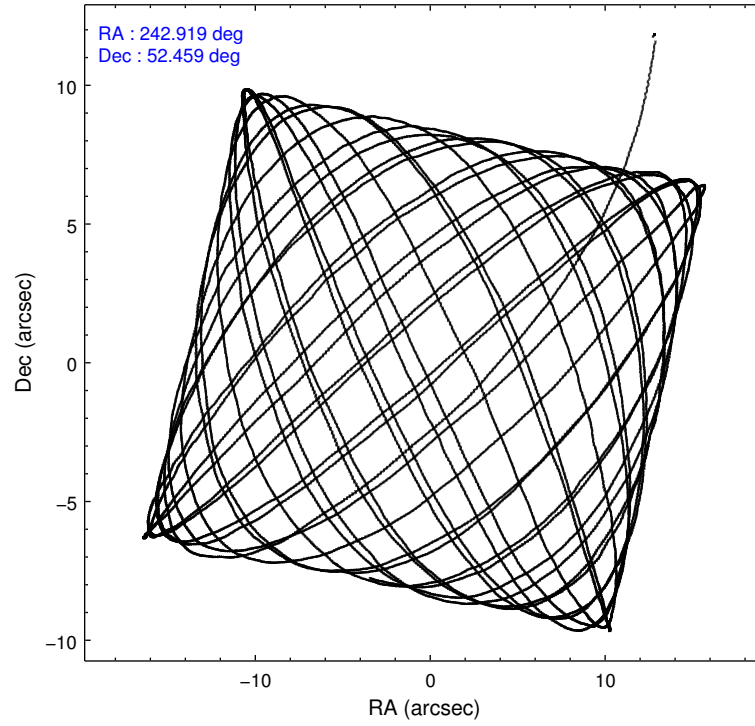
### 2.1.4 Events

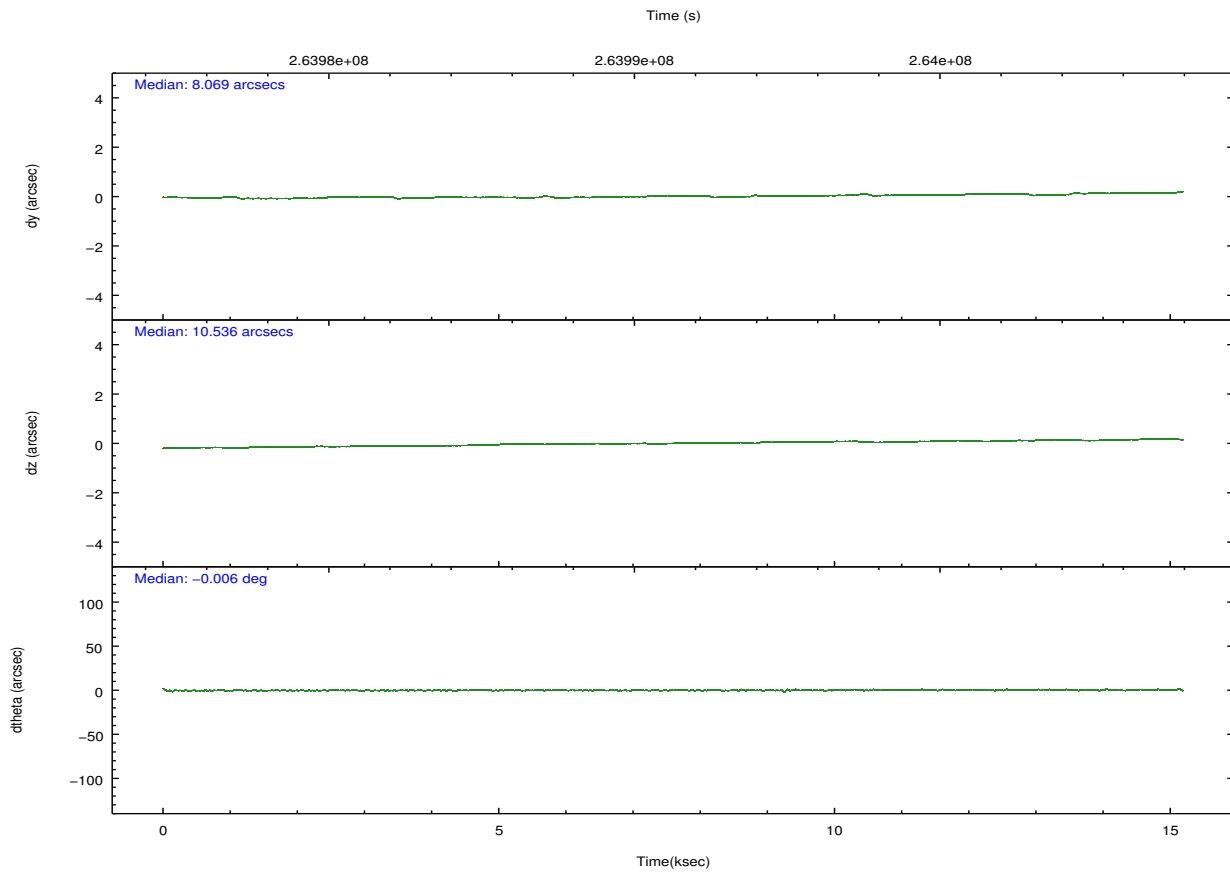
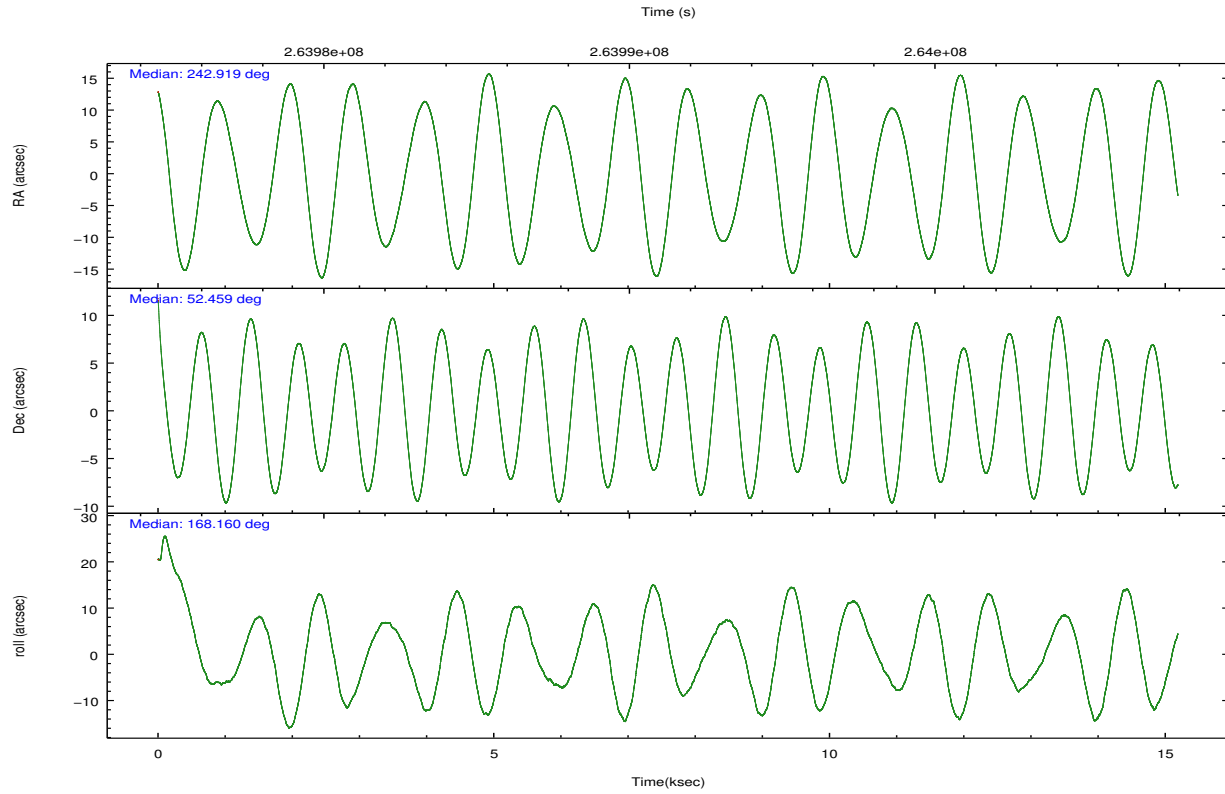
	ccd 2	ccd 3	ccd 5	ccd 6	ccd 7	ccd 8		ccd 2	ccd 3	ccd 5	ccd 6	ccd 7	ccd 8
level 1 events	135545	125980	199901	134364	179958	166387	grade 0 events	6814	6711	10058	7184	6526	11104
rejected events	120069	110658	107650	117525	105199	130627		5%	5%	5%	5%	3%	6%
rejected %	88%	87%	53%	87%	58%	78%	grade 1 events	95	78	655	69	186	119
								0%	0%	0%	0%	0%	0%
							grade 2 events	3260	3022	27264	3431	15034	8051
								2%	2%	13%	2%	8%	4%
							grade 3 events	1513	1514	3432	1513	6475	3743
								1%	1%	1%	1%	3%	2%
							grade 4 events	1405	1419	3342	1464	6482	3454
								1%	1%	1%	1%	3%	2%
							grade 5 events	5189	5934	14344	6073	16757	7920
								3%	4%	7%	4%	9%	4%
							grade 6 events	2488	2665	48191	3250	40277	9427
								1%	2%	24%	2%	22%	5%
							grade 7 events	114781	104637	92615	111380	88221	122569
								84%	83%	46%	82%	49%	73%

## 2.2 Compared Parameters

Parameter	Planned	Actual	Parameter	Planned	Actual
Instrument	ACIS	ACIS	Obspar format version number	7	7
Detector	ACIS-235678	ACIS-235678	Obspar file type	PREDICTED	ACTUAL
Grating	NONE	NONE	Obspar update status	NONE	UPDATED
Data mode	FAINT	FAINT	Number of optional ACIS chips dropped	0	0
Observation mode	POINTING	POINTING	On-chip summing requested	N	N
[deg] Pointing RA	242.960844	242.9185649343356	Subarray requested	NONE	NONE
[deg] Pointing Dec	52.468221	52.45937807010557	Alternating exposures requested	N	N
[deg] Pointing Roll	167.980715	168.1708651700516	[s] Primary exposure time	0.000000	3.2
[mm] SIM focus pos	-0.684267	-0.6828225247311905			
[mm] SIM defocus	0	0.001444936568705701			
[mm] SIM translation stage pos	-190.132523	-190.1400660498719			
[mm] SIM translation stage offset	0	0.00754346686406393			
[s] Observation start time (MET)	263983229.184000	263982254.33916			
Observation start date	2006-05-14T08:39:24	2006-05-14T08:24:14			
[s] Observation end time (MET)	263998229.184000	263998863.95243			
Observation end date	2006-05-14T12:49:24	2006-05-14T13:01:03			
Read mode	TIMED	TIMED			

## 2.3 Aspect



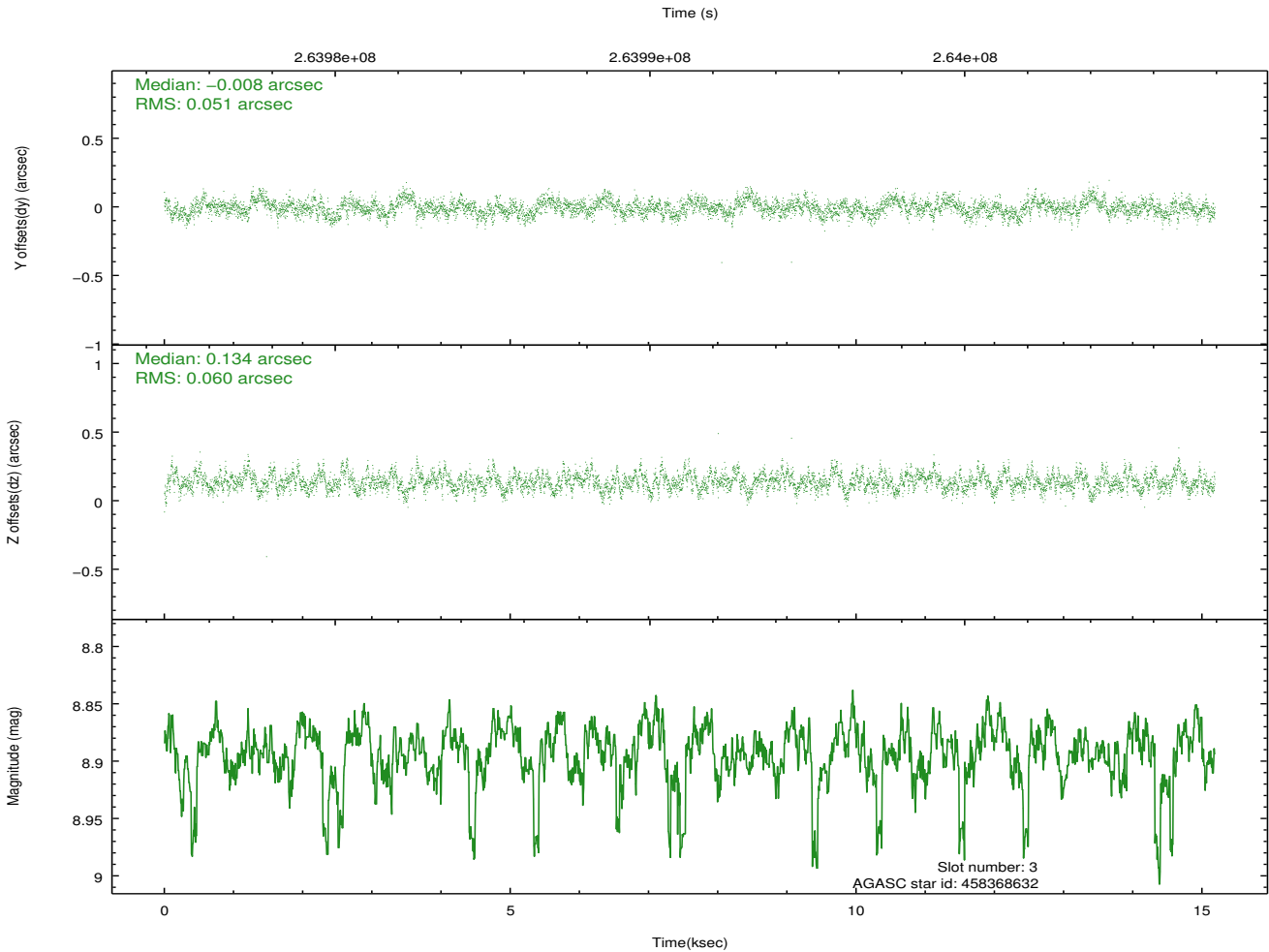
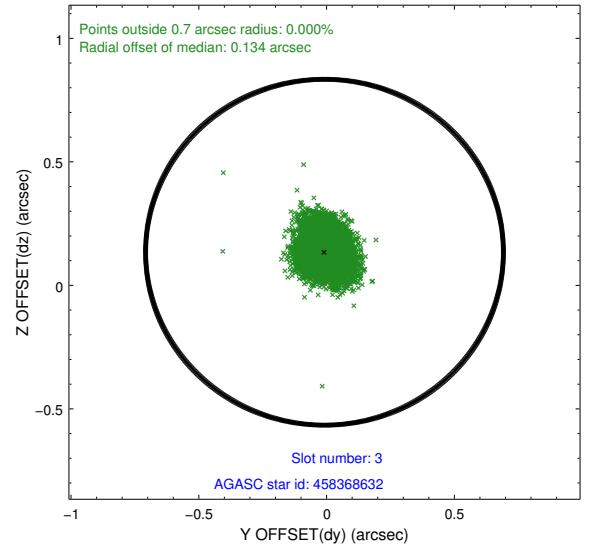
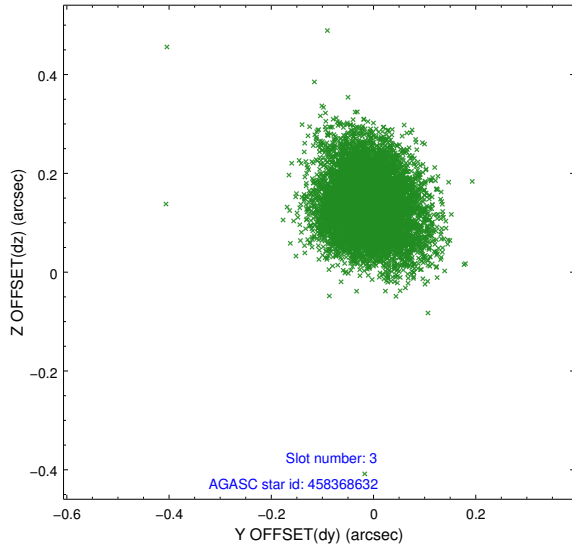


### Slot Statistics

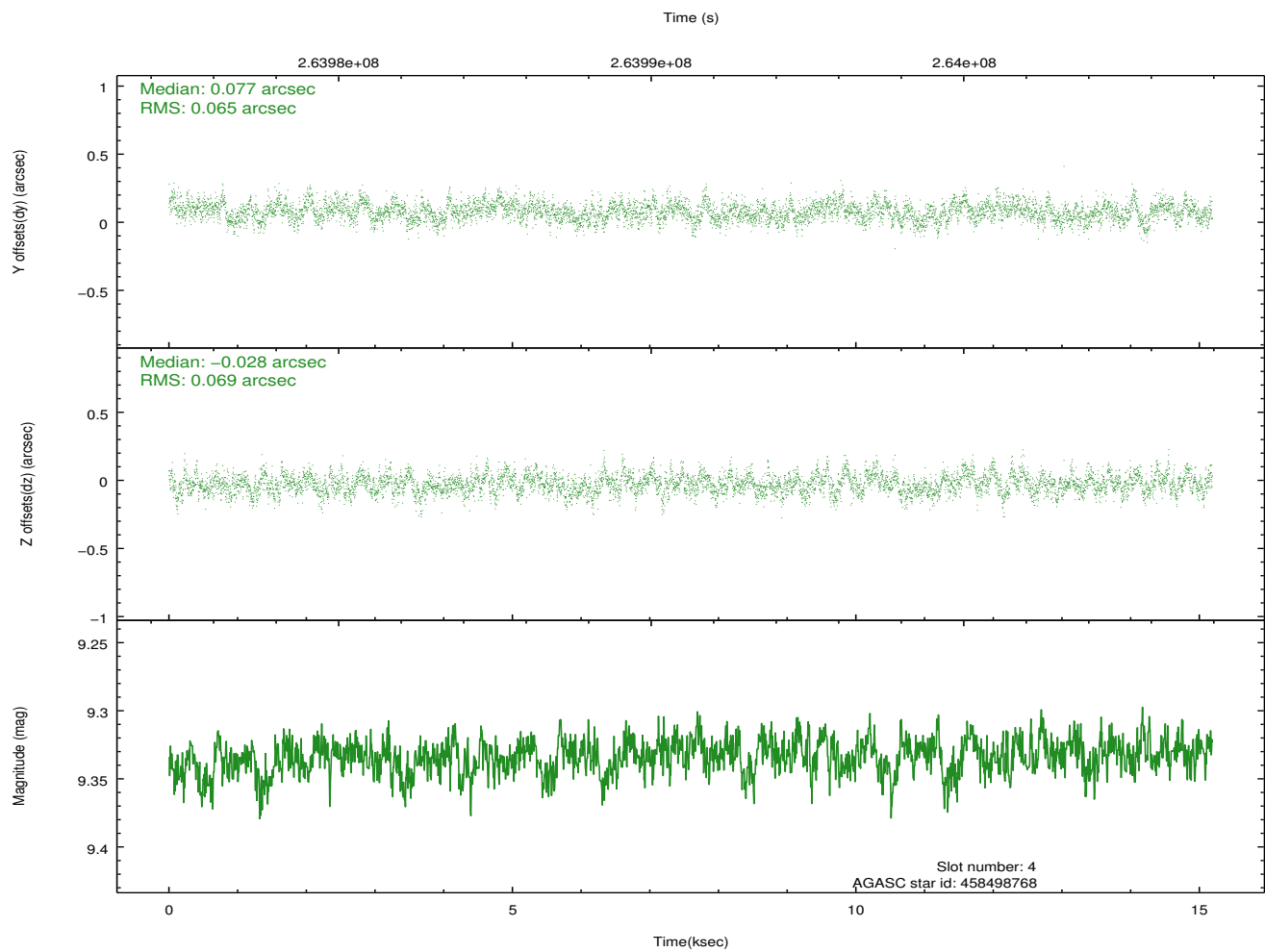
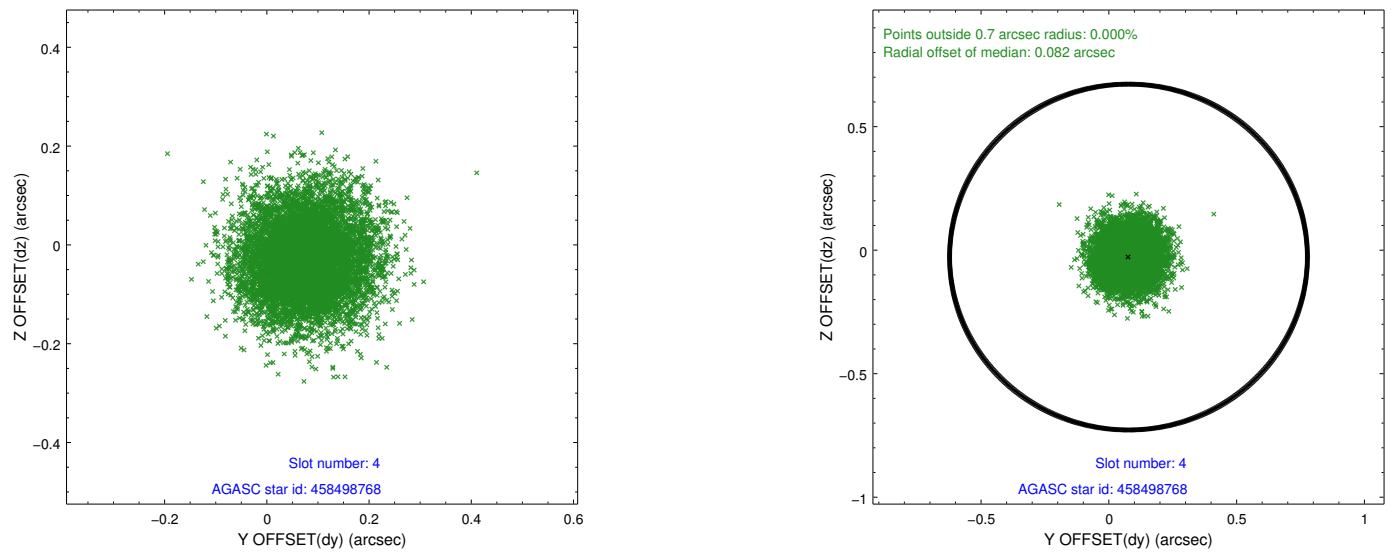
slot	status	id	mag	n_pts	med_dy	med_dz	dr1	dr2	ra	dec	mean_y	mean_z
0	FID	ACIS-S-2	7.11	3705	-0.049	-0.028	0.006	0.010	0.000000	0.000000	-760.87	-1731.84
1	FID	ACIS-S-4	7.21	3705	0.142	0.031	0.007	0.012	0.000000	0.000000	2152.42	176.47
2	FID	ACIS-S-5	7.24	3704	-0.124	0.005	0.008	0.013	0.000000	0.000000	-1813.45	170.35
3	GUIDE	458368632	8.89	7367	-0.008	0.134	0.083	0.136	242.689212	52.137071	339.01	1290.42
4	GUIDE	458498768	9.33	7406	0.077	-0.028	0.102	0.165	243.816198	52.030087	-2178.64	1137.03
5	GUIDE	508175600	7.53	7407	-0.049	-0.011	0.060	0.097	242.339515	52.904973	1648.46	-1261.90
6	GUIDE	508176608	8.89	7397	-0.043	0.055	0.077	0.124	242.936972	52.833883	325.86	-1276.68
7	GUIDE	458366664	9.35	7404	0.024	-0.151	0.108	0.170	243.148630	51.763569	-937.04	2393.28

## 2.4 Star Slots

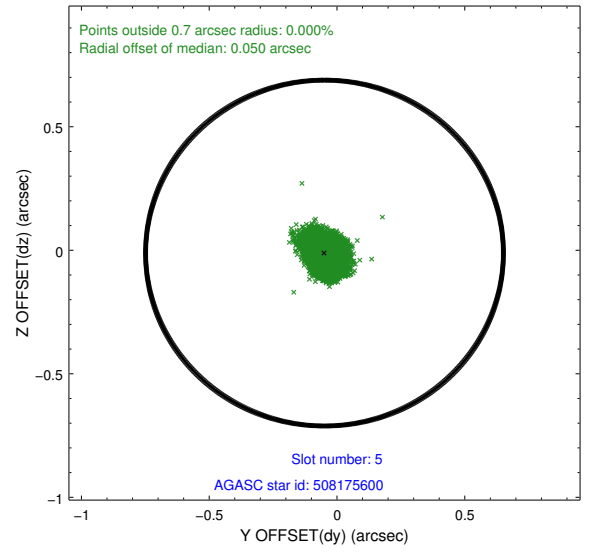
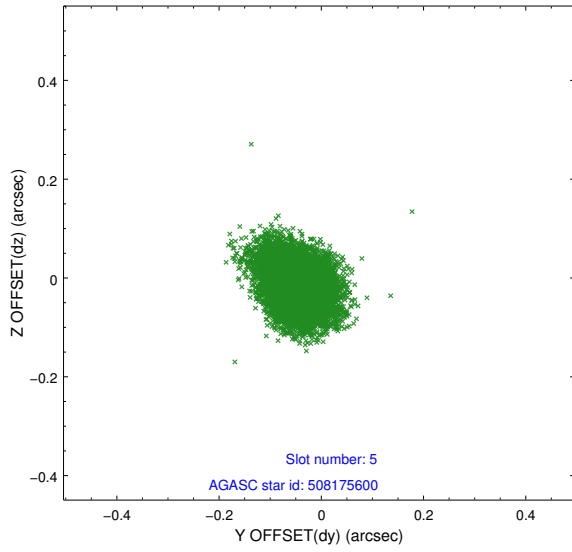
### 2.4.1 Slot 3



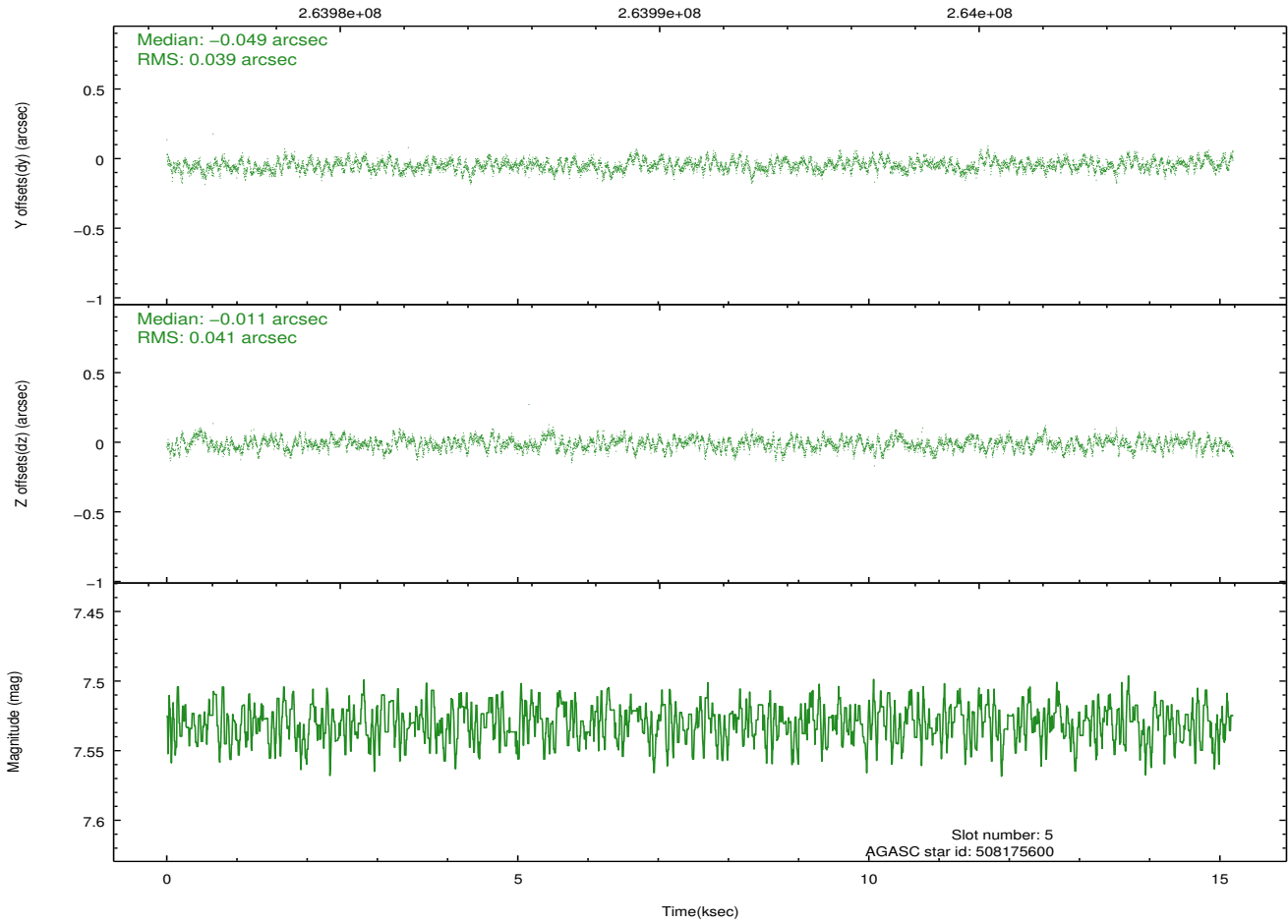
## 2.4.2 Slot 4



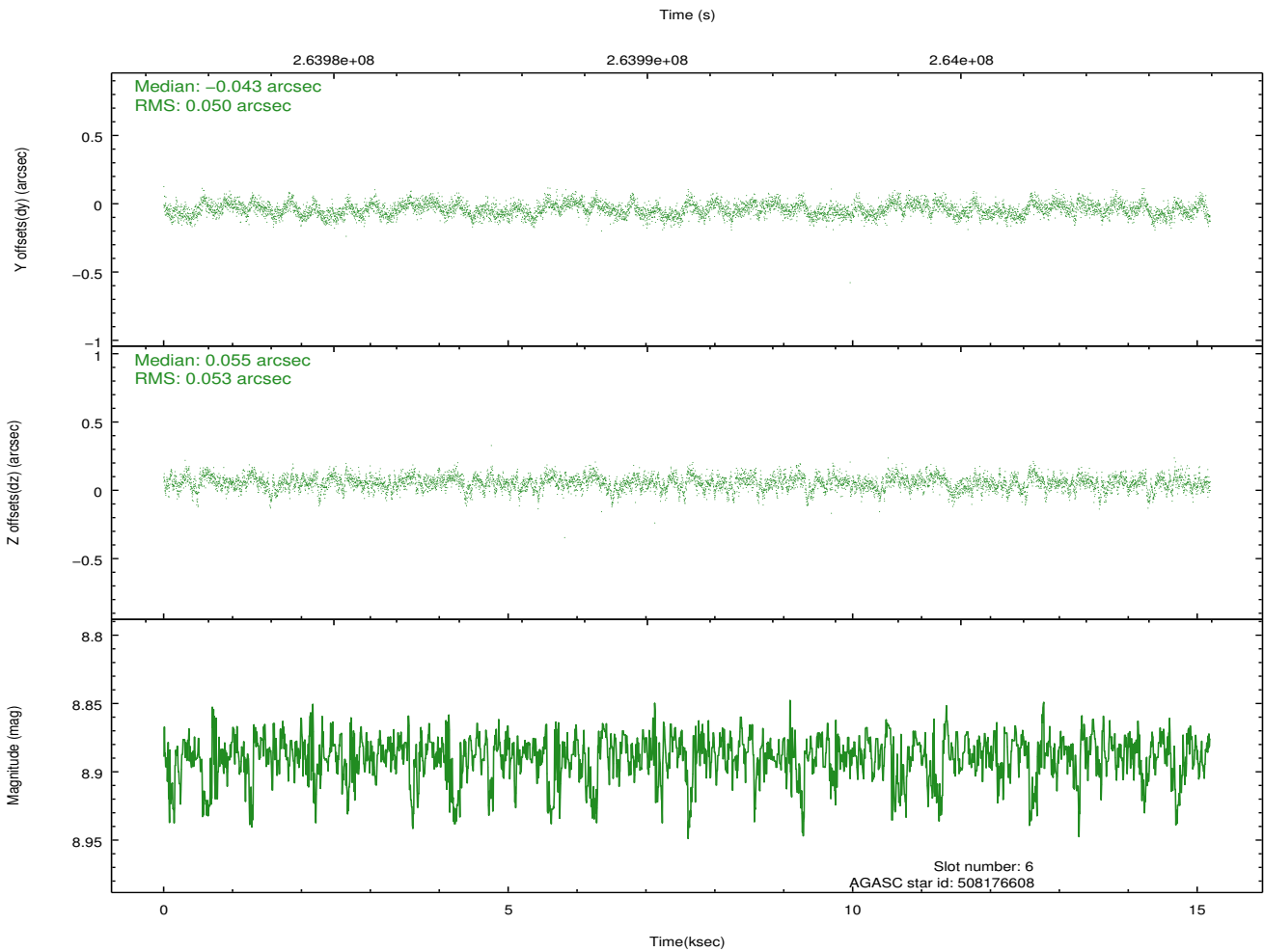
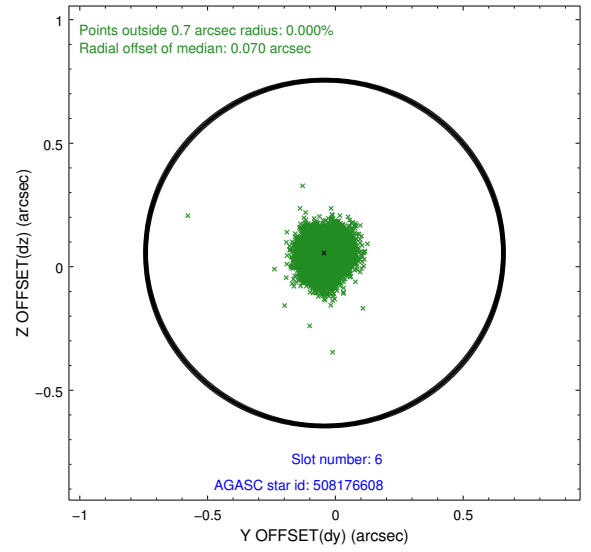
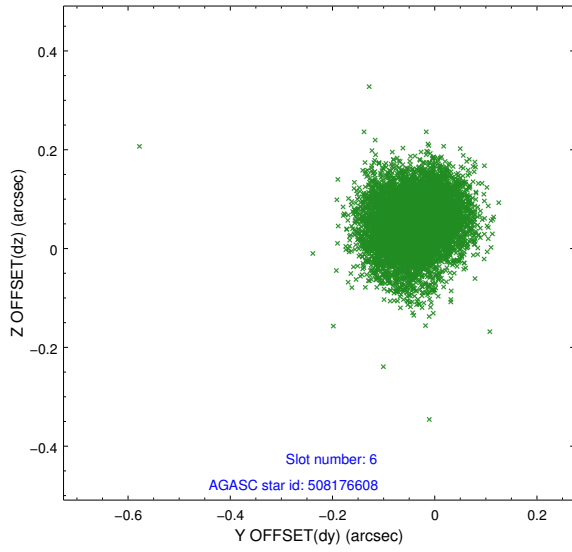
### 2.4.3 Slot 5



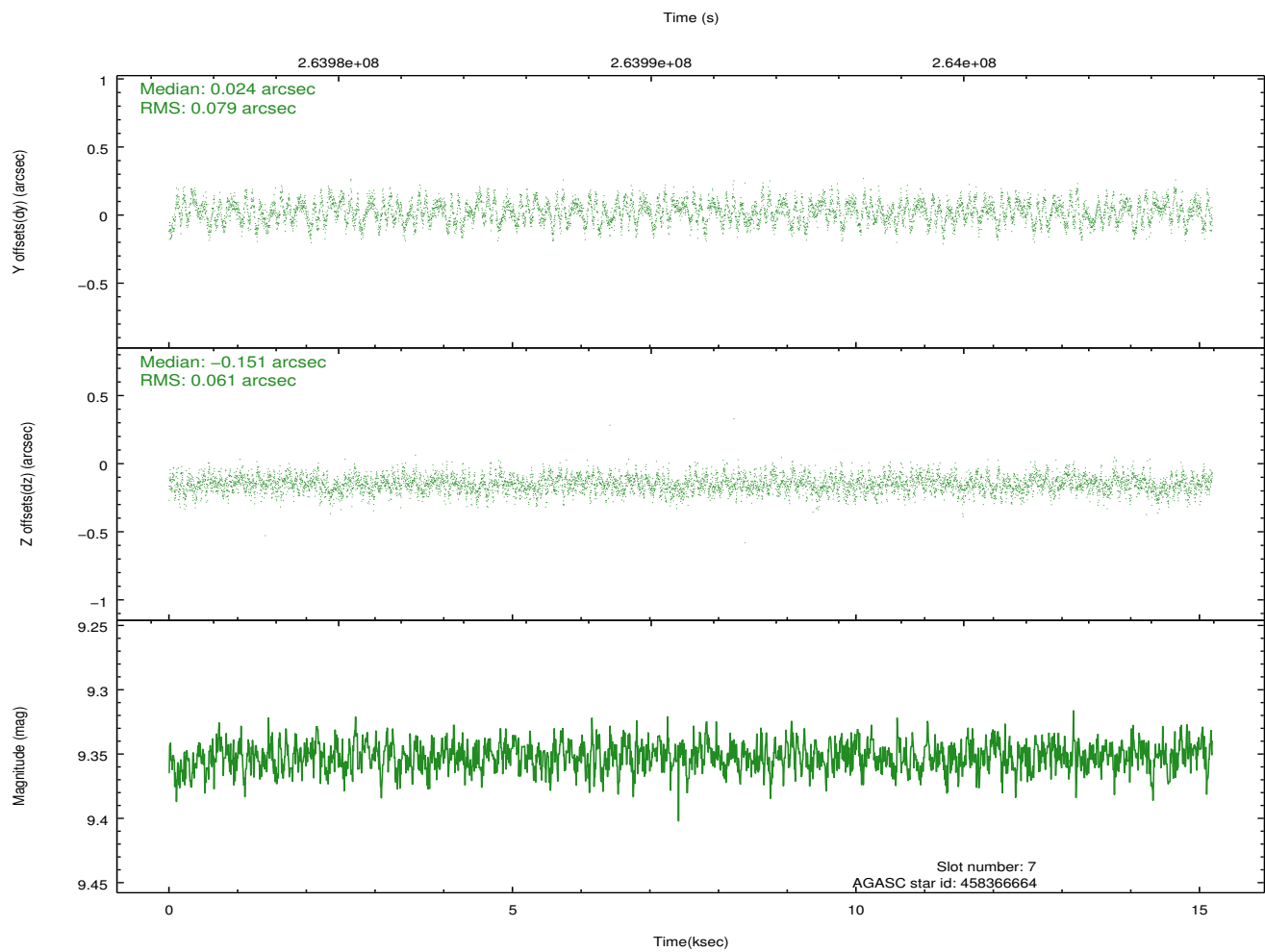
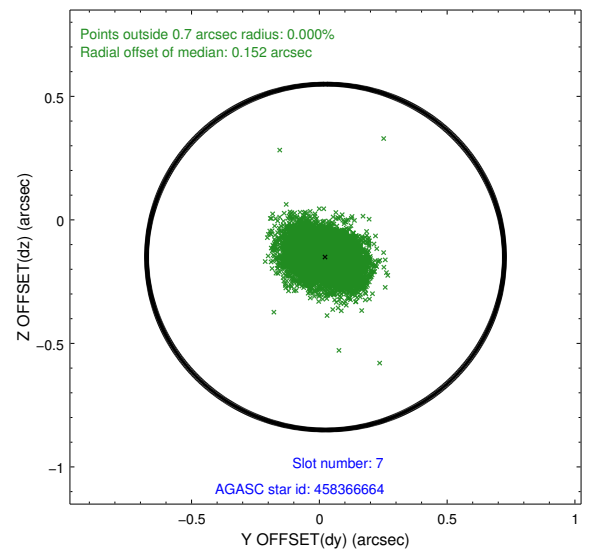
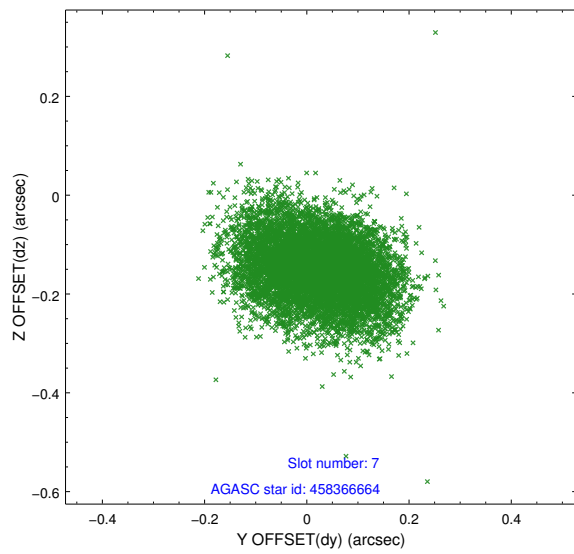
Time (s)



## 2.4.4 Slot 6

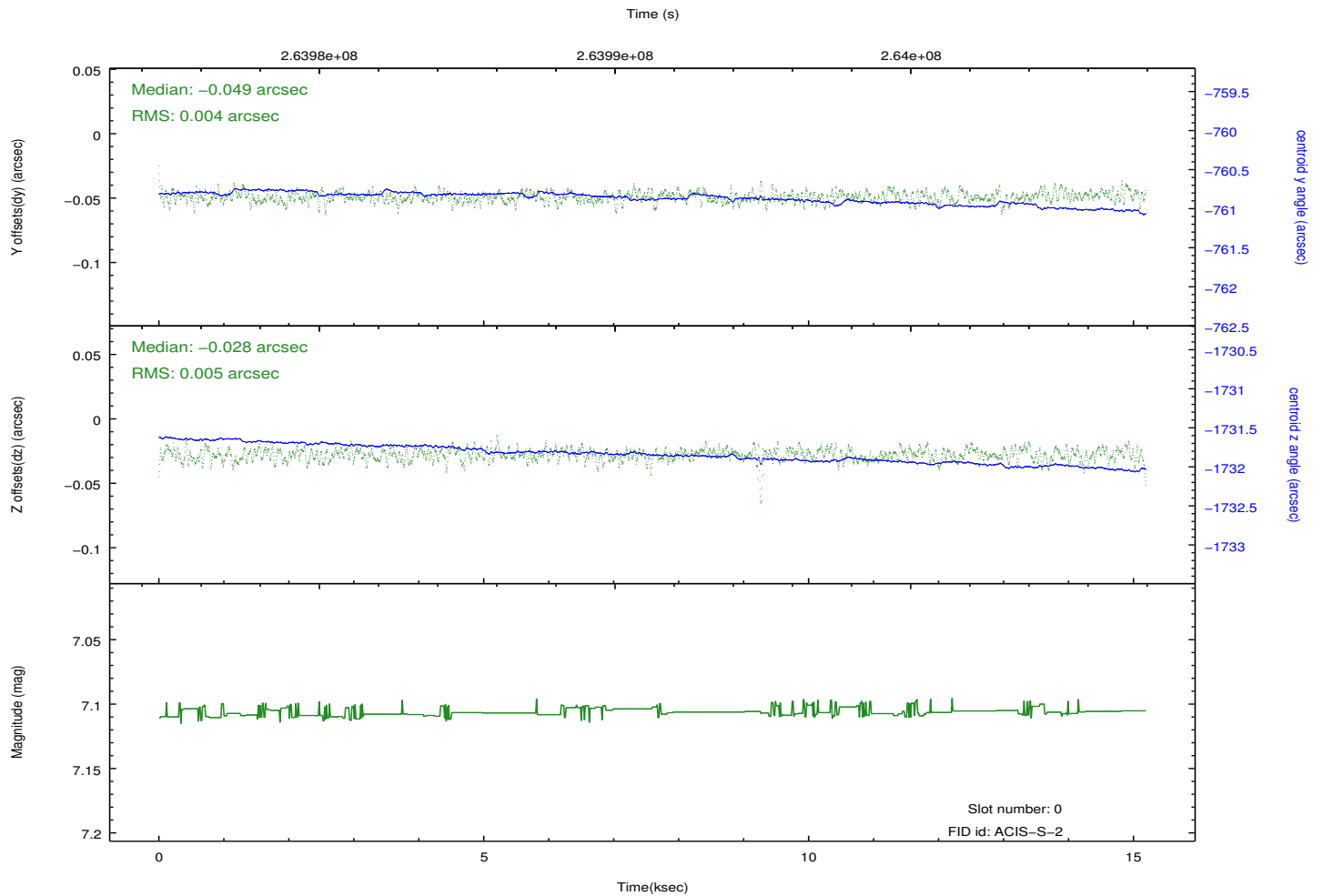
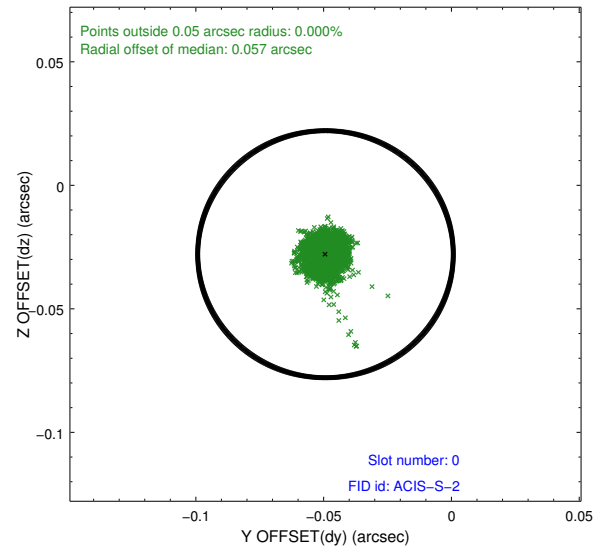
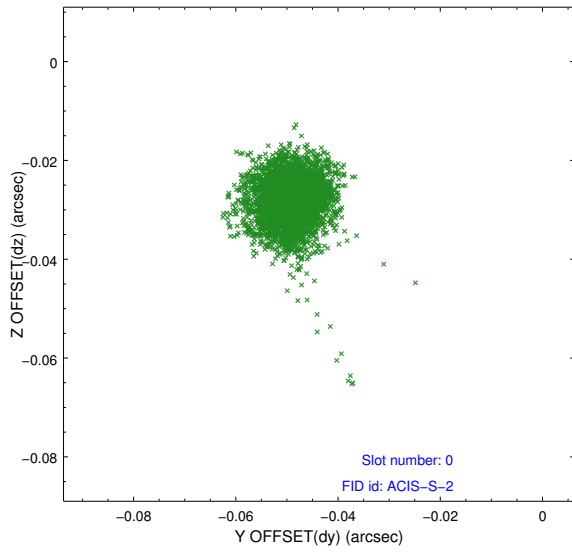


## 2.4.5 Slot 7

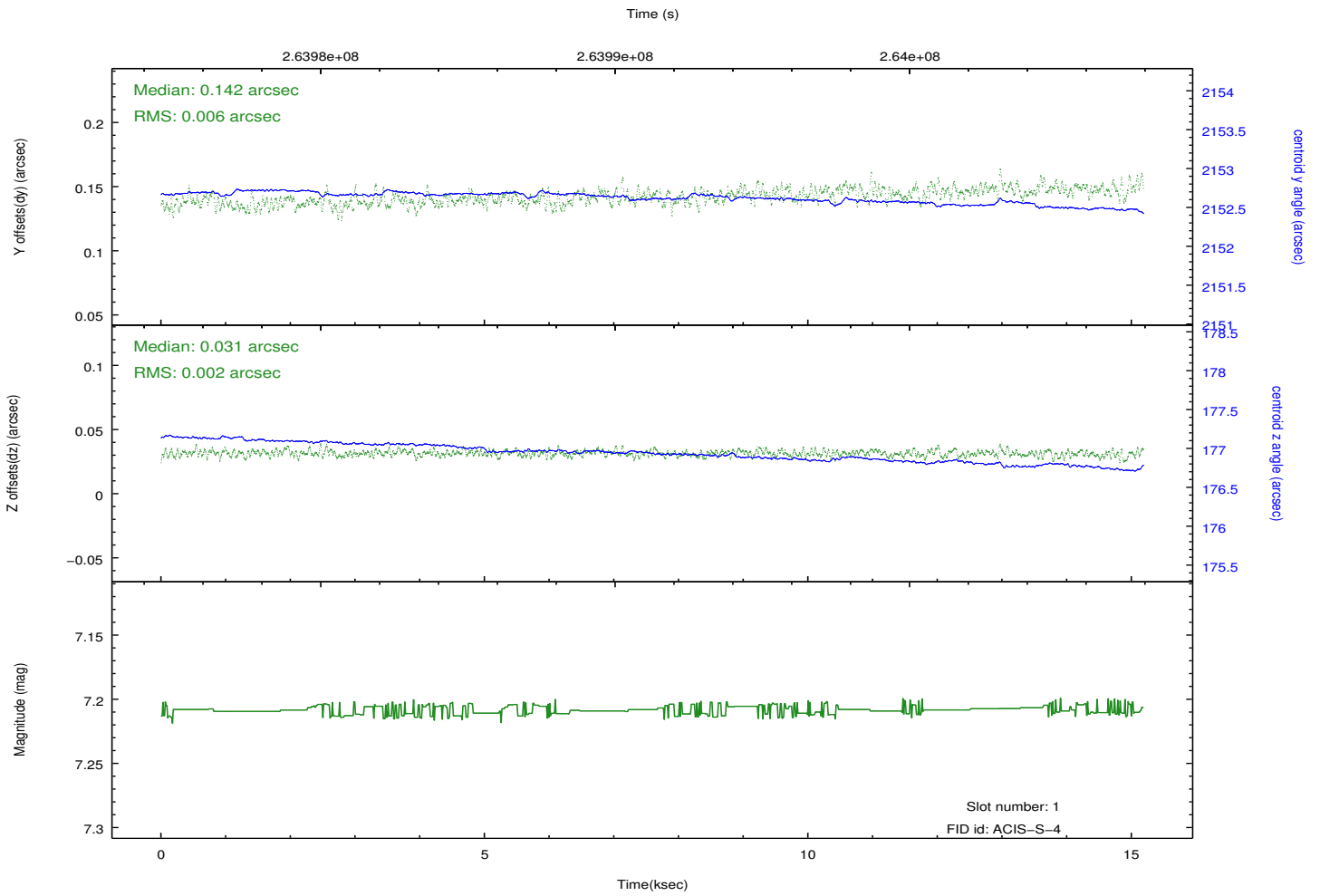
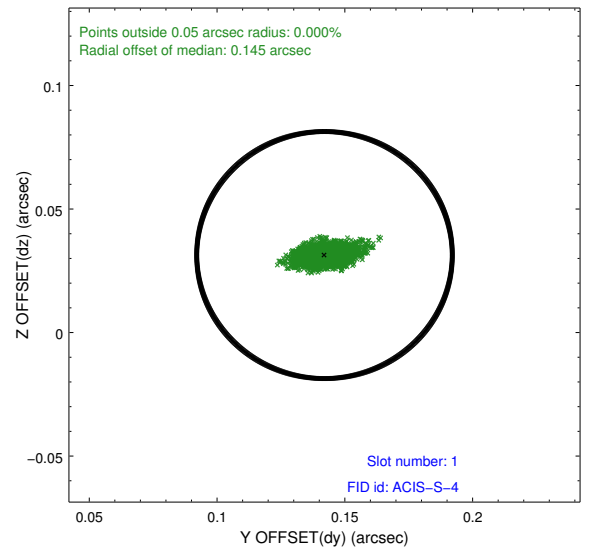
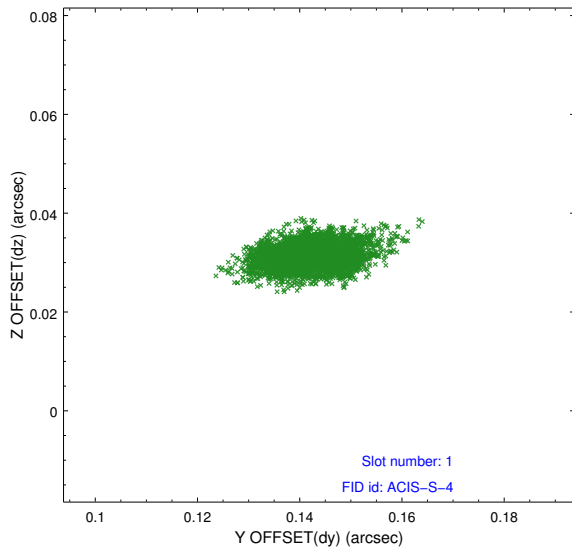


## 2.5 FID Slots

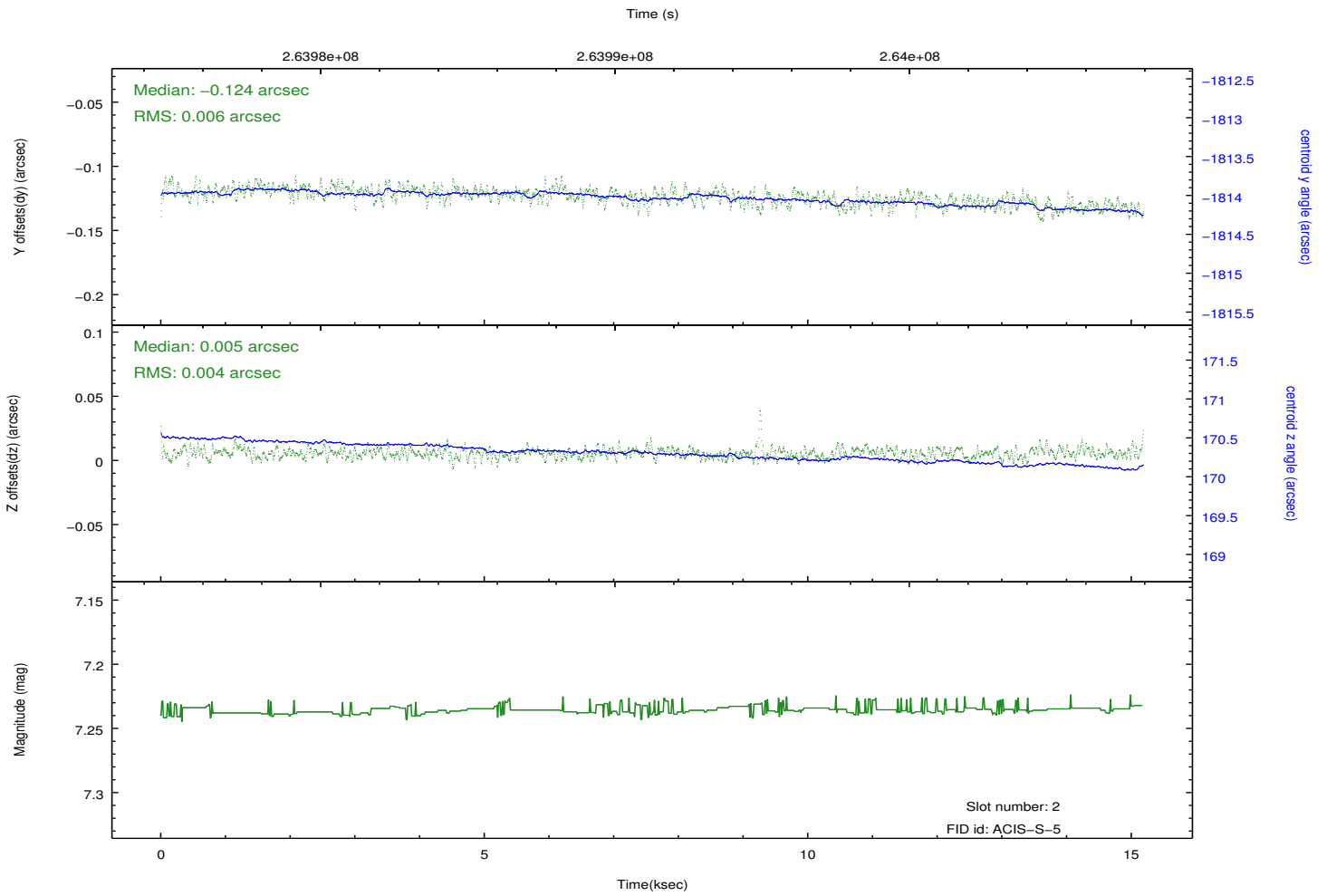
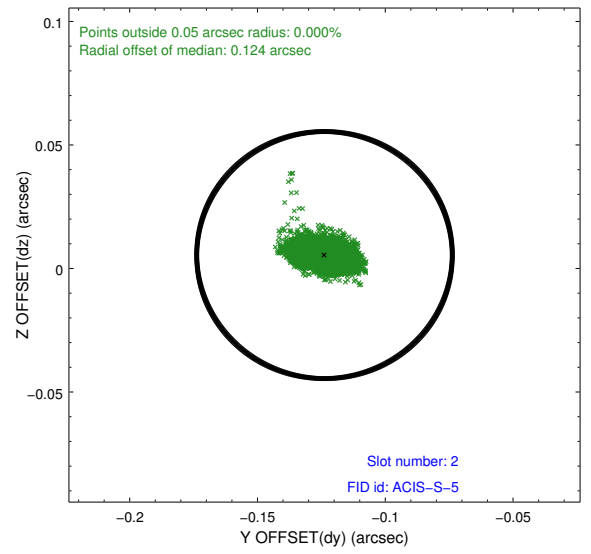
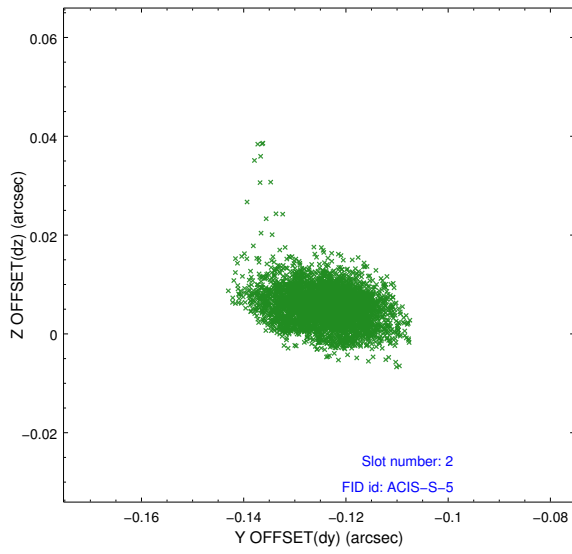
### 2.5.1 Slot 0



## 2.5.2 Slot 1



### 2.5.3 Slot 2



# A Summary

## A.1 Status

V&V Scientist	Jen Lauer
V&V Date (YYYY-MM-DD)	2012.04.03
V&V Edition	1
V&V Disposition and Status	OK
V&V Charge Time	14.9823999

## A.2 Comments