

V&V Reference Report

L2 ASCDS Version : 8.4.3.1

Observation 7019 - L2 Version 2
Chandra X-Ray Center

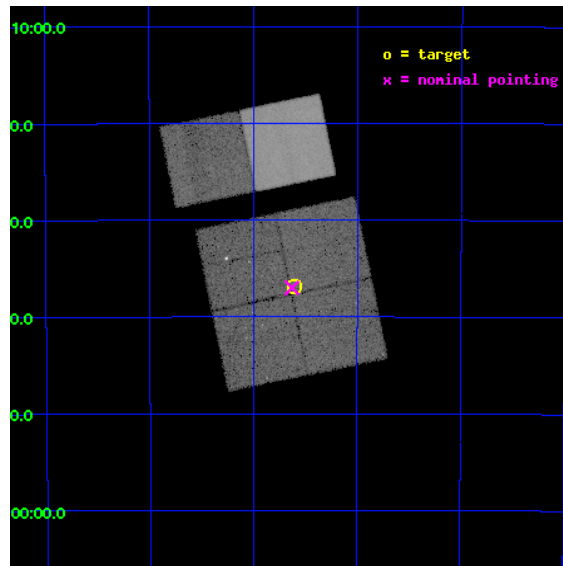
L2 Processing Date : Apr 11 2012

Contents

1	Front	2
2	OBI	3
2.1	OBI	3
2.1.1	Images	3
2.1.2	Bias	3
2.1.3	Parameters	4
2.1.4	Events	4
2.2	Compared Parameters	5
2.3	Aspect	6
2.4	Star Slots	9
2.4.1	Slot 3	9
2.4.2	Slot 4	10
2.4.3	Slot 5	11
2.4.4	Slot 6	12
2.4.5	Slot 7	13
2.5	FID Slots	14
2.5.1	Slot 0	14
2.5.2	Slot 1	15
2.5.3	Slot 2	16
A	Summary	17
A.1	Status	17
A.2	Comments	17

1 Front

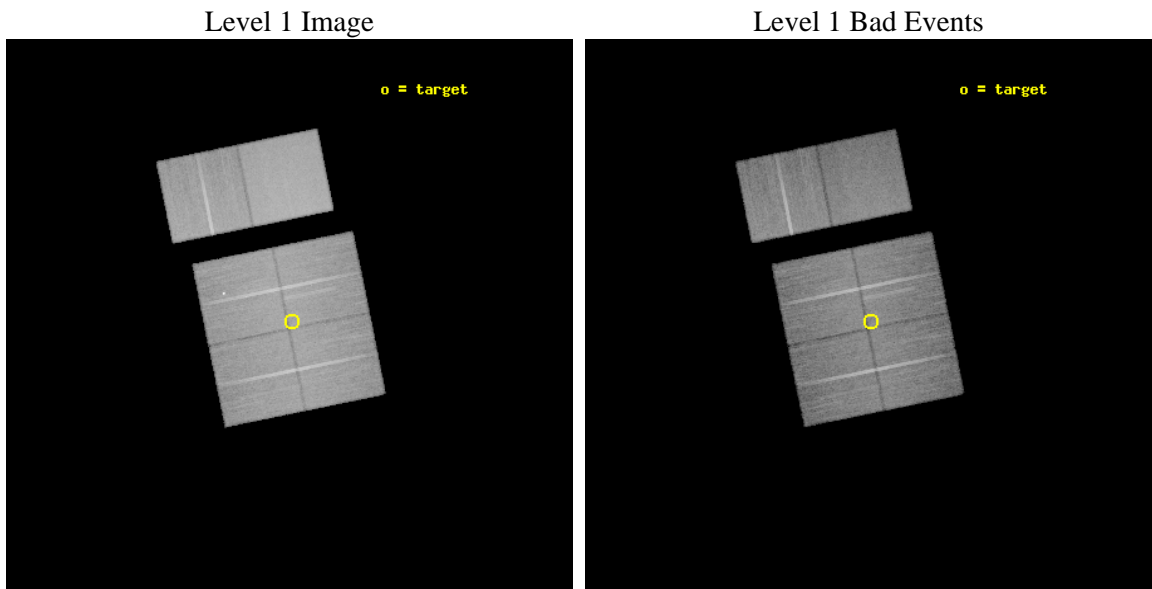
seq_num	900435	Sequence number
obs_id	7019	Observation id
title	The dark side of accretion: chasing type 2 QSOs	Proposal title
observer	Dr Fabrizio Fiore	Principal investigator
object	ELAIS-S1 D	Source name
dtycycle	0	
cycle	P	events from which exps? Prim/Second/Both
ra_targ	8.652083	Observer's specified target RA [deg]
dec_targ	-43.614167	Observer's specified target Dec [deg]
ra_nom	8.657358963396	Nominal RA [deg]
dec_nom	-43.616769507708	Nominal Dec [deg]
roll_nom	348.47033042639	Nominal Roll [deg]
revision	2	Processing version of data
ontime	23973.913281143	Sum of GTIs [s]
livetime	23670.341155819	Livetime [s]
ontime0	23977.031181216	Sum of GTIs [s]
ontime1	23964.10826993	Sum of GTIs [s]
ontime2	23977.113261223	Sum of GTIs [s]
ontime3	23973.913281143	Sum of GTIs [s]
ontime6	23973.995371103	Sum of GTIs [s]
ontime7	23977.195341229	Sum of GTIs [s]
l2events	239029	Number of level 2 events



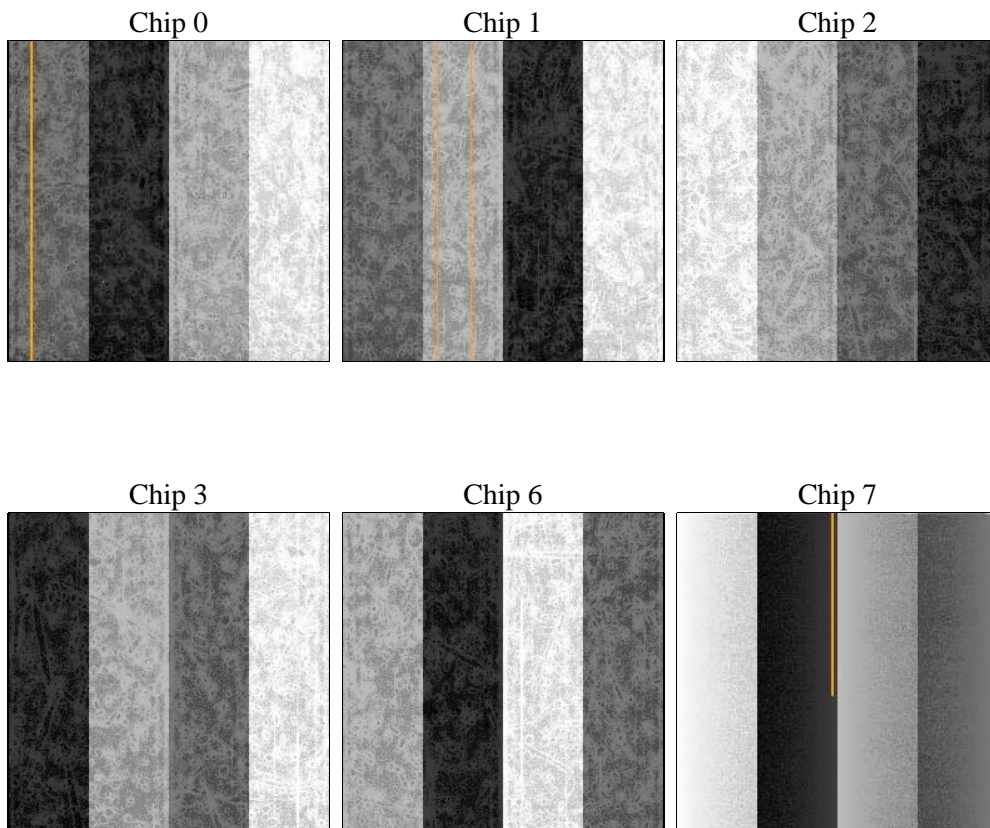
2 OBI

2.1 OBI

2.1.1 Images



2.1.2 Bias



2.1.3 Parameters

obi_num	0	Obi number	sched_exp_time	24026.113000	[s] Scheduled observation exposure time
ascdsver	8.4.3.1	Processing system revision	ontime	23973.913281143	Sum of GTIs [s]
caldbver	4.4.9	 	ontime0	23977.031181216	Sum of GTIs [s]
date	2012-04-11T15:22:51	Date and time of file creation	ontime1	23964.10826993	Sum of GTIs [s]
revision	2	Processing version of data	ontime2	23977.113261223	Sum of GTIs [s]
			ontime3	23973.913281143	Sum of GTIs [s]
			ontime6	23973.995371103	Sum of GTIs [s]
			ontime7	23977.195341229	Sum of GTIs [s]
			l1events	1390853	Number of level 1 events

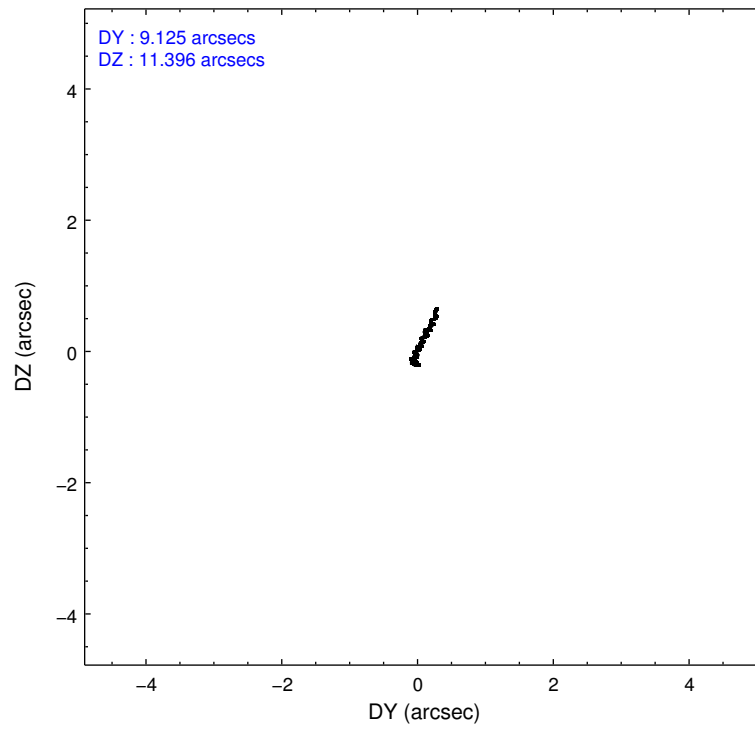
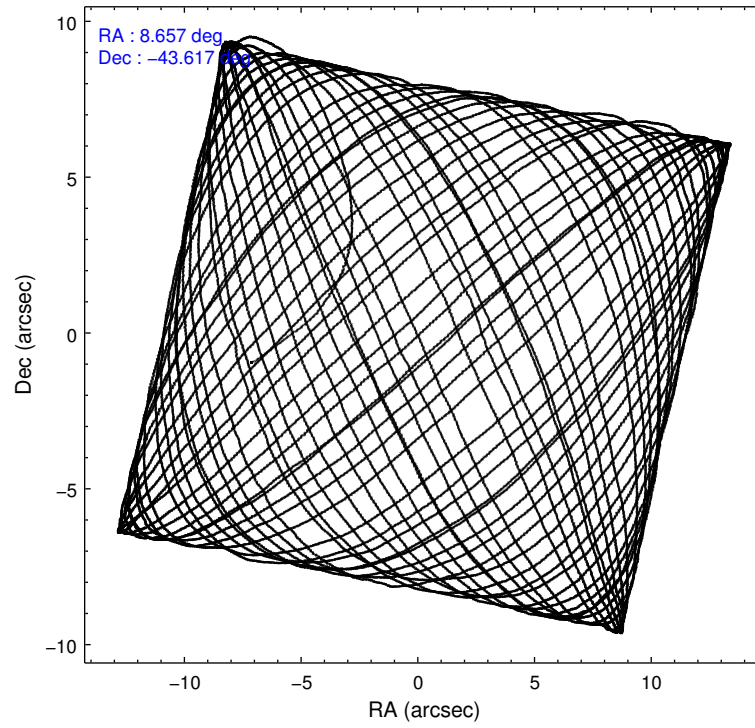
2.1.4 Events

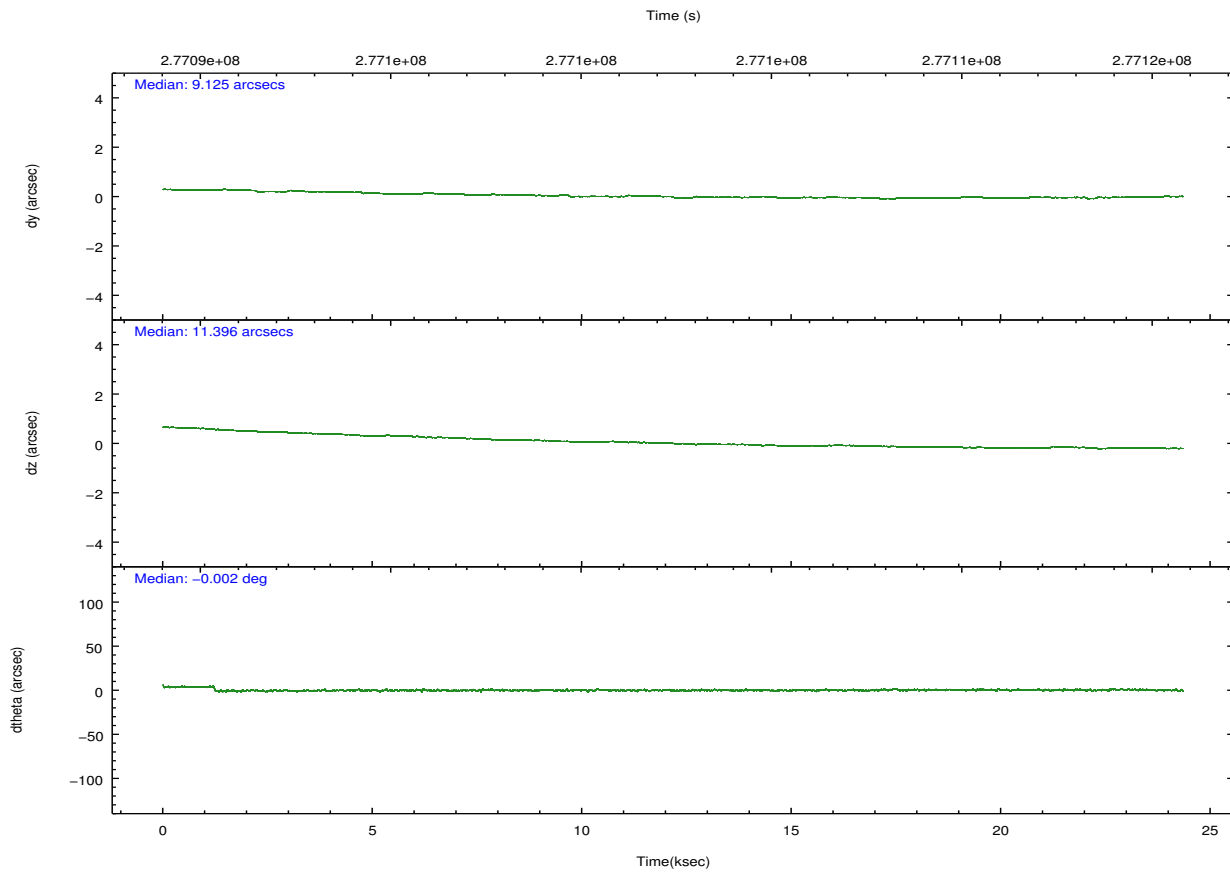
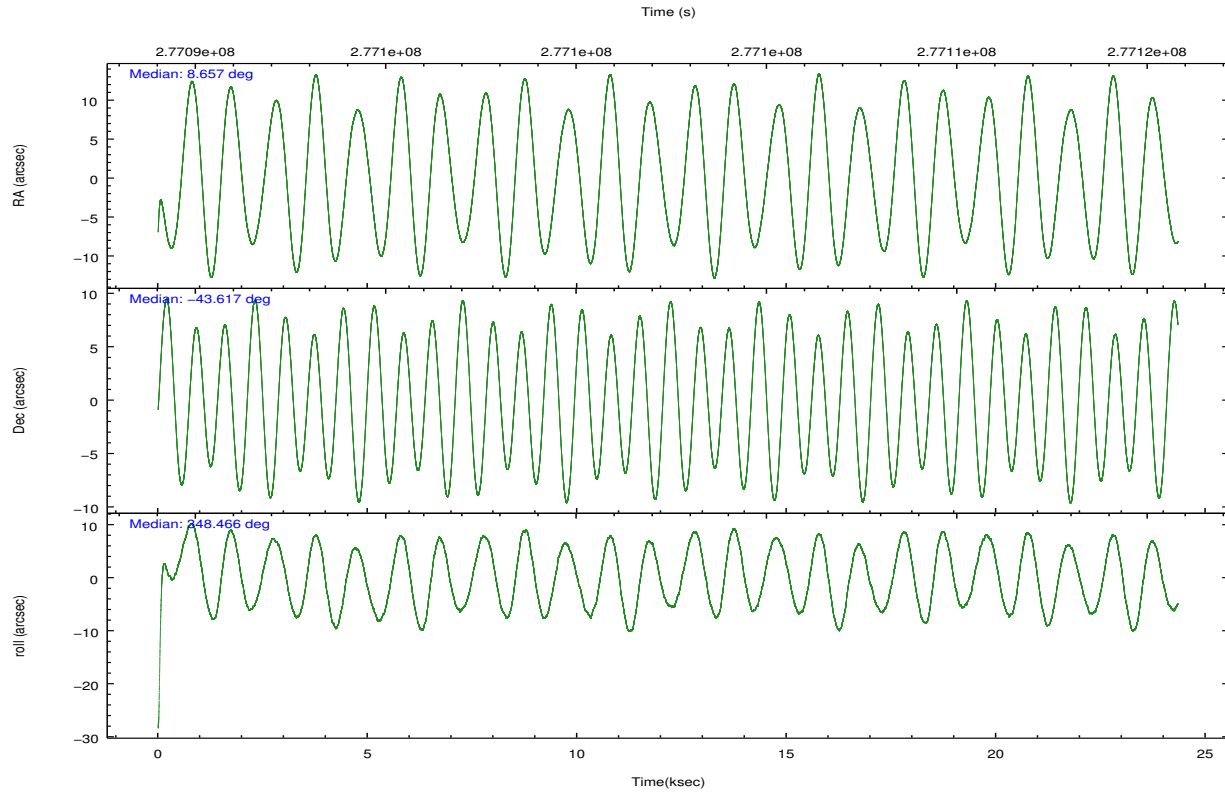
	ccd 0	ccd 1	ccd 2	ccd 3	ccd 6	ccd 7		ccd 0	ccd 1	ccd 2	ccd 3	ccd 6	ccd 7
level 1 events	201895	205313	227873	220038	233445	302289	grade 0 events	11519	10748	13408	11126	10321	11061
rejected events	175322	177909	199641	194422	206813	176383		5%	5%	5%	5%	4%	3%
rejected %	86%	86%	87%	88%	88%	58%	grade 1 events	120	114	164	136	116	300
								0%	0%	0%	0%	0%	0%
							grade 2 events	5781	6159	5607	5026	5871	25488
								2%	2%	2%	2%	2%	8%
							grade 3 events	2463	2682	2343	2427	2550	11011
								1%	1%	1%	1%	1%	3%
							grade 4 events	2290	2477	2549	2444	2442	10811
								1%	1%	1%	1%	1%	3%
							grade 5 events	8570	9489	8533	10118	10403	28441
								4%	4%	3%	4%	4%	9%
							grade 6 events	4525	5347	4333	4601	5458	67573
								2%	2%	1%	2%	2%	22%
							grade 7 events	166627	168297	190936	184160	196284	147604
								82%	81%	83%	83%	84%	48%

2.2 Compared Parameters

Parameter	Planned	Actual	Parameter	Planned	Actual
Instrument	ACIS	ACIS	Obspar format version number	7	7
Detector	ACIS-012367	ACIS-012367	Obspar file type	PREDICTED	ACTUAL
Grating	NONE	NONE	Obspar update status	NONE	UPDATED
Data mode	FAINT	FAINT	Number of optional ACIS chips dropped	0	0
Observation mode	POINTING	POINTING	On-chip summing requested	N	N
[deg] Pointing RA	8.621524	8.657358963396044	Subarray requested	NONE	NONE
[deg] Pointing Dec	-43.625566	-43.61676950770827	Alternating exposures requested	N	N
[deg] Pointing Roll	348.236933	348.47033042639	[s] Primary exposure time	0.000000	3.2
[mm] SIM focus pos	-0.782348	-0.7809083437167272			
[mm] SIM defocus	0	0.001439871863259334			
[mm] SIM translation stage pos	-233.592463	-233.5874344608287			
[mm] SIM translation stage offset	0	-0.005018542100998502			
[s] Observation start time (MET)	277090565.184000	277089538.29124			
Observation start date	2006-10-13T01:35:00	2006-10-13T01:18:58			
[s] Observation end time (MET)	277114591.184000	277114829.65493			
Observation end date	2006-10-13T08:15:26	2006-10-13T08:20:29			
Read mode	TIMED	TIMED			

2.3 Aspect



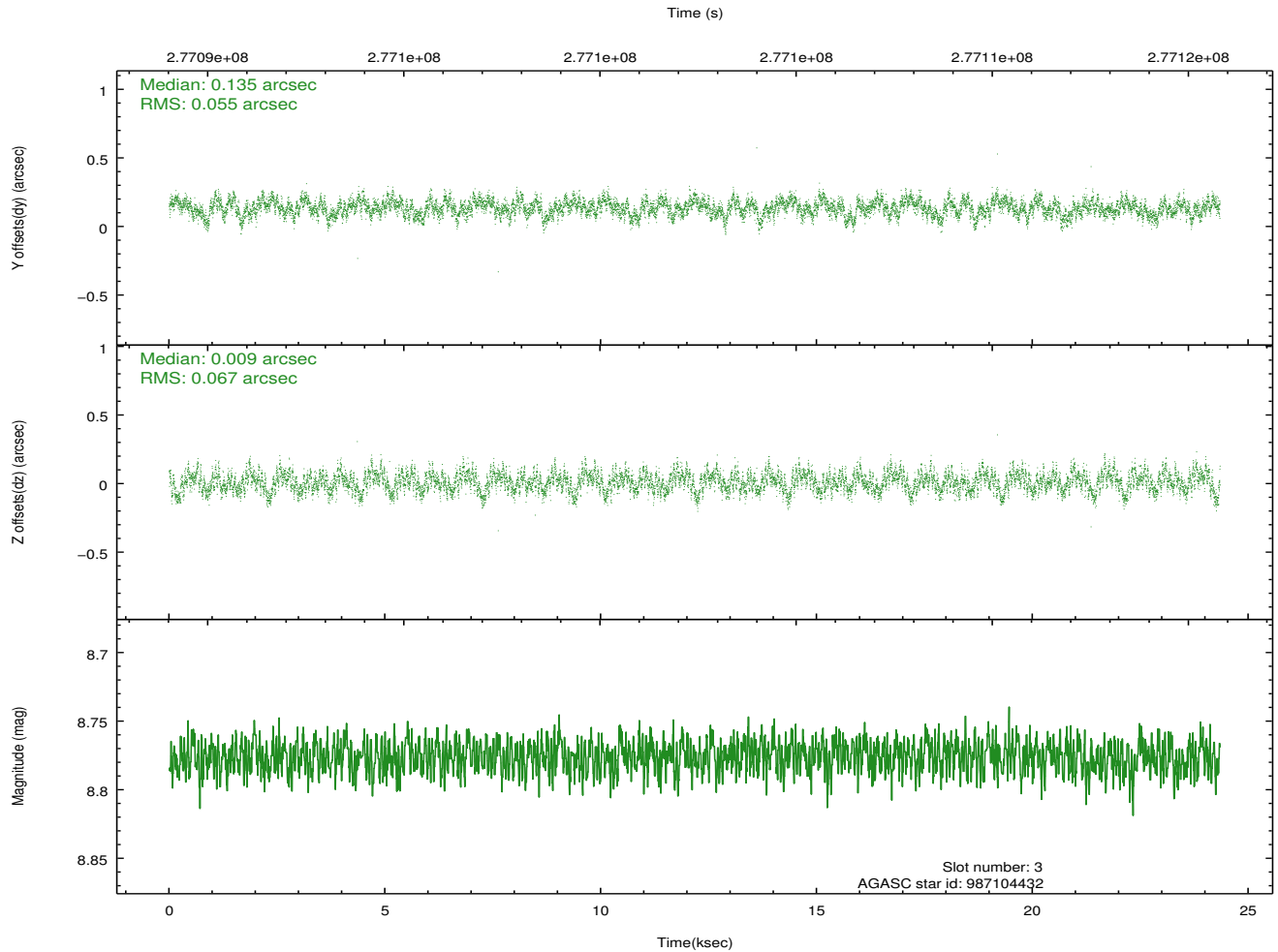
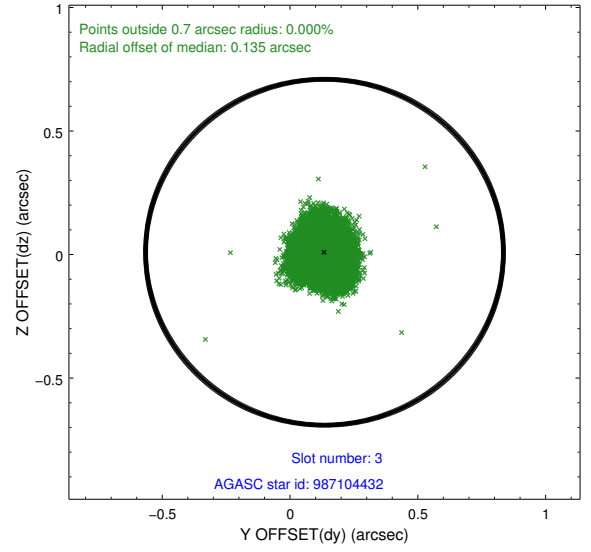
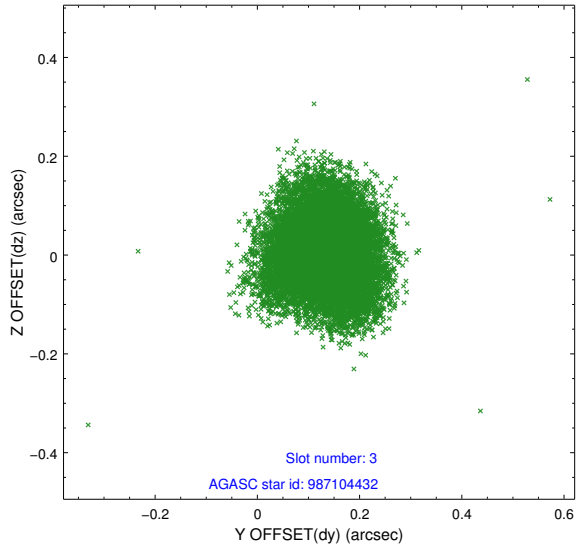


Slot Statistics

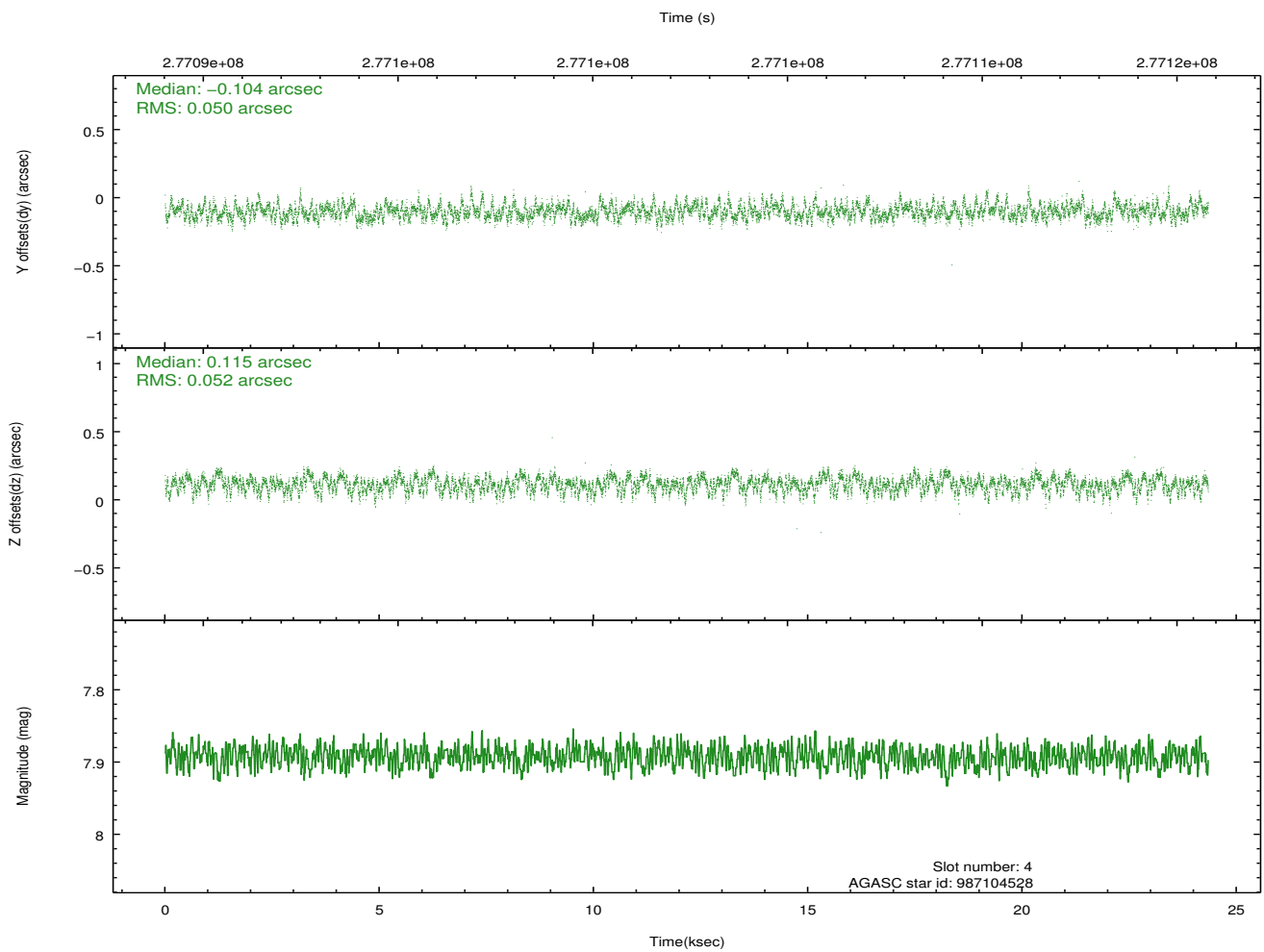
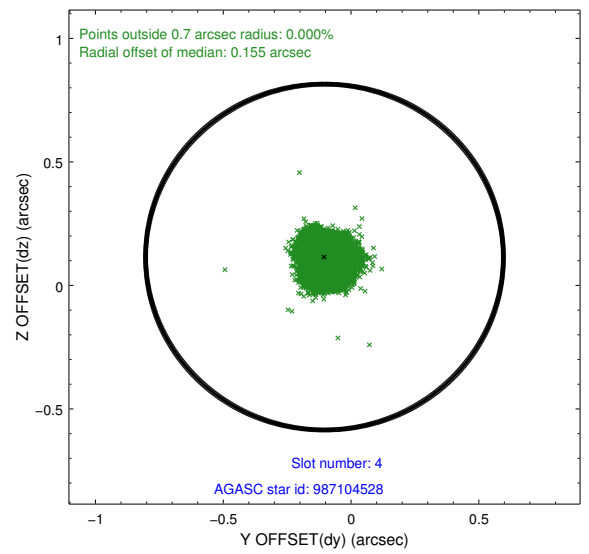
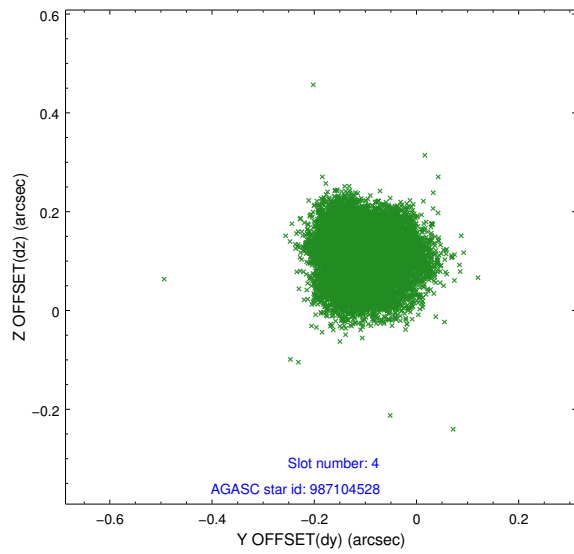
slot	status	id	mag	n_pts	med_dy	med_dz	dr1	dr2	ra	dec	mean_y	mean_z
0	FID	ACIS-I-1	7.25	5937	-0.001	-0.062	0.011	0.032	0.000000	0.000000	930.44	-835.05
1	FID	ACIS-I-4	7.17	5936	0.151	0.067	0.009	0.025	0.000000	0.000000	2150.73	1064.81
2	FID	ACIS-I-5	7.23	5938	-0.248	0.066	0.007	0.019	0.000000	0.000000	-1817.62	1062.84
3	GUIDE	987104432	8.78	11869	0.135	0.009	0.093	0.147	8.127720	-44.065974	-925.91	-1816.36
4	GUIDE	987104528	7.89	11872	-0.104	0.115	0.079	0.121	7.827041	-43.606390	-2039.37	-364.54
5	GUIDE	987105472	8.93	11865	0.038	-0.023	0.072	0.114	9.076108	-43.240154	884.34	1597.84
6	GUIDE	987110288	9.48	11868	-0.100	-0.061	0.104	0.167	8.853930	-43.126927	232.35	1881.08
7	GUIDE	987109640	9.16	11862	0.033	-0.031	0.148	0.212	9.479319	-43.964881	2427.97	-753.77

2.4 Star Slots

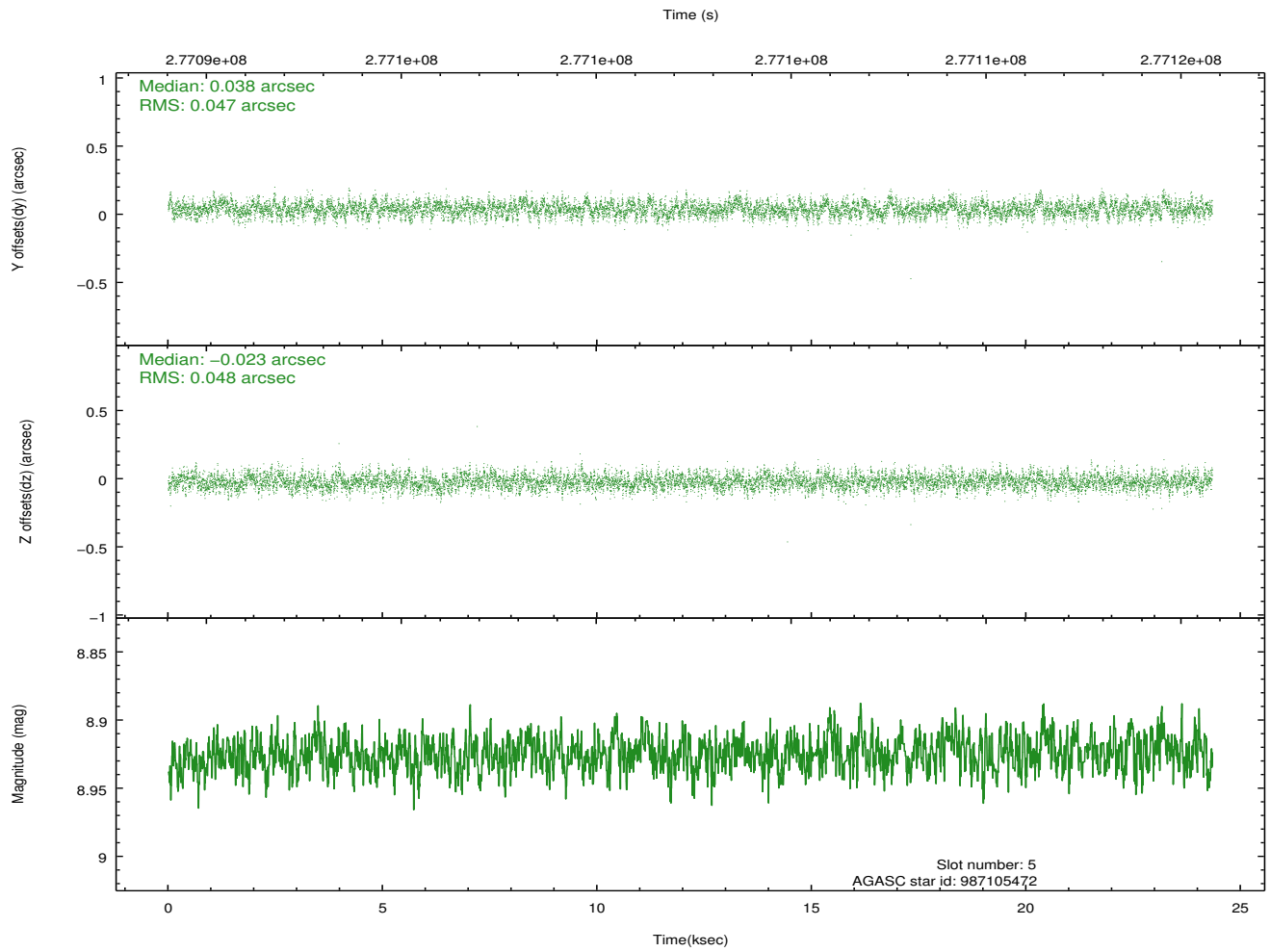
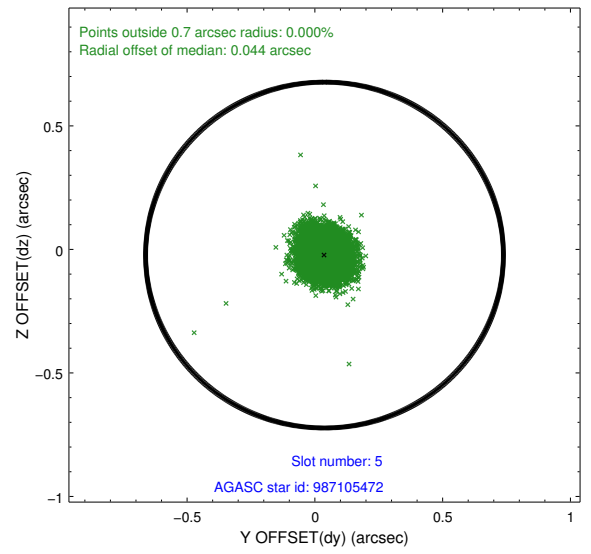
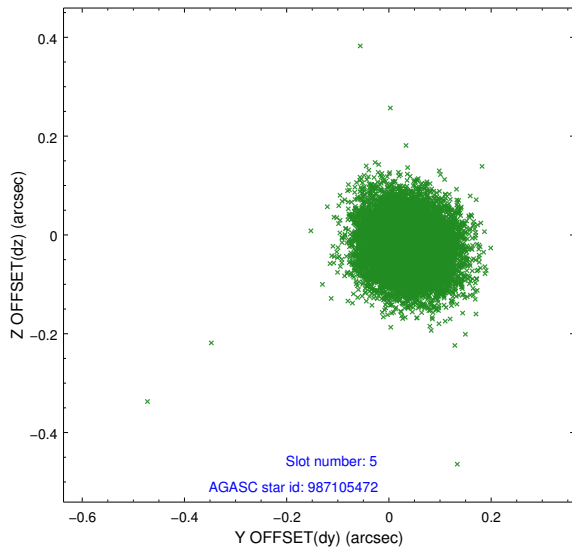
2.4.1 Slot 3



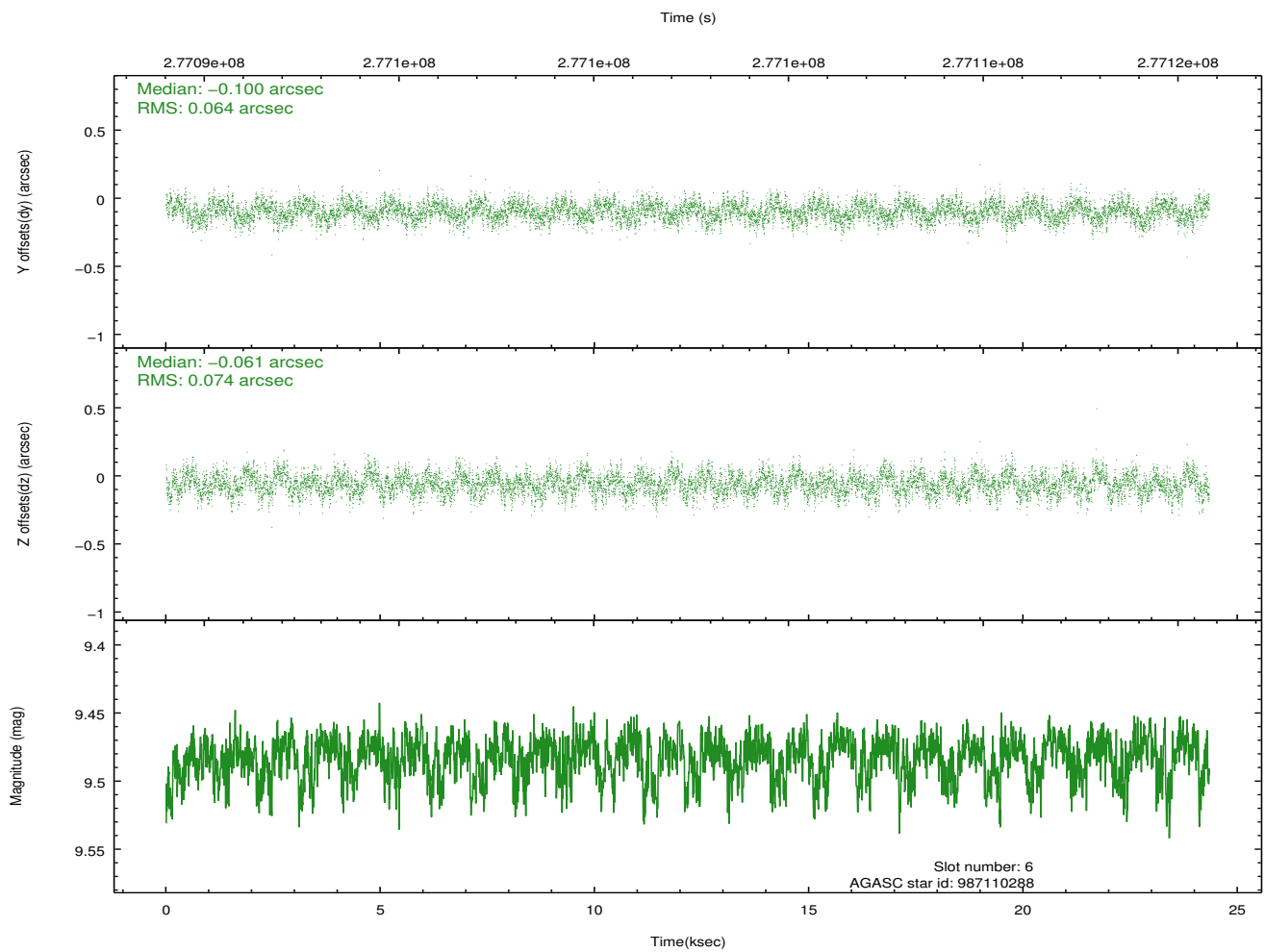
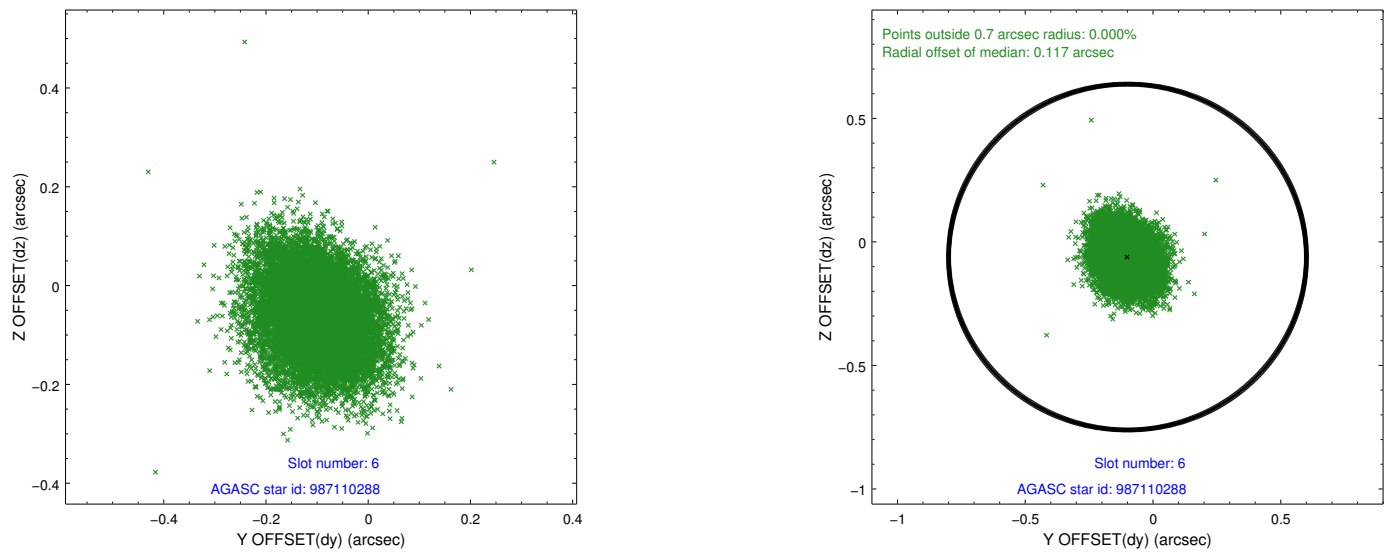
2.4.2 Slot 4



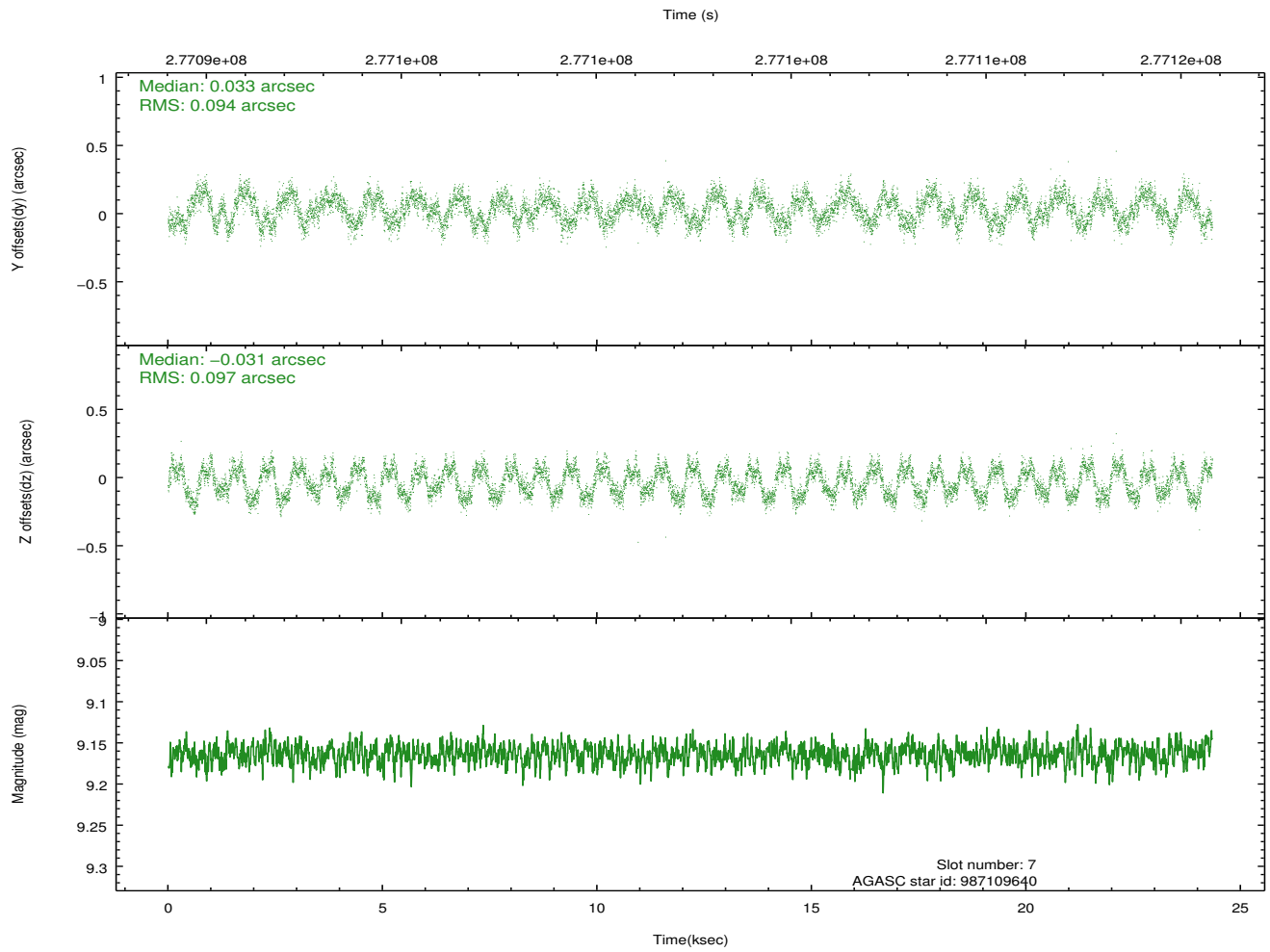
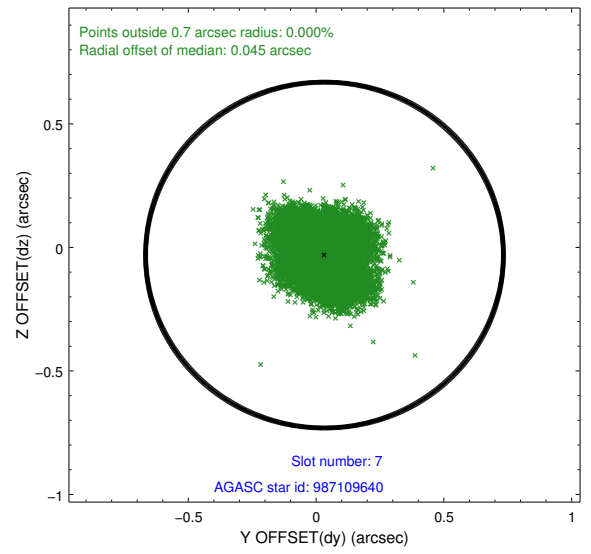
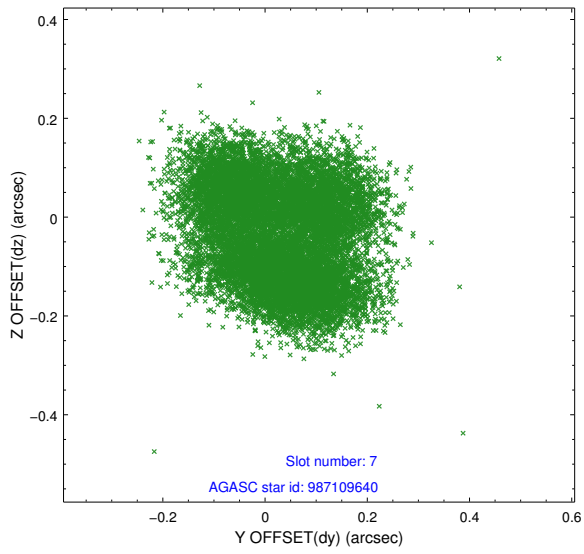
2.4.3 Slot 5



2.4.4 Slot 6

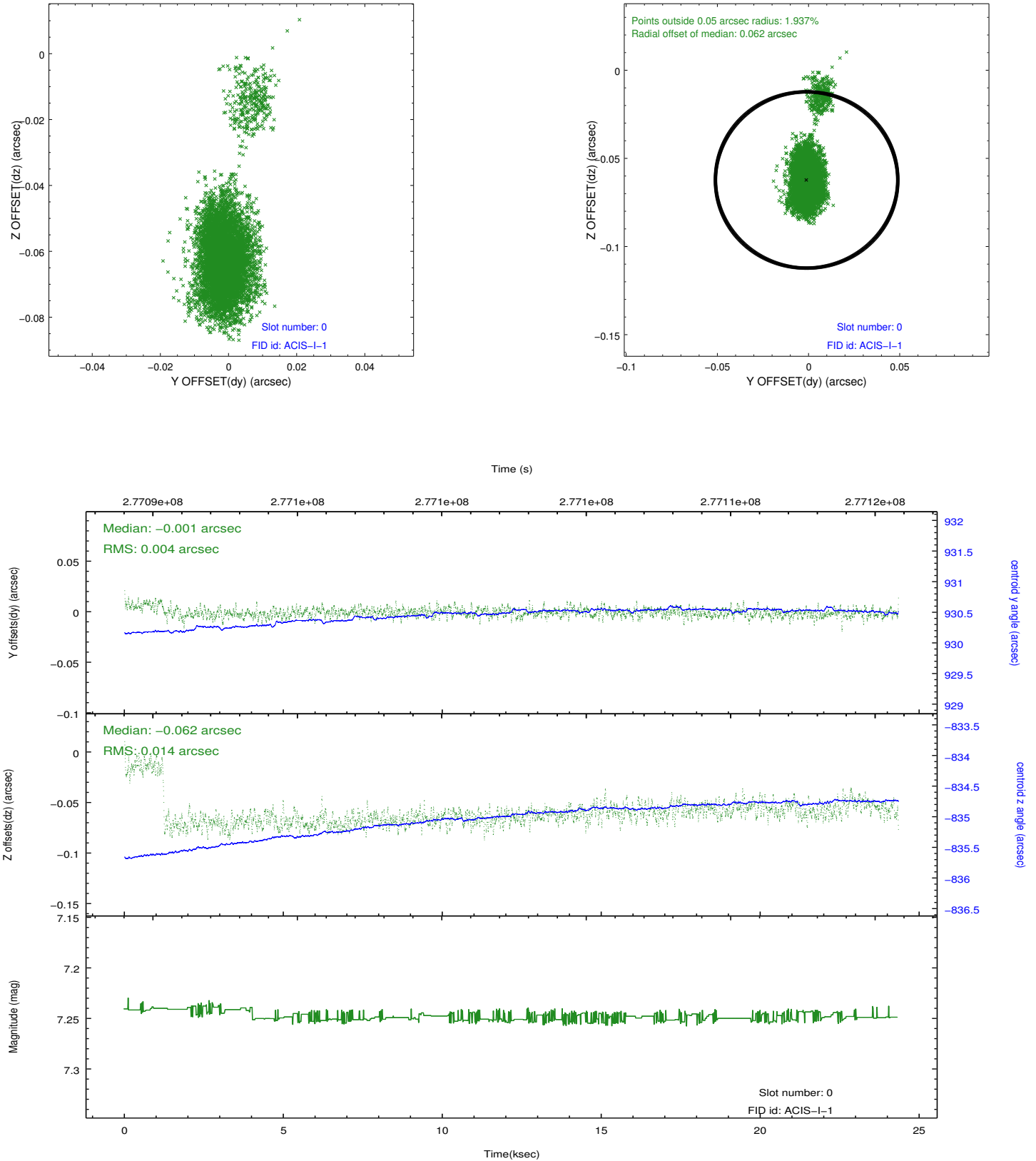


2.4.5 Slot 7

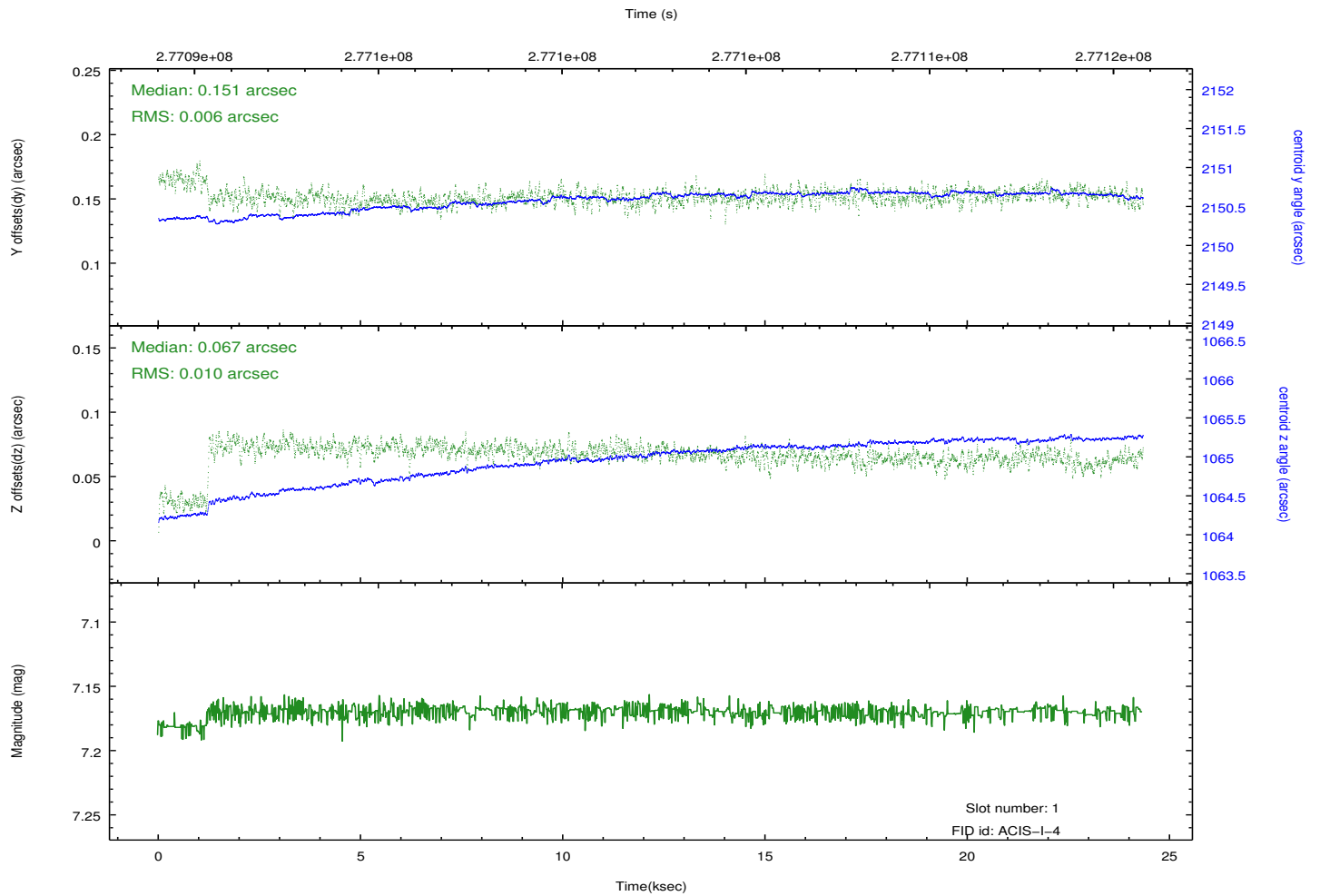
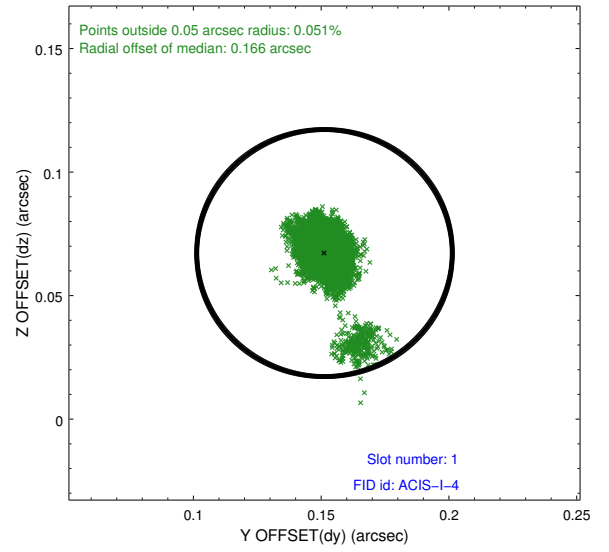
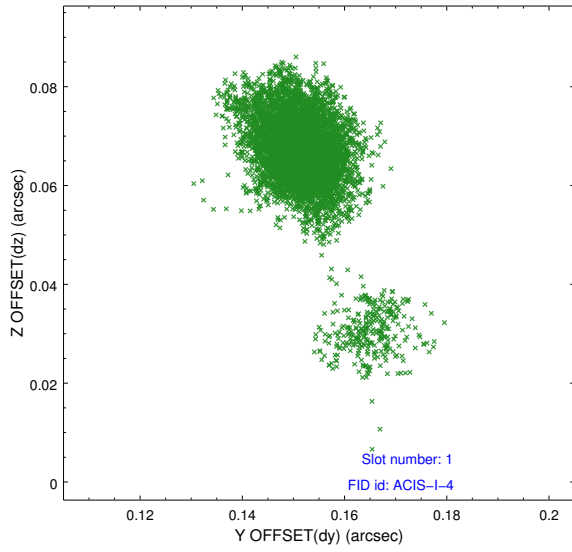


2.5 FID Slots

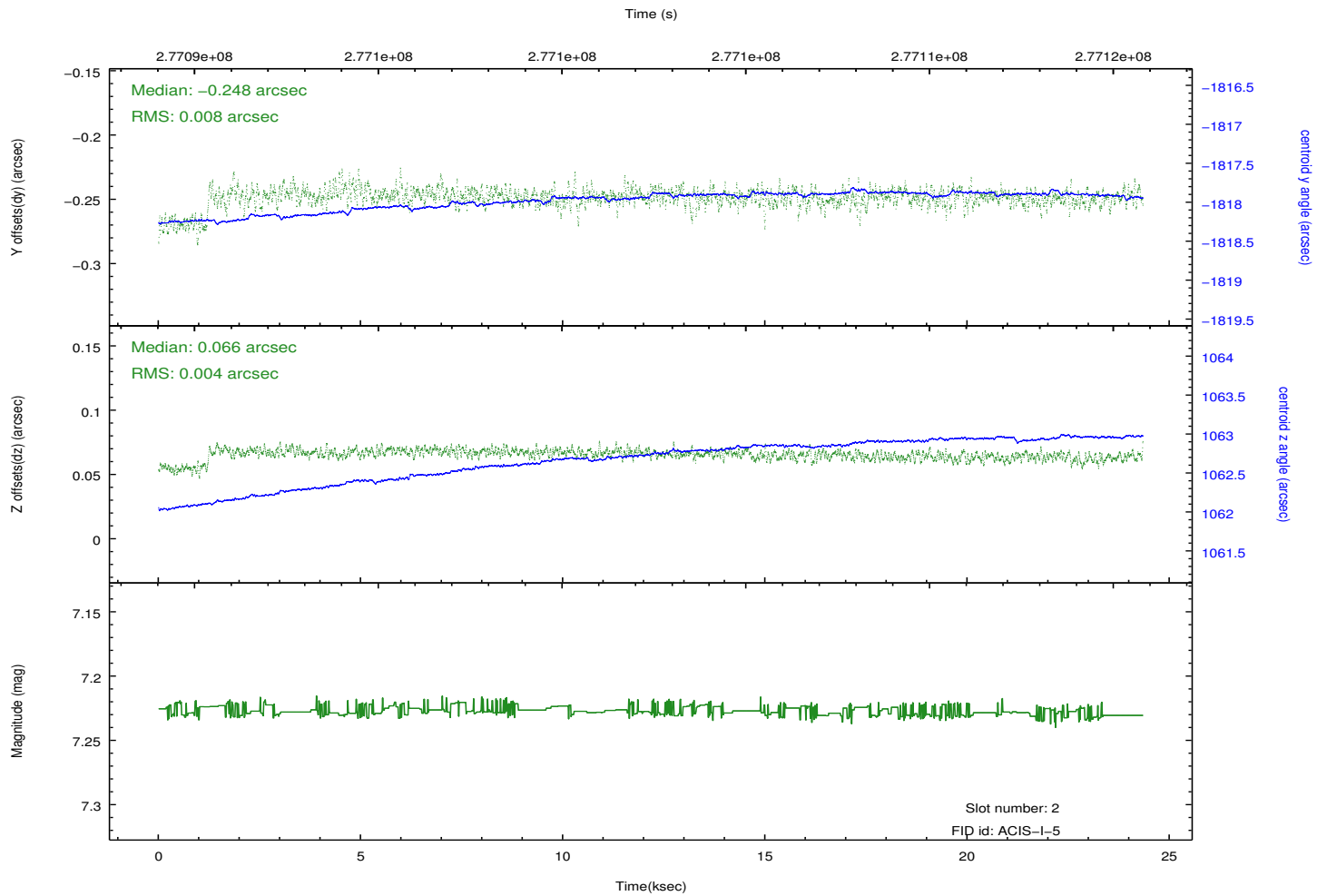
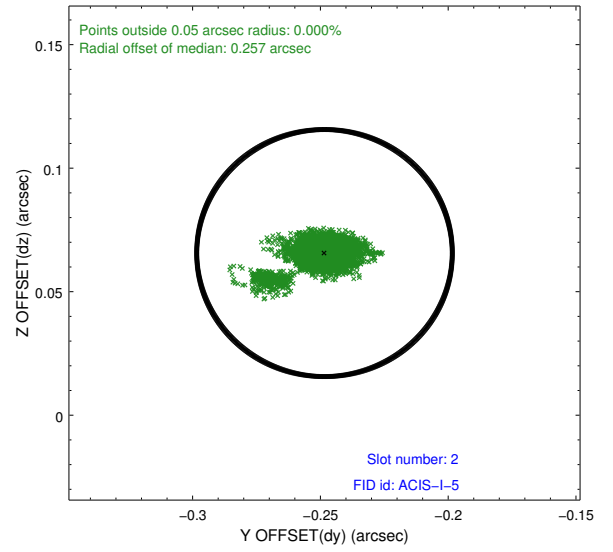
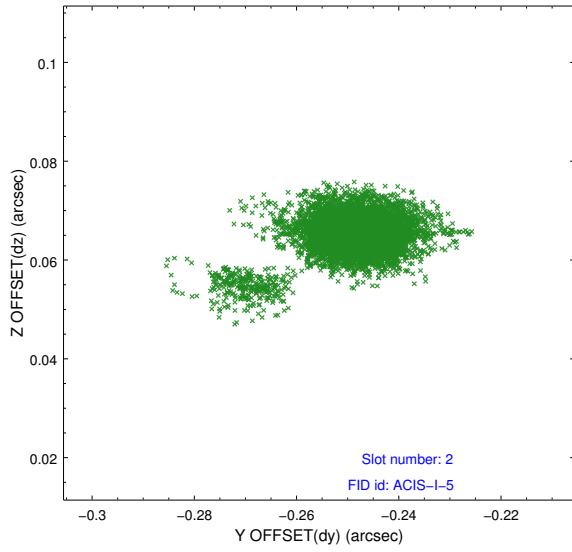
2.5.1 Slot 0



2.5.2 Slot 1



2.5.3 Slot 2



A Summary

A.1 Status

V&V Scientist	Beth Sundheim
V&V Date (YYYY-MM-DD)	2012.04.11
V&V Edition	1
V&V Disposition and Status	OK
V&V Charge Time	23.9743588

A.2 Comments