

V&V Reference Report

L2 ASCDS Version : 8.4.3.1

Observation 7039 - L2 Version 2
Chandra X-Ray Center

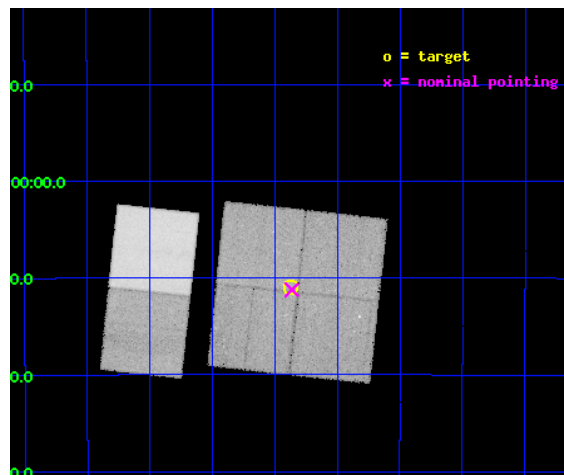
L2 Processing Date : Apr 6 2012

Contents

1	Front	2
2	OBI	3
2.1	OBI	3
2.1.1	Images	3
2.1.2	Bias	3
2.1.3	Parameters	4
2.1.4	Events	4
2.2	Compared Parameters	5
2.3	Aspect	6
2.4	Star Slots	9
2.4.1	Slot 3	9
2.4.2	Slot 4	10
2.4.3	Slot 5	11
2.4.4	Slot 6	12
2.4.5	Slot 7	13
2.5	FID Slots	14
2.5.1	Slot 0	14
2.5.2	Slot 1	15
2.5.3	Slot 2	16
A	Summary	17
A.1	Status	17
A.2	Comments	17

1 Front

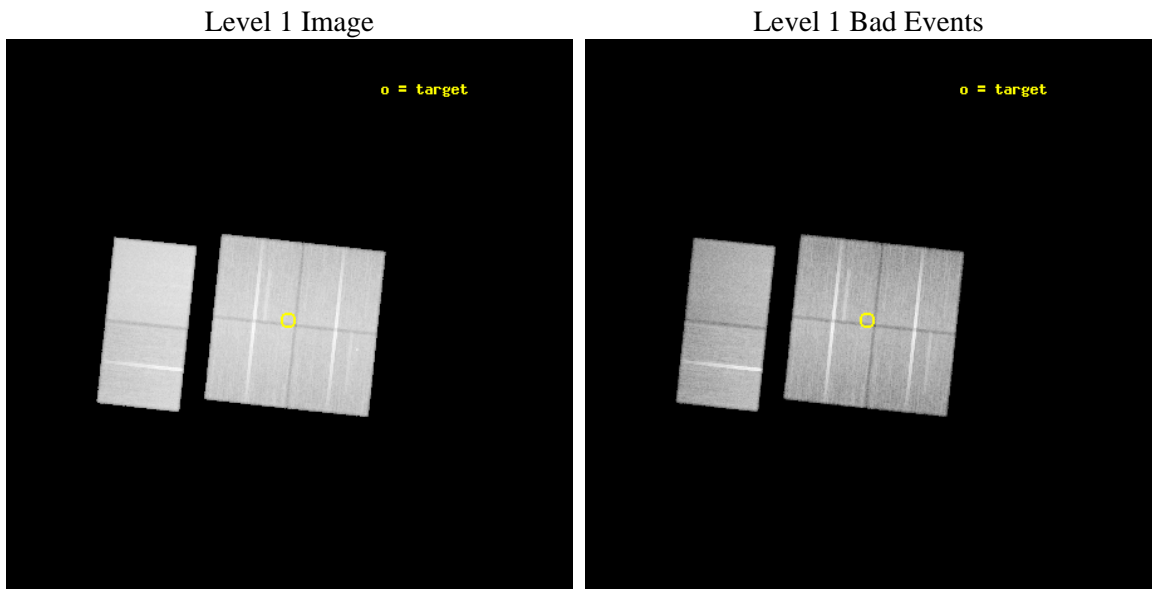
seq_num	900455	Sequence number
obs_id	7039	Observation id
title	A Legacy Study of Stellar Life Cycles at the Galactic Center	Propo
observer	Dr. Michael Muno	Principal investigator
object	Deep GCS 7	Source name
dtcycle	0	
cycle	P	events from which exps? Prim/Second/Both
ra_targ	265.9675	Observer's specified target RA [deg]
dec_targ	-29.182806	Observer's specified target Dec [deg]
ra_nom	265.96597864992	Nominal RA [deg]
dec_nom	-29.187258008336	Nominal Dec [deg]
roll_nom	276.11989109136	Nominal Roll [deg]
revision	2	Processing version of data
ontime	38255.982362628	Sum of GTIs [s]
livetime	37771.562078965	Livetime [s]
ontime0	38255.859252512	Sum of GTIs [s]
ontime1	38255.900292516	Sum of GTIs [s]
ontime2	38252.700381815	Sum of GTIs [s]
ontime3	38255.982362628	Sum of GTIs [s]
ontime6	38255.999857545	Sum of GTIs [s]
ontime7	38255.999857545	Sum of GTIs [s]
l2events	416771	Number of level 2 events



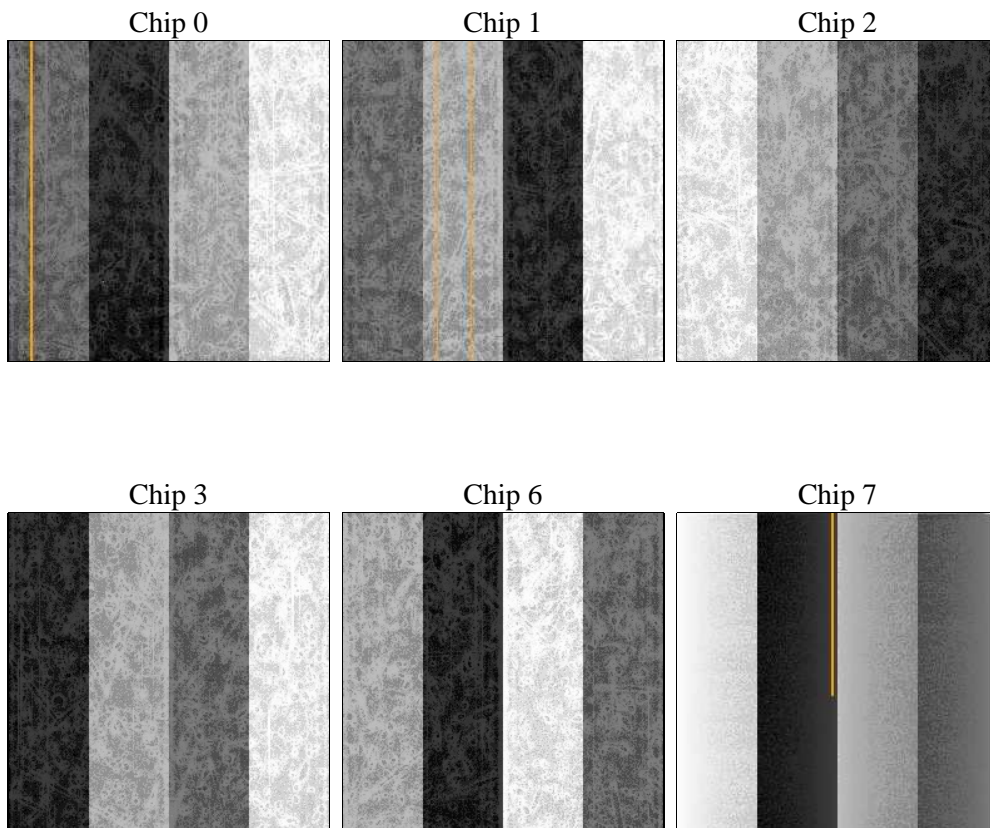
2 OBI

2.1 OBI

2.1.1 Images



2.1.2 Bias



2.1.3 Parameters

obi_num	0	Obi number	sched_exp_time	38500.000000	[s] Scheduled observation exposure time
ascdsver	8.4.3.1	Processing system revision	ontime	38255.982362628	Sum of GTIs [s]
caldbver	4.4.9	 	ontime0	38255.859252512	Sum of GTIs [s]
date	2012-04-06T03:47:49	Date and time of file creation	ontime1	38255.900292516	Sum of GTIs [s]
revision	2	Processing version of data	ontime2	38252.700381815	Sum of GTIs [s]
			ontime3	38255.982362628	Sum of GTIs [s]
			ontime6	38255.999857545	Sum of GTIs [s]
			ontime7	38255.999857545	Sum of GTIs [s]
			l1events	2231232	Number of level 1 events

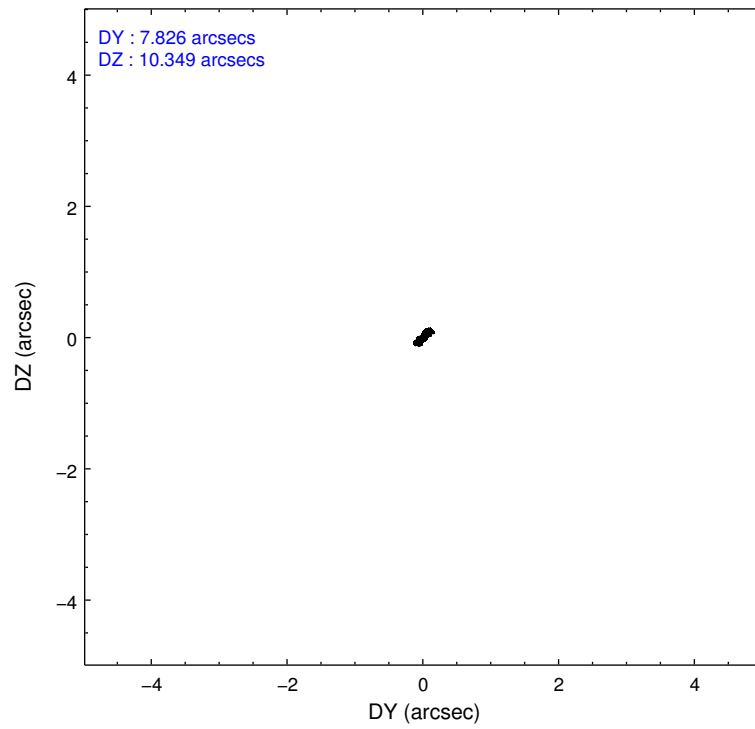
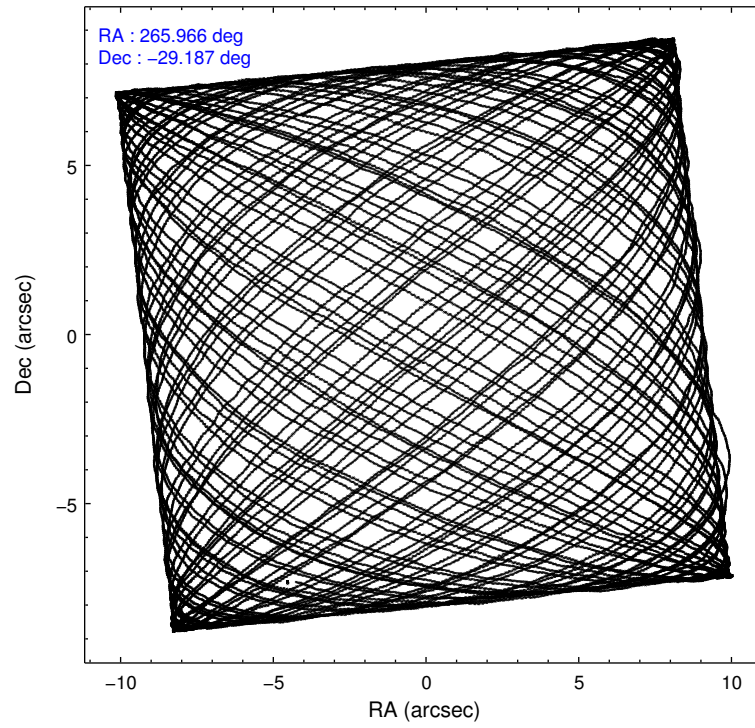
2.1.4 Events

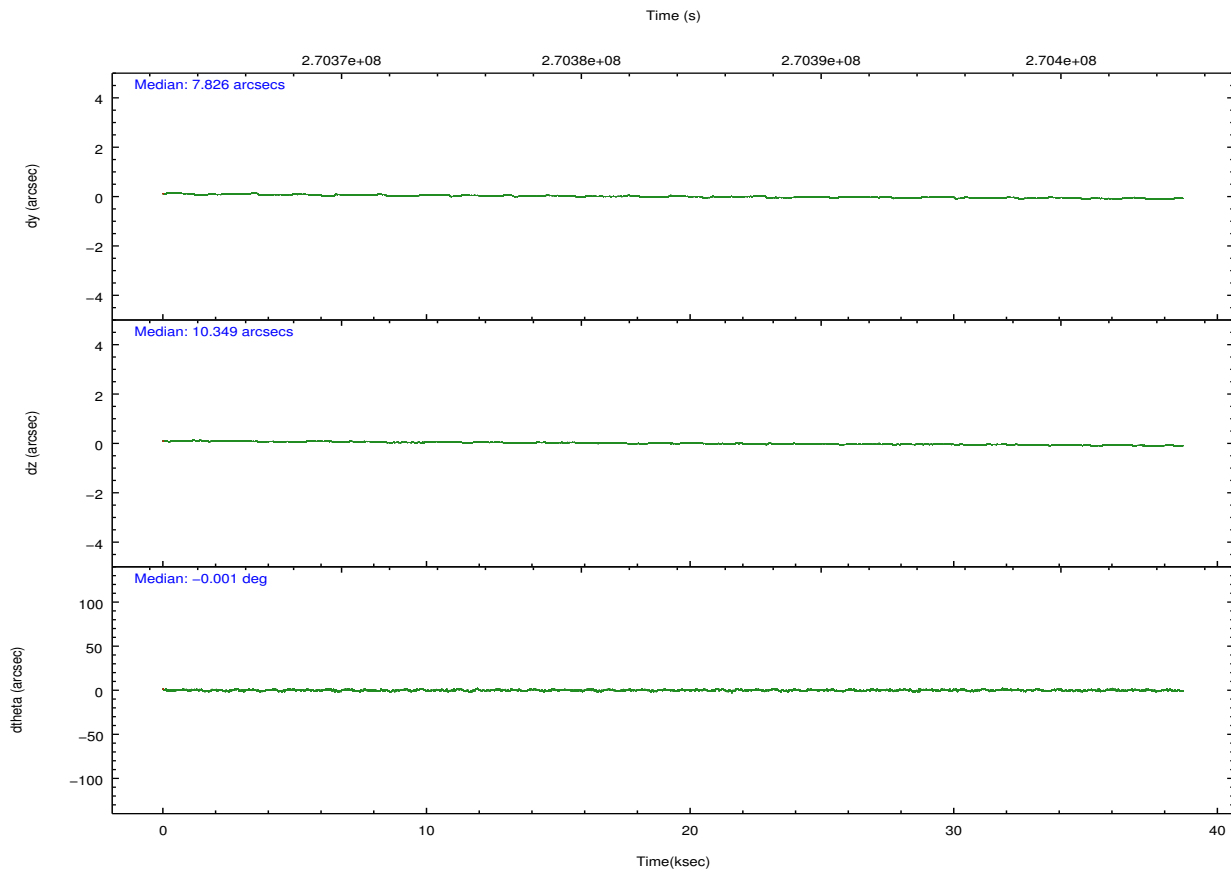
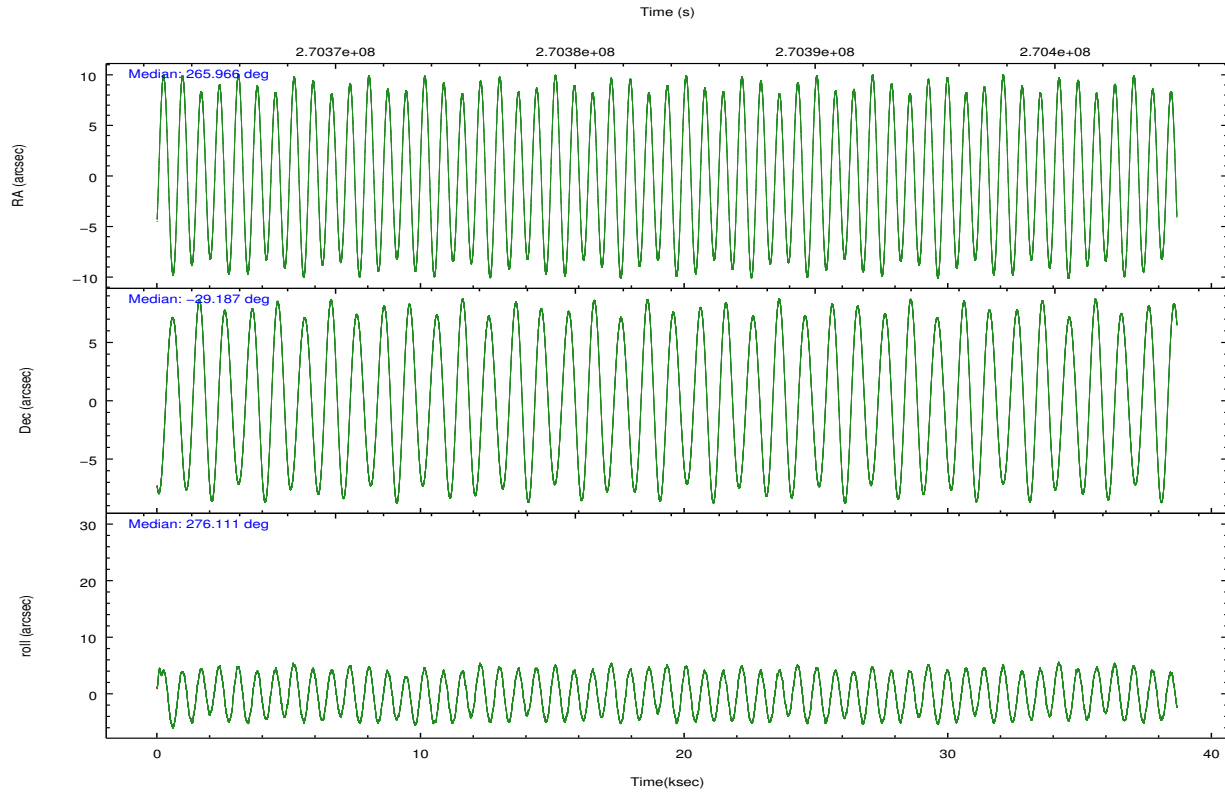
	ccd 0	ccd 1	ccd 2	ccd 3	ccd 6	ccd 7		ccd 0	ccd 1	ccd 2	ccd 3	ccd 6	ccd 7
level 1 events	321623	334098	361780	353195	376051	484485	grade 0 events	21283	20584	21909	24254	22854	19339
rejected events	275004	285111	315059	303278	324702	276313		6%	6%	6%	6%	6%	3%
rejected %	85%	85%	87%	85%	86%	57%	grade 1 events	221	205	235	267	218	460
								0%	0%	0%	0%	0%	0%
							grade 2 events	9705	10630	9348	9164	10542	42406
								3%	3%	2%	2%	2%	8%
							grade 3 events	4247	4391	4126	4326	4362	18223
								1%	1%	1%	1%	1%	3%
							grade 4 events	3902	4390	4075	4296	4467	17955
								1%	1%	1%	1%	1%	3%
							grade 5 events	13416	14791	12880	15657	16428	44791
								4%	4%	3%	4%	4%	9%
							grade 6 events	7486	8996	7263	7881	9128	110264
								2%	2%	2%	2%	2%	22%
							grade 7 events	261363	270111	301944	287350	308052	231047
								81%	80%	83%	81%	81%	47%

2.2 Compared Parameters

Parameter	Planned	Actual	Parameter	Planned	Actual
Instrument	ACIS	ACIS	Obspar format version number	7	7
Detector	ACIS-012367	ACIS-012367	Obspar file type	PREDICTED	ACTUAL
Grating	NONE	NONE	Obspar update status	NONE	UPDATED
Data mode	FAINT	FAINT	Number of optional ACIS chips dropped	0	0
Observation mode	POINTING	POINTING	On-chip summing requested	N	N
[deg] Pointing RA	265.947373	265.9659786499182	Subarray requested	NONE	NONE
[deg] Pointing Dec	-29.165184	-29.18725800833606	Alternating exposures requested	N	N
[deg] Pointing Roll	275.902134	276.1198910913595	[s] Primary exposure time	0.000000	3.2
[mm] SIM focus pos	-0.782348	-0.7809083437167272			
[mm] SIM defocus	0	0.001439871863259334			
[mm] SIM translation stage pos	-233.592463	-233.5874344608287			
[mm] SIM translation stage offset	0	-0.005018542100998502			
[s] Observation start time (MET)	270364674.184000	270364298.23765			
Observation start date	2006-07-27T05:16:49	2006-07-27T05:11:38			
[s] Observation end time (MET)	270403174.184000	270403876.56451			
Observation end date	2006-07-27T15:58:29	2006-07-27T16:11:16			
Read mode	TIMED	TIMED			

2.3 Aspect



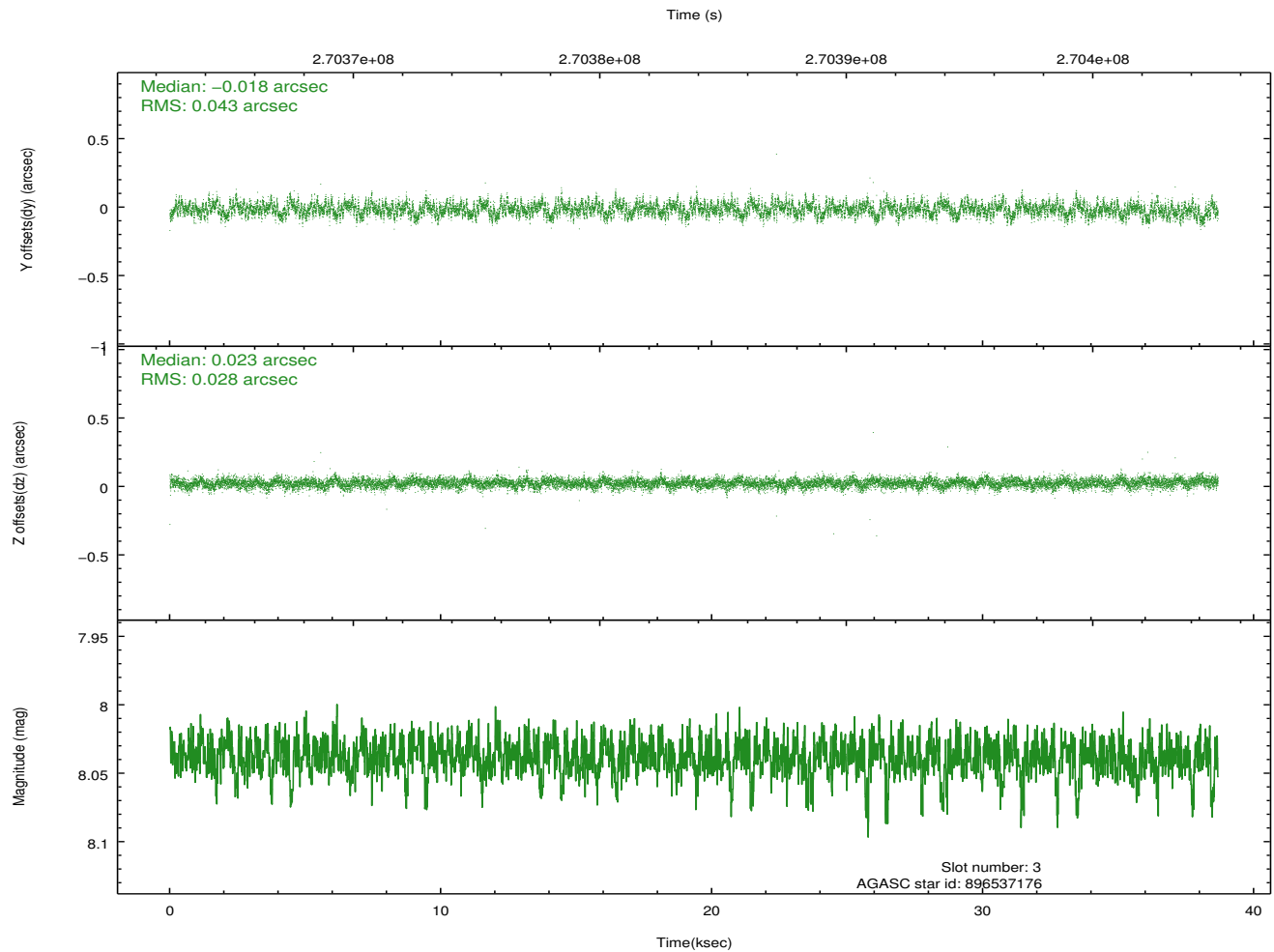
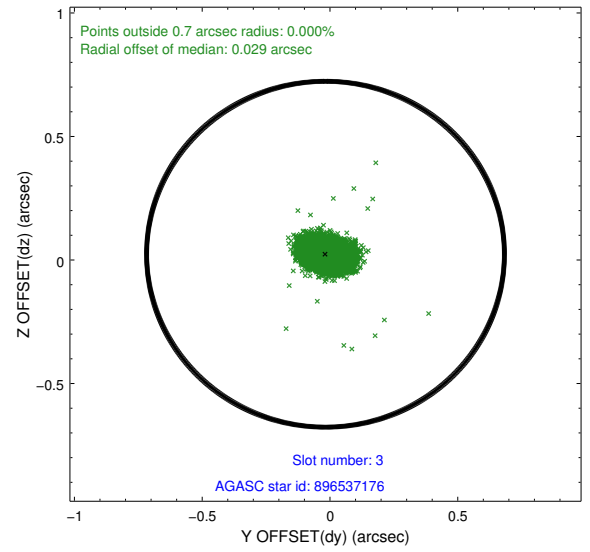
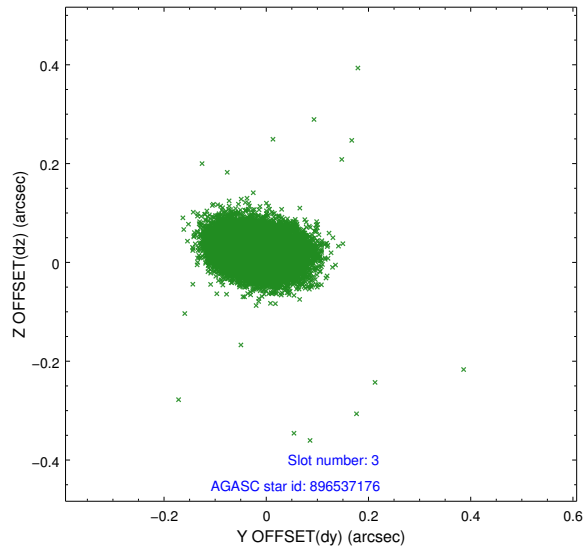


Slot Statistics

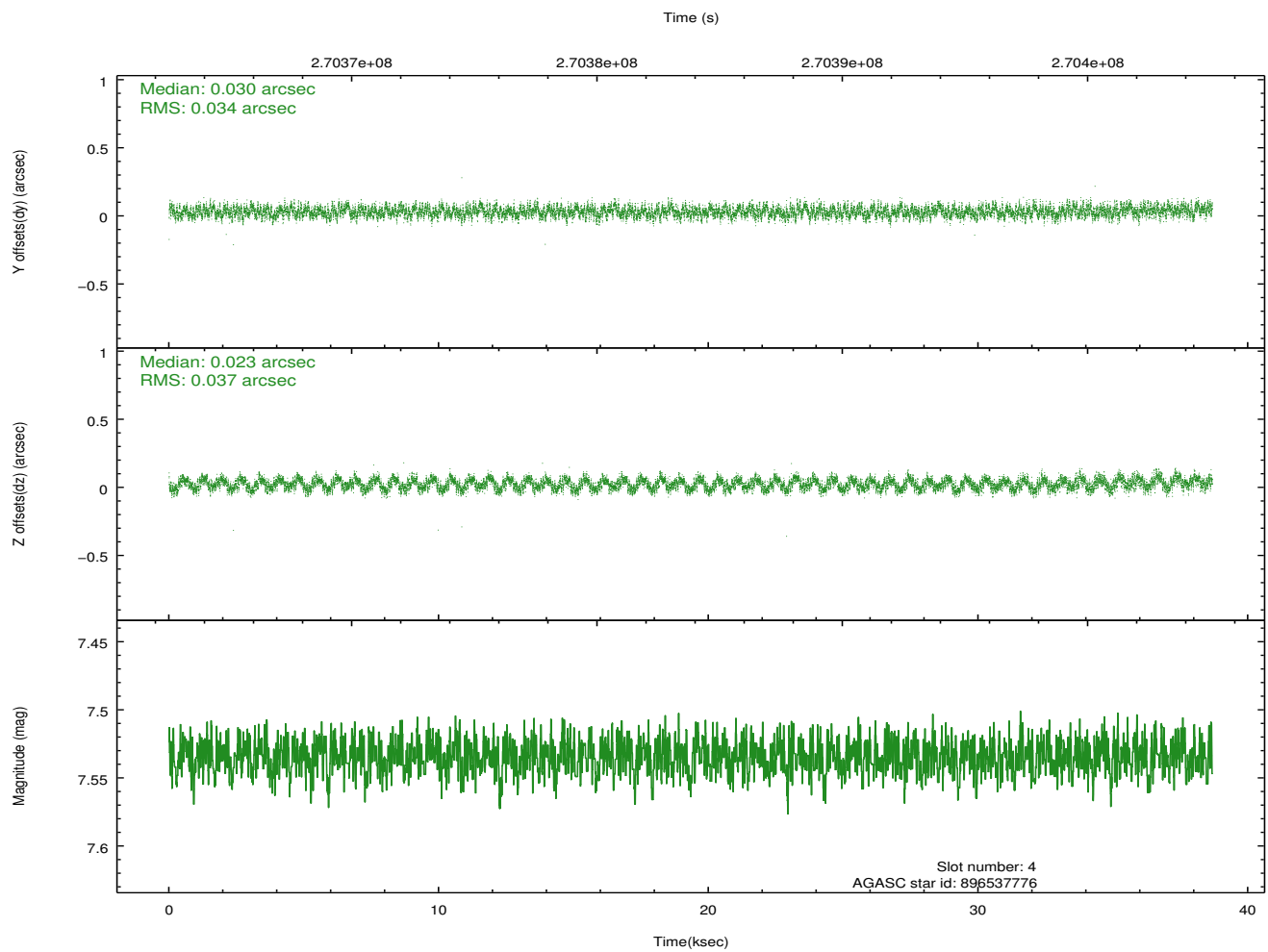
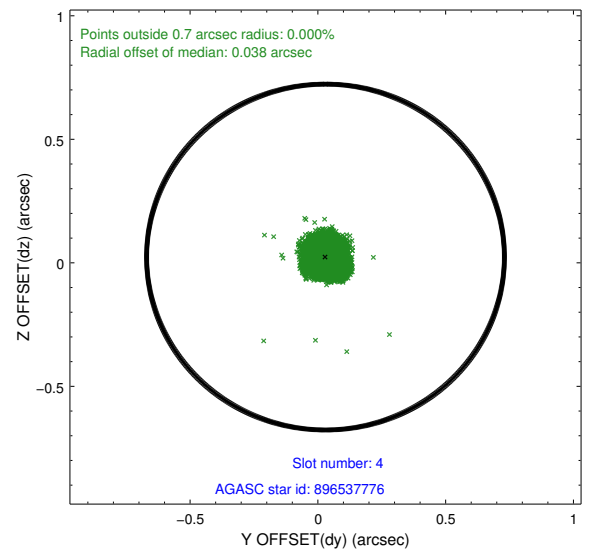
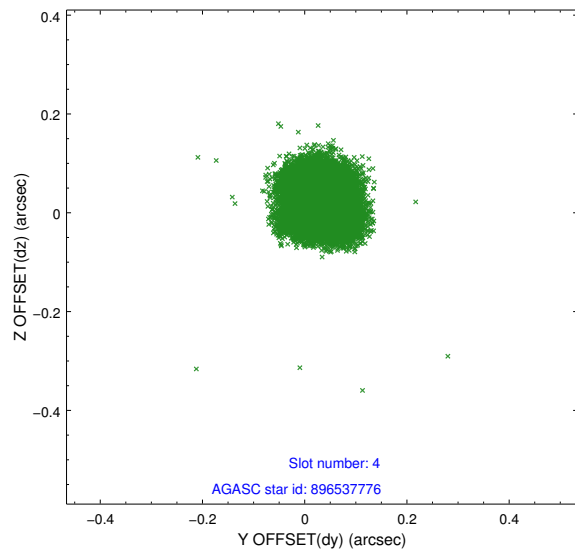
slot	status	id	mag	n_pts	med_dy	med_dz	dr1	dr2	ra	dec	mean_y	mean_z
0	FID	ACIS-I-1	7.25	9434	-0.014	0.013	0.011	0.019	0.000000	0.000000	931.80	-833.83
1	FID	ACIS-I-4	7.18	9435	0.165	0.022	0.011	0.017	0.000000	0.000000	2152.07	1065.95
2	FID	ACIS-I-5	7.23	9434	-0.249	0.036	0.009	0.017	0.000000	0.000000	-1816.37	1063.91
3	GUIDE	896537176	8.04	18867	-0.018	0.023	0.053	0.090	266.498272	-28.678259	-1560.79	1910.32
4	GUIDE	896537776	7.53	18861	0.030	0.023	0.055	0.084	266.655684	-29.665673	2026.67	2018.44
5	GUIDE	896405480	8.26	18860	-0.077	0.117	0.070	0.114	265.220460	-29.599691	1329.71	-2424.57
6	GUIDE	896403224	8.27	18866	0.104	-0.009	0.058	0.093	265.612825	-29.438915	874.60	-1144.83
7	GUIDE	896533888	7.04	18868	-0.042	-0.154	0.053	0.084	266.666434	-29.392757	1053.67	2158.39

2.4 Star Slots

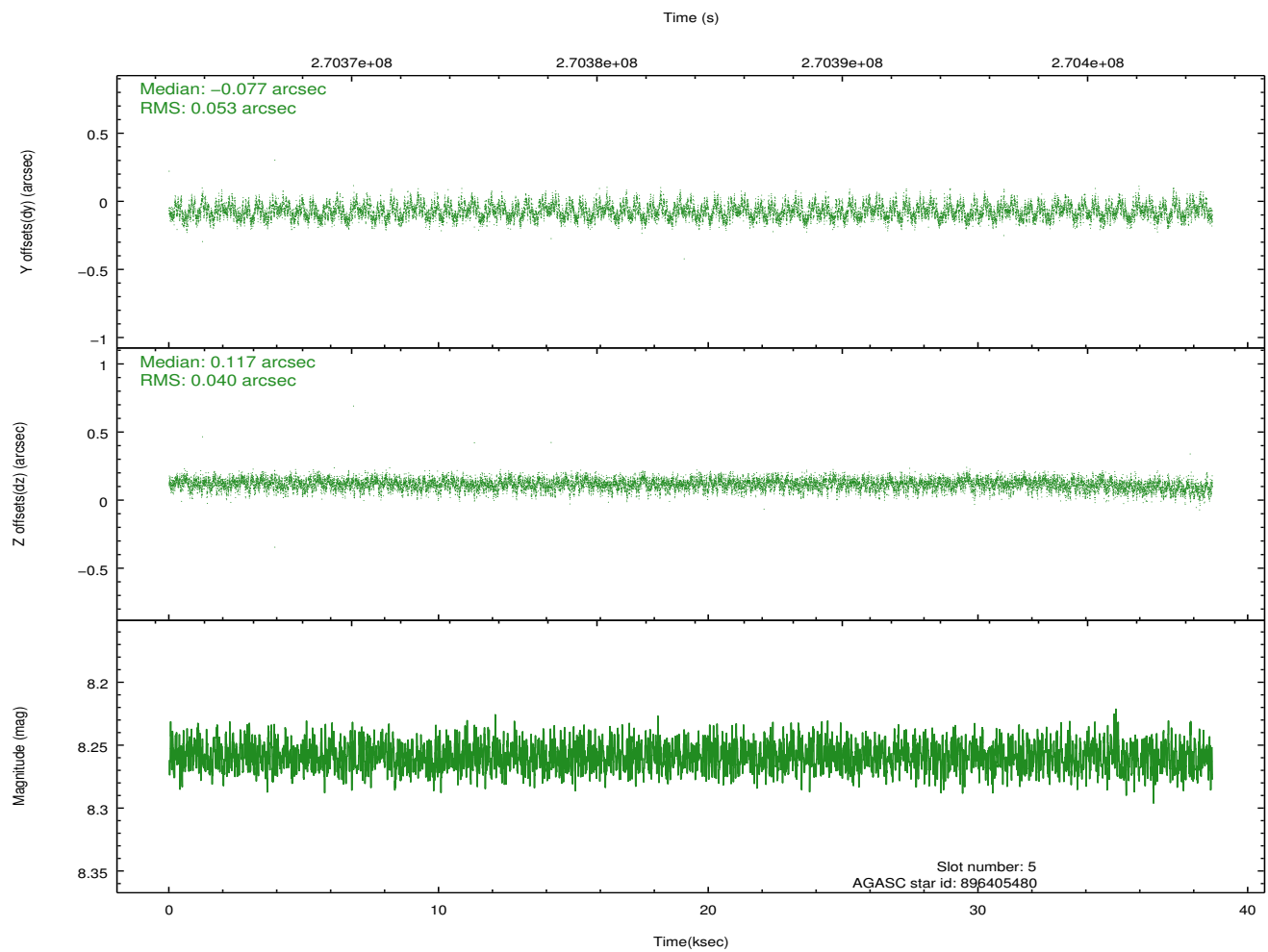
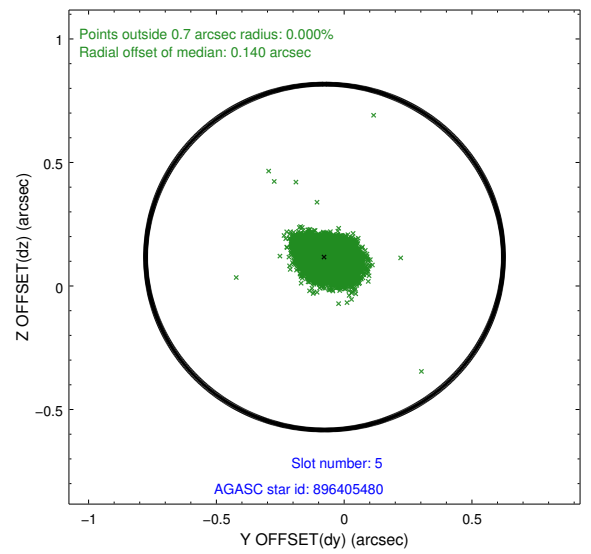
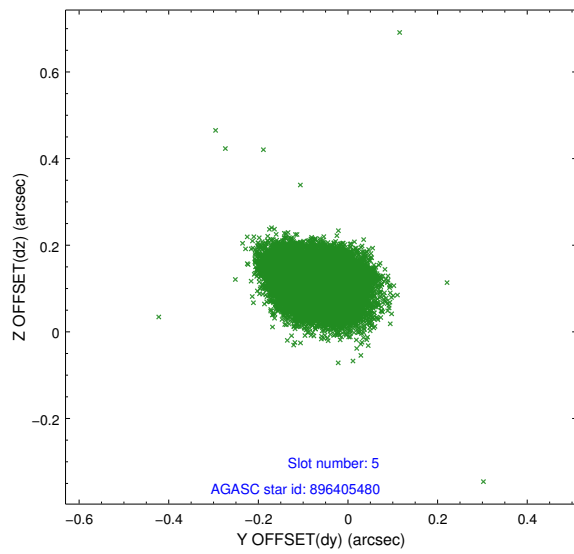
2.4.1 Slot 3



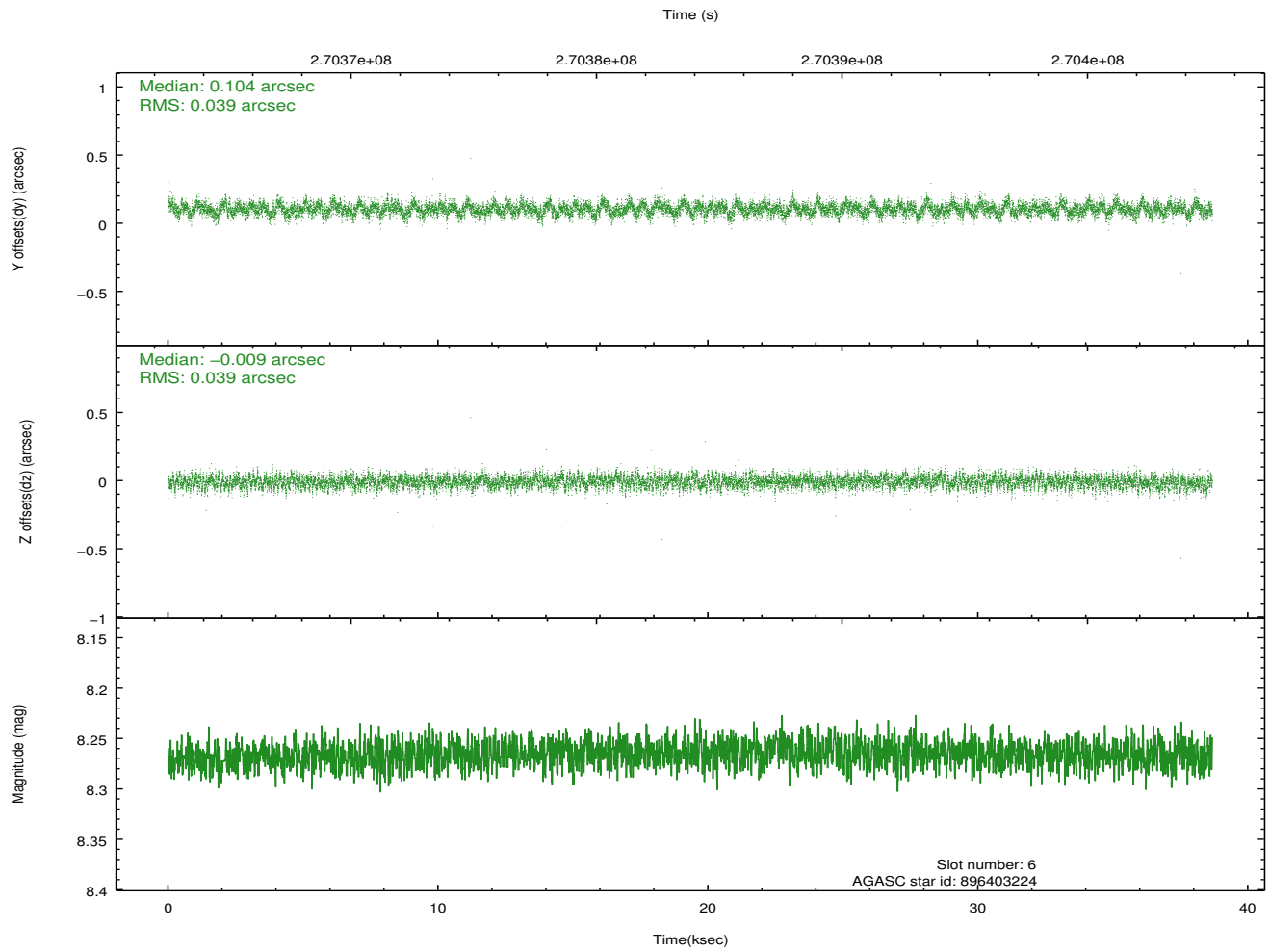
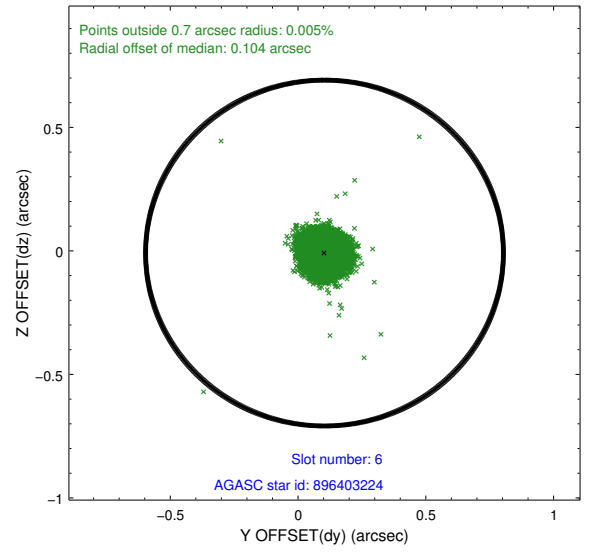
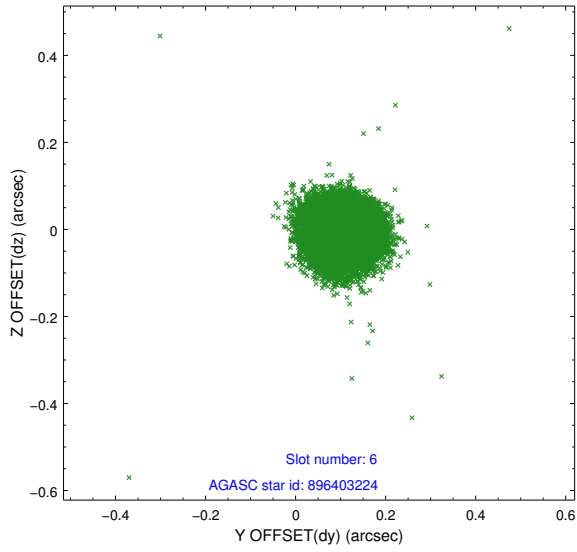
2.4.2 Slot 4



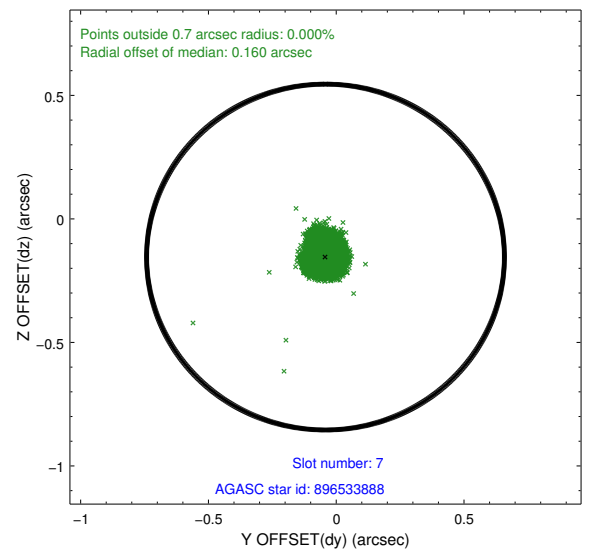
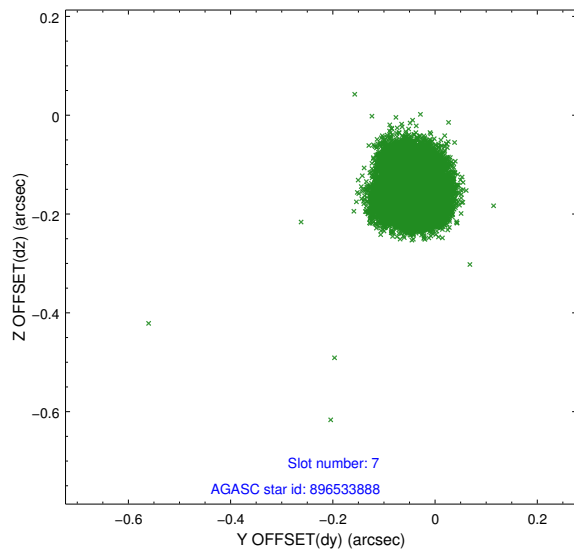
2.4.3 Slot 5



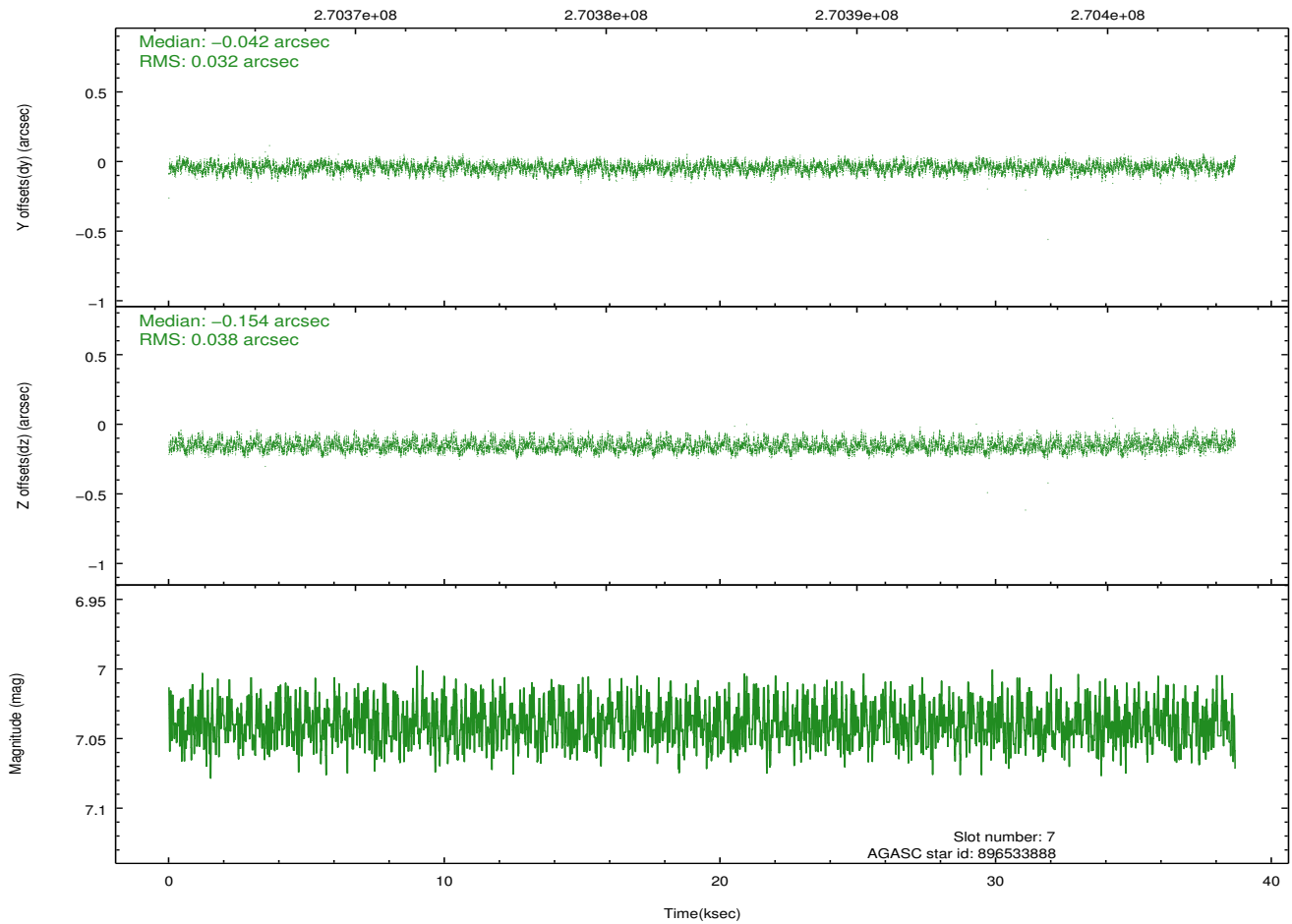
2.4.4 Slot 6



2.4.5 Slot 7

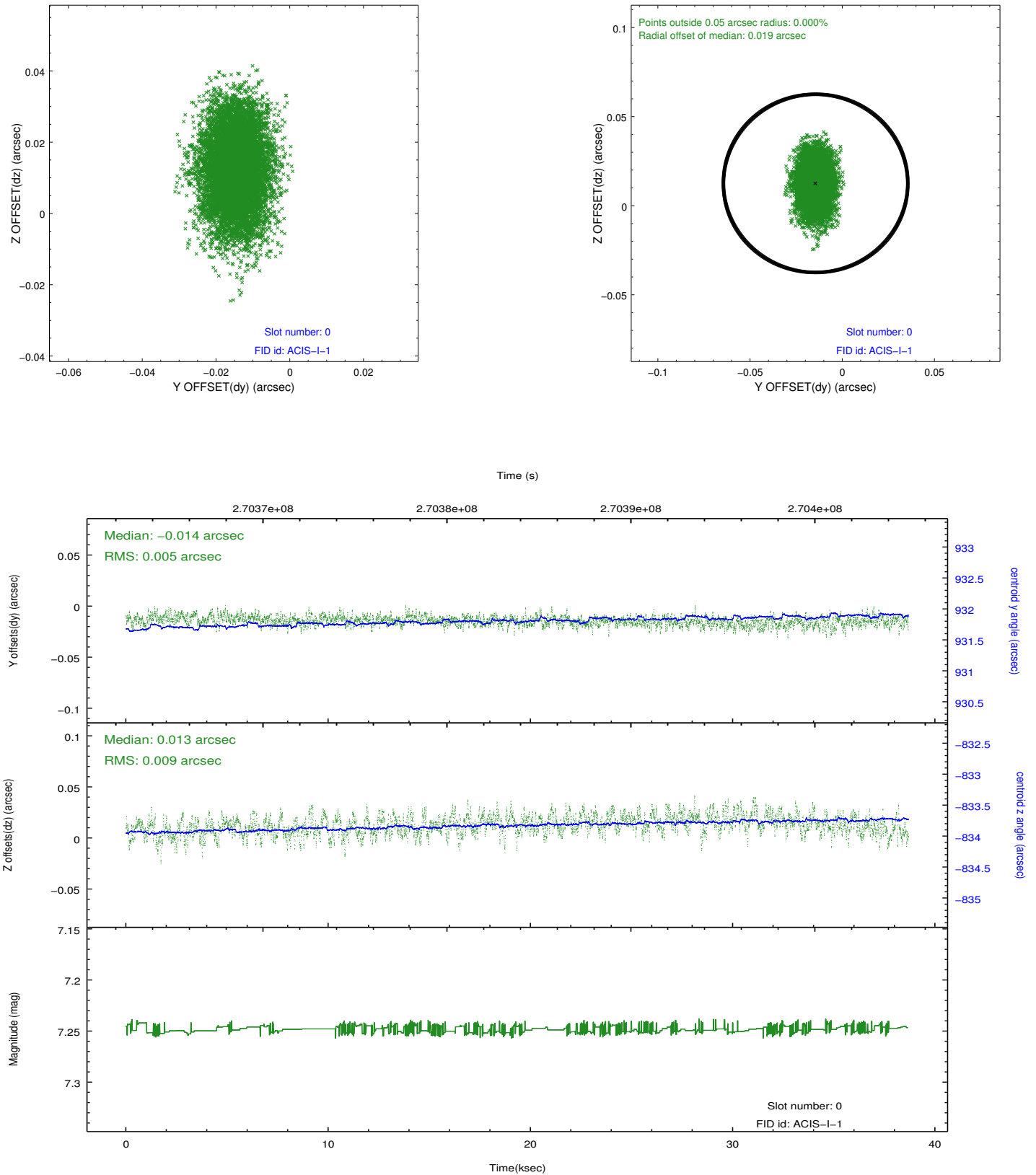


Time (s)

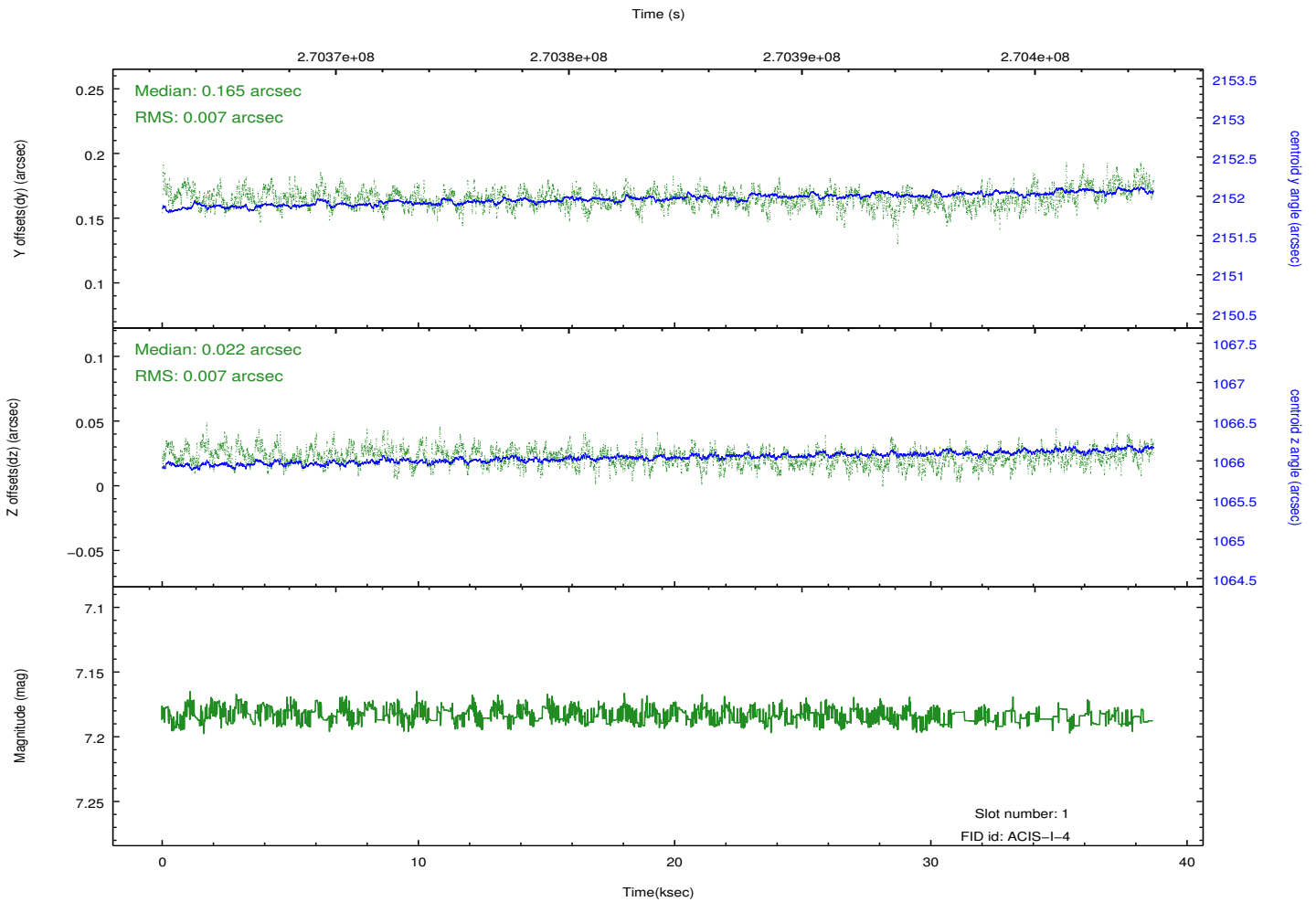
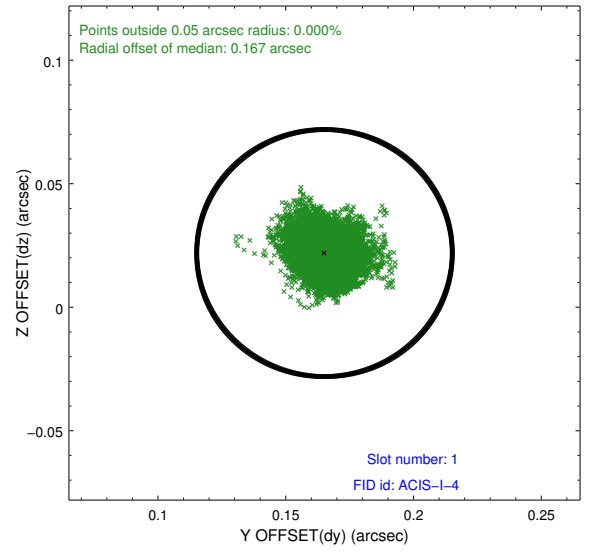
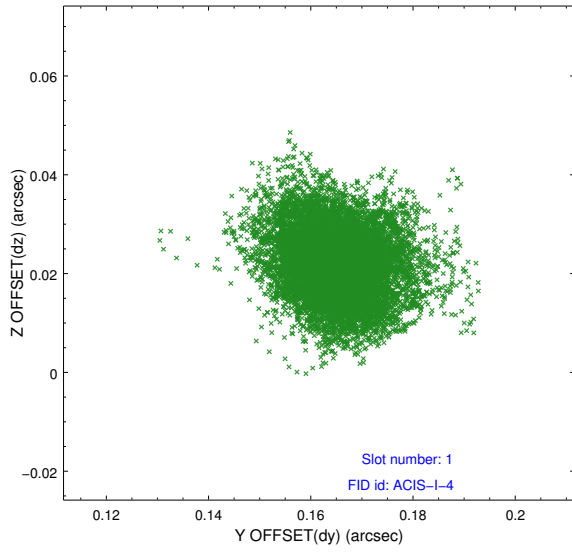


2.5 FID Slots

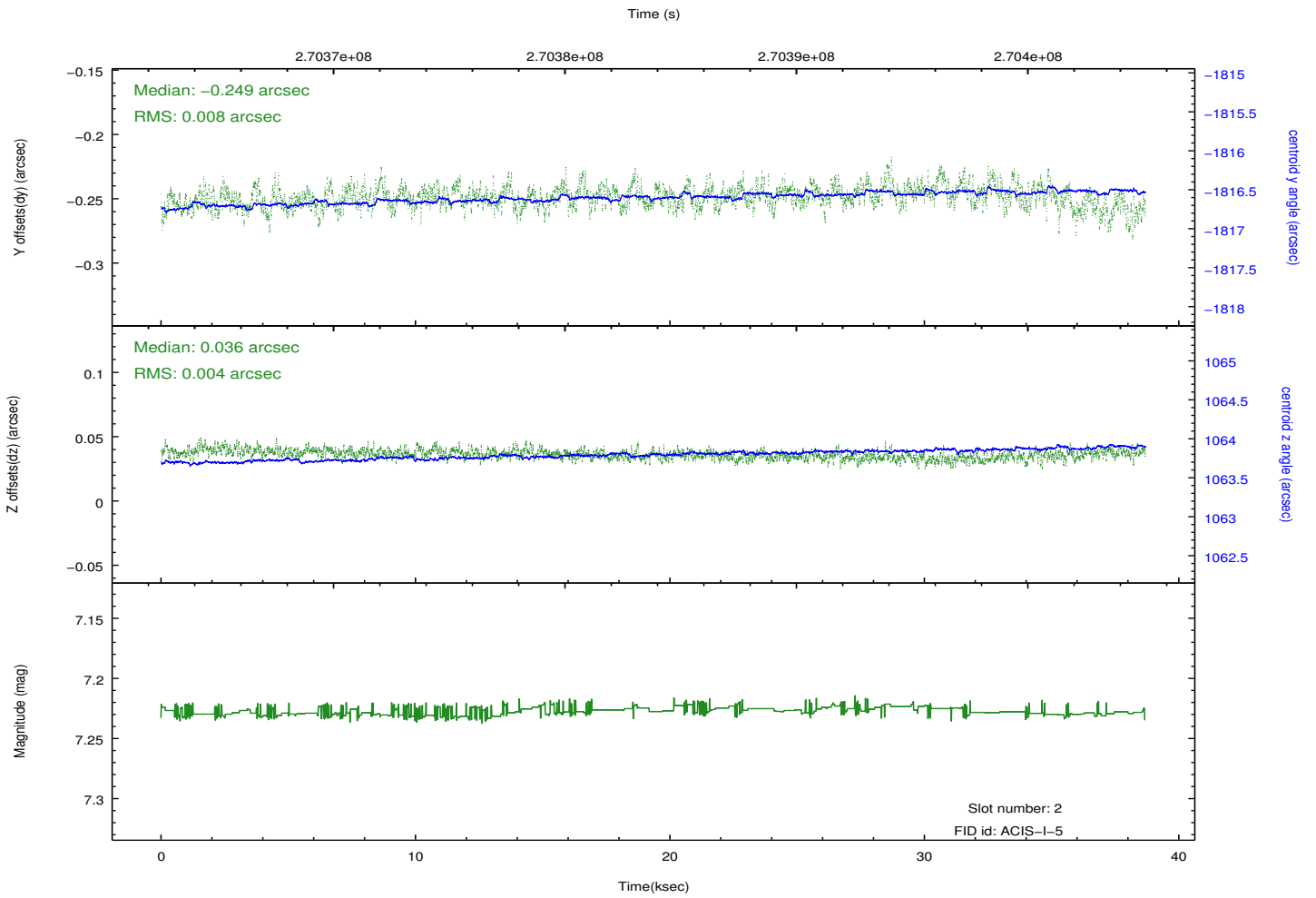
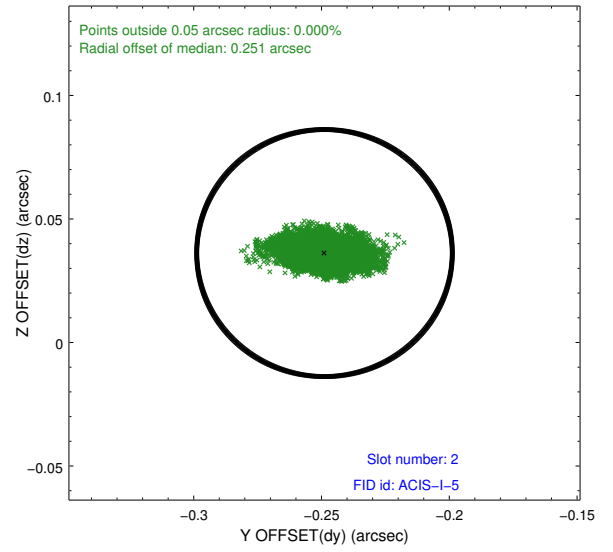
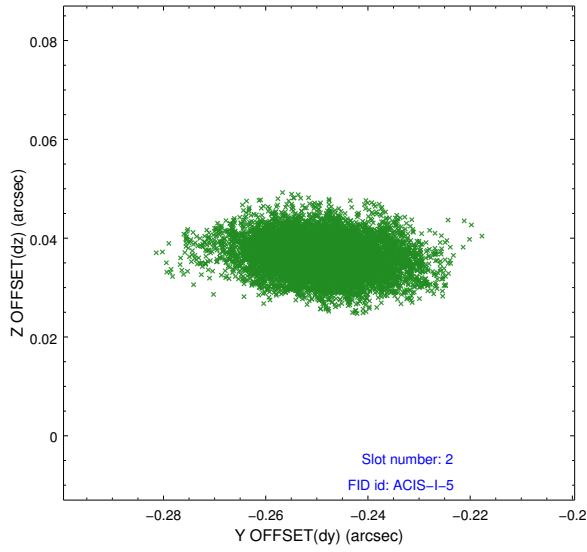
2.5.1 Slot 0



2.5.2 Slot 1



2.5.3 Slot 2



A Summary

A.1 Status

V&V Scientist	Jen Lauer
V&V Date (YYYY-MM-DD)	2012.04.06
V&V Edition	1
V&V Disposition and Status	OK
V&V Charge Time	38.2559998

A.2 Comments

Roll angle constraint of 283 +/- 15 degrees was met.