

V&V Reference Report

L2 ASCDS Version : 8.4.3

Observation 7059 - L2 Version 2
Chandra X-Ray Center

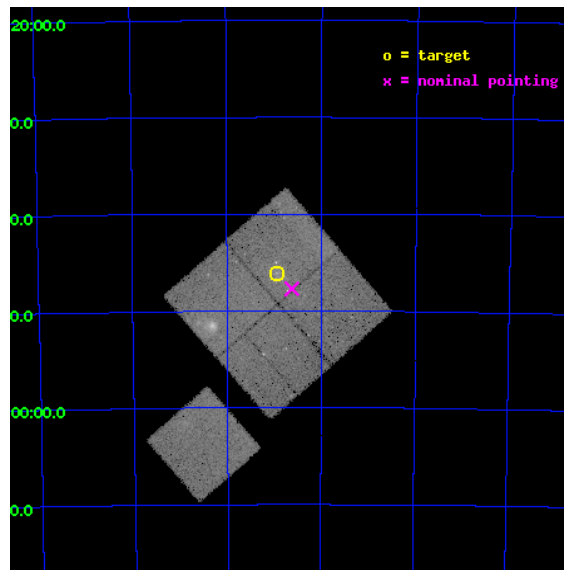
L2 Processing Date : Mar 20 2012

Contents

1	Front	2
2	OBI	3
2.1	OBI	3
2.1.1	Images	3
2.1.2	Bias	3
2.1.3	Parameters	4
2.1.4	Events	4
2.2	Compared Parameters	5
2.3	Aspect	6
2.4	Star Slots	9
2.4.1	Slot 3	9
2.4.2	Slot 4	10
2.4.3	Slot 5	11
2.4.4	Slot 6	12
2.4.5	Slot 7	13
2.5	FID Slots	14
2.5.1	Slot 0	14
2.5.2	Slot 1	15
2.5.3	Slot 2	16
A	Summary	17
A.1	Status	17
A.2	Comments	17

1 Front

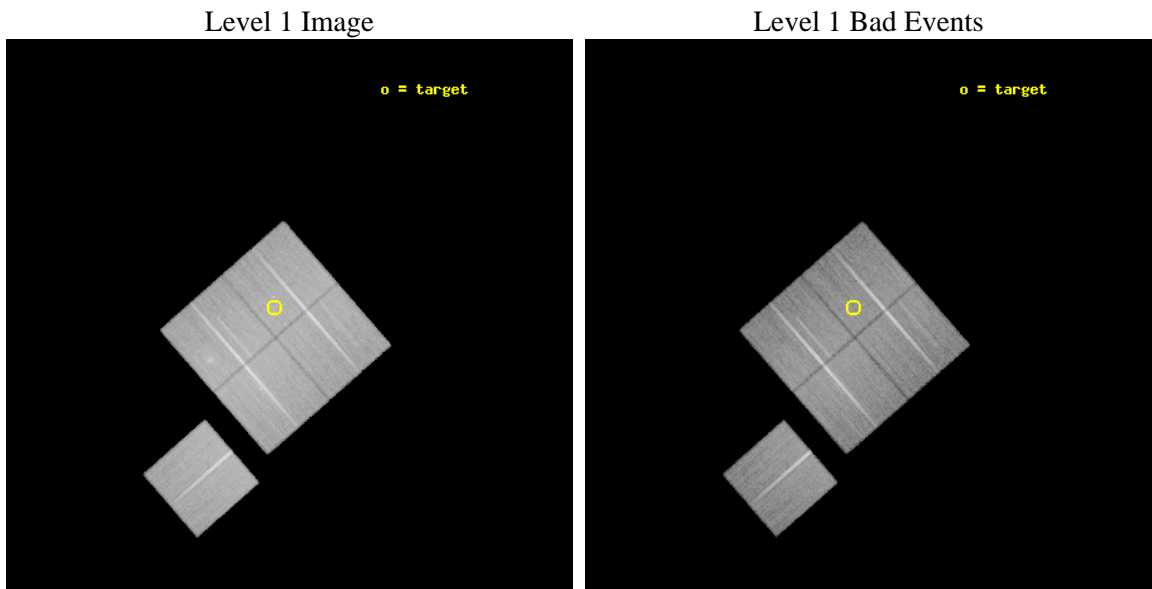
seq_num	600497	Sequence number
obs_id	7059	Observation id
title	Gas-Dynamics of a High Speed Encounter: The Interaction of NGC 6872 with the Pavo Group	Proposal title
observer	Dr. Marie Machacek	Principal investigator
object	NGC6872	Source name
dtcycle	0	
cycle	P	events from which exps? Prim/Second/Both
ra_targ	304.235417	Observer's specified target RA [deg]
dec_targ	-70.76825	Observer's specified target Dec [deg]
ra_nom	304.15583285513	Nominal RA [deg]
dec_nom	-70.79531259628	Nominal Dec [deg]
roll_nom	228.8335322522	Nominal Roll [deg]
revision	2	Processing version of data
ontime	41161.595089495	Sum of GTIs [s]
livetime	40623.788546925	Livetime [s]
ontime0	41167.876980066	Sum of GTIs [s]
ontime1	41161.595089495	Sum of GTIs [s]
ontime2	41171.017930418	Sum of GTIs [s]
ontime3	41174.158930629	Sum of GTIs [s]
ontime6	41171.017980278	Sum of GTIs [s]
l2events	131178	Number of level 2 events



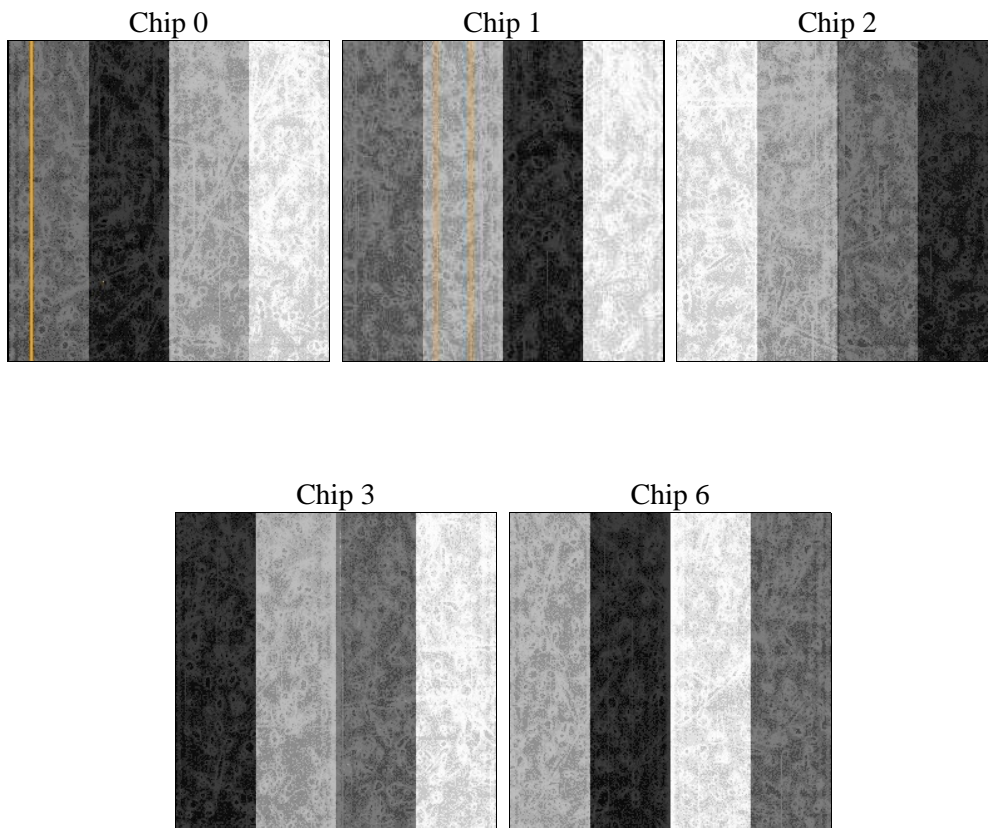
2 OBI

2.1 OBI

2.1.1 Images



2.1.2 Bias



2.1.3 Parameters

obi_num	0	Obi number	sched_exp_time	41000.000000	[s] Scheduled observation exposure time
ascdsver	8.4.3	Processing system revision	ontime	41161.595089495	Sum of GTIs [s]
caldbver	4.4.8	 	ontime0	41167.876980066	Sum of GTIs [s]
date	2012-03-20T03:47:36	Date and time of file creation	ontime1	41161.595089495	Sum of GTIs [s]
revision	2	Processing version of data	ontime2	41171.017930418	Sum of GTIs [s]
			ontime3	41174.158930629	Sum of GTIs [s]
			ontime6	41171.017980278	Sum of GTIs [s]
			l1events	1401656	Number of level 1 events

2.1.4 Events

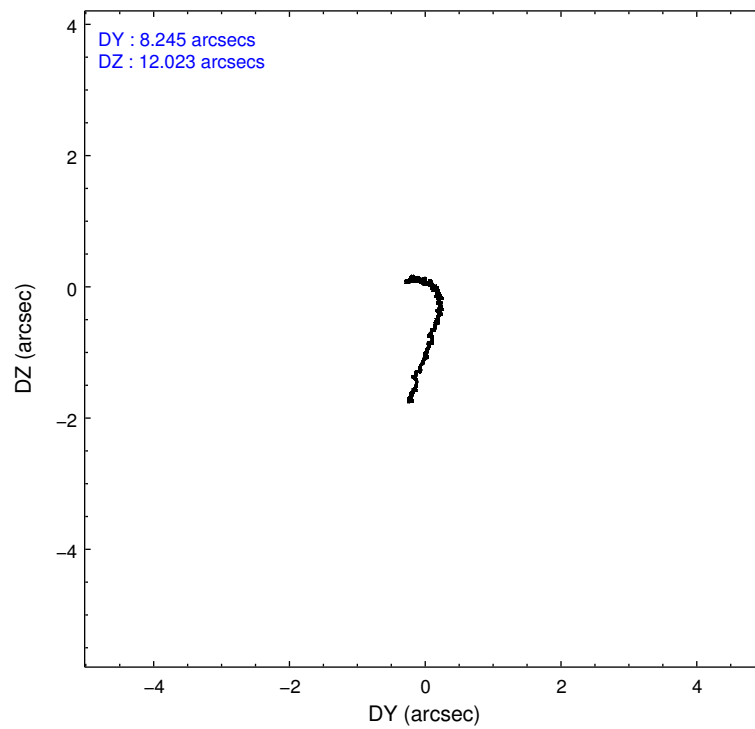
	ccd 0	ccd 1	ccd 2	ccd 3	ccd 6
level 1 events	268025	270567	297186	288624	277254
rejected events	239054	234682	268142	255174	248055
rejected %	89%	86%	90%	88%	89%

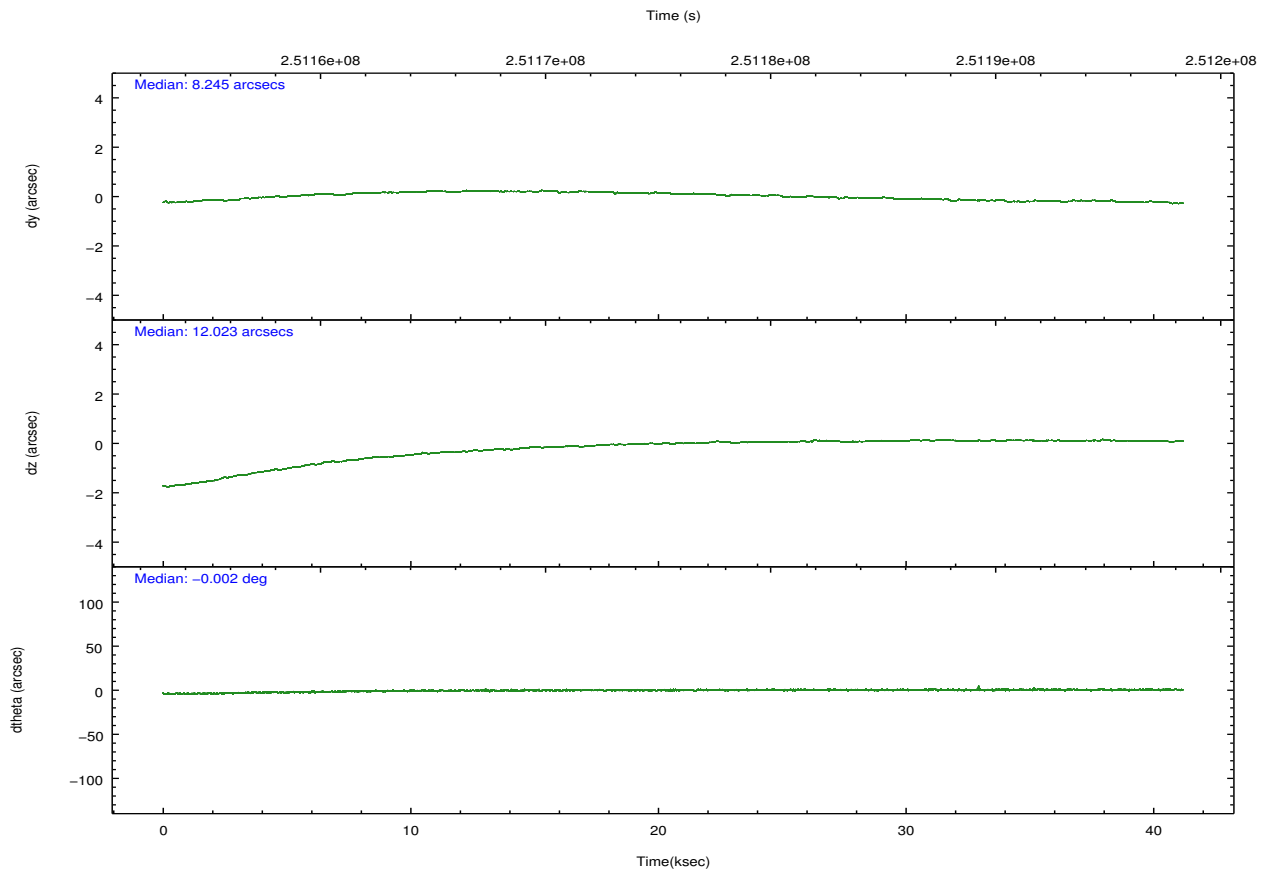
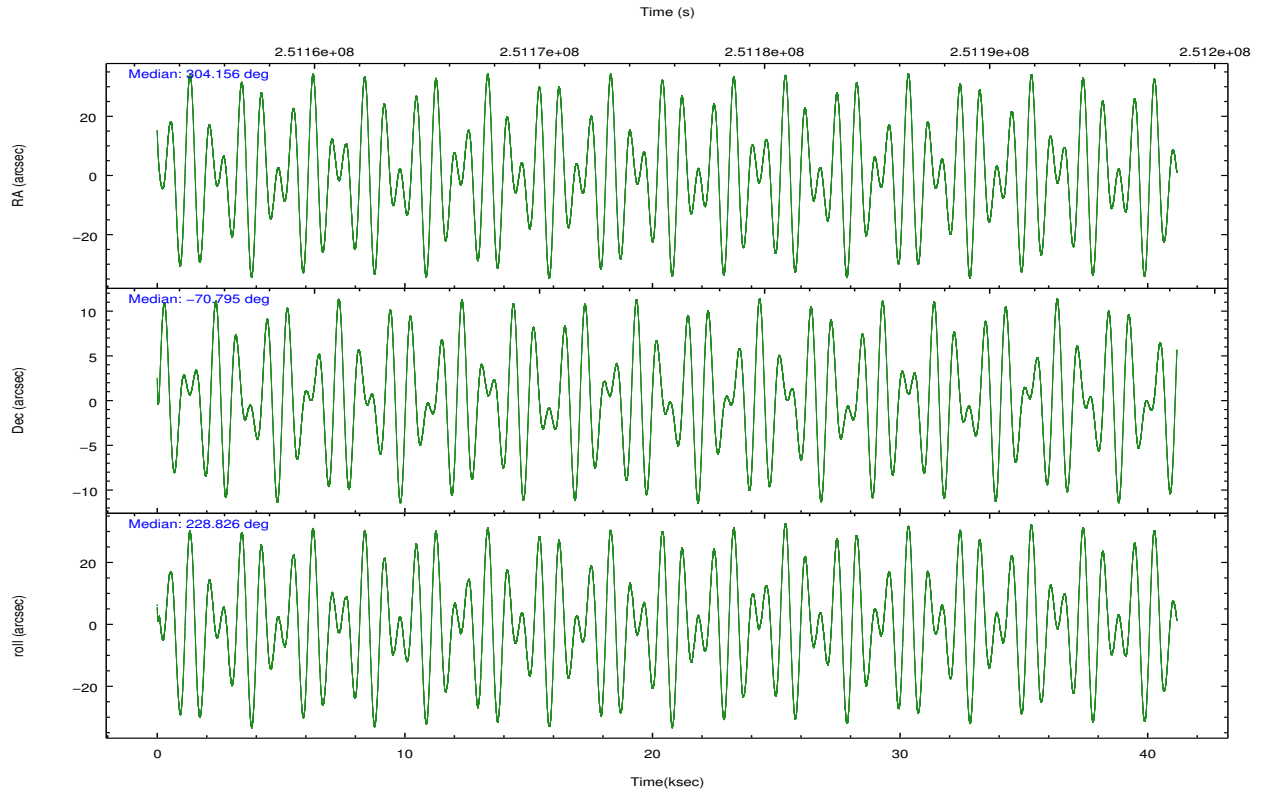
	ccd 0	ccd 1	ccd 2	ccd 3	ccd 6
grade 0 events	10733	14889	11518	15688	10699
	4%	5%	3%	5%	3%
grade 1 events	137	151	162	167	105
	0%	0%	0%	0%	0%
grade 2 events	6842	7376	6562	6271	6075
	2%	2%	2%	2%	2%
grade 3 events	3224	3606	2983	3171	3168
	1%	1%	1%	1%	1%
grade 4 events	2979	3543	2979	3194	3245
	1%	1%	1%	1%	1%
grade 5 events	9424	10820	8826	11274	11148
	3%	3%	2%	3%	4%
grade 6 events	5280	6565	5085	5203	6072
	1%	2%	1%	1%	2%
grade 7 events	229406	223617	259071	243656	236742
	85%	82%	87%	84%	85%

2.2 Compared Parameters

Parameter	Planned	Actual	Parameter	Planned	Actual
Instrument	ACIS	ACIS	Obspar format version number	7	7
Detector	ACIS-01236	ACIS-01236	Obspar file type	PREDICTED	ACTUAL
Grating	NONE	NONE	Obspar update status	NONE	UPDATED
Data mode	VFAINT	VFAINT	Number of optional ACIS chips dropped	0	0
Observation mode	POINTING	POINTING	On-chip summing requested	N	N
[deg] Pointing RA	304.171632	304.1558328551314	Subarray requested	NONE	NONE
[deg] Pointing Dec	-70.768408	-70.79531259628024	Alternating exposures requested	N	N
[deg] Pointing Roll	228.639773	228.8335322522011	[s] Primary exposure time	0.000000	3.1
[mm] SIM focus pos	-0.782348	-0.7809083437167272			
[mm] SIM defocus	0	0.001439871863259334			
[mm] SIM translation stage pos	-241.592463	-241.5930143809957			
[mm] SIM translation stage offset	8	8.000561378066038			
[s] Observation start time (MET)	251155252.184000	251154150.68046			
Observation start date	2005-12-16T21:19:48	2005-12-16T21:02:30			
[s] Observation end time (MET)	251196252.184000	251197162.75745			
Observation end date	2005-12-17T08:43:08	2005-12-17T08:59:22			
Read mode	TIMED	TIMED			

2.3 Aspect



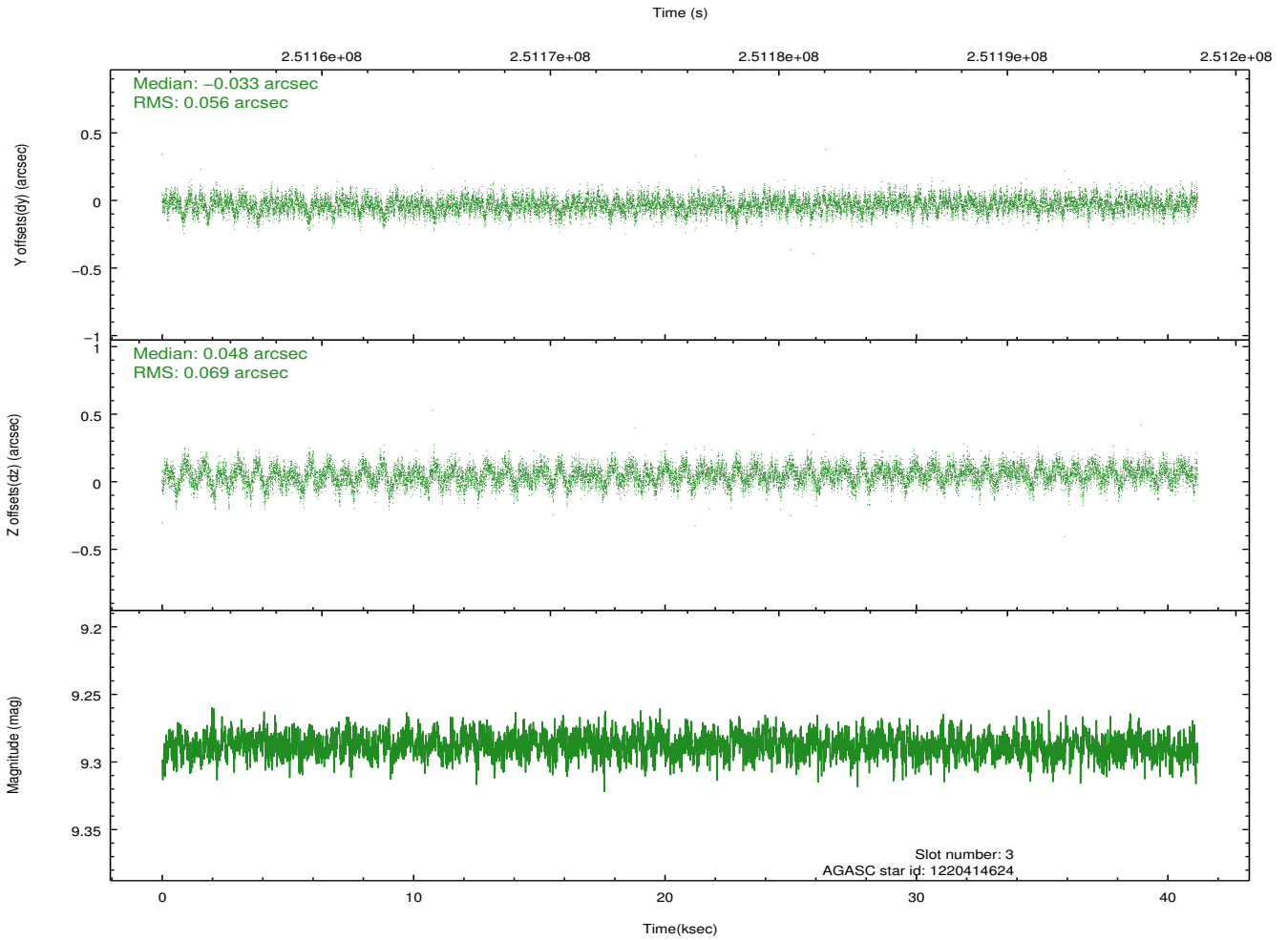
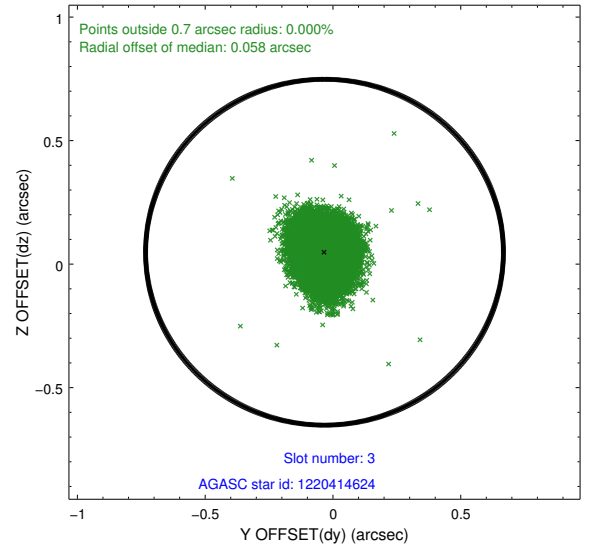
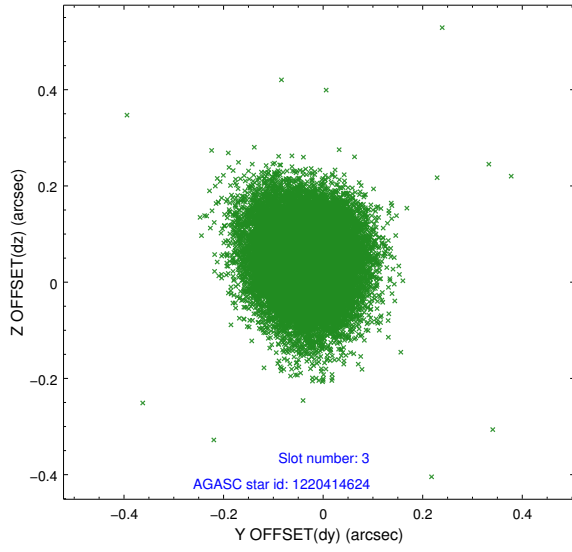


Slot Statistics

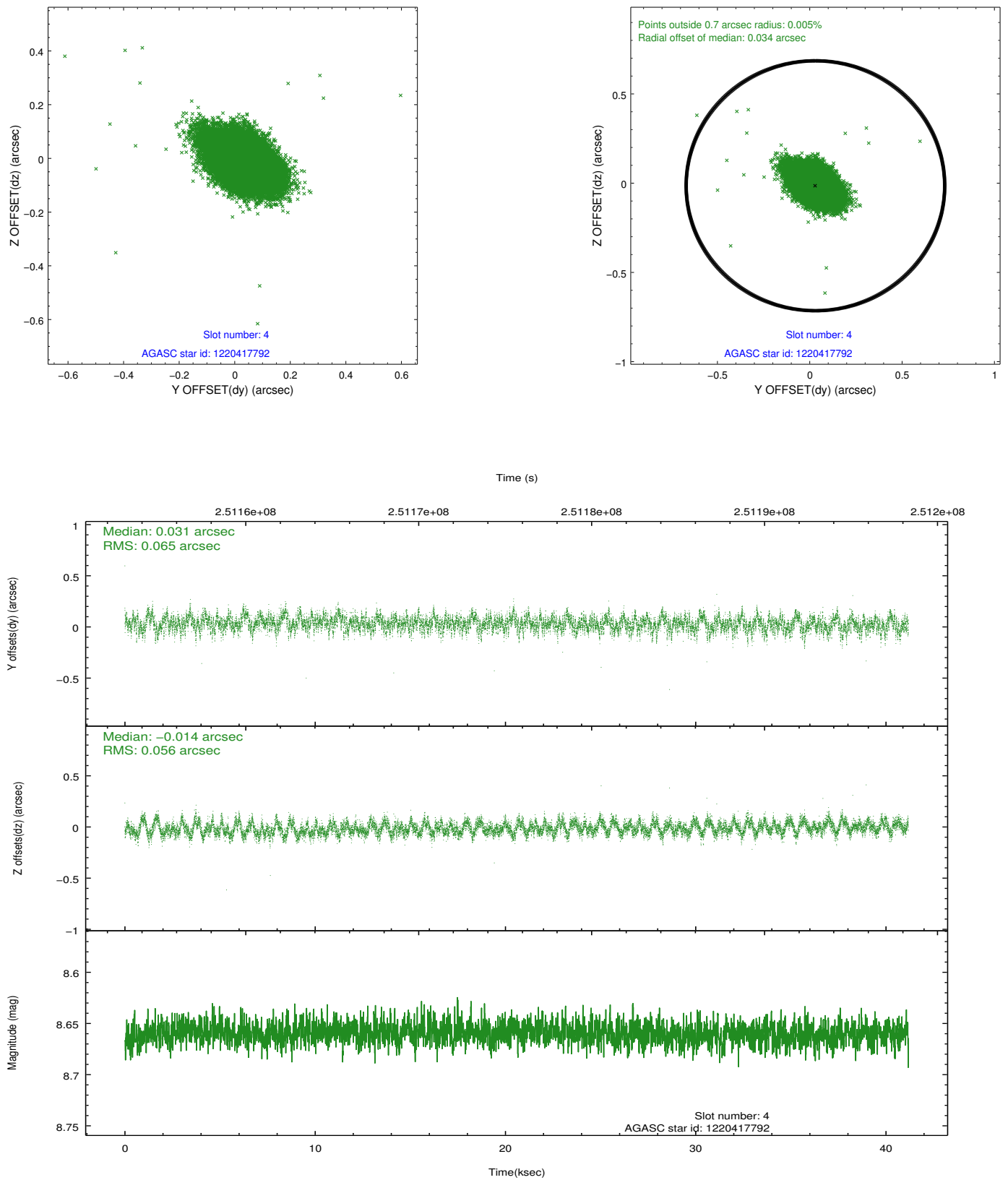
slot	status	id	mag	n_pts	med_dy	med_dz	dr1	dr2	ra	dec	mean_y	mean_z
0	FID	ACIS-I-1	7.28	10044	-0.005	0.007	0.012	0.046	0.000000	0.000000	931.55	-670.81
1	FID	ACIS-I-5	7.24	10044	-0.098	0.030	0.009	0.017	0.000000	0.000000	-1816.66	1226.68
2	FID	ACIS-I-6	7.23	10045	0.012	0.033	0.012	0.031	0.000000	0.000000	397.08	1871.21
3	GUIDE	1220414624	9.29	20076	-0.033	0.048	0.095	0.152	304.430463	-70.145362	-1891.73	-1244.01
4	GUIDE	1220417792	8.66	20083	0.031	-0.014	0.089	0.151	301.715364	-70.796240	2041.34	-2076.72
5	GUIDE	1220415312	9.66	20077	-0.095	0.067	0.123	0.199	305.075864	-71.229088	558.78	1887.45
6	GUIDE	1220547248	9.81	20060	-0.007	-0.079	0.163	0.260	306.006962	-71.080661	-547.47	2372.60
7	GUIDE	1220552432	9.66	20047	0.097	-0.030	0.223	0.343	306.817733	-70.729720	-2129.90	2312.36

2.4 Star Slots

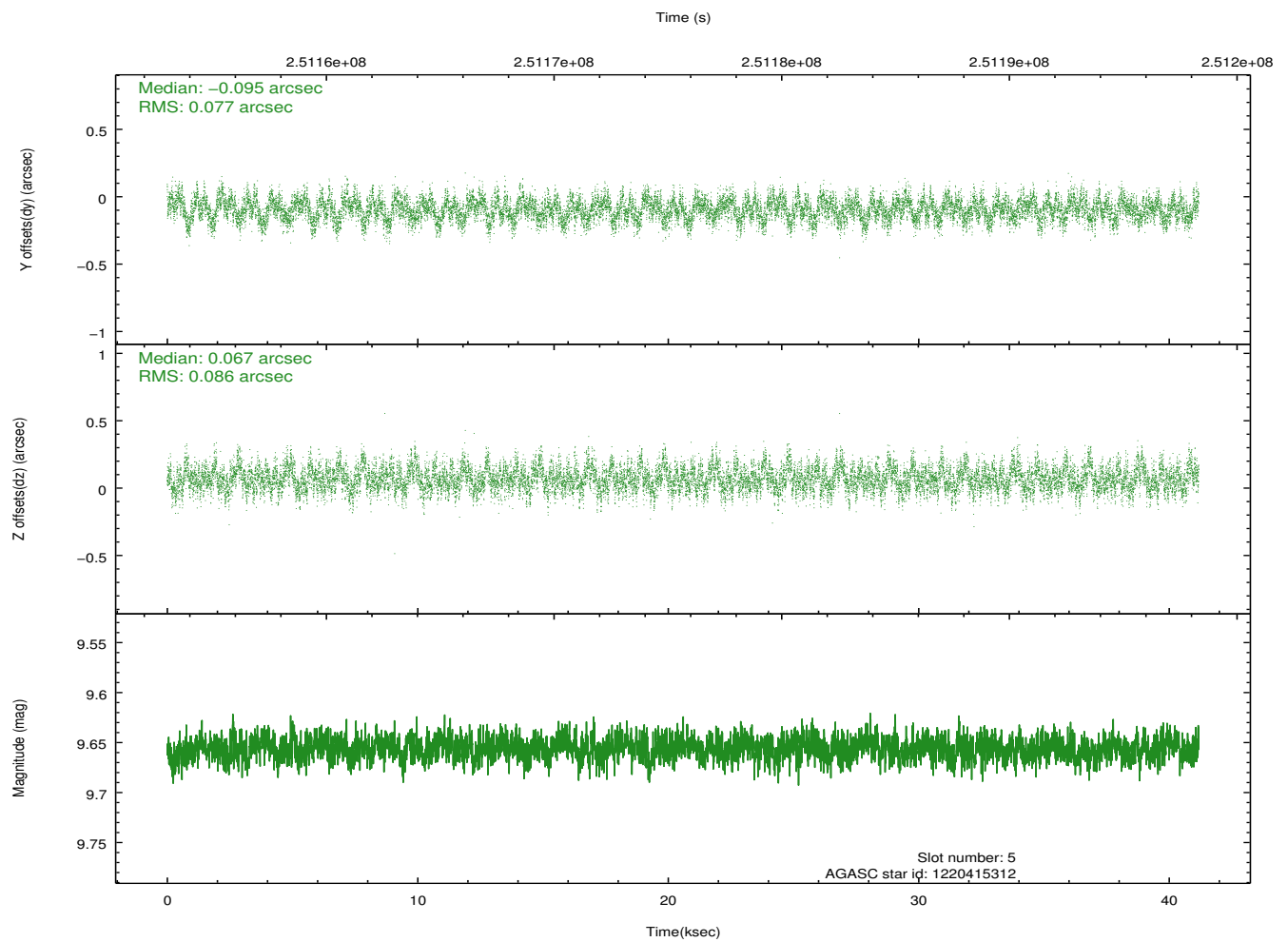
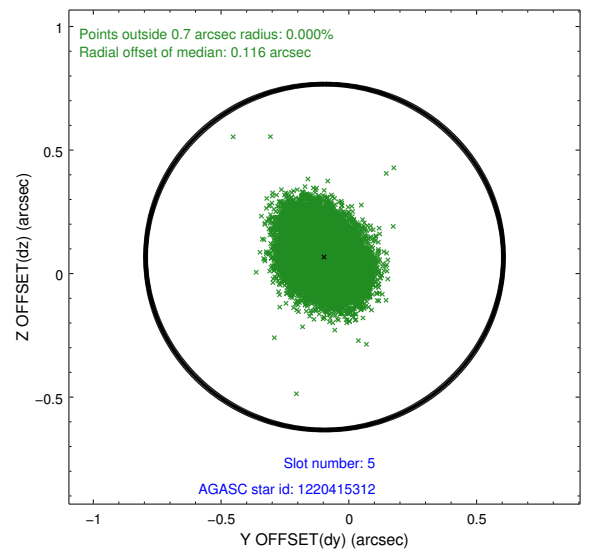
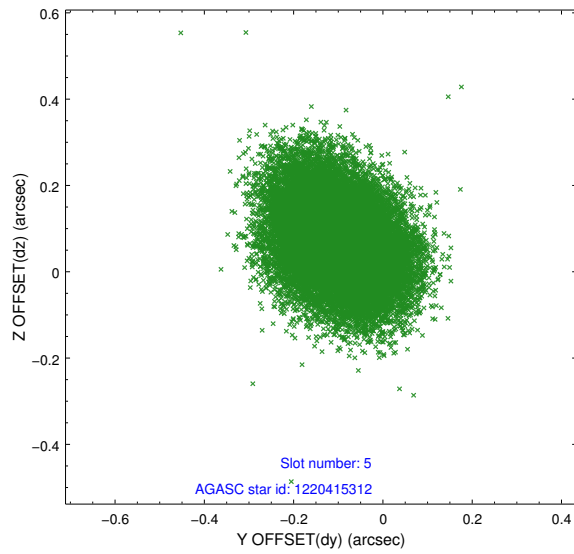
2.4.1 Slot 3



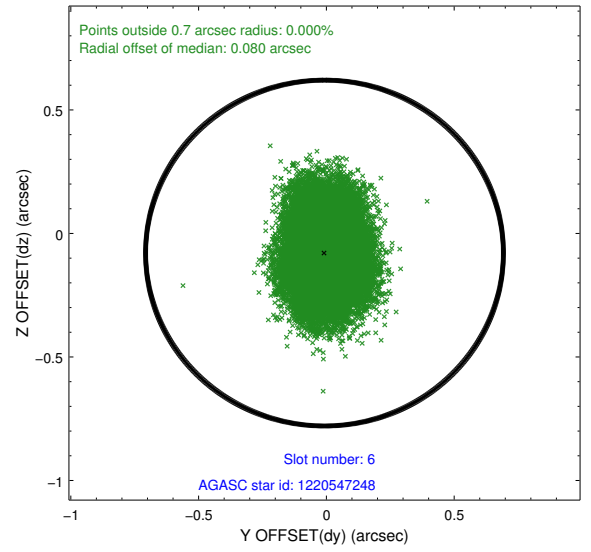
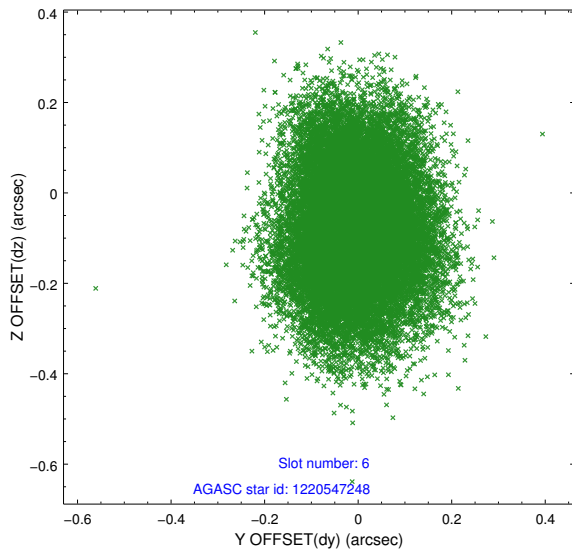
2.4.2 Slot 4



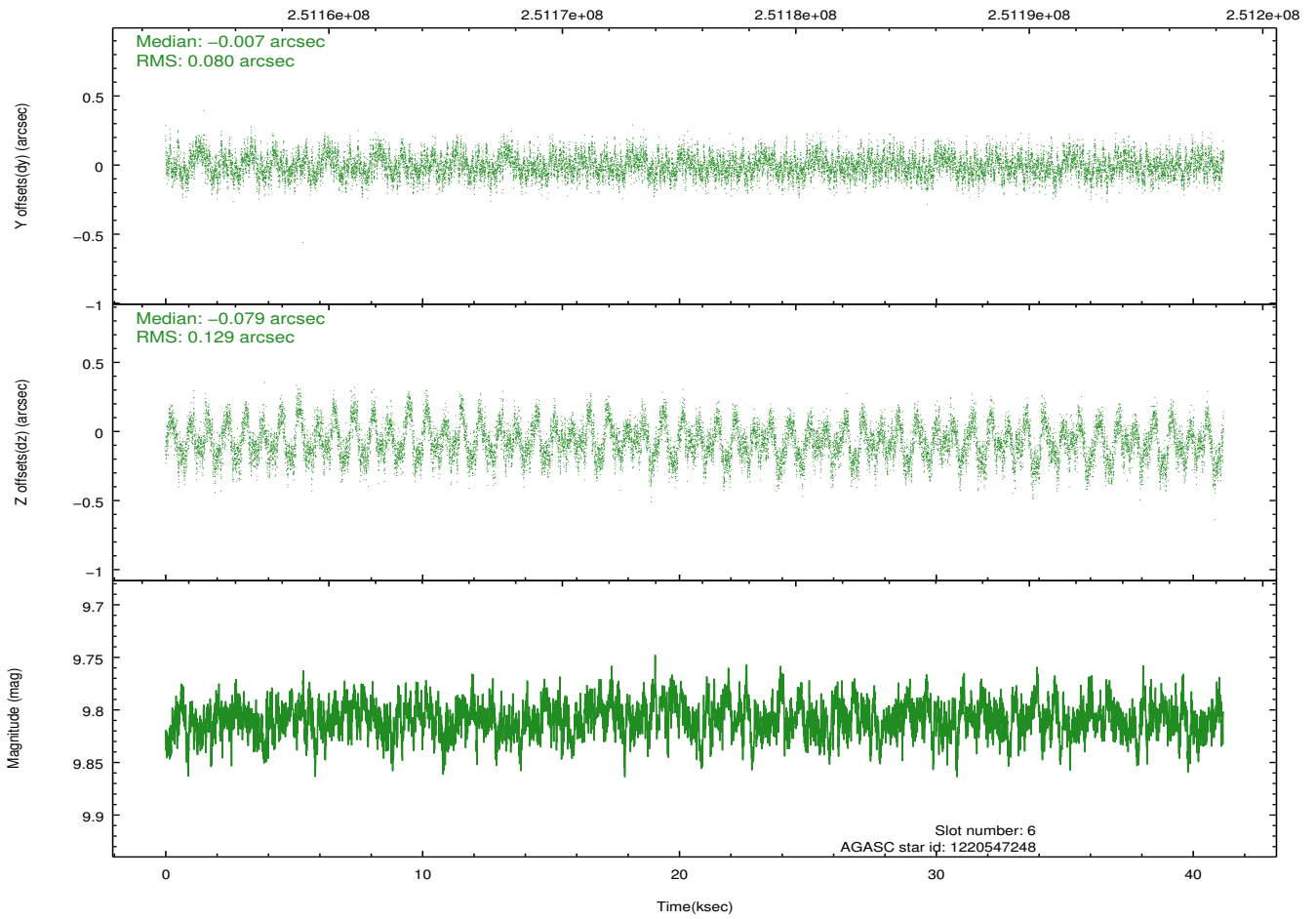
2.4.3 Slot 5



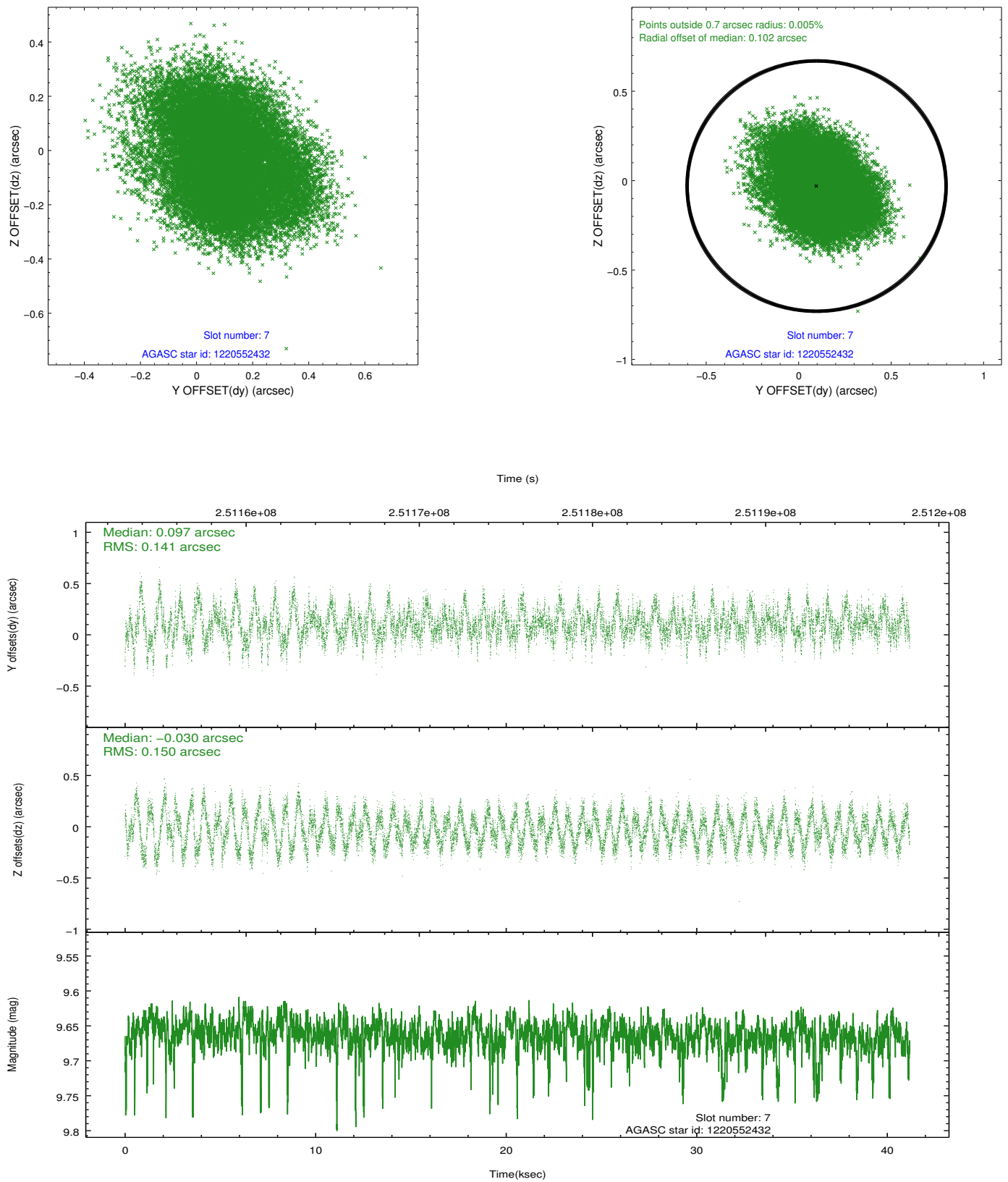
2.4.4 Slot 6



Time (s)

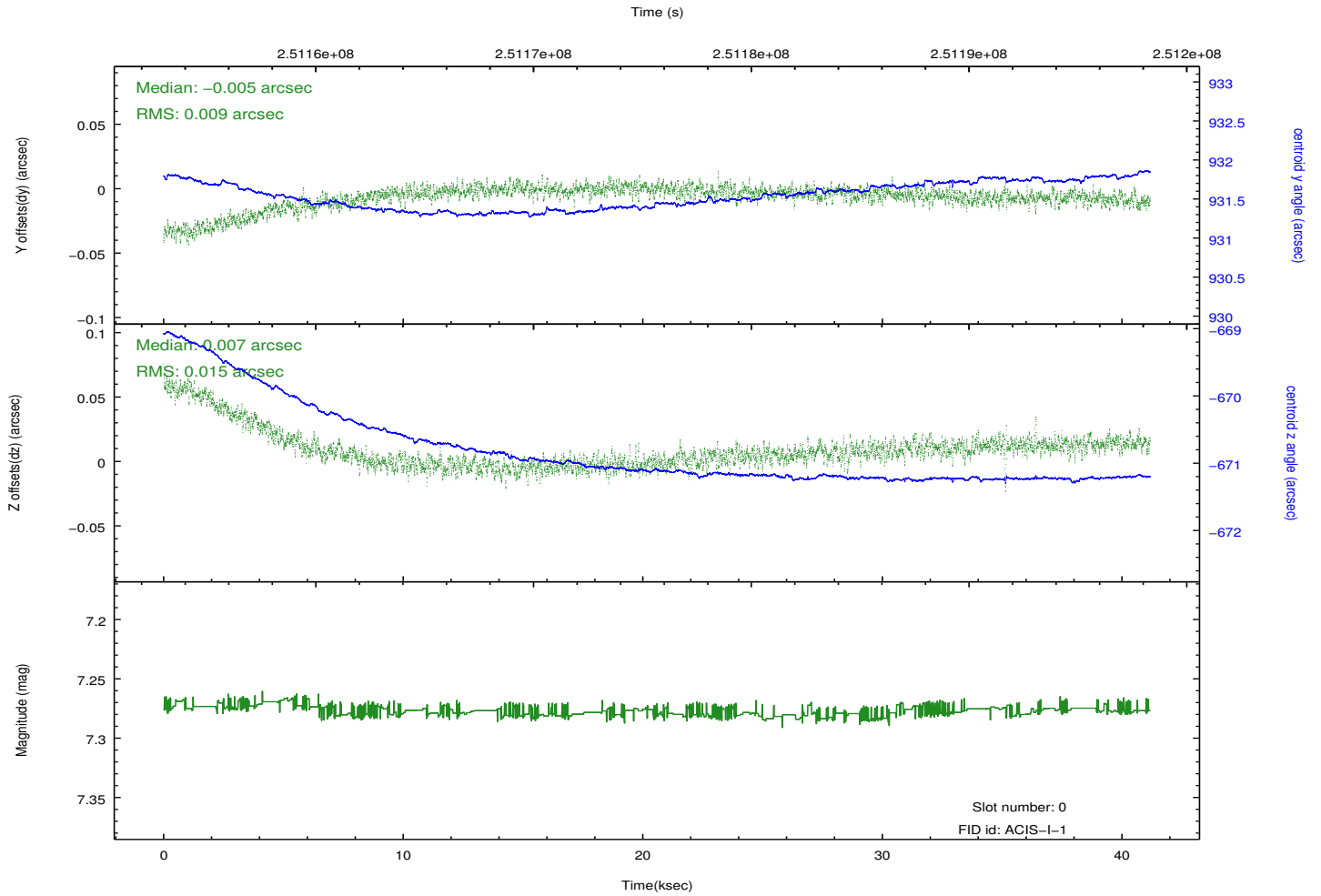
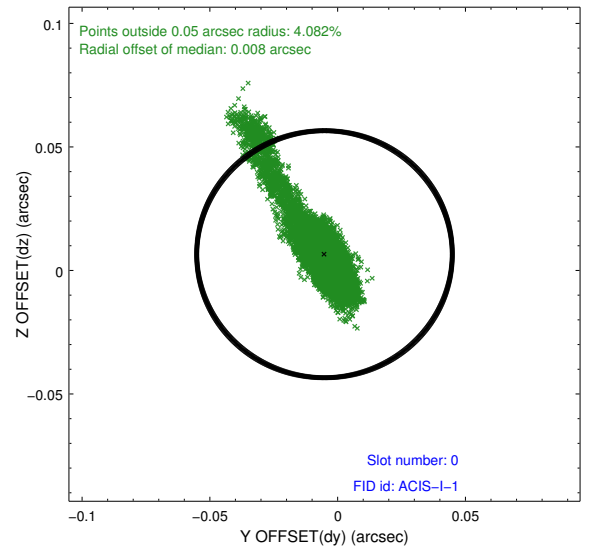
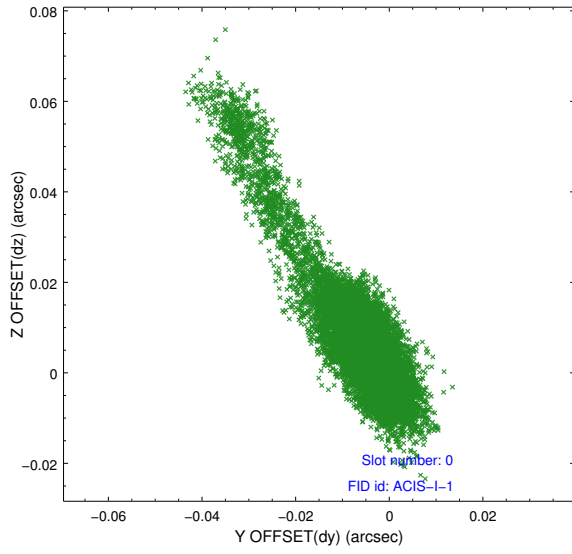


2.4.5 Slot 7

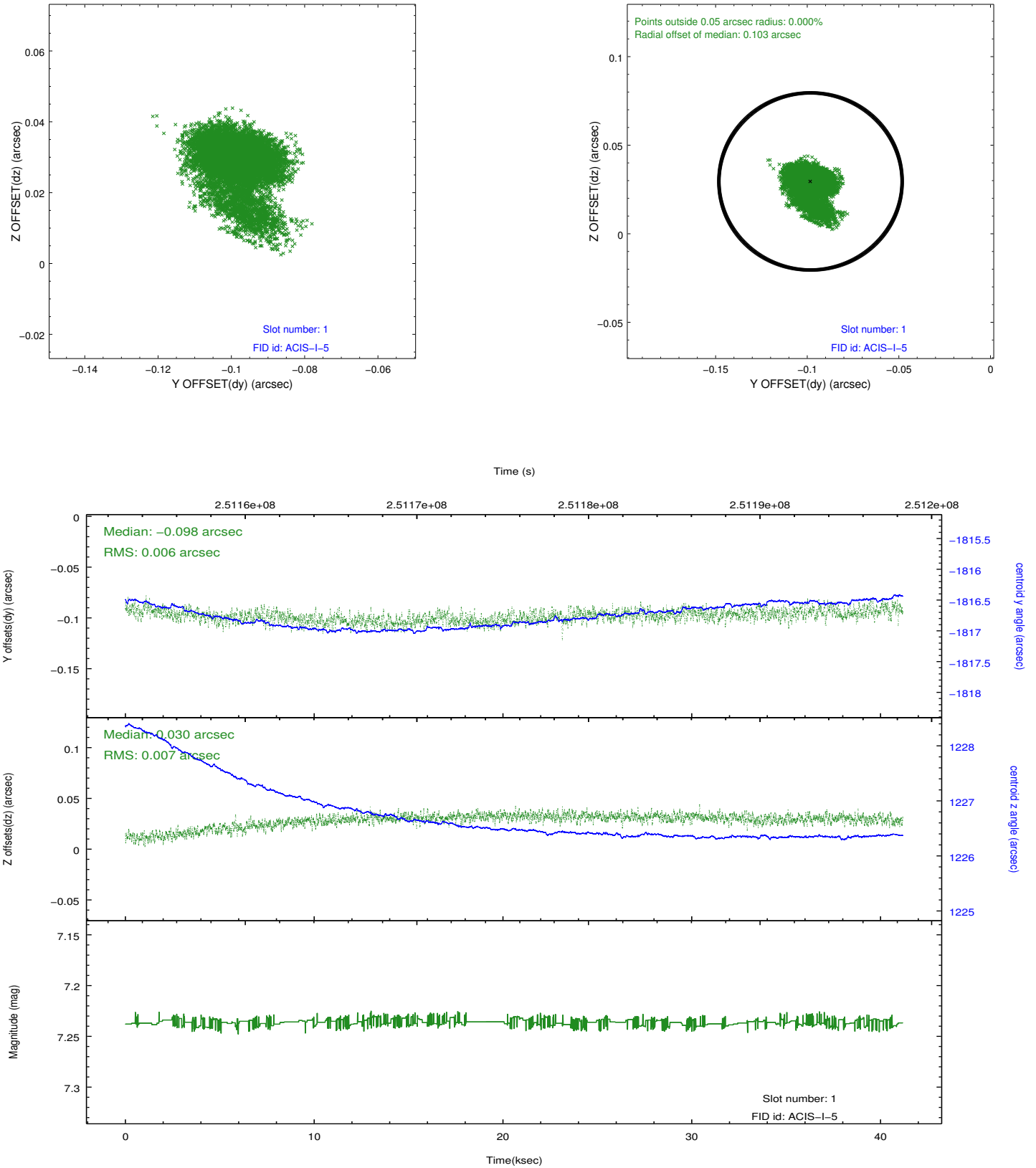


2.5 FID Slots

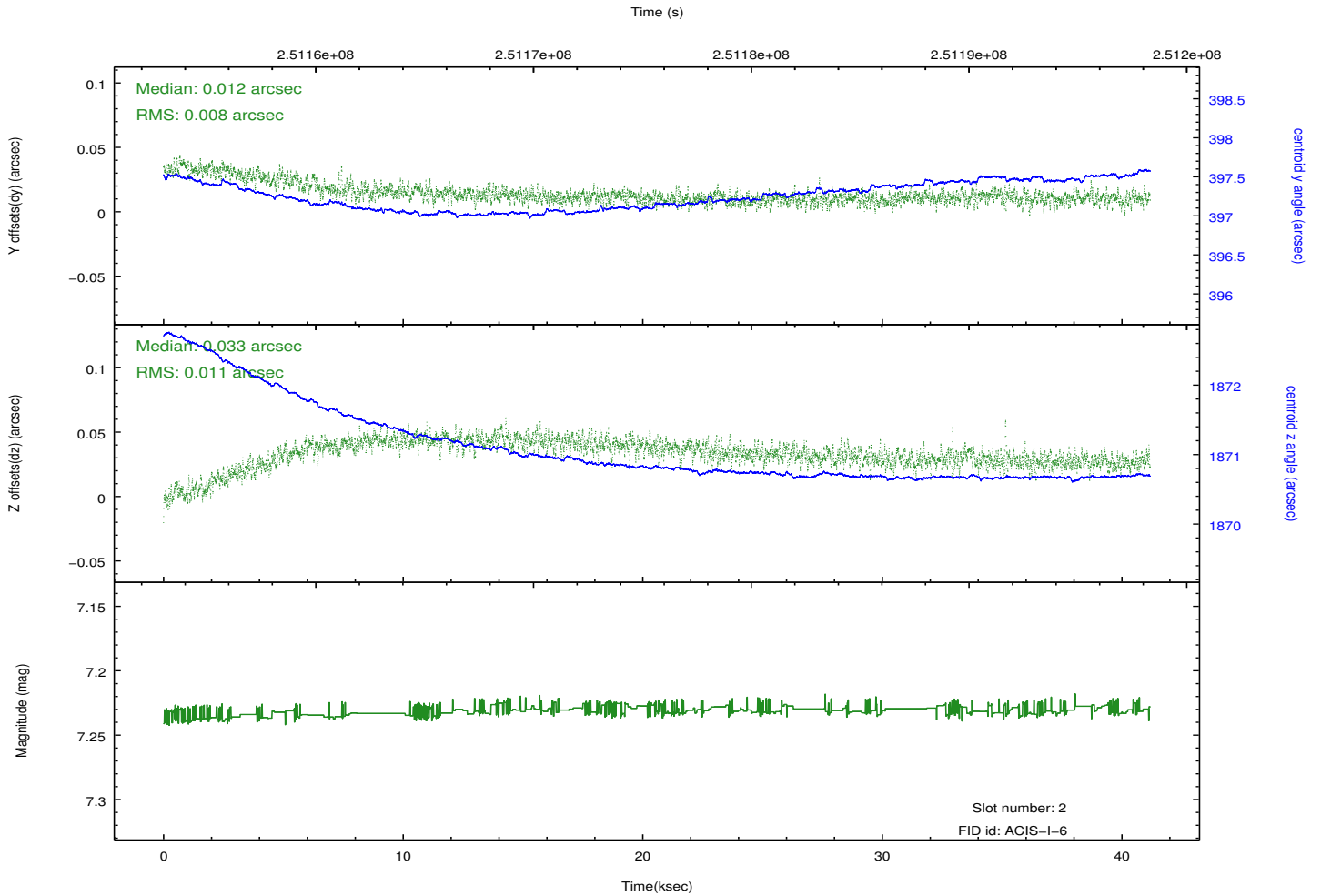
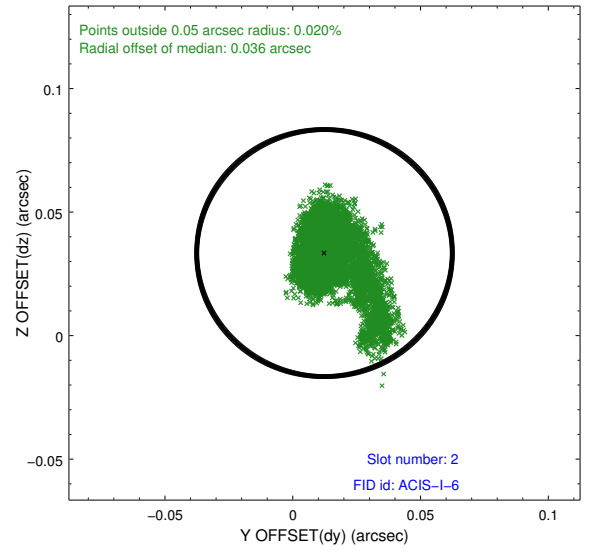
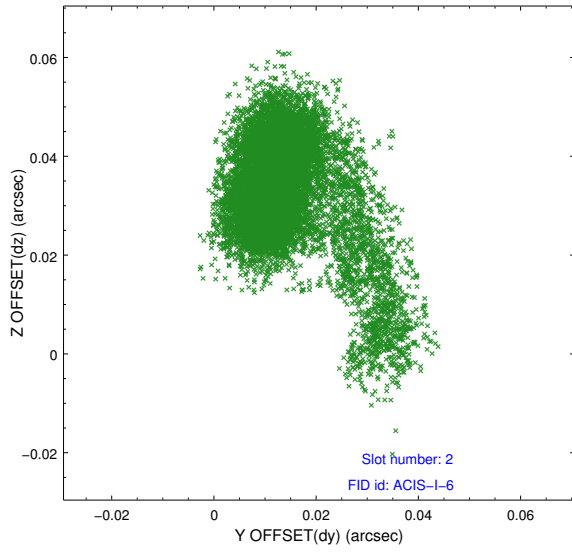
2.5.1 Slot 0



2.5.2 Slot 1



2.5.3 Slot 2



A Summary

A.1 Status

V&V Scientist	Jen Lauer
V&V Date (YYYY-MM-DD)	2012.03.20
V&V Edition	1
V&V Disposition and Status	OK
V&V Charge Time	41.16159

A.2 Comments