

V&V Reference Report

L2 ASCDS Version : 8.4.3

Observation 7169 - L2 Version 2
Chandra X-Ray Center

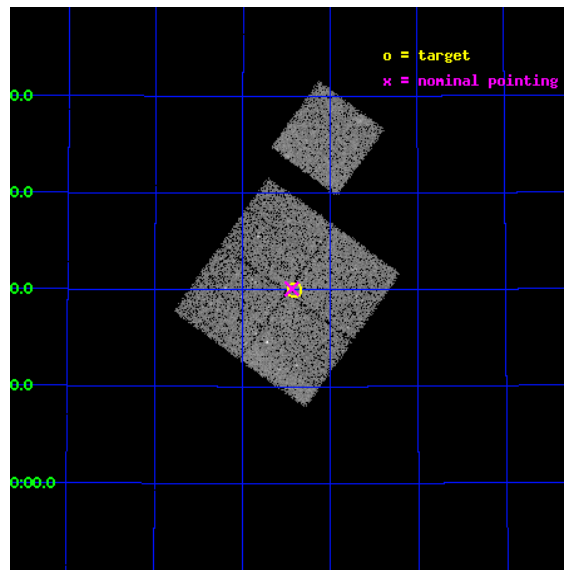
L2 Processing Date : Mar 18 2012

Contents

1	Front	2
2	OBI	3
2.1	OBI	3
2.1.1	Images	3
2.1.2	Bias	3
2.1.3	Parameters	4
2.1.4	Events	4
2.2	Compared Parameters	5
2.3	Aspect	6
2.4	Star Slots	9
2.4.1	Slot 3	9
2.4.2	Slot 4	10
2.4.3	Slot 5	11
2.4.4	Slot 6	12
2.4.5	Slot 7	13
2.5	FID Slots	14
2.5.1	Slot 0	14
2.5.2	Slot 1	15
2.5.3	Slot 2	16
A	Summary	17
A.1	Status	17
A.2	Comments	17

1 Front

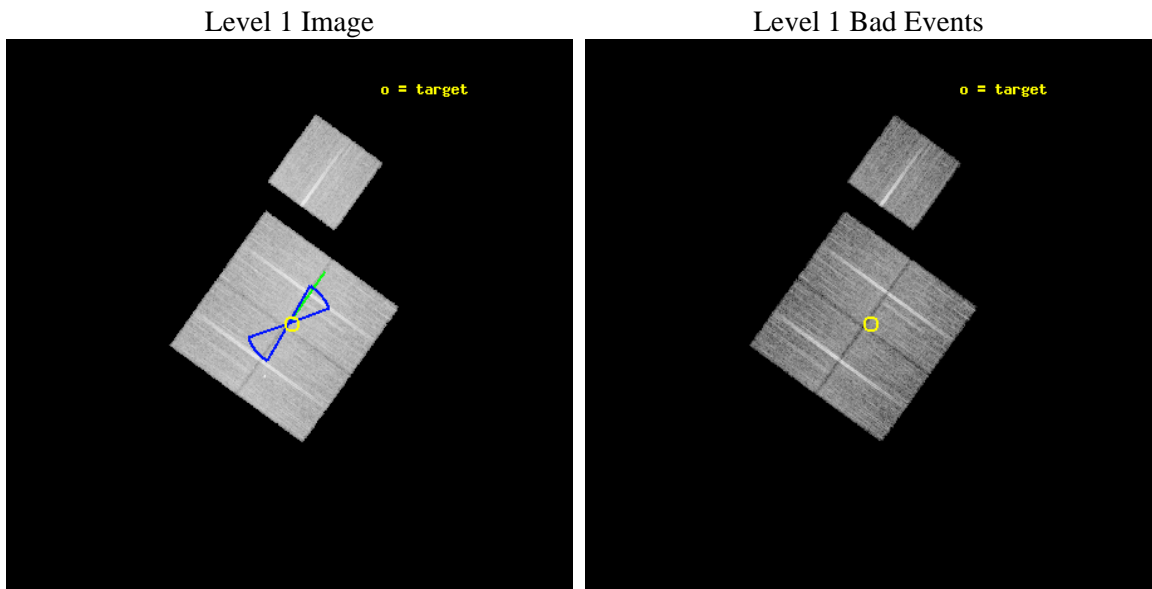
seq_num	900353	Sequence number
obs_id	7169	Observation id
title	Deep Chandra Imaging of the Extended Groth Strip: The Co-evolution of Black Holes and Galaxies	Proposal title
observer	Prof Kirpal Nandra	Principal investigator
object	EGS-6	Source name
dtcycle	0	
cycle	P	events from which exps? Prim/Second/Both
ra_targ	214.102079	Observer's specified target RA [deg]
dec_targ	52.334053	Observer's specified target Dec [deg]
ra_nom	214.10954651781	Nominal RA [deg]
dec_nom	52.335107022891	Nominal Dec [deg]
roll_nom	35.747763630384	Nominal Roll [deg]
revision	2	Processing version of data
ontime	16243.958998501	Sum of GTIs [s]
livetime	16031.719715557	Livetime [s]
ontime0	16243.959008455	Sum of GTIs [s]
ontime1	16247.099968731	Sum of GTIs [s]
ontime2	16247.099968731	Sum of GTIs [s]
ontime3	16243.958998501	Sum of GTIs [s]
ontime6	16247.099968731	Sum of GTIs [s]
l2events	46180	Number of level 2 events



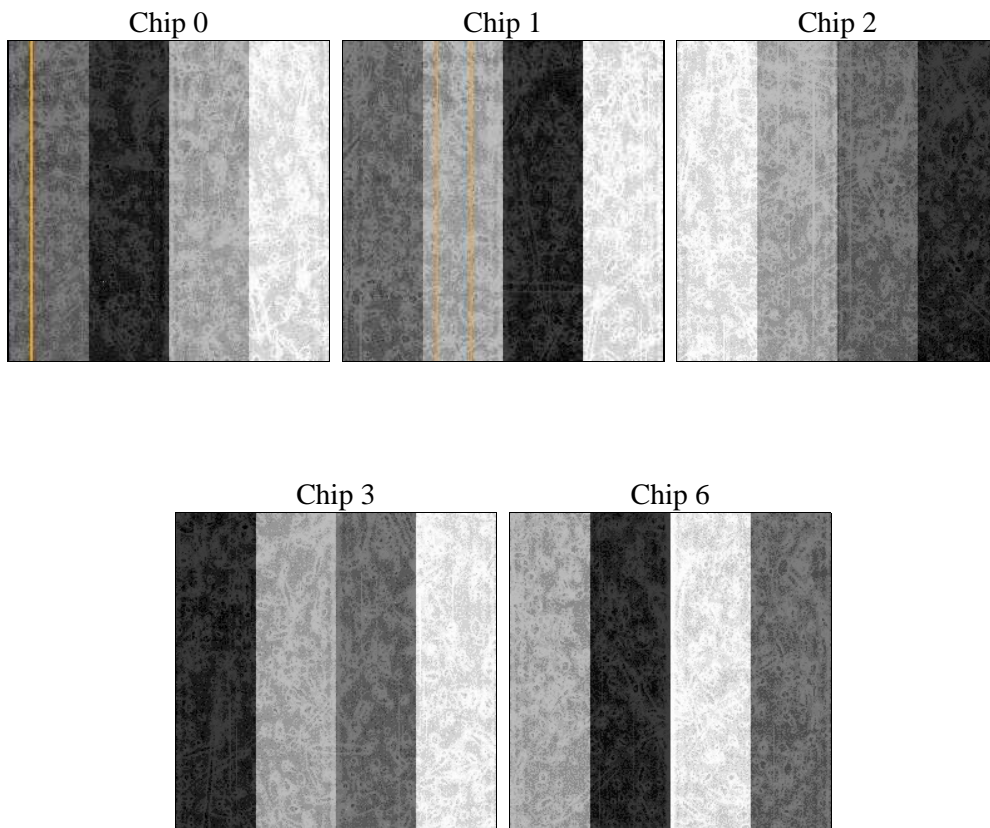
2 OBI

2.1 OBI

2.1.1 Images



2.1.2 Bias



2.1.3 Parameters

obi_num	0	Obi number	sched_exp_time	16100.000000	[s] Scheduled observation exposure time
ascdsver	8.4.3	Processing system revision	ontime	16243.958998501	Sum of GTIs [s]
caldbver	4.4.8	 	ontime0	16243.959008455	Sum of GTIs [s]
date	2012-03-18T09:15:11	Date and time of file creation	ontime1	16247.099968731	Sum of GTIs [s]
revision	2	Processing version of data	ontime2	16247.099968731	Sum of GTIs [s]
			ontime3	16243.958998501	Sum of GTIs [s]
			ontime6	16247.099968731	Sum of GTIs [s]
			l1events	548752	Number of level 1 events

2.1.4 Events

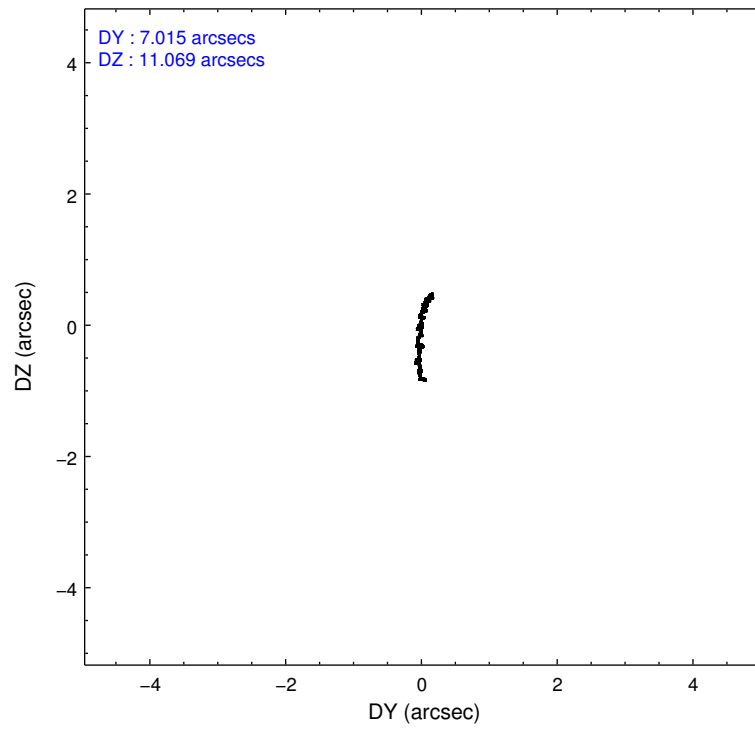
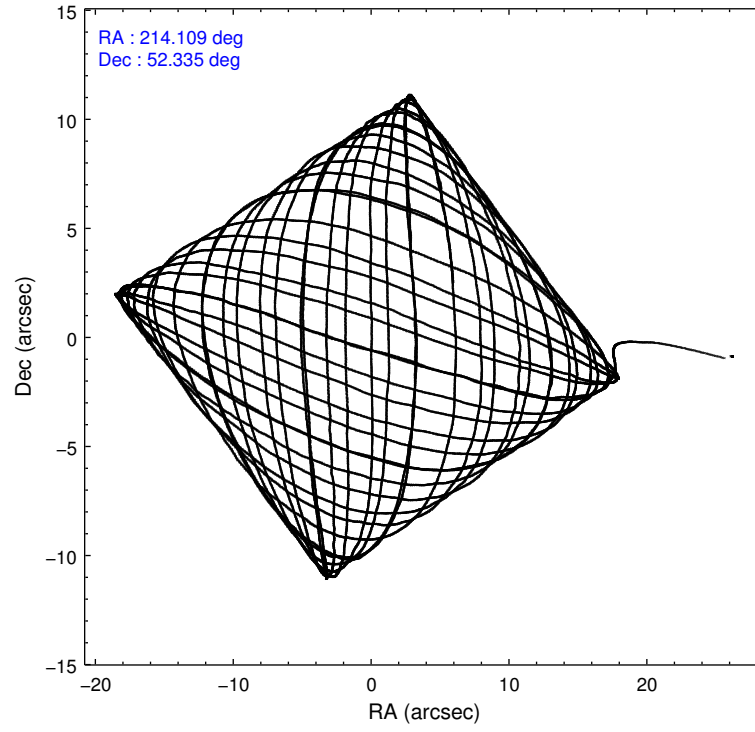
	ccd 0	ccd 1	ccd 2	ccd 3	ccd 6
level 1 events	106012	105280	114815	111911	110734
rejected events	94999	92768	104061	101624	99496
rejected %	89%	88%	90%	90%	89%

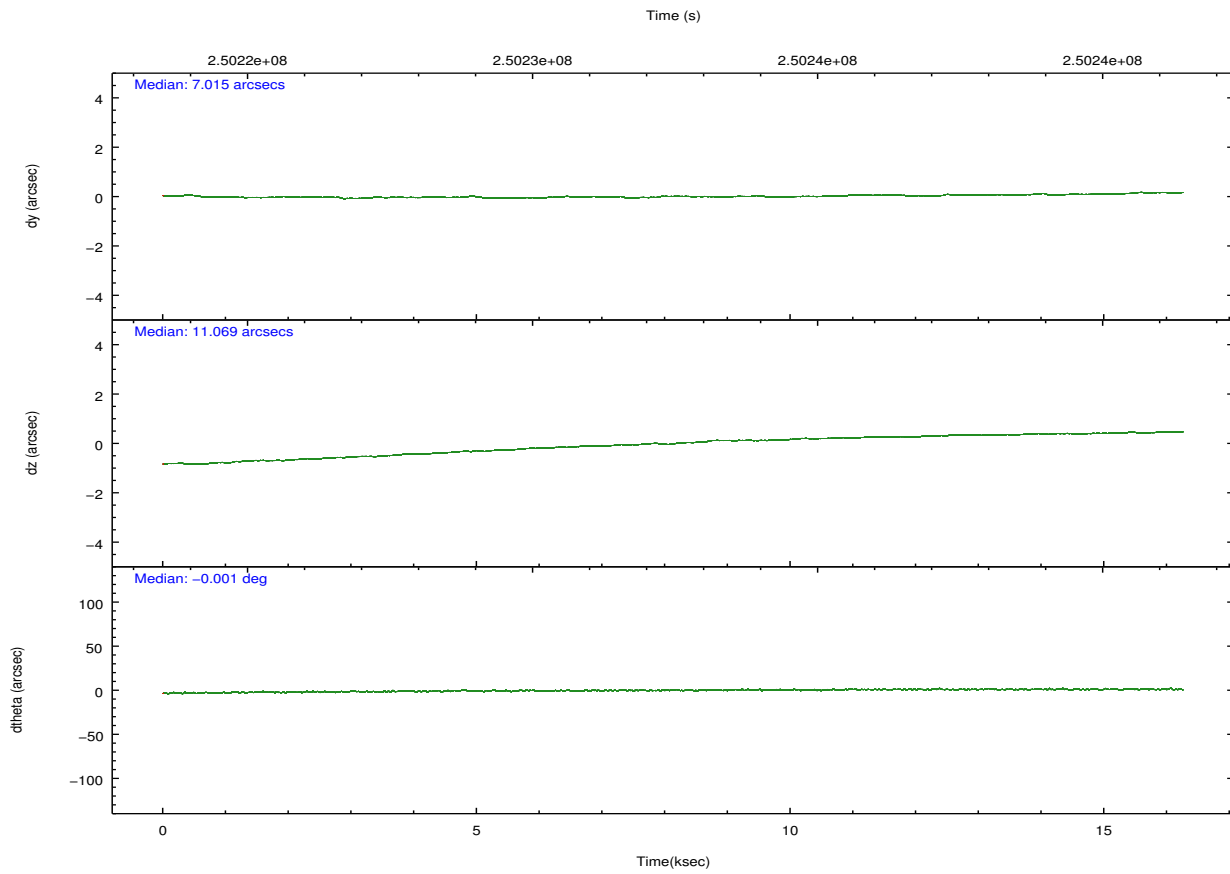
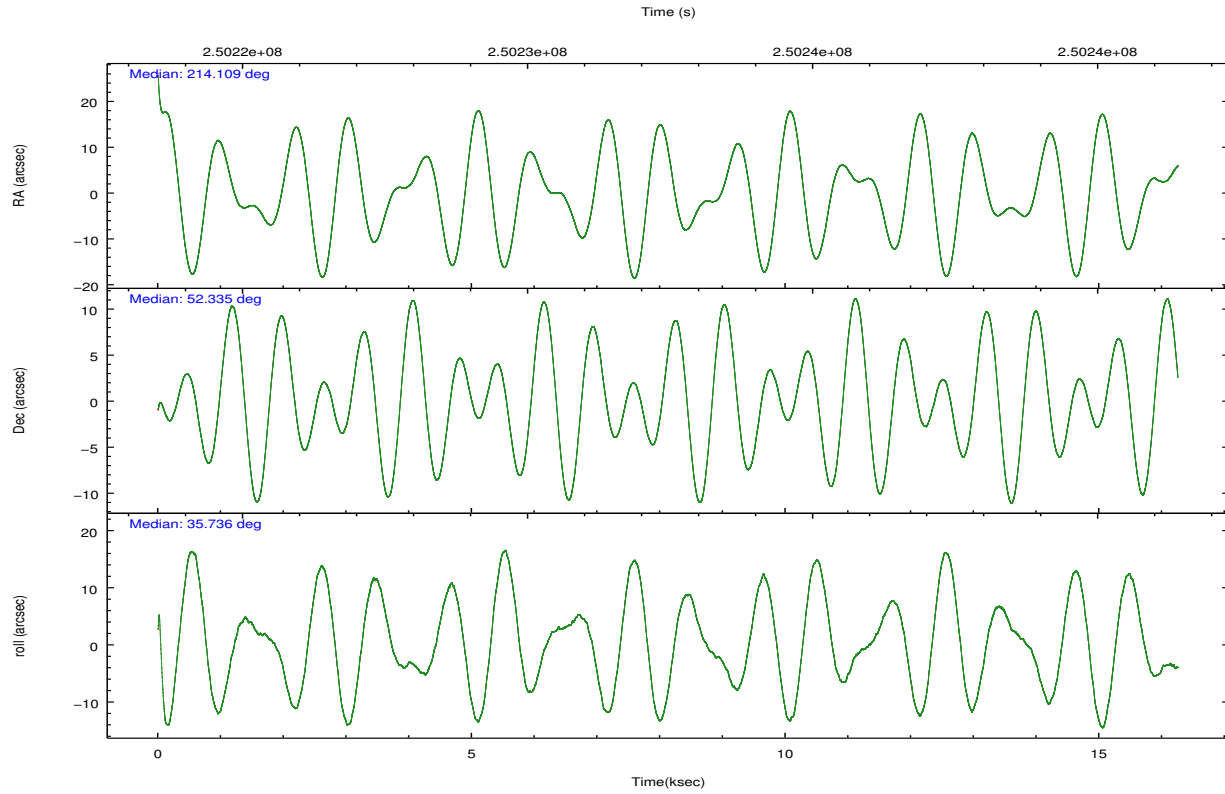
	ccd 0	ccd 1	ccd 2	ccd 3	ccd 6
grade 0 events	3891	4733	3913	3815	4003
	3%	4%	3%	3%	3%
grade 1 events	54	66	63	61	47
	0%	0%	0%	0%	0%
grade 2 events	2686	2801	2664	2176	2399
	2%	2%	2%	1%	2%
grade 3 events	1278	1357	1229	1186	1323
	1%	1%	1%	1%	1%
grade 4 events	1177	1285	1182	1205	1286
	1%	1%	1%	1%	1%
grade 5 events	3822	4293	3597	4413	4410
	3%	4%	3%	3%	3%
grade 6 events	2164	2524	1935	2068	2440
	2%	2%	1%	1%	2%
grade 7 events	90940	88221	100232	96987	94826
	85%	83%	87%	86%	85%

2.2 Compared Parameters

Parameter	Planned	Actual	Parameter	Planned	Actual
Instrument	ACIS	ACIS	Obspar format version number	7	7
Detector	ACIS-01236	ACIS-01236	Obspar file type	PREDICTED	ACTUAL
Grating	NONE	NONE	Obspar update status	NONE	UPDATED
Data mode	VFAINT	VFAINT	Number of optional ACIS chips dropped	0	0
Observation mode	POINTING	POINTING	On-chip summing requested	N	N
[deg] Pointing RA	214.091246	214.1095465178101	Subarray requested	NONE	NONE
[deg] Pointing Dec	52.310070	52.33510702289134	Alternating exposures requested	N	N
[deg] Pointing Roll	35.553547	35.74776363038447	[s] Primary exposure time	0.000000	3.1
[deg] Roll angle	50.756000	50.756000			
[deg] Roll tolerance	20.000000	20.000000			
Roll constraint allows 180D rotation	Y	Y			
[mm] SIM focus pos	-0.782348	-0.7809083437167272			
[mm] SIM defocus	0	0.001439871863259334			
[mm] SIM translation stage pos	-233.592463	-233.5874344608287			
[mm] SIM translation stage offset	0	-0.005018542100998502			
[s] Observation start time (MET)	250224498.184000	250223386.57491			
Observation start date	2005-12-06T02:47:14	2005-12-06T02:29:46			
[s] Observation end time (MET)	250240598.184000	250241959.06327			
Observation end date	2005-12-06T07:15:34	2005-12-06T07:39:19			
Read mode	TIMED	TIMED			

2.3 Aspect



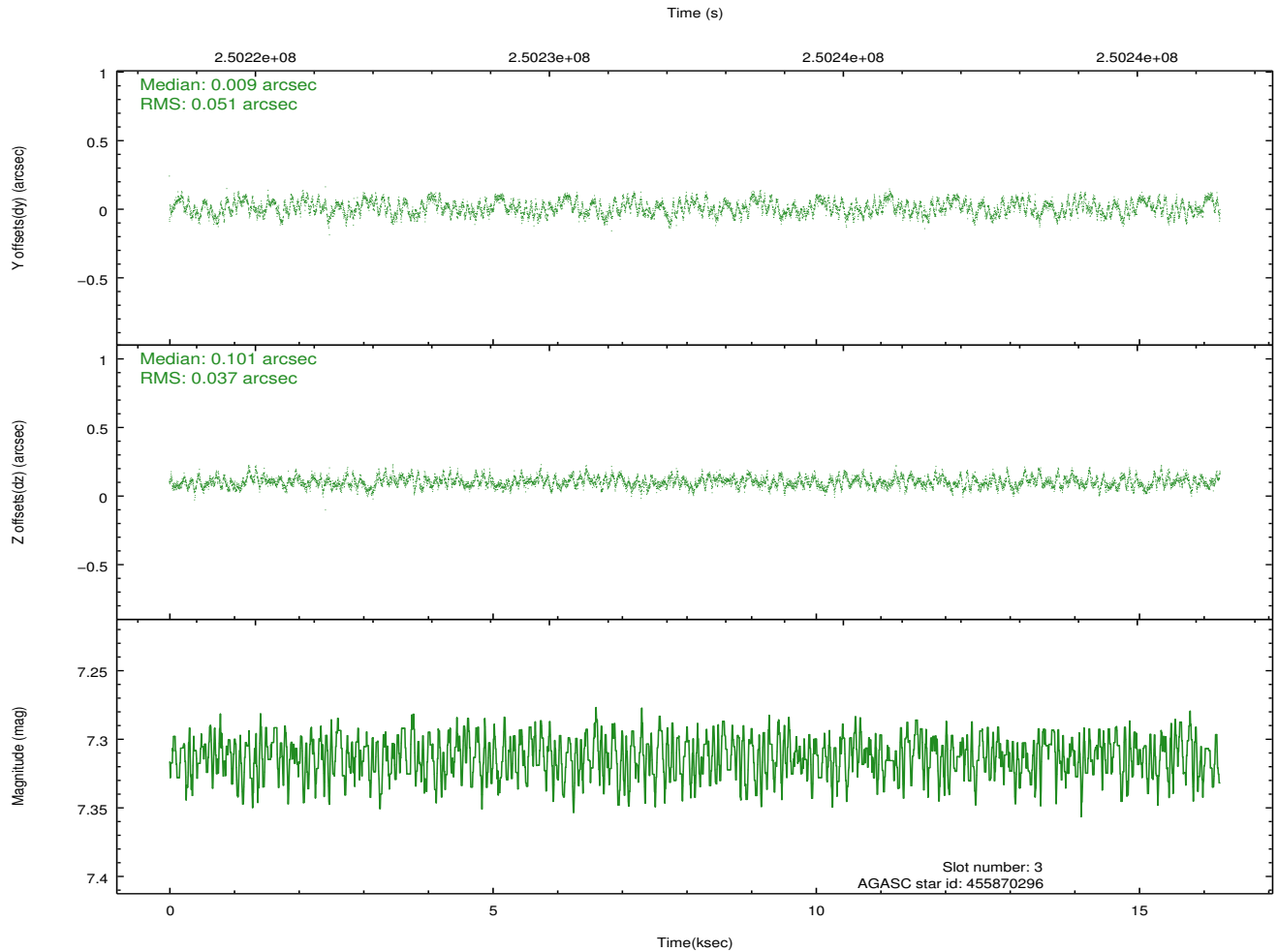
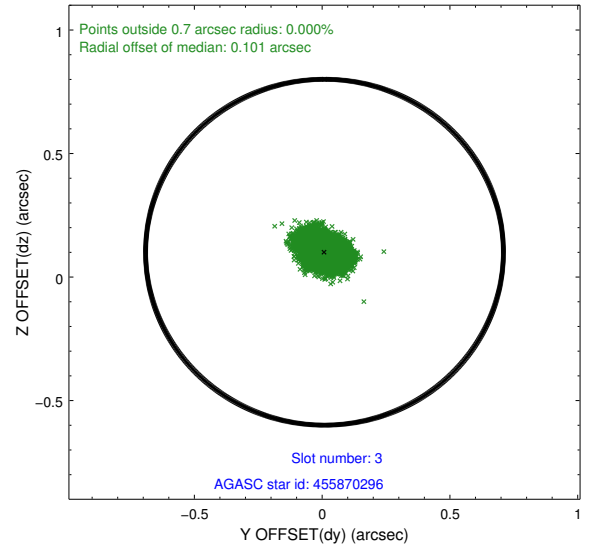
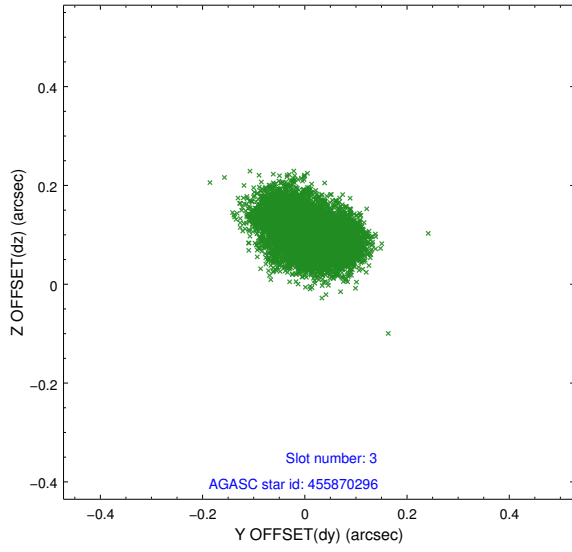


Slot Statistics

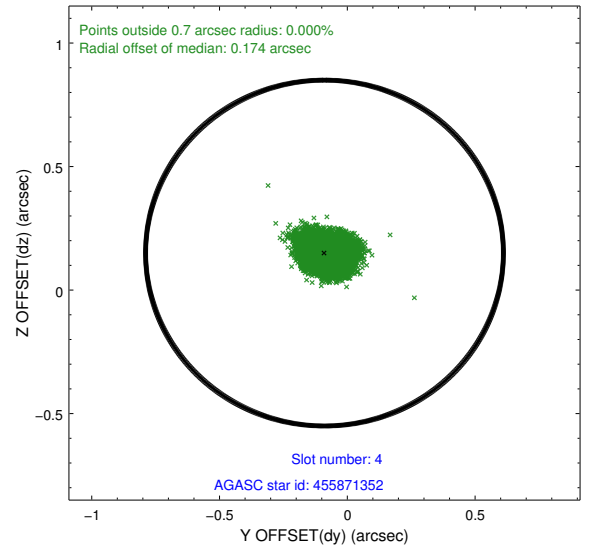
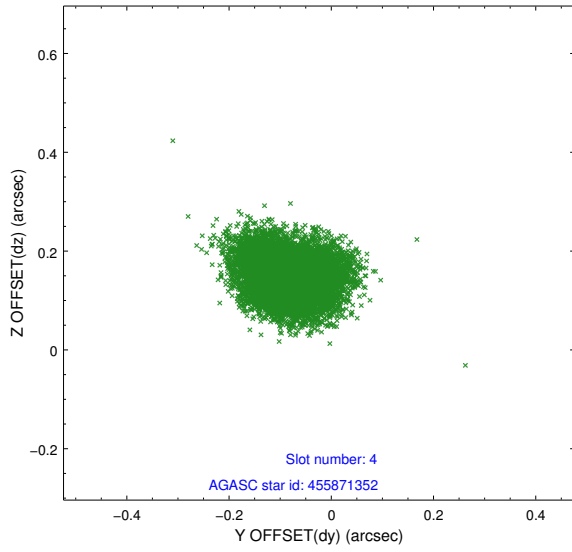
slot	status	id	mag	n_pts	med_dy	med_dz	dr1	dr2	ra	dec	mean_y	mean_z
0	FID	ACIS-I-1	7.24	3965	0.037	-0.024	0.015	0.039	0.000000	0.000000	932.67	-834.53
1	FID	ACIS-I-5	7.23	3965	-0.161	0.053	0.013	0.025	0.000000	0.000000	-1815.45	1062.95
2	FID	ACIS-I-6	7.25	3965	0.034	0.041	0.011	0.021	0.000000	0.000000	397.97	1707.70
3	GUIDE	455870296	7.31	7926	0.009	0.101	0.069	0.105	214.629779	52.033323	394.06	-1500.26
4	GUIDE	455871352	8.12	7927	-0.089	0.150	0.072	0.114	215.099961	52.172669	1533.68	-1684.47
5	GUIDE	505806936	7.01	7928	0.056	0.002	0.091	0.147	213.820815	52.535927	-8.19	1006.55
6	GUIDE	505812376	7.58	7930	-0.286	-0.049	0.060	0.097	214.039537	52.937930	1222.51	1904.55
7	GUIDE	504894728	8.83	7926	0.305	-0.205	0.079	0.124	213.220892	52.722550	-673.78	2320.78

2.4 Star Slots

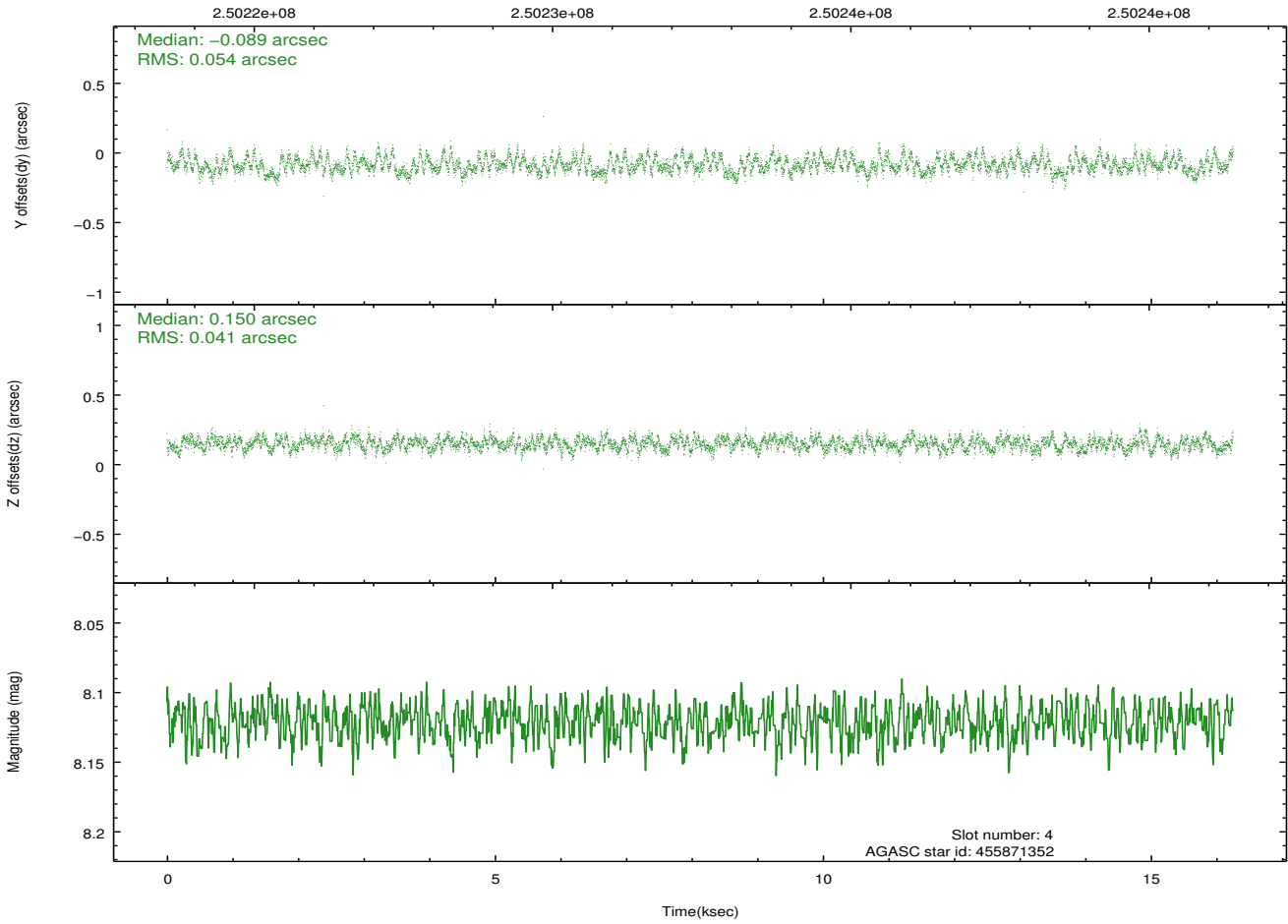
2.4.1 Slot 3



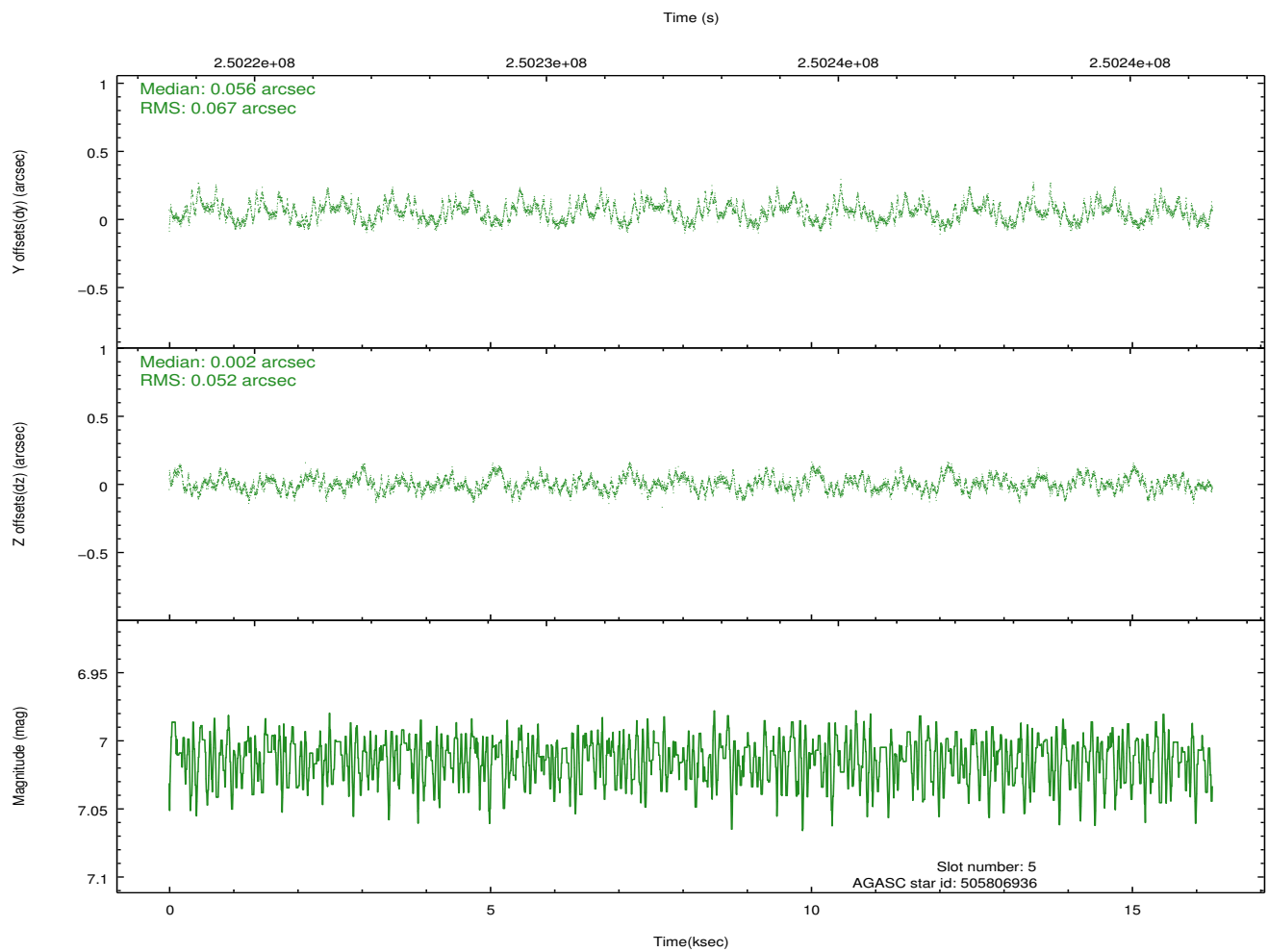
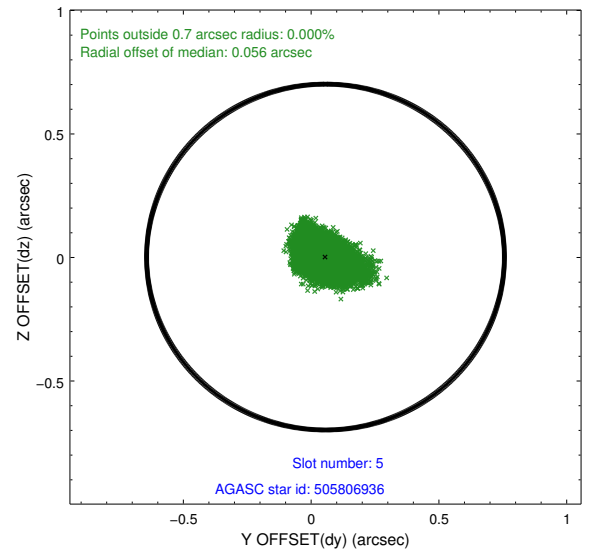
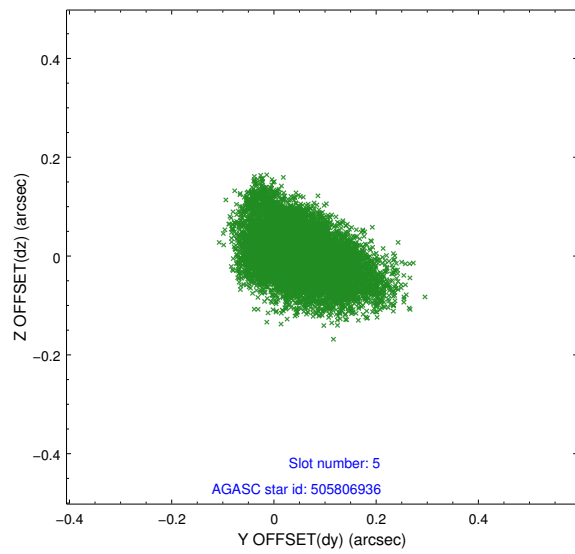
2.4.2 Slot 4



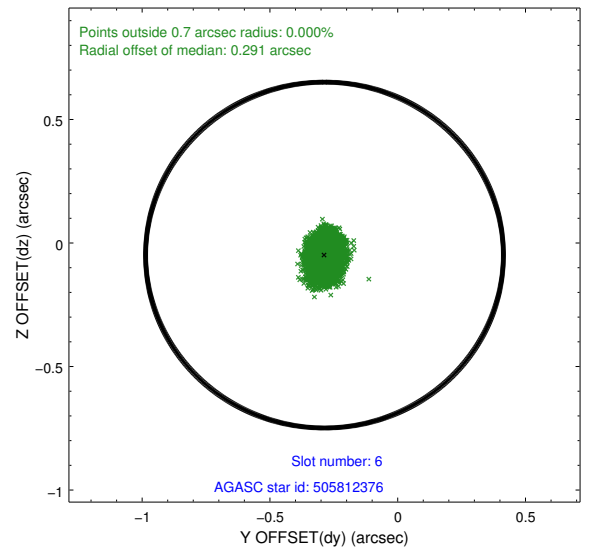
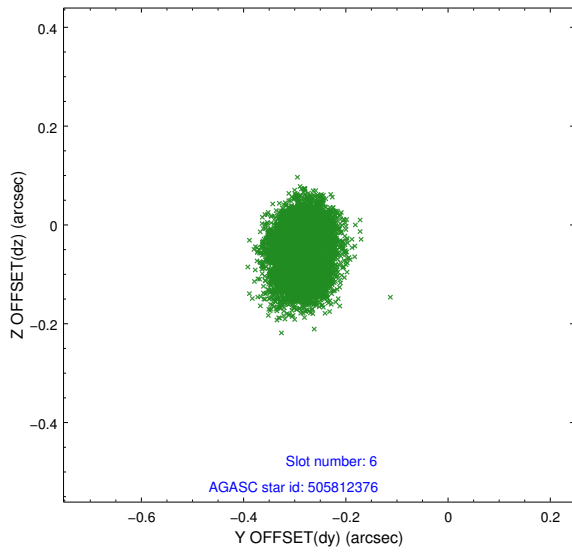
Time (s)



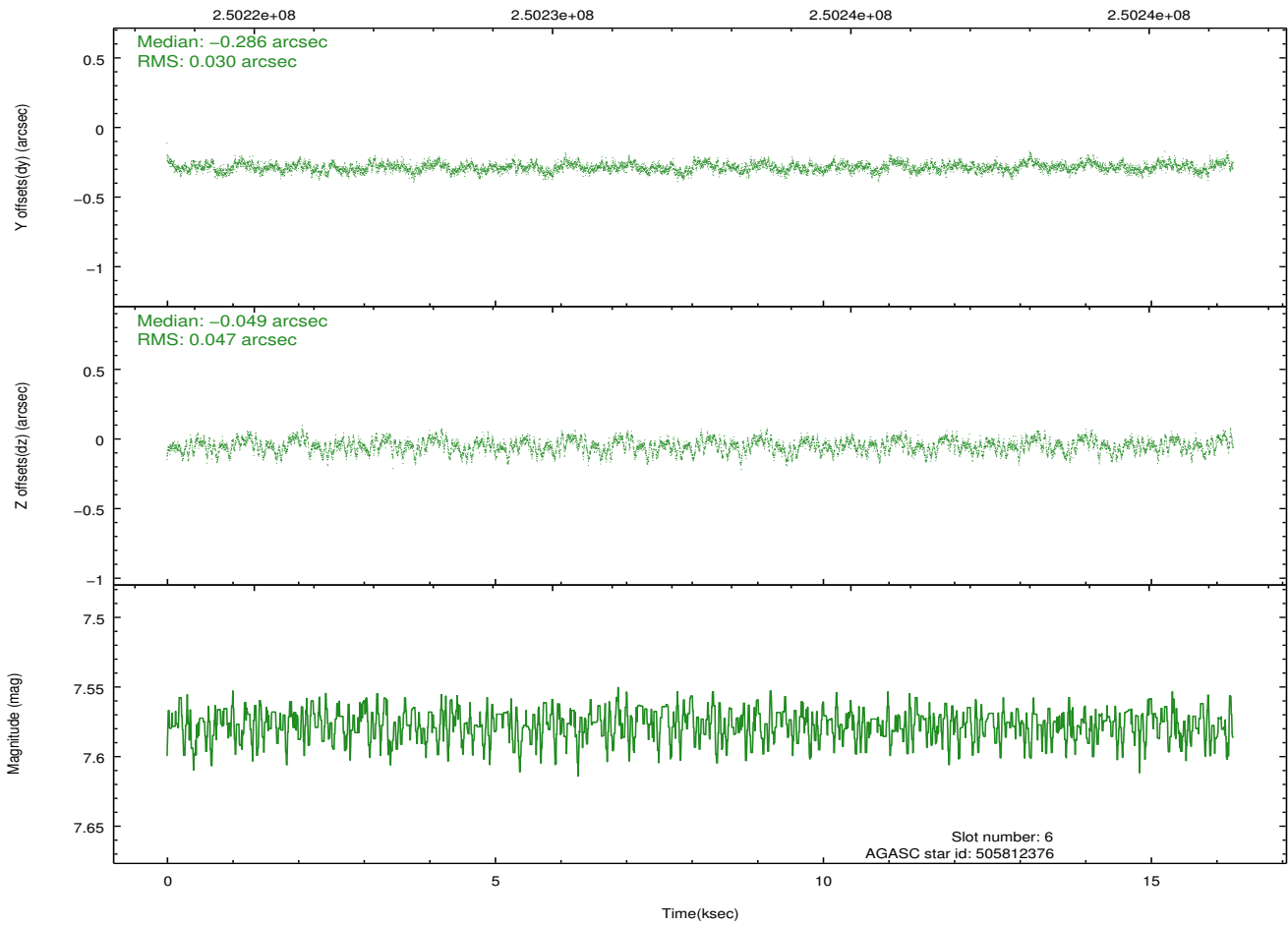
2.4.3 Slot 5



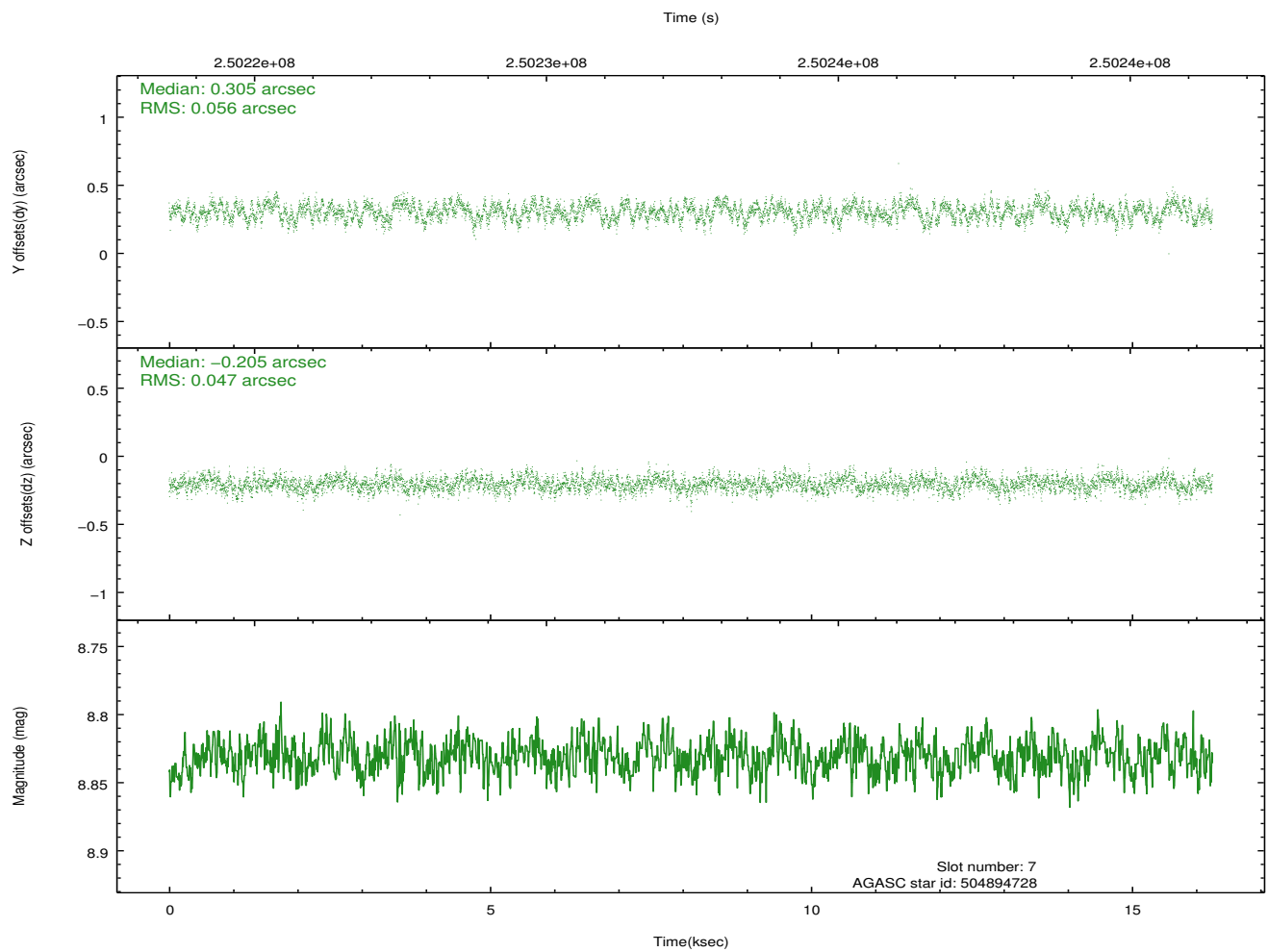
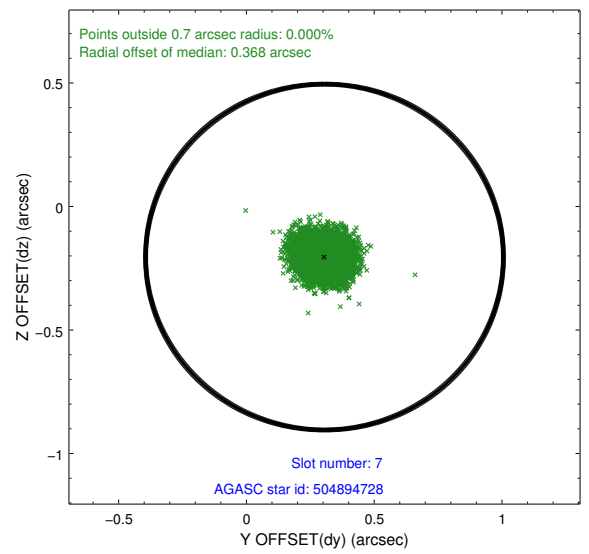
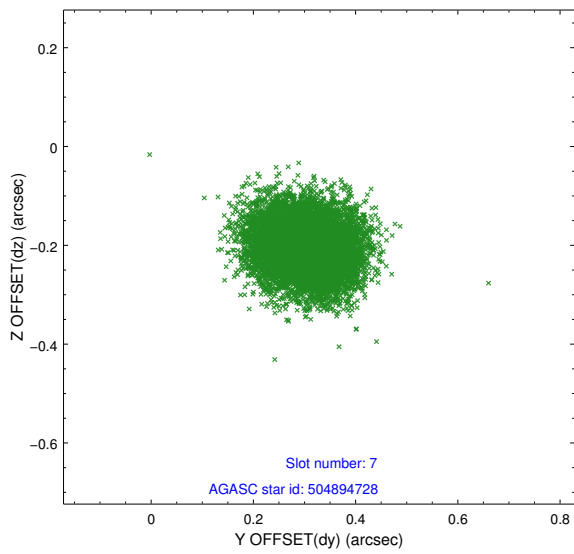
2.4.4 Slot 6



Time (s)

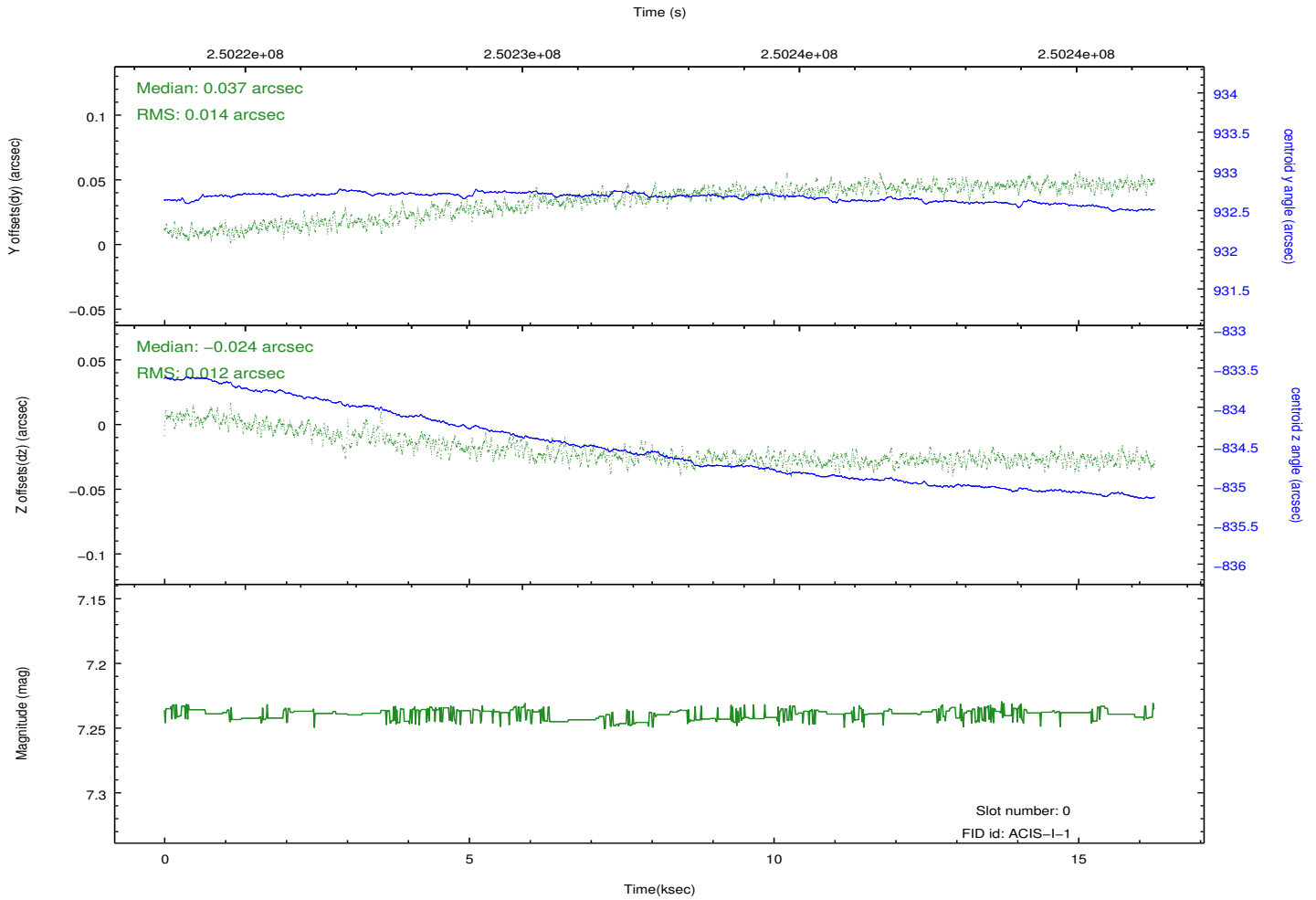
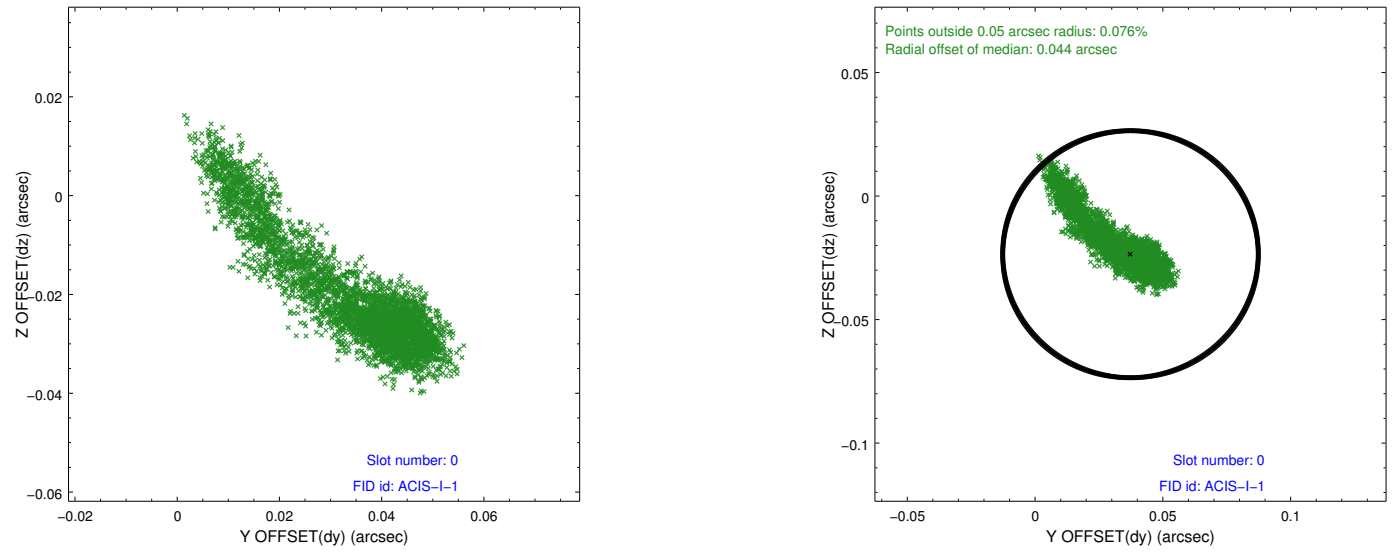


2.4.5 Slot 7

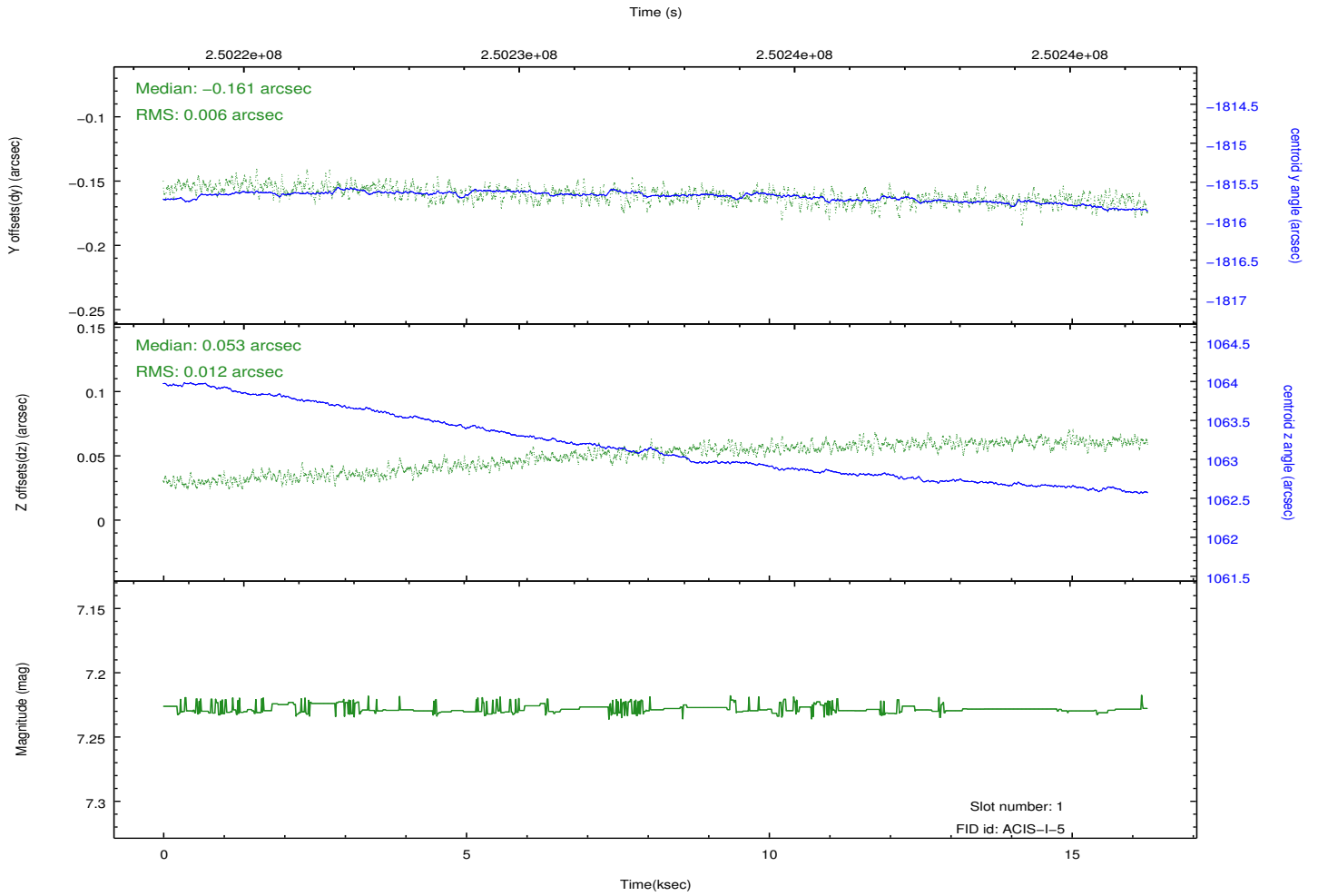
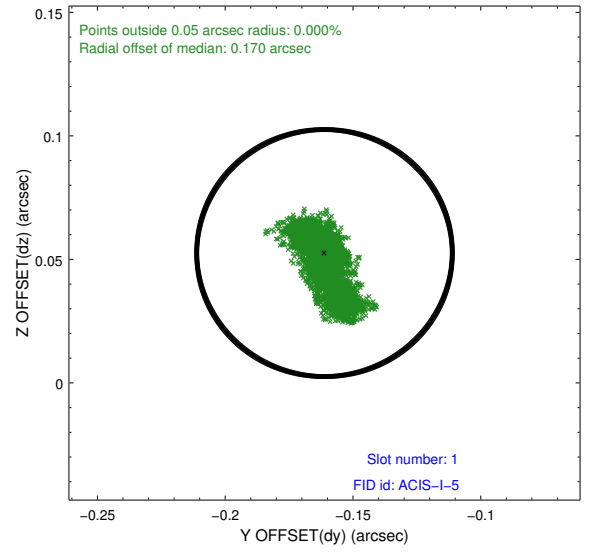
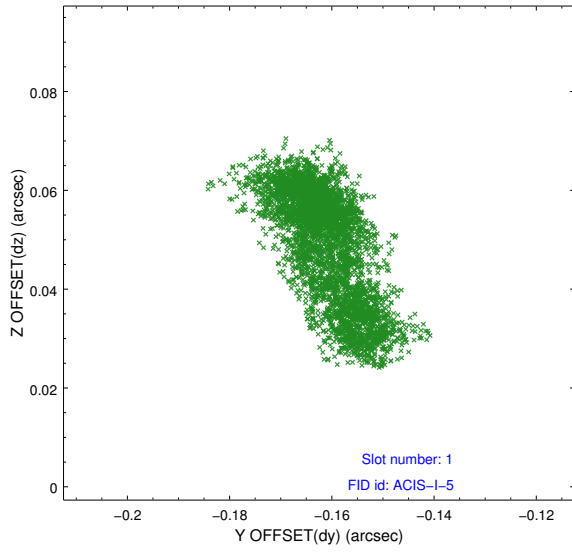


2.5 FID Slots

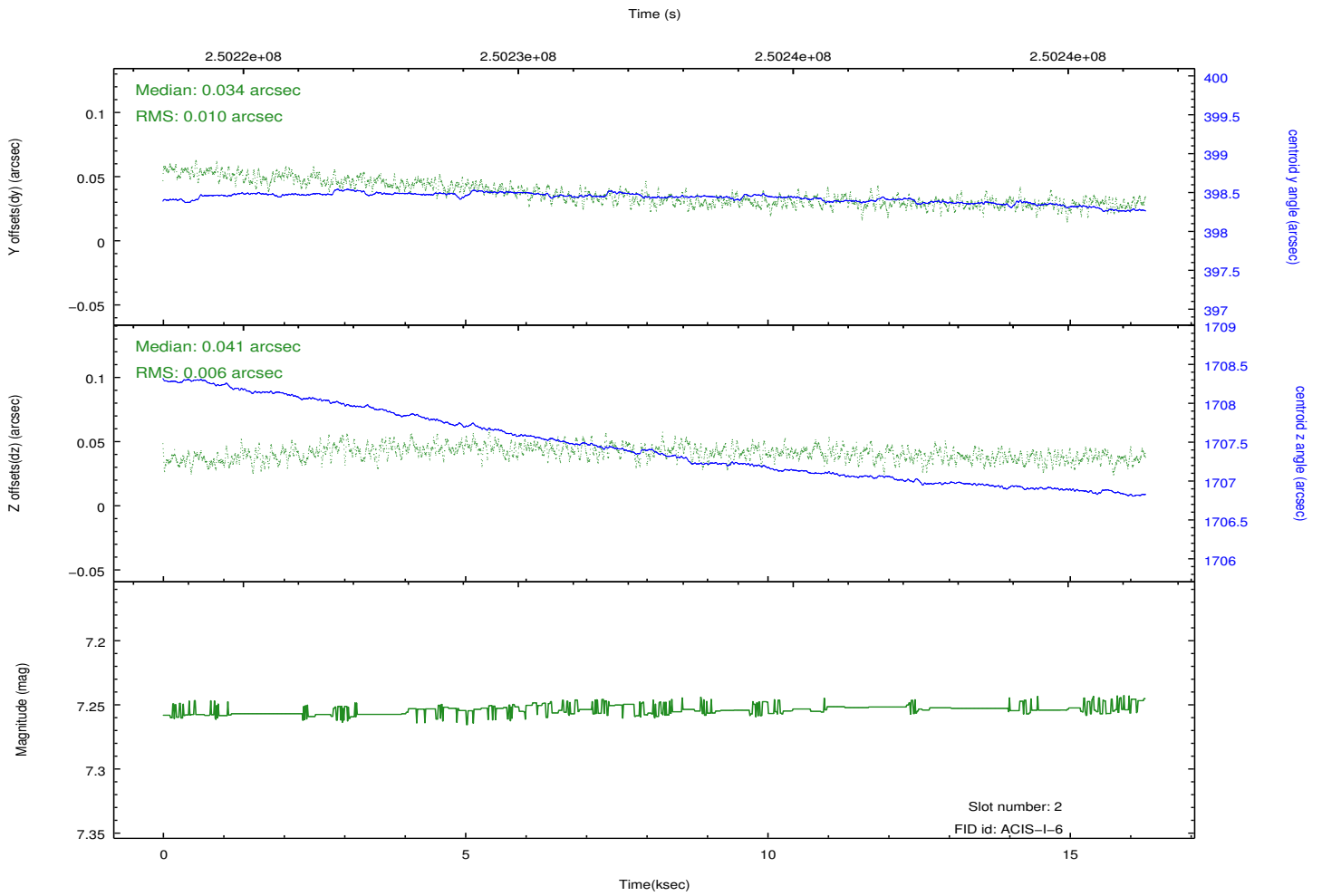
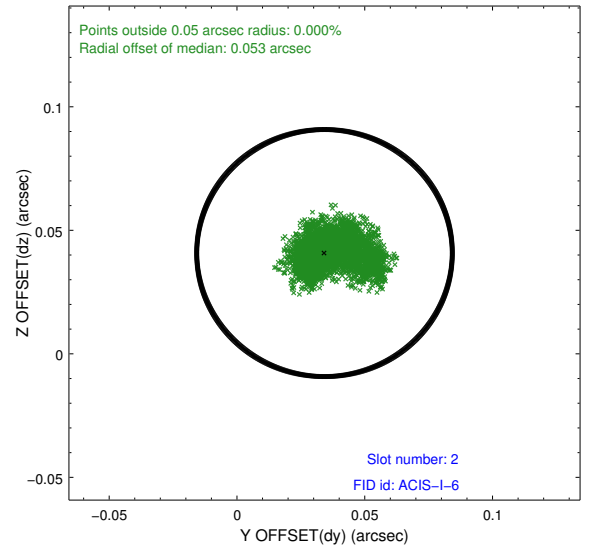
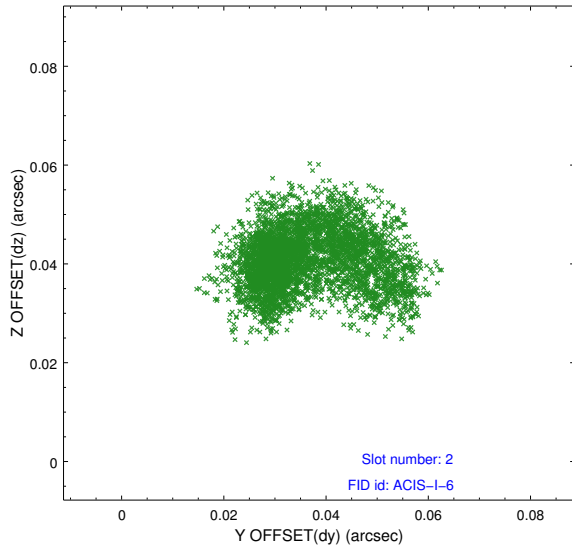
2.5.1 Slot 0



2.5.2 Slot 1



2.5.3 Slot 2



A Summary

A.1 Status

V&V Scientist	Jen Lauer
V&V Date (YYYY-MM-DD)	2012.03.19
V&V Edition	1
V&V Disposition and Status	OK
V&V Charge Time	16.24395

A.2 Comments

Roll constraint met.