

V&V Reference Report

L2 ASCDS Version : 8.4.3

Observation 7219 - L2 Version 4
Chandra X-Ray Center

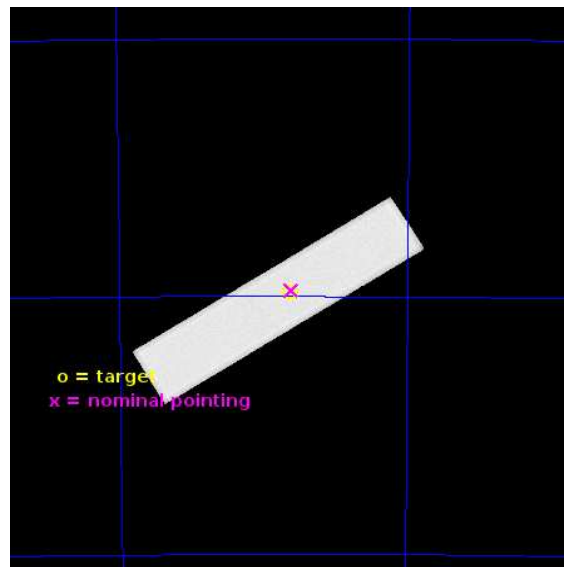
L2 Processing Date : Jun 29 2013

Contents

1	Front	2
2	OBI	3
2.1	OBI	3
2.1.1	Images	3
2.1.2	Parameters	4
2.1.3	Events	4
2.2	Compared Parameters	5
2.3	Aspect	6
2.4	Star Slots	9
2.4.1	Slot 3	9
2.4.2	Slot 4	10
2.4.3	Slot 5	11
2.4.4	Slot 6	12
2.4.5	Slot 7	13
2.5	FID Slots	14
2.5.1	Slot 0	14
2.5.2	Slot 1	15
2.5.3	Slot 2	16
A	Summary	17
A.1	Status	17
A.2	Comments	17

1 Front

seq_num	500610	Sequence number
obs_id	7219	Observation id
title	Precision X-ray timing and imaging of the young and energetic pulsar PSR J1357-6429	Proposal title
observer	Prof Mariano Mendez	Principal investigator
object	PSR J1357-6429	Source name
ra_targ	209.26	Observer's specified target RA [deg]
dec_targ	-64.491722	Observer's specified target Dec [deg]
ra_nom	209.25086670625	Nominal RA [deg]
dec_nom	-64.489134277109	Nominal Dec [deg]
roll_nom	148.0591034329	Nominal Roll [deg]
revision	4	Processing version of data
ontime	16128.631994814	[s]
livetime	16063.292345441	Ontime multiplied by DTCOR
l2events	658775	Number of level 2 events

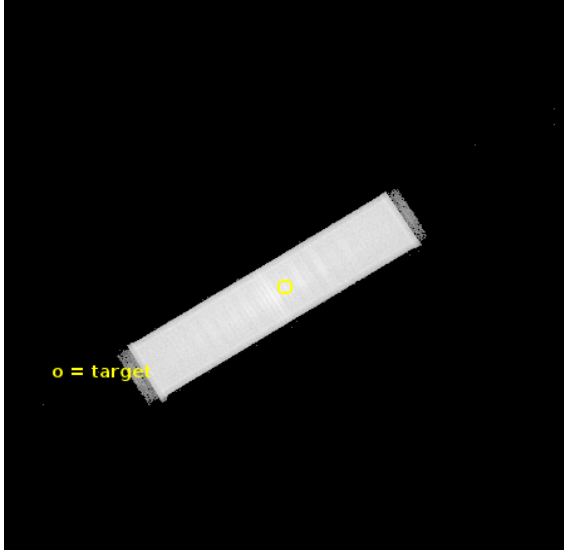


2 OBI

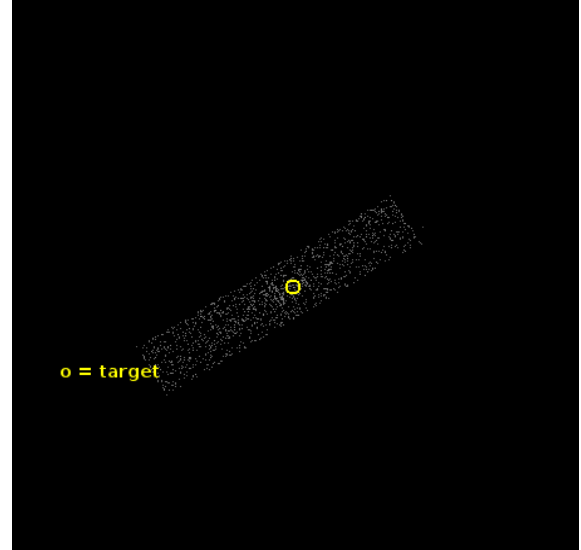
2.1 OBI

2.1.1 Images

Level 1 Image



Level 1 Bad Events



2.1.2 Parameters

obi_num	0	Obi number	sched_exp_time	16000.000000	[s] Scheduled observation exposure time
ascdsver	10	Processing system revision	ontime	16128.631994814	[s]
caldsver	4.5.7	 	l1events	1029769	Number of level 1 events
date	2013-06-29T05:18:14	Date and time of file creation			
revision	4	Processing version of data			

2.1.3 Events

Level 1 Events

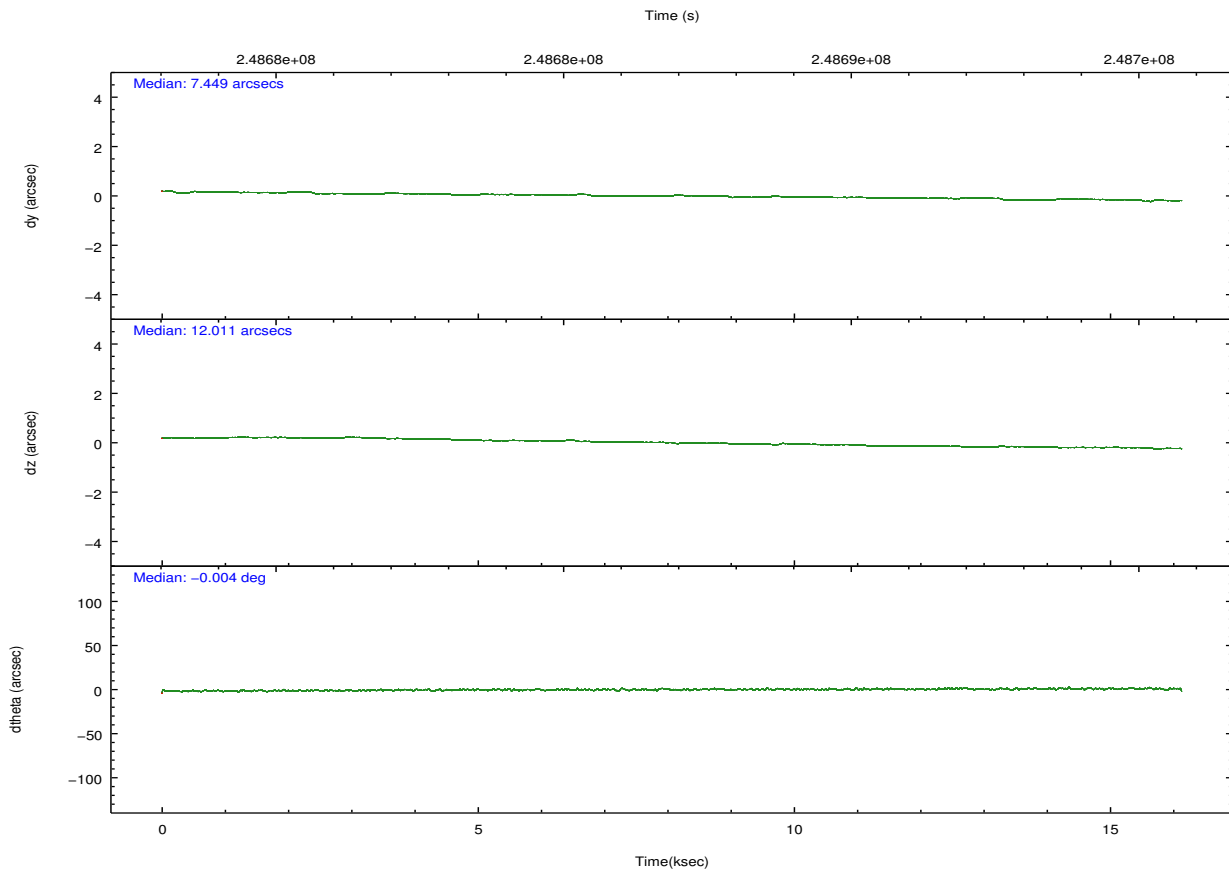
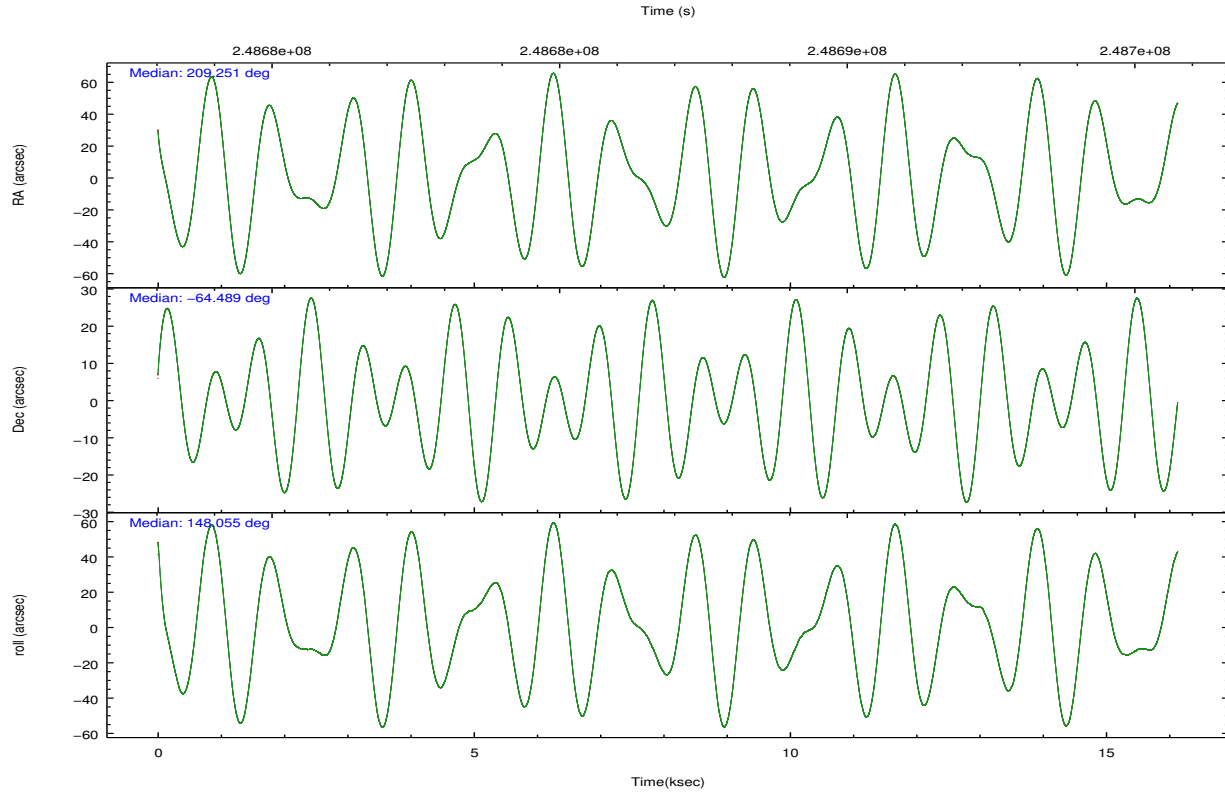
	segment 1	segment 2	segment 3
level 1 events	1243	1028522	4
rejected events	89	75699	3
rejected %	7%	7%	75%

2.2 Compared Parameters

Parameter	Planned	Actual
Instrument	HRC	HRC
Detector	HRC-S	HRC-S
Grating	NONE	NONE
Data mode	OBSERVING	OBSERVING
Observation mode	POINTING	POINTING
[deg] Pointing RA	209.317345	209.2508667062541
[deg] Pointing Dec	-64.488658	-64.48913427710876
[deg] Pointing Roll	148.051752	148.0591034328953
[mm] SIM focus pos	-1.529586	-1.523540733526241
[mm] SIM defocus	0.003750771043328743	0.009795905878055677
[mm] SIM translation stage pos	250.455976	250.4635187648994
[mm] SIM translation stage offset	0	-0.007540371344731511
[s] Observation start time (MET)	248678942.184000	248677634.22849
Observation start date	2005-11-18T05:27:58	2005-11-18T05:07:14
[s] Observation end time (MET)	248694942.184000	248696398.39186
Observation end date	2005-11-18T09:54:38	2005-11-18T10:19:58

Parameter	Planned	Actual
Obspar format version number	7	7
Obspar file type	PREDICTED	ACTUAL
Obspar update status	NONE	UPDATED

2.3 Aspect

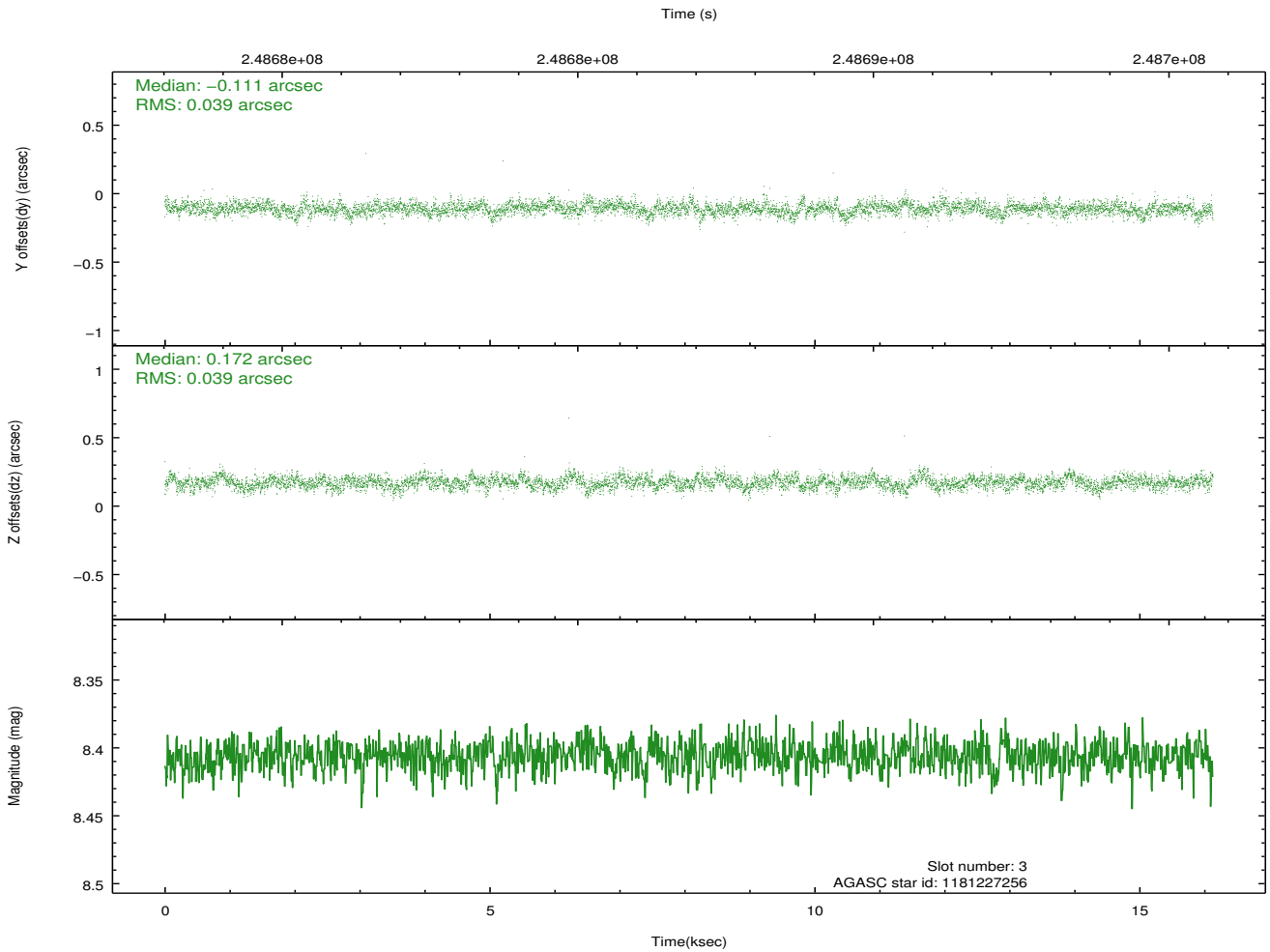
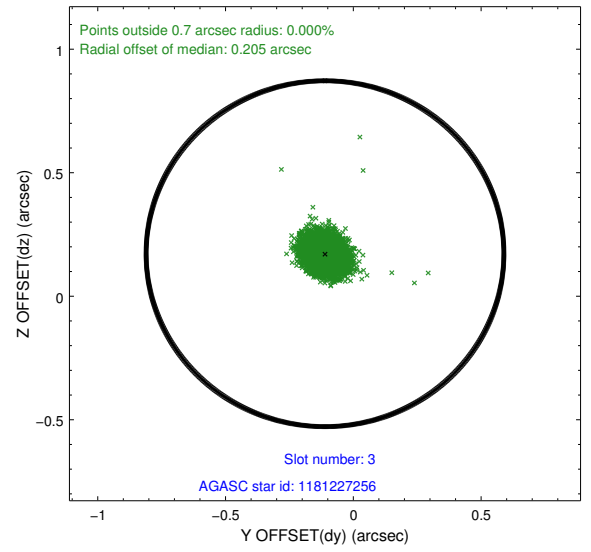
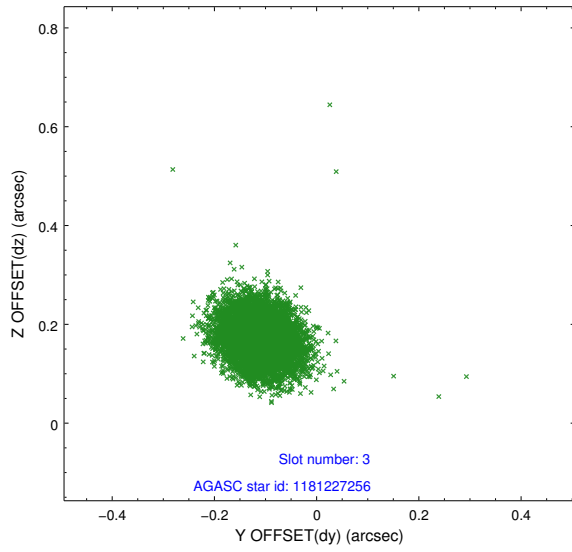


Slot Statistics

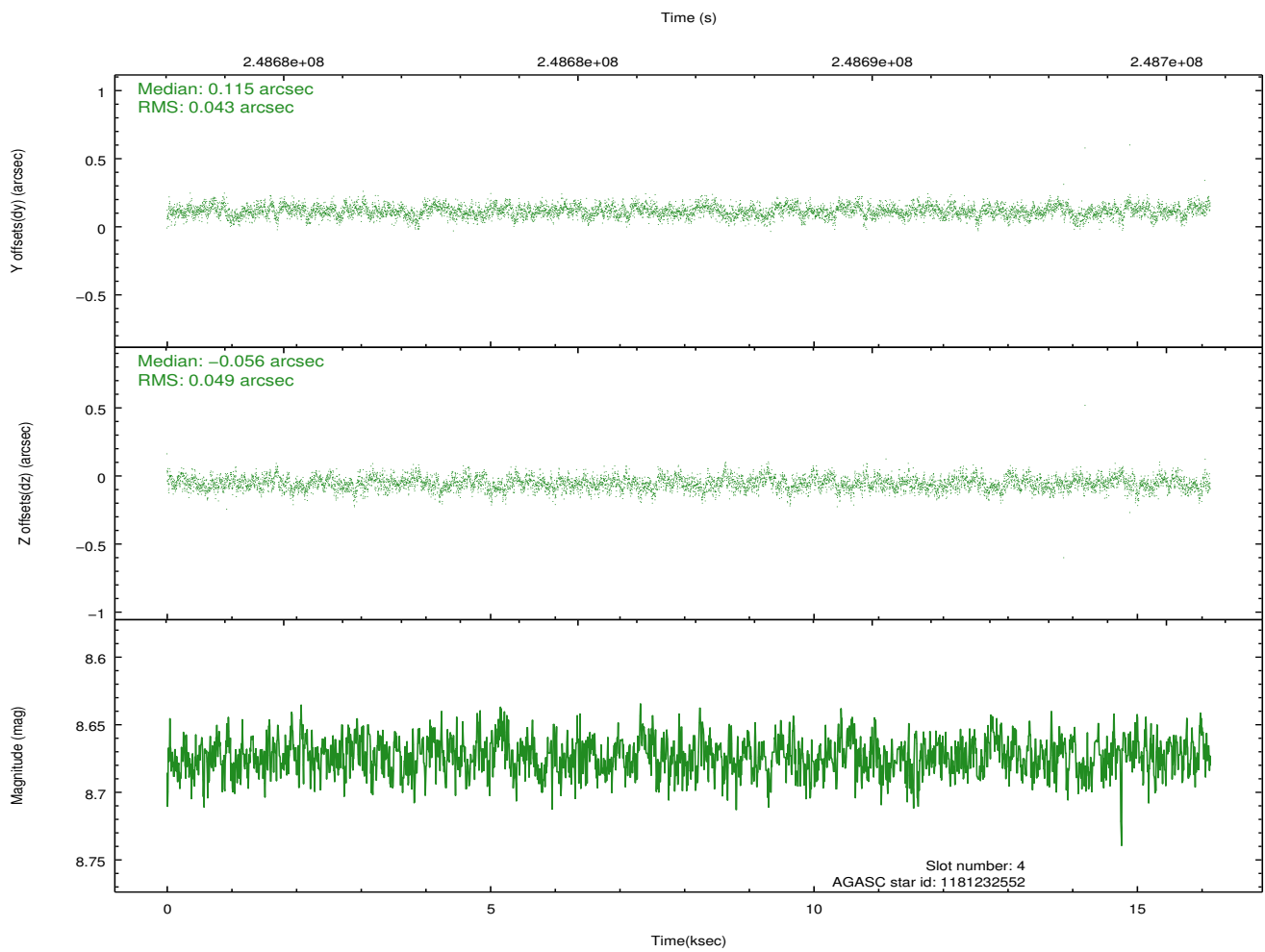
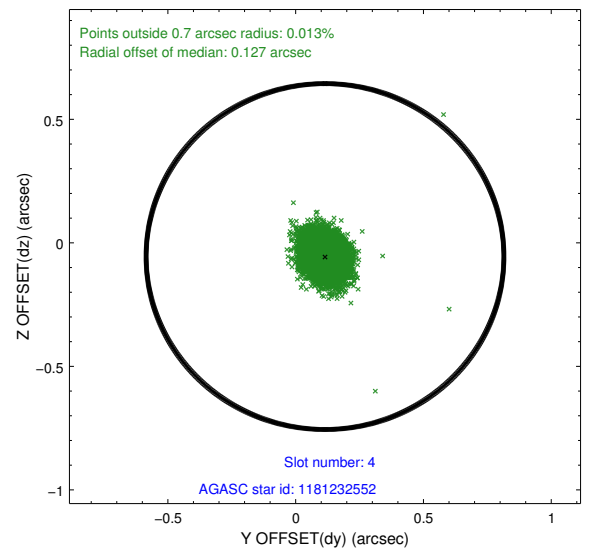
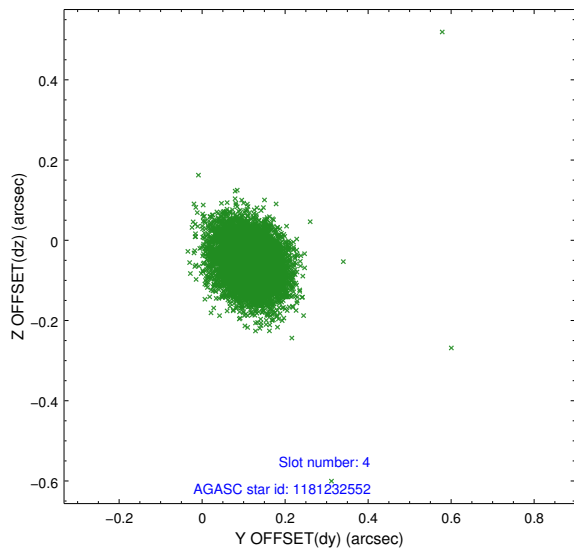
slot	status	id	mag	n_pts	med_dy	med_dz	dr1	dr2	ra	dec	mean_y	mean_z
0	FID	HRC-S-1	7.07	3935	0.129	-0.132	0.009	0.015	0.000000	0.000000	-1161.58	-460.68
1	FID	HRC-S-2	7.07	3935	0.175	-0.119	0.006	0.011	0.000000	0.000000	1237.83	-453.42
2	FID	HRC-S-3	7.07	3935	0.086	-0.051	0.008	0.014	0.000000	0.000000	-1164.03	568.81
3	GUIDE	1181227256	8.41	7865	-0.111	0.172	0.057	0.094	208.179405	-64.135660	2180.38	-118.82
4	GUIDE	1181232552	8.67	7867	0.115	-0.056	0.068	0.111	208.565497	-64.494630	974.42	640.79
5	GUIDE	1181238104	8.91	7866	0.003	-0.067	0.086	0.135	208.215848	-64.823325	786.26	1927.42
6	GUIDE	1181231456	8.25	7866	-0.024	-0.157	0.073	0.114	208.536615	-64.944484	137.90	2028.56
7	GUIDE	1181359360	8.29	7866	0.019	0.106	0.066	0.107	211.217976	-64.384352	-2334.14	-1846.00

2.4 Star Slots

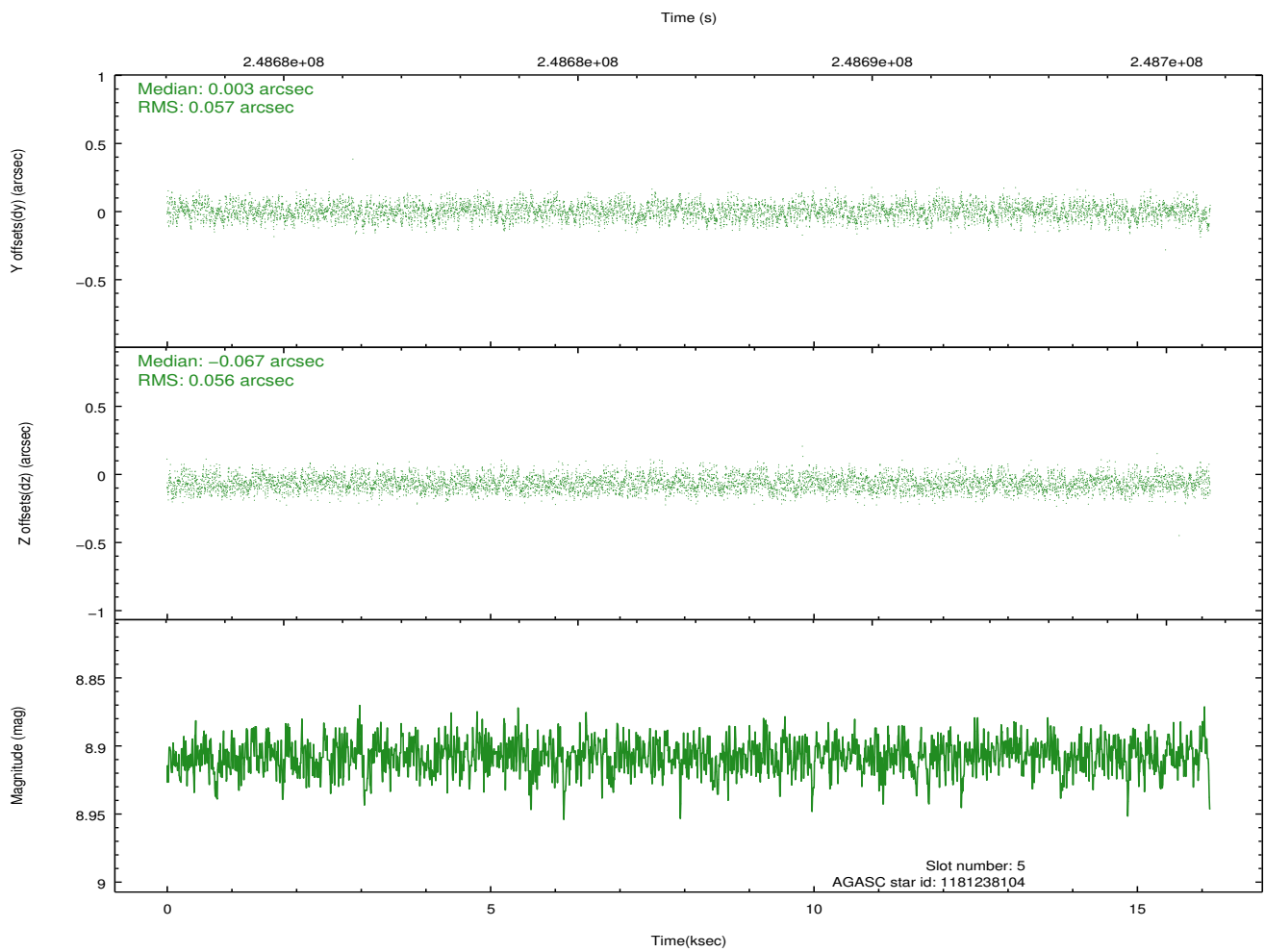
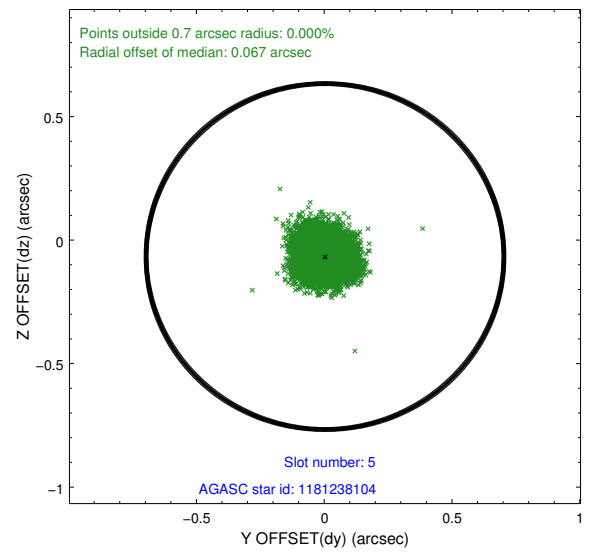
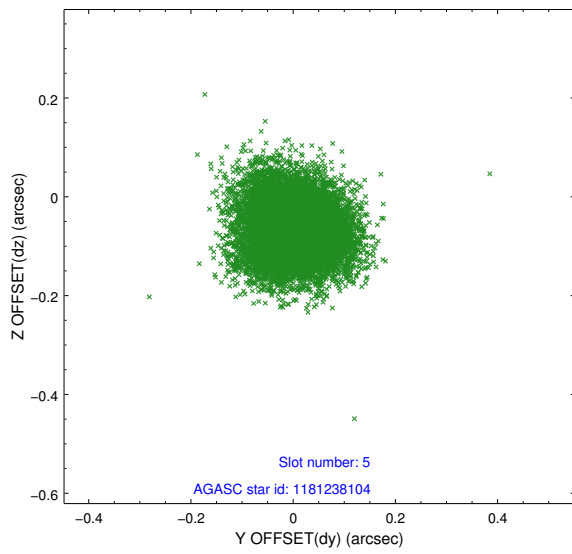
2.4.1 Slot 3



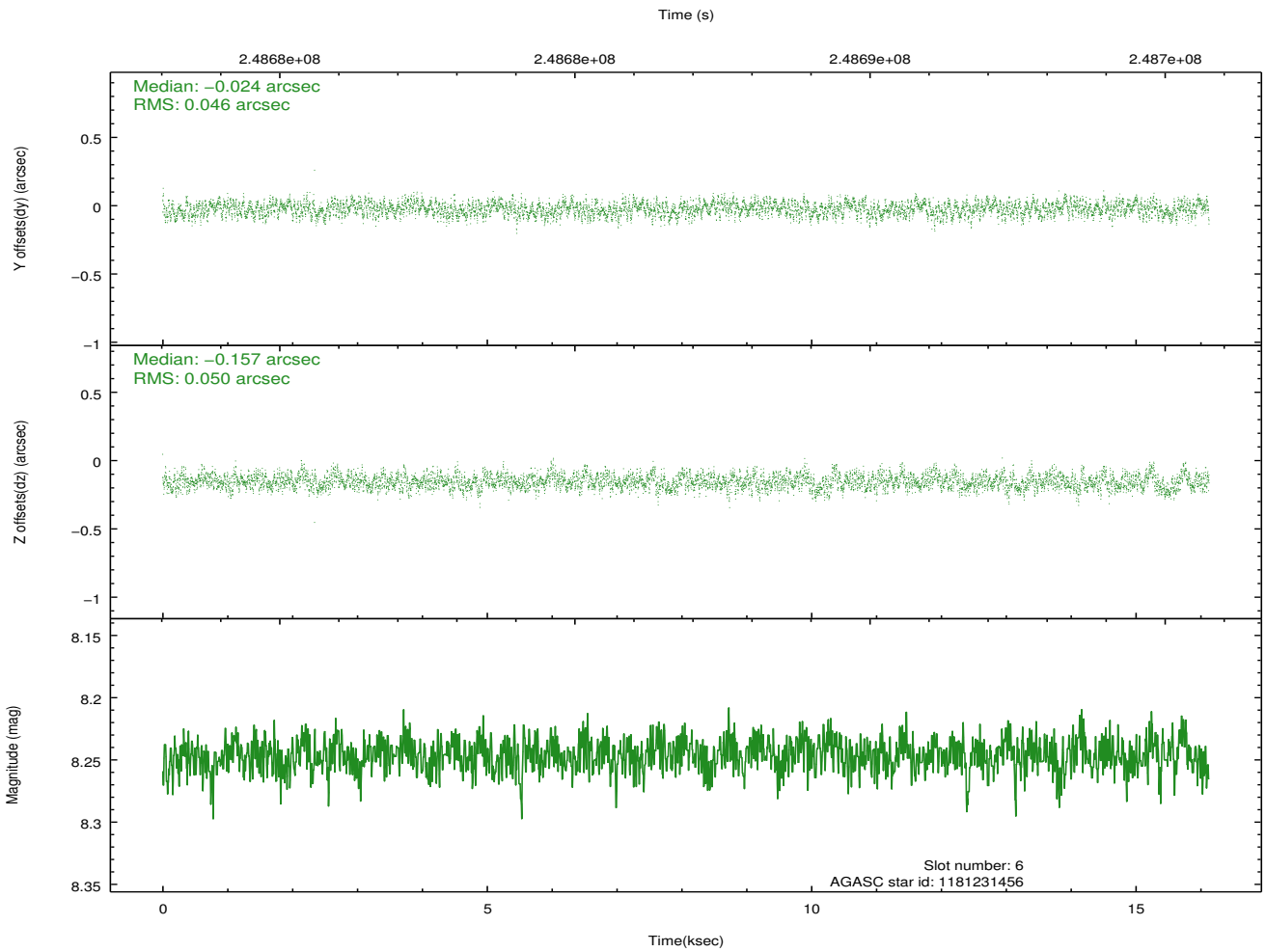
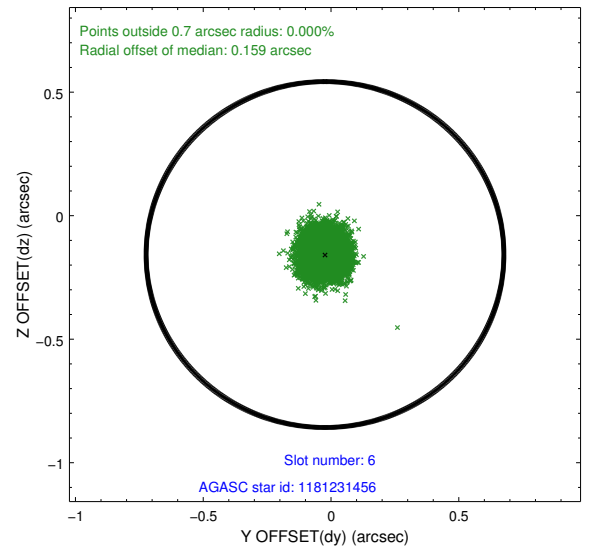
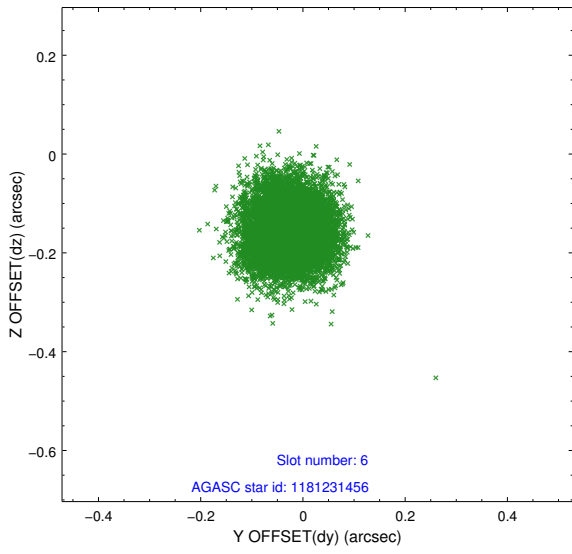
2.4.2 Slot 4



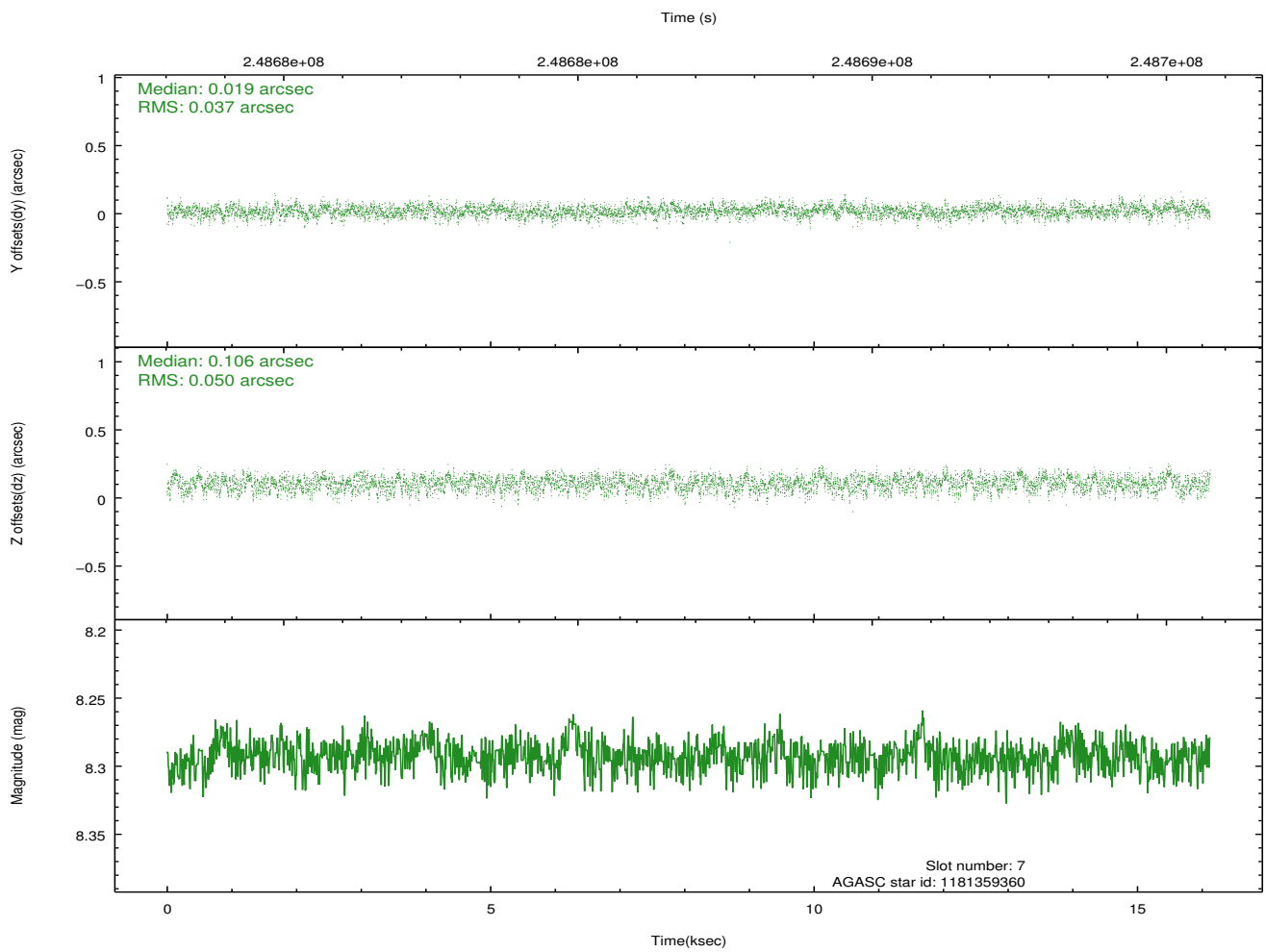
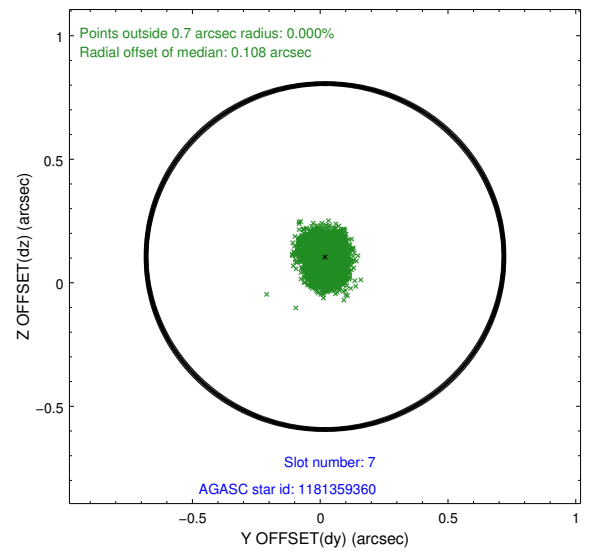
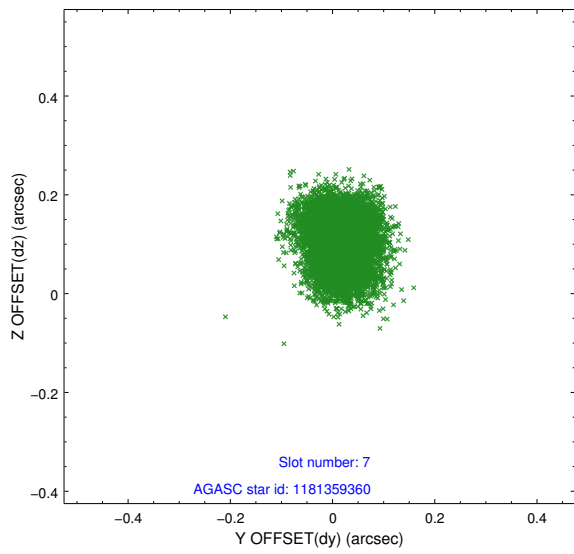
2.4.3 Slot 5



2.4.4 Slot 6

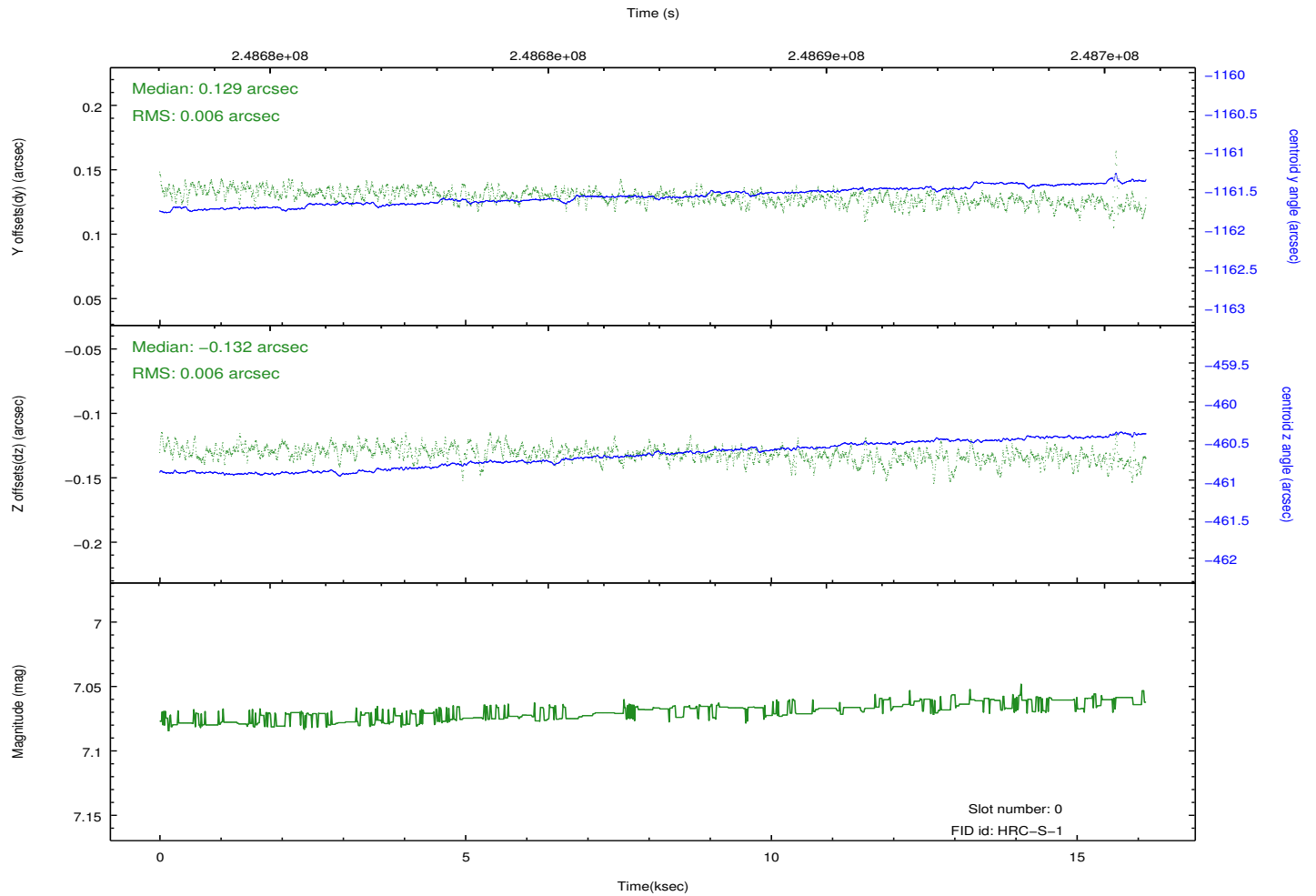
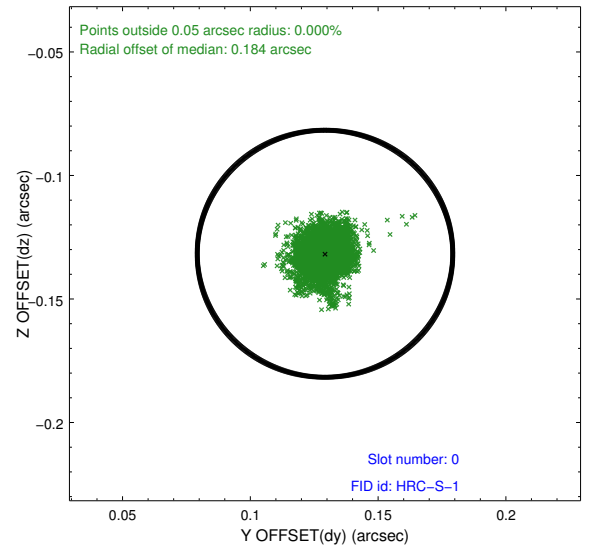
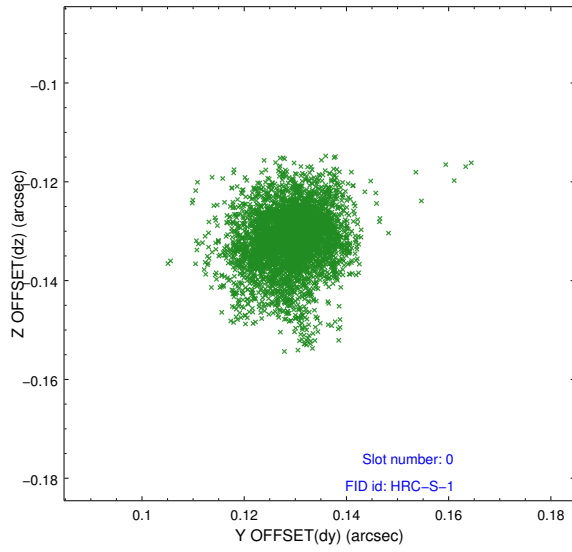


2.4.5 Slot 7

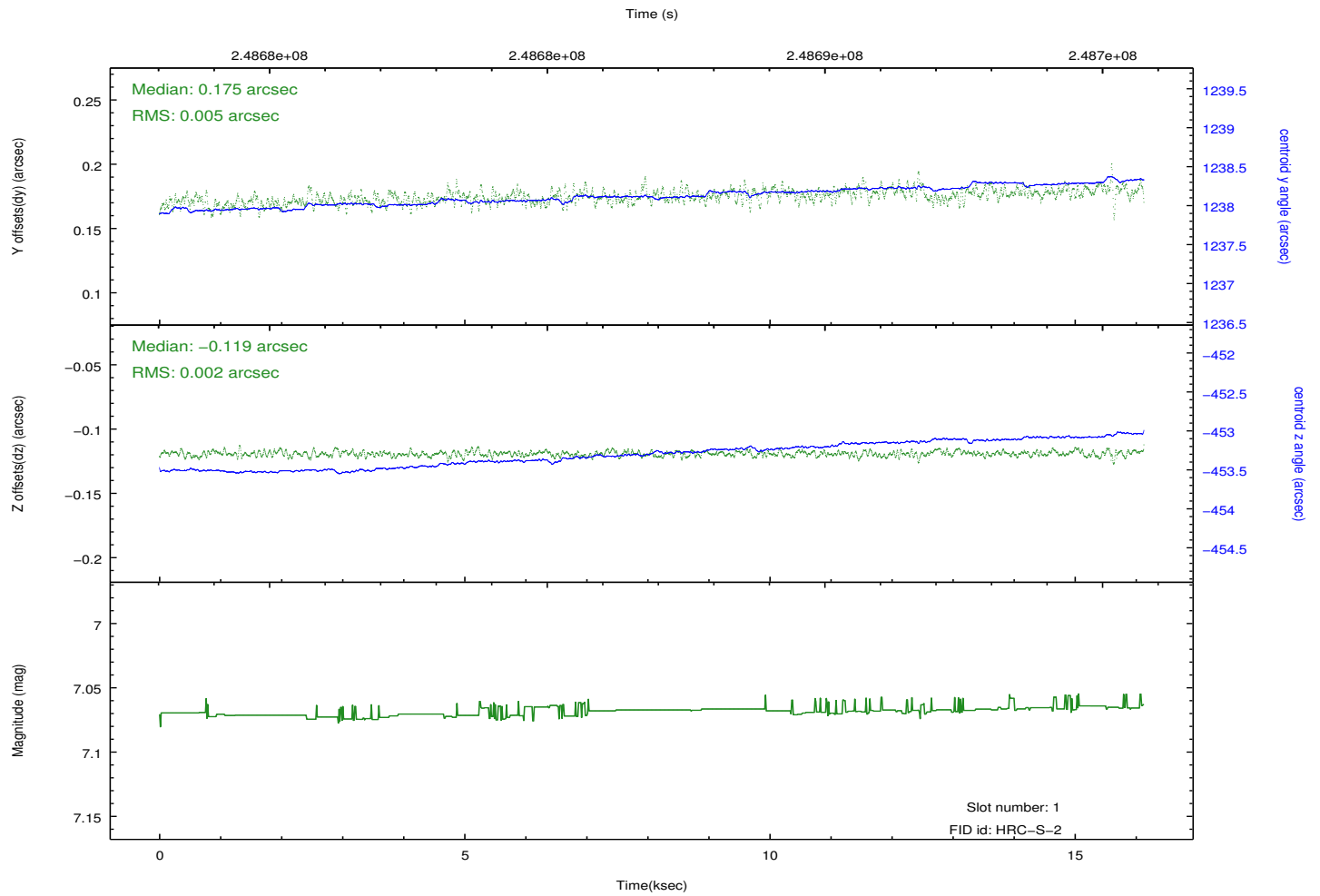
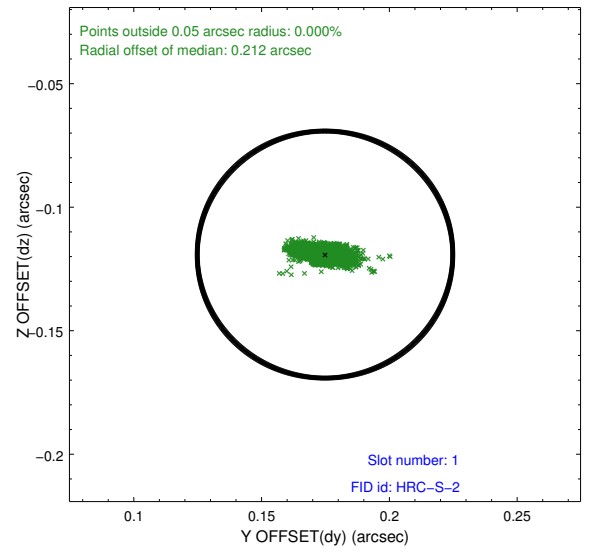
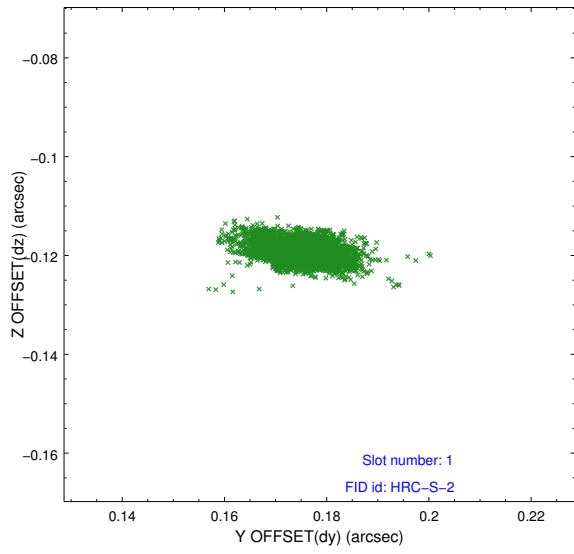


2.5 FID Slots

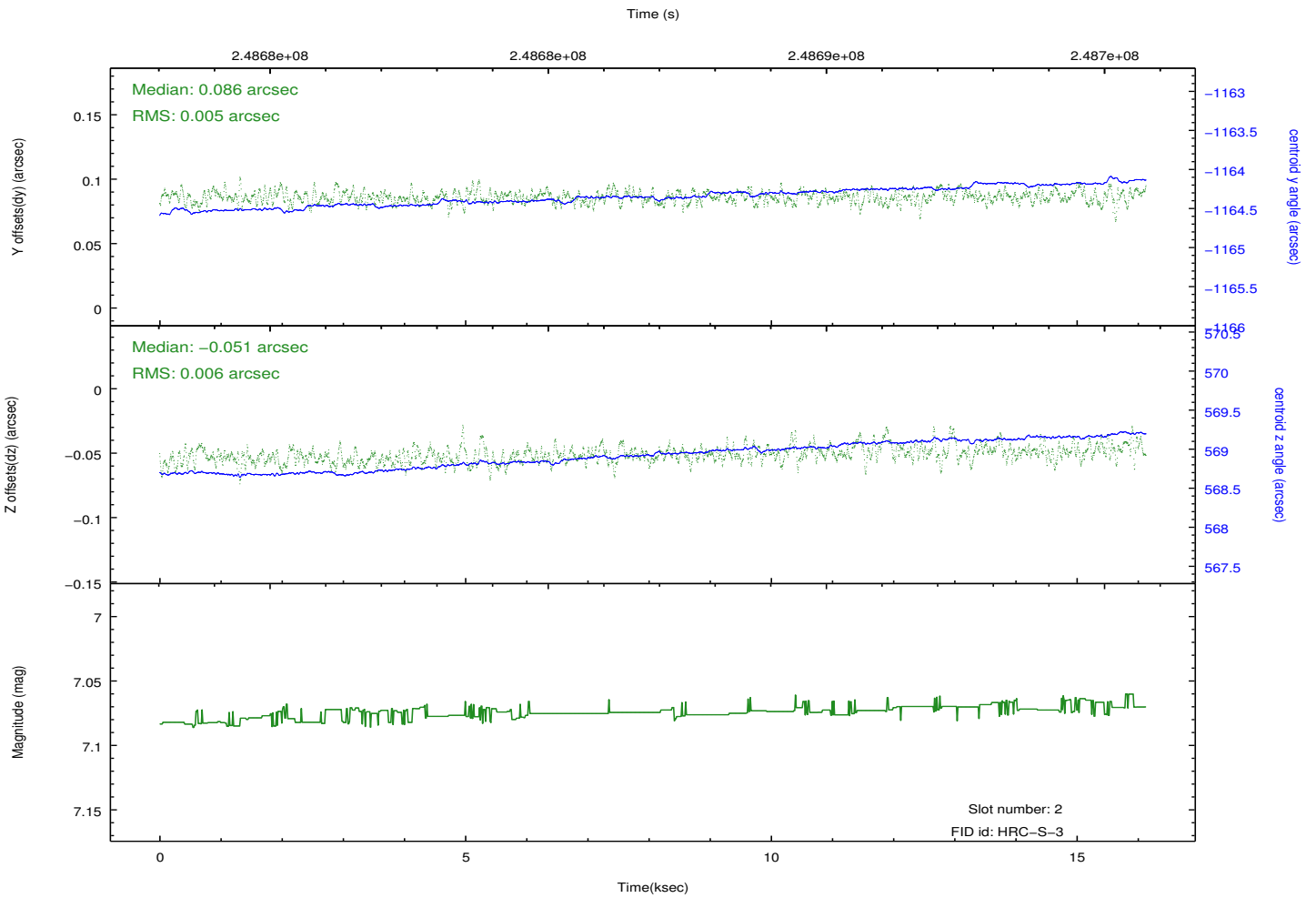
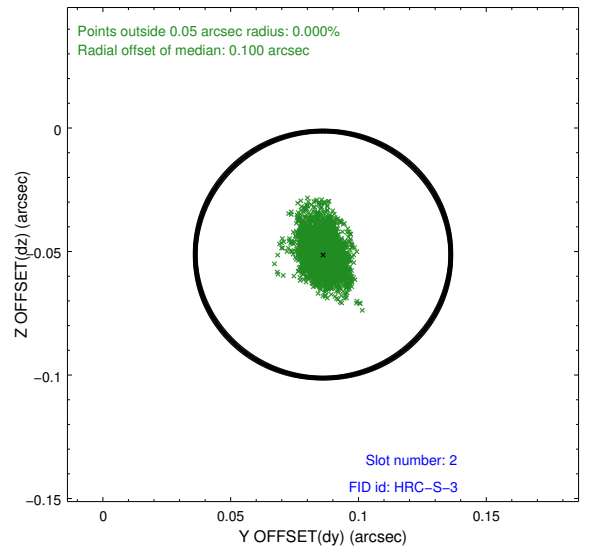
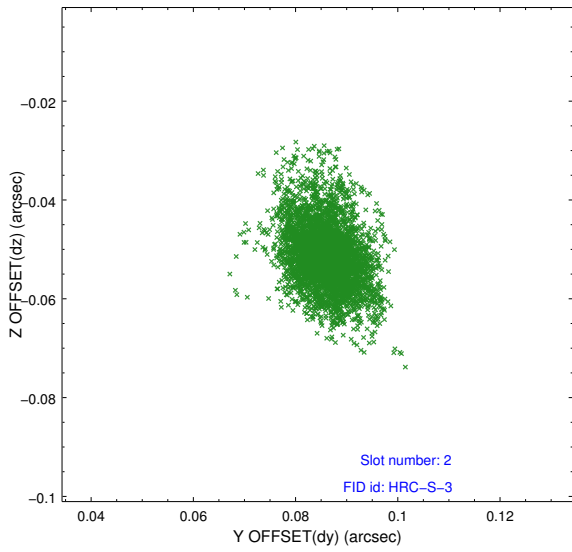
2.5.1 Slot 0



2.5.2 Slot 1



2.5.3 Slot 2



A Summary

A.1 Status

V&V Scientist	Beth Sundheim
V&V Date (YYYY-MM-DD)	2013.07.01
V&V Edition	1
V&V Disposition and Status	OK
V&V Charge Time	16.12863

A.2 Comments