

V&V Reference Report

L2 ASCDS Version : 8.4.5

Observation 729 - L2 Version 4
Chandra X-Ray Center

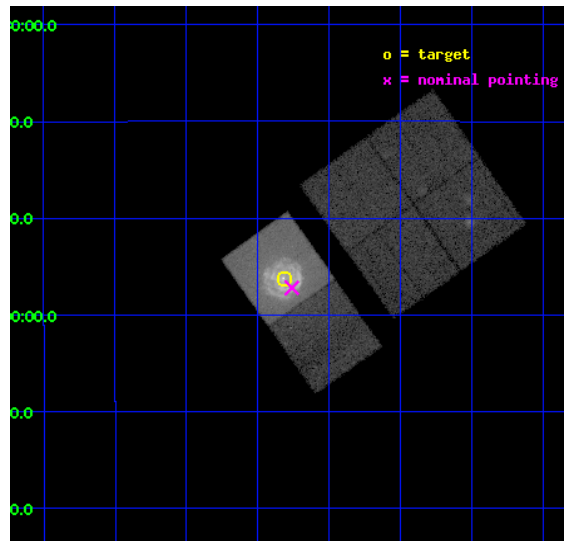
L2 Processing Date : Aug 30 2012

Contents

1	Front	2
2	OBI	3
2.1	OBI	3
2.1.1	Images	3
2.1.2	Bias	3
2.1.3	Parameters	4
2.1.4	Events	4
2.2	Compared Parameters	5
2.3	Aspect	6
2.4	Star Slots	9
2.4.1	Slot 3	9
2.4.2	Slot 4	10
2.4.3	Slot 5	11
2.4.4	Slot 6	12
2.4.5	Slot 7	13
2.5	FID Slots	14
2.5.1	Slot 0	14
2.5.2	Slot 1	15
2.5.3	Slot 2	16
A	Summary	17
A.1	Status	17
A.2	Comments	17

1 Front

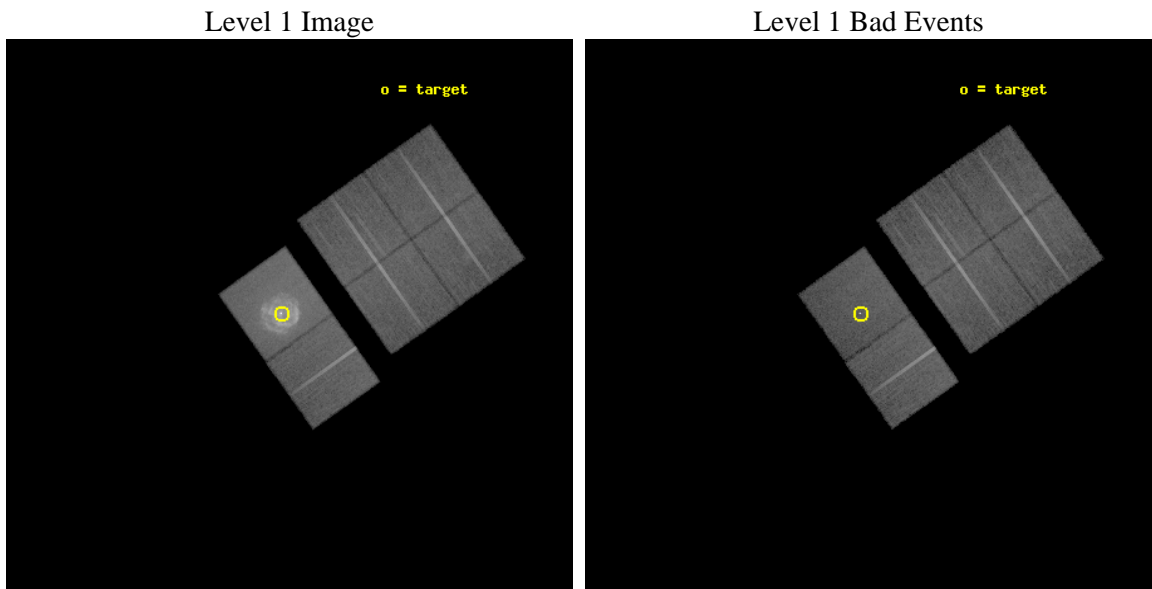
seq_num	500025	Sequence number
obs_id	729	Observation id
title	THE TORTOISE AND THE HARE: AN AXAF STUDY OF TWO COMPOSITE SUPERNOVA REMNANTS	Proposal title
observer	Dr. Patrick Slane	Principal investigator
object	KES 73	Source name
dtcycle	0	
cycle	P	events from which exps? Prim/Second/Both
ra_targ	280.329167	Observer's specified target RA [deg]
dec_targ	-4.937222	Observer's specified target Dec [deg]
ra_nom	280.31548498149	Nominal RA [deg]
dec_nom	-4.9532605552053	Nominal Dec [deg]
roll_nom	234.67095919958	Nominal Roll [deg]
revision	4	Processing version of data
ontime	29638.35501641	Sum of GTIs [s]
livetime	29263.056319118	Livetime [s]
ontime0	29638.396056414	Sum of GTIs [s]
ontime1	29638.190856412	Sum of GTIs [s]
ontime2	29638.231896415	Sum of GTIs [s]
ontime3	29638.272936419	Sum of GTIs [s]
ontime6	29638.313976407	Sum of GTIs [s]
ontime7	29638.35501641	Sum of GTIs [s]
l2events	327353	Number of level 2 events



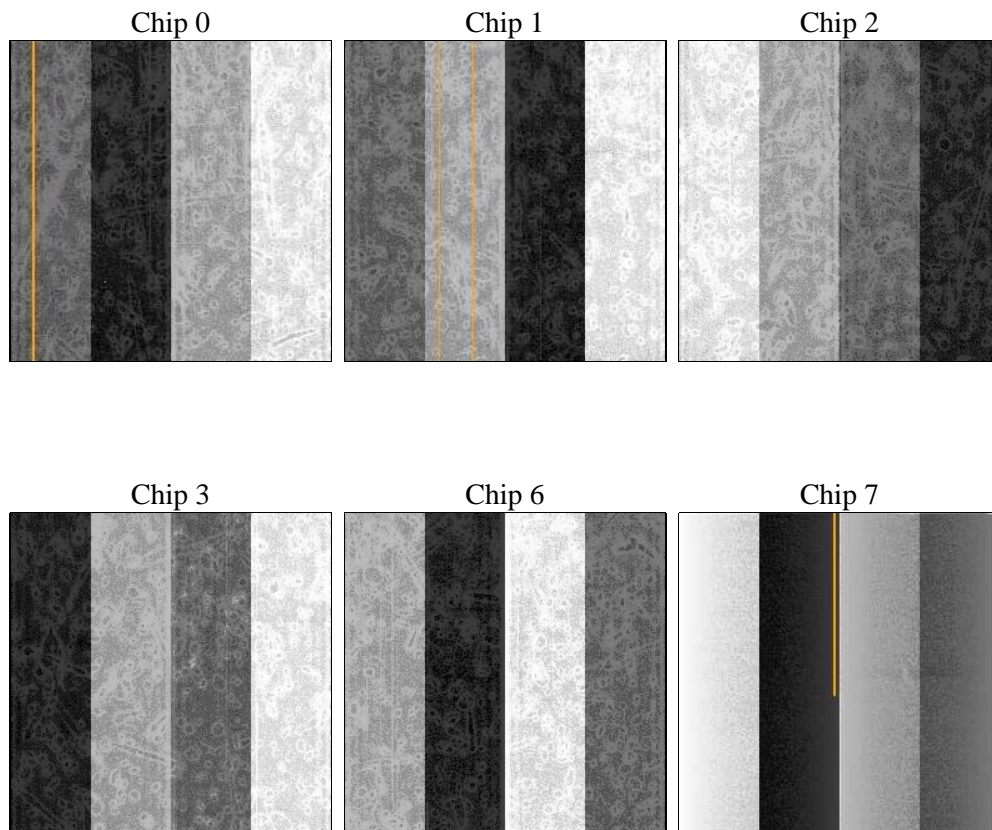
2 OBI

2.1 OBI

2.1.1 Images



2.1.2 Bias



2.1.3 Parameters

obi_num	1	Obi number	sched_exp_time	30000.000000	[s] Scheduled observation exposure time
ascdsver	8.4.5	Processing system revision	ontime	29638.35501641	Sum of GTIs [s]
caldbver	4.5.1.1	 	ontime0	29638.396056414	Sum of GTIs [s]
date	2012-08-30T18:56:12	Date and time of file creation	ontime1	29638.190856412	Sum of GTIs [s]
revision	4	Processing version of data	ontime2	29638.231896415	Sum of GTIs [s]
			ontime3	29638.272936419	Sum of GTIs [s]
			ontime6	29638.313976407	Sum of GTIs [s]
			ontime7	29638.35501641	Sum of GTIs [s]
			l1events	1163070	Number of level 1 events

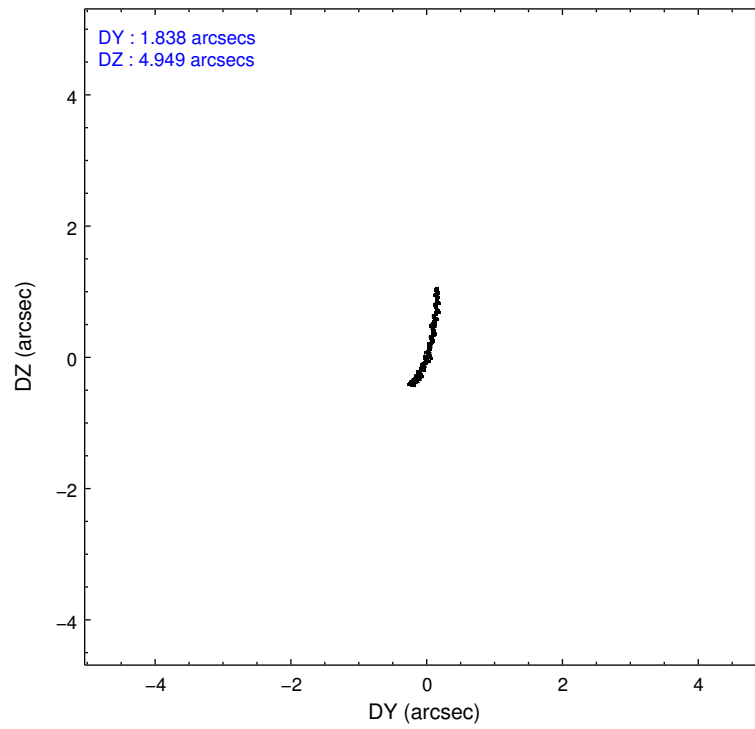
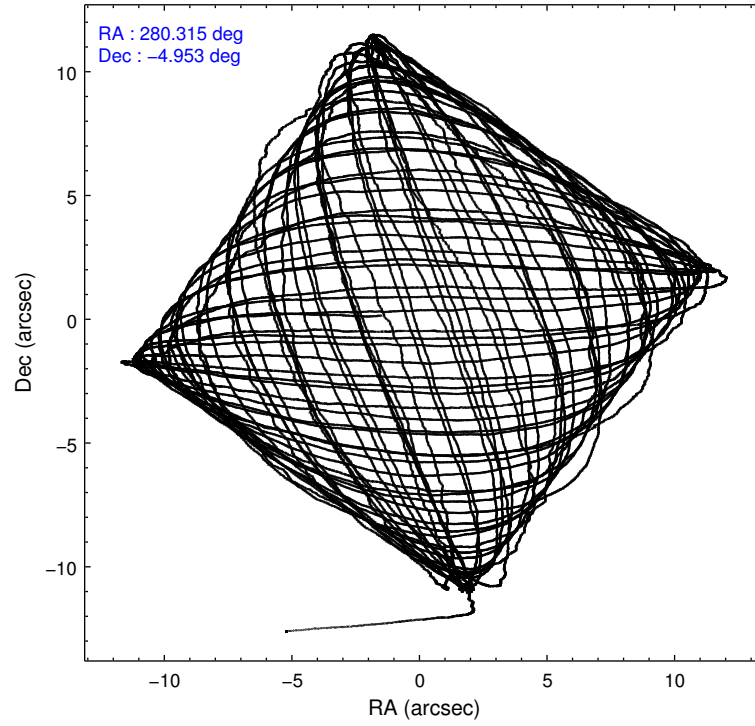
2.1.4 Events

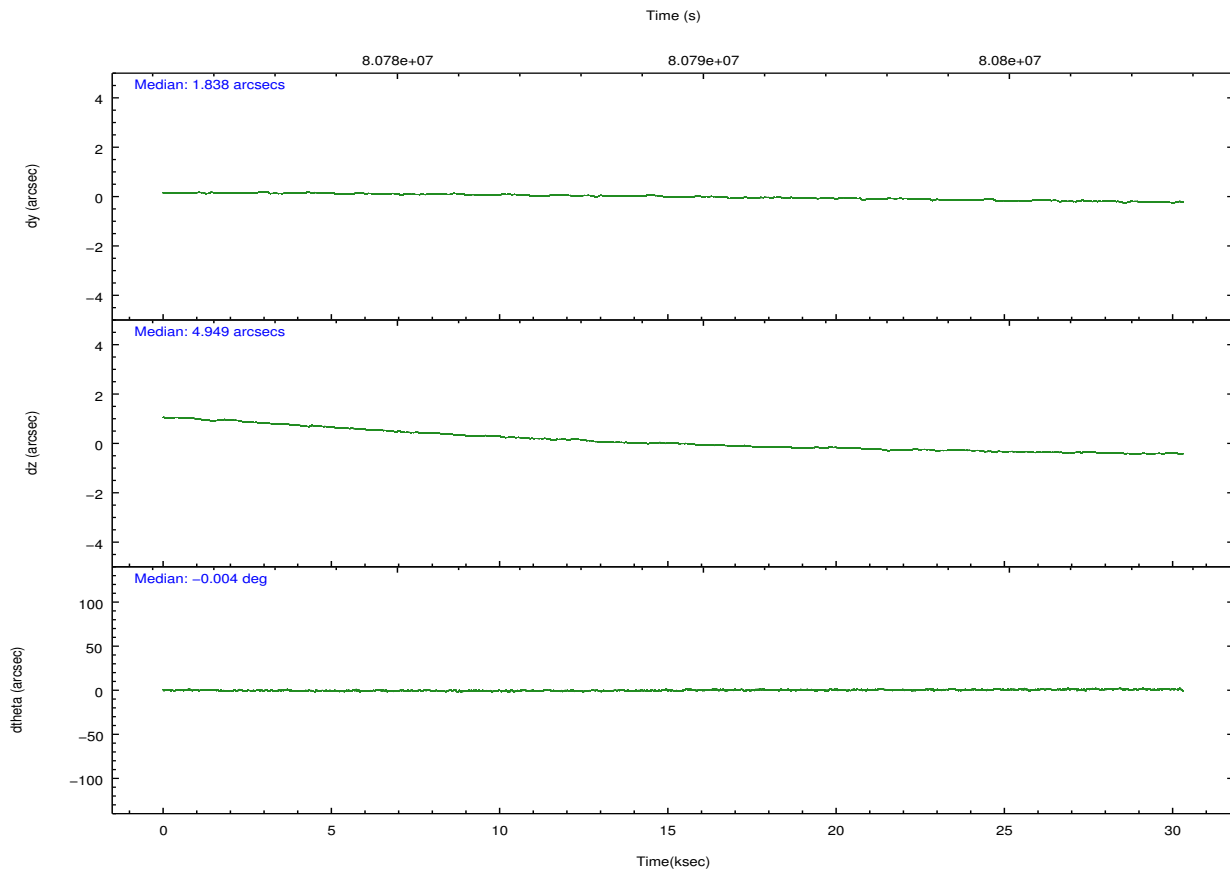
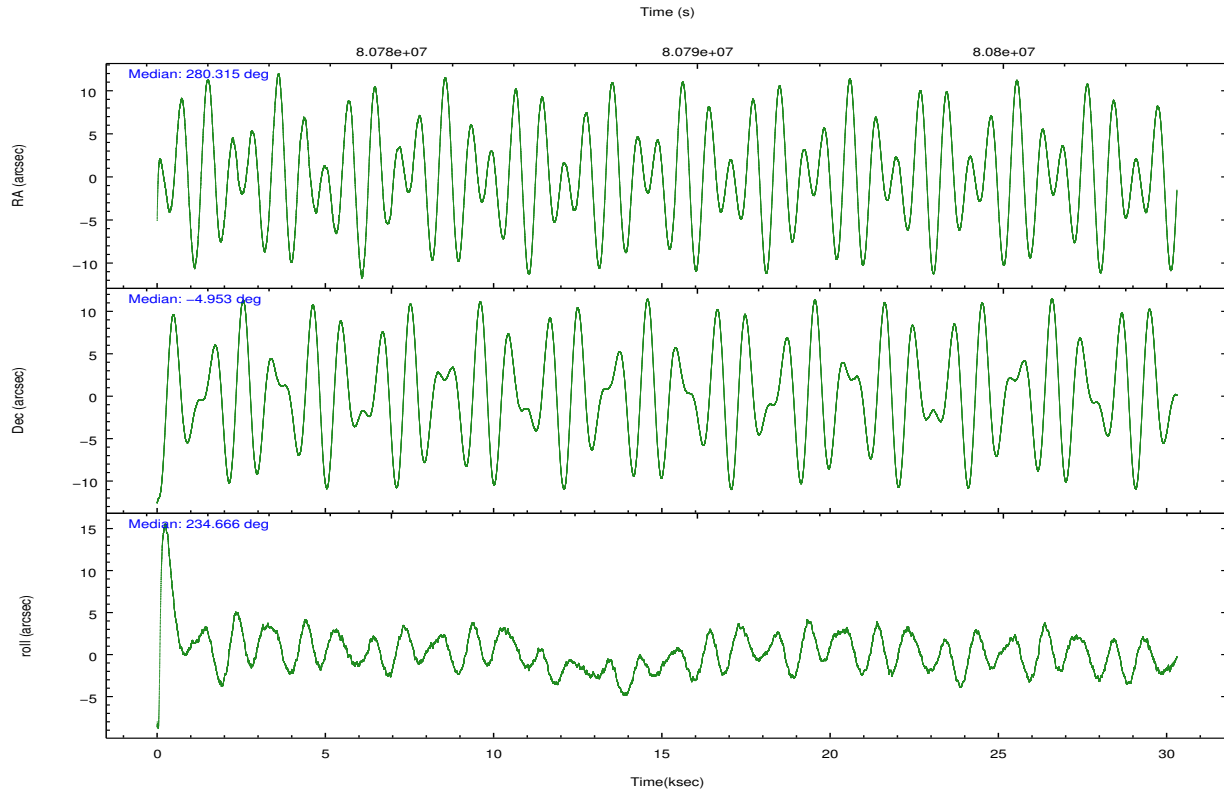
	ccd 0	ccd 1	ccd 2	ccd 3	ccd 6	ccd 7		ccd 0	ccd 1	ccd 2	ccd 3	ccd 6	ccd 7
level 1 events	157121	149011	163700	163152	172536	357550	grade 0 events	10540	9472	9800	10349	12426	44815
rejected events	135232	127741	143072	141842	147790	121735		6%	6%	5%	6%	7%	12%
rejected %	86%	85%	87%	86%	85%	34%	grade 1 events	81	72	79	81	103	478
								0%	0%	0%	0%	0%	0%
							grade 2 events	4177	3947	4049	3814	4330	56624
								2%	2%	2%	2%	2%	15%
							grade 3 events	1977	2039	1783	1934	2085	25746
								1%	1%	1%	1%	1%	7%
							grade 4 events	1901	2127	1781	1944	2021	25726
								1%	1%	1%	1%	1%	7%
							grade 5 events	5655	5876	5153	5916	6557	20975
								3%	3%	3%	3%	3%	5%
							grade 6 events	3295	3687	3215	3274	3888	82929
								2%	2%	1%	2%	2%	23%
							grade 7 events	129495	121791	137840	135840	141126	100257
								82%	81%	84%	83%	81%	28%

2.2 Compared Parameters

Parameter	Planned	Actual	Parameter	Planned	Actual
Instrument	ACIS	ACIS	Obspar format version number	7	7
Detector	ACIS-012367	ACIS-012367	Obspar file type	PREDICTED	ACTUAL
Grating	NONE	NONE	Obspar update status	NONE	UPDATED
Data mode	FAINT	FAINT	Number of optional ACIS chips dropped	0	0
Observation mode	POINTING	POINTING	On-chip summing requested	N	N
[deg] Pointing RA	280.317917	280.315484981486	Subarray requested	NONE	NONE
[deg] Pointing Dec	-4.925950	-4.953260555205314	Alternating exposures requested	N	N
[deg] Pointing Roll	234.514550	234.6709591995789	[s] Primary exposure time	0.000000	3.2
[mm] SIM focus pos	-0.684267	-0.6828225247311905			
[mm] SIM defocus	0	0.001444936568705701			
[mm] SIM translation stage pos	-190.132523	-190.1400660498719			
[mm] SIM translation stage offset	0	0.00754346686406393			
[s] Observation start time (MET)	80774000.184000	80772929.637795			
Observation start date	2000-07-23T21:12:16	2000-07-23T20:55:29			
[s] Observation end time (MET)	80804000.184000	80804815.33898			
Observation end date	2000-07-24T05:32:16	2000-07-24T05:46:55			
Read mode	TIMED	TIMED			

2.3 Aspect



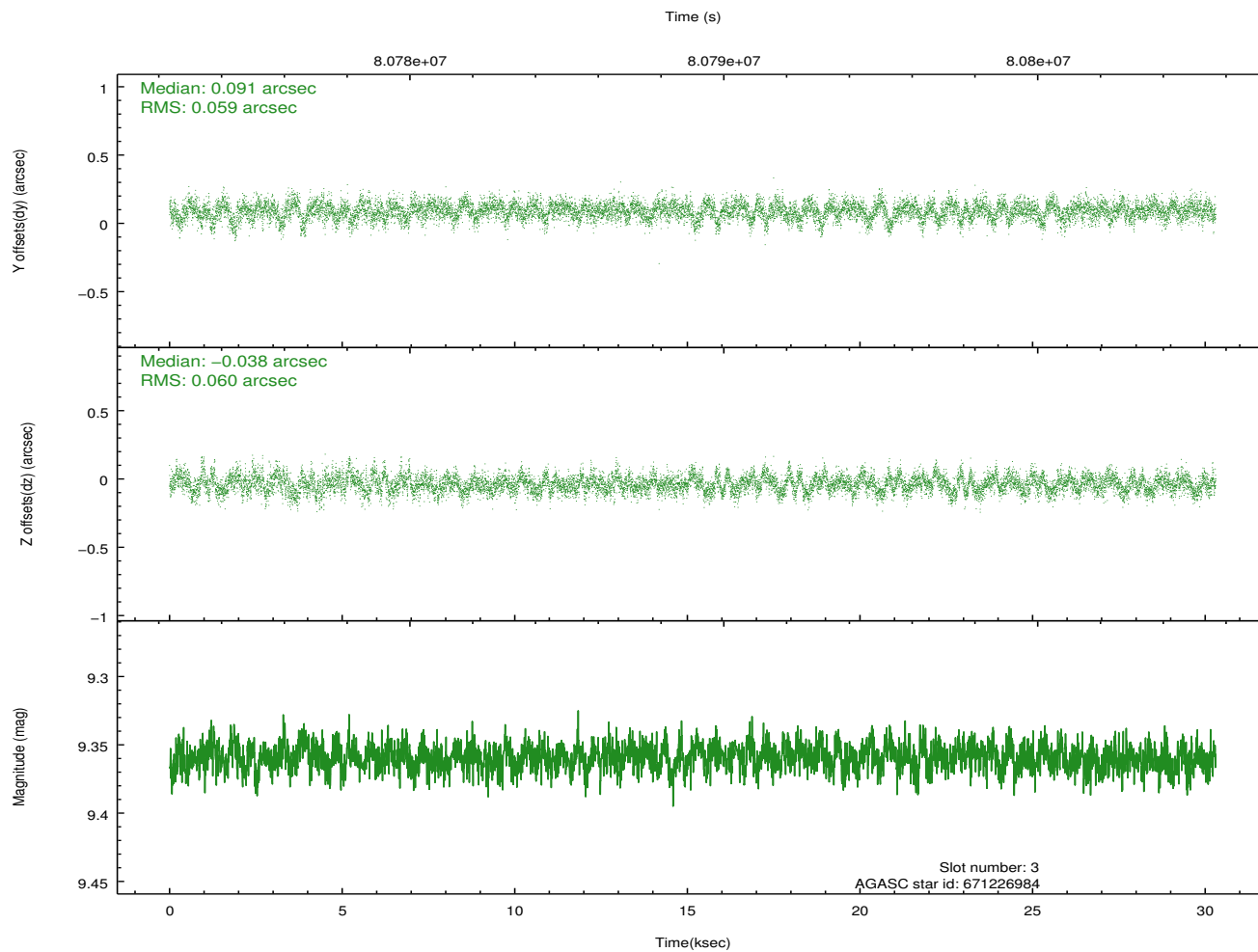
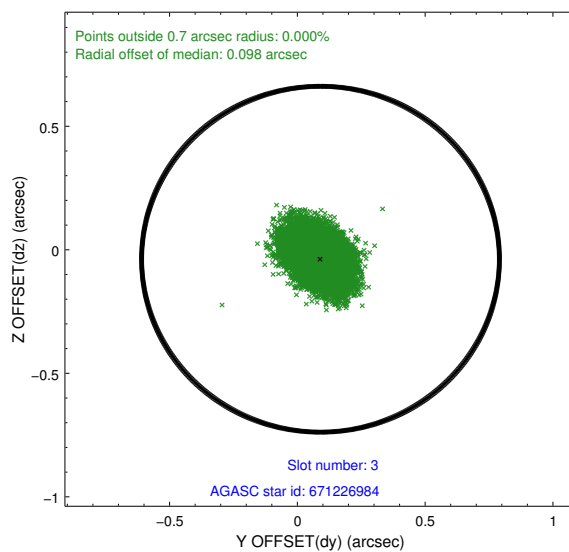
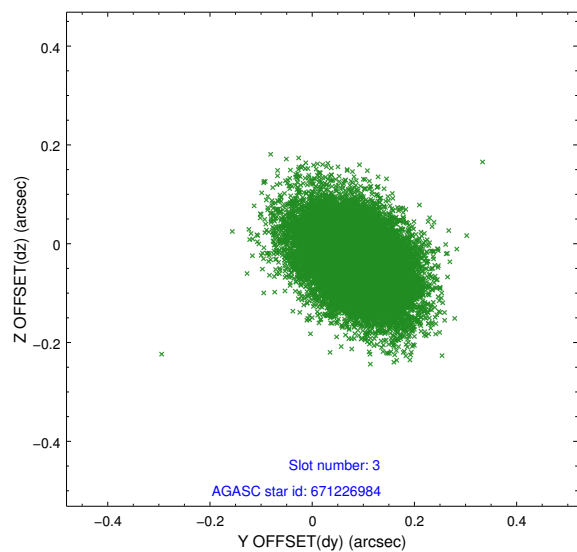


Slot Statistics

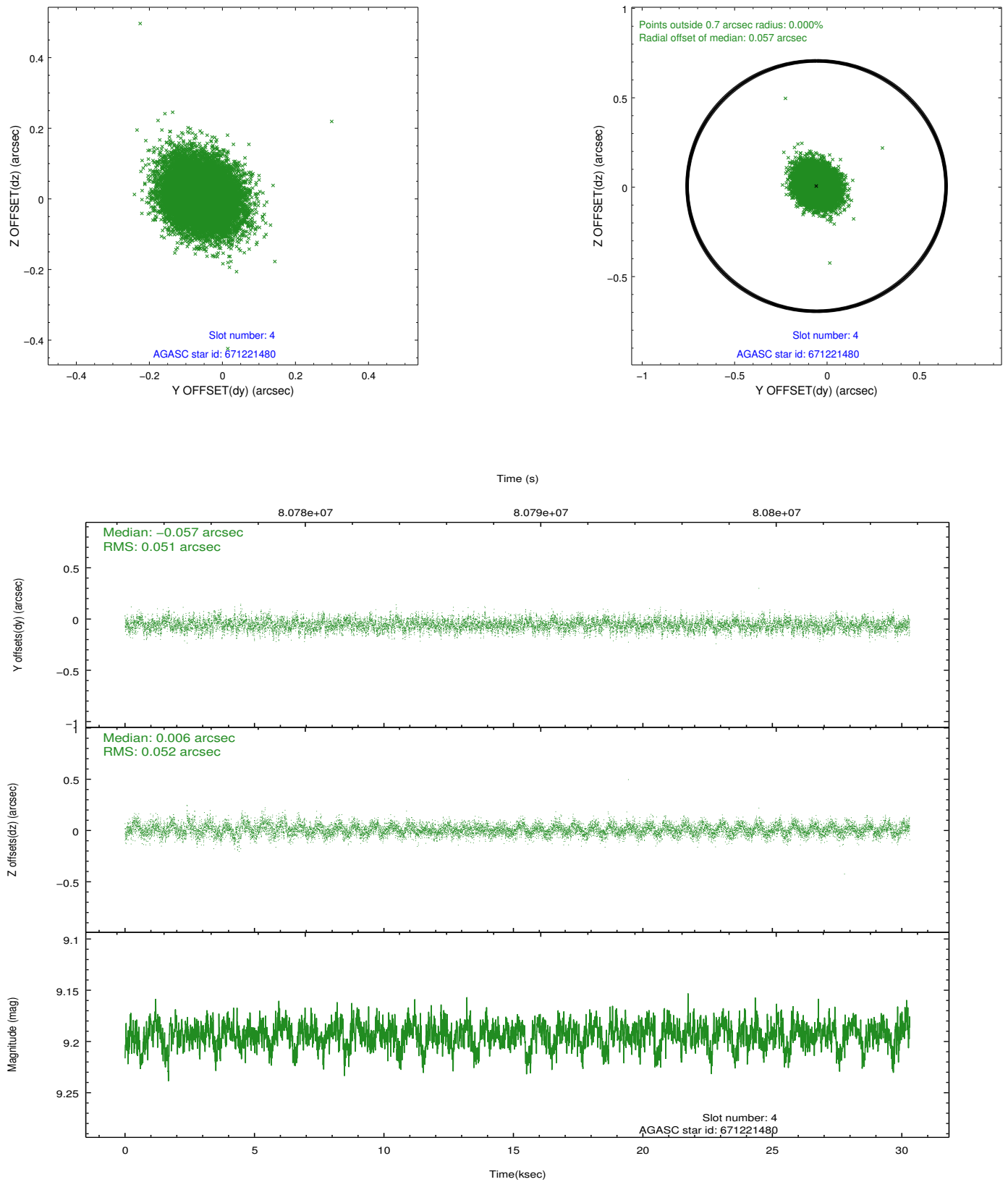
slot	status	id	mag	n_pts	med_dy	med_dz	dr1	dr2	ra	dec	mean_y	mean_z
0	FID	ACIS-S-2	7.11	7392	-0.020	-0.025	0.009	0.014	0.000000	0.000000	-754.45	-1726.20
1	FID	ACIS-S-4	7.21	7391	0.002	0.000	0.009	0.015	0.000000	0.000000	2158.81	182.25
2	FID	ACIS-S-6	7.35	7392	-0.010	0.032	0.014	0.022	0.000000	0.000000	407.62	819.75
3	GUIDE	671226984	9.36	14779	0.091	-0.038	0.088	0.149	280.194593	-5.352386	1506.89	532.02
4	GUIDE	671221480	9.19	14780	-0.057	0.006	0.077	0.126	280.711295	-4.815985	-1141.06	920.10
5	GUIDE	671223936	9.49	14779	-0.057	-0.026	0.102	0.169	280.598328	-4.808883	-926.98	575.18
6	GUIDE	671226624	9.34	14779	0.083	-0.034	0.130	0.222	279.514679	-4.922399	1663.88	-2351.51
7	GUIDE	671227648	9.80	14773	-0.054	0.086	0.103	0.168	280.513174	-4.545518	-1521.62	-223.96

2.4 Star Slots

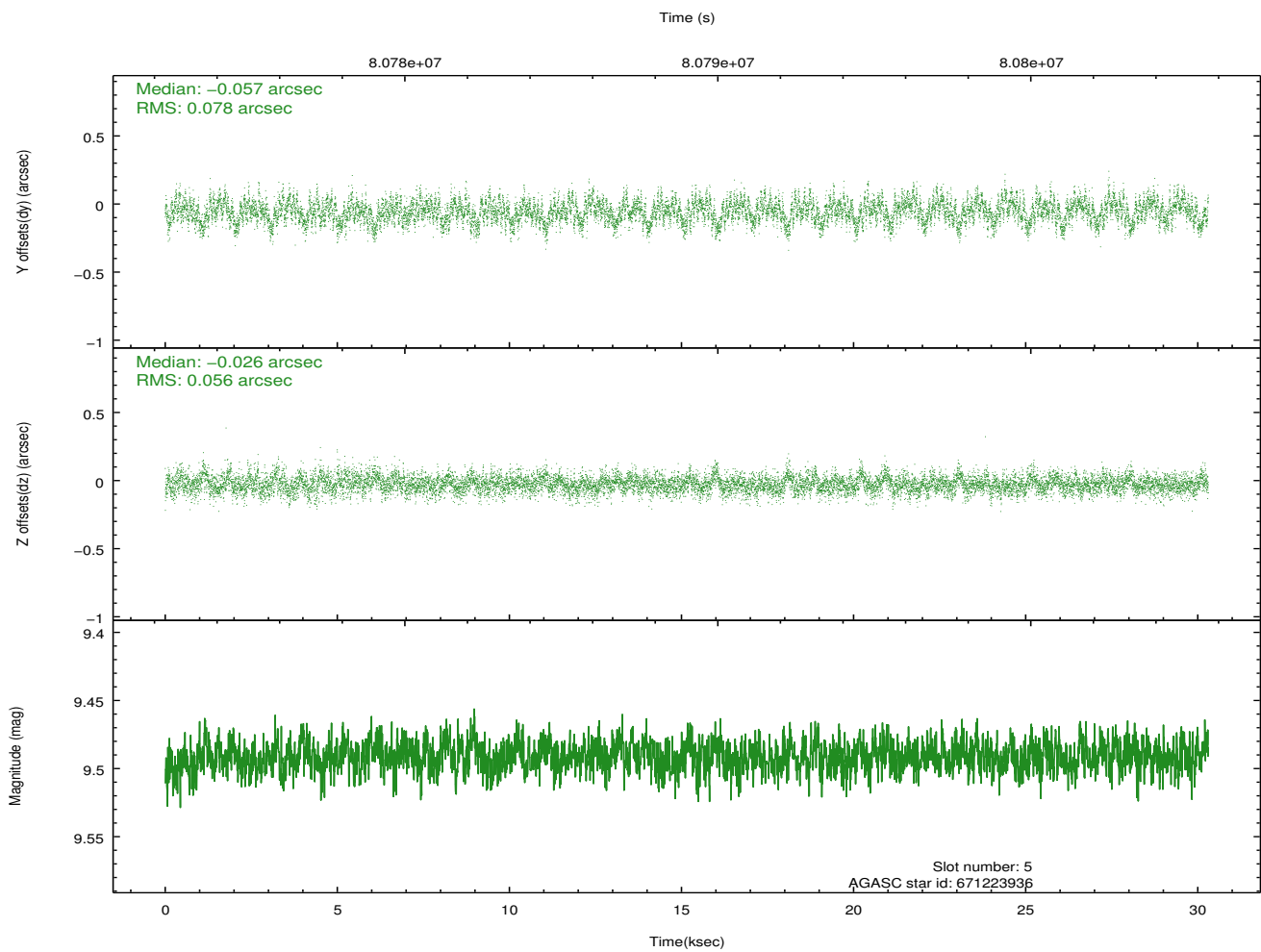
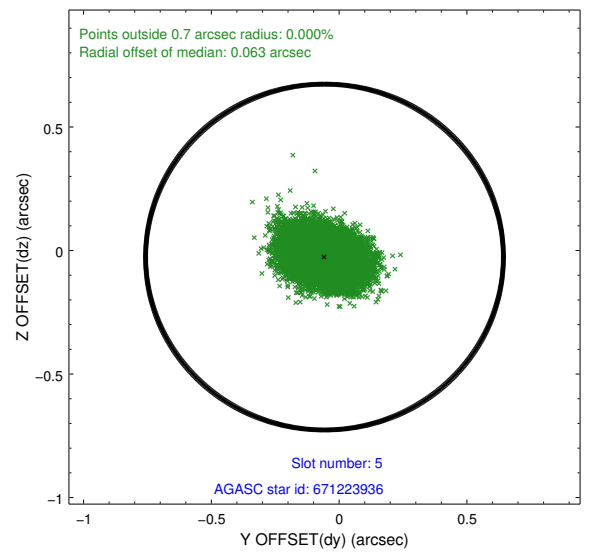
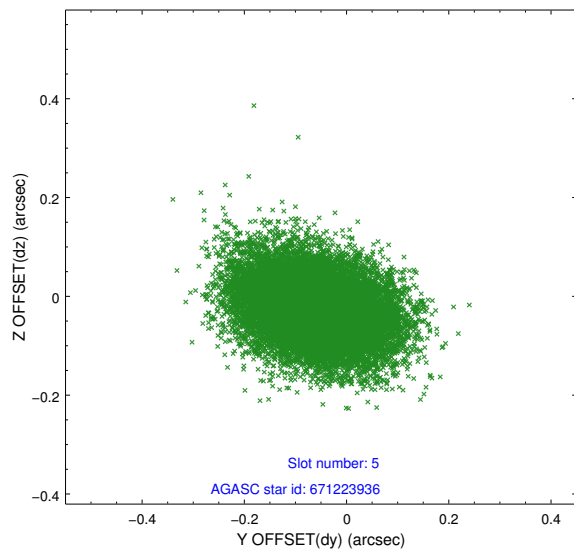
2.4.1 Slot 3



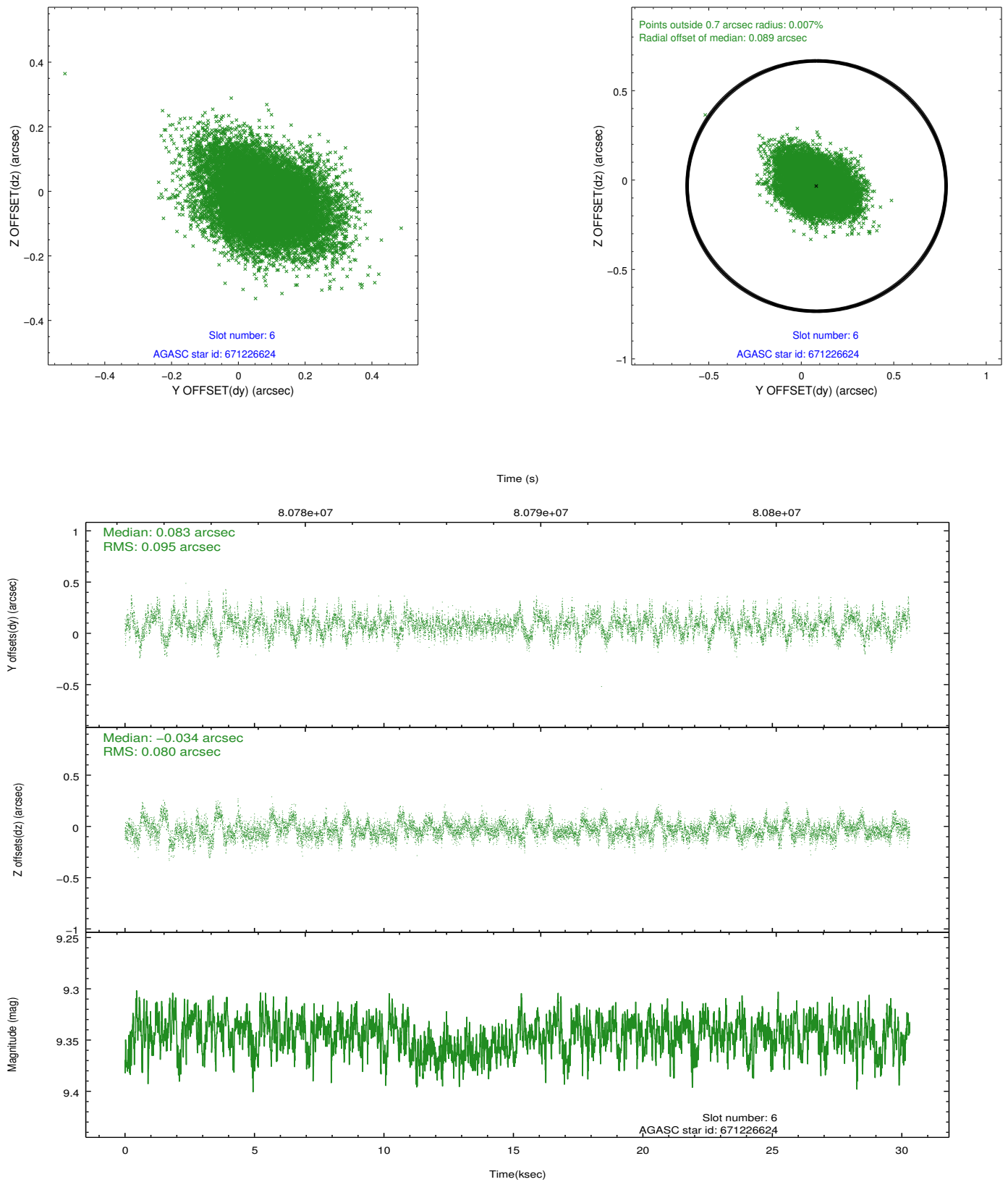
2.4.2 Slot 4



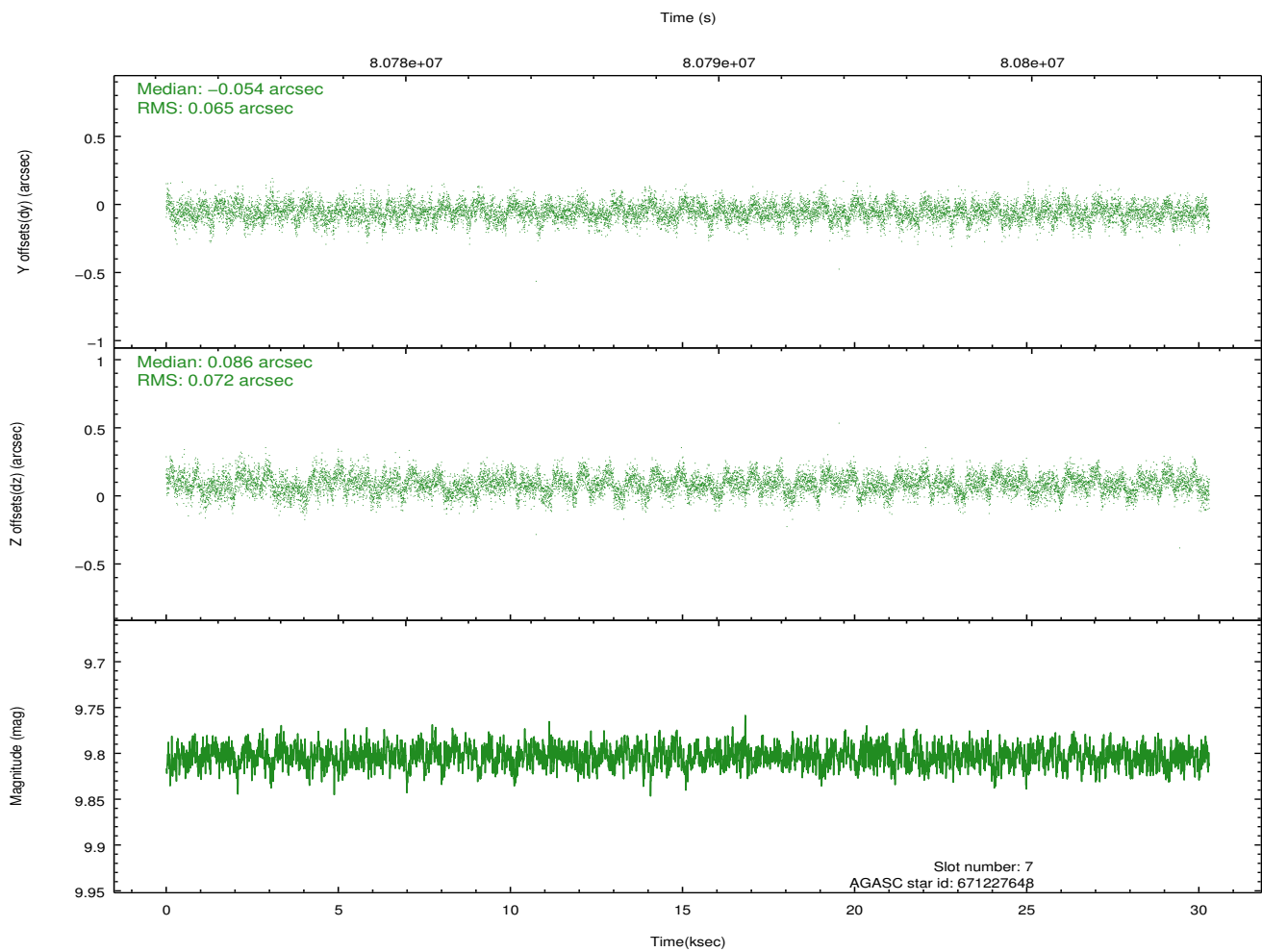
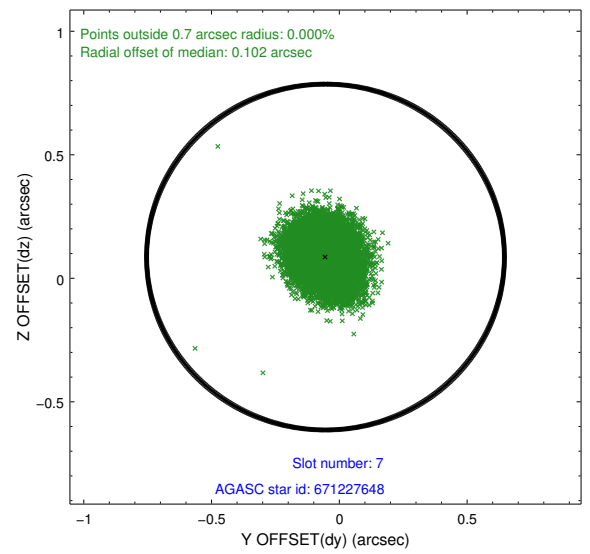
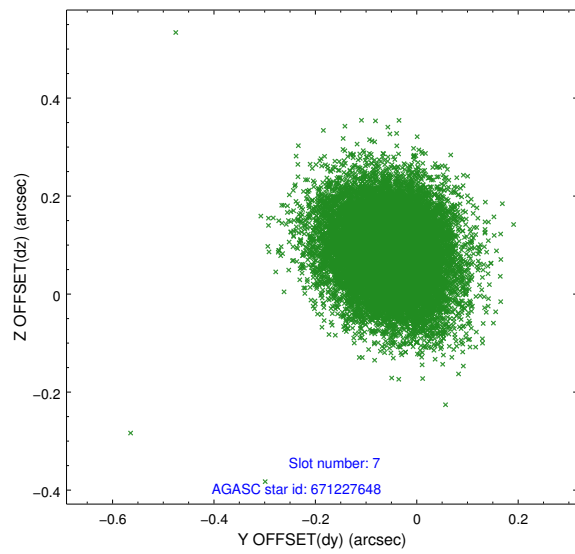
2.4.3 Slot 5



2.4.4 Slot 6

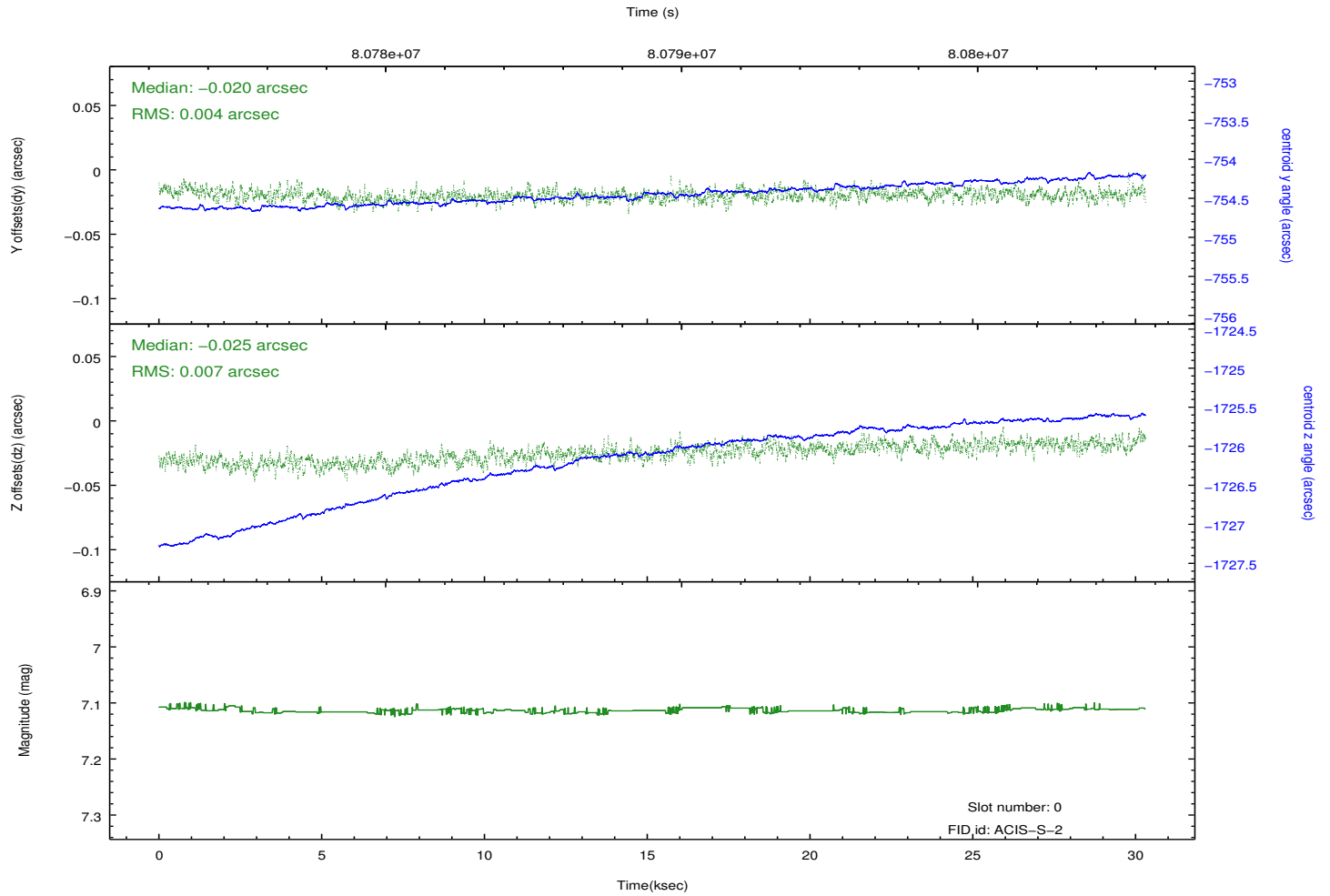
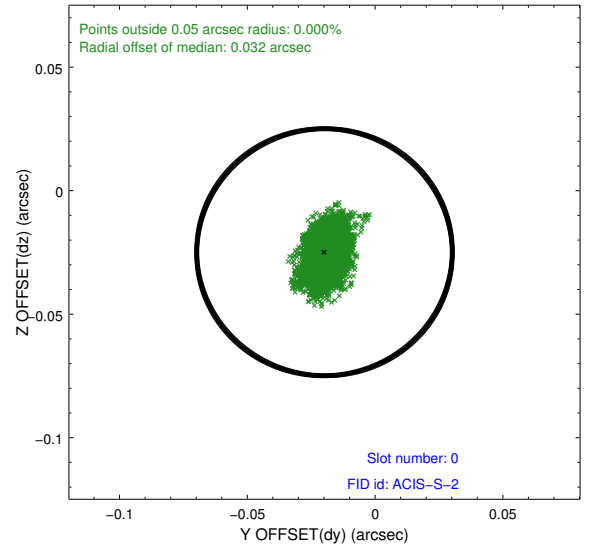
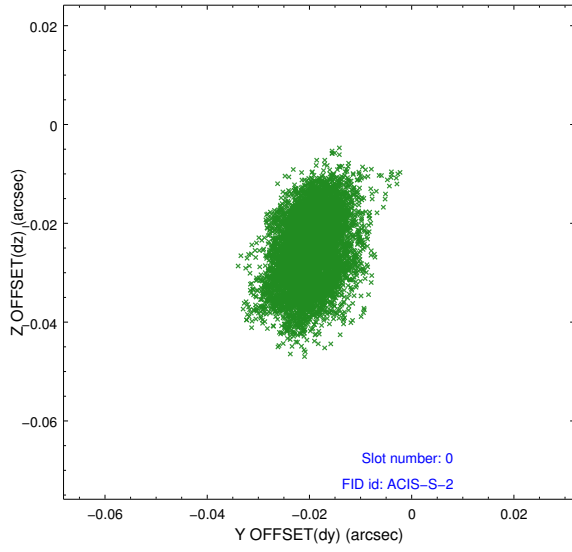


2.4.5 Slot 7

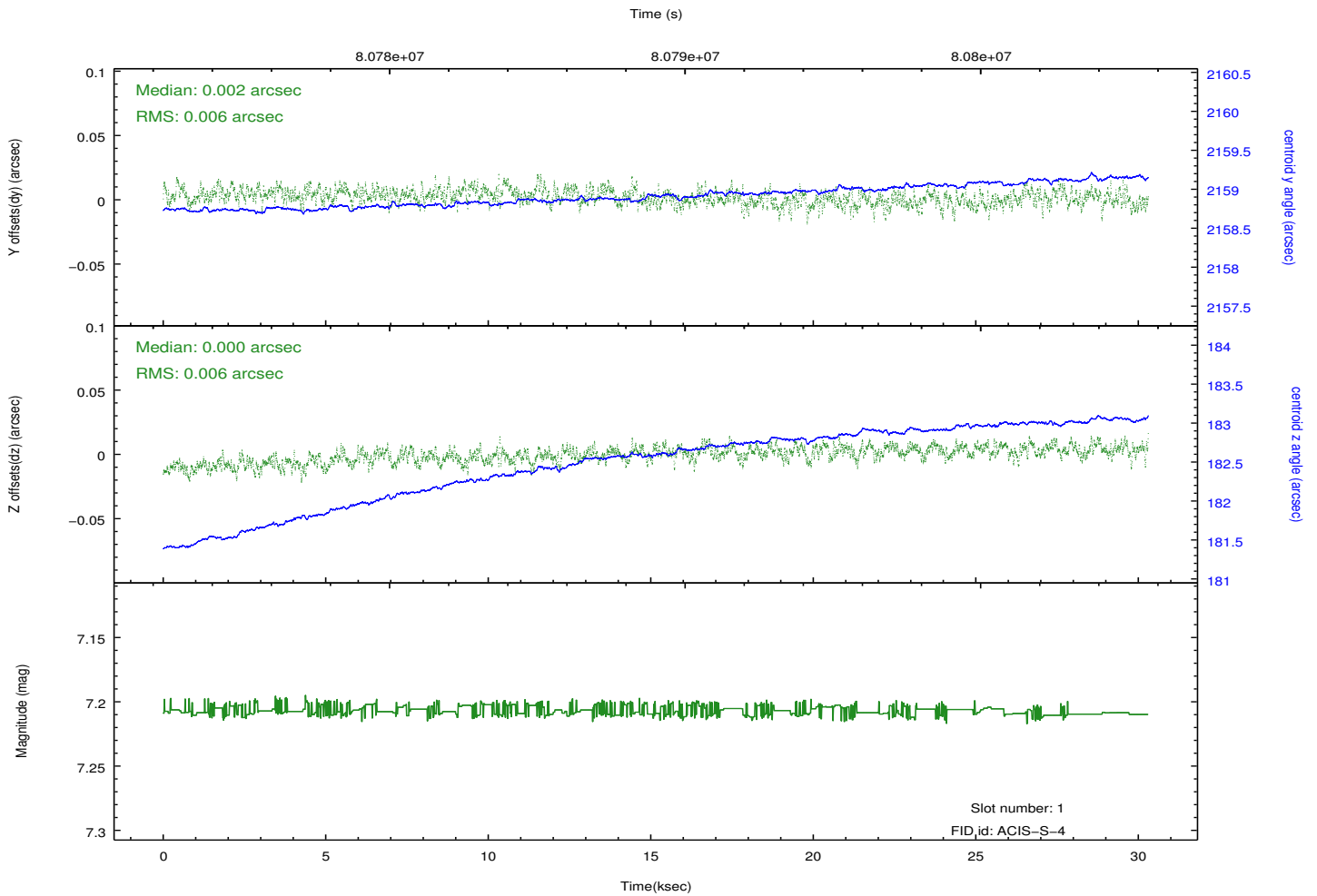
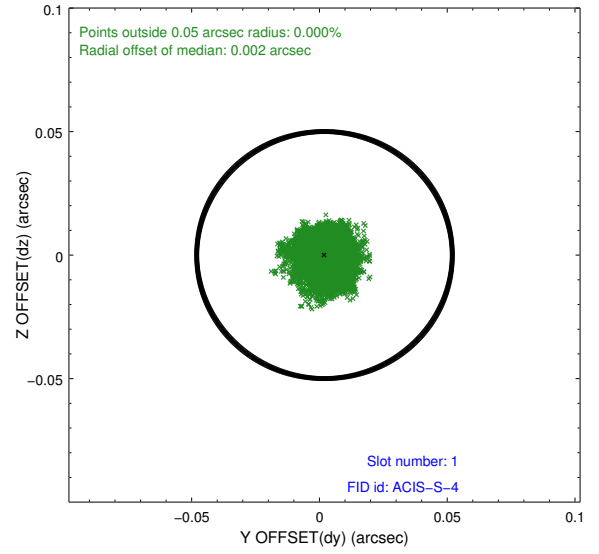
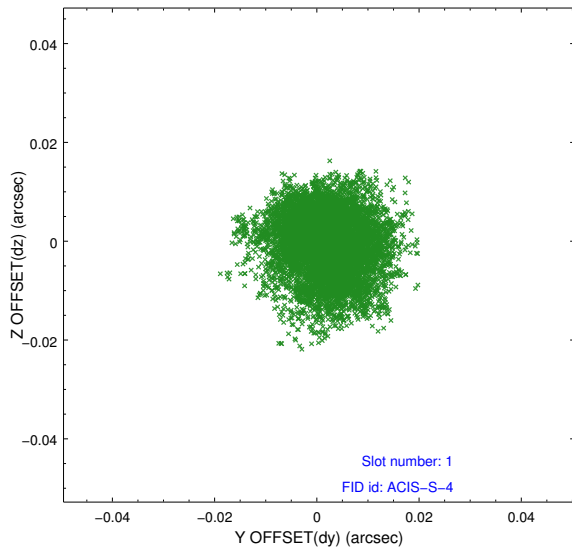


2.5 FID Slots

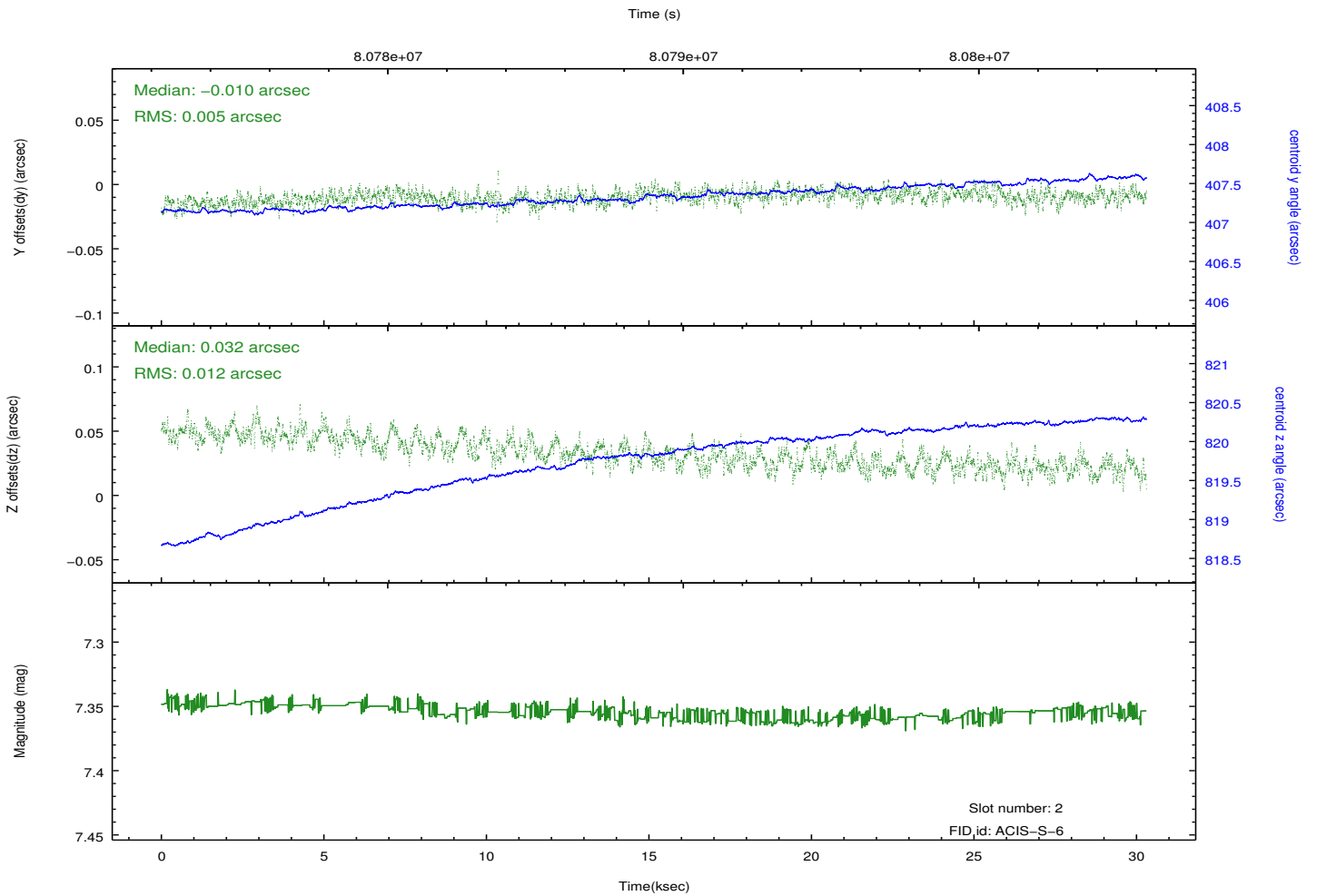
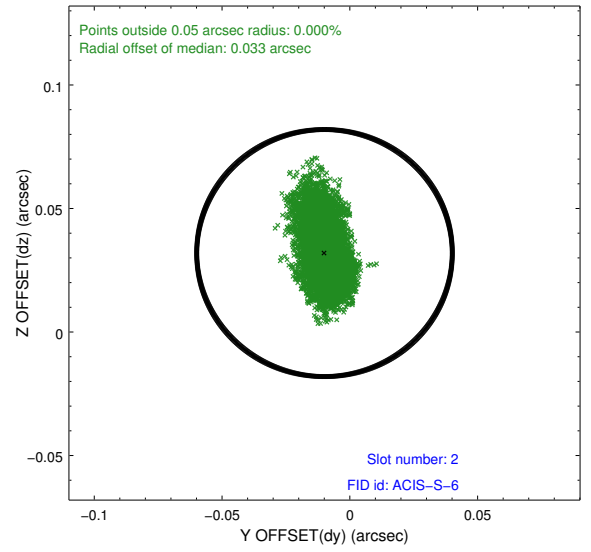
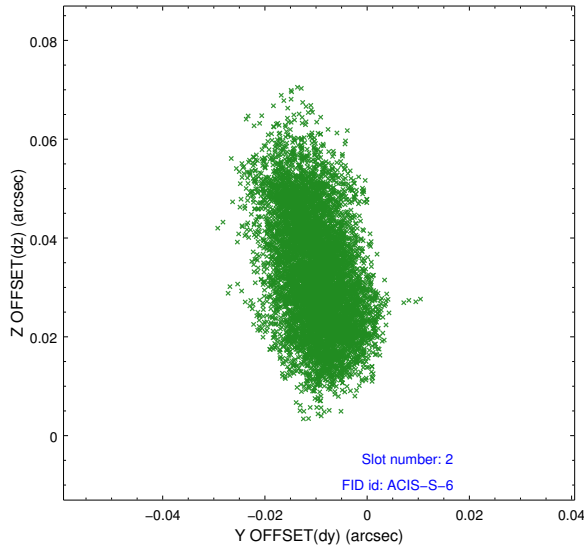
2.5.1 Slot 0



2.5.2 Slot 1



2.5.3 Slot 2



A Summary

A.1 Status

V&V Scientist	Jen Lauer
V&V Date (YYYY-MM-DD)	2012.09.04
V&V Edition	1
V&V Disposition and Status	OK
V&V Charge Time	29.644

A.2 Comments