

V&V Reference Report

L2 ASCDS Version : 8.4.5

Observation 739 - L2 Version 3
Chandra X-Ray Center

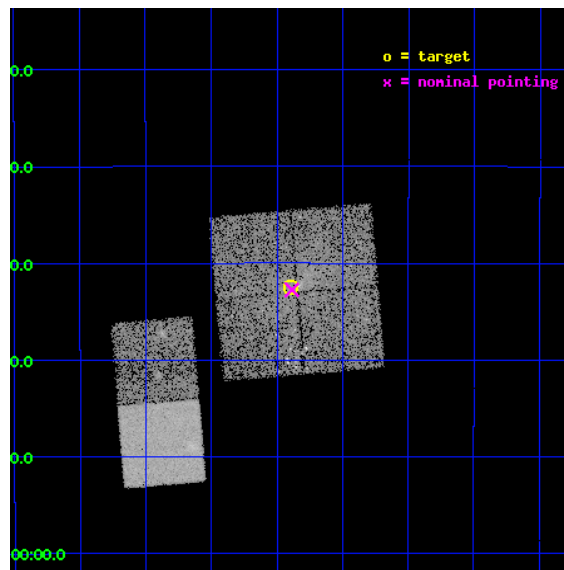
L2 Processing Date : Aug 31 2012

Contents

1	Front	2
2	OBI	3
2.1	OBI	3
2.1.1	Images	3
2.1.2	Bias	3
2.1.3	Parameters	4
2.1.4	Events	4
2.2	Compared Parameters	5
2.3	Aspect	6
2.4	Star Slots	9
2.4.1	Slot 3	9
2.4.2	Slot 4	10
2.4.3	Slot 5	11
2.4.4	Slot 6	12
2.4.5	Slot 7	13
2.5	FID Slots	14
2.5.1	Slot 0	14
2.5.2	Slot 1	15
2.5.3	Slot 2	16
A	Summary	17
A.1	Status	17
A.2	Comments	17

1 Front

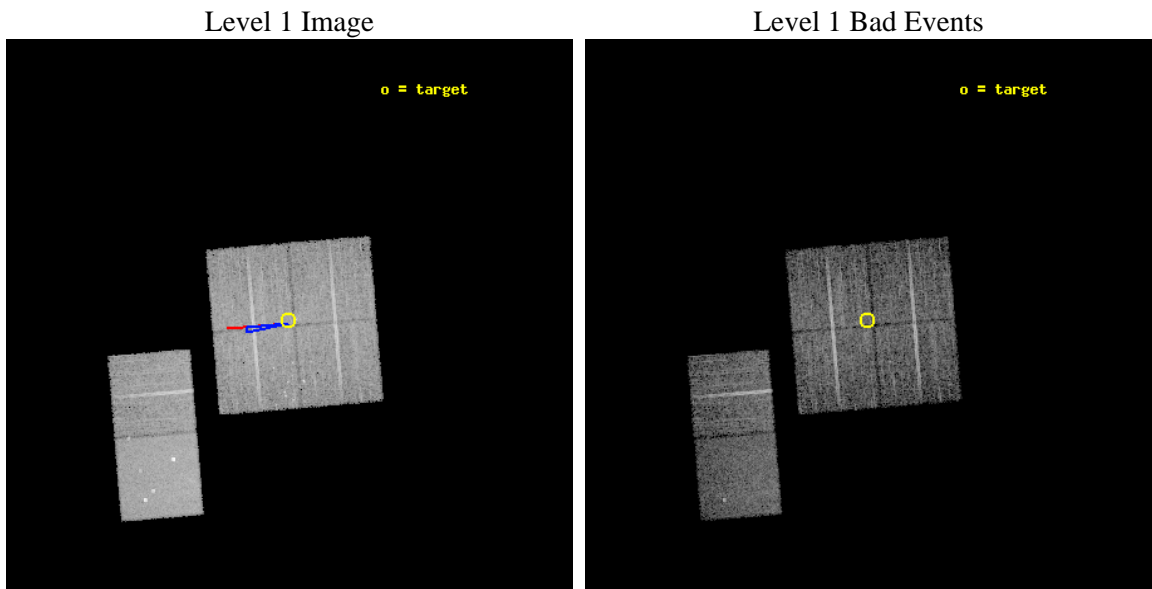
seq_num	500035	Sequence number
obs_id	739	Observation id
title	THE ENVIRONMENT AND X-RAY COUNTERPART OF 2EG J1811-2339	Proposal t
observer	Prof. Roger Romani	Principal investigator
object	2EG J1811-2339	Source name
dtcycle	0	
cycle	P	events from which exps? Prim/Second/Both
ra_targ	272.474167	Observer's specified target RA [deg]
dec_targ	-23.541667	Observer's specified target Dec [deg]
ra_nom	272.47166291362	Nominal RA [deg]
dec_nom	-23.54601016844	Nominal Dec [deg]
roll_nom	265.20768884874	Nominal Roll [deg]
revision	3	Processing version of data
ontime	9819.5159493238	Sum of GTIs [s]
livetime	9695.1753257708	Livetime [s]
ontime0	9819.3928293288	Sum of GTIs [s]
ontime1	9819.4338693321	Sum of GTIs [s]
ontime2	9819.4749093354	Sum of GTIs [s]
ontime3	9819.5159493238	Sum of GTIs [s]
ontime5	9819.5569893271	Sum of GTIs [s]
ontime6	9819.5980293304	Sum of GTIs [s]
l2events	73326	Number of level 2 events



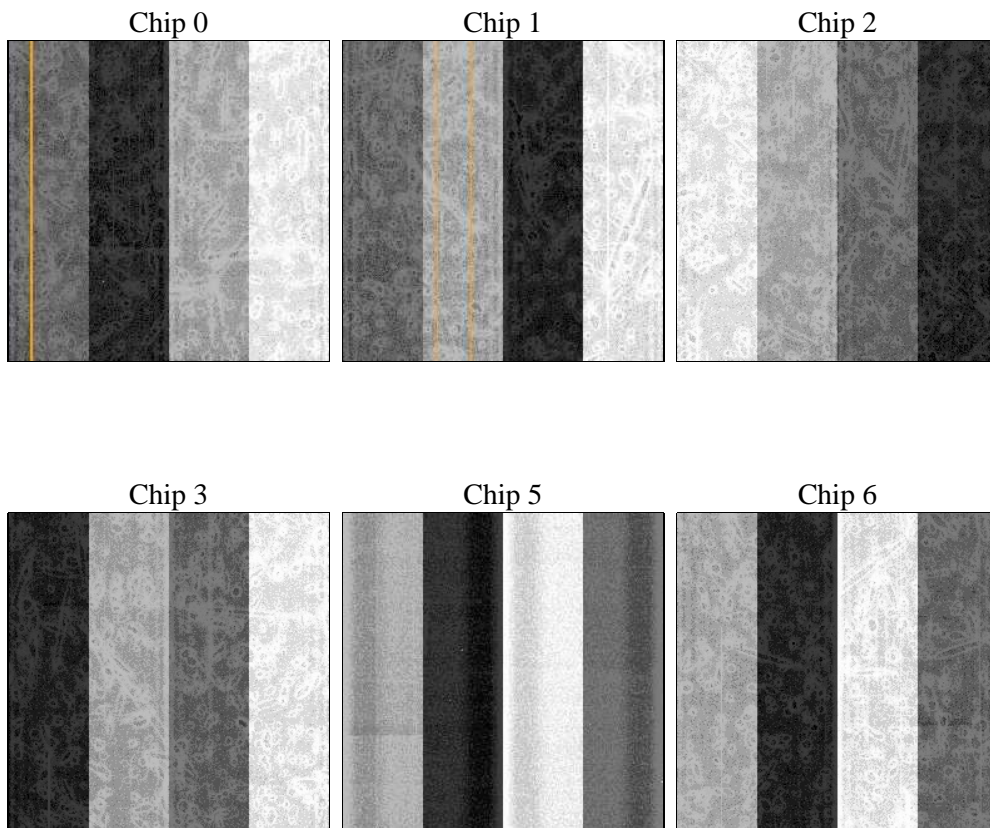
2 OBI

2.1 OBI

2.1.1 Images



2.1.2 Bias



2.1.3 Parameters

obi_num	0	Obi number	sched_exp_time	9850.000000	[s] Scheduled observation exposure time
ascdsver	8.4.5	Processing system revision	ontime	9819.5159493238	Sum of GTIs [s]
caldbver	4.5.1.1	 	ontime0	9819.3928293288	Sum of GTIs [s]
date	2012-08-31T12:36:43	Date and time of file creation	ontime1	9819.4338693321	Sum of GTIs [s]
revision	3	Processing version of data	ontime2	9819.4749093354	Sum of GTIs [s]
			ontime3	9819.5159493238	Sum of GTIs [s]
			ontime5	9819.5569893271	Sum of GTIs [s]
			ontime6	9819.5980293304	Sum of GTIs [s]
			l1events	354529	Number of level 1 events

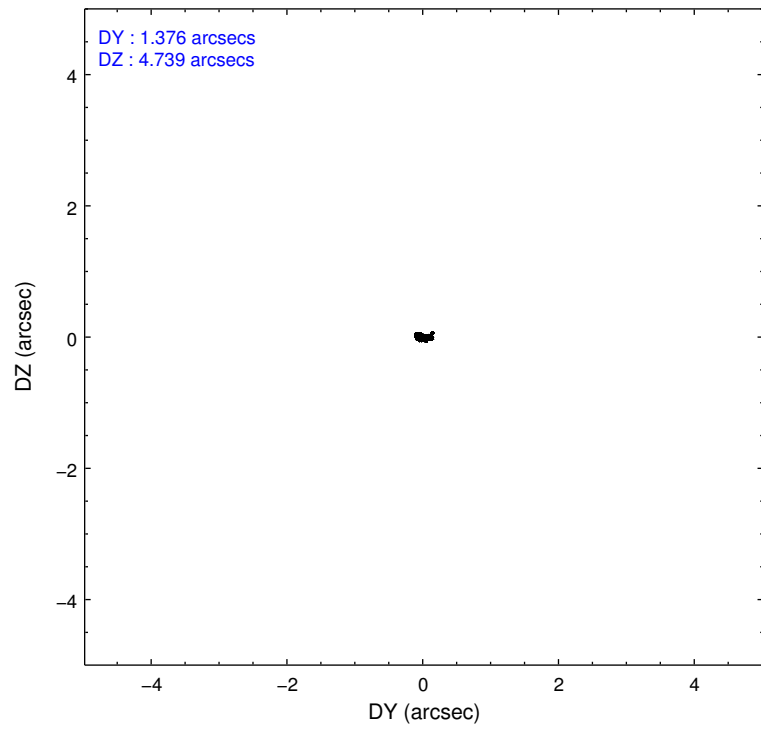
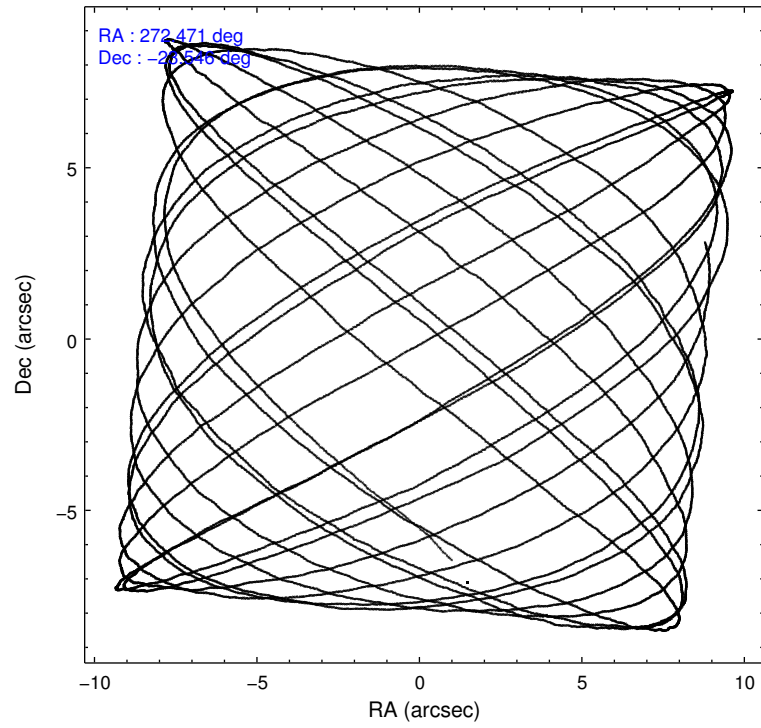
2.1.4 Events

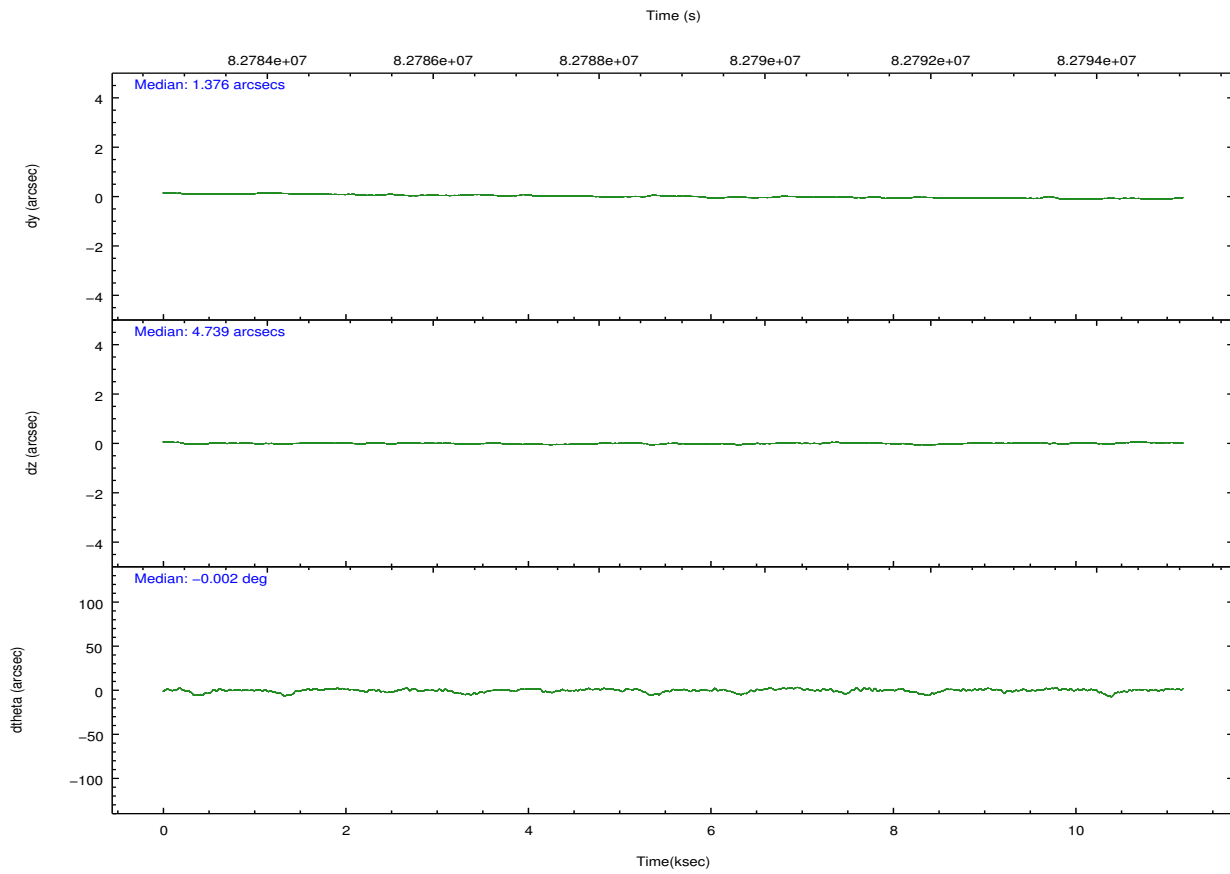
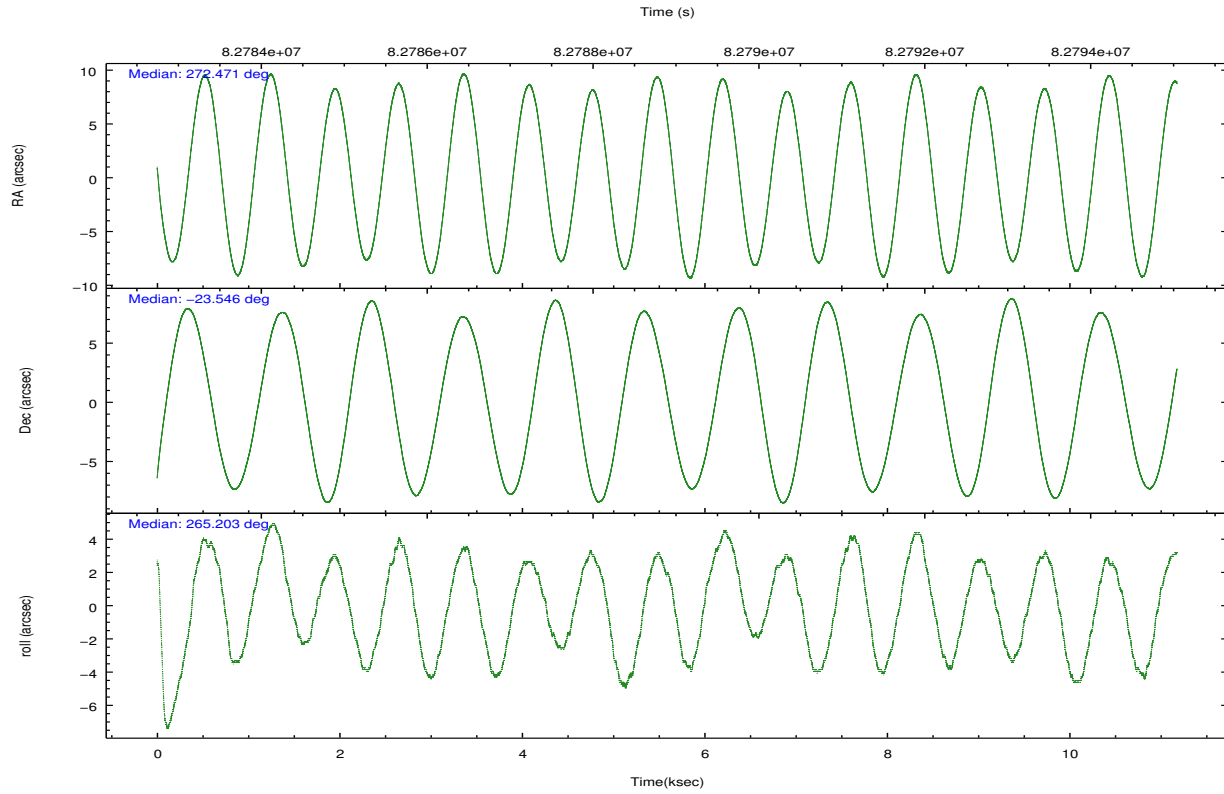
	ccd 0	ccd 1	ccd 2	ccd 3	ccd 5	ccd 6		ccd 0	ccd 1	ccd 2	ccd 3	ccd 5	ccd 6
level 1 events	51611	52005	57641	56788	79250	57234	grade 0 events	4938	5264	5276	3990	5955	3720
rejected events	42216	41890	47867	48599	41218	49244		9%	10%	9%	7%	7%	6%
rejected %	81%	80%	83%	85%	52%	86%	grade 1 events	25	42	22	24	102	30
								0%	0%	0%	0%	0%	0%
							grade 2 events	1773	1800	1829	1601	10914	1562
								3%	3%	3%	2%	13%	2%
							grade 3 events	678	794	662	646	1661	688
								1%	1%	1%	1%	2%	1%
							grade 4 events	688	836	686	674	1579	652
								1%	1%	1%	1%	1%	1%
							grade 5 events	1877	2001	1766	2032	5606	2234
								3%	3%	3%	3%	7%	3%
							grade 6 events	1324	1425	1324	1284	17936	1371
								2%	2%	2%	2%	22%	2%
							grade 7 events	40308	39843	46076	46537	35497	46977
								78%	76%	79%	81%	44%	82%

2.2 Compared Parameters

Parameter	Planned	Actual	Parameter	Planned	Actual
Instrument	ACIS	ACIS	Obspar format version number	7	7
Detector	ACIS-012356	ACIS-012356	Obspar file type	PREDICTED	ACTUAL
Grating	NONE	NONE	Obspar update status	NONE	UPDATED
Data mode	FAINT	FAINT	Number of optional ACIS chips dropped	0	0
Observation mode	POINTING	POINTING	On-chip summing requested	N	N
[deg] Pointing RA	272.458983	272.4716629136174	Subarray requested	NONE	NONE
[deg] Pointing Dec	-23.521039	-23.54601016843962	Alternating exposures requested	N	N
[deg] Pointing Roll	264.993939	265.2076888487425	[s] Primary exposure time	0.000000	3.2
[deg] Roll angle	261.000000	261.000000			
[deg] Roll tolerance	4.000000	4.000000			
Roll constraint allows 180D rotation	N	N			
[mm] SIM focus pos	-0.782348	-0.7809083437167272			
[mm] SIM defocus	0	0.001439871863259334			
[mm] SIM translation stage pos	-233.592463	-233.5874344608287			
[mm] SIM translation stage offset	0	-0.005018542100998502			
[s] Observation start time (MET)	82784626.184000	82783006.98769701			
Observation start date	2000-08-16T03:42:42	2000-08-16T03:16:46			
[s] Observation end time (MET)	82794476.184000	82795769.775675			
Observation end date	2000-08-16T06:26:52	2000-08-16T06:49:29			
Read mode	TIMED	TIMED			

2.3 Aspect



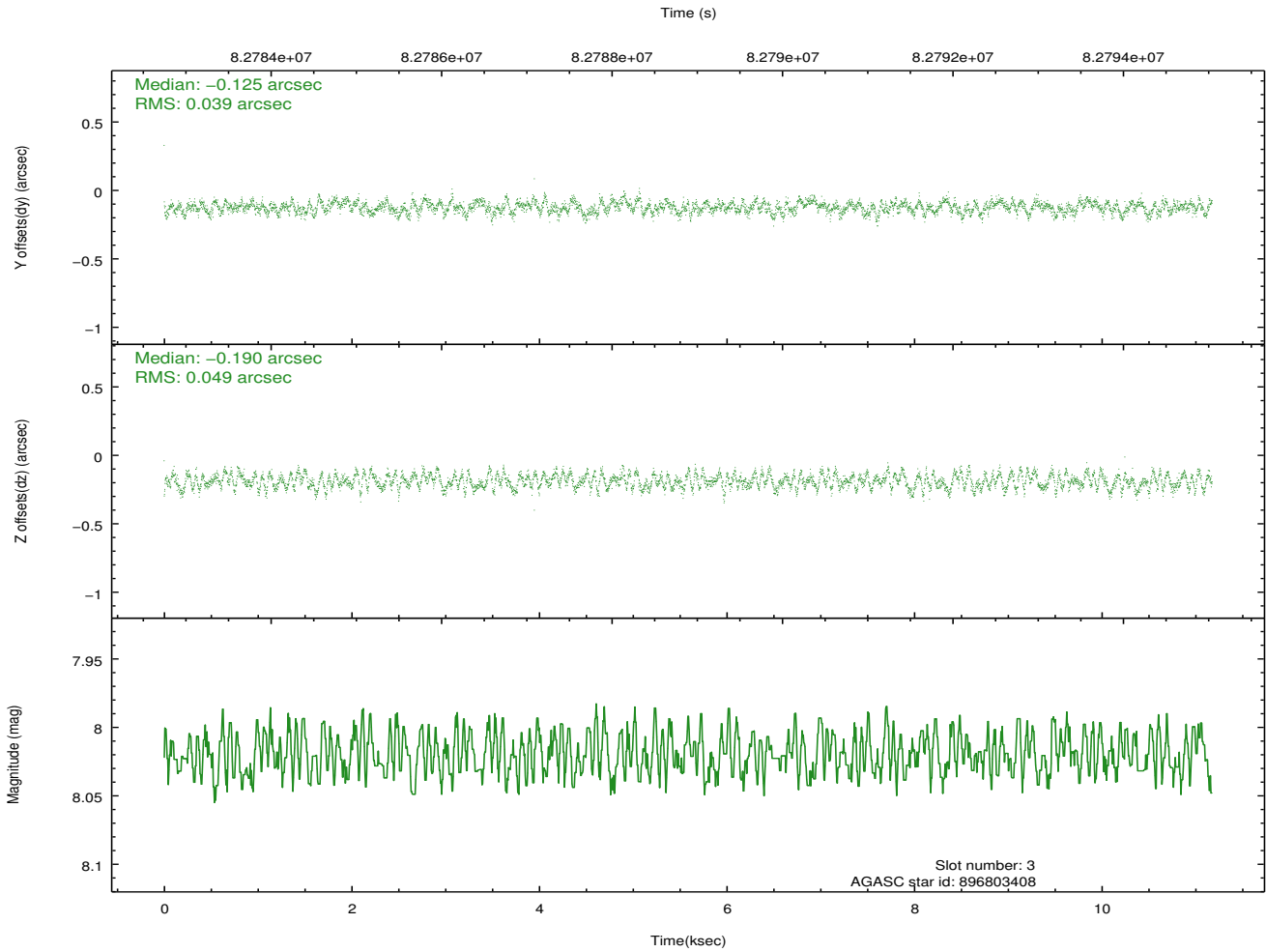
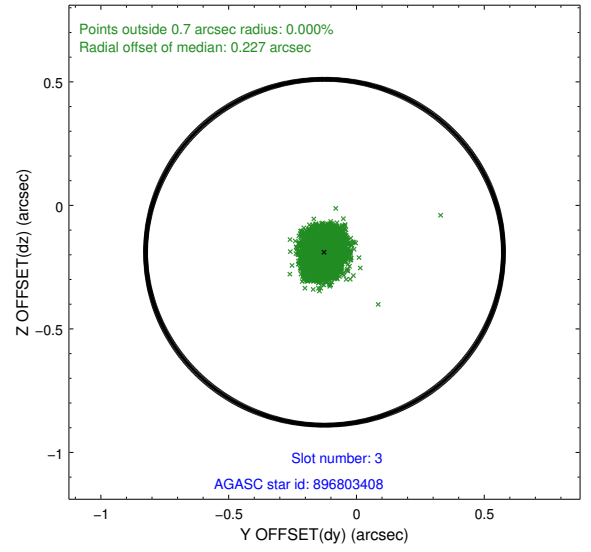
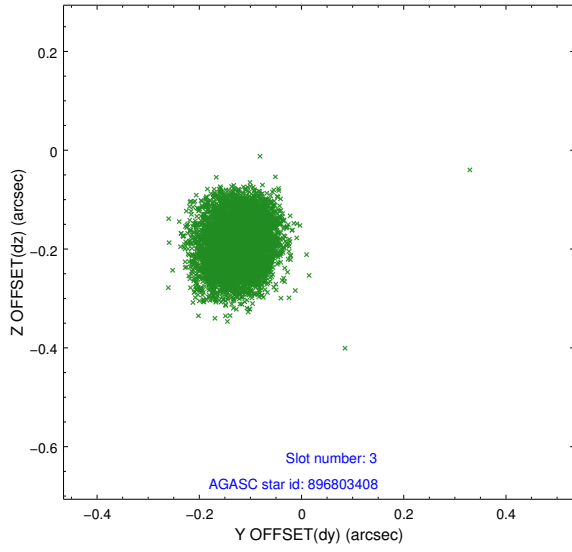


Slot Statistics

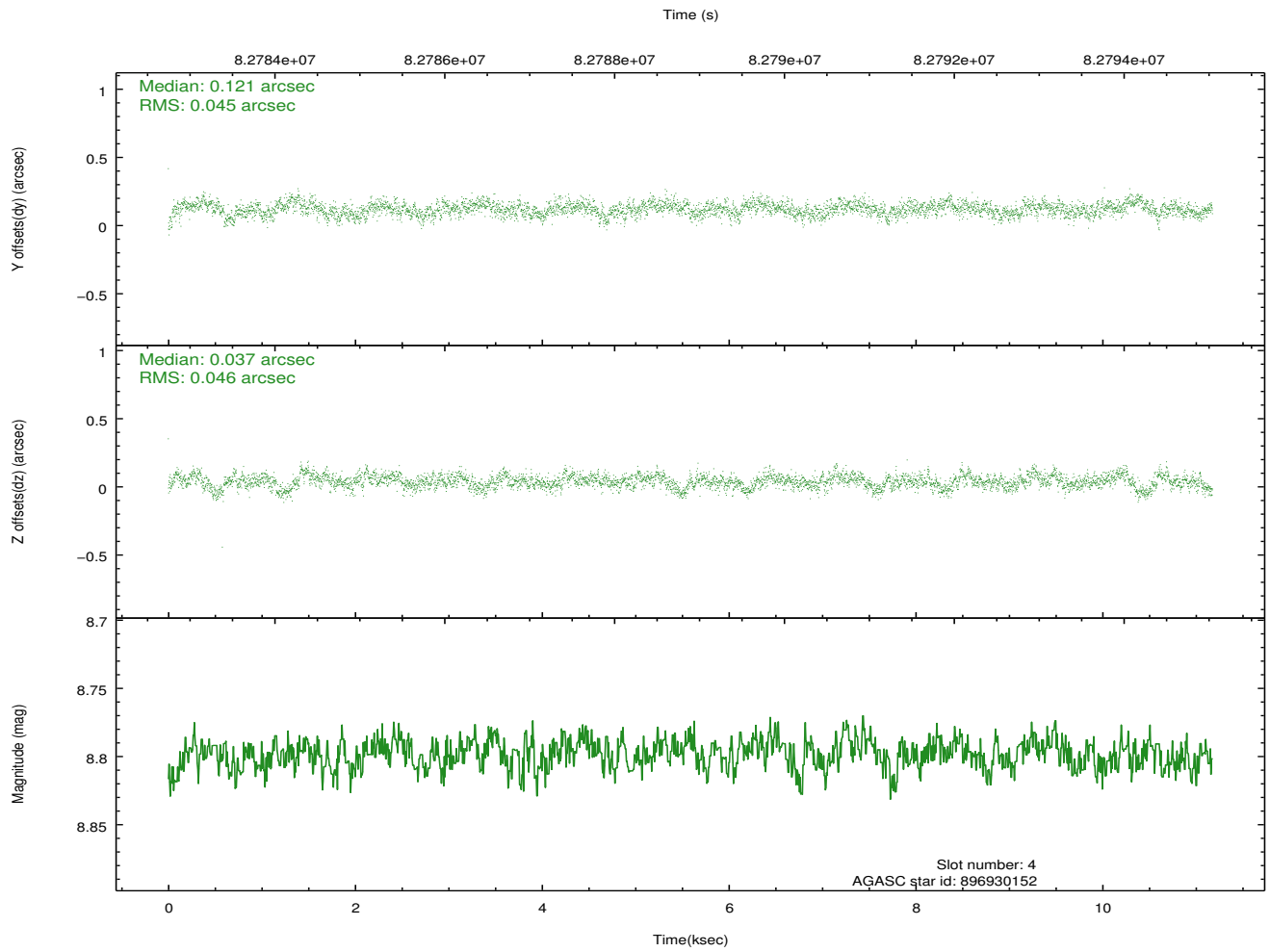
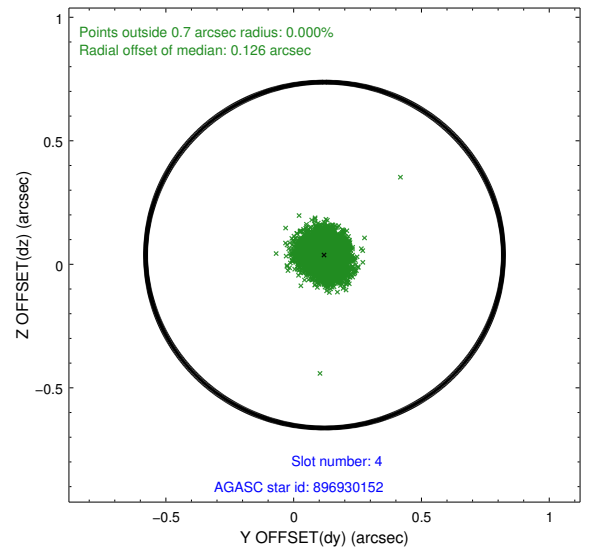
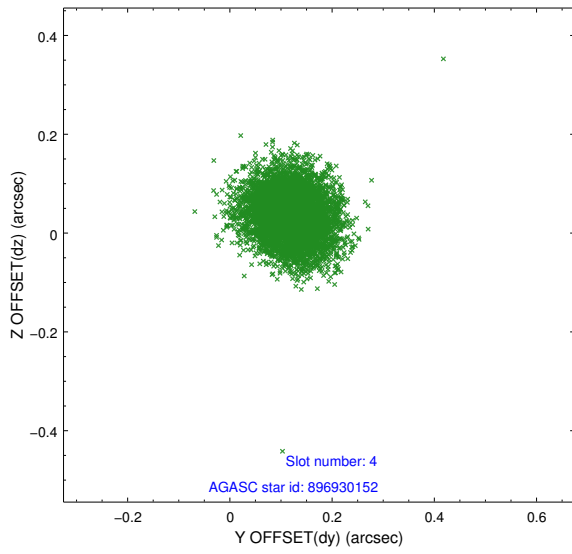
slot	status	id	mag	n_pts	med_dy	med_dz	dr1	dr2	ra	dec	mean_y	mean_z
0	FID	ACIS-I-2	7.15	2726	-0.034	-0.033	0.011	0.022	0.000000	0.000000	-755.75	-834.47
1	FID	ACIS-I-4	7.19	2725	-0.031	0.036	0.012	0.034	0.000000	0.000000	2158.09	1071.56
2	FID	ACIS-I-5	7.23	2726	-0.036	0.066	0.014	0.038	0.000000	0.000000	-1808.99	1069.94
3	GUIDE	896803408	8.02	5453	-0.125	-0.190	0.067	0.104	271.939176	-23.105136	-1338.37	-1844.83
4	GUIDE	896930152	8.80	5452	0.121	0.037	0.069	0.111	272.636345	-23.919019	1376.41	706.84
5	GUIDE	896935016	9.56	5449	0.037	0.104	0.097	0.157	272.726383	-23.692909	540.39	933.00
6	GUIDE	896806352	9.58	5427	-0.216	-0.172	0.083	0.134	271.925222	-22.897389	-2078.97	-1958.75
7	GUIDE	896936504	9.86	5450	0.181	0.220	0.111	0.175	273.018451	-24.101167	1923.25	2014.67

2.4 Star Slots

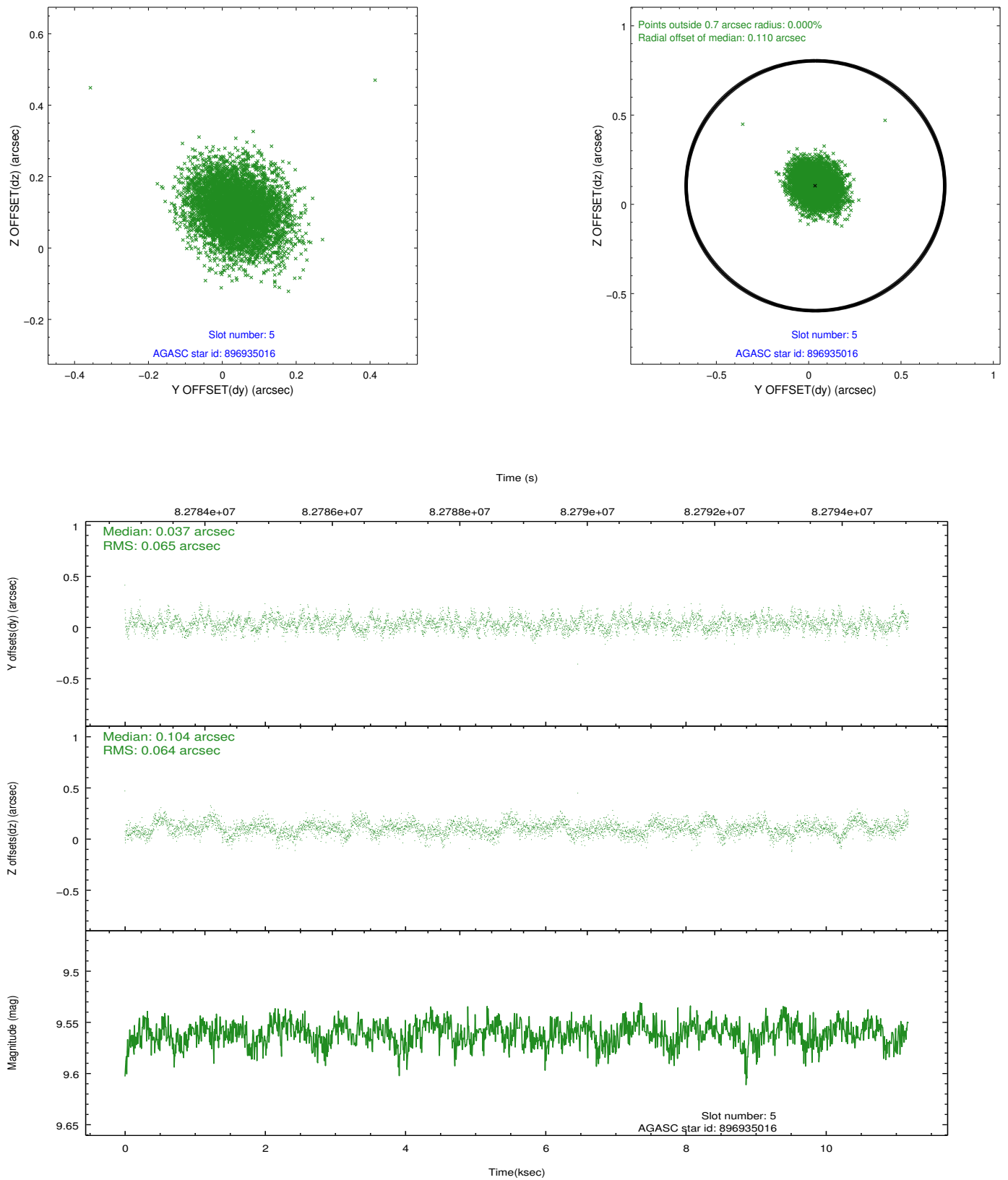
2.4.1 Slot 3



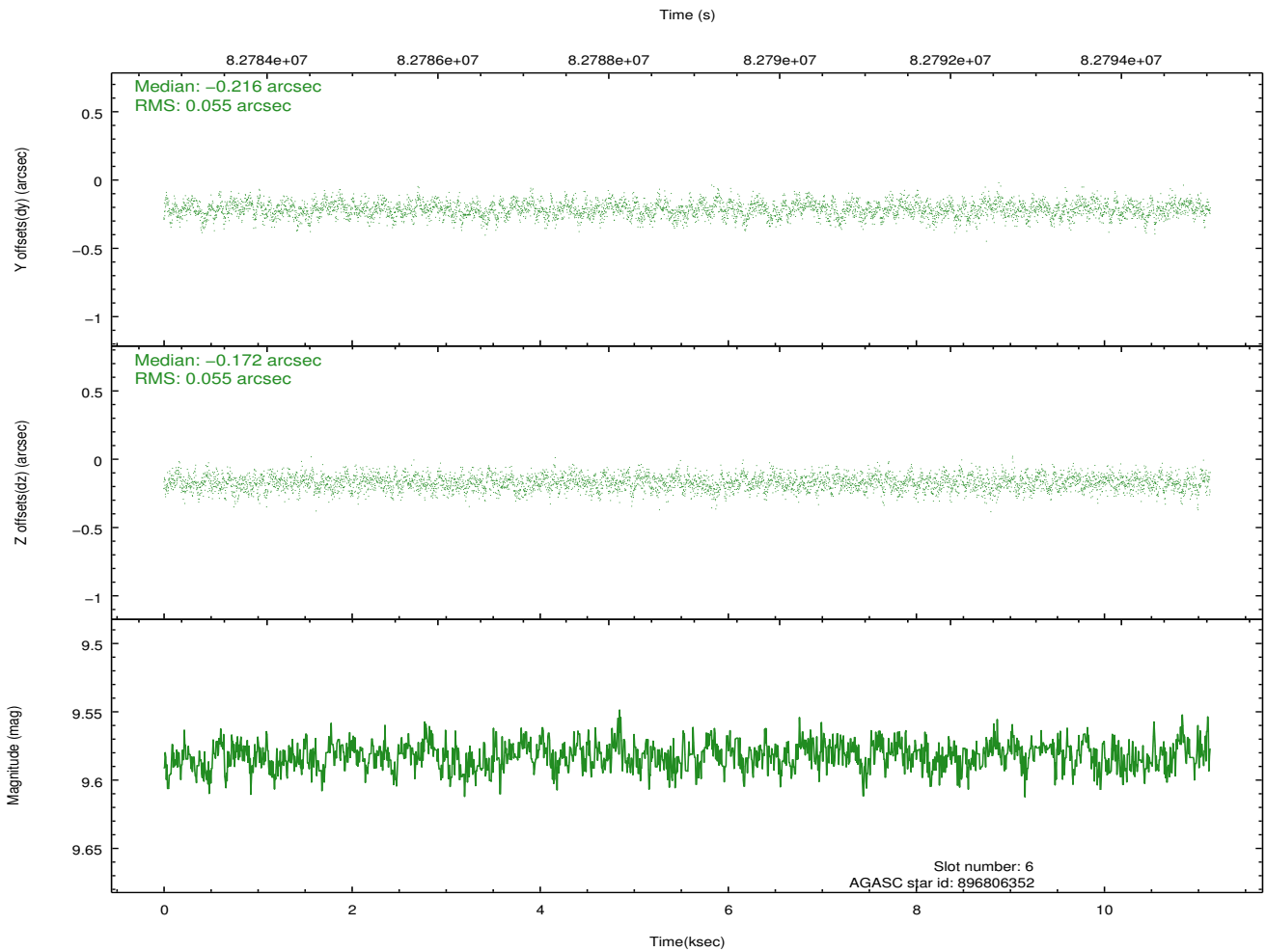
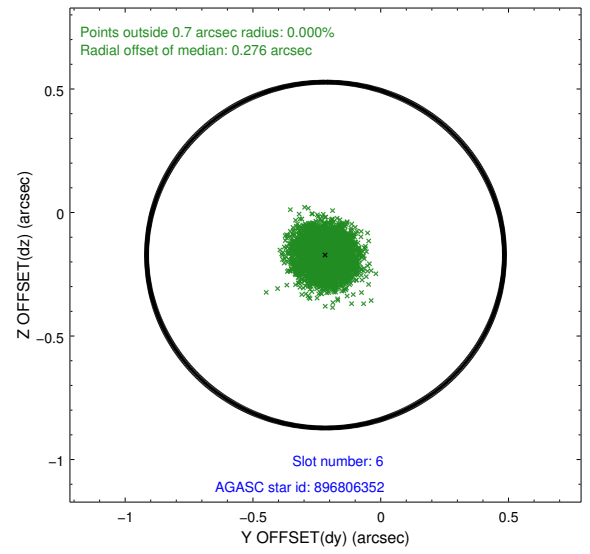
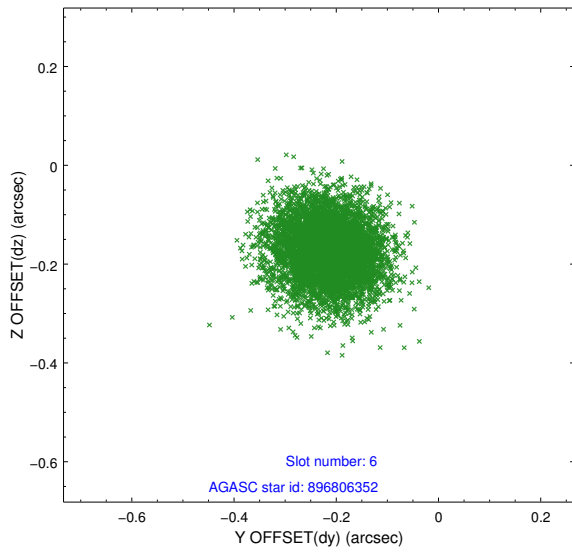
2.4.2 Slot 4



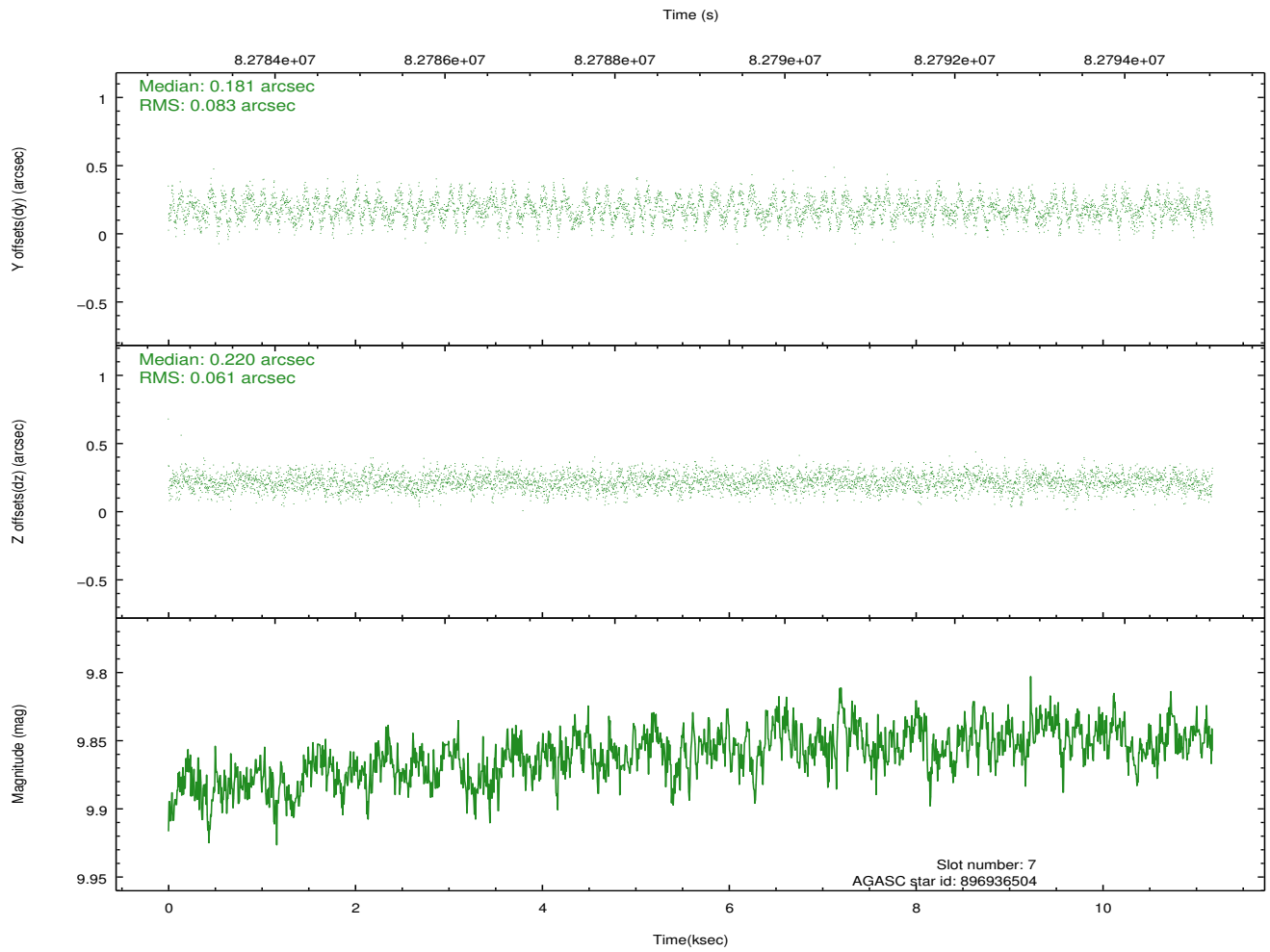
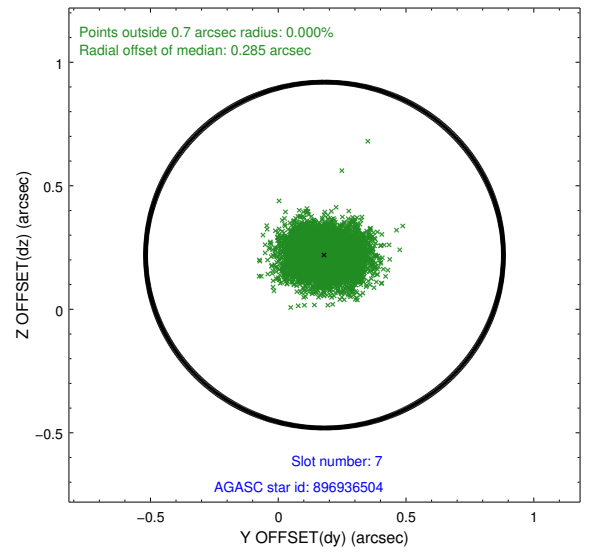
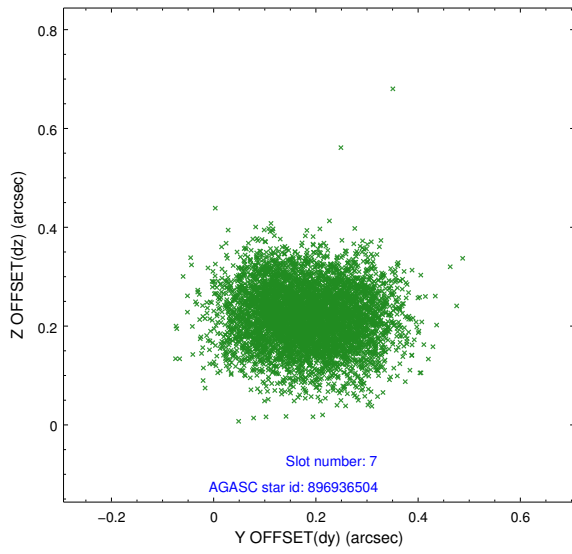
2.4.3 Slot 5



2.4.4 Slot 6

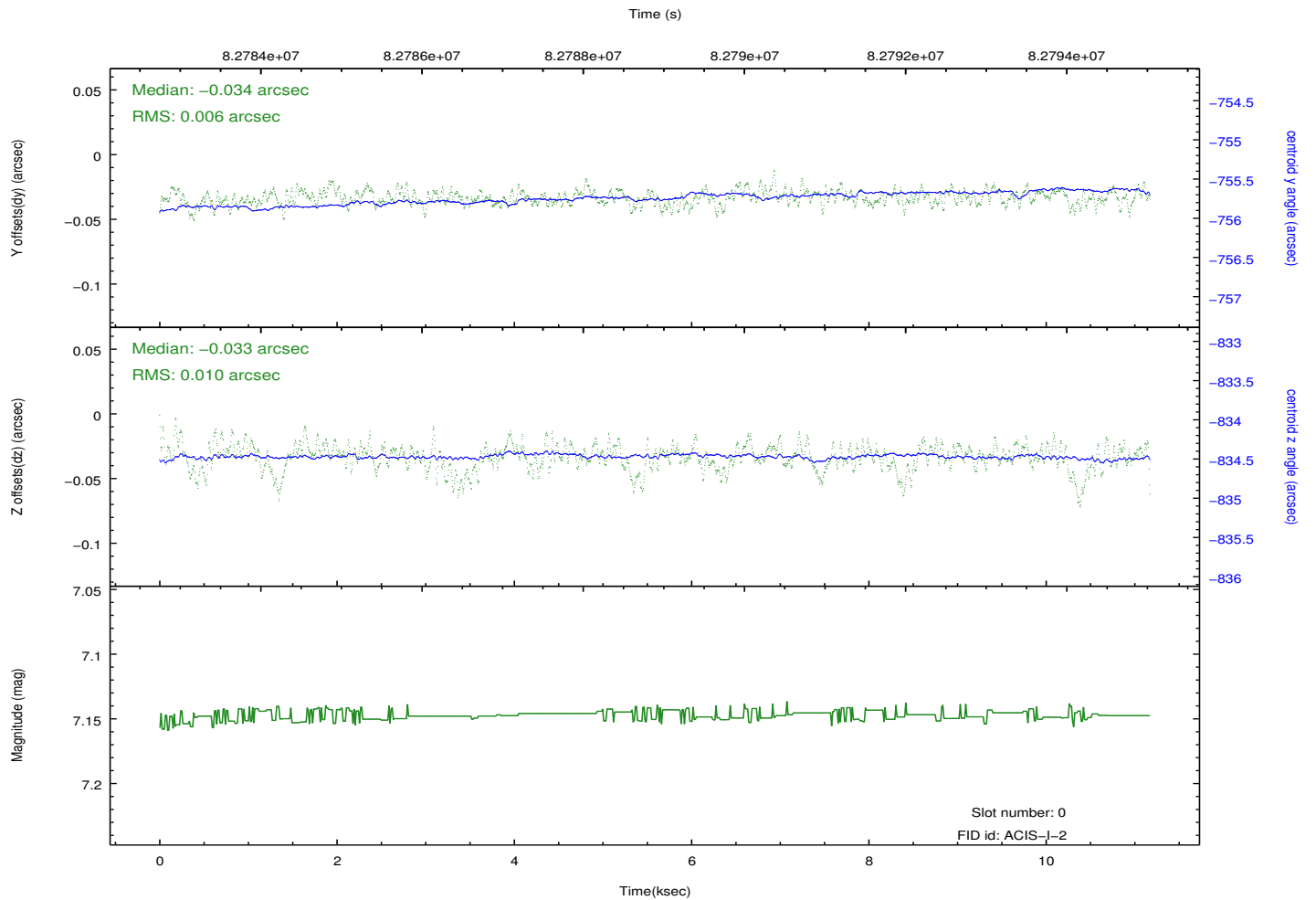
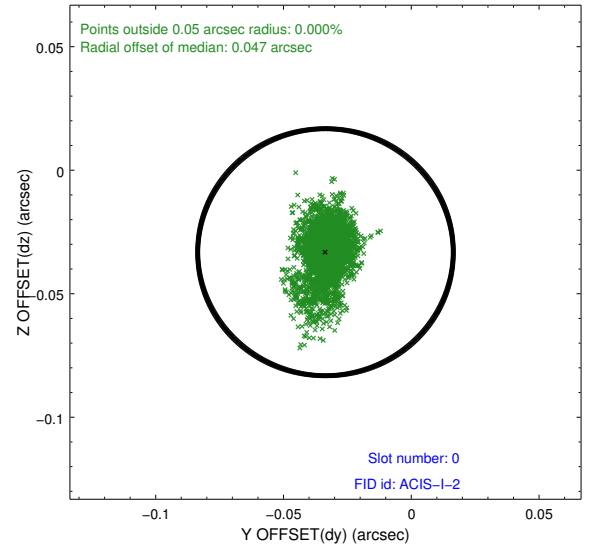
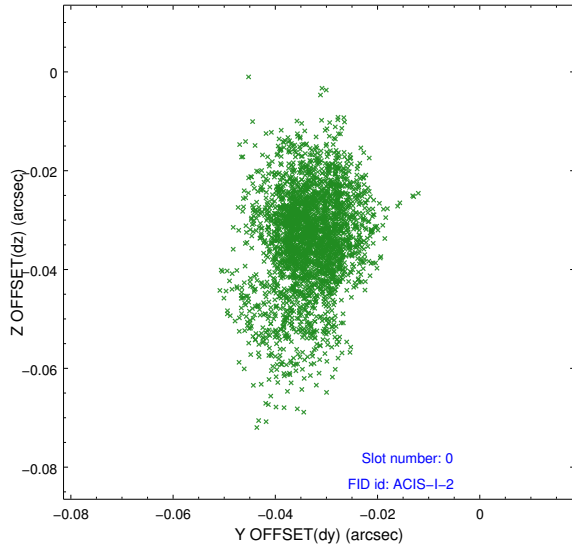


2.4.5 Slot 7

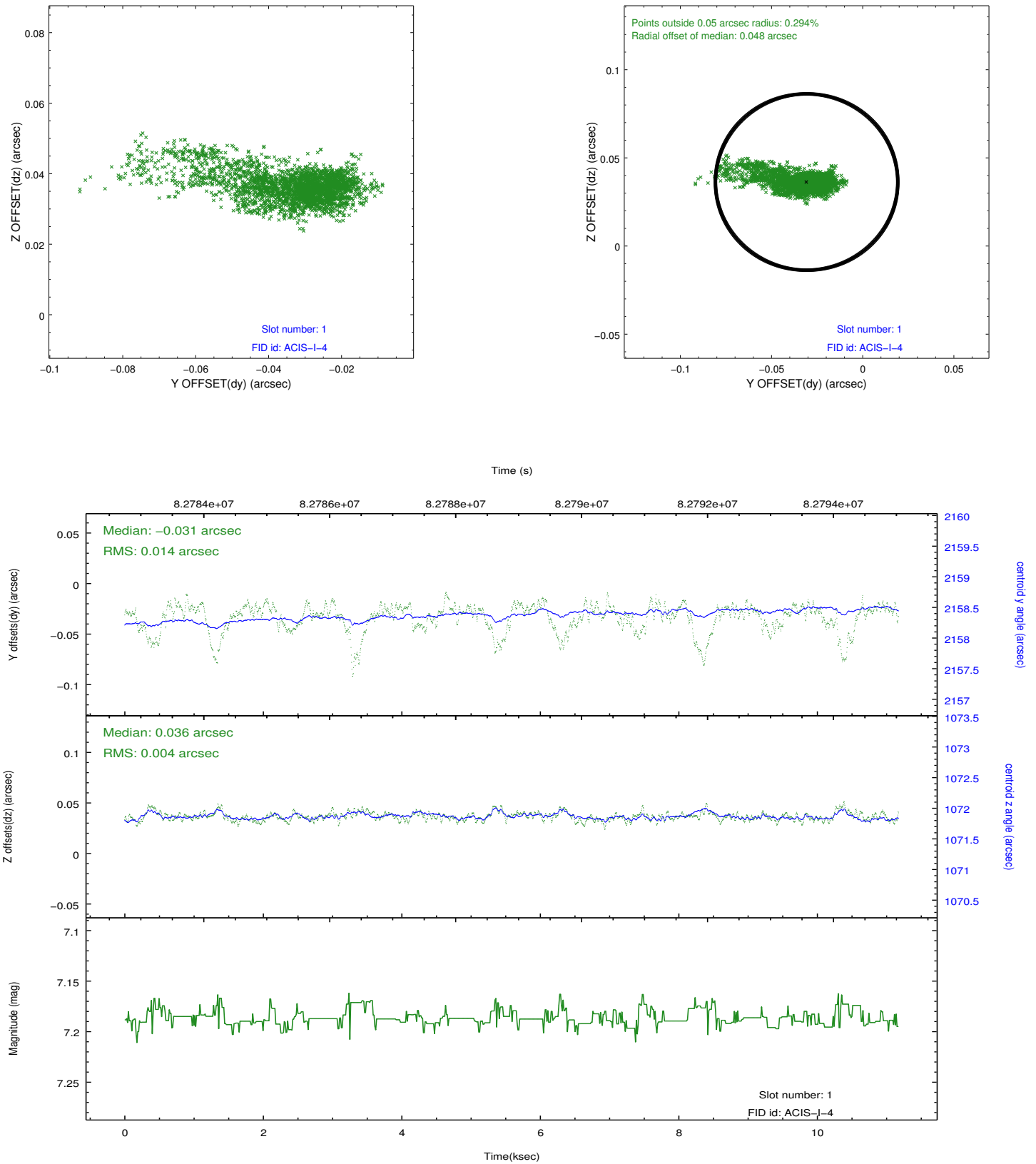


2.5 FID Slots

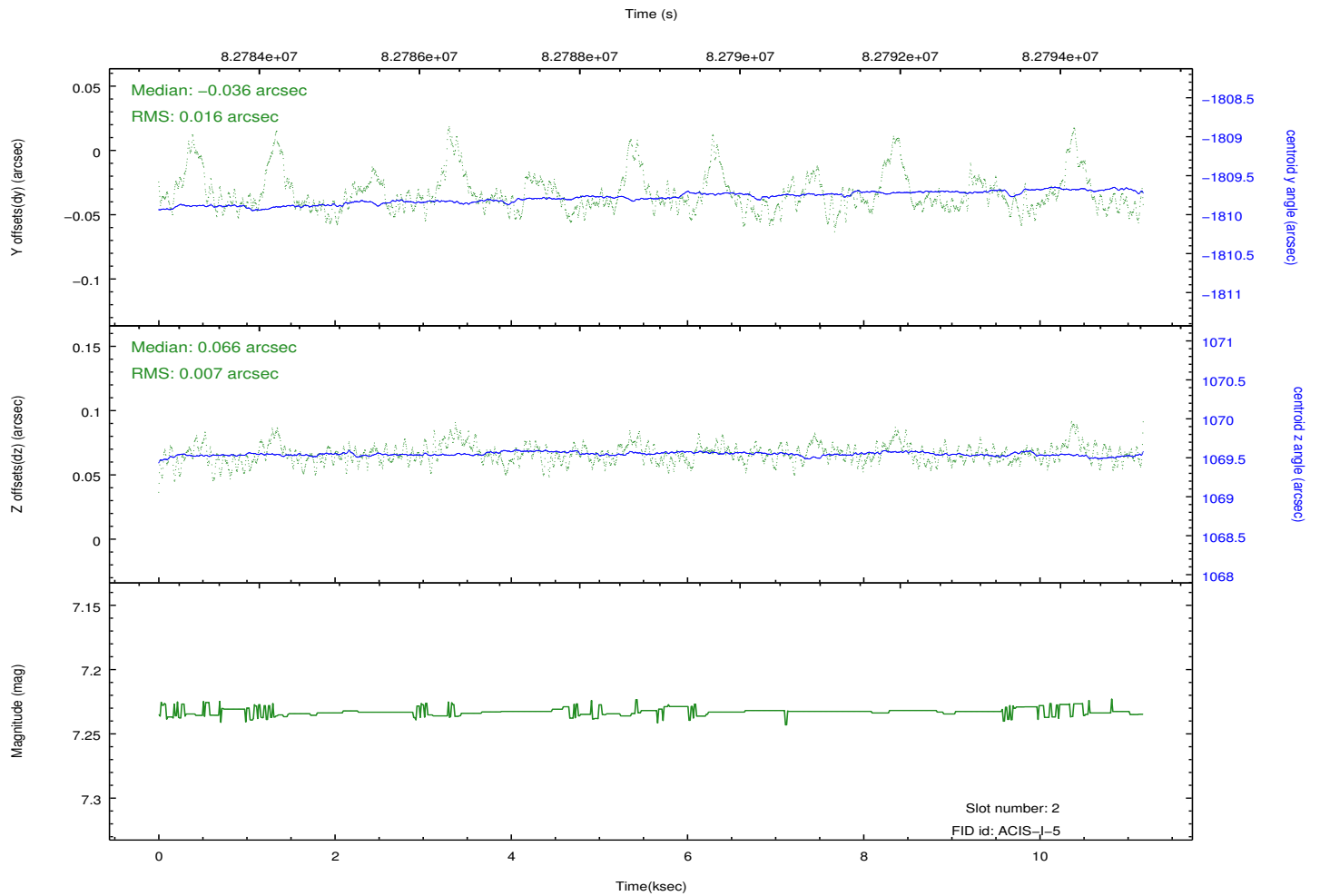
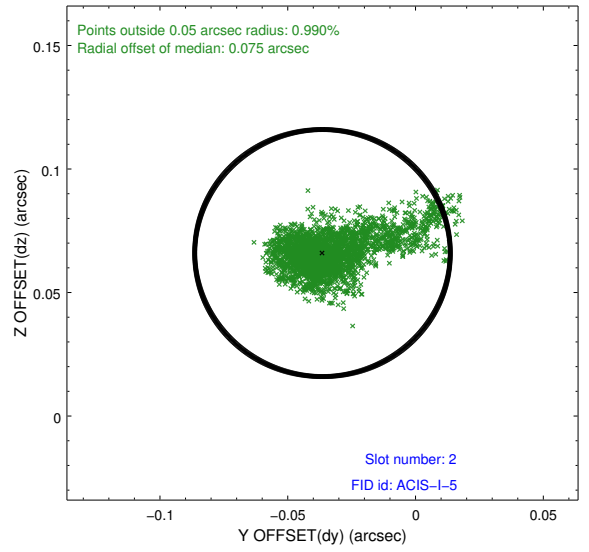
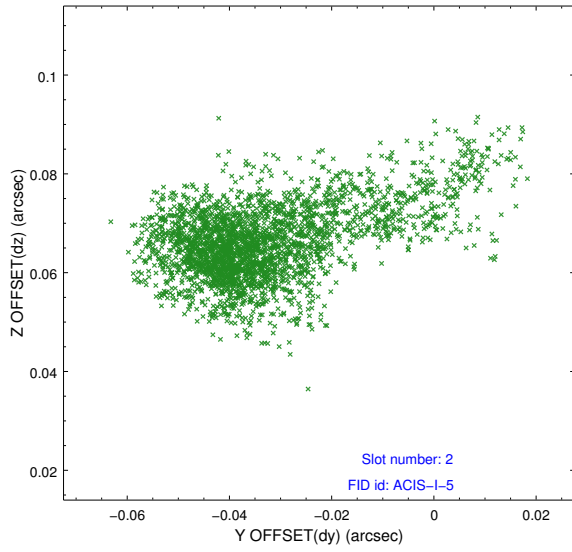
2.5.1 Slot 0



2.5.2 Slot 1



2.5.3 Slot 2



A Summary

A.1 Status

V&V Scientist	Jen Lauer
V&V Date (YYYY-MM-DD)	2012.09.06
V&V Edition	1
V&V Disposition and Status	OK
V&V Charge Time	9.82

A.2 Comments

Roll constraint: requested 261+/-4, actual roll delivered = 265.21; judged to be inconsequential to science. Image shows point source + faint diffuse 'tail.'