

V&V Reference Report

L2 ASCDS Version : 8.4.4

Observation 7869 - L2 Version 2
Chandra X-Ray Center

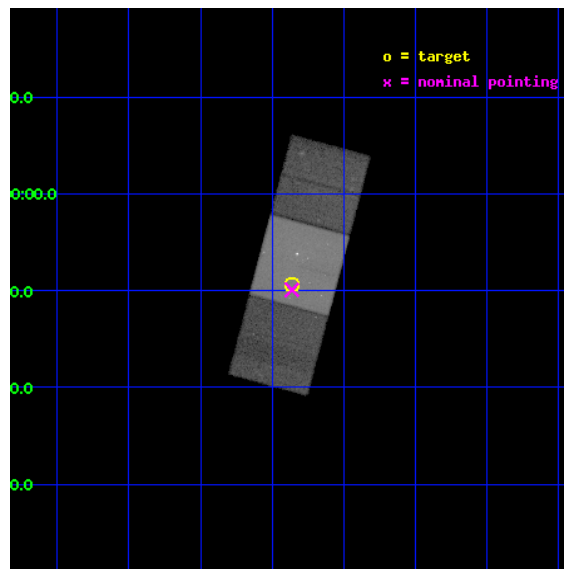
L2 Processing Date : May 2 2012

Contents

1	Front	2
2	OBI	3
2.1	OBI	3
2.1.1	Images	3
2.1.2	Bias	3
2.1.3	Parameters	4
2.1.4	Events	4
2.2	Compared Parameters	5
2.3	Aspect	6
2.4	Star Slots	9
2.4.1	Slot 3	9
2.4.2	Slot 4	10
2.4.3	Slot 5	11
2.4.4	Slot 6	12
2.4.5	Slot 7	13
2.5	FID Slots	14
2.5.1	Slot 0	14
2.5.2	Slot 1	15
2.5.3	Slot 2	16
A	Summary	17
A.1	Status	17
A.2	Comments	17

1 Front

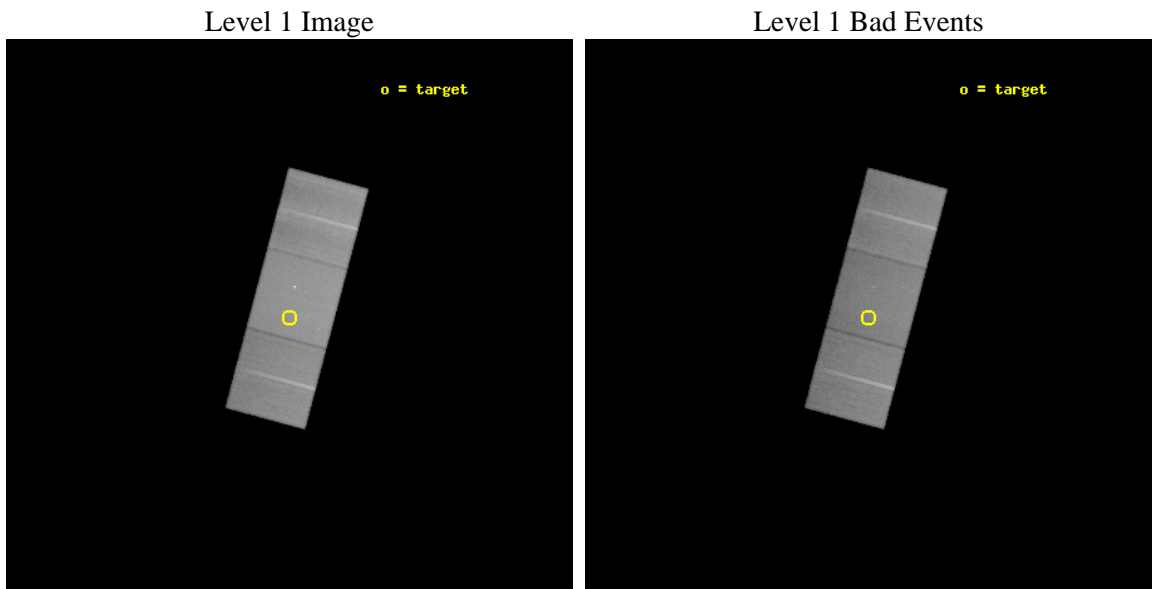
seq_num	701533	Sequence number
obs_id	7869	Observation id
title	The X-ray emission mechanism and jet kinematics at the hot spots of radio galaxy 3C 445	Proposal title
observer	Dr Markos Georganopoulos	Principal investigator
object	3C 445	Source name
dtcycle	0	
cycle	P	events from which exps? Prim/Second/Both
ra_targ	335.964583	Observer's specified target RA [deg]
dec_targ	-2.155556	Observer's specified target Dec [deg]
ra_nom	335.9654939876	Nominal RA [deg]
dec_nom	-2.1652678012465	Nominal Dec [deg]
roll_nom	284.95590067641	Nominal Roll [deg]
revision	2	Processing version of data
ontime	46199.300355315	Sum of GTIs [s]
livetime	45595.672484743	Livetime [s]
ontime6	46199.300355315	Sum of GTIs [s]
ontime7	46199.300355315	Sum of GTIs [s]
ontime8	46196.159404874	Sum of GTIs [s]
l2events	364004	Number of level 2 events



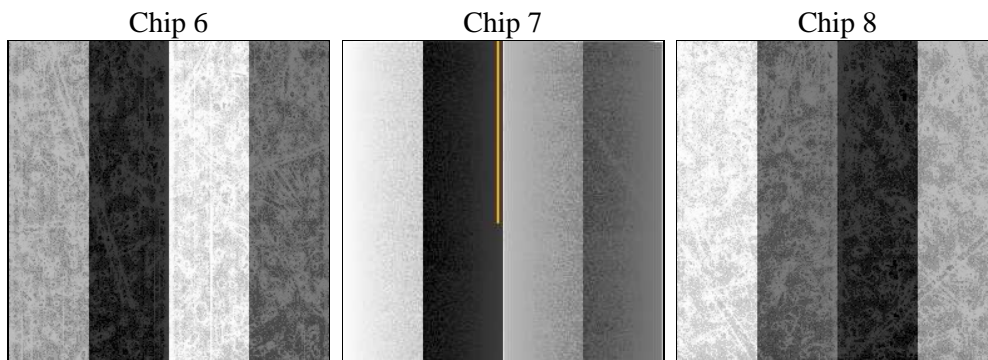
2 OBI

2.1 OBI

2.1.1 Images



2.1.2 Bias



2.1.3 Parameters

obi_num	0	Obi number	sched_exp_time	46018.708000	[s] Scheduled observation exposure time
ascdsver	8.4.4	Processing system revision	ontime	46199.300355315	Sum of GTIs [s]
caldsver	4.4.9	 	ontime6	46199.300355315	Sum of GTIs [s]
date	2012-05-02T22:17:30	Date and time of file creation	ontime7	46199.300355315	Sum of GTIs [s]
revision	2	Processing version of data	ontime8	46196.159404874	Sum of GTIs [s]
			l1events	1704108	Number of level 1 events

2.1.4 Events

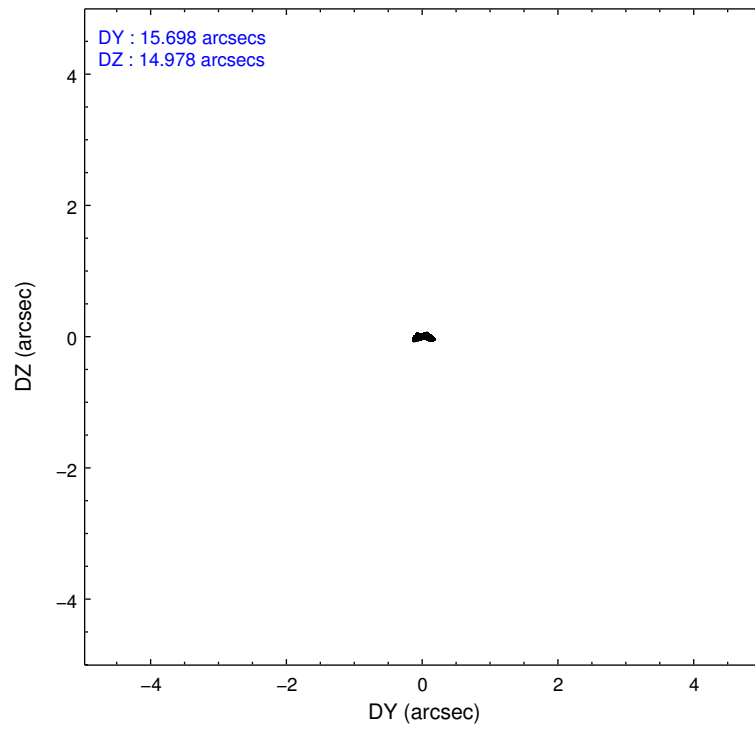
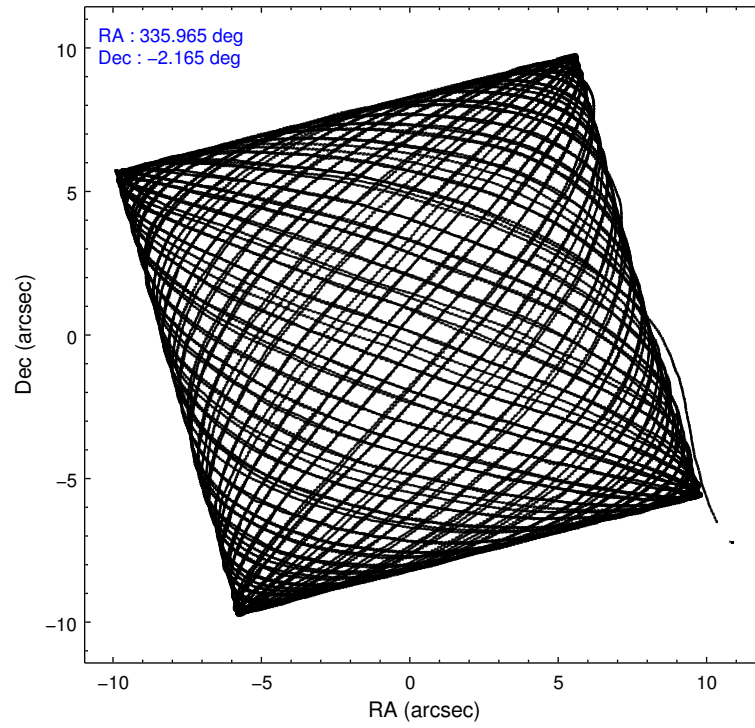
	ccd 6	ccd 7	ccd 8
level 1 events	468364	641201	594543
rejected events	414012	373963	460361
rejected %	88%	58%	77%

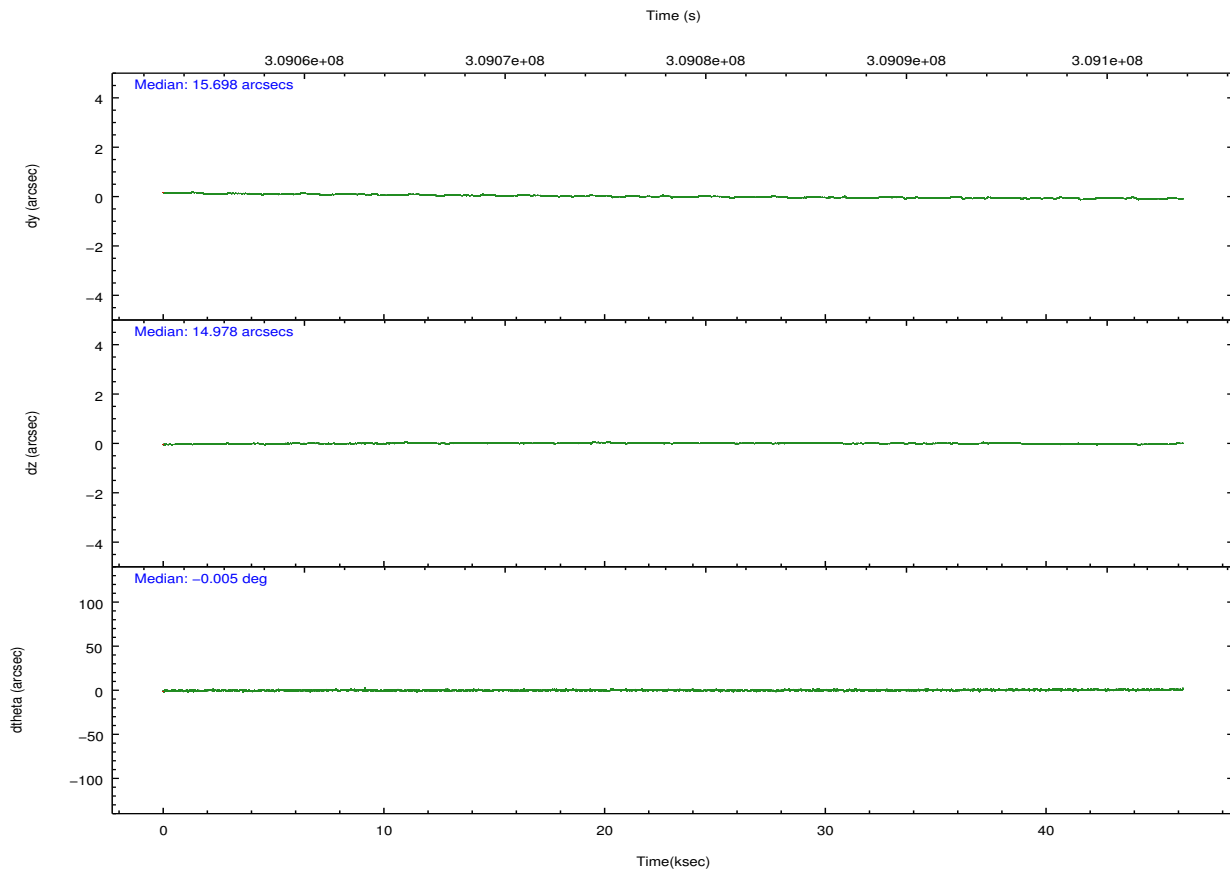
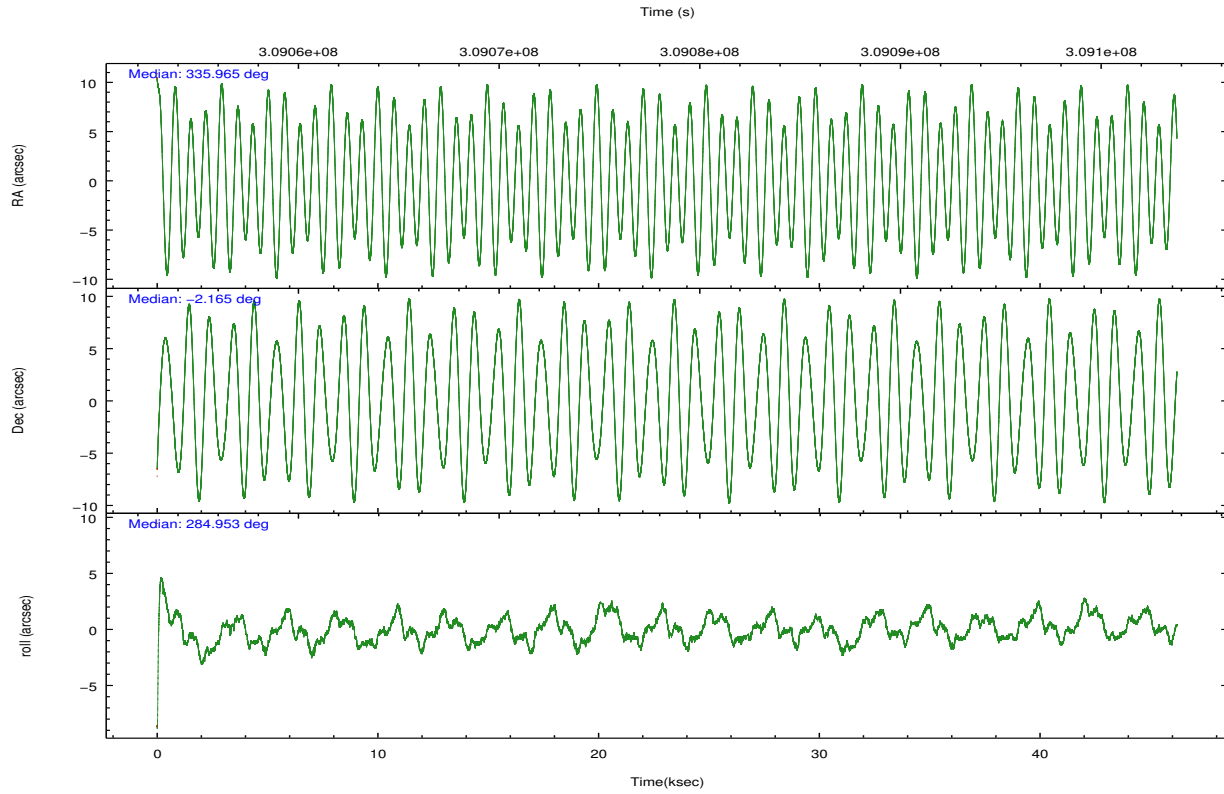
	ccd 6	ccd 7	ccd 8
grade 0 events	21373	24542	42449
	4%	3%	7%
grade 1 events	249	711	449
	0%	0%	0%
grade 2 events	12141	55575	30843
	2%	8%	5%
grade 3 events	5368	23209	14588
	1%	3%	2%
grade 4 events	5249	22682	13602
	1%	3%	2%
grade 5 events	21889	58582	29050
	4%	9%	4%
grade 6 events	11411	146767	35482
	2%	22%	5%
grade 7 events	390684	309133	428080
	83%	48%	72%

2.2 Compared Parameters

Parameter	Planned	Actual	Parameter	Planned	Actual
Instrument	ACIS	ACIS	Obspar format version number	7	7
Detector	ACIS-678	ACIS-678	Obspar file type	PREDICTED	ACTUAL
Grating	NONE	NONE	Obspar update status	NONE	UPDATED
Data mode	FAINT	FAINT	Number of optional ACIS chips dropped	0	0
Observation mode	POINTING	POINTING	On-chip summing requested	N	N
[deg] Pointing RA	335.945893	335.9654939876032	Subarray requested	NONE	NONE
[deg] Pointing Dec	-2.146187	-2.165267801246462	Alternating exposures requested	N	N
[deg] Pointing Roll	284.798536	284.955900676405	[s] Primary exposure time	0.000000	3.1
[mm] SIM focus pos	-0.684267	-0.6828225247311905			
[mm] SIM defocus	0	0.001444936568705701			
[mm] SIM translation stage pos	-190.132523	-190.1425803651734			
[mm] SIM translation stage offset	0	0.01005778216563158			
[s] Observation start time (MET)	309055448.184000	309054083.8399			
Observation start date	2007-10-18T00:43:03	2007-10-18T00:21:23			
[s] Observation end time (MET)	309101466.184000	309101692.5297			
Observation end date	2007-10-18T13:30:01	2007-10-18T13:34:52			
Read mode	TIMED	TIMED			

2.3 Aspect





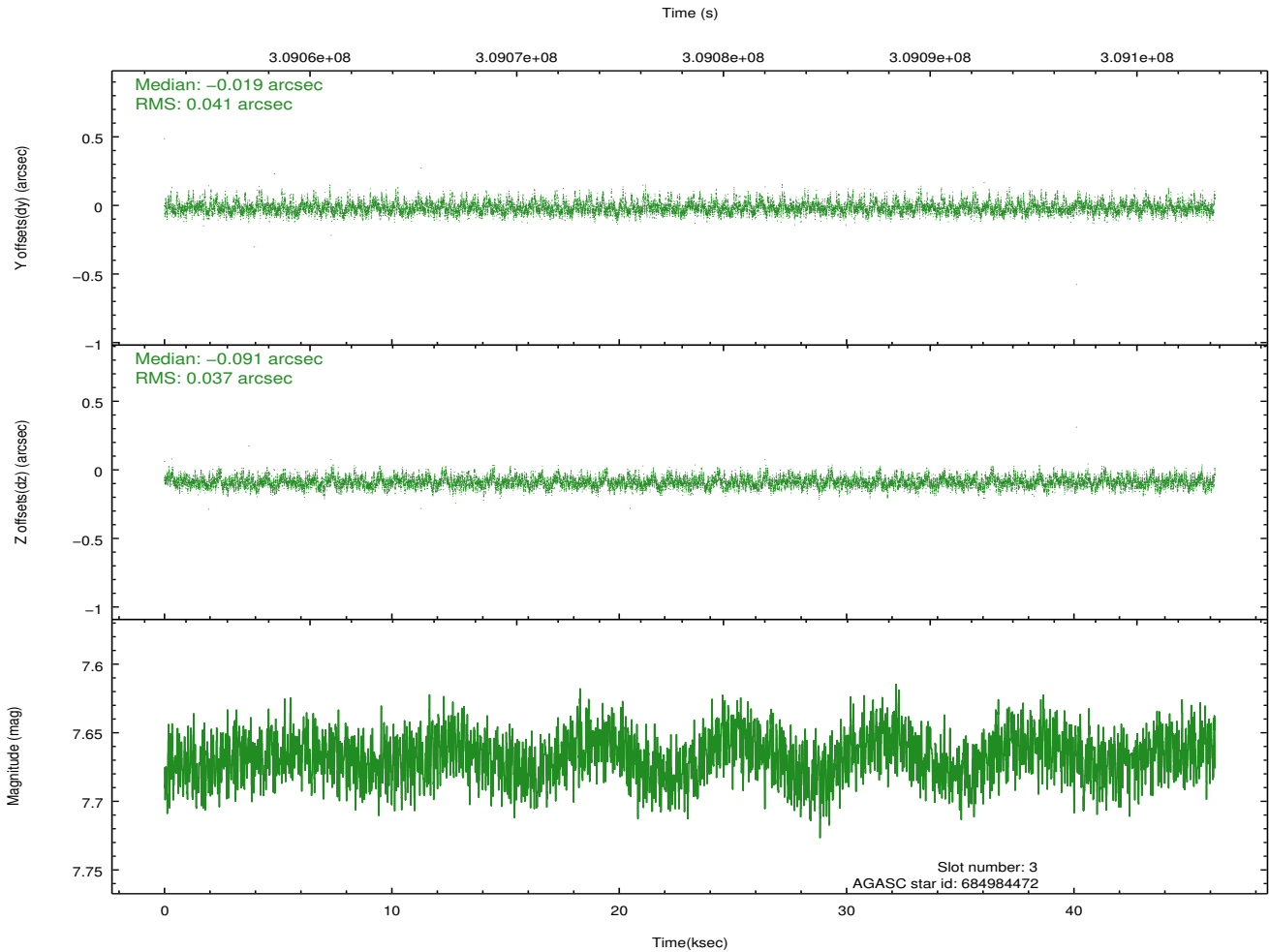
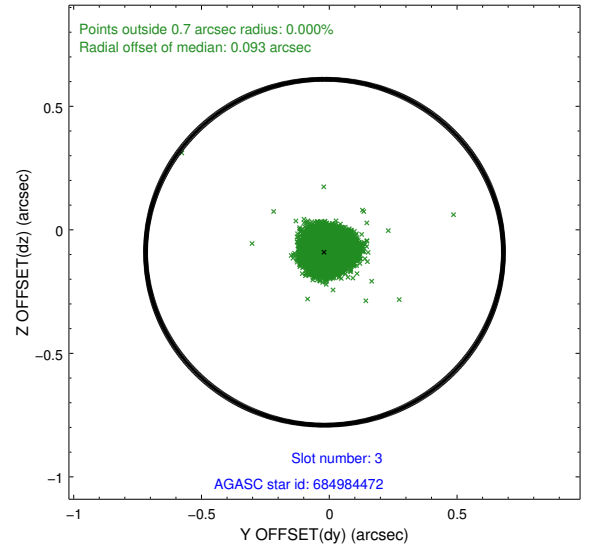
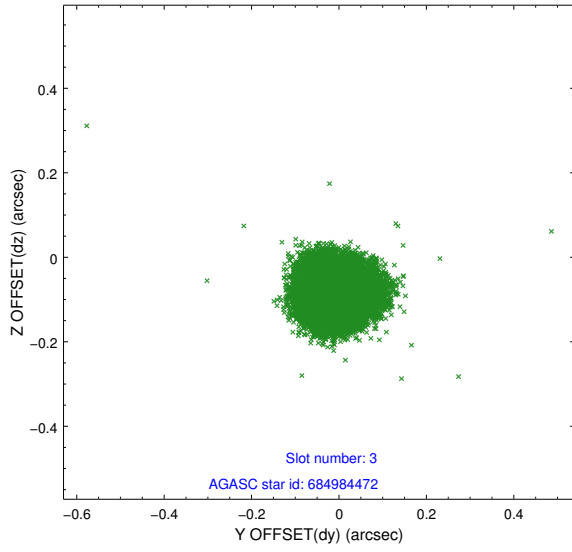
Slot Statistics

slot	status	id	mag	n_pts	med_dy	med_dz	dr1	dr2	ra	dec	mean_y	mean_z
0	FID	ACIS-S-1	7.18	11268	-0.028	-0.046	0.006	0.011	0.000000	0.000000	927.30	-1731.98
1	FID	ACIS-S-4	7.19	11268	0.079	0.020	0.006	0.011	0.000000	0.000000	2144.81	172.25
2	FID	ACIS-S-6	7.33	11268	-0.075	0.037	0.007	0.011	0.000000	0.000000	393.18	809.62
3	GUIDE	684984472	7.67	22534	-0.019	-0.091	0.058	0.097	336.043398	-2.061939	-203.19	416.76
4	GUIDE	684993328	9.43	22446	0.018	0.115	0.092	0.150	335.439993	-1.852822	-1485.31	-1489.97
5	GUIDE	685376744	8.83	22460	0.038	-0.094	0.075	0.119	335.746038	-2.583797	1340.16	-1097.17
6	GUIDE	684990016	8.79	22526	-0.131	0.028	0.068	0.111	336.074884	-1.446788	-2316.01	1092.27
7	GUIDE	685377368	8.06	22530	0.091	0.039	0.060	0.095	335.969878	-2.757725	2151.10	-478.10

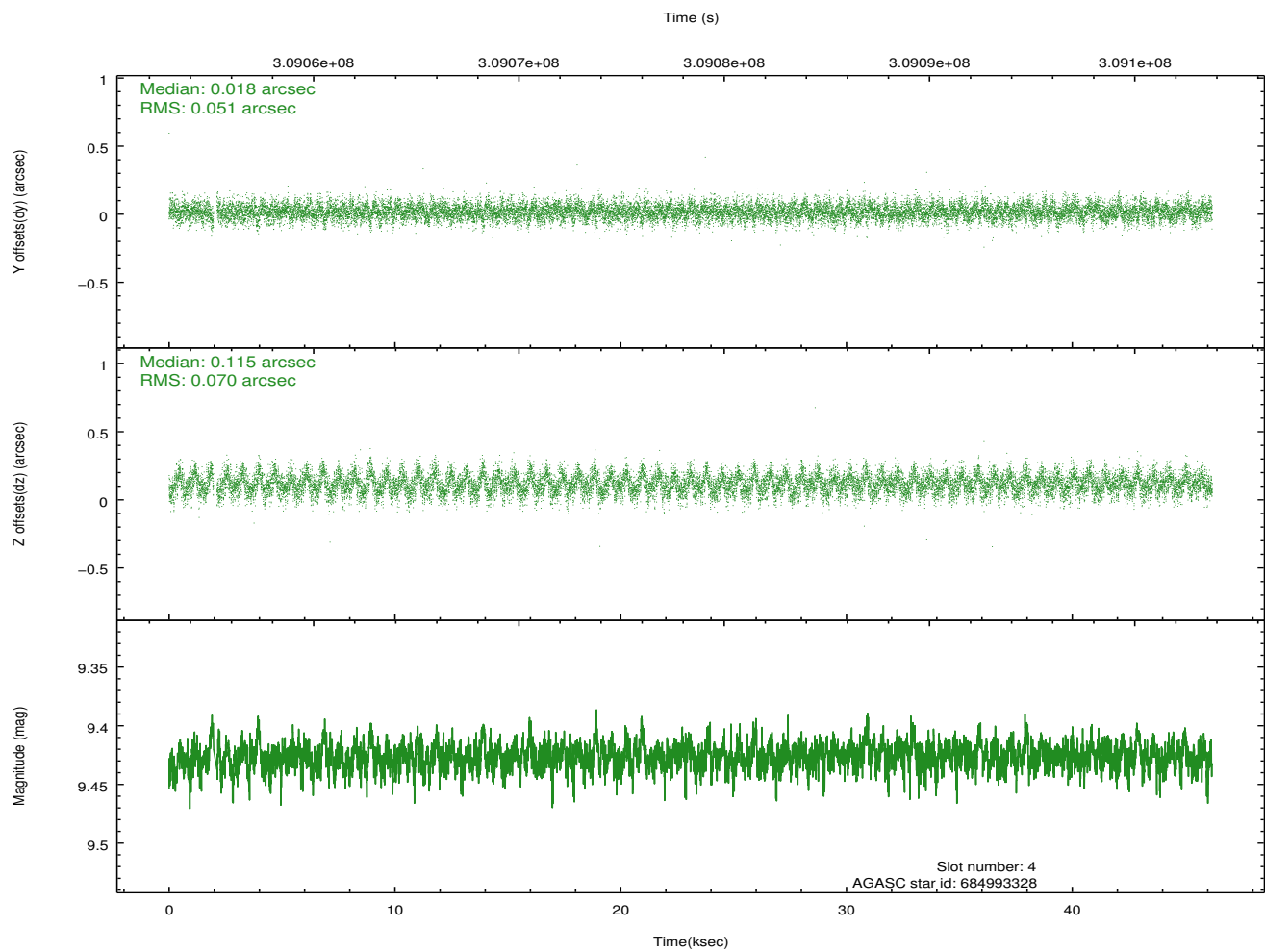
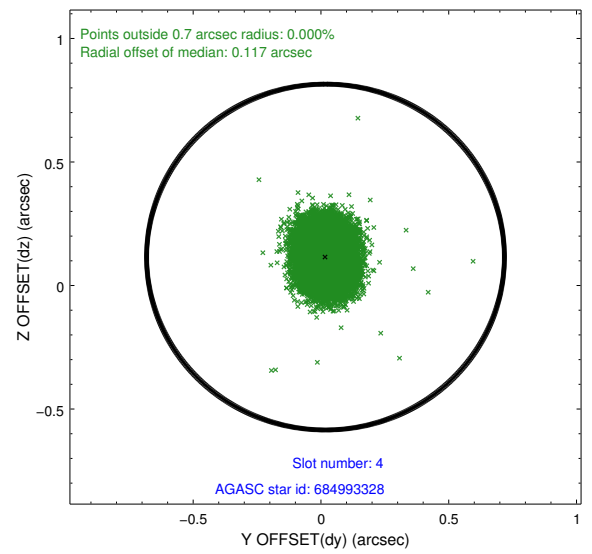
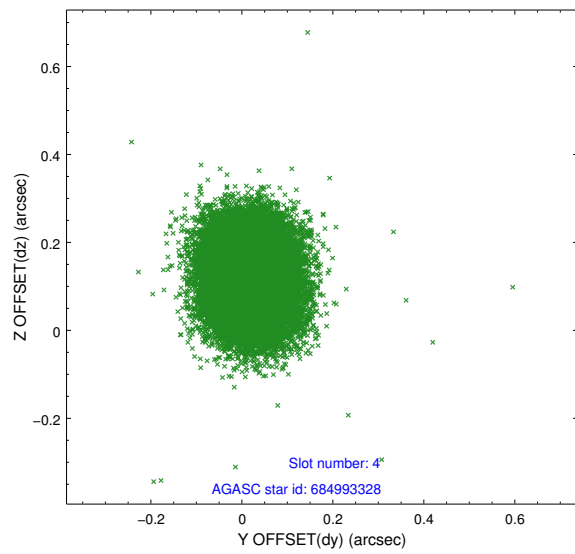
∞

2.4 Star Slots

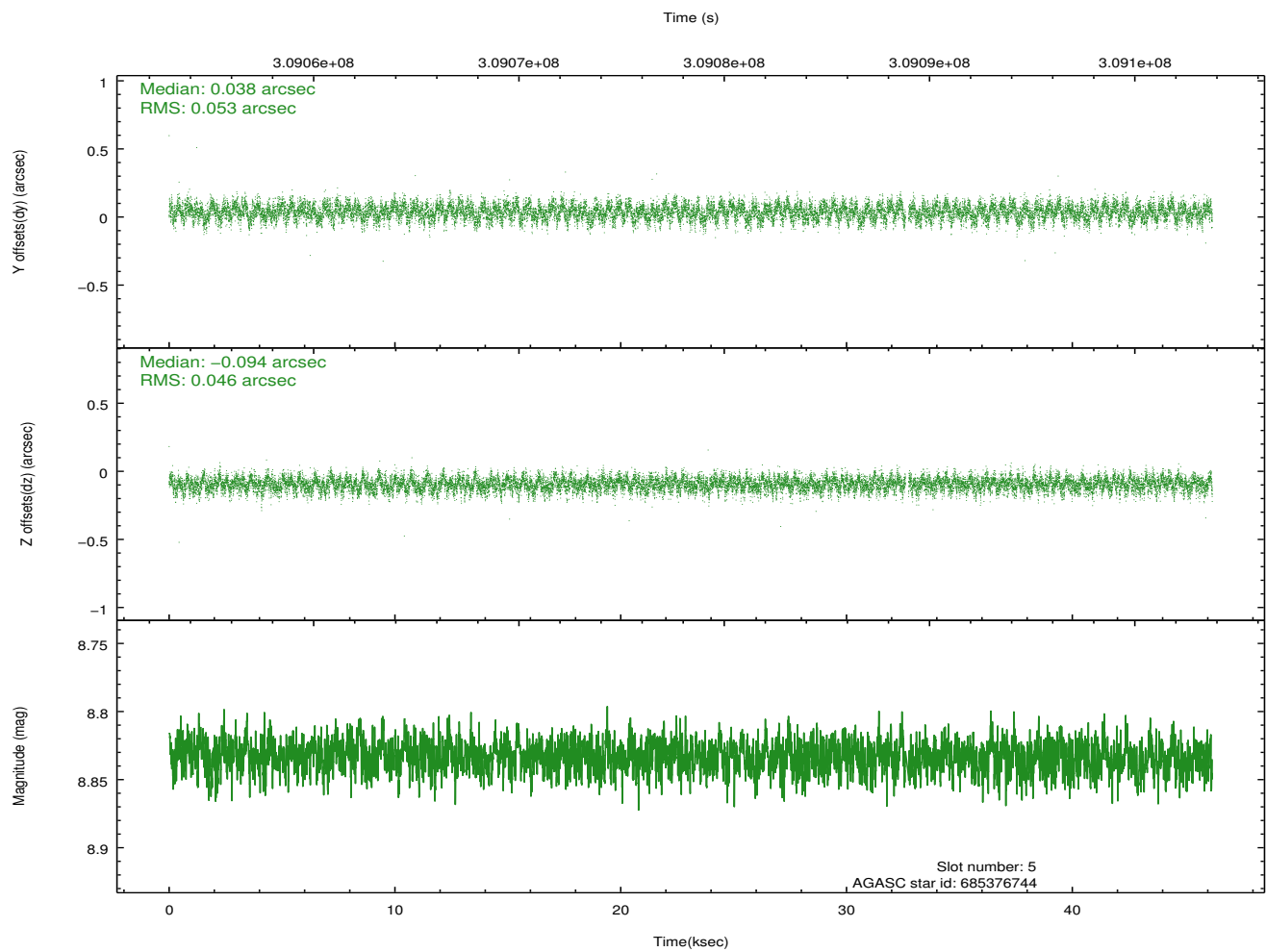
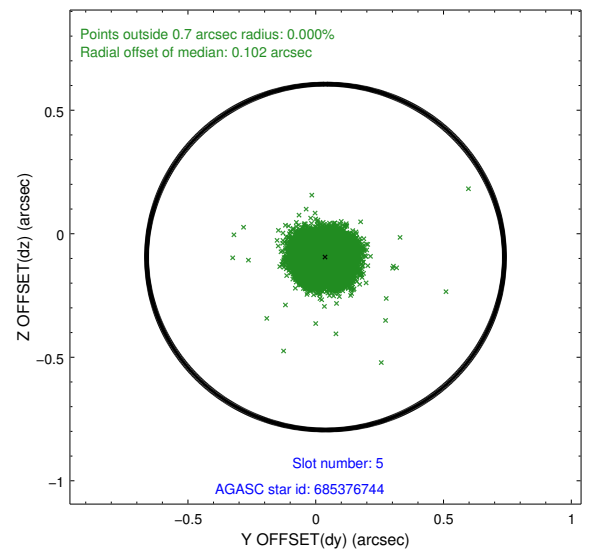
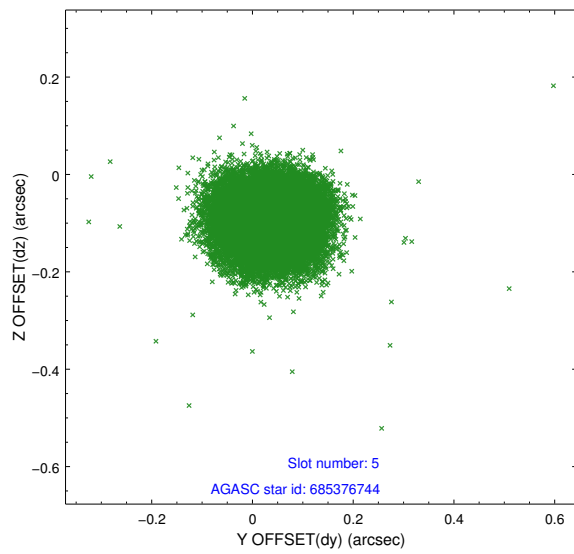
2.4.1 Slot 3



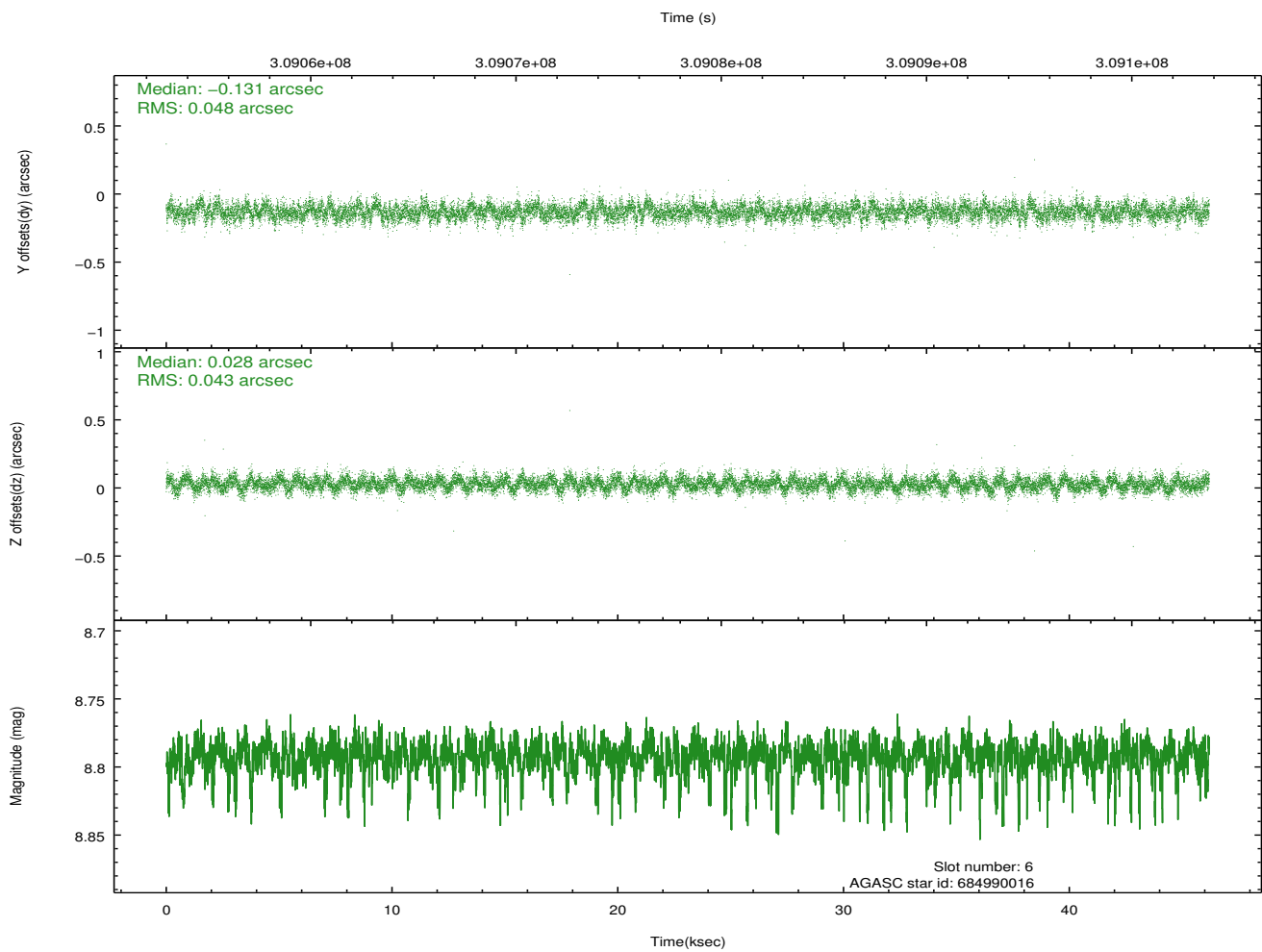
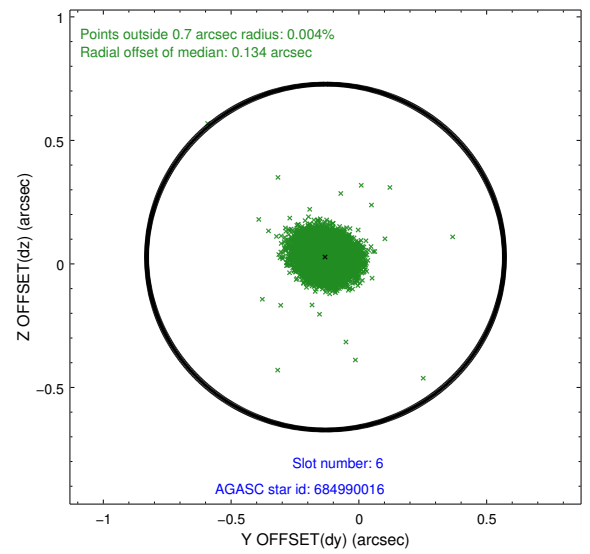
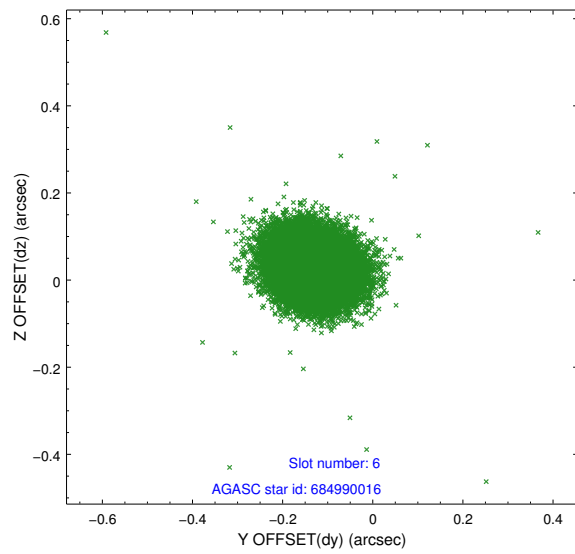
2.4.2 Slot 4



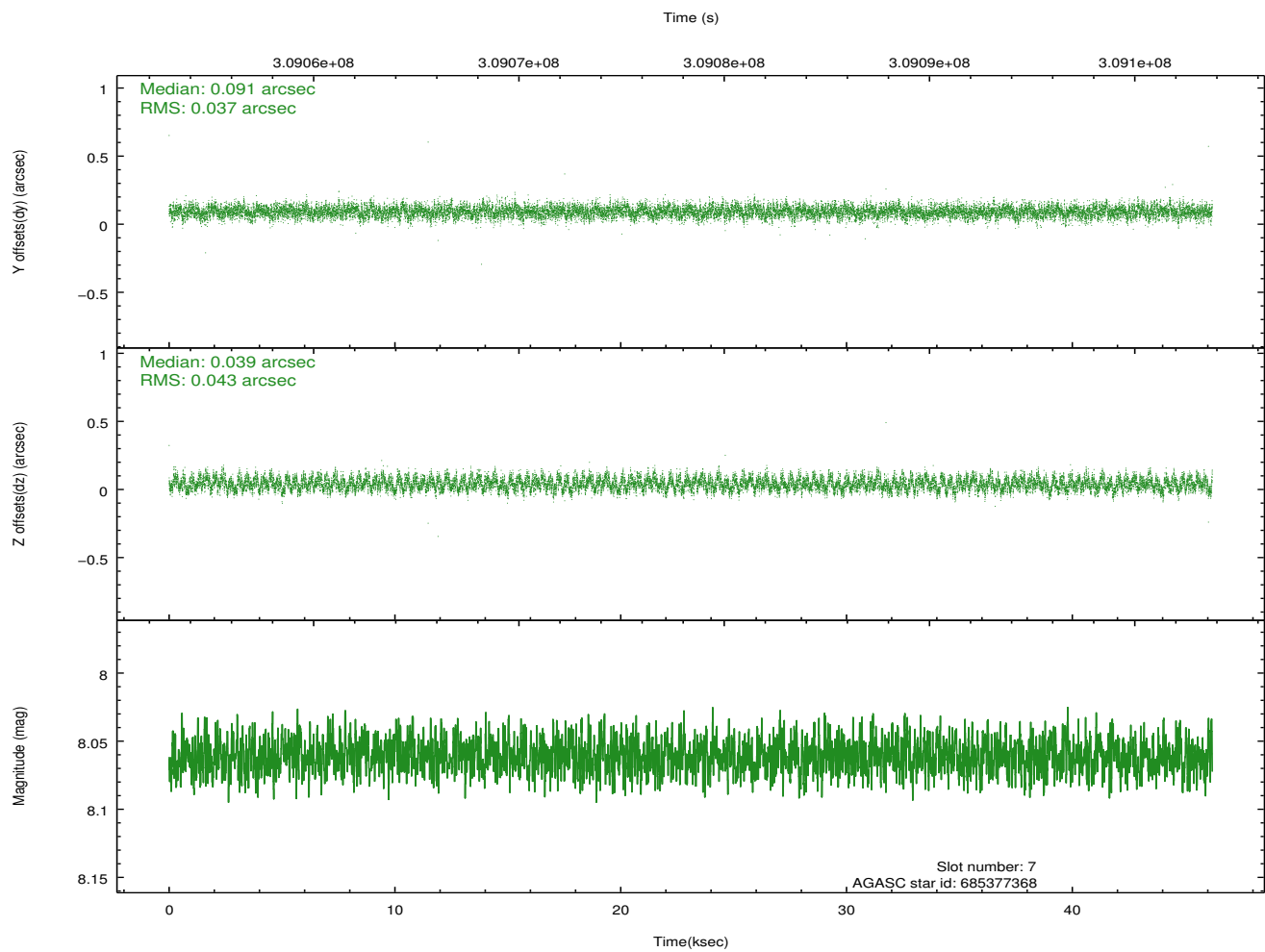
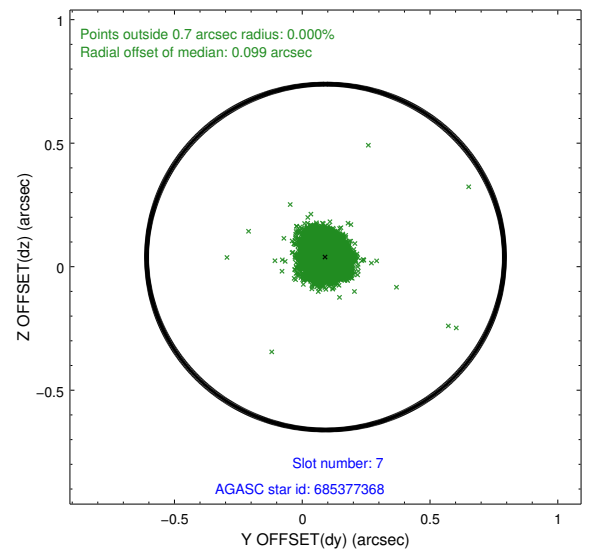
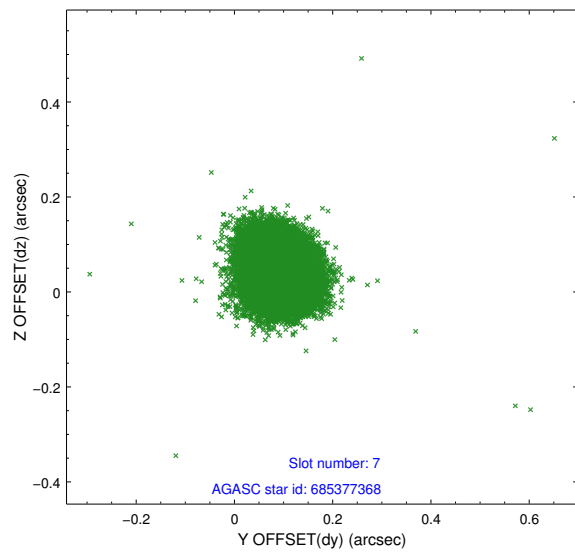
2.4.3 Slot 5



2.4.4 Slot 6

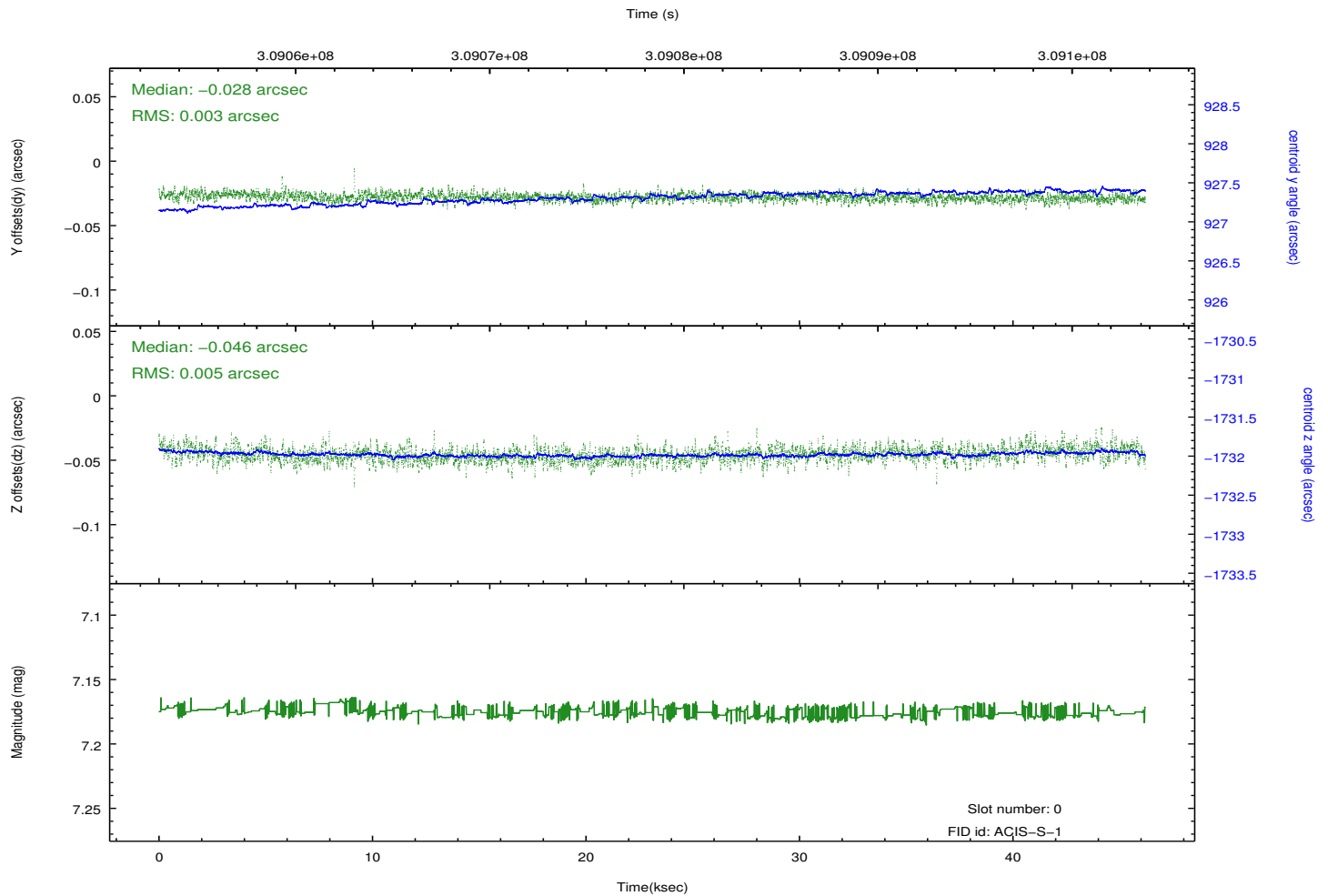
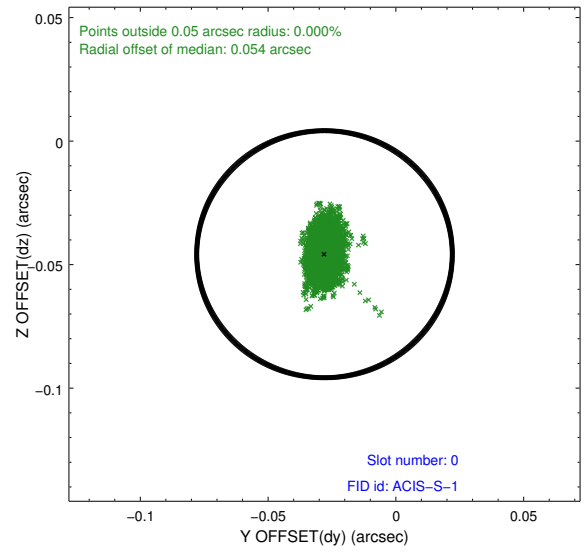
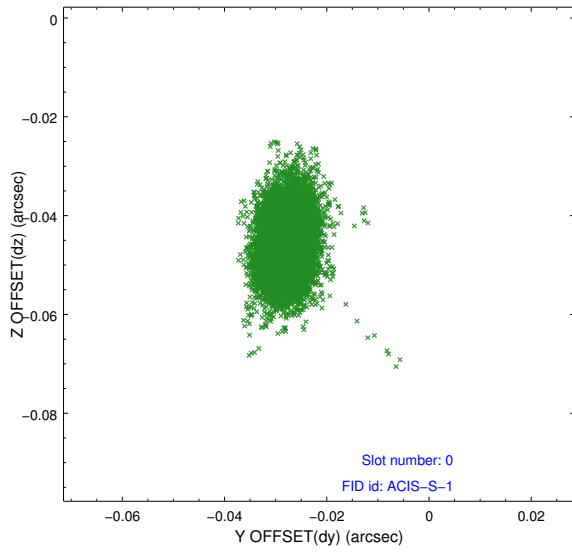


2.4.5 Slot 7

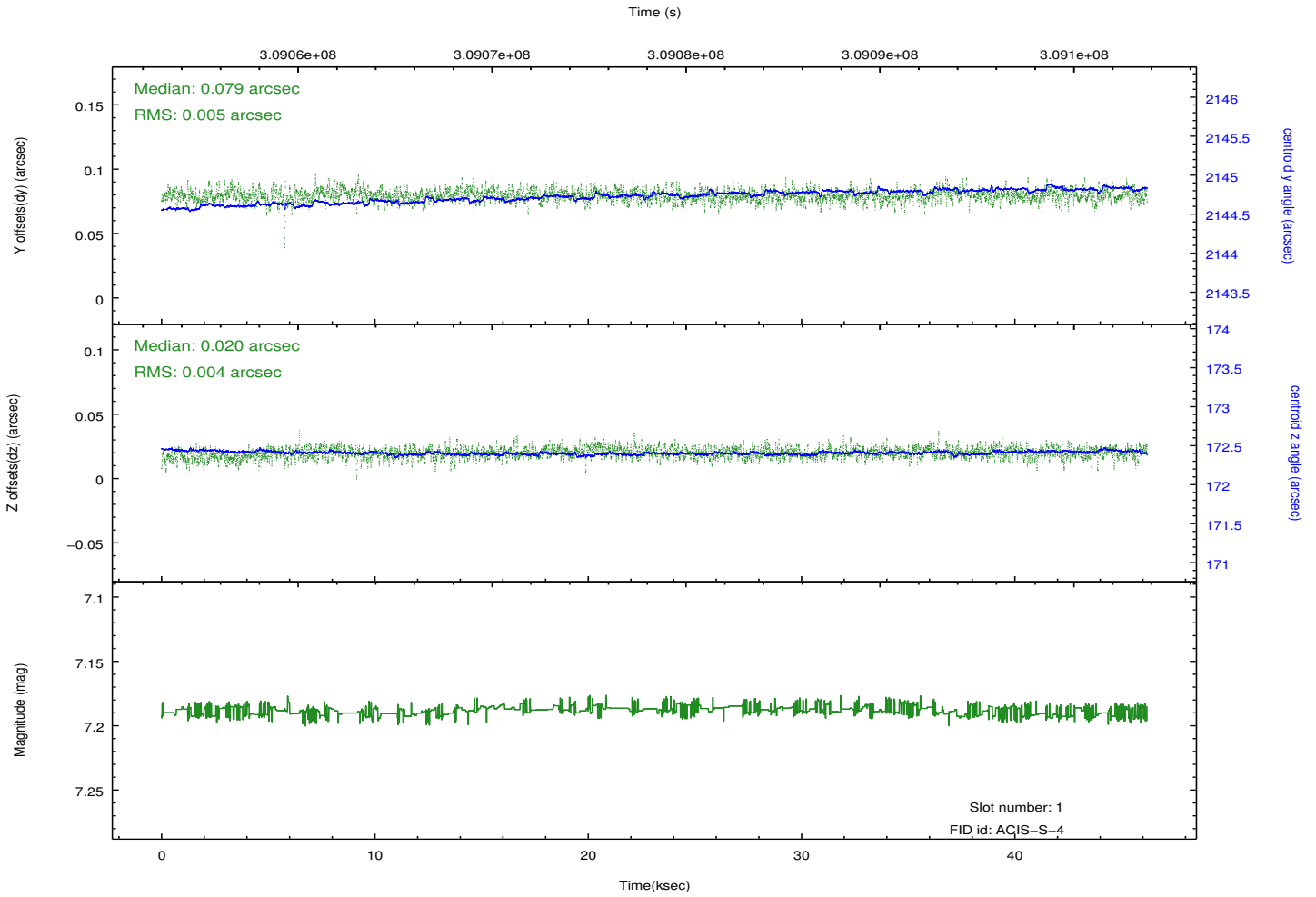
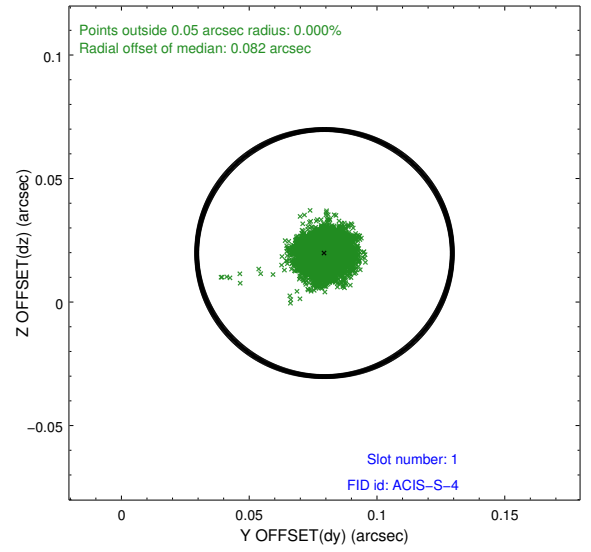
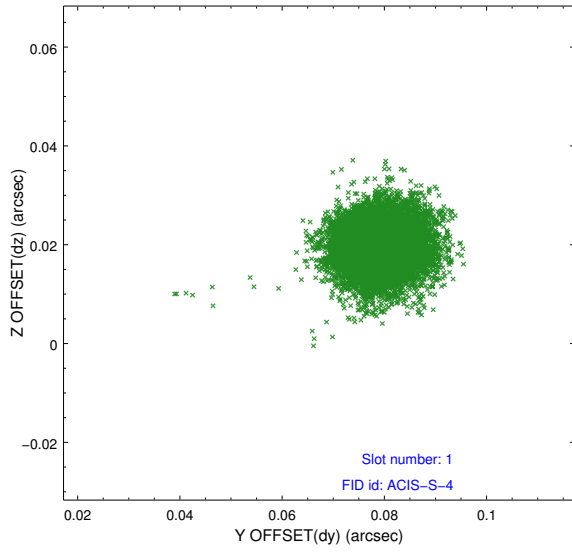


2.5 FID Slots

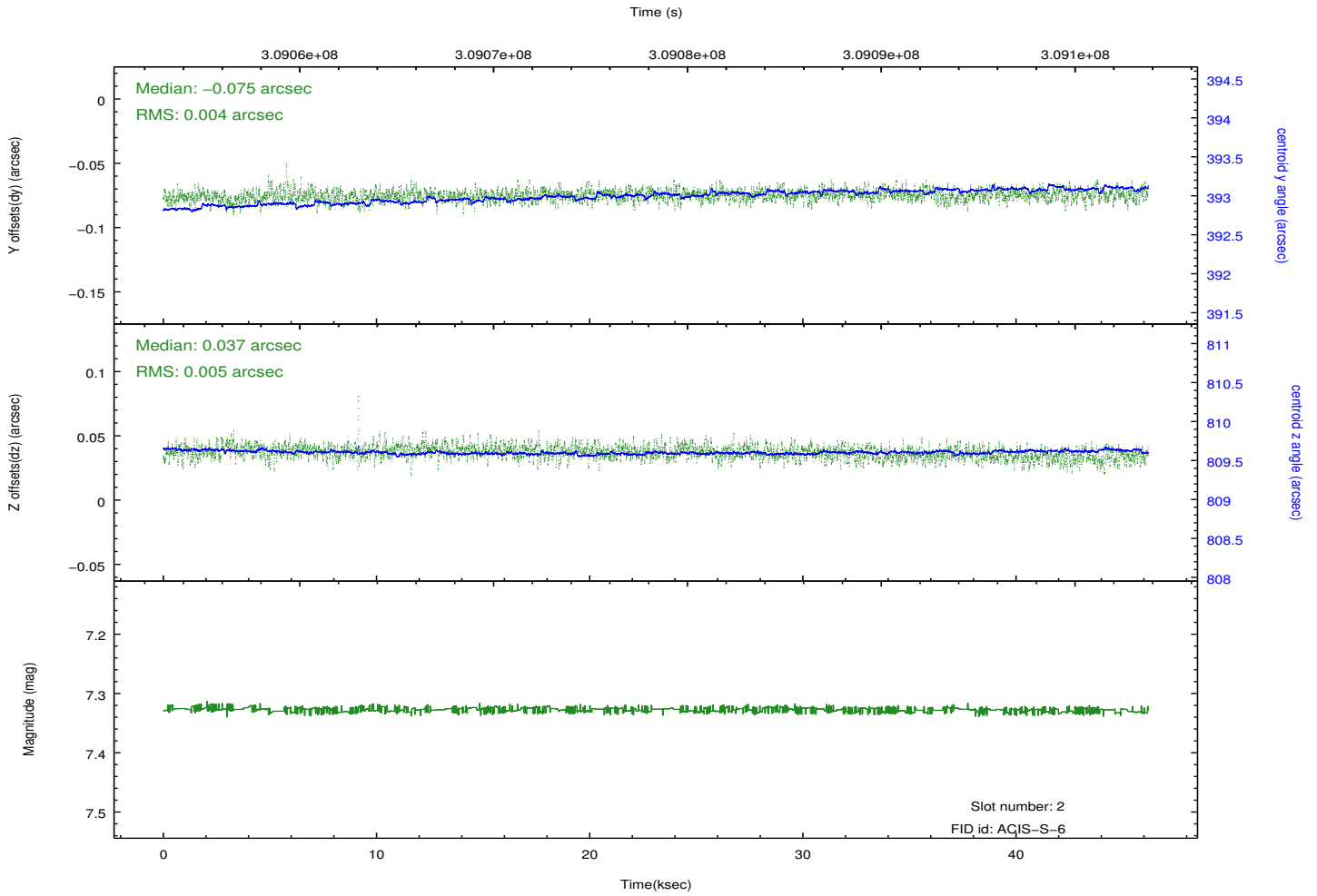
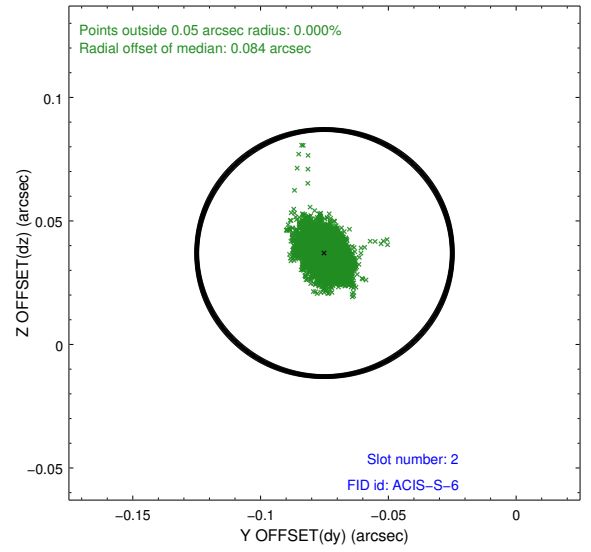
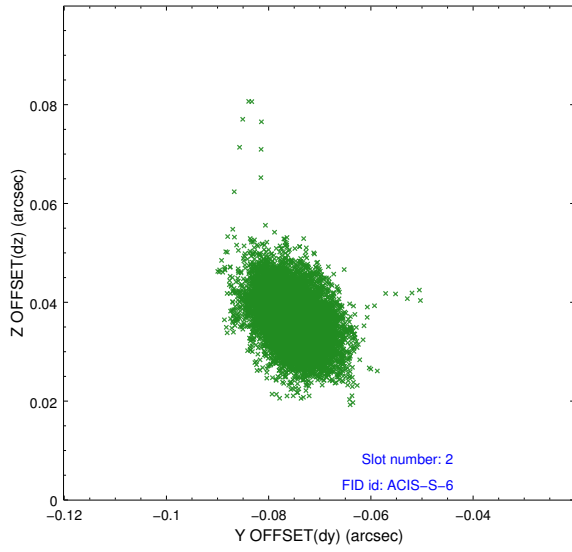
2.5.1 Slot 0



2.5.2 Slot 1



2.5.3 Slot 2



A Summary

A.1 Status

V&V Scientist	Jen Lauer
V&V Date (YYYY-MM-DD)	2012.05.04
V&V Edition	1
V&V Disposition and Status	OK
V&V Charge Time	46.1993003

A.2 Comments