

V&V Reference Report

L2 ASCDS Version : 8.1.1

Observation 799 - L2 Version 4
Chandra X-Ray Center

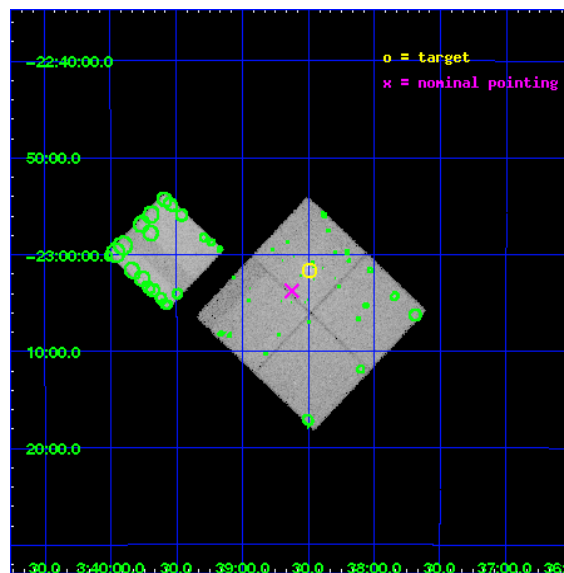
L2 Processing Date : Nov 29 2009

Contents

1	Front	2
2	OBI	3
2.1	OBI	3
2.1.1	Images	3
2.1.2	Bias	3
2.1.3	Parameters	4
2.1.4	Events	4
2.2	Compared Parameters	5
2.3	Aspect	6
2.4	Star Slots	9
2.4.1	Slot 3	9
2.4.2	Slot 4	10
2.4.3	Slot 5	11
2.4.4	Slot 6	12
2.4.5	Slot 7	13
2.5	FID Slots	14
2.5.1	Slot 0	14
2.5.2	Slot 1	15
2.5.3	Slot 2	16
3	Point Sources	17
A	Summary	18
A.1	Status	18
A.2	Comments	18

1 Front

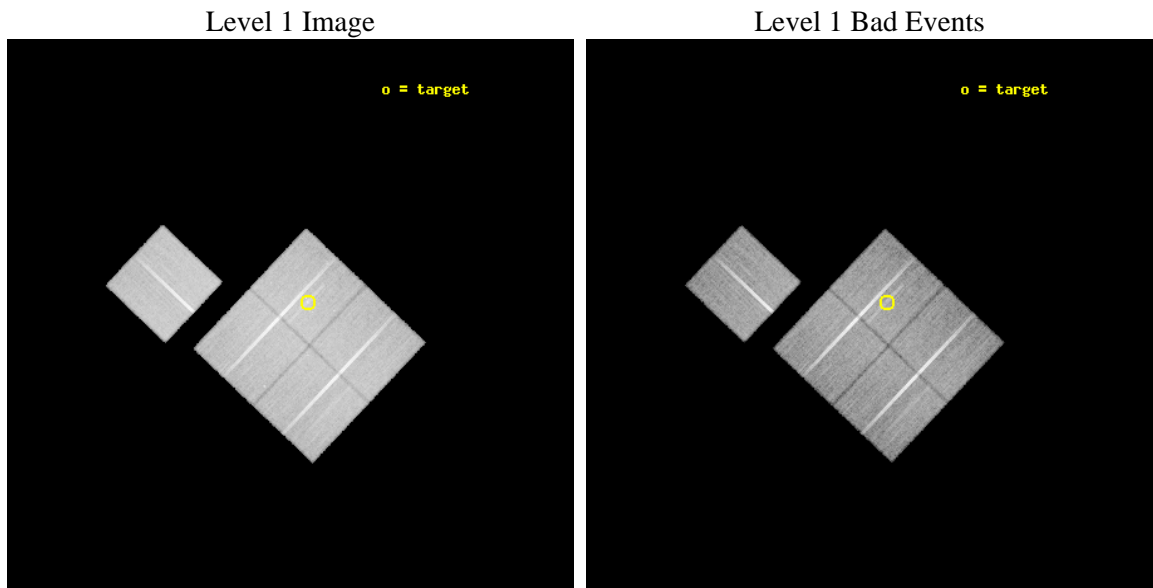
seq_num	600102	Sequence number
obs_id	799	Observation id
title	HOT AND COLD GAS, DARK MATTER, AND HEAVY ELEMENTS IN ELLIPTICAL GALAXIES	Proposal title
observer	Dr. Christine Jones	Principal investigator
object	NGC 1395	Source name
dtcycle	0	
cycle	P	events from which exps? Prim/Second/Both
ra_targ	54.623333	Observer's specified target RA
dec_targ	-23.027778	Observer's specified target Dec
ra_nom	54.656352186091	Nominal RA
dec_nom	-23.062963986685	Nominal Dec
roll_nom	313.50285254436	Nominal Roll
revision	4	Processing version of data
ontime	27718.400025815	Sum of GTIs [s]
livetime	27367.412954671	Livetime [s]
ontime0	27718.400025815	Sum of GTIs [s]
ontime1	27718.400025815	Sum of GTIs [s]
ontime2	27718.400025815	Sum of GTIs [s]
ontime3	27718.400025815	Sum of GTIs [s]
ontime6	27718.400025815	Sum of GTIs [s]
l2events	226745	Number of level 2 events



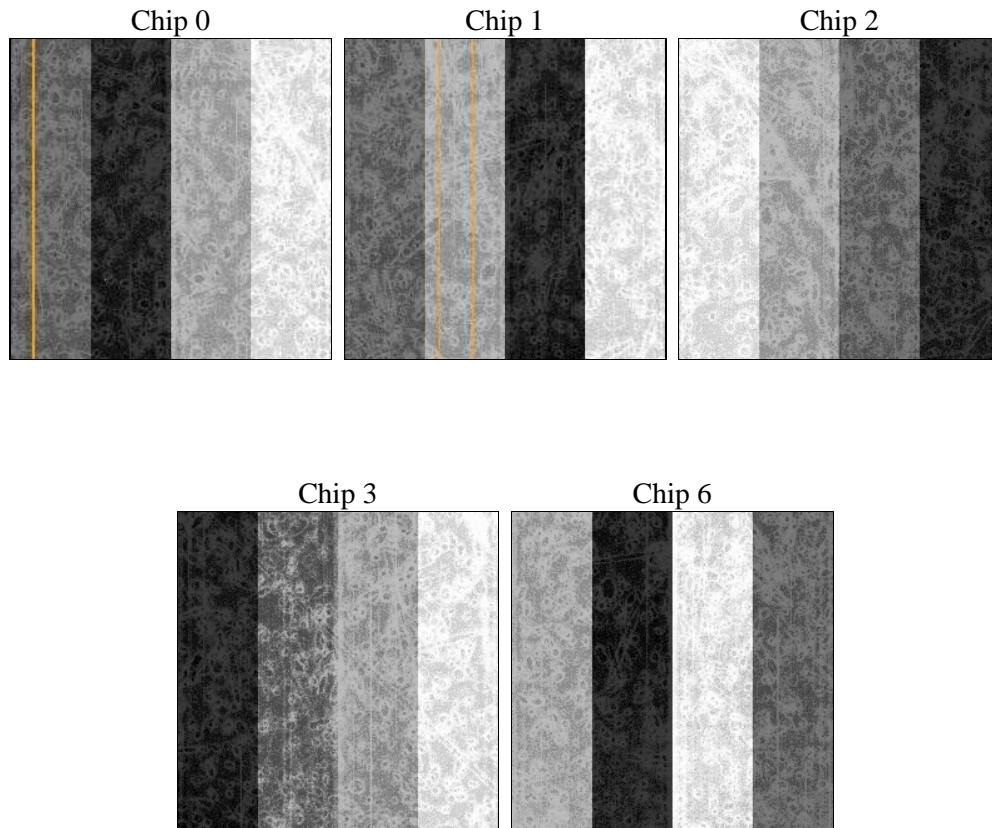
2 OBI

2.1 OBI

2.1.1 Images



2.1.2 Bias



2.1.3 Parameters

obi_num	0	Obi number	sched_exp_time	28538.329000	Scheduled observation exposure time
ascdsver	8.1.1	ASCDS version number	ontime	27718.400025815	Sum of GTIs [s]
caldbver	4.1.4	 	ontime0	27718.400025815	Sum of GTIs [s]
date	2009-11-29T21:33:01	Date and time of file creation	ontime1	27718.400025815	Sum of GTIs [s]
revision	3	Processing version of data	ontime2	27718.400025815	Sum of GTIs [s]
			ontime3	27718.400025815	Sum of GTIs [s]
			ontime6	27718.400025815	Sum of GTIs [s]
			l1events	1296081	Number of level 1 events

2.1.4 Events

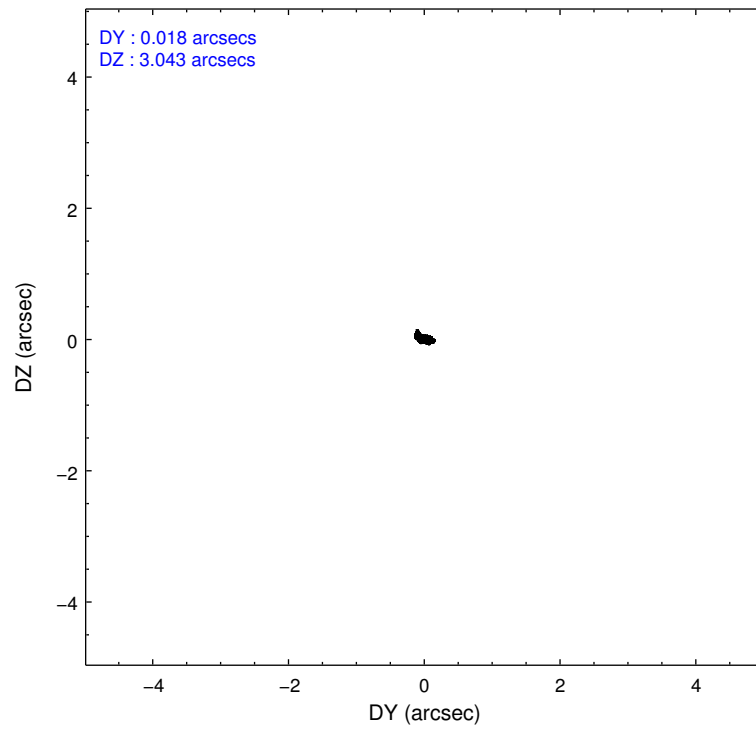
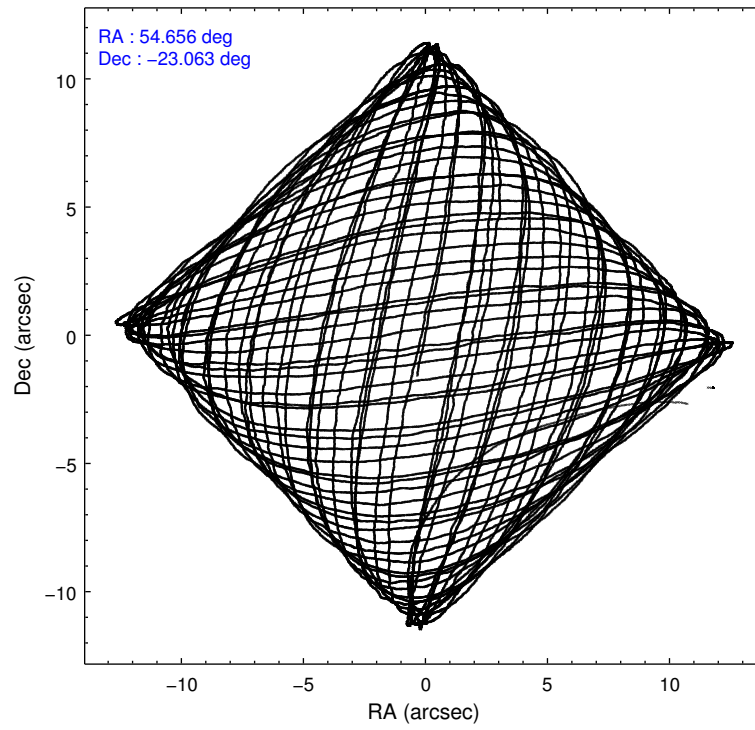
	ccd 0	ccd 1	ccd 2	ccd 3	ccd 6
level 1 events	246554	244283	262380	260129	282735
rejected events	204148	198957	220854	212026	221081
rejected %	82%	81%	84%	81%	78%

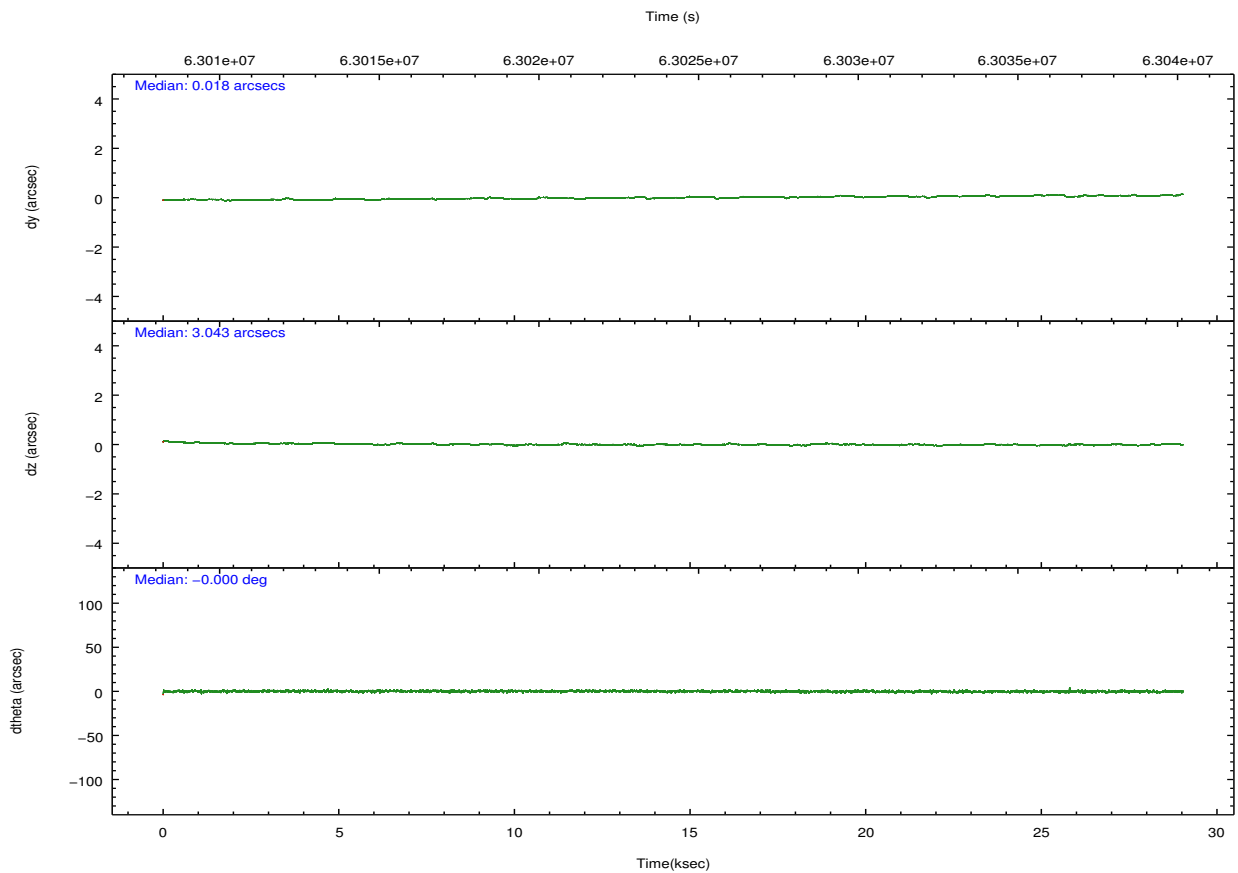
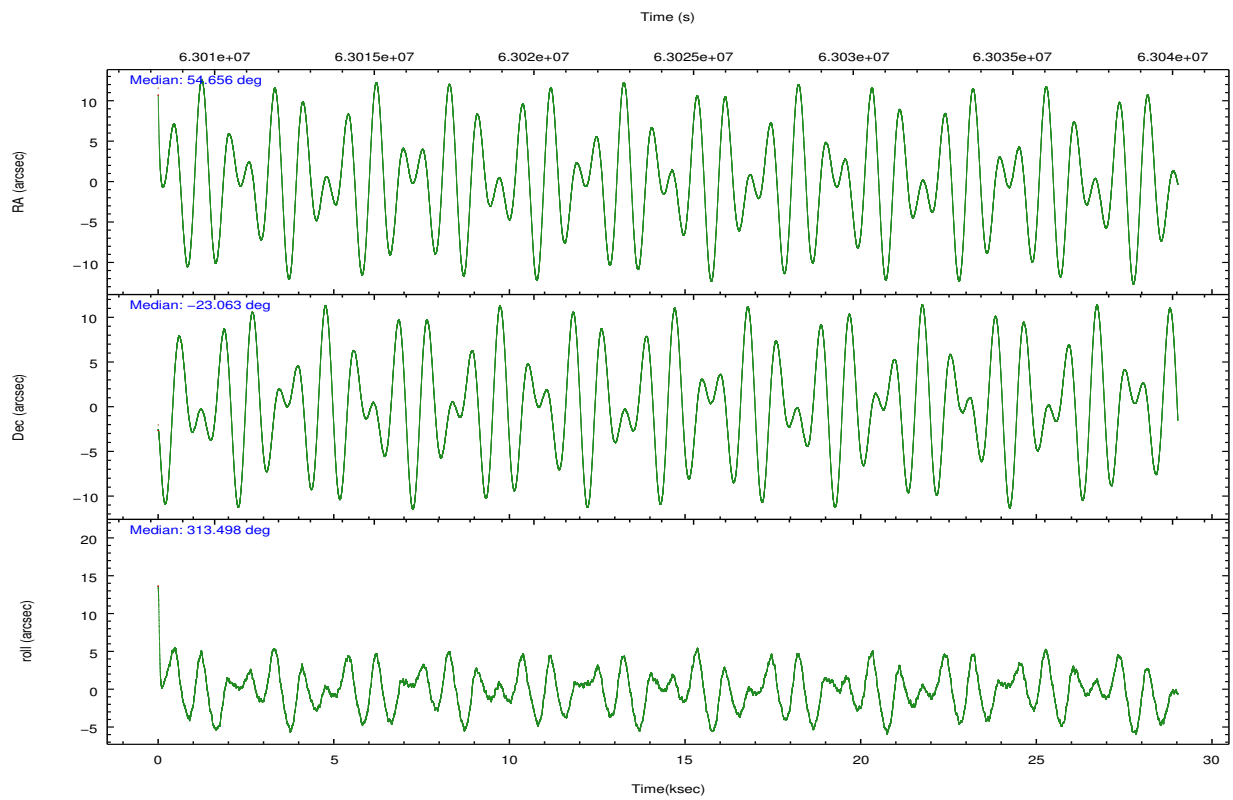
	ccd 0	ccd 1	ccd 2	ccd 3	ccd 6
grade 0 events	12176	12475	11008	14692	17236
	4%	5%	4%	5%	6%
grade 1 events	59	66	66	69	86
	0%	0%	0%	0%	0%
grade 2 events	20623	21858	21126	23828	33786
	8%	8%	8%	9%	11%
grade 3 events	1756	2077	1547	1587	1626
	0%	0%	0%	0%	0%
grade 4 events	1672	1986	1528	1547	1593
	0%	0%	0%	0%	0%
grade 5 events	4693	4850	4157	4513	4833
	1%	1%	1%	1%	1%
grade 6 events	6183	6931	6322	6451	7416
	2%	2%	2%	2%	2%
grade 7 events	199392	194040	216626	207442	216159
	80%	79%	82%	79%	76%

2.2 Compared Parameters

Parameter	Planned	Actual	Parameter	Planned	Actual
Instrument	ACIS	ACIS	Obspar format version number	6	6
Detector	ACIS-01236	ACIS-01236	Obspar file type	PREDICTED	ACTUAL
Grating	NONE	NONE	Obspar update status	NONE	UPDATED
Data mode	FAINT	FAINT	Number of optional ACIS chips dropped	0	0
Observation mode	POINTING	POINTING	On-chip summing requested	N	N
Pointing RA	54.627579	54.65635218609077	Subarray requested	NONE	NONE
Pointing Dec	-23.054782	-23.0629639866849	Alternating exposures requested	N	N
Pointing Roll	313.282888	313.5028525443587	Primary exposure time	0.000000	3.2
SIM focus pos (mm)	-0.782348	-0.7809083437167272			
SIM defocus (mm)	0	0.001439871863259334			
SIM translation stage pos (mm)	-226.092463	-226.0847176009736			
SIM translation stage offset (mm)	-7.5	-7.50773540195604			
Observation start time	63010176.184000	63009113.645607			
Observation start date	1999-12-31T06:48:32	1999-12-31T06:31:53			
Observation end time	63038715.184000	63039303.996701			
Observation end date	1999-12-31T14:44:11	1999-12-31T14:55:03			
Read mode	TIMED	TIMED			

2.3 Aspect



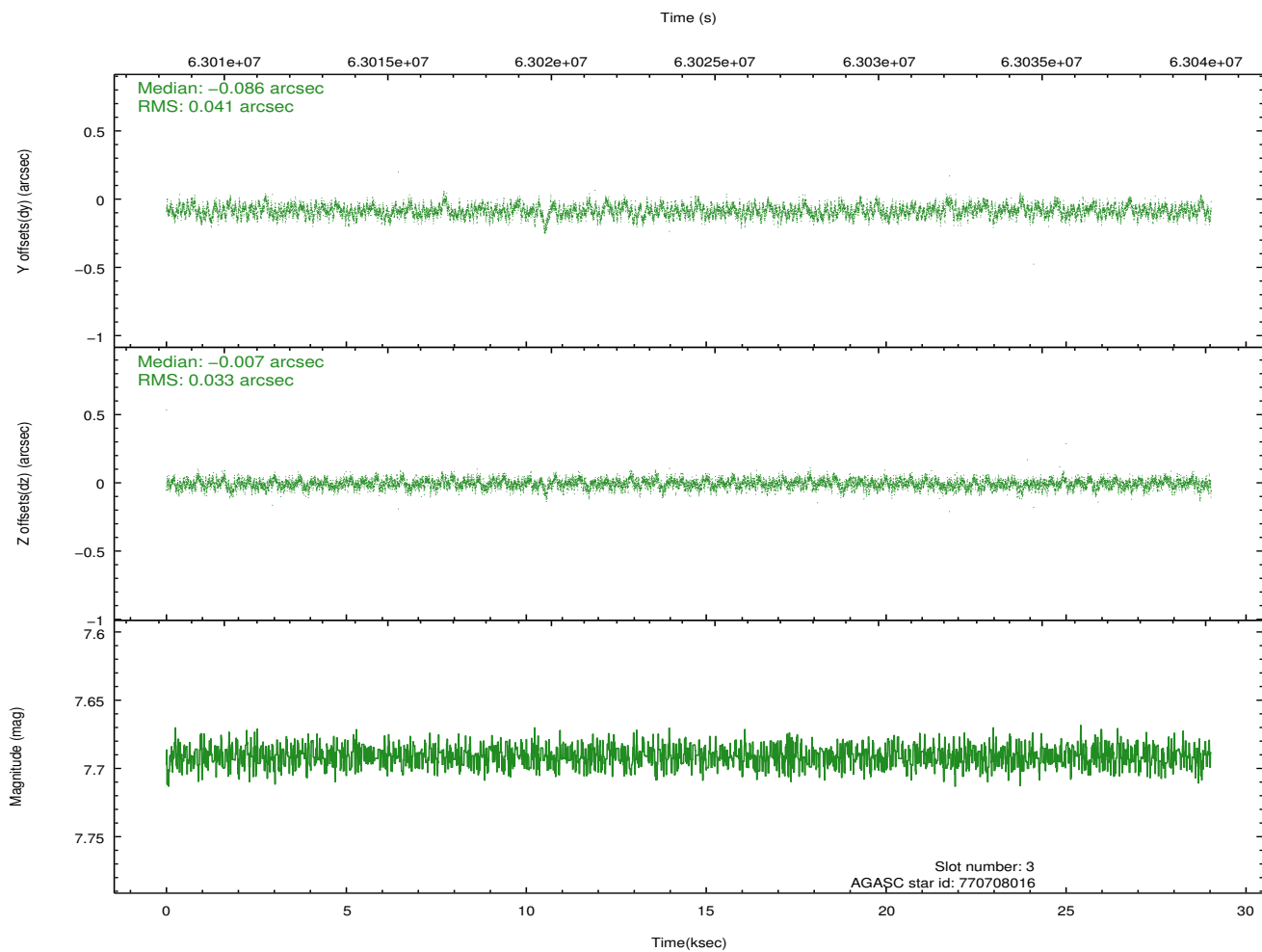
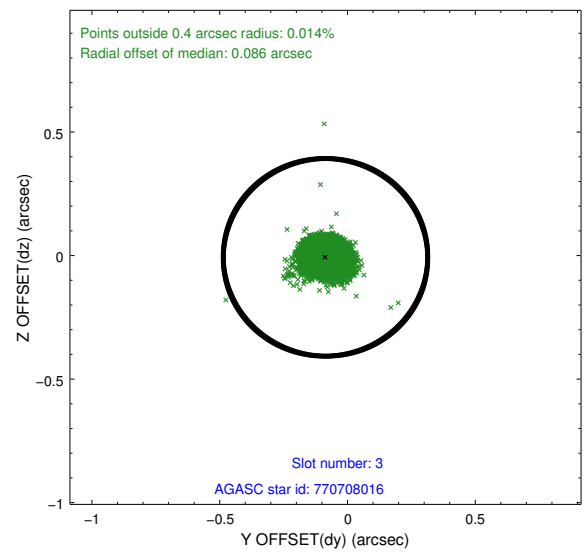
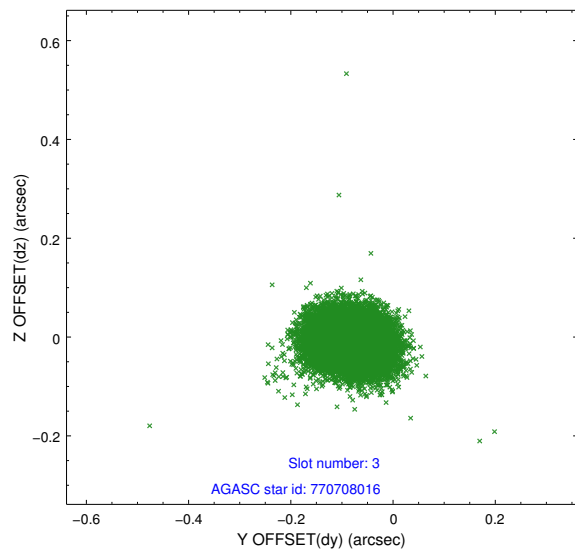


Slot Statistics

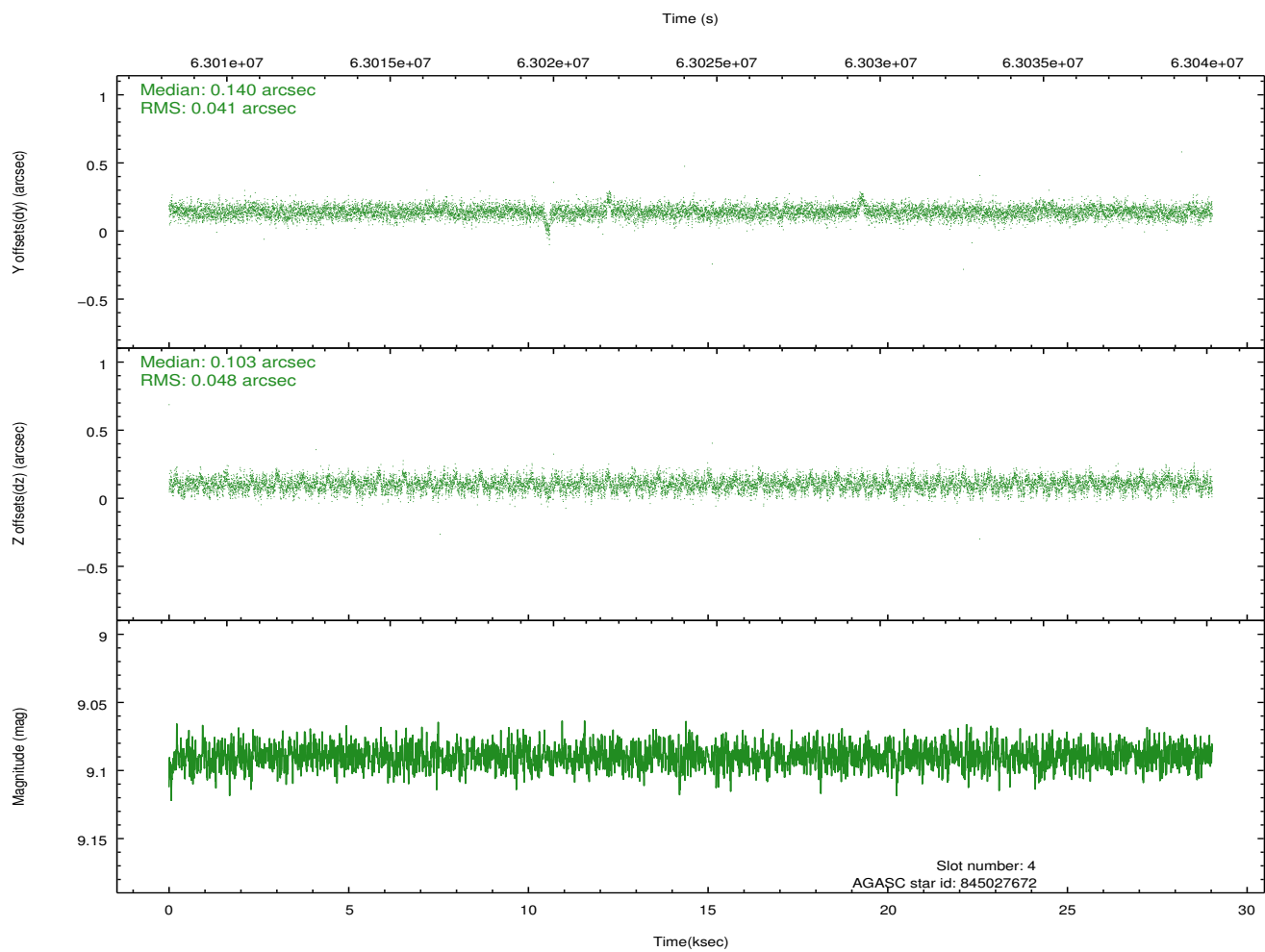
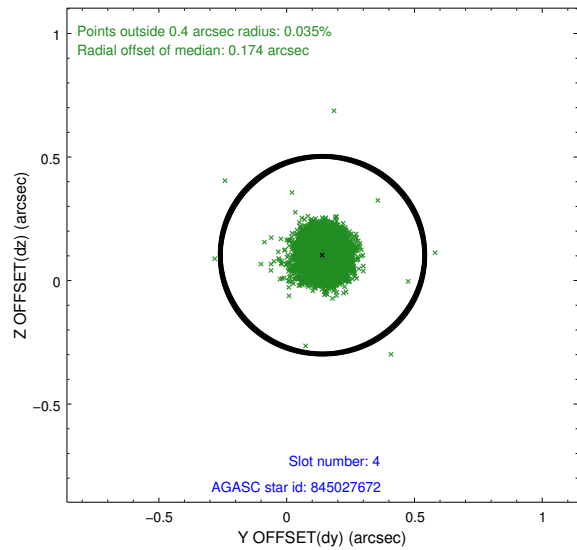
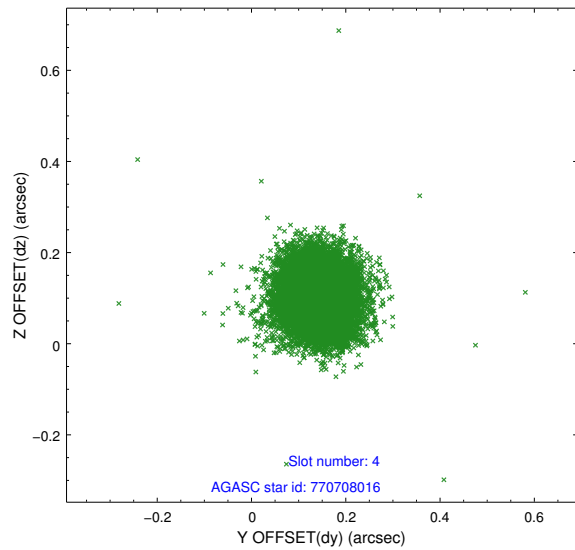
slot	status	id	mag	n_pts	med_dy	med_dz	dr1	dr2	ra	dec	mean_y	mean_z
0	FID	ACIS-I-2	7.21	14162	-0.043	0.076	0.009	0.015	0.000000	0.000000	-754.92	-985.72
1	FID	ACIS-I-4	7.20	14162	0.027	0.012	0.006	0.011	0.000000	0.000000	2159.25	920.25
2	FID	ACIS-I-5	7.23	14162	-0.084	-0.020	0.009	0.014	0.000000	0.000000	-1808.38	917.20
3	GUIDE	770708016	7.69	14158	-0.086	-0.007	0.056	0.090	54.567468	-22.265290	-2205.96	1803.01
4	GUIDE	845027672	9.09	14151	0.140	0.103	0.066	0.108	54.618822	-23.086795	64.64	-99.54
5	GUIDE	845028000	9.39	14086	0.161	0.177	0.085	0.136	55.483148	-23.103724	2077.28	1936.65
6	GUIDE	845029464	9.19	14091	-0.533	-0.314	0.092	0.146	53.763981	-23.154830	-1691.09	-2333.64
7	GUIDE	845026600	9.86	14037	0.319	0.036	0.112	0.179	54.766574	-23.692822	1987.45	-1241.09

2.4 Star Slots

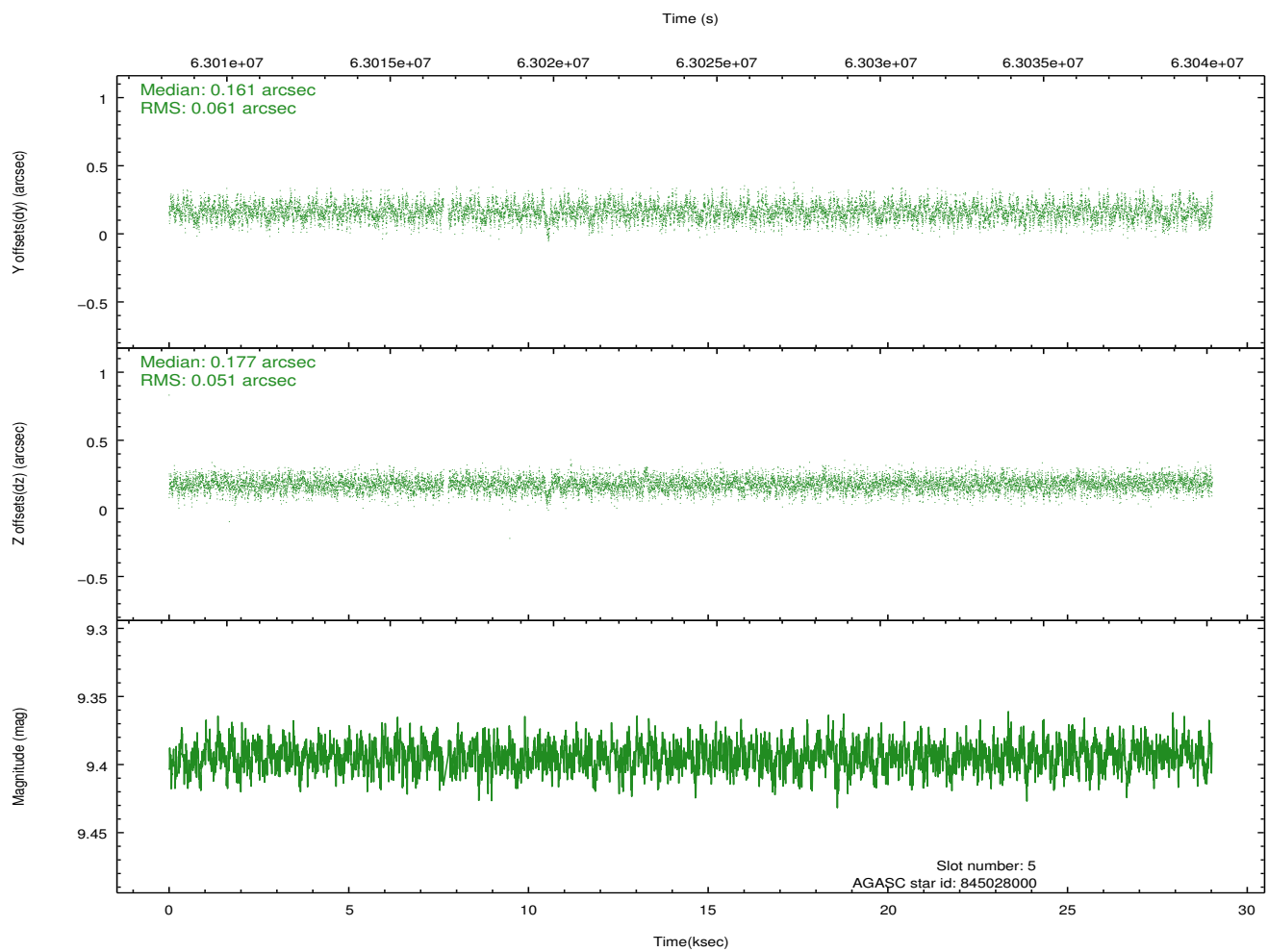
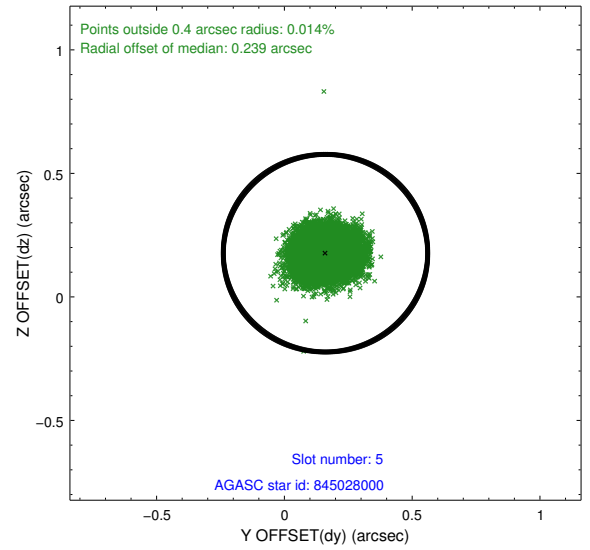
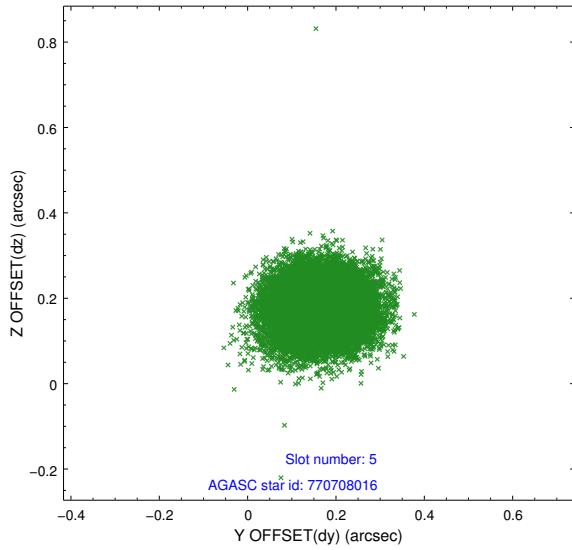
2.4.1 Slot 3



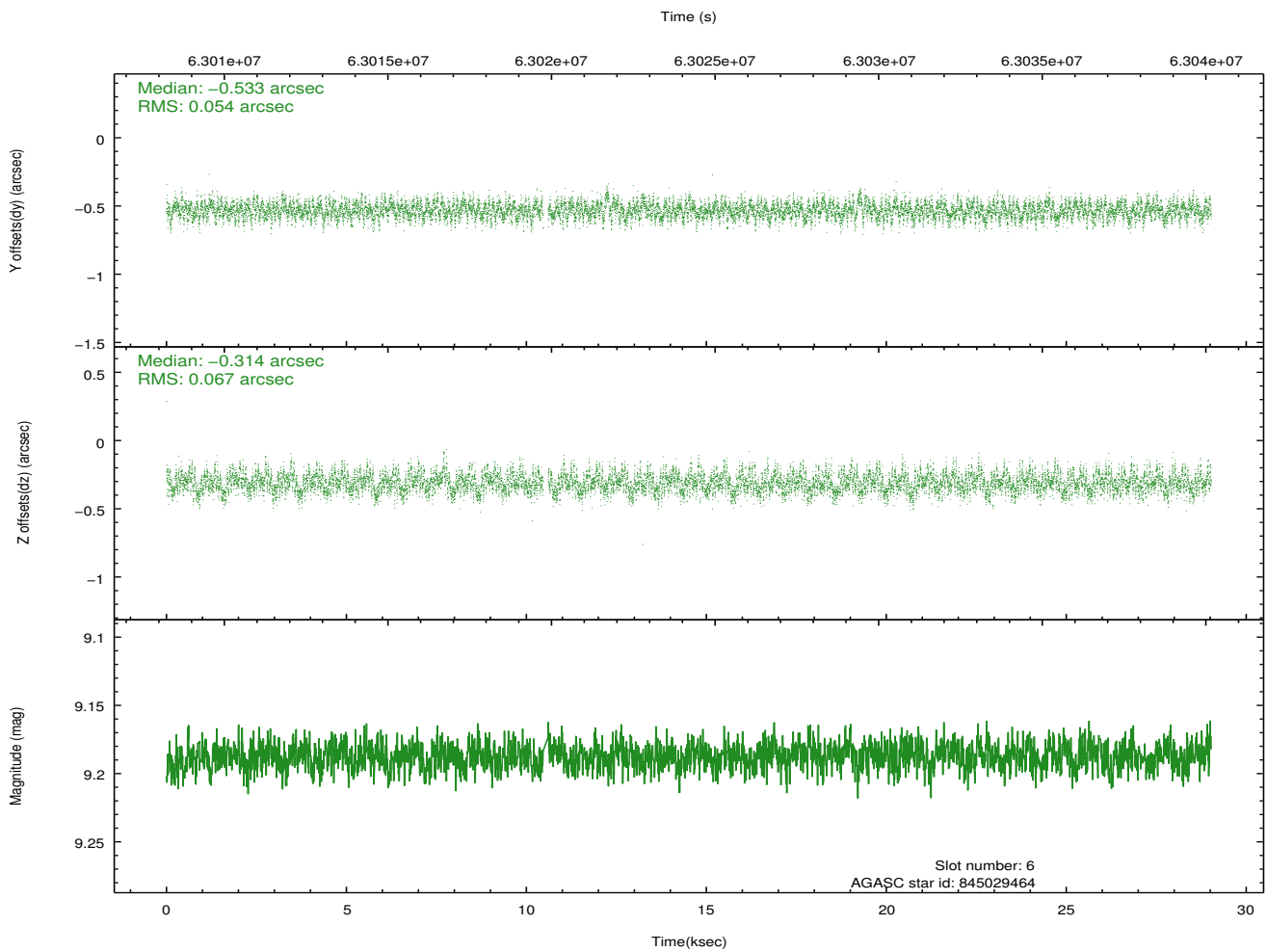
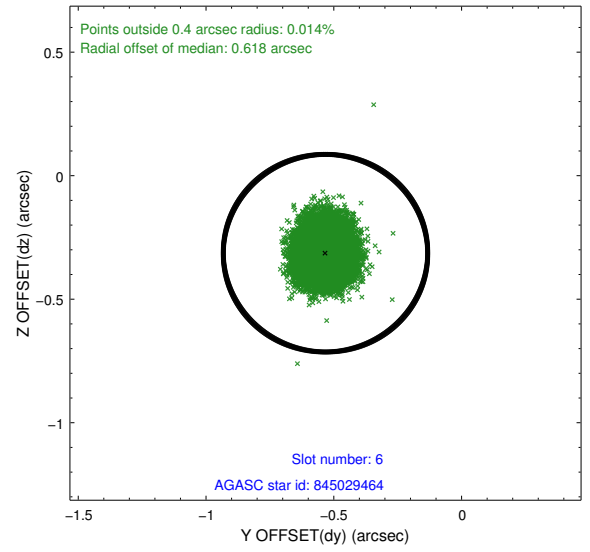
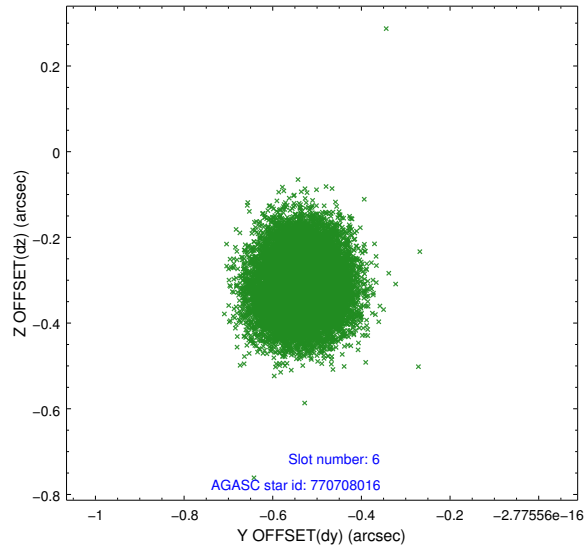
2.4.2 Slot 4



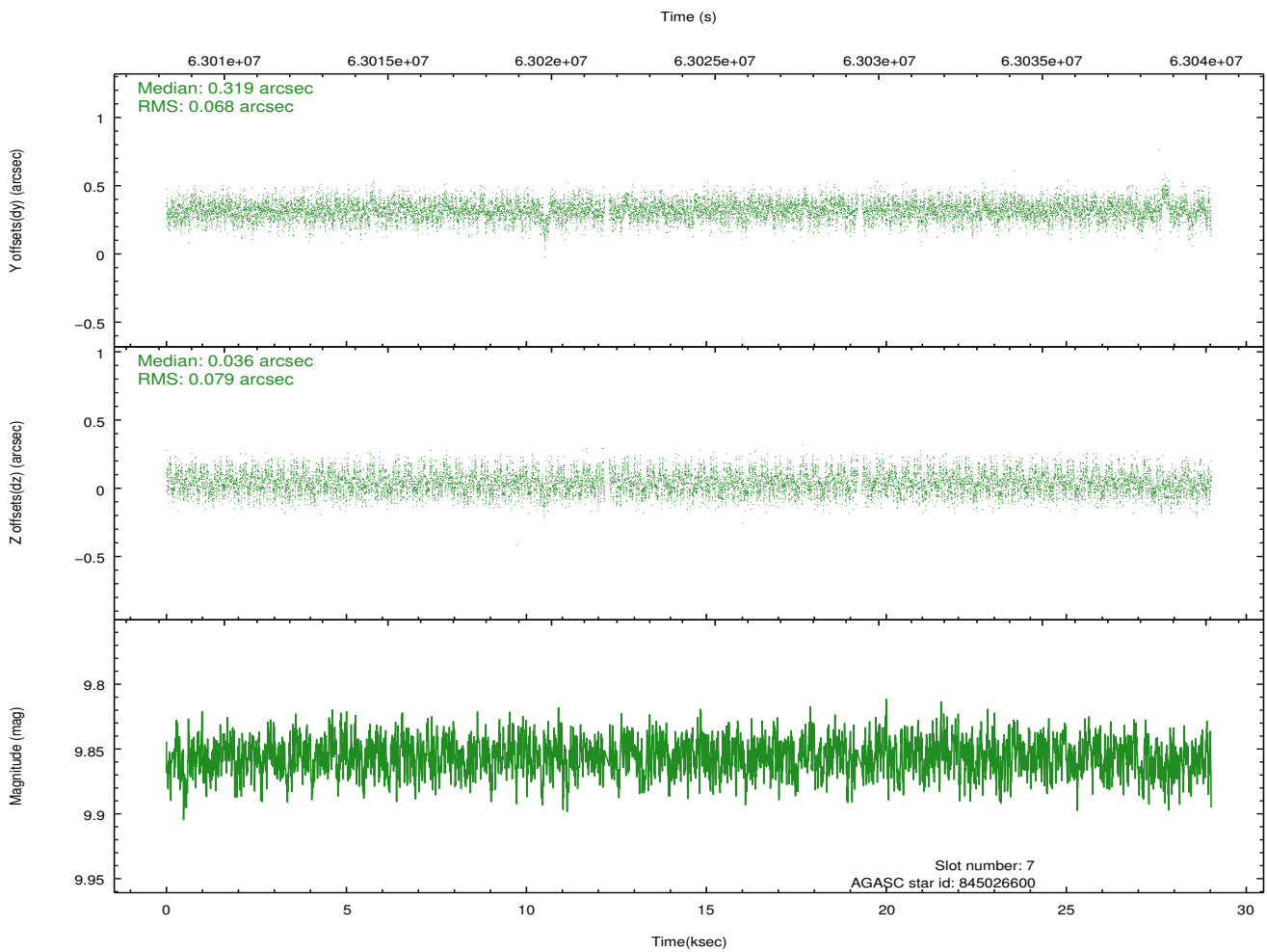
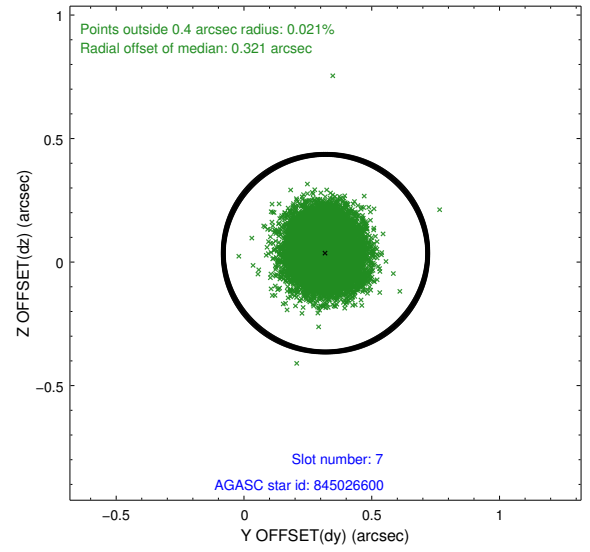
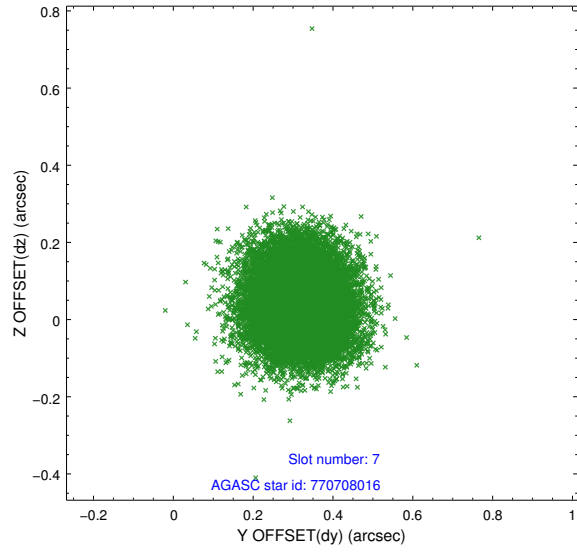
2.4.3 Slot 5



2.4.4 Slot 6

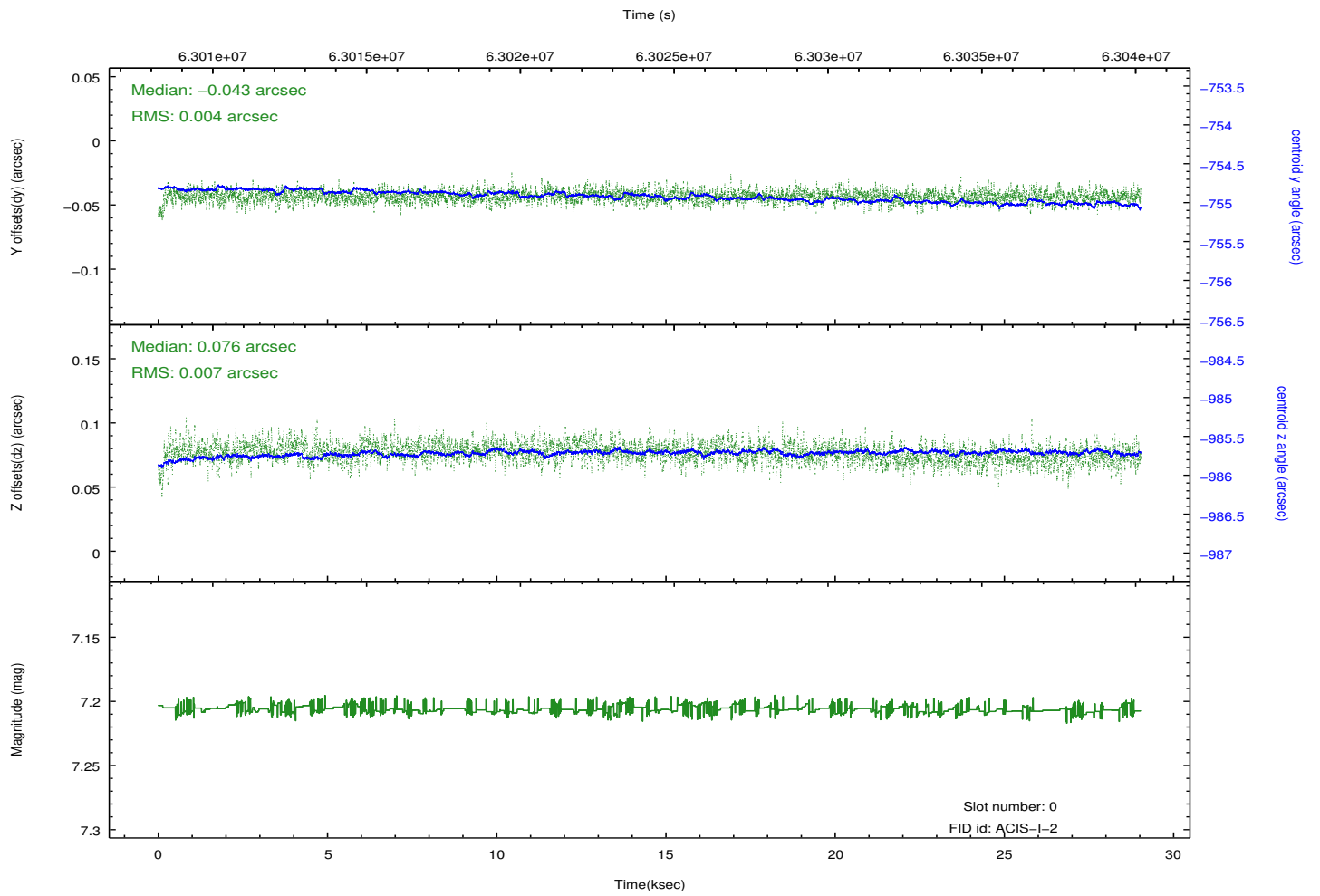
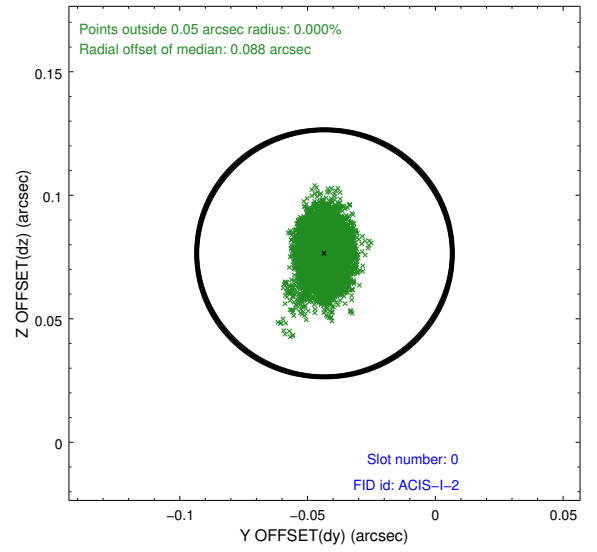
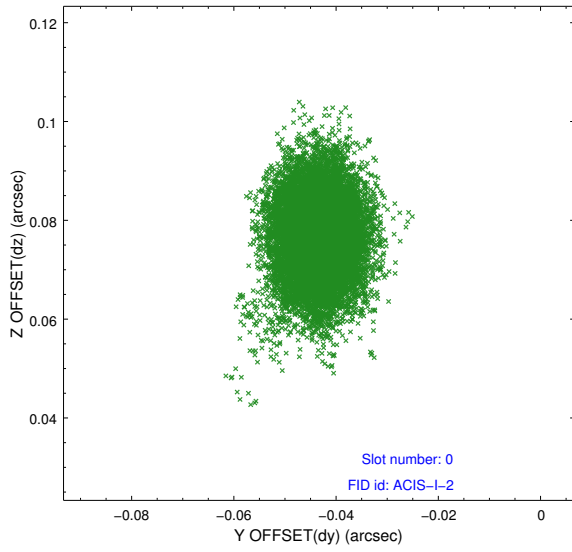


2.4.5 Slot 7

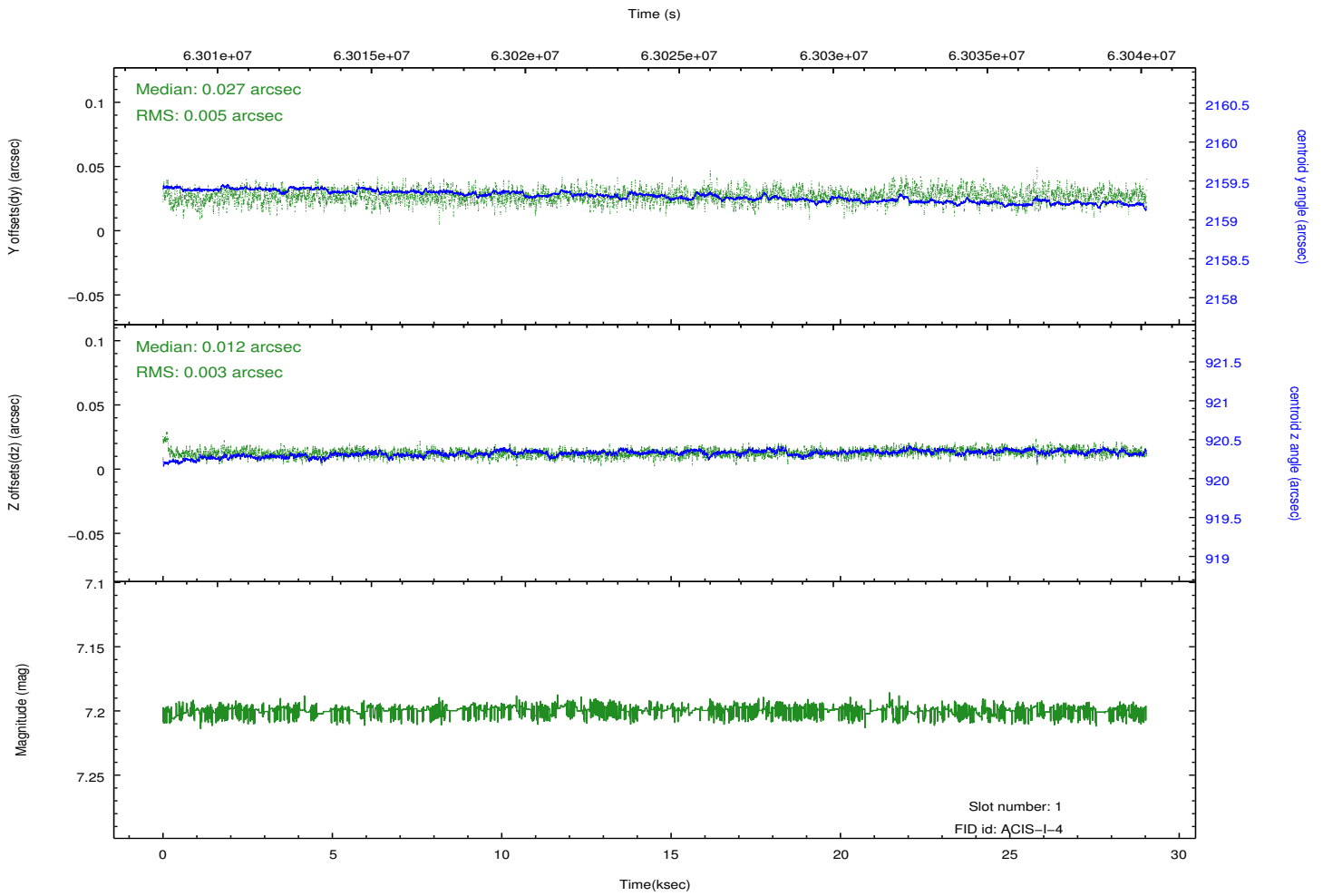
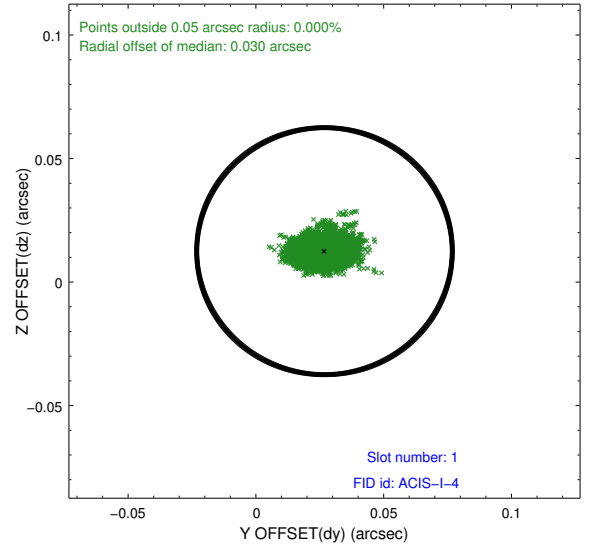
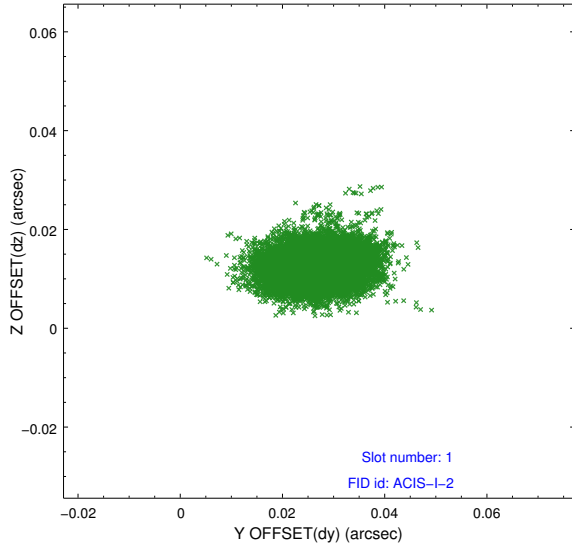


2.5 FID Slots

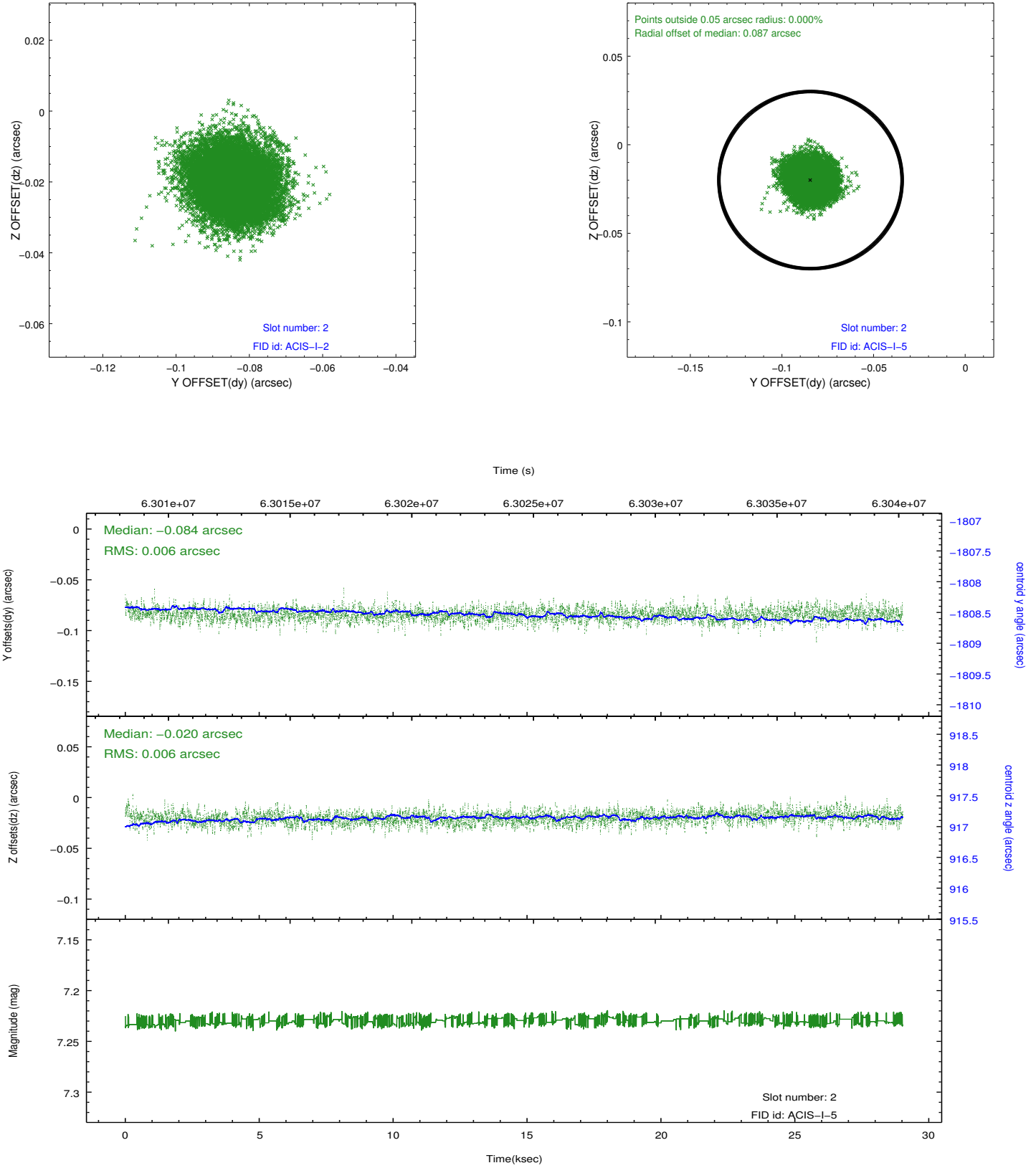
2.5.1 Slot 0



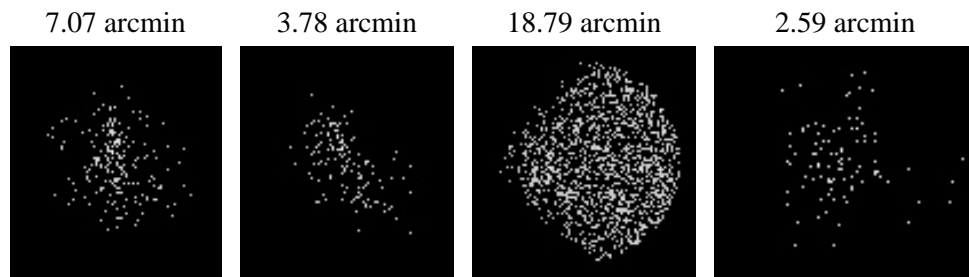
2.5.2 Slot 1



2.5.3 Slot 2



3 Point Sources



A Summary

A.1 Status

V&V Scientist	Joy Nichols
V&V Date (YYYY-MM-DD)	2010.03.05
V&V Edition	1
V&V Disposition and Status	OK
V&V Charge Time	27.686

A.2 Comments

Charge time for this ObsId remains at previous value of 27.686 ksec, although with the current processing the charge time would have been 27.718 ksec.

==

The focal plane temperature is approximately -110 C during this observation. This reprocessing of the data applies no CTI correction because none is available for this temperature at present.

The ACIS CTI correction has not been calibrated at this temperature, because it was early in the mission, and ACIS had not yet been lowered to the standard -119.7 C. Both front and back illuminated chips are affected. However a T_GAIN correction has been applied to the BI chips (ACIS-5 and ACIS-7) data included here.

The ACIS spectral response calibration is less accurate at these warmer temperatures than it is at -119.7 C. Users whose science objectives depend on the most accurate spectral response (ie: fitting line-rich spectra) may notice an effect. Users whose science objectives do not depend on the most accurate spectral response should not notice an effect.