

V&V Reference Report

L2 ASCDS Version : 8.4.3.1

Observation 8009 - L2 Version 3
Chandra X-Ray Center

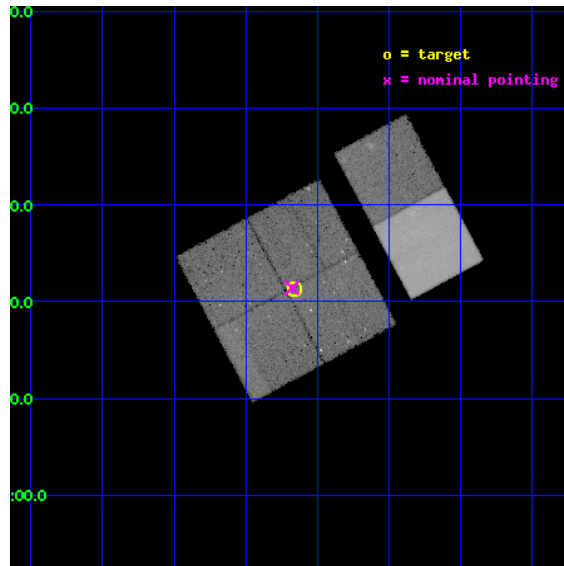
L2 Processing Date : Apr 16 2012

Contents

1	Front	2
2	OBI	3
2.1	OBI	3
2.1.1	Images	3
2.1.2	Bias	3
2.1.3	Parameters	4
2.1.4	Events	4
2.2	Compared Parameters	5
2.3	Aspect	6
2.4	Star Slots	9
2.4.1	Slot 3	9
2.4.2	Slot 4	10
2.4.3	Slot 5	11
2.4.4	Slot 6	12
2.4.5	Slot 7	13
2.5	FID Slots	14
2.5.1	Slot 0	14
2.5.2	Slot 1	15
2.5.3	Slot 2	16
A	Summary	17
A.1	Status	17
A.2	Comments	17

1 Front

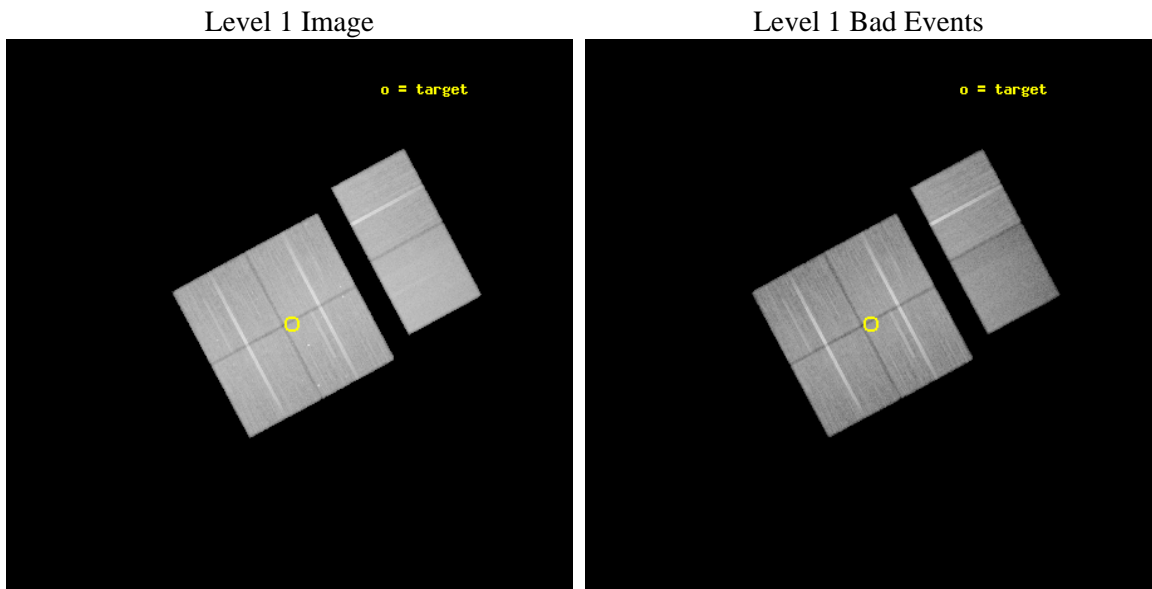
seq_num	900553	Sequence number
obs_id	8009	Observation id
title	THE CHANDRA-COSMOS SURVEY	Proposal title
observer	Dr. Martin Elvis	Principal investigator
object	C-COSMOS3-6	Source name
dtcycle	0	
cycle	P	events from which exps? Prim/Second/Both
ra_targ	149.790879	Observer's specified target RA [deg]
dec_targ	2.354083	Observer's specified target Dec [deg]
ra_nom	149.79450036301	Nominal RA [deg]
dec_nom	2.3570986307151	Nominal Dec [deg]
roll_nom	61.766799688361	Nominal Roll [deg]
revision	3	Processing version of data
ontime	46527.958826423	Sum of GTIs [s]
livetime	45938.793795989	Livetime [s]
ontime0	46531.199826717	Sum of GTIs [s]
ontime1	46518.235865116	Sum of GTIs [s]
ontime2	46527.958826423	Sum of GTIs [s]
ontime3	46527.958826423	Sum of GTIs [s]
ontime6	46531.199826717	Sum of GTIs [s]
ontime7	46531.199826717	Sum of GTIs [s]
l2events	319429	Number of level 2 events



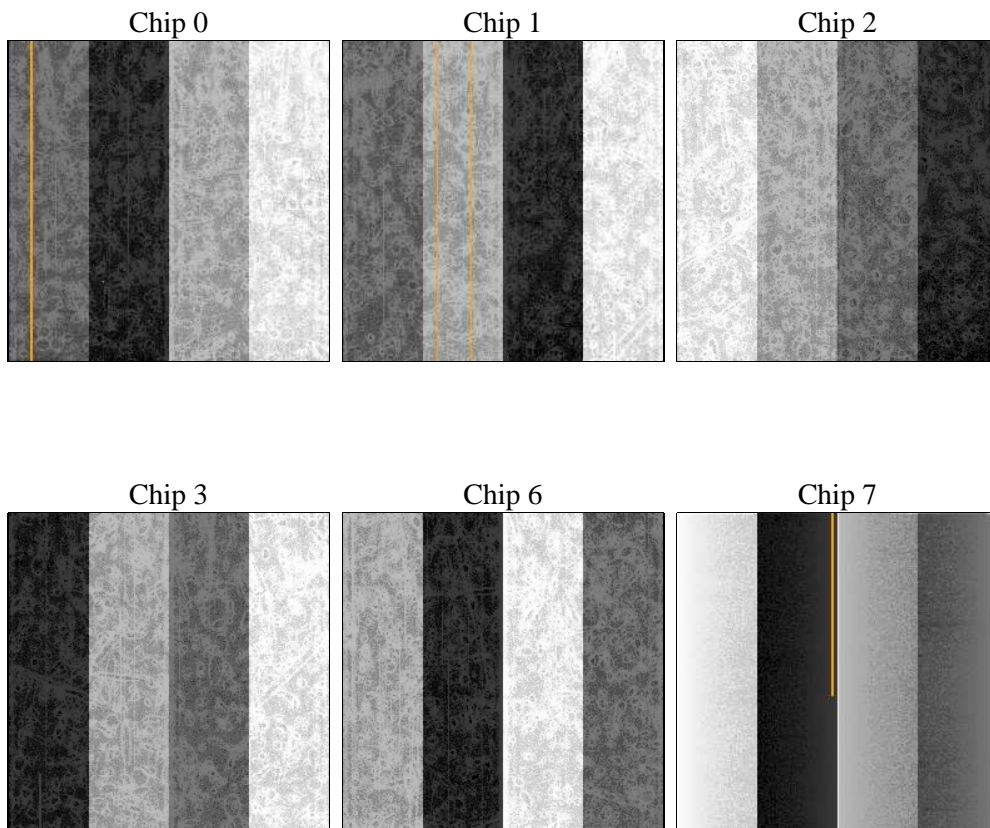
2 OBI

2.1 OBI

2.1.1 Images



2.1.2 Bias



2.1.3 Parameters

obi_num	0	Obi number	sched_exp_time	46791.475000	[s] Scheduled observation exposure time
ascdsver	8.4.3.1	Processing system revision	ontime	46527.958826423	Sum of GTIs [s]
caldbver	4.4.9	 	ontime0	46531.199826717	Sum of GTIs [s]
date	2012-04-16T14:25:49	Date and time of file creation	ontime1	46518.235865116	Sum of GTIs [s]
revision	3	Processing version of data	ontime2	46527.958826423	Sum of GTIs [s]
			ontime3	46527.958826423	Sum of GTIs [s]
			ontime6	46531.199826717	Sum of GTIs [s]
			ontime7	46531.199826717	Sum of GTIs [s]
			l1events	2106453	Number of level 1 events

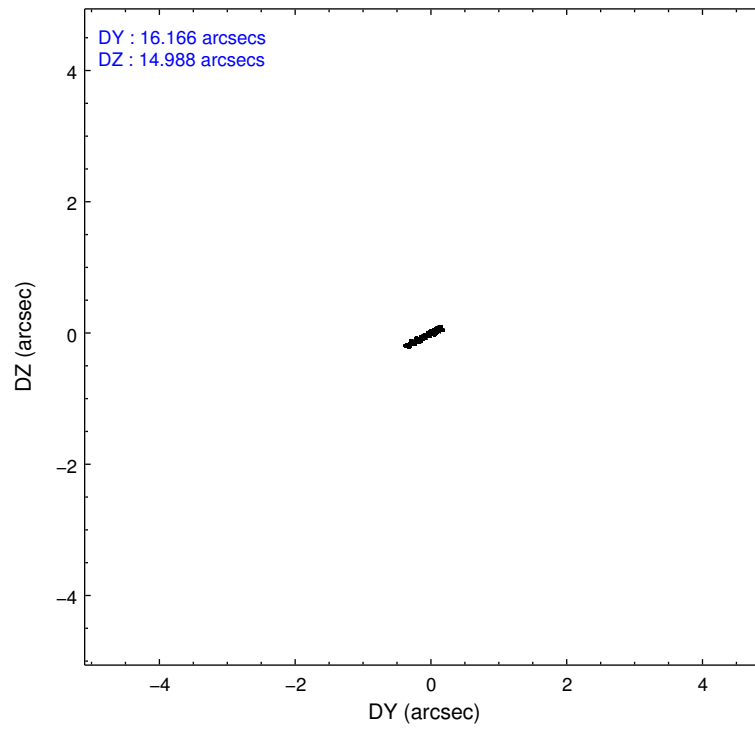
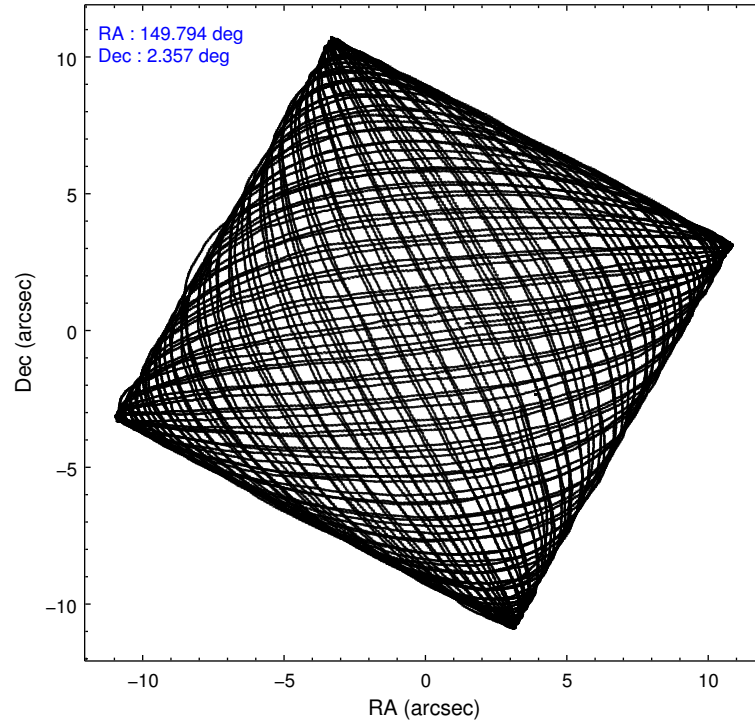
2.1.4 Events

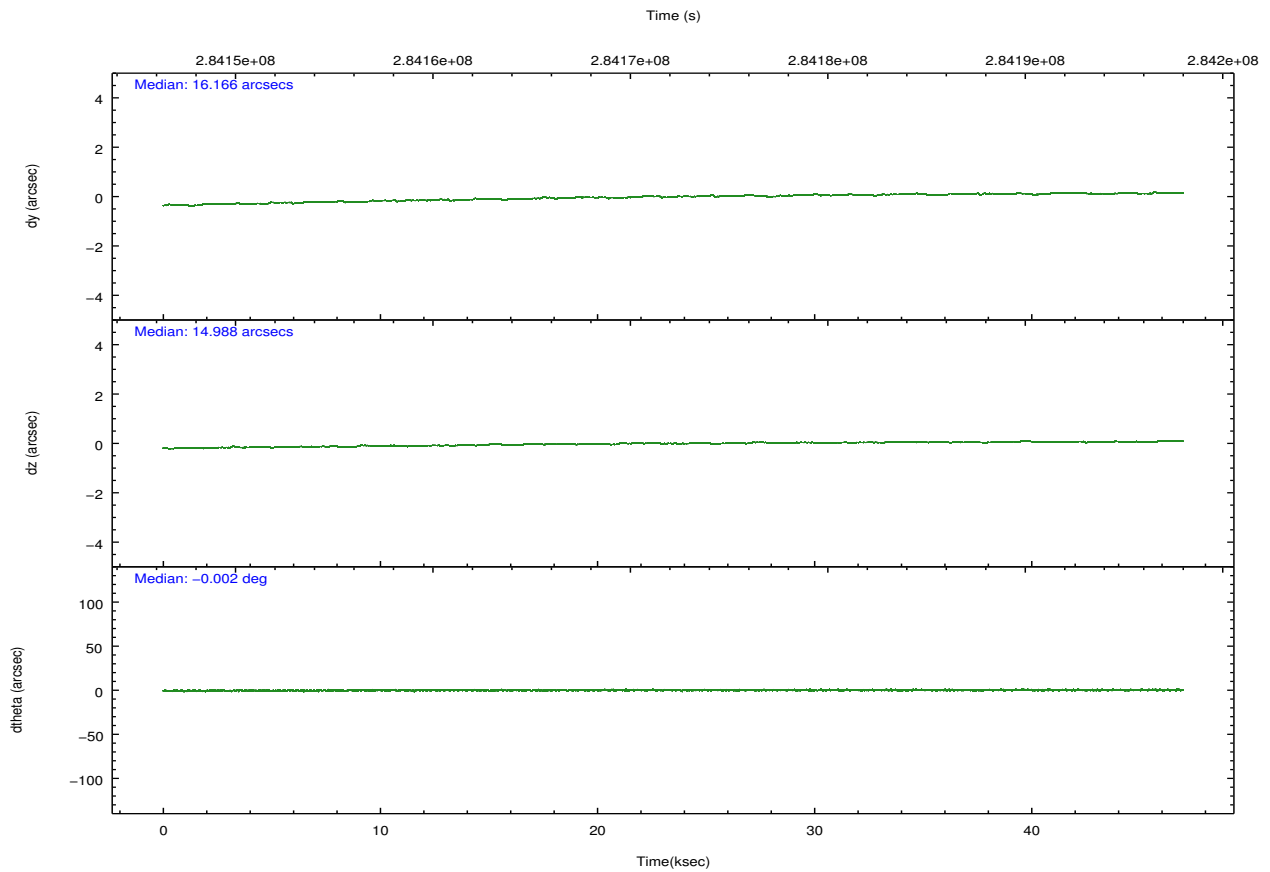
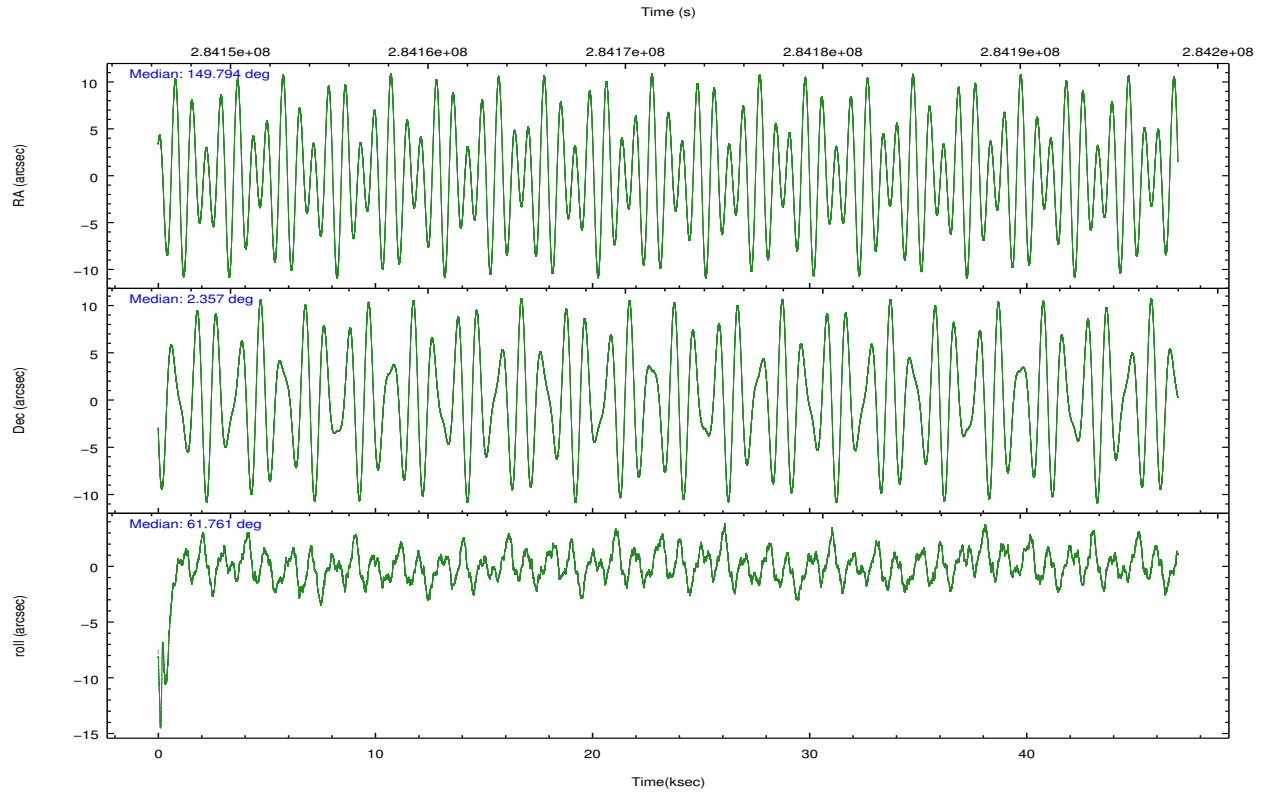
	ccd 0	ccd 1	ccd 2	ccd 3	ccd 6	ccd 7		ccd 0	ccd 1	ccd 2	ccd 3	ccd 6	ccd 7
level 1 events	322978	325951	362374	344414	362569	388167	grade 0 events	12559	13764	12296	13794	12236	16577
rejected events	288288	287707	329134	309369	326748	211443		3%	4%	3%	4%	3%	4%
rejected %	89%	88%	90%	89%	90%	54%	grade 1 events	188	219	179	244	198	428
								0%	0%	0%	0%	0%	0%
							grade 2 events	8205	8555	7731	7077	8054	35318
								2%	2%	2%	2%	2%	9%
							grade 3 events	3803	4128	3552	3835	3869	16272
								1%	1%	0%	1%	1%	4%
							grade 4 events	3652	4075	3577	3783	3923	15721
								1%	1%	0%	1%	1%	4%
							grade 5 events	11547	13011	11034	13612	14131	40380
								3%	3%	3%	3%	3%	10%
							grade 6 events	6476	7726	6093	6565	7742	92853
								2%	2%	1%	1%	2%	23%
							grade 7 events	276548	274473	317912	295504	312416	170618
								85%	84%	87%	85%	86%	43%

2.2 Compared Parameters

Parameter	Planned	Actual	Parameter	Planned	Actual
Instrument	ACIS	ACIS	Obspar format version number	7	7
Detector	ACIS-012367	ACIS-012367	Obspar file type	PREDICTED	ACTUAL
Grating	NONE	NONE	Obspar update status	NONE	UPDATED
Data mode	VFAINT	VFAINT	CCD I0 on	Y	Y
Observation mode	POINTING	POINTING	CCD I1 on	Y	Y
[deg] Pointing RA	149.795447	149.7945003630125	CCD I2 on	Y	Y
[deg] Pointing Dec	2.329617	2.357098630715139	CCD I3 on	Y	Y
[deg] Pointing Roll	61.558071	61.76679968836105	CCD S0 on	N	N
[mm] SIM focus pos	-0.782348	-0.7809083437167272	CCD S1 on	N	N
[mm] SIM defocus	0	0.001439871863259334	CCD S2 on	O1	Y
[mm] SIM translation stage pos	-233.592463	-233.5874344608287	CCD S3 on	O2	Y
[mm] SIM translation stage offset	0	-0.005018542100998502	CCD S4 on	N	N
[s] Observation start time (MET)	284148843.184000	284148467.62478	CCD S5 on	N	N
Observation start date	2007-01-02T18:12:58	2007-01-02T18:07:47	Number of optional ACIS chips dropped	0	0
[s] Observation end time (MET)	284195635.184000	284195873.87703	On-chip summing requested	N	N
Observation end date	2007-01-03T07:12:50	2007-01-03T07:17:53	Subarray requested	NONE	NONE
Read mode	TIMED	TIMED	Alternating exposures requested	N	N
			[s] Primary exposure time	0.000000	3.2

2.3 Aspect



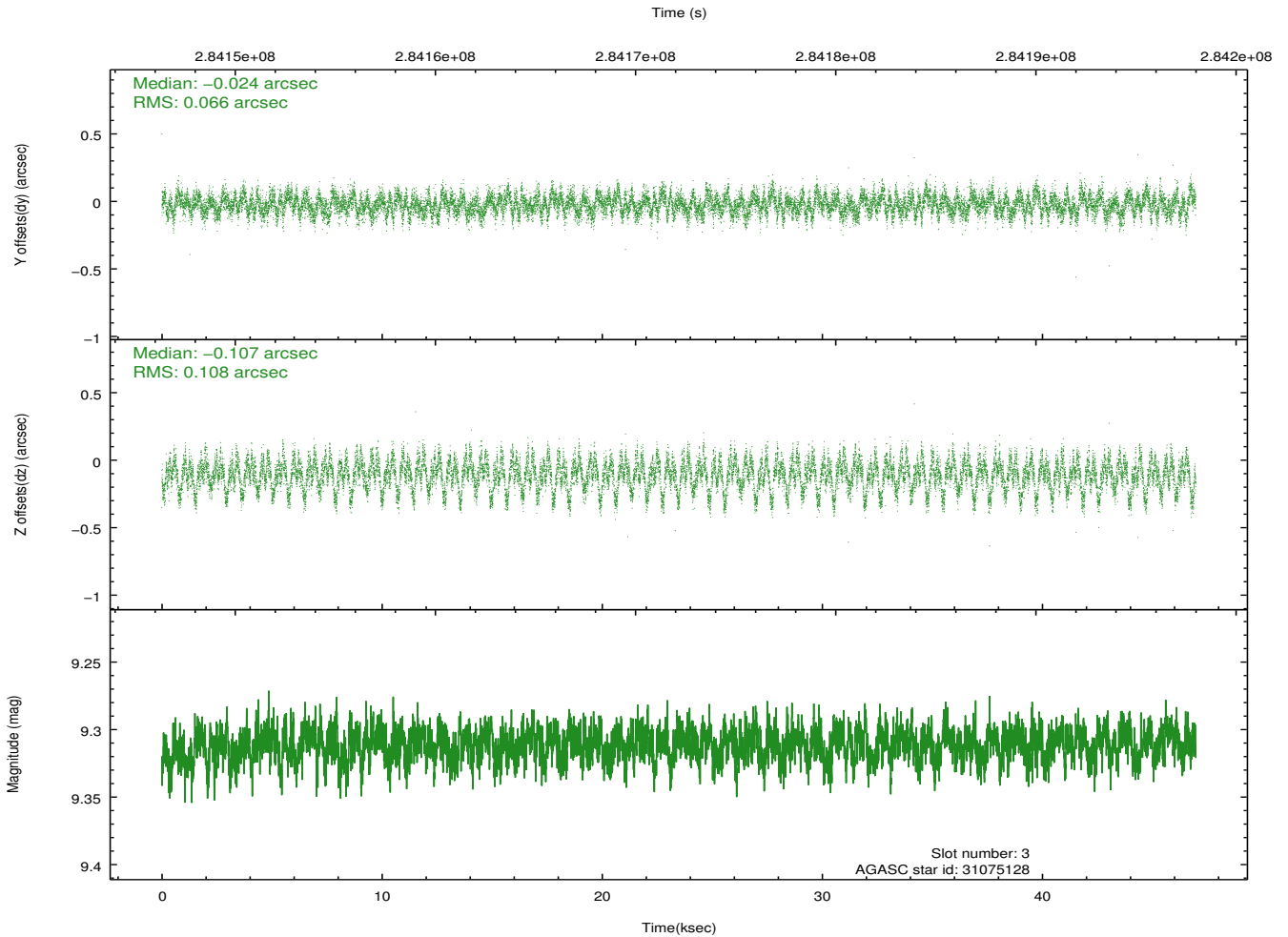
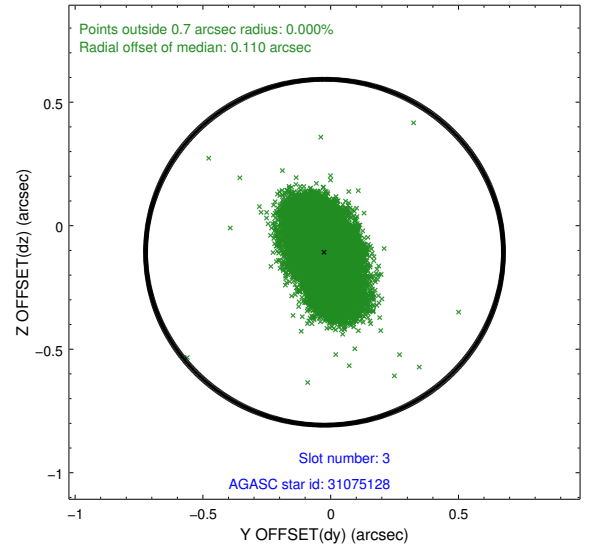
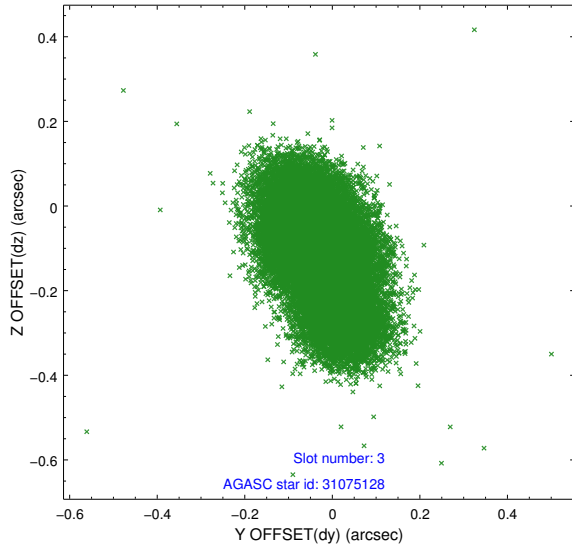


Slot Statistics

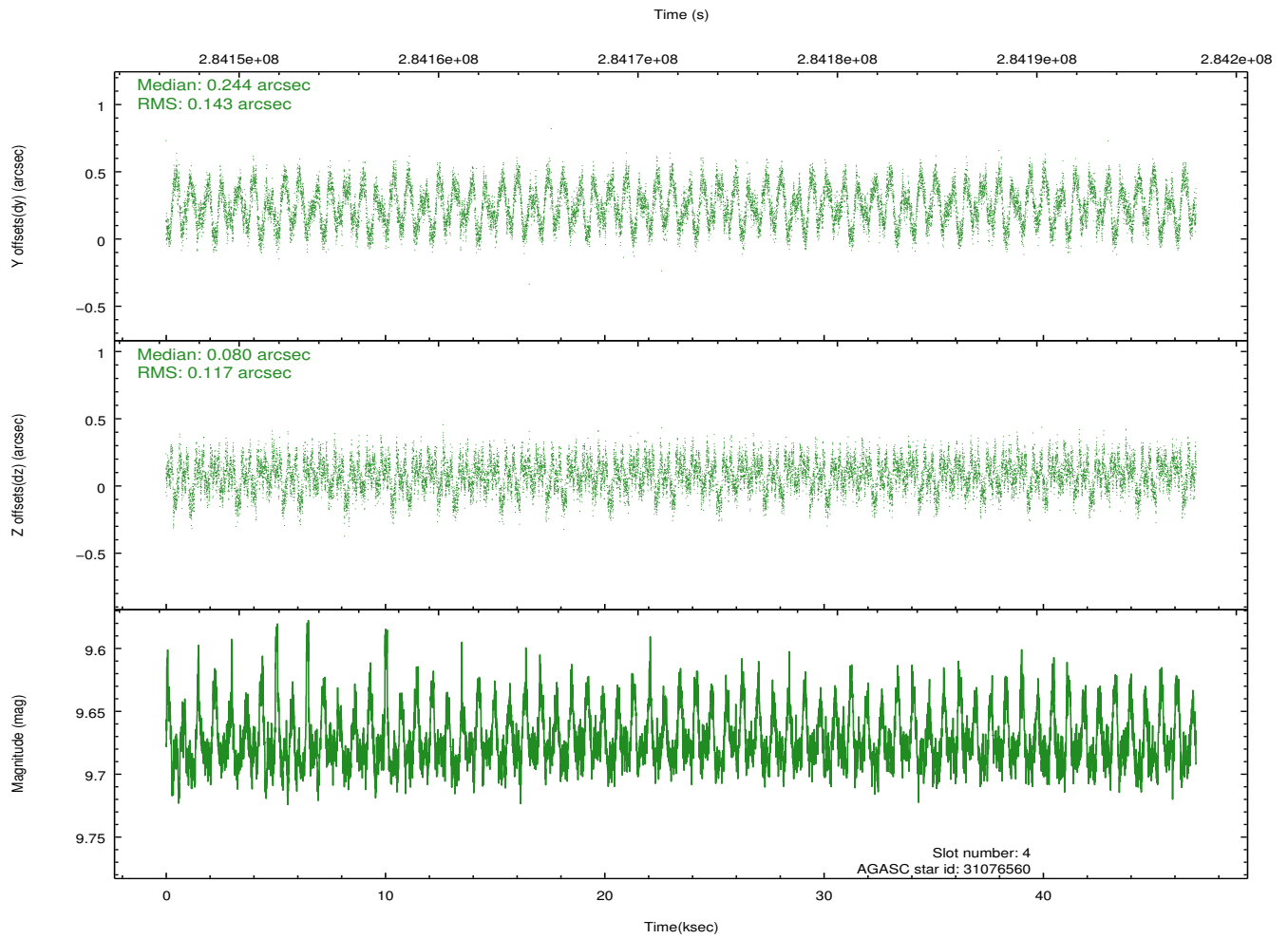
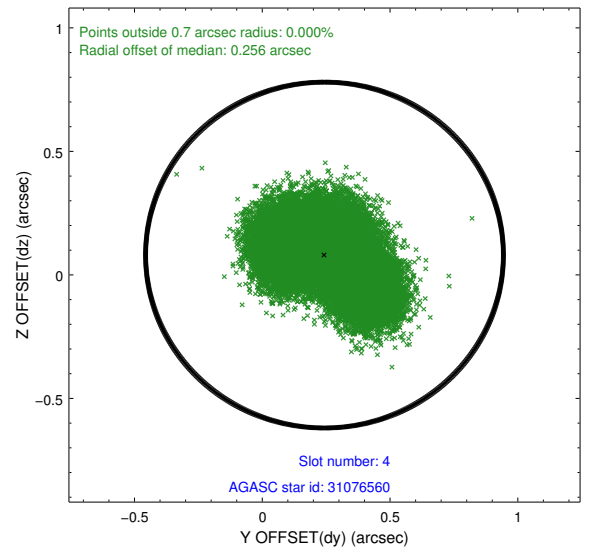
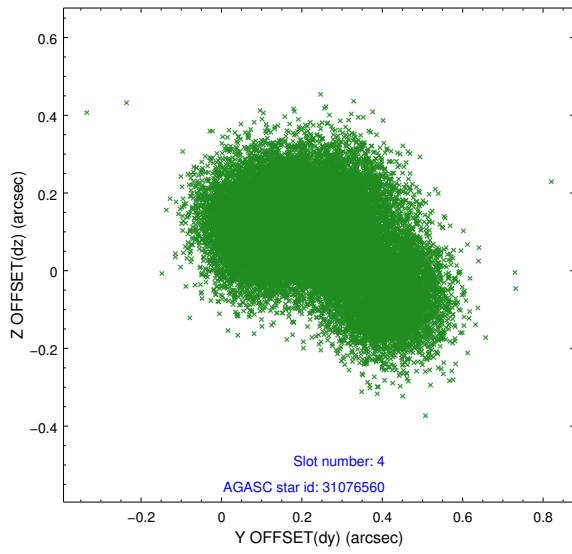
slot	status	id	mag	n_pts	med_dy	med_dz	dr1	dr2	ra	dec	mean_y	mean_z
0	FID	ACIS-I-1	7.24	11457	0.041	-0.023	0.008	0.015	0.000000	0.000000	923.34	-838.58
1	FID	ACIS-I-5	7.23	11456	-0.230	0.037	0.008	0.015	0.000000	0.000000	-1825.04	1058.97
2	FID	ACIS-I-6	7.25	11456	0.099	0.056	0.007	0.012	0.000000	0.000000	388.96	1703.48
3	GUIDE	31075128	9.31	22890	-0.024	-0.107	0.134	0.225	149.584516	2.364347	-251.08	726.69
4	GUIDE	31076560	9.68	22883	0.244	0.080	0.203	0.304	149.884782	2.009277	-860.44	-831.95
5	GUIDE	31463496	9.48	22899	-0.099	-0.134	0.146	0.231	149.845020	2.964001	2093.17	931.19
6	GUIDE	31983336	8.61	22845	-0.029	0.220	0.082	0.132	150.429924	2.291234	966.61	-2071.89
7	GUIDE	32375384	9.97	22879	-0.074	-0.048	0.206	0.320	150.238117	2.622063	1684.51	-897.81

2.4 Star Slots

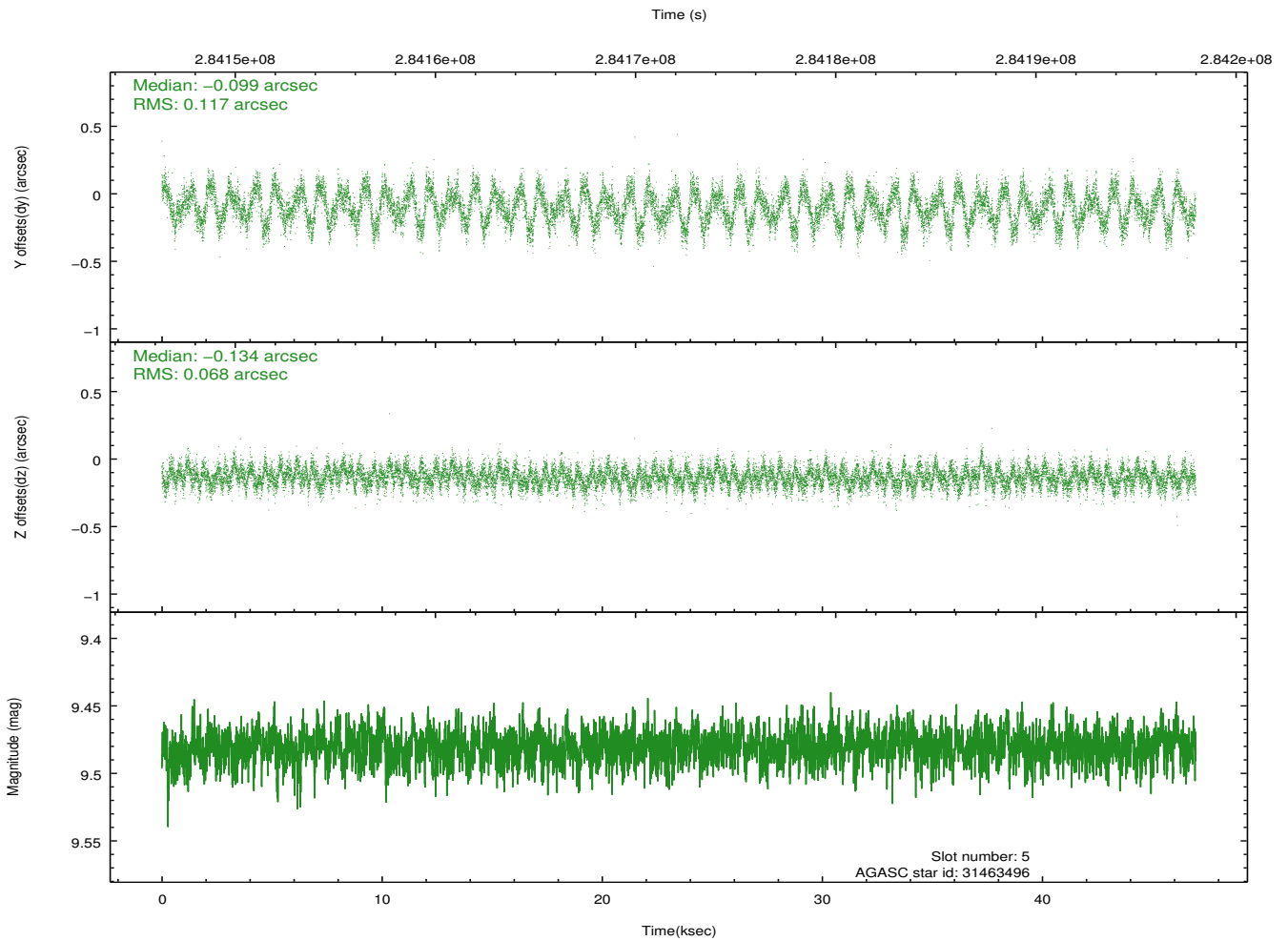
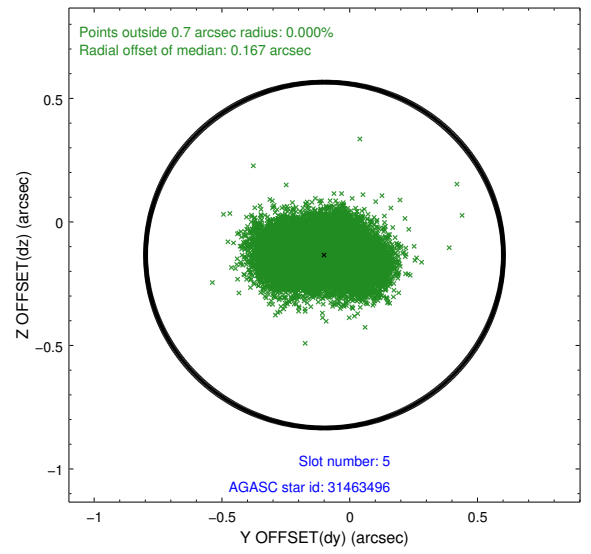
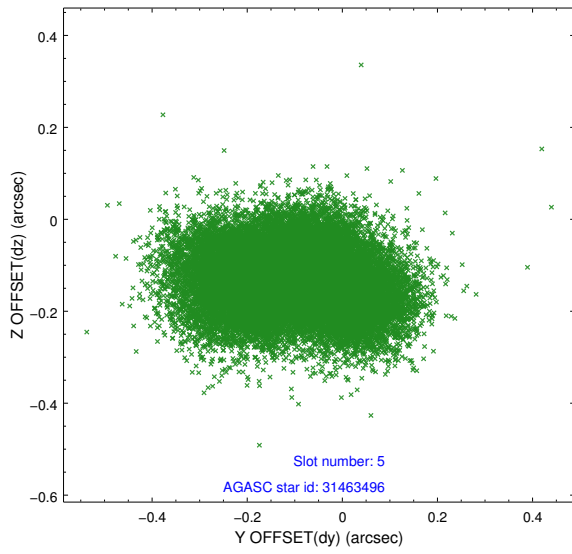
2.4.1 Slot 3



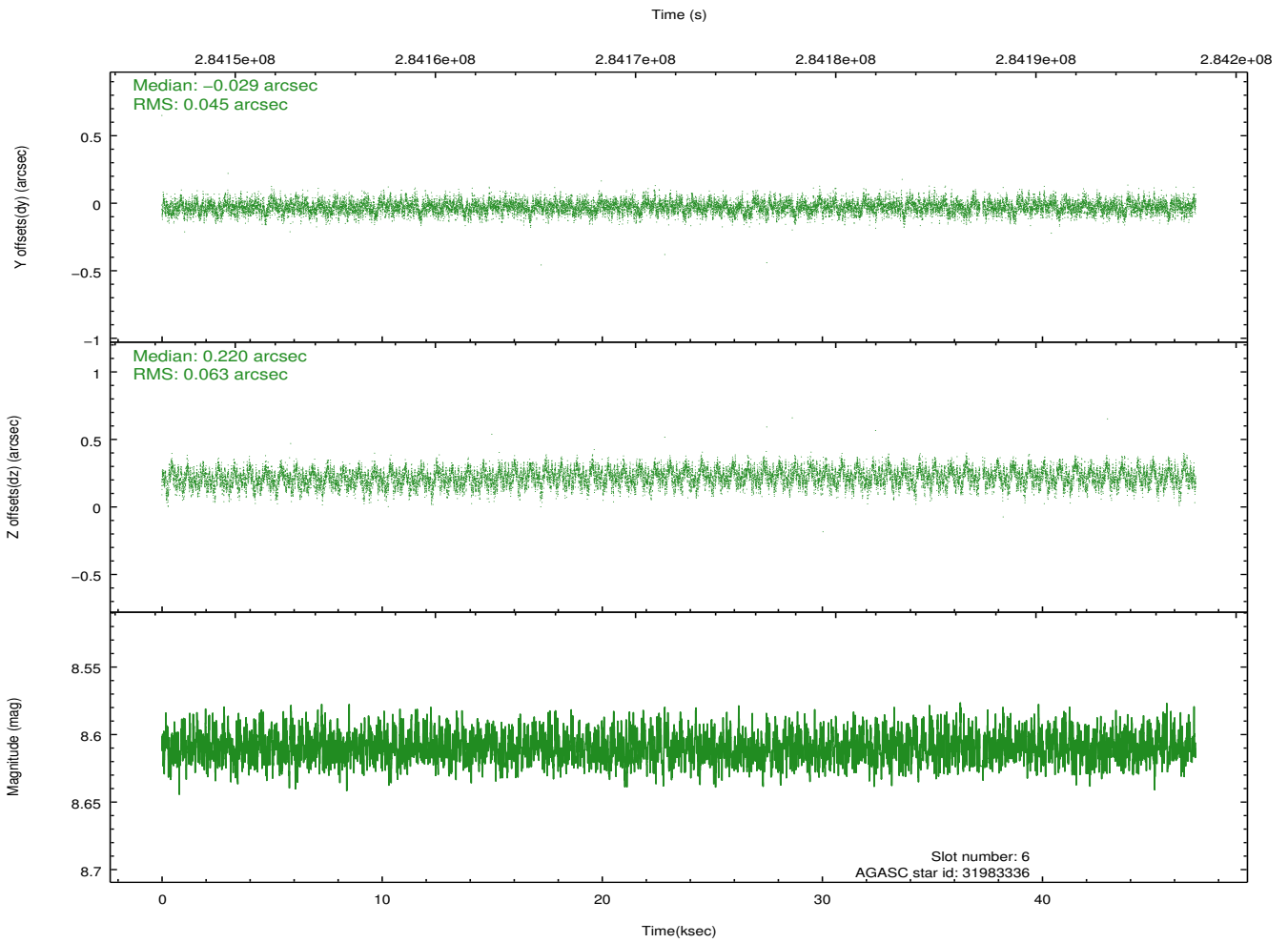
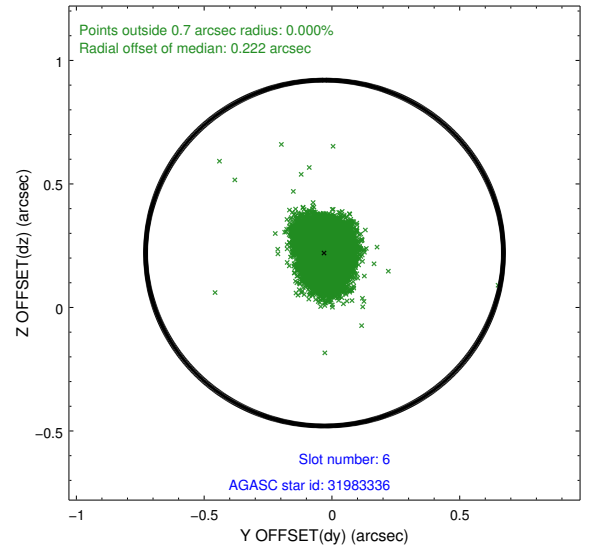
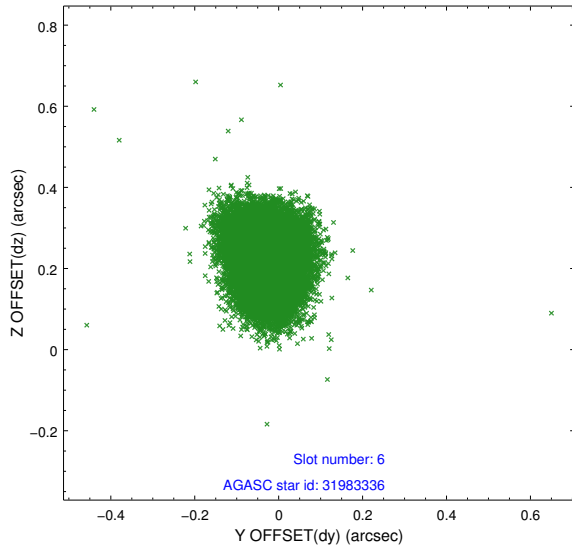
2.4.2 Slot 4



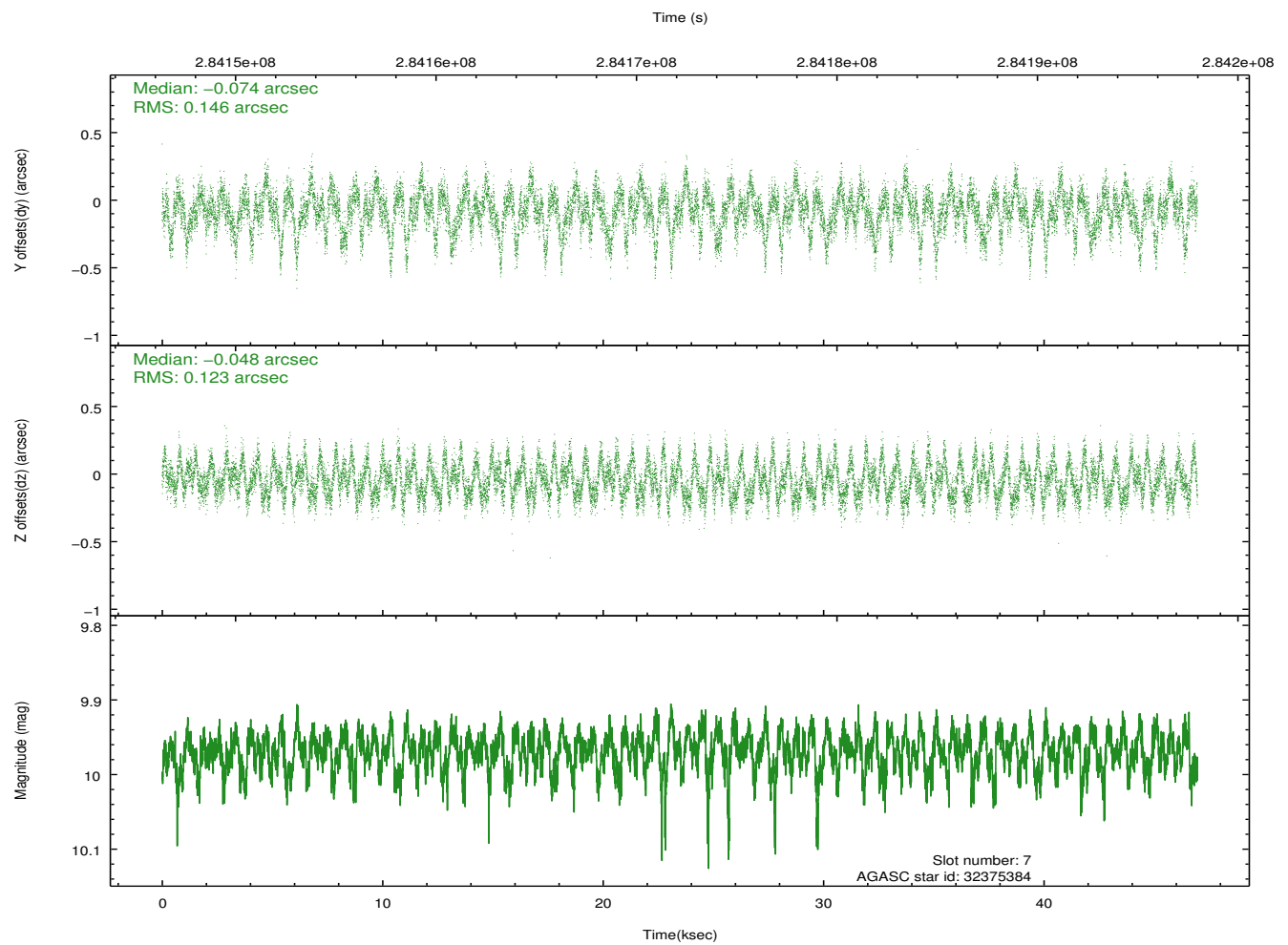
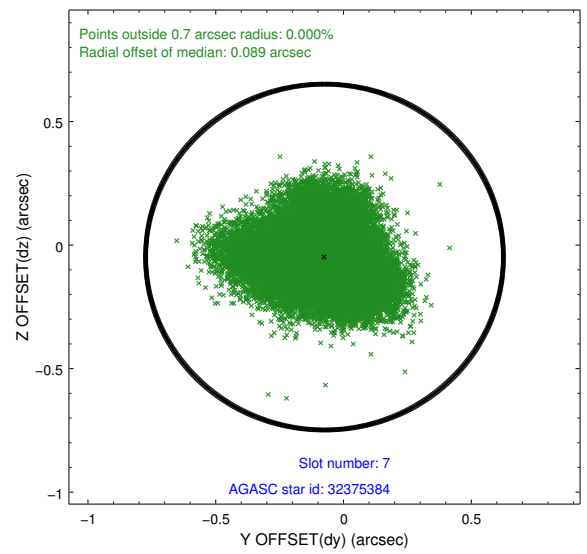
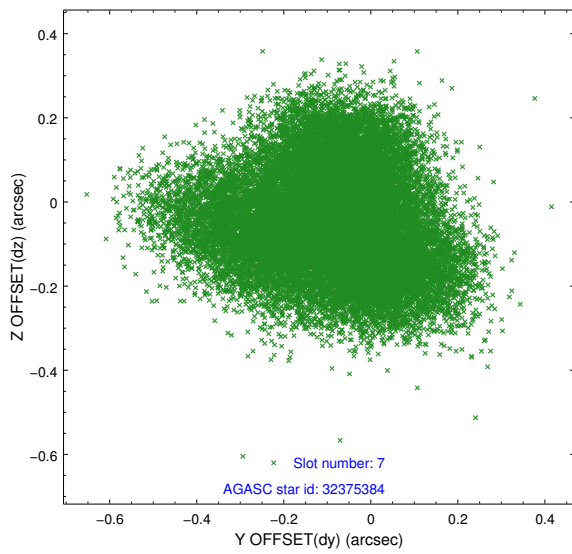
2.4.3 Slot 5



2.4.4 Slot 6

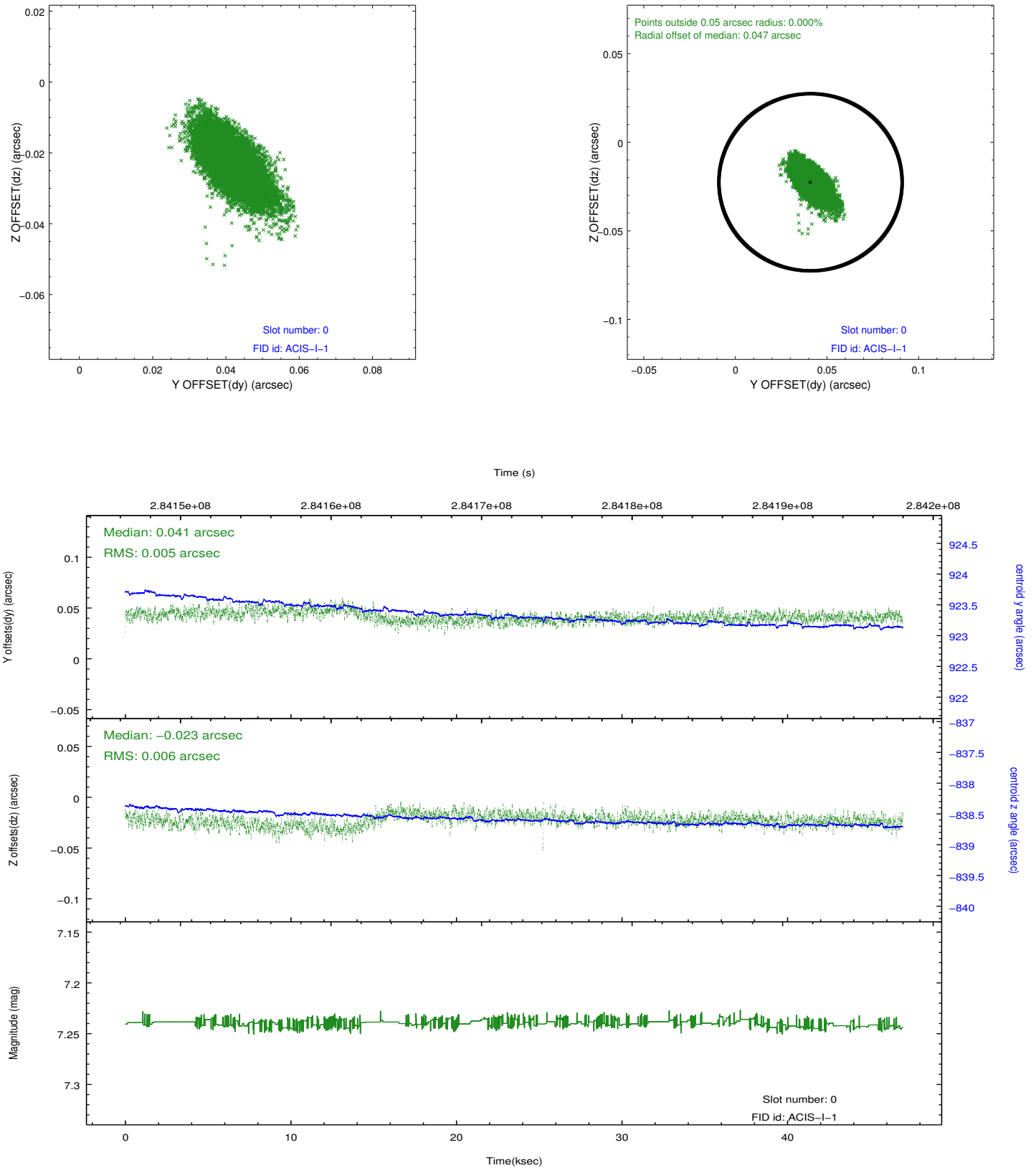


2.4.5 Slot 7

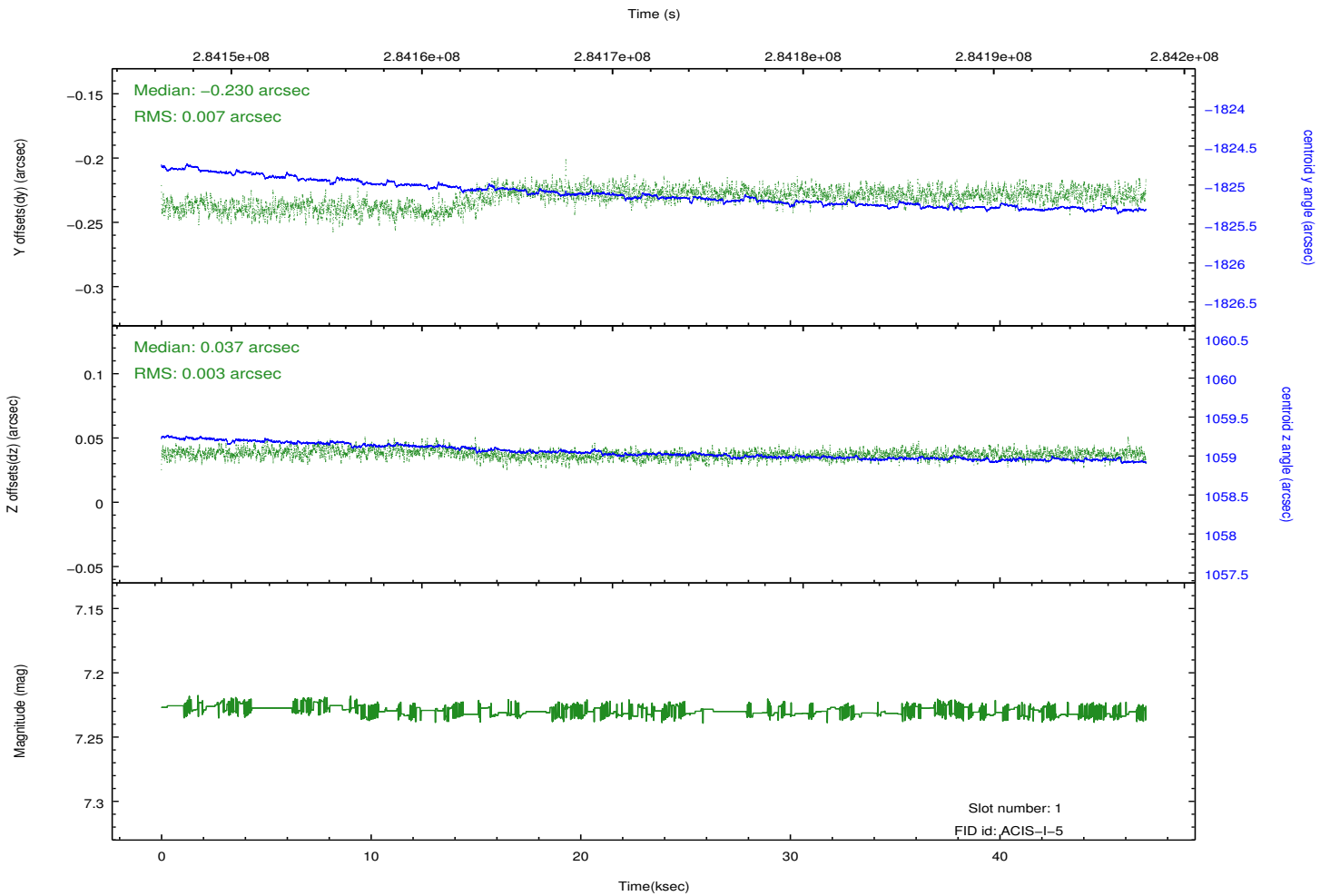
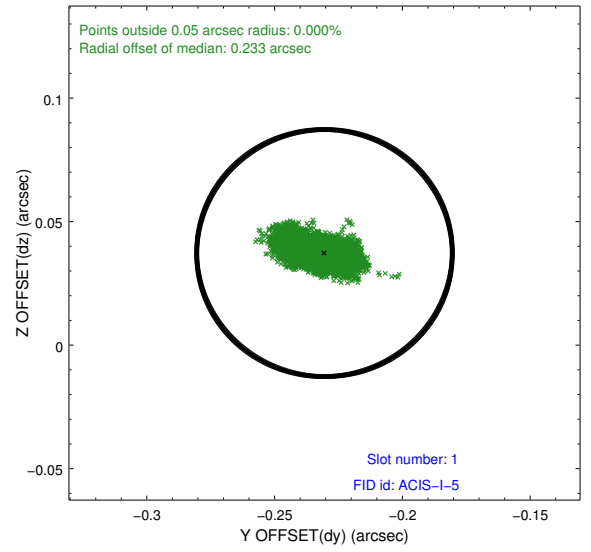
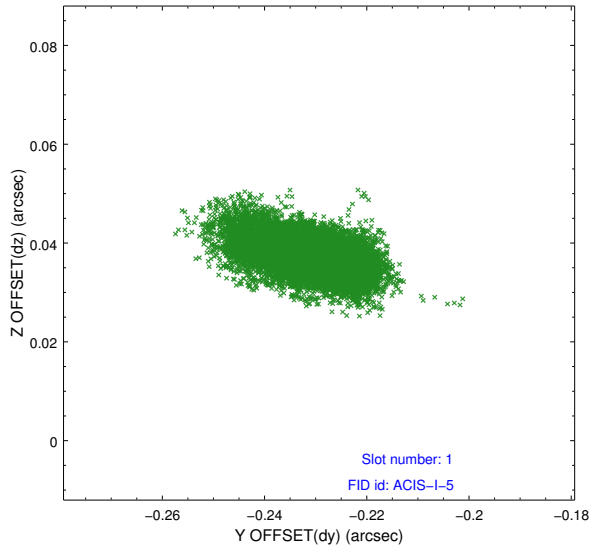


2.5 FID Slots

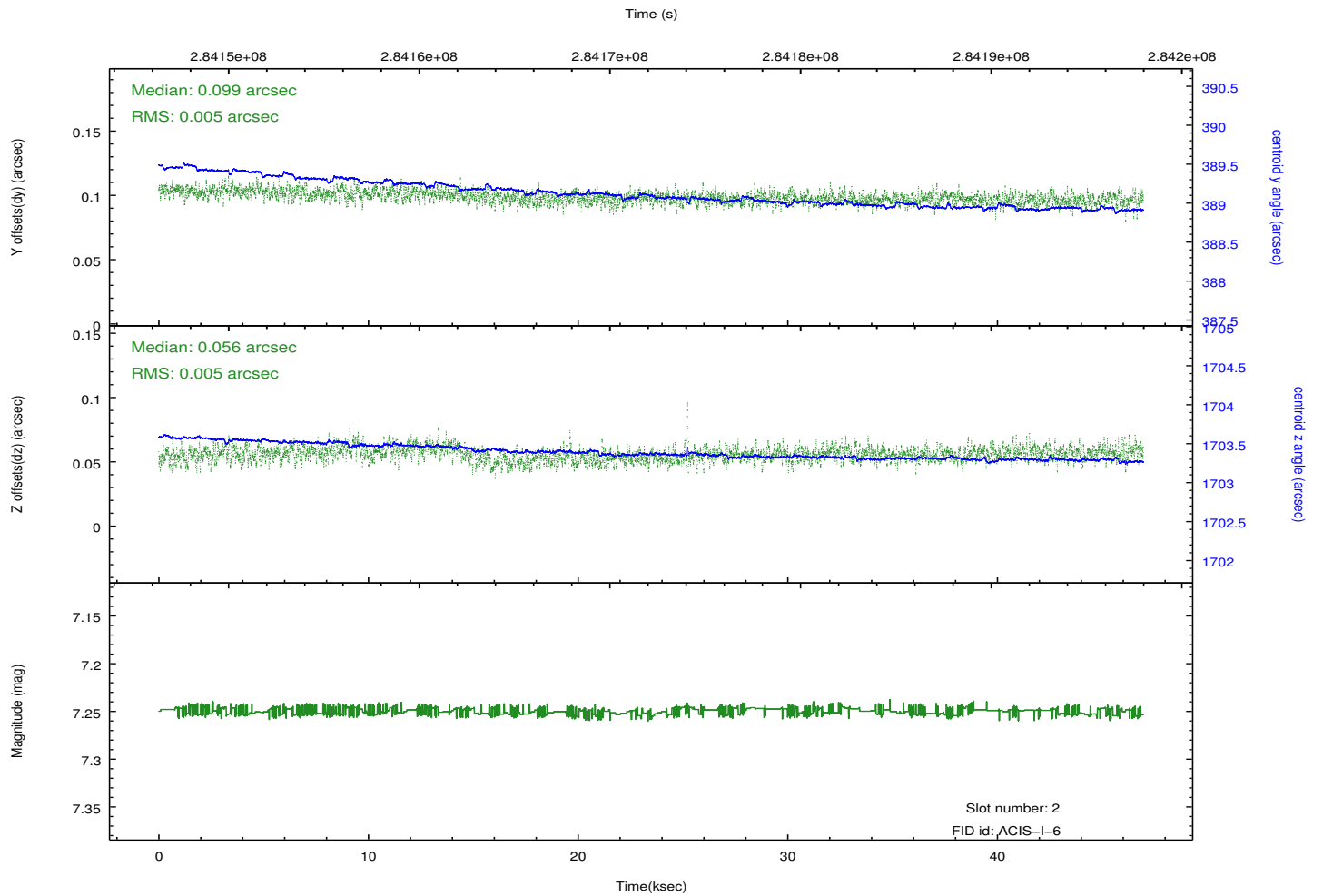
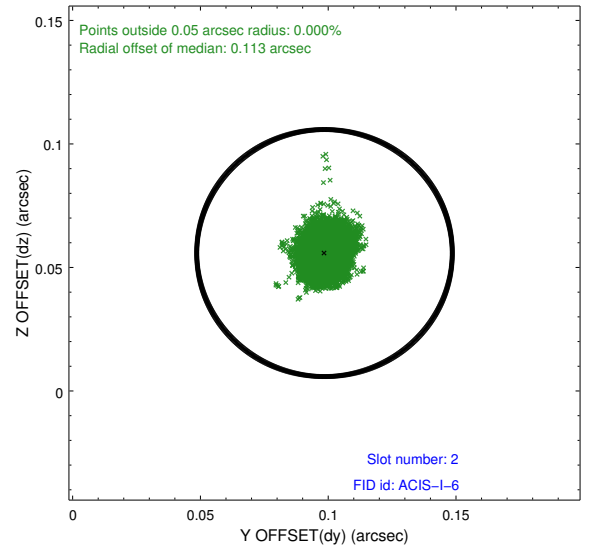
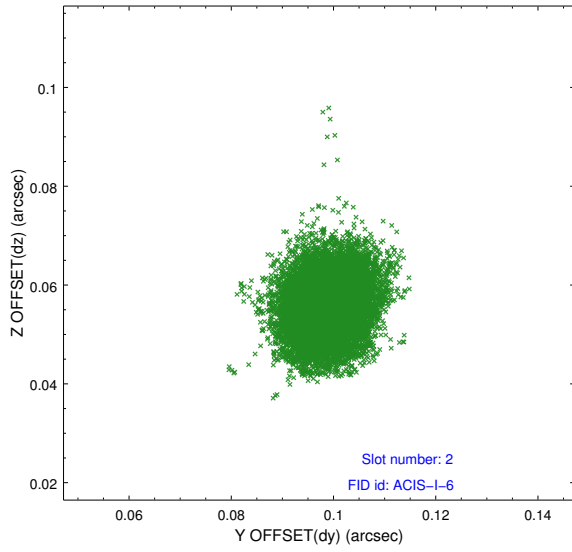
2.5.1 Slot 0



2.5.2 Slot 1



2.5.3 Slot 2



A Summary

A.1 Status

V&V Scientist	Jen Lauer
V&V Date (YYYY-MM-DD)	2012.04.19
V&V Edition	1
V&V Disposition and Status	OK
V&V Charge Time	46.5279588

A.2 Comments

Roll preference met.