

V&V Reference Report

L2 ASCDS Version : 8.4.4

Observation 8179 - L2 Version 3
Chandra X-Ray Center

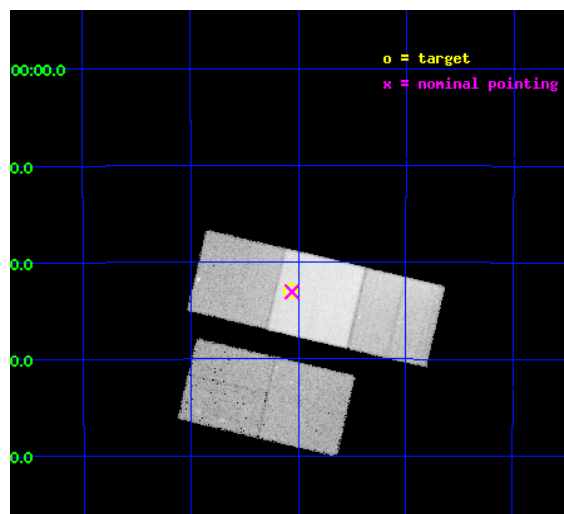
L2 Processing Date : Apr 22 2012

Contents

1	Front	2
2	OBI	3
2.1	OBI	3
2.1.1	Images	3
2.1.2	Bias	3
2.1.3	Parameters	4
2.1.4	Events	4
2.2	Compared Parameters	5
2.3	Aspect	6
2.4	Star Slots	9
2.4.1	Slot 3	9
2.4.2	Slot 4	10
2.4.3	Slot 5	11
2.4.4	Slot 6	12
2.4.5	Slot 7	13
2.5	FID Slots	14
2.5.1	Slot 0	14
2.5.2	Slot 1	15
2.5.3	Slot 2	16
A	Summary	17
A.1	Status	17
A.2	Comments	17

1 Front

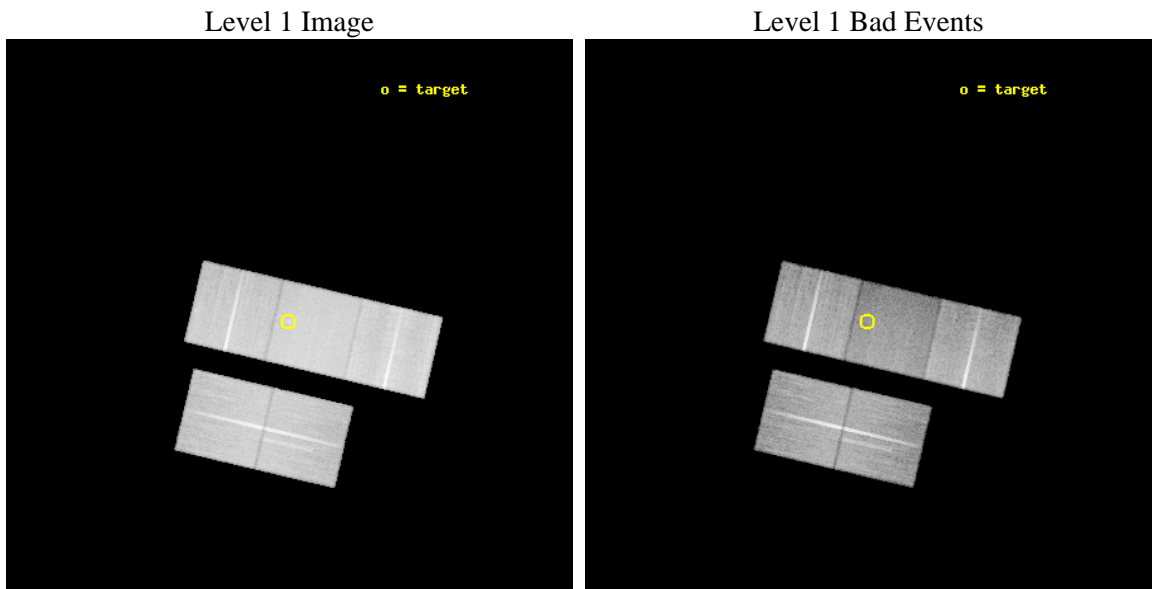
seq_num	600616	Sequence number
obs_id	8179	Observation id
title	X-ray thermal coronae of early-type galaxies in hot clusters	Propo
observer	Dr. Ming Sun	Principal investigator
object	NGC 4709	Source name
dtcycle	0	
cycle	P	events from which exps? Prim/Second/Both
ra_targ	192.51625	Observer's specified target RA [deg]
dec_targ	-41.3825	Observer's specified target Dec [deg]
ra_nom	192.51486618675	Nominal RA [deg]
dec_nom	-41.384380439122	Nominal Dec [deg]
roll_nom	13.193181222515	Nominal Roll [deg]
revision	3	Processing version of data
ontime	30184.700232148	Sum of GTIs [s]
livetime	29790.314901962	Livetime [s]
ontime2	30181.559341311	Sum of GTIs [s]
ontime3	30181.559261799	Sum of GTIs [s]
ontime6	30175.277261138	Sum of GTIs [s]
ontime7	30184.700232148	Sum of GTIs [s]
ontime8	30172.136290848	Sum of GTIs [s]
l2events	317397	Number of level 2 events



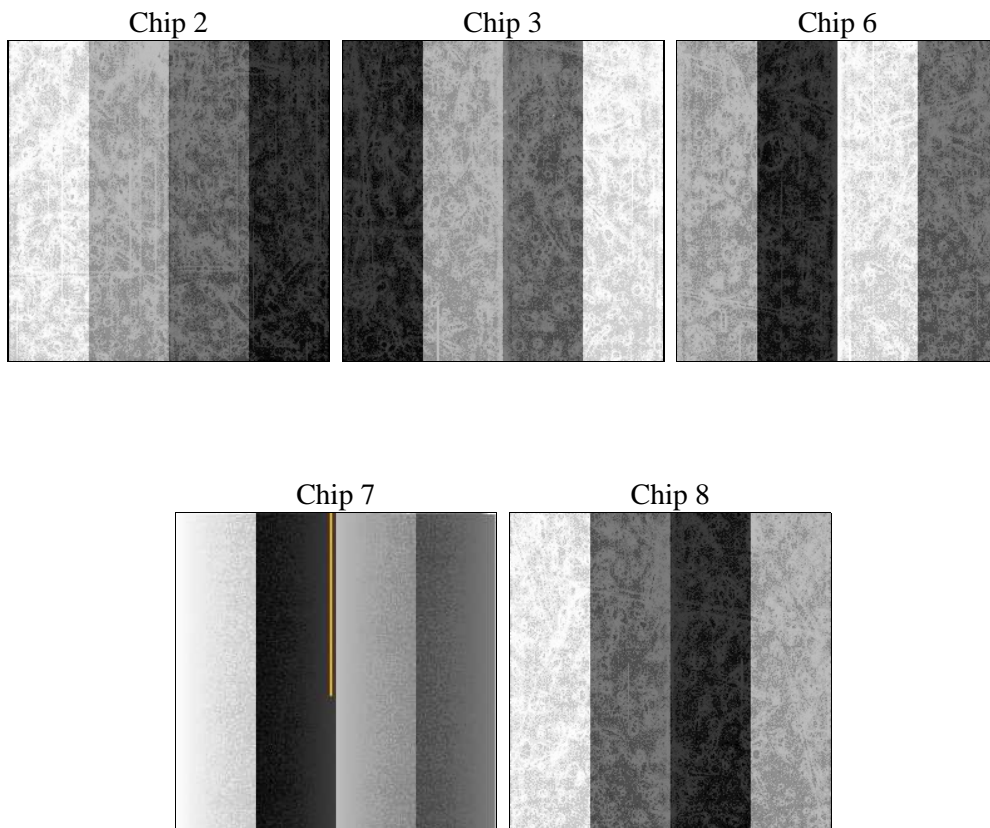
2 OBI

2.1 OBI

2.1.1 Images



2.1.2 Bias



2.1.3 Parameters

obi_num	0	Obi number	sched_exp_time	30000.000000	[s] Scheduled observation exposure time
ascdsver	8.4.4	Processing system revision	ontime	30184.700232148	Sum of GTIs [s]
caldbver	4.4.9	 	ontime2	30181.559341311	Sum of GTIs [s]
date	2012-04-22T05:11:52	Date and time of file creation	ontime3	30181.559261799	Sum of GTIs [s]
revision	3	Processing version of data	ontime6	30175.277261138	Sum of GTIs [s]
			ontime7	30184.700232148	Sum of GTIs [s]
			ontime8	30172.136290848	Sum of GTIs [s]
			l1events	1421022	Number of level 1 events

2.1.4 Events

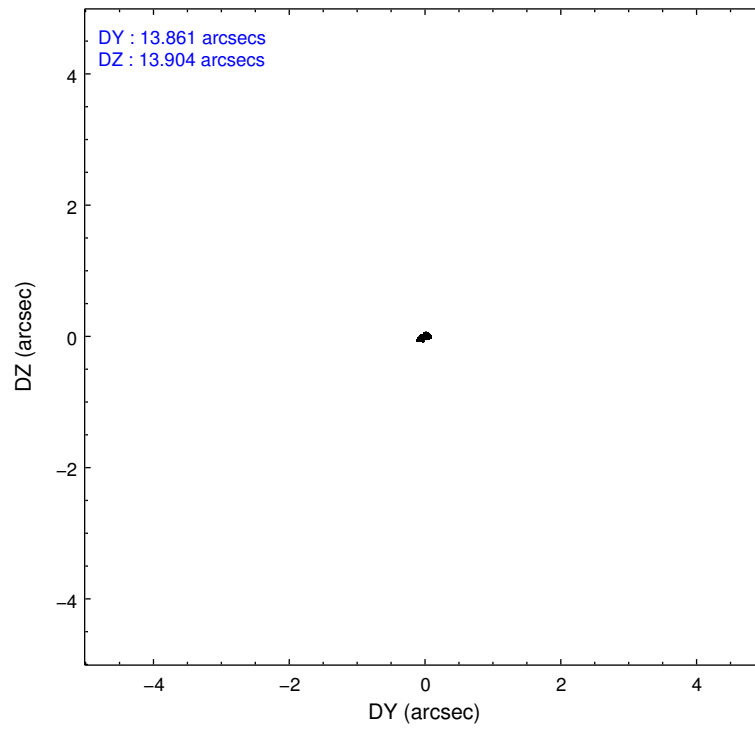
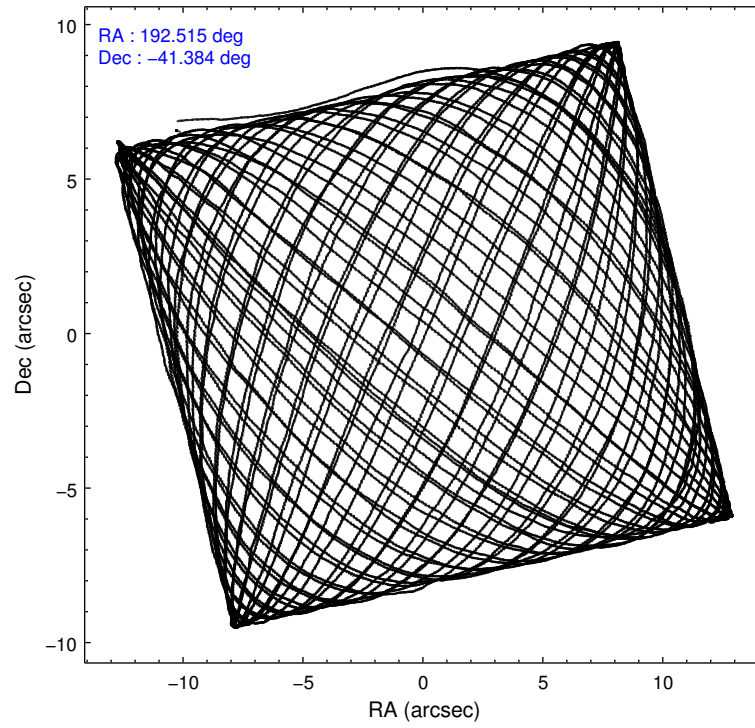
	ccd 2	ccd 3	ccd 6	ccd 7	ccd 8
level 1 events	255480	241508	263211	317768	343055
rejected events	226260	210963	222133	148683	232051
rejected %	88%	87%	84%	46%	67%

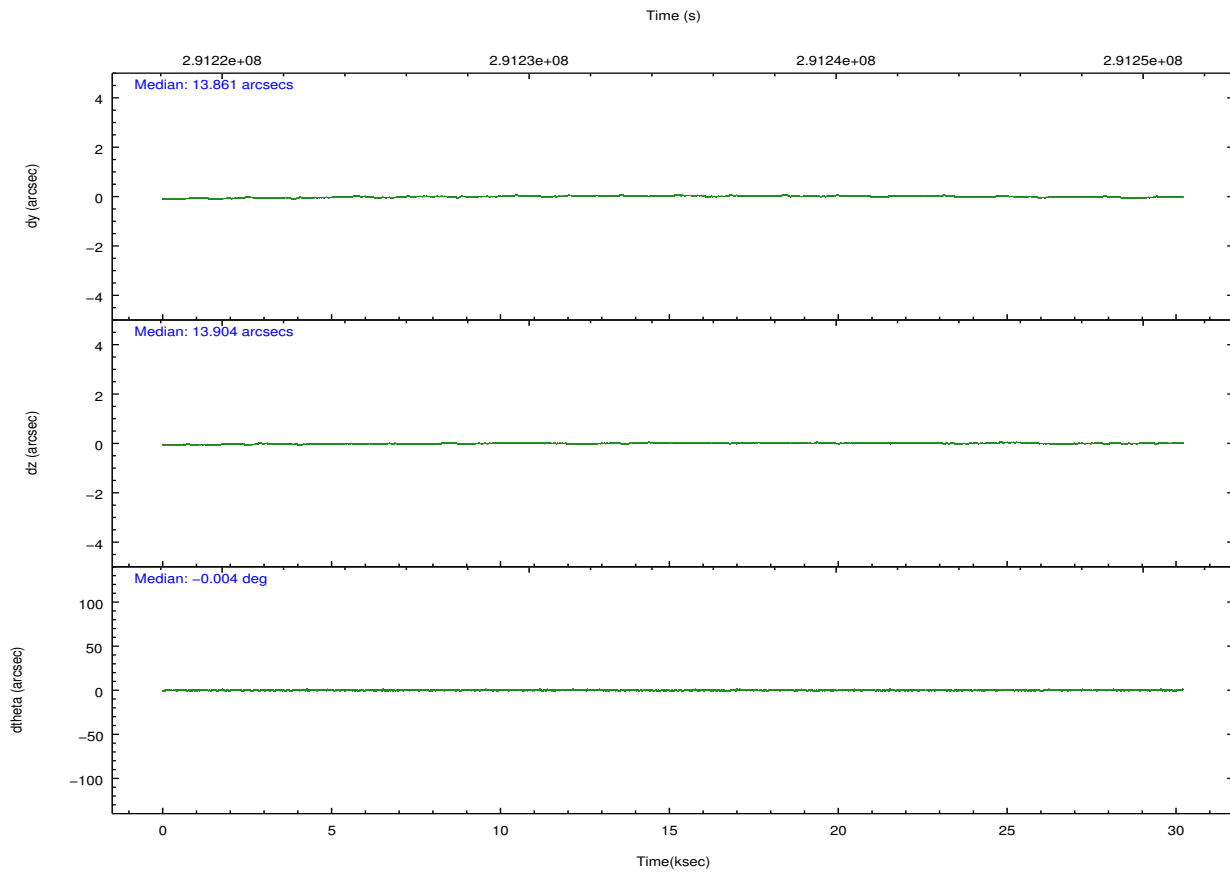
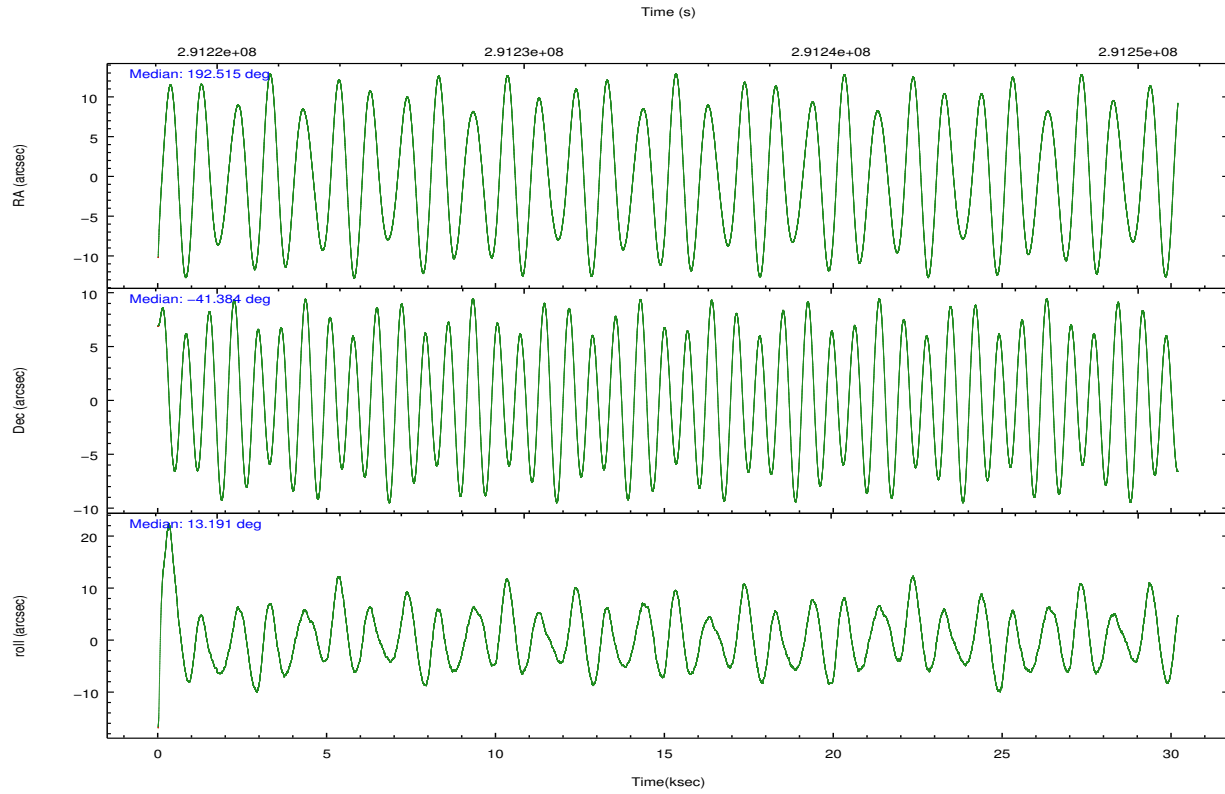
	ccd 2	ccd 3	ccd 6	ccd 7	ccd 8
grade 0 events	13985	15204	22364	25619	55390
	5%	6%	8%	8%	16%
grade 1 events	175	166	189	377	399
	0%	0%	0%	0%	0%
grade 2 events	5897	5670	7089	37800	20136
	2%	2%	2%	11%	5%
grade 3 events	2673	2835	3243	17028	8596
	1%	1%	1%	5%	2%
grade 4 events	2695	2683	3192	16991	8196
	1%	1%	1%	5%	2%
grade 5 events	7760	9499	9619	28590	14087
	3%	3%	3%	8%	4%
grade 6 events	4404	4587	5766	74104	20087
	1%	1%	2%	23%	5%
grade 7 events	217891	200864	211749	117259	216164
	85%	83%	80%	36%	63%

2.2 Compared Parameters

Parameter	Planned	Actual	Parameter	Planned	Actual
Instrument	ACIS	ACIS	Obspar format version number	7	7
Detector	ACIS-23678	ACIS-23678	Obspar file type	PREDICTED	ACTUAL
Grating	NONE	NONE	Obspar update status	NONE	UPDATED
Data mode	VFAINT	VFAINT	CCD I0 on	N	N
Observation mode	POINTING	POINTING	CCD I1 on	N	N
[deg] Pointing RA	192.488633	192.5148661867451	CCD I2 on	O2	Y
[deg] Pointing Dec	-41.403373	-41.38438043912176	CCD I3 on	O3	Y
[deg] Pointing Roll	13.019213	13.19318122251488	CCD S0 on	N	N
[mm] SIM focus pos	-0.684267	-0.6828225247311905	CCD S1 on	N	N
[mm] SIM defocus	0	0.001444936568705701	CCD S2 on	Y	Y
[mm] SIM translation stage pos	-190.132523	-190.1400660498719	CCD S3 on	Y	Y
[mm] SIM translation stage offset	0	0.00754346686406393	CCD S4 on	O1	Y
[s] Observation start time (MET)	291219788.184000	291218515.13548	CCD S5 on	N	N
Observation start date	2007-03-25T14:22:03	2007-03-25T14:01:55	Number of optional ACIS chips dropped	0	0
[s] Observation end time (MET)	291249788.184000	291250567.91201	On-chip summing requested	N	N
Observation end date	2007-03-25T22:42:03	2007-03-25T22:56:07	Subarray requested	NONE	NONE
Read mode	TIMED	TIMED	Alternating exposures requested	N	N
			[s] Primary exposure time	0.000000	3.1

2.3 Aspect



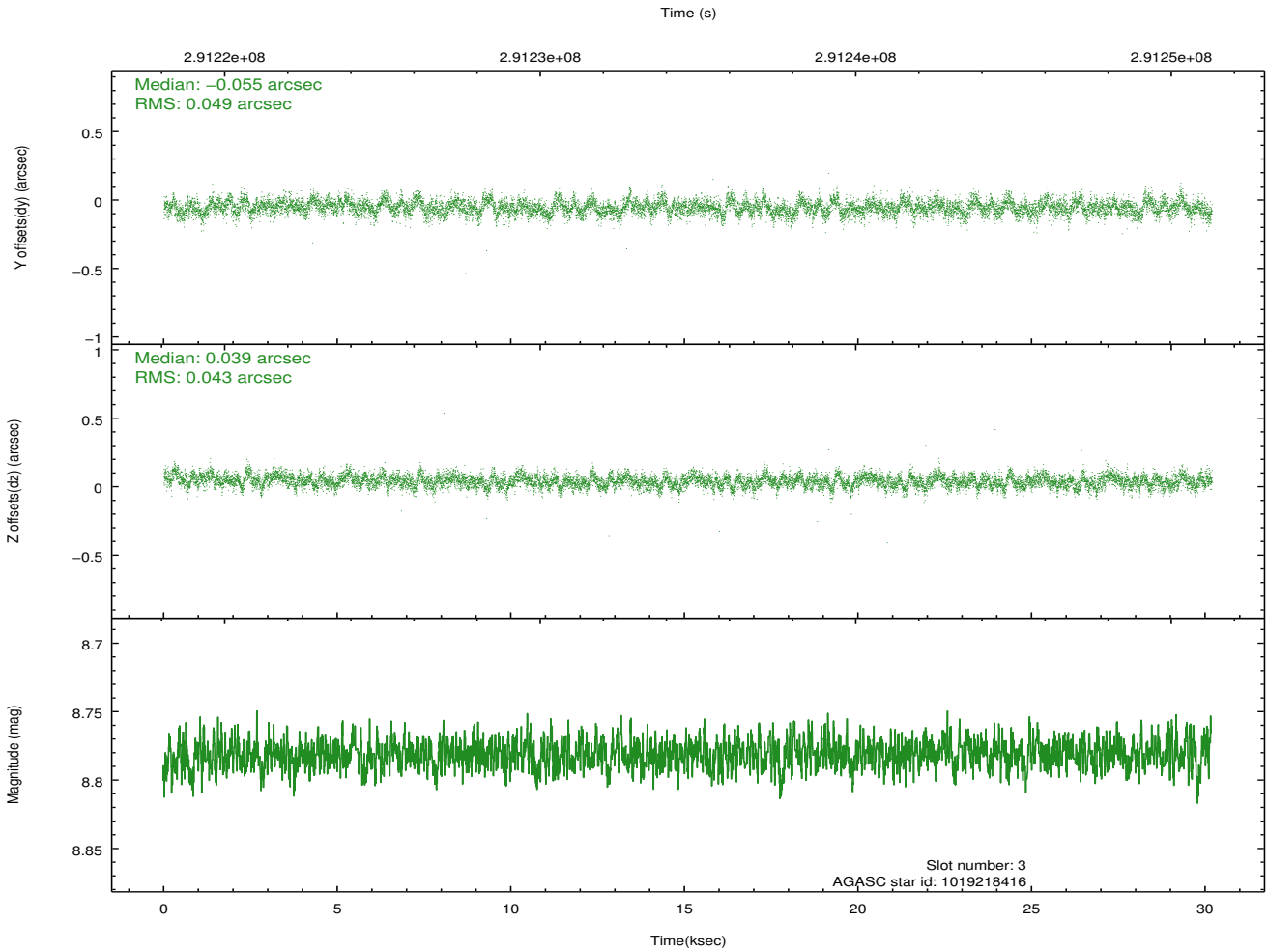
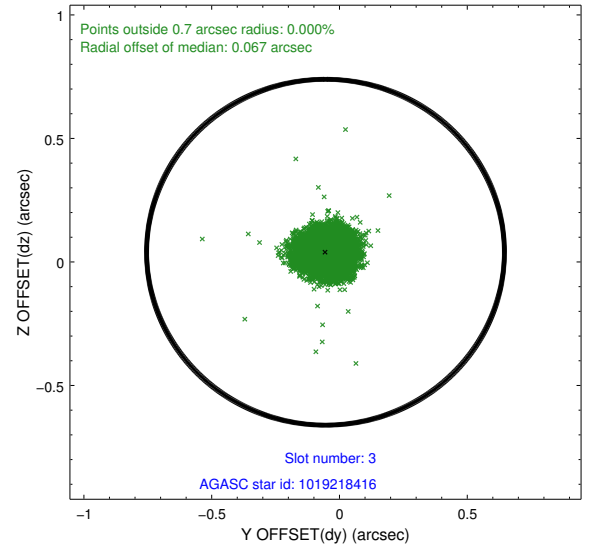
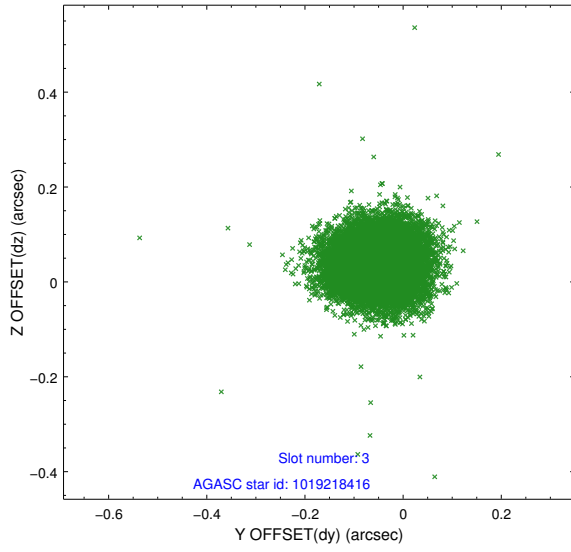


Slot Statistics

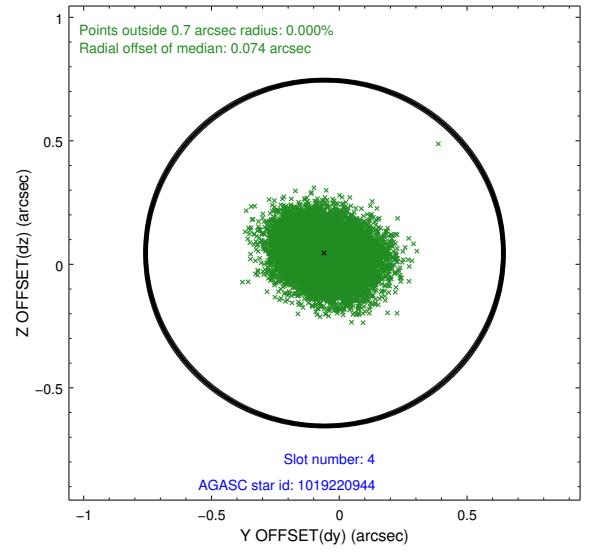
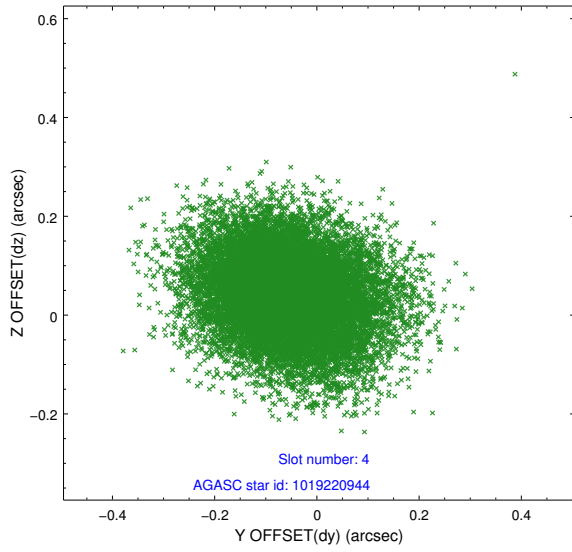
slot	status	id	mag	n_pts	med_dy	med_dz	dr1	dr2	ra	dec	mean_y	mean_z
0	FID	ACIS-S-2	7.10	7364	-0.055	-0.061	0.009	0.017	0.000000	0.000000	-766.85	-1735.31
1	FID	ACIS-S-4	7.20	7364	0.194	0.043	0.009	0.020	0.000000	0.000000	2146.65	173.20
2	FID	ACIS-S-5	7.23	7364	-0.171	0.027	0.010	0.021	0.000000	0.000000	-1819.72	166.94
3	GUIDE	1019218416	8.78	14714	-0.055	0.039	0.068	0.112	193.142850	-40.941016	2106.93	1214.42
4	GUIDE	1019220944	9.87	14714	-0.058	0.046	0.128	0.212	192.806424	-41.071482	1109.38	968.28
5	GUIDE	1019221952	9.59	14717	0.022	-0.126	0.088	0.142	192.906873	-41.032646	1407.00	1041.77
6	GUIDE	1019740808	8.80	14717	0.054	-0.100	0.088	0.143	192.766173	-41.251253	855.27	363.14
7	GUIDE	1019743536	8.64	14715	0.032	0.141	0.075	0.122	192.632057	-41.696442	138.32	-1115.11

2.4 Star Slots

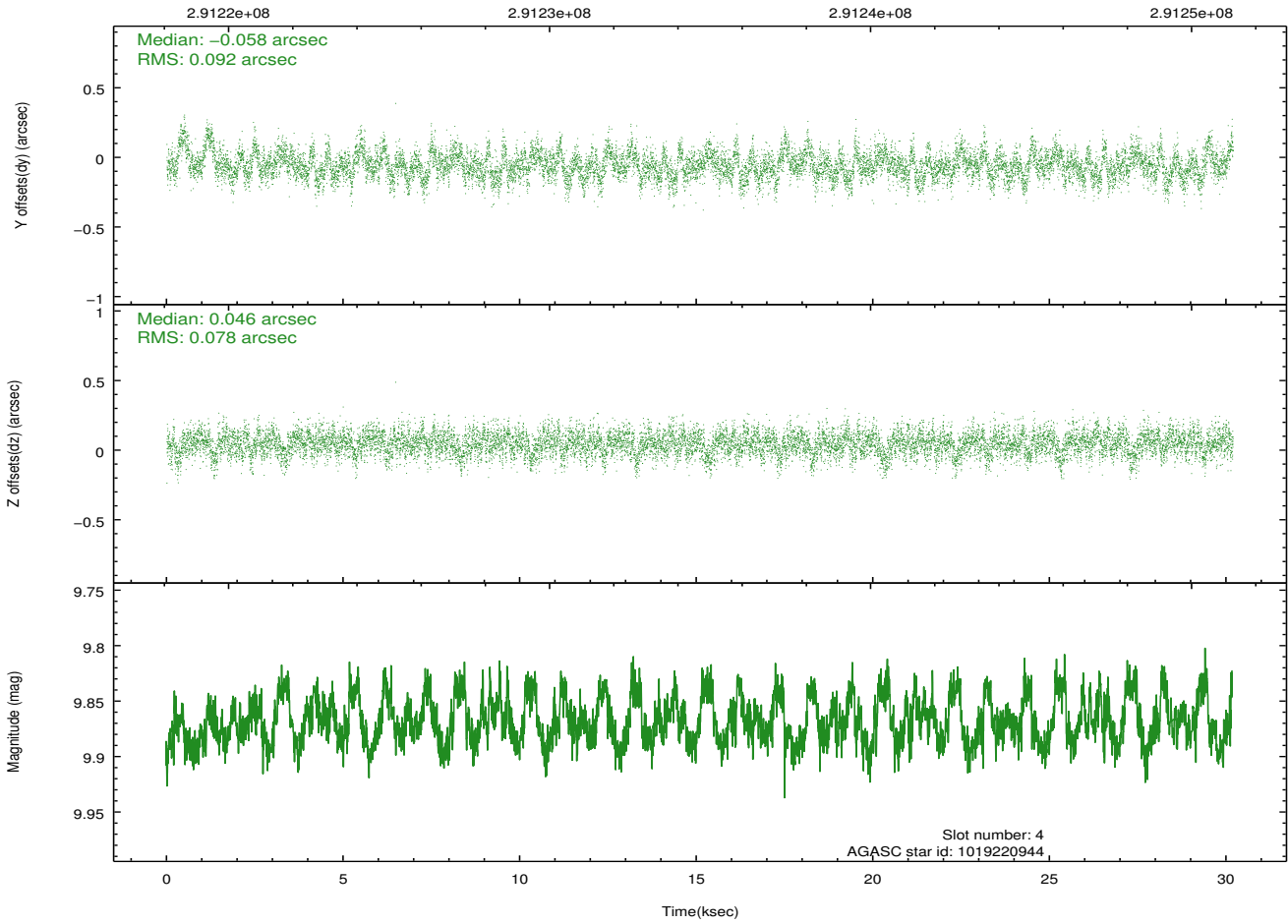
2.4.1 Slot 3



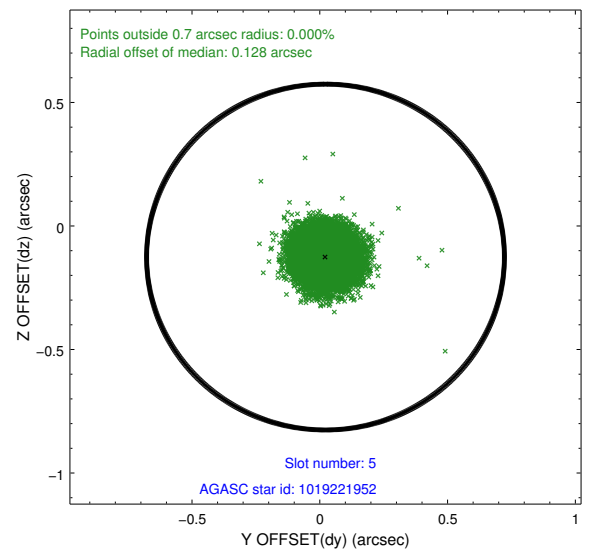
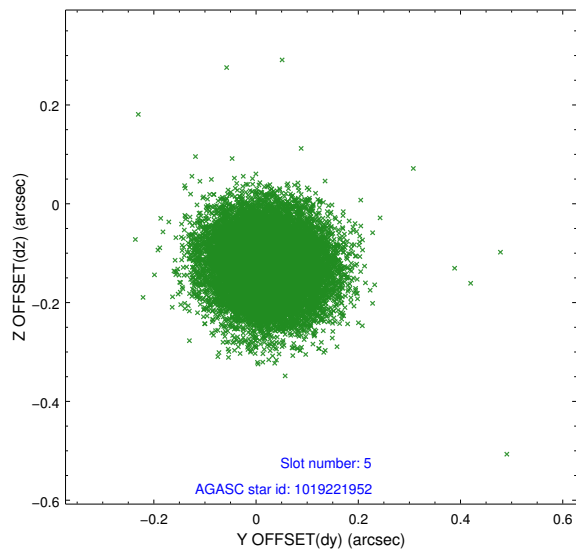
2.4.2 Slot 4



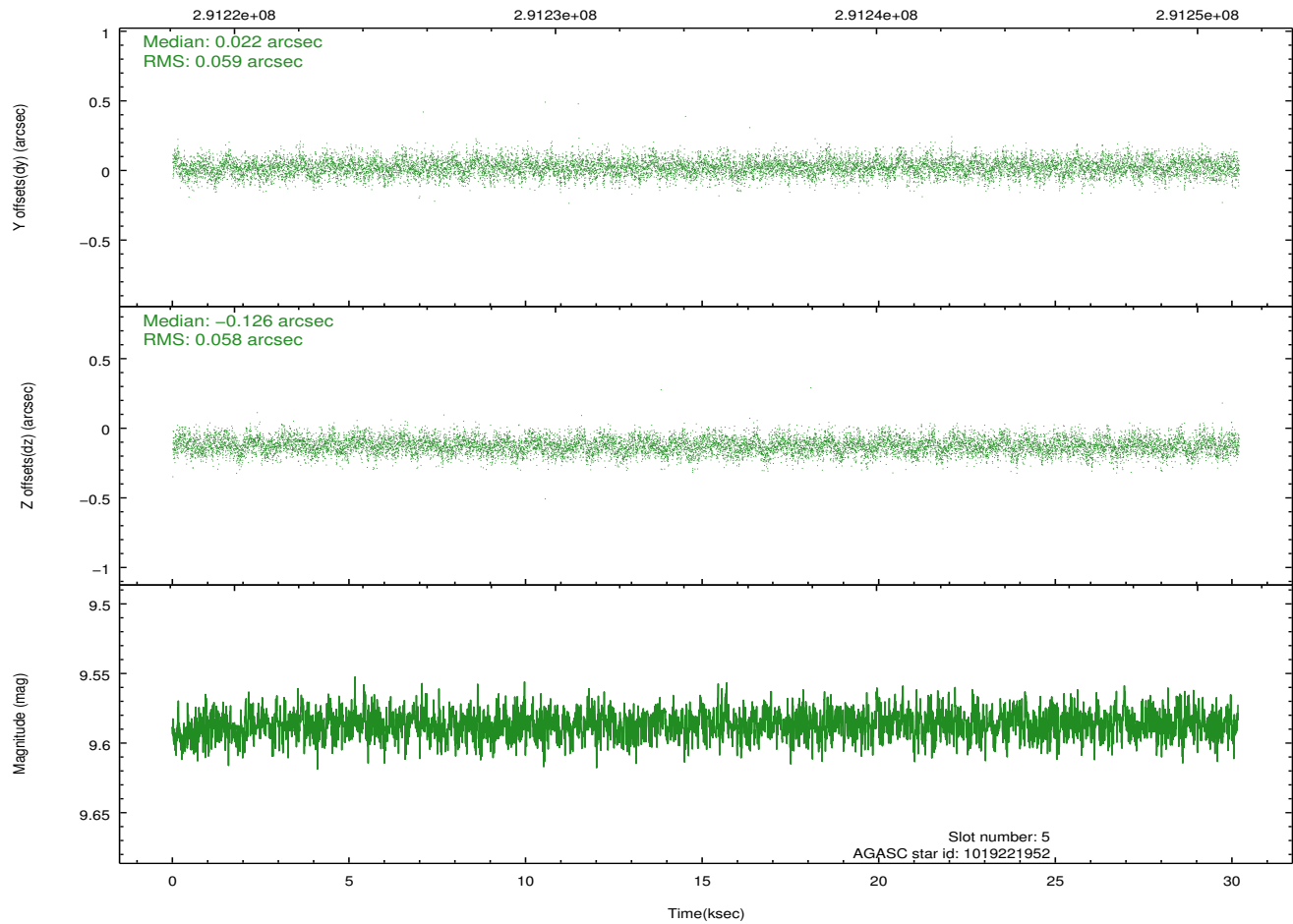
Time (s)



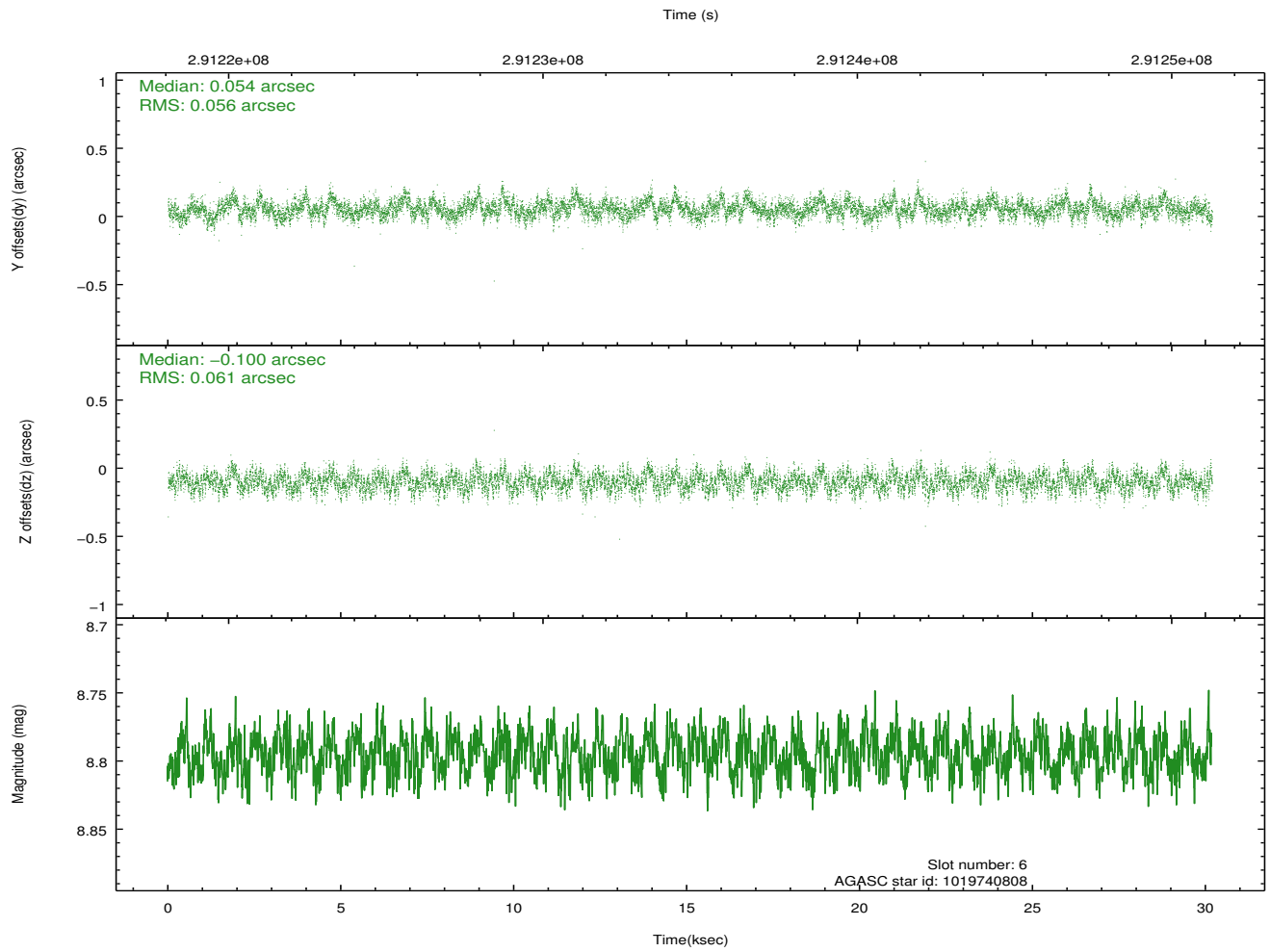
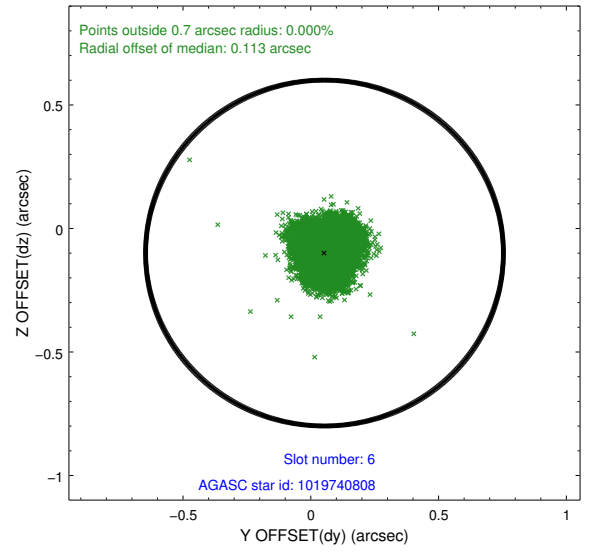
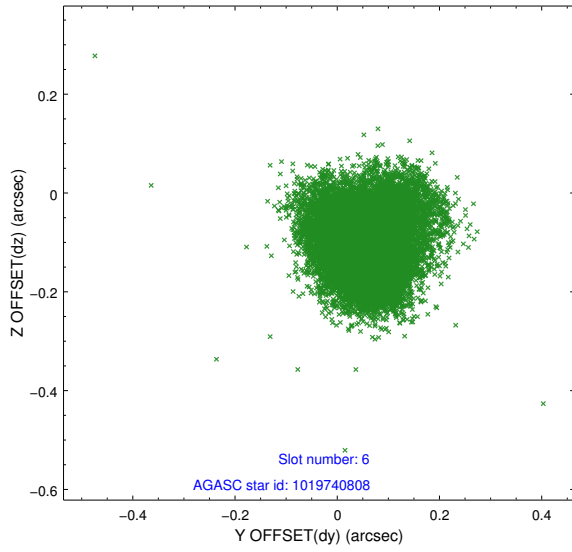
2.4.3 Slot 5



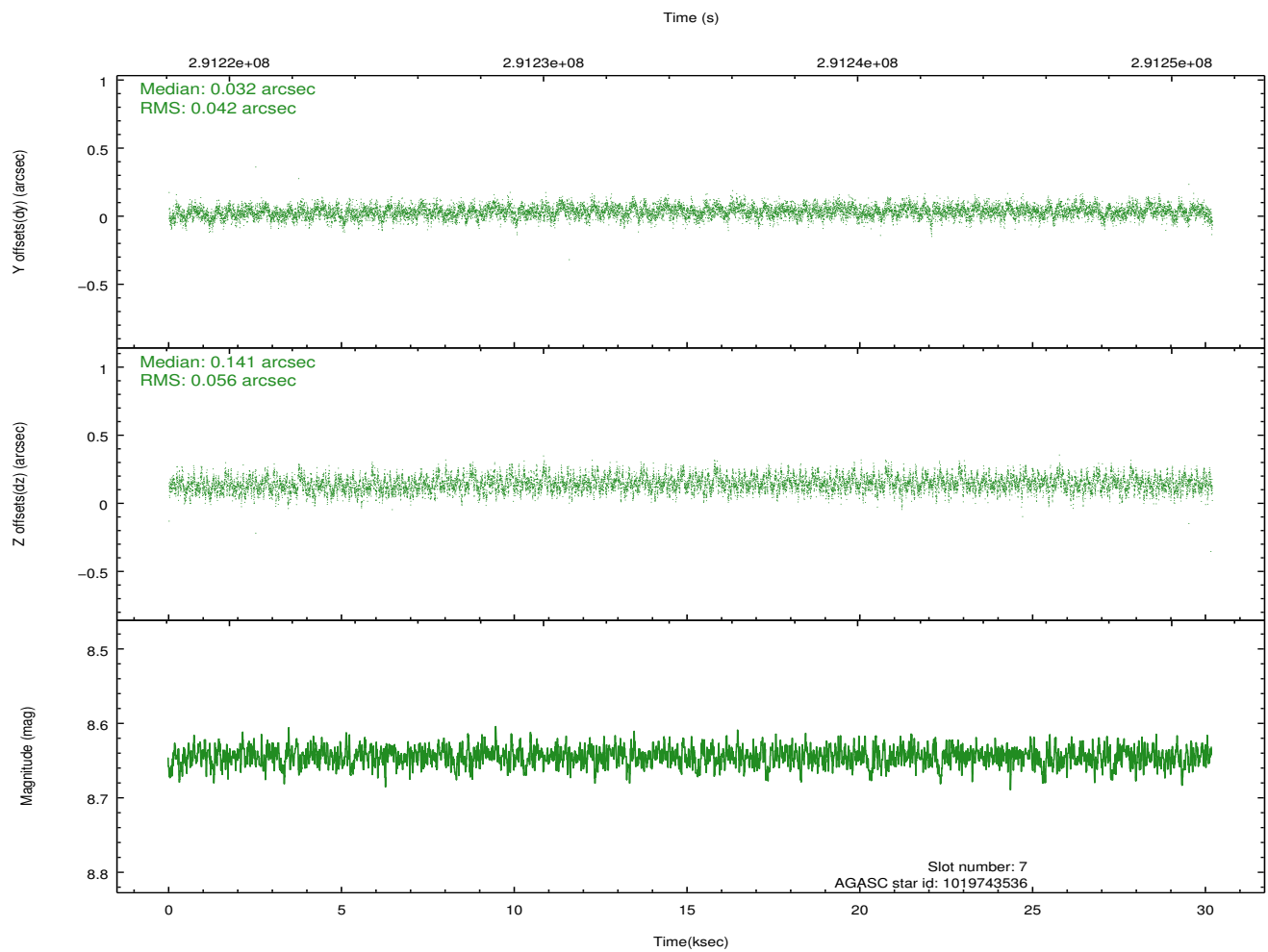
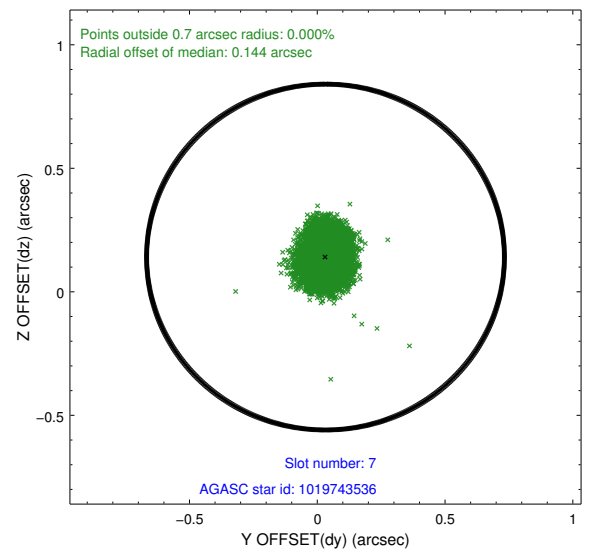
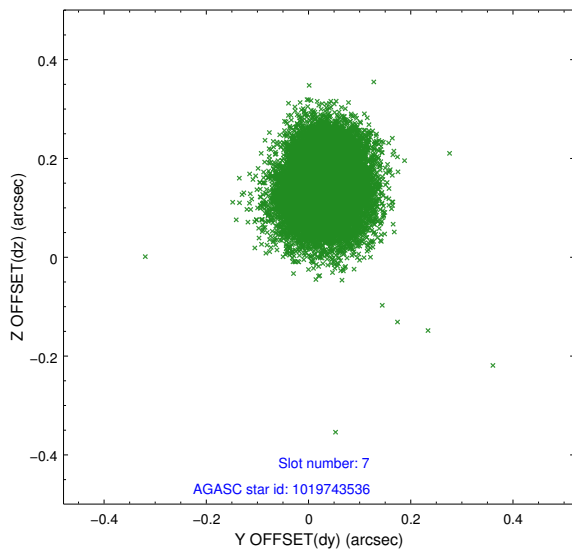
Time (s)



2.4.4 Slot 6

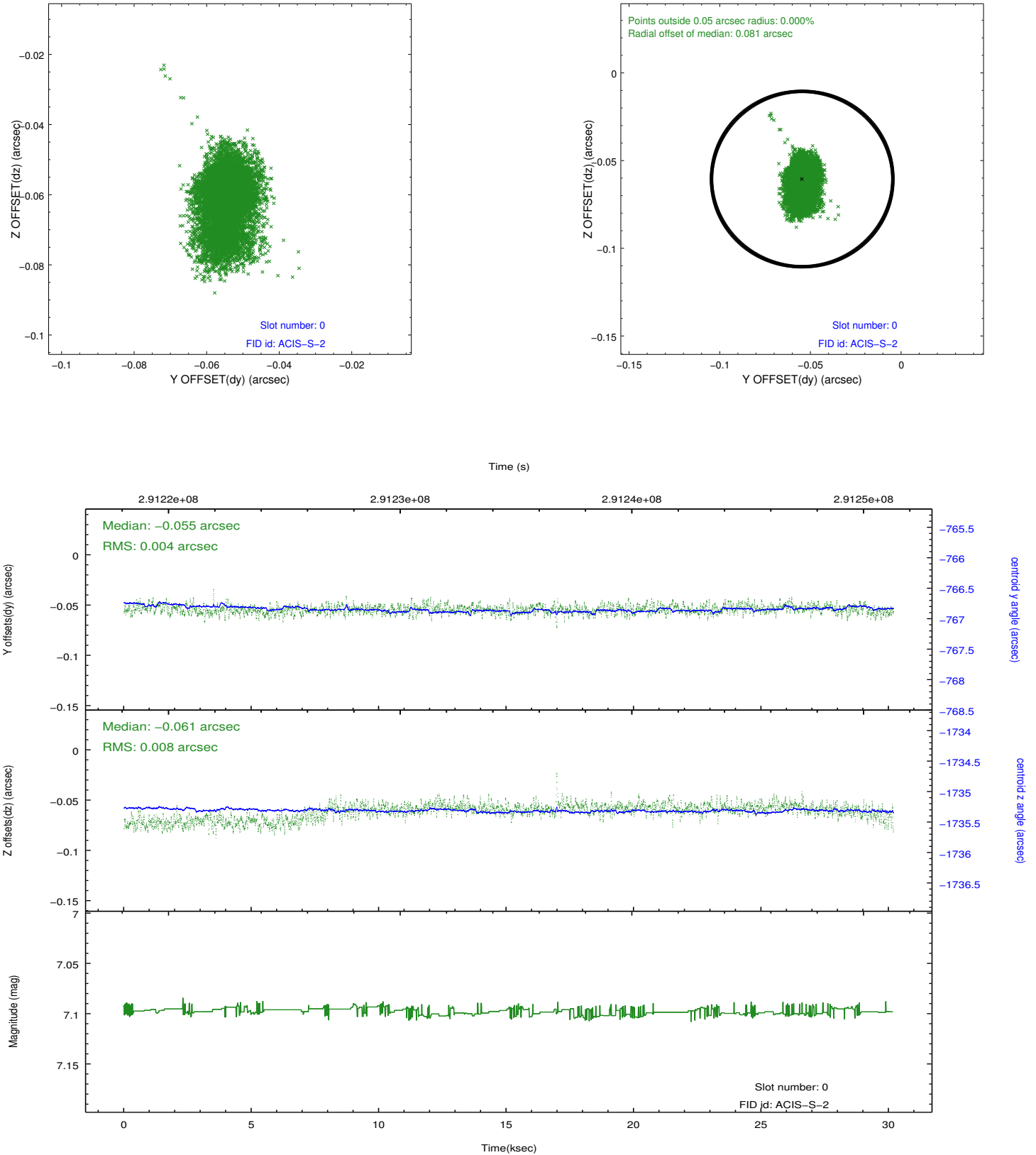


2.4.5 Slot 7

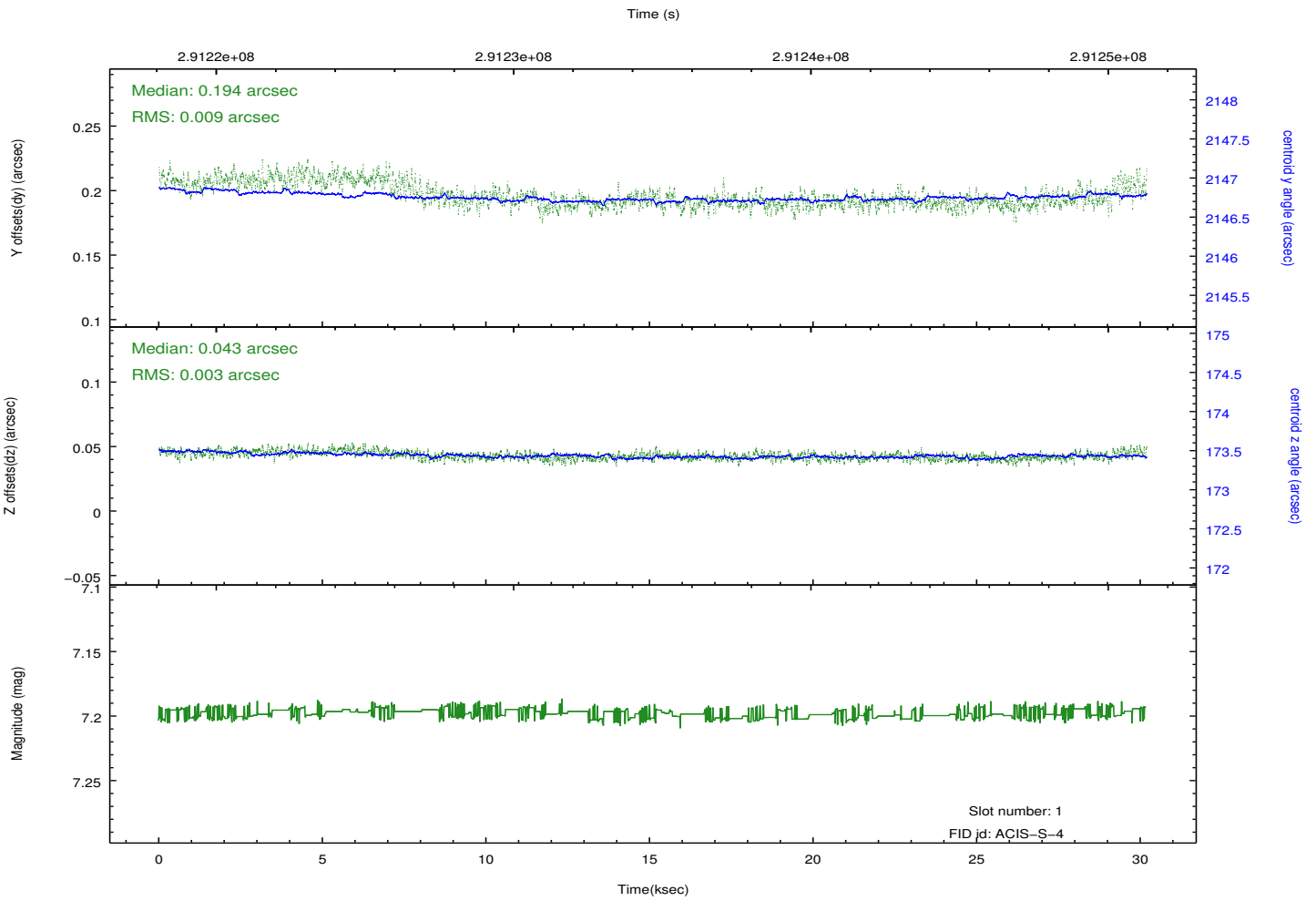
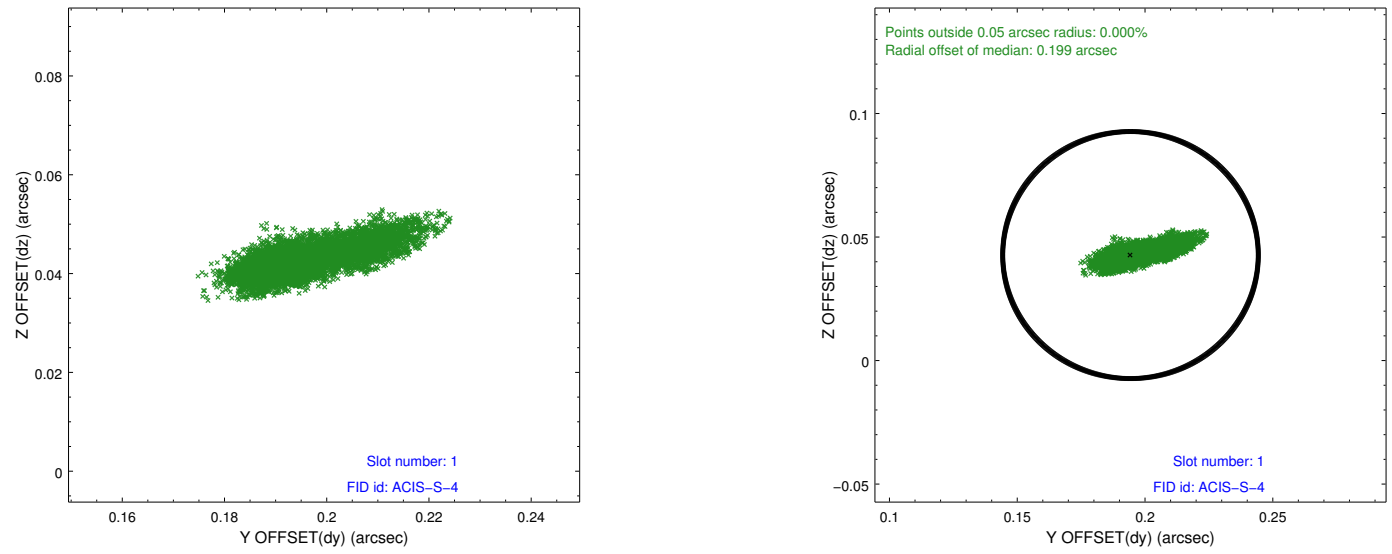


2.5 FID Slots

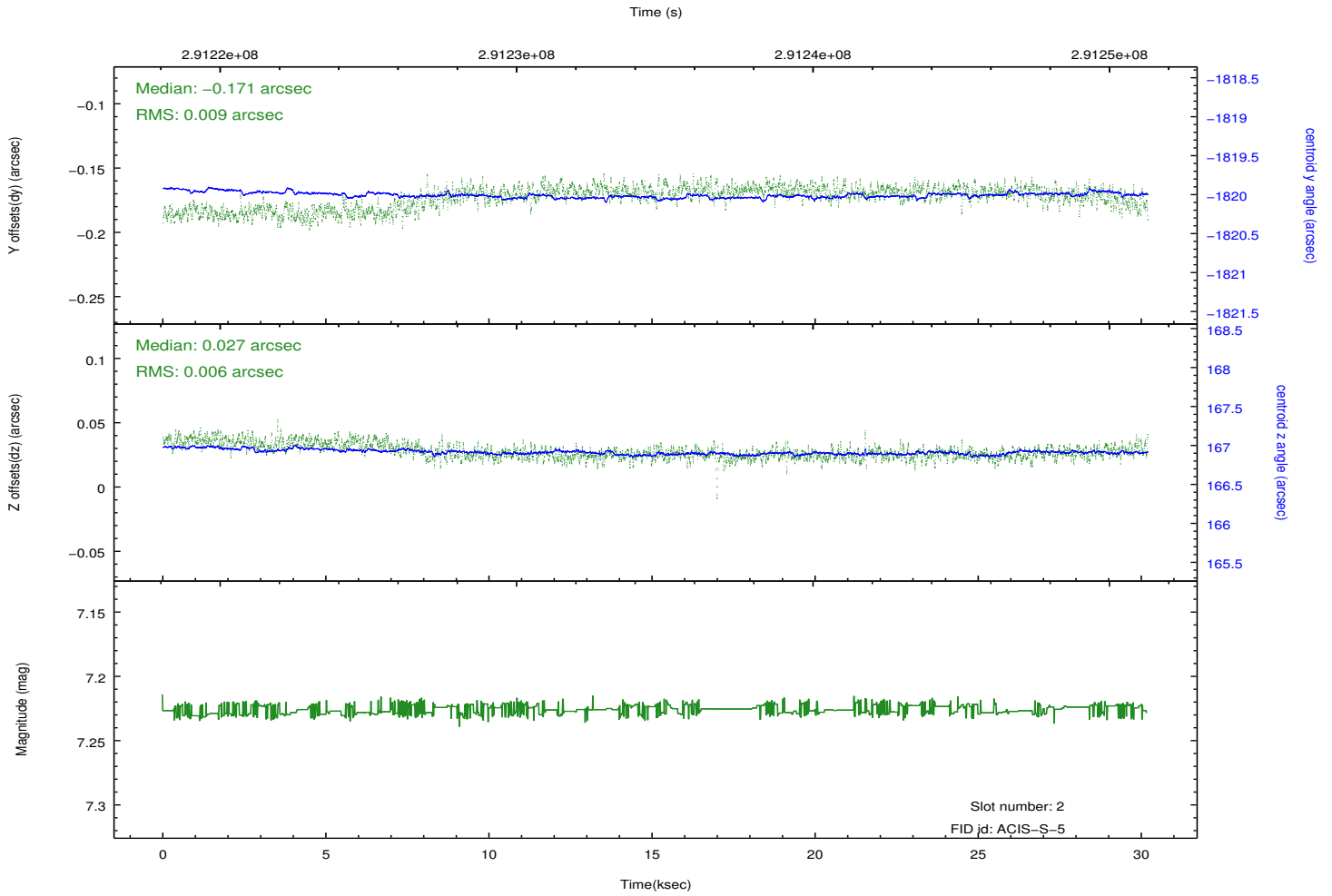
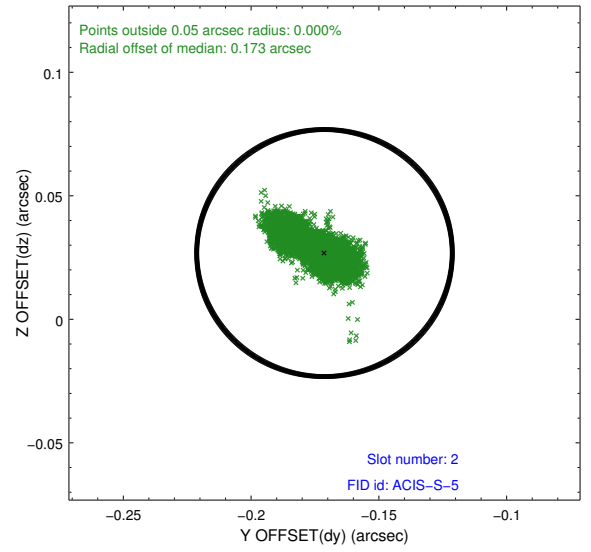
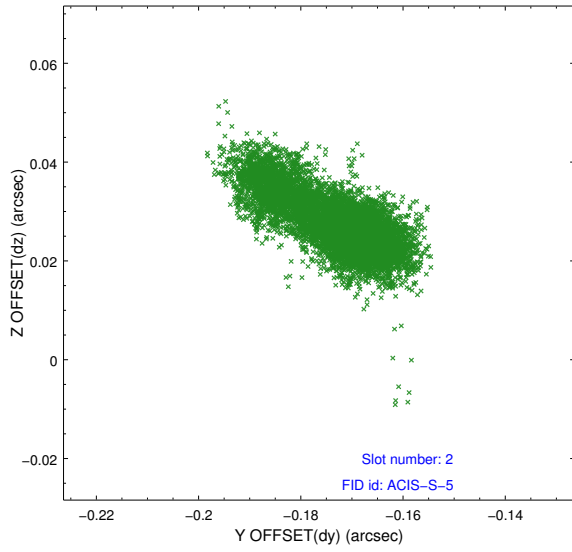
2.5.1 Slot 0



2.5.2 Slot 1



2.5.3 Slot 2



A Summary

A.1 Status

V&V Scientist	Beth Sundheim
V&V Date (YYYY-MM-DD)	2012.04.23
V&V Edition	1
V&V Disposition and Status	OK
V&V Charge Time	30.1847002

A.2 Comments