

V&V Reference Report

L2 ASCDS Version : 8.4.4

Observation 8189 - L2 Version 5
Chandra X-Ray Center

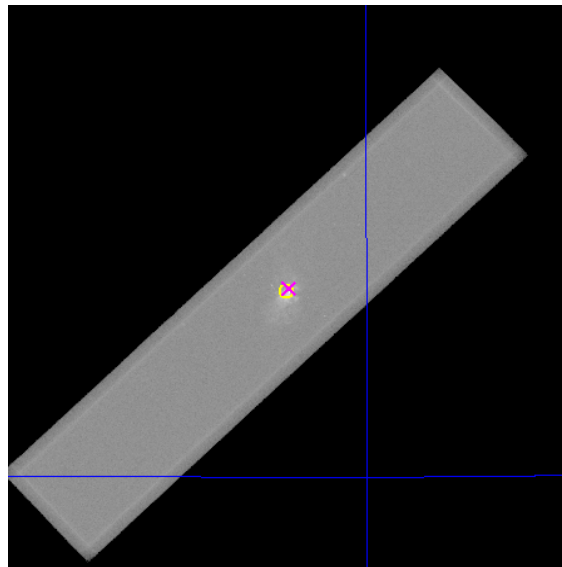
L2 Processing Date : Jun 29 2013

Contents

1	Front	2
2	OBI	3
2.1	OBI	3
2.1.1	Images	3
2.1.2	Parameters	4
2.1.3	Events	4
2.2	Compared Parameters	5
2.3	Aspect	6
2.4	Star Slots	9
2.4.1	Slot 3	9
2.4.2	Slot 4	10
2.4.3	Slot 5	11
2.4.4	Slot 6	12
2.4.5	Slot 7	13
2.5	FID Slots	14
2.5.1	Slot 0	14
2.5.2	Slot 1	15
2.5.3	Slot 2	16
A	Summary	17
A.1	Status	17
A.2	Comments	17

1 Front

seq_num	600626	Sequence number
obs_id	8189	Observation id
title	Searching for X-Ray Pulsars in M82	Proposal title
observer	Prof. Philip Kaaret	Principal investigator
object	M82	Source name
ra_targ	148.9675	Observer's specified target RA [deg]
dec_targ	69.679694	Observer's specified target Dec [deg]
ra_nom	148.95778136364	Nominal RA [deg]
dec_nom	69.683022198874	Nominal Dec [deg]
roll_nom	136.07646129699	Nominal Roll [deg]
revision	5	Processing version of data
ontime	61581.234166801	[s]
livetime	61289.644123777	Ontime multiplied by DTCOR
l2events	3044079	Number of level 2 events

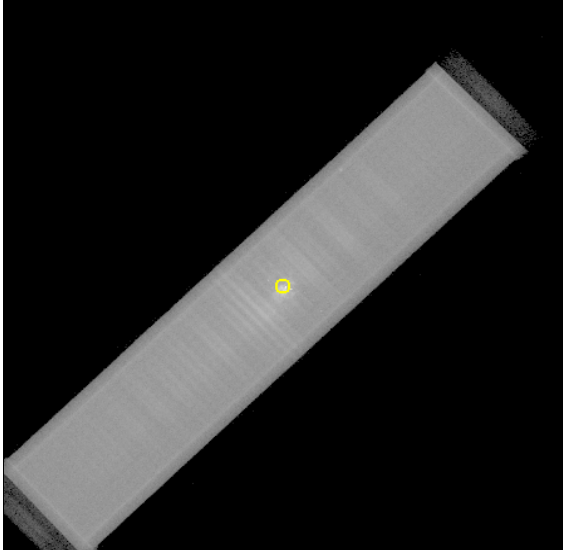


2 OBI

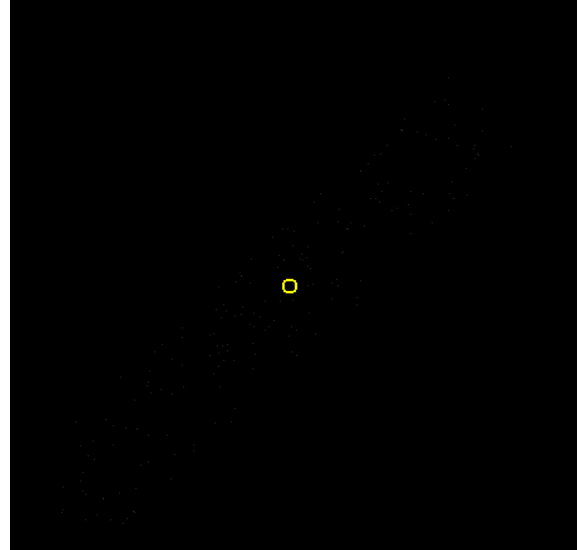
2.1 OBI

2.1.1 Images

Level 1 Image



Level 1 Bad Events



2.1.2 Parameters

obi_num	0	Obi number	sched_exp_time	61400.000000	[s] Scheduled observation exposure time
ascdsver	10	Processing system revision	ontime	61581.234166801	[s]
caldsver	4.5.7	 	l1events	4314477	Number of level 1 events
date	2013-06-29T05:57:01	Date and time of file creation			
revision	5	Processing version of data			

2.1.3 Events

Level 1 Events

	segment 1	segment 2	segment 3
level 1 events	4975	4309488	14
rejected events	69	57601	9
rejected %	1%	1%	64%

2.2 Compared Parameters

Parameter	Planned	Actual	Parameter	Planned	Actual
Instrument	HRC	HRC	Obspar format version number	7	7
Detector	HRC-S	HRC-S	Obspar file type	PREDICTED	ACTUAL
Grating	NONE	NONE	Obspar update status	NONE	UPDATED
Data mode	OBSERVING	OBSERVING			
Observation mode	POINTING	POINTING			
[deg] Pointing RA	149.038879	148.9577813636353			
[deg] Pointing Dec	69.677505	69.68302219887366			
[deg] Pointing Roll	135.933069	136.0764612969935			
[mm] SIM focus pos	-1.533336	-1.526339935833849			
[mm] SIM defocus	7.710433287538843e-07	0.006996703570447904			
[mm] SIM translation stage pos	250.455976	250.466033080201			
[mm] SIM translation stage offset	0	-0.01005468664627074			
[s] Observation start time (MET)	284718778.184000	284717796.72674			
Observation start date	2007-01-09T08:31:53	2007-01-09T08:16:36			
[s] Observation end time (MET)	284780178.184000	284781041.27974			
Observation end date	2007-01-10T01:35:13	2007-01-10T01:50:41			

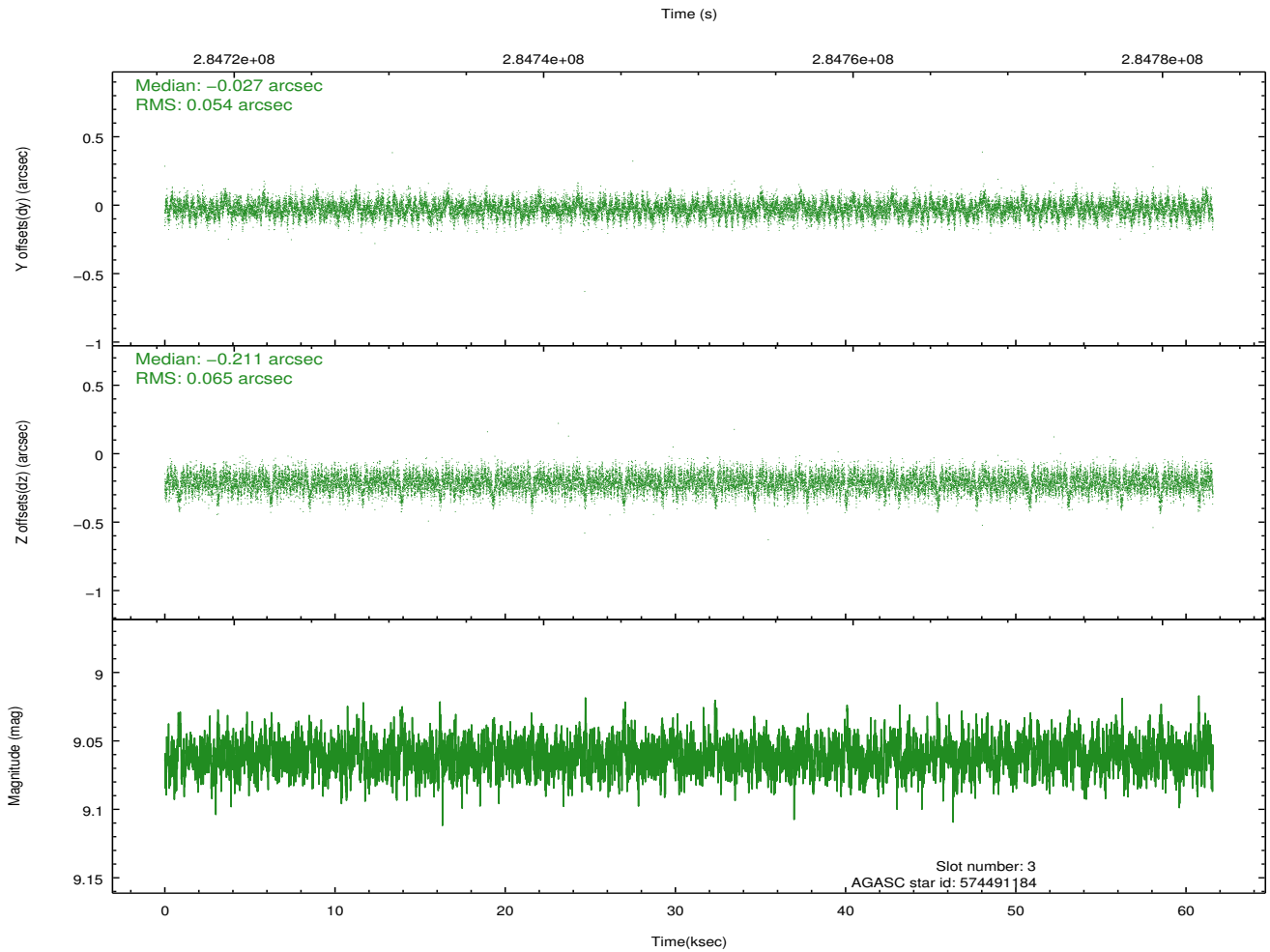
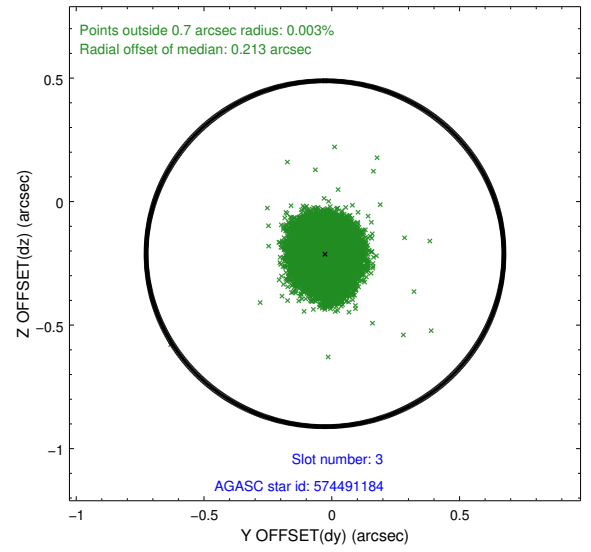
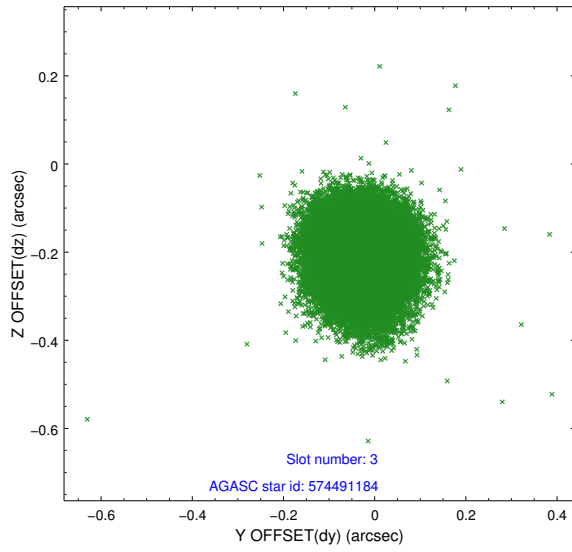
2.3 Aspect

Slot Statistics

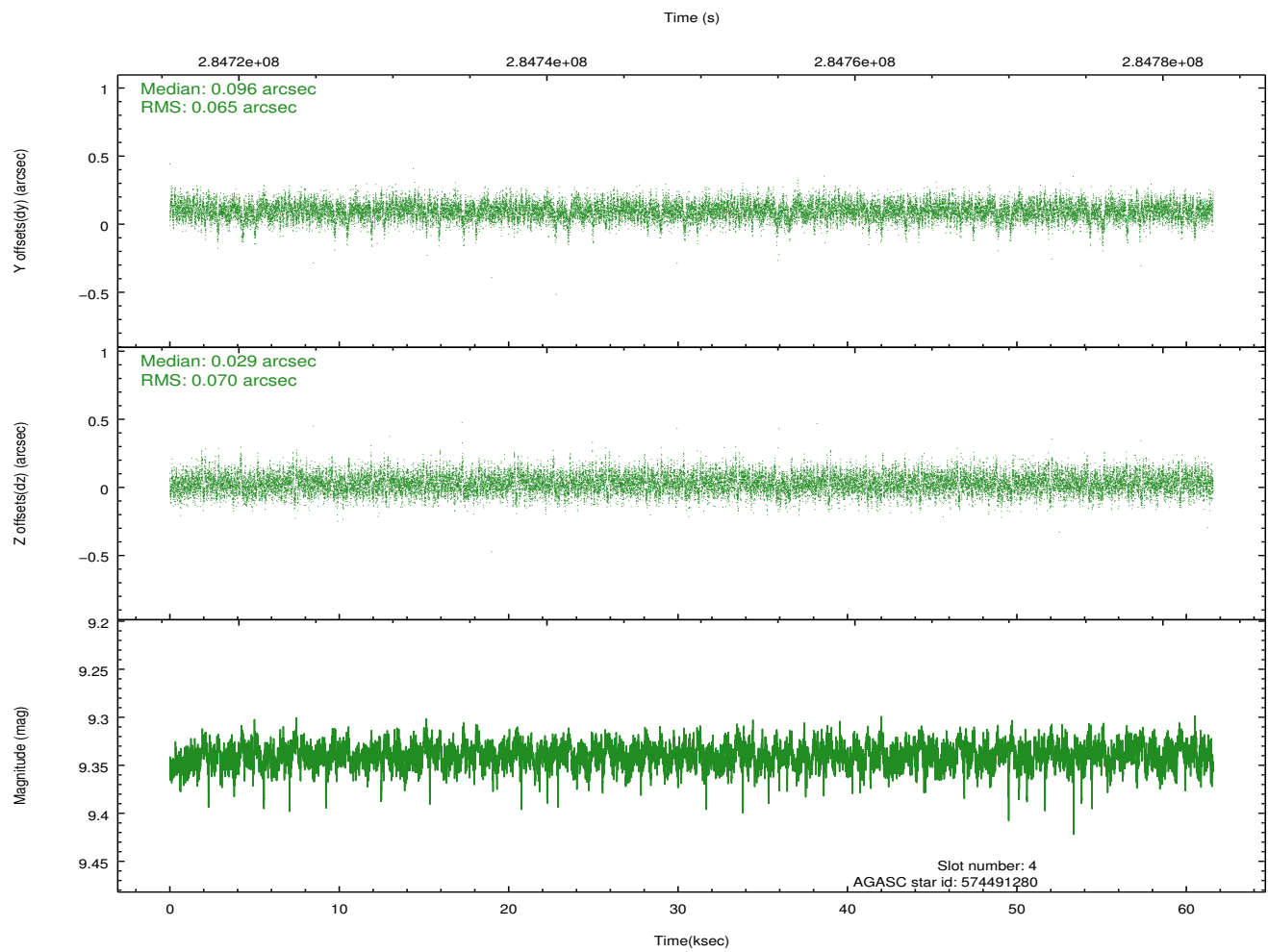
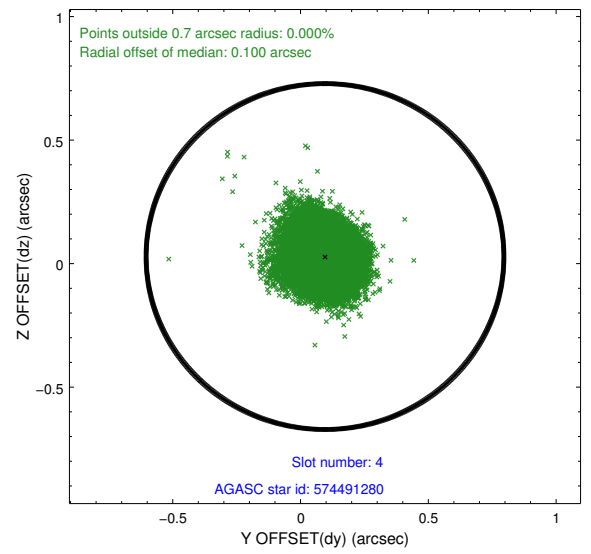
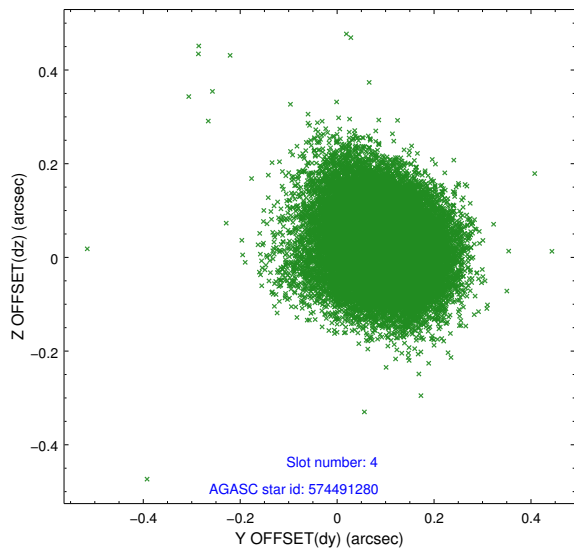
slot	status	id	mag	n_pts	med_dy	med_dz	dr1	dr2	ra	dec	mean_y	mean_z
0	FID	HRC-S-1	7.00	15020	0.062	-0.201	0.010	0.016	0.000000	0.000000	-1170.45	-463.73
1	FID	HRC-S-2	6.98	15020	0.241	-0.117	0.016	0.032	0.000000	0.000000	1229.30	-456.35
2	FID	HRC-S-3	7.00	15019	0.090	0.016	0.017	0.025	0.000000	0.000000	-1173.05	565.98
3	GUIDE	574491184	9.06	30020	-0.027	-0.211	0.090	0.144	148.582453	69.768699	638.31	157.67
4	GUIDE	574491280	9.34	30014	0.096	0.029	0.100	0.168	148.611567	69.450135	-179.68	963.39
5	GUIDE	574491872	9.27	29880	-0.121	-0.048	0.102	0.166	147.207613	69.765453	1880.57	1335.78
6	GUIDE	574886464	9.78	29936	-0.039	0.156	0.136	0.229	149.898674	70.203982	570.98	-2095.92
7	GUIDE	574886496	8.50	30029	0.089	0.079	0.081	0.132	148.945563	70.041136	993.67	-860.78

2.4 Star Slots

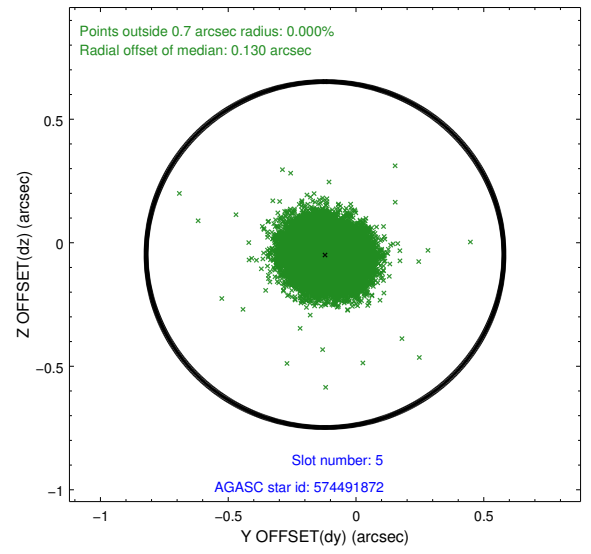
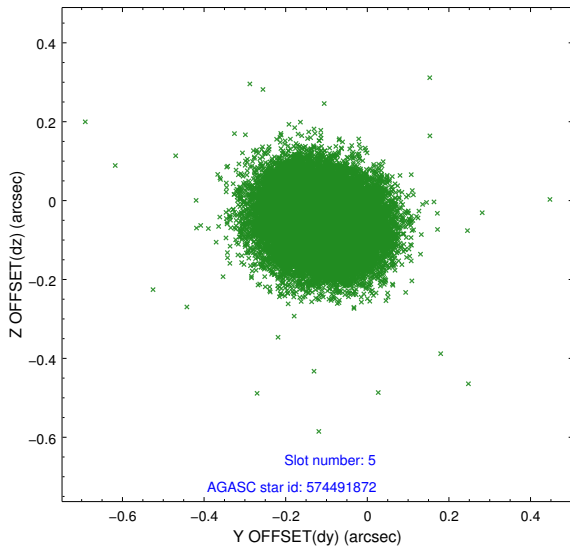
2.4.1 Slot 3



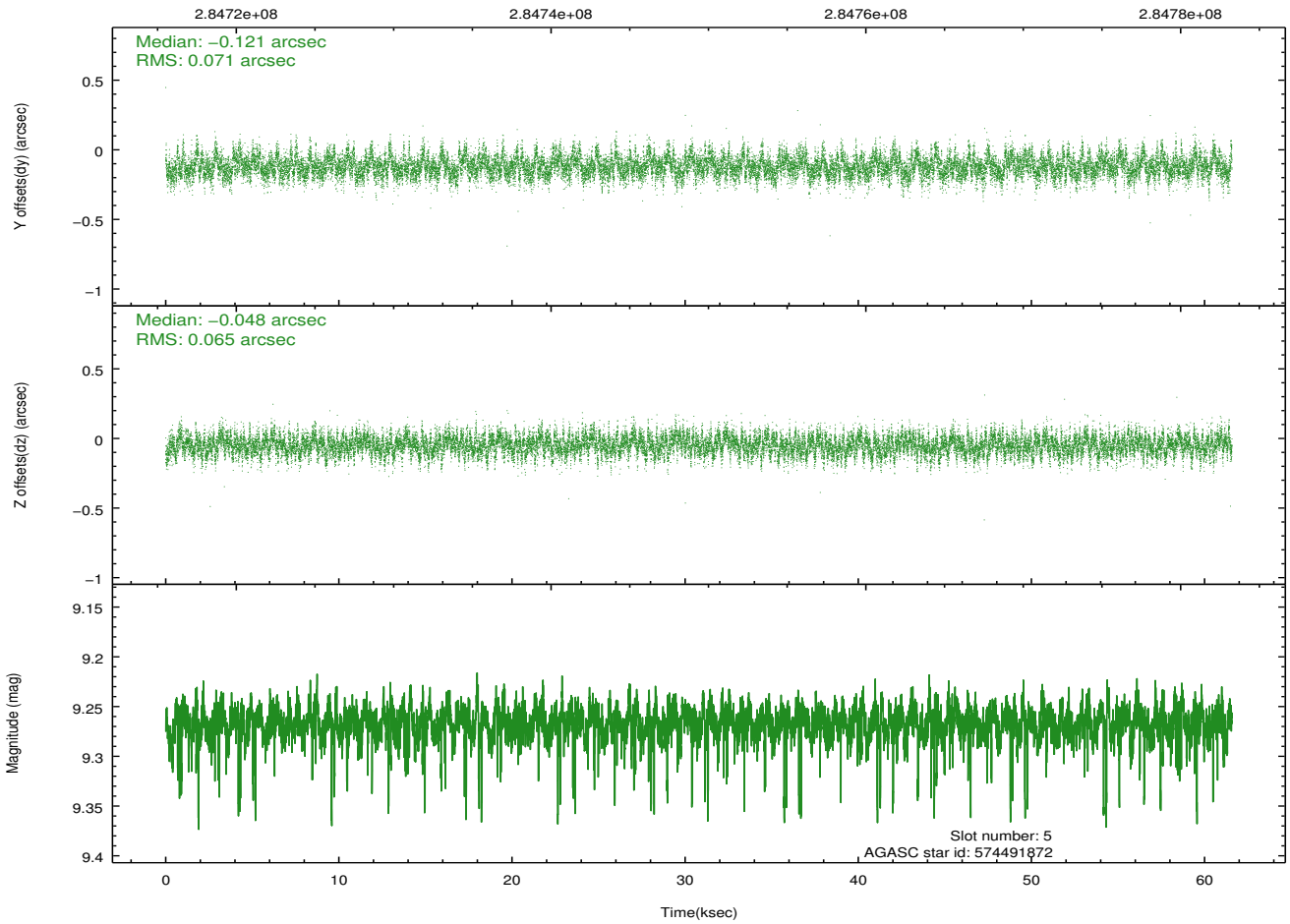
2.4.2 Slot 4



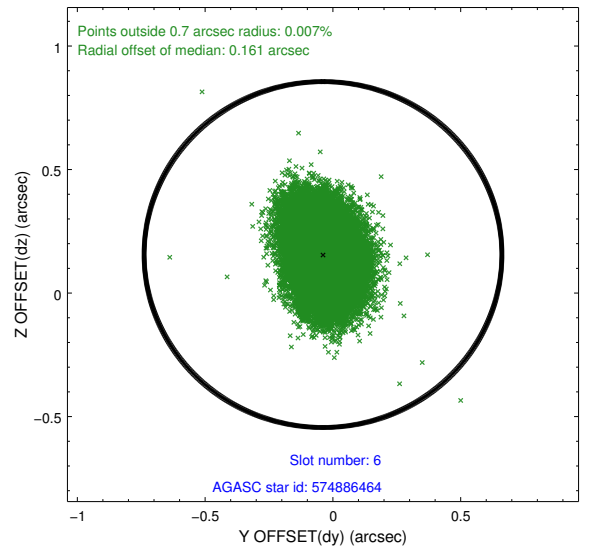
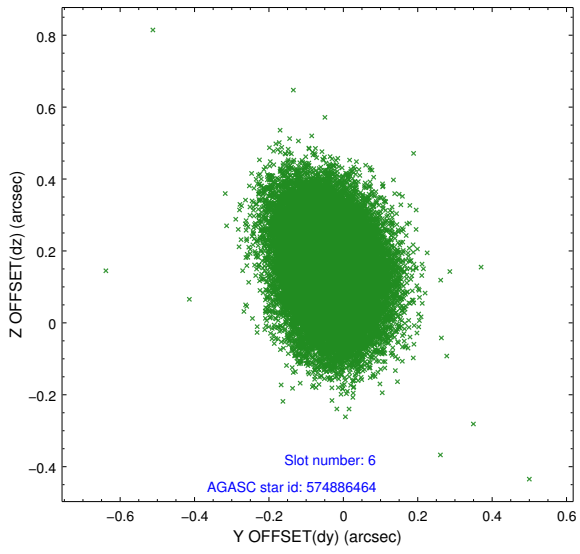
2.4.3 Slot 5



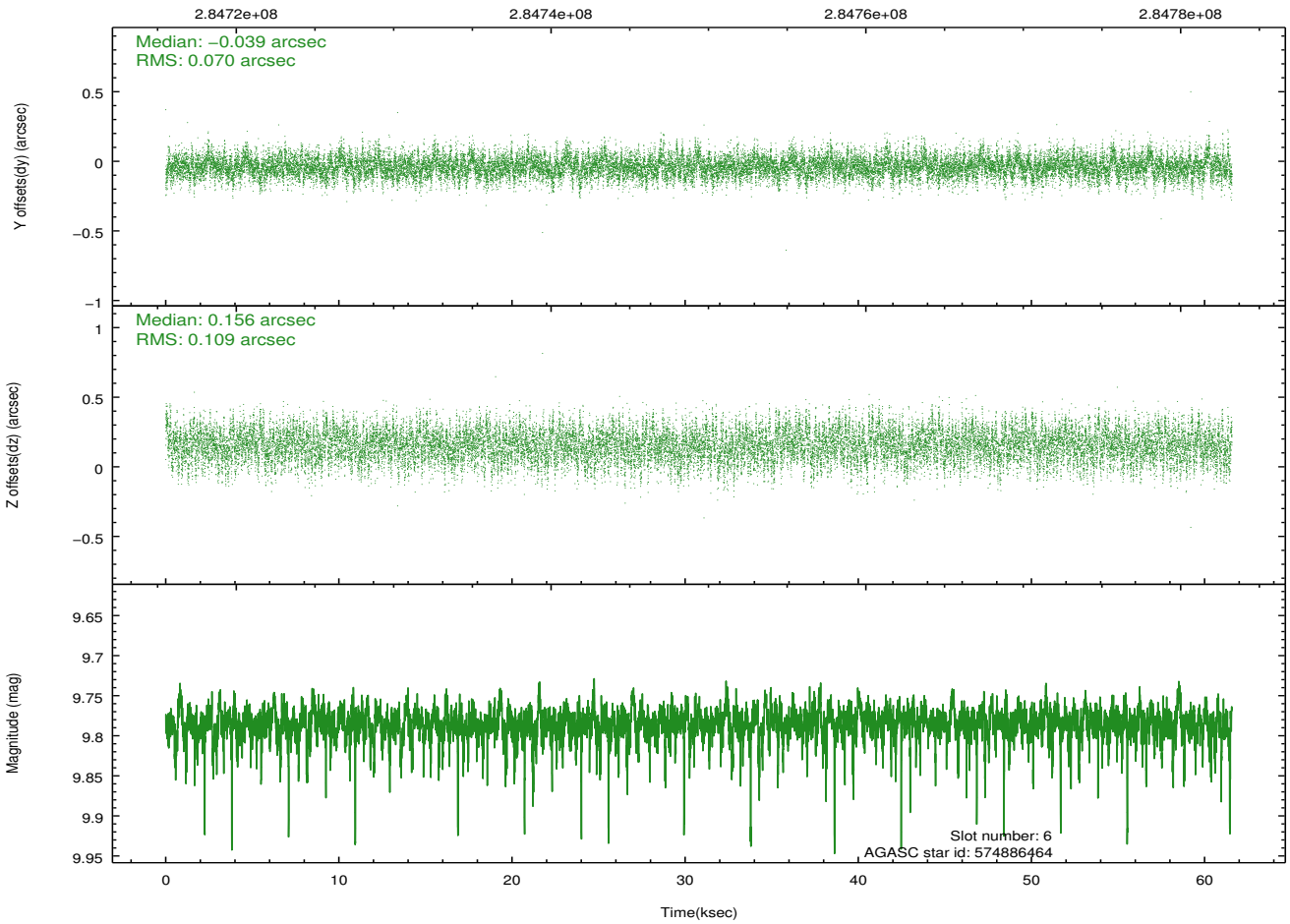
Time (s)



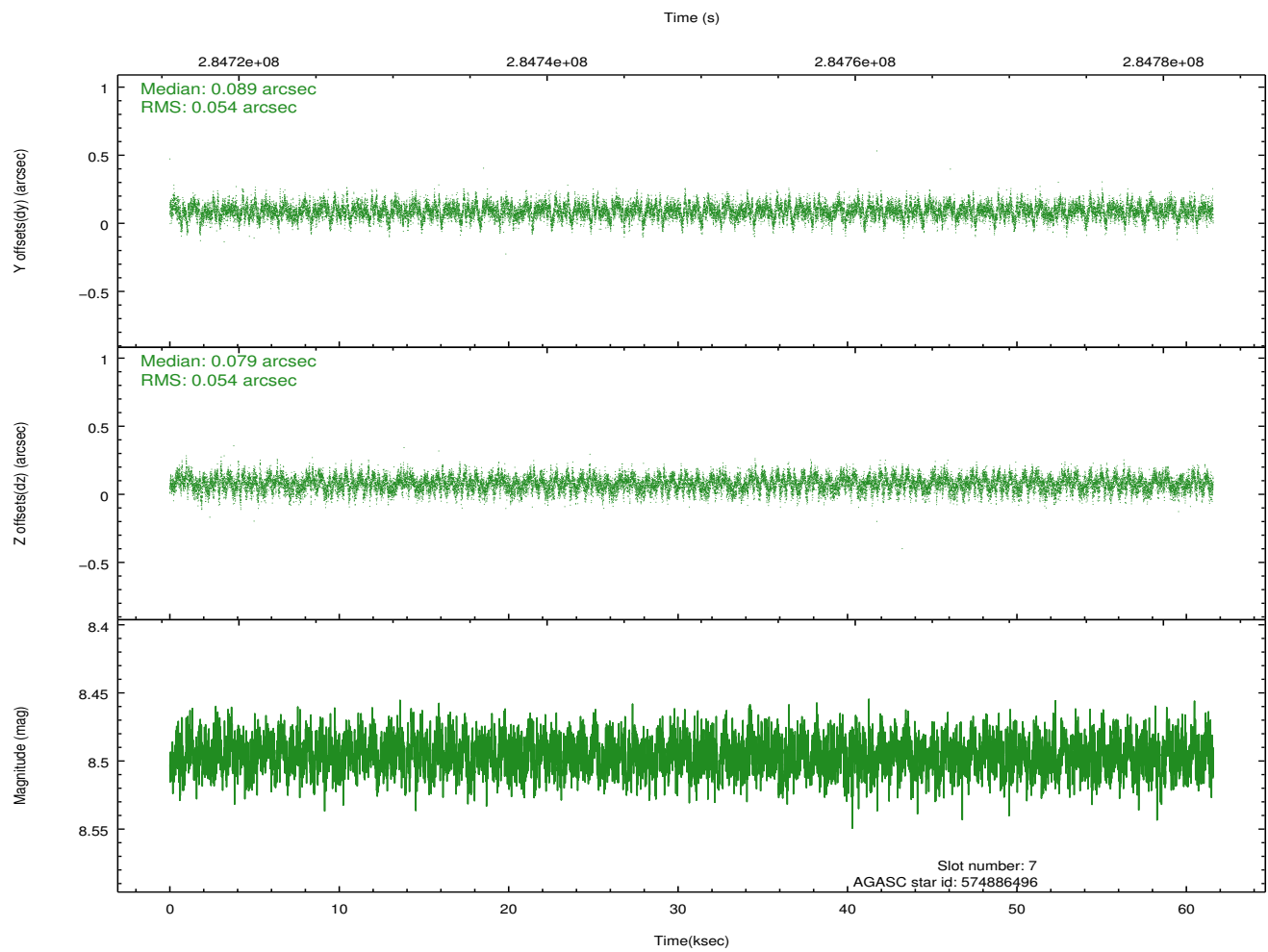
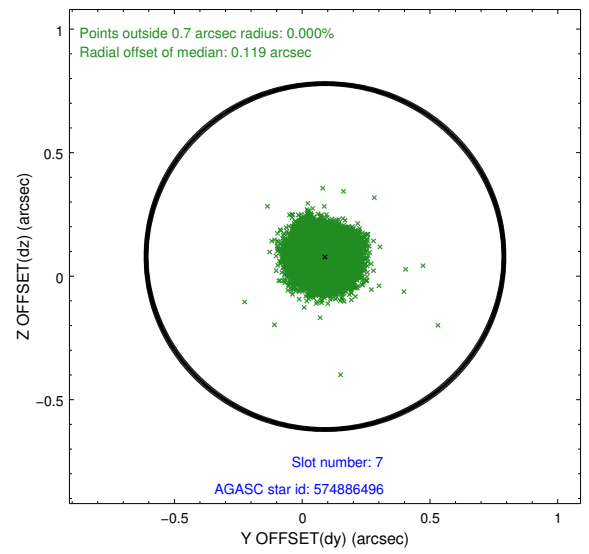
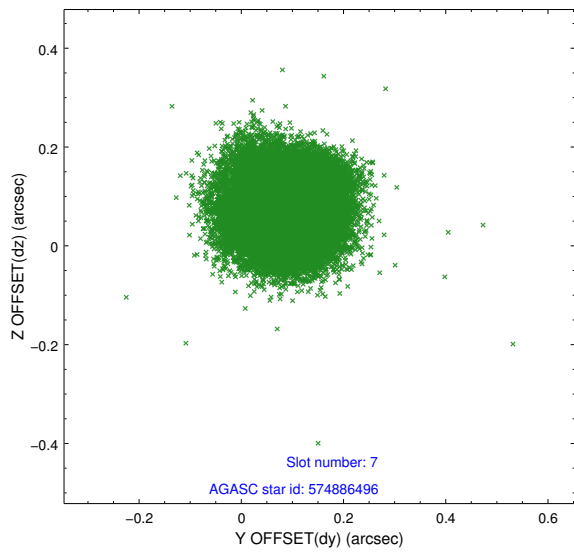
2.4.4 Slot 6



Time (s)

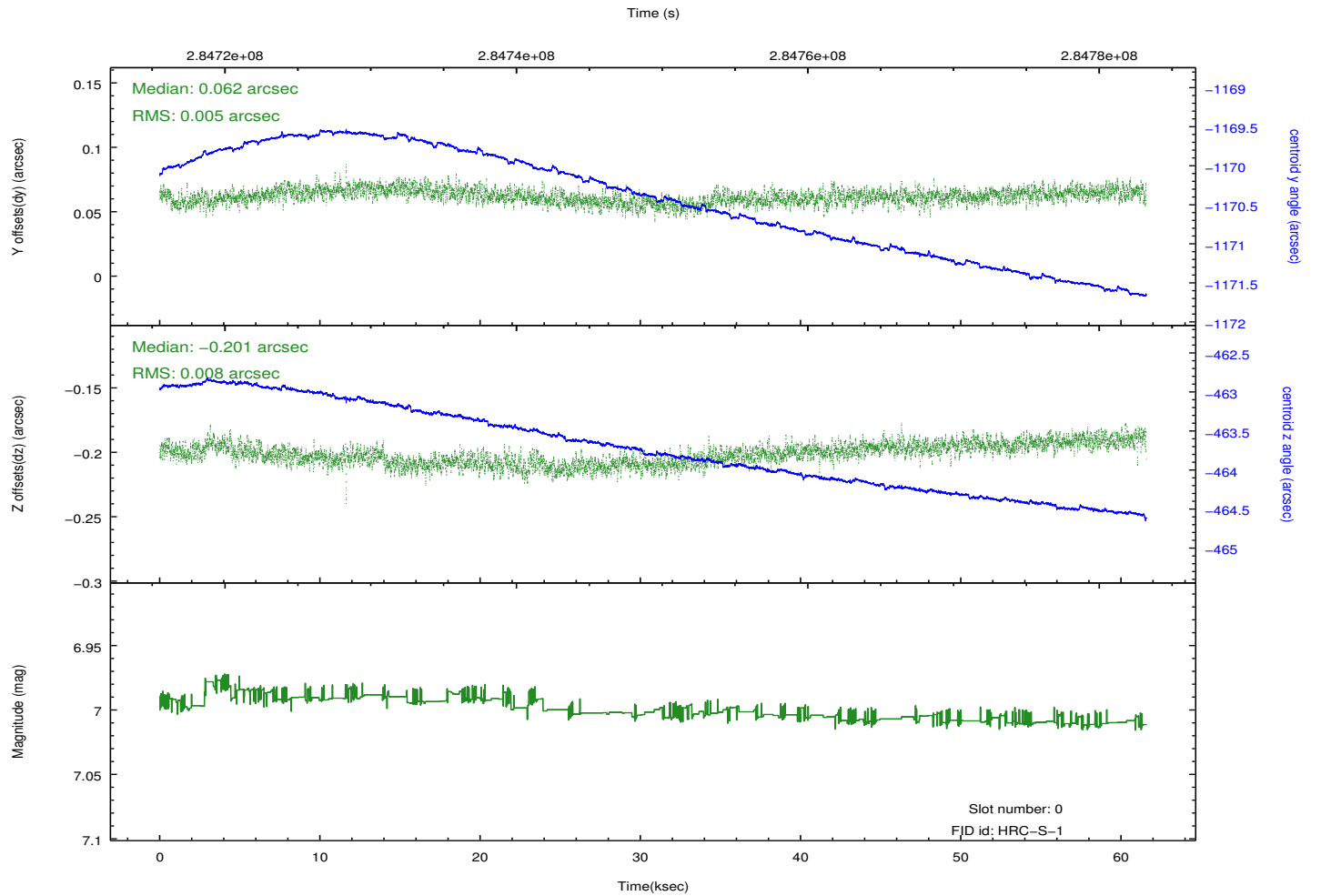
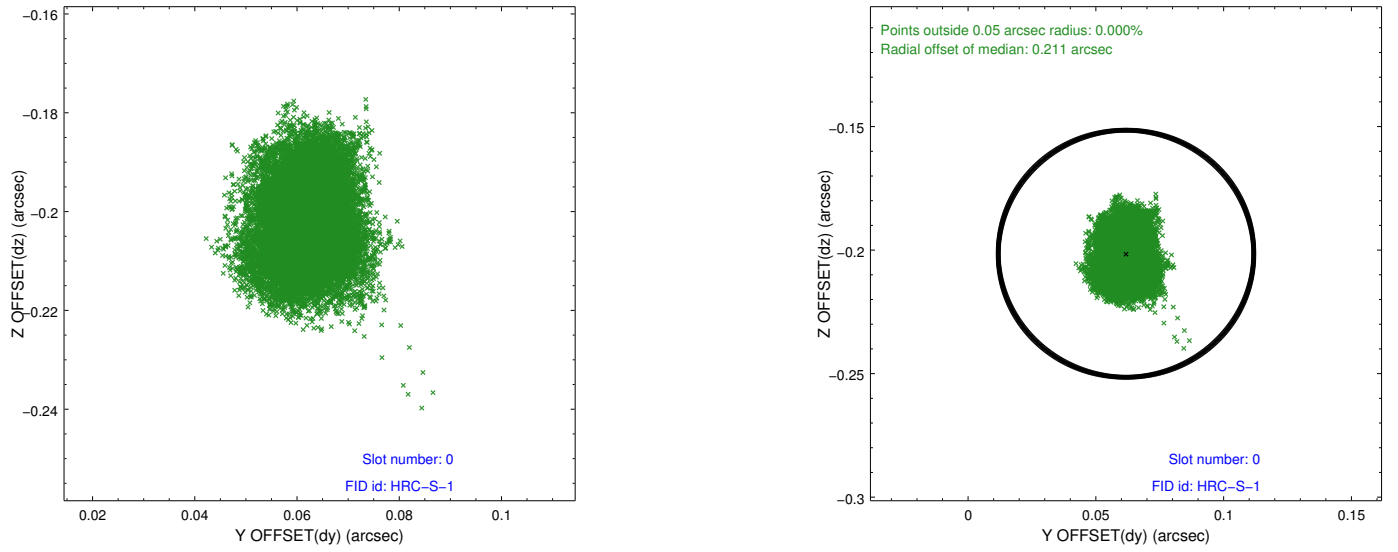


2.4.5 Slot 7

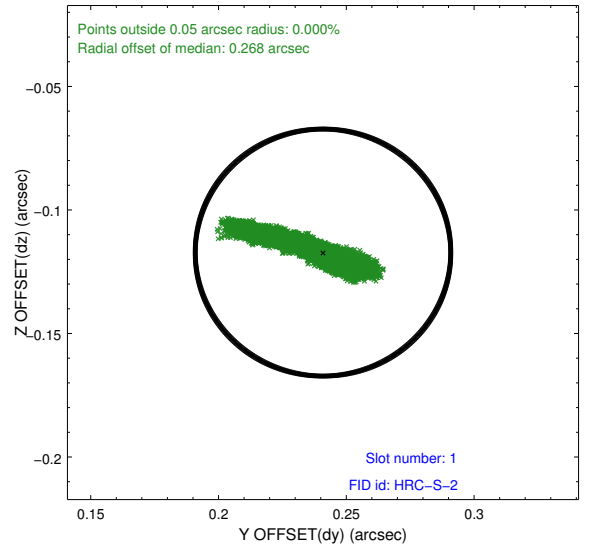
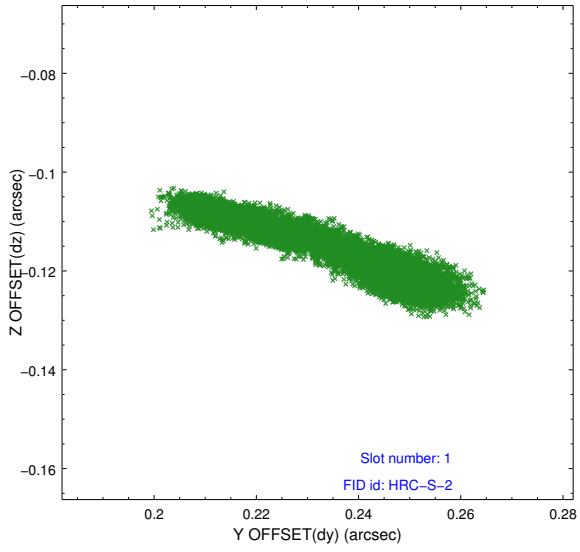


2.5 FID Slots

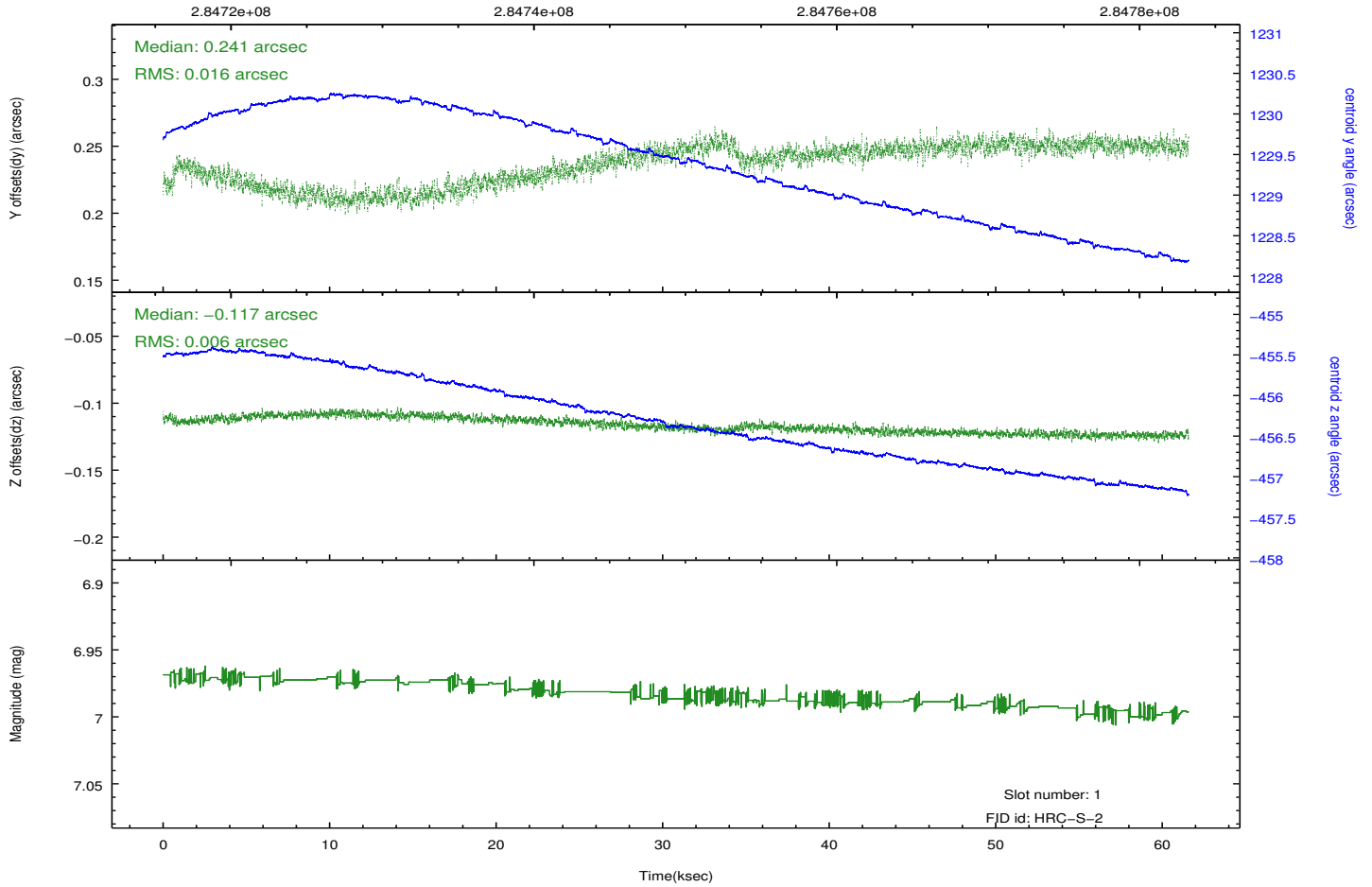
2.5.1 Slot 0



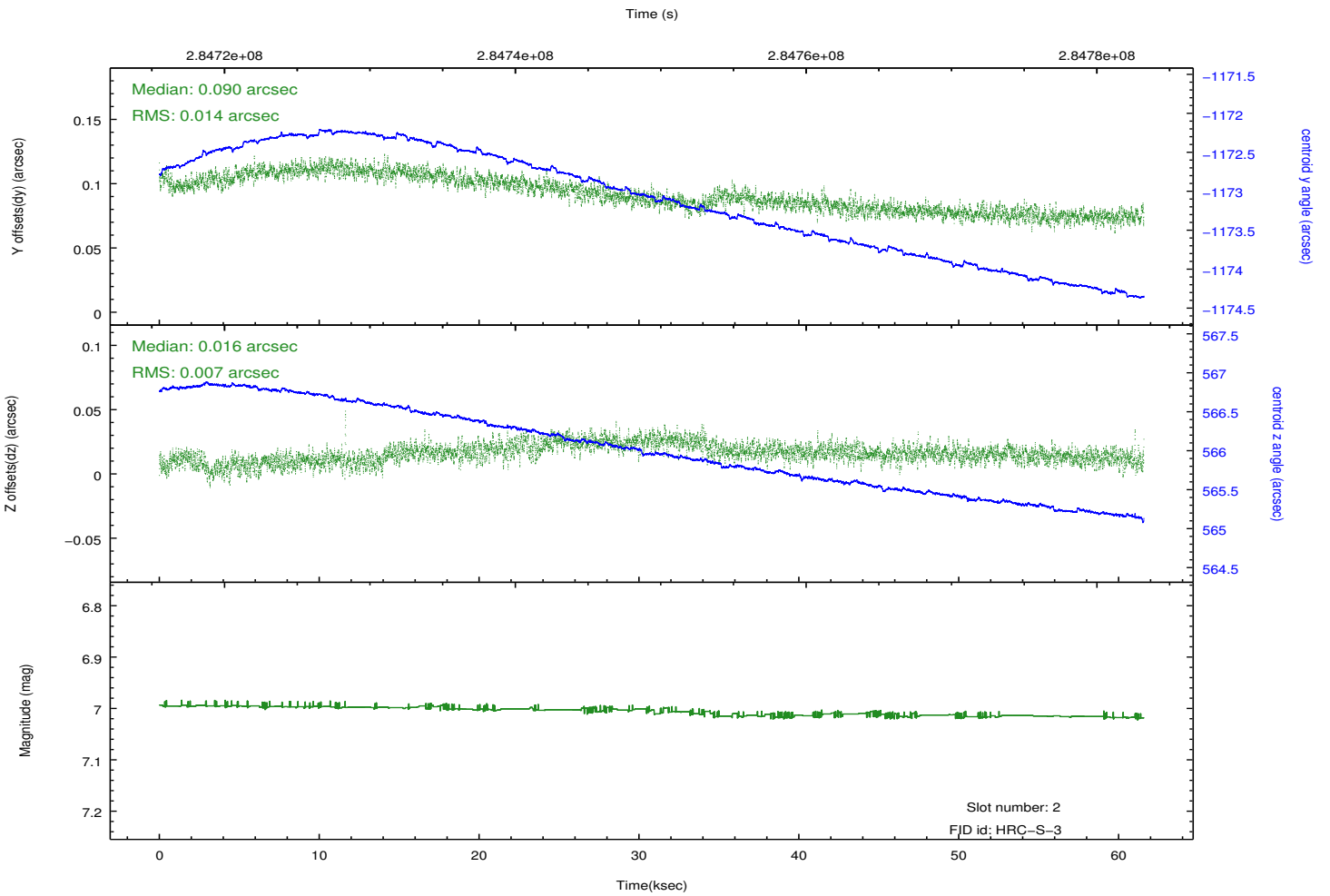
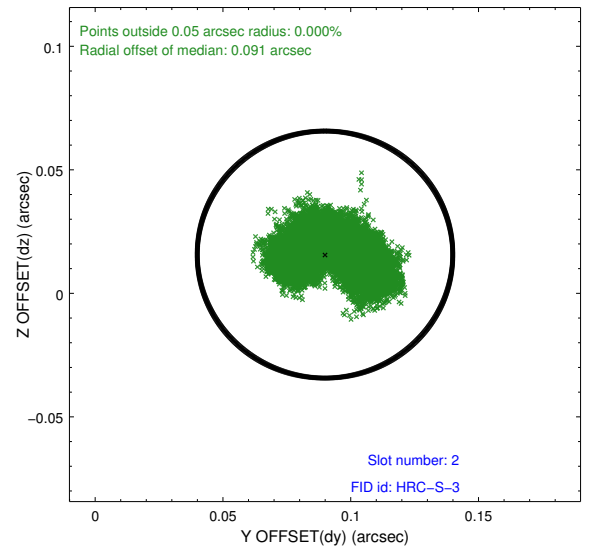
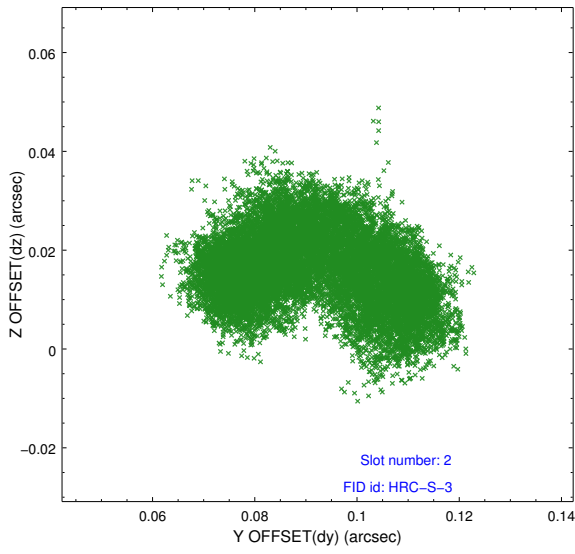
2.5.2 Slot 1



Time (s)



2.5.3 Slot 2



A Summary

A.1 Status

V&V Scientist	Beth Sundheim
V&V Date (YYYY-MM-DD)	2013.07.01
V&V Edition	1
V&V Disposition and Status	OK
V&V Charge Time	61.5812341

A.2 Comments