

# V&V Reference Report

## L2 ASCDS Version : 8.4.4

Observation 8199 - L2 Version 2  
Chandra X-Ray Center

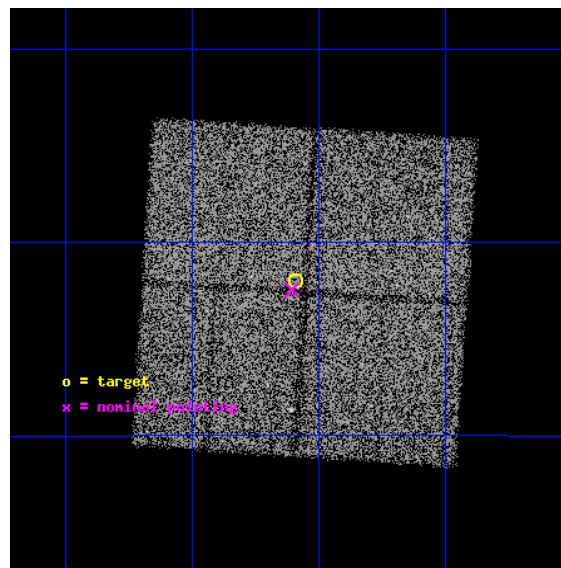
L2 Processing Date : Apr 28 2012

## Contents

<b>1</b>	<b>Front</b>	<b>2</b>
<b>2</b>	<b>OBI</b>	<b>3</b>
2.1	OBI . . . . .	3
2.1.1	Images . . . . .	3
2.1.2	Bias . . . . .	3
2.1.3	Parameters . . . . .	4
2.1.4	Events . . . . .	4
2.2	Compared Parameters . . . . .	5
2.3	Aspect . . . . .	6
2.4	Star Slots . . . . .	9
2.4.1	Slot 3 . . . . .	9
2.4.2	Slot 4 . . . . .	10
2.4.3	Slot 5 . . . . .	11
2.4.4	Slot 6 . . . . .	12
2.4.5	Slot 7 . . . . .	13
2.5	FID Slots . . . . .	14
2.5.1	Slot 0 . . . . .	14
2.5.2	Slot 1 . . . . .	15
2.5.3	Slot 2 . . . . .	16
<b>A</b>	<b>Summary</b>	<b>17</b>
A.1	Status . . . . .	17
A.2	Comments . . . . .	17

# 1 Front

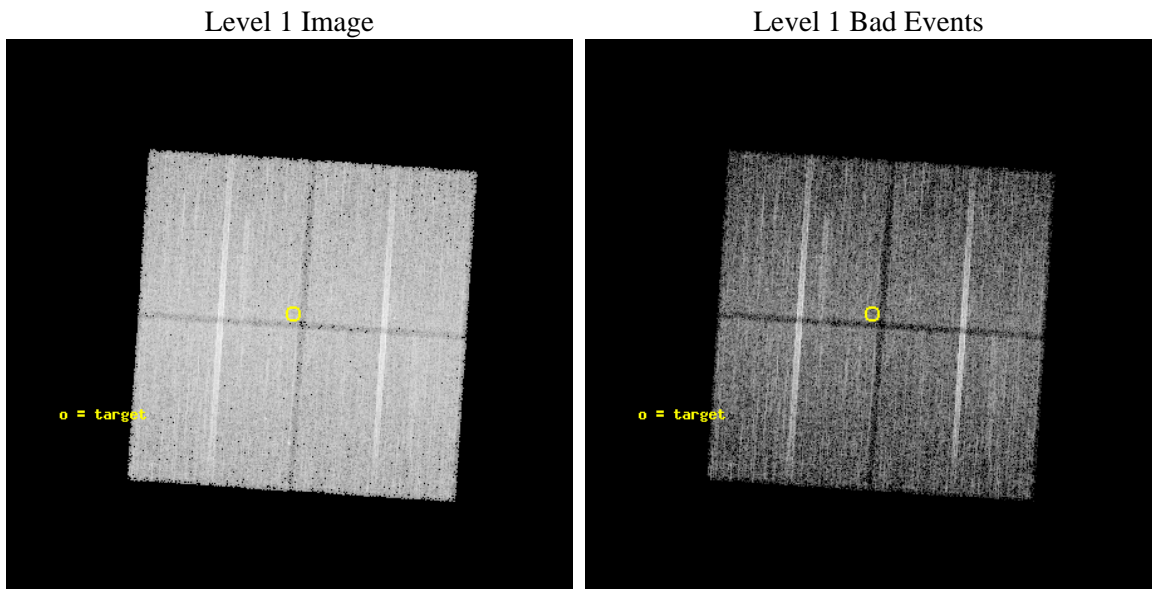
seq_num	600635	Sequence number
obs_id	8199	Observation id
title	Galactic Bulge Latitude Survey-2	Proposal title
observer	Professor Johnathan Grindlay	Principal investigator
object	GBW19	Source name
dtcycle	0	&#160
cycle	P	events from which exps? Prim/Second/Both
ra_targ	265.148333	Observer's specified target RA [deg]
dec_targ	-28.033556	Observer's specified target Dec [deg]
ra_nom	265.15164136493	Nominal RA [deg]
dec_nom	-28.041109806621	Nominal Dec [deg]
roll_nom	273.81024241893	Nominal Roll [deg]
revision	2	Processing version of data
ontime	14876.818123996	Sum of GTIs [s]
livetime	14682.441543052	Livetime [s]
ontime0	14883.100114465	Sum of GTIs [s]
ontime1	14883.100114465	Sum of GTIs [s]
ontime2	14883.100114465	Sum of GTIs [s]
ontime3	14876.818123996	Sum of GTIs [s]
l2events	65897	Number of level 2 events



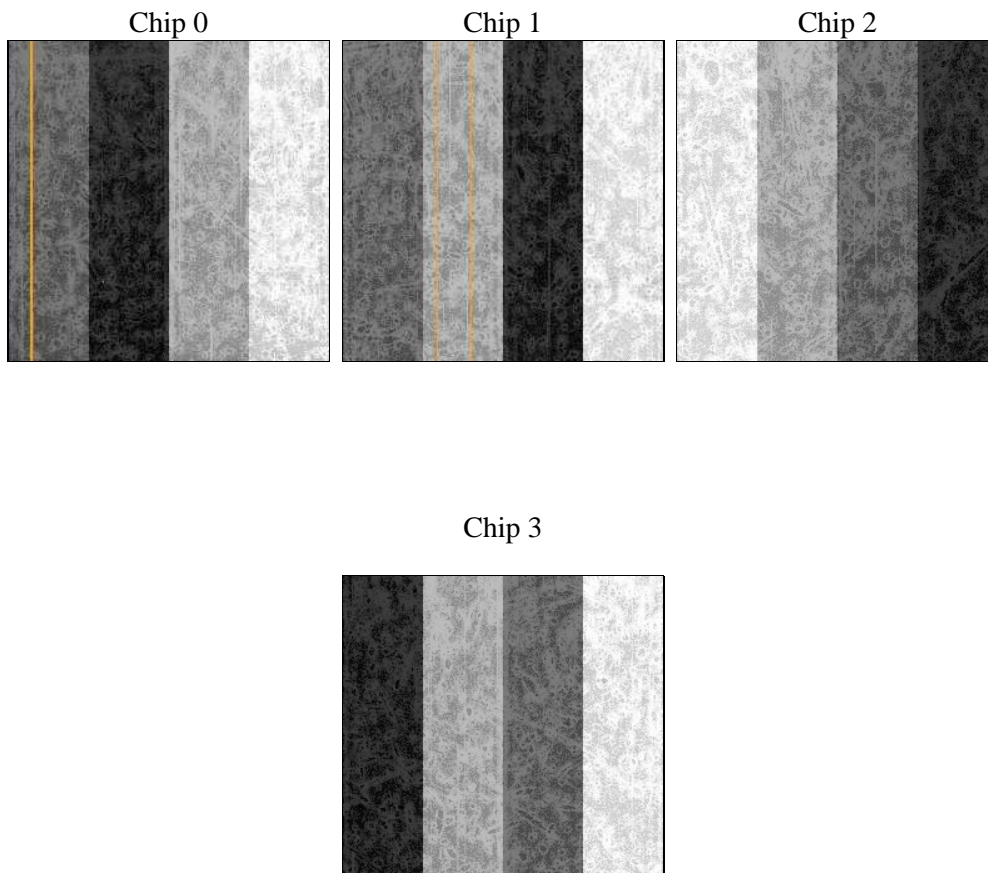
## 2 OBI

### 2.1 OBI

#### 2.1.1 Images



#### 2.1.2 Bias



### 2.1.3 Parameters

obi_num	0	Obi number	sched_exp_time	14700.000000	[s] Scheduled observation exposure time
ascdsver	8.4.4	Processing system revision	ontime	14876.818123996	Sum of GTIs [s]
caldsver	4.4.9	&#160	ontime0	14883.100114465	Sum of GTIs [s]
date	2012-04-28T15:54:40	Date and time of file creation	ontime1	14883.100114465	Sum of GTIs [s]
revision	2	Processing version of data	ontime2	14883.100114465	Sum of GTIs [s]
			ontime3	14876.818123996	Sum of GTIs [s]
			l1events	557326	Number of level 1 events

### 2.1.4 Events

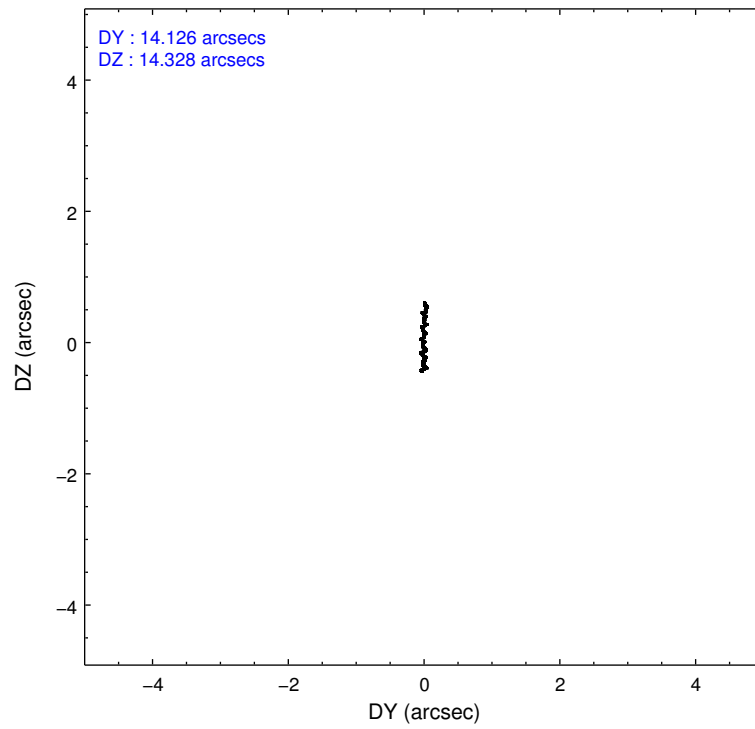
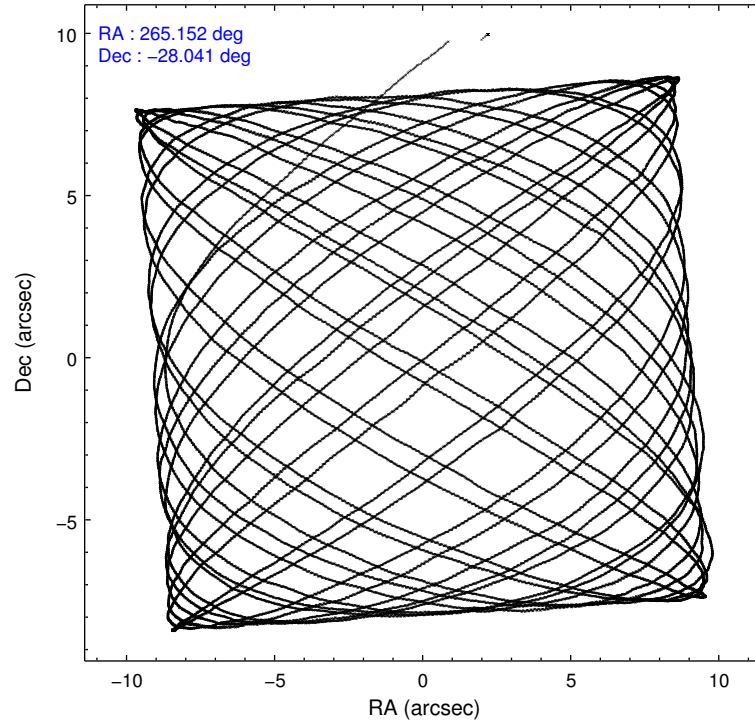
	ccd 0	ccd 1	ccd 2	ccd 3
level 1 events	135378	134015	146188	141745
rejected events	116503	114231	127235	123304
rejected %	86%	85%	87%	86%

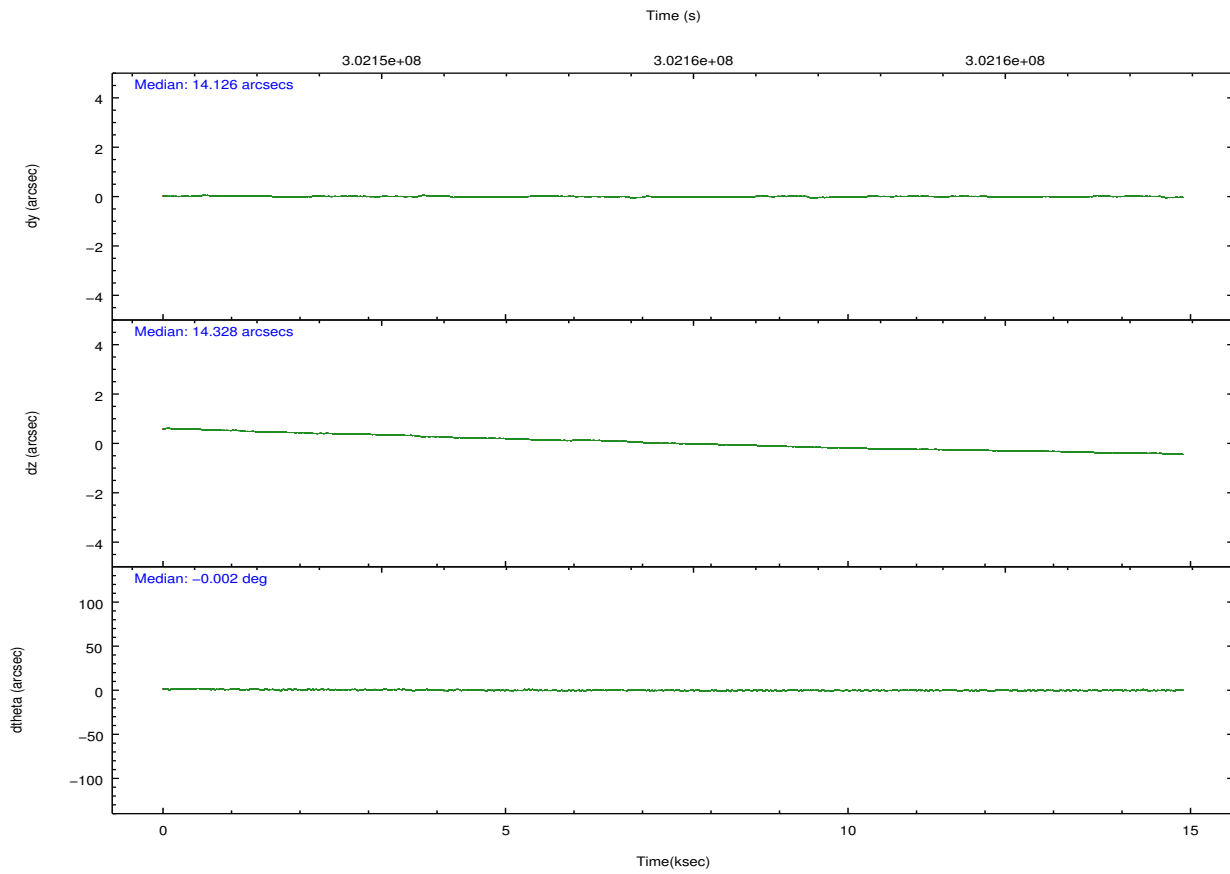
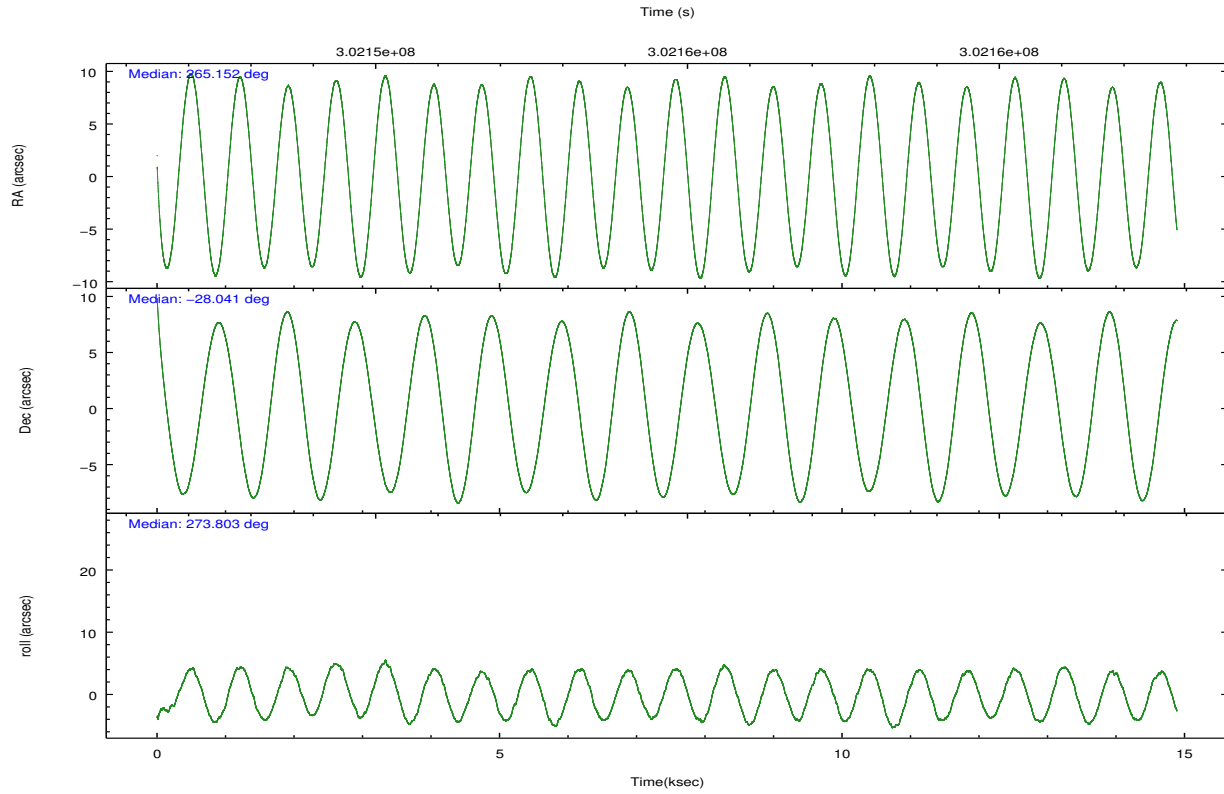
	ccd 0	ccd 1	ccd 2	ccd 3
grade 0 events	8829	8555	9433	8869
	6%	6%	6%	6%
grade 1 events	110	81	100	95
	0%	0%	0%	0%
grade 2 events	4019	4497	3818	3581
	2%	3%	2%	2%
grade 3 events	1738	1731	1674	1624
	1%	1%	1%	1%
grade 4 events	1630	1768	1650	1734
	1%	1%	1%	1%
grade 5 events	5930	6284	5720	6719
	4%	4%	3%	4%
grade 6 events	3080	3680	2836	3048
	2%	2%	1%	2%
grade 7 events	110042	107419	120957	116075
	81%	80%	82%	81%

## 2.2 Compared Parameters

Parameter	Planned	Actual	Parameter	Planned	Actual
Instrument	ACIS	ACIS	Obspar format version number	7	7
Detector	ACIS-0123	ACIS-0123	Obspar file type	PREDICTED	ACTUAL
Grating	NONE	NONE	Obspar update status	NONE	UPDATED
Data mode	VFAINT	VFAINT	Number of optional ACIS chips dropped	0	0
Observation mode	POINTING	POINTING	On-chip summing requested	N	N
[deg] Pointing RA	265.134193	265.1516413649315	Subarray requested	NONE	NONE
[deg] Pointing Dec	-28.018317	-28.0411098066214	Alternating exposures requested	N	N
[deg] Pointing Roll	273.593358	273.8102424189288	[s] Primary exposure time	0.000000	3.1
[mm] SIM focus pos	-0.782348	-0.7809083437167272			
[mm] SIM defocus	0	0.001439871863259334			
[mm] SIM translation stage pos	-233.592463	-233.5874344608287			
[mm] SIM translation stage offset	0	-0.005018542100998502			
[s] Observation start time (MET)	302147421.184000	302146317.92014			
Observation start date	2007-07-30T01:49:16	2007-07-30T01:31:57			
[s] Observation end time (MET)	302162121.184000	302162255.6459			
Observation end date	2007-07-30T05:54:16	2007-07-30T05:57:35			
Read mode	TIMED	TIMED			

## 2.3 Aspect





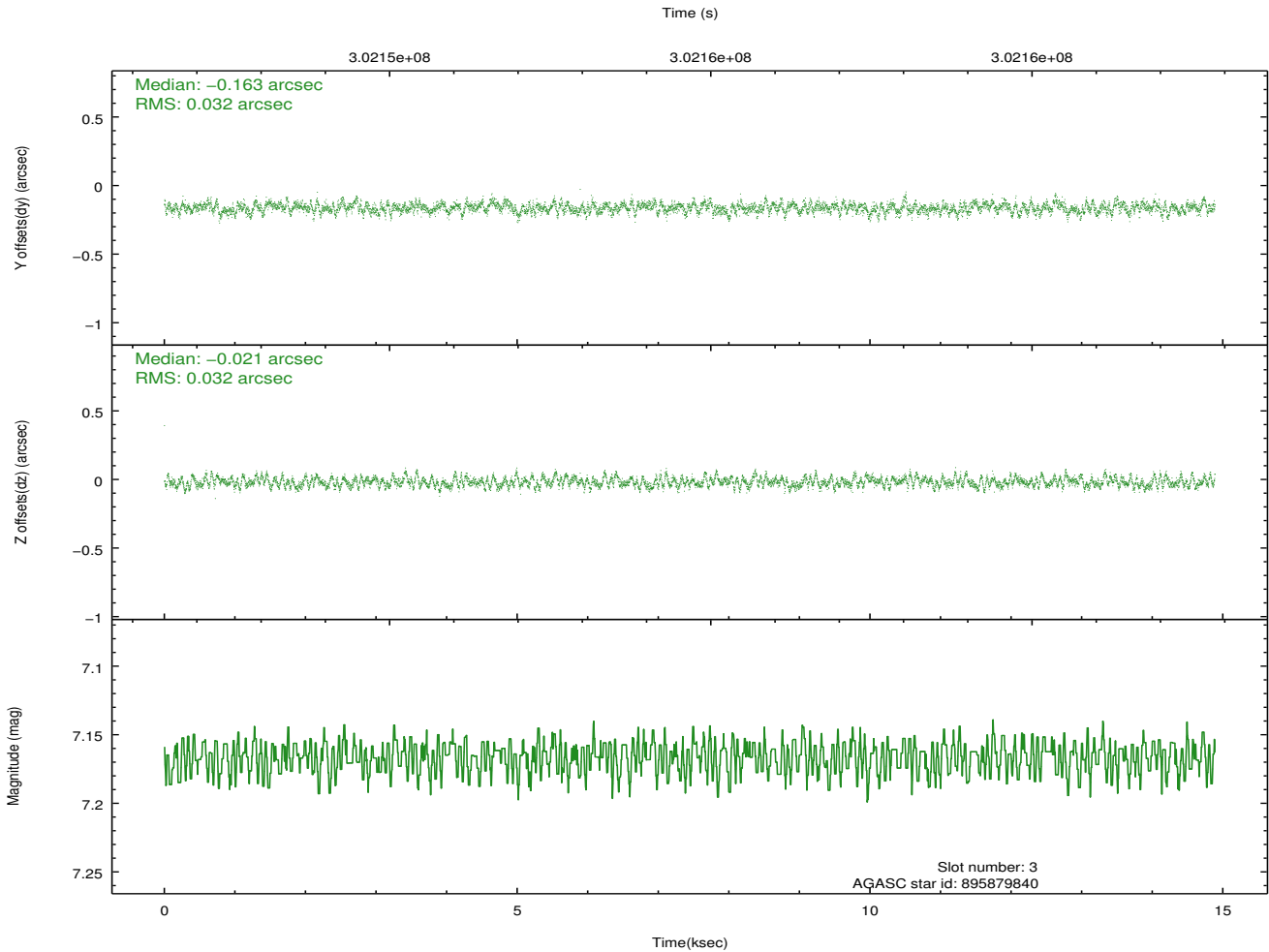
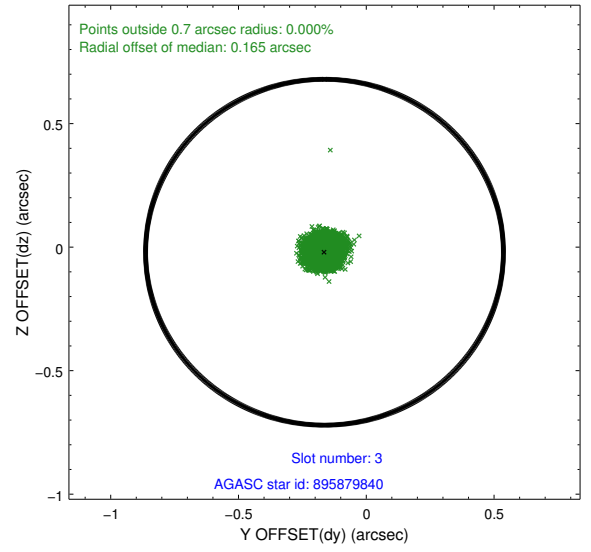
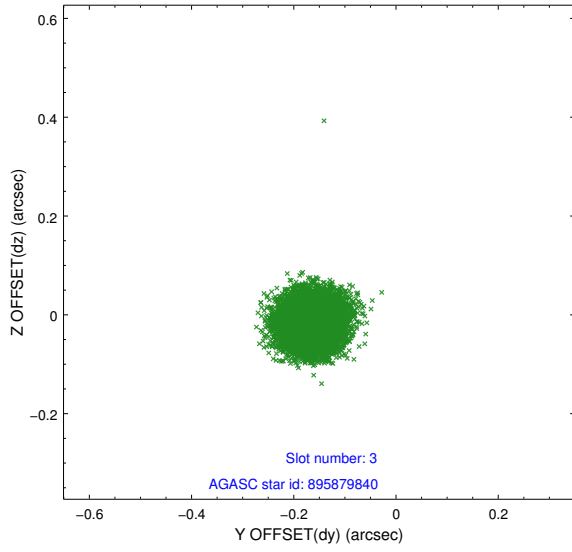
### Slot Statistics

slot	status	id	mag	n_pts	med_dy	med_dz	dr1	dr2	ra	dec	mean_y	mean_z
0	FID	ACIS-I-1	7.23	3632	0.035	0.002	0.011	0.022	0.000000	0.000000	925.40	-837.94
1	FID	ACIS-I-5	7.23	3632	-0.222	0.038	0.007	0.011	0.000000	0.000000	-1822.81	1059.42
2	FID	ACIS-I-6	7.24	3632	0.096	0.032	0.013	0.023	0.000000	0.000000	390.66	1704.28
3	GUIDE	895879840	7.17	7263	-0.163	-0.021	0.049	0.077	265.218397	-27.395778	-2219.66	408.71
4	GUIDE	896402656	8.86	7255	0.078	0.119	0.074	0.118	265.739192	-28.230753	888.08	1867.32
5	GUIDE	896405048	8.27	7261	-0.096	0.026	0.065	0.102	264.482575	-28.152230	357.59	-2094.36
6	GUIDE	896406568	8.26	7257	0.150	-0.095	0.075	0.120	264.435951	-28.437282	1373.93	-2301.09
7	GUIDE	896404568	7.85	7259	0.030	-0.029	0.056	0.091	265.687293	-28.431080	1597.02	1654.19

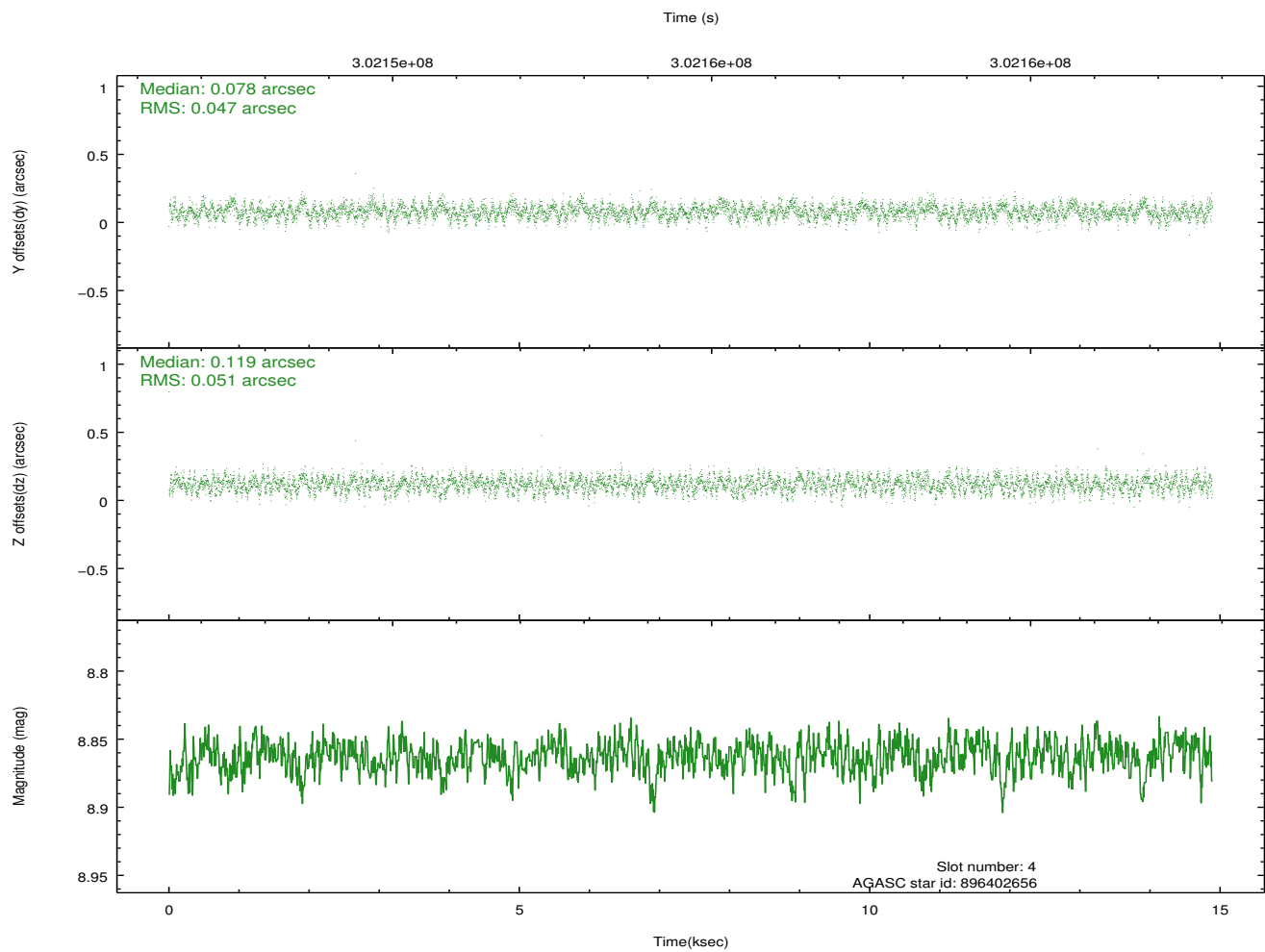
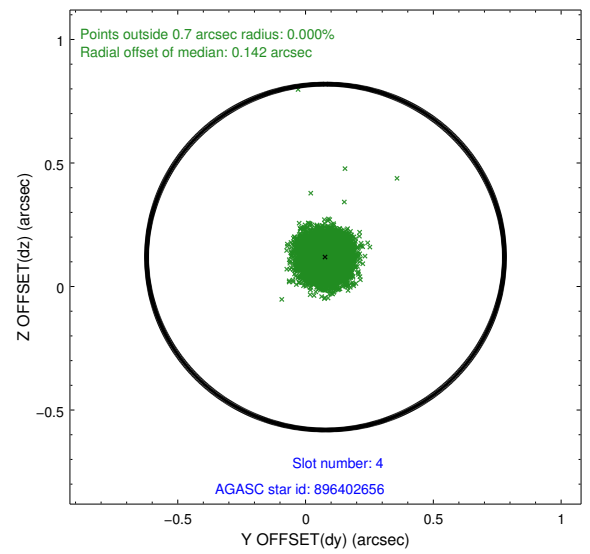
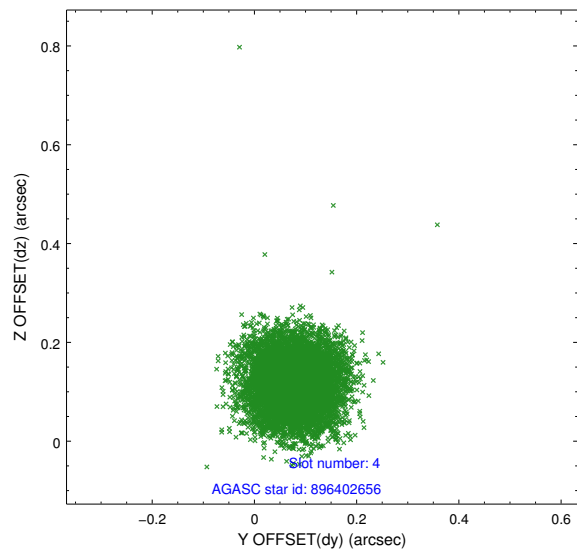
∞

## 2.4 Star Slots

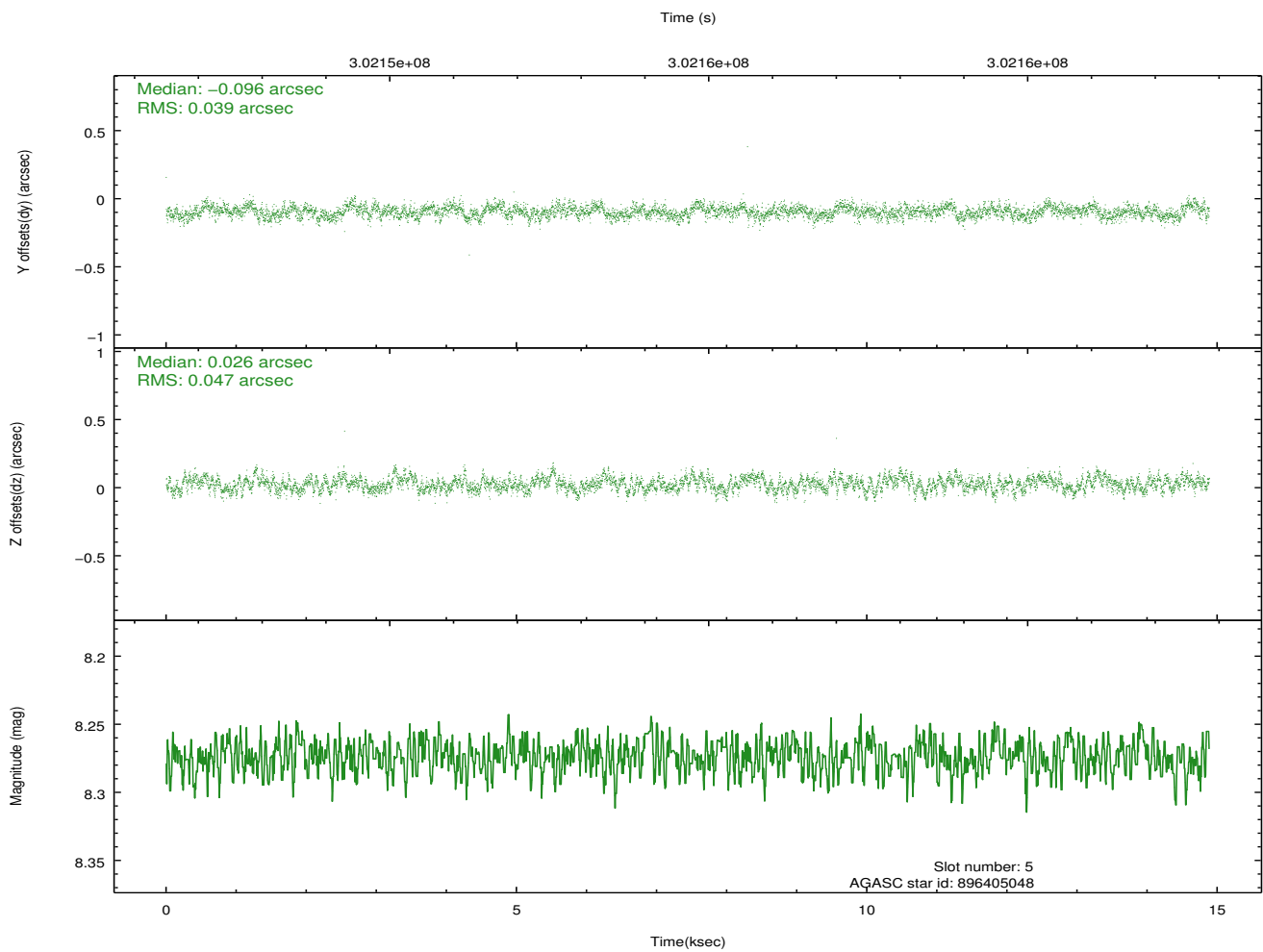
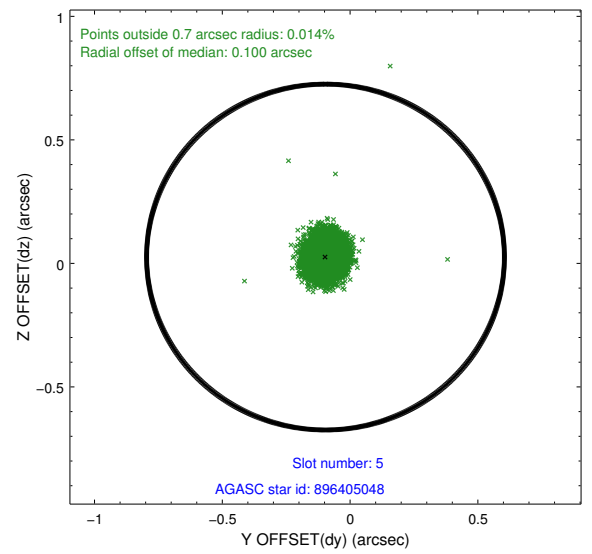
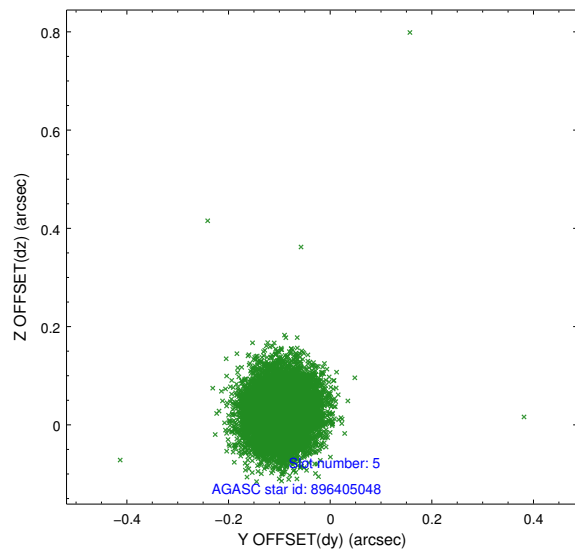
### 2.4.1 Slot 3



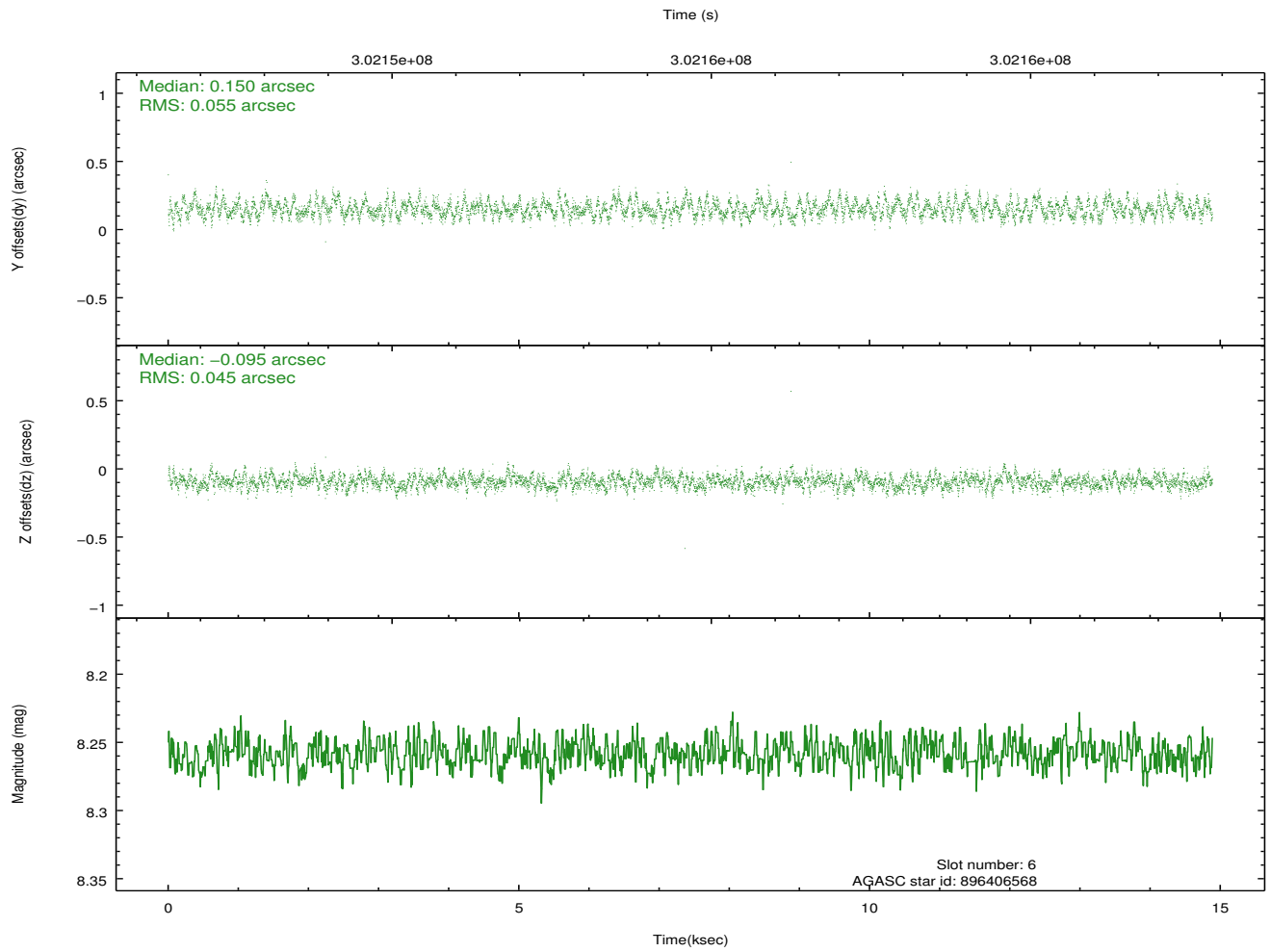
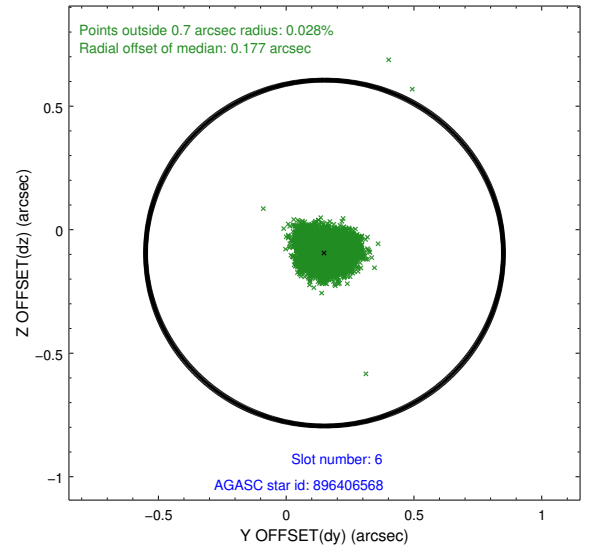
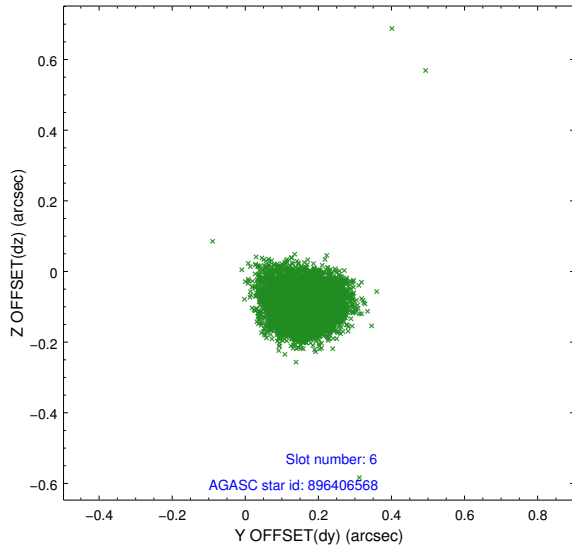
## 2.4.2 Slot 4



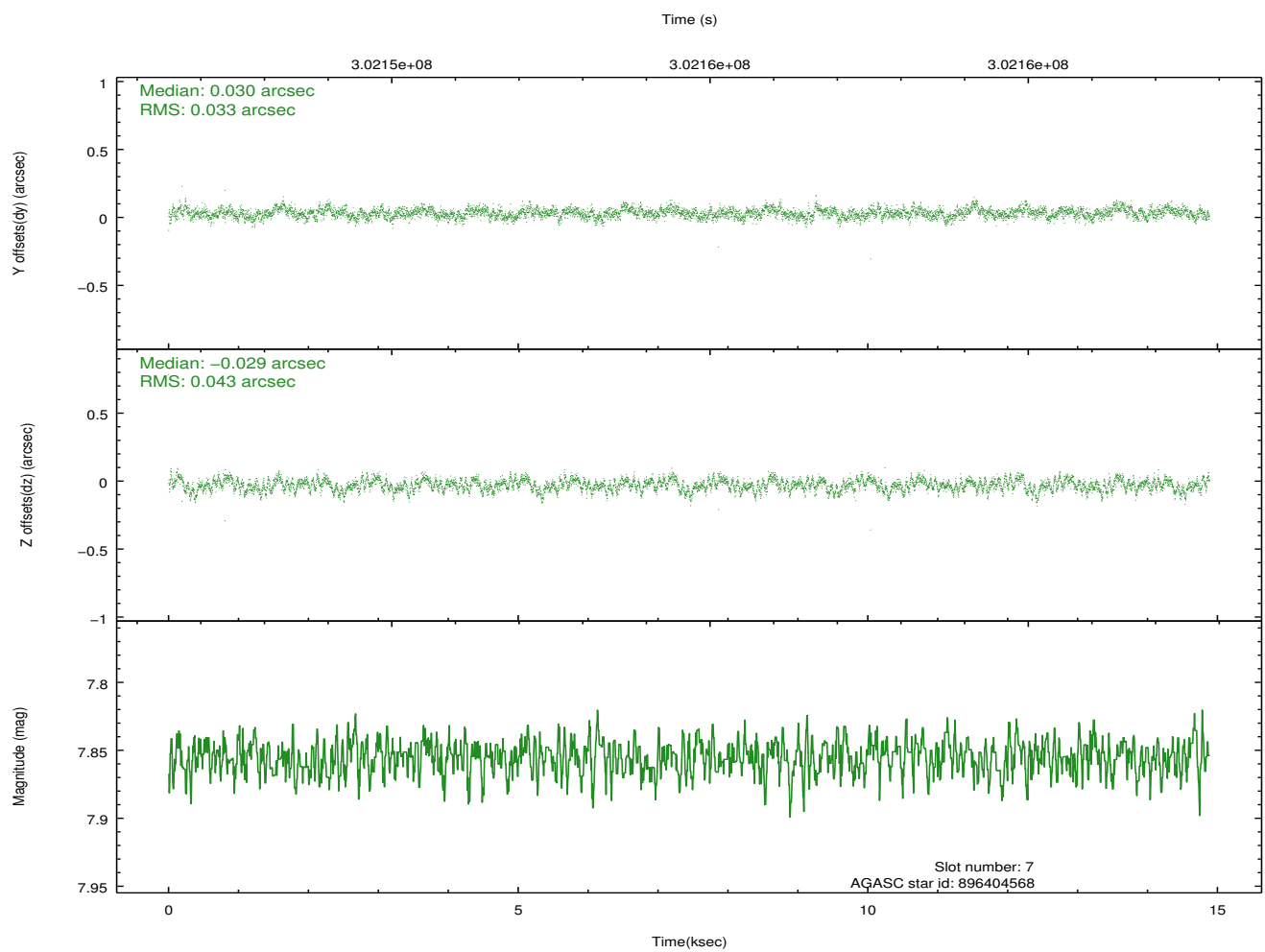
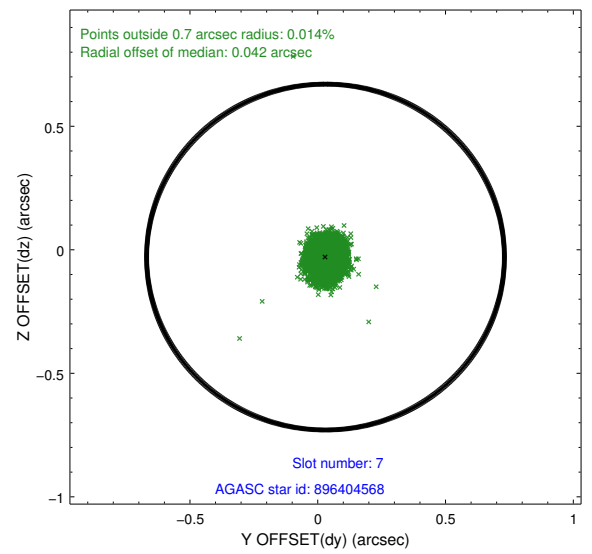
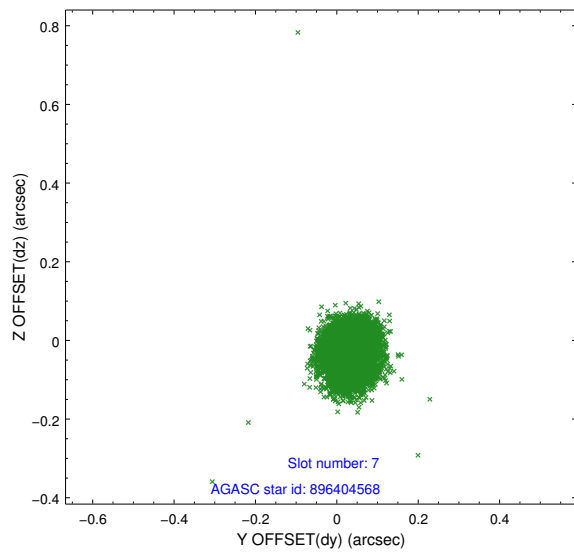
### 2.4.3 Slot 5



### 2.4.4 Slot 6

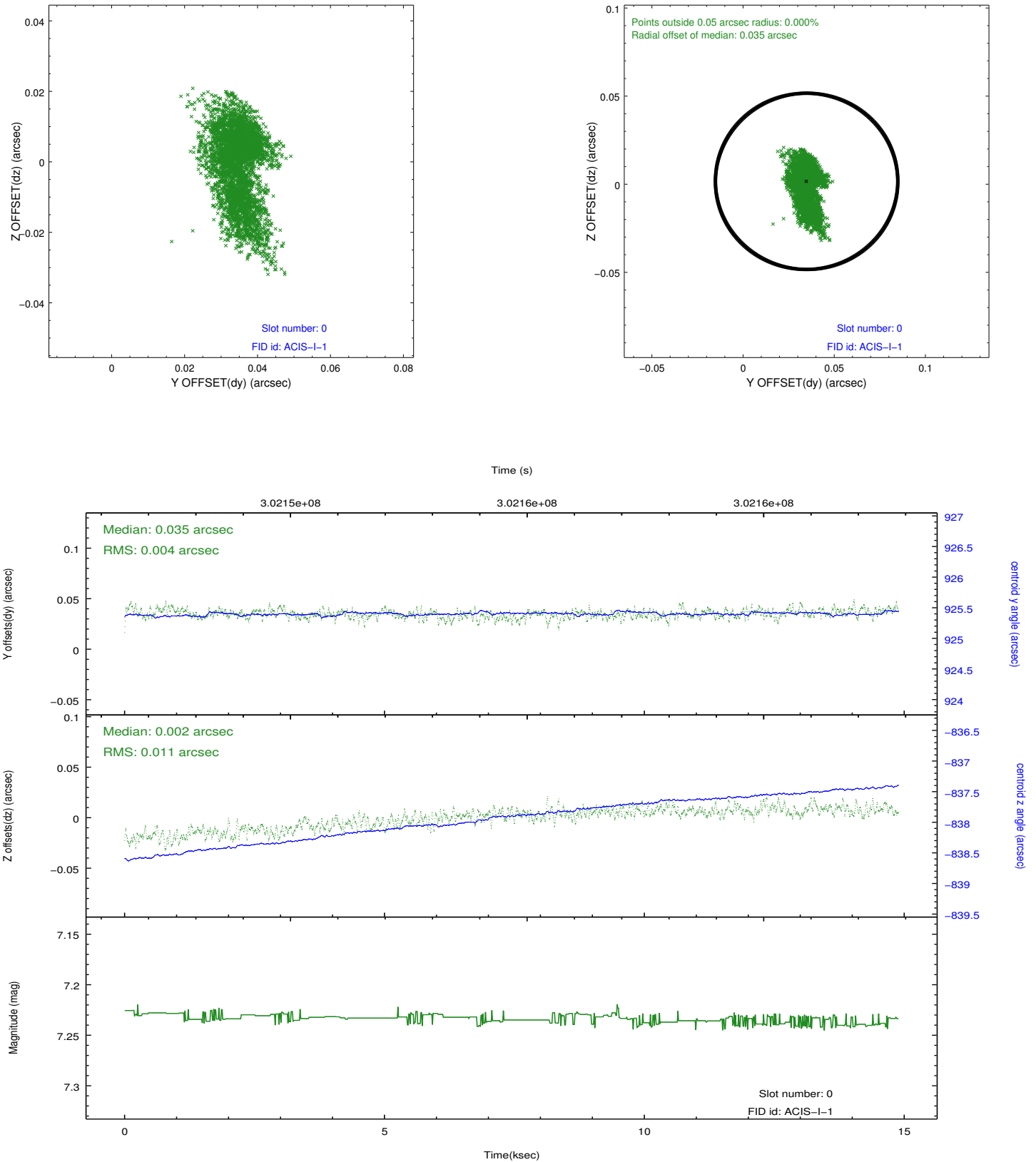


## 2.4.5 Slot 7

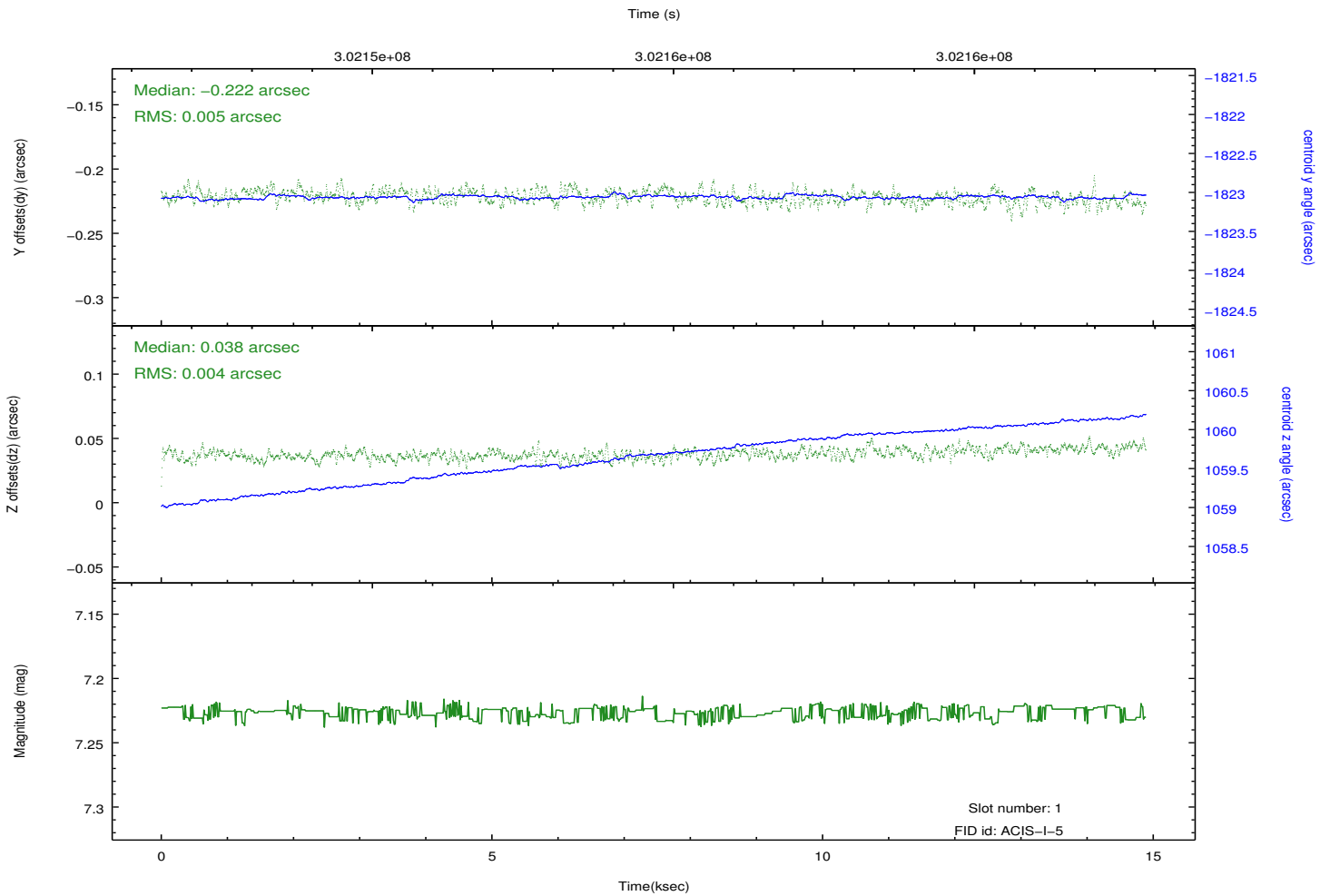
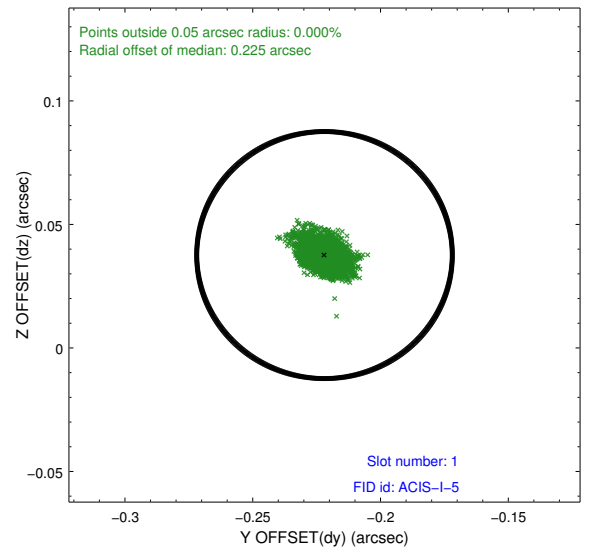
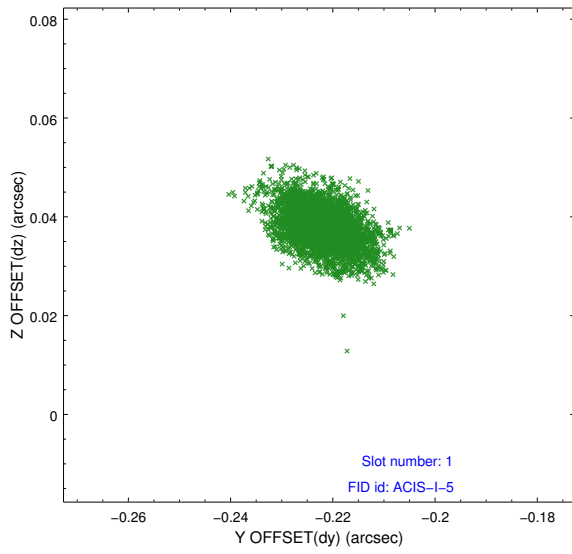


## 2.5 FID Slots

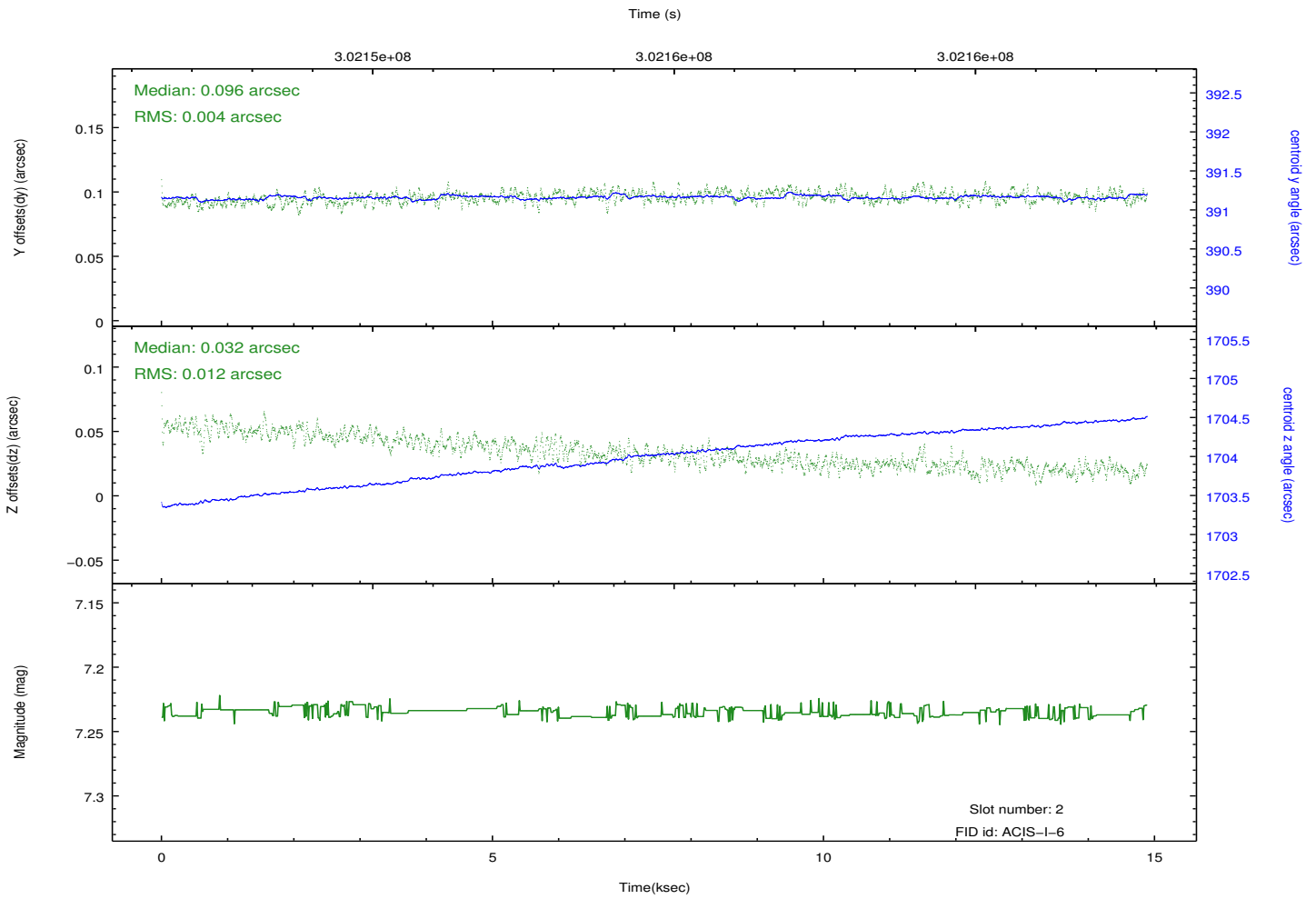
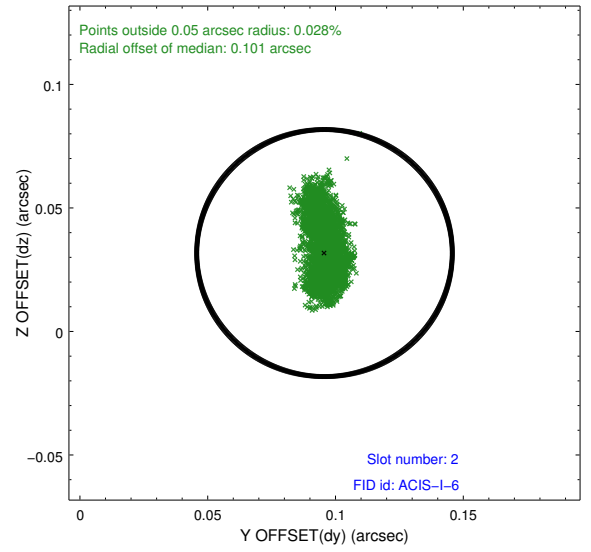
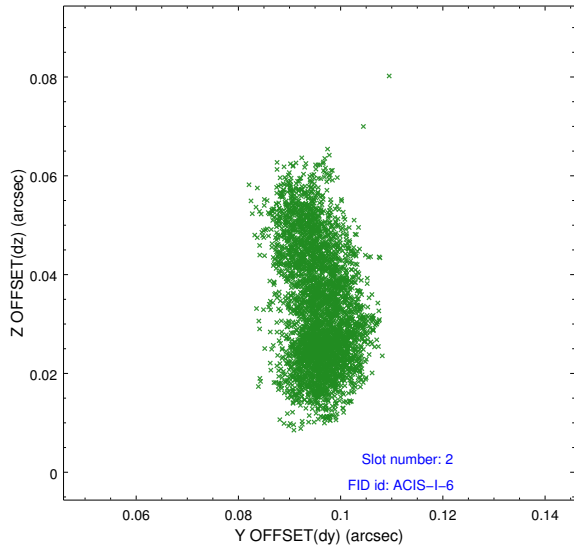
### 2.5.1 Slot 0



## 2.5.2 Slot 1



### 2.5.3 Slot 2



# A Summary

## A.1 Status

V&V Scientist	Jen Lauer
V&V Date (YYYY-MM-DD)	2012.05.01
V&V Edition	1
V&V Disposition and Status	OK
V&V Charge Time	14.8768181

## A.2 Comments

Joint proposal: NOAO Roll preference met.