

V&V Reference Report

L2 ASCDS Version : 8.4.5

Observation 829 - L2 Version 4
Chandra X-Ray Center

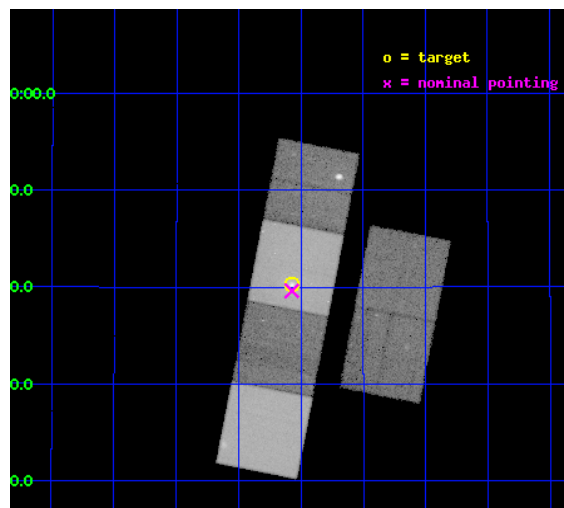
L2 Processing Date : Aug 24 2012

Contents

1	Front	2
2	OBI	3
2.1	OBI	3
2.1.1	Images	3
2.1.2	Bias	3
2.1.3	Parameters	4
2.1.4	Events	4
2.2	Compared Parameters	5
2.3	Aspect	6
2.4	Star Slots	9
2.4.1	Slot 3	9
2.4.2	Slot 4	10
2.4.3	Slot 5	11
2.4.4	Slot 6	12
2.5	FID Slots	13
2.5.1	Slot 0	13
2.5.2	Slot 1	14
2.5.3	Slot 2	15
A	Summary	16
A.1	Status	16
A.2	Comments	16

1 Front

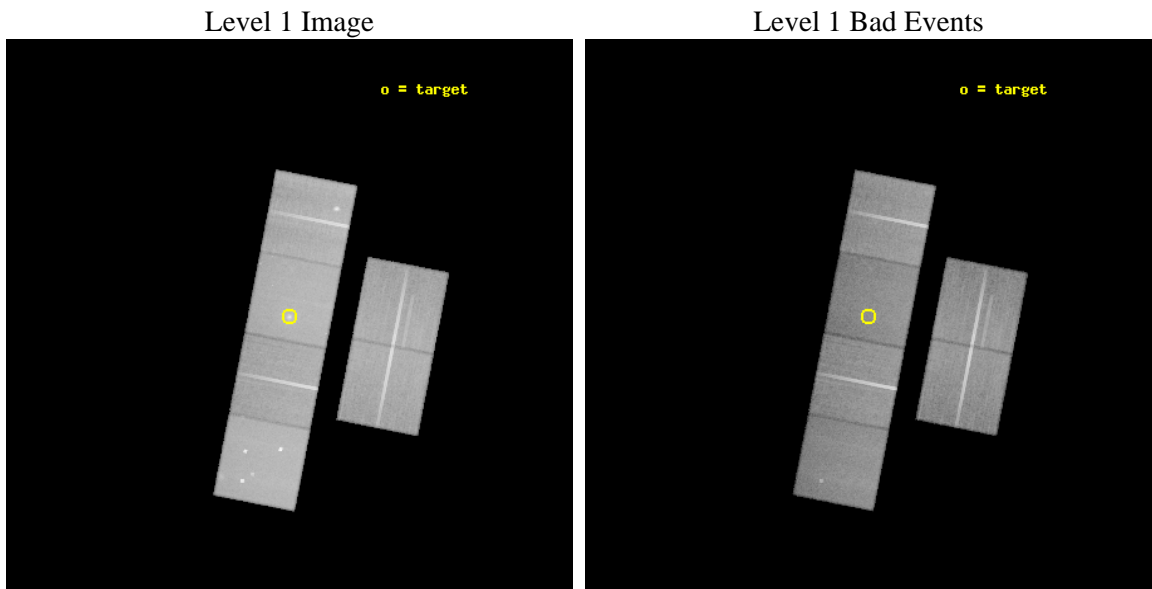
seq_num	700134	Sequence number
obs_id	829	Observation id
title	THE MAGNETIC FIELD STRENGTH IN THE RADIO HOT SPOT OF 3C 123: SYNCHROTRON SELF-COMPTON EMISSION AND EQUIPARTITION	Proposal title
observer	Dr Martin Hardcastle	Principal investigator
object	3C 123	Source name
dtcycle	0	
cycle	P	events from which exps? Prim/Second/Both
ra_targ	69.26821	Observer's specified target RA [deg]
dec_targ	29.6705	Observer's specified target Dec [deg]
ra_nom	69.268285416475	Nominal RA [deg]
dec_nom	29.660429800639	Nominal Dec [deg]
roll_nom	281.03449834811	Nominal Roll [deg]
revision	4	Processing version of data
ontime	47619.159114033	Sum of GTIs [s]
livetime	47016.176648516	Livetime [s]
ontime2	47619.159084097	Sum of GTIs [s]
ontime3	47615.918123856	Sum of GTIs [s]
ontime5	47622.400044337	Sum of GTIs [s]
ontime6	47622.400044337	Sum of GTIs [s]
ontime7	47619.159114033	Sum of GTIs [s]
ontime8	47622.400044337	Sum of GTIs [s]
l2events	557511	Number of level 2 events



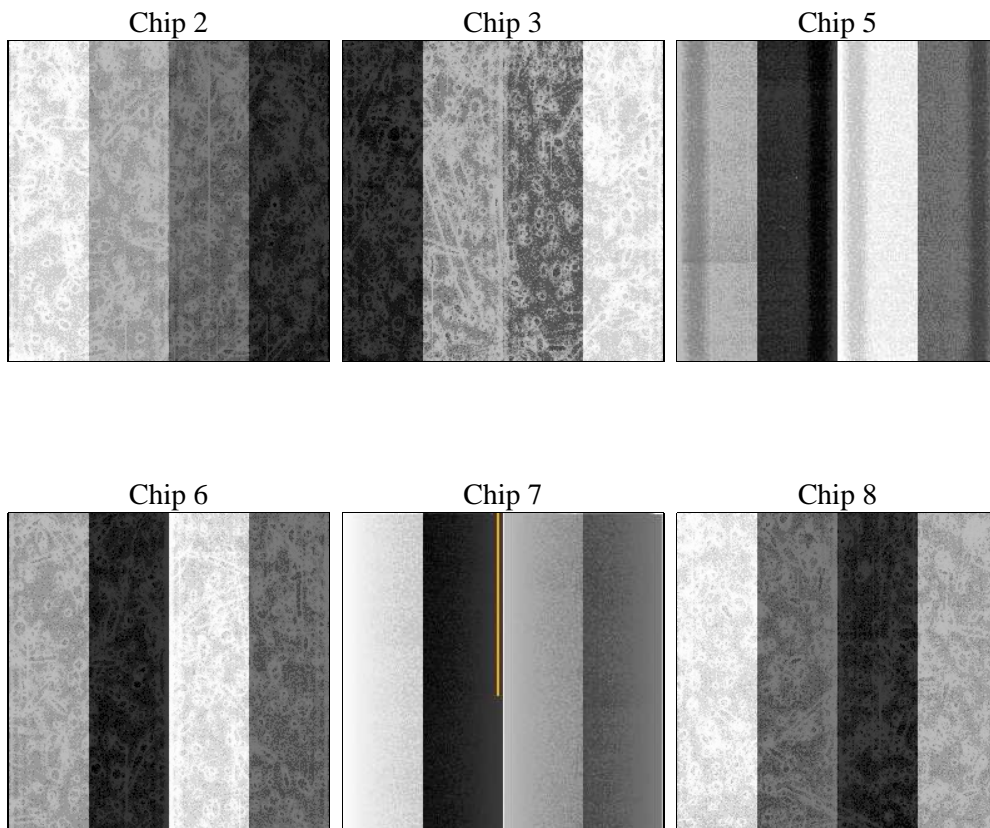
2 OBI

2.1 OBI

2.1.1 Images



2.1.2 Bias



2.1.3 Parameters

obi_num	0	Obi number	sched_exp_time	47500.000000	[s] Scheduled observation exposure time
ascdsver	8.4.5	Processing system revision	ontime	47619.159114033	Sum of GTIs [s]
caldbver	4.5.1.1	 	ontime2	47619.159084097	Sum of GTIs [s]
date	2012-08-24T15:38:42	Date and time of file creation	ontime3	47615.918123856	Sum of GTIs [s]
revision	4	Processing version of data	ontime5	47622.400044337	Sum of GTIs [s]
			ontime6	47622.400044337	Sum of GTIs [s]
			ontime7	47619.159114033	Sum of GTIs [s]
			ontime8	47622.400044337	Sum of GTIs [s]
			l1events	2399180	Number of level 1 events

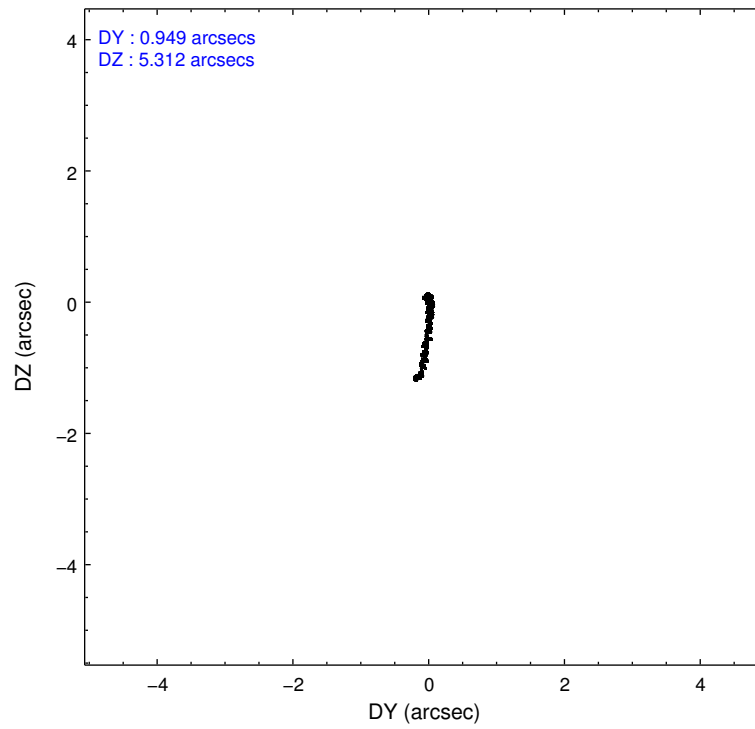
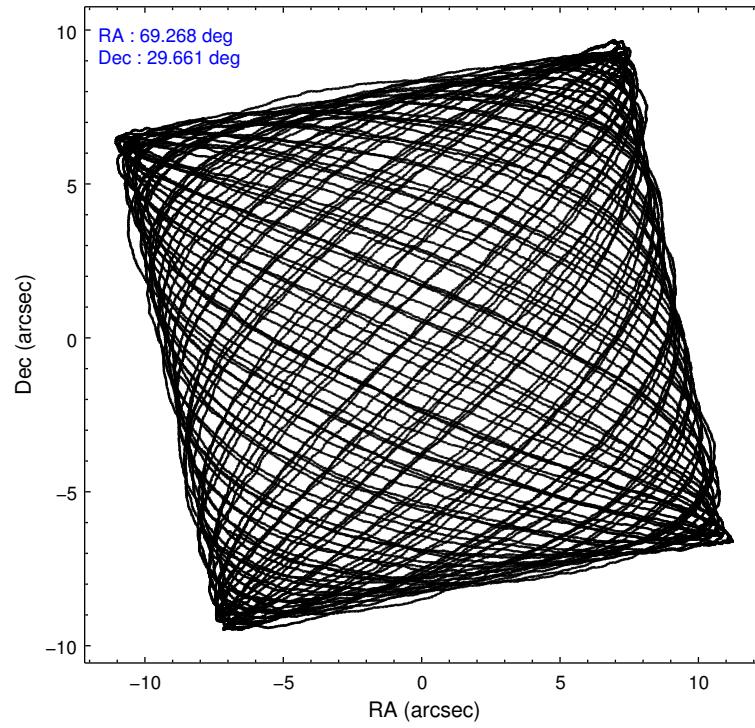
2.1.4 Events

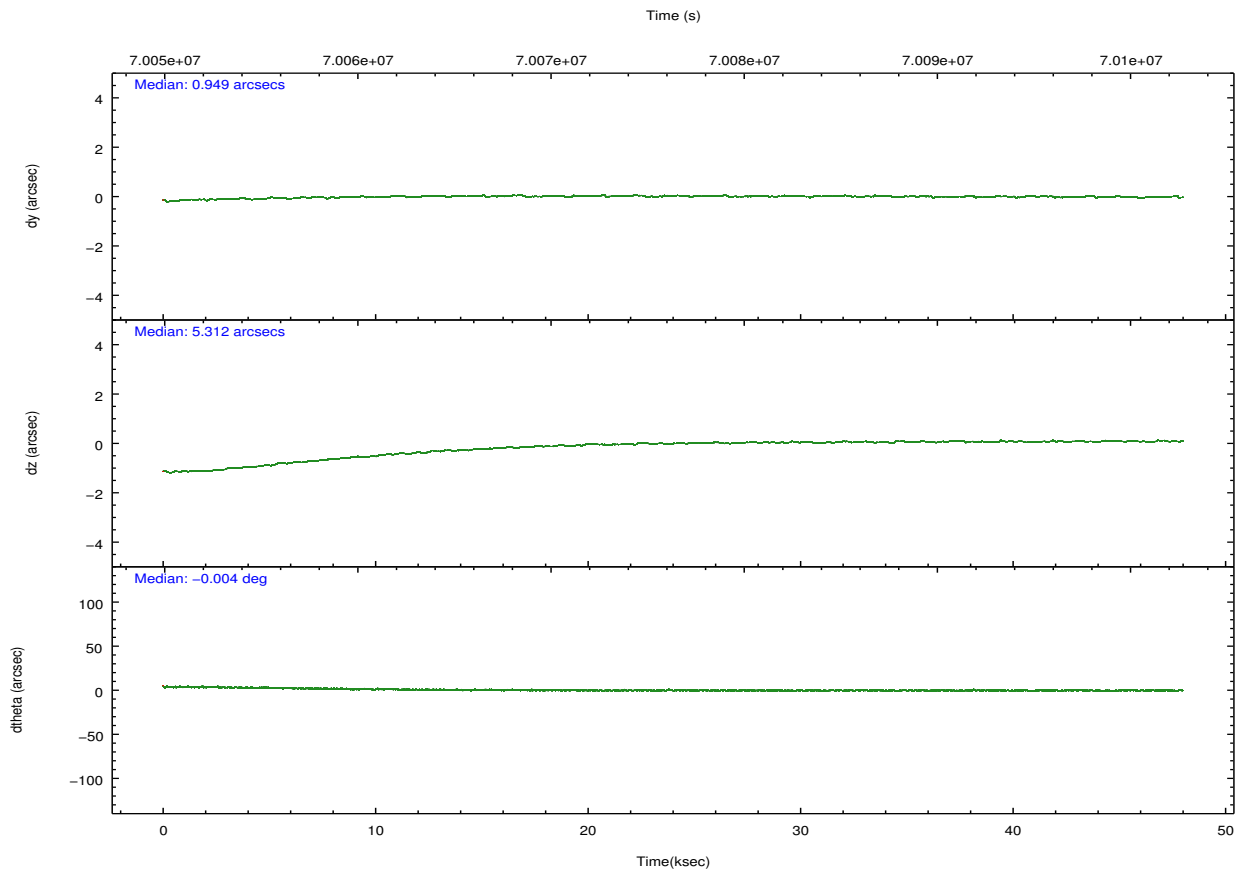
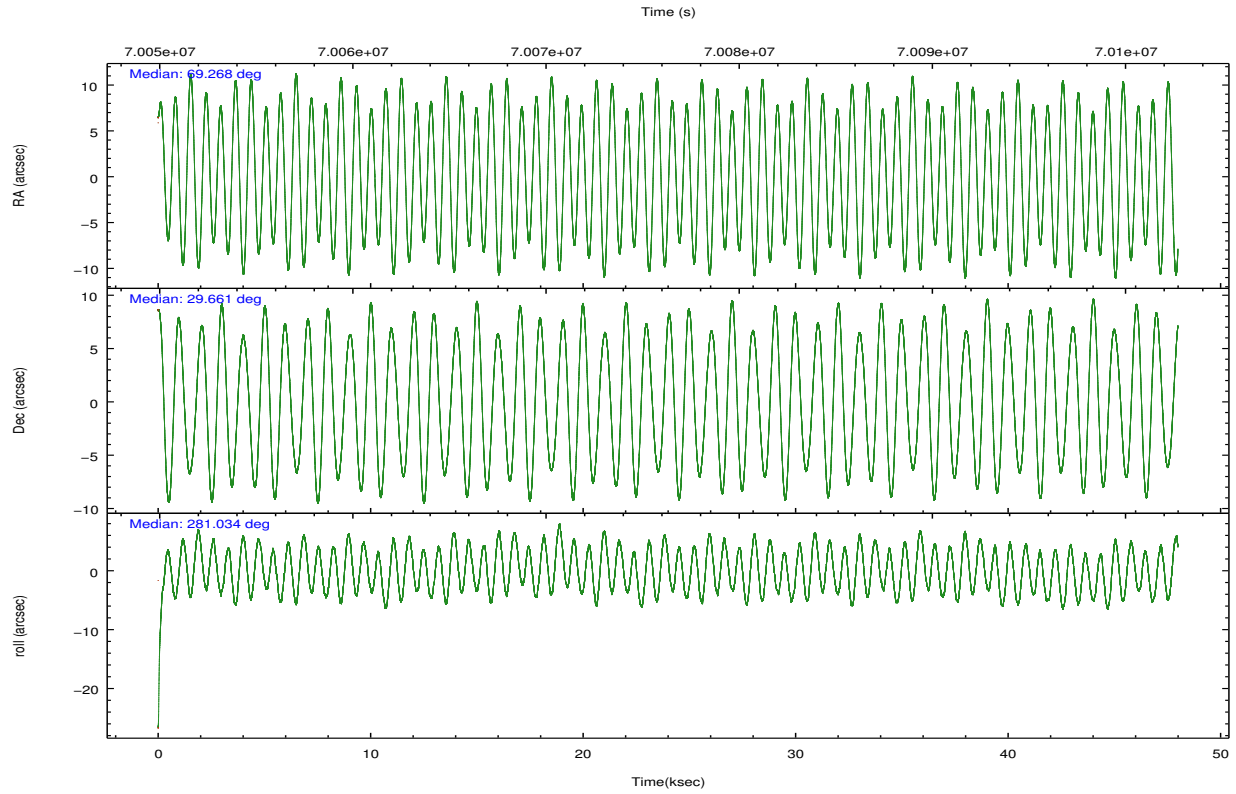
	ccd 2	ccd 3	ccd 5	ccd 6	ccd 7	ccd 8		ccd 2	ccd 3	ccd 5	ccd 6	ccd 7	ccd 8
level 1 events	351604	344982	478688	347271	441751	434884	grade 0 events	14079	14893	34192	15066	25077	30077
rejected events	317165	310363	238356	310592	230575	348477		4%	4%	7%	4%	5%	6%
rejected %	90%	89%	49%	89%	52%	80%	grade 1 events	156	146	550	144	416	271
								0%	0%	0%	0%	0%	0%
							grade 2 events	7313	6784	69972	7131	42800	17630
								2%	1%	14%	2%	9%	4%
							grade 3 events	3459	3509	11303	3760	19773	8993
								0%	1%	2%	1%	4%	2%
							grade 4 events	3499	3486	10962	3767	19568	8348
								0%	1%	2%	1%	4%	1%
							grade 5 events	10341	11045	33916	12495	39019	16009
								2%	3%	7%	3%	8%	3%
							grade 6 events	6093	5951	113919	6962	103979	21365
								1%	1%	23%	2%	23%	4%
							grade 7 events	306664	299168	203874	297946	191119	332191
								87%	86%	42%	85%	43%	76%

2.2 Compared Parameters

Parameter	Planned	Actual	Parameter	Planned	Actual
Instrument	ACIS	ACIS	Obspar format version number	7	7
Detector	ACIS-235678	ACIS-235678	Obspar file type	PREDICTED	ACTUAL
Grating	NONE	NONE	Obspar update status	NONE	UPDATED
Data mode	FAINT	FAINT	Number of optional ACIS chips dropped	0	0
Observation mode	POINTING	POINTING	On-chip summing requested	N	N
[deg] Pointing RA	69.247499	69.26828541647528	Subarray requested	NONE	NONE
[deg] Pointing Dec	29.681128	29.66042980063914	Alternating exposures requested	N	N
[deg] Pointing Roll	280.888160	281.0344983481061	[s] Primary exposure time	0.000000	3.2
[mm] SIM focus pos	-0.684267	-0.6828225247311905			
[mm] SIM defocus	0	0.001444936568705701			
[mm] SIM translation stage pos	-190.132523	-190.1425803651734			
[mm] SIM translation stage offset	0	0.01005778216563158			
[s] Observation start time (MET)	70052811.184000	70051617.331029			
Observation start date	2000-03-21T19:05:47	2000-03-21T18:46:57			
[s] Observation end time (MET)	70100311.184000	70102040.67037199			
Observation end date	2000-03-22T08:17:27	2000-03-22T08:47:20			
Read mode	TIMED	TIMED			

2.3 Aspect



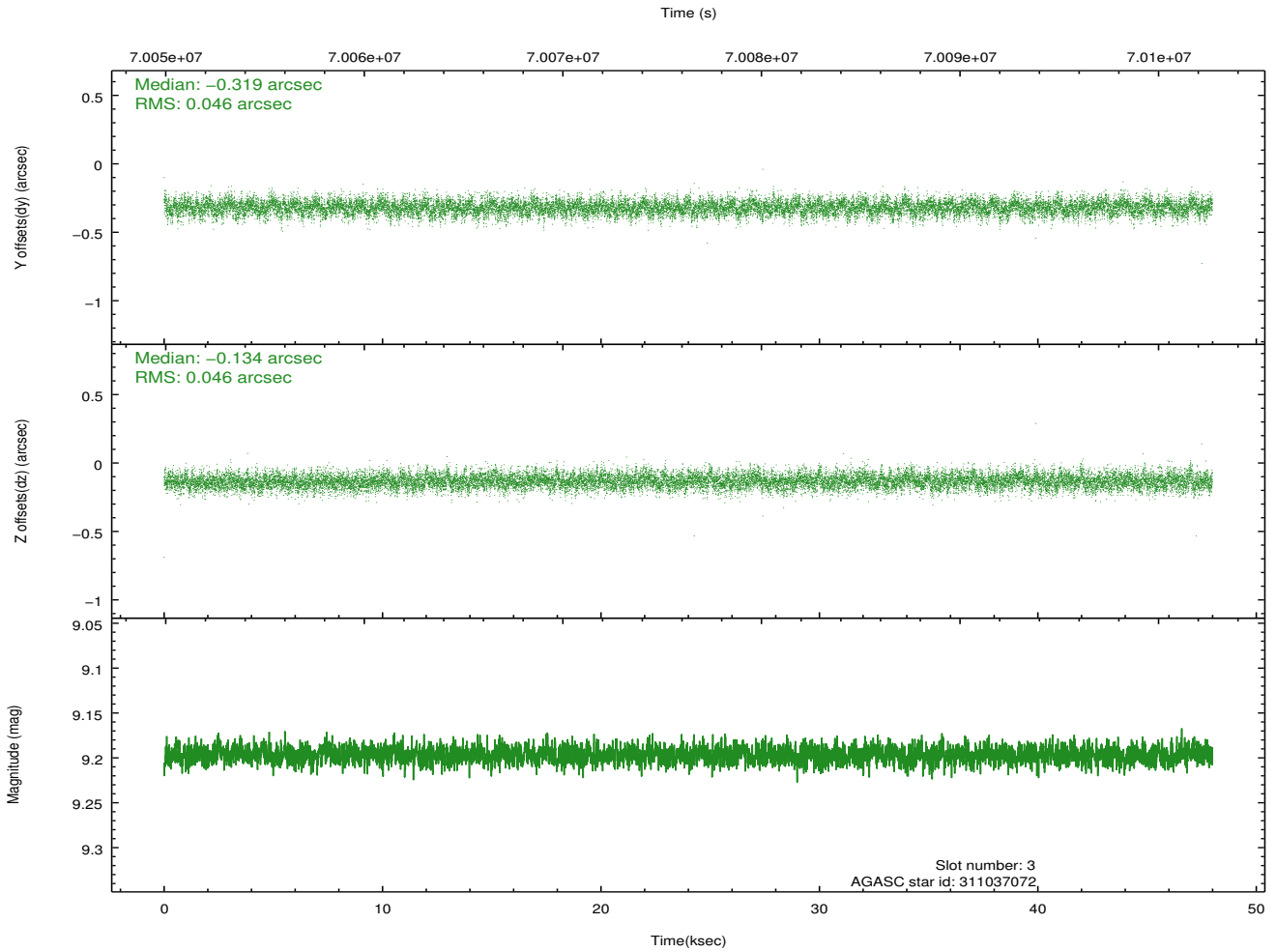
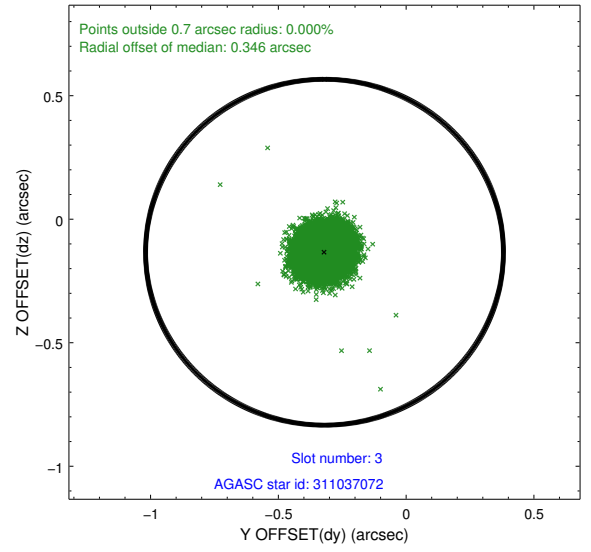
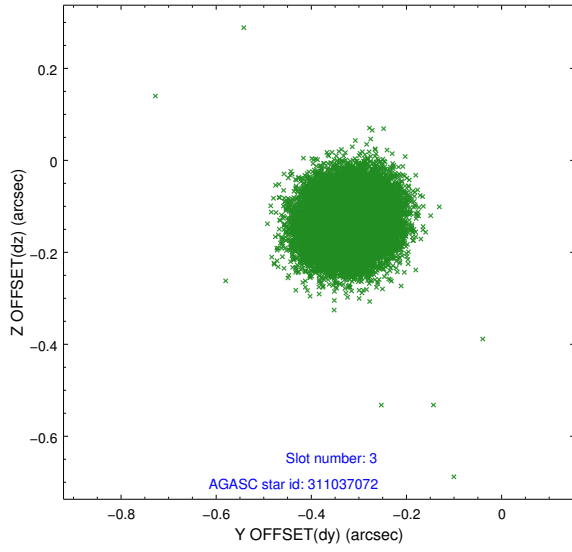


Slot Statistics

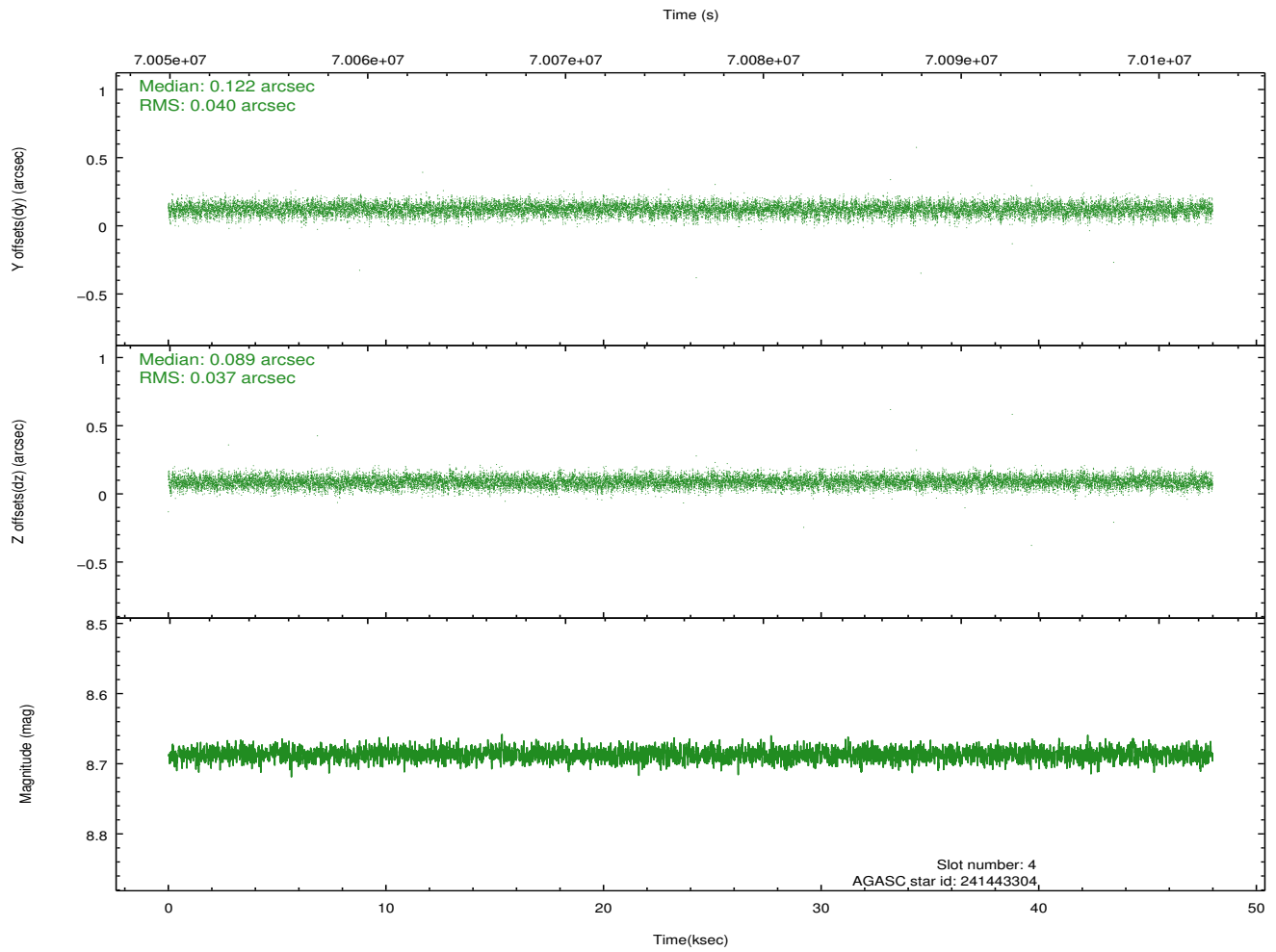
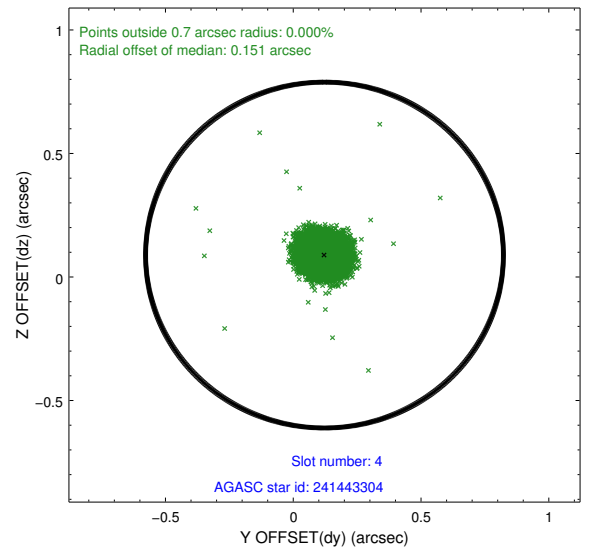
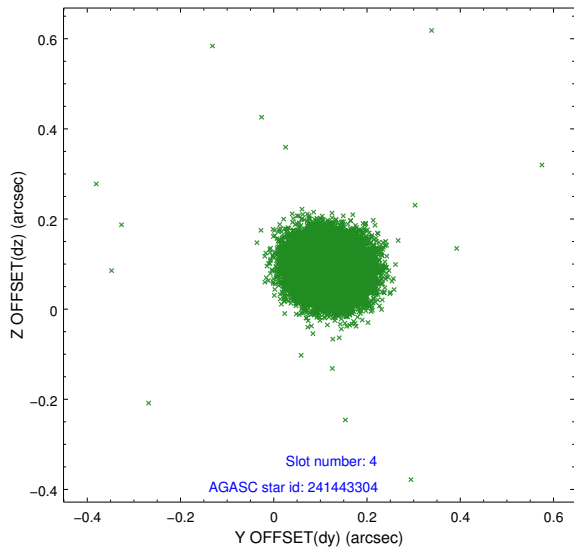
slot	status	id	mag	n_pts	med_dy	med_dz	dr1	dr2	ra	dec	mean_y	mean_z
0	FID	ACIS-S-2	7.11	11701	-0.035	-0.002	0.009	0.020	0.000000	0.000000	-753.56	-1726.17
1	FID	ACIS-S-4	7.21	11702	0.012	0.017	0.006	0.011	0.000000	0.000000	2159.77	182.34
2	FID	ACIS-S-5	7.23	11704	-0.008	-0.007	0.010	0.025	0.000000	0.000000	-1806.39	175.98
3	GUIDE	311037072	9.20	23394	-0.319	-0.134	0.069	0.113	68.429309	30.213468	-2371.11	-2136.22
4	GUIDE	241443304	8.69	23396	0.122	0.089	0.057	0.092	69.608317	29.387359	1251.47	911.91
5	GUIDE	241443104	9.21	23399	0.223	0.137	0.077	0.123	69.284807	29.137459	1945.26	-254.41
6	GUIDE	241306232	9.46	23393	-0.026	-0.091	0.080	0.130	68.800516	29.854628	-878.67	-1252.22
7	UNUSED		0.00	0	0.000	0.000	0.000	0.000	0.000000	0.000000	0.00	0.00

2.4 Star Slots

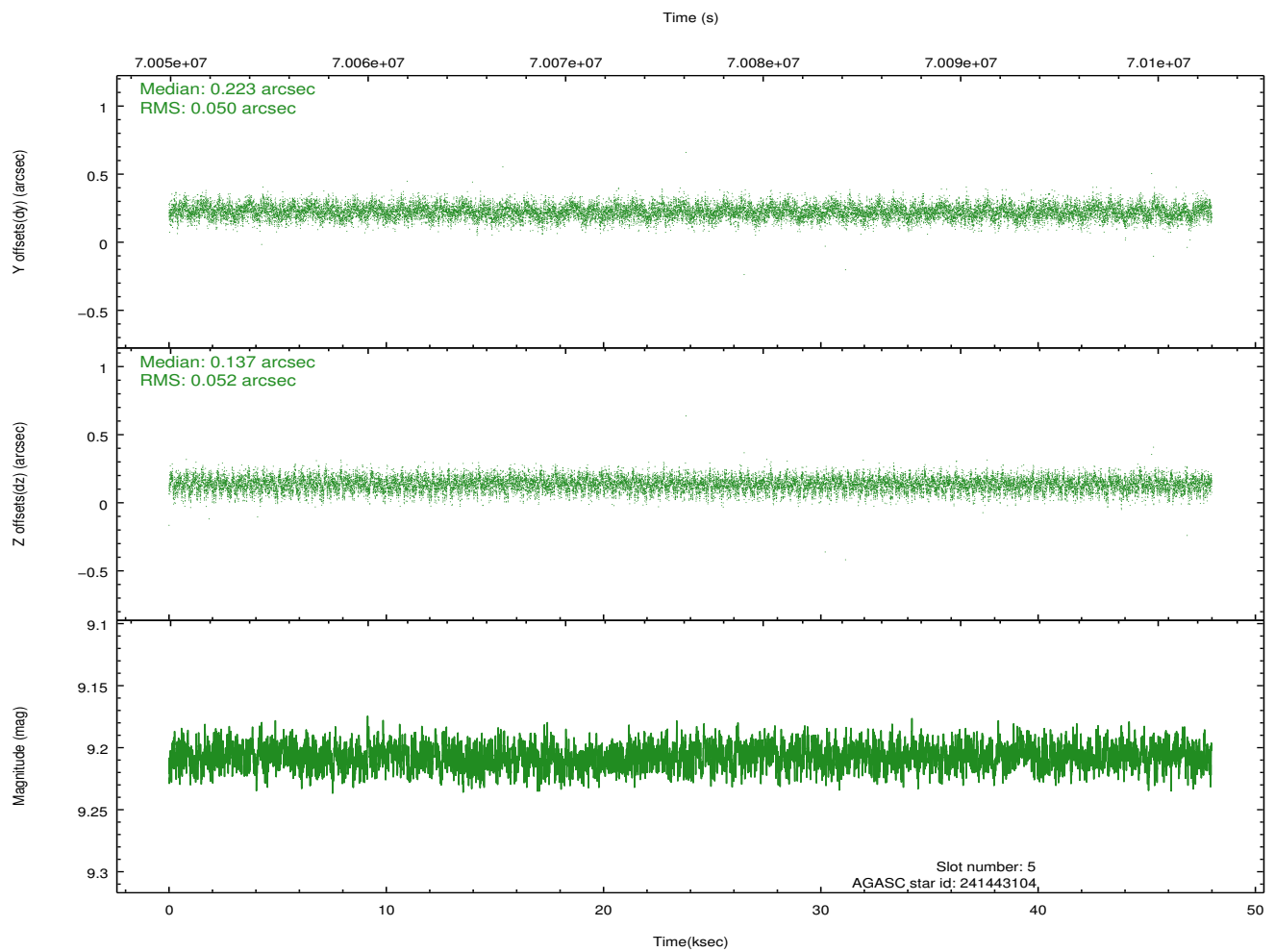
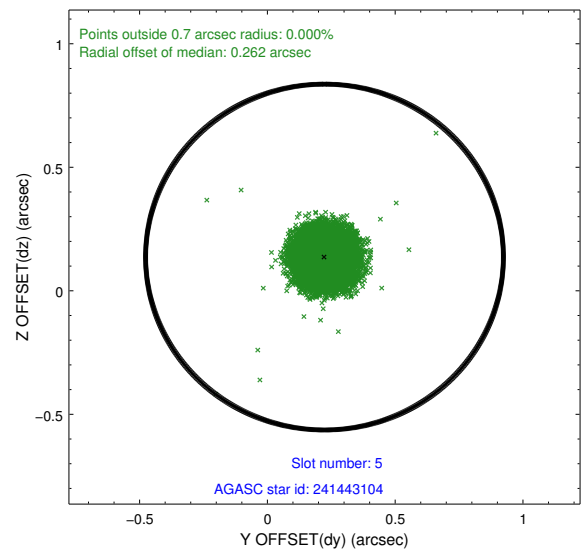
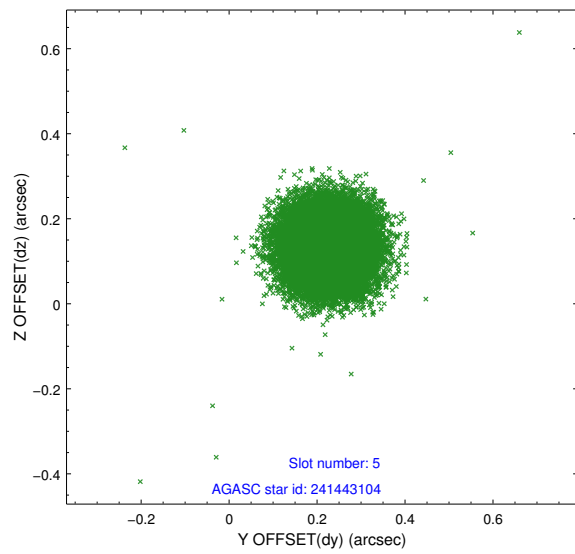
2.4.1 Slot 3



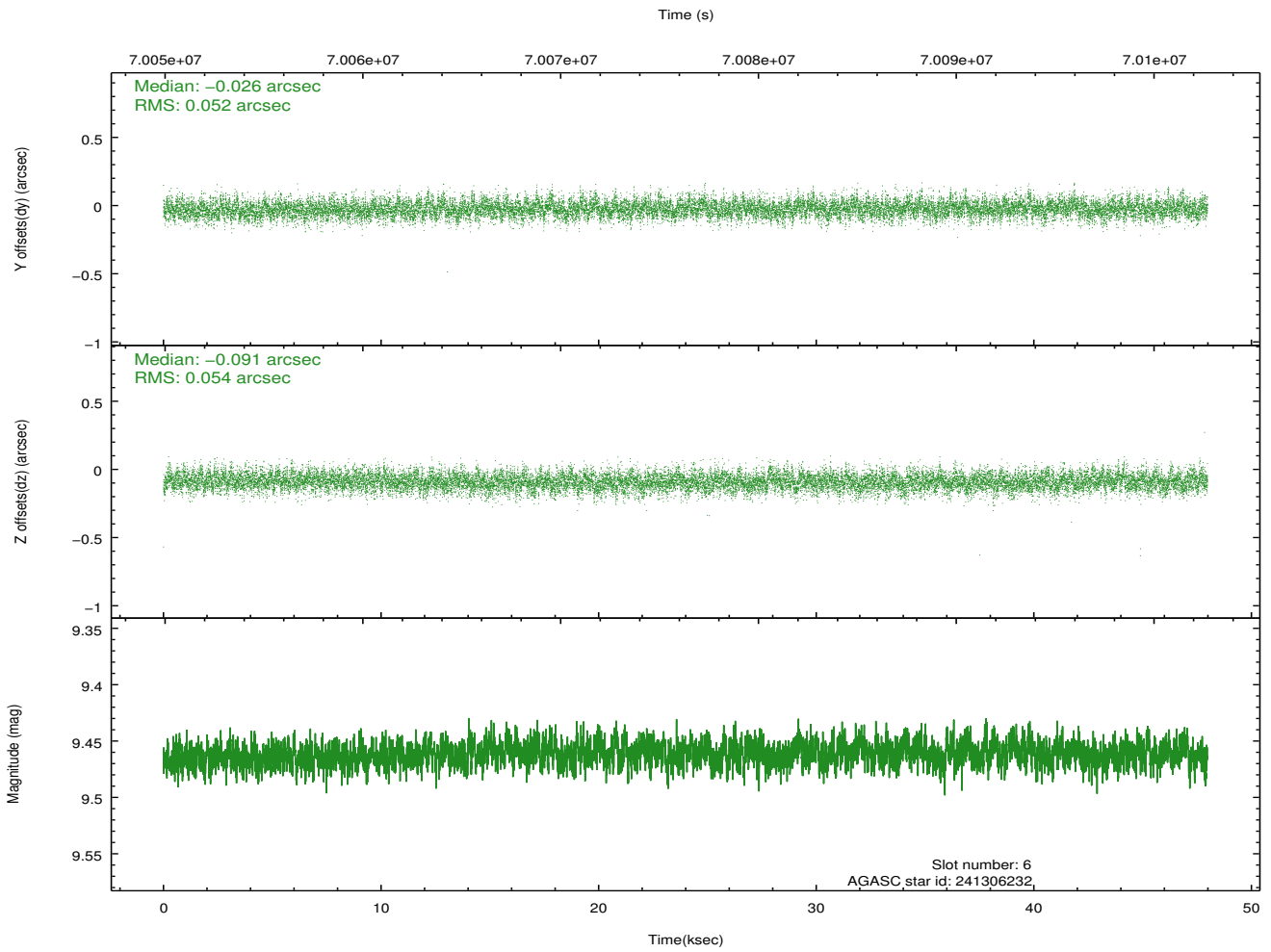
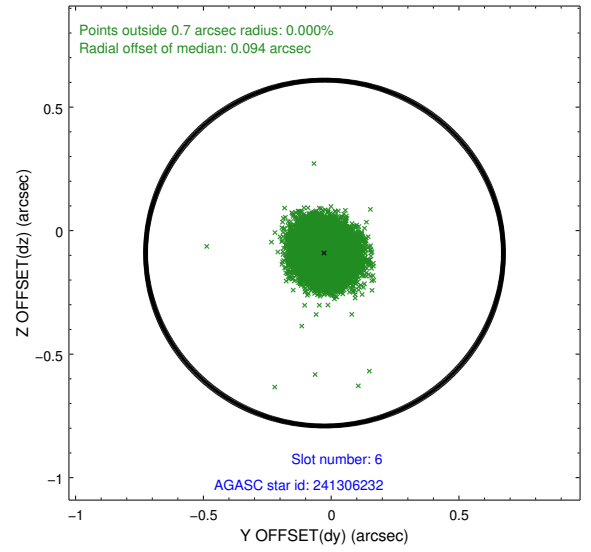
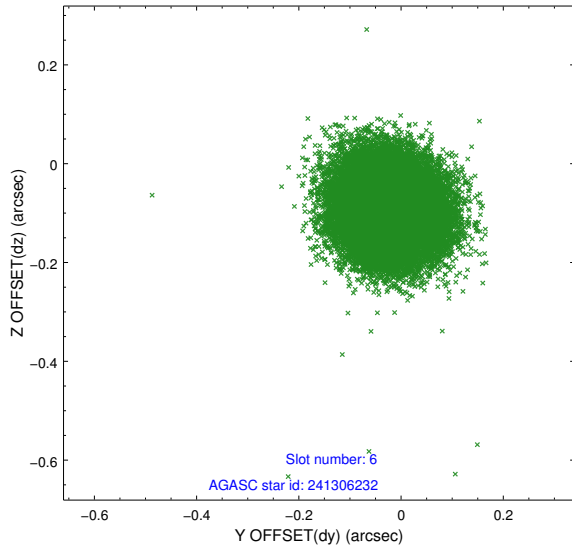
2.4.2 Slot 4



2.4.3 Slot 5

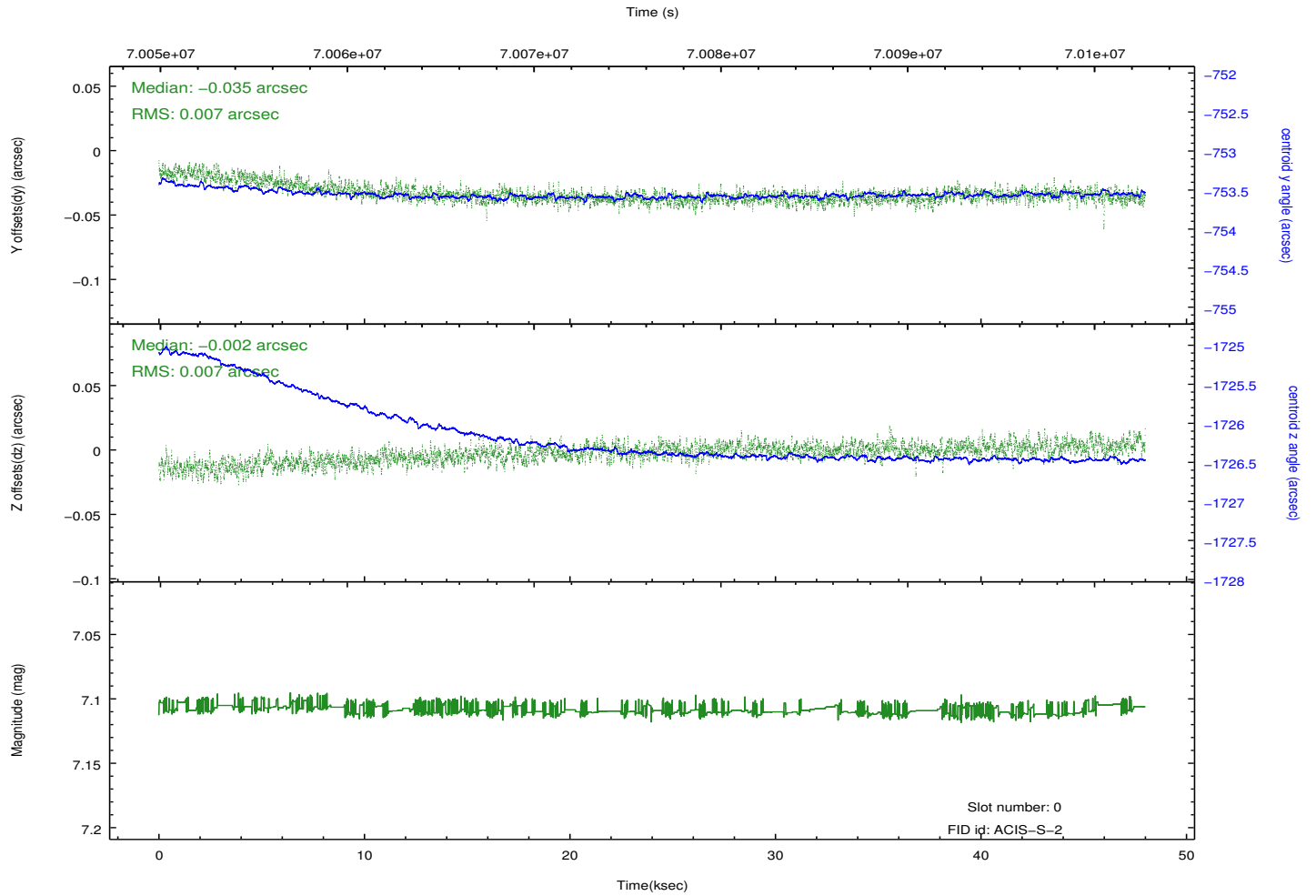
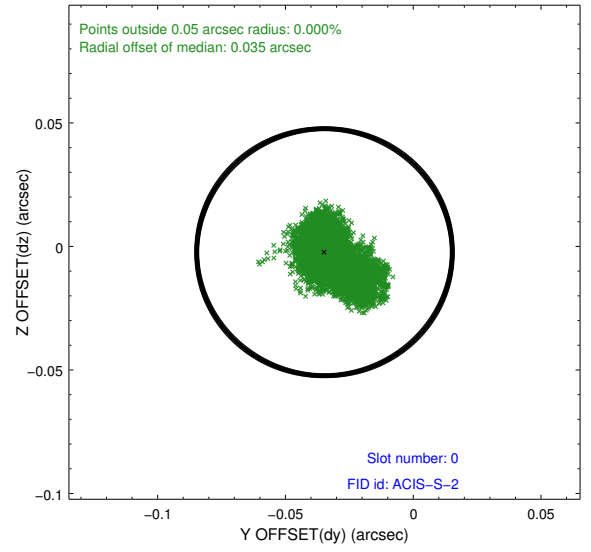
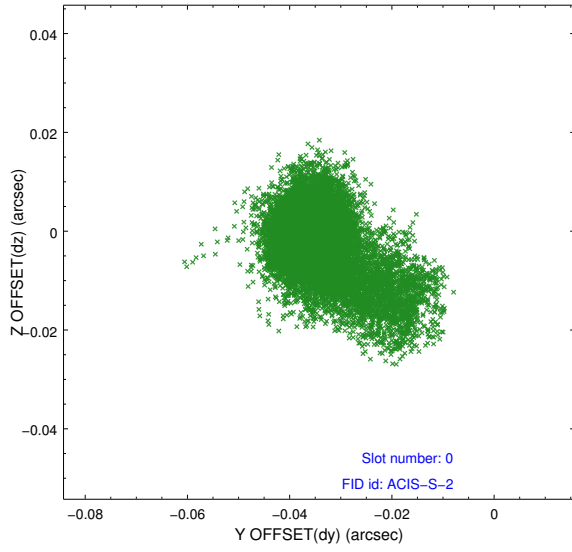


2.4.4 Slot 6

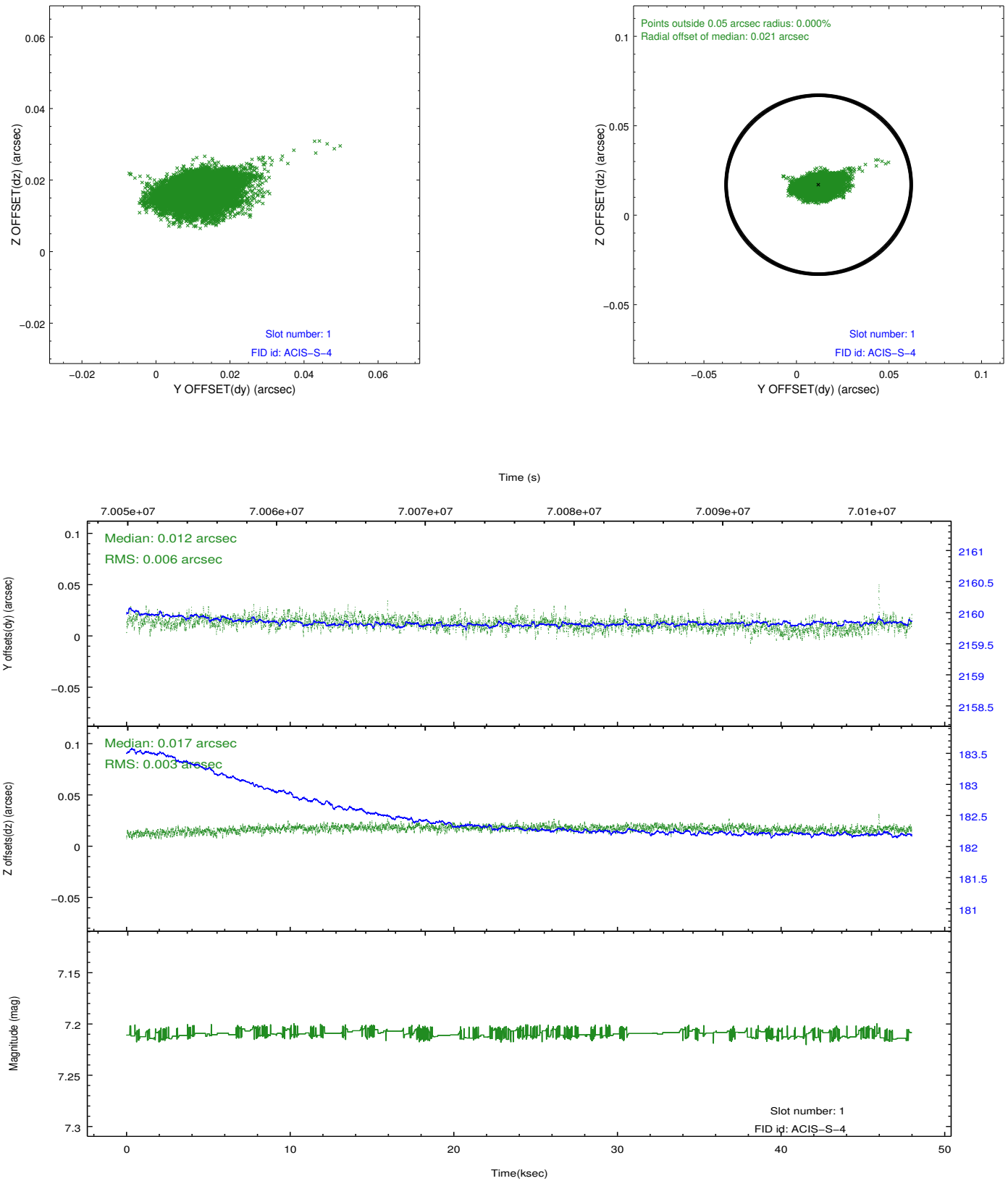


2.5 FID Slots

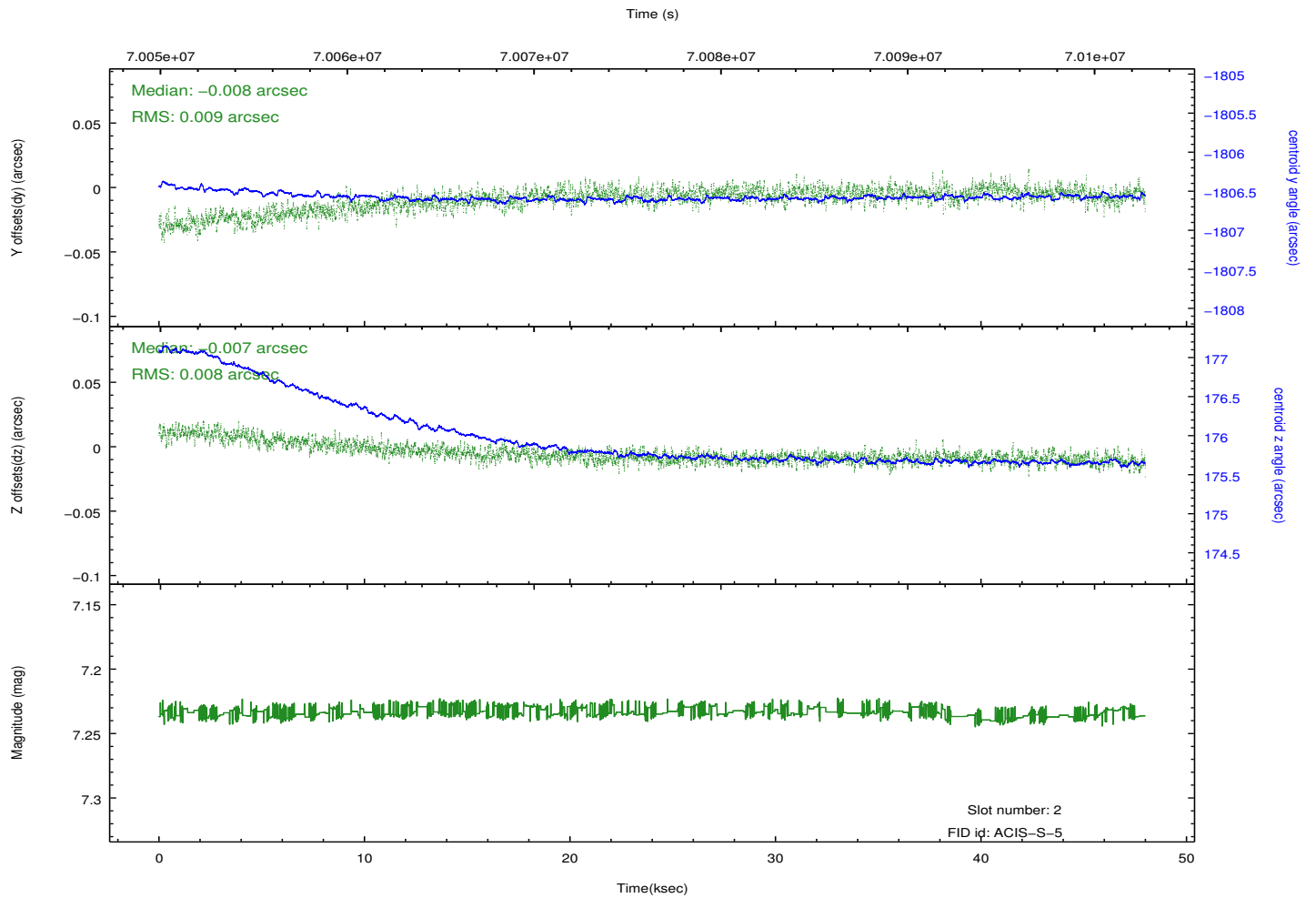
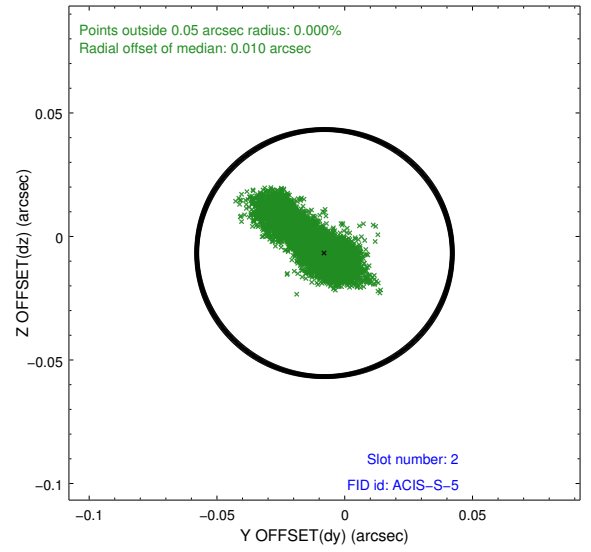
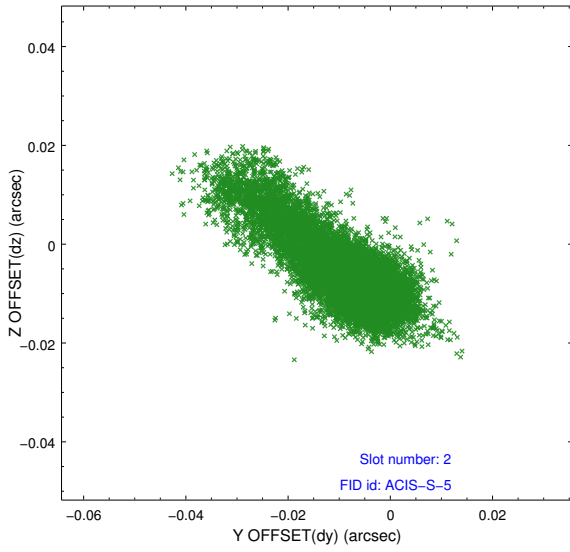
2.5.1 Slot 0



2.5.2 Slot 1



2.5.3 Slot 2



A Summary

A.1 Status

V&V Scientist	Jen Lauer
V&V Date (YYYY-MM-DD)	2012.08.28
V&V Edition	1
V&V Disposition and Status	OK
V&V Charge Time	47.619

A.2 Comments