

V&V Reference Report

L2 ASCDS Version : 8.4.4

Observation 8379 - L2 Version 5
Chandra X-Ray Center

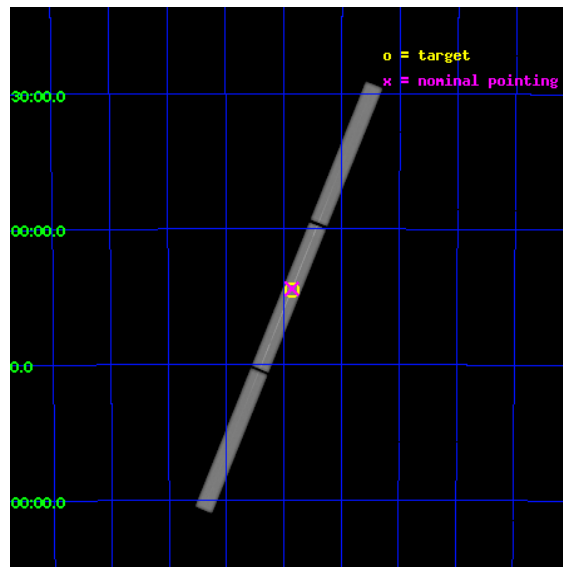
L2 Processing Date : Aug 11 2012

Contents

1	Front	2
2	OBI	3
2.1	OBI	3
2.1.1	Images	3
2.1.2	Parameters	4
2.1.3	Events	4
2.2	Compared Parameters	5
2.3	Aspect	6
2.4	Star Slots	9
2.4.1	Slot 3	9
2.4.2	Slot 4	10
2.4.3	Slot 5	11
2.4.4	Slot 6	12
2.4.5	Slot 7	13
2.5	FID Slots	14
2.5.1	Slot 0	14
2.5.2	Slot 1	15
2.5.3	Slot 2	16
3	Gratings	17
3.1	LETG Arm	17
A	Summary	19
A.1	Status	19
A.2	Comments	19

1 Front

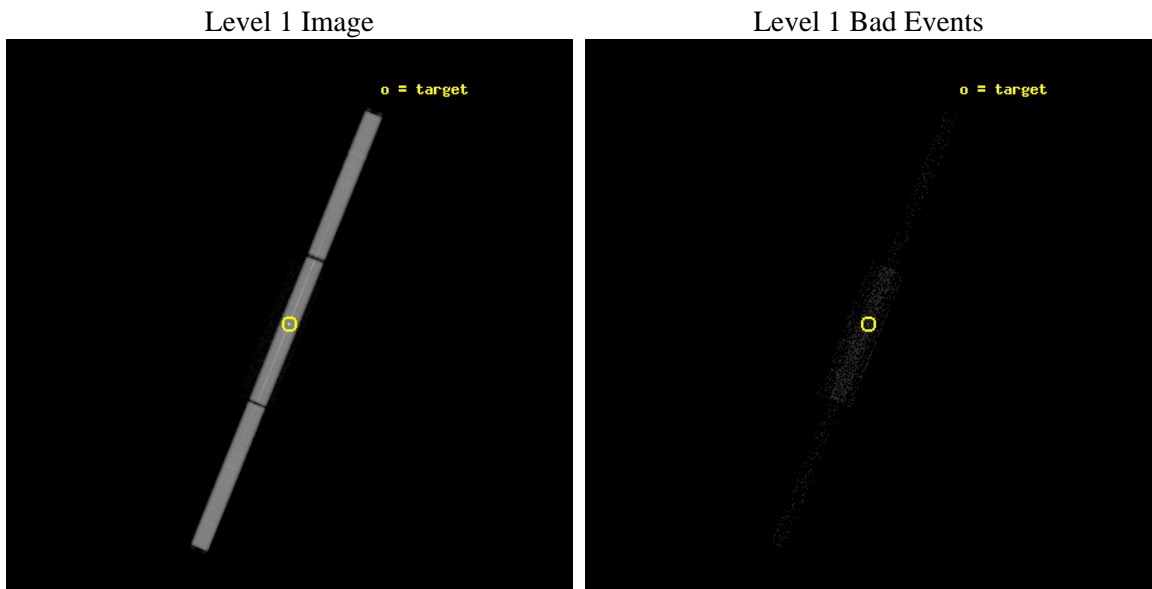
seq_num	790115	Sequence number
obs_id	8379	Observation id
title	AO8 Calibration Observations of Mkn 421 and PKS2155-304	Proposal t
observer	Dr. CXC Calibration	Principal investigator
object	PKS2155-304	Source name
ra_targ	329.716667	Observer's specified target RA [deg]
dec_targ	-30.225556	Observer's specified target Dec [deg]
ra_nom	329.71466689976	Nominal RA [deg]
dec_nom	-30.22109466824	Nominal Dec [deg]
roll_nom	112.06634214712	Nominal Roll [deg]
revision	5	Processing version of data
ontime	30140.382687688	[s]
lifetime	29823.619551433	Ontime multiplied by DTCOR
l2events	2768809	Number of level 2 events



2 OBI

2.1 OBI

2.1.1 Images



2.1.2 Parameters

obi_num	0	Obi number	sched_exp_time	30000.000000	[s] Scheduled observation exposure time
ascdsver	8.4.5	Processing system revision	ontime	30140.382687688	[s]
caldbver	4.5.1.1	 	l1events	3673593	Number of level 1 events
date	2012-08-11T20:18:44	Date and time of file creation			
revision	4	Processing version of data			

2.1.3 Events

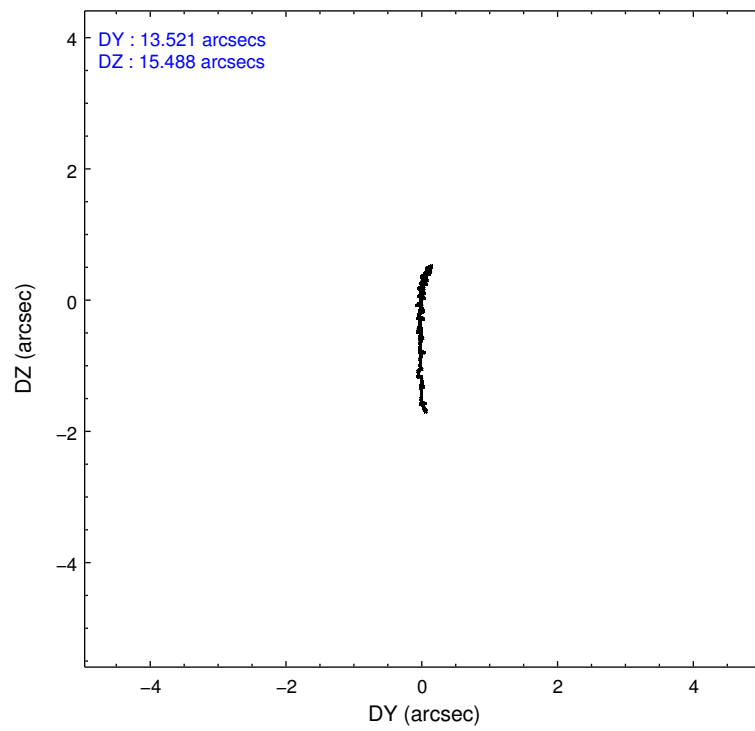
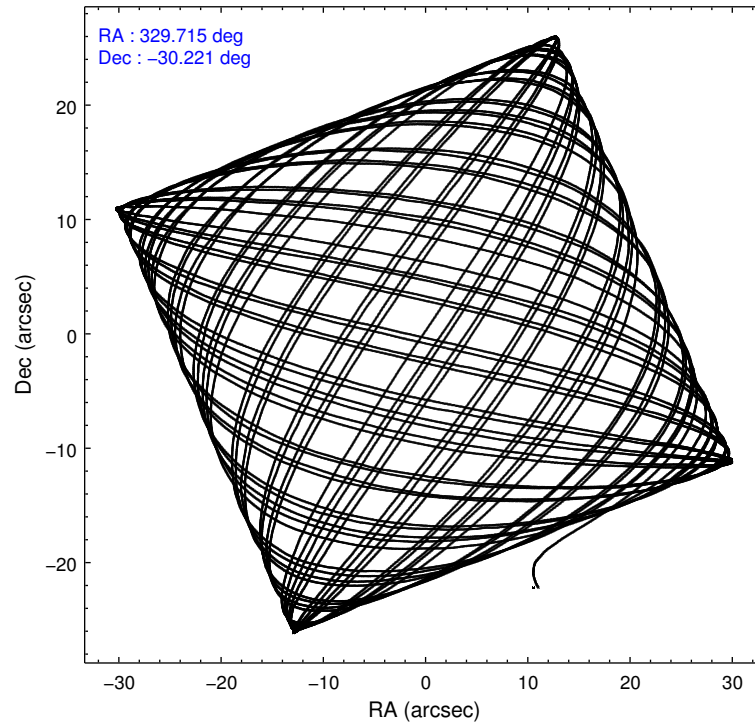
Level 1 Events

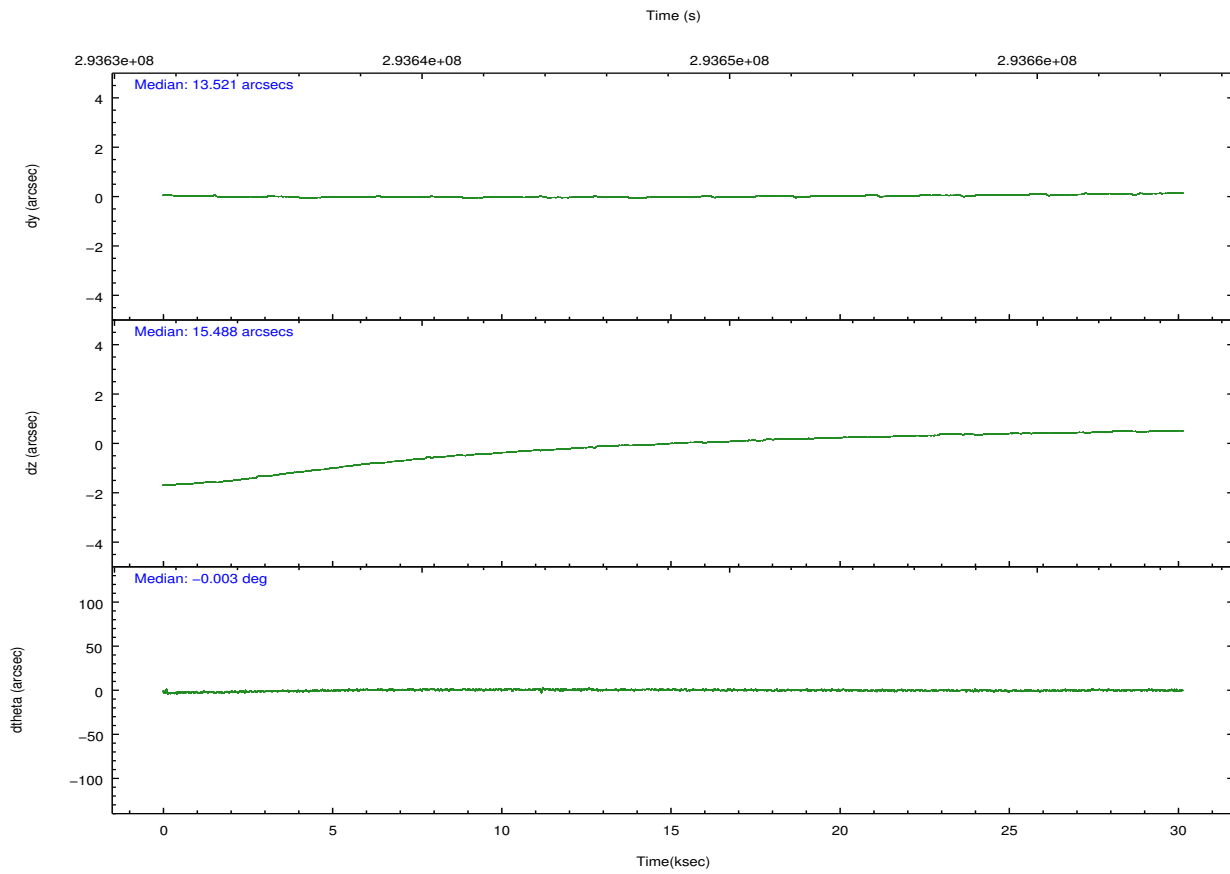
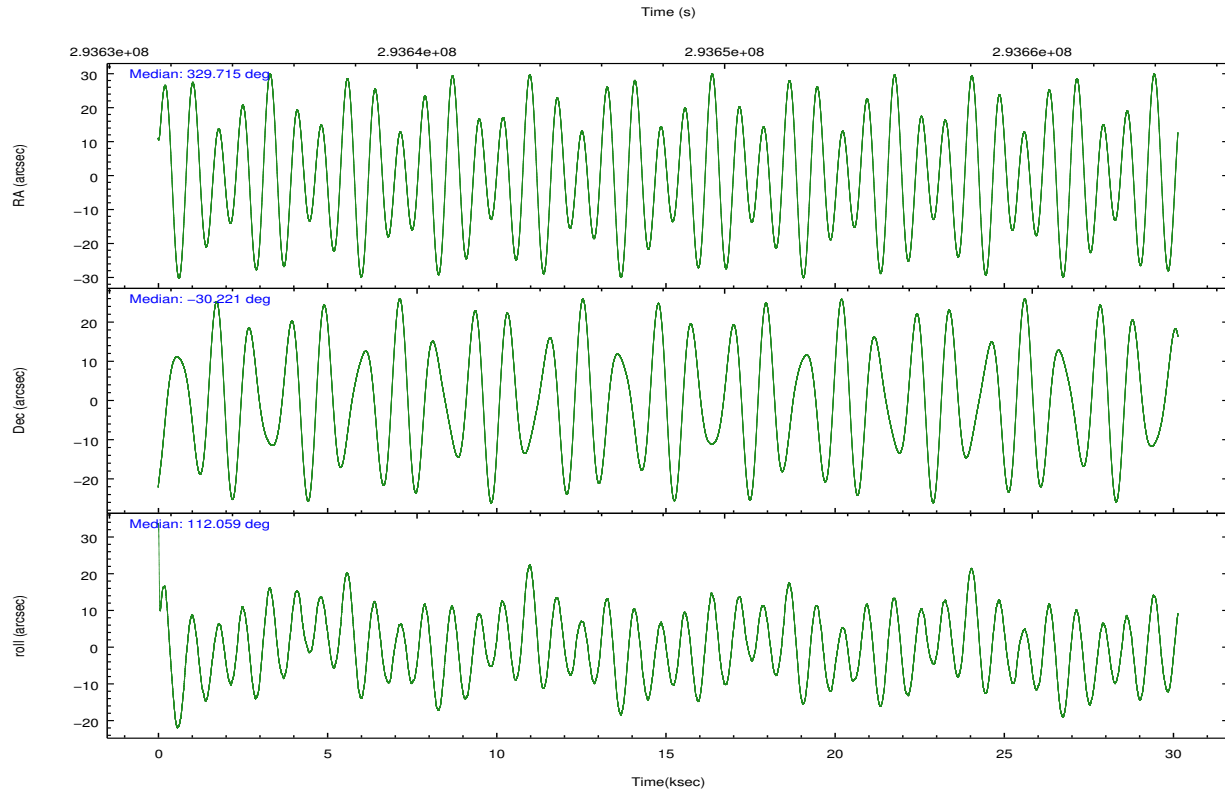
	segment 1	segment 2	segment 3
level 1 events	1174690	1329695	1169208
rejected events	43205	50236	43382
rejected %	3%	3%	3%

2.2 Compared Parameters

Parameter	Planned	Actual	Parameter	Planned	Actual
Instrument	HRC	HRC	Obspar format version number	7	7
Detector	HRC-S	HRC-S	Obspar file type	PREDICTED	ACTUAL
Grating	LETG	LETG	Obspar update status	NONE	UPDATED
Data mode	OBSERVING	OBSERVING			
Observation mode	POINTING	POINTING			
[deg] Pointing RA	329.741864	329.7146668997551			
[deg] Pointing Dec	-30.237606	-30.22109466824047			
[deg] Pointing Roll	112.012686	112.0663421471215			
[s] Window start time (MET)	291772865.184000	291772865.184000			
[s] Window stop time (MET)	296956865.184000	296956865.184000			
[mm] SIM focus pos	-1.429586	-1.428180813131781			
[mm] SIM defocus	0.1037507710433287	0.1051558262725154			
[mm] SIM translation stage pos	250.455976	250.4635187648994			
[mm] SIM translation stage offset	0	-0.007540371344731511			
[s] Observation start time (MET)	293633219.184000	293632009.97549			
Observation start date	2007-04-22T12:45:54	2007-04-22T12:26:49			
[s] Observation end time (MET)	293663219.184000	293664055.06451			
Observation end date	2007-04-22T21:05:54	2007-04-22T21:20:55			

2.3 Aspect



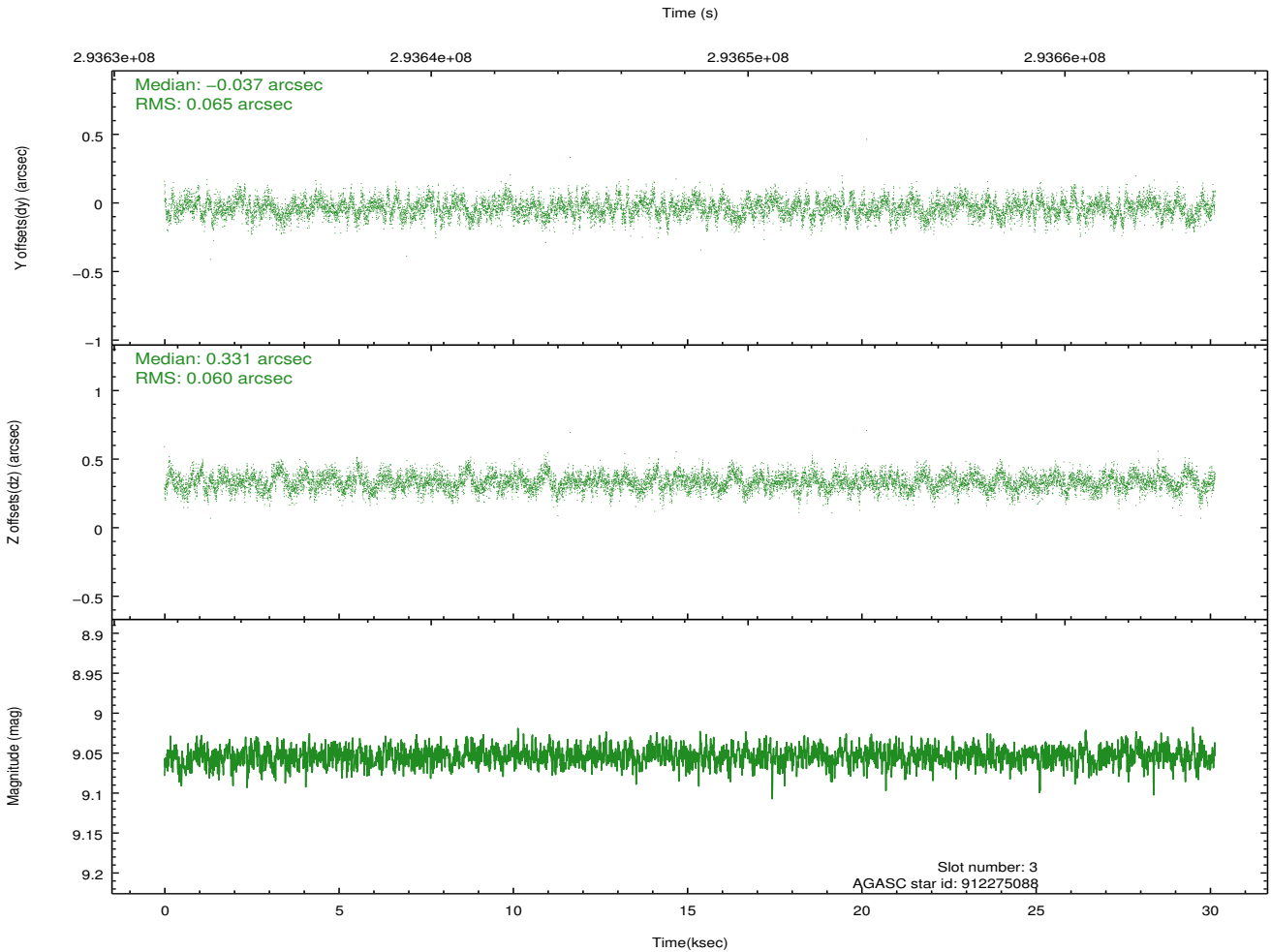
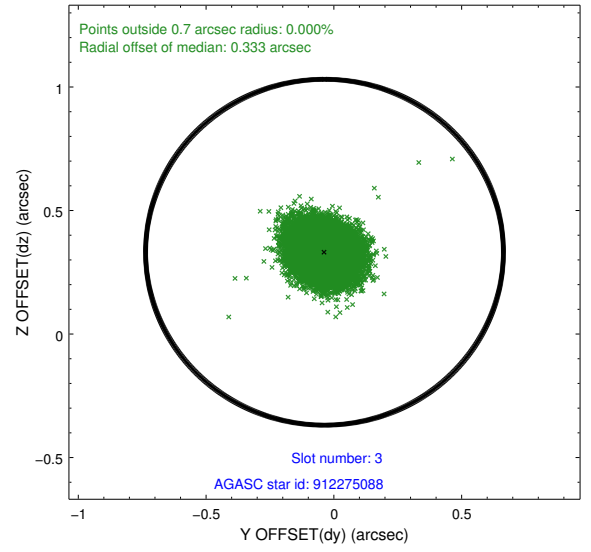
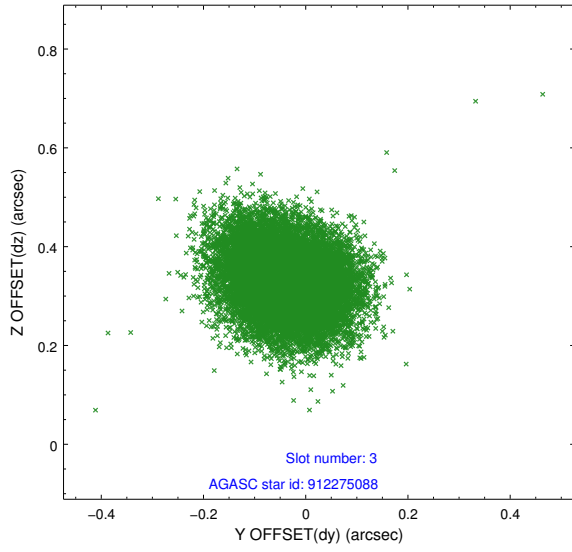


Slot Statistics

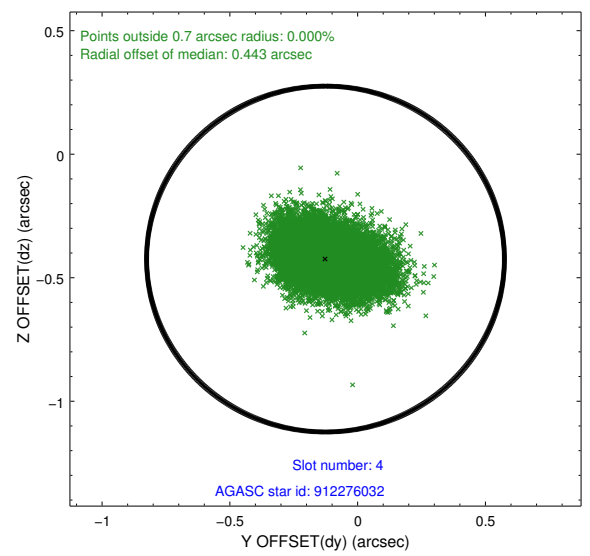
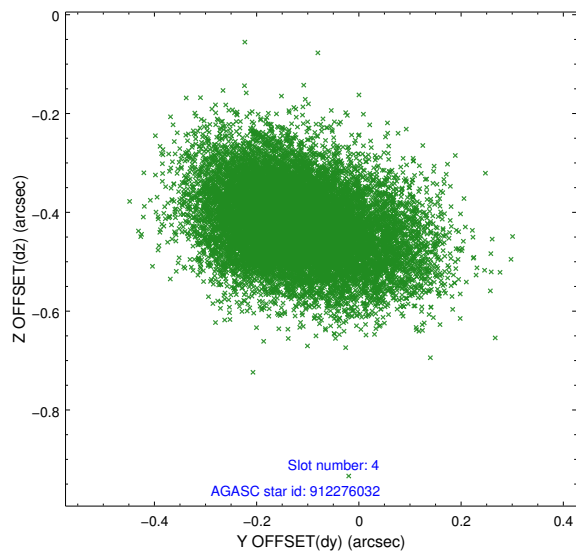
slot	status	id	mag	n_pts	med_dy	med_dz	dr1	dr2	ra	dec	mean_y	mean_z
0	FID	HRC-S-1	7.01	7351	0.104	-0.197	0.014	0.023	0.000000	0.000000	-1167.88	-464.10
1	FID	HRC-S-2	6.99	7352	0.169	-0.106	0.006	0.011	0.000000	0.000000	1231.71	-456.74
2	FID	HRC-S-3	7.01	7352	0.116	0.000	0.015	0.024	0.000000	0.000000	-1170.41	565.57
3	GUIDE	912275088	9.05	14688	-0.037	0.331	0.094	0.152	329.619228	-29.738698	1808.89	-317.19
4	GUIDE	912276032	9.60	14673	-0.126	-0.424	0.134	0.231	329.395967	-29.803466	1852.65	416.34
5	GUIDE	981468128	9.36	14669	0.214	0.229	0.121	0.202	329.756350	-30.158334	248.09	-148.61
6	GUIDE	981478152	9.39	14694	0.052	-0.085	0.115	0.186	329.415589	-30.057192	982.06	699.63
7	GUIDE	981468016	9.00	14692	-0.113	-0.053	0.100	0.159	328.842457	-30.034984	1716.50	2329.64

2.4 Star Slots

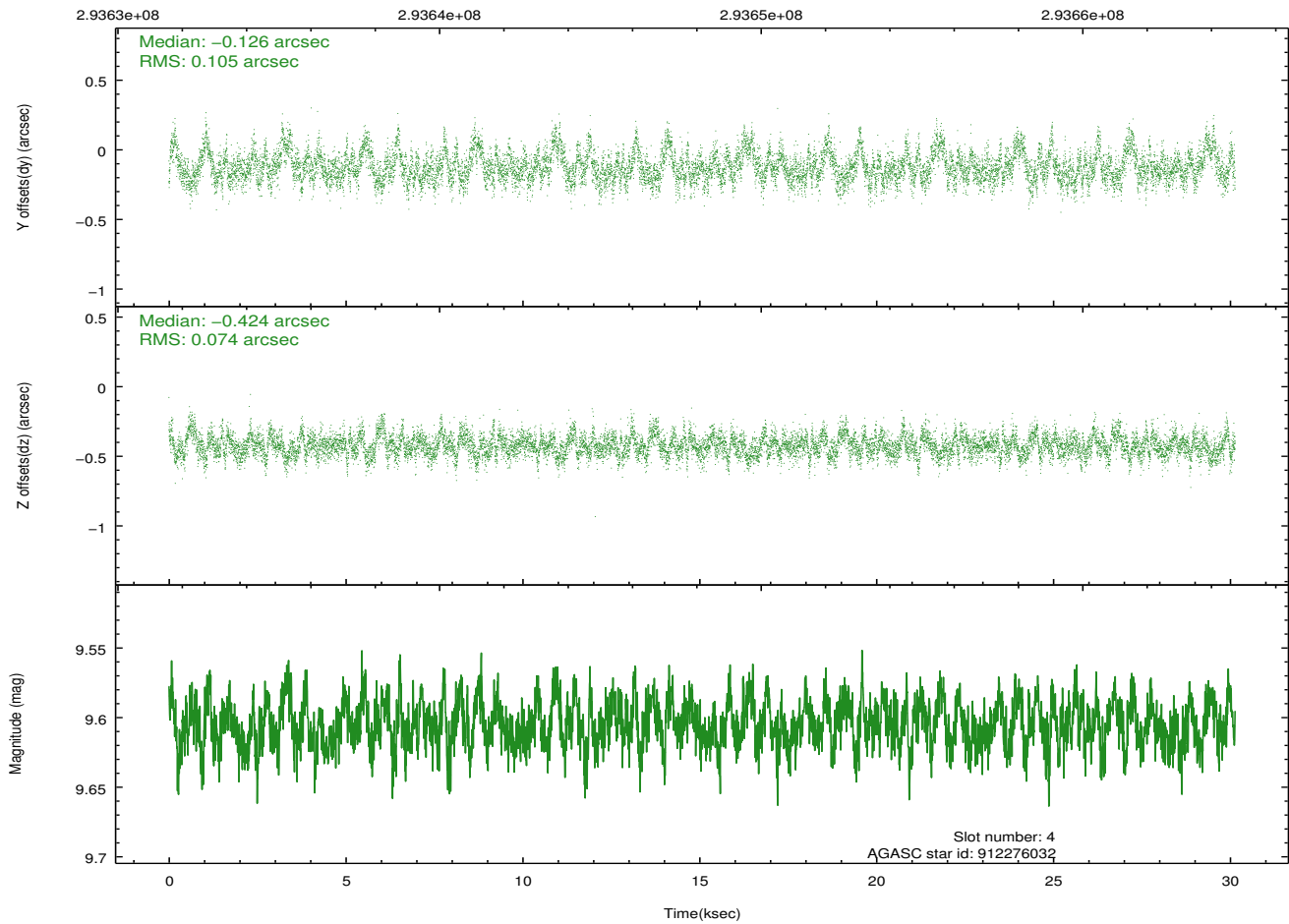
2.4.1 Slot 3



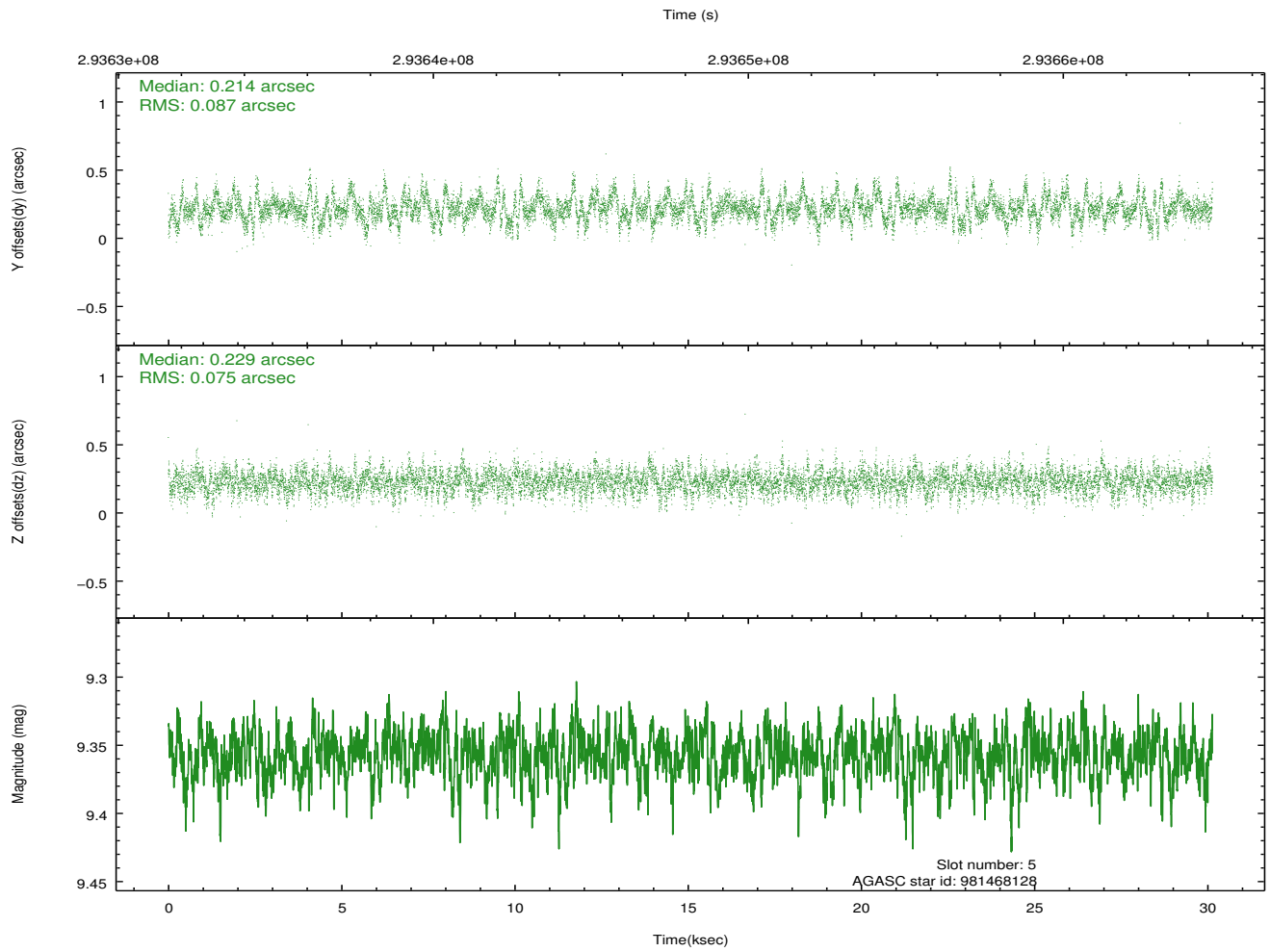
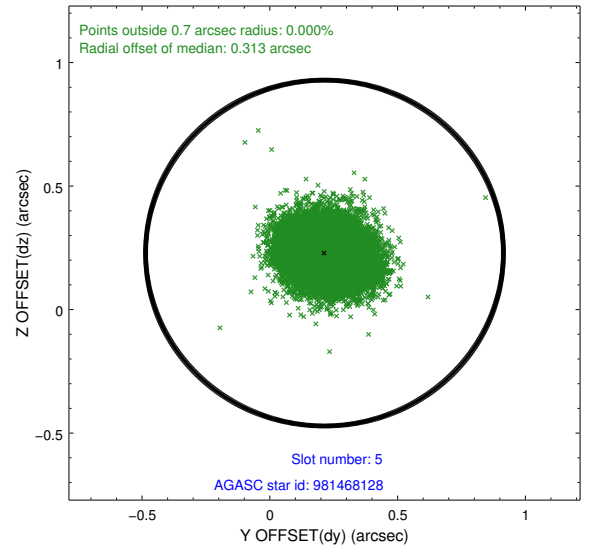
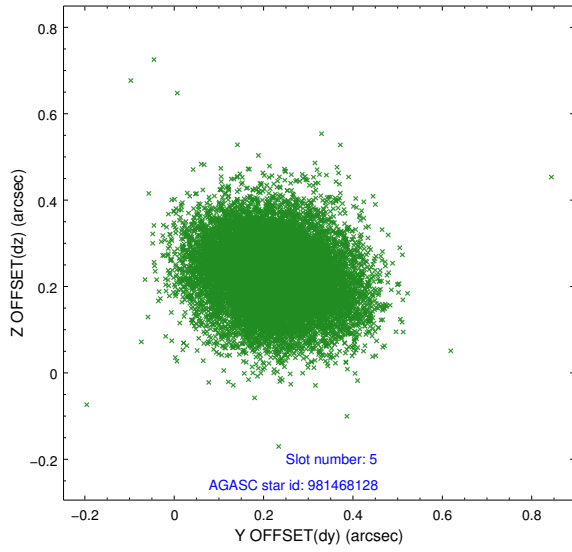
2.4.2 Slot 4



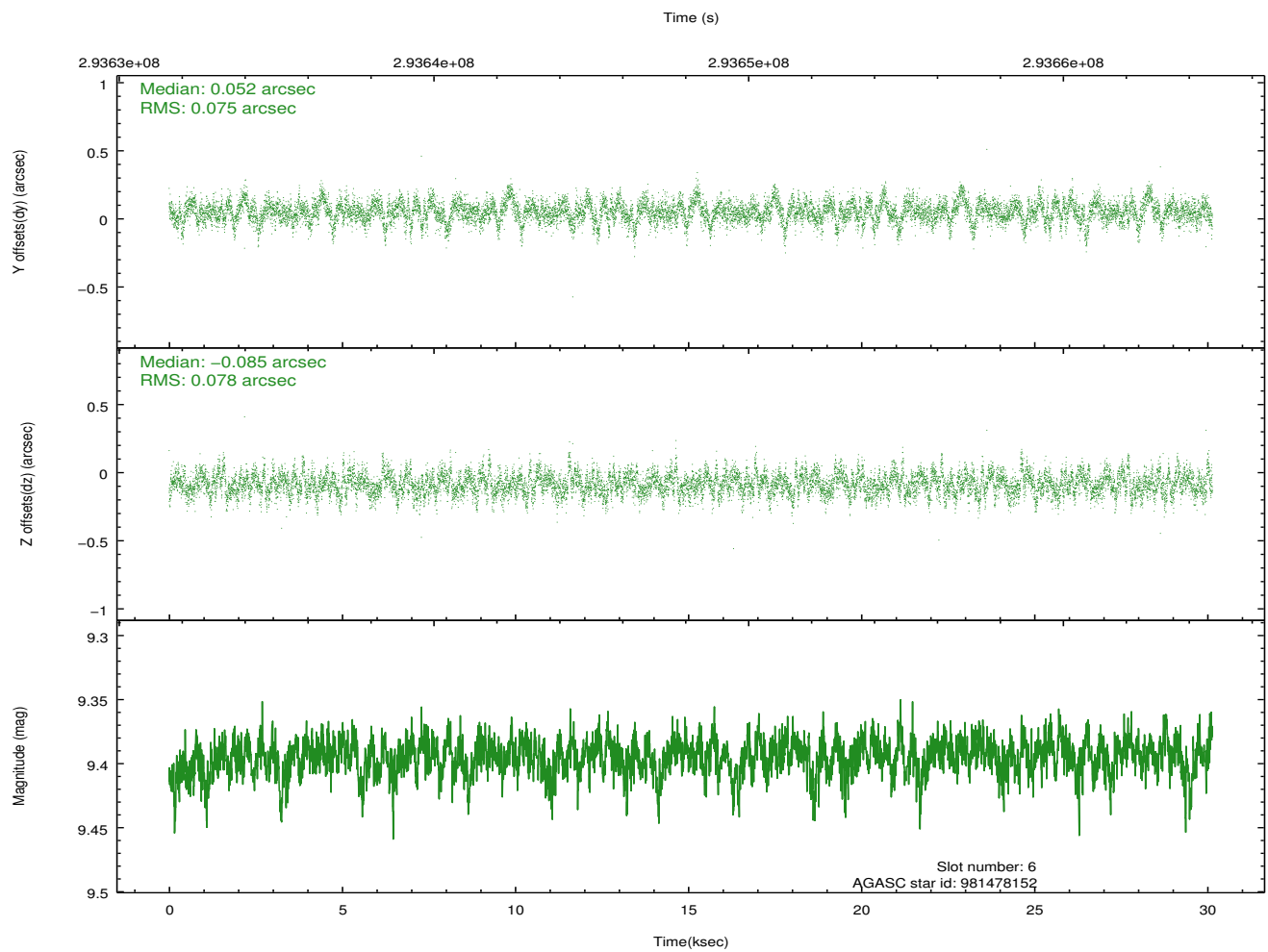
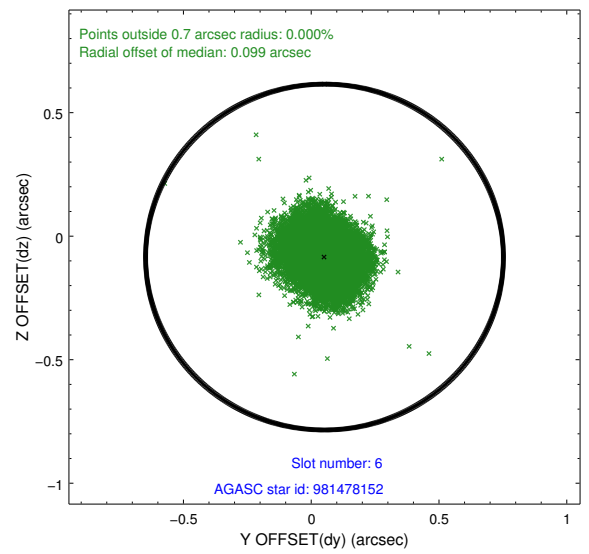
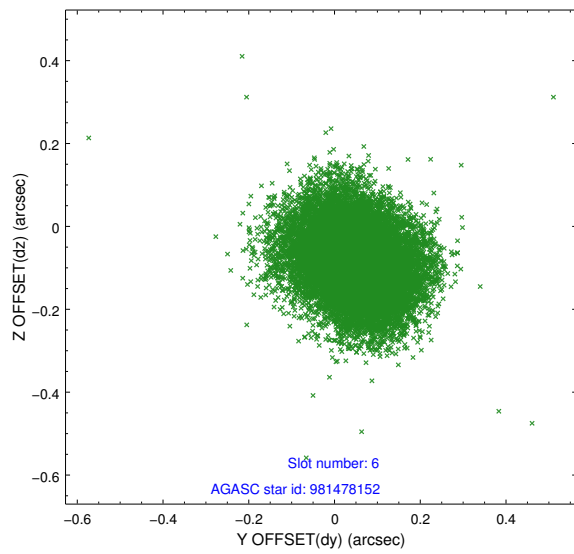
Time (s)



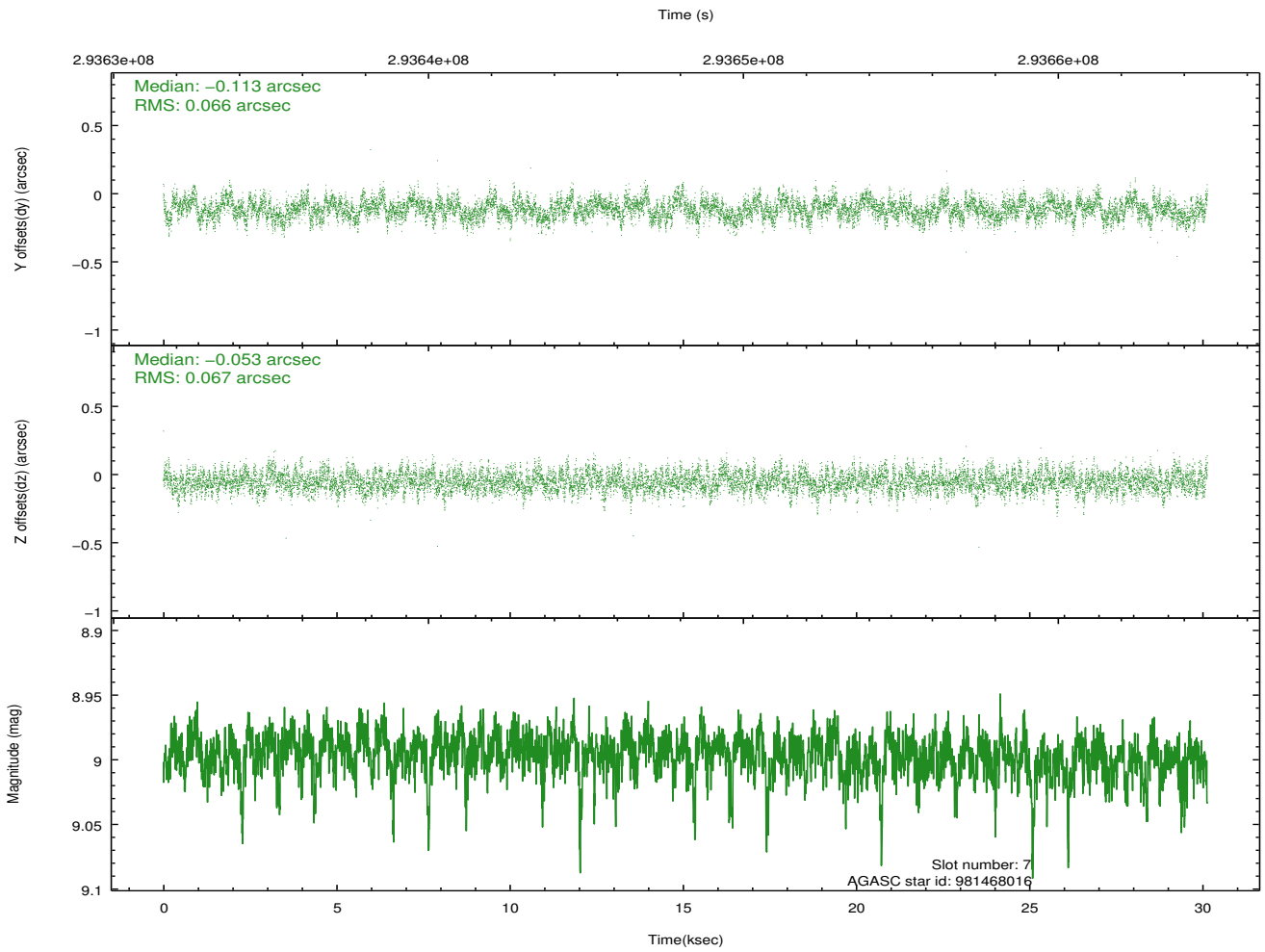
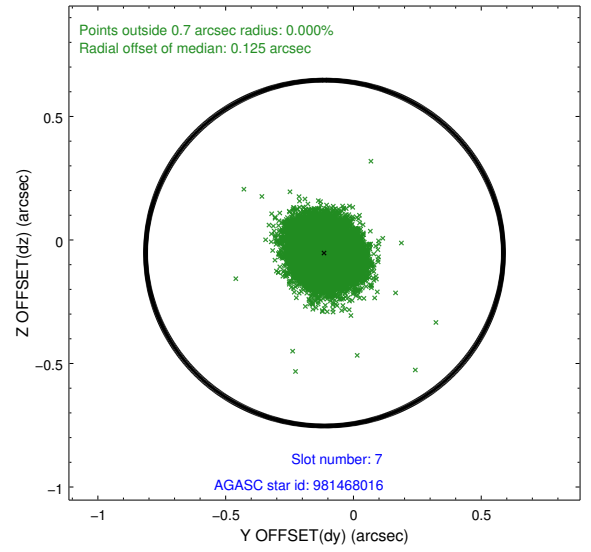
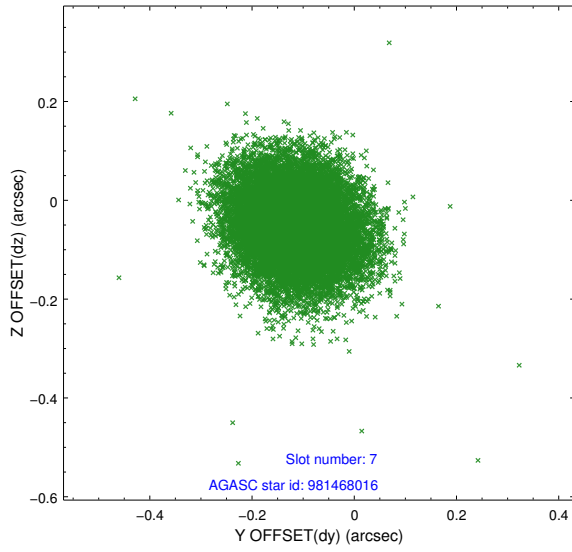
2.4.3 Slot 5



2.4.4 Slot 6

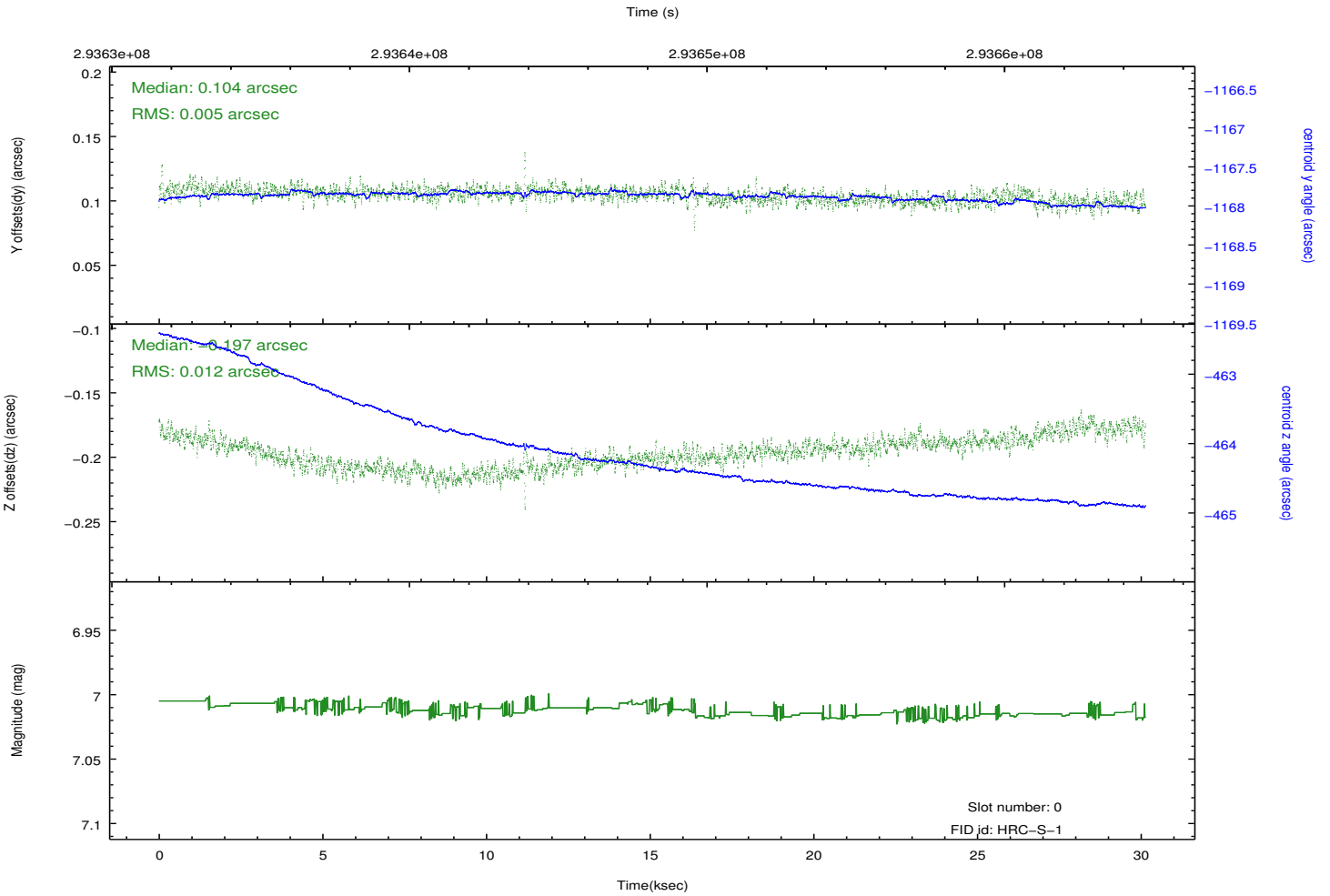
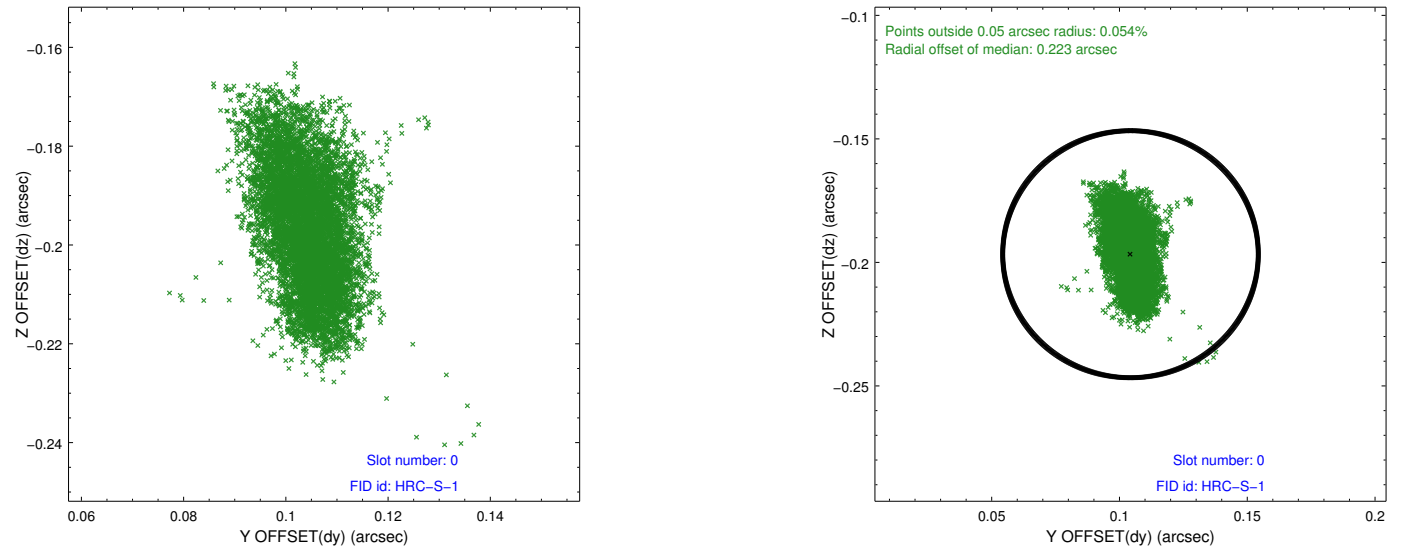


2.4.5 Slot 7

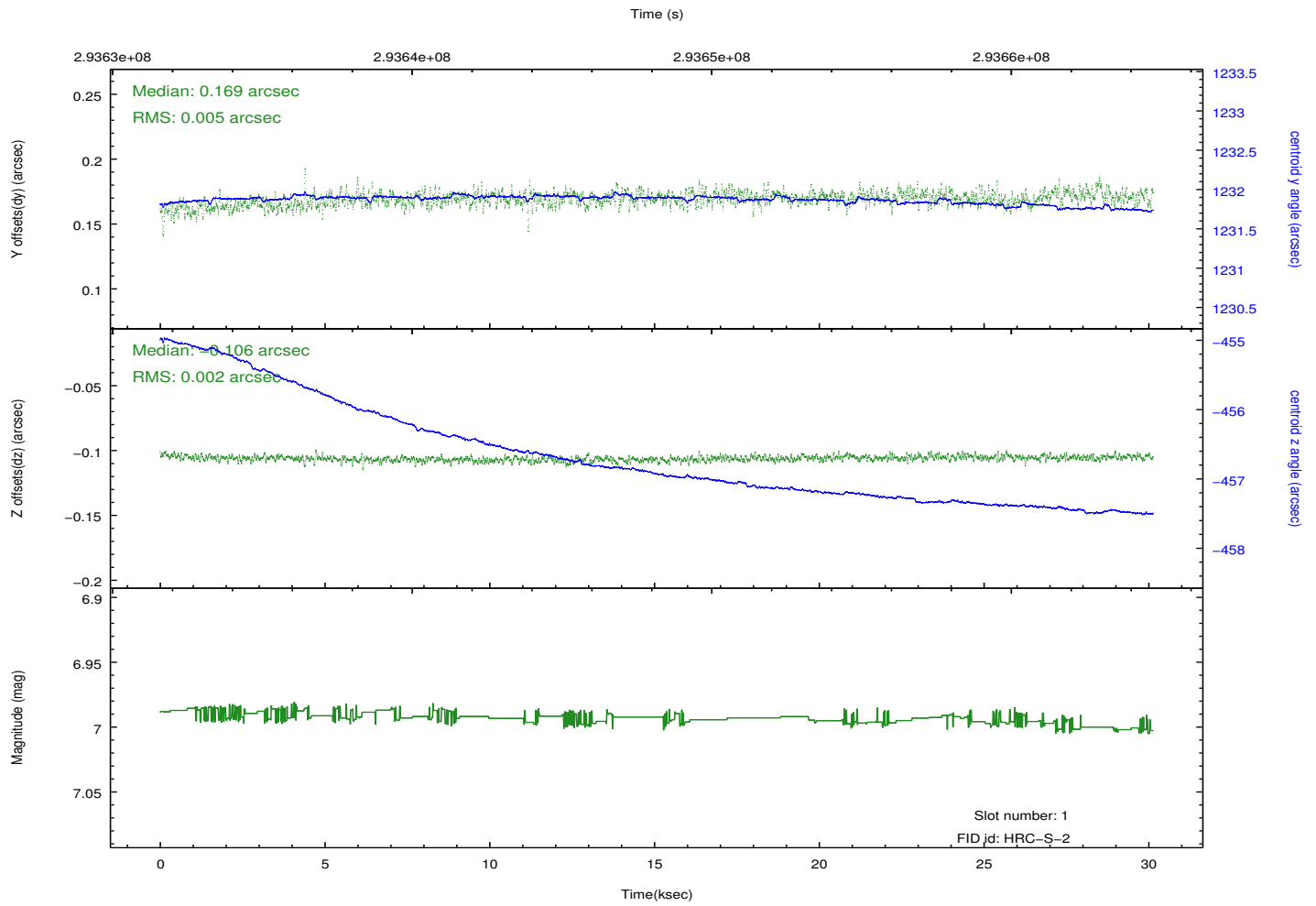
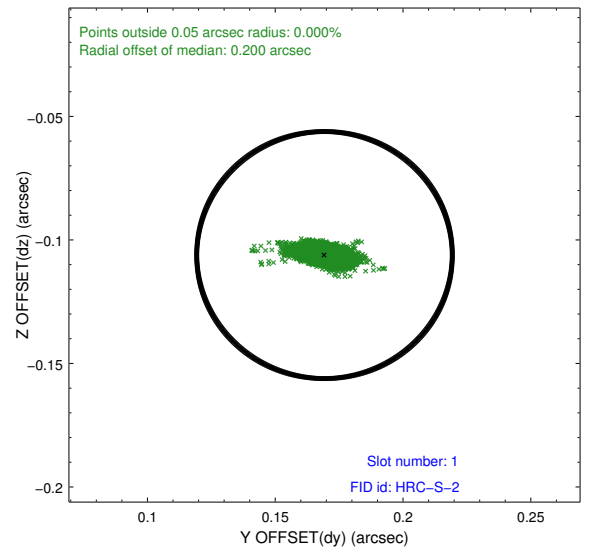
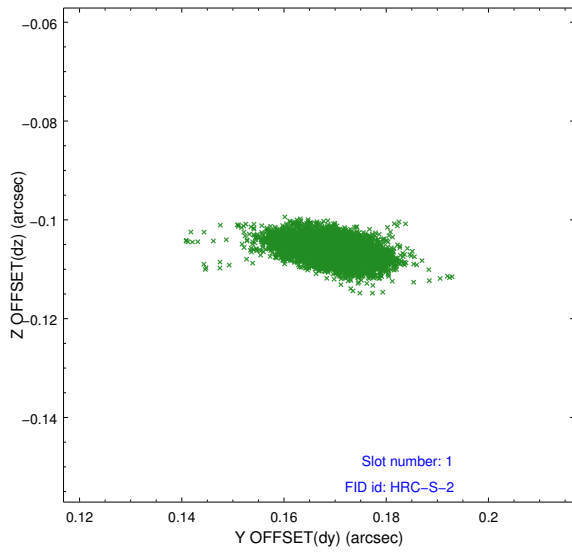


2.5 FID Slots

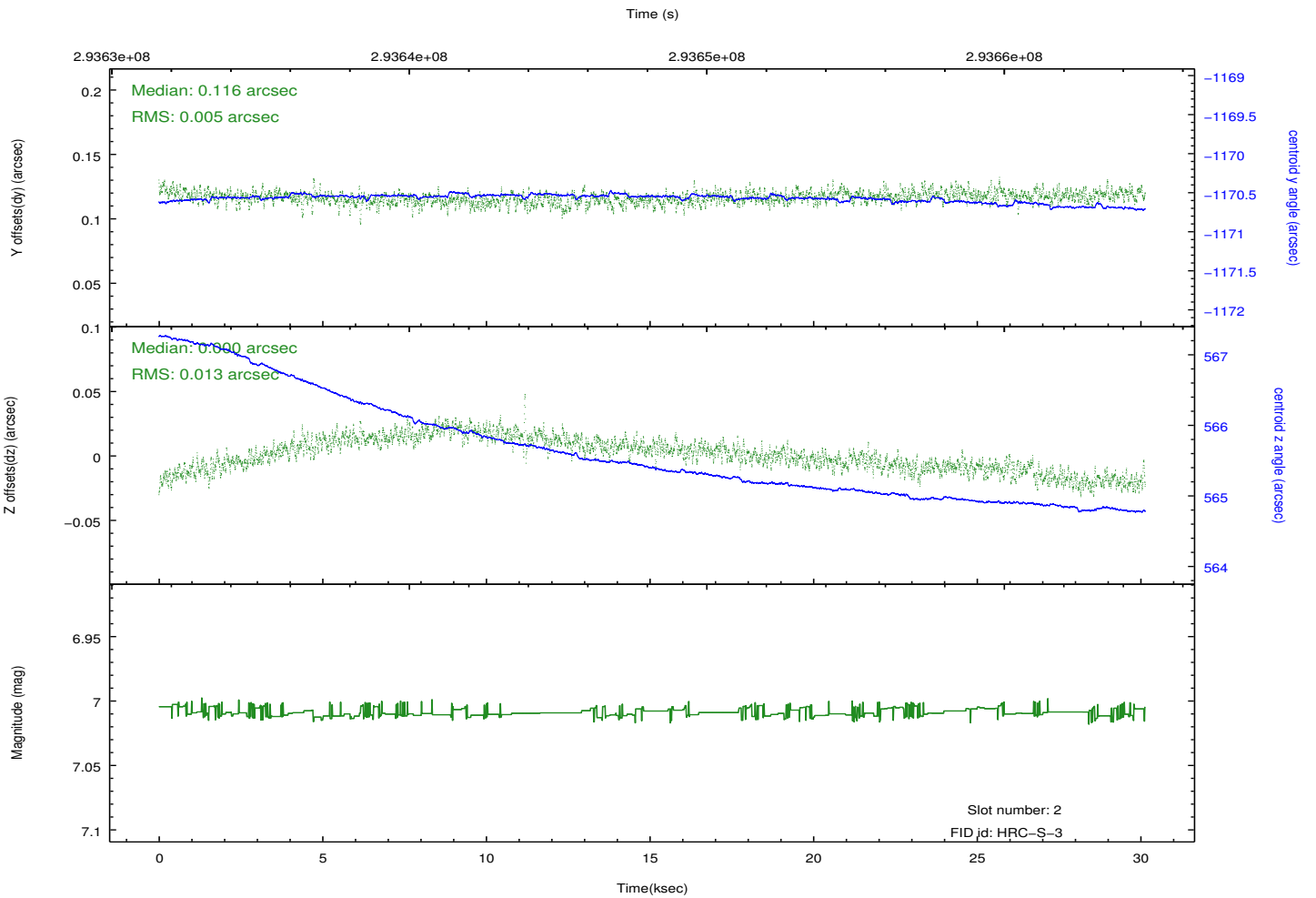
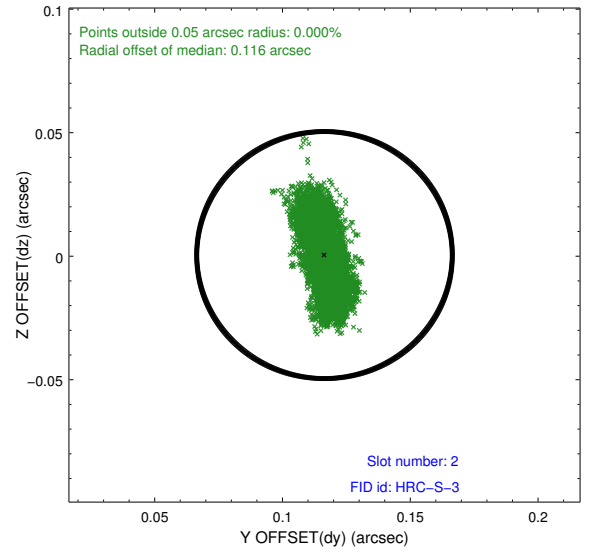
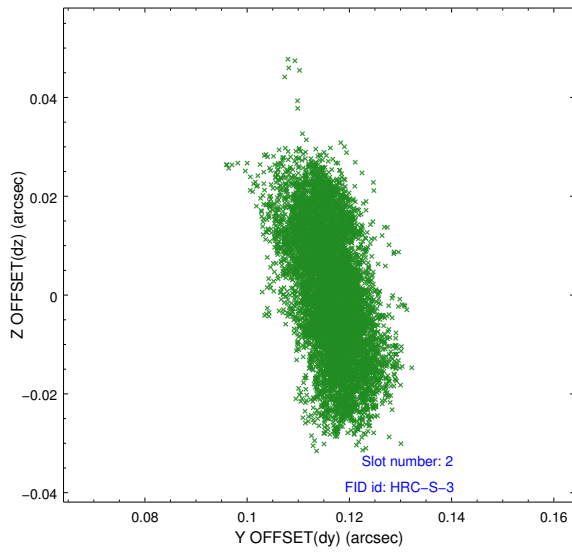
2.5.1 Slot 0



2.5.2 Slot 1

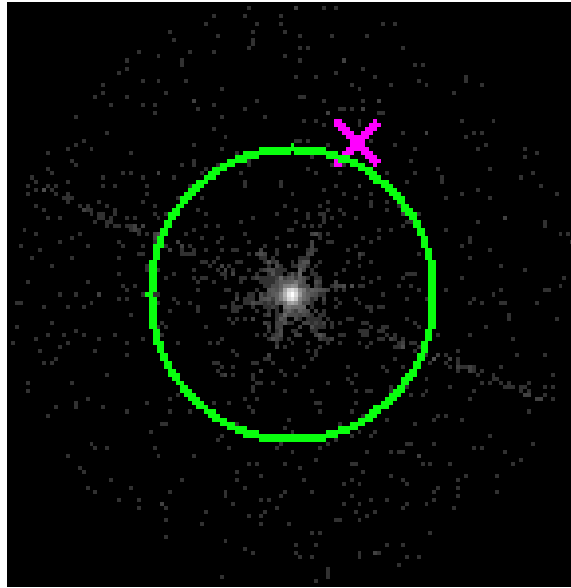


2.5.3 Slot 2

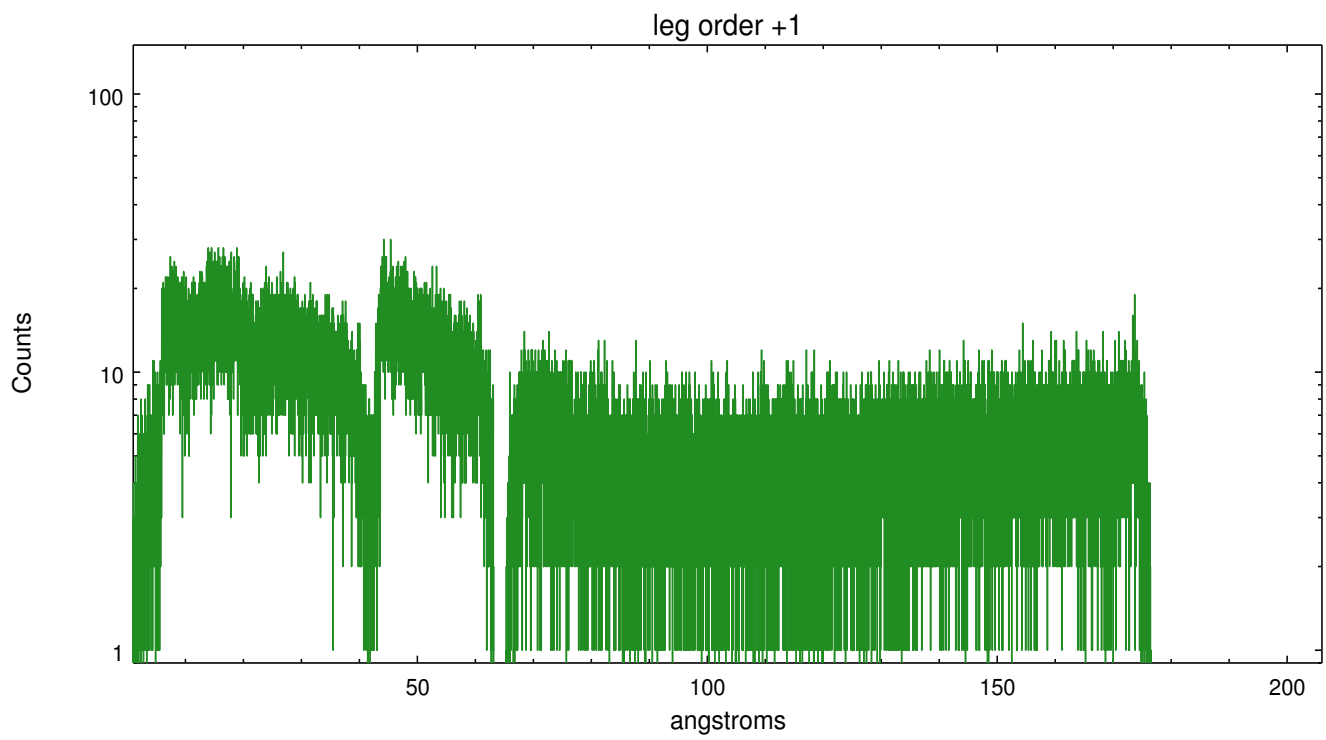
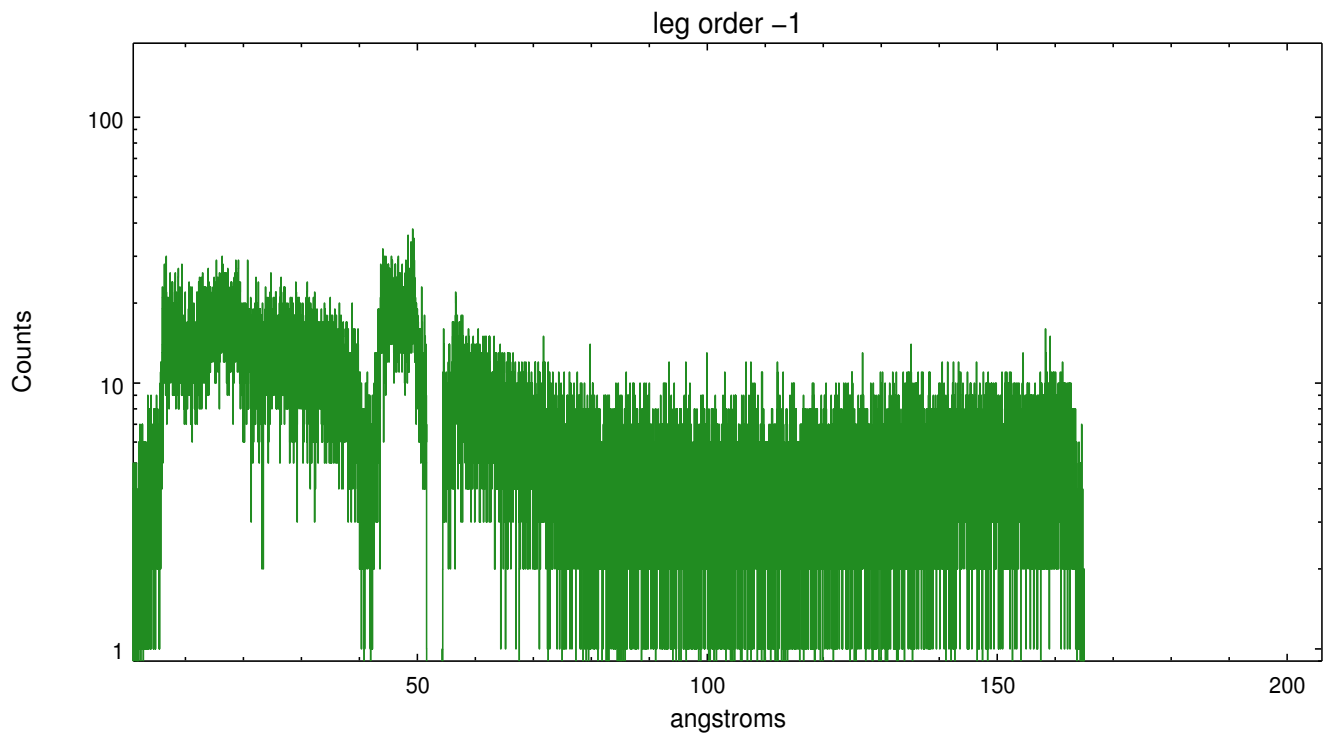


3 Gratings

3.1 LETG Arm



LETG Zero Order



A Summary

A.1 Status

V&V Scientist	Joy Nichols
V&V Date (YYYY-MM-DD)	2012.08.17
V&V Edition	1
V&V Disposition and Status	OK
V&V Charge Time	30.1403827

A.2 Comments