

V&V Reference Report

L2 ASCDS Version : 8.4.3.1

Observation 8449 - L2 Version 2
Chandra X-Ray Center

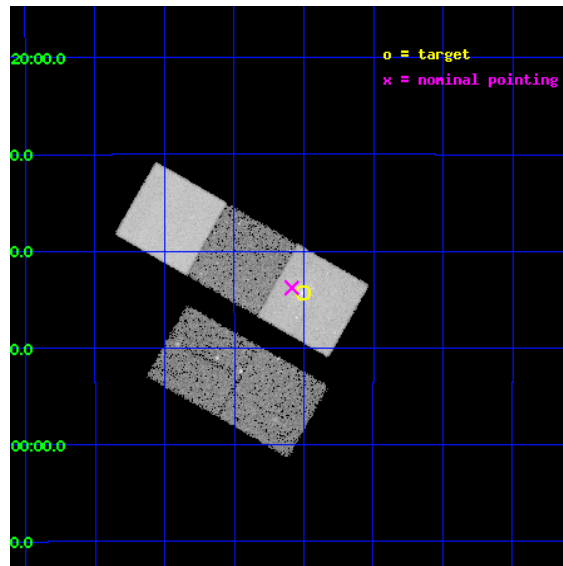
L2 Processing Date : Apr 11 2012

Contents

1	Front	2
2	OBI	3
2.1	OBI	3
2.1.1	Images	3
2.1.2	Bias	3
2.1.3	Parameters	4
2.1.4	Events	4
2.2	Compared Parameters	5
2.3	Aspect	6
2.4	Star Slots	9
2.4.1	Slot 3	9
2.4.2	Slot 4	10
2.4.3	Slot 5	11
2.4.4	Slot 6	12
2.4.5	Slot 7	13
2.5	FID Slots	14
2.5.1	Slot 0	14
2.5.2	Slot 1	15
2.5.3	Slot 2	16
A	Summary	17
A.1	Status	17
A.2	Comments	17

1 Front

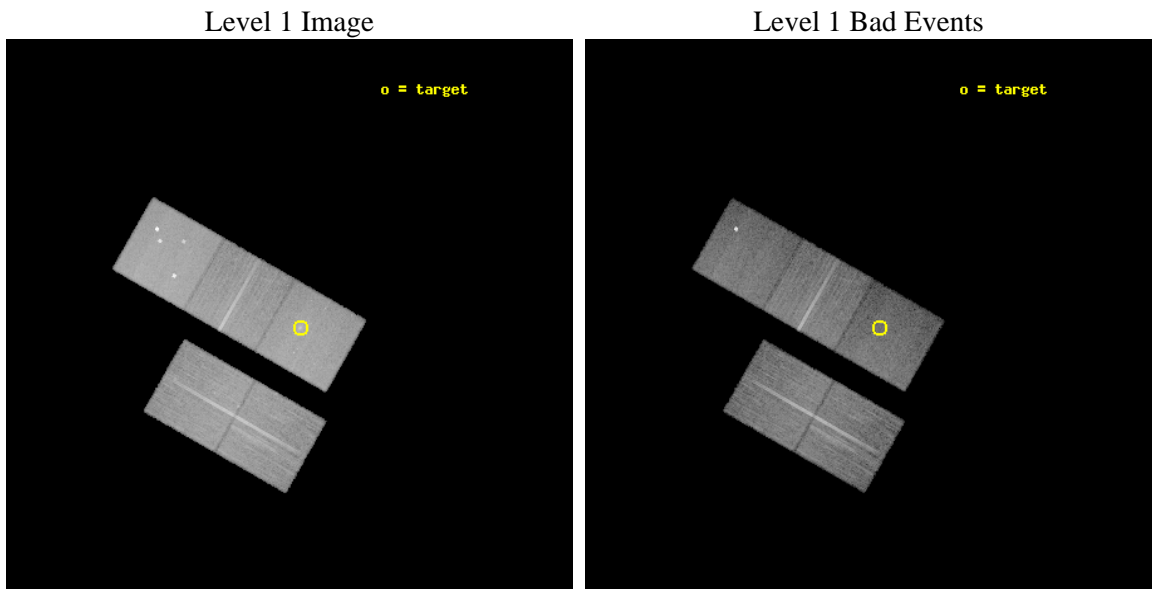
seq_num	600500	Sequence number
obs_id	8449	Observation id
title	Resolving the Dark Matter in a Normal Elliptical Galaxy	Proposal t
observer	Dr Philip Humphrey	Principal investigator
object	NGC 720	Source name
dtcycle	0	
cycle	P	events from which exps? Prim/Second/Both
ra_targ	28.252083	Observer's specified target RA [deg]
dec_targ	-13.738611	Observer's specified target Dec [deg]
ra_nom	28.271488009795	Nominal RA [deg]
dec_nom	-13.729862339661	Nominal Dec [deg]
roll_nom	29.66122171311	Nominal Roll [deg]
revision	2	Processing version of data
ontime	19161.100147367	Sum of GTIs [s]
livetime	18910.746267744	Livetime [s]
ontime2	19157.959167063	Sum of GTIs [s]
ontime3	19161.100147367	Sum of GTIs [s]
ontime5	19161.100147367	Sum of GTIs [s]
ontime6	19161.100147367	Sum of GTIs [s]
ontime7	19161.100147367	Sum of GTIs [s]
l2events	209296	Number of level 2 events



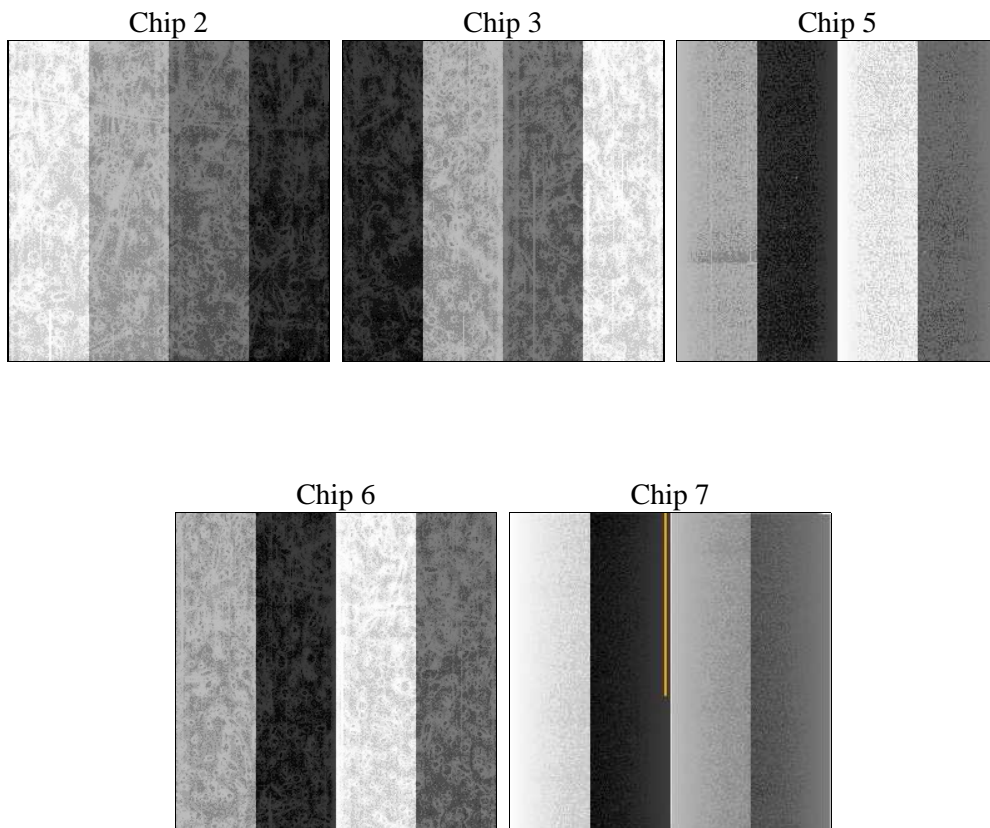
2 OBI

2.1 OBI

2.1.1 Images



2.1.2 Bias



2.1.3 Parameters

obi_num	0	Obi number	sched_exp_time	19000.000000	[s] Scheduled observation exposure time
ascdsver	8.4.3.1	Processing system revision	ontime	19161.100147367	Sum of GTIs [s]
caldsver	4.4.9	 	ontime2	19157.959167063	Sum of GTIs [s]
date	2012-04-11T14:50:48	Date and time of file creation	ontime3	19161.100147367	Sum of GTIs [s]
revision	2	Processing version of data	ontime5	19161.100147367	Sum of GTIs [s]
			ontime6	19161.100147367	Sum of GTIs [s]
			ontime7	19161.100147367	Sum of GTIs [s]
			l1events	870012	Number of level 1 events

2.1.4 Events

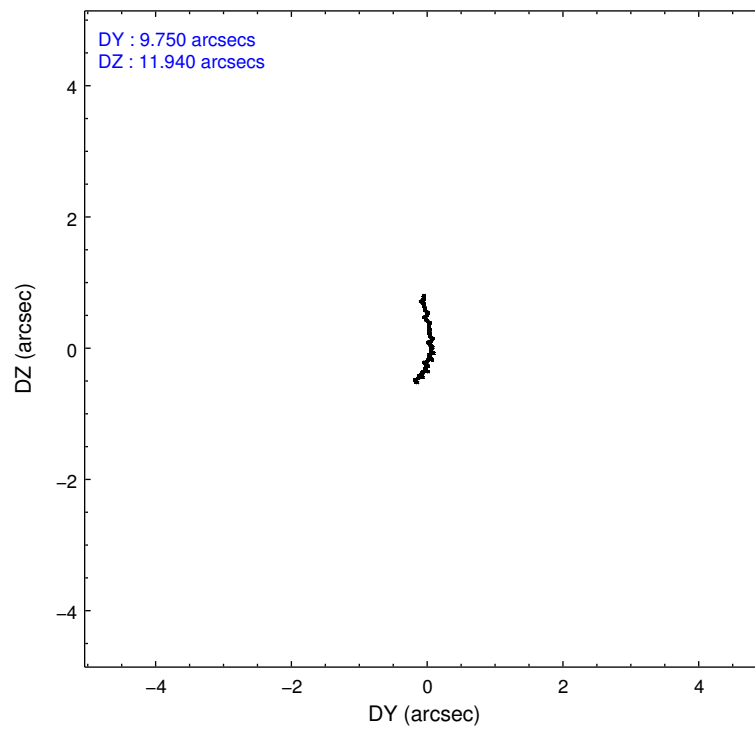
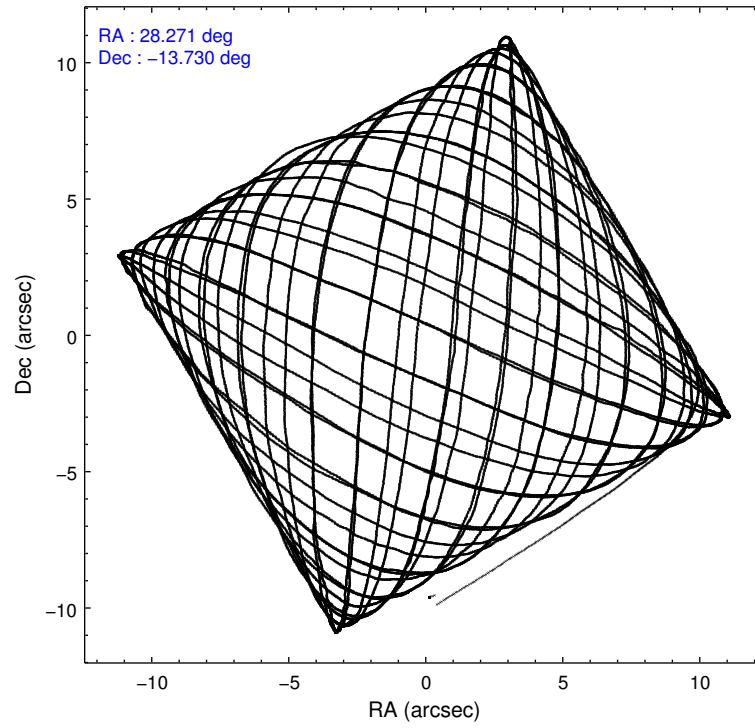
	ccd 2	ccd 3	ccd 5	ccd 6	ccd 7
level 1 events	161506	151894	222830	156684	177098
rejected events	146543	138410	115281	141170	97515
rejected %	90%	91%	51%	90%	55%

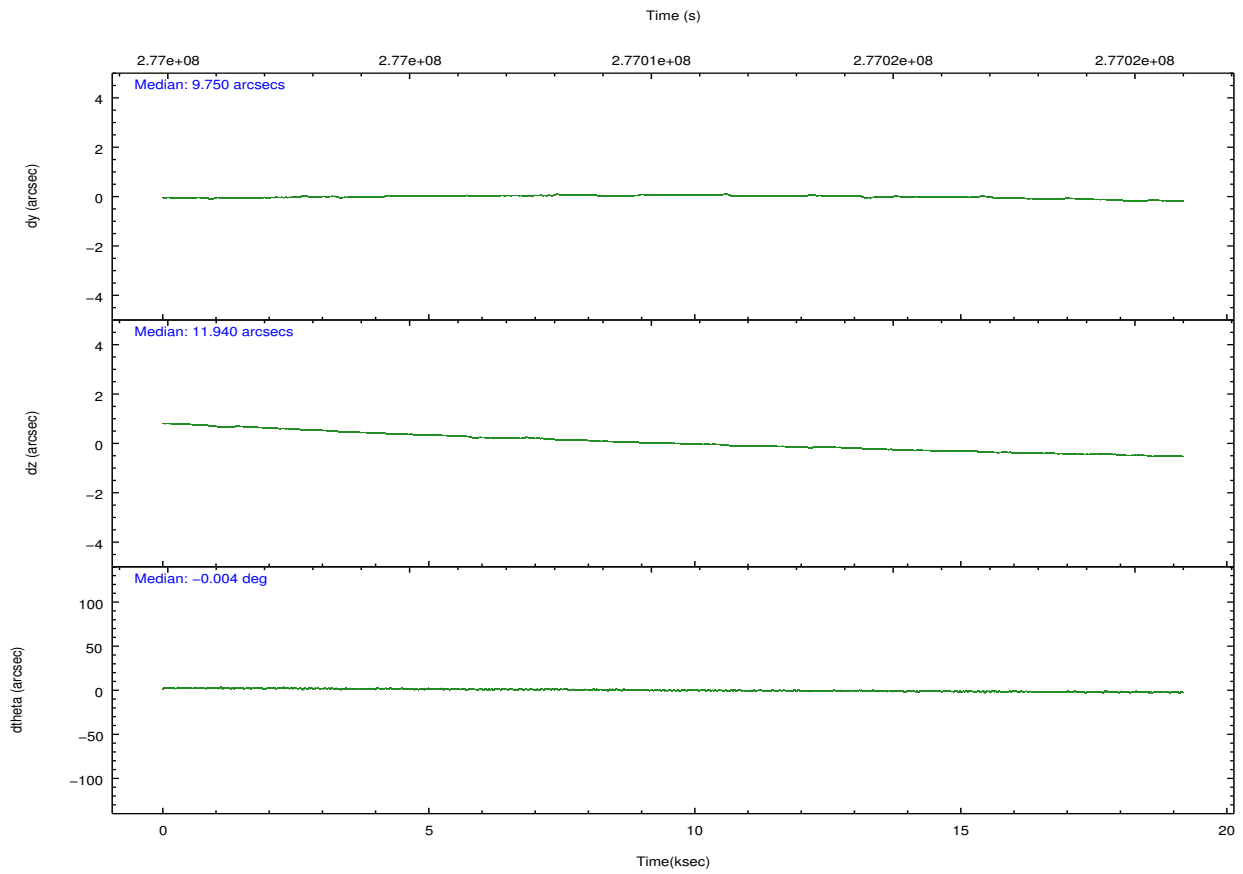
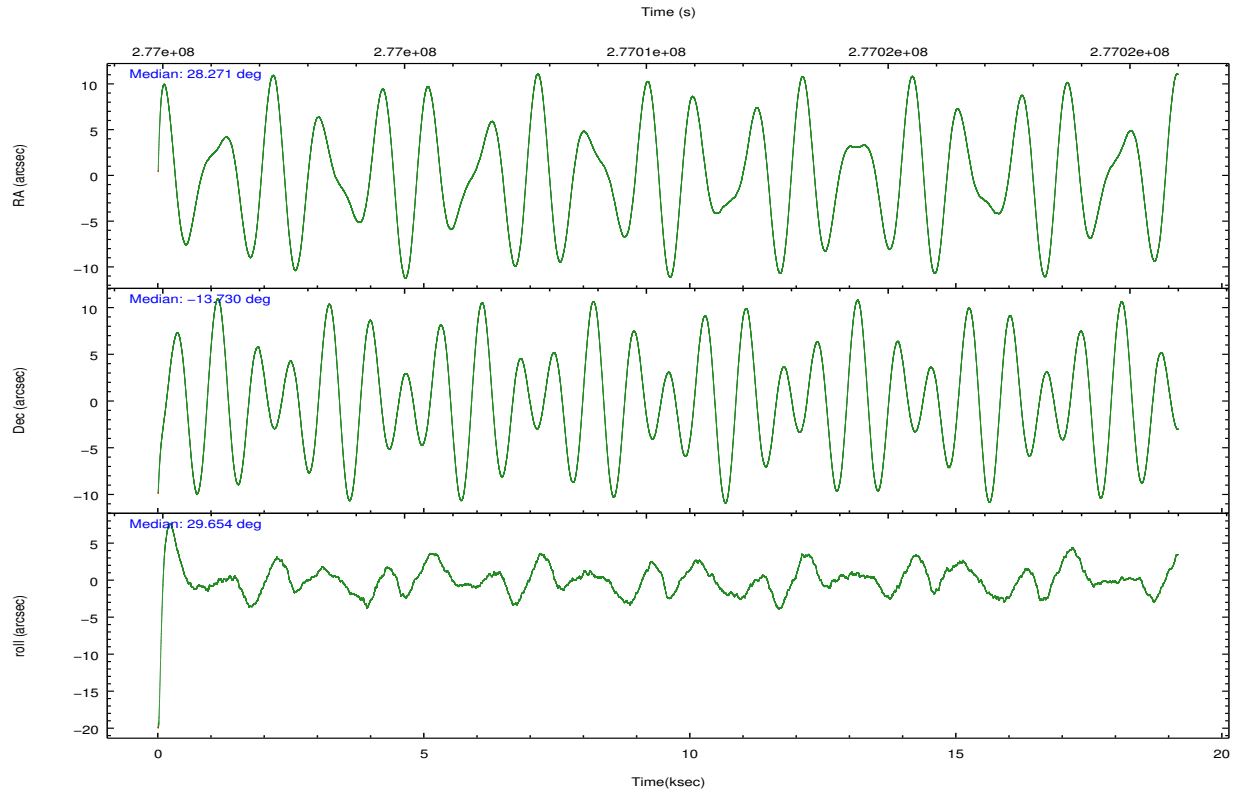
	ccd 2	ccd 3	ccd 5	ccd 6	ccd 7
grade 0 events	5861	4914	16494	5812	9363
	3%	3%	7%	3%	5%
grade 1 events	86	77	414	68	168
	0%	0%	0%	0%	0%
grade 2 events	3661	3123	32391	3530	17124
	2%	2%	14%	2%	9%
grade 3 events	1703	1670	4715	1782	7996
	1%	1%	2%	1%	4%
grade 4 events	1647	1631	4513	1716	7839
	1%	1%	2%	1%	4%
grade 5 events	4961	5999	17630	6368	18402
	3%	3%	7%	4%	10%
grade 6 events	2713	2824	54745	3388	41041
	1%	1%	24%	2%	23%
grade 7 events	140874	131656	91928	134020	75165
	87%	86%	41%	85%	42%

2.2 Compared Parameters

Parameter	Planned	Actual	Parameter	Planned	Actual
Instrument	ACIS	ACIS	Obspar format version number	7	7
Detector	ACIS-23567	ACIS-23567	Obspar file type	PREDICTED	ACTUAL
Grating	NONE	NONE	Obspar update status	NONE	UPDATED
Data mode	VFAINT	VFAINT	Number of optional ACIS chips dropped	0	0
Observation mode	POINTING	POINTING	On-chip summing requested	N	N
[deg] Pointing RA	28.257641	28.27148800979488	Subarray requested	NONE	NONE
[deg] Pointing Dec	-13.753562	-13.72986233966092	Alternating exposures requested	N	N
[deg] Pointing Roll	29.501318	29.66122171310965	[s] Primary exposure time	0.000000	3.1
[mm] SIM focus pos	-0.684267	-0.6828225247311905			
[mm] SIM defocus	0	0.001444936568705701			
[mm] SIM translation stage pos	-190.132523	-190.1400660498719			
[mm] SIM translation stage offset	0	0.00754346686406393			
[s] Observation start time (MET)	277001039.184000	276999525.34949			
Observation start date	2006-10-12T00:42:54	2006-10-12T00:18:45			
[s] Observation end time (MET)	277020039.184000	277021314.28802			
Observation end date	2006-10-12T05:59:34	2006-10-12T06:21:54			
Read mode	TIMED	TIMED			

2.3 Aspect



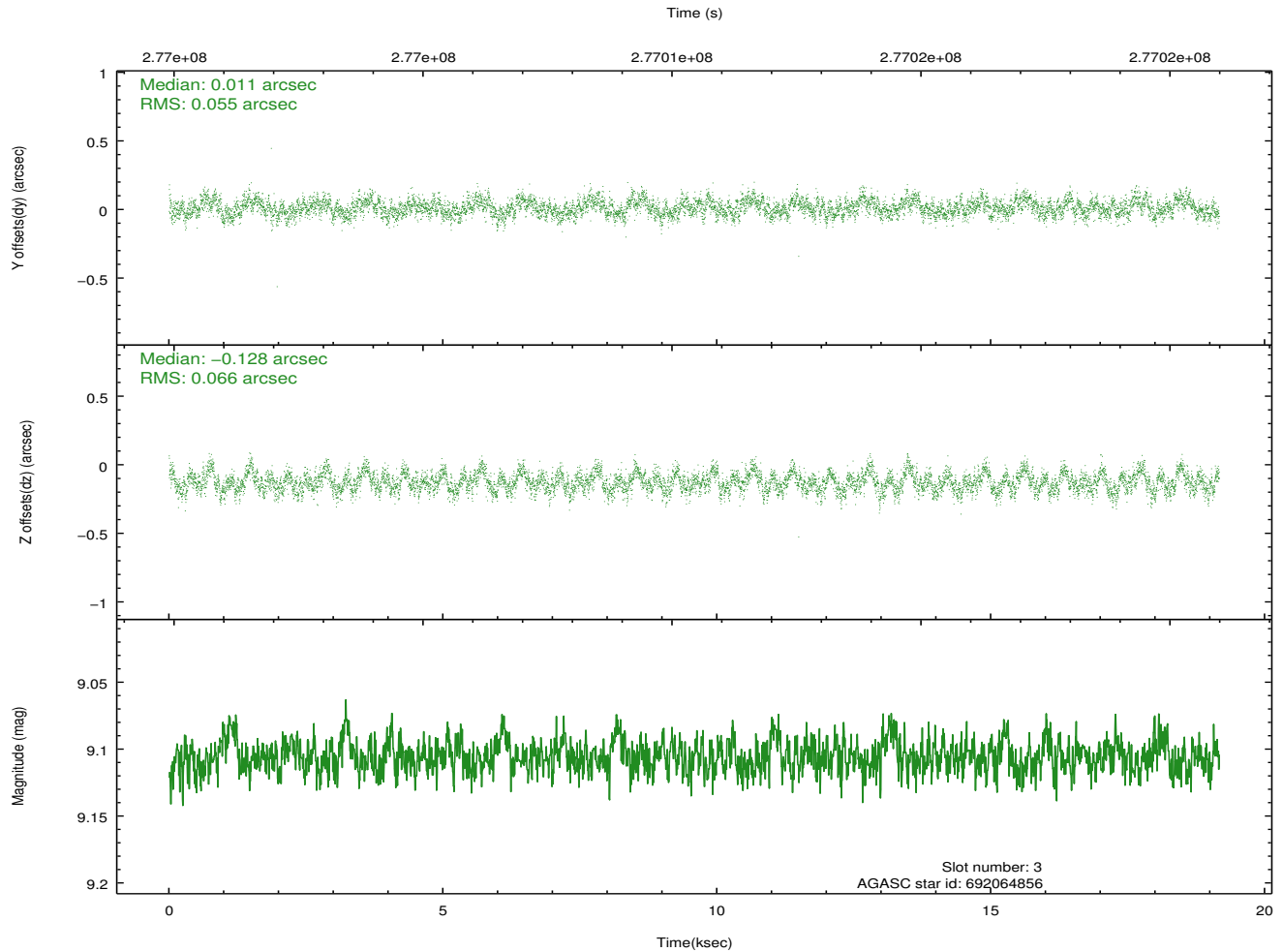
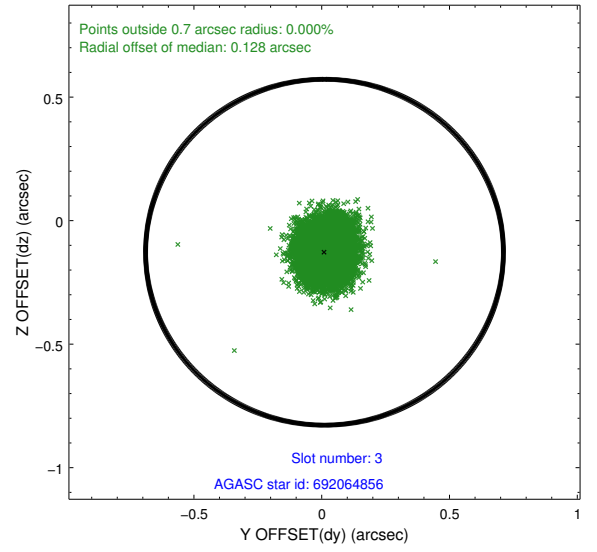
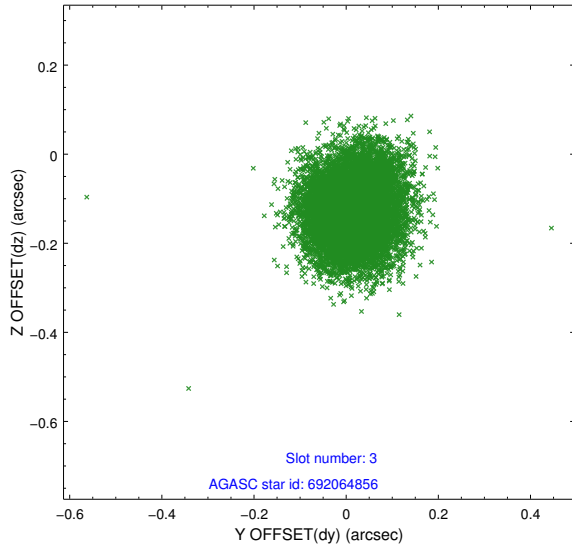


Slot Statistics

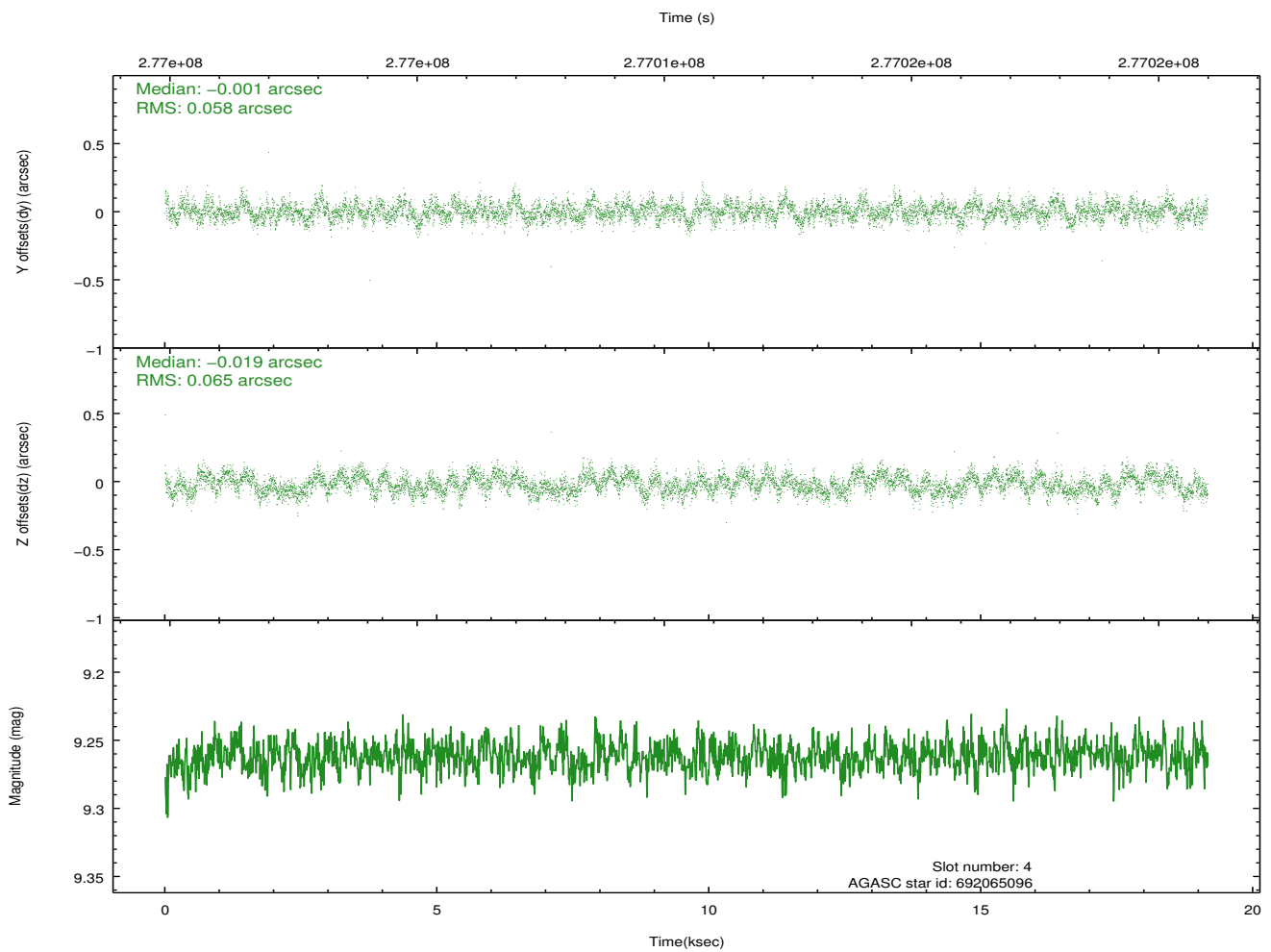
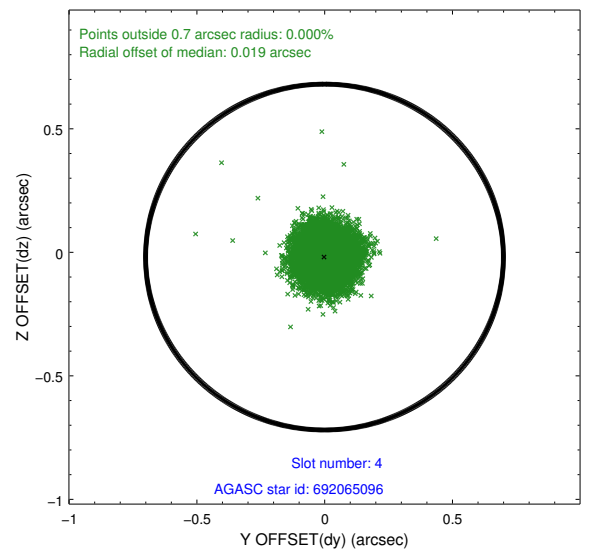
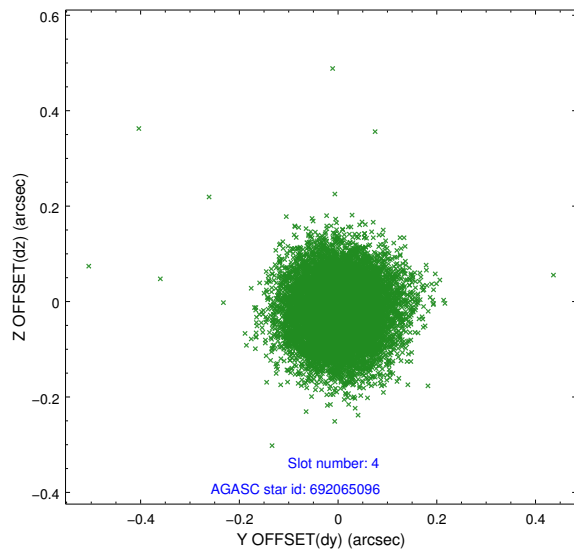
slot	status	id	mag	n_pts	med_dy	med_dz	dr1	dr2	ra	dec	mean_y	mean_z
0	FID	ACIS-S-2	7.11	4676	-0.029	-0.029	0.014	0.021	0.000000	0.000000	-762.60	-1733.31
1	FID	ACIS-S-4	7.21	4676	0.137	0.022	0.007	0.013	0.000000	0.000000	2150.76	175.00
2	FID	ACIS-S-5	7.23	4676	-0.140	0.016	0.013	0.020	0.000000	0.000000	-1815.29	168.91
3	GUIDE	692064856	9.11	9340	0.011	-0.128	0.092	0.147	27.844359	-13.441810	-707.42	1688.33
4	GUIDE	692065096	9.26	9332	-0.001	-0.019	0.094	0.146	28.419979	-13.250038	1387.61	1296.67
5	GUIDE	692065760	8.85	9348	-0.034	0.127	0.090	0.139	28.134676	-14.541960	-1770.45	-2259.21
6	GUIDE	692066072	8.19	9350	0.058	-0.121	0.077	0.122	27.518624	-13.704241	-2164.28	1423.56
7	GUIDE	692067256	8.89	9345	-0.032	0.137	0.091	0.142	28.829272	-14.105112	1113.46	-2085.82

2.4 Star Slots

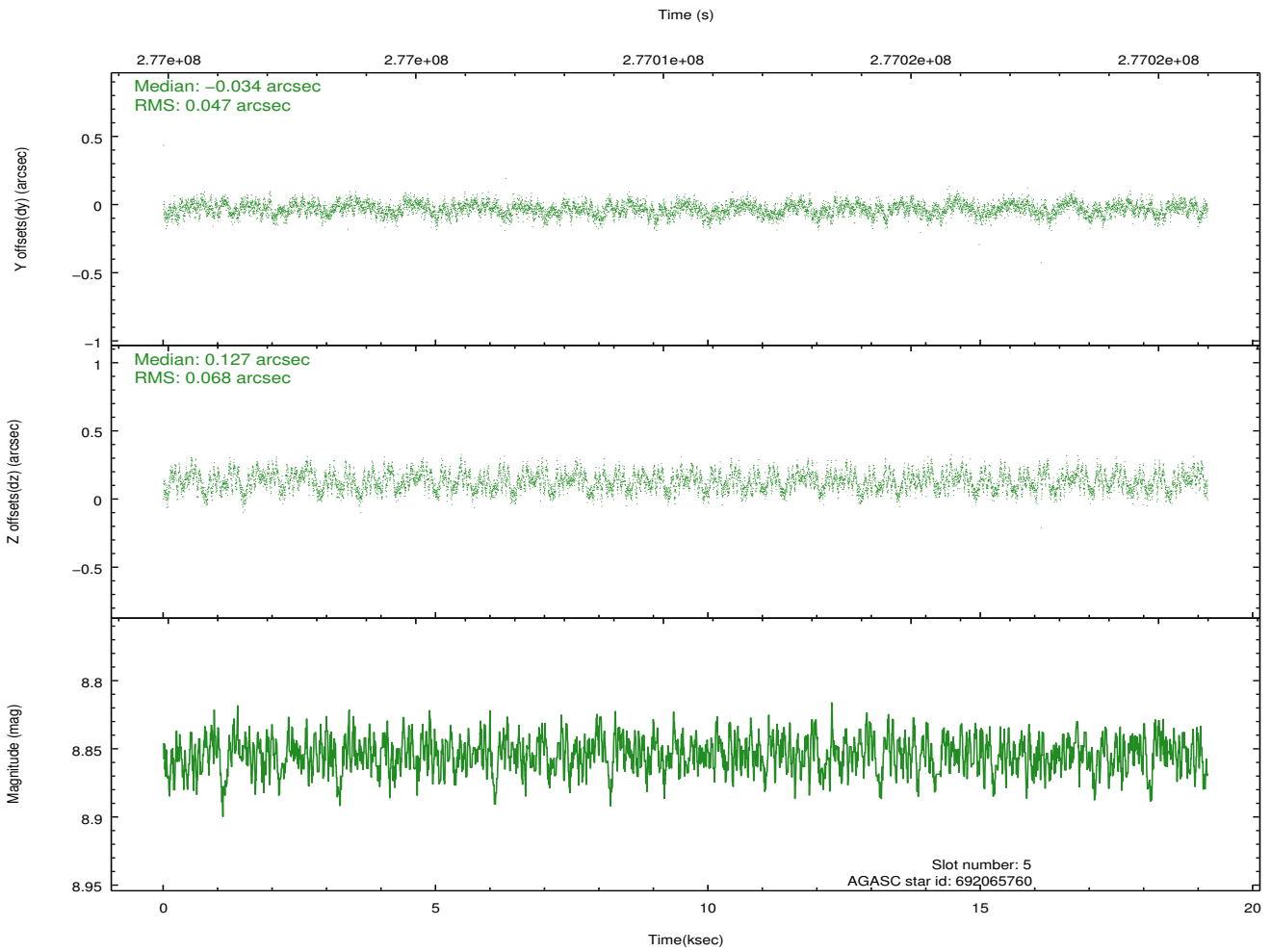
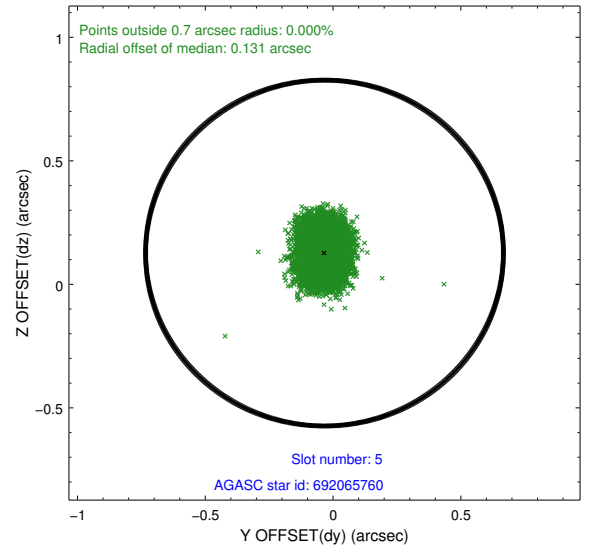
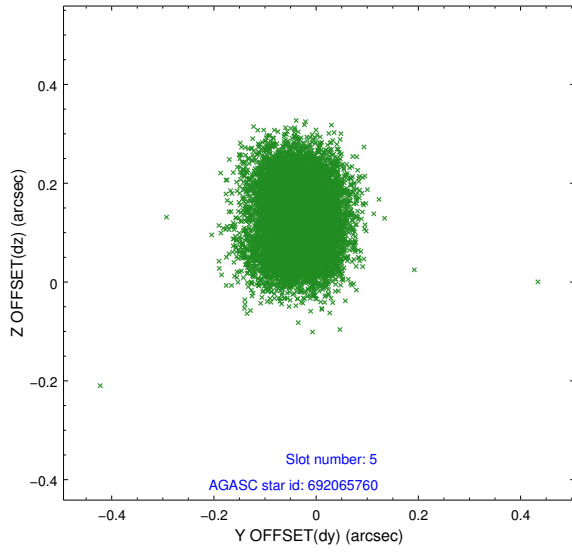
2.4.1 Slot 3



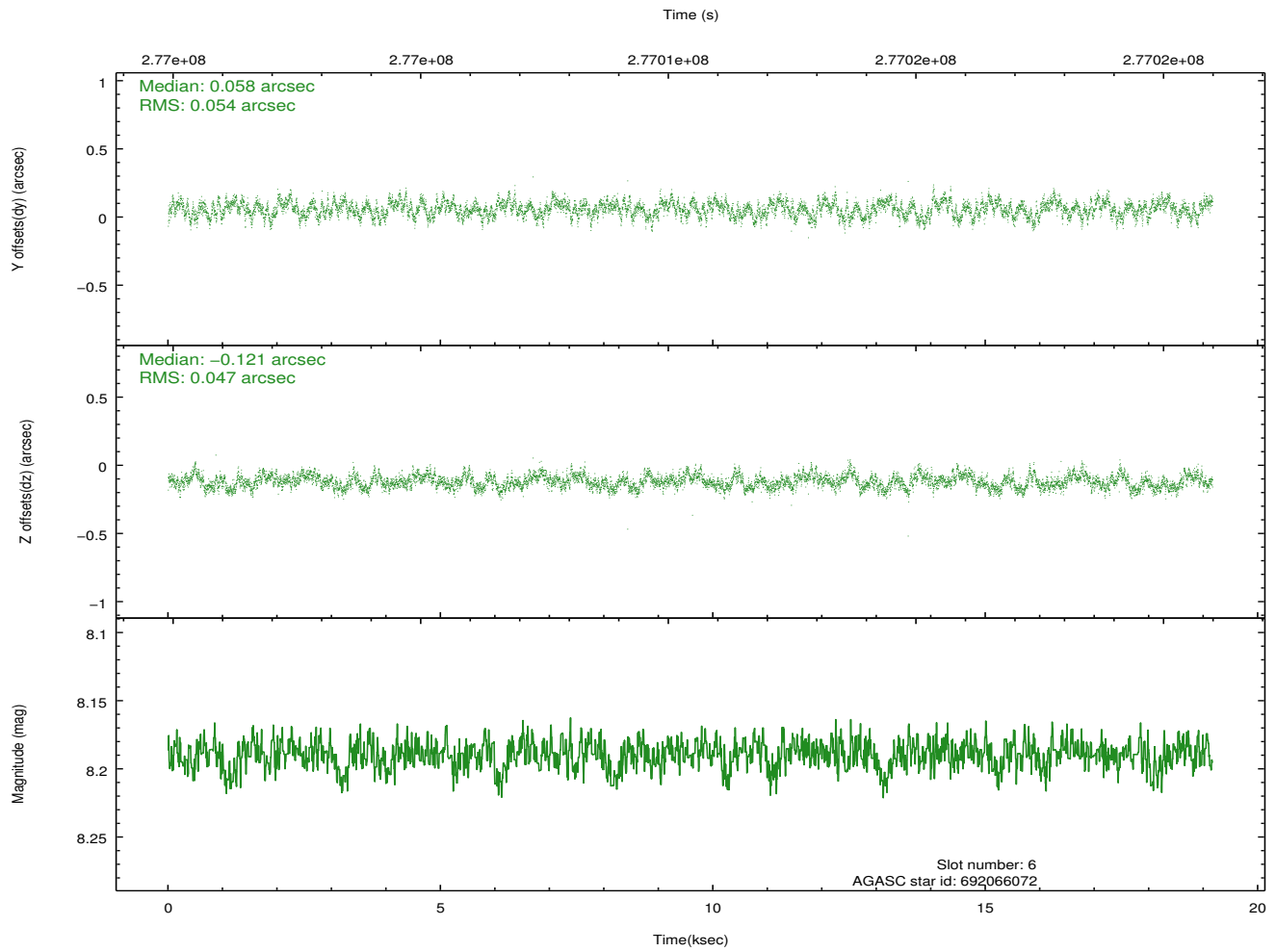
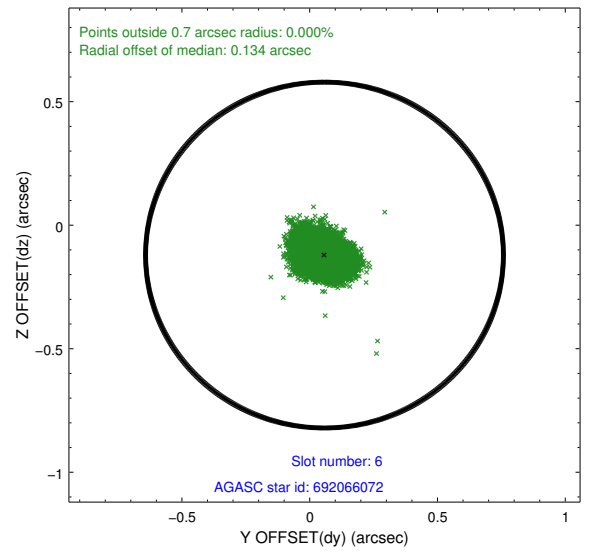
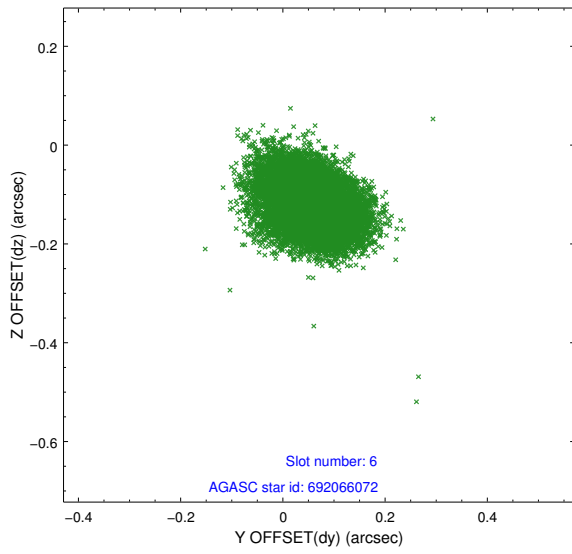
2.4.2 Slot 4



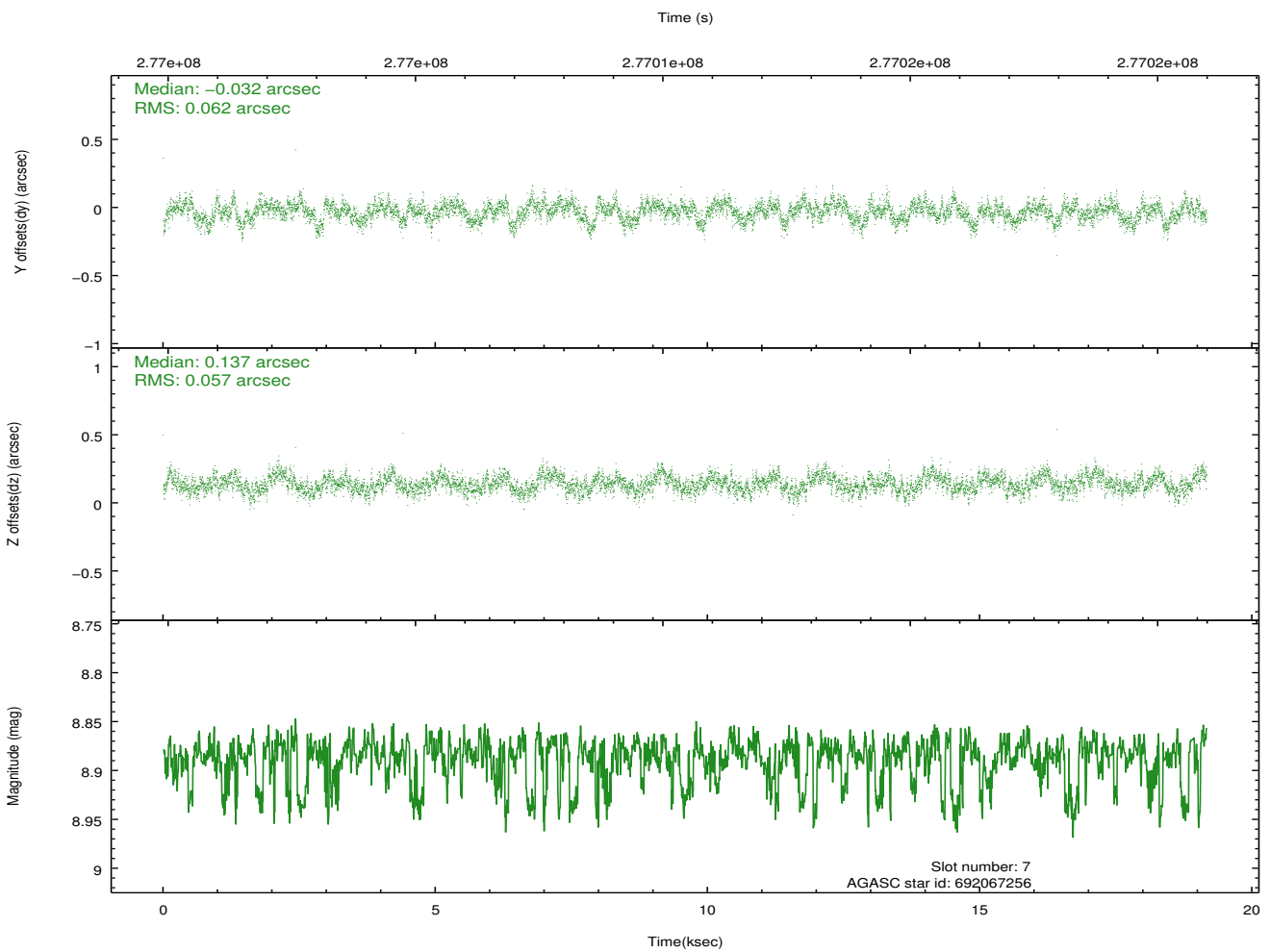
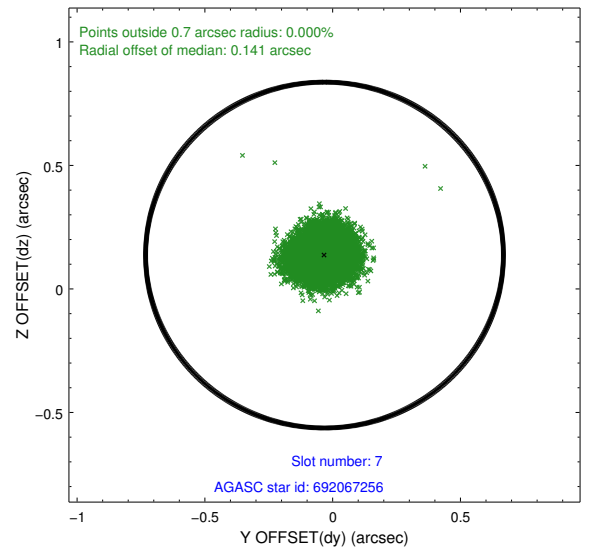
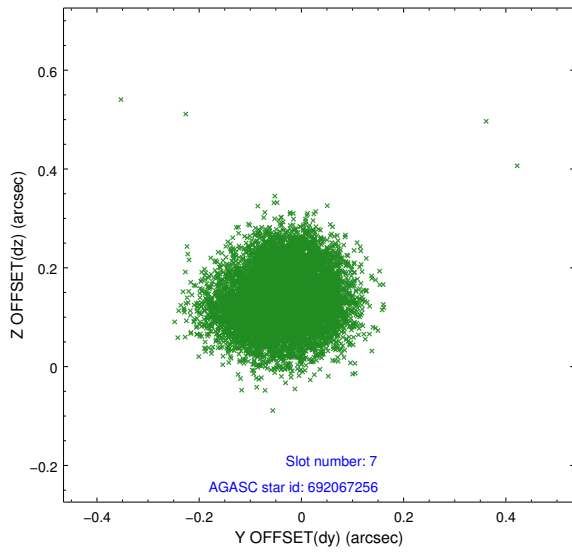
2.4.3 Slot 5



2.4.4 Slot 6

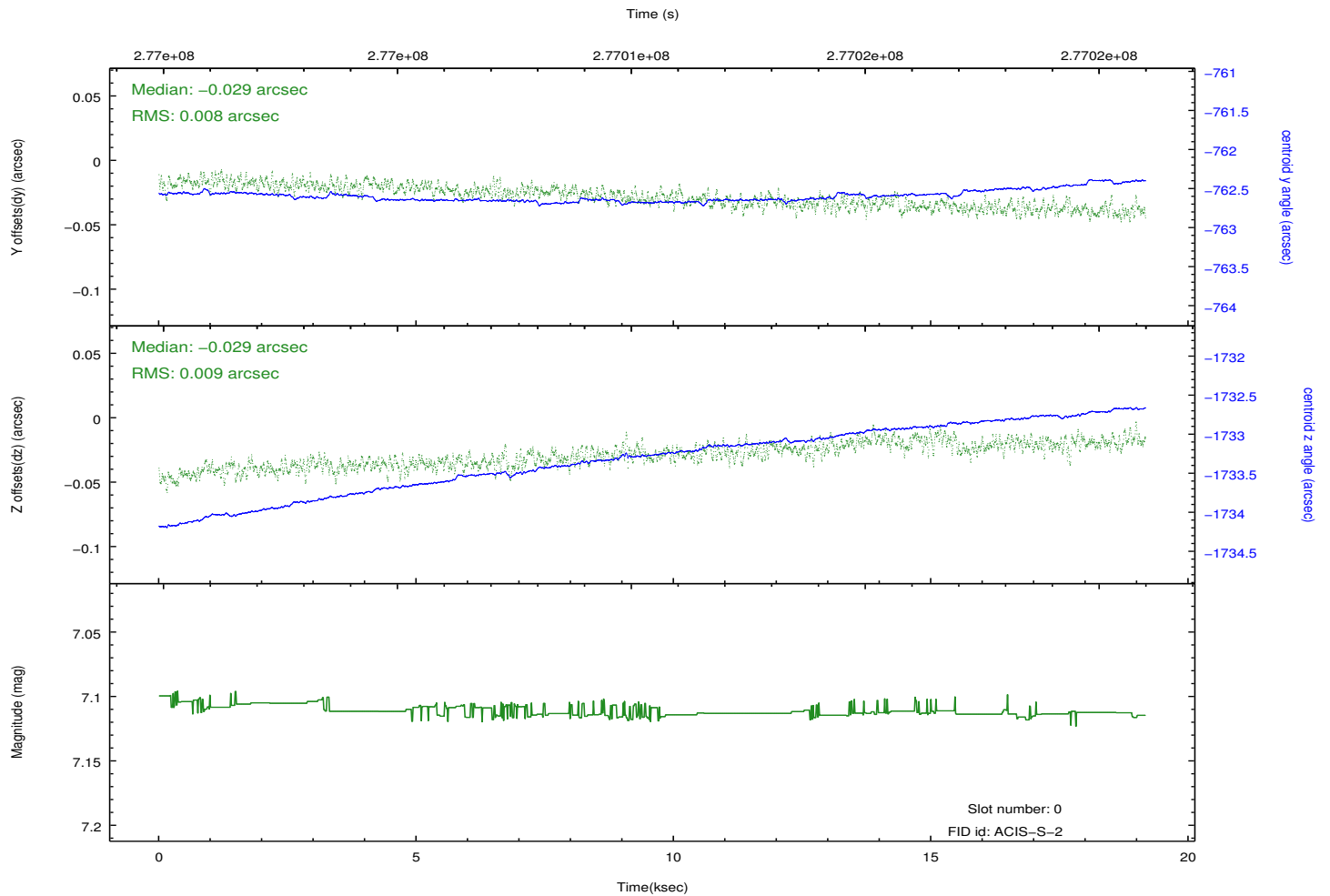
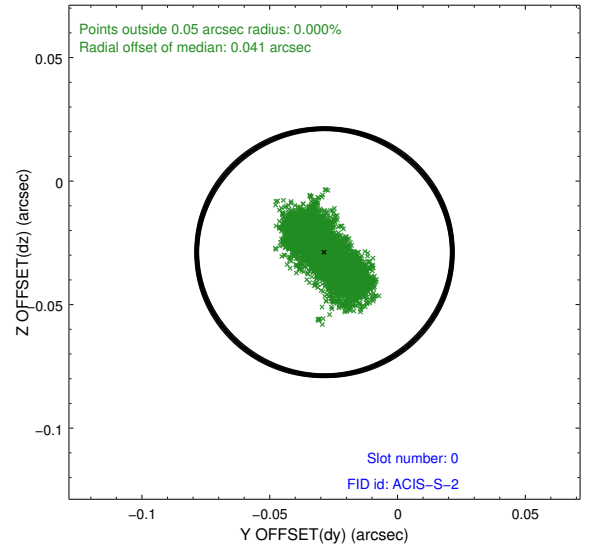
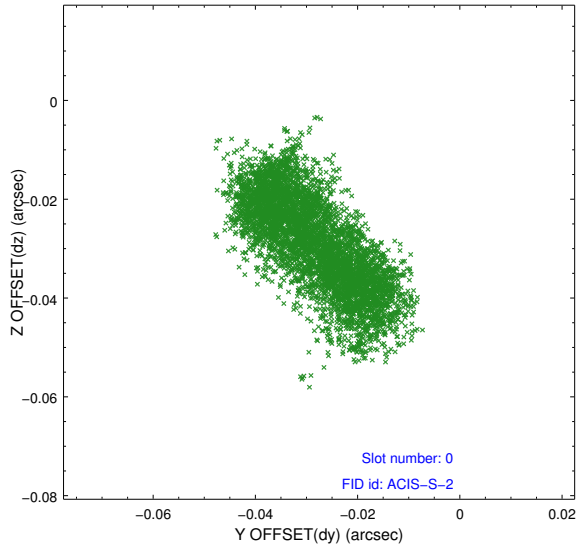


2.4.5 Slot 7

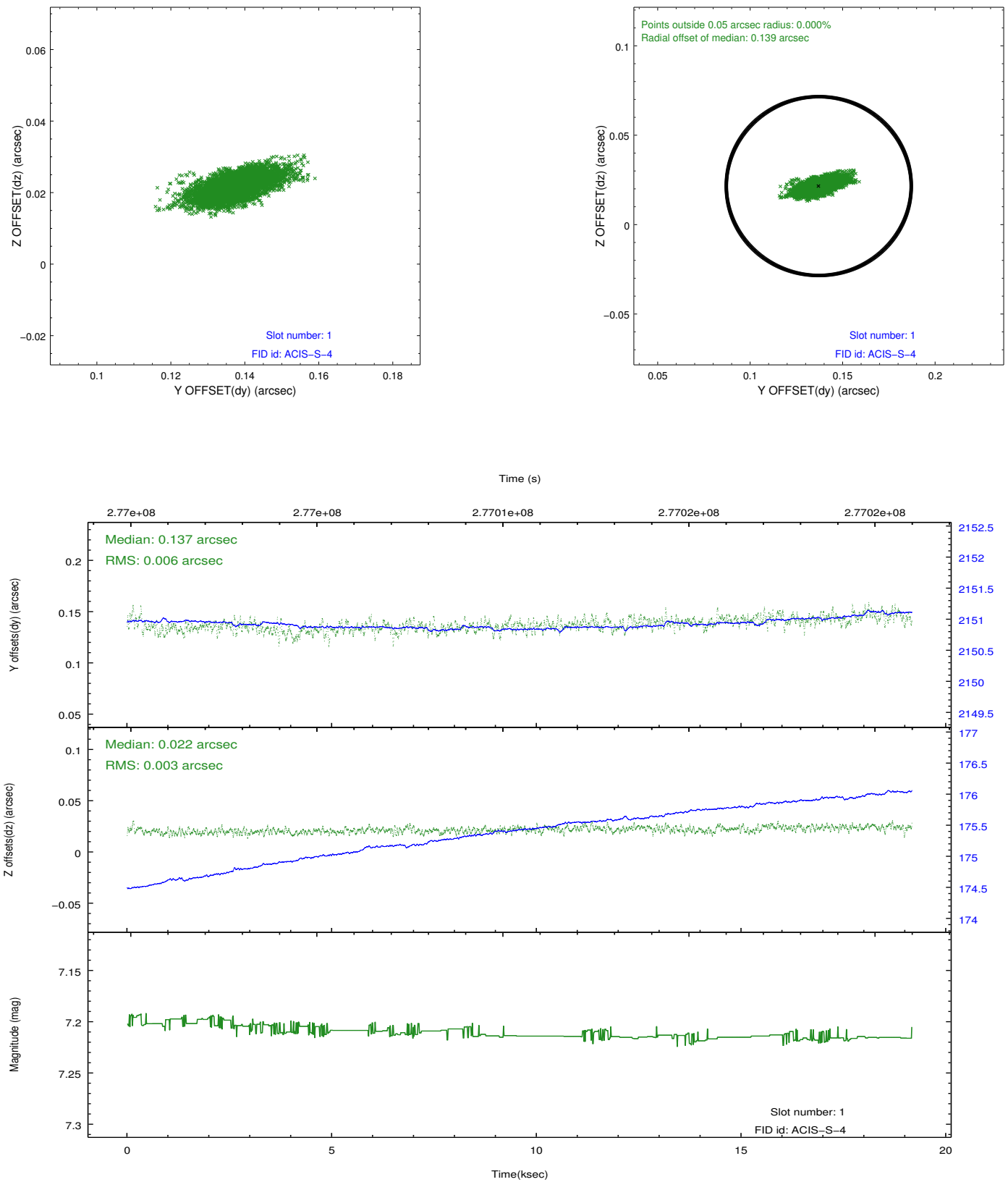


2.5 FID Slots

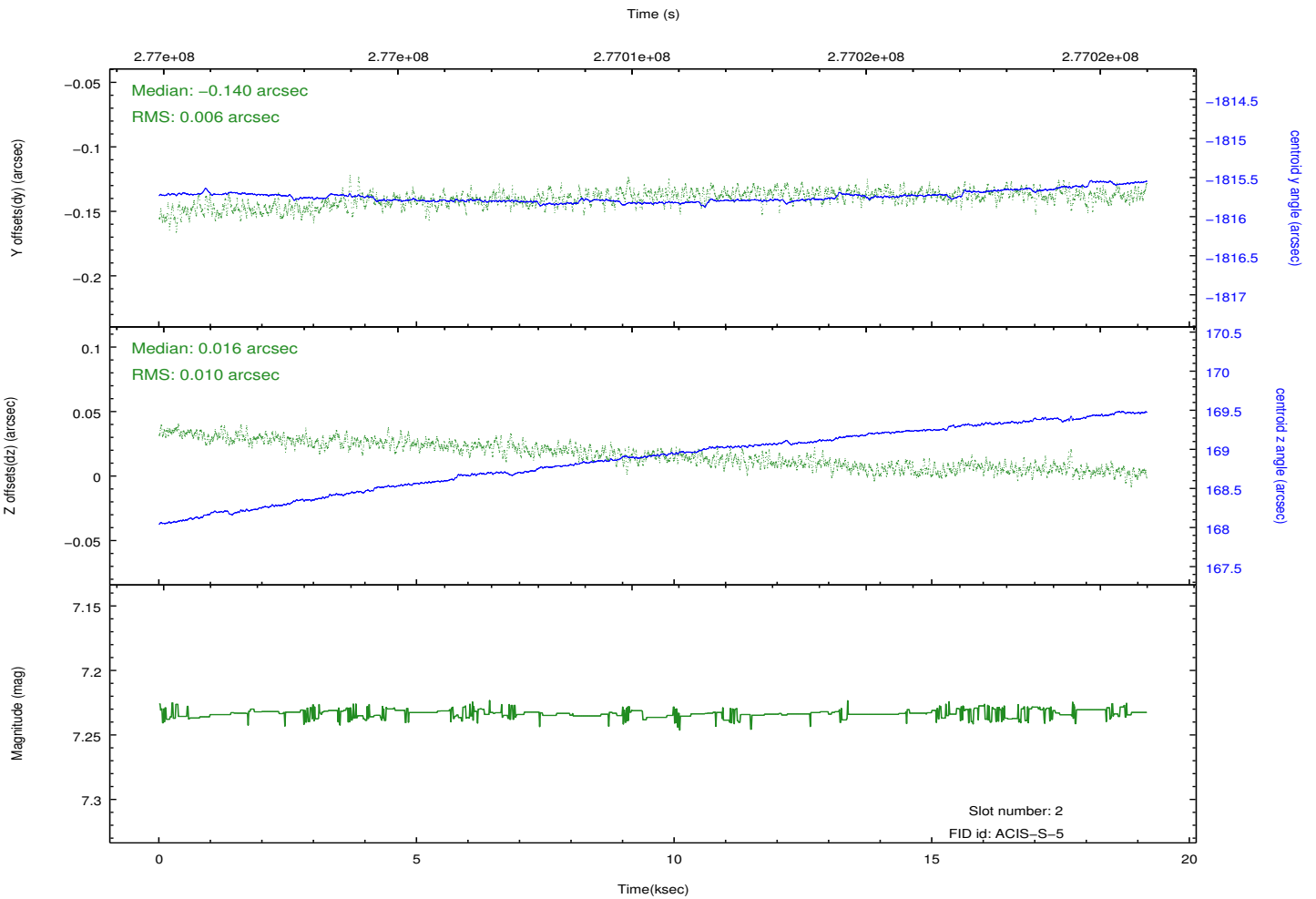
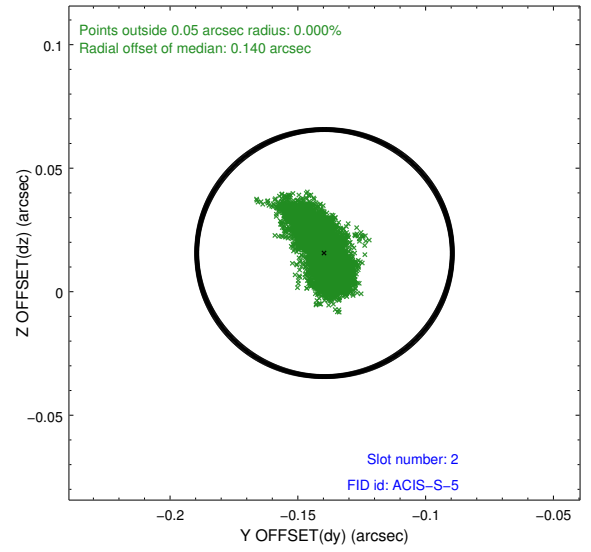
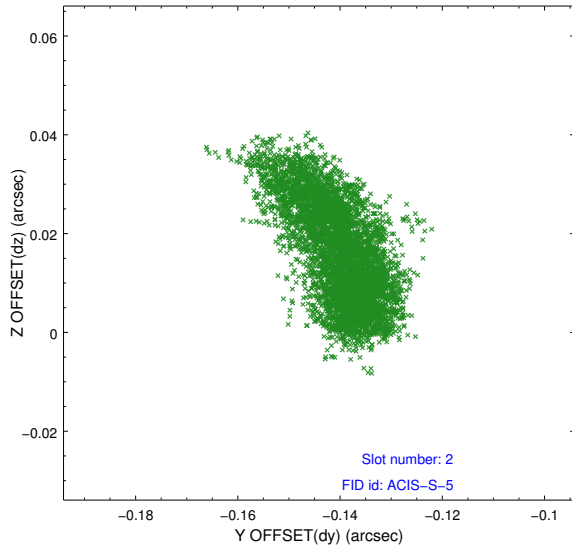
2.5.1 Slot 0



2.5.2 Slot 1



2.5.3 Slot 2



A Summary

A.1 Status

V&V Scientist	Beth Sundheim
V&V Date (YYYY-MM-DD)	2012.04.11
V&V Edition	1
V&V Disposition and Status	OK
V&V Charge Time	19.1611001

A.2 Comments