

# V&V Reference Report

## L2 ASCDS Version : 8.4.3.1

Observation 8479 - L2 Version 2  
Chandra X-Ray Center

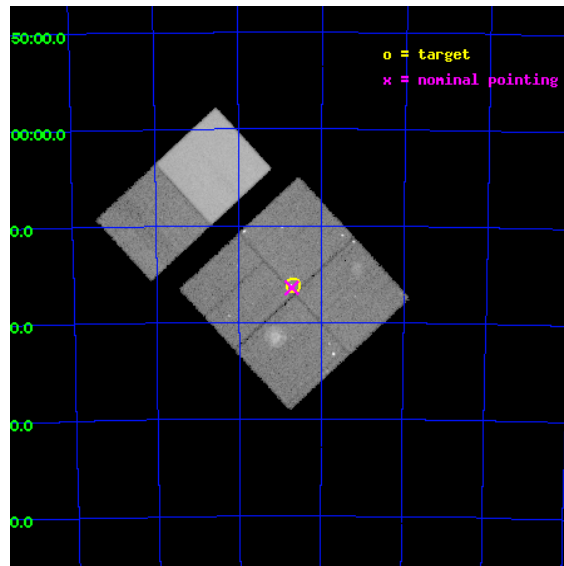
L2 Processing Date : Apr 14 2012

## Contents

<b>1</b>	<b>Front</b>	<b>2</b>
<b>2</b>	<b>OBI</b>	<b>3</b>
2.1	OBI . . . . .	3
2.1.1	Images . . . . .	3
2.1.2	Bias . . . . .	3
2.1.3	Parameters . . . . .	4
2.1.4	Events . . . . .	4
2.2	Compared Parameters . . . . .	5
2.3	Aspect . . . . .	6
2.4	Star Slots . . . . .	9
2.4.1	Slot 3 . . . . .	9
2.4.2	Slot 4 . . . . .	10
2.4.3	Slot 5 . . . . .	11
2.4.4	Slot 6 . . . . .	12
2.4.5	Slot 7 . . . . .	13
2.5	FID Slots . . . . .	14
2.5.1	Slot 0 . . . . .	14
2.5.2	Slot 1 . . . . .	15
2.5.3	Slot 2 . . . . .	16
<b>A</b>	<b>Summary</b>	<b>17</b>
A.1	Status . . . . .	17
A.2	Comments . . . . .	17

# 1 Front

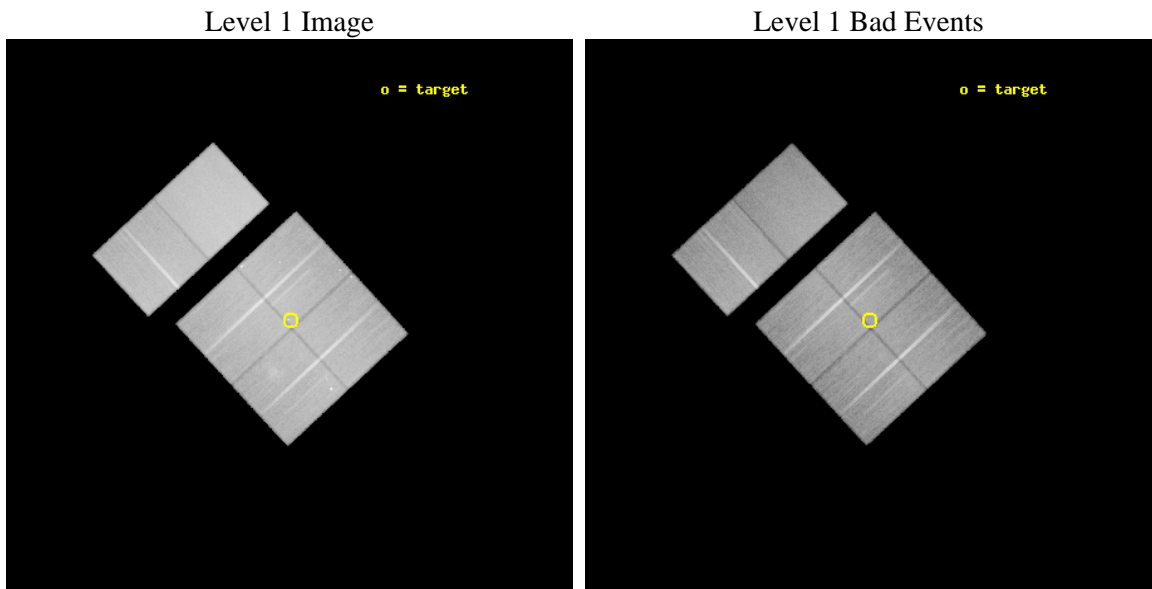
seq_num	600594	Sequence number
obs_id	8479	Observation id
title	A Deep X-ray Survey of the Small Magellanic Cloud	Proposal title
observer	Dr Andreas Zezas	Principal investigator
object	SMC Deep Field 2	Source name
dtcycle	0	&#160
cycle	P	events from which exps? Prim/Second/Both
ra_targ	12.6725	Observer's specified target RA [deg]
dec_targ	-73.269528	Observer's specified target Dec [deg]
ra_nom	12.679127040667	Nominal RA [deg]
dec_nom	-73.273774282929	Nominal Dec [deg]
roll_nom	317.21503332326	Nominal Roll [deg]
revision	2	Processing version of data
ontime	42636.799841225	Sum of GTIs [s]
livetime	42096.907008837	Livetime [s]
ontime0	42636.799841225	Sum of GTIs [s]
ontime1	42633.558970511	Sum of GTIs [s]
ontime2	42636.799841225	Sum of GTIs [s]
ontime3	42636.799841225	Sum of GTIs [s]
ontime6	42636.799841225	Sum of GTIs [s]
ontime7	42636.799841225	Sum of GTIs [s]
l2events	440560	Number of level 2 events



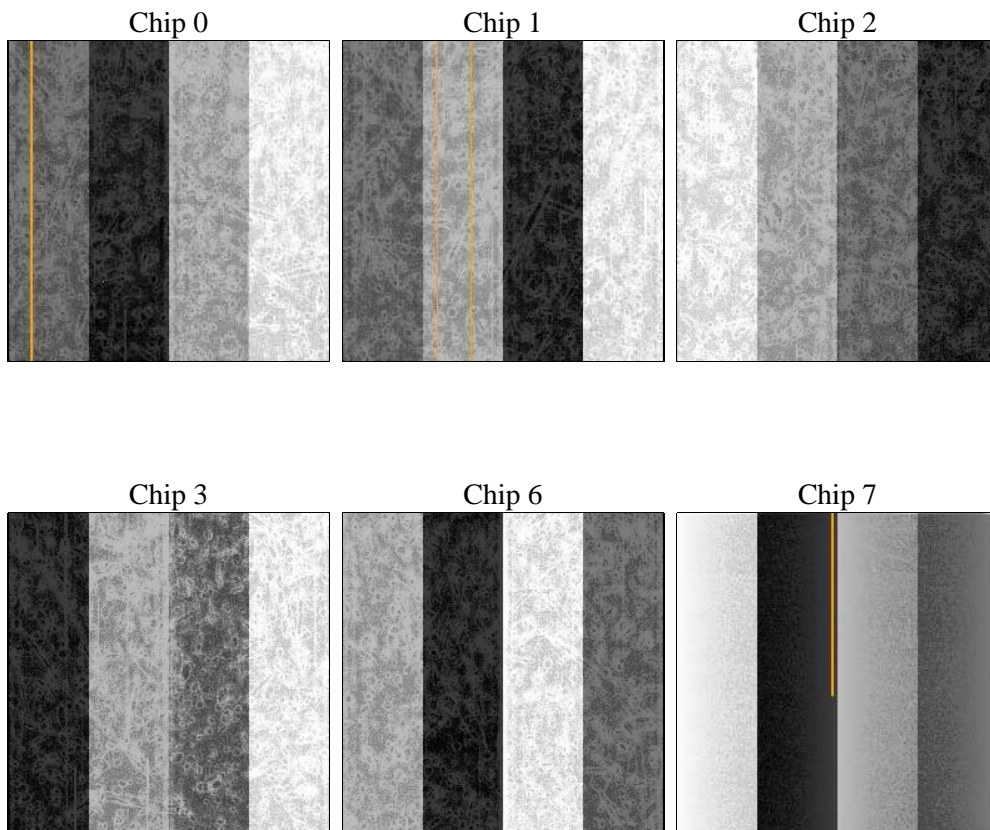
## 2 OBI

### 2.1 OBI

#### 2.1.1 Images



#### 2.1.2 Bias



### 2.1.3 Parameters

obi_num	0	Obi number	sched_exp_time	42542.753000	[s] Scheduled observation exposure time
ascdsver	8.4.3.1	Processing system revision	ontime	42636.799841225	Sum of GTIs [s]
caldbver	4.4.9	&#160	ontime0	42636.799841225	Sum of GTIs [s]
date	2012-04-14T05:28:32	Date and time of file creation	ontime1	42633.558970511	Sum of GTIs [s]
revision	2	Processing version of data	ontime2	42636.799841225	Sum of GTIs [s]
			ontime3	42636.799841225	Sum of GTIs [s]
			ontime6	42636.799841225	Sum of GTIs [s]
			ontime7	42636.799841225	Sum of GTIs [s]
			l1events	2512137	Number of level 1 events

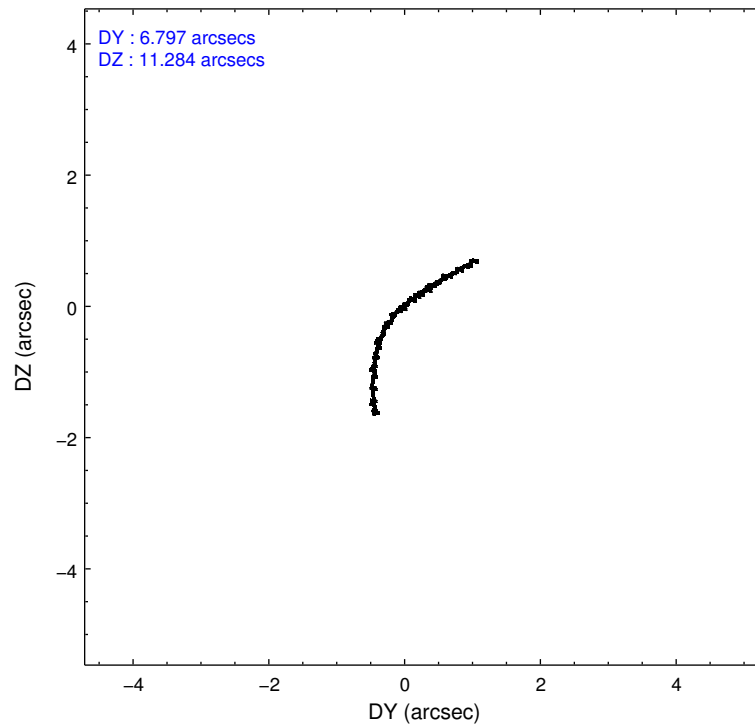
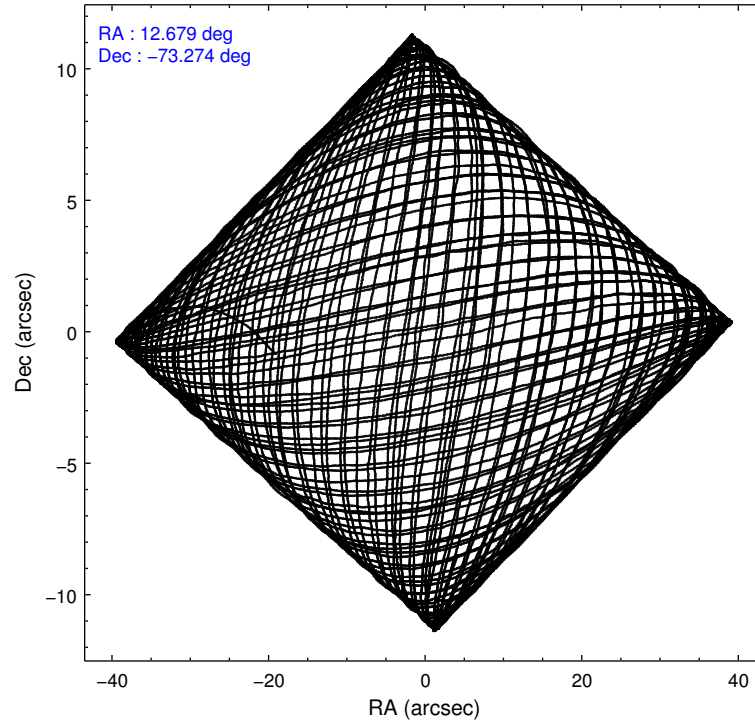
### 2.1.4 Events

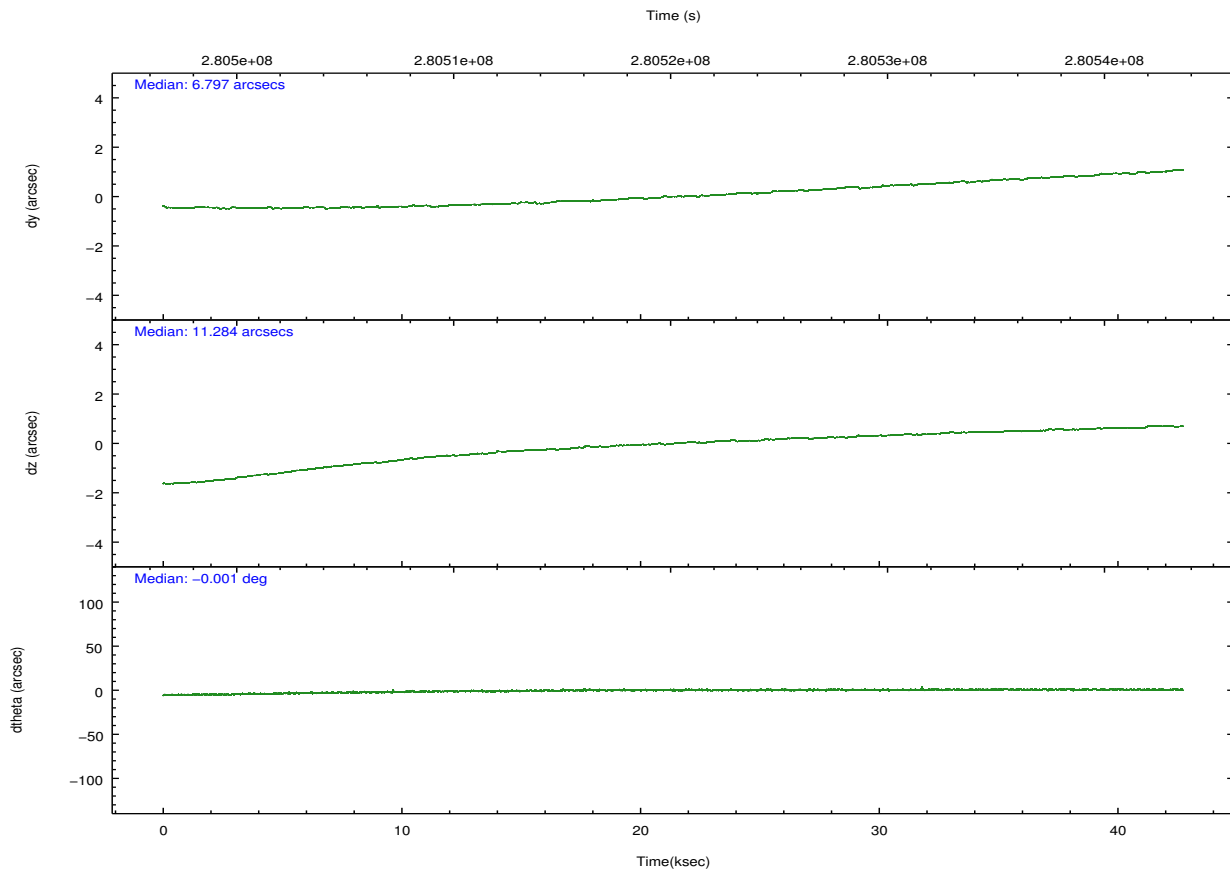
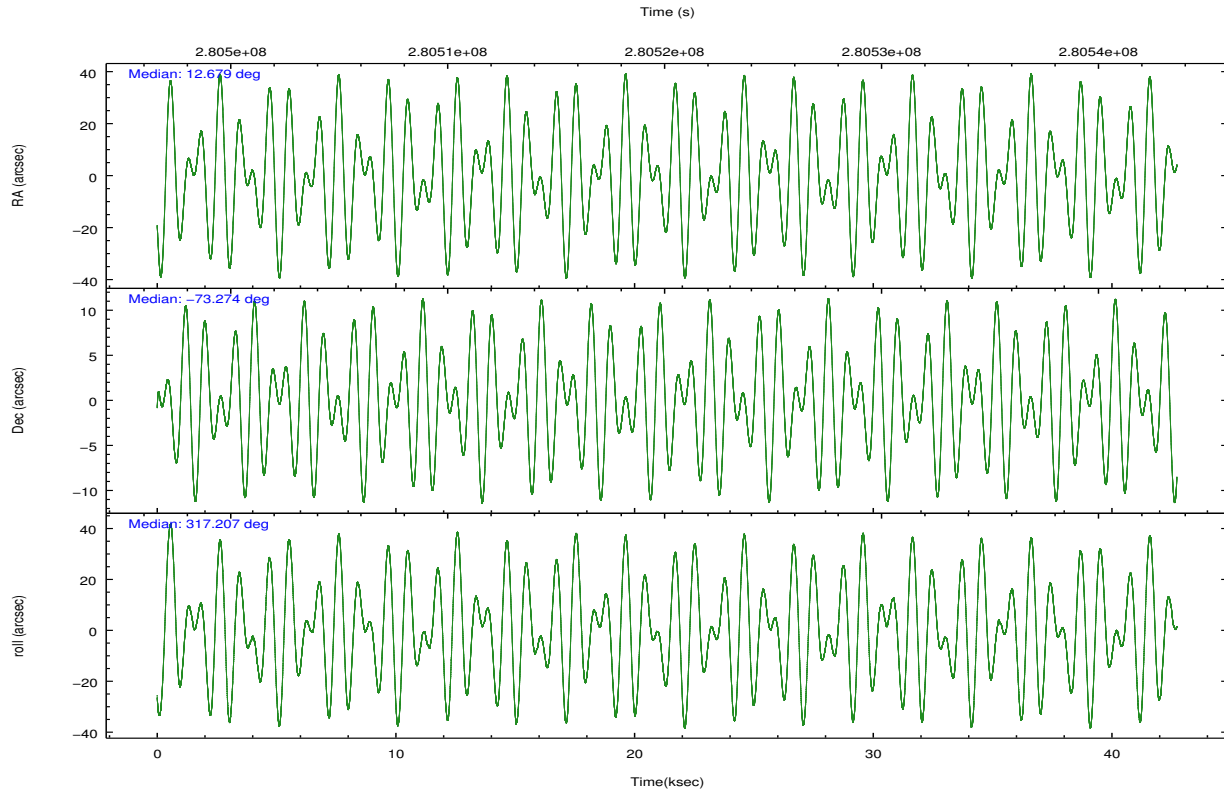
	ccd 0	ccd 1	ccd 2	ccd 3	ccd 6	ccd 7		ccd 0	ccd 1	ccd 2	ccd 3	ccd 6	ccd 7
level 1 events	377133	371213	403514	397685	420254	542338	grade 0 events	26926	20871	21482	23552	18505	19645
rejected events	321362	319168	356044	346667	372363	316947		7%	5%	5%	5%	4%	3%
rejected %	85%	85%	88%	87%	88%	58%	grade 1 events	279	205	267	304	245	570
								0%	0%	0%	0%	0%	0%
							grade 2 events	11240	11791	9749	9638	10728	45383
								2%	3%	2%	2%	2%	8%
							grade 3 events	4755	4856	4372	4642	4458	19534
								1%	1%	1%	1%	1%	3%
							grade 4 events	4456	4656	4424	4744	4493	18952
								1%	1%	1%	1%	1%	3%
							grade 5 events	15654	16911	15064	18112	18745	51195
								4%	4%	3%	4%	4%	9%
							grade 6 events	8400	9877	7446	8446	9708	121889
								2%	2%	1%	2%	2%	22%
							grade 7 events	305423	302046	340710	328247	353372	265170
								80%	81%	84%	82%	84%	48%

## 2.2 Compared Parameters

Parameter	Planned	Actual	Parameter	Planned	Actual
Instrument	ACIS	ACIS	Obspar format version number	7	7
Detector	ACIS-012367	ACIS-012367	Obspar file type	PREDICTED	ACTUAL
Grating	NONE	NONE	Obspar update status	NONE	UPDATED
Data mode	FAINT	FAINT	Number of optional ACIS chips dropped	0	0
Observation mode	POINTING	POINTING	On-chip summing requested	N	N
[deg] Pointing RA	12.586275	12.67912704066725	Subarray requested	NONE	NONE
[deg] Pointing Dec	-73.267768	-73.27377428292887	Alternating exposures requested	N	N
[deg] Pointing Roll	316.917428	317.2150333232604	[s] Primary exposure time	0.000000	3.2
[mm] SIM focus pos	-0.782348	-0.7809083437167272			
[mm] SIM defocus	0	0.001439871863259334			
[mm] SIM translation stage pos	-233.592463	-233.5874344608287			
[mm] SIM translation stage offset	0	-0.005018542100998502			
[s] Observation start time (MET)	280498932.184000	280497899.7146			
Observation start date	2006-11-21T12:21:07	2006-11-21T12:04:59			
[s] Observation end time (MET)	280541474.184000	280541715.39167			
Observation end date	2006-11-22T00:10:09	2006-11-22T00:15:15			
Read mode	TIMED	TIMED			

## 2.3 Aspect



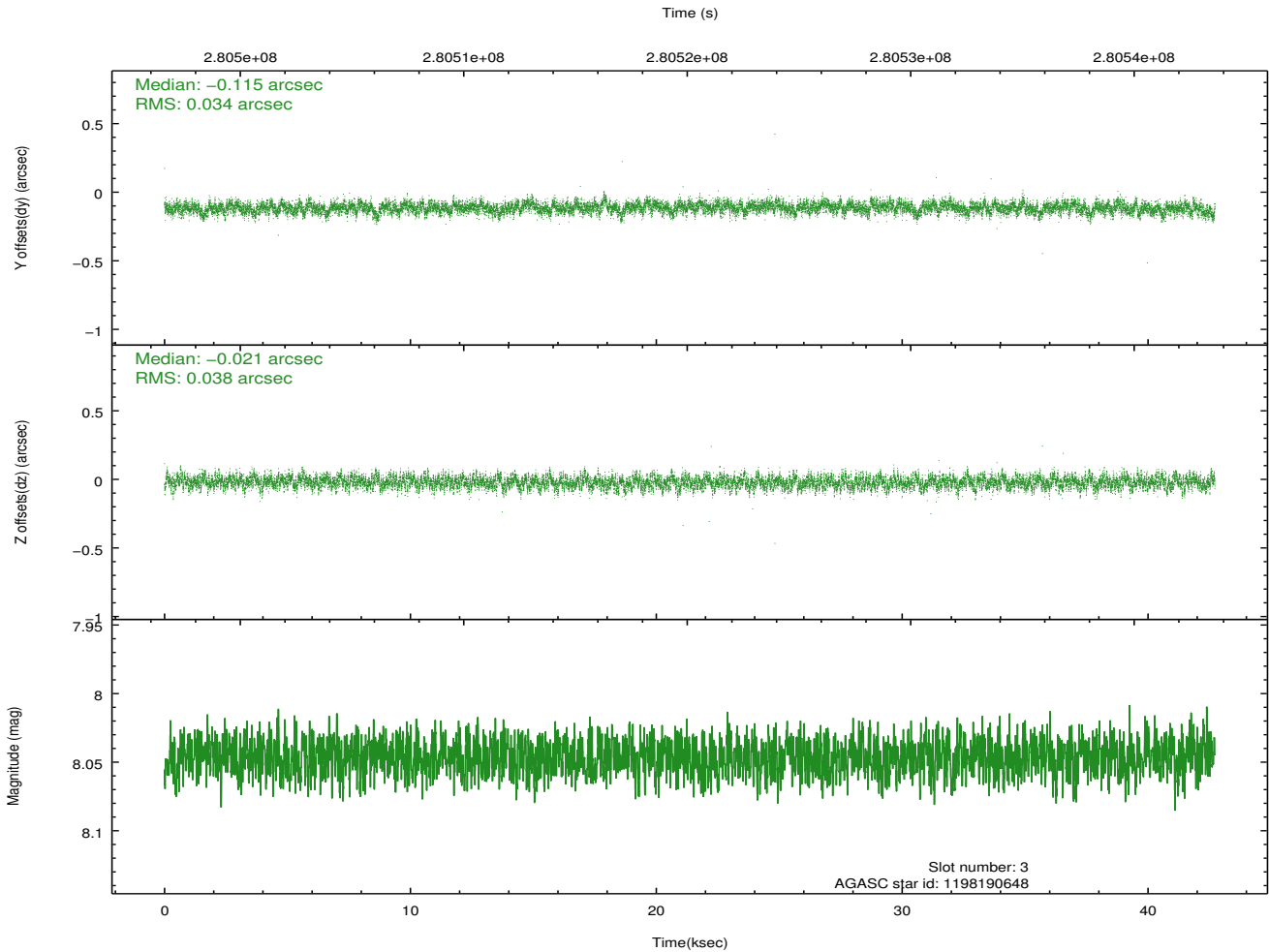
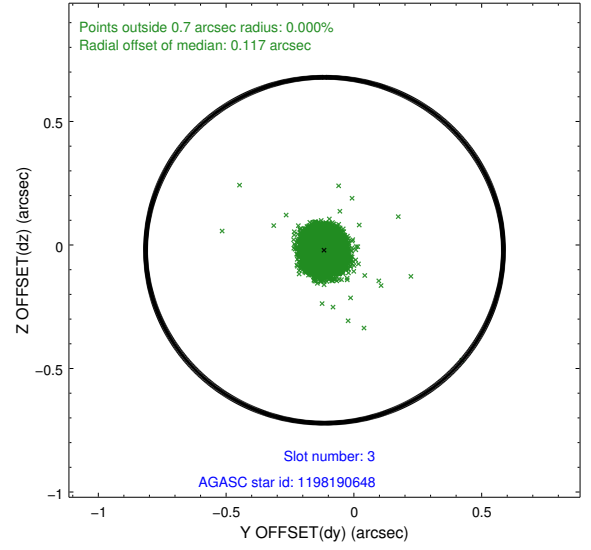
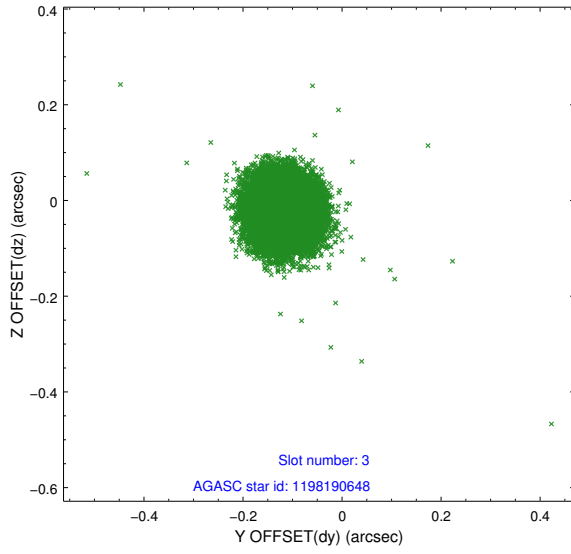


### Slot Statistics

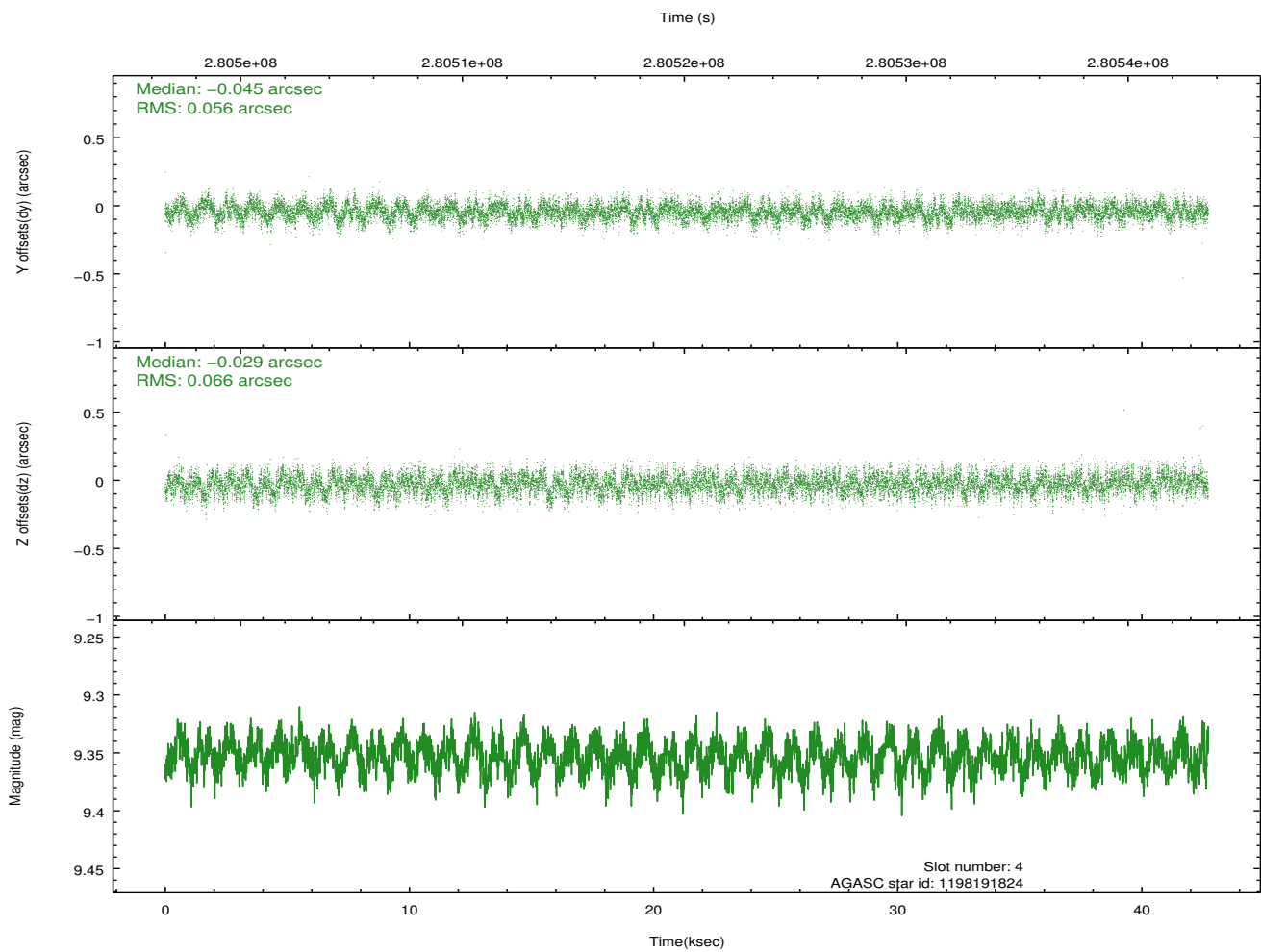
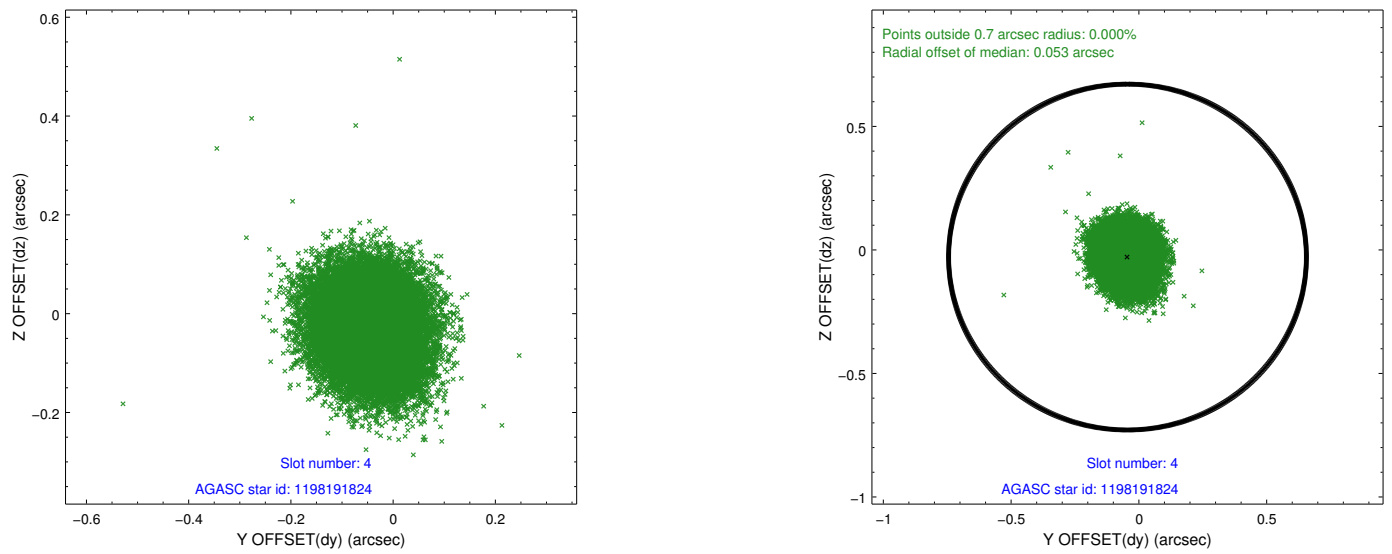
slot	status	id	mag	n_pts	med_dy	med_dz	dr1	dr2	ra	dec	mean_y	mean_z
0	FID	ACIS-I-1	7.24	10421	0.047	-0.045	0.021	0.062	0.000000	0.000000	932.83	-834.67
1	FID	ACIS-I-5	7.23	10419	-0.167	0.057	0.024	0.035	0.000000	0.000000	-1815.47	1062.94
2	FID	ACIS-I-6	7.25	10421	0.032	0.059	0.011	0.027	0.000000	0.000000	398.38	1707.43
3	GUIDE	1198190648	8.05	20830	-0.115	-0.021	0.054	0.087	12.344115	-73.478663	338.37	-724.01
4	GUIDE	1198191824	9.35	20830	-0.045	-0.029	0.092	0.147	11.519918	-73.478175	-272.71	-1305.74
5	GUIDE	1198192088	9.21	20825	0.034	0.037	0.127	0.193	11.250657	-73.229216	-1096.91	-857.50
6	GUIDE	1198192408	9.42	20754	0.053	-0.036	0.113	0.184	12.860639	-72.678863	-1232.56	1748.83
7	GUIDE	1198192456	8.61	20830	0.070	0.050	0.114	0.173	13.422921	-73.869405	2095.14	-1014.03

## 2.4 Star Slots

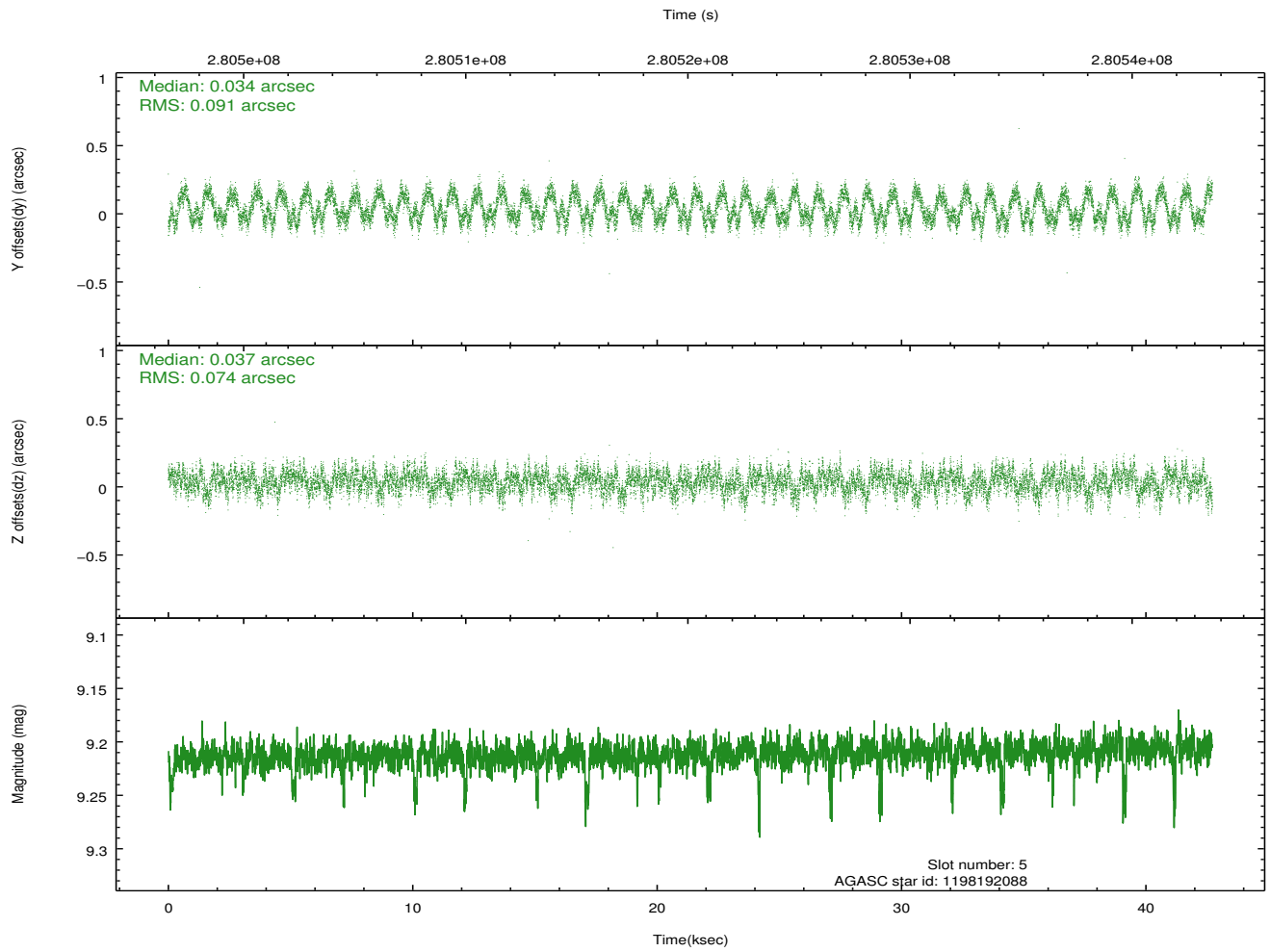
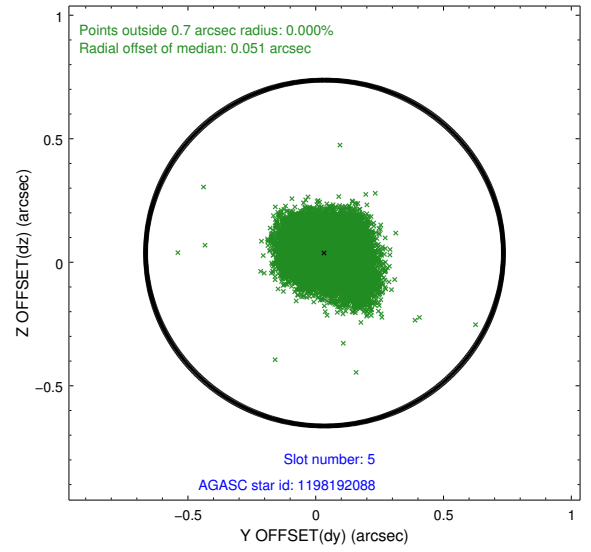
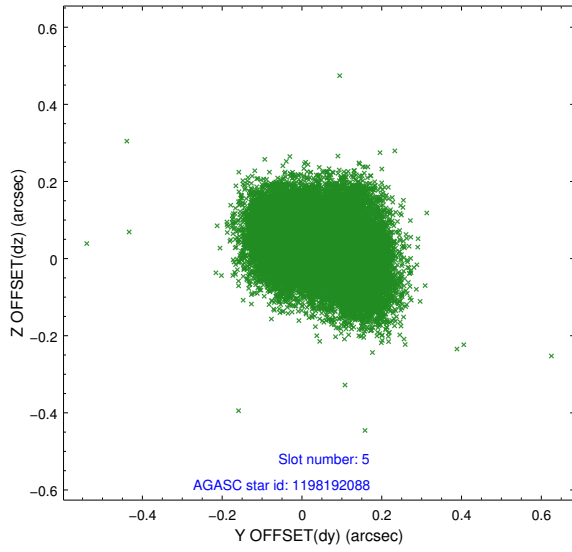
### 2.4.1 Slot 3



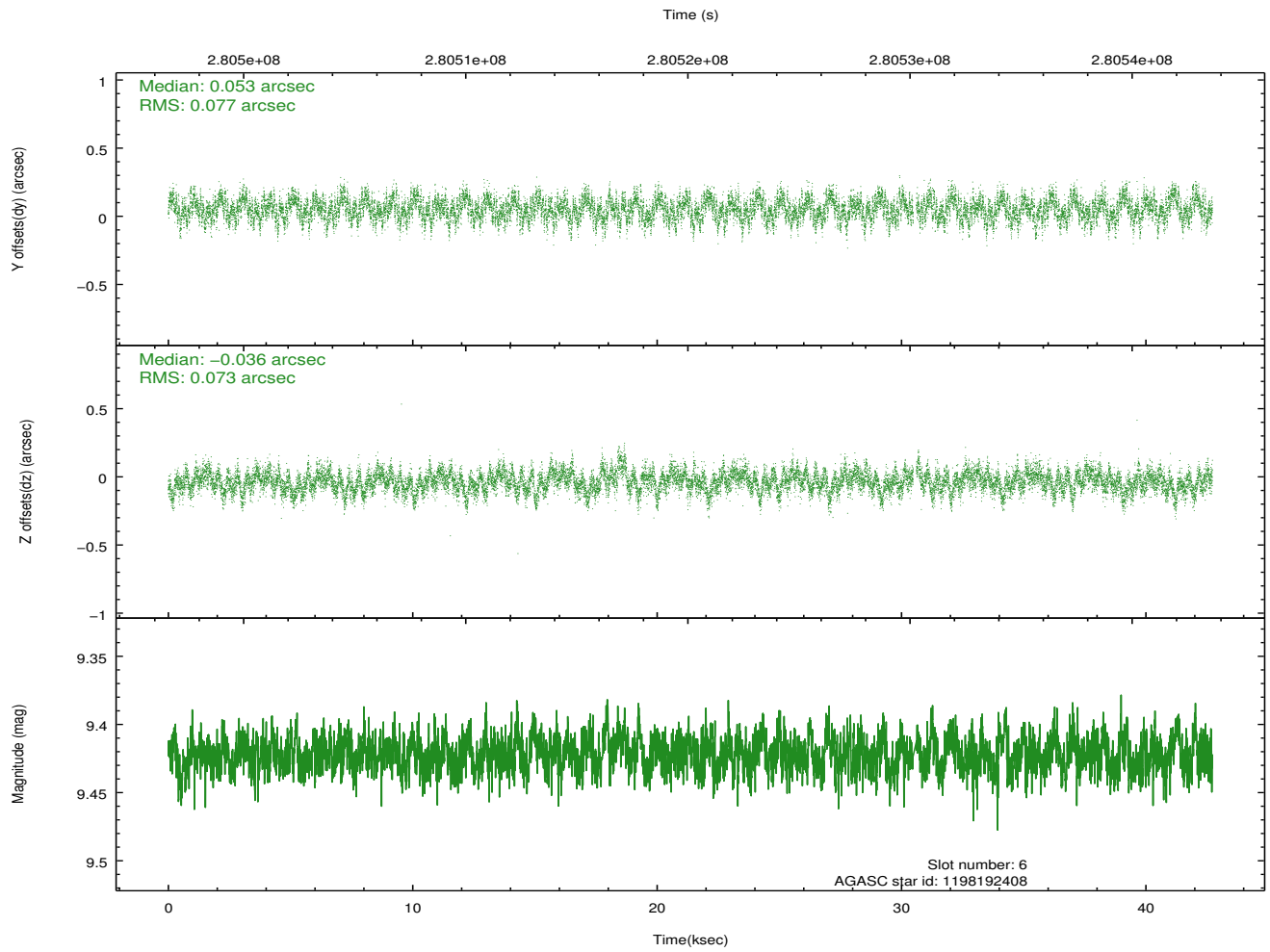
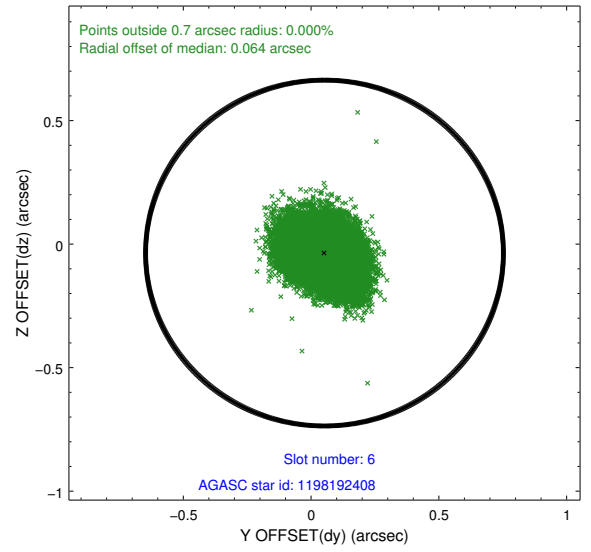
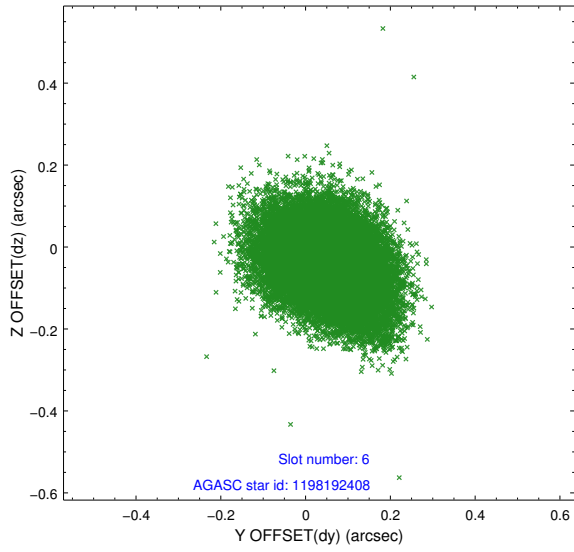
## 2.4.2 Slot 4



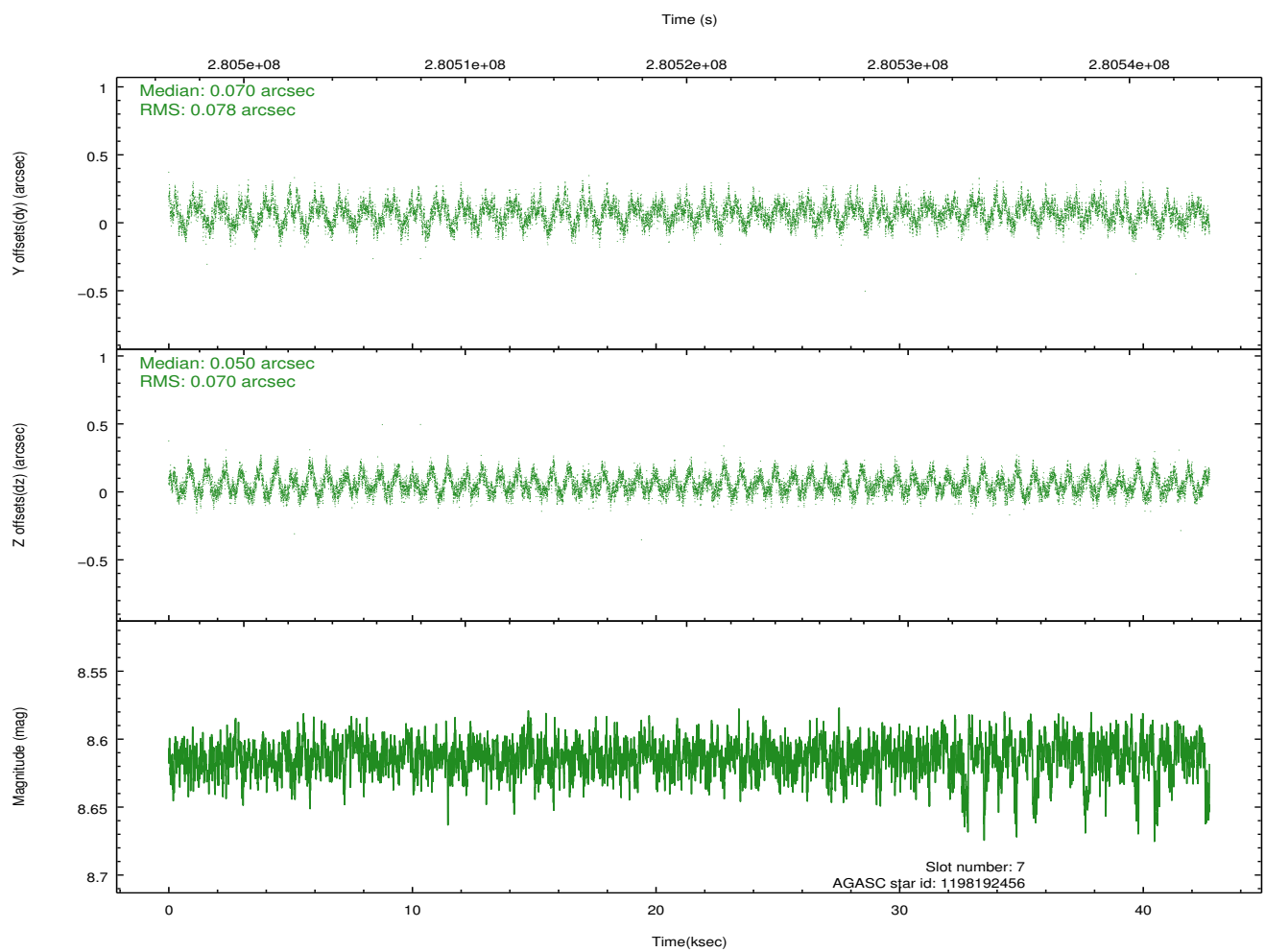
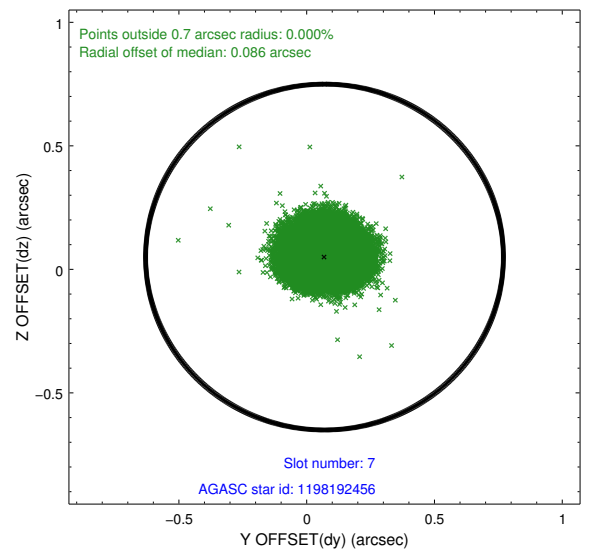
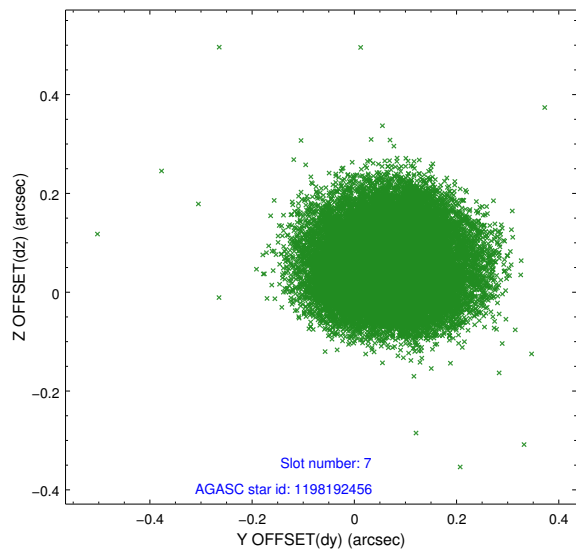
### 2.4.3 Slot 5



### 2.4.4 Slot 6

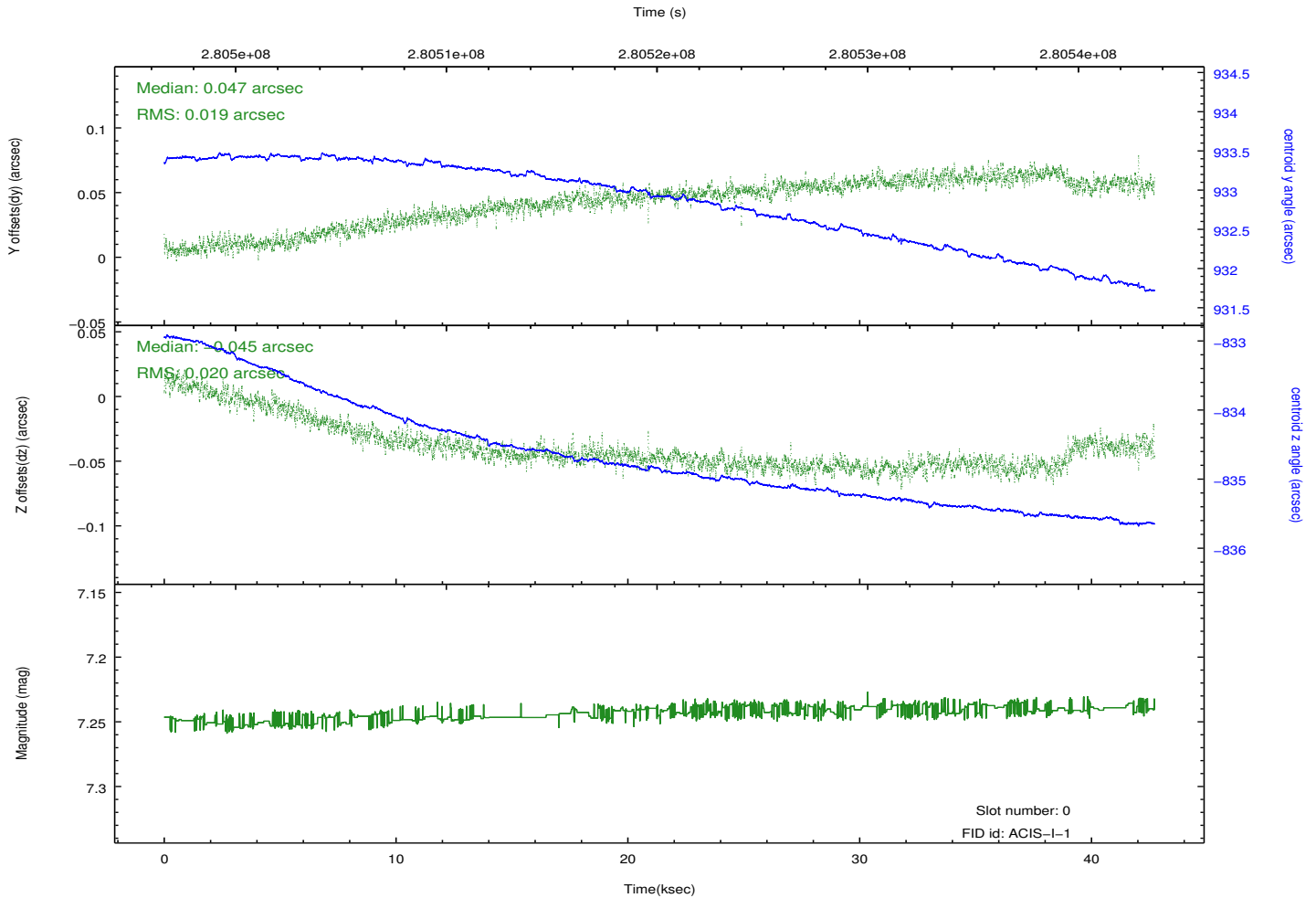
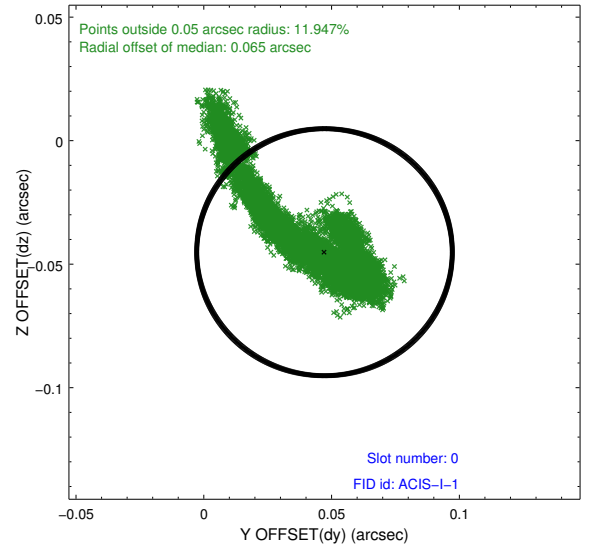
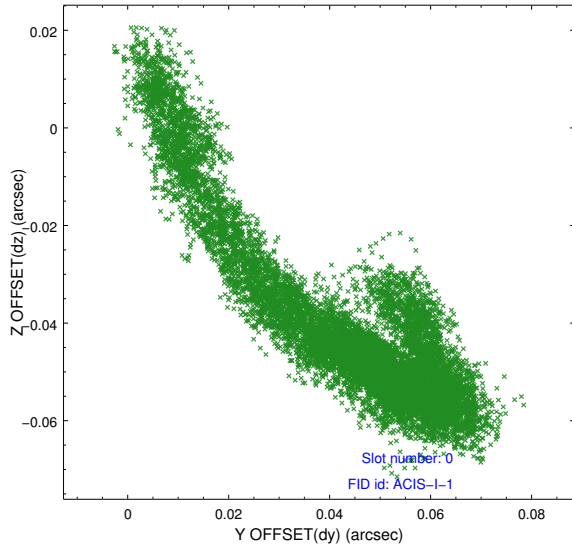


### 2.4.5 Slot 7

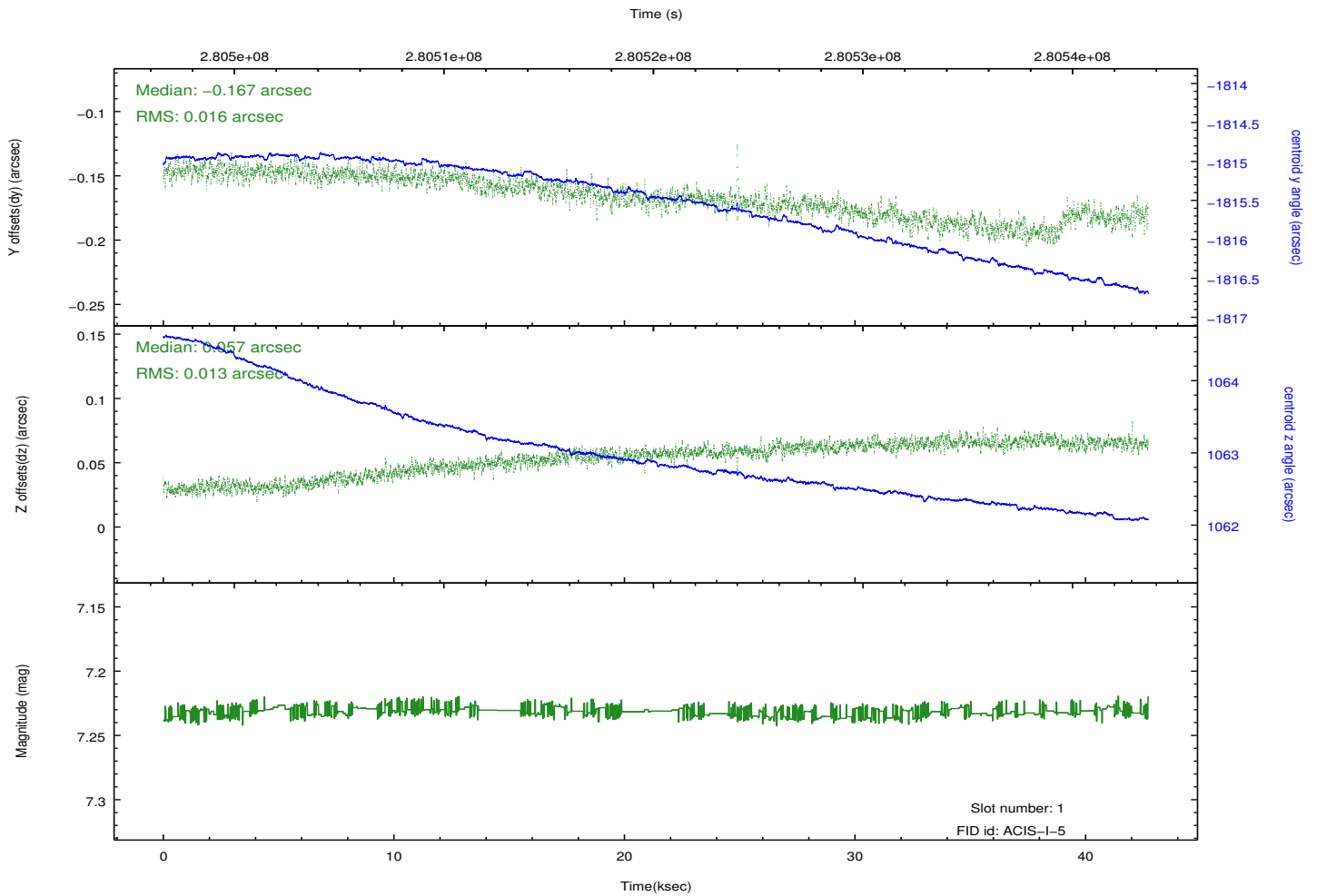
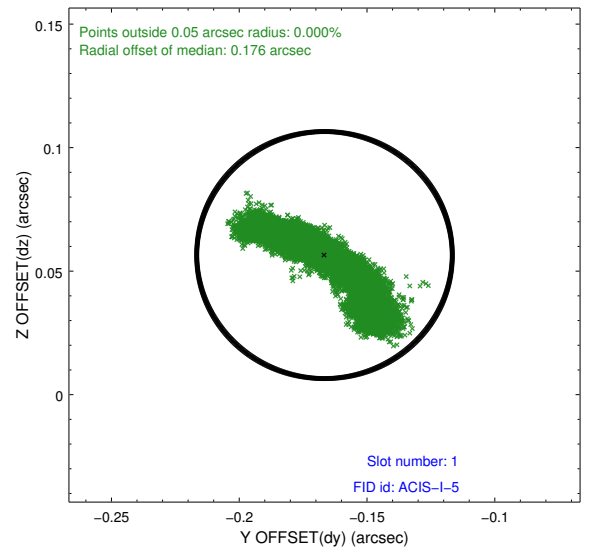
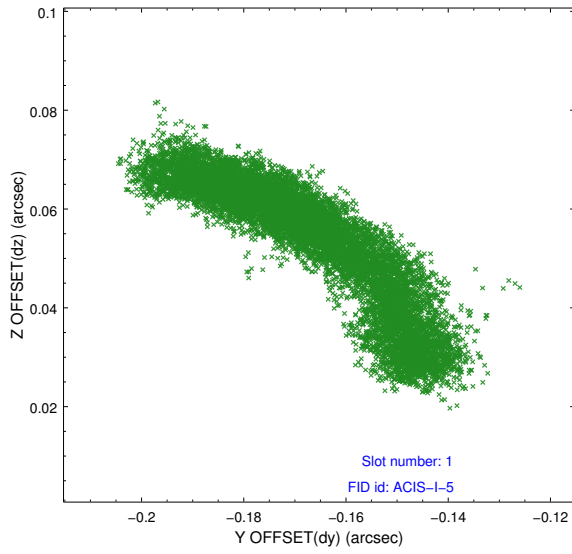


## 2.5 FID Slots

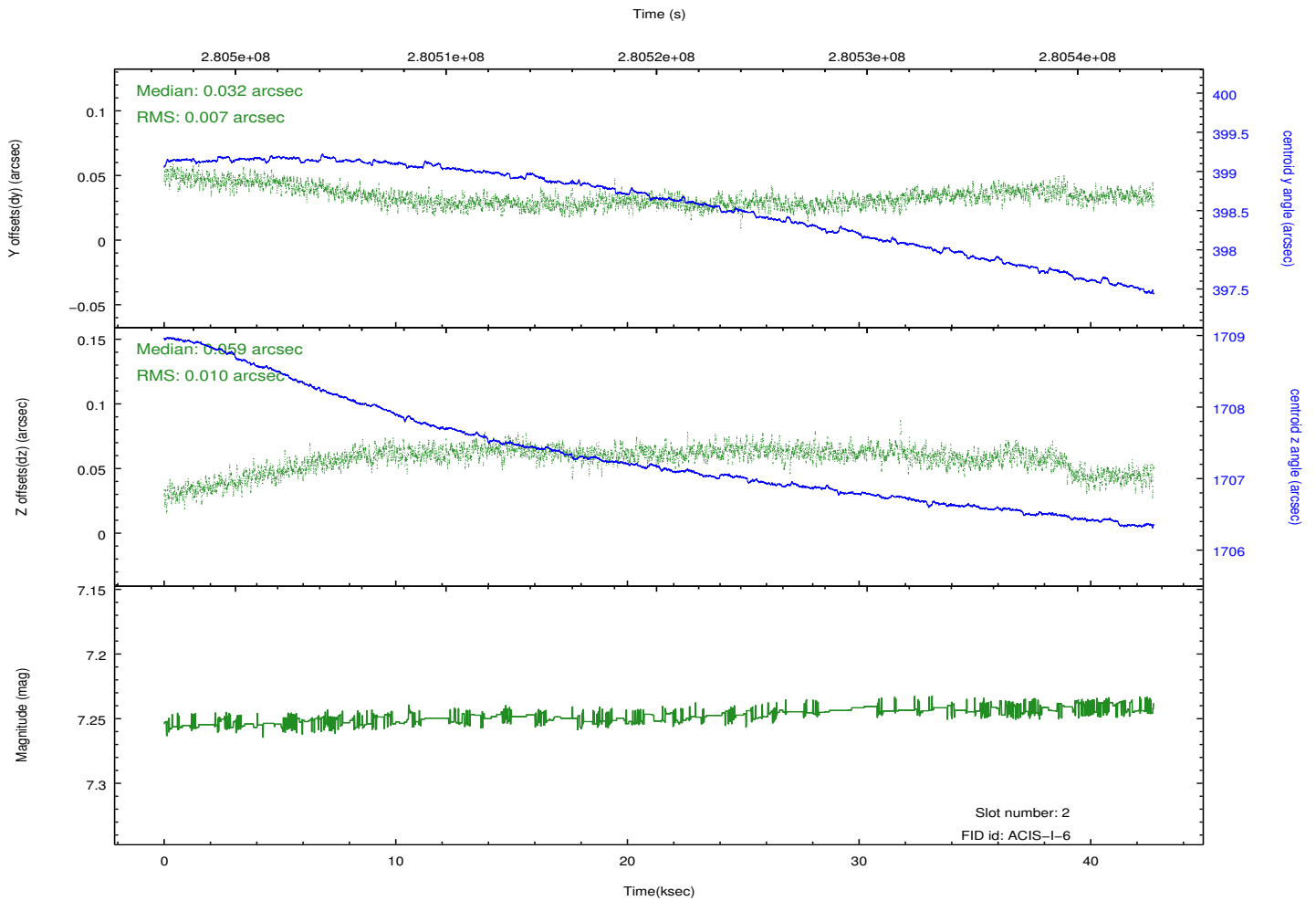
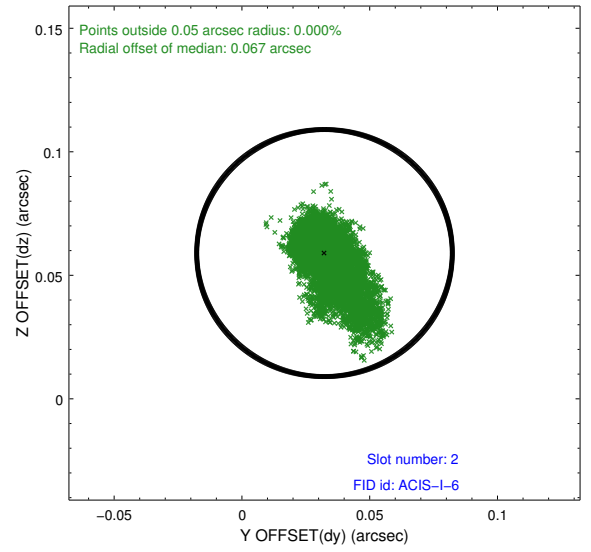
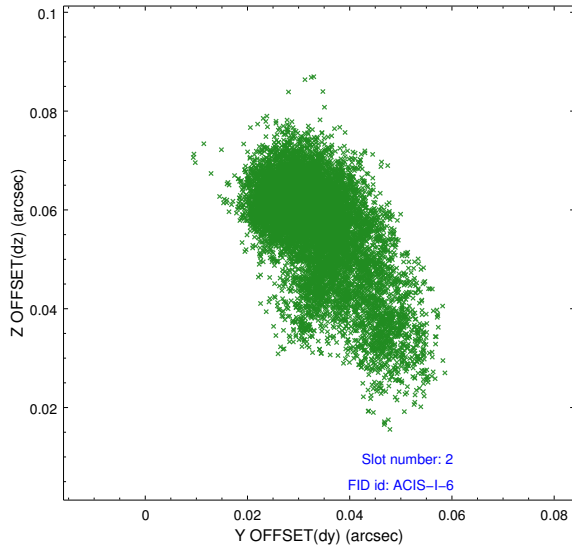
### 2.5.1 Slot 0



## 2.5.2 Slot 1



### 2.5.3 Slot 2



# A Summary

## A.1 Status

V&V Scientist	Jen Lauer
V&V Date (YYYY-MM-DD)	2012.04.17
V&V Edition	1
V&V Disposition and Status	OK
V&V Charge Time	42.6367998

## A.2 Comments