

V&V Reference Report

L2 ASCDS Version : 8.4.4

Observation 8529 - L2 Version 3
Chandra X-Ray Center

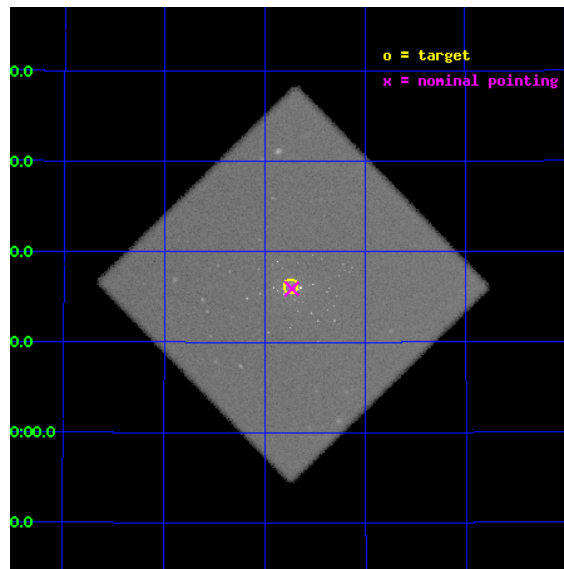
L2 Processing Date : Aug 12 2012

Contents

1	Front	2
2	OBI	3
2.1	OBI	3
2.1.1	Images	3
2.1.2	Parameters	4
2.1.3	Events	4
2.2	Compared Parameters	5
2.3	Aspect	6
2.4	Star Slots	9
2.4.1	Slot 3	9
2.4.2	Slot 4	10
2.4.3	Slot 5	11
2.4.4	Slot 6	12
2.4.5	Slot 7	13
2.5	FID Slots	14
2.5.1	Slot 0	14
2.5.2	Slot 1	15
2.5.3	Slot 2	16
A	Summary	17
A.1	Status	17
A.2	Comments	17

1 Front

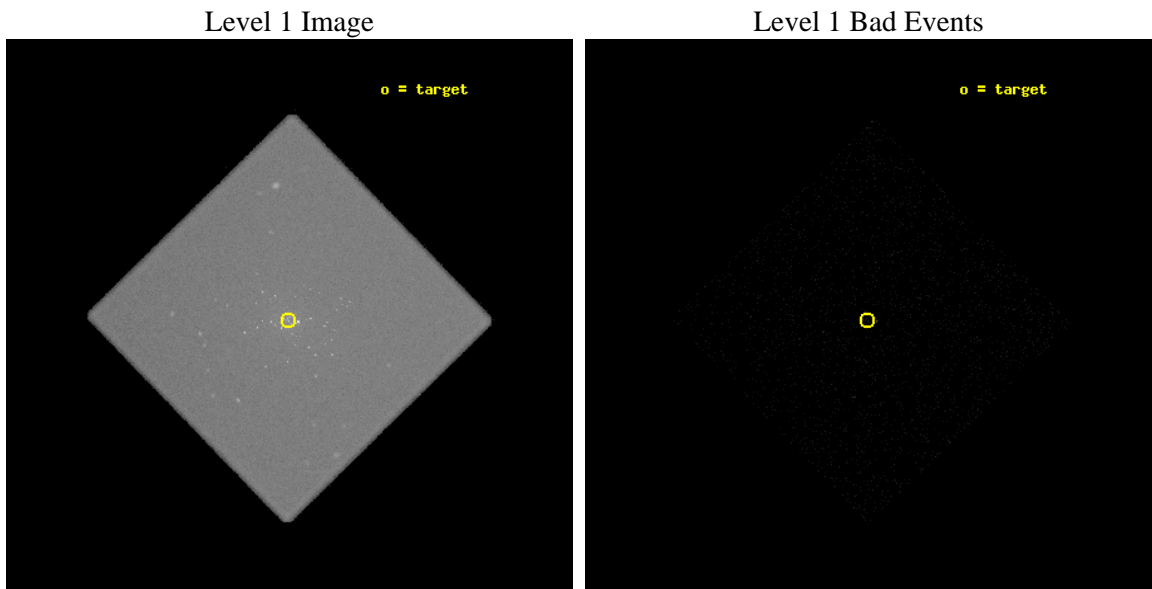
seq_num	300199	Sequence number
obs_id	8529	Observation id
title	Resolving short supersoft source states of optical novae in the core of M31	Proposal title
observer	Dr. Wolfgang Pietsch	Principal investigator
object	M31	Source name
ra_targ	10.684583	Observer's specified target RA [deg]
dec_targ	41.269278	Observer's specified target Dec [deg]
ra_nom	10.682623158325	Nominal RA [deg]
dec_nom	41.265364199194	Nominal Dec [deg]
roll_nom	270.77060176333	Nominal Roll [deg]
revision	3	Processing version of data
ontime	19127.782174587	[s]
livetime	18922.958013779	Ontime multiplied by DTCOR
l2events	1213017	Number of level 2 events



2 OBI

2.1 OBI

2.1.1 Images



2.1.2 Parameters

obi_num	0	Obi number	sched_exp_time	18946.036000	[s] Scheduled observation exposure time
ascdsver	8.4.5	Processing system revision	ontime	19127.782174587	[s]
caldbver	4.5.1.1	 	l1events	1879784	Number of level 1 events
date	2012-08-12T07:56:32	Date and time of file creation			
revision	3	Processing version of data			

2.1.3 Events

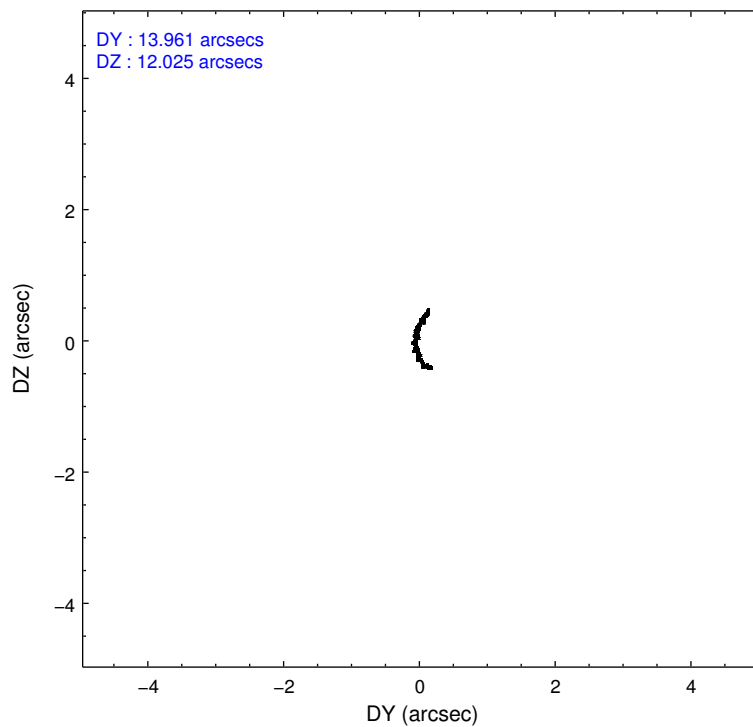
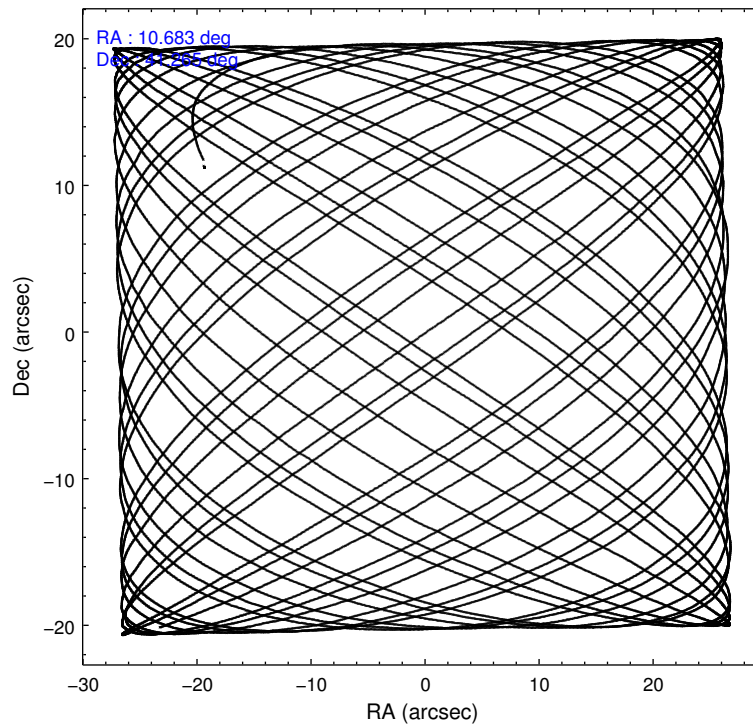
Level 1 Events

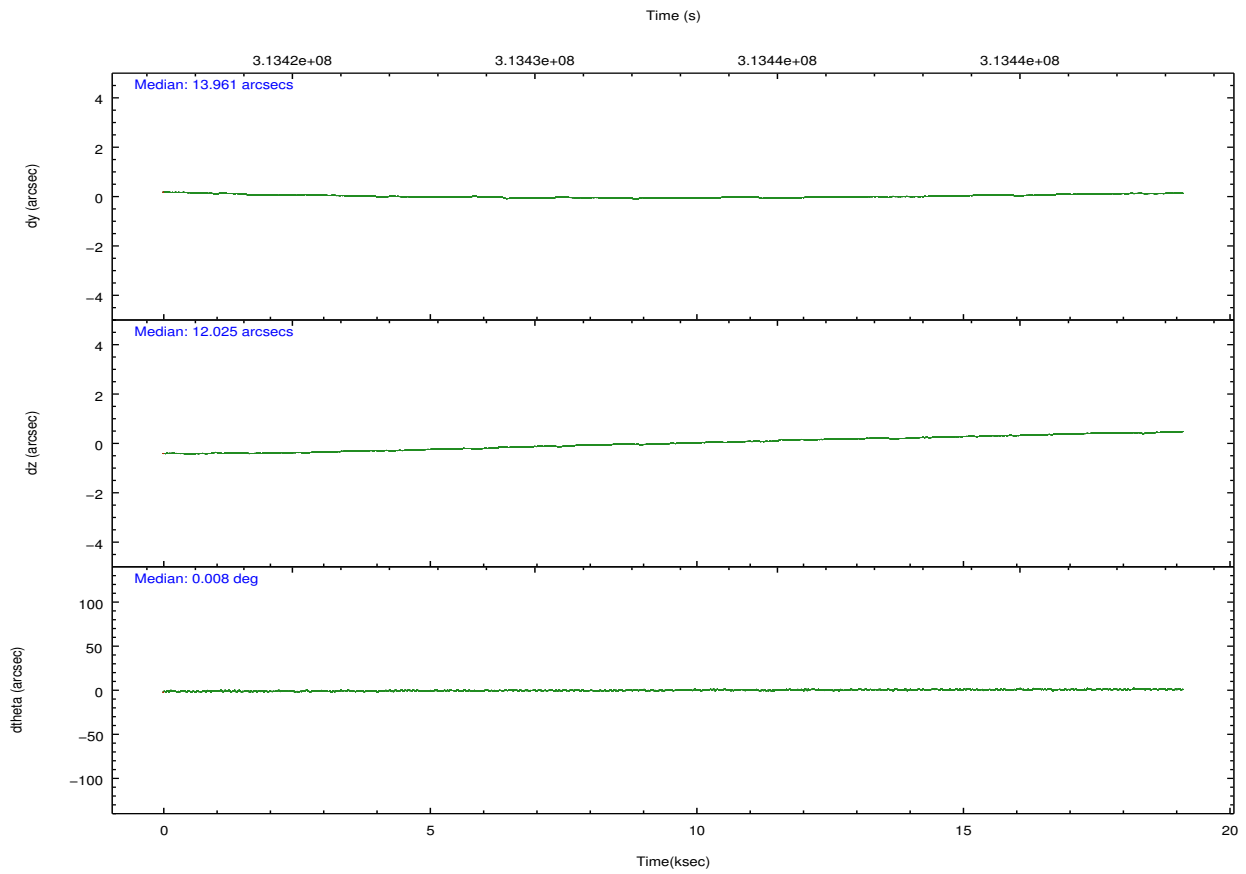
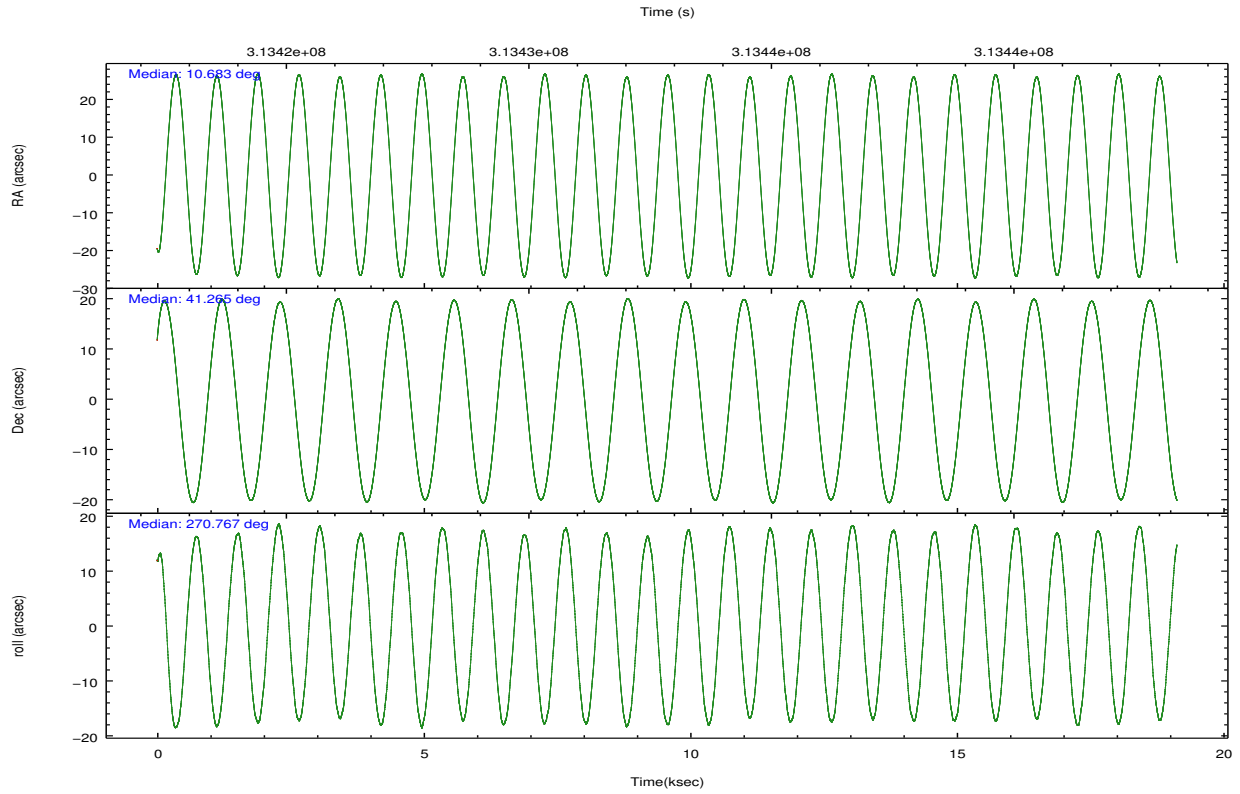
	segment 0
level 1 events	1879784
rejected events	104506
rejected %	5%

2.2 Compared Parameters

Parameter	Planned	Actual	Parameter	Planned	Actual
Instrument	HRC	HRC	Obspar format version number	7	7
Detector	HRC-I	HRC-I	Obspar file type	PREDICTED	ACTUAL
Grating	NONE	NONE	Obspar update status	NONE	UPDATED
Data mode	OBSERVING	OBSERVING			
Observation mode	POINTING	POINTING			
[deg] Pointing RA	10.663354	10.68262315832513			
[deg] Pointing Dec	41.288369	41.26536419919355			
[deg] Pointing Roll	270.878806	270.7706017633291			
[s] Window start time (MET)	313372865.184000	313372865.184000			
[s] Window stop time (MET)	313632005.184000	313632005.184000			
[mm] SIM focus pos	-1.040293	-1.038866356238299			
[mm] SIM defocus	0	0.001426264420575141			
[mm] SIM translation stage pos	126.985494	126.9829799899862			
[mm] SIM translation stage offset	0	0.002508901615314585			
[s] Observation start time (MET)	313423468.184000	313422322.9633			
Observation start date	2007-12-07T14:03:23	2007-12-07T13:45:22			
[s] Observation end time (MET)	313442414.184000	313442608.73928			
Observation end date	2007-12-07T19:19:09	2007-12-07T19:23:28			

2.3 Aspect



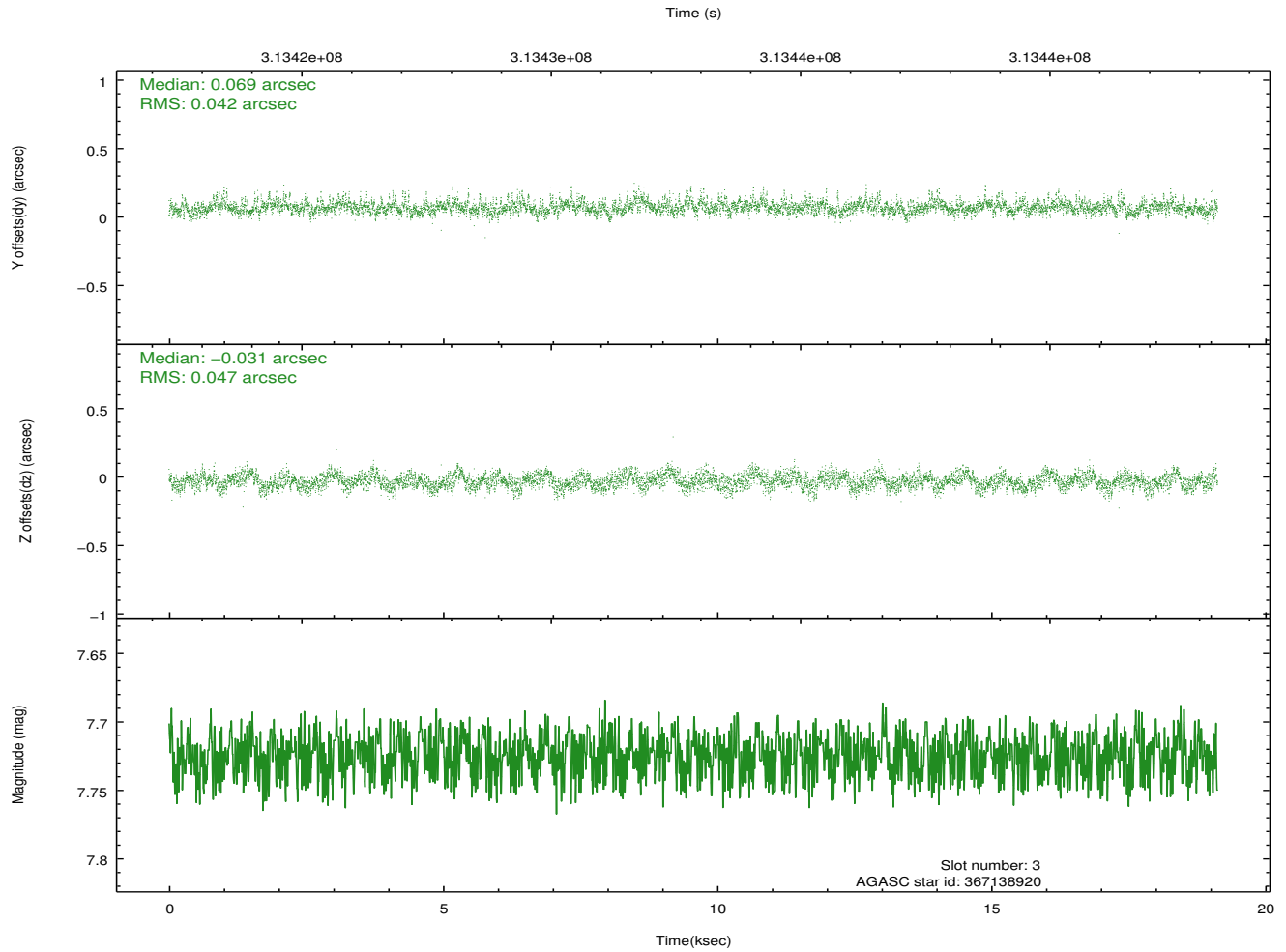
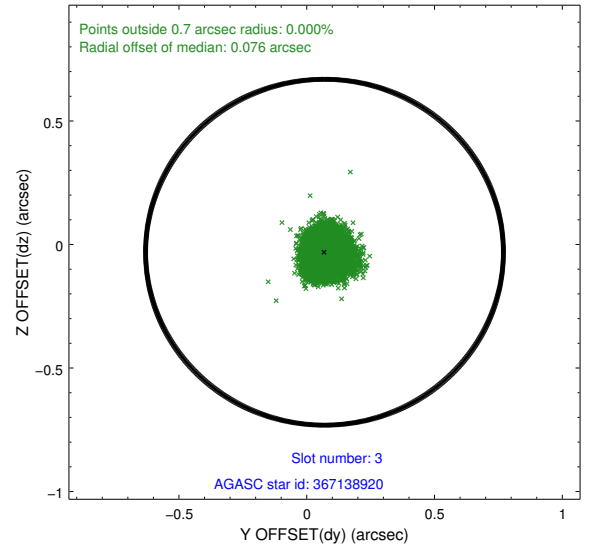
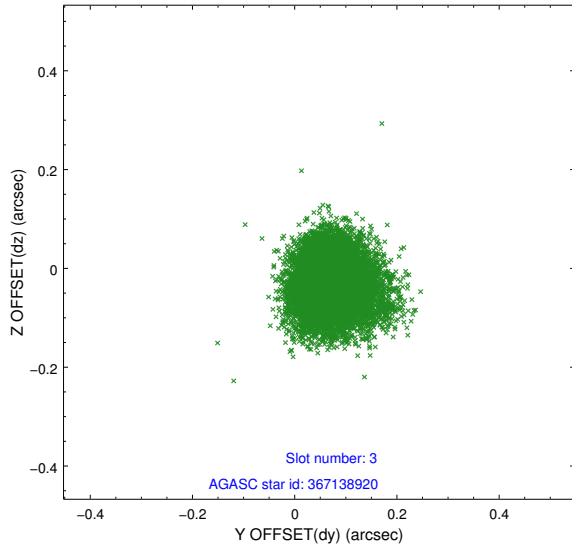


Slot Statistics

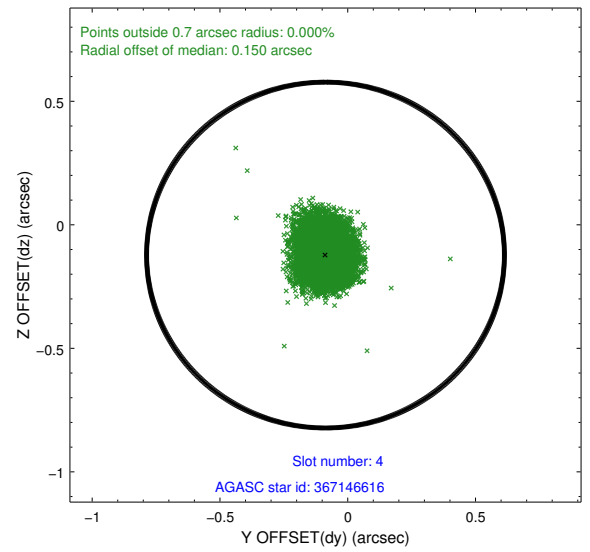
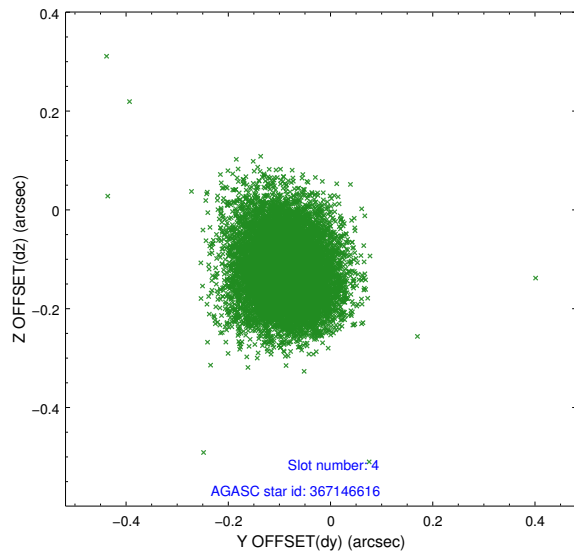
slot	status	id	mag	n_pts	med_dy	med_dz	dr1	dr2	ra	dec	mean_y	mean_z
0	FID	HRC-I-1	6.96	4666	-0.056	0.023	0.010	0.017	0.000000	0.000000	-769.81	-1300.00
1	FID	HRC-I-2	6.99	4666	0.216	-0.135	0.014	0.024	0.000000	0.000000	842.93	-1302.00
2	FID	HRC-I-3	7.05	4666	-0.042	0.019	0.012	0.021	0.000000	0.000000	-1198.11	1004.28
3	GUIDE	367138920	7.72	9331	0.069	-0.031	0.066	0.110	11.513485	40.808909	1750.83	2290.58
4	GUIDE	367146616	8.85	9307	-0.087	-0.122	0.090	0.145	11.418645	41.190163	376.23	2040.62
5	GUIDE	367657896	9.02	9326	0.043	0.079	0.084	0.136	11.197765	41.313576	-72.74	1446.49
6	GUIDE	367148872	7.23	9330	-0.005	0.064	0.071	0.115	10.505940	40.688258	2153.98	-462.68
7	GUIDE	367674552	8.84	9323	-0.027	0.010	0.074	0.120	11.016238	41.570845	-1003.65	965.80

2.4 Star Slots

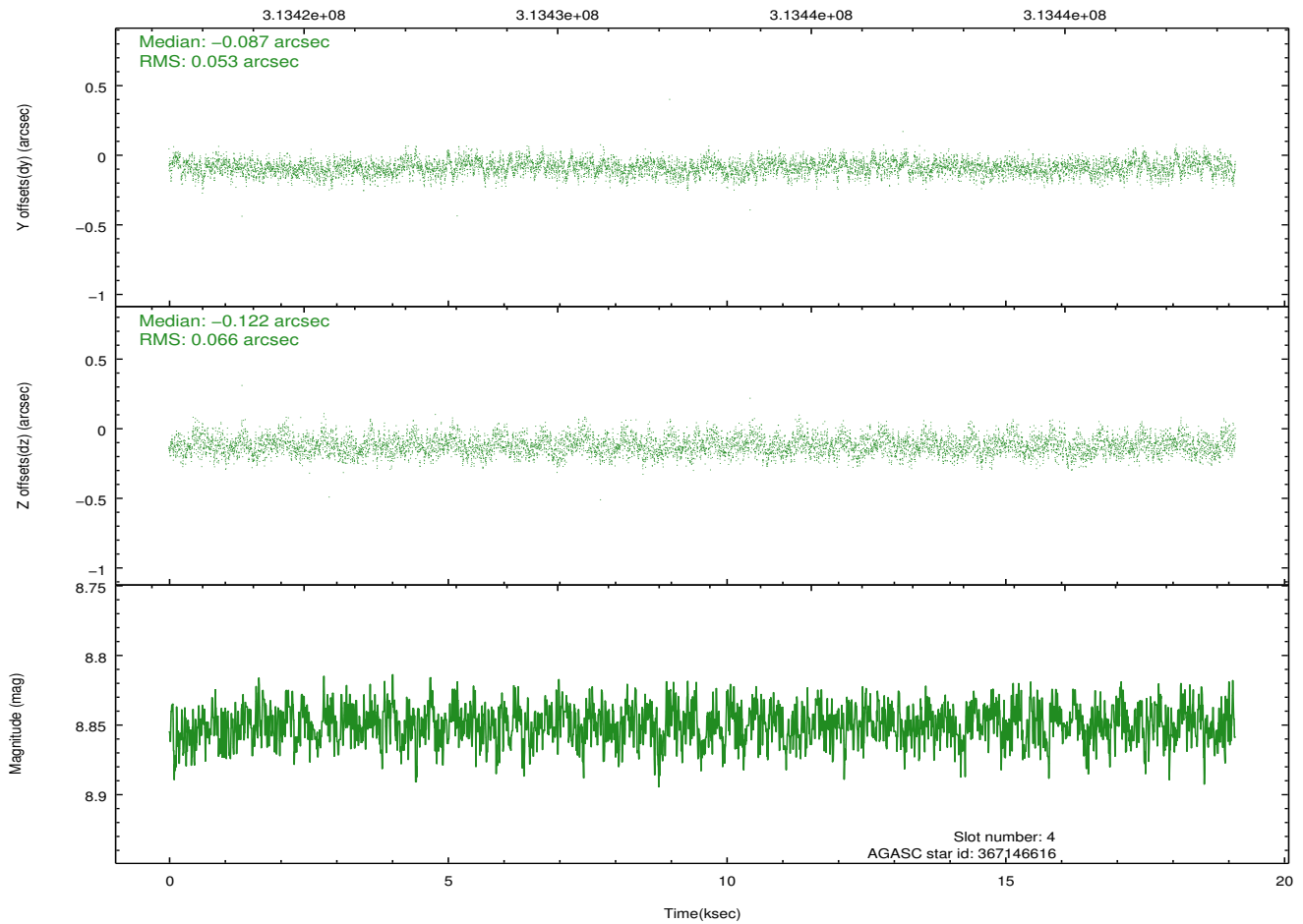
2.4.1 Slot 3



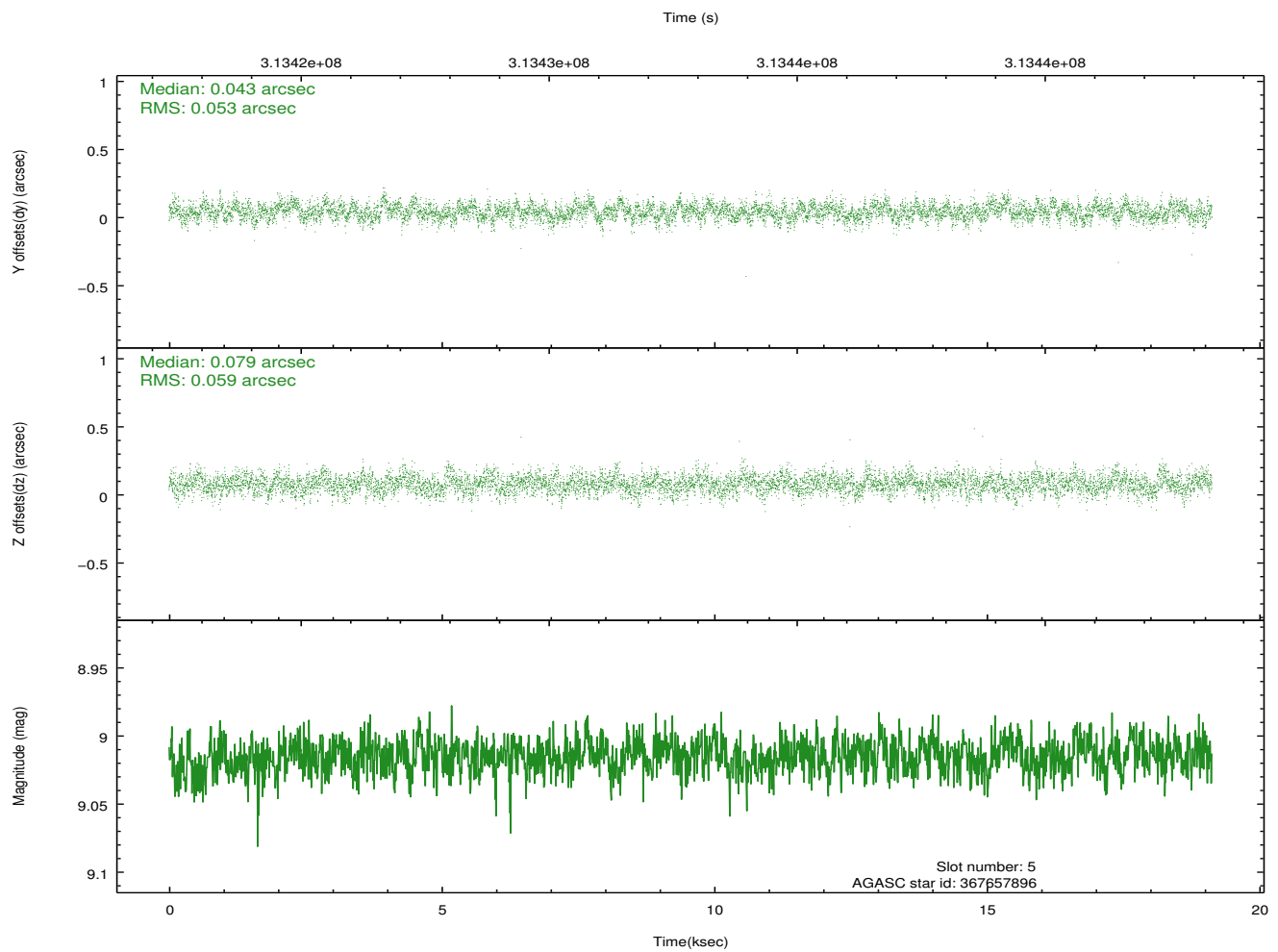
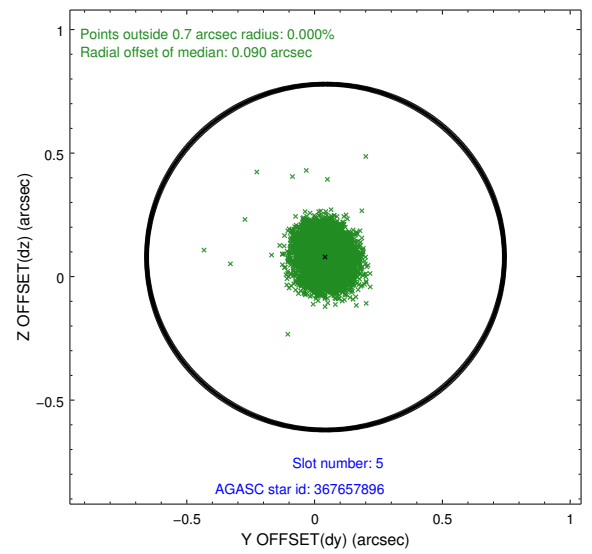
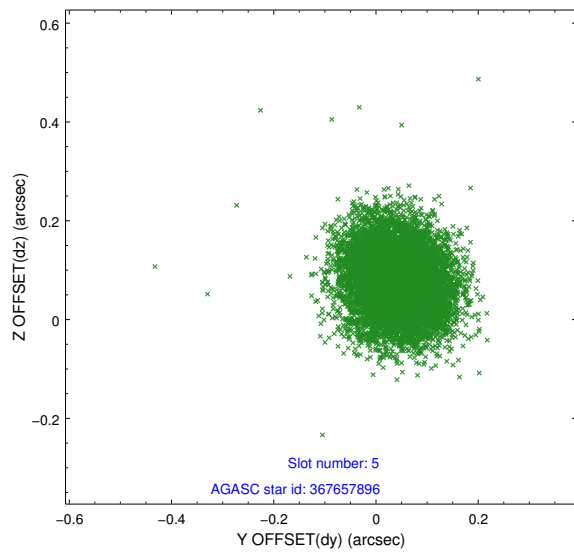
2.4.2 Slot 4



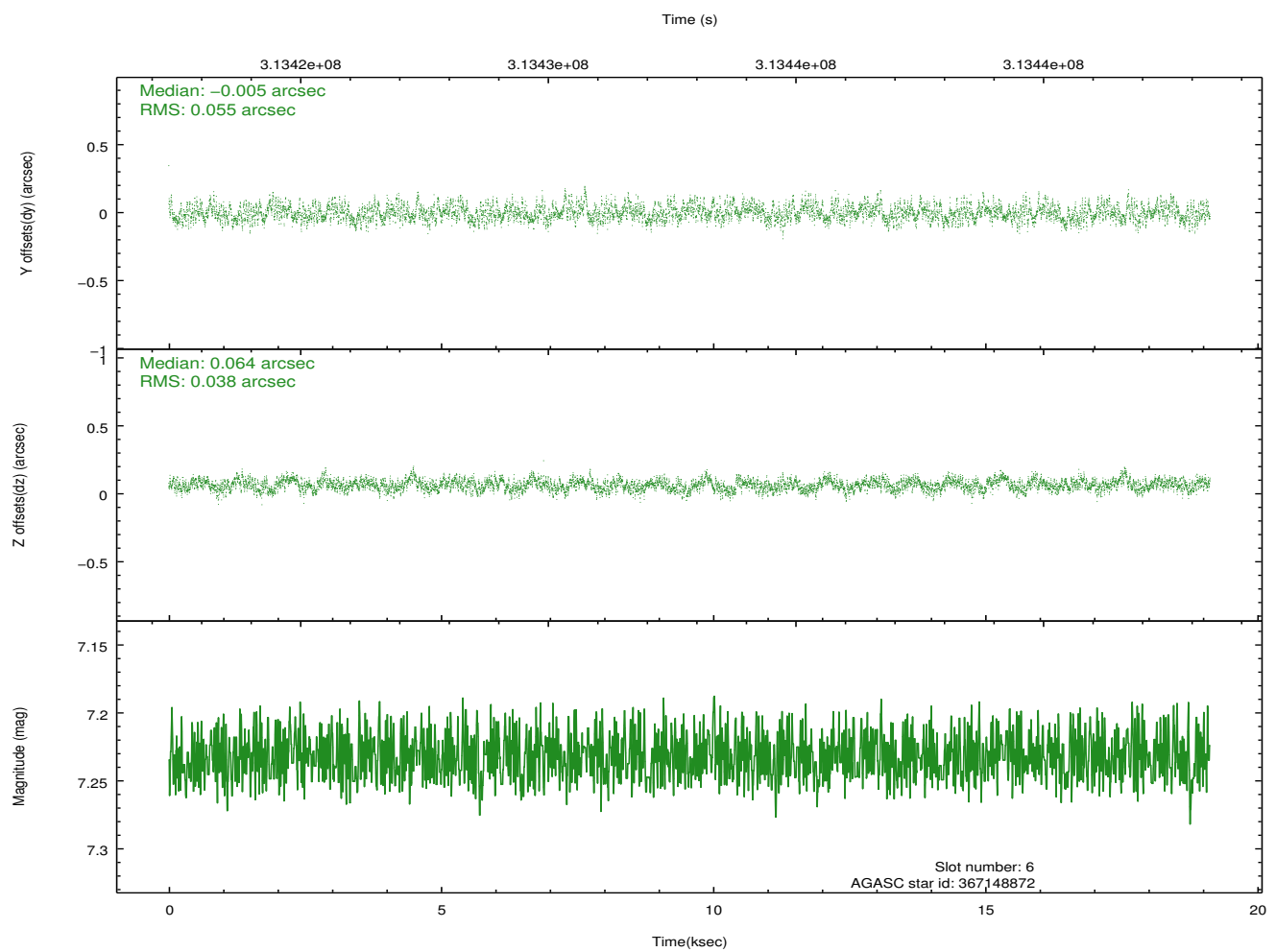
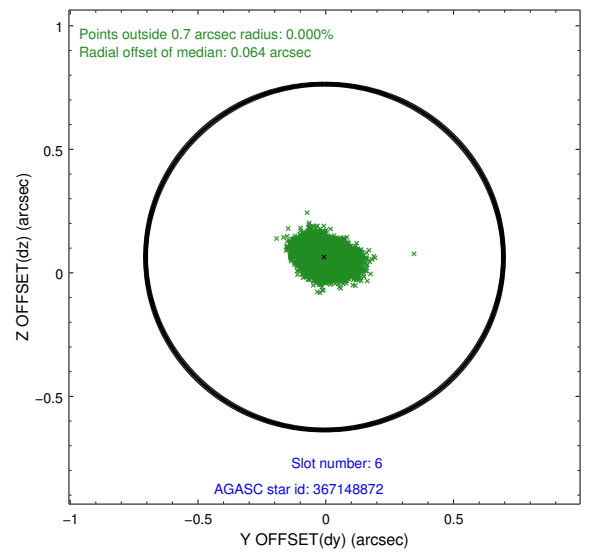
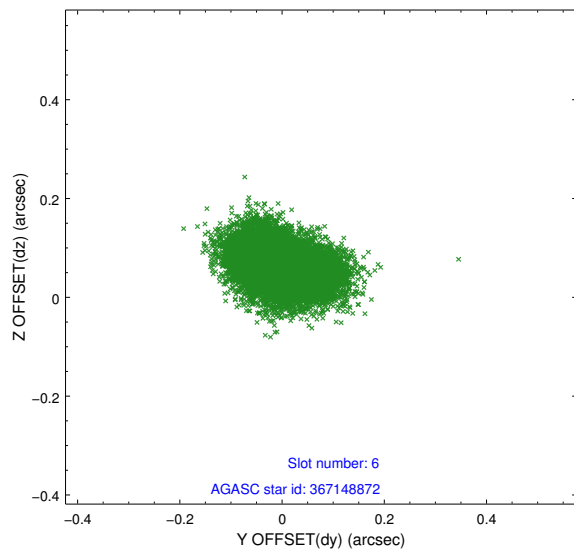
Time (s)



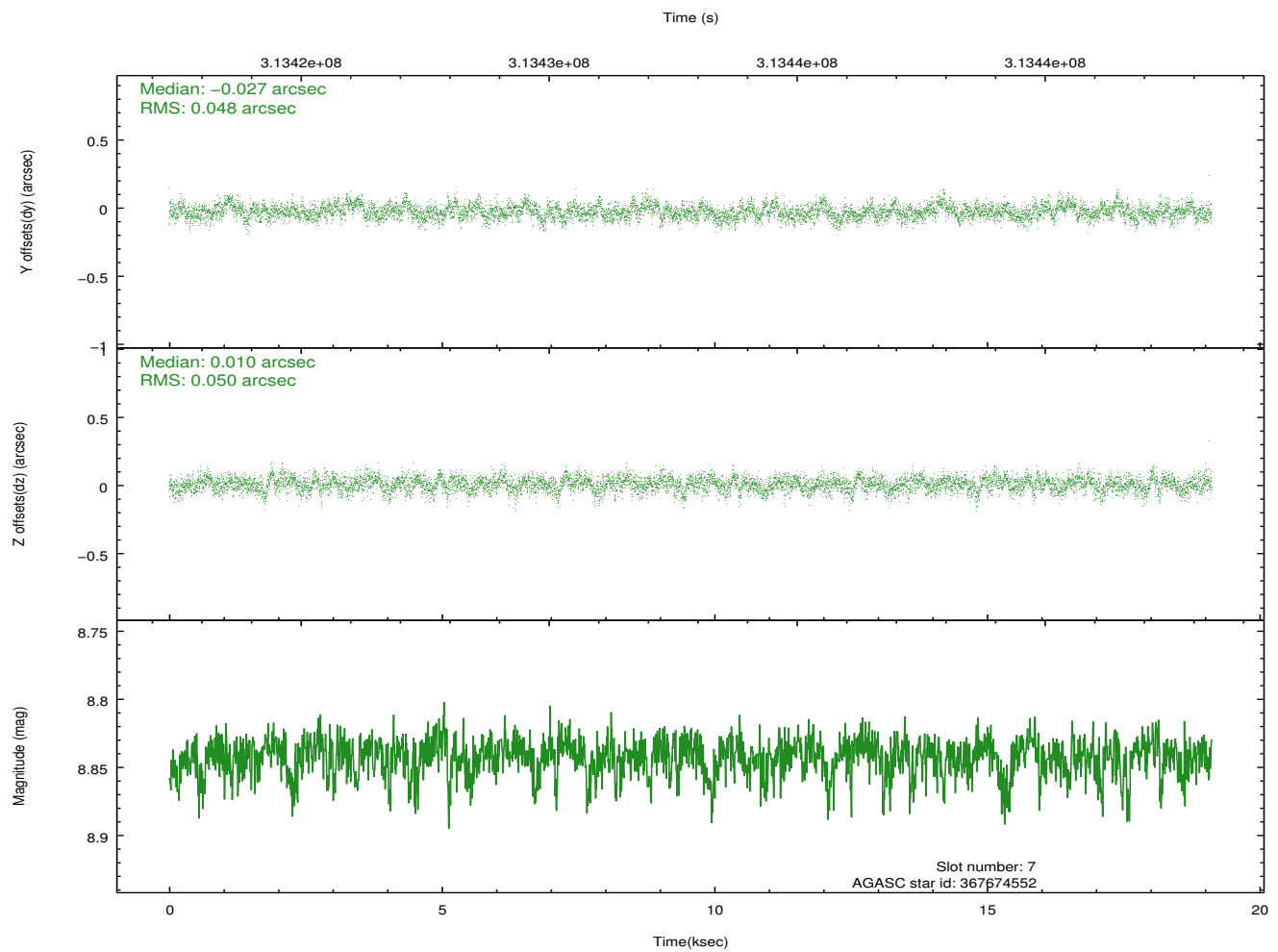
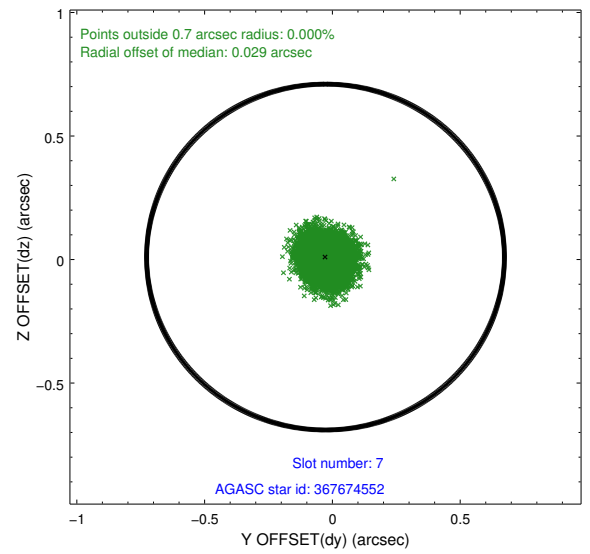
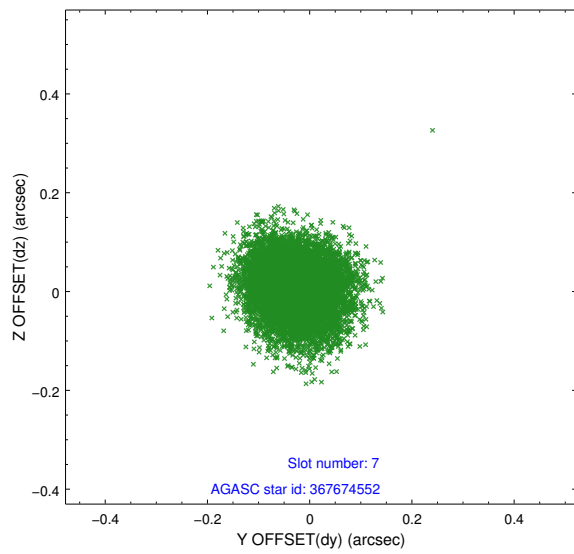
2.4.3 Slot 5



2.4.4 Slot 6

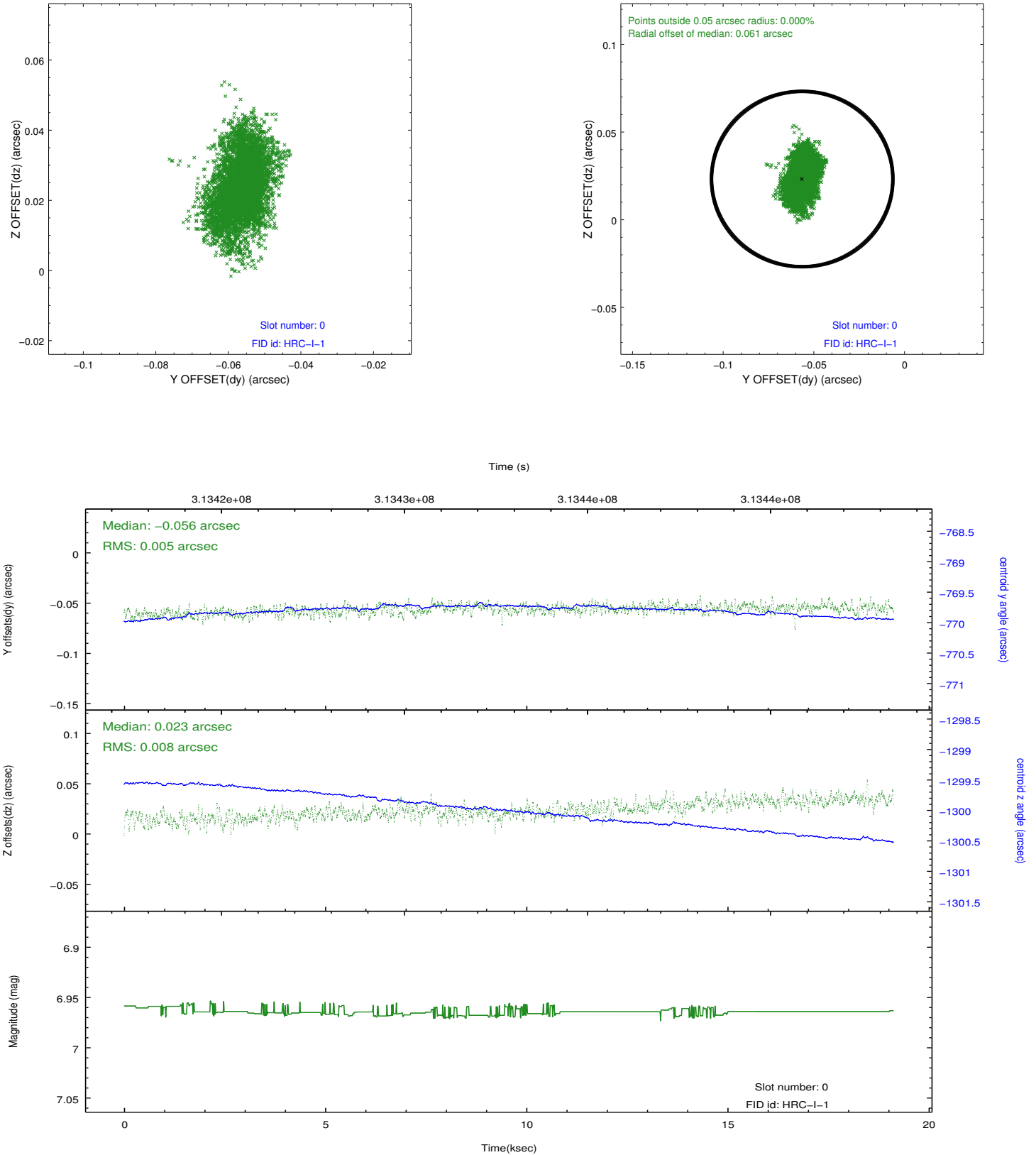


2.4.5 Slot 7

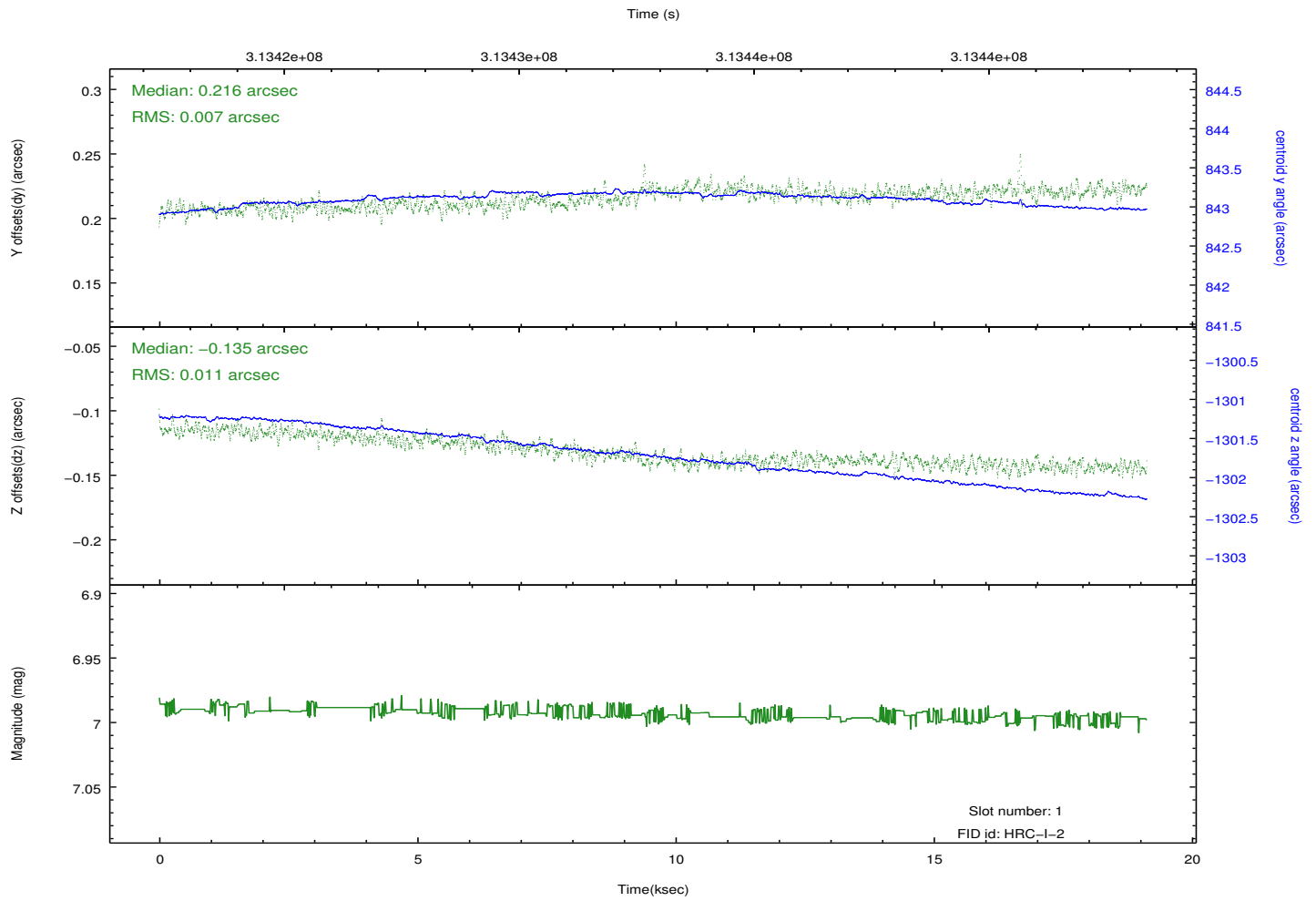
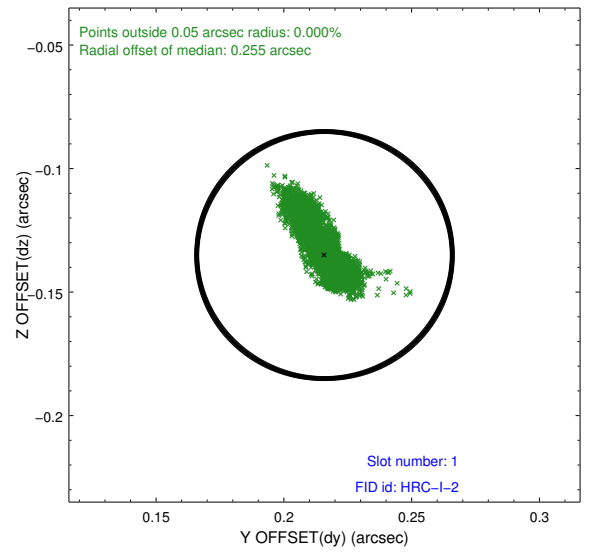
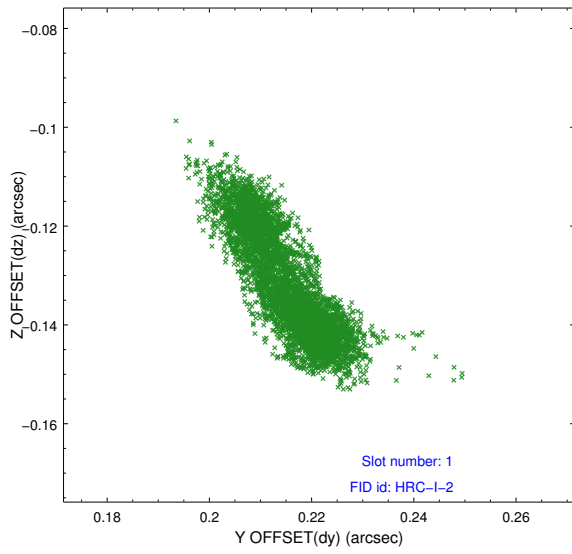


2.5 FID Slots

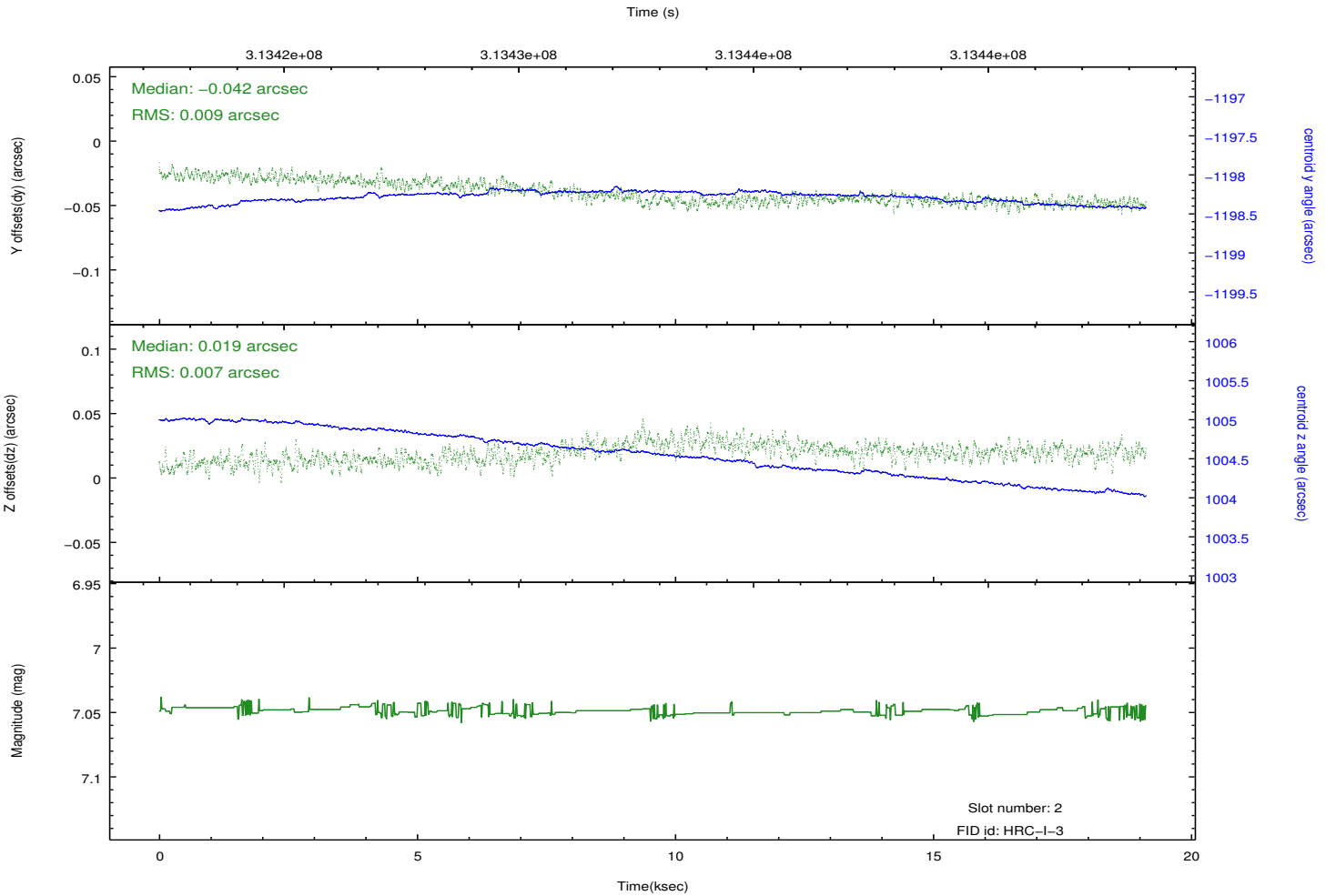
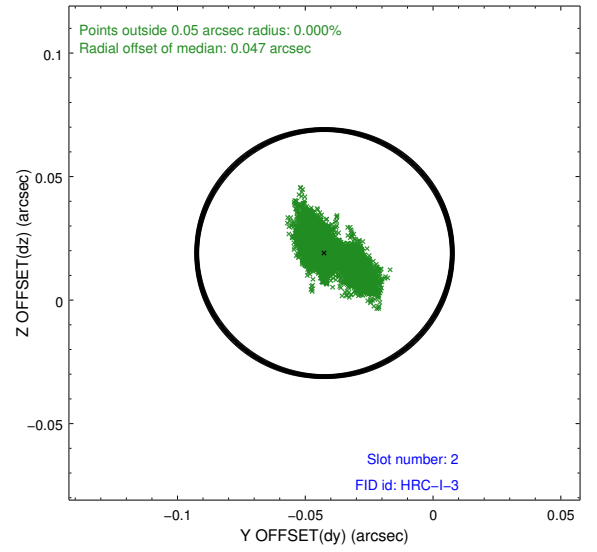
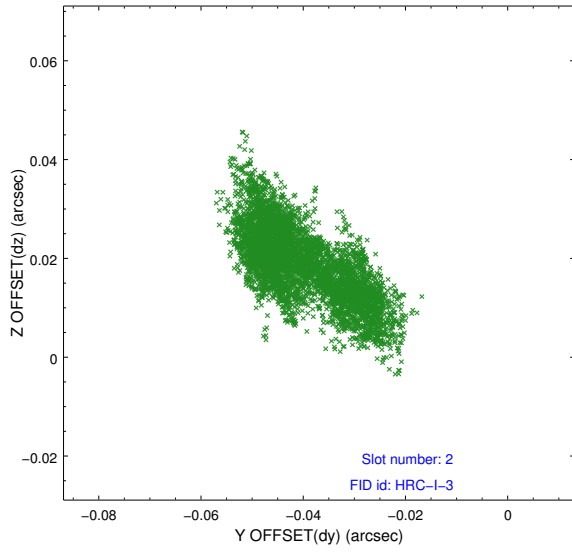
2.5.1 Slot 0



2.5.2 Slot 1



2.5.3 Slot 2



A Summary

A.1 Status

V&V Scientist	Beth Sundheim
V&V Date (YYYY-MM-DD)	2012.08.16
V&V Edition	1
V&V Disposition and Status	OK
V&V Charge Time	19.1277821

A.2 Comments

Joint proposal with XMM.

Window preference met.