

V&V Reference Report

L2 ASCDS Version : 8.4.4

Observation 8919 - L2 Version 2
Chandra X-Ray Center

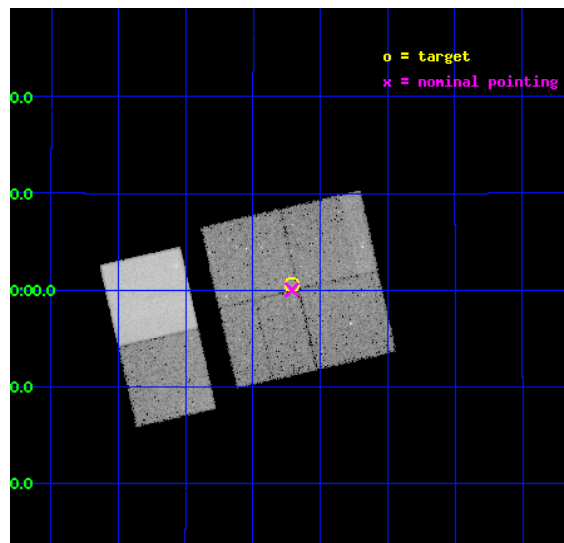
L2 Processing Date : May 10 2012

Contents

1	Front	2
2	OBI	3
2.1	OBI	3
2.1.1	Images	3
2.1.2	Bias	3
2.1.3	Parameters	4
2.1.4	Events	4
2.2	Compared Parameters	5
2.3	Aspect	6
2.4	Star Slots	9
2.4.1	Slot 3	9
2.4.2	Slot 4	10
2.4.3	Slot 5	11
2.4.4	Slot 6	12
2.4.5	Slot 7	13
2.5	FID Slots	14
2.5.1	Slot 0	14
2.5.2	Slot 1	15
2.5.3	Slot 2	16
A	Summary	17
A.1	Status	17
A.2	Comments	17

1 Front

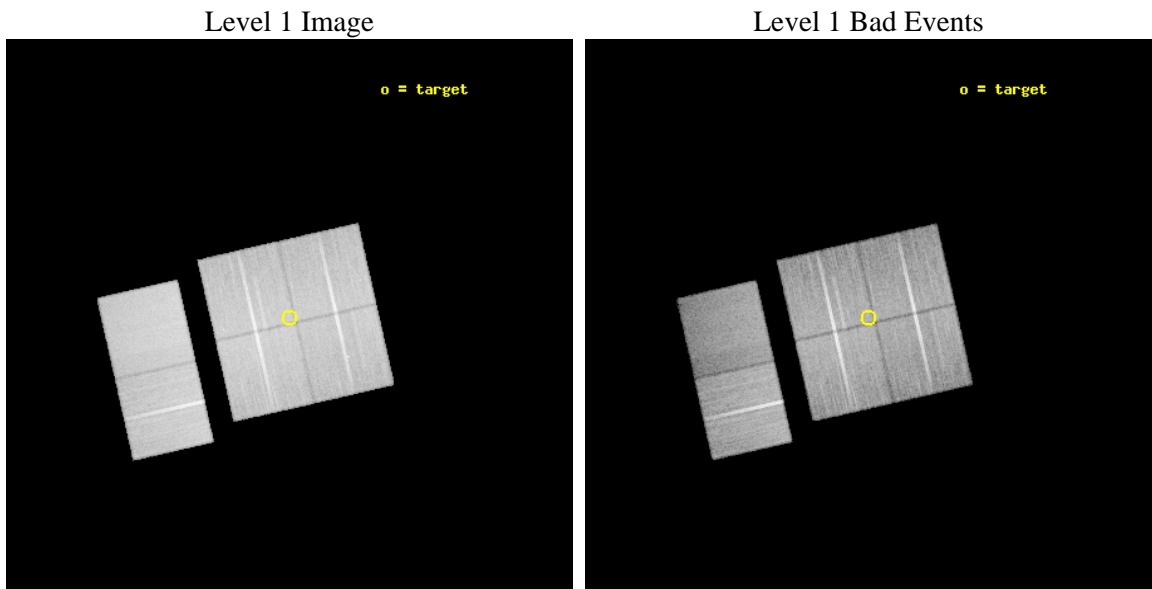
seq_num	200500	Sequence number
obs_id	8919	Observation id
title	The Full Picture of Magnetic Activity in Ultracool Dwarfs: Simultaneous Observations of Coronae and Chromospheres	Proposal title
observer	Prof. Edo Berger	Principal investigator
object	2MASS J0746425+200032	Source name
dtcycle	0	
cycle	P	events from which exps? Prim/Second/Both
ra_targ	116.677083	Observer's specified target RA [deg]
dec_targ	20.008889	Observer's specified target Dec [deg]
ra_nom	116.67776566906	Nominal RA [deg]
dec_nom	20.000825075579	Nominal Dec [deg]
roll_nom	257.20845128015	Nominal Roll [deg]
revision	2	Processing version of data
ontime	29836.758918583	Sum of GTIs [s]
livetime	29458.947911617	Livetime [s]
ontime0	29839.999888897	Sum of GTIs [s]
ontime1	29833.517908275	Sum of GTIs [s]
ontime2	29839.999888897	Sum of GTIs [s]
ontime3	29836.758918583	Sum of GTIs [s]
ontime6	29839.999888897	Sum of GTIs [s]
ontime7	29839.999888897	Sum of GTIs [s]
l2events	223013	Number of level 2 events



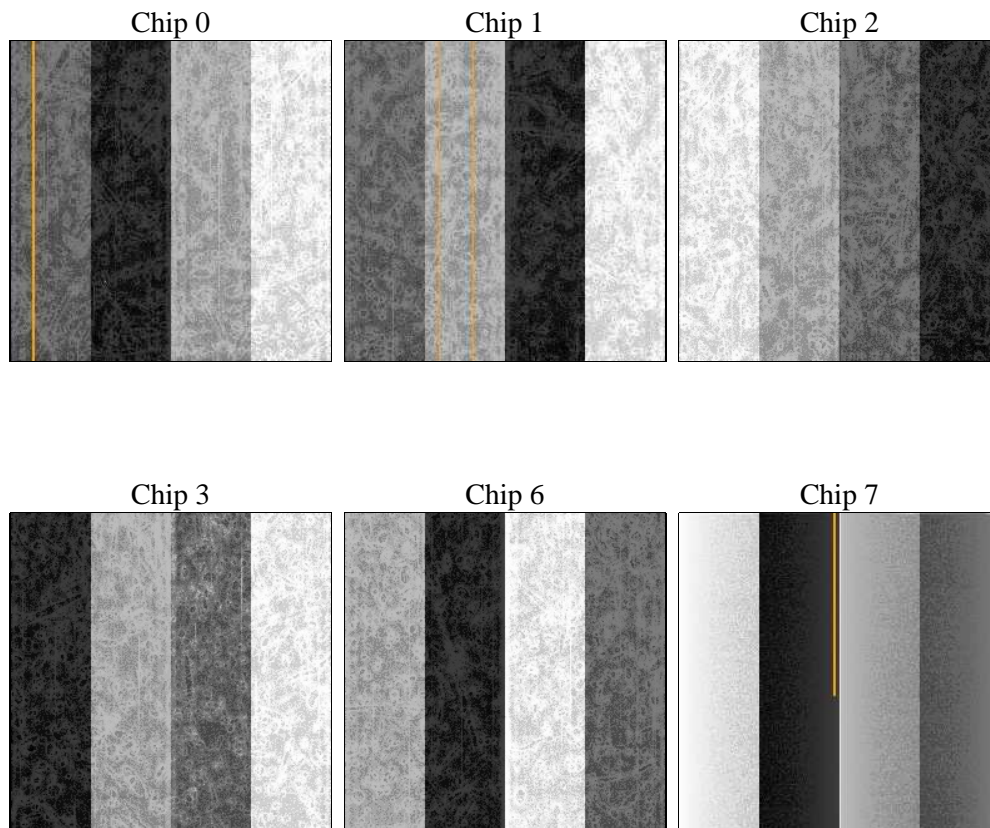
2 OBI

2.1 OBI

2.1.1 Images



2.1.2 Bias



2.1.3 Parameters

obi_num	1	Obi number	sched_exp_time	29700.000000	[s] Scheduled observation exposure time
ascdsver	8.4.4	Processing system revision	ontime	29836.758918583	Sum of GTIs [s]
caldbver	4.4.9	 	ontime0	29839.999888897	Sum of GTIs [s]
date	2012-05-10T09:18:21	Date and time of file creation	ontime1	29833.517908275	Sum of GTIs [s]
revision	2	Processing version of data	ontime2	29839.999888897	Sum of GTIs [s]
			ontime3	29836.758918583	Sum of GTIs [s]
			ontime6	29839.999888897	Sum of GTIs [s]
			ontime7	29839.999888897	Sum of GTIs [s]
			l1events	1467852	Number of level 1 events

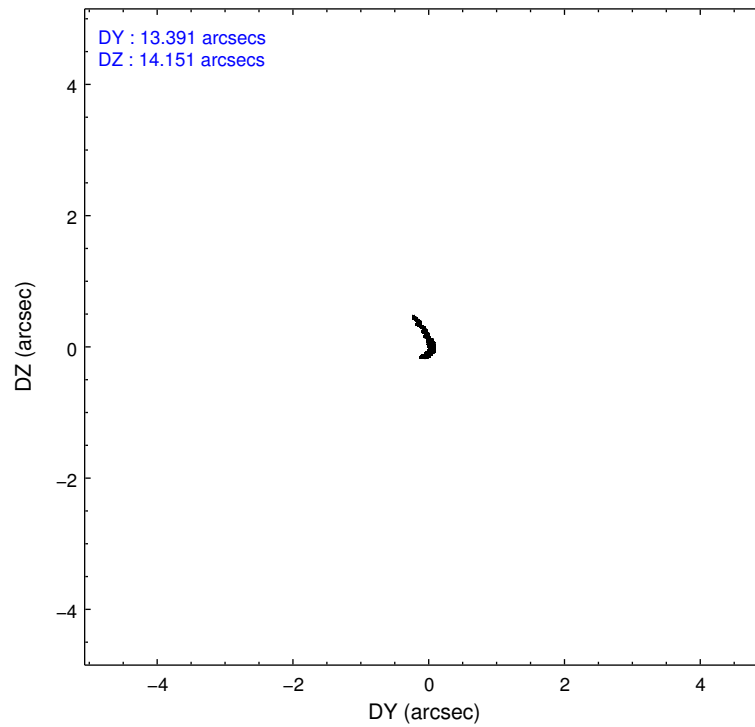
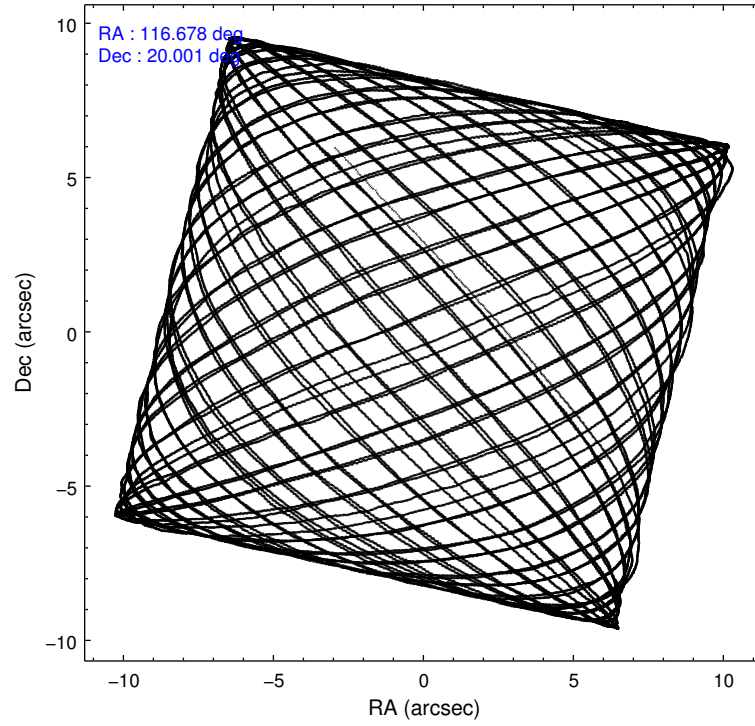
2.1.4 Events

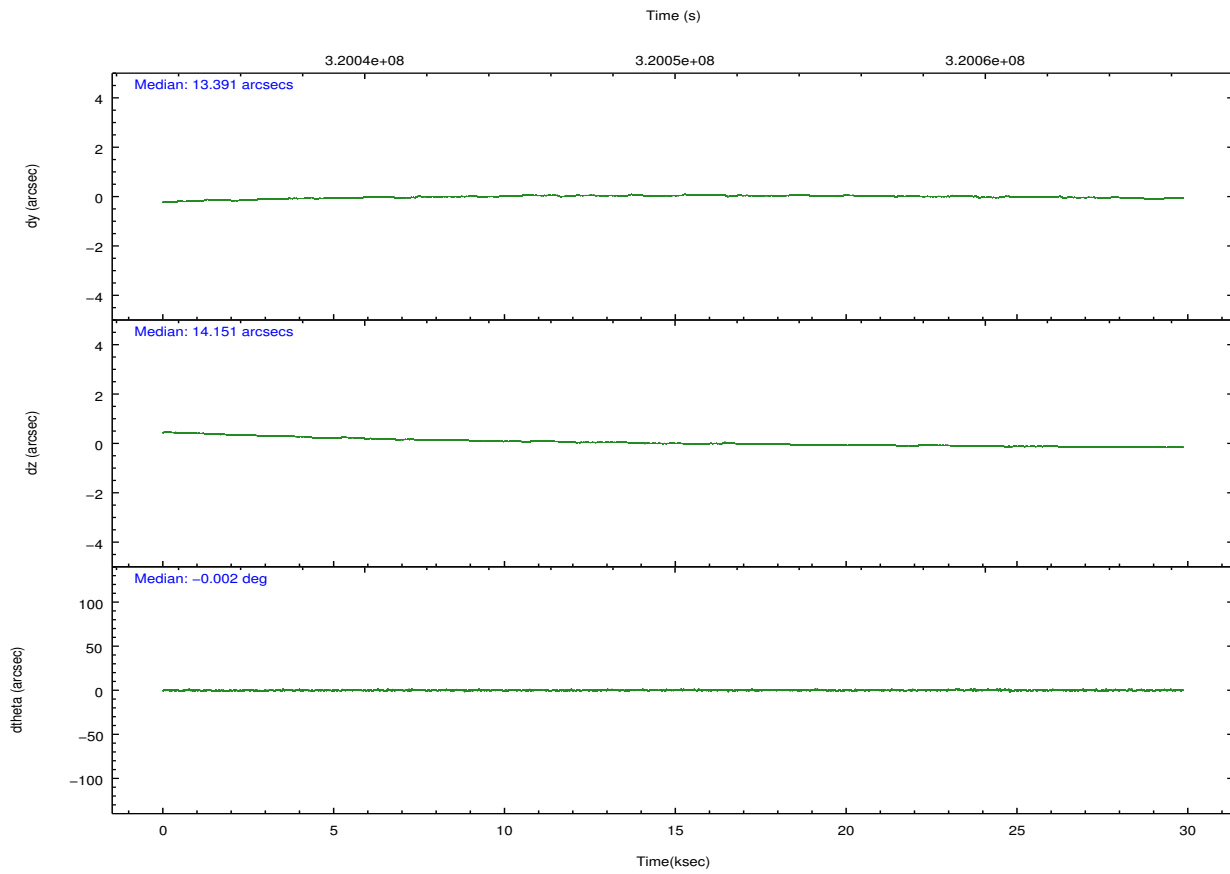
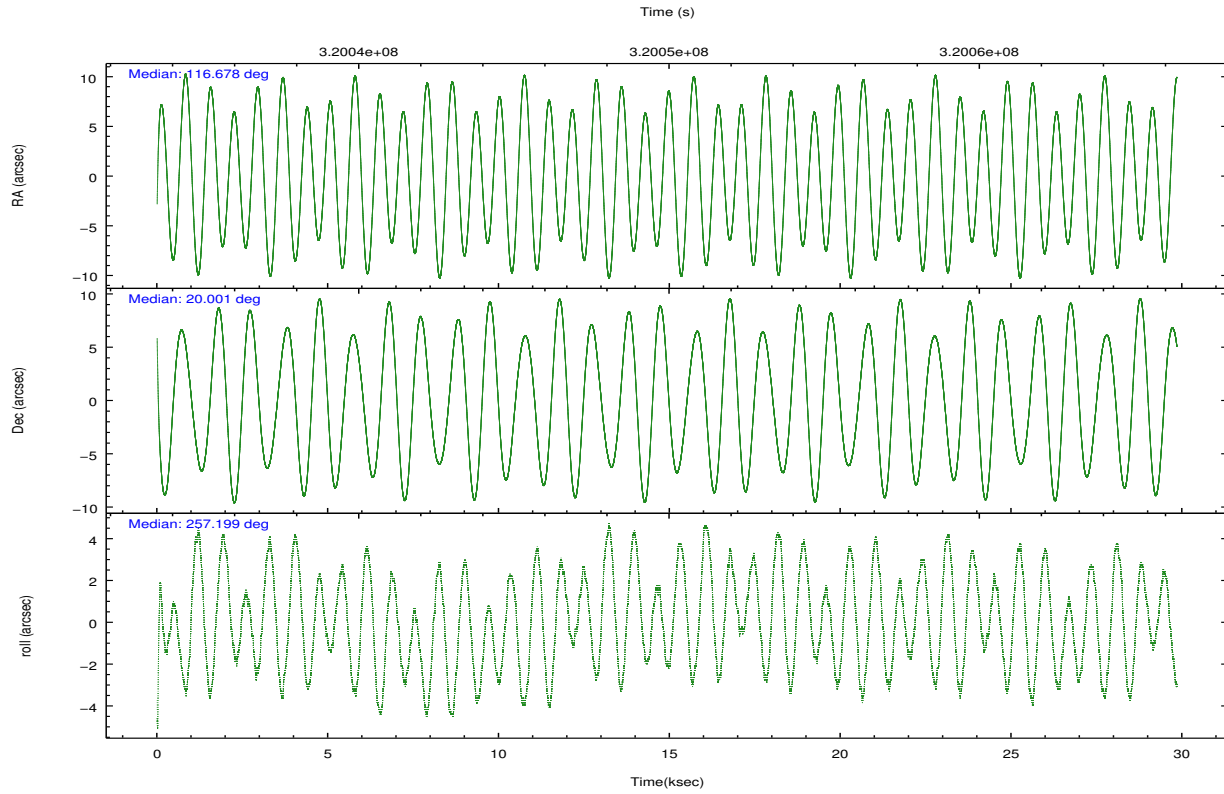
	ccd 0	ccd 1	ccd 2	ccd 3	ccd 6	ccd 7		ccd 0	ccd 1	ccd 2	ccd 3	ccd 6	ccd 7
level 1 events	223412	226806	251644	239552	254217	272221	grade 0 events	8629	10242	8507	8594	8969	11532
rejected events	199264	199595	228262	216122	228826	148841		3%	4%	3%	3%	3%	4%
rejected %	89%	88%	90%	90%	90%	54%	grade 1 events	119	131	136	132	119	318
								0%	0%	0%	0%	0%	0%
							grade 2 events	5777	6091	5653	5141	5702	25199
								2%	2%	2%	2%	2%	9%
							grade 3 events	2756	2857	2467	2586	2632	11300
								1%	1%	0%	1%	1%	4%
							grade 4 events	2532	2914	2558	2636	2742	11156
								1%	1%	1%	1%	1%	4%
							grade 5 events	8397	9374	7768	9683	10138	28534
								3%	4%	3%	4%	3%	10%
							grade 6 events	4631	5326	4350	4645	5511	65052
								2%	2%	1%	1%	2%	23%
							grade 7 events	190571	189871	220205	206135	218404	119130
								85%	83%	87%	86%	85%	43%

2.2 Compared Parameters

Parameter	Planned	Actual	Parameter	Planned	Actual
Instrument	ACIS	ACIS	Obspar format version number	7	7
Detector	ACIS-012367	ACIS-012367	Obspar file type	PREDICTED	ACTUAL
Grating	NONE	NONE	Obspar update status	NONE	UPDATED
Data mode	VFAINT	VFAINT	CCD I0 on	Y	Y
Observation mode	POINTING	POINTING	CCD I1 on	Y	Y
[deg] Pointing RA	116.668987	116.6777656690633	CCD I2 on	Y	Y
[deg] Pointing Dec	20.027064	20.00082507557879	CCD I3 on	Y	Y
[deg] Pointing Roll	257.002774	257.2084512801501	CCD S0 on	N	N
[s] Window start time (MET)	312854465.184000	312854465.184000	CCD S1 on	N	N
[s] Window stop time (MET)	321926465.184000	321926465.184000	CCD S2 on	O2	Y
[mm] SIM focus pos	-0.782348	-0.7809083437167272	CCD S3 on	O1	Y
[mm] SIM defocus	0	0.001439871863259334	CCD S4 on	N	N
[mm] SIM translation stage pos	-233.592463	-233.5874344608287	CCD S5 on	N	N
[mm] SIM translation stage offset	0	-0.005018542100998502	Number of optional ACIS chips dropped	0	0
[s] Observation start time (MET)	320035165.184000	320034002.24615	On-chip summing requested	N	N
Observation start date	2008-02-22T02:38:20	2008-02-22T02:20:02	Subarray requested	NONE	NONE
[s] Observation end time (MET)	320064865.184000	320065793.1352	Alternating exposures requested	N	N
Observation end date	2008-02-22T10:53:20	2008-02-22T11:09:53	[s] Primary exposure time	0.000000	3.2
Read mode	TIMED	TIMED			

2.3 Aspect



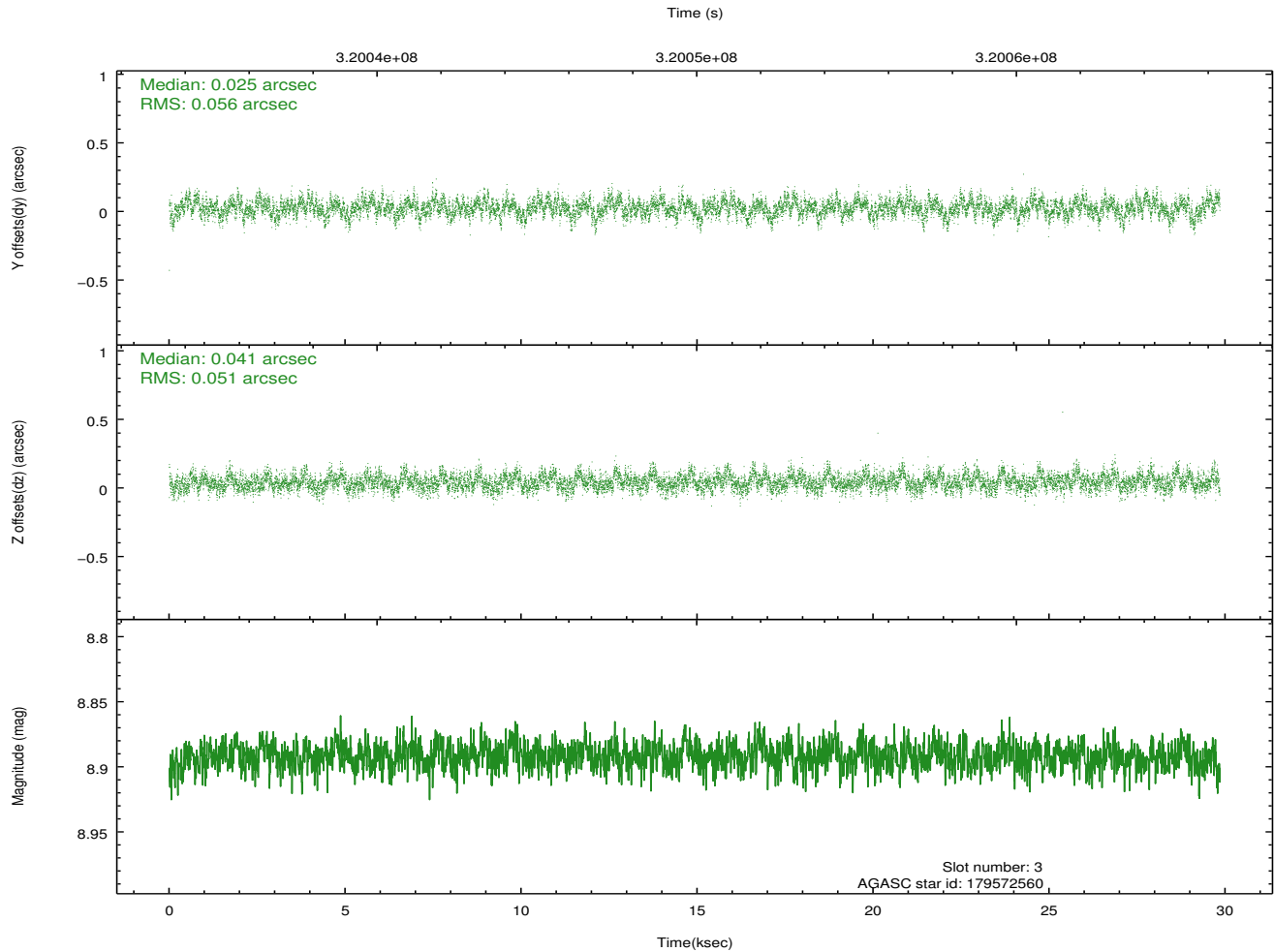
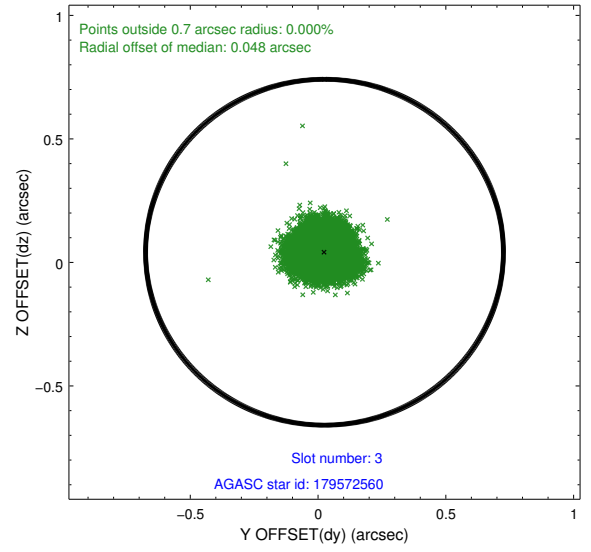
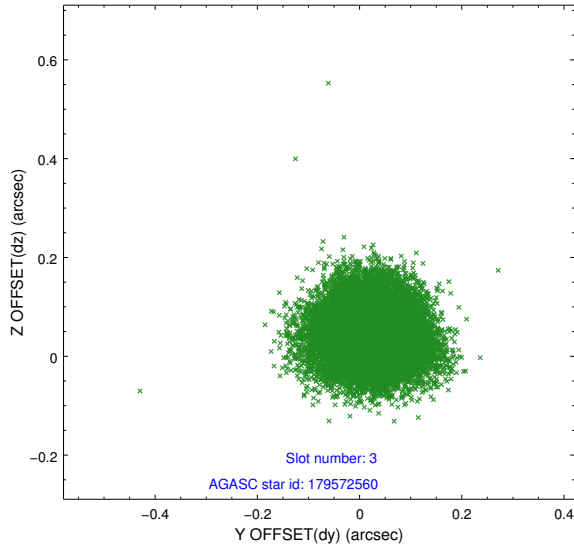


Slot Statistics

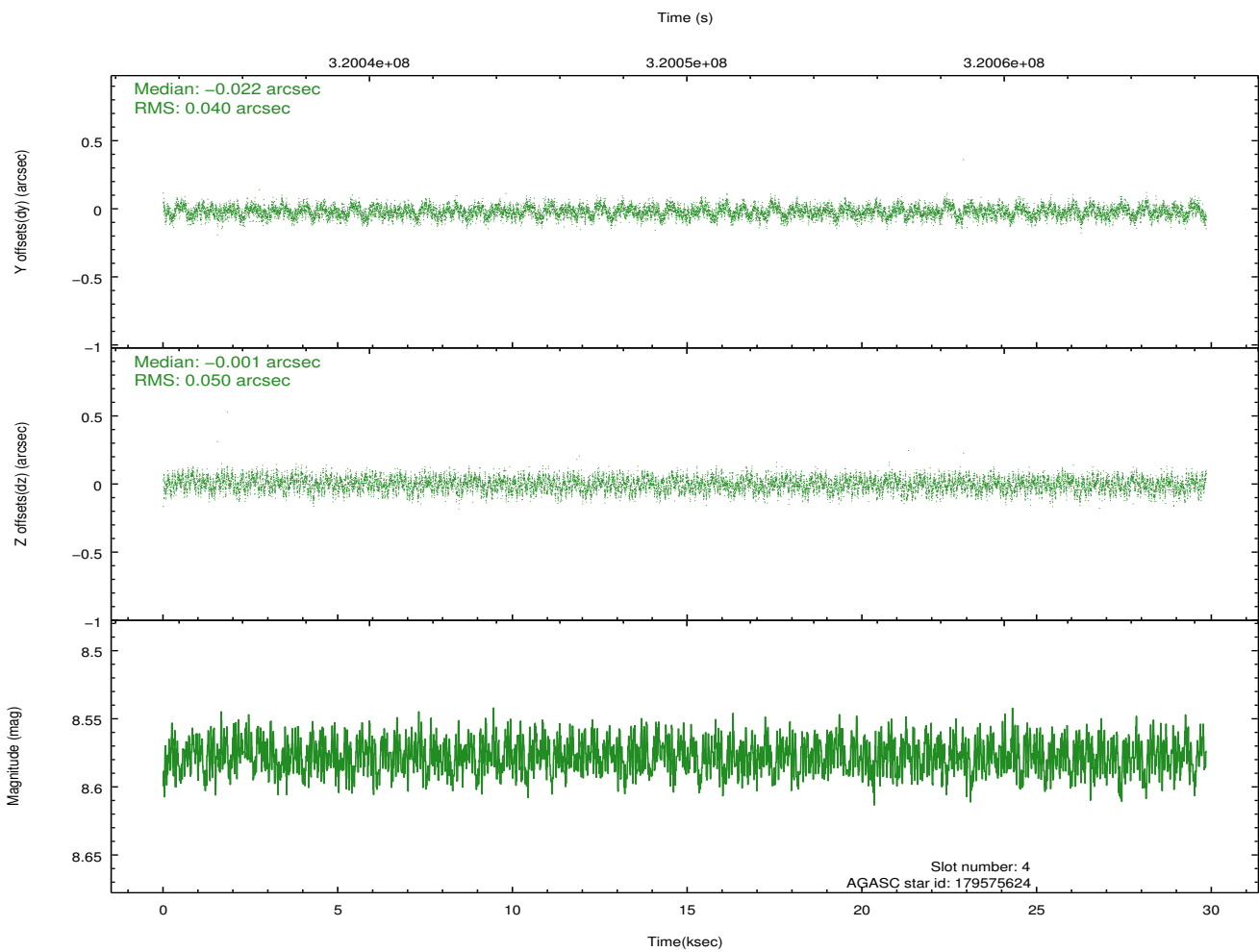
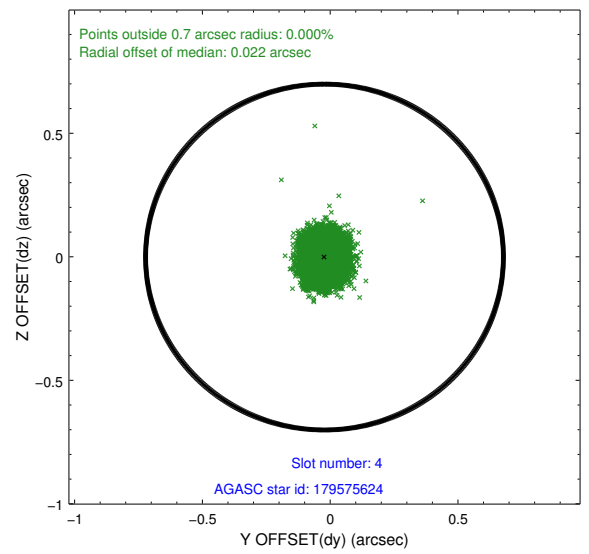
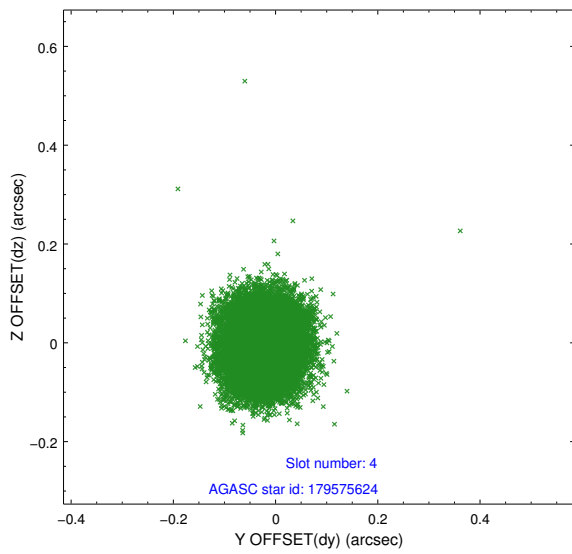
slot	status	id	mag	n_pts	med_dy	med_dz	dr1	dr2	ra	dec	mean_y	mean_z
0	FID	ACIS-I-1	7.23	7280	0.026	0.014	0.007	0.012	0.000000	0.000000	926.16	-837.76
1	FID	ACIS-I-5	7.22	7278	-0.194	0.040	0.008	0.013	0.000000	0.000000	-1822.13	1059.71
2	FID	ACIS-I-6	7.23	7279	0.076	0.016	0.008	0.014	0.000000	0.000000	391.67	1704.28
3	GUIDE	179572560	8.89	14549	0.025	0.041	0.081	0.131	117.310440	20.252348	-1281.66	1927.82
4	GUIDE	179575624	8.58	14553	-0.022	-0.001	0.069	0.108	116.144978	20.357891	-764.97	-1991.45
5	GUIDE	179575944	7.43	14561	0.013	-0.031	0.055	0.087	116.057911	20.201459	-149.79	-2152.80
6	GUIDE	179577576	8.94	14552	0.031	-0.014	0.070	0.113	116.948181	20.526947	-1965.79	512.13
7	GUIDE	179582152	7.64	14555	-0.045	0.003	0.069	0.108	117.306239	19.769456	413.92	2311.81

2.4 Star Slots

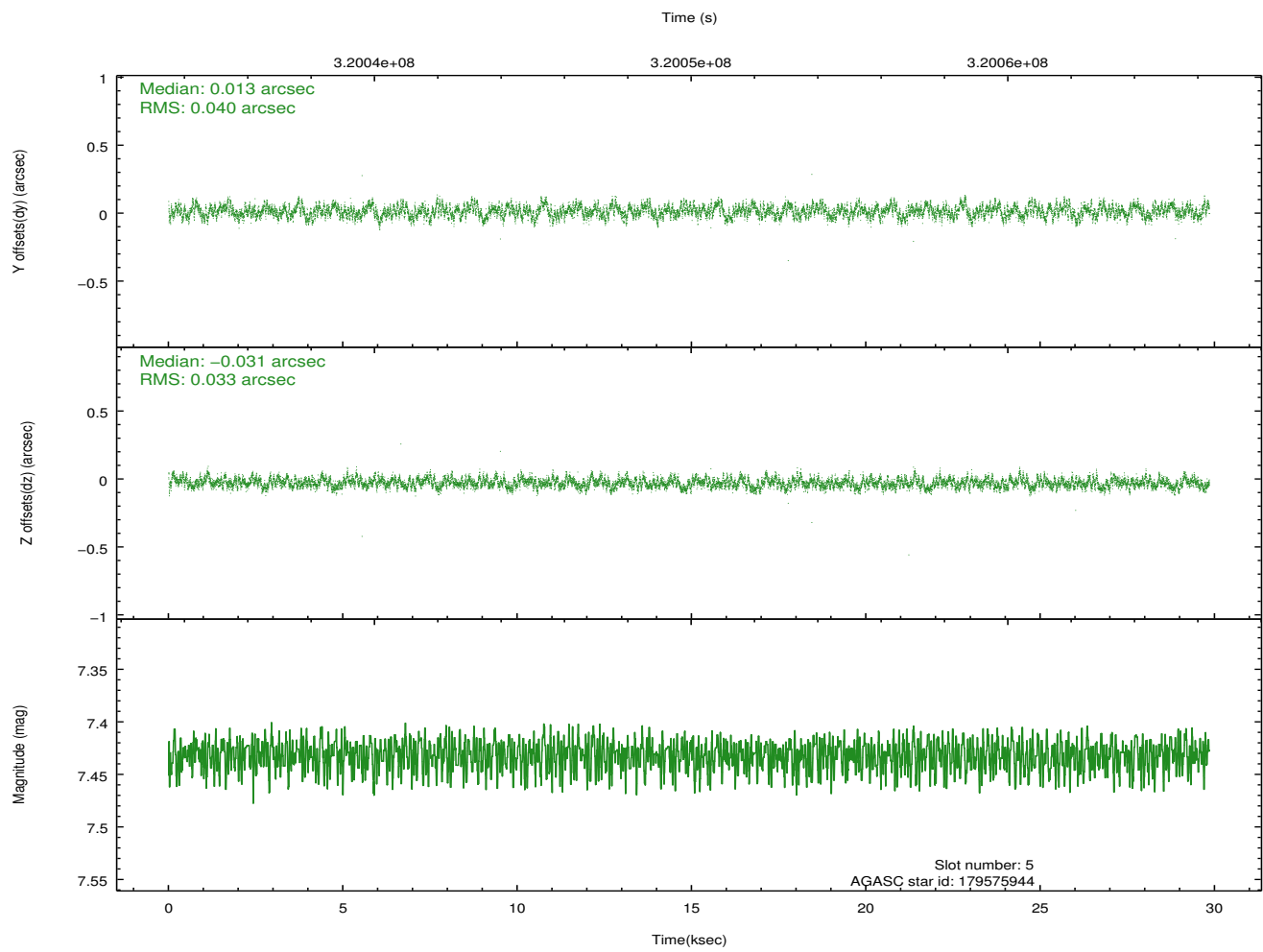
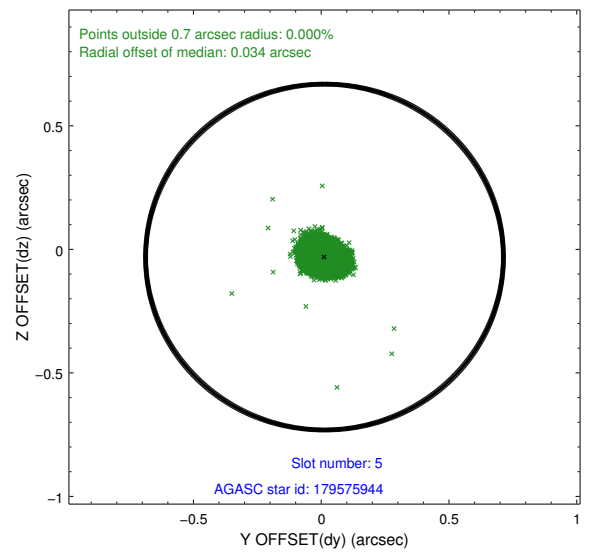
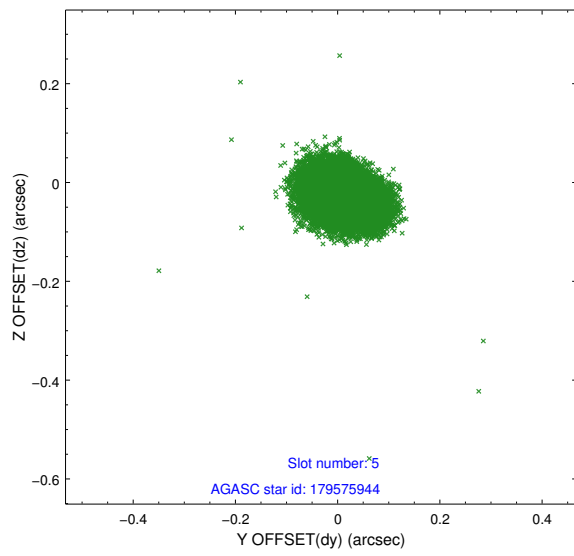
2.4.1 Slot 3



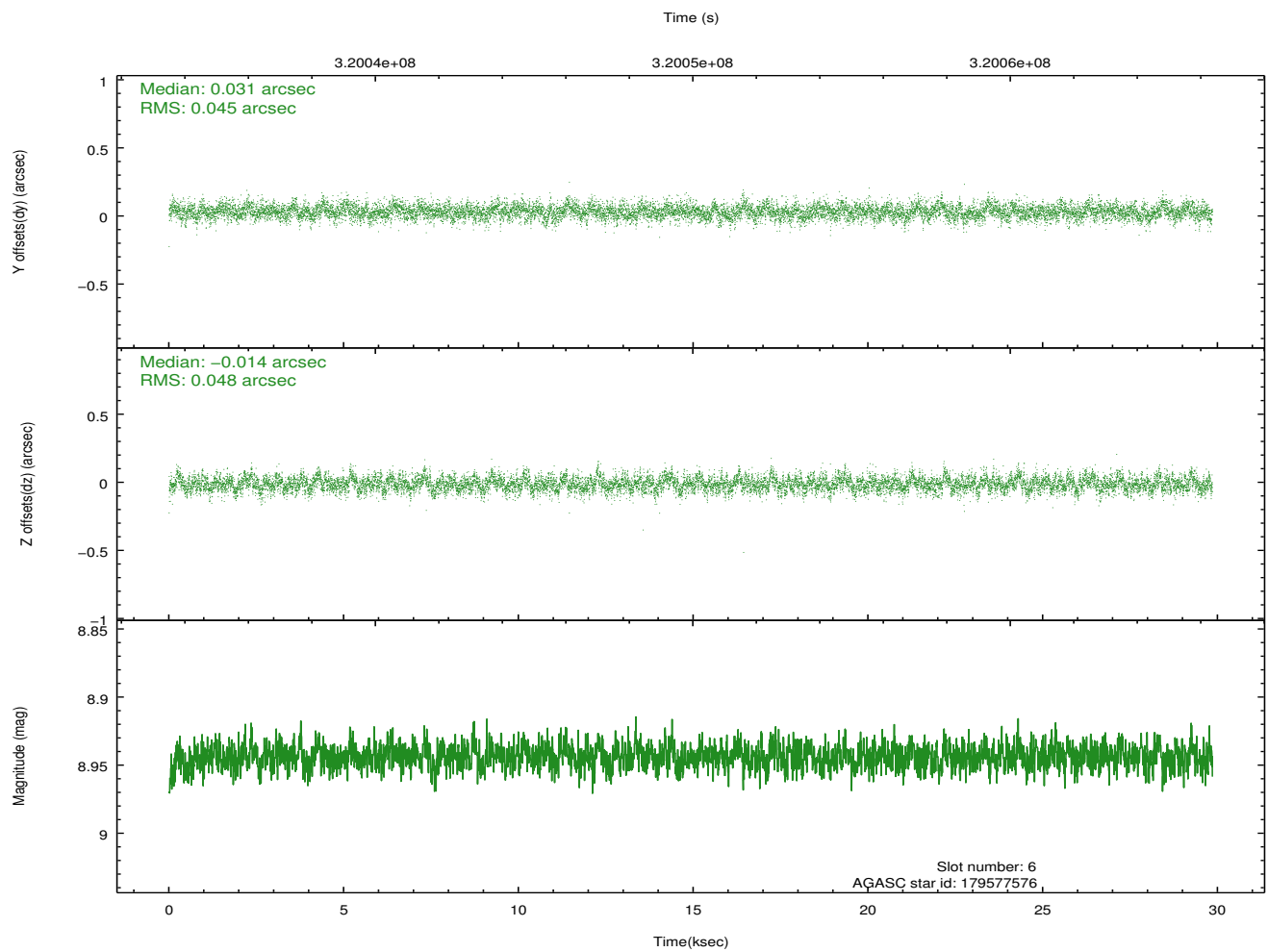
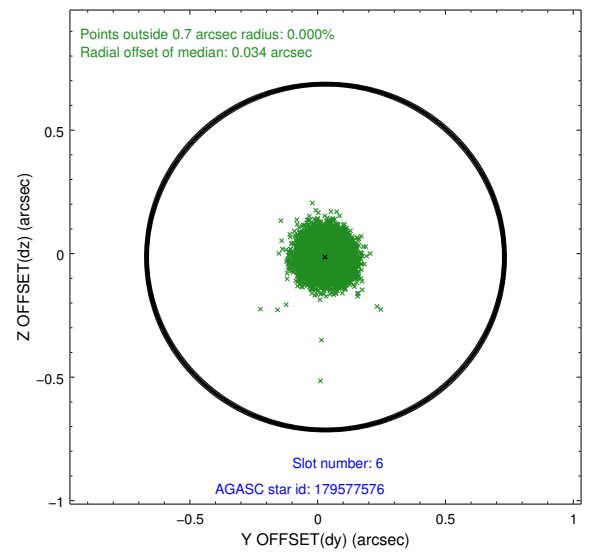
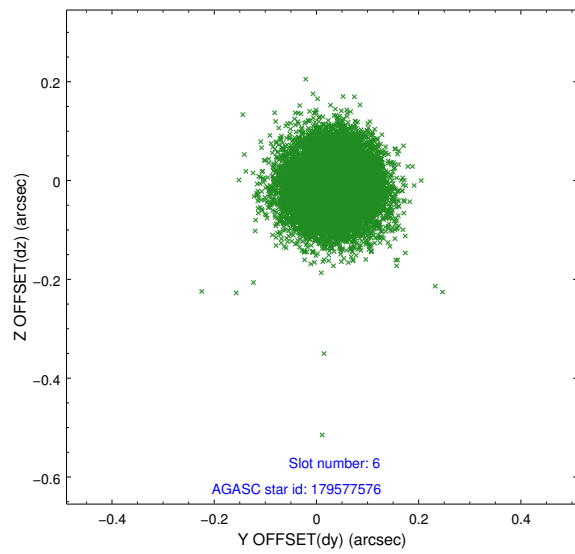
2.4.2 Slot 4



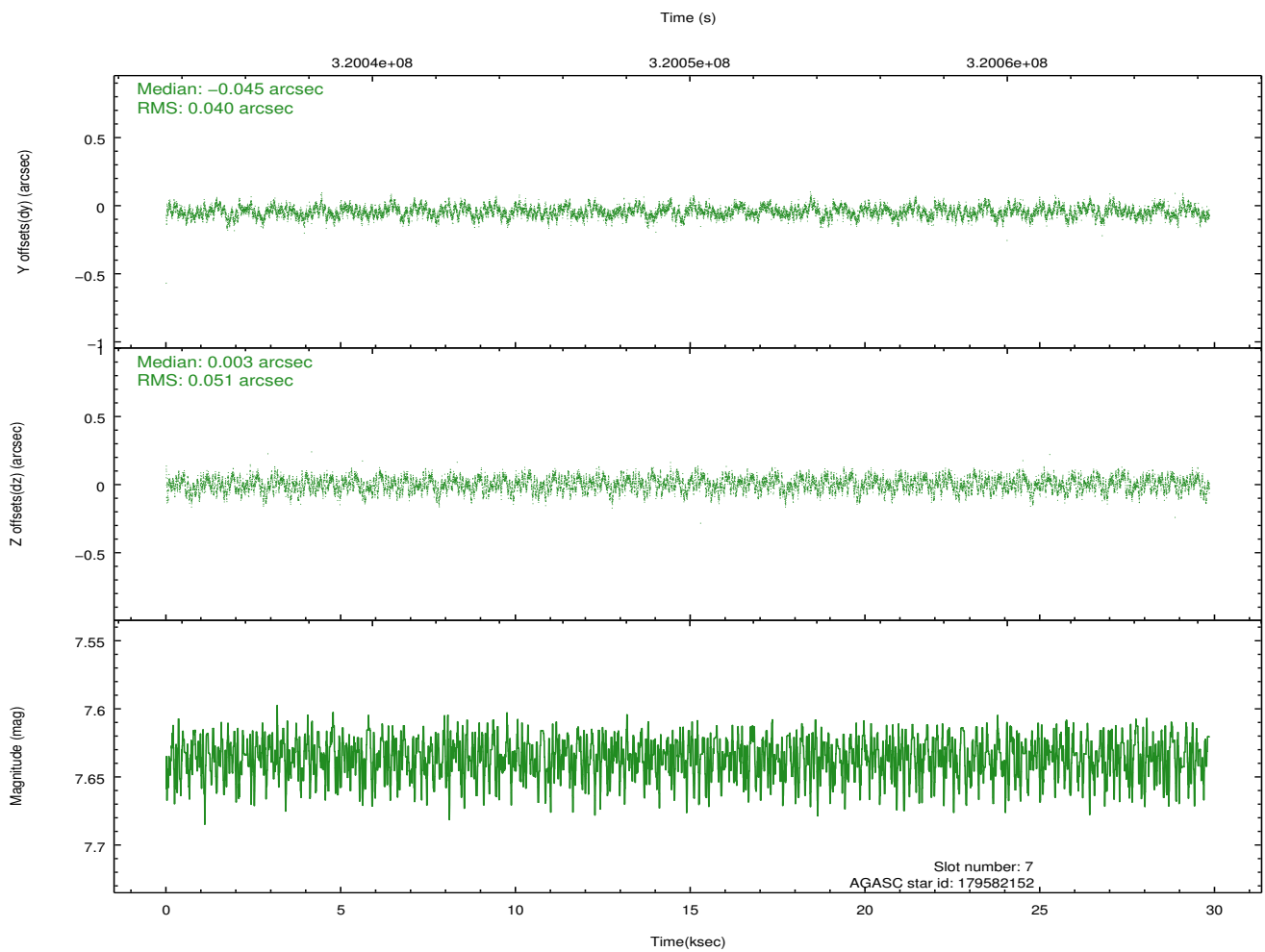
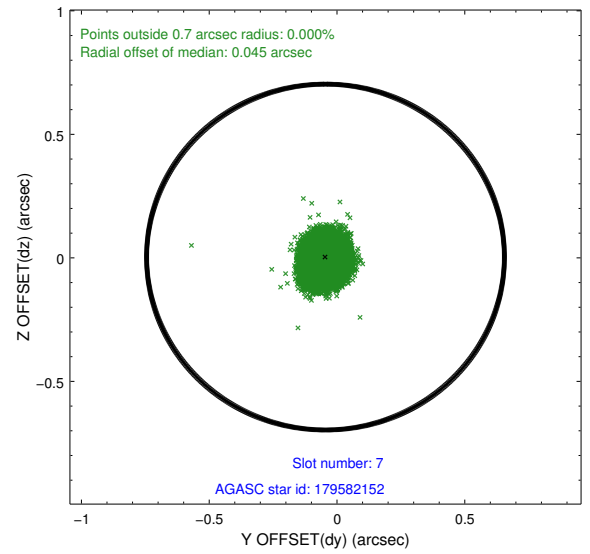
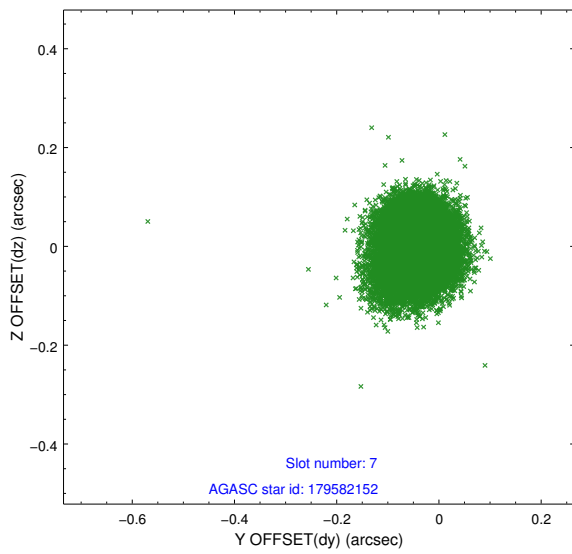
2.4.3 Slot 5



2.4.4 Slot 6

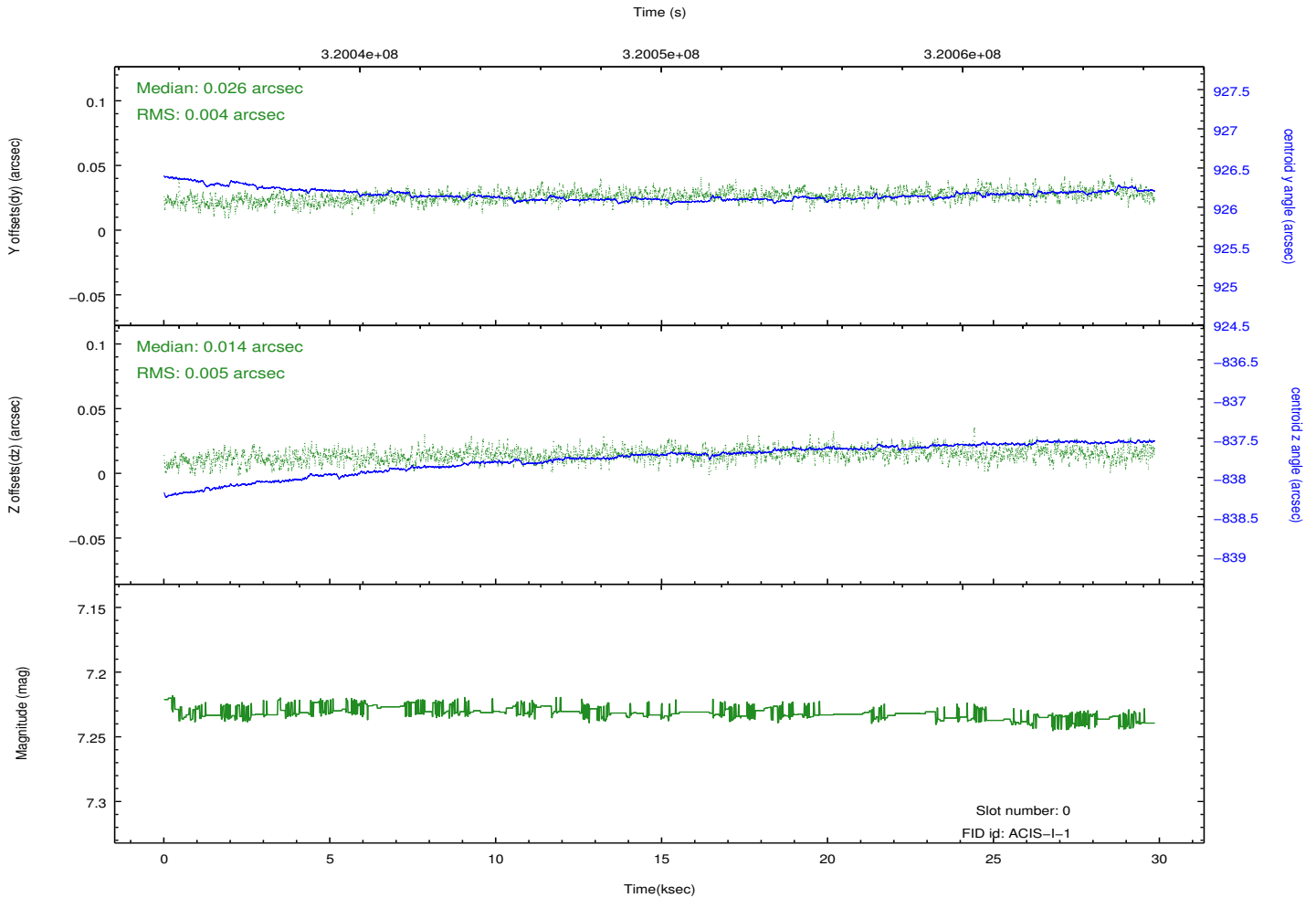
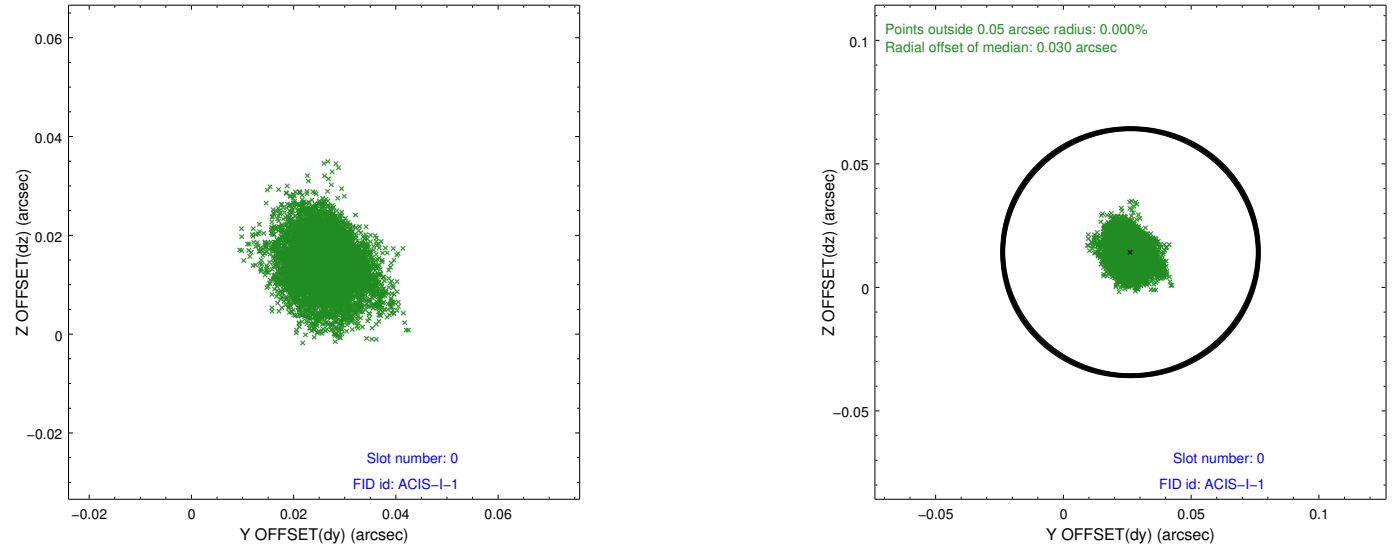


2.4.5 Slot 7

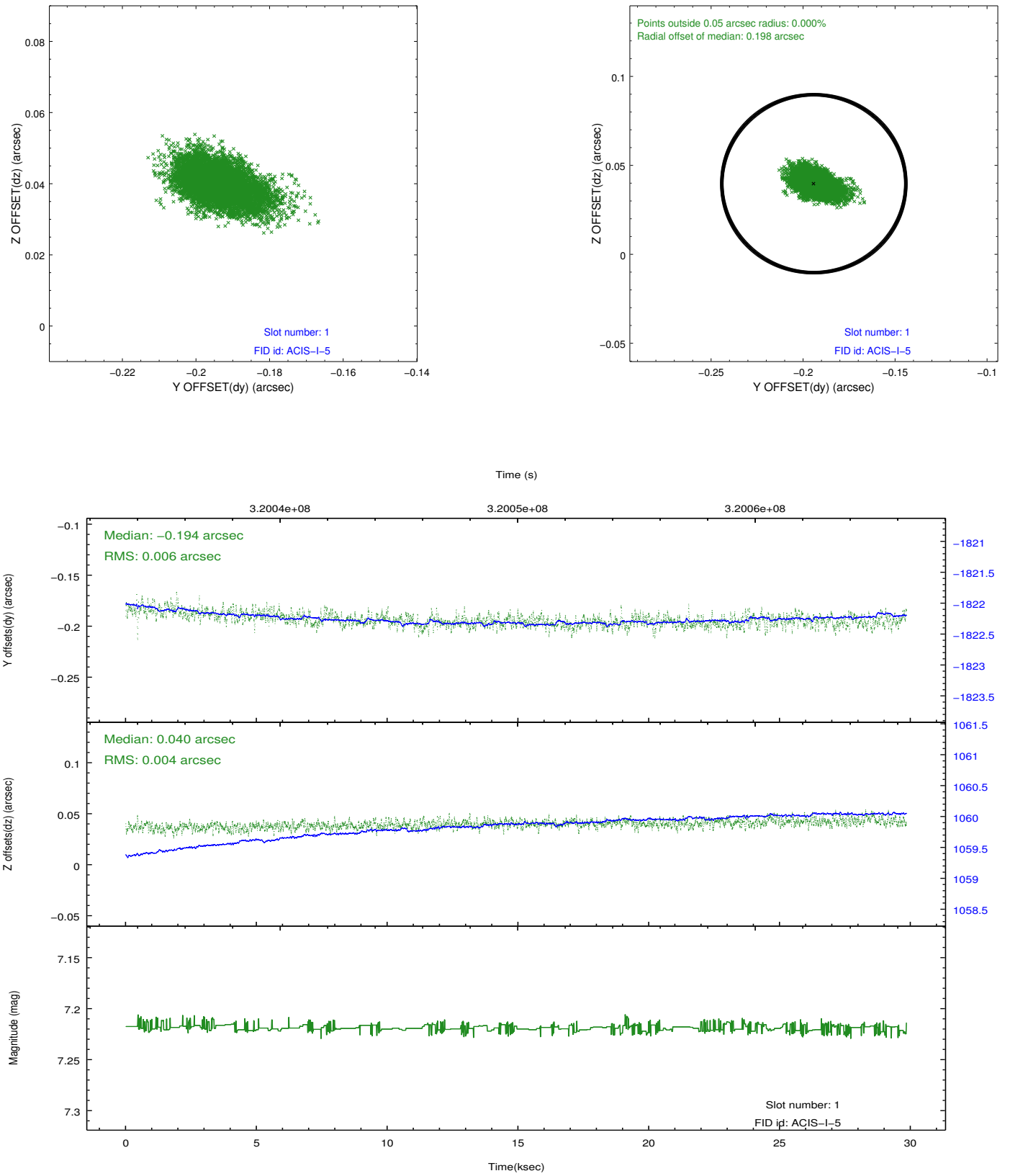


2.5 FID Slots

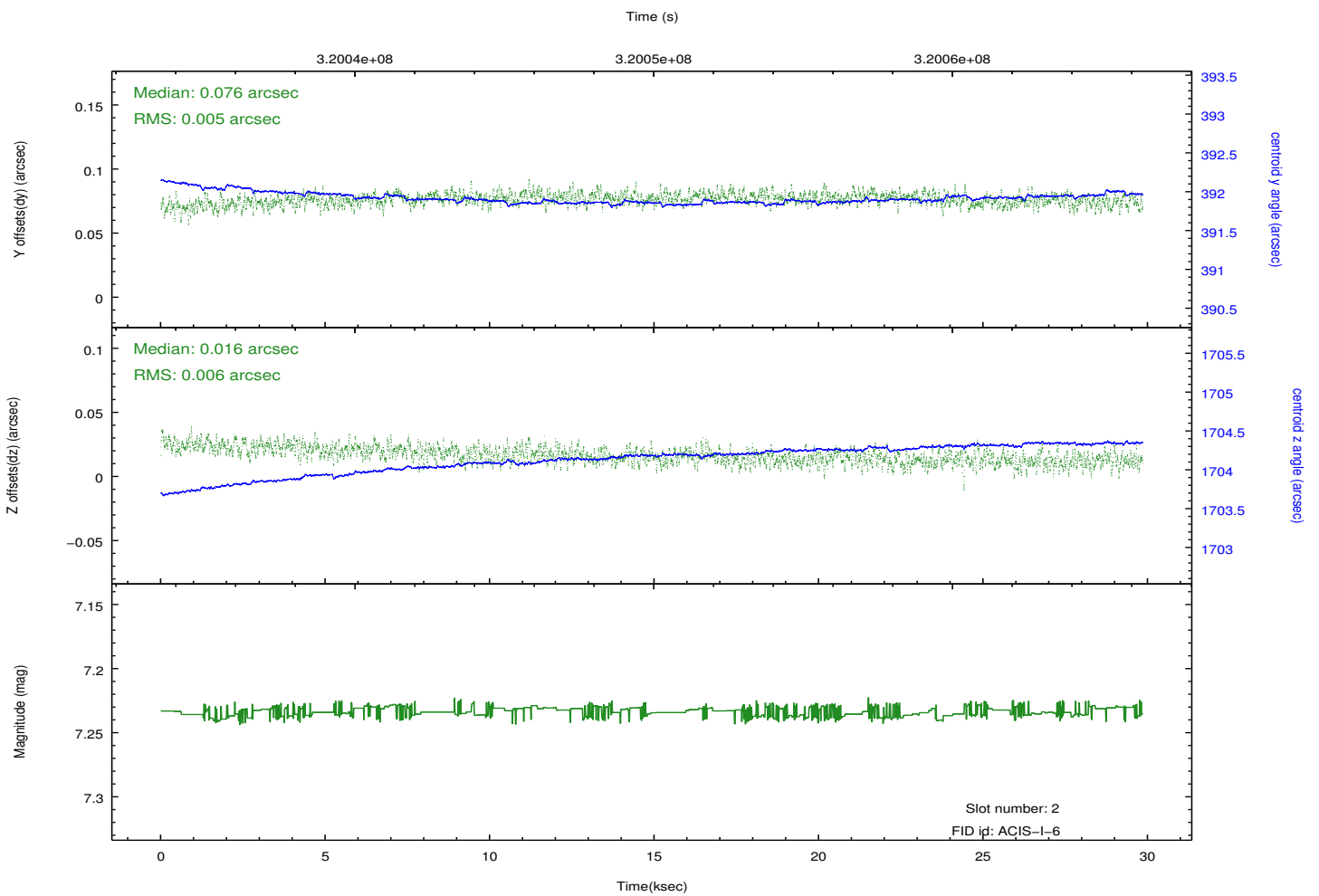
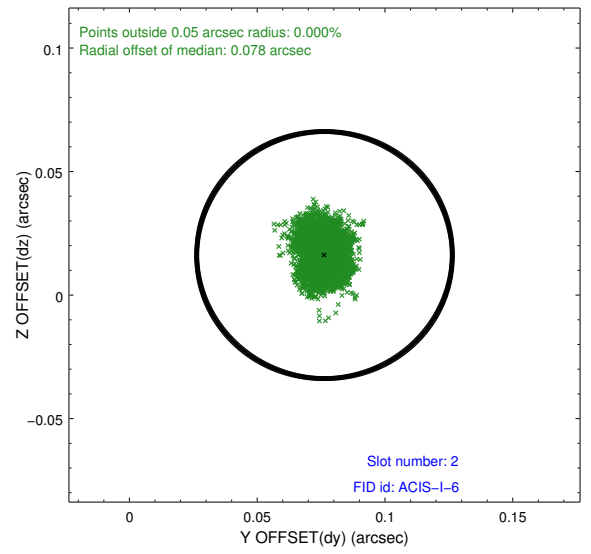
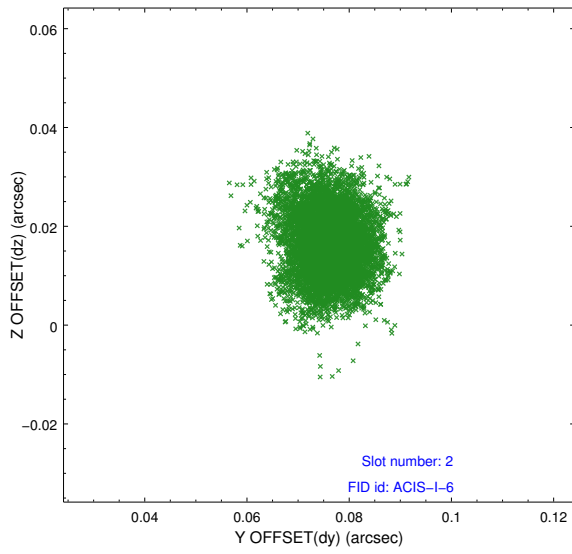
2.5.1 Slot 0



2.5.2 Slot 1



2.5.3 Slot 2



A Summary

A.1 Status

V&V Scientist	Jen Lauer
V&V Date (YYYY-MM-DD)	2012.05.13
V&V Edition	1
V&V Disposition and Status	OK
V&V Charge Time	29.8367589

A.2 Comments

Joint Proposal: NRAO. Window constraint met.